





Timber Sales Program

April 7, 2026

A Presentation to the Board of Natural Resources

By Mike Sly, PSLD Assistant Division Manager



Agenda

- March 2026 Results
- Fiscal Year 2026 Update
- Current Proposed Sales (Action Item)



March 2026 Results

Sales Offered

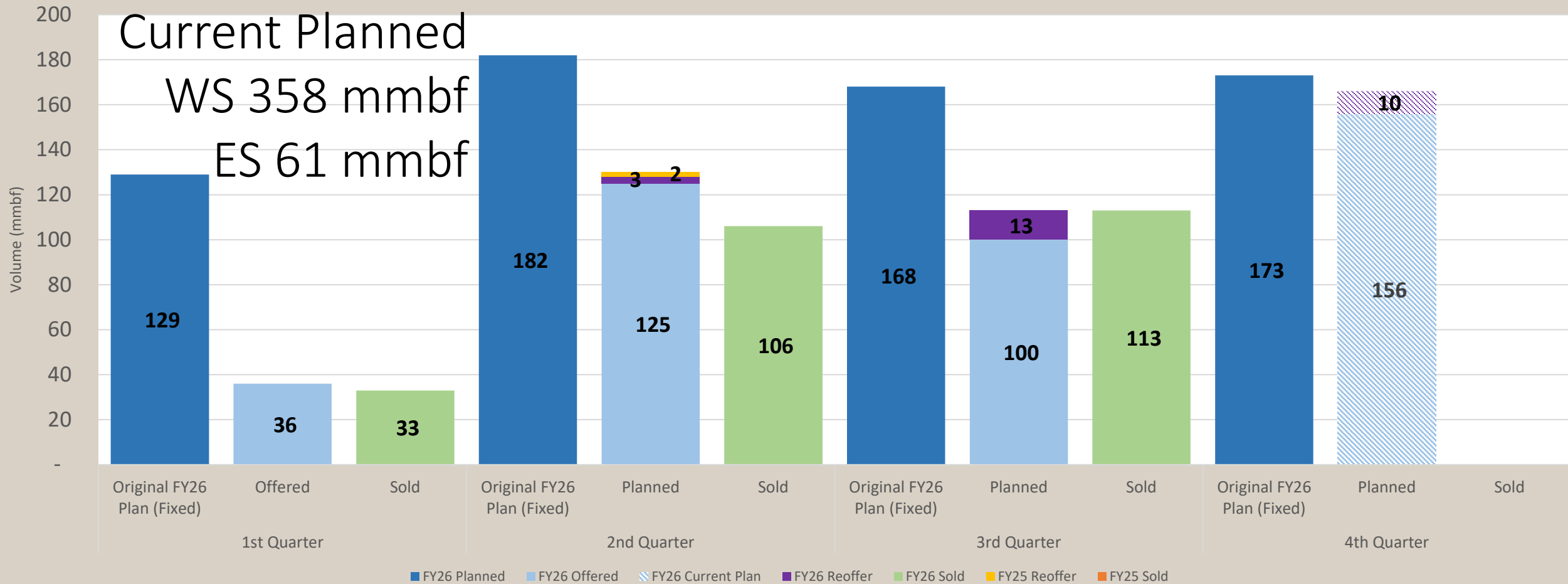
- 11 sales
- 53.3 mmbf
- \$9.0 million
- \$169/mbf

Sales Sold

- 11 sales
- 53.2 mmbf
- \$13.5 million
- \$255/mbf
- Avg Bids: 2.3



Fiscal Year 2026 Update



*Original FY26 Plan volume based on internal tracking pulled 7/1/2025



Current Proposed Sales - Overview

Total Proposal

- 9 sales
- 55.5 mmbf
- \$13.9 million
- \$250/mbf

Proposed Sales

KICK IN THE PANTS - OLY

RUBBLE - OLY

SCHMIDT CREEK SORTS - PC

BABY RATTLE - SE

A QTOMIC - SE

ONLY FERNS - PC

KINGFISHER VRH VDT - PC

ECHO EXPLORER VRH BLOWDOWN SALVAGE - NW

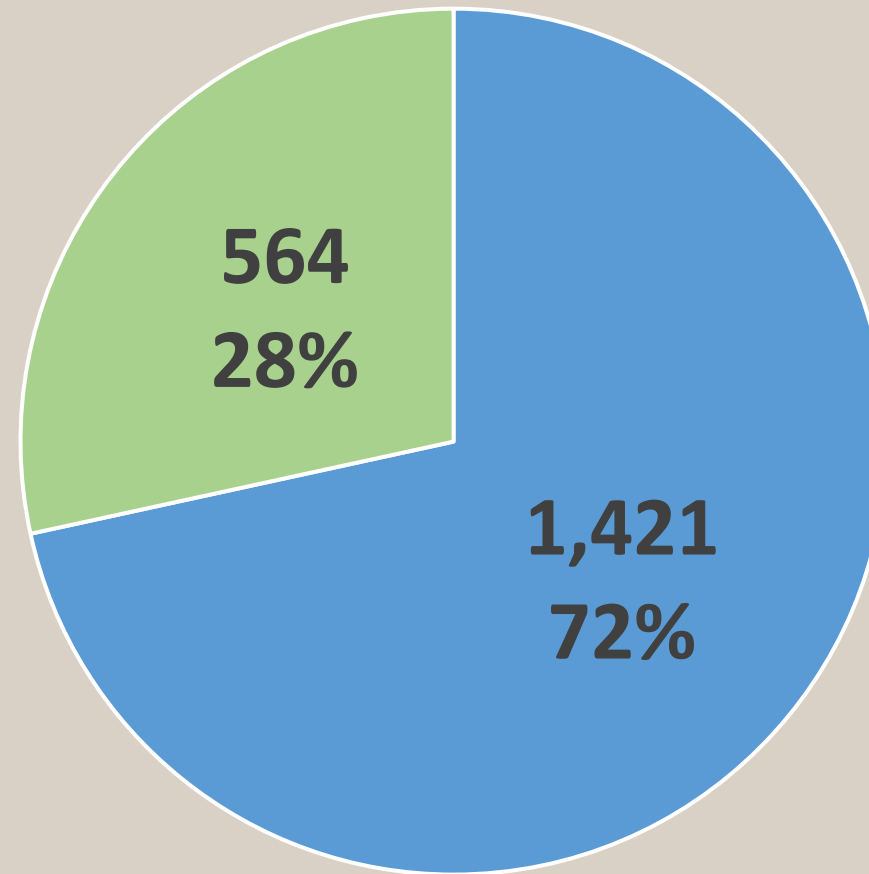
OLD DOUGLAS SORTS - NE



Current Proposed Sales - Conservation

Westside Sale Proposal Acreages

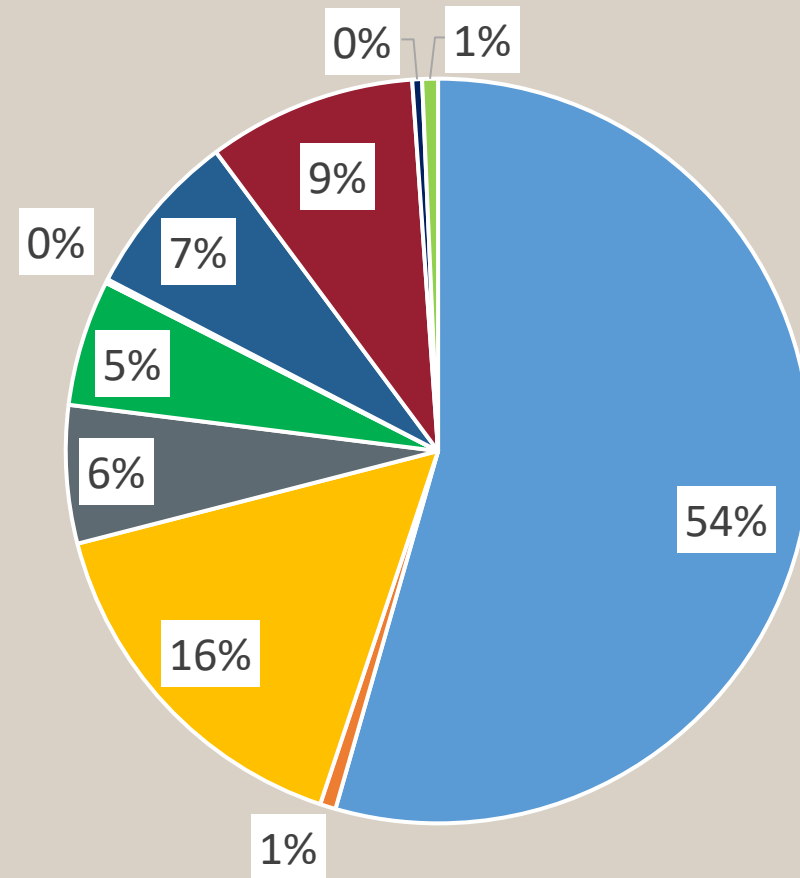
- Net Harvest Acres
- Acres Conserved



Current Proposed Sales – Trust Breakdown

Appraised Revenue % by Trust

- 01=State Forest Board Transfer
- 02=State Forest Board Purchase
- 03=Common School & Indemnity
- 04=Agricultural School
- 06=C.E.P. & R.I.
- 07=Capitol Building
- 08=Normal School
- 10=Scientific School
- 12=Community College Forest Reserve
- 41=University Repayment



Kick in the Pants

30-109752

Conservation Facts

Original planned area: 234 acres

Final harvest area: 156 acres

Conserved area: 70 acres

Percent conserved: 30%

Appraised Stumpage: \$106/MBF



Rubble

30-109762

Conservation Facts

Original planned area: 370 acres

Final harvest area: 279 acres

Conserved area: 83 acres

Percent conserved: 23%

Appraised Stumpage: \$132/MBF



Clallam County

Sale Name	County Distribution
Kick in the Pants	\$ 322,100
Rubble	\$ 757,200
Total to Clallam County	\$ 1,079,300

Taxing District	Distribution
CONSERVATION FUTURES	\$ 14,200
CLALLAM COUNTY GENERAL	\$ 98,700*
CLALLAM COUNTY ROAD GENERAL	\$ 99,500
CAPITAL IMPROVEMENT PORT DISTRICT	\$ 2,300
LIBRARY COUNTY	\$ 10,000
FIRE # 1 GENERAL	\$ 30,200
HOSPITAL DIST #1 EMS	\$ 96,700
HOSPITAL DIST #1 GENERAL	\$ 37,600
QUILLAYUTE VALLEY SD #402 BOND	\$ 171,900
QUILLAYUTE VALLEY SD #402 ENRICHMENT	\$ 206,500
STATE SCHOOL PT 1	\$ 202,500
STATE SCHOOL PT 2	\$ 109,200
Totals:	\$ 1,079,300

* Included in Clallam County General: Development Disability, Veteran's Relief, Land Assessment



Schmidt Creek Sorts

30-108379

Conservation Facts

Original planned area: 143 acres

Final harvest area: 90 acres

Conserved area: 49 acres

Percent conserved: 34%

Appraised Stumpage: \$330/MBF



Baby Rattle

30-108372

Conservation Facts

Original planned area: 139 acres

Final harvest area: 136 acres

Conserved area: 3 acres

Percent conserved: 2%

Appraised Stumpage: \$341/MBF



Q Atomic Timber Sale

30-108383

Conservation Facts

Original planned area: 291 acres

Final harvest area: 291 acres

Appraised Stumpage: \$120/MBF



Only Ferns

30-109870

Conservation Facts

Original planned area: 352 acres

Final harvest area: 249 acres

Conserved area: 101 acres

Percent conserved: 29%

Appraised Stumpage: \$301/MBF



Kingfisher VRH VDT

30-109534

Conservation Facts

Original planned area: 391 acres

Final harvest area: 311 acres

Conserved area: 149 acres

Percent conserved: 48%

Appraised Stumpage: \$387/MBF



Echo Explorer VRH Blowdown Salvage

30-108337

Conservation Facts

Original planned area: 600 acres

Final harvest area: 334 acres

Conserved area: 189 acres

Percent conserved: 36%

Appraised Stumpage: \$218/MBF



Q Old Douglas Sorts

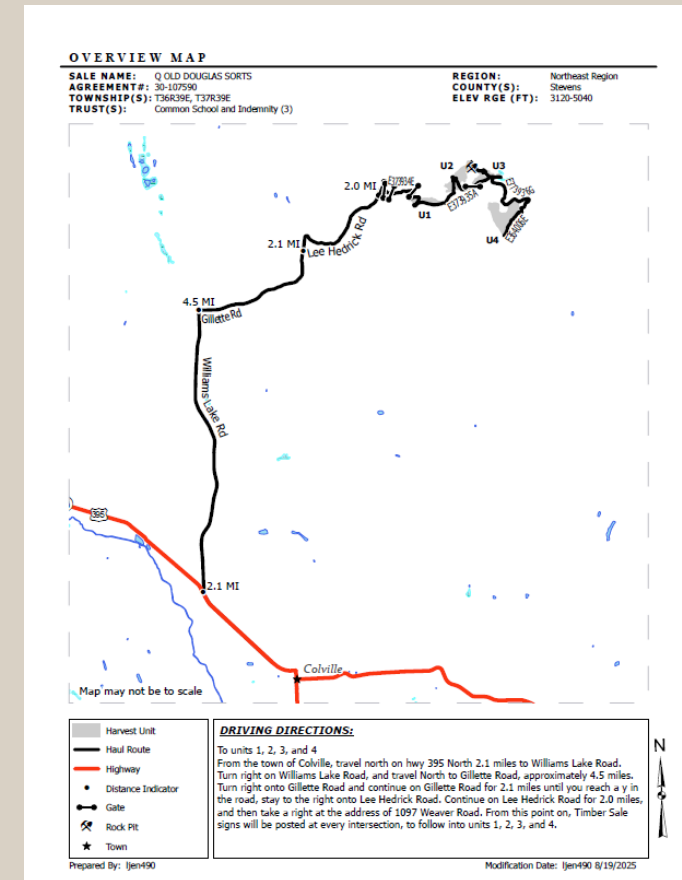
30-110082-30-110089

Conservation Facts

Original planned area: 199 acres

Final harvest area: 195 acres

Appraised Stumpage: \$171/MBF



Questions?

Proposed Sales

KICK IN THE PANTS - OLY

RUBBLE - OLY

SCHMIDT CREEK SORTS - PC

BABY RATTLE - SE

A QTOMIC - SE

ONLY FERNS - PC

KINGFISHER VRH VDT - PC

ECHO EXPLORER VRH BLOWDOWN SALVAGE - NW

OLD DOUGLAS SORTS - NE

Staff recommends all sales be approved for auction as being in the best interest of the beneficiaries and the State



