



Public Auction Sale of Timber

August 2024

Book 1062



IMPORTANT NOTICES

Natural Resources (DNR)

Governmental Regulatory Actions or Orders

The purchaser assumes the risk of liabilities related to regulatory actions or orders by any government agency that may affect the operability of these timber sales. Such regulatory actions or orders include, but are not limited to, actions taken pursuant to the State Forest Practices Act, Chapter 76.09 RCW, and the Federal Endangered Species Act, 16 U.S.C. §§ 1531-1544. Please see timber sale contract clauses G-066 and G-220 for further information.

Threatened and Endangered Species

DNR cannot verify the presence or absence of any threatened or endangered species that may affect the operability of the timber sale. Purchasers must rely on their own assessments.

Export Restricted

All timber purchased under these state DNR contracts shall not be exported outside of the United States until the timber has been processed. Purchasers shall not violate any of the prohibitions in WAC 240-15-015 (relating to the prohibitions on export and substitution), WAC 240-15-025 (relating to reporting requirements), and WAC 240-15-030 (relating to enforcement). If purchasers knowingly violate WAC 240-15-015, purchasers shall be barred from bidding on or purchasing export restricted timber as provided.

Cover photos

Timber Sales in this book are from state trust lands, managed to help build K-12 public schools, state universities, colleges, prisons, mental hospitals, the state Capitol; and to support local services in many counties.

Top right: Landscape view of DNR-managed trust lands in western Washington. Photo courtesy of DNR staff.

Second down right: Timber harvest operations on DNR-managed trust land. Photo courtesy of DNR staff.

Third down right: Log truck loaded with timber harvested from DNR-managed trust land. Photo courtesy of DNR staff.

Bottom right: Marcus Whitman Elementary School in Richland Washington. Photo courtesy of Richland School District.

Bottom middle: Storytime at the Shelton Timberland Library. Photo courtesy of Timberland Regional Library.

Bottom left: Douglas-fir seedlings growing at the Webster Nursery. Many of these seedlings will be planted following timber harvest on DNR-managed trust lands. Photo courtesy of DNR staff.

Table of Contents

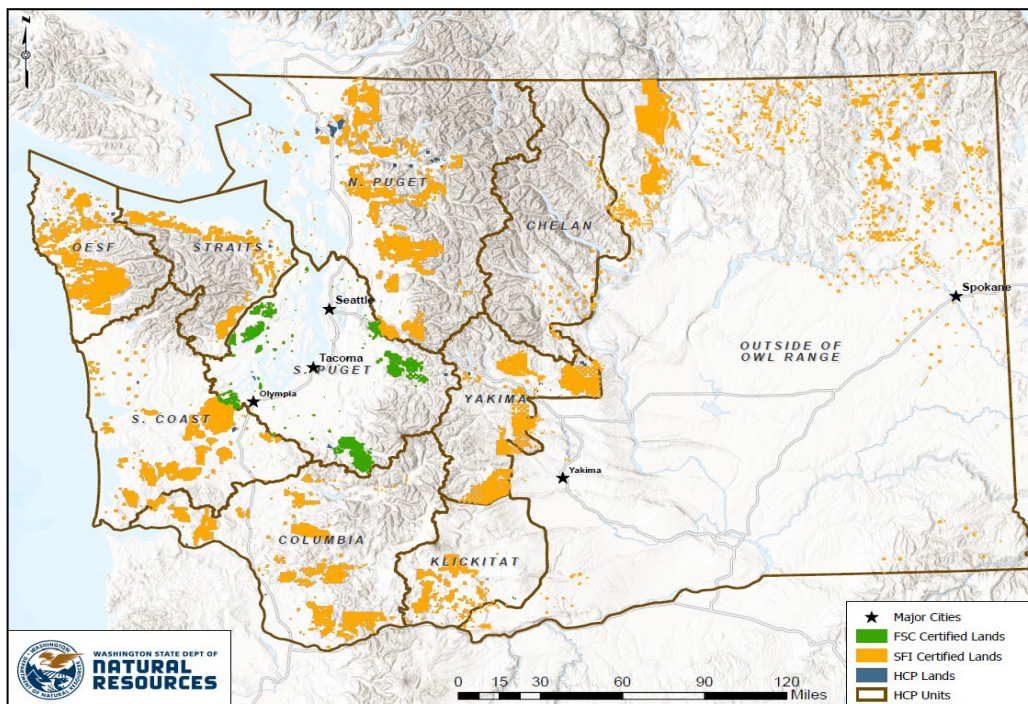
Certification Opportunities for DNR Timber Purchasers	Page 3
Bidder/Purchaser Auction and Bidding Information	Page 5
Summary of All Sales Being Offered in August	Page 9
Doc Holliday	Page 11
Salmonberry Surprise	Page 17
Q Gold Rush	Page 23
Sealed Bid Form and Instructions	Page 29
Statewide Bid Bond and Instructions	Page 31
Timber Sale per Sale Bid Bond and Instructions	Page 35
Log Sort Sealed Bid Form and Instructions	Page 39

Forest Management Certification Opportunities for DNR Timber Purchasers

Forest management certification is a voluntary process that identifies and recognizes forests grown to an approved set of standards and demonstrates environmentally responsible, socially beneficial, and economically viable management practices. To achieve certification and maintain it, certificate holders such as DNR must successfully undergo annual audits conducted by external, accredited certifying bodies. In the U.S., there are two recognized forest certification systems for public land: the [Forest Stewardship Council®](https://www.fsc.org/) (FSC® C012959) and the [Sustainable Forestry Initiative®](https://www.forests.org/) (SFI®-00071).

To learn more about chain-of-custody and/or about becoming a “program participant” in the FSC program, please visit us.fsc.org/en-us.

To learn more about chain-of-custody and/or about becoming a “program participant” in the SFI program, please visit forests.org.



To learn more, visit DNR's [Forest Certification](#) webpage or contact:

Product Sales & Leasing Division

Product Sales Section

Steve Teitzel, Operations, steve.teitzel@dnr.wa.gov

Forest Resources Division

HCP and Scientific Consultation Section

Allen Estep, Asst. Division Mgr., allen.estep@dnr.wa.gov



The mark of
responsible forestry



DNR's FSC certificate # is: BV-FM/COC-080501

DNR's SFI certificate # is: BVC-SFIFM-018227

Washington State Department of Natural Resources (DNR)

Bidder's/Purchaser's Inspection of Sale Area and Forest Products

Acreage estimates and volume estimates contained within each timber notice of sale and each timber sale contract are made only for administrative and identification purposes. Except as expressly provided by the timber sale contract, the purchaser shall be responsible for paying the entire purchase price, even if the actual acreage or timber volume varies from the estimated quantity or volume shown.

All prospective bidders have the opportunity and are expected to inspect the sale area and the forest products located thereon. Bidders shall not rely on any representations by the State including, but not limited to, acreage estimates, volume estimates, appraisal or pre-bid documentation. The successful bidder/purchaser will further warrant that they have entered the timber sale contract without any reliance upon the DNR's volume estimates, acreage estimates, appraisals, pre-bid documentation, or any other representation by the DNR.

Any timber sale contract arising out of these public auctions will require the successful purchaser to warrant that they are entering the timber sale contract based solely upon their own judgment of the value of the forest products, formed after their own examination and inspection of both the timber sale area and the forest products being sold.

Exclusion and Disclaimer of Warranties

The PARTIES AGREE that the IMPLIED WARRANTIES OF MERCHANTABILITY AND FITNESS FOR A PARTICULAR PURPOSE, and ALL OTHER WARRANTIES EXPRESS OR IMPLIED, ARE EXCLUDED from this transaction, and shall not apply to the goods sold. For example, THE FOLLOWING SPECIFIC MATTERS ARE NOT WARRANTED, and are EXCLUDED from this transaction:

- A. ***The merchantability of the forest products.*** The use of the term "merchantable" in any document is not intended to vary the foregoing.
- B. ***The condition of the forest products.*** All forest products will be conveyed "AS IS."
- C. ***The acreage contained within any sale area.*** Any acreage descriptions appearing in the timber notices of sale, timber sale contract, timber sale map or other documents are estimates only, provided solely for administrative and identification purposes.
- D. ***The volume, quality, or grade of the forest products.*** The descriptions of the forest products to be conveyed are estimates only, made solely for administrative and identification purposes.
- E. ***The correctness of any soil or surface conditions, presale construction appraisals, investigations, and all other pre-bid documents prepared by or for the State.*** These documents have been prepared for the State's appraisal purposes only.
- F. ***That the sale area is free from threatened or endangered species, or their habitat.*** The State is not responsible for any interferences with forestry operations that result from the presence of any threatened or endangered species, or the presence of their habitat, within the sale area.
- G. That the forestry operations to be performed under this contract will be free from regulatory actions by governmental agencies. The State is not responsible for actions to enforce regulatory laws, such as the Washington Forest Practices Act (Chapter 76.09 RCW), taken by the Department of Natural Resources or any other agency that may affect the operability of these timber sales.
- H. Items contained in any other documents prepared for or by the State.

Please also see timber sale contract clause G-060 for further information.

BIDDING PROCEDURES FOR TIMBER AUCTIONS

The general requirements that follow are a part of all Timber Notices of Sale to be auctioned by the Department of Natural Resources (DNR).

General Information

The State reserves the right to waive minor irregularities and the right to reject any or all bids.

- A. This book contains the timber notices of sale and maps for each timber sale scheduled to be auctioned. More specific information can be obtained by contacting the appropriate region office at the number listed on the back cover of this book. Sales may be added to each monthly auction by the Department which are not included in this publication. This publication is not updated following original production.
- B. The timber notice of sale is a summary of sale information. For more specific information, interested parties are encouraged to view the Auction Packets on www.dnr.wa.gov. Auction Packets contain **DRAFT** copies of the timber notice of sale, map, contract, road plan, cruise data, precruise and cruise narrative, and other associated documents.
- C. Timber sale auction packets may also be obtained at no charge for individual sales by visiting the appropriate region office.
- D. Timber sale contracts contain extensive terms and conditions that will be binding upon successful high bidders. Each bidder should carefully review all terms contained in the appropriate **DRAFT** timber sale contract prior to bidding on a sale, and should review the final contract prior to signing. **DRAFT** timber sale contracts are contained in the auction packets and are available upon request at the respective region office.
- E. Sales advertised in this book are subject to the Board of Natural Resources approval before they will be sold. The Board meets and approves sales approximately six weeks prior to auction.
- F. The State does not guarantee the accuracy of any information contained herein pertaining to particular sales. Therefore, all prospective purchasers are expected to make their own independent inspections and appraisals prior to bidding.
- G. If any conflict exists between the information in the Timber Notice of Sale, timber sale map, sale auction packets and that in the timber sale contract, the signed contract will prevail.
- H. Purchasers must pay the Forest Excise Tax on the bid price, permanent road construction costs, and other considerations. The tax rate is 5% without the EARR credit and 4.2% with the credit. For more information contact the Department of Revenue, Forest Tax Section at 1-800-548-8829.
- I. **All sales are subject to confirmation by the DNR under RCW 79.15.120.**
- J. **Within 30 days of sale confirmation, the apparent high bidder will provide to the State the Performance Security specified on each Notice of Sale. The successful bidder also agrees to return a signed contract to the State within 30 days of confirmation.** Failure to provide a signed contract to the state within 30 days of confirmation may result in a loss of bidder's rights to the products sold and forfeiture of initial deposit moneys.
- K. Each DNR region office has information about sales offered in that region. For further information, contact the respective DNR region office. Region office addresses and telephone numbers appear on the back cover of this booklet.
- L. The purchaser assumes the responsibility for any costs associated with extra maintenance or repair levied by a county for any county road used by the purchaser.

Auction Time and Location

Auctions will start at 10:00 a.m. and close at 4:00 p.m. on the date and at the location specified in each Timber Notice of Sale.

Bidding Process

- A. All timber will be auctioned using the sealed bid method.
- B. Bids submitted on the day of auction must be in the bid box at the specified auction location before 10:00 a.m. The respective DNR region office must receive mailed bids by 4:30 p.m., on the last business day before the auction. Bidders assume all risk for the method of delivery.
- C. The DNR has the right to reject bid forms that are completed incorrectly. *All bid forms must have an original signature on behalf of the person or entity submitting the bid, and must be on the form provided in this booklet or a photocopy thereof. Revised documents are not permissible.* Bidding instructions are on the back of the Sealed Bid Form. A bid deposit must be included in the sealed bid envelope unless using a Timber Sale Statewide Bid Bond.
- D. All bids must include the completed Sealed Bid Form and bid deposit.
- E. Bids will be opened in each respective region in the order in which sales appear in the Public Auction Sale of Timber book (alphabetically by county and by agreement number). Sales added after the book is printed will be inserted to retain this order. Sort sales may be auctioned out of this sequence at the State's convenience.
- F. If a tie bid occurs, the names of the tie bidders will be placed in a hat and the successful bidder will be determined by a drawing.
- G. Opportunities to Withdraw Bids:
For all sales offered on a stumpage basis only, the apparent high bidder on a particular sale will have the option of withdrawing additional sealed bids submitted for any remaining sales to be auctioned. The apparent high bidder must exercise this option within two minutes after the apparent high bidder is announced. This option is not available for sales offered on a delivered basis.

Eligibility to Bid

The following criteria must be met in order to bid on State timber sales:

- 18 years of age (or have a co-signer who meets the eligibility requirements)
- Licensed to do business in the State of Washington
- Eligible to bid on Export Restricted timber
- Authorized to submit bids

Authorized Representatives

Company officers or company authorized representatives may bid on State sales, sign State documents, or sign checks. A list of authorized representatives and their specific authorities must be submitted, in writing, to the Department of Natural Resources, Product Sales and Leasing Division, P.O. Box 47014, Olympia, Washington, 98504-7014, ten days in advance of the auction. *A company owner or officer must sign this submittal.*

Bid Deposits

- A. Required bid deposits are listed on each Timber Notice of Sale.
- B. Bid deposits must be in the form of cash, certified check, cashiers' check, money order or bid bond.
- C. Bid bonds may be either a Timber Sale Per Sale Bid Bond or a Timber Sale Statewide Bid Bond.
- D. All bid deposits shall be submitted by the person or entity submitting the bid and made payable to the Department of Natural Resources. **Third party deposits will not be accepted.**

Timber Sale Per Sale Bid Bonds

- A. The Per Sale Bid Bond shall guarantee payment of the bid deposit **within ten days of auction.**
- B. The balance between the bid bond and the Initial Deposit payment is due **by 4:30 p.m., on the day of auction.**
- C. Additional forms and instructions for a Per Sale Bid Bond are available at any DNR region office.

Timber Sale Statewide Bid Bond

- A. Statewide Bid Bonds shall guarantee payment of the Initial Deposit on any statewide timber sale while the bond is in effect.
- B. The Statewide Bid Bond must be received by the Department of Natural Resources, Product Sales and Leasing Division, P.O. Box 47014, Olympia, Washington, 98504-7014, ten days in advance of the auction date. The bond shall be in the amount of \$150,000.00.
- C. Successful bidders using a Statewide Bid Bond must pay the total Initial Deposit payment (10% of the total bid price) **by 4:30 p.m., on the day of the auction.**
- D. A Statewide Bid Bond cannot be used to secure the Initial Deposit payment due the day of auction.
- E. Additional forms and instructions for a statewide bid bond are available at any DNR region office.

Payments

The initial deposit for a sale is 10% of the total bid value as submitted by the apparent high bidder (25% if the bidder is a defaulter as defined under WAC 332-140-300) and never less than \$5,000.00 for lump sum sales. For Lump Sum sales appraised at less than \$5,000.00, the entire bid value is due on day of auction.

- A. Apparent high bidders using cash, certified check, cashiers' check or money order as a bid deposit must pay the total Initial Deposit amount by 4:30 p.m. on auction day.
- B. Apparent high bidders using a Timber Sale Per Sale Bid Bond as a bid deposit must pay the difference between the bid deposit and the total initial deposit by 4:30 p.m., on the day of auction. The bid bond amount must be replaced with a certified check, cashiers' check, bank draft, cash, money order, or wire transfer within ten days of the auction.
- C. Apparent high bidders using a Timber Sale Statewide Bid Bond must pay the entire Initial Deposit amount by 4:30 p.m. on the day of auction.
- D. All payments must be in the form of a certified check, cashiers' check, bank draft, cash, money order or wire transfer.



Summary Report of All Sales for the Month of August 2024

Board Sales

<u>County</u>	<u>Region</u>	<u>Agree #</u>	<u>FSC® Sale Name</u>	<u>Volume</u>	<u>Value</u>
Clallam	Olympic	103767	DOC HOLLIDAY	2,309	\$594,000.00
Clallam	Olympic	106462	SALMONBERRY SURPRISE	4,432	\$826,000.00
Spokane	Northeast	106238	Q GOLD RUSH	3,393	\$780,000.00
			Total	===== 10,134	===== \$2,200,000.00



*Scan with your smartphone or tablet to go
to the August 2024 timber auction page*



TIMBER NOTICE OF SALE

SALE NAME: DOC HOLLIDAY

AGREEMENT NO: 30-103767

AUCTION: August 28, 2024 starting at 10:00 a.m., Olympic Region Office, Forks, WA

COUNTY: Clallam

SALE LOCATION: Sale located approximately 22 miles west of Port Angeles, WA

PRODUCTS SOLD AND SALE AREA:

All timber, except trees marked with a band of blue paint, bounded out by leave tree area tags, any downed red cedar, or timber that has been on the ground for five years or more (five years is defined by more than 1.5 inches of sap rot); bounded by timber sale boundary tags, the PA-S-1100 road in Unit 1; timber sale boundary tags, timber type change, the PA-S-1100 and PA-S-1150 roads in Unit 2; timber sale boundary tags, timber type change in Unit 3; timber boundary tags in Unit 4, Unit 5 and Unit 6. All timber bounded by right of way boundary tags.

All forest products above located on part(s) of Sections 6 all in Township 30 North, Range 9 West, Sections 25 all in Township 31 North, Range 10 West, Sections 30 and 31 all in Township 31 North, Range 9 West, W.M., containing 75 acres, more or less.

CERTIFICATION: This sale is certified under the Sustainable Forestry Initiative® program Standard (cert no: BVC-SFIFM-018227)

ESTIMATED SALE VOLUMES AND QUALITY:

Table with columns: Species, Avg DBH, Ring Count, Total MBF, and MBF by Grade (1P, 2P, 3P, SM, 1S, 2S, 3S, 4S, UT). Rows include Douglas fir, Red alder, Hemlock, Redcedar, Spruce, Maple, and Sale Total.

MINIMUM BID: \$594,000.00

BID METHOD: Sealed Bids

PERFORMANCE SECURITY: \$100,000.00

SALE TYPE: Lump Sum

EXPIRATION DATE: October 31, 2026

ALLOCATION: Export Restricted

BID DEPOSIT: \$59,400.00 or Bid Bond. Said deposit shall constitute an opening bid at the appraised price.

HARVEST METHOD: Ground based 100%

Forest products sold under this contract shall be harvested and removed using ground based equipment. Nontethered self-leveling tracked equipment is limited to sustained slopes of 65 percent and less. Other ground based equipment is limited to tracked equipment on sustained slopes that are 45 percent and less. Rubber tired skidders are restricted unless approved by the Contract Administrator. Authority to use other



TIMBER NOTICE OF SALE

equipment or to operate outside the equipment specifications detailed above must be approved in writing by the State.

30' equipment limitation zone on all typed waters.

ROADS: 16.70 stations of required construction. 22.35 stations of required reconstruction. 33.35 stations of optional construction. 5.65 stations of optional reconstruction. 221.00 stations of required prehaul maintenance. 240.25 stations of optional prehaul maintenance. All road activities including timber haul and rock pit development will not be permitted from November 1 to April 30, on weekends, and holidays, unless authorized in writing by the Contract Administrator. Road work on the PA-I-2600, PA-I-2610 and Place Pit any timber felling, road work or operation of heavy equipment performed during the marbled murrelet nesting season (April 1 through September 23) is restricted to two hours after sunrise and two hours before sunset. This does not apply to hauling of timber, rock, or equipment.

ACREAGE DETERMINATION

CRUISE METHOD: Sale area was 100% GPS. Sale units were cruised using a variable plot sample.

FEES: \$39,253.00 is due on day of sale. \$9.00 per MBF is due upon removal. These are in addition to the bid price.

SPECIAL REMARKS: Two weeks notice shall be given prior to any work on the sale to notify recreation staff for redirection or closure of the Sadie Creek ORV and 4x4 trails located near Units 1, 2, 3, 4, 6 and 7. See S-150 clause for further details regarding the trail.

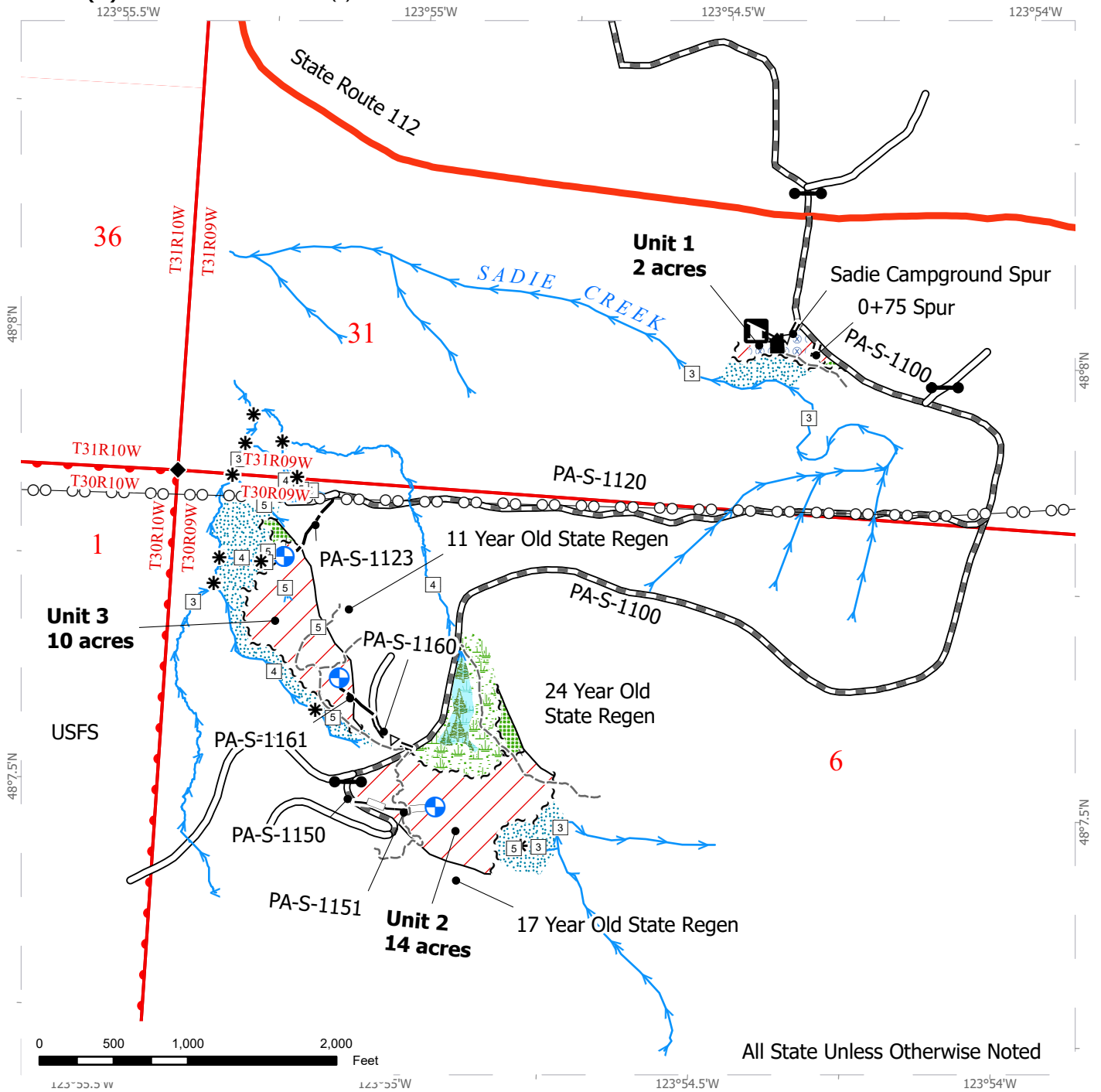
All trees 60 inches in Diameter at Breast Height (DBH) and greater shall not be felled unless for safety reasons, which must be approved by the Contract Administrator. If trees 60 inches DBH or greater need to be felled for safety reasons, trees will be left where felled.

There are locked gates on the PA-S-1000, PA-S-2600 and PA-I-2600. Contact Olympic Region Dispatch Center at 360-374-2800 to obtain a 786 key. This sale has dust and hazard abatement requirements.

TIMBER SALE MAP

SALE NAME: DOC HOLLIDAY
AGREEMENT #: 30-103767
TOWNSHIP(S): T30R9W, T31R10W, T31R9W
TRUST(S): State Forest Transfer (1)

REGION: Olympic Region
COUNTY(S): Clallam
ELEVATION RGE: 320-880



All State Unless Otherwise Noted

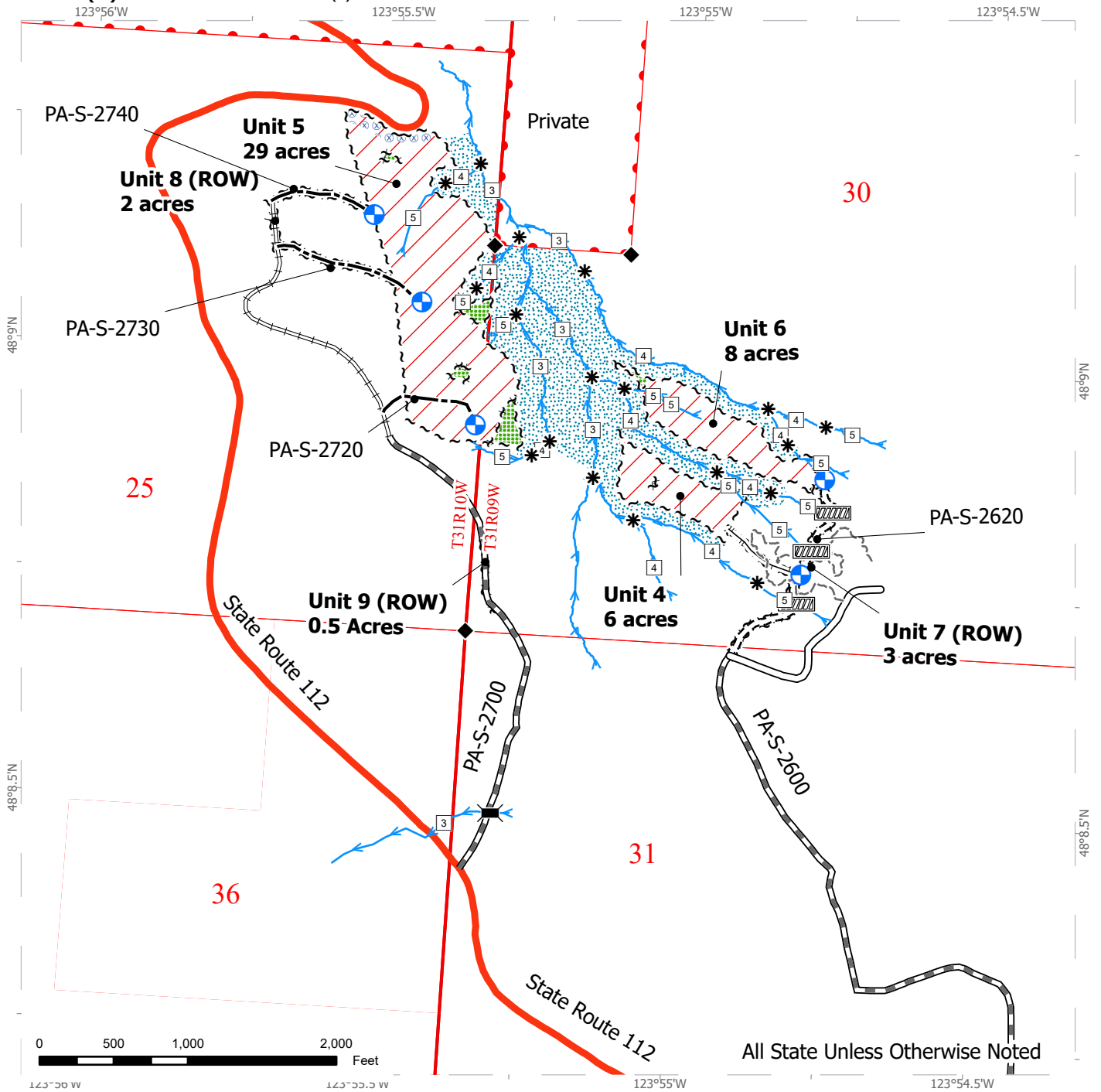
Variable Retention Harvest	Sale Boundary Tags	Power Lines
Leave Tree Area	Leave Tree Tags	Highway
Forested Wetland	Timber Type Change	Optional Construction
Wetland Mgt Zone	Gate	Optional Pre-Haul Maintenance
Riparian Mgt Zone	Landing - Proposed	Required Construction
Hazard Abatement Area	Recreation Site	Required Pre-Haul Maintenance
Streams	Structure	Existing Roads
Stream Type	Trail	Optional Reconstruction
Stream Break		Survey Monument



TIMBER SALE MAP

SALE NAME: DOC HOLLIDAY
AGREEMENT #: 30-103767
TOWNSHIP(S): T30R9W, T31R10W, T31R9W
TRUST(S): State Forest Transfer (1)

REGION: Olympic Region
COUNTY(S): Clallam
ELEVATION RGE: 320-880



All State Unless Otherwise Noted

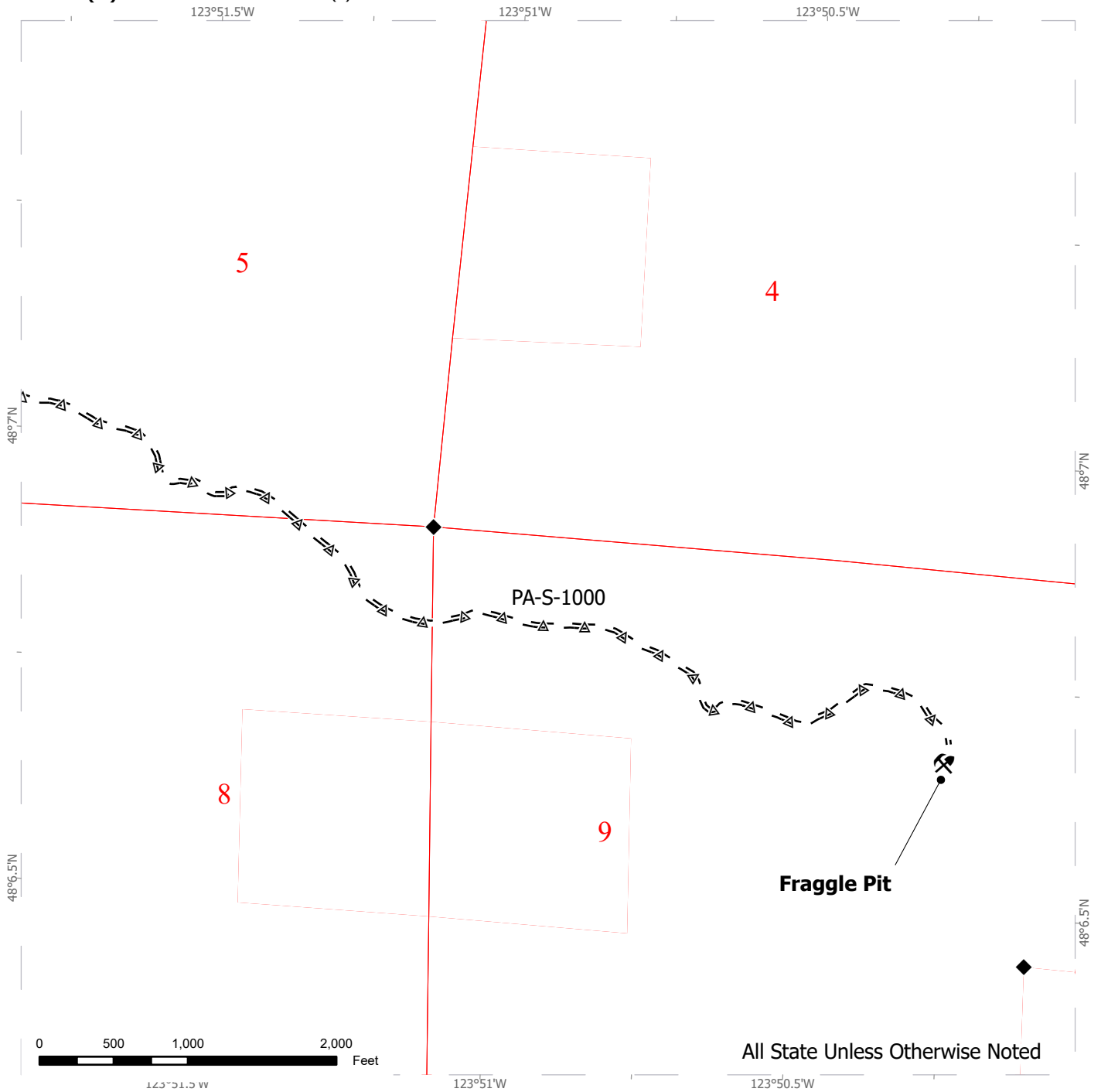
Variable Retention Harvest	Sale Boundary Tags	Highway
Leave Tree Area	Leave Tree Tags	Optional Construction
Riparian Mgt Zone	Right of Way Tags	Required Construction
Hazard Abatement Area	Bridge	Required Pre-Haul Maintenance
Streams	Culvert	Required Reconstruction
Stream Type	Landing - Proposed	Existing Roads
Stream Break	Trail	Designated Skid Trail
		Survey Monument



TIMBER SALE MAP

SALE NAME: DOC HOLLIDAY
AGREEMENT#: 30-103767
TOWNSHIP(S): T30R9W, T31R10W, T31R9W
TRUST(S): State Forest Transfer (1)

REGION: Olympic Region
COUNTY(S): Clallam
ELEVATION RGE: 320-880



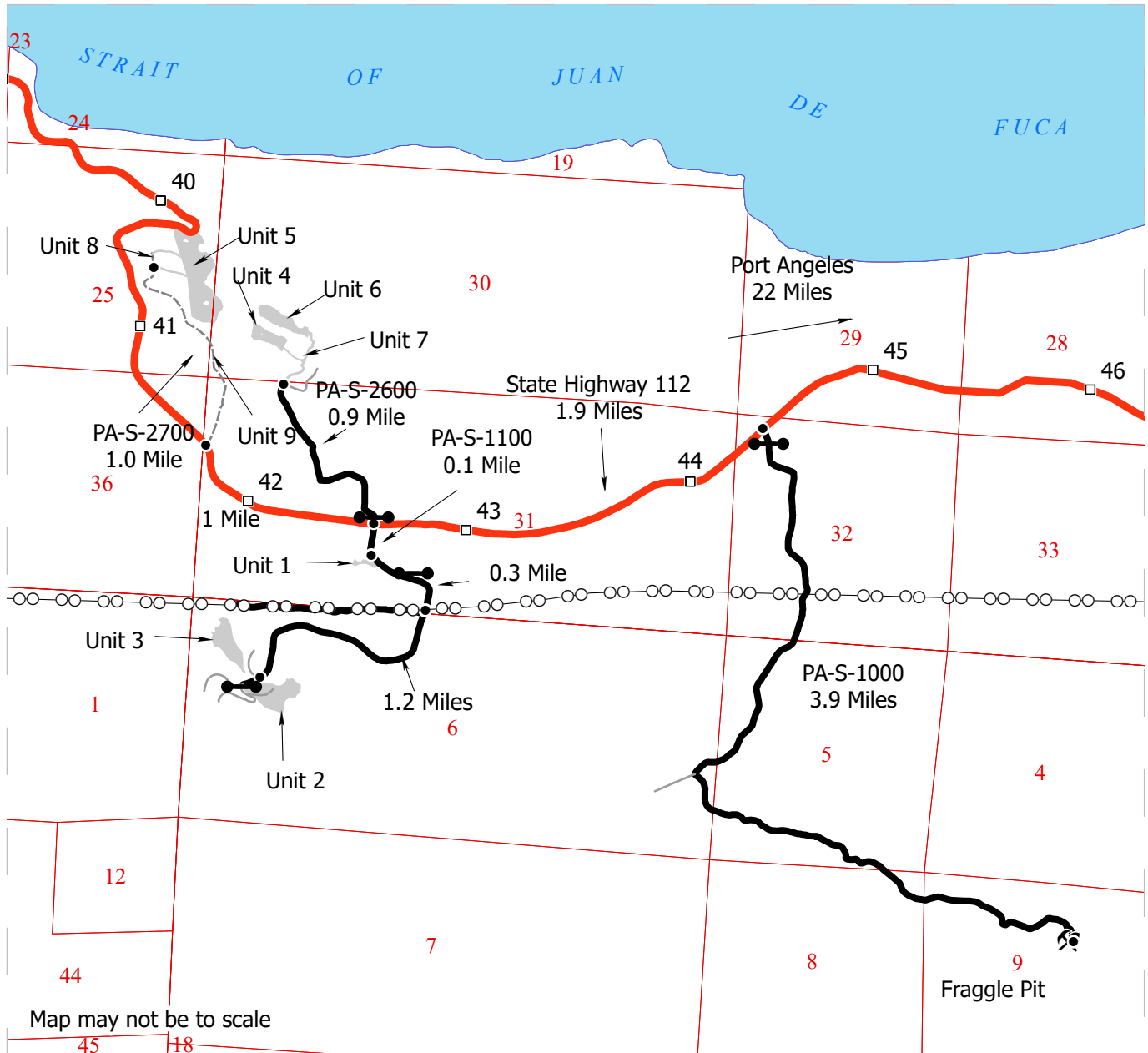
Public Land Survey Sections	Rock Pit	Optional Pre-Haul Maintenance
		Survey Monument



DRIVING MAP

SALE NAME: DOC HOLLIDAY
AGREEMENT #: 30-103767
TOWNSHIP(S): T30R9W, T31R10W, T31R9W
TRUST(S): State Forest Transfer (1)

REGION: Olympic Region
COUNTY(S): Clallam
ELEVATION RGE: 320-880



- Harvest Unit
- Haul Route
- Other Route
- View Only Route
- Power Lines
- Milepost Marker
- Distance Indicator
- Gate
- Rock Pit

DRIVING DIRECTIONS:

From downtown Port Angeles travel 5.5 miles west on US-101 and turn right on US-112, travel 16.5 miles west. Turn left on PA-S-1000, travel 3.9 miles to Fraggie Pit. Return to US-112 and turn left, travel 1.9 miles and turn left on PA-S-1100, travel 0.14 mile to the Sadie Creek Trailhead, Unit 1 is here adjacent to the trailhead. Continue 1.5 miles on PA-S-1100 to a pull out on the right side of the road. Unit 2 is adjacent to the road on the southside here, and Unit 3 is NW of here, and can be viewed along the trail heading NW from this pullout. Return to US-112, cross US-112 onto PA-S-2600, travel 0.9 mile to where right of way tags enter the woods. This right of way is Unit 7 and leads into Units 4 and 6. Return to US-112 and turn right, travel 0.95 mile to a pullout at the end of the PA-S-2700. From here hike 1 mile on PA-S-2700 passing through Units 9 and 8 before arriving at Unit 5. Unit 5 can also be viewed by parking along US-112 between milepost 40 and 41 and hiking into the woods east of US-112.





TIMBER NOTICE OF SALE

SALE NAME: SALMONBERRY SURPRISE

AGREEMENT NO: 30-106462

AUCTION: August 28, 2024 starting at 10:00 a.m.,
Olympic Region Office, Forks, WA

COUNTY: Clallam

SALE LOCATION: Sale located approximately 19 miles northwest of Forks, WA

**PRODUCTS SOLD
AND SALE AREA:**

All timber, except trees marked with a band of blue paint or bounded out by leave tree area boundary tags, any downed cedar, bounded by timber sale boundary tags and the CP-850 road in Unit 1; timber sale boundary tags in Unit 5.

All timber bounded by right-of-way boundary tags in Units 2, 3, and 4.

All forest products above located on part(s) of Sections 1 all in Township 30 North, Range 12 West, Sections 36 all in Township 31 North, Range 12 West, W.M., containing 110 acres, more or less.

CERTIFICATION: This sale is certified under the Sustainable Forestry Initiative® program Standard (cert no: BVC-SFIFM-018227)

ESTIMATED SALE VOLUMES AND QUALITY:

Species	Avg DBH	Ring Count	Total MBF	MBF by Grade								
				1P	2P	3P	SM	1S	2S	3S	4S	UT
Douglas fir	14.6	7	2,688						1,123	1,180	385	
Hemlock	13.6	6	1,366						431	680	255	
Red alder	12.9		266						23	54	161	28
Redcedar	12.8		112							90	22	
Sale Total			4,432									

MINIMUM BID: \$826,000.00

BID METHOD: Sealed Bids

PERFORMANCE

SECURITY: \$100,000.00

SALE TYPE: Lump Sum

EXPIRATION DATE: October 31, 2026

ALLOCATION: Export Restricted

BID DEPOSIT: \$82,600.00 or Bid Bond. Said deposit shall constitute an opening bid at the appraised price.

HARVEST METHOD: Ground Based 12%. Cable 88% Forest products sold under this contract shall be harvested and removed using cable, cable-tethered, and ground based equipment. Cable-tethered equipment is limited to sustained slopes of 75 percent and less. Ground based equipment is limited to tracked equipment on sustained slopes that are 45 percent and less. Rubber tired skidders and shovel logging must meet rutting and skidding requirements and harvest plan must be submitted and approved by the Contract Administrator. Logs being yarded over the inner gorge in Unit 5 must be bucked to no longer than 40 ft. Authority to use other equipment or to operate outside the equipment specifications detailed above must be approved in writing by the State. There are 30' Equipment Limitations Zones on all typed water.



TIMBER NOTICE OF SALE

ROADS: 56.70 stations of optional construction. 24.85 stations of required prehaul maintenance.
97.30 stations of optional prehaul maintenance.

ACREAGE DETERMINATION

CRUISE METHOD: Sale area was 100% GPS'd. Sale units were cruised using a variable plot sample

FEES: \$75,344.00 is due on day of sale. \$9.00 per MBF is due upon removal. These are in addition to the bid price.

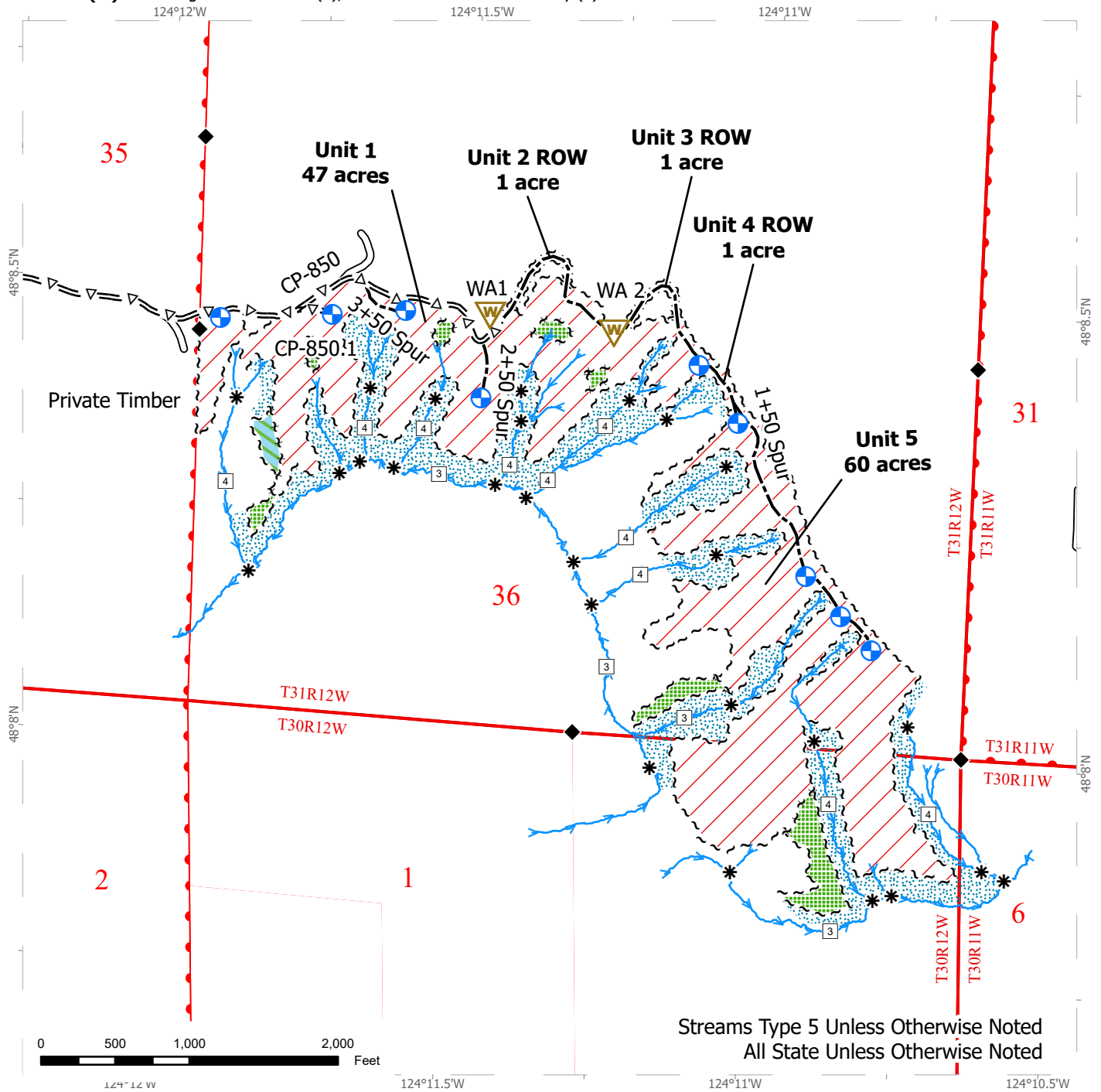
SPECIAL REMARKS: There is a locked gate on the Mary Clark Pit - contact the Olympic Region Dispatch Center at 360-374-2800 to obtain a AA1 key.

Purchaser must keep gates closed at nights and on weekends on the CP-850.

TIMBER SALE MAP

SALE NAME: SALMONBERRY SURPRISE
AGREEMENT #: 30-106462
TOWNSHIP(S): T30R12W, T31R12W
TRUST(S): Agricultural School (4), Common School and Indemnity (3)

REGION: Olympic Region
COUNTY(S): Clallam
ELEVATION RGE: 920'-1540'

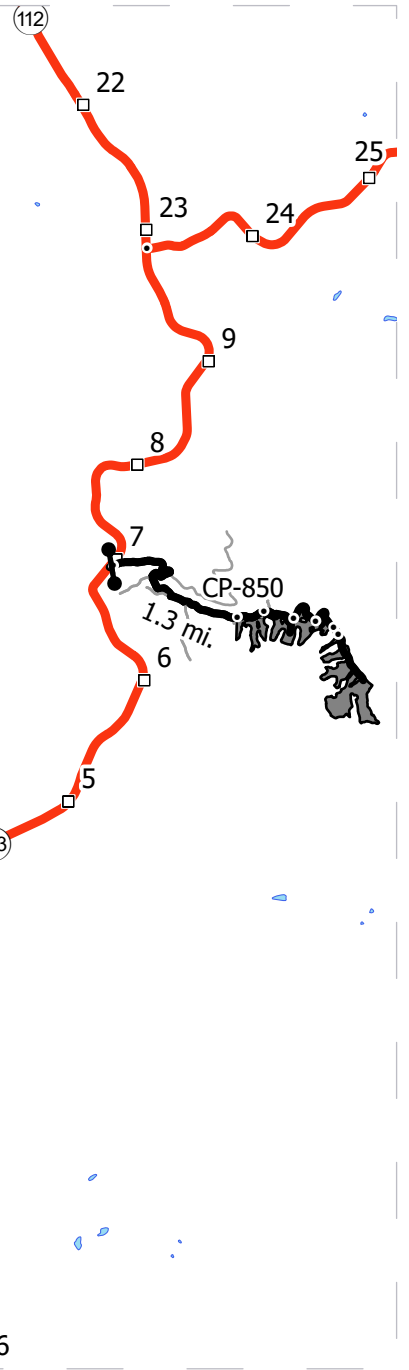
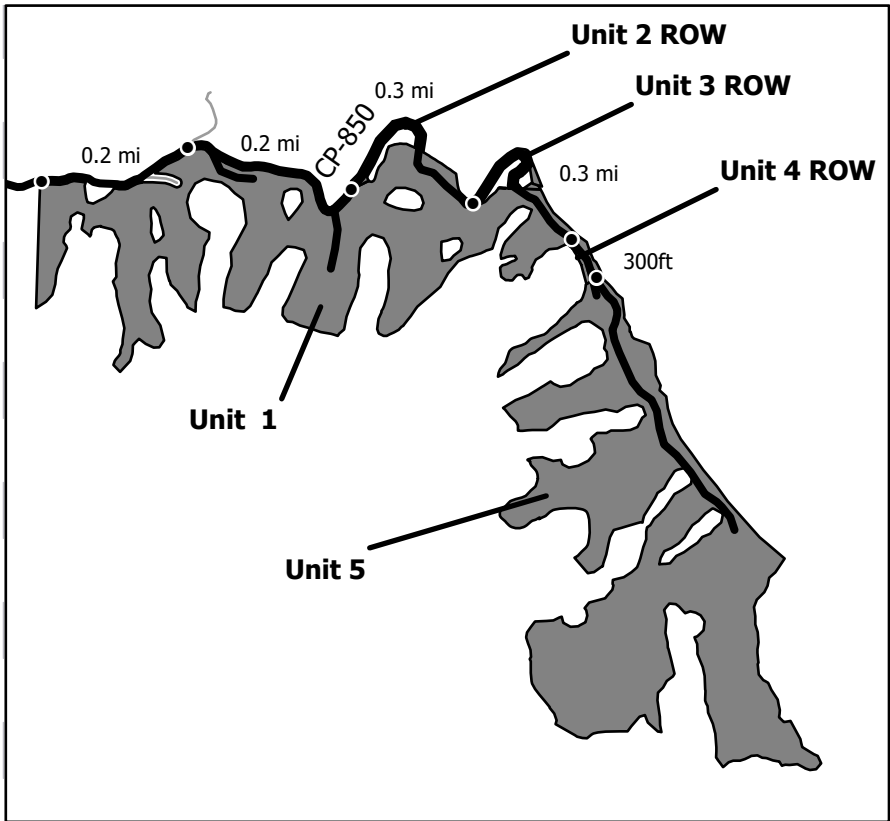


~ ~ ~ Sale Boundary Tags	□ Stream Type	Public Land Survey Townships
~ ~ ~ Leave Tree Tags	* Stream Break	DNR Managed Lands
~ ~ ~ Right of Way Tags	◆ Survey Monument	Sale Area
Existing Roads	Leave Tree Area	Proposed Landing
=Δ= Optional Pre-Haul Maintenance	Non-Tradeable Leave Area	Waste Area
Optional Construction	Riparian Mgt Zone	
Streams	Public Land Survey Sections	

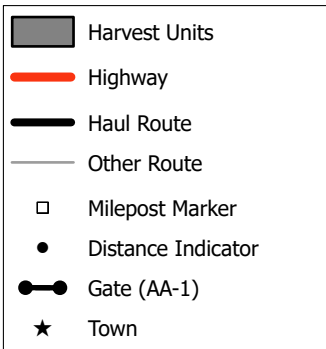


SALE NAME: SALMONBERRY SURPRISE
AGREEMENT #: 30-106462
TOWNSHIP(S): T30R12W, T31R12W
TRUST(S): Agricultural School (4), Common School and Indemnity (3)

REGION: Olympic Region
COUNTY(S): Clallam
ELEVATION RGE: 920'-1540'



Map may not be to scale

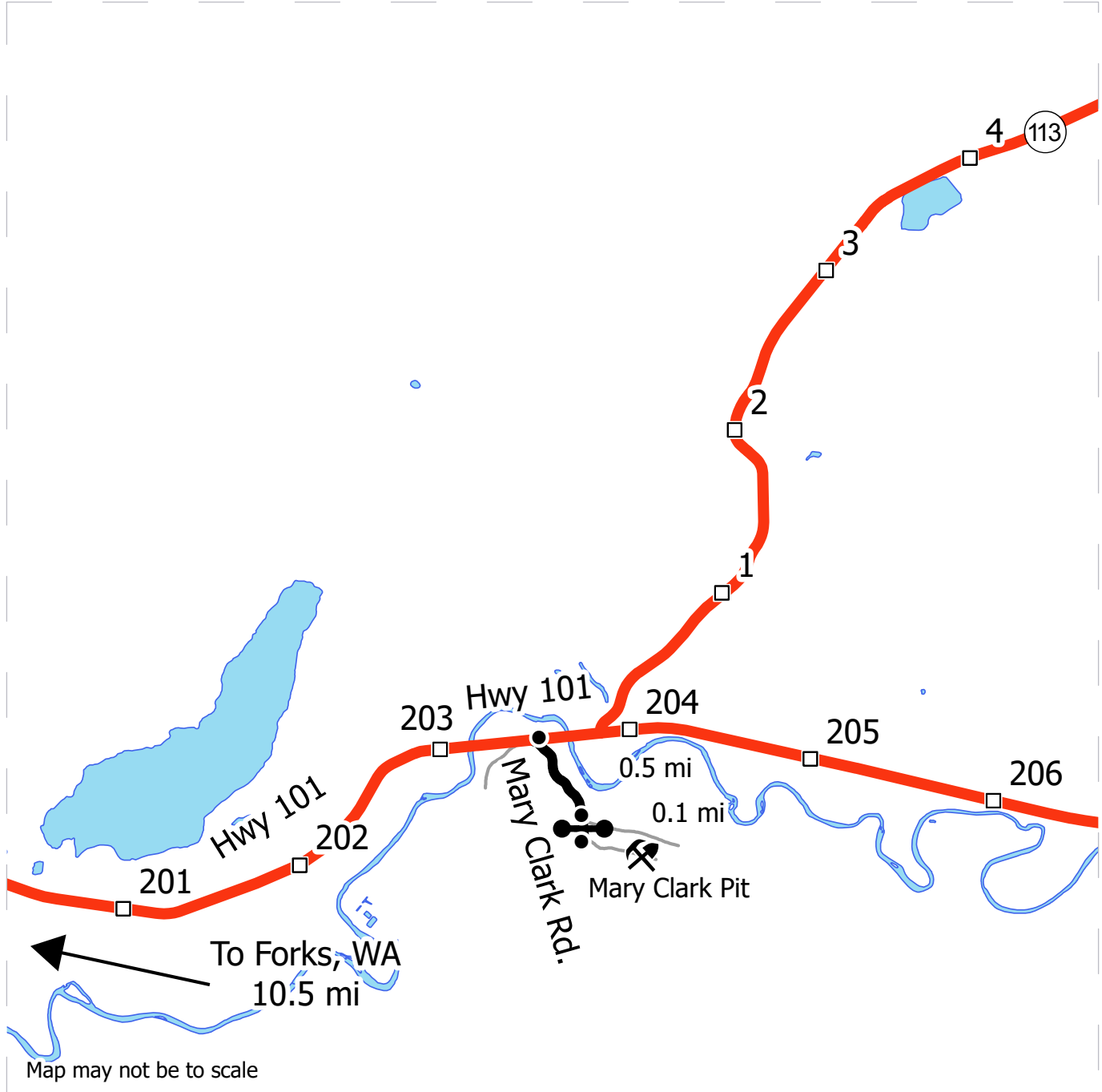


DRIVING DIRECTIONS:

Unit 1: From Forks, travel north on Hwy 101 for 10.5mi. Turn left onto SR 113 and continue for 7 mi. Turn right onto the CP-850 and continue for 1.3 mi to the unit.
Unit 2 ROW: From the beginning of unit 1, continue on CP-850 for 0.2 mi. Keep right on CP-850 for 0.2 mi to Unit 2 ROW where the road ends.
Unit 3 ROW: From the beginning of Unit 2 ROW, continue on foot east along orange flag line through Unit 2 ROW and Unit 1 for 0.3 mi to Unit 3 ROW.
Unit 4 ROW: From the beginning of Unit 3 ROW, follow orange flag line east, on foot, through Unit 3 ROW and Unit 1 for 0.3 mi to Unit 4 ROW.
Unit 5: Follow orange flag line southeast, on foot, through Unit 4 ROW for 300 ft to Unit 5.

SALE NAME: SALMONBERRY SURPRISE
AGREEMENT #: 30-106462
TOWNSHIP(S): T30R12W, T31R12W
TRUST(S): Agricultural School (4), Common School and Indemnity (3)

REGION: Olympic Region
COUNTY(S): Clallam
ELEVATION RGE: 920'-1540'



- Highway
- Haul Route
- Other Route
- Milepost Marker
- Distance Indicator
- Gate (AA-1)
- ⚡ Rock Pit

DRIVING DIRECTIONS:

Mary Clark Pit: From Forks, WA, travel north on Hwy 101 for 10.5 mi. Turn right onto Mary Clark Road and continue for 0.5 mi. Turn right onto Mary Clark Pit Access Road and continue for 0.1 mi.





TIMBER NOTICE OF SALE

SALE NAME: Q GOLD RUSH

AGREEMENT NO: 30-106238

AUCTION: August 27, 2024 starting at 10:00 a.m., Northeast Region Office, Colville, WA

COUNTY: Spokane

SALE LOCATION: Sale located approximately 5 miles east of Mica, WA.

PRODUCTS SOLD AND SALE AREA:

All green conifer species except for leave trees banded with blue paint or bounded by yellow leave tree area tags in Units 1, 2, 3, 4 and 5 bounded by white timber sale boundary tags; and all right of way timber bounded by orange right of way tags.

All forest products above located on part(s) of Sections 16 all in Township 24 North, Range 45 East, W.M., containing 285 acres, more or less.

CERTIFICATION: This sale is certified under the Sustainable Forestry Initiative® program Standard (cert no: BVC-SFIFM-018227)

ESTIMATED SALE VOLUMES AND QUALITY:

Table with columns: Species, Avg DBH, Ring Count, Total MBF, and MBF by Grade (P, SM, 1S, 2S, 3S, 4S, 5S, 6S, UT). Rows include Douglas fir, Ponderosa pine, Grand fir, Redcedar, Hemlock, Larch, and Sale Total.

MINIMUM BID: \$780,000.00

BID METHOD: Sealed Bids

PERFORMANCE SECURITY:

\$100,000.00

SALE TYPE: Lump Sum

EXPIRATION DATE: October 1, 2026

ALLOCATION: Export Restricted

BID DEPOSIT: \$78,000.00 or Bid Bond. Said deposit shall constitute an opening bid at the appraised price.

HARVEST METHOD: Ground based equipment, Rubber tired skidder, and Track skidder. Falling and Yarding will not be permitted from February 1 to June 1 unless authorized in writing by the Contract Administrator due to spring breakup.

ROADS: 14.25 stations of required construction. 265.40 stations of required prehaul maintenance. Road construction will not be permitted from November 15 to June 1 unless authorized in writing by the Contract Administrator due to frozen conditions and spring breakup. The hauling of forest products will not be permitted from February 1 to June 1 unless authorized in writing by the Contract Administrator due to spring breakup.

ACREAGE DETERMINATION



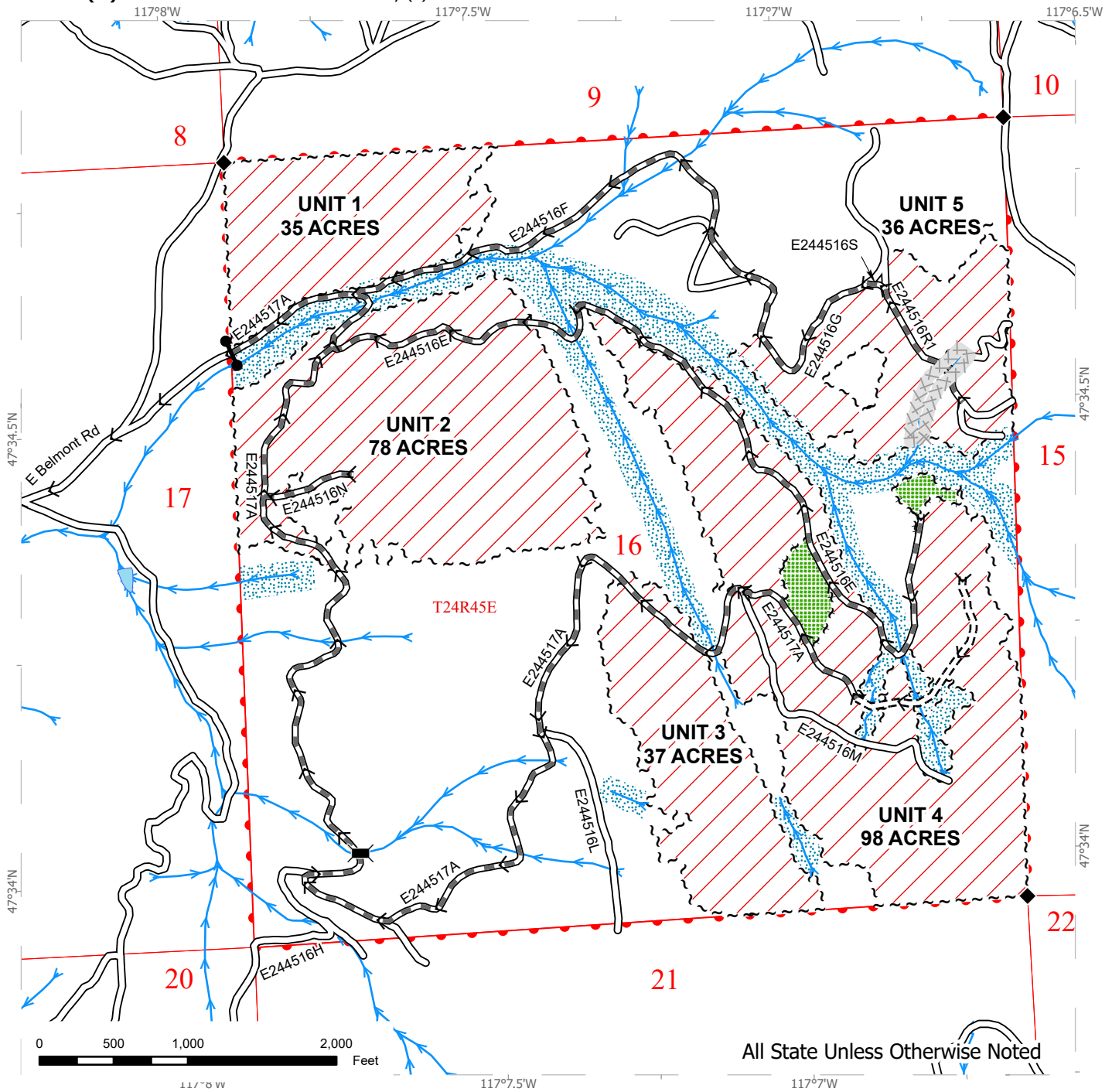
TIMBER NOTICE OF SALE

- CRUISE METHOD:** Acreage determined using GPS methods. Acreage shown above is net harvest acres in harvest units. Ponderosa pine and western redcedar: 8.0 - 17.5 inches dbh has a minimum top of 4.6 inch dib. All other species: 7.0 - 17.5 inches dbh has minimum top of 4.6 inch dib. All species 17.6 inches and greater dbh have a minimum top dib of 40% of dob at 16 feet or a 6 inch top whichever is greater.
- FEES:** \$57,681.00 is due on day of sale. \$9.00 per MBF is due upon removal. These are in addition to the bid price.
- SPECIAL REMARKS:** Locked gate restricts access to the sale area. Contact the Northeast Region Office at (509) 684-7474 for access.

TIMBER SALE MAP

SALE NAME: Q GOLD RUSH
AGREEMENT #: 30-106238
TOWNSHIP(S): T24R45E
TRUST(S): Common School and Indemnity (3)

REGION: Northeast Region
COUNTY(S): Spokane
ELEVATION RGE: 2760-3800

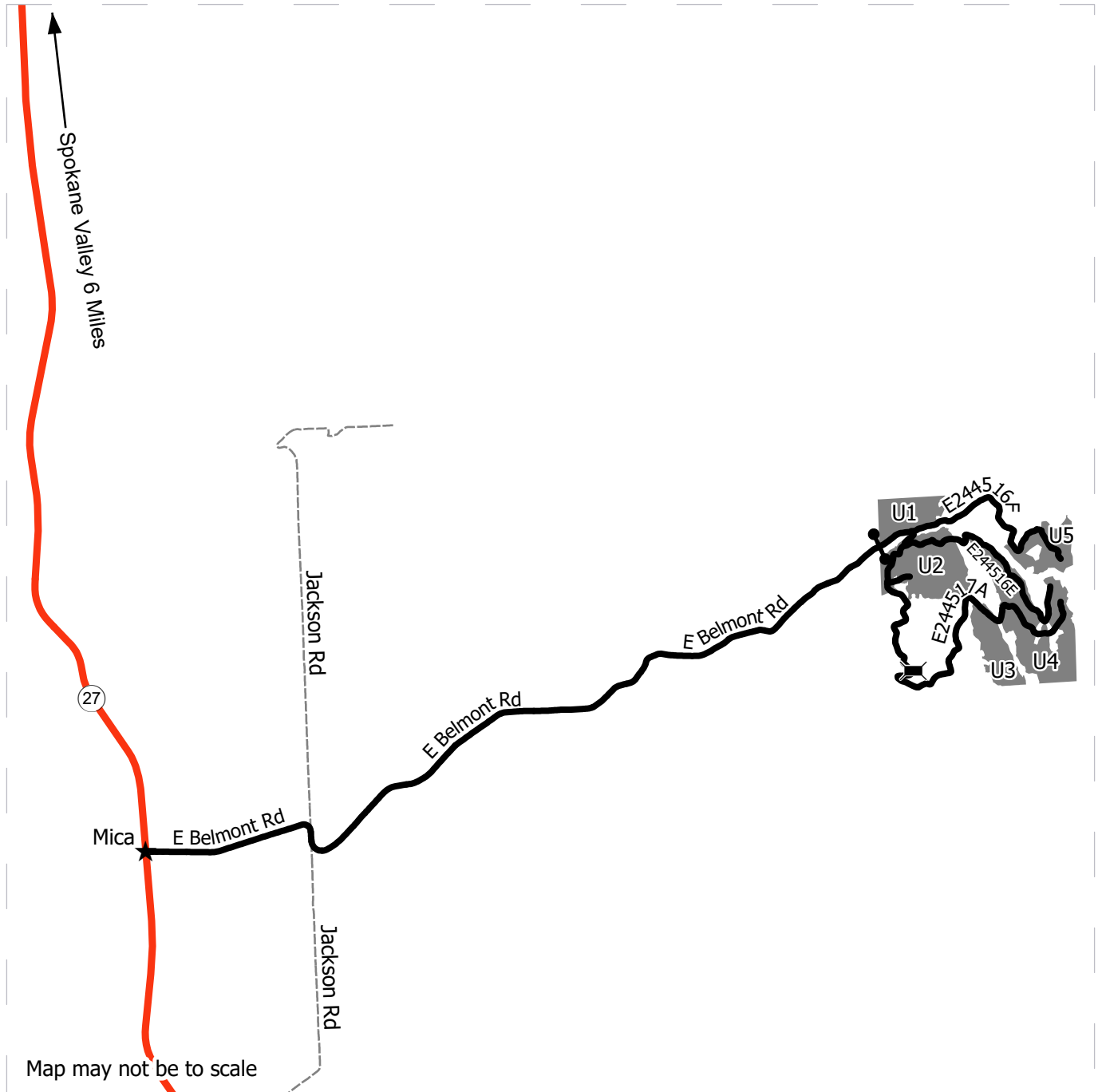


Public Land Survey Sections	Leave Tree Area	Streams
DNR Managed Lands	Riparian Mgt Zone	Survey Monument
Variable Retention Harvest	Existing Roads	Bridge
Sale Boundary Tags	Required Pre-Haul Maintenance	Locked Gate
Leave Tree Tags	Required Construction	Haul Route
Right of Way Tags = ~ 1 acre	Equipment Limitation Zone	

OVERVIEW MAP

SALE NAME: Q GOLD RUSH
AGREEMENT #: 30-106238
TOWNSHIP(S): T24R45E
TRUST(S): Common School and Indemnity (3)

REGION: Northeast Region
COUNTY(S): Spokane
ELEVATION RGE: 2760-3800



DRIVING DIRECTIONS:

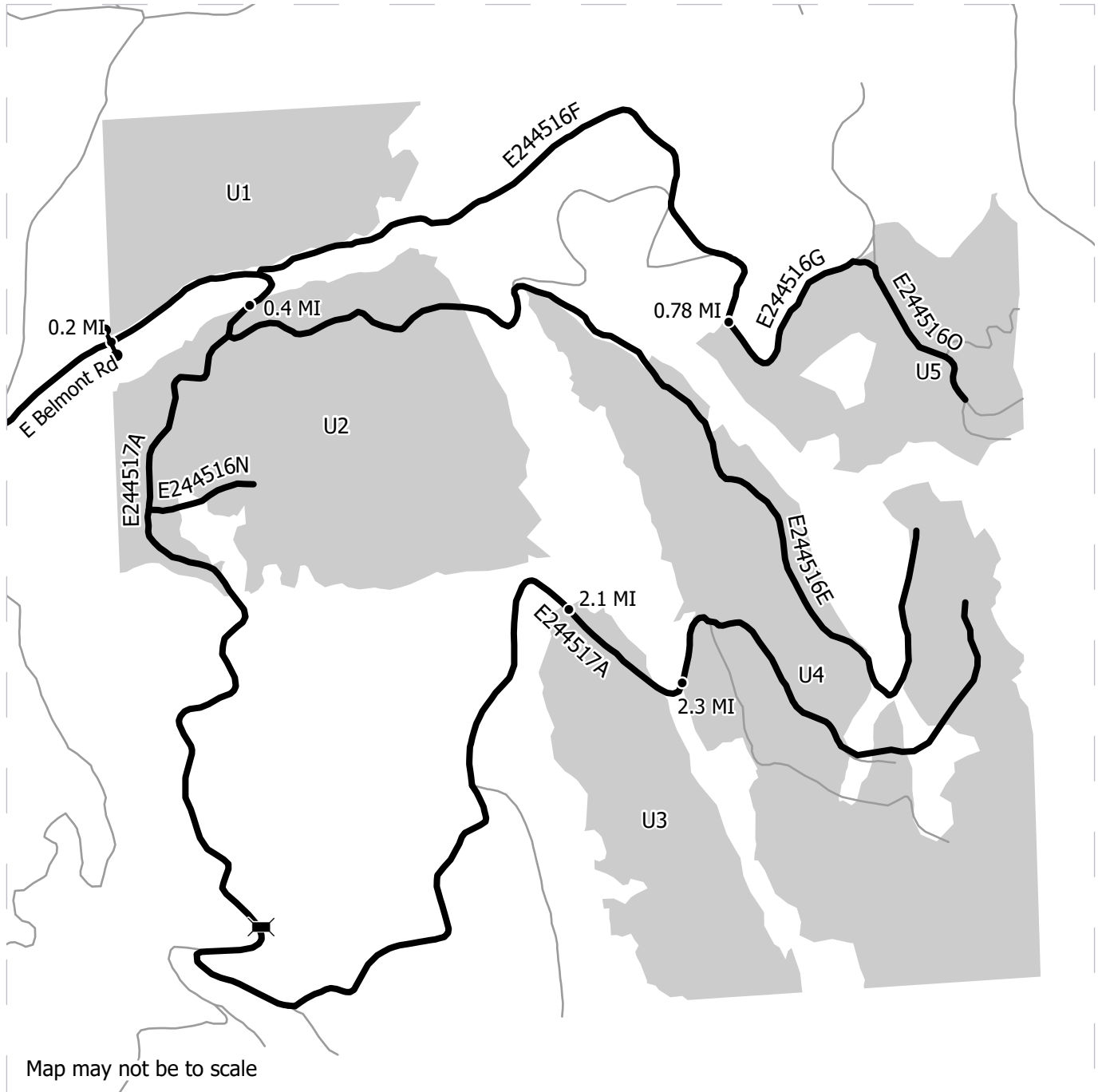
Unit 1: Access via Highway 27 headed south, left on E Belmont Rd, keep straight onto S Jackson Rd, bear left onto E Belmont Rd, arrive at the trail head and go through the yellow gate. Stay right at the first fork, continuing on E244517A road for 0.2 miles. Unit 1 is on northside of road.
 Unit 2: Access via Highway 27 headed south, left on E Belmont Rd, keep straight onto S Jackson Rd, bear left onto E Belmont Rd, arrive at the trail head and go through the yellow gate. Stay right at the first fork, continuing on E244517A road for 0.4 miles. Road goes through west portion of Unit 2.
 Unit 3: Access via Highway 27 headed south, left on E Belmont Rd, keep straight onto S Jackson Rd, bear left onto E Belmont Rd, arrive at the trail head and go through the yellow gate. Stay right at the first fork, continuing on E244517A road for 2.1 miles. Road goes through north end of Unit 3.
 Unit 4: Access via Highway 27 headed south, left on E Belmont Rd, keep straight onto S Jackson Rd, bear left onto E Belmont Rd, arrive at the trail head and go through the yellow gate. Stay right at the first fork, continuing on E244517A road for 2.3 miles. Road goes through middle Unit 4.
 Unit 5: Access via Highway 27 headed south, left on E Belmont Rd, keep straight onto S Jackson Rd, bear left onto E Belmont Rd, arrive at the trail head and go through the yellow gate. Stay right at the first fork, stay left at the second fork, continue on E244516F road for 0.78 miles. Unit 5 is on southeast side of road.



DRIVING MAP

SALE NAME: Q GOLD RUSH
AGREEMENT #: 30-106238
TOWNSHIP(S): T24R45E
TRUST(S): Common School and Indemnity (3)

REGION: Northeast Region
COUNTY(S): Spokane
ELEVATION RGE: 2760-3800



	Harvest Unit
	Haul Route
	Other Route
	Distance Indicator
	Bridge
	Gate

DRIVING DIRECTIONS:

Unit 1: Access via Highway 27 headed south, left on E Belmont Rd, keep straight onto S Jackson Rd, bear left onto E Belmont Rd, arrive at the trail head and go through the yellow gate. Stay right at the first fork, continuing on E244517A road for 0.2 miles. Unit 1 is on northside of road.

Unit 2: Access via Highway 27 headed south, left on E Belmont Rd, keep straight onto S Jackson Rd, bear left onto E Belmont Rd, arrive at the trail head and go through the yellow gate. Stay right at the first fork, continuing on E244517A road for 0.4 miles. Road goes through west portion of Unit 2.

Unit 3: Access via Highway 27 headed south, left on E Belmont Rd, keep straight onto S Jackson Rd, bear left onto E Belmont Rd, arrive at the trail head and go through the yellow gate. Stay right at the first fork, continuing on E244517A road for 2.1 miles. Road goes through north end of Unit 3.

Unit 4: Access via Highway 27 headed south, left on E Belmont Rd, keep straight onto S Jackson Rd, bear left onto E Belmont Rd, arrive at the trail head and go through the yellow gate. Stay right at the first fork, continuing on E244517A road for 2.3 miles. Road goes through middle Unit 4.

Unit 5: Access via Highway 27 headed south, left on E Belmont Rd, keep straight onto S Jackson Rd, bear left onto E Belmont Rd, arrive at the trail head and go through the yellow gate. Stay right at the first fork, stay left at the second fork, continue on E244516F road for 0.78 miles. Unit 5 is on southeast side of road.



**State of Washington
Department of Natural Resources**

SEALED BID FORM

Sale Name _____ Agreement Number _____

_____ hereby submits the following bid for timber.
(Print full, legal company name)

(Street address, City, State, Zip Code)

(Phone Number)

Lump Sum Bid (Not Including Fees) \$ _____ **For Total Sale**

Weight Scale Sale Bid (Not Including Fees) \$ _____ / **Ton**

Scribner Scale Sale Bid (Not Including Fees) \$ _____ / **MBF For Biddable Species**

BID DEPOSIT

Bid Deposit Amount: \$ _____

Bid Deposit Type:

- Cash, certified check, cashiers check, or money order
 Per Sale Bid Bond
 Statewide Bid Bond, Number _____

Within 30 days of confirmation date the successful bidder agrees to furnish Performance Security acceptable to the State in the amount specified on the Notice of Sale. Performance Security must guarantee performance of all provisions of the contract and payment of any damages caused by operations under the contract or resulting from the successful bidders noncompliance with any rule or law.

Bidder's Warranty and Bid Signature

By signing and submitting this bid as an offer to purchase forest products from the State, the Bidder hereby warrants to the State that they have had an opportunity to fully inspect the sale area and the forest products being sold. Bidder further warrants to the State that they enter this bid based upon their own judgments of the value of the forest products, formed after their own examination and inspection of both the timber sale area and the forest products being sold. Bidder also warrants to the State that they enter this bid without any reliance upon the volume estimates, acreage, appraisals, pre-bid documentation, or any other representation by the Washington State Department of Natural Resources.

_____ Date _____
(Signature of Authorized Representative submitting this bid)

(Print name and title of Authorized Representative submitting this bid)

Note: all sales are subject to confirmation by the Commissioner of Public Lands (Refer 79.15.120)

Instructions For Completing Sealed Bid Form

All bids submitted for the purchase of forest products being sold by the Washington State Department of Natural Resources must have an original signature on behalf of the person or entity submitting the bid, and must be on the form provided in this booklet or a photocopy thereof. The DNR will not accept bids that are not signed, and will not accept bids that are not on the current, approved bid form. All appropriate blanks on bid form must be completed including the bid bond number if the bidder is relying upon a bid bond for bid deposit.

For more specific information, contact the appropriate region office.

In-Person Bids

- A. Sealed bids must be in auction box before 10:00 a.m. on the day of auction at the location specified in the Timber Notice of Sale.
 - B. Sealed bids must be submitted in an envelope with the name of the sale, the bidder's name and the contract number clearly written on the outside of the envelope. The full legal name and business address of the bidder must be inserted where indicated on the form, and must be on the bid bond and timber sale contract. The bid form must be signed by an authorized representative. When a bidder has more than one person authorized to bid, documentation of those persons with signature authority for bidding must accompany the bid or be on file at the region office. Sealed bid envelopes are available at all region offices. One bid per envelope.
 - C. Sealed bid envelopes **must** contain a completed bid form and a bid deposit.
 - D. Sealed bid envelopes **may** contain a check for the Initial Deposit amount and a check for fees.
-

Mailed Bids

- A. Bids that are mailed are required to have printed on the outside: "DO NOT OPEN UNTIL SALE DATE. SEALED BID ENCLOSED". The sealed bid envelope(s) will be enclosed inside the mailed-in envelope. Mailed bids must be submitted in an envelope with the name of the sale, the bidder's name and the agreement number clearly written on the outside of the envelope. The full legal name and business address of the bidder must be inserted where indicated on the form, and must be the same on the bid bond and timber sale contract. The Sealed Bid Form must be signed by an authorized representative. When a bidder has more than one person authorized to bid, documentation of those persons with signature authority for bidding must accompany the bid or be on file at the region office. Mail-in envelopes are available at all region offices. One bid per mailed-in envelope.
 - B. Bids that are mailed will be accepted up to 4:30 p.m. the last business day before the auction by the region office in which the sale is located. Bidders assume the risk for the method of delivery. The DNR assumes no responsibility for any delays caused by any delivery service.
 - C. Sealed bid envelopes **must** contain a completed bid form and a bid deposit.
 - D. Sealed bid envelopes **may** contain a check for the Initial Deposit amount and a check for fees.
-

Initial Deposit:

Lump Sum Sales - Initial Deposit must equal 10% of the total bid submitted.
(25% if the bidder is a defaulter as defined under WAC 332-140-300)

Weight Scale Sales - Initial Deposit must equal 10% of the bid per ton multiplied by the total sale estimated tonnage. (25% if the bidder is a defaulter as defined under WAC 332-140-300)

Scribner MBF Scale Sales - Initial Deposit must equal 10% of the bid per MBF multiplied by the total sale MBF. (25% if the bidder is a defaulter as defined under WAC 332-140-300)

**State of Washington
Department of Natural resources**

STATEWIDE BID BOND

Bond Number _____

_____ of _____,
(Principal's Name) (City, State)

hereinafter called PRINCIPAL, and _____ hereinafter called
SURETY,

a corporation organized under the laws of the State of _____, and authorized to transact surety business in the State of Washington, as SURETY, are held and firmly bound jointly and severally to the State of Washington, Department of Natural Resources, hereinafter called the STATE, in the sum of \$150,000.00 Dollars, lawful money of the United States of America. The PRINCIPAL binds itself, its heirs, executors, administrators, successors, and assigns, and the SURETY binds itself, its successors, and assigns, all jointly and severally.

This bond shall be governed by the laws of the State of Washington. In the event of a lawsuit involving this bond, a venue shall be proper only in Thurston County Superior Court.

Signed, sealed and dated this _____ day of _____, _____ .
(month) (year)

This statewide bid bond may be used for bidding between the following dates:

Starting:

Ending:

It Is Hereby Understood and Agreed:

If PRINCIPAL is an apparent high bidder, PRINCIPAL shall before 4:30 p.m ., on day of sale, pay to the STATE the amount of the initial deposit in the form of a certified check, cashier's check, bank draft, cash or money order, then this agreement shall be void for the sale on which the payment is made; otherwise, it will remain in force.

SURETY will make payment to the STATE within ten days after demand by the STATE if the PRINCIPAL shall fail to make timely payment as described above.

The SURETY may cancel this bond by sending a written notice to the STATE, not less than forty-five days before a cancellation date; liability shall terminate as to acts or omissions of the PRINCIPAL that occur after the cancellation date.

The PRINCIPAL and the SURETY executed this bond on the date first mentioned.

Principal: (Above named)

Signature: _____

Name: _____

Title: _____

Address: _____

City: _____
State & Zip Code

Surety: (Above named)

Signature: _____

Name: _____

Title: _____

Address: _____

City: _____
State & Zip Code

Surety: (Local Office of Authorized agent)

Signature: _____

Name: _____

Title: _____

Address: _____

City: _____
State & Zip Code

Notary or Company Seal in Space Above

Instructions for Completing Timber Sale Statewide Bid Bond

- A. This form is authorized for use as bid guaranty to qualify for bidding on Washington State Department of Natural Resources timber sales.
- B. The Statewide Bid Bond may be used as bid guaranty on more than one timber sale.
- C. The full legal name and business address of the PRINCIPAL must be inserted where indicated and must be the same as will appear on the bidding record and timber sale contract. The bond must be signed by an authorized person. Additionally, the name must be typed or printed below the signature and title must be shown.
- D. The full legal name and business address of the SURETY must be inserted where indicated. The bond must be signed by an authorized person. Additionally, the name must be typed or printed below the signature and the title must be shown.
- E. If the SURETY does not have a Washington State office or resident agent, but is authorized to transact surety business in the State of Washington as SURETY, it may leave this signature block blank.
- F. This form must be received by the Department of Natural Resources, Product Sales & Leasing Division, PO BOX 47016, Olympia, Washington, 98504-7016, ten days in advance of the auction.
- G. **The State reserves the right to reject *incomplete or incorrect* bid bond forms, making such forms unacceptable as bid guaranty.**

**State of Washington
Department of Natural Resources**

Timber Sale Per Sale Bid Bond

Bond Number _____

_____ of _____, hereinafter called PRINCIPAL, and _____, hereinafter called SURETY, a corporation organized under the laws of the State of _____ and authorized to transact surety business in the State of Washington, as SURETY, are held and firmly bound jointly and severally to the State of Washington, Department of Natural Resources, hereinafter called the STATE, in the sum of \$ _____ Dollars, lawful money of the United States of America. The PRINCIPAL binds itself, its heirs, executors, administrators, successors, and assigns, and the SURETY binds itself, its successors, and assigns, all jointly and severally.

This bond shall be governed by the laws of the State of Washington. In the event of a lawsuit involving this bond, venue shall be proper only in Thurston County Superior Court.

Signed, sealed, and dated this _____ day of _____, 20 _____.

BID IDENTIFICATION:

SALES NAME(S)	REQUIRED DEPOSIT	AGREEMENT NUMBER(S)

DATE OF BID: _____

It Is Hereby Understood and Agreed:

If PRINCIPAL is the high bidder on the sale(s) identified above and, within ten (10) days of the day of sale, transmits cash, certified check, cashier's check, bank draft or money order, payable to the STATE, in the amount of the bid guaranty required by the terms of the Notice of Sale, *then* this obligation shall be void; *otherwise*, it shall remain in force.

SURETY will make payment to the STATE within ten (10) days after demand by the STATE whenever the PRINCIPAL shall fail to make timely payment as described above.

IN WITNESS WHEREOF: the PRINCIPAL and the SURETY have caused this bond to be executed on the date first mentioned.

SECOND OFFICER:

Signature: _____

Name: _____

Title: _____

PRINCIPAL: (Above Named)

Signature: _____

Name: _____

Title: _____

SURETY: (Local Office of Authorized Agent)

Signature: _____

Name: _____

Title: _____

Address: _____

City: _____

State & Zip: _____

SURETY: (Above Named)

Signature: _____

Name: _____

Title: _____

Address: _____

City: _____

State & Zip _____

NOTARY OR COMPANY SEAL IN THE SPACE ABOVE

Instructions for Completing Timber Sale Per Sale(s) Bid Bond

- A. This form is authorized for use as bid guaranty to qualify for bidding on Washington State Department of Natural Resources timber sales.
- B. The Timber Sale Per Sale Bid Bond may be used as bid guaranty on more than one timber sale auction held the same date at the same location.
- C. The full legal name and business address of the PRINCIPAL must be the same as will appear on the bidding record and timber sale contract. The bond must be signed by an authorized person, the name typed or printed, and title shown. If PRINCIPAL is a corporation, a second officer must sign in the space to the left of the signature of the officer executing for the PRINCIPAL.
- D. The full legal name and business address of the SURETY must be inserted where indicated. The bond must be signed by an authorized person. Additionally, the name must be typed or printed below the signature and the title must be shown. If this person is not an officer of the corporation, evidence of authority must be submitted.
- E. If the SURETY does not have a Washington State office or resident agent, but is authorized to transact surety business in the State of Washington as Surety, it may leave the local office signature block blank.
- F. The date of the bid bond must not be later than the auction date.
- G. **The State reserves the right to reject incomplete or *incorrect* bid bond forms, making such forms unacceptable as guaranty.**

STATE OF WASHINGTON
DEPARTMENT OF NATURAL RESOURCES
LOG SORT SEALED BID FORM

Sale Name _____ Agreement Number _____ Date _____

_____ hereby submits the following bid for delivered logs.
(Print Company Name)

_____ Telephone Number _____
(Print Name Authorized Company Representative) (Contact for bid result notification)

(Street Address)

(City, State and Zip)

Agreement Number	Sort Number	<u>Delivered</u> Logs Bid Amount (fill in one only)	
		\$ /MBF	\$ /TON

Bid Deposit Amount \$ _____

- Bid Deposit Type:**
- Cash, Certified Check, Cashiers Check, or Money Order
 - Per Sale Bid Bond
 - Statewide Bid Bond, Number _____

The successful bidder agrees to furnish payment security acceptable to the State in the amount as described in clause P-041 of the Purchaser’s contract prior to log delivery and at a date to be determined by the State.

Bidder’s Warranty and Bid Signature

By signing and submitting this bid as offer to purchase forest products from the State, the Bidder hereby warrants to the State that they have had an opportunity to fully inspect the sale area and the forest products being sold. Bidder further warrants to the State that they enter this bid based solely upon their own judgment of the value of the forest products, formed after their own examination and inspection of both the timber sale area and the forest products being sold. Bidder also warrants to the State that they enter this bid without any reliance upon the volume estimates, acreage estimates, appraisals, pre-bid documentation, or any other representation by the State Department of Natural Resources.

(Signature of Authorized Representative submitting this bid)

(Date of Signature)

(Print name and title of Authorized Representative submitting this bid)

NOTES: A separate bid form is required for each log sort bid and must be delivered in a separate envelope. Photocopies of this bid form may be used. Each photocopy must have original signatures. Final contract award is contingent upon the State’s haul cost analysis. Actual haul route may vary and is subject to change at the State’s discretion. All sales are subject to confirmation by the Commissioner of Public Lands as per RCW 79.15.100.

LOG SORT SEALED BID SUPPLEMENTAL INFORMATION FORM_____
(Print Company Name)_____
(Sale Name)_____
(Agreement Number)_____
(Sort Number)_____
(email: optional for DNR production report distribution)**Log Manufacturing Specifications:****Sawlog and Peeler sorts:** Enter at least one preferred log length including trim for each log length range below.**Pole sorts (Distribution):** Enter three or more lengths. Attach preferred manufacturing information.**Pole sorts (Transmission):** Enter six or more lengths. Attach preferred manufacturing information.**Tonnage sorts:** See bid form instructions for required log lengths. Enter additional custom lengths as desired.

Log Length Ranges	Bidder's Preferred Log Lengths
16 ft. through 20 ft.	
22 ft. through 30 ft.	
32 ft. through 40 ft.	
Distribution Poles – 35 ft. through 55 ft.	
Transmission Poles – 60 ft.+	

Log Delivery Information:**1) Designate the point of delivery and address (must be a street address)**_____
(Location Name)_____
(Street Address)_____
(City, State and Zip)**2) Designate the state approved Scaling and Weighing facilities closest to the point of delivery as needed.****Scaling Location Information****Weighing Location Information**_____
(Scaling Location Name)_____
(Weighing Location Name)_____
(Third Party Scaling Organization)_____
(Weighing Location Owner)_____
(Scaling Location Street Address)_____
(Weighing Location Street Address)_____
(Scaling Location City, State and Zip)_____
(Weighing Location City, State and Zip)

Final contract award is contingent upon the State's haul cost analysis. Actual haul route may vary and is subject to change at the State's discretion. Additional terms or conditions requested by the bidder on or attached to the Log Sort Sealed Bid or Supplemental Information Forms are informational only and non-binding.

Instructions for Completing the Log Sort Sealed Bid and Supplemental Information Forms.

All bids submitted for the purchase of forest products being sold by the Washington State Department of Natural Resources must have an original signature on behalf of the person or entity submitting the bid, and must be on the form(s) provided in this booklet or a photocopy thereof. The DNR will not accept bids that are not signed, and will not accept bids that are not on the current, approved bid form. All appropriate blanks including Agreement Number, Sort Number, Bid amount (per mbf or ton as appropriate for the sort), Bid deposit amount and type. Signatures and date on bid form must be completed including the bid bond number if bidder is relying upon a bid bond for bid deposit.

Bids shall not be accepted if a completed '**Log Sort Sealed Bid Supplemental Information Form**' is not included with the approved '**Log Sort Sealed Bid Form**'.

Required log lengths for tonnage sorts: Preferred log lengths for tonnage sawlog sorts shall include the following plus any additional lengths identified on the Bid Supplemental Information form:

Species Type	Preferred Lengths
Conifer Sorts	16', 20', 24', 26', 32', 40'
Hardwood Sorts	18', 20', 26', 28', 30', 36', 38', 40'

For more specific information, contact the appropriate region office.

In-Person Bids

- A. Sealed bids must be in auction box or auction envelope before 10:00 a.m. on the day of sale at the location specified in the notice of sale.
- B. Sealed bids must be submitted in an envelope with the name of the sale, the bidder's name and the contract agreement number clearly written on the outside of the envelope. The full legal name and business address of the bidder must be inserted where indicated on the form, and must be the same as the name on the bid bond and timber sale contract. The bid form must be signed by an authorized person. When a bidder has more than one person authorized to bid, then documentation of those persons with signature authority for bidding must accompany the bid or be on file at the region office. Sealed bid envelopes are available at all region offices. One bid per envelope.
- C. Sealed bid envelopes must contain the following:
 1. A completed '**Log Sort Sealed Bid Form**';
 2. A completed '**Supplemental Information Form**' and;
 3. A bid deposit

Mailed Bids

- A. Mail-in bid envelopes are required to have printed on the outside: "DO NOT OPEN UNTIL SALE DATE. SEALED BID ENCLOSED." The sealed bid envelope(s) will be enclosed inside the mailed-in envelope. Mailed bids must be submitted in an envelope with the name of the sale, the bidder's name and the agreement number clearly written on the outside of the envelope. The full legal name and business address of the bidder must be inserted where indicated on the form, and must be the same on the bid bond and timber sale contract. The bid form must be signed by an authorized person. When a bidder has more than one person authorized to bid, then documentation of those persons with signature authority for bidding must accompany the bid or be on file at the region office. Mail-in envelopes are available at all region offices. One bid per mailed-in envelope.
- B. Mail-in or otherwise delivered bids will be accepted up to 4:30 p.m. the last business day before the auction by the region office in which the sale is located. Bidders assume the risk for the method of delivery they chose. The DNR assumes no responsibility for any delays caused by any delivery service.
- C. Sealed bid envelopes must contain the following:
 1. A completed '**Log Sort Sealed Bid Form**';
 2. A completed '**Log Sort Sealed Bid Supplemental Information Form**' and;
 3. A bid deposit

Department of Natural Resources Region Offices

Olympia Headquarters
 1111 Washington St SE
 MS 47000
 Olympia, WA 98504-7000
 (360) 902-1000
www.dnr.wa.gov

Product Sales & Leasing Division

1111 Washington St SE
 MS 47014
 Olympia, WA 98504-7014
 (360) 902-1600

South Puget Sound Region
 950 Fairman Ave N
 Enumclaw, WA 98022-9282
 (360) 825-1631

Pacific Cascade Region

601 Bond Road
 PO Box 280
 Castle Rock, WA 98611-0280
 (360) 577-2025

Southeast Region

713 Bowers Road
 Ellensburg, WA 98926-9301
 (509) 925-8510

Northwest Region

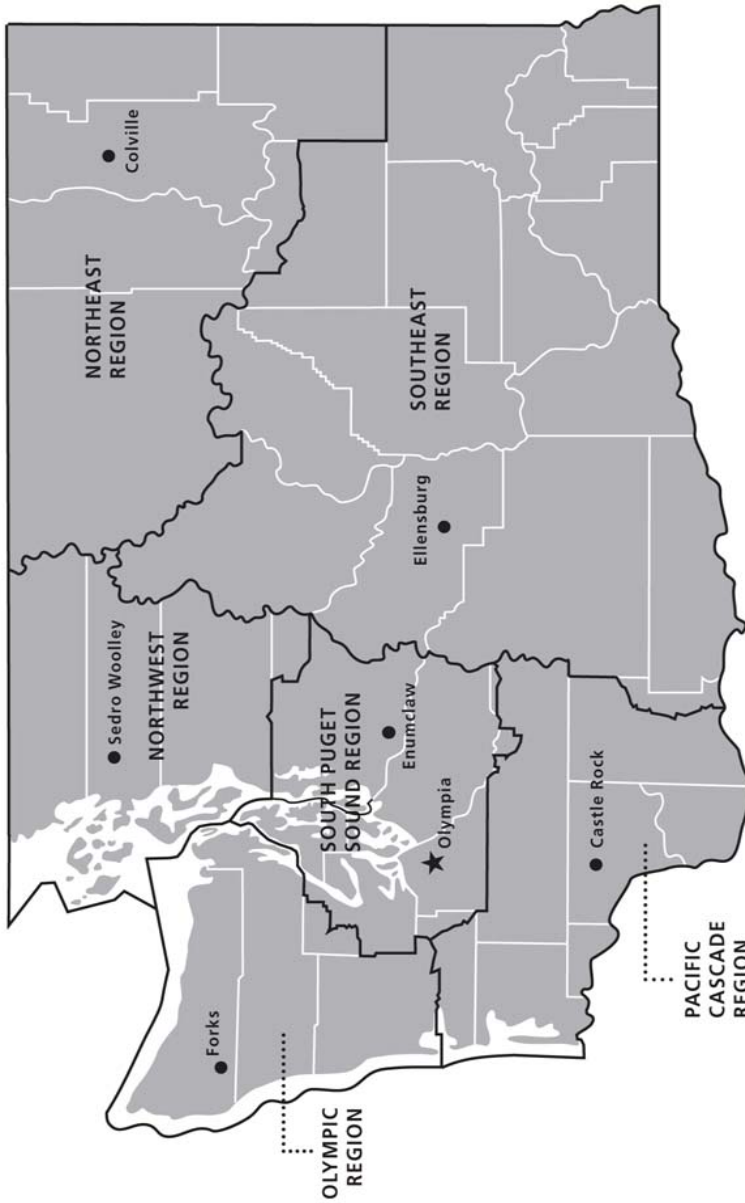
919 N Township St
 Sedro Woolley,
 WA 98284-9384
 (360) 856-3500

Olympic Region





411 Tillicum Lane
 Forks, WA 98331-9271
 (360) 374-2800

Northeast Region

225 S Silke Road
 PO Box 190
 Colville, WA 99114-0190
 (509) 684-7474



DNR REGIONS

-  DNR Region Boundaries
-  County Boundaries
-  DNR Region Office
-  Olympia Headquarters



WASHINGTON STATE DEPT OF
NATURAL RESOURCES



For more information about how public lands are managed visit DNR's web page at www.dnr.wa.gov

Fire, Burn Ban Information and Region Offices
 Toll Free: 1-800-527-3305 General TTY: 7-1-1





WASHINGTON STATE DEPT OF
**NATURAL
RESOURCES**

1111 WASHINGTON ST SE
MS 47014
OLYMPIA WA 98504-7014

www.dnr.wa.gov

For alternate formats
of this document,
Call (360) 902-1000
TRS: 7-1-1

PRINTED IN THE USA ON RECYCLED PAPER

