





# PRODUCT SALES & LEASING DIVISION

## TIMBER SALES PROGRAM

Presentation to the  
Board of Natural Resources

September 4, 2024



WASHINGTON STATE DEPARTMENT OF  
**NATURAL RESOURCES**



# AGENDA

- **July 2024 Results**
- **August 2024 Results**
- **Fiscal Year 2025 Update**
- **Current Proposed Sales  
(Action Item)**



# JULY 2024 RESULTS

## SALES OFFERED

- 6 sales
- 23.2 mmbf
- \$5.1 million
- \$221/mbf

## SALES SOLD

- 4 sales
- 17.8 mmbf
- \$6.1 million
- \$344/mbf
- Avg Bids: 1.58



# AUGUST 2024 RESULTS

## SALES OFFERED

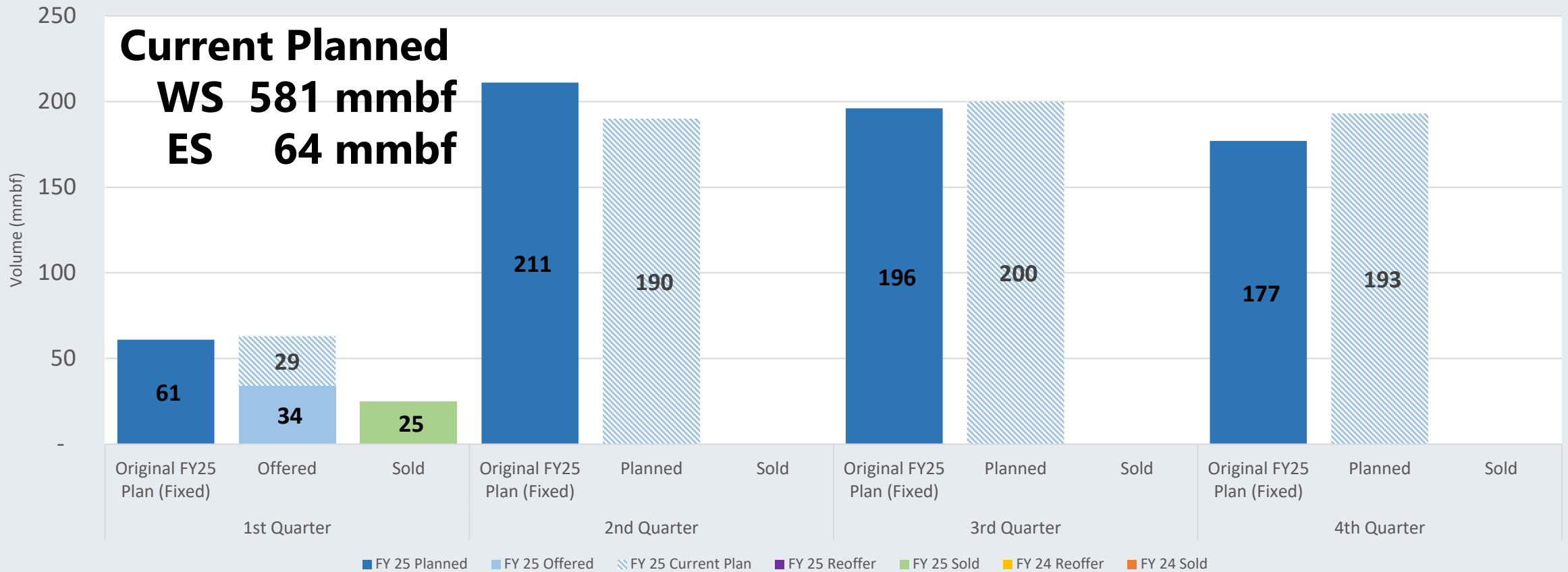
- 3 sales
- 10 mmbf
- \$2.2 million
- \$217/mbf

## SALES SOLD

- 2 sales
- 7 mmbf
- \$1.5 million
- \$228/mbf
- Avg Bids: 1



# FISCAL YEAR 2025 UPDATE

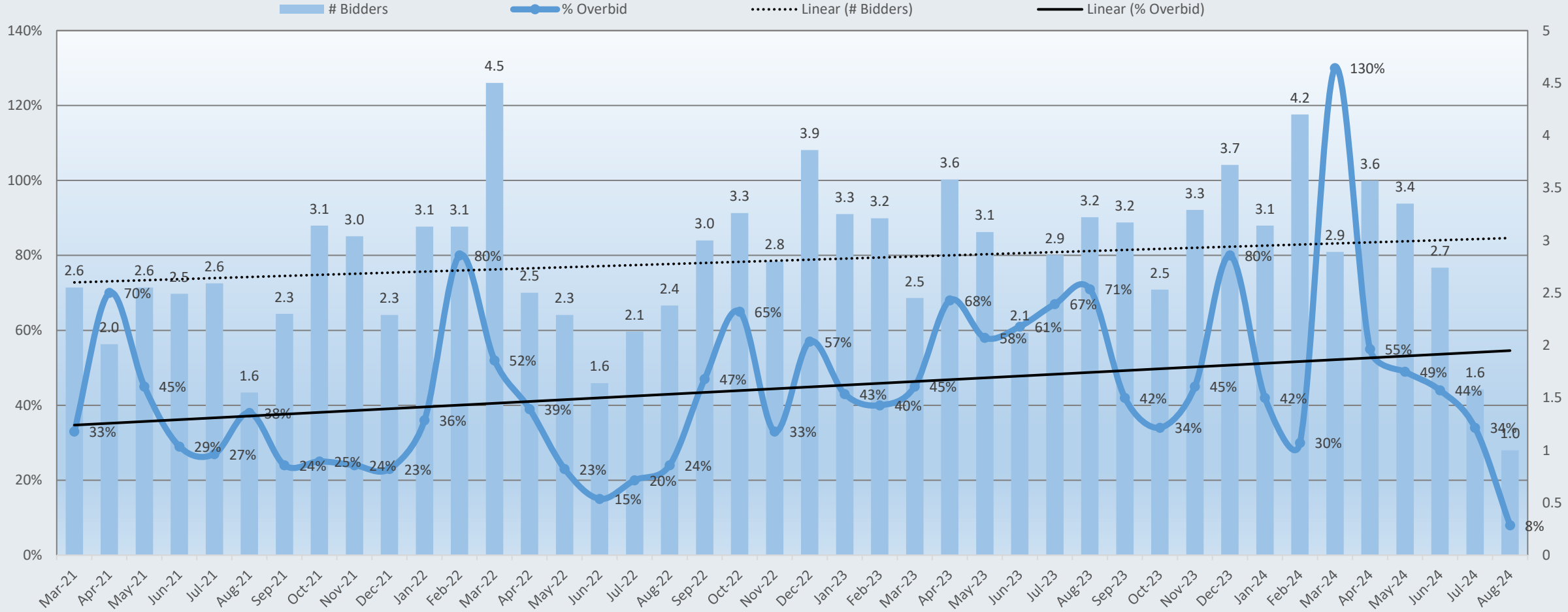


\*Original FY25 Plan volume based on internal tracking pulled 7/1/2024



# OVERBIDS

% Overbid and # Bidders for Board Sales  
May 2021 to present  
(Board sales only)



# CURRENT PROPOSED SALES

## Total Proposal

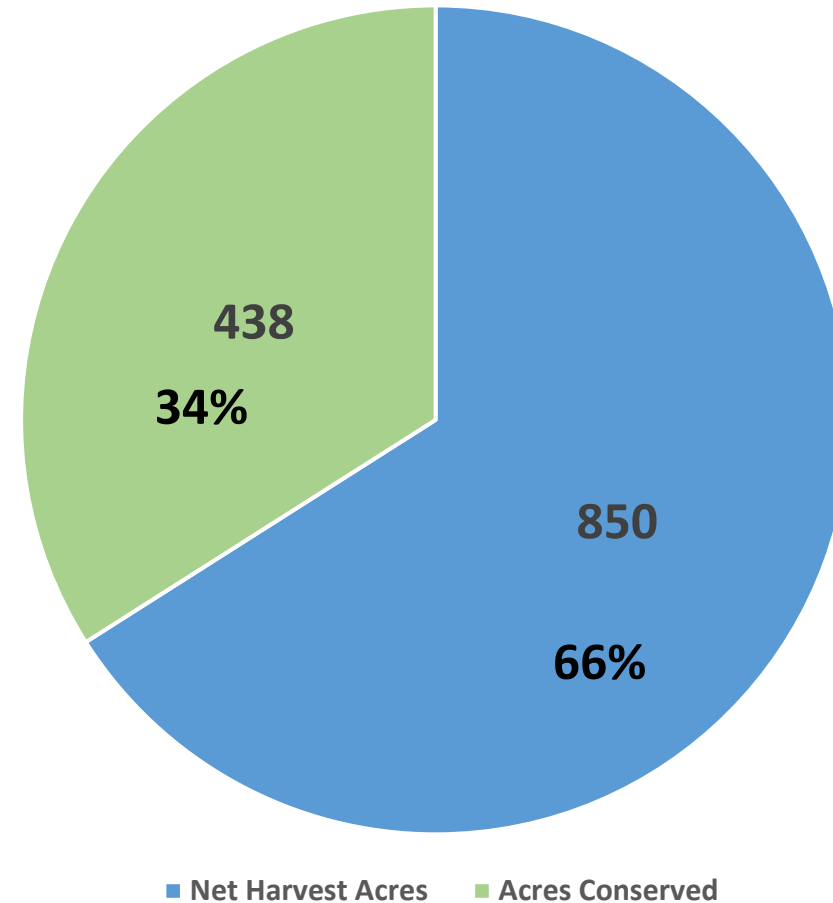
- 6 sales
- 28.7 mmbf
- \$7.0 million
- \$245/mbf





# CURRENT PROPOSED SALES

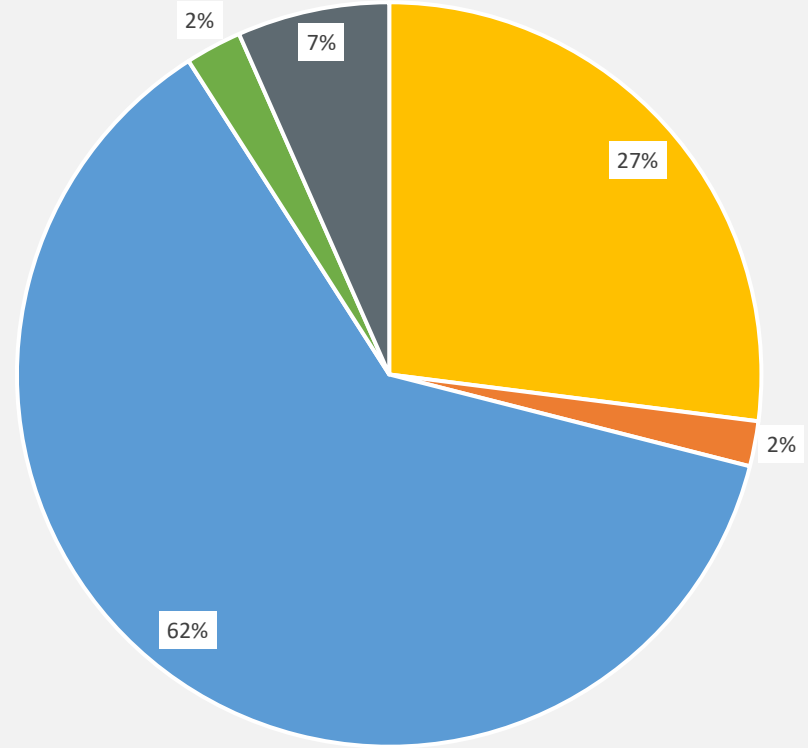
Westside Sale Proposal Acreages



# CURRENT PROPOSED SALES

## Appraised Revenue % by Trust

- 01=State Forest Board Transfer
- 02=State Forest Board Purchase
- 03=Common School & Indemnity
- 06=C.E.P. & R.I.
- 10=Scientific School



# Ellens Rock TIMBER SALE 30-104809

## Conservation Facts

Original planned area: 392 acres

Final harvest area: 244 acres

Conserved area: 148 acres

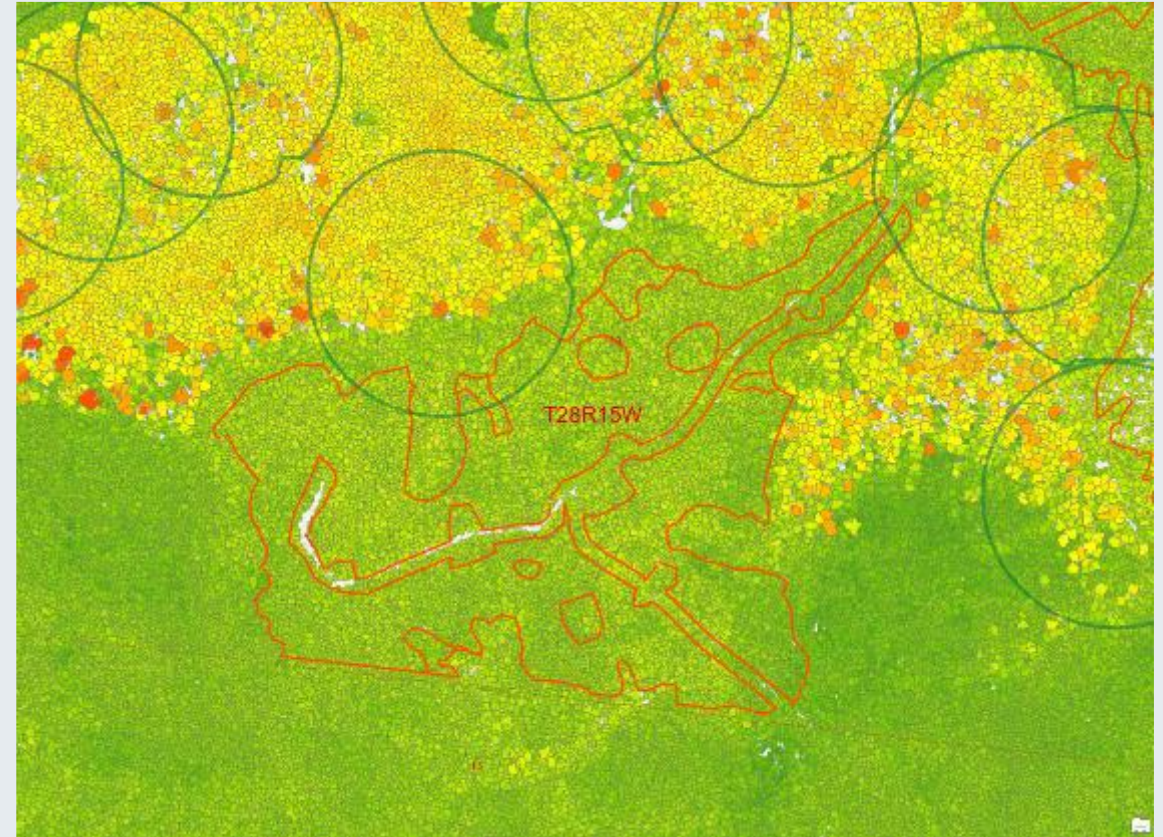
Percent contributed to Long-term  
forest cover: 38%

Appraised Stumpage: \$182/MBF





# Ellens Rock TIMBER SALE 30-104809





# Barred Entry TIMBER SALE 30-104801

## Conservation Facts

Original planned area: 376 acres

Final harvest area: 245 acres

Conserved area: 131 acres

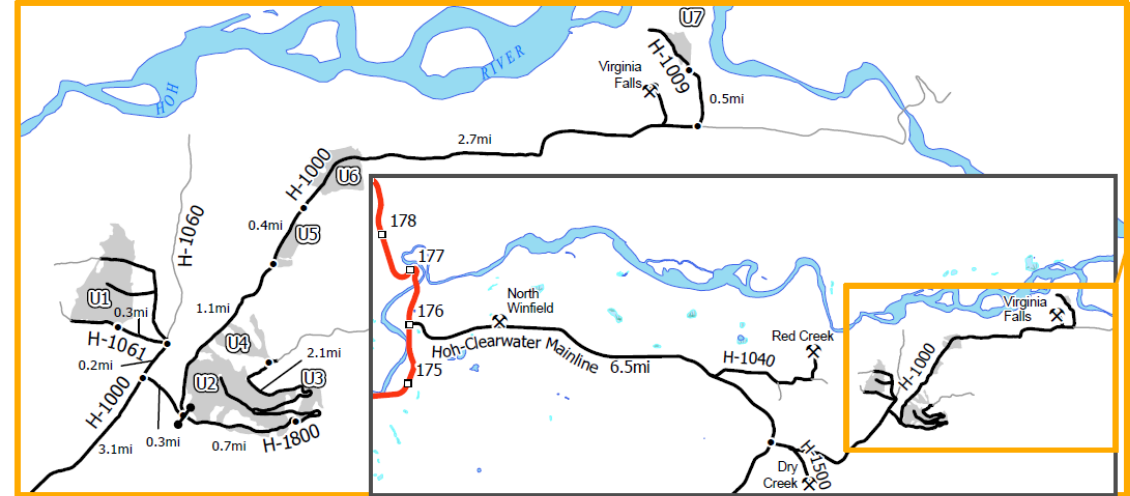
Percent contributed to Long-term forest cover: 35%

Appraised Stumpage:\$118/MBF

### DRIVING MAP

**SALE NAME:** BARRED ENTRY  
**AGREEMENT#:** 30-104801  
**TOWNSHIP(S):** T26R11W, T27R10W, T27R11W  
**TRUST(S):** Common School and Indemnity (3)

**REGION:** Olympic Region  
**COUNTY(S):** Jefferson  
**ELEVATION RGE:** 460-1620



Map may not be to scale

#### DRIVING DIRECTIONS:

- Unit 1:** Drive south on HWY 101 from Forks, WA for 15 miles. Turn left onto Hoh-Clearwater Mainline. Continue for 6.5 miles and turn left onto H-1000. Drive 3.1 miles, then keep left onto H-1060. Continue for 0.2 miles and take the first left onto H-1061. Drive 0.3 miles.
- Unit 2:** From H-1060 JCT, continue east on H-1000 for 0.3 miles. Keep right onto H-1800 and arrive.
- Unit 3:** From Unit 2, continue on H-1800 for 0.7 miles.
- Unit 4:** From Unit 3, continue on H-1800 for 2.1 miles.
- Unit 5:** From H-1800 JCT, continue on H-1000 for 1.1 miles.
- Unit 6:** From Unit 5, continue on H-1000 for 0.4 miles.
- Unit 7:** From Unit 6, continue on H-1000 for 2.7 miles and turn left onto H-1009. Continue for 0.5 miles.
- North Winfield Pit:** Turn left at MP1.5 Hoh-Clearwater Mainline
- Red Creed Quarry:** Turn left at MP4.5 Hoh-Clearwater Mainline. Drive 1 mile, and continue straight onto H-1043. Drive 0.6 miles and turn left onto H-1044. Drive 0.5 miles.
- Dry Creek Pit:** Drive 0.5 miles on H-1500 from JCT H-1000.
- Virginia Falls Pit:** From Unit 6, continue on H-1000 for 1.8 miles. Turn left on Virginia Falls Pit road. Drive 0.5 miles.

Prepared By: dnl490

Modification Date: dnl490 4/4/2024





# Broke TIMBER SALE 30-105211

## Conservation Facts

Original planned area: 281 acres

Final harvest area: 190 acres

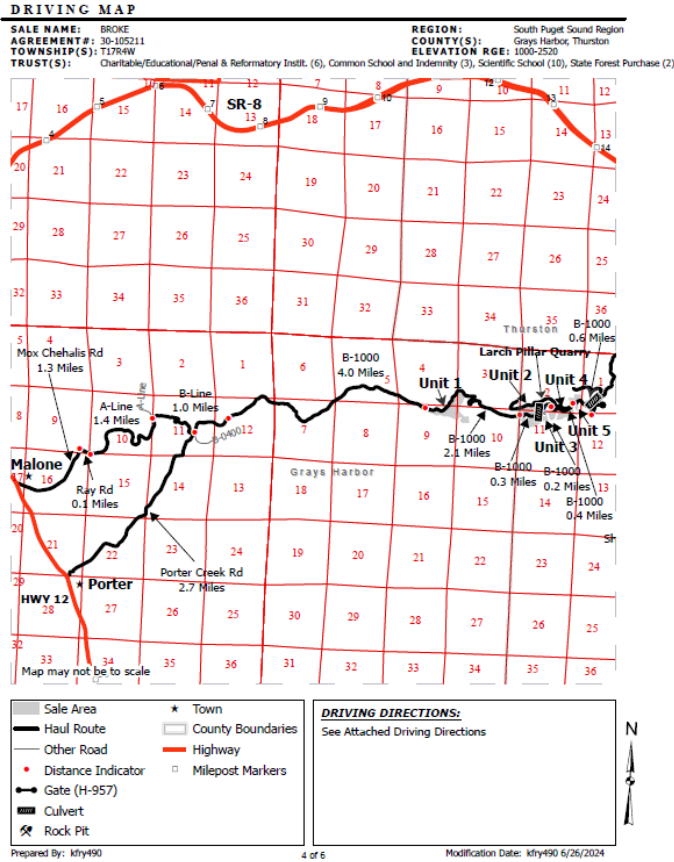
Conserved area: 86 acres

Percent contributed to Long-term  
forest cover: 31%

Appraised Stumpage: \$355/MBF



# Broke TIMBER SALE 30-105211



DRAFT

DRAFT

DRAFT

**Schedule A  
Recreation Trail Clean Out and Repair**

This schedule applies to portions of Larch Trail West in Unit #1, portions of Larch Trail East in Unit #2 and portions of Twin Peaks in Unit #5.

Purchaser is responsible for closing trails with orange construction barricade netting and posting trail closure signs provided by purchaser and approved by Contract Administrator (CA), at designated locations provided by the CA. Purchaser is responsible for giving five (5) calendar days notice before closing the trail.

Purchaser is responsible for locating and marking the recreation trail within the sale boundary on the ground prior to harvest as approved by the CA.

- If needed upon completion of harvest activities, Purchaser shall locate the original recreation trail with pink fluorescent flagging. The CA will then approve the trail location in writing and repair/clean out can begin.

Recreation trail repair/clean out shall occur within 2 weeks of completion of harvest activity within 200 feet of the trail and shall consist of the following:

- Remove all logging debris from the recreation trail and the area on each side of the trail within 5 feet of the travel path.
- Trail will be repaired where holes or ruts resulted due to logging damage. The trail will be returned to its original width on mineral soils and free of organic debris.
- Existing drainage control measures shall be returned to pre-harvest condition.
- Any Geoweb structures damaged during the logging operation will be replaced or repaired to pre-harvest condition.

All work described above shall be done as determined by the CA. The logging release for the unit will not be issued until repair and clean out is completed and approved in writing by the CA.

7/29/2024

28 of 28

Agreement No. 30-105211





# Action Item **TIMBER** **SALE 30-105538**

## **Conservation Facts**

Original planned area: 170 acres

Final harvest area: 102 acres

Conserved area: 68 acres

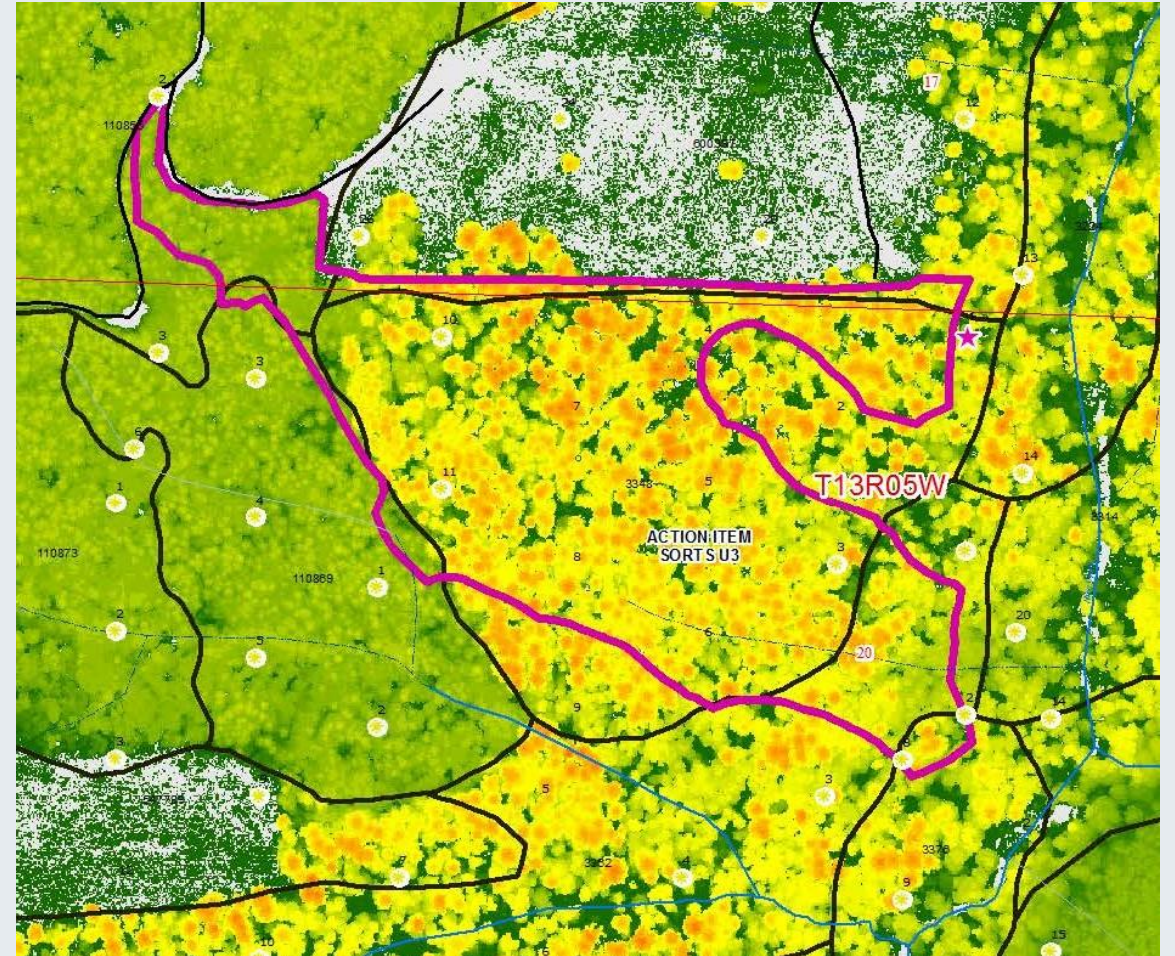
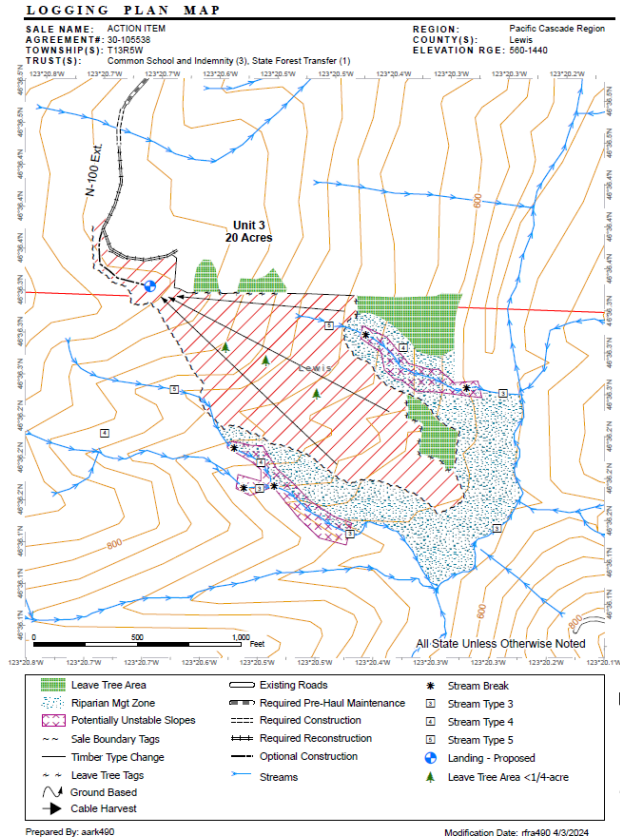
Percent contributed to Long-term  
forest cover: 40%

Appraised Stumpage: \$290/MBF





# Action Item TIMBER SALE 30-105538





# Stern Look TIMBER SALE 30-106072

## Conservation Facts

Original planned area: 74 acres

Final harvest area: 69 acres

Conserved area: 5 acres

Percent contributed to Long-term forest cover: 7%

Appraised Stumpage: \$434/MBF





# QUESTIONS?

**Staff recommend all sales be approved for auction**



