



TRUST LAND TRANSFER PRIORITY RANKINGS FY 2025-27

Presentation to the
Board of Natural
Resources

September 4, 2024



TRUST LAND TRANSFER PROGRAM HISTORY

A Special Program for Special Places

- Trust Land Transfer Program is designed to replace economically underperforming DNR-managed lands that provide other public benefits
- Program has conserved more than 125,000 acres since its creation, primarily within State Parks, local parks, and DNR Natural Areas
- Legislature began funding appropriations in 1989, codified program in 2023 session



TRUST LAND TRANSFER PROCESS

Application Guidelines and Timelines

- Applications were accepted until September 2023
- Proposals evaluated to determine whether they met statutory requirements and are in best interests of trusts
- Applications require approval from receiving agency to demonstrate capability to manage parcels in future
- Applications were then presented to 12-member volunteer Trust Land Transfer Advisory Committee



TRUST LAND TRANSFER ADVISORY COMMITTEE

Prioritization of Applications for FY 2025-27

- **Committee met this summer to evaluate applications using criteria approved by Board of Natural Resources during July meeting**
- **Proposals are ranked on priority basis based on ecological values, tribal support, public benefit, community support, and economic values**
- **The following ranked list, if approved, will be submitted as a decision package to the Legislature for next session**



SCORING CRITERIA FOR TRUST LAND TRANSFERS

Prioritization criteria let committee members compare unique applications and prioritize them for possible funding

Proposals are ranked on a 0-to-5 scale, and criteria are weighted with multipliers to reach a final score to generate a ranked list to provide to the Board of Natural Resources.

Each committee member scored the applications on his or her own and submitted the scorings to DNR to compile.

- **Ecological Values:** 3x multiplier
- **Tribal Support:** 3x multiplier
- **Public Benefits:** 3x multiplier
- **Community Support:** 2x multiplier
- **Economic Values:** 1x multiplier

TRUST LAND TRANSFER PRIORITY RANKINGS FY 2025-27 Statewide locations



TRUST LAND TRANSFER PRIORITY RANKINGS FY 2025-27

1. Beckler 6 676 Acres, King County

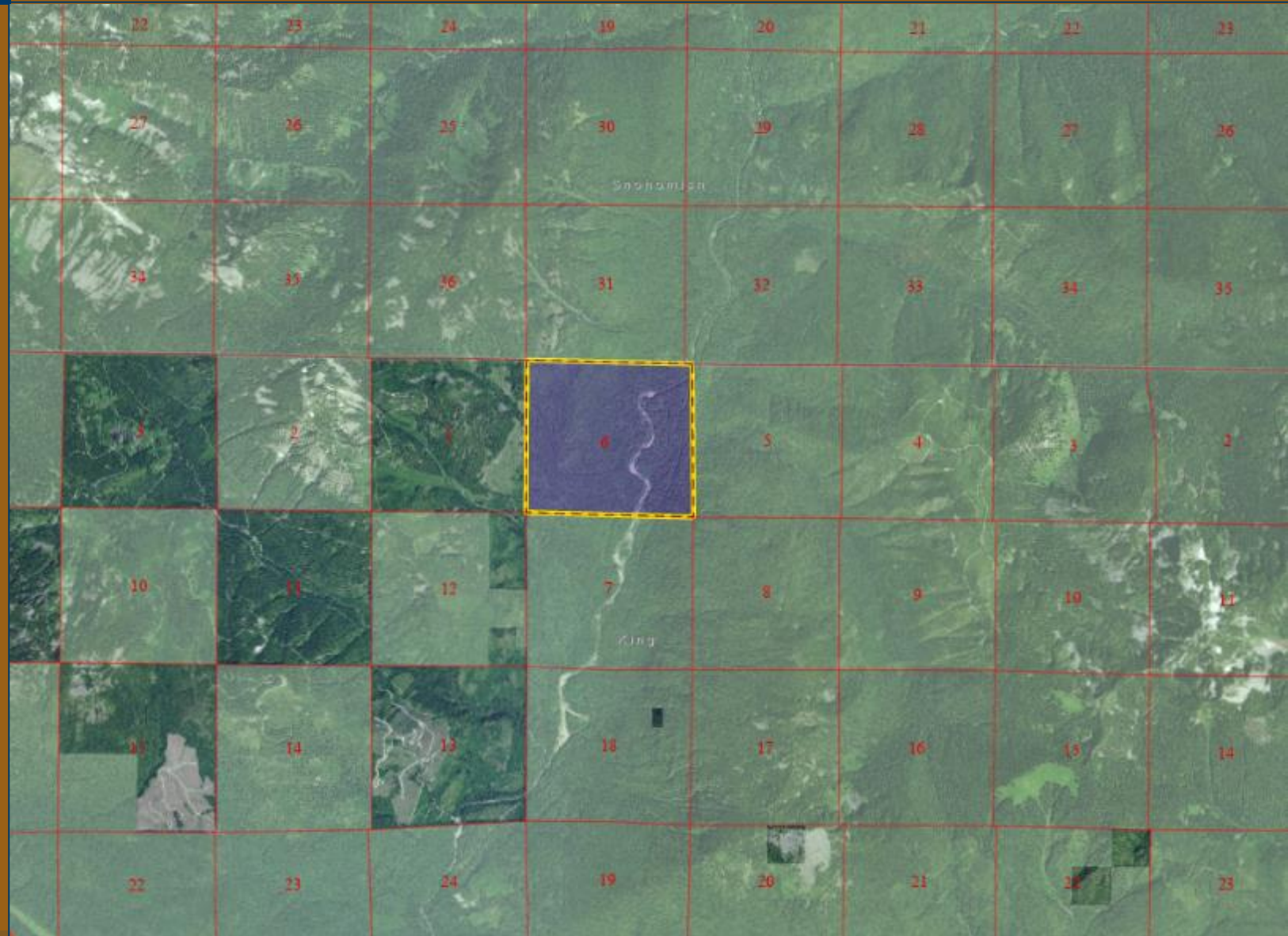
- **Applicant: Alpine Lakes Protection Society**
- **Recipient: Tulalip Tribes**
- **Trust Breakdown:
Scientific School Trust, 676 acres**
- **Estimated value: \$4 million**



TRUST LAND TRANSFER PRIORITY RANKINGS FY 2025-27

**1. Beckler 6,
676 Acres,
King County**

**4 miles northeast
of Skykomish**



TRUST LAND TRANSFER PRIORITY RANKINGS FY 2025-27

2. Okanogan G, 42 Acres, Okanogan County

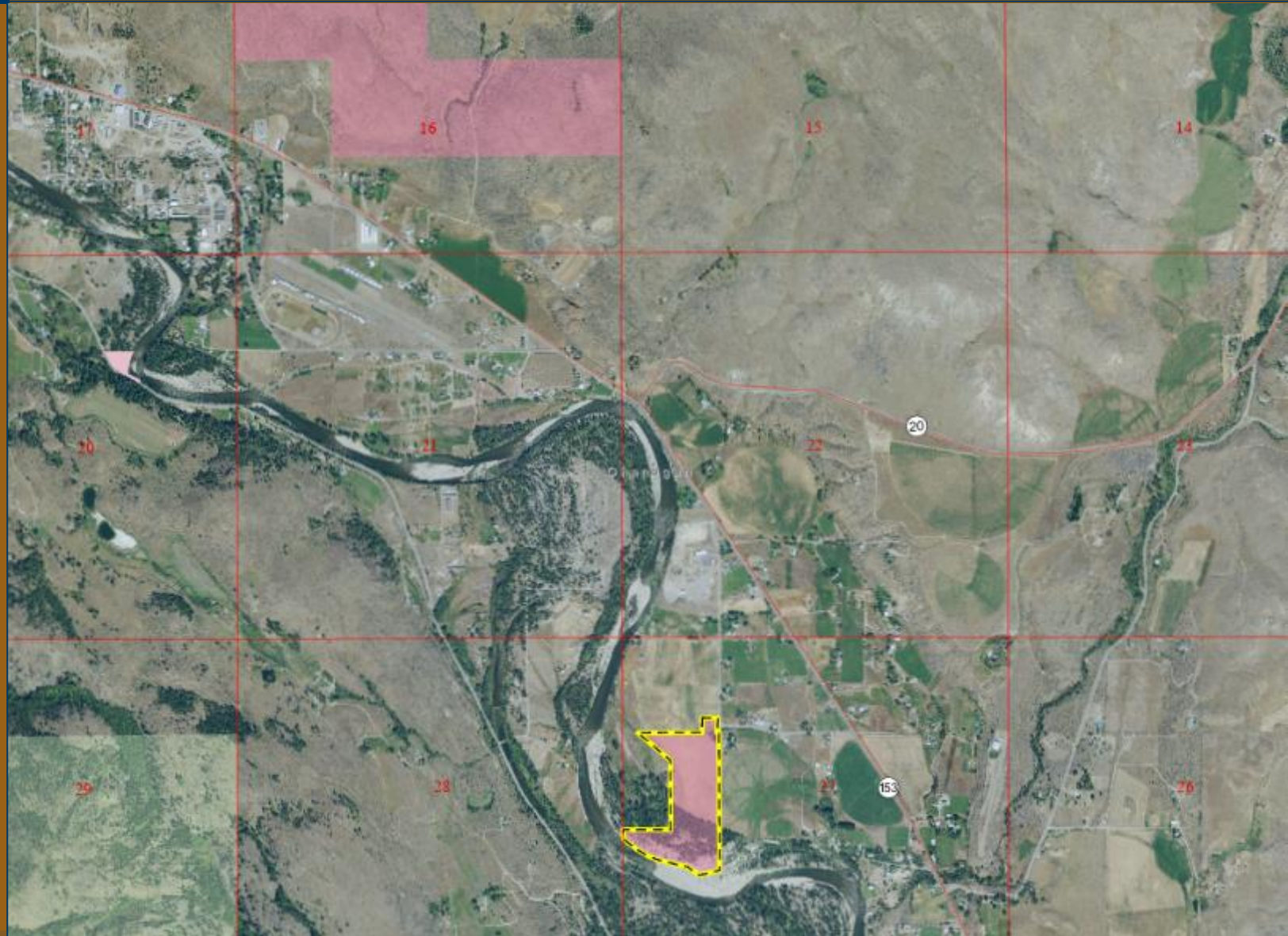
- **Applicant: Confederated Tribes of the Colville Reservation**
- **Trust Breakdown:
Common School Trust, 42 acres**
- **Estimated value: \$450,000**



**TRUST LAND
TRANSFER
PRIORITY
RANKINGS
FY 2025-27**

**2. Okanogan G,
42 Acres,
Okanogan County**

**1 mile south
of Twisp**



TRUST LAND TRANSFER PRIORITY RANKINGS FY 2025-27

3. Tract C East, 2,965 Acres, Yakima County

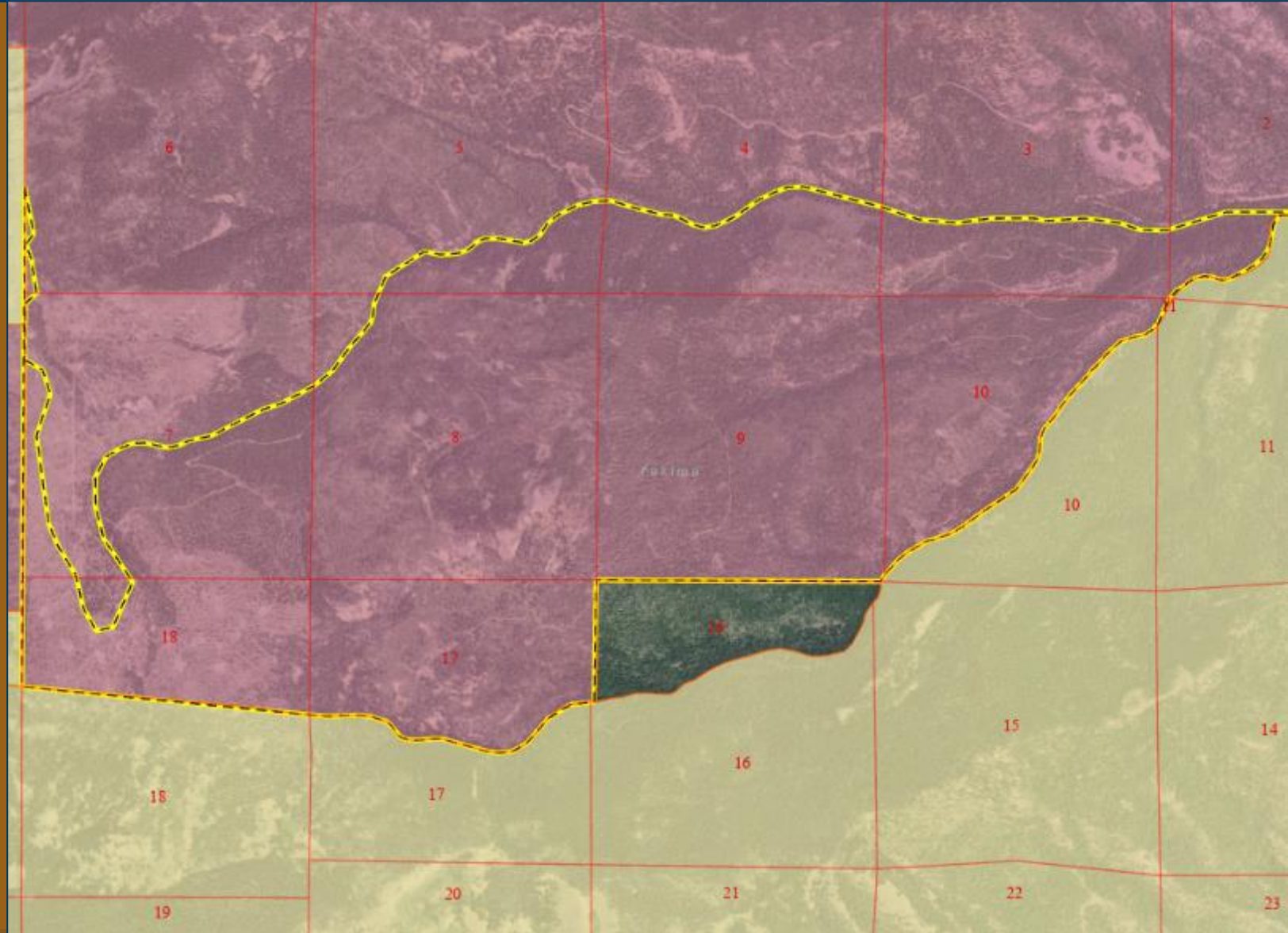
- **Applicant: Confederated Tribes and Bands of the Yakama Nation**
- **Trust Breakdown:
Common School Trust, 2,965 acres**
- **Estimated value: \$4.4 million**



TRUST LAND TRANSFER PRIORITY RANKINGS FY 2025-27

**3. Tract C East,
2,965 Acres,
Yakima County**

**23 miles southwest
of Yakima**



TRUST LAND TRANSFER PRIORITY RANKINGS FY 2025-27

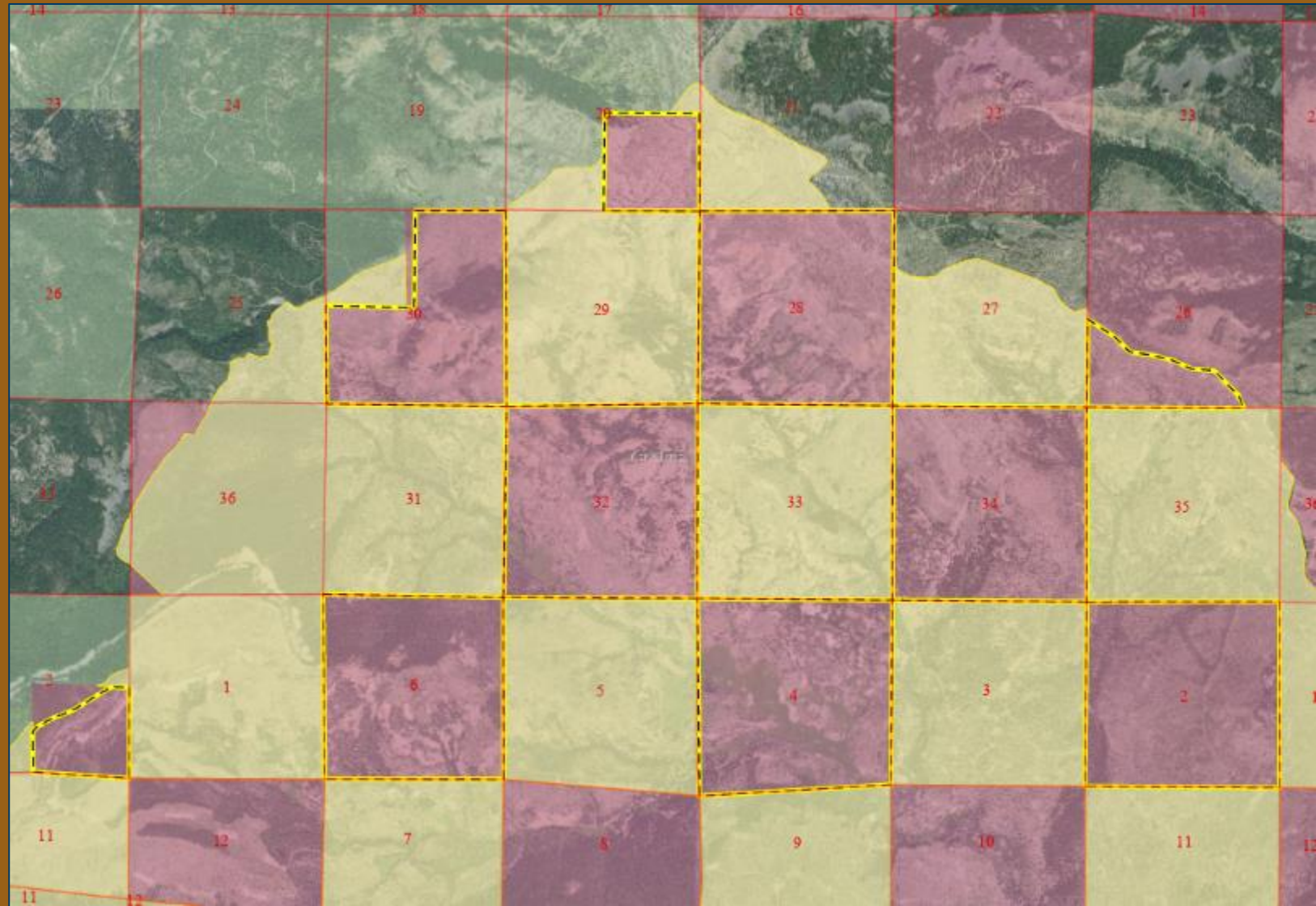
4. Tract C North, 4,566 Acres, Yakima County

- **Applicant: Confederated Tribes and Bands of the Yakama Nation**
- **Trust Breakdown:
Common School Trust, 4,566 acres**
- **Estimated value: \$6.8 million**



TRUST LAND TRANSFER PRIORITY RANKINGS FY 2025-27

**4. Tract C North,
4,566 Acres,
Yakima County
23 miles west
of Yakima**



TRUST LAND TRANSFER PRIORITY RANKINGS FY 2025-27

5. Tract C South, 2,405 Acres, Yakima County

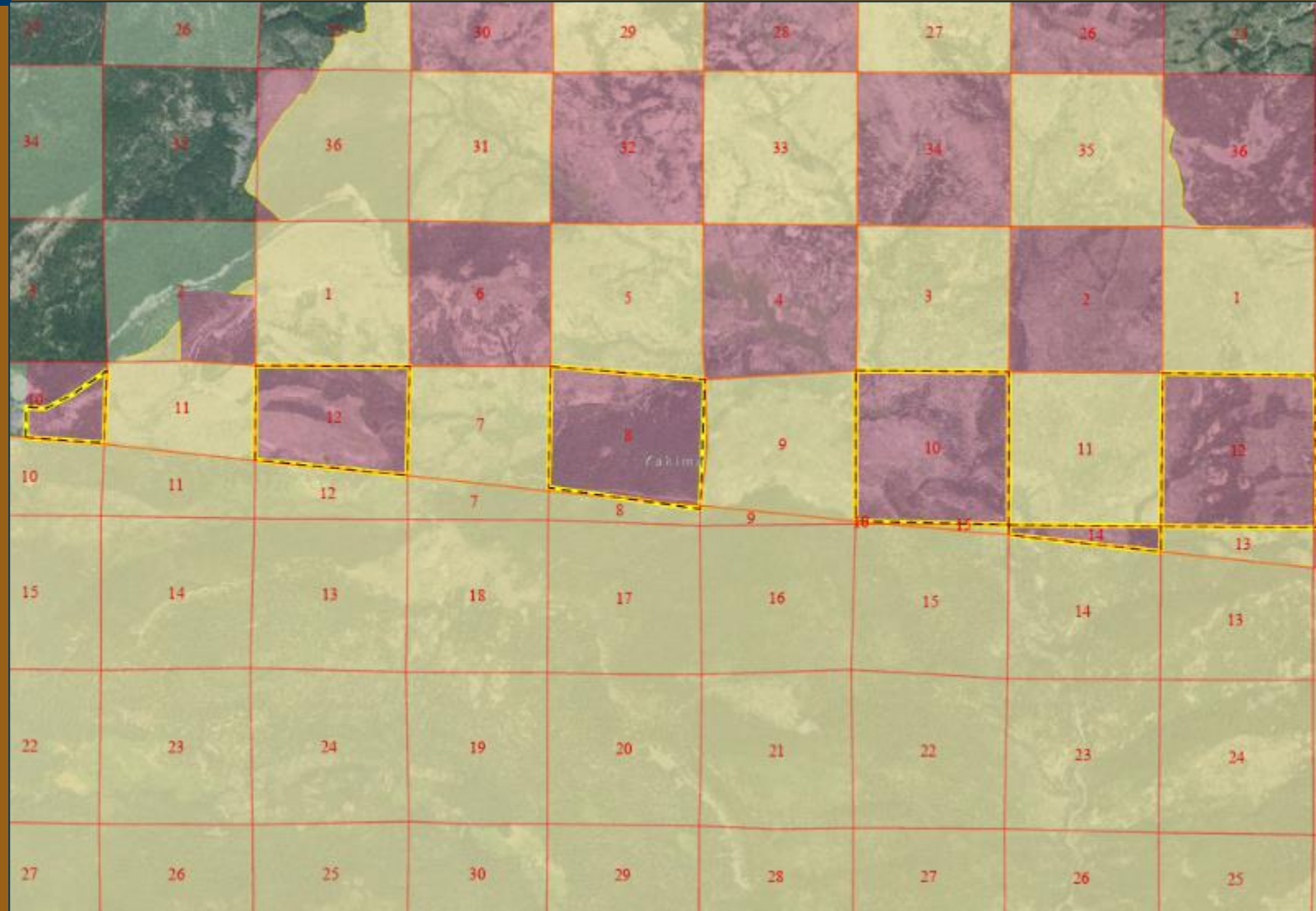
- **Applicant: Confederated Tribes and Bands of the Yakama Nation**
- **Trust Breakdown:
Common School Trust, 2,405 acres**
- **Estimated value: \$3.7 million**



TRUST LAND TRANSFER PRIORITY RANKINGS FY 2025-27

**5. Tract C South,
2,405 Acres,
Yakima County**

**23 miles southwest
of Yakima**



TRUST LAND TRANSFER PRIORITY RANKINGS FY 2025-27

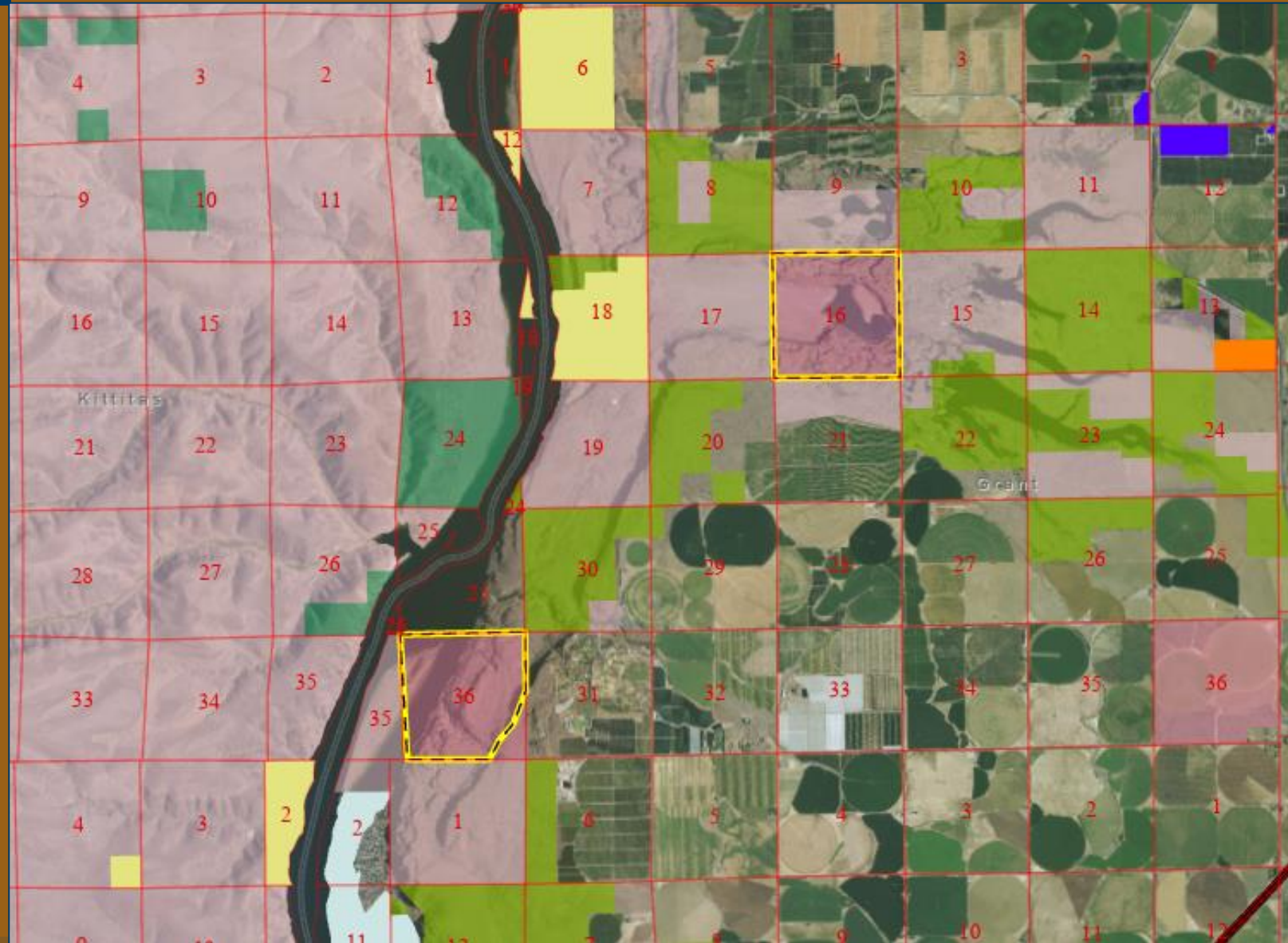
6. Babcock Bench, 1,071 Acres, Grant County

- Applicant: Washington Department of Fish and Wildlife
- Trust Breakdown:
Common School Trust, 1,071 acres
- Estimated value: \$850,000



TRUST LAND TRANSFER PRIORITY RANKINGS FY 2025-27

**6. Babcock Bench,
1,071 Acres,
Grant County
6 miles southeast
of Quincy**



TRUST LAND TRANSFER PRIORITY RANKINGS FY 2025-27

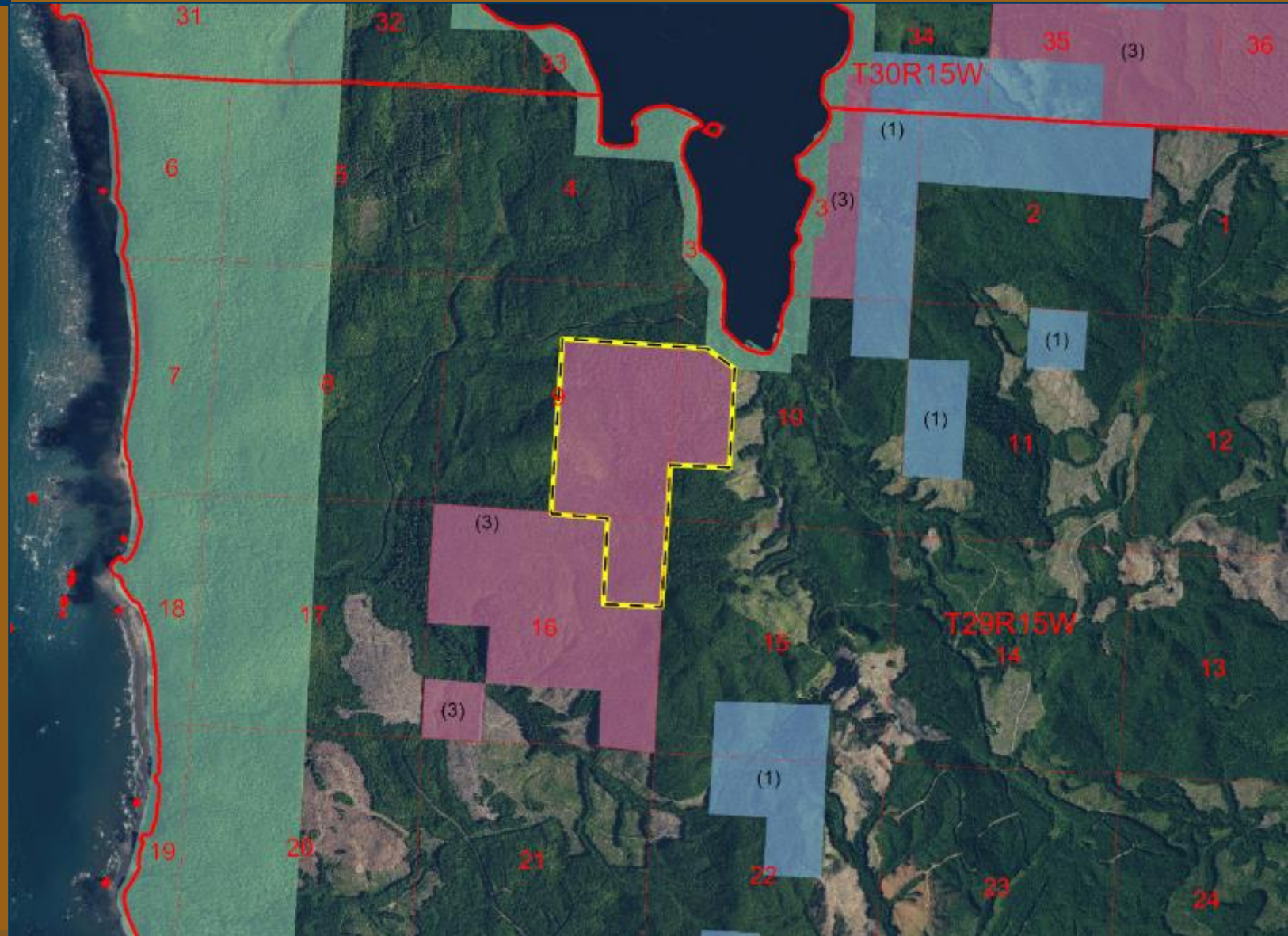
7. South Lake Ozette, 372 Acres, Clallam County

- **Applicant: Quileute Tribe**
- **Trust Breakdown:
Common School Trust, 372 acres**
- **Estimated value: \$8.9 million**



TRUST LAND TRANSFER PRIORITY RANKINGS FY 2025-27

**7. South Lake Ozette,
372 Acres,
Clallam County
12 miles northwest
of Forks**



TRUST LAND TRANSFER PRIORITY RANKINGS FY 2025-27

8. Middle Fork Snoqualmie, 95 Acres, King County

- Applicant: DNR Natural Areas Program
- Trust Breakdown:
King County Water Pollution Control Division Trust, 61 acres
State Forest Transfer Trust, 34 acres
- Estimated value: \$900,000

**TRUST LAND
TRANSFER
PRIORITY
RANKINGS
FY 2025-27**

**8. Middle Fork
Snoqualmie,
95 Acres,
King County
2 miles southeast
of North Bend**



TRUST LAND TRANSFER PRIORITY RANKINGS FY 2025-27

Weighted Ranked List of Applications

*Withdrawn upon request of applicant

Proposal	Total Points	Weighted	Proposal	Total Points	Weighted
Tulalip Tribes - Beckler 6	609	50.75	WDFW - Balky Hill	524	43.67
Confederated Colville Tribes - Okanogan G	589	49.08	Key Pen Parks - Horseshoe Lake	521	43.42
Yakama Nation - Tract C East	589	49.08	City of Spokane - Thorpe	517	43.08
DNR - Mima Mounds*	585	48.75	King County - Carey Creek	504	42.00
Yakama Nation - Tract C North	582	48.50	Jefferson County - Jacob Miller	460	41.82
Yakama Nation - Tract C South	574	47.83	DNR - Naselle Highlands	498	41.50
WDFW - Babcock Bench	570	47.50	DNR - Skamokawa Creek	498	41.50
Quileute - South Lake Ozette	513	46.64	WDFW - Johns River	494	41.17
DNR - Middle Fork Snoqualmie	551	45.92	DNR - Stavis Creek	479	39.92
DNR - Morning Star	539	44.93	City of Sammamish - Providence Heights	475	39.58
Jefferson County - Cape George	492	44.73	Spokane County - Fancher	474	39.50
Jefferson County - Anderson Lake	491	44.64	WDFW - Rustlers Gulch	458	38.17
DNR - Trout Lake	529	44.08	DNR - Stevenson Ridge	452	37.67
Jefferson County - Beaver Valley	482	43.82	DNR - Spring Creek Canyon	438	36.50
King County - Issaquah Creek	524	43.67	Skamania County - Blue Lake	380	31.67



TRUST LAND TRANSFER PRIORITY RANKINGS FY 2025-27 Request for Approval of Ranked List

The Department requests that the Board of Natural Resources approve Resolution No. 1640 to adopt the ranked list of applications to submit to the Legislature for funding in the FY 2025-27 Biennium



