



Bellingham 40s

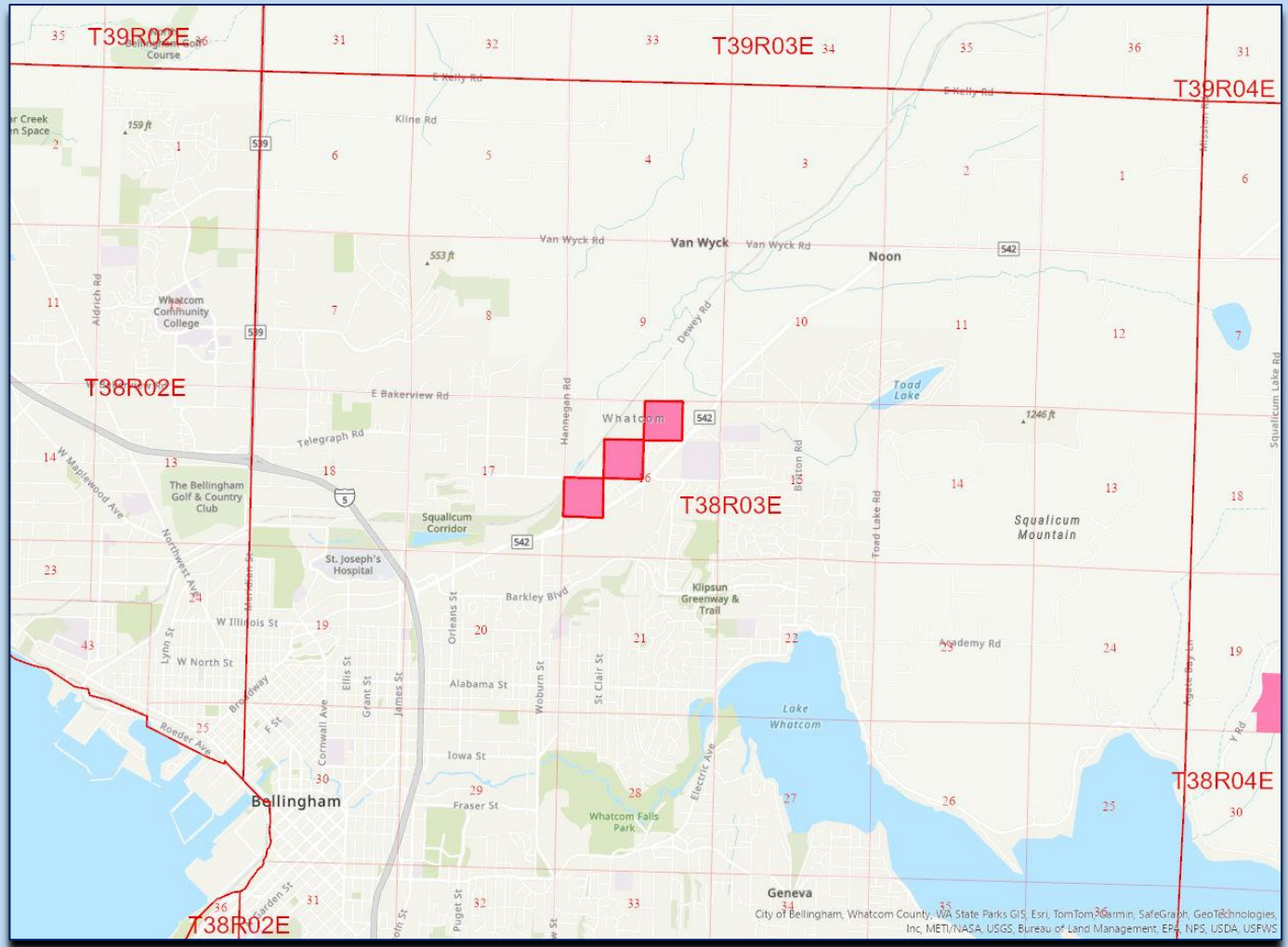
Proposed Direct Transfer City of Bellingham



Bellingham 40s

Location

- 2 miles east of Interstate 5 in Bellingham
- Within the city limits of Bellingham
- NW of Lake Whatcom



Bellingham 40s

Property



- 116.67 +/- acres
Common School Trust
- Proposed transfer to City of Bellingham
- Squalicum Creek Corridor

Bellingham 40s

Overview

Photos by Martin McElliott



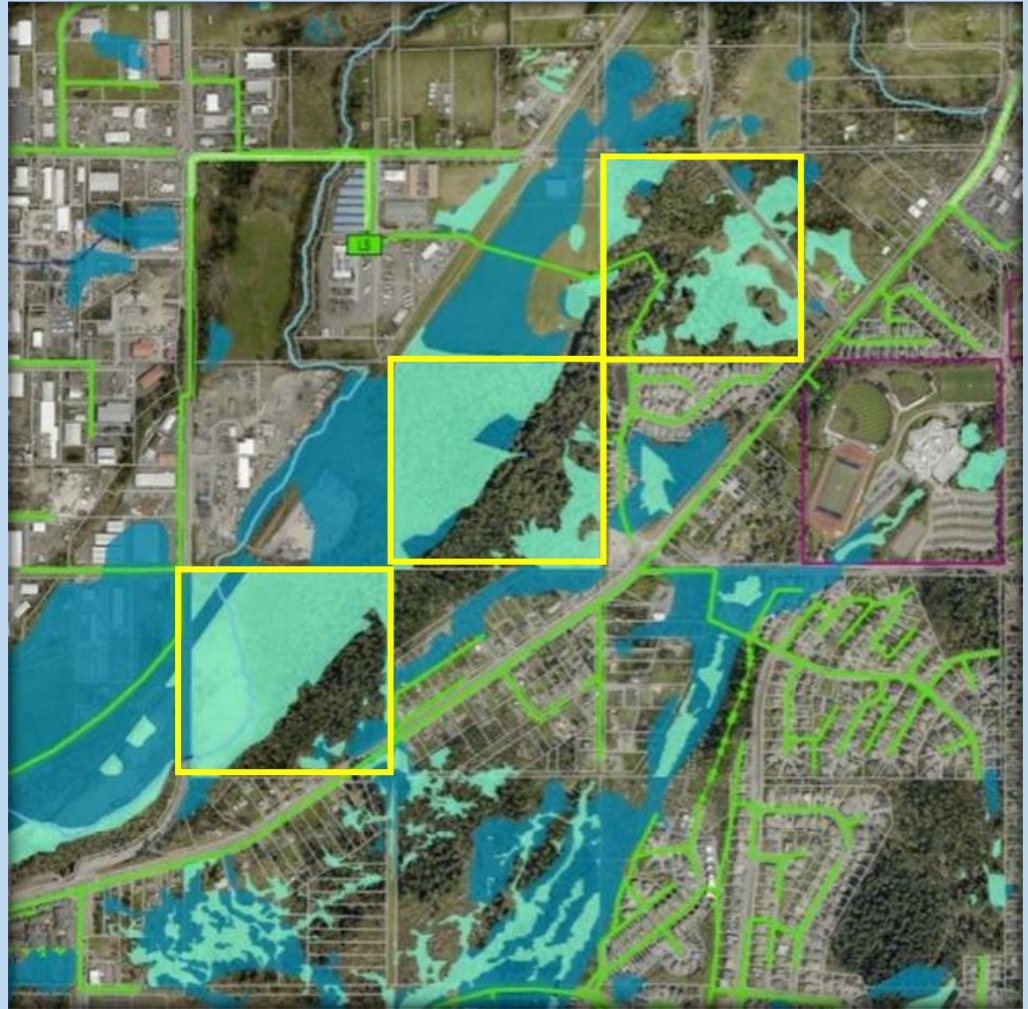
- Wetlands
- Gas pipeline
- Railroad
- Slopes
- Sewer line
- Homeless encampment
- Dumping



Bellingham 40s

City Wetlands and Sewer

- Dark Blue Wetlands
- Blue Green Wetland buffer
- Green Sewer lines



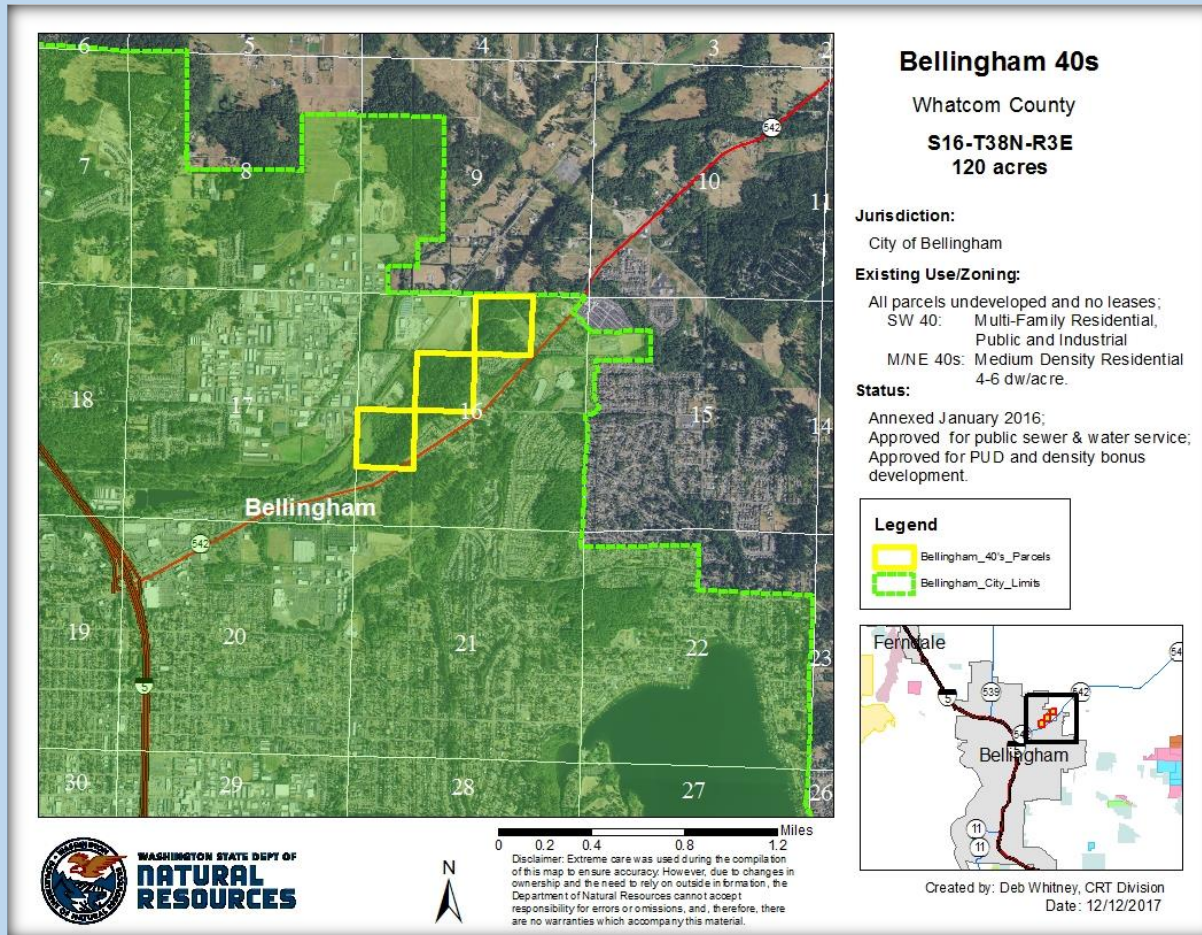
Bellingham 40s

Benefits



- Provides land to the City for park and open space use.
- Facilitates repositioning a trust asset to lands better suited for long-term revenue production.
- Divests of a property that is encumbered.
- Proceeds will be used to purchase replacement land for the Common School Trust.

Bellingham 40s Valuation



Total \$2,190,000

Bellingham 40s

Resolution 1638

Questions?



