



Carbon and Forest Management Work Group Models and Process



December 11, 2024 | 9 am – 3 pm

Meeting #10

Differences Between Forest Estate and Carbon Model



The Forest Estate Model

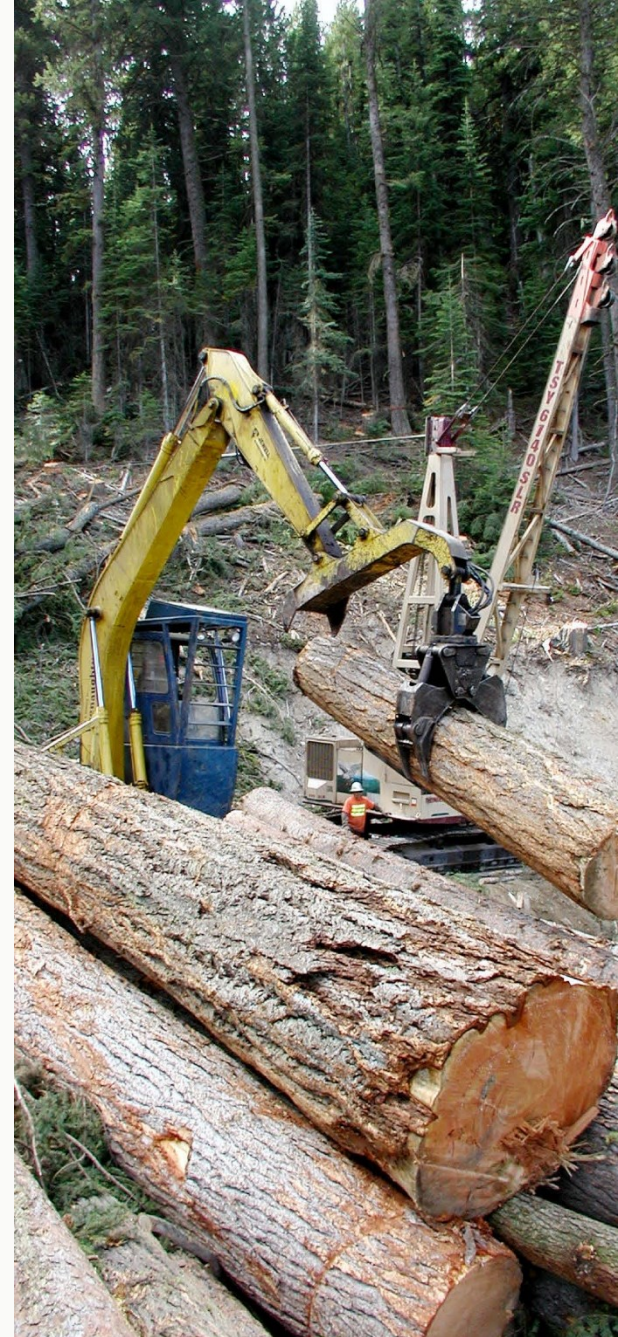
Purpose: To determine the decadal sustainable harvest level, which is the volume of timber to be scheduled for sale during a planning decade according to applicable laws, policies, and procedures.

Individual levels are set for each sustainable harvest unit in the planning area.



The Forest Estate Model

- Designed to capture the full complexity of DNR management under current policies and laws. Complexity is necessary to determine the harvest levels.
- DNR regions plan timber sales during the decade to meet the harvest level for their sustainable harvest unit.



The Carbon Model (FVS)

- **Purpose:** To quantify carbon resulting from potential management changes.
- FVS is consistent with the highest methodological complexity (Tier 3) recommended by the IPCC* guidelines for national greenhouse gas inventories, as required by the budget proviso.

*Intergovernmental Panel on Climate Change



The Carbon Model (FVS)

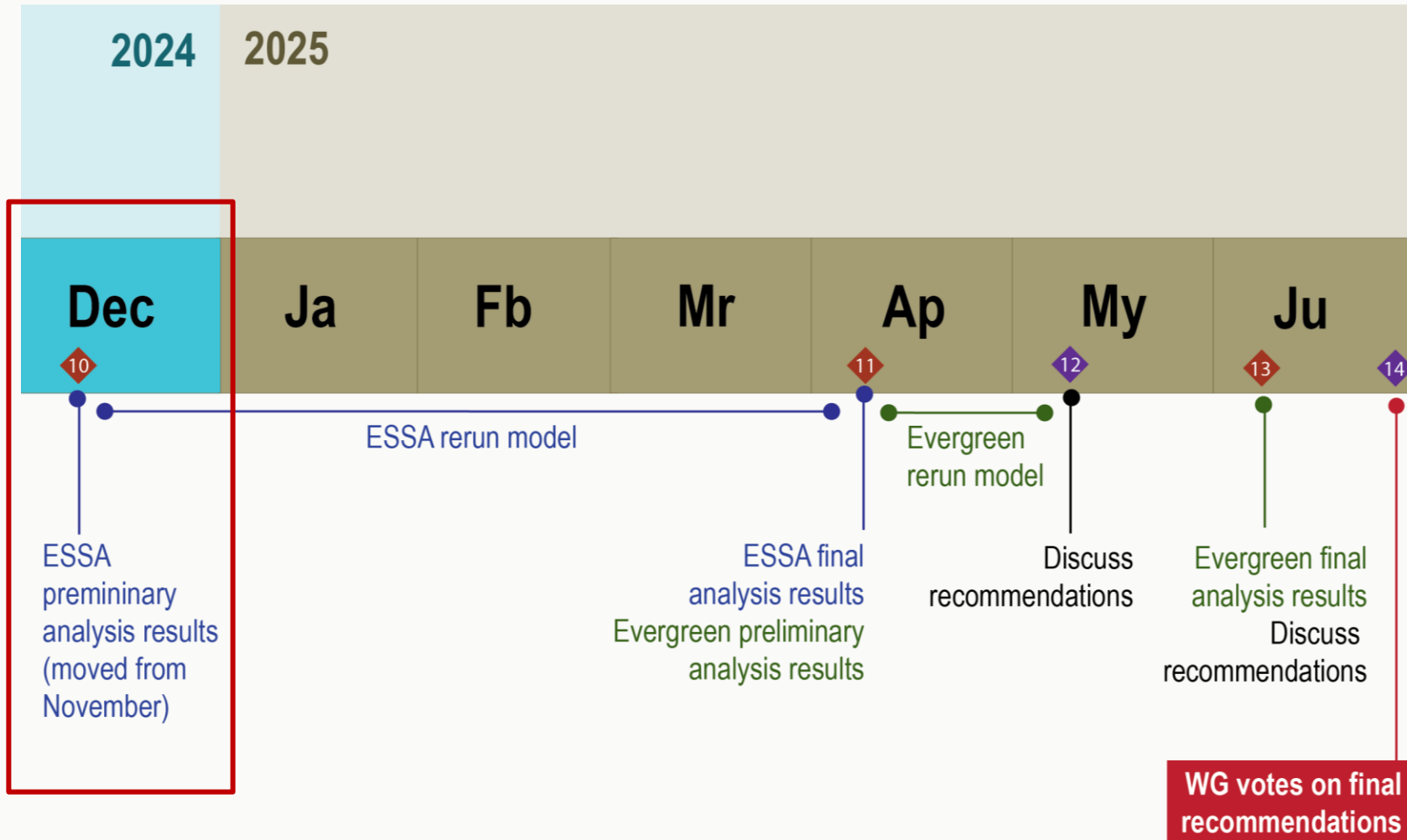
- Model serves a different purpose than the forest estate model and does not need to capture the same level of management complexity.
- Results should be used to understand **trends over time** and **differences between the scenarios**.



Process Review



Where are we in the Process?



Purpose of Preliminary Results

- The **preliminary** results we will see today provide an opportunity to better understand the model and the scenarios, and to suggest potential modifications to the model and/or scenarios.
- The **final** results will inform the recommendations.



Handoff: Harvest Volume

- After today's meeting, ESSA will provide preliminary harvest volumes to Evergreen to use as constraints on the economic models.
- This step will help align the carbon and economic models.



Handoff: Scenarios

- For continuity, Evergreen will analyze the scenarios without the changes discussed today. Some exceptions may arise during today's discussions.
- Once ESSA has generated final results next spring, they will provide updated harvest volumes to Evergreen.
- Evergreen will generate final results using the updated harvest volumes and any scenario refinements from this group.



Management Recommendations

- We will begin brainstorming recommendations in the May work group meeting and the work group will vote on them in the final meeting in late June.
- This group's recommendations will be summarized in a legislative report next December and later presented to the Board of Natural Resources.
- The Board will provide DNR feedback and direction on next steps.

