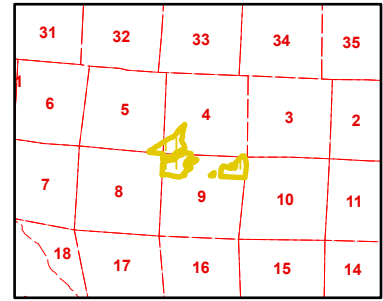
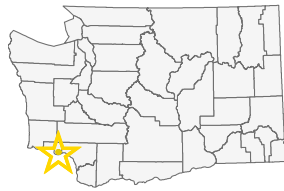
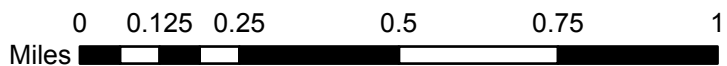
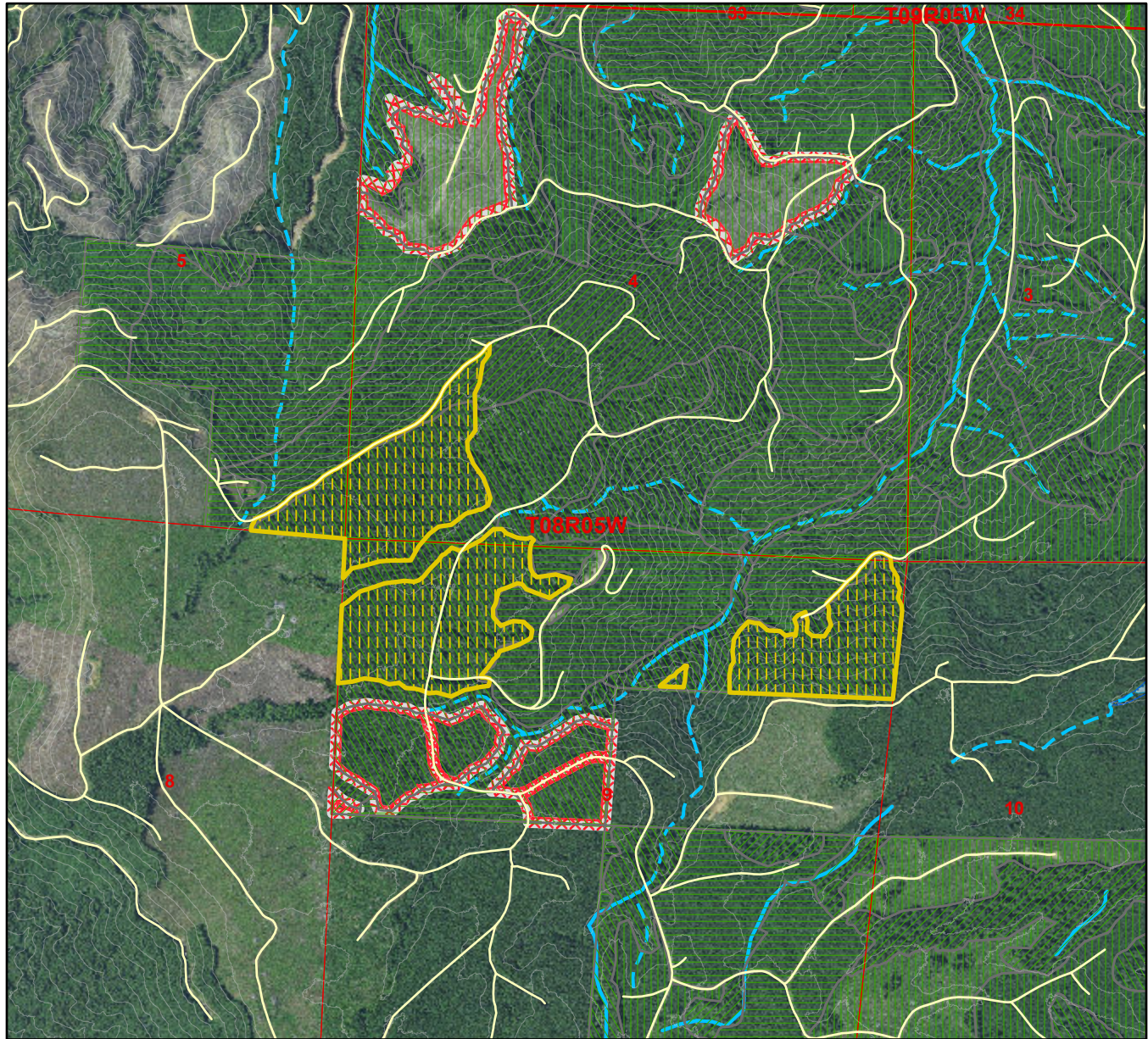


Harvest Unit Adjacency Map

Sale Name: SUPER TRUCKIN SORTS
 Sale District: STELLA
 Sale Date: March, 2025
 Sale Unit(s): All (3) Units
 Sale Location: T08R05W 4, 5, 9



This color map is produced by the Washington Department of Natural Resources (DNR), for discussion purposes only. If the copy you have is black and white, some of the information may not read correctly. Wetland locations are from the National Wetland Inventory (NWI) database. They are incomplete and may need field verification. The source data for this map is stored on the DNR's Geographic Information System. Although the DNR makes every reasonable effort to keep such data current, it cannot and does not accept liability for any errors or omissions. No warranty accompanies this material. Refer to the SEPA Checklist for additional detail.



- | | | | |
|-------------------|----------------|--------------------|---------------------|
| 0 - 25 Years old | Open Water | Type 4 Streams | Sold Sales |
| 26 - 50 Years old | Wetlands (NWI) | 303D Listed Water | Even-Aged |
| 51 - 75 Years old | Type 1 Streams | DNR-Managed Land | SUPER TRUCKIN SORTS |
| 76+ Years old | Type 2 Streams | DNR NAP's & NRCA's | |
| Other/Unknown | Type 3 Streams | Timber Sale | |

*Sold Sales represent data from last 7 years only

Map created on: 11/15/2024