

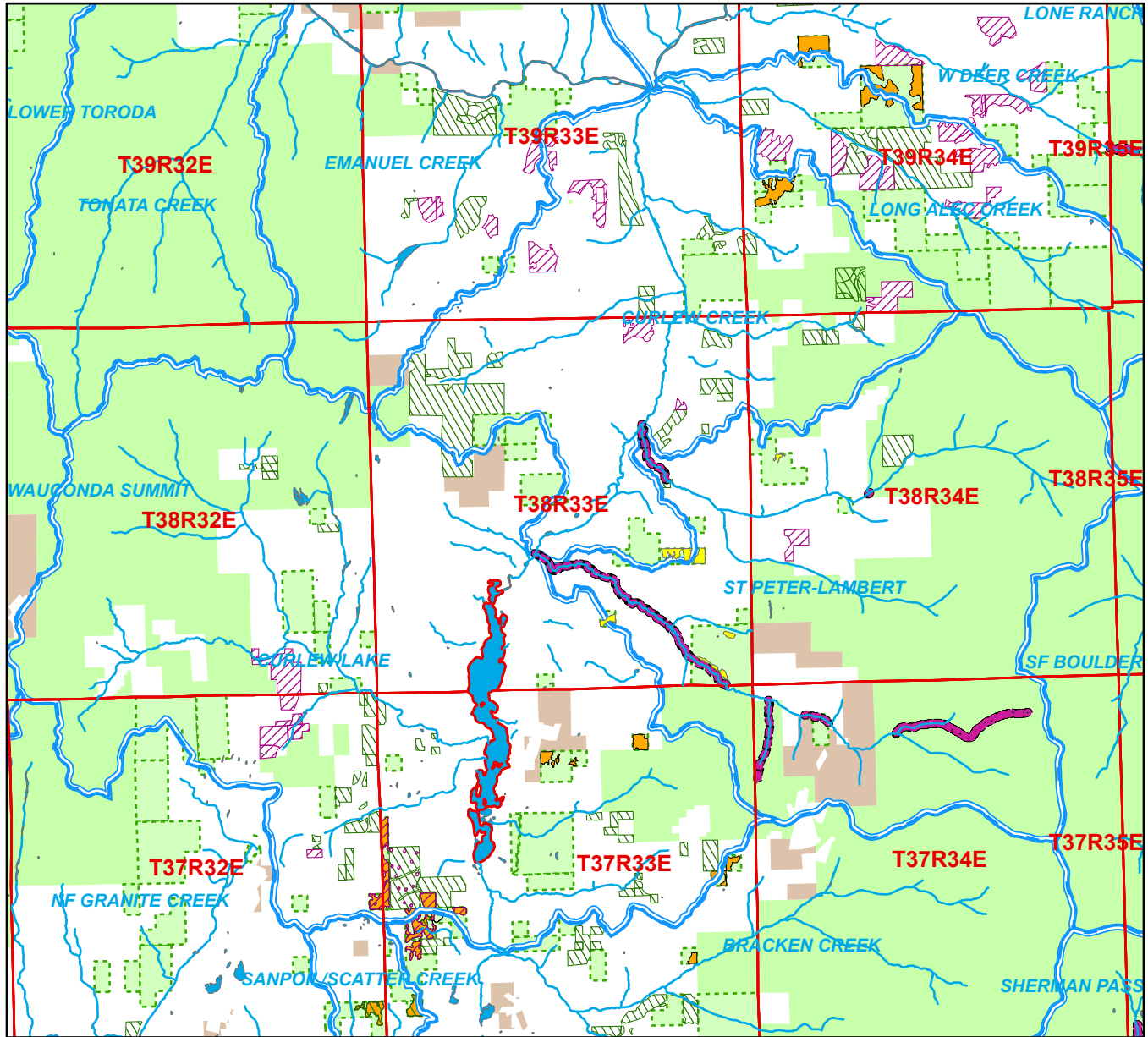
Watershed Administrative Unit Map

Sale Name: Q ST PETER
 Sale District: HIGHLANDS
 Sale Date: June, 2025
 Sale Location: T38R33E 23, 24, 27, 36, T38R34E 18
 WAU: Multiple WAUs
 WAU Acres: 99485.3



6	5	4	3	2	1	6	5	4	3	2
7	8	9	10	11	12	7	8	9	10	11
18	17	16	15	14	13	18	17	16	15	14
19	20	21	22	23	24	19	20	21	22	23
30	29	28	27	26	25	30	29	28	27	26
31	32	33	34	35	36	31	32	33	34	35
6	5	4	3	2	1	6	5	4	3	2
27	28	29	30	31	32	27	28	29	30	31

This color map is produced by the Washington Department of Natural Resources (DNR), for discussion purposes only. If the copy you have is black and white, some of the information may not read correctly. Wetland locations are from the National Wetland Inventory (NWI) database. They are incomplete and may need field verification. The source data for this map is stored on the DNR's Geographic Information System. Although the DNR makes every reasonable effort to keep such data current, it cannot and does not accept liability for any errors or omissions. No warranty accompanies this material. Refer to the SEPA Checklist for additional detail.



- 0 - 25 Years old
- Open Water
- Type 4 Streams
- Even-Aged
- 26 - 50 Years old
- Wetlands (NWI)
- 303D Listed Water
- Sold Sales
- 51 - 75 Years old
- Type 1 Streams
- 40-Ft. Contours
- Timber Sale
- 76+ Years old
- Type 2 Streams
- DNR-Managed Land
- Type 3 Streams
- DNR NAP's & NRCA's
- Other/Unknown

*Sold Sales, Even-Aged and Uneven-Aged Approved represent data from last seven years only

Map created on: 12/2/2024