



Public Auction Sale of Timber

Book 989

.....

July 2018



WASHINGTON STATE DEPT OF
**NATURAL
RESOURCES**

IMPORTANT NOTICES

Natural Resources (DNR)

Governmental Regulatory Actions or Orders

The purchaser assumes the risk of liabilities related to regulatory actions or orders by any government agency that may affect the operability of these timber sales. Such regulatory actions or orders include, but are not limited to, actions taken pursuant to the State Forest Practices Act, Chapter 76.09 RCW, and the Federal Endangered Species Act, 16 U.S.C. §§ 1531-1544. Please see timber sale contract clauses G-066 and G-220 for further information.

Threatened and Endangered Species

DNR cannot verify the presence or absence of **any** threatened or endangered species that may affect the operability of the timber sale. Purchasers must rely on their own assessments.

Export Restricted

All timber purchased under these state DNR contracts shall not be exported outside of the United States until the timber has been processed. Purchasers shall not violate any of the prohibitions in WAC 240-15-015 (relating to the prohibitions on export and substitution), WAC 240-15-025 (relating to reporting requirements), and WAC 240-15-030 (relating to enforcement). If purchasers knowingly violate WAC 240-15-015, purchasers shall be barred from bidding on or purchasing export restricted timber as provided.

Cover photos

Timber Sales in this book are from state trust lands, managed to help build K-12 public schools, state universities, colleges, prisons, mental hospitals, the state Capitol; and to support local services in many counties.

Top left: State Forest Lands are managed to provide revenue to the counties in which they are located such as the Pacific County Courthouse in South Bend, Washington. Northwest Bridge Company of Portland, Oregon completed construction of the courthouse building in June of 1911. One unusual feature of the historic building is an "art glass dome" that crowns the structure. The courthouse is listed on the National Register of Historic Places.
Photo: DNR/Tom Heller

Bottom left: Grade school students learn from high school students in the North Mason School District during Students in the Watershed day in the Tahuya State Forest trust lands. **Photo:** DNR/Staff

Right: Landscape view of DNR managed trust lands in western Washington. **Photo:** DNR/Staff

Table of Contents

Certification Opportunities for DNR Timber Purchasers	Page 3
Bidder/Purchaser Auction and Bidding Information	Page 5
Summary of All Sales Being Offered in July	Page 11
McKinnon VDT VRH	Page 13
Guppy	Page 21
Carr Rd Fire Salvage	Page 27
Potato Skins Sorts	Page 31
Two For Kip	Page 37
Sealed Bid Form and Instructions	Page 41
Statewide Bid Bond and Instructions	Page 43
Timber Sale per Sale Bid Bond and Instructions	Page 47
Log Sort Sealed Bid Form and Instructions	Page 51



Certification Opportunities for DNR Timber Purchasers

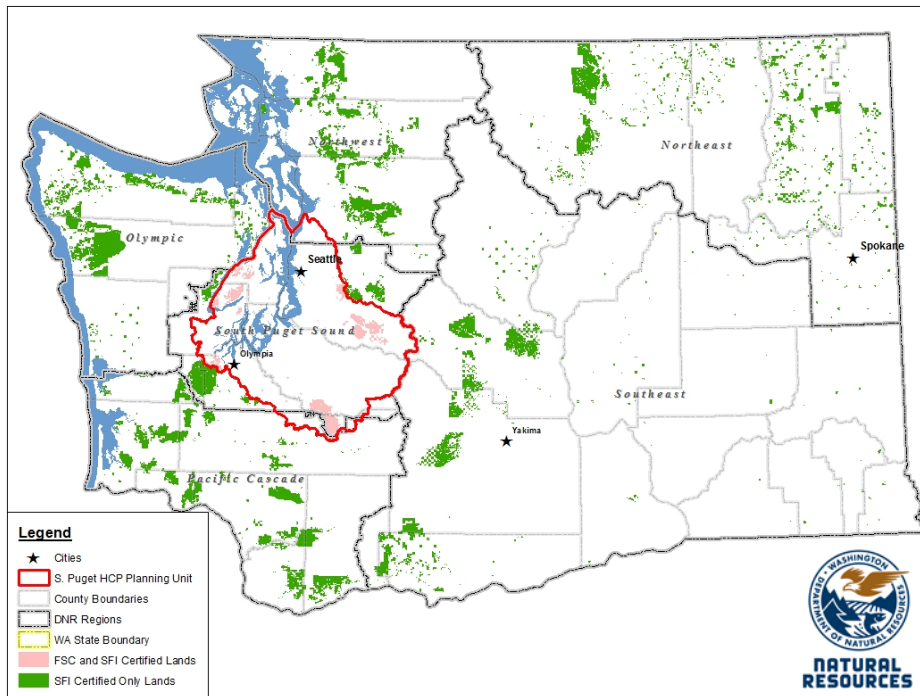
Certified forests are grown to an approved set of standards which demonstrate environmentally responsible, socially beneficial, and economically viable management practices that promote responsible forestry. This unique commitment to responsible forestry recognizes that forest landowners play a critical role in ensuring the long-term health and sustainability of our forests.

Forest Stewardship Council® (FSC®) is an independent, non-profit organization that promotes responsible management of the world's working forests through the development of forest management standards, a voluntary certification system, and trademarks that provide recognition and value to products bearing the FSC label in the marketplace. FSC standards ensure forestry is practiced in an environmentally responsible, socially beneficial, and economically viable way.

Sustainable Forestry Initiative Inc. is an independent, non-profit organization internationally endorsed and accepted around the world. The Sustainable Forestry Initiative® (SFI) program is based on the premise that responsible environmental behavior and sound business decisions can coexist. Its three-chamber Board of Directors governs all aspects of the SFI® program, with equal representation from the environmental, economic, and social sectors.

Currently, all Department of Natural Resources (DNR)-managed forested state trust lands in Washington State are certified under the SFI program Standard. Lands within DNR's South Puget Habitat Conservation Plan Planning Unit, located within parts of King, Pierce, Thurston, Lewis, Kitsap, and Mason counties, are dually certified under both the FSC-US Forest Management Standard and the SFI program Standard.

Certification under each standard involves an inspection audit of the landowner's forest management activities by an independent, accredited third-party to verify that it meets specified forest management principles. If the forest unit complies with the specific standard, the landowner receives a certificate of conformance ensuring that responsible forestry is being practiced. Both standards encourage integration of perpetual growing and harvesting of trees with strong measures to protect wildlife, plants, soil, water, and air quality. Both standards provide a seal of approval that forests certified under these principles are well-managed. The global marketplace recognizes and endorses multiple forest certification standards. Each standard has individual market niches. By being dually certified, DNR can maximize its customer base and provide choices to the consumer.



DNR's FSC certificate number is: BV-FM/COC-080501

DNR's SFI certificate number is: BV-SFIS-US09000572

DNR-managed forested state trust lands within the South Puget Habitat Conservation Plan Planning Unit (located within parts of King, Pierce, Thurston, Lewis, Kitsap, and Mason counties) are certified as being in compliance with the Forest Stewardship Council Pacific Coast Regional Standard.

To learn more about chain of custody and demonstrating that your timber is derived from a responsibly managed forest and/or to learn more about becoming a participant in the FSC Program, visit <https://us.fsc.org/>.

To learn more about DNR timber sales certified under the FSC Standard, visit www.dnr.wa.gov.

FSC A.C. owns all right, title, and interest in and to the Forest Stewardship Council trademarks.

All DNR-managed forested state trust lands across the state have been certified as being in compliance with the Sustainable Forestry Initiative program Standard.

To learn more about chain of custody and demonstrating that your timber is derived from a responsibly managed forest and/or to learn more about becoming a participant in the SFI program, visit www.sfiprogram.org.

To learn more about DNR timber sales certified under the SFI program Standard, visit www.dnr.wa.gov.

SFI Marks are registered marks owned by Sustainable Forestry Initiative Inc.

To learn more about certification on DNR-managed forested state trust lands, visit

http://www.dnr.wa.gov/BusinessPermits/Topics/TimberSaleAuction/Pages/lm_forest_certification.aspx or contact:

Product Sales & Leasing Division, Product Sales Section:

Tom Shay, Assistant Division Manager, 360-902-1561, thomas.shay@dnr.wa.gov
 Steve Teitzel, Operations, 360-902-1741, steve.teitzel@dnr.wa.gov

Forest Resources Division, HCP and Scientific Consultation Section:

Allen Estep, Assistant Division Manager, 360-902-2898, allen.estep@dnr.wa.gov
 Douglas Kennedy, Forest Certification Program Lead, 360-902-1283, douglas.kennedy@dnr.wa.gov

Washington State Department of Natural Resources (DNR)

Bidder's/Purchaser's Inspection of Sale Area and Forest Products

Acreage estimates and volume estimates contained within each timber notice of sale and each timber sale contract are made only for administrative and identification purposes. Except as expressly provided by the timber sale contract, the purchaser shall be responsible for paying the entire purchase price, even if the actual acreage or timber volume varies from the estimated quantity or volume shown.

All prospective bidders have the opportunity and are expected to inspect the sale area and the forest products located thereon. Bidders shall not rely on any representations by the State including, but not limited to, acreage estimates, volume estimates, appraisal or pre-bid documentation. The successful bidder/purchaser will further warrant that they have entered the timber sale contract without any reliance upon the DNR's volume estimates, acreage estimates, appraisals, pre-bid documentation, or any other representation by the DNR.

Any timber sale contract arising out of these public auctions will require the successful purchaser to warrant that they are entering the timber sale contract based solely upon their own judgment of the value of the forest products, formed after their own examination and inspection of both the timber sale area and the forest products being sold.

Exclusion and Disclaimer of Warranties

The PARTIES AGREE that the IMPLIED WARRANTIES OF MERCHANTABILITY AND FITNESS FOR A PARTICULAR PURPOSE, and ALL OTHER WARRANTIES EXPRESS OR IMPLIED, ARE EXCLUDED from this transaction, and shall not apply to the goods sold. For example, THE FOLLOWING SPECIFIC MATTERS ARE NOT WARRANTED, and are EXCLUDED from this transaction:

- a. ***The merchantability of the forest products.*** The use of the term "merchantable" in any document is not intended to vary the foregoing.
- b. ***The condition of the forest products.*** All forest products will be conveyed "AS IS."
- c. ***The acreage contained within any sale area.*** Any acreage descriptions appearing in the timber notices of sale, timber sale contract, timber sale map or other documents are estimates only, provided solely for administrative and identification purposes.
- d. ***The volume, quality, or grade of the forest products.*** The descriptions of the forest products to be conveyed are estimates only, made solely for administrative and identification purposes.
- e. ***The correctness of any soil or surface conditions, presale construction appraisals, investigations, and all other pre-bid documents prepared by or for the State.*** These documents have been prepared for the State's appraisal purposes only.
- f. ***That the sale area is free from threatened or endangered species, or their habitat.*** The State is not responsible for any interferences with forestry operations that result from the presence of any

threatened or endangered species, or the presence of their habitat, within the sale area.

g. *That the forestry operations to be performed under this contract will be free from regulatory actions by governmental agencies.* The State is not responsible for actions to enforce regulatory laws, such as the Washington Forest Practices Act (Chapter 76.09 RCW), taken by the Department of Natural Resources or any other agency that may affect the operability of these timber sales.

h. Items contained in any other documents prepared for or by the State.

Please also see timber sale contract clause G-060 for further information.

BIDDING PROCEDURES FOR TIMBER AUCTIONS

The general requirements that follow are a part of all Timber Notices of Sale to be auctioned by the Department of Natural Resources (DNR).

General Information

The State reserves the right to waive minor irregularities and the right to reject any or all bids.

A. This book contains the timber notices of sale and maps for each timber sale scheduled to be auctioned. More specific information can be obtained by contacting the appropriate region office at the number listed on the back cover of this book.

B. The timber notice of sale is a summary of sale information. For more specific information, interested parties are encouraged to view the Appraisal Packets on the DNR Internet Site @ www.dnr.wa.gov, this will take you directly to the Product Sales Section. The Appraisal Packets contain **DRAFT** copies of the timber notice of sale, map, contract, road plan, cruise data, precruise and cruise narrative, Forest Practices Application (FPA).

C. The sale preview packets may be obtained at no charge for individual sales by visiting the appropriate region office.

D. Timber sale contracts contain extensive terms and conditions that will be binding upon successful high bidders. Each bidder should carefully review all terms contained in the appropriate **DRAFT** timber sale contract prior to bidding on a sale, and should review the final contract prior to signing. **DRAFT** timber sale contracts are contained in the preview and presales packets and are available upon request at the respective region office.

E. Sales advertised in this book have not been approved by the Board of Natural Resources and are subject to the Board's approval before they will be sold. The Board meets and approves sales approximately six weeks prior to auction. All sales are subject to confirmation by the DNR under RCW 79.15.120.

F. The State does not guarantee the accuracy of any information contained herein pertaining to particular sales. Therefore, all prospective purchasers are expected to make their own independent inspections and appraisals prior to bidding.

G. If any conflict exists between the information in the Timber Notice of Sale, timber sale map,

sale preview packets and that in the timber sale contract, the **signed contract will prevail**.

H. Purchasers must pay the Forest Excise Tax on the bid price, permanent road construction costs, and other considerations. The tax rate is 5% without the EARR credit and 4.2% with the credit. For more information contact the Department of Revenue, Forest Tax Section at 1-800-548-8829.

I. **Within 30 days of sale confirmation, the apparent high bidder will provide to the State the Performance Security** specified on each Notice of Sale. **The successful bidder also agrees to return a signed contract to the State within 30 days of confirmation.** Failure to provide a signed contract to the state within 30 days of confirmation may result in a loss of bidder's rights to the products sold and forfeiture of initial deposit moneys.

J. Each DNR region office has information about sales offered in that region. For further information, contact the respective DNR region office. Region office addresses and telephone numbers appear on the back cover of this booklet.

K. The purchaser assumes the responsibility for any costs associated with extra maintenance or repair levied by a county for any county road used by the purchaser.

Bidding Process

A. All timber will be auctioned using the sealed bid method.

B. Bids submitted on day of auction must be in the bid box at the specified auction location before 10:00 a.m. The respective DNR region office must receive mailed bids by 4:30 p.m., on the last business day before the auction. Bidders assume all risk for the method of delivery.

C. The DNR has the right to reject bid forms that are completed incorrectly. *All bid forms must have an original signature on behalf of the person or entity submitting the bid, and must be on the form provided in this booklet or a photocopy thereof. Revised documents are not permissible.* Bidding instructions are on the back of the Sealed Bid Form. A bid deposit must be included in the sealed bid envelope unless using a Timber Sale Statewide Bid Bond.

D. All bids must include the completed Sealed Bid Form and bid deposit.

E. Bids will be opened in each respective region in the order in which sales appear in the Public Auction Sale of Timber book (alphabetically by county and by agreement number). Sales added after the book is printed will be inserted to retain this order. Sort sales may be auctioned out of this sequence at the State's convpignce.

F. If a tie bid occurs, the names of the tie bidders will be placed in a hat and the successful bidder will be determined by a drawing.

G. For sales offered on a stumpage basis, the apparent high bidder on a particular sale will have the option of withdrawing additional sealed bids submitted for any remaining sales to be auctioned. The apparent high bidder must exercise this option within two minutes after the apparent high bidder is announced. **This option is not available for sales offered on a delivered basis.**

Auction Time and Location

Auctions will start at 10:00 a.m. and close at 4:00 p.m. on the date and at the location specified in each Timber Notice of Sale.

Bid Deposits

- A. Required bid deposits are listed on each Timber Notice of Sale.
- B. Bid deposits must be in the form of cash, certified check, cashiers' check, money order or bid bond.
- C. Bid bonds may be either a Timber Sale Statewide Bid Bond or a Timber Sale Per Sale Bid Bond.
- D. All bid deposits shall be submitted by the person or entity submitting the bid and made payable to the Department of Natural Resources. **Third party deposits will not be accepted.**

Timber Sale Per Sale Bid Bonds

- A. The Per Sale Bid Bond shall guarantee payment of the bid deposit **within ten days of auction.**
- B. The balance between the bid bond and the Initial Deposit payment is due **by 4:30 p.m., on the day of auction.**
- C. Additional forms and instructions for a Per Sale Bid Bond are available at any DNR region office.

Timber Sale Statewide Bid Bond

- A. Statewide Bid Bonds shall guarantee payment of the Initial Deposit on any statewide timber sale while the bond is in effect.
- B. The Statewide Bid Bond must be received by the Department of Natural Resources, Product Sales and Leasing Division, P.O. Box 47014, Olympia, Washington, 98504-7014, ten days in advance of the auction date. The bond shall be in the amount of \$150,000.00.
- C. Successful bidders using a Statewide Bid Bond must pay the total Initial Deposit payment (10% of the total bid price) **by 4:30 p.m., on the day of the auction.**
- D. A Statewide Bid Bond cannot be used to secure the Initial Deposit payment due the day of auction.
- E. Additional forms and instructions for a statewide bid bond are available at any DNR region office.

Payments

The initial deposit for a sale is 10% of the total bid value as submitted by the apparent high bidder (25% if the bidder is a defaulter as defined under WAC 332-140-300) and never less than \$5,000.00 for lump sum sales. For Lump Sum sales appraised at less than \$5,000.00, the entire bid value is due on day of auction.

- A. Apparent high bidders using cash, certified check, cashiers' check or money order as a bid deposit must pay the total Initial Deposit amount by 4:30 p.m. on auction day.
- B. Apparent high bidders using a Timber Sale Per Sale Bid Bond as a bid deposit must pay the difference between the bid deposit and the total initial deposit by 4:30 p.m., on the day of auction. The bid bond amount must be replaced with a certified check, cashiers' check, bank draft, cash, money order, or wire transfer within ten days of the auction.
- C. Apparent high bidders using a Timber Sale Statewide Bid Bond must pay the entire Initial Deposit amount by 4:30 p.m. on the day of auction.

Fees due on the day of sale must be paid by 4:30 p.m.

All payments must be in the form of a certified check, cashiers' check, bank draft, cash, money order or wire transfer.

Eligibility to Bid

In order to bid on State timber sales you must be:

- 18 years of age (or have a co-signer who meets the eligibility requirements)
- Licensed to do business in the State of Washington
- Eligible to bid on Export Restricted timber
- Authorized to submit bids

Authorized Representatives

Company officers or company authorized representatives may bid on State sales, sign State documents, or sign checks. A list of authorized representatives and their specific authorities must be submitted, in writing, to the Department of Natural Resources, Product Sales and Leasing Division, P.O. Box 47014, Olympia, Washington, 98504-7014, ten days in advance of the auction. A company owner or officer must sign this submittal.



Summary Report of All Sales for the Month of July 2018

Board Sales

<u>County</u>	<u>Region</u>	<u>Agree #</u>	<u>FSC® Sale Name</u>	<u>Volume</u>	<u>Value</u>
Jefferson	Olympic	96641	MCKINNON VDT VRH	4,530	\$848,000.00
Jefferson	Olympic	96783	GUPPY	1,497	\$439,000.00
Lewis	Pacific Cascade	96859	CARR RD FIRE SALVAGE	87	\$28,000.00
Spokane	Northeast	96892	POTATO SKINS SORTS	6,936	\$2,687,695.00
Whatcom	Northwest	93616	TWO FOR KIP	2,579	\$629,000.00
			Total	=====	=====
				15,629	\$4,631,695.00



*Scan with your smartphone or tablet to go
to the July 2018 timber auction page*



TIMBER NOTICE OF SALE

SALE NAME: MCKINNON VDT VRH

AGREEMENT NO: 30-96641

AUCTION: July 25, 2018 starting at 10:00 a.m., Olympic Region Office, Forks, WA

COUNTY: Jefferson

SALE LOCATION: Sale located approximately 50 miles south of Forks, WA

PRODUCTS SOLD AND SALE AREA:

All timber, except trees marked with a band of blue paint or bounded out by leave tree area tags, downed red cedar, or timber that has been on the ground for five years or more (five years is defined by more than 1.5 inches of sap rot, bounded by timber sale boundary tags, the Q-3000 Road, 1200 Road, the 1200.02, the 1212W, and the 1212.02 Road in Unit 1;

All timber as described in Schedule C, except those trees described in Schedule D, bounded by timber sale boundary tags, the 1200.02, the 1200.025, the 1200.022 Road, and double blue painted slashes in Unit 2; timber sale boundary tags, the 1200.02 Road, the 1200.026 Road and double blue painted slashes in Unit 3; timber sale boundary tags, the 1212W Road, and the 1212.2 Road in Unit 4; timber sale boundary tags and the 1212E Road in Unit 5; timber sale boundary tags in Units 6 and 8; timber sale boundary tags and the Q-3325N Road in Unit 7; timber sale boundary tags, double blue painted slashes, and the Q-3320 Road in Unit 9;

All timber bounded by right of way boundary tags, except that title to the timber within the right of way boundary tags is not conveyed to the Purchaser unless the road segments are actually constructed;

All timber in areas shown as gaps in Units 2 - 9, bounded by special management unit boundary tags; on part(s) of Sections 14, 15, 22, 23 and 24 all in Township 24 North, Range 12 West, W.M., containing 526 acres, more or less.

CERTIFICATION: This sale is certified under the Sustainable Forestry Initiative® program Standard (cert no: BV-SFIS-US09000572)

ESTIMATED SALE VOLUMES AND QUALITY:

Table with columns: Species, Avg DBH, Ring Count, Total MBF, Total Tons, Price \$/Ton, and MBF by Grade (1P, 2P, 3P, SM, 1S, 2S, 3S, 4S, UT). Rows include Douglas fir, Hemlock, Red cedar, Spruce, Red alder, and Sale Total.

MINIMUM BID: \$24.42/ton (est. value \$848,000.00) BID METHOD: Sealed Bids

PERFORMANCE SECURITY: \$100,000.00 SALE TYPE: Tonnage Scale

EXPIRATION DATE: October 31, 2021 ALLOCATION: Export Restricted



TIMBER NOTICE OF SALE

BIDDABLE SPECIES: Spruce, Hemlock, Douglas fir combined

BID DEPOSIT: \$84,800.00 or Bid Bond. Said deposit shall constitute an opening bid at the appraised price.

HARVEST METHOD: 100% ground methods. 30' equipment limitation zones.

ROADS: 7.50 stations of required construction. 11.70 stations of optional construction. 0.30 stations of required existing log fill removal. 652.32 stations of optional pre-haul maintenance. 37.88 stations of deactivation. In addition, there will be no activities (other than haul) one hour before to two hours after official sunrise and one hour before to one hour after official sunset from April 1 through September 23 on the 1212 (stations 70+85 - 92+55), 1212.2 (stations 5+45 - 9+61), 1212.3, Q-3320, Q-3325 (stations 28+85 - 62+53, Q-3325.3 (stations 16+20 - 18+00), Q-3325.4, Q-3328 and Q-3329. Road construction will not be permitted from October 1 to June 30 unless authorized in writing by the Contract Administrator on the Q-3325 (stations 28+70 - 34+38), Q-3325.3 (stations 7+40 - 18+00), Q-3325.4, 1200.024 (stations 10+85 - 21+95), 1200.0242, 1200.0243, 1200.0244 and 1212.231. The hauling of forest products will not be permitted from October 1 to June 30 unless authorized in writing by the Contract Administrator on the Q-3325 (stations 28+70 - 34+38), Q-3325.3 (stations 7+40 - 18+00), Q-3325.4, 1200.024 (stations 10+85 - 21+95), 1200.0242, 1200.0243, 1200.0244 and 1212.231.

ACREAGE DETERMINATION

CRUISE METHOD: Sale acreage was 100% GPS'd. Sale units were cruised using a variable plot sample.

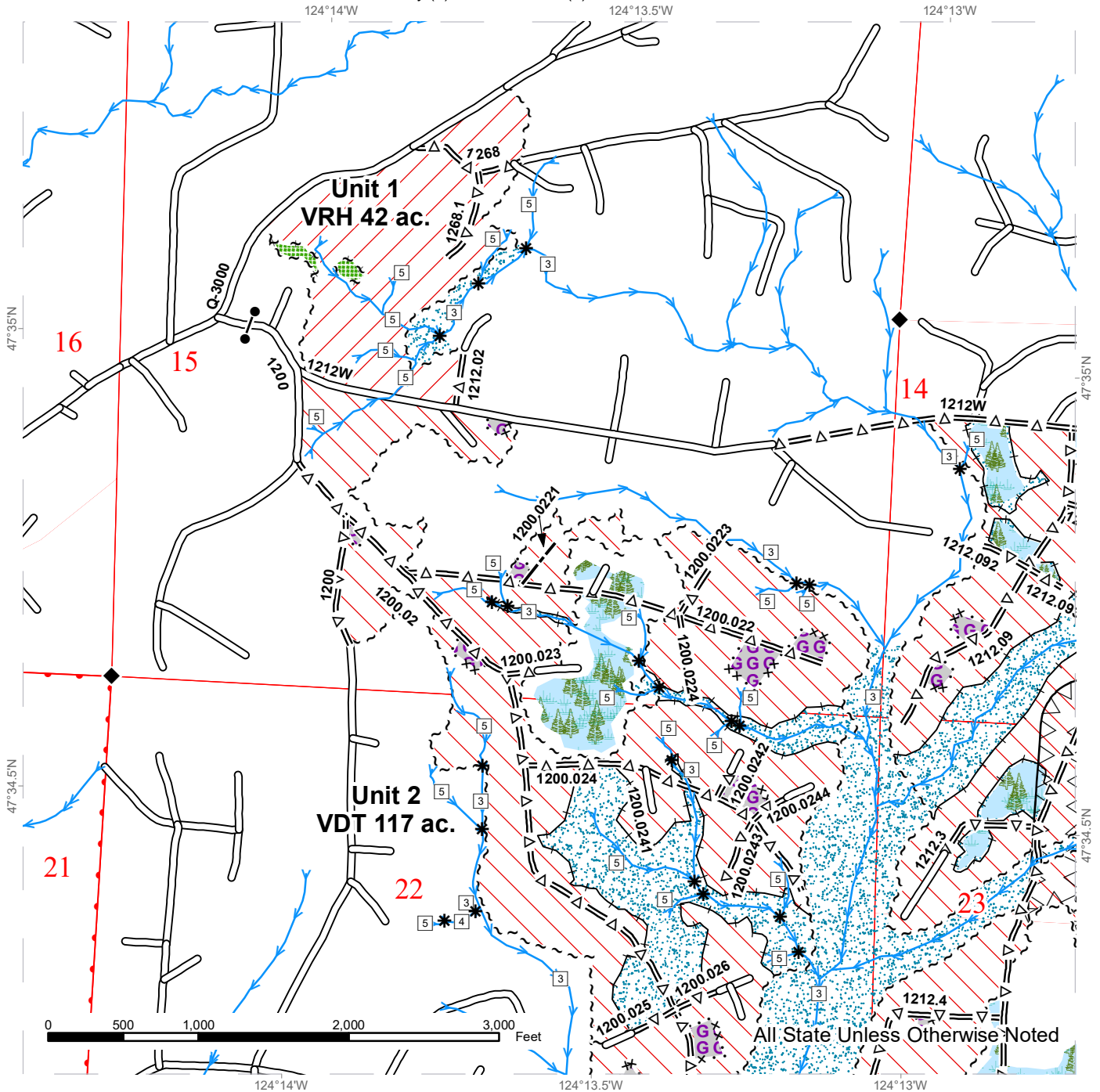
FEES: \$80,408.00 is due on day of sale. \$1.17 per ton is due upon removal. These are in addition to the bid price.

SPECIAL REMARKS: There is a locked gate on the 1200 Road - contact the Olympic Region Dispatch Center at 360-374-2811 to obtain a AA-1 key.

TIMBER SALE MAP

SALE NAME: MCKINNON VDT VRH
AGREEMENT #: 30-096641
TOWNSHIP(S): T24R12W
TRUST(S): Common School and Indemnity (3), Normal School (8)

REGION: Olympic Region
COUNTY(S): Jefferson
ELEVATION RGE: 200-770



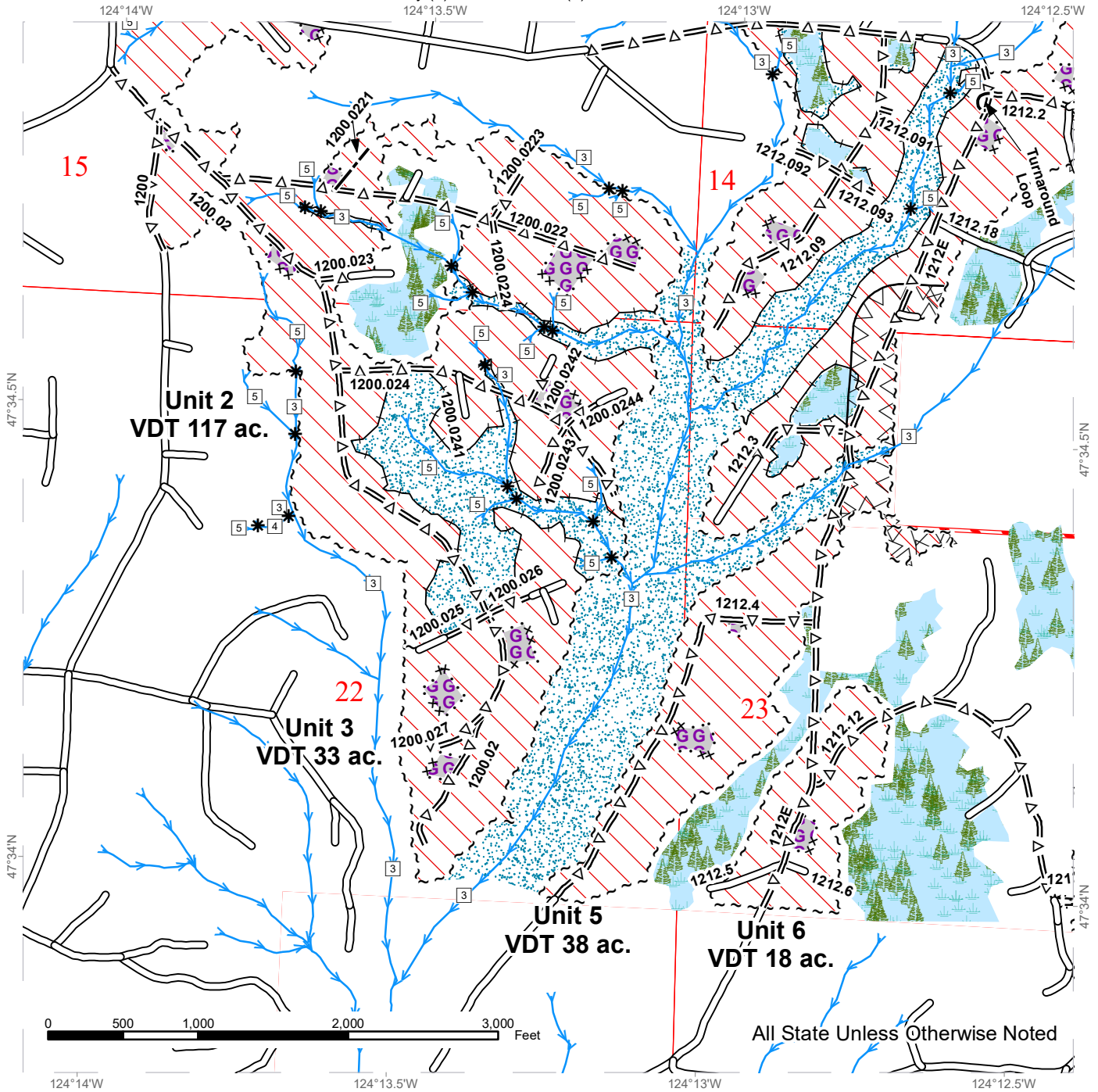
Stream Type	Sale Boundary Tags	Forested wetlands
Stream Type Break	Leave Tree Tags	Open Water
Survey Monument	Skip (Double Blue Slashes)	Gap
Gate	Special Management Area Tags	Leave Tree Area
Streams	Right of Way Tags	Skip/RMZ/WMZ
Existing Roads	Property Line	Variable Density Thinning
Optional Pre-Haul Maintenance	Section Lines	Variable Retention Harvest
Optional Construction		Marbled Murrelet Timing Restrictions
Required Construction		



TIMBER SALE MAP

SALE NAME: MCKINNON VDT VRH
AGREEMENT #: 30-096641
TOWNSHIP(S): T24R12W
TRUST(S): Common School and Indemnity (3), Normal School (8)

REGION: Olympic Region
COUNTY(S): Jefferson
ELEVATION RGE: 200-770



All State Unless Otherwise Noted

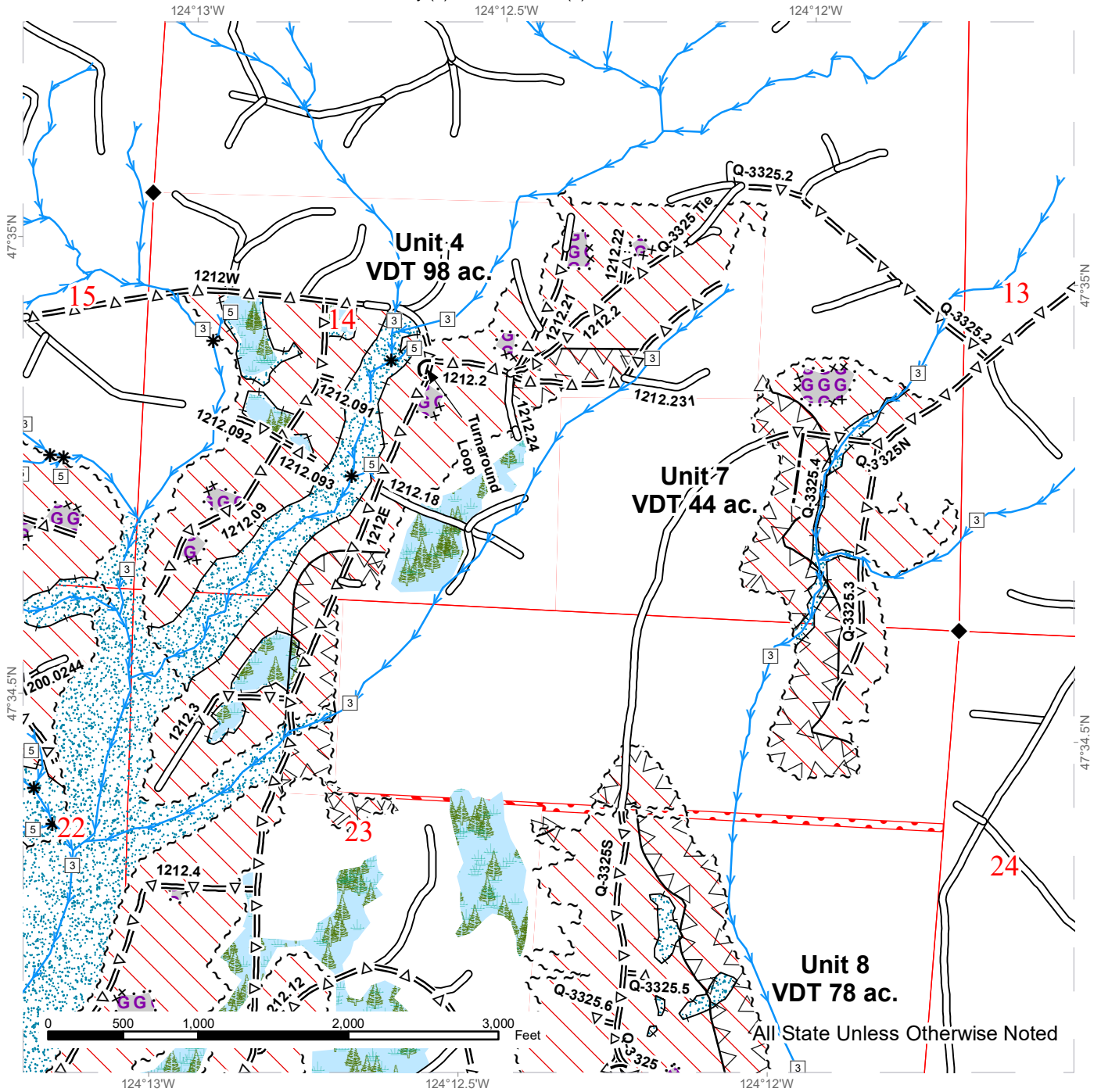
Stream Type	Sale Boundary Tags	Forested wetlands
Stream Type Break	Leave Tree Tags	Open Water
Survey Monument	Skip (Double Blue Slashes)	Gap
Gate	Special Management Area Tags	Leave Tree Area
Streams	Right of Way Tags	Skip/RMZ/WMZ
Existing Roads	Property Line	Variable Density Thinning
Optional Pre-Haul Maintenance	Section Lines	Variable Retention Harvest
Optional Construction		Marbled Murrelet Timing Restrictions
Required Construction		



TIMBER SALE MAP

SALE NAME: MCKINNON VDT VRH
AGREEMENT #: 30-096641
TOWNSHIP(S): T24R12W
TRUST(S): Common School and Indemnity (3), Normal School (8)

REGION: Olympic Region
COUNTY(S): Jefferson
ELEVATION RGE: 200-770



All State Unless Otherwise Noted

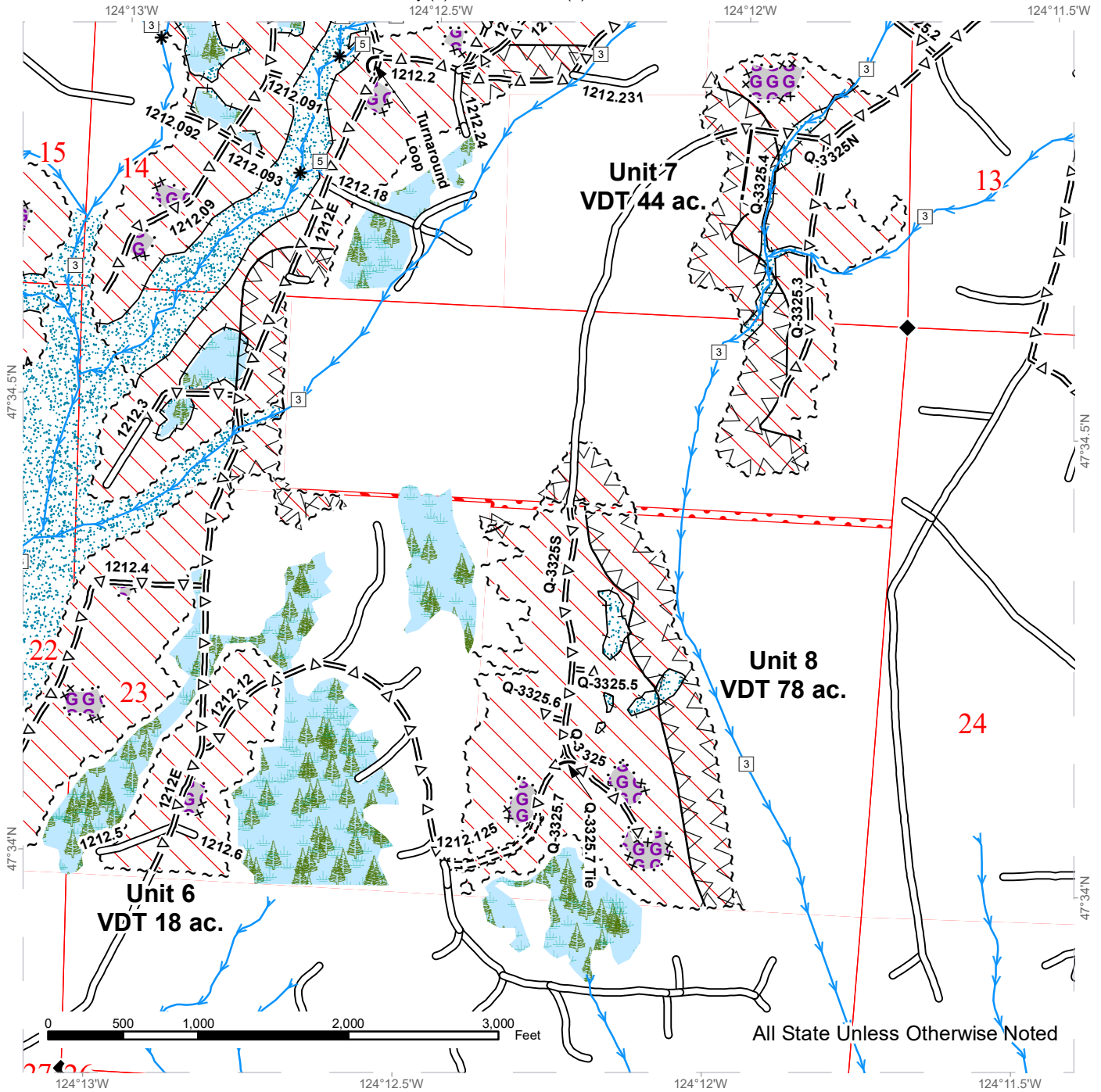
Stream Type	Sale Boundary Tags	Forested wetlands
Stream Type Break	Leave Tree Tags	Open Water
Survey Monument	Skip (Double Blue Slashes)	Gap
Gate	Special Management Area Tags	Leave Tree Area
Streams	Right of Way Tags	Skip/RMZ/WMZ
Existing Roads	Property Line	Variable Density Thinning
Optional Pre-Haul Maintenance	Section Lines	Variable Retention Harvest
Optional Construction		Marbled Murrelet Timing Restrictions
Required Construction		



TIMBER SALE MAP

SALE NAME: MCKINNON VDT VRH
AGREEMENT #: 30-096641
TOWNSHIP(S): T24R12W
TRUST(S): Common School and Indemnity (3), Normal School (8)

REGION: Olympic Region
COUNTY(S): Jefferson
ELEVATION RGE: 200-770



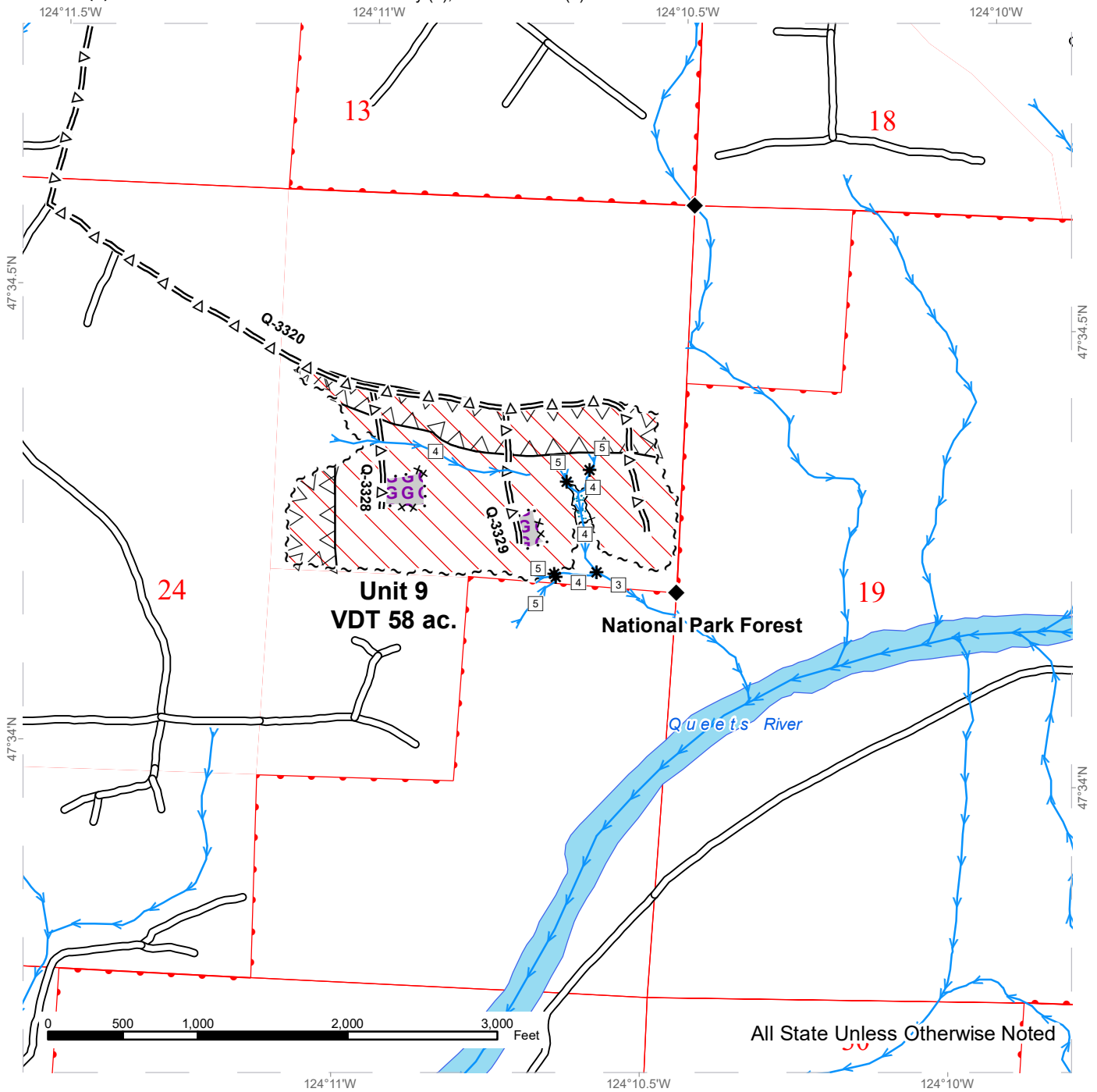
Stream Type	Sale Boundary Tags	Forested wetlands
Stream Type Break	Leave Tree Tags	Open Water
Survey Monument	Skip (Double Blue Slashes)	Gap
Gate	Special Management Area Tags	Leave Tree Area
Streams	Right of Way Tags	Skip/RMZ/WMZ
Existing Roads	Property Line	Variable Density Thinning
Optional Pre-Haul Maintenance	Section Lines	Variable Retention Harvest
Optional Construction		Marbled Murrelet Timing Restrictions
Required Construction		



TIMBER SALE MAP

SALE NAME: MCKINNON VDT VRH
AGREEMENT #: 30-096641
TOWNSHIP(S): T24R12W
TRUST(S): Common School and Indemnity (3), Normal School (8)

REGION: Olympic Region
COUNTY(S): Jefferson
ELEVATION RGE: 200-770



All State Unless Otherwise Noted

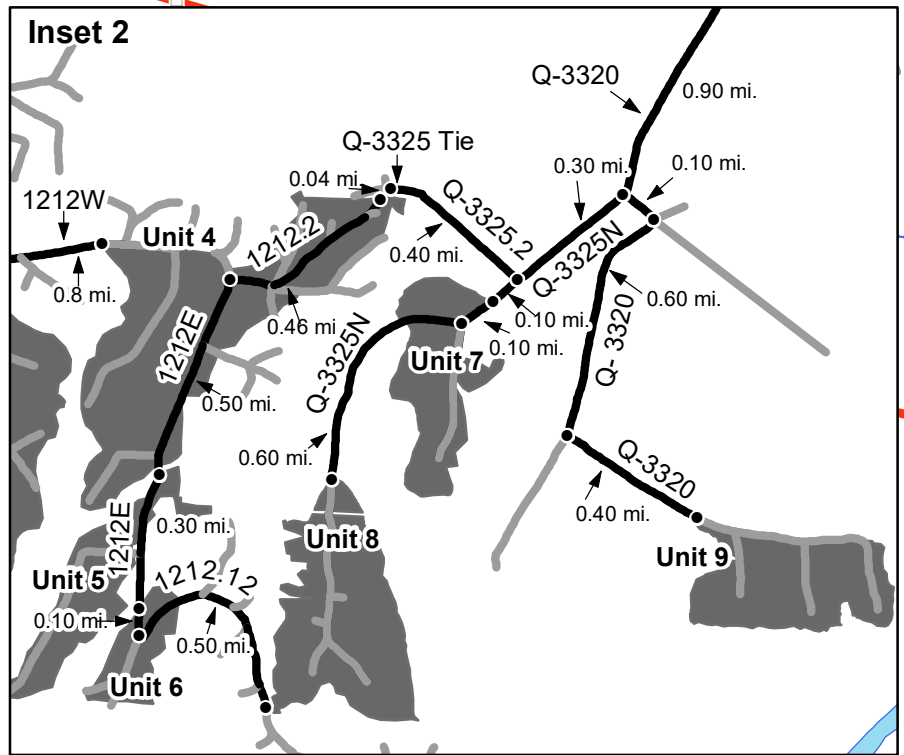
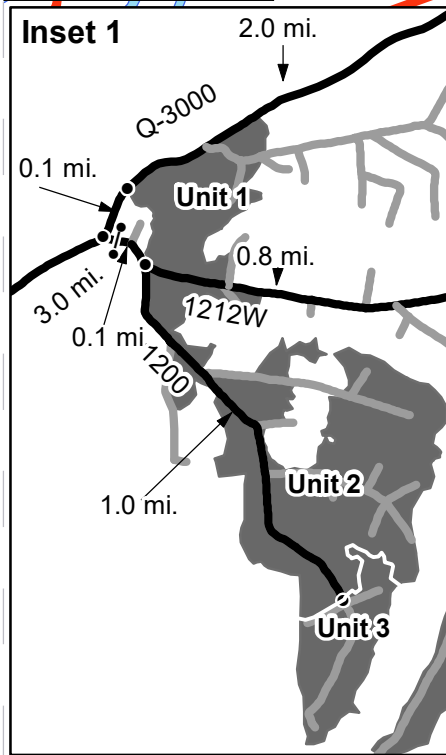
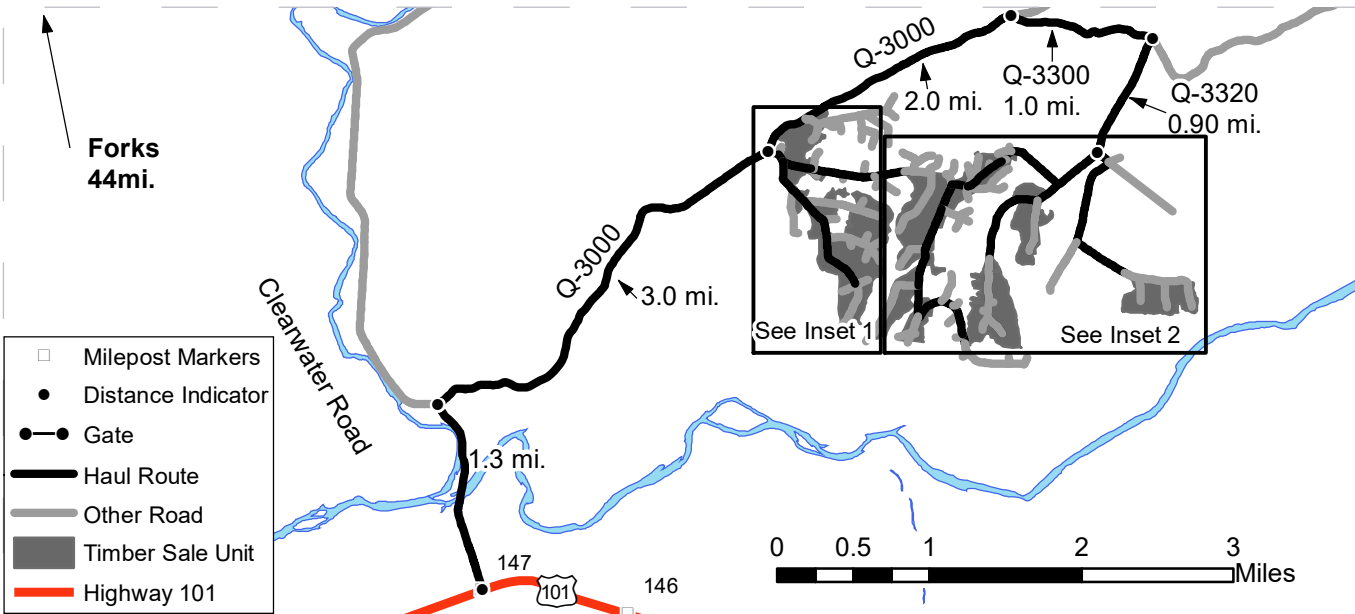
Stream Type	Sale Boundary Tags	Forested wetlands
Stream Type Break	Leave Tree Tags	Open Water
Survey Monument	Skip (Double Blue Slashes)	Gap
Gate	Special Management Area Tags	Leave Tree Area
Streams	Right of Way Tags	Skip/RMZ/WMZ
Existing Roads	Property Line	Variable Density Thinning
Optional Pre-Haul Maintenance	Section Lines	Variable Retention Harvest
Optional Construction		Marbled Murrelet Timing Restrictions
Required Construction		



DRIVING MAP

SALE NAME: MCKINNON VDT VRH
AGREEMENT#: 30-096641
TOWNSHIP(S): T24R12W
TRUST(S): Common School and Indemnity (3), Normal School (8)

REGION: Olympic Region
COUNTY(S): Jefferson
ELEVATION RGE: 200-770



Driving Directions:

Unit 1: From Forks, drive 44 miles south on US 101 to MP 147. Turn left on the Clearwater Rd. Drive 1.3 miles and turn right on the Q-3000. Drive 3.1 miles to Unit 1 on the right.
Unit 2: From the Clearwater Rd./Q-3000 junction, continue onto the Q-3000 for 3 miles and turn right onto the 1200. Stay on the 1200 for 0.1 miles and Unit 2 will be on your left.
Unit 3: From the beginning of Unit 2, continue south on the 1200 for 1 mile to reach the beginning of Unit 3.
Unit 4: From the Q-3000/1200 junction, drive east for 0.1 miles. Turn left on the 1212W. Drive 0.8 miles to access the west side of Unit 4. To access the east side of Unit 4, start from the beginning of Unit 1 on the Q-3000 drive 2.0 mi., turn right on the Q-3300, continue 1.0 mi. and turn right on the Q-3320. Drive 0.9 mi. and keep right on the Q-3325N. Drive 0.30 mi. and turn right on the Q-3325.2, continue 0.40 mi. and turn left on the Q-3325 tie road. Drive 0.04 mi. to Unit 4 on the 1212.2.
Unit 5: Continue from the east side of Unit 4 on the 1212.2, drive 0.46 mi. and turn right on the 1212E. Drive 0.50 mi. to Unit 5.
Unit 6: From the beginning of Unit 5 on the 1212E, continue 0.30 mi. to Unit 6.
Unit 7: From the Q-3320/Q-3325N junction, stay right on the Q-3325N and continue for 0.40 miles to access Unit 7.
Unit 8: From the beginning of Unit 7, road is deactivated. Walk 0.10 mi. and turn right on the Q-3325N, walk 0.60 mi. to Unit 8. Alternate route: From the beginning of Unit 6, drive 0.10 mi. and turn left on the 1212.12. Drive 0.50 mi. and Unit 8 will be on the left.
Unit 9: From the beginning of the Q-3300, drive 1.0 mi. and turn right on the Q-3320. Drive 0.90 mi. and turn left to stay on the Q-3320, continue 0.10 mi. and turn right on the Q-3320. Drive 0.60 mi. and turn right on the Q-3320. Drive 0.40 mi. to Unit 9 on the right.





TIMBER NOTICE OF SALE

SALE NAME: GUPPY

AGREEMENT NO: 30-96783

AUCTION: July 25, 2018 starting at 10:00 a.m.,
Olympic Region Office, Forks, WA

COUNTY: Jefferson

SALE LOCATION: Sale located approximately 54 miles south of Forks, WA

**PRODUCTS SOLD
AND SALE AREA:**

All timber, except trees marked with a band of blue paint or bounded out by leave tree area tags, downed red cedar, and timber that has been on the ground for five years or more (with five years defined by more than 1.5 inches of sap rot), bounded by timber sale boundary tags and the Q-1200 Road in Units 1, 2 and 3; timber sale boundary tags for Units 4 and 5; timber sale boundary tags and the West Boundary Road for Unit 6 on part(s) of Sections 25 and 36 all in Township 24 North, Range 11 West, W.M., containing 68 acres, more or less.

CERTIFICATION: This sale is certified under the Sustainable Forestry Initiative® program Standard (cert no: BV-SFIS-US09000572)

ESTIMATED SALE VOLUMES AND QUALITY:

Species	Avg DBH	Ring Count	Total MBF	MBF by Grade								
				1P	2P	3P	SM	1S	2S	3S	4S	UT
Hemlock	14.1	5	905						226	500	176	3
Douglas fir	14.2	5	576						89	357	116	14
Grand fir	25		13						11	2		
Red cedar	14		3									3
Sale Total			1,497									

MINIMUM BID: \$439,000.00

BID METHOD: Sealed Bids

PERFORMANCE

SECURITY: \$87,800.00

SALE TYPE: Lump Sum

EXPIRATION DATE: October 31, 2020

ALLOCATION: Export Restricted

BID DEPOSIT: \$43,900.00 or Bid Bond. Said deposit shall constitute an opening bid at the appraised price.

HARVEST METHOD: 100% Ground methods. 30' Equipment limitations zones on all streams. Falling and Yarding will not be permitted from October 15 to April 1 unless authorized in writing by the Contract Administrator.

ROADS: 3.20 stations of optional construction. 617.75 stations of optional pre-haul maintenance. 13.95 stations of deactivation. Rock haul, timber haul, pre-haul maintenance and Road construction will not be permitted from October 15 to April 15 unless authorized in writing by the Contract Administrator. On the Q-1200, any road work, right of way timber falling and yarding, rock pit operations, or operation of heavy equipment is not permitted from one hour before to two hours after official sunrise and from one hour before to one hour after official sunset, from April 1 through September 23 for marbled murrelet restrictions. The hauling of forest products will not be permitted from October 15 to April 15 unless authorized in writing by the Contract Administrator.



TIMBER NOTICE OF SALE

ACREAGE DETERMINATION

CRUISE METHOD: Sale acreage was 100% GPS'd and sale units were cruised using a variable plot sample.

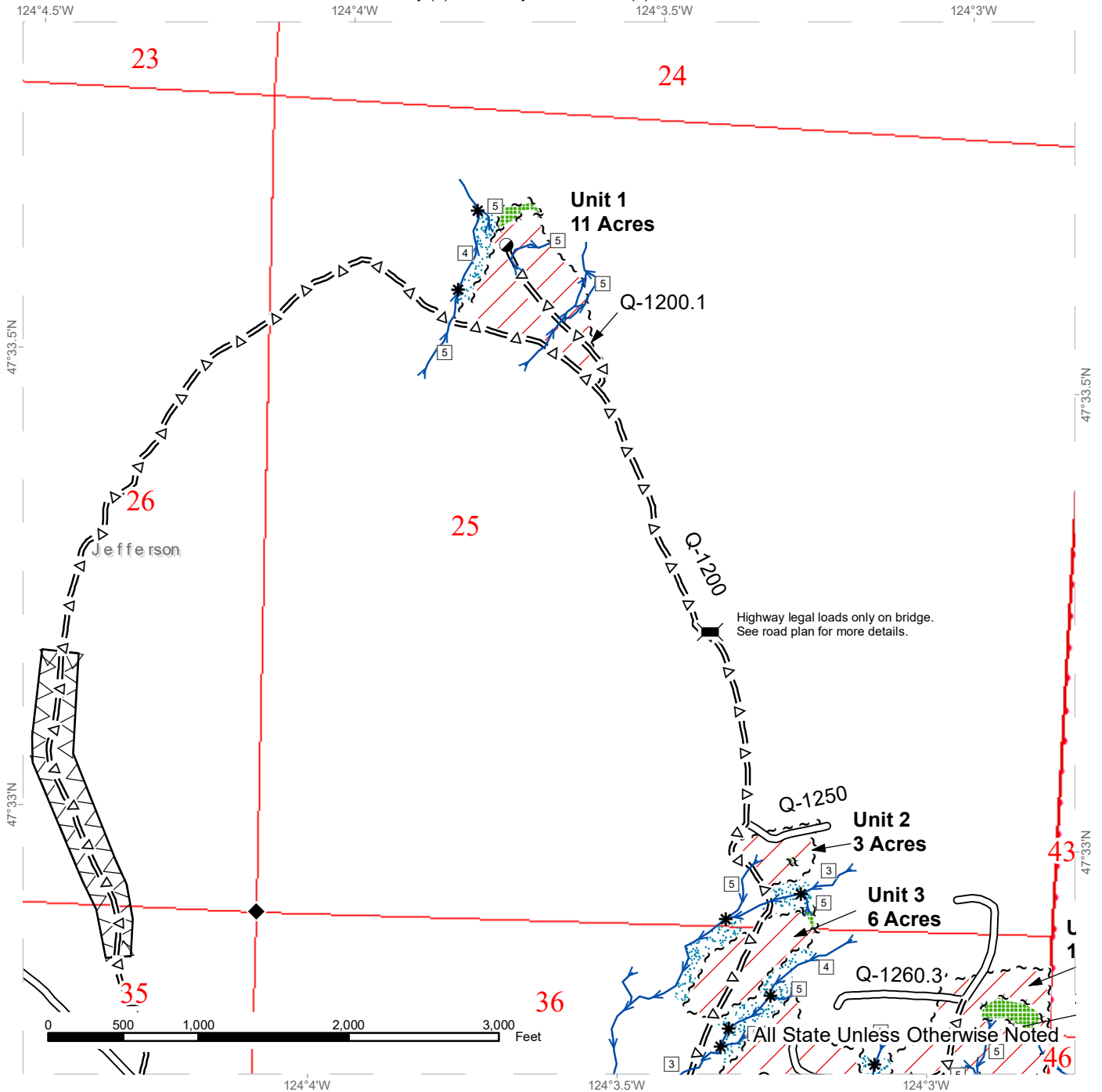
FEES: \$26,572.00 is due on day of sale. \$9.00 per MBF is due upon removal. These are in addition to the bid price.

SPECIAL REMARKS: There are locked gates on the Q-1200 and at Phelan Pit - contact the Olympic Region Dispatch Center at 360-374-2820 to obtain a AA-1 key.

TIMBER SALE MAP

SALE NAME: GUPPY
AGREEMENT #: 30-096783
TOWNSHIP(S): T24R11W
TRUST(S): Common School and Indemnity (3), University - Transferred (5)

REGION: Olympic Region
COUNTY(S): Jefferson
ELEVATION RGE: 520'-840'



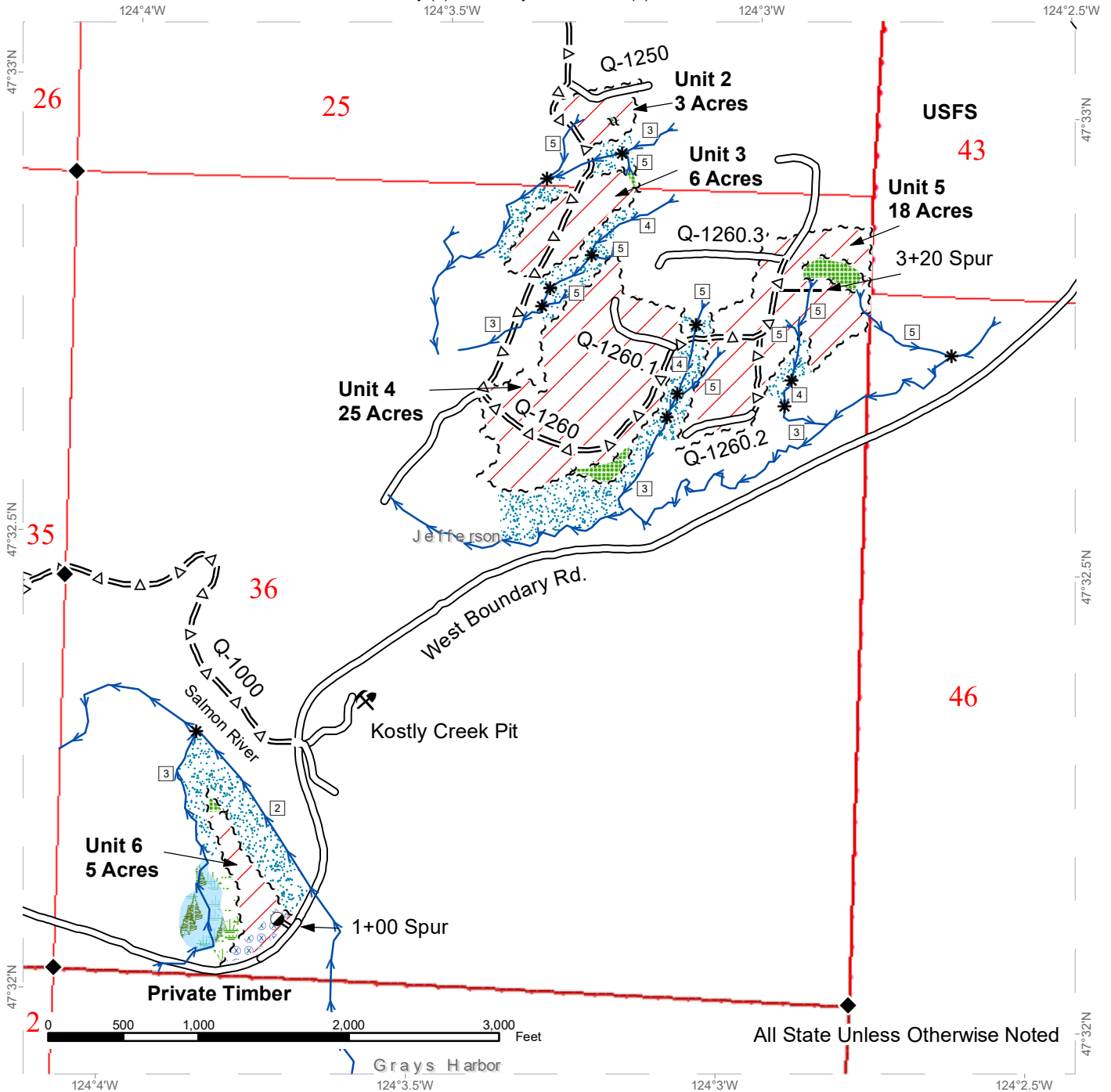
Stream Type	Existing Road	Sale Boundary Tags
Stream Type Break	Optional Construction	Leave Tree Tags
Streams	Optional Prehaul Maintenance	Hazard Abatement
Bridge	Leave Tree Area	Timing Restrictions
Gate	Riparian Management Zone	Variable Retention Harvest
Landing	Wetland	Survey Monument
Pit	Wetland Management Zone	



TIMBER SALE MAP

SALE NAME: GUPPY
AGREEMENT #: 30-096783
TOWNSHIP(S): T24R11W
TRUST(S): Common School and Indemnity (3), University - Transferred (5)

REGION: Olympic Region
COUNTY(S): Jefferson
ELEVATION RGE: 520'-840'



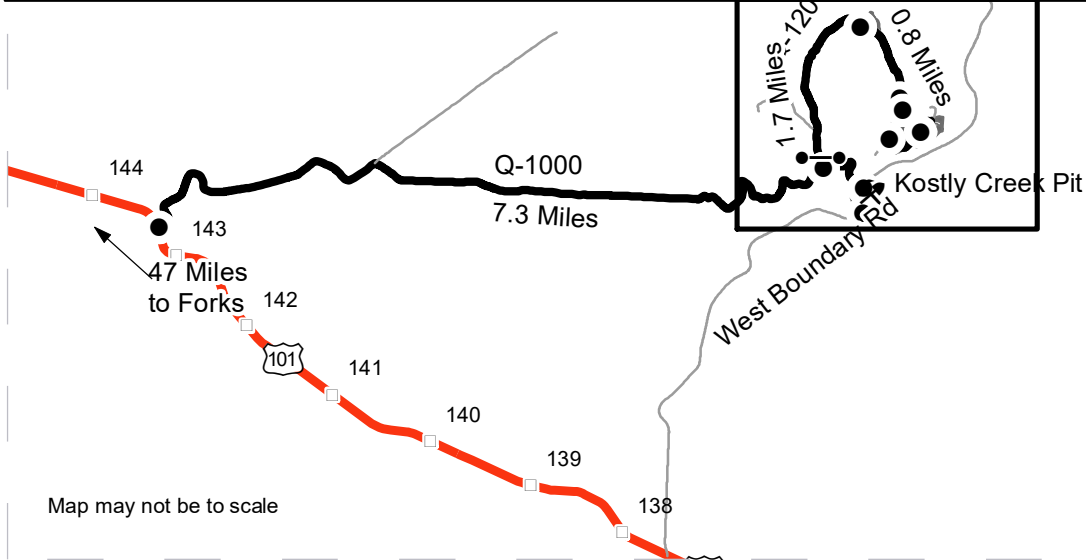
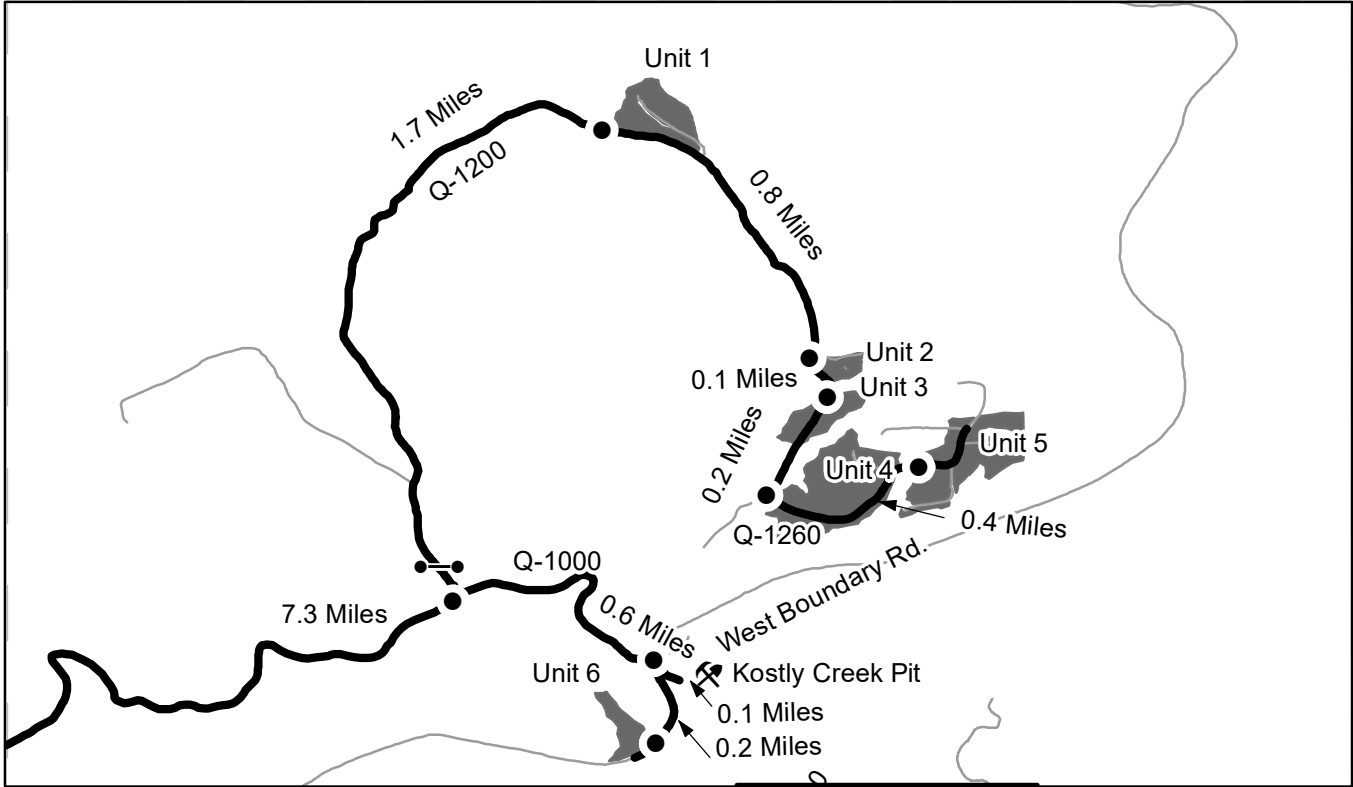
Stream Type	Existing Road	Sale Boundary Tags
Stream Type Break	Optional Construction	Leave Tree Tags
Streams	Optional Prehaul Maintenance	Hazard Abatement
Bridge	Leave Tree Area	Timing Restrictions
Gate	Riparian Management Zone	Variable Retention Harvest
Landing	Wetland	Survey Monument
Pit	Wetland Management Zone	



DRIVING MAP

SALE NAME: GUPPY
AGREEMENT#: 30-096783
TOWNSHIP(S): T24R11W
TRUST(S): Common School and Indemnity (3), University - Transferred (5)

REGION: Olympic Region
COUNTY(S): Jefferson
ELEVATION RGE: 520'-840'



Map may not be to scale

- Timber Sale Unit
- Haul Route
- Other Road
- Milepost Markers
- Distance Indicator
- Gate
- Rock Pit

Unit 1: From Forks, drive 47 miles south on US 101 and turn left onto the Q-1000. Continue for 7.3 Miles and turn left onto the Q-1200. Continue for 1.7 miles and Unit 1 will be on the left.
Unit 2: From Unit 1 continue on the Q-1200 for 0.8 miles and Unit 2 will be on the left.
Unit 3: From Unit 2 continue on the Q-1200 for 0.1 miles and Unit 3 will be on the left.
Unit 4: From Unit 3 continue on the Q-1200 for 0.2 miles to the junction of the Q-1260 where Unit 4 will be on the left.
Unit 5: Continue on the Q-1260 for 0.4 miles to the Unit 5.
Unit 6: From the Q-1000 and Q-1200 junction continue east on the Q-1000 for 0.6 miles and turn right onto West Boundary Rd. Continue for 0.2 miles and Unit 6 will be on the right.
Kostly Creek Pit: From the Q-1000 and West Boundary Rd. junction, continue on the Q-1000 for 0.1 miles to the pit.





TIMBER NOTICE OF SALE

SALE NAME: CARR RD FIRE SALVAGE

AGREEMENT NO: 30-96859

AUCTION: July 26, 2018 starting at 10:00 a.m., COUNTY: Lewis
Pacific Cascade Region Office, Castle Rock, WA

SALE LOCATION: Sale located approximately 9 miles east of Randle, Washington

PRODUCTS SOLD AND SALE AREA: All timber, except leave trees marked with blue pain and snags; bounded by the following: white "Timber Sale Boundary" tags with pink flagging and reprod on adjacent private property on part(s) of Sections 10 all in Township 12 North, Range 8 East, W.M., containing 4 acres, more or less.

CERTIFICATION: This sale is certified under the Sustainable Forestry Initiative® program Standard (cert no: BV-SFIS-US09000572)

ESTIMATED SALE VOLUMES AND QUALITY:

Table with columns: Species, Avg DBH, Ring Count, Total MBF, and MBF by Grade (1P, 2P, 3P, SM, 1S, 2S, 3S, 4S, UT). Rows include Douglas fir, Red cedar, Maple, Hemlock, and Sale Total.

MINIMUM BID: \$28,000.00 BID METHOD: Sealed Bids

PERFORMANCE SECURITY: \$5,600.00 SALE TYPE: Lump Sum

EXPIRATION DATE: October 31, 2018 ALLOCATION: Export Restricted

BID DEPOSIT: \$2,800.00 or Bid Bond. Said deposit shall constitute an opening bid at the appraised price.

HARVEST METHOD: Shovel and Track skidder. Harvesting activities are estimated to be 100% ground-based harvesting. Ground-based harvesting equipment shall be restricted to slopes of 40% and less, and during dry soil conditions. See clauses H-140 and H-141 for further harvest requirements. A detailed felling and yarding plan shall be required prior to any harvest activities and approved in writing by the Contract Administrator.

ROADS: 2.13 stations of required construction. 9.61 stations of post-haul maintenance. Rock used in accordance with the quantities in the ROCK LIST for this sale may be obtained from any commercial pit at the Purchaser's expense. Rock Sources will be subject to written approval by the Contract Administrator before their use.

ACREAGE DETERMINATION

CRUISE METHOD: The sale acres were determined by GPS. The sale area was cruised using a variable plot cruise method.



TIMBER NOTICE OF SALE

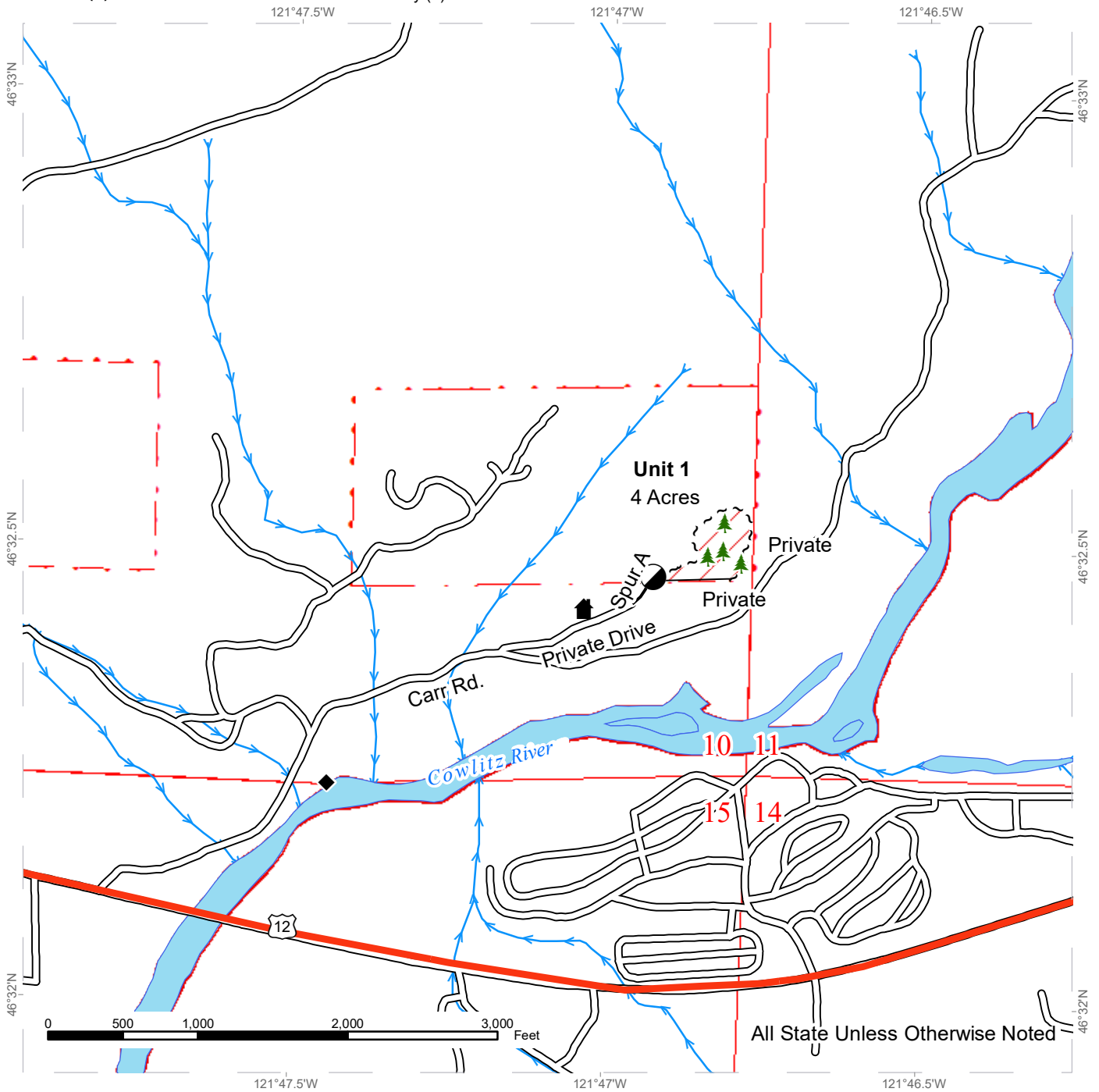
FEES: \$1,545.00 is due on day of sale. \$9.00 per MBF is due upon removal. These are in addition to the bid price.

SPECIAL REMARKS: This sale has approximately 38 MBF of high quality DF 2 sawlog and 3 MBF of high quality DF 3 sawlog. Remove all stumps marked with orange paint located on the adjacent landowner's property, within and near the Right-of-Way, and place them on State land as directed by the Contract Administrator. Any equipment operations, including post-harvest clean up and road maintenance, must be completed within 42 days after the equipment arrives on site. During the first 21 days after the arrival of equipment, operations are allowed 7 days a week and the next 21 days operations are only allowed Monday through Thursday. Purchasers may drive on the private landowner's driveway to look at the haul route, but may not park in his driveway to cruise the unit .

TIMBER SALE MAP

SALE NAME: CARR RD FIRE SALVAGE
AGREEMENT #: 30-096859
TOWNSHIP(S): T12R8E
TRUST(S): Common School and Indemnity (3)

REGION: Pacific Cascade Region
COUNTY(S): Lewis
ELEVATION RGE: 1040-1200



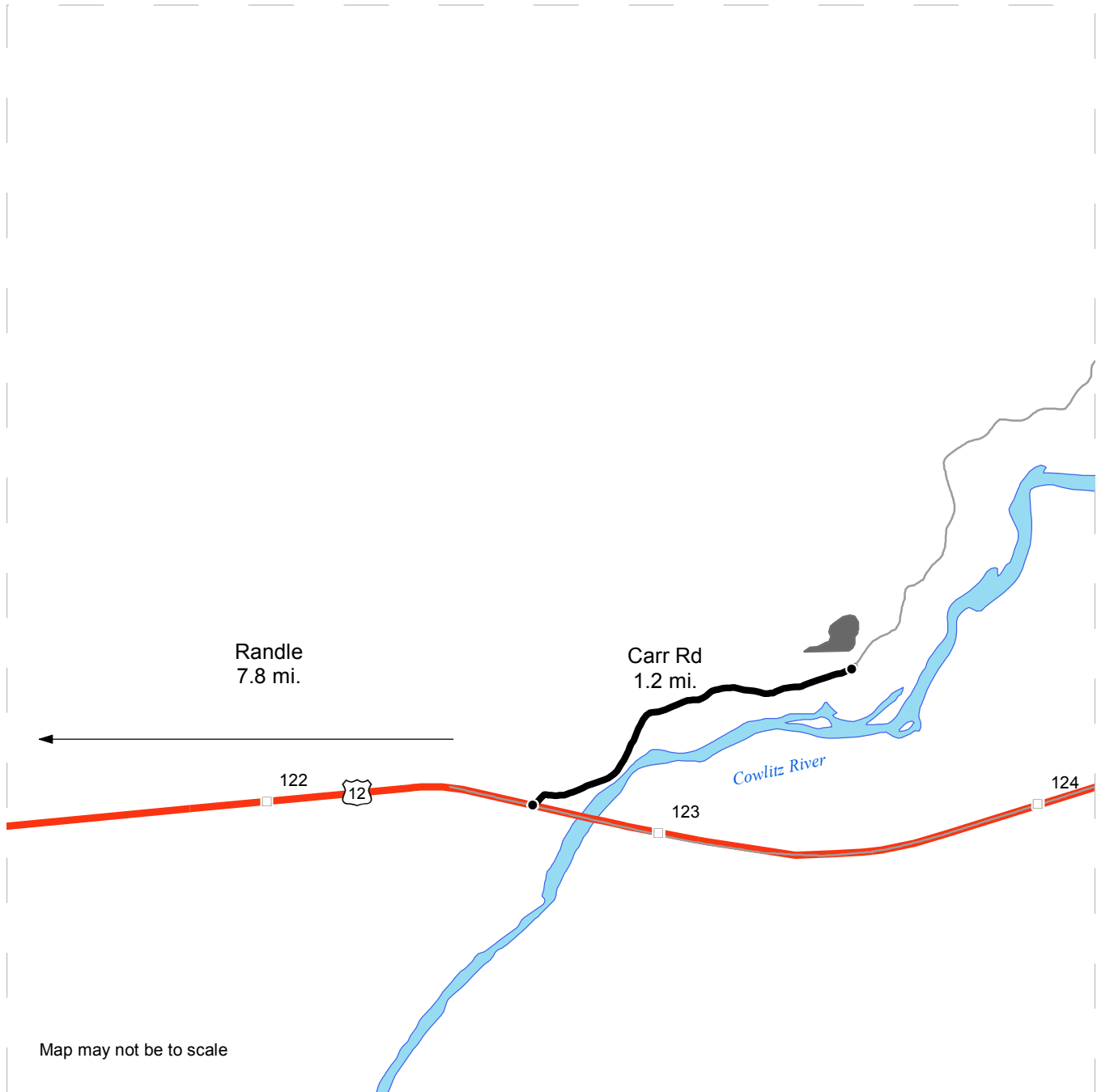
Variable Retention Harvest	Existing Roads	Streams
Sale Boundary Tags	Optional Construction	Survey Monument
Timber Type Change		Designated Landing
		Individual Leave Trees
		Structure








DRIVING MAP

SALE NAME: CARR RD FIRE SALVAGE
AGREEMENT#: None
TOWNSHIP(S): T12R8E
TRUST(S): Common School and Indemnity (3)

REGION: Pacific Cascade Region
COUNTY(S): Lewis
ELEVATION RGE: 1040-1200



Map may not be to scale

-  Timber Sale Unit
-  Haul Route
-  Other Road
-  Milepost Markers
-  Distance Indicator

DRIVING DIRECTIONS:

From Highway 12 at Randle (at the Hwy 12/SR 131 junction):

Drive east on Highway 12 for approximately 7.8 miles.

Turn left onto Carr Rd.

Continue on Carr Rd approximately 1.2 miles to a parking area in the right of way of Carr Rd on the right.

Purchaser may drive on private driveway to look at the haul route, but may not park in the driveway to cruise the unit?





TIMBER NOTICE OF SALE

SALE NAME: POTATO SKINS SORTS

AGREEMENT NO: 30-97184 - 30-97193

AUCTION: July 24, 2018 starting at 10:00 a.m.
Northeast Region Office, Colville, WA

COUNTY: Spokane

SALE LOCATION: Sale located approximately 12 miles east of Elk, WA.

**PRODUCTS SOLD
AND SALE AREA:**

All timber except for leave trees banded with blue paint and leave trees as described in Schedule A bounded by white timber sale boundary tags in Units 1, 2, 3, 4, 5 and bounded by blue special management unit tags in Unit 6; all timber bounded by orange right of way tags meeting the specifications described below; on parts of Section 2 in Township 28 North, Range 45 East, Sections 30, and 31 all in Township 29 North, Range 46 East, Sections 25, 35, and 36 all in Township 29 North, Range 45 East W.M., containing 358 acres, more or less.

MINIMUM BID AND ESTIMATED LOG VOLUMES:

Agreement #	Sort #	Species and Sort Specifications	Average Log Length	Estimated Volume		Tons Per MBF	Minimum Bid Delivered Prices		Total Appraised Value	Bid Deposit
				Mbf	Tons		\$/mbf	\$/Ton		
97184	01	DF/WL 7-10" dib	N/A	1616	9696	6		\$71.00	\$688,416.00	\$68,841.60
97185	02	DF/WL 11"+ dib	N/A	1159	5795	5		\$85.00	\$492,575.00	\$49,257.50
97186	03	LP/GF/WH/WP & non-chuck DF/WL 7-10" dib	N/A	1355	8400	6.2		\$65.00	\$546,000.00	\$54,600.00
97187	04	LP/GF/WH/WP & non-chuck DF/WL 11"+ dib	N/A	1060	5618	5.3		\$75.00	\$421,350.00	\$42,135.00
97188	05	PP 6-10" dib	N/A	67	502	7.5		\$44.00	\$22,088.00	\$2,208.80
97189	06	PP 11"+ dib	N/A	28	154	5.5		\$65.00	\$10,010.00	\$1,001.00
97190	07	All conifer species except PP & WRC 5-6" dib	N/A	1292	8268	6.4		\$45.00	\$372,060.00	\$37,206.00
97191	08	WRC 5"+ dib	N/A	65	286	4.4		\$205.00	\$58,630.00	\$5,863.00
97192	09	All conifer species except WRC 2"+ utility	N/A	46	414	9		\$25.00	\$10,350.00	\$1,035.00
97193	10	Dead DF/WL/LP 5"+ dib utility	N/A	248	744	3		\$89.00	\$66,216.00	\$6,621.60

Totals: **6936 39877** **\$2,687,695.00**



TIMBER NOTICE OF SALE

CERTIFICATION: This sale is certified under the Sustainable Forestry Initiative® program Standard (cert no: BV-SFIS-US09000572)

BID METHOD: Sealed Bids

UNIT OF MEASURE: Tonnage Scale

EXPIRATION DATE: February 28, 2019

ALLOCATION: Export Restricted

PAYMENT

SECURITY: To be determined by the State as described in Clause P-045.2 of the Purchaser's Contract.

BIDDING

PROCEDURES:

A separate sealed bid and envelope must be submitted for each log sort. Prospective Purchasers may bid on any or all log sorts. On the day of sale the Purchaser must bring their bid deposit up to 10% of their total bid price. Complete bidding procedures and auction information may be obtained from the Northeast Region Office in Colville WA. Phone number (509)684-7474.

TIMBER EXCISE

TAX:

Purchaser must pay the forest excise taxes associated with the log sorts delivered to them. The tax rate for this sale is 4.2 %. Taxable Stumpage = Total Delivered Value – (Harvest Cost + Estimated Haul Cost + ARRF). For more information contact the Department of Revenue, Forest Tax Section at 1-800-548-8829.

Use the following rates for estimating taxable stumpage:

Harvest Cost = \$32.00 per Ton for sorts 01, 02, 03, 04, 05, 06, 07, 08 and 10 and \$13.00 per Ton for sort 09.

Hauling Services Payment Rate per Ton
= (Base Rate + Mileage Rate) x (Contractor's hauling bid factor)

Base Rate = \$2.35 per ton

Mileage Rate = ((\$0.16 x C miles) + (\$0.11 x A miles)) x Fuel Index Factor

ARRF does not apply.

Note: To calculate ARRF rates per ton use the tons\mbf conversion factor in the table above.

CONFIRMATION: Each sort is subject to confirmation following auction. Sorts will not be confirmed until at least 10 days after auction. Final contract award is contingent upon the State's haul cost analysis. Actual haul route may vary and is subject to change at the State's discretion.

SPECIAL REMARKS: The successful Purchaser(s) will be required to purchase logs from the sale area upon delivery to their location specified in the bid submitted. Logs will be delivered to the Purchaser's delivery location by the State's contract harvester. Purchaser is responsible for weighing and scaling costs. All tonnage loads will be weighed and all mbf loads will be scaled at State approved locations. The State reserves the right to determine where logs are authorized to be scaled and weighed.



TIMBER NOTICE OF SALE

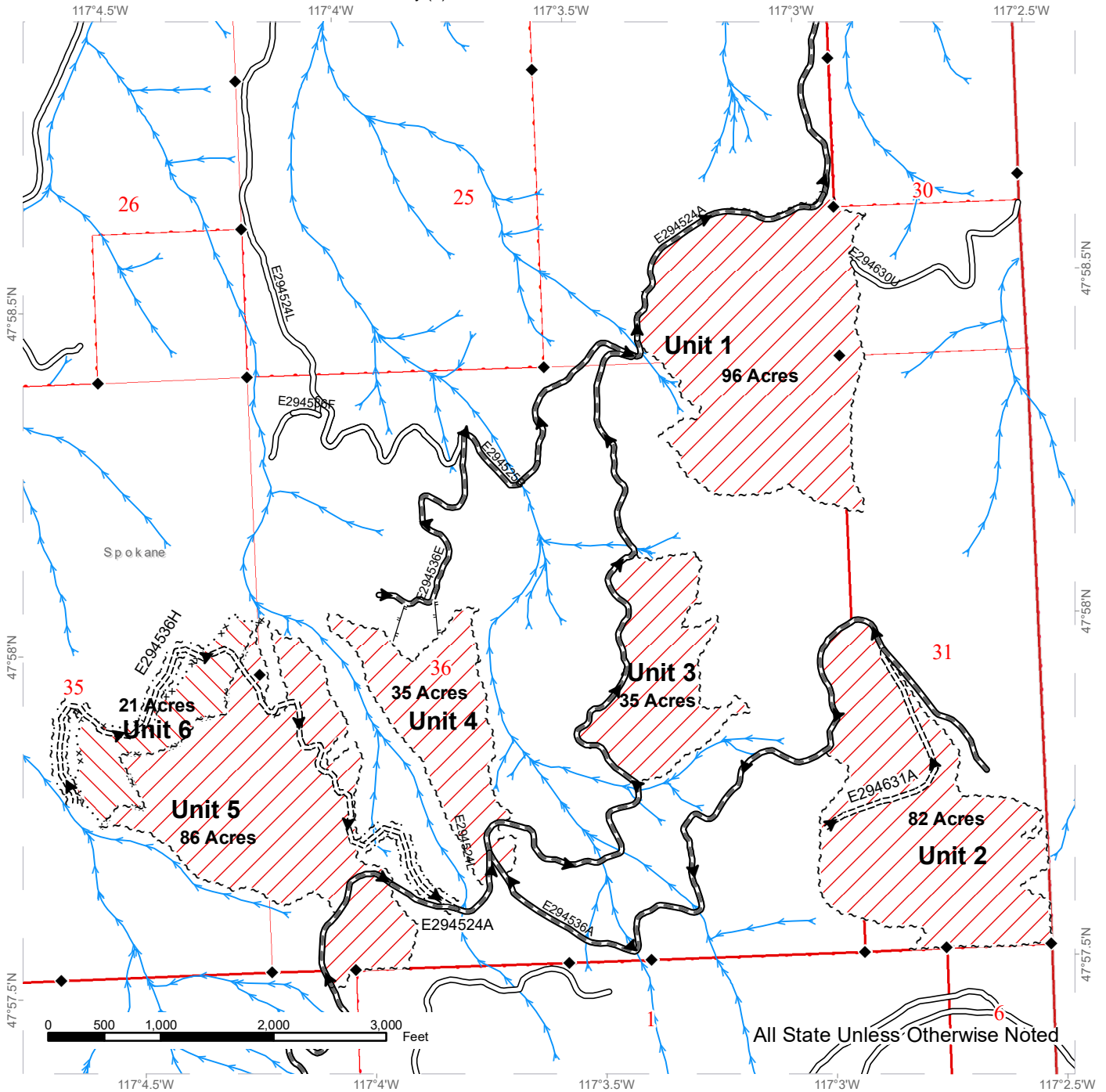
A locked gates restrict access to the sale. Contact the Northeast Region Office at (509) 684-7474 for access

For more information regarding this log sort sale visit our web site:
<http://www.dnr.wa.gov/programs-and-services/product-sales-and-leasing/timber-sales/timber-auction-packets>. If you have questions call Matt Ugladea at the Northeast Region Office at (509)680-8517 or Steve Teitzel at the Product Sales and Leasing Division Office in Olympia at (360)902-1741.

TIMBER SALE MAP

SALE NAME: POTATO SKINS
AGREEMENT #: 30-096892
TOWNSHIP(S): T28R45E, T29R45E, T29R46E
TRUST(S): Common School and Indemnity (3)

REGION: Northeast Region
COUNTY(S): Spokane
ELEVATION RGE: 2871-4151



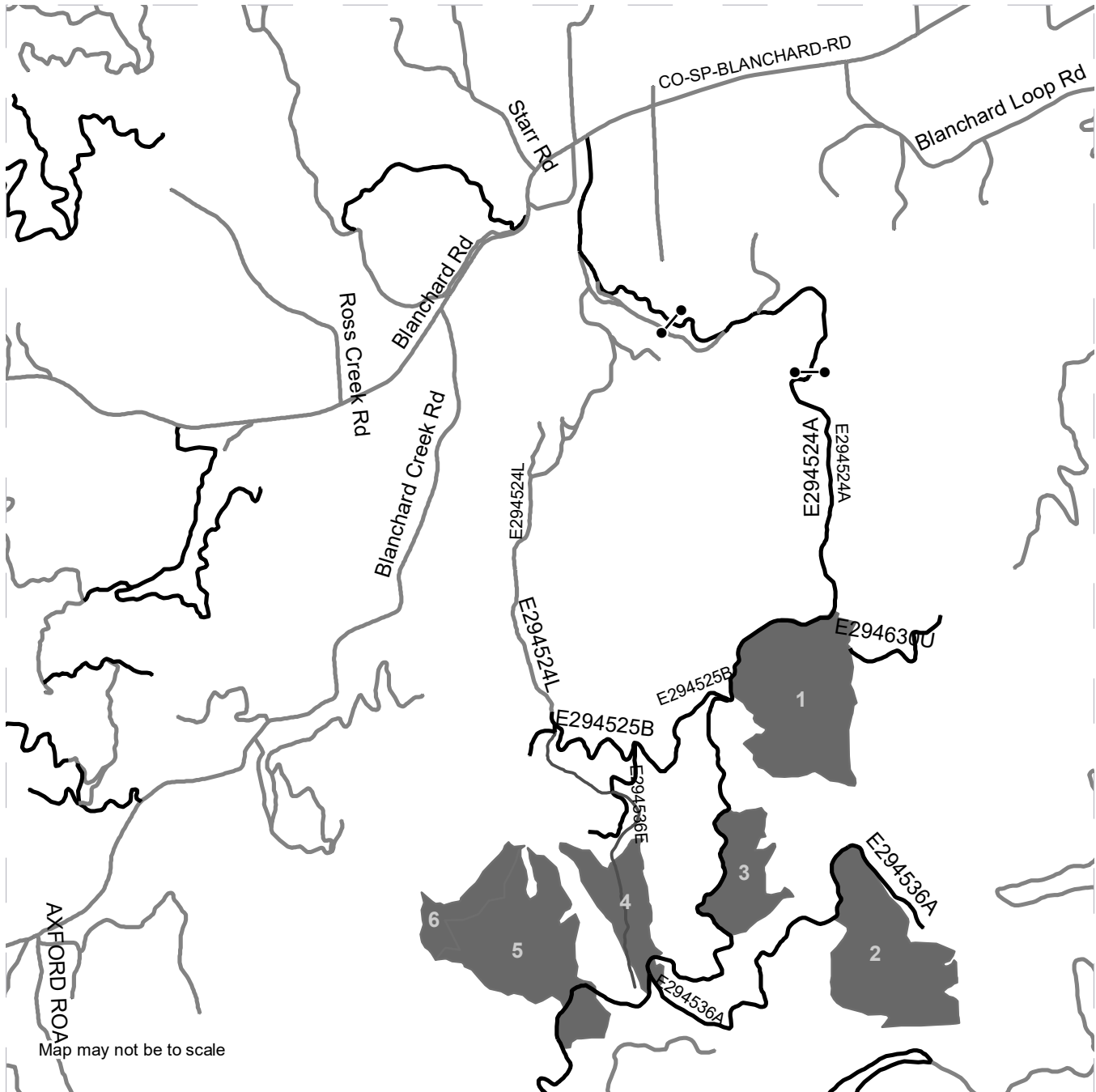
Variable Retention Harvest	Existing Roads	Streams
Shelterwood Intermediate	Required Pre-Haul Maintenance	Survey Monument
Sale Boundary Tags	Required Construction	Haul Route
Special Mgmt Area (Blue Tags)	Designated Skid Trail	
Right of Way Tags = 3 Acres		



DRIVING MAP

SALE NAME: POTATO SKINS
AGREEMENT#: 30-096892
TOWNSHIP(S): T28R45E, T29R45E, T29R46E
TRUST(S): Common School and Indemnity (3)

REGION: Northeast Region
COUNTY(S): Spokane
ELEVATION RGE: 2871-4151



Timber Sale Unit
 Other Road
 Gate (Locked)

DRIVING DIRECTIONS:

From Deer Park Washington:
 Head east for 5.6 miles on E Crawford Street/Deer Park-Milan Rd to the Junction of Hwy 2 and Deer Park Milan road. Cross Highway 2 and continue on E Deer Park-Milan road for 1 mile. Turn North on N. Milan Road. Continue on North Milan Road for 4 miles. Turn East onto N. Elk Chatteroy Road. Continue on N. Elk Chatteroy road for 2.1 Miles. Turn East on E Blanchard road and Continue on E Blanchard road for 10.1 Miles to Departure Lane. Turn south onto Departure Lane to access the project area. 1.3 miles from Blanchard County Road to the first locked gate





TIMBER NOTICE OF SALE

SALE NAME: TWO FOR KIP

AGREEMENT NO: 30-93616

AUCTION: July 25, 2018 starting at 10:00 a.m., COUNTY: Whatcom Northwest Region Office, Sedro Woolley, WA

SALE LOCATION: Sale located approximately 3 miles west of Glacier, WA.

PRODUCTS SOLD AND SALE AREA:

All timber bounded by white timber sale boundary tags, adjacent young stands and the WA-ML, WA-15 and WA-26 roads, except cedar salvage (cedar snags, preexisting dead and down cedar trees and cedar logs), trees marked with blue paint on the bole and root collar and forest products tagged out by yellow leave tree area tags in Unit #1.

All timber bounded by orange right of way tags, except that title to the timber within the right of way tags is not conveyed to the Purchaser unless the road segment is actually constructed.

The above described products on part(s) of Sections 2, 10 and 11 all in Township 39 North, Range 6 East, W.M., containing 107 acres, more or less.

CERTIFICATION: This sale is certified under the Sustainable Forestry Initiative® program Standard (cert no: BV-SFIS-US09000572)

ESTIMATED SALE VOLUMES AND QUALITY:

Table with columns: Species, Avg DBH, Ring Count, Total MBF, and MBF by Grade (1P, 2P, 3P, SM, 1S, 2S, 3S, 4S, UT). Rows include Hemlock, Silver fir, Douglas fir, Red cedar, Red alder, and Sale Total.

MINIMUM BID: \$629,000.00 BID METHOD: Sealed Bids

PERFORMANCE SECURITY: \$100,000.00 SALE TYPE: Lump Sum

EXPIRATION DATE: March 31, 2020 ALLOCATION: Export Restricted

BID DEPOSIT: \$62,900.00 or Bid Bond. Said deposit shall constitute an opening bid at the appraised price.

HARVEST METHOD: Cable OR tethered equipment (as approved in writing by the Contract Administrator); cable or shovel on sustained slopes 35% or less. A self-leveling shovel and/or self-leveling harvester may operate on sustained slopes up to 50%, with prior approval from the Contract Administrator. Falling and Yarding will not be permitted from November 1 to March 31 unless authorized in writing by the Contract Administrator (THIS PERTAINS TO GROUND-BASED EQUIPMENT ONLY) to reduce soil damage and erosion.



TIMBER NOTICE OF SALE

ROADS: 87.42 stations of required construction. 45.20 stations of optional construction. 10.34 stations of road to be abandoned if built. 312.97 stations of required/optional pre-haul maintenance.

Rock may be obtained from the following sources on State land at no charge to the Purchaser: S-1100 Pit at station 184+50 of the NF-ML Road. Red Mountain Pit at station 20+53 of the RM-23 Road. Nolte Pit at station 116+45 of the BK-06 Road.

Development of existing rock sources will involve drilling, shooting, and processing rock to generate riprap, 1 ½-inch-minus crushed surfacing rock and 3-inch-minus ballast.

An estimated total quantity of rock needed for this proposal: 254 cubic yards of riprap, 2,417 cubic yards of surfacing rock and 7,000 cubic yards of ballast rock.

Additional restrictions apply, see Remarks section below.

Road work and the hauling of rock will not be permitted from November 1 to March 31 unless authorized in writing by the Contract Administrator to reduce soil damage and siltation. The hauling of forest products will not be permitted from November 1 to March 31 unless authorized in writing by the Contract Administrator to reduce soil damage and siltation.

ACREAGE DETERMINATION

CRUISE METHOD: Acres determined by GPS traverse. 114.3 acres gross. 4.4 acres deducted for green tree retention clumps and 2.6 acres deducted for existing roads. 107.3 acres net. Cruised using variable plot method. Expansion factor used is 40.00 and 54.45. Sighting height is 4.5 feet. A total of 71 plots were taken.

Shapefiles of units are available upon request.

FEES: \$45,777.25 is due on day of sale. \$9.00 per MBF is due upon removal. These are in addition to the bid price.

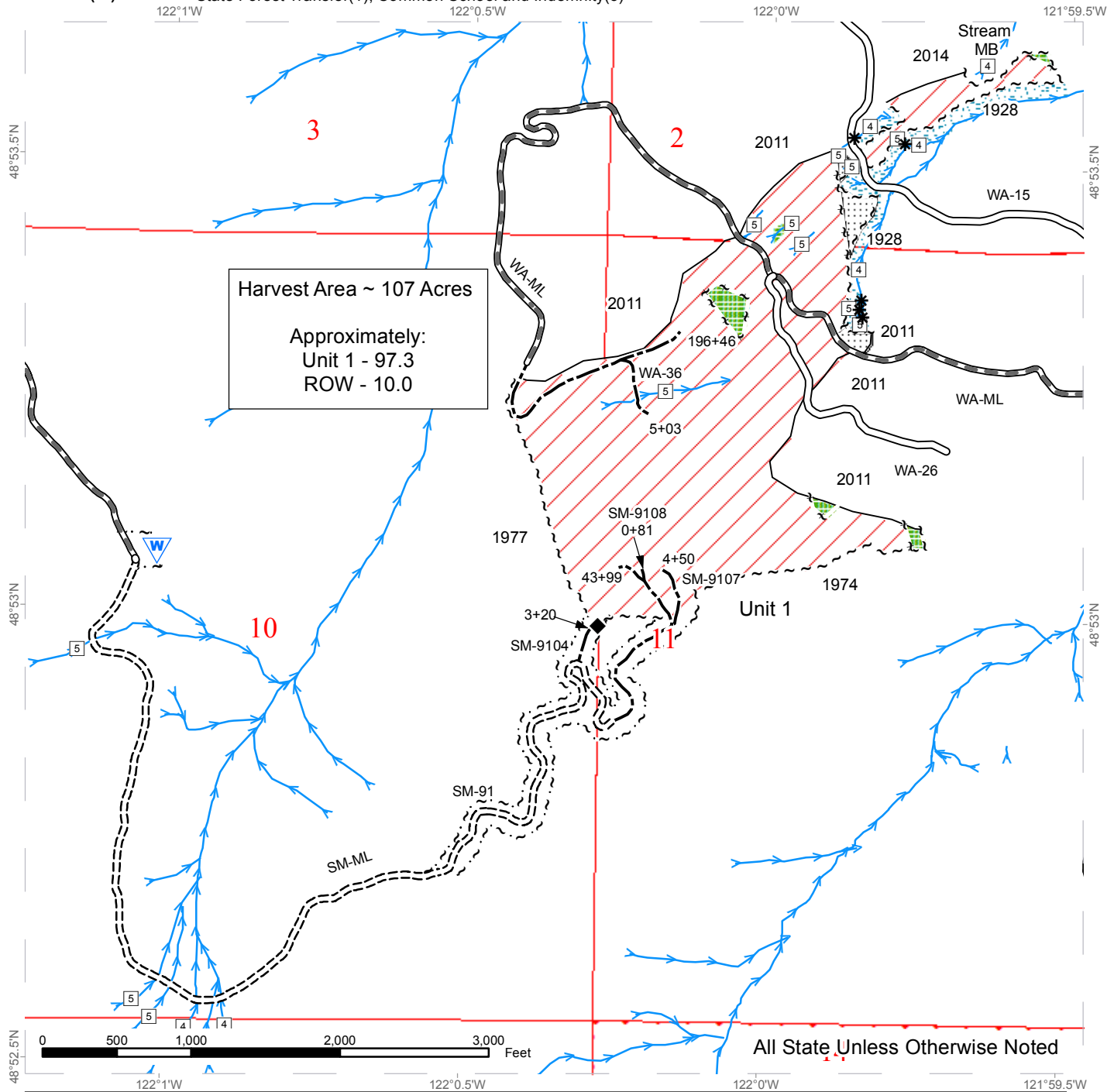
SPECIAL REMARKS:

1. Within the S-1100 rock pit, no explosives may be used within the 0.5 miles of the Bear Creek, Maple Falls and Hatchery Creek Communal Eagle Roost sites from November 15 to March 15.
2. Wildlife timing restrictions are: Operation of heavy machinery associated with road work on the NF-ML Road (Stations 178+96 to 215+16) and S-1100 rock pit activities shall be prohibited from one hour before official sunrise to two hours after official sunrise and one hour before official sunset to one hour after official sunset from April 1 to August 31.
3. Intermediate supports may be necessary.

TIMBER SALE MAP

SALE NAME: TWO FOR KIP
AGREEMENT #: 93616
TOWNSHIP(S): T39R06E
TRUST(S): State Forest Transfer(1), Common School and Indemnity(3)

REGION: Northwest Region
COUNTY(S): WHATCOM
ELEVATION RGE: 1490'-3675'

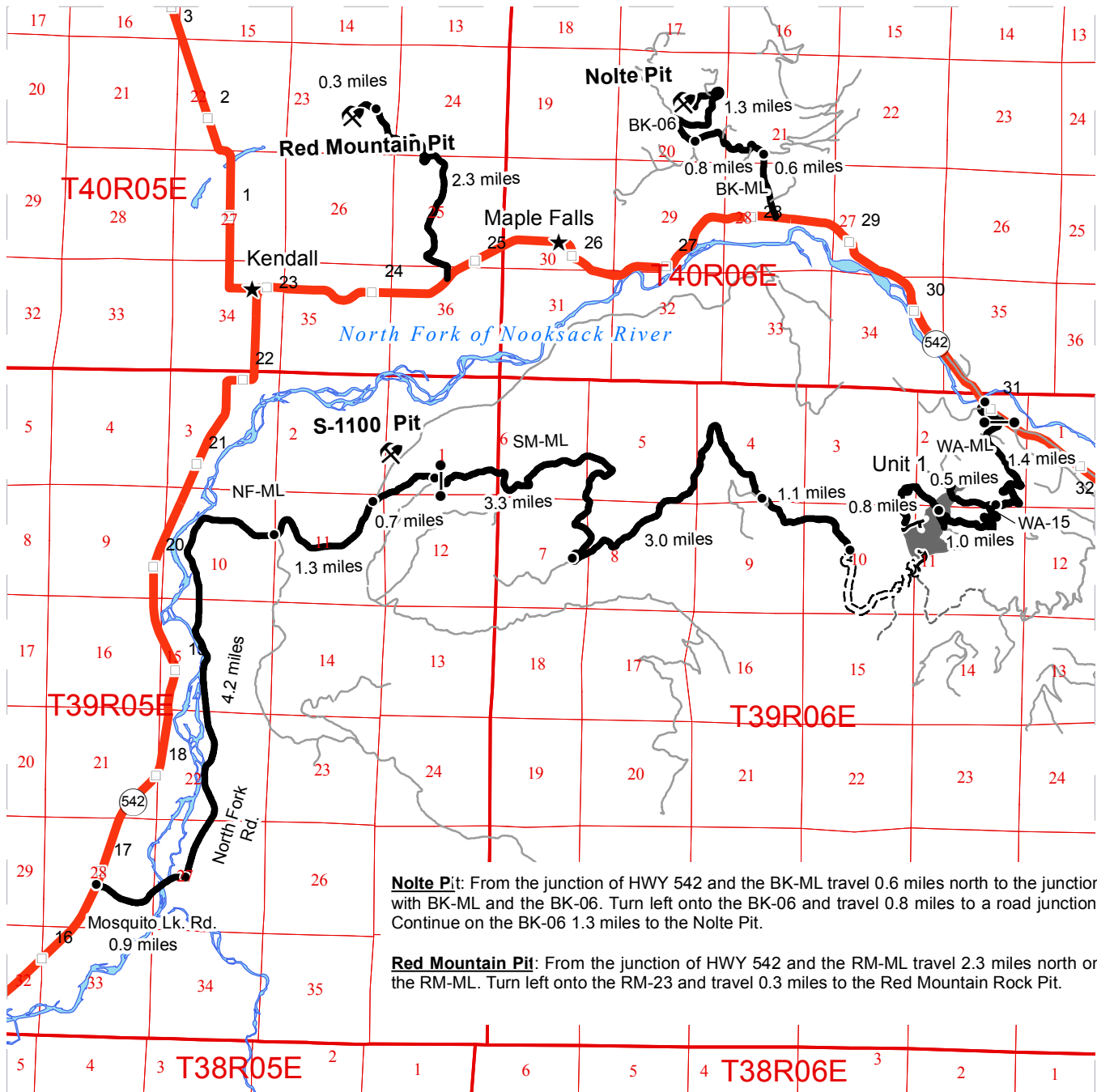


	Variable Retention Harvest		Existing Roads		Sale Boundary Tags
	Leave Tree Area		Required Pre-Haul Maintenance		Leave Tree Tags
	Non-Tradeable Leave Tree Area		Required Construction		Right of Way Tags
	Riparian Mgt Zone		Optional Construction		Timber Type Change
	Waste Area		Streams		Stream Type
					Stream Type Break

DRIVING MAP

SALE NAME: TWO FOR KIP
AGREEMENT#: 93616
TOWNSHIP(S): T39R06E
TRUST(S): State Forest Transfer(1), Common School and Indemnity(3)

REGION: Northwest Region
COUNTY(S): WHATCOM
ELEVATION RGE: 1490'-3675'



Nolte Pit: From the junction of HWY 542 and the BK-ML travel 0.6 miles north to the junction with BK-ML and the BK-06. Turn left onto the BK-06 and travel 0.8 miles to a road junction. Continue on the BK-06 1.3 miles to the Nolte Pit.

Red Mountain Pit: From the junction of HWY 542 and the RM-ML travel 2.3 miles north on the RM-ML. Turn left onto the RM-23 and travel 0.3 miles to the Red Mountain Rock Pit.

- Timber Sale Unit
- Highways
- Haul Route
- Other Route
- Required Pre-Haul Maintenance
- Required Construction
- Optional Construction
- Old Grades/Trails
- Milepost Markers
- Distance Indicator
- Town
- Gate
- Existing Rock Pit

DRIVING DIRECTIONS:

Unit 1 from SM-ML: From the junction of HWY 542 and Mosquito Lk. Rd. travel east along Mosquito Lk. Rd. for 0.9 miles to the North Fork Rd. Turn left and travel 4.2 miles. At the Y turn left to continue on the NF-ML and travel 1.3 miles. Turn right onto the SM-ML and travel 0.7 miles to the junction with the RH-ML. Continue on the SM-ML through the gate and travel 3.3 miles to the switchback and road junction. Continue 3.0 miles on the SM-ML to a road junction. Continue 0.8 miles to the end of the SM-ML where road construction to Unit 1 will begin.

Unit 1 from WA-ML: From the junction of HWY 542 and Cornell Creek Road just after the North Fork Bridge, travel on Cornell Creek Road 0.3 miles to the start of the WA-ML. Travel 1.4 miles on the WA-ML to the junction with WA-15. Continue 1.0 miles on the WA-ML to the middle of unit 1 and follow WA-15 for 0.5 miles to the lower portion of Unit 1.



**State of Washington
Department of Natural Resources**

SEALED BID FORM

Sale Name _____ Agreement Number _____

_____ hereby submits the following bid for timber.
(Print full, legal company name)

(Street address, City, State, Zip Code)

(Phone Number)

Lump Sum Bid (Not Including Fees) \$ _____ **For Total Sale**

Weight Scale Sale Bid (Not Including Fees) \$ _____ / **Ton**

Scribner Scale Sale Bid (Not Including Fees) \$ _____ / **MBF For Biddable Species**

BID DEPOSIT

Bid Deposit Amount: \$ _____

Bid Deposit Type:

- Cash, certified check, cashiers check, or money order
- Per Sale Bid Bond
- Statewide Bid Bond, Number _____

Within 30 days of confirmation date the successful bidder agrees to furnish Performance Security acceptable to the State in the amount specified on the Notice of Sale. Performance Security must guarantee performance of all provisions of the contract and payment of any damages caused by operations under the contract or resulting from the successful bidders noncompliance with any rule or law.

Bidder's Warranty and Bid Signature

By signing and submitting this bid as an offer to purchase forest products from the State, the Bidder hereby warrants to the State that they have had an opportunity to fully inspect the sale area and the forest products being sold. Bidder further warrants to the State that they enter this bid based upon their own judgments of the value of the forest products, formed after their own examination and inspection of both the timber sale area and the forest products being sold. Bidder also warrants to the State that they enter this bid without any reliance upon the volume estimates, acreage, appraisals, pre-bid documentation, or any other representation by the Washington State Department of Natural Resources.

_____ Date _____
(Signature of Authorized Representative submitting this bid)

(Print name and title of Authorized Representative submitting this bid)

Note: all sales are subject to confirmation by the Commissioner of Public Lands (Refer 79.15.120)

Instructions For Completing Sealed Bid Form

All bids submitted for the purchase of forest products being sold by the Washington State Department of Natural Resources must have an original signature on behalf of the person or entity submitting the bid, and must be on the form provided in this booklet or a photocopy thereof. The DNR will not accept bids that are not signed, and will not accept bids that are not on the current, approved bid form. All appropriate blanks on bid form must be completed including the bid bond number if the bidder is relying upon a bid bond for bid deposit.

For more specific information, contact the appropriate region office.

In-Person Bids

- A. Sealed bids must be in auction box before 10:00 a.m. on the day of auction at the location specified in the Timber Notice of Sale.
 - B. Sealed bids must be submitted in an envelope with the name of the sale, the bidder's name and the contract number clearly written on the outside of the envelope. The full legal name and business address of the bidder must be inserted where indicated on the form, and must be on the bid bond and timber sale contract. The bid form must be signed by an authorized representative. When a bidder has more than one person authorized to bid, documentation of those persons with signature authority for bidding must accompany the bid or be on file at the region office. Sealed bid envelopes are available at all region offices. One bid per envelope.
 - C. Sealed bid envelopes **must** contain a completed bid form and a bid deposit.
 - D. Sealed bid envelopes **may** contain a check for the Initial Deposit amount and a check for fees.
-

Mailed Bids

- A. Bids that are mailed are required to have printed on the outside: "DO NOT OPEN UNTIL SALE DATE. SEALED BID ENCLOSED". The sealed bid envelope(s) will be enclosed inside the mailed-in envelope. Mailed bids must be submitted in an envelope with the name of the sale, the bidder's name and the agreement number clearly written on the outside of the envelope. The full legal name and business address of the bidder must be inserted where indicated on the form, and must be the same on the bid bond and timber sale contract. The Sealed Bid Form must be signed by an authorized representative. When a bidder has more than one person authorized to bid, documentation of those persons with signature authority for bidding must accompany the bid or be on file at the region office. Mail-in envelopes are available at all region offices. One bid per mailed-in envelope.
 - B. Bids that are mailed will be accepted up to 4:30 p.m. the last business day before the auction by the region office in which the sale is located. Bidders assume the risk for the method of delivery. The DNR assumes no responsibility for any delays caused by any delivery service.
 - C. Sealed bid envelopes **must** contain a completed bid form and a bid deposit.
 - D. Sealed bid envelopes **may** contain a check for the Initial Deposit amount and a check for fees.
-

Initial Deposit:

Lump Sum Sales - Initial Deposit must equal 10% of the total bid submitted.
(25% if the bidder is a defaulter as defined under WAC 332-140-300)

Weight Scale Sales - Initial Deposit must equal 10% of the bid per ton multiplied by the total sale estimated tonnage. (25% if the bidder is a defaulter as defined under WAC 332-140-300)

Scribner MBF Scale Sales - Initial Deposit must equal 10% of the bid per MBF multiplied by the total sale MBF. (25% if the bidder is a defaulter as defined under WAC 332-140-300)

**State of Washington
Department of Natural resources**

STATEWIDE BID BOND

Bond Number _____

_____ of _____,
(Principal's Name) (City, State)

hereinafter called PRINCIPAL, and _____ hereinafter called
SURETY,

a corporation organized under the laws of the State of _____, and authorized to transact surety business in the State of Washington, as SURETY, are held and firmly bound jointly and severally to the State of Washington, Department of Natural Resources, hereinafter called the STATE, in the sum of \$150,000.00 Dollars, lawful money of the United States of America. The PRINCIPAL binds itself, its heirs, executors, administrators, successors, and assigns, and the SURETY binds itself, its successors, and assigns, all jointly and severally.

This bond shall be governed by the laws of the State of Washington. In the event of a lawsuit involving this bond, a venue shall be proper only in Thurston County Superior Court.

Signed, sealed and dated this _____ day of _____, _____ .
(month) (year)

This statewide bid bond may be used for bidding between the following dates:

Starting:

Ending:

It Is Hereby Understood and Agreed:

If PRINCIPAL is an apparent high bidder, PRINCIPAL shall before 4:30 p.m ., on day of sale, pay to the STATE the amount of the initial deposit in the form of a certified check, cashier's check, bank draft, cash or money order, then this agreement shall be void for the sale on which the payment is made; otherwise, it will remain in force.

SURETY will make payment to the STATE within ten days after demand by the STATE if the PRINCIPAL shall fail to make timely payment as described above.

The SURETY may cancel this bond by sending a written notice to the STATE, not less than forty-five days before a cancellation date; liability shall terminate as to acts or omissions of the PRINCIPAL that occur after the cancellation date.

The PRINCIPAL and the SURETY executed this bond on the date first mentioned.

Principal: (Above named)

Signature: _____

Name: _____

Title: _____

Address: _____

City: _____
State & Zip Code

Surety: (Above named)

Signature: _____

Name: _____

Title: _____

Address: _____

City: _____
State & Zip Code

Surety: (Local Office of Authorized agent)

Signature: _____

Name: _____

Title: _____

Address: _____

City: _____
State & Zip Code

Notary or Company Seal in Space Above

Instructions for Completing Timber Sale Statewide Bid Bond

- A. This form is authorized for use as bid guaranty to qualify for bidding on Washington State Department of Natural Resources timber sales.
- B. The Statewide Bid Bond may be used as bid guaranty on more than one timber sale.
- C. The full legal name and business address of the PRINCIPAL must be inserted where indicated and must be the same as will appear on the bidding record and timber sale contract. The bond must be signed by an authorized person. Additionally, the name must be typed or printed below the signature and title must be shown.
- D. The full legal name and business address of the SURETY must be inserted where indicated. The bond must be signed by an authorized person. Additionally, the name must be typed or printed below the signature and the title must be shown.
- E. If the SURETY does not have a Washington State office or resident agent, but is authorized to transact surety business in the State of Washington as SURETY, it may leave this signature block blank.
- F. This form must be received by the Department of Natural Resources, Product Sales & Leasing Division, PO BOX 47016, Olympia, Washington, 98504-7016, ten days in advance of the auction.
- G. **The State reserves the right to reject *incomplete or incorrect* bid bond forms, making such forms unacceptable as bid guaranty.**

**State of Washington
Department of Natural Resources**

Timber Sale Per Sale Bid Bond

Bond Number _____

_____ of _____, hereinafter called PRINCIPAL, and _____, hereinafter called SURETY, a corporation organized under the laws of the State of _____ and authorized to transact surety business in the State of Washington, as SURETY, are held and firmly bound jointly and severally to the State of Washington, Department of Natural Resources, hereinafter called the STATE, in the sum of \$ _____ Dollars, lawful money of the United States of America. The PRINCIPAL binds itself, its heirs, executors, administrators, successors, and assigns, and the SURETY binds itself, its successors, and assigns, all jointly and severally.

This bond shall be governed by the laws of the State of Washington. In the event of a lawsuit involving this bond, venue shall be proper only in Thurston County Superior Court.

Signed, sealed, and dated this _____ day of _____, 20 _____.

BID IDENTIFICATION:

SALES NAME(S)	REQUIRED DEPOSIT	AGREEMENT NUMBER(S)

DATE OF BID: _____

It Is Hereby Understood and Agreed:

If PRINCIPAL is the high bidder on the sale(s) identified above and, within ten (10) days of the day of sale, transmits cash, certified check, cashier's check, bank draft or money order, payable to the STATE, in the amount of the bid guaranty required by the terms of the Notice of Sale, *then* this obligation shall be void; *otherwise*, it shall remain in force.

SURETY will make payment to the STATE within ten (10) days after demand by the STATE whenever the PRINCIPAL shall fail to make timely payment as described above.

IN WITNESS WHEREOF: the PRINCIPAL and the SURETY have caused this bond to be executed on the date first mentioned.

SECOND OFFICER:

Signature: _____

Name: _____

Title: _____

PRINCIPAL: (Above Named)

Signature: _____

Name: _____

Title: _____

SURETY: (Local Office of Authorized Agent)

Signature: _____

Name: _____

Title: _____

Address: _____

City: _____

State & Zip: _____

SURETY: (Above Named)

Signature: _____

Name: _____

Title: _____

Address: _____

City: _____

State & Zip _____

NOTARY OR COMPANY SEAL IN THE SPACE ABOVE

Instructions for Completing Timber Sale Per Sale(s) Bid Bond

- A. This form is authorized for use as bid guaranty to qualify for bidding on Washington State Department of Natural Resources timber sales.
- B. The Timber Sale Per Sale Bid Bond may be used as bid guaranty on more than one timber sale auction held the same date at the same location.
- C. The full legal name and business address of the PRINCIPAL must be the same as will appear on the bidding record and timber sale contract. The bond must be signed by an authorized person, the name typed or printed, and title shown. If PRINCIPAL is a corporation, a second officer must sign in the space to the left of the signature of the officer executing for the PRINCIPAL.
- D. The full legal name and business address of the SURETY must be inserted where indicated. The bond must be signed by an authorized person. Additionally, the name must be typed or printed below the signature and the title must be shown. If this person is not an officer of the corporation, evidence of authority must be submitted.
- E. If the SURETY does not have a Washington State office or resident agent, but is authorized to transact surety business in the State of Washington as Surety, it may leave the local office signature block blank.
- F. The date of the bid bond must not be later than the auction date.
- G. **The State reserves the right to reject incomplete or *incorrect* bid bond forms, making such forms unacceptable as guaranty.**

STATE OF WASHINGTON
DEPARTMENT OF NATURAL RESOURCES

LOG SORT SEALED BID FORM

Sale Name _____ Agreement Number _____ Date _____

_____ hereby submits the following bid for delivered logs.
(Print Company Name)

_____ Telephone Number _____
(Print Name Authorized Company Representative) (Contact for bid result notification)

(Street Address)

(City, State and Zip)

Agreement Number	Sort Number	Delivered Logs Bid Amount (fill in one only)	
		\$ / MBF	\$ / ton

Bid Deposit Amount \$ _____

Bid Deposit Type: Cash, Certified Check, Cashiers Check, or Money Order
 Per Sale Bid Bond
 Statewide Bid Bond, Number _____

The successful bidder agrees to furnish payment security acceptable to the State in the amount as described in clause P-041 of the Purchaser’s contract prior to log delivery and at a date to be determined by the State.

Bidder’s Warranty and Bid Signature

By signing and submitting this bid as offer to purchase forest products from the State, the Bidder hereby warrants to the State that they have had an opportunity to fully inspect the sale area and the forest products being sold. Bidder further warrants to the State that they enter this bid based solely upon their own judgment of the value of the forest products, formed after their own examination and inspection of both the timber sale area and the forest products being sold. Bidder also warrants to the State that they enter this bid without any reliance upon the volume estimates, acreage estimates, appraisals, pre-bid documentation, or any other representation by the State Department of Natural Resources.

(Signature of Authorized Representative submitting this bid)

(Date of Signature)

(Print name and title of Authorized Representative submitting this bid)

NOTES: A separate bid form is required for each log sort bid and must be delivered in a separate envelope. Photocopies of this bid form may be used. Each photocopy must have original signatures. Final contract award is contingent upon the State’s haul cost analysis. Actual haul route may vary and is subject to change at the State’s discretion. All sales are subject to confirmation by the Commissioner of Public Lands as per RCW 79.15.100.

LOG SORT SEALED BID SUPPLEMENTAL INFORMATION FORM

(Print Company Name)

(Sale Name)

(Agreement Number)

(Sort Number)

(email: optional for DNR production report distribution)

Log Manufacturing Specifications:

Sawlog and Peeler sorts: Enter at least one preferred log length including trim for each log length range below.

Pole sorts (Distribution): Enter three or more lengths. Attach preferred manufacturing information.

Pole sorts (Transmission): Enter six or more lengths. Attach preferred manufacturing information.

Tonnage sorts: See bid form instructions for required log lengths. Enter additional custom lengths as desired.

Log Length Ranges	Bidder's Preferred Log Lengths
16 ft. through 20 ft.	
22 ft. through 30 ft.	
32 ft. through 40 ft.	
Distribution Poles – 35 ft. through 55 ft.	
Transmission Poles – 60 ft.+	

Log Delivery Information:

1) Designate the point of delivery and address (must be a street address)

(Location Name)

(Street Address)

(City, State and Zip)

2) Designate the state approved Scaling and Weighing facilities closest to the point of delivery as needed. Scaling

Location Information

Weighing Location Information

(Scaling Location Name)

(Weighing Location Name)

(Third Party Scaling Organization)

(Weighing Location Owner)

(Scaling Location Street Address)

(Weighing Location Street Address)

(Scaling Location City, State and Zip)

(Weighing Location City, State and Zip)

Final contract award is contingent upon the State's haul cost analysis. Actual haul route may vary and is subject to change at the State's discretion. Additional terms or conditions requested by the bidder on or attached to the Log Sort Sealed Bid or Supplemental Information Forms are informational only and non-binding.

Instructions for Completing the Log Sort Sealed Bid and Supplemental Information Forms.

All bids submitted for the purchase of forest products being sold by the Washington State Department of Natural Resources must have an original signature on behalf of the person or entity submitting the bid, and must be on the form(s) provided in this booklet or a photocopy thereof. The DNR will not accept bids that are not signed, and will not accept bids that are not on the current, approved bid form. All appropriate blanks including Agreement Number, Purchase Log Sort Sale, Sealed Bid Form (4/2/2018)

Sort Number, Bid amount (per mbf or ton as appropriate for the sort), Bid deposit amount and type. Signatures and date on bid form must be completed including the bid bond number if bidder is relying upon a bid bond for bid deposit.

Bids shall not be accepted if a completed **‘Log Sort Sealed Bid Supplemental Information Form’** is not included with the approved **‘Log Sort Sealed Bid Form’**.

Required log lengths for tonnage sorts: Preferred log lengths for tonnage sawlog sorts shall include the following plus any additional lengths identified on the Bid Supplemental Information form:

Species Type	Preferred Lengths
Conifer Sorts	16’, 20’, 24’, 26’, 32’, 40’
Hardwood Sorts	18’, 20’, 26’, 28’, 30’, 36’, 38’, 40’

For more specific information, contact the appropriate region office.

In-Person Bids

- A. Sealed bids must be in auction box or auction envelope before 10:00 a.m. on the day of sale at the location specified in the notice of sale.
- B. Sealed bids must be submitted in an envelope with the name of the sale, the bidder’s name and the contract agreement number clearly written on the outside of the envelope. The full legal name and business address of the bidder must be inserted where indicated on the form, and must be the same as the name on the bid bond and timber sale contract. The bid form must be signed by an authorized person. When a bidder has more than one person authorized to bid, then documentation of those persons with signature authority for bidding must accompany the bid or be on file at the region office. Sealed bid envelopes are available at all region offices. One bid per envelope.
- C. Sealed bid envelopes must contain the following:
 1. A completed **‘Log Sort Sealed Bid Form’**;
 2. A completed **‘Supplemental Information Form’** and;
 3. A bid deposit

Mailed Bids

- A. Mail-in bid envelopes are required to have printed on the outside: “DO NOT OPEN UNTIL SALE DATE. SEALED BID ENCLOSED.” The sealed bid envelope(s) will be enclosed inside the mailed-in envelope. Mailed bids must be submitted in an envelope with the name of the sale, the bidder’s name and the agreement number clearly written on the outside of the envelope. The full legal name and business address of the bidder must be inserted where indicated on the form, and must be the same on the bid bond and timber sale contract. The bid form must be signed by an authorized person. When a bidder has more than one person authorized to bid, then documentation of those persons with signature authority for bidding must accompany the bid or be on file at the region office. Mail-in envelopes are available at all region offices. One bid per mailed-in envelope.
- B. Mail-in or otherwise delivered bids will be accepted up to 4:30 p.m. the last business day before the auction by the region office in which the sale is located. Bidders assume the risk for the method of delivery they chose. The DNR assumes no responsibility for any delays caused by any delivery service.
- C. Sealed bid envelopes must contain the following:
 1. A completed **‘Log Sort Sealed Bid Form’**;
 2. A completed **‘Log Sort Sealed Bid Supplemental Information Form’** and;
 3. A bid deposit

Department of Natural Resources Region Offices

Olympia Headquarters
 1111 Washington St SE
 MS 47000
 Olympia, WA 98504-7000
 (360) 902-1000
www.dnr.wa.gov

Product Sales & Leasing Division

1111 Washington St SE
 MS 47014
 Olympia, WA 98504-7014
 (360) 902-1600

South Puget Sound Region
 950 Fairman Ave N
 Enumclaw, WA 98022-9282
 (360) 825-1631

Pacific Cascade Region

601 Bond Road
 PO Box 280
 Castle Rock, WA 98611-0280
 (360) 577-2025

Southeast Region

713 Bowers Road
 Ellensburg, WA 98926-9301
 (509) 925-8510

Northwest Region

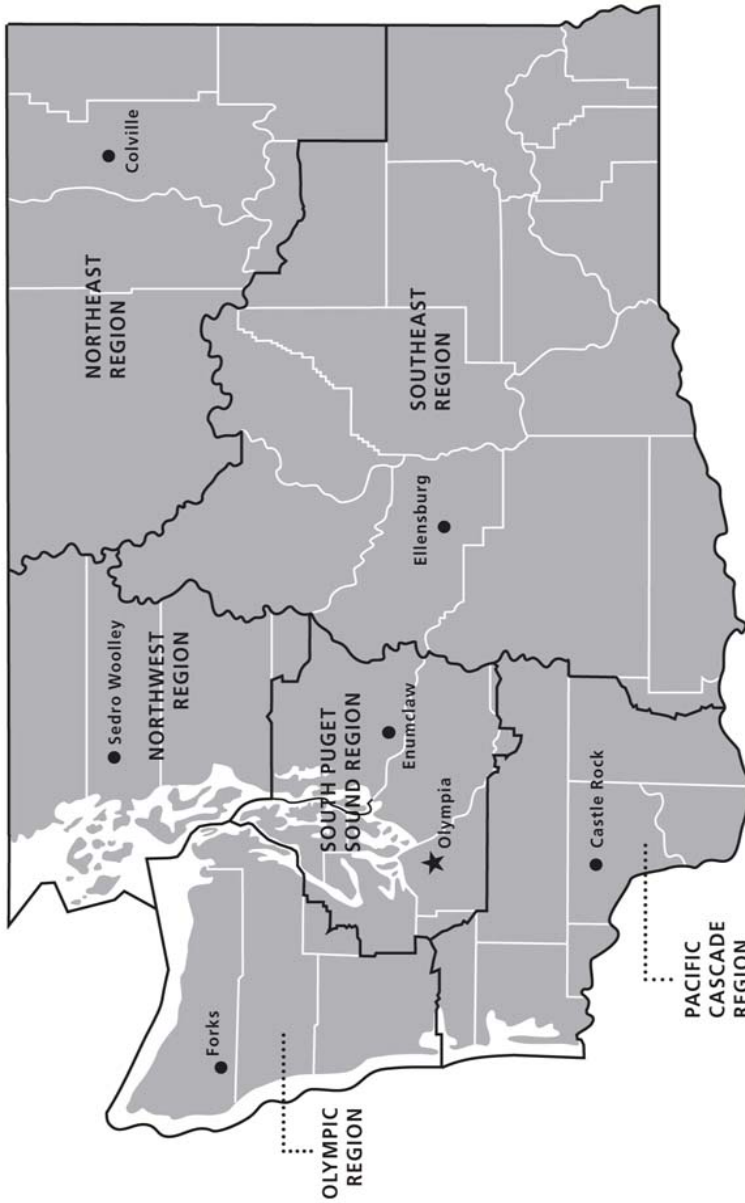
919 N Township St
 Sedro Woolley,
 WA 98284-9384
 (360) 856-3500

Olympic Region





411 Tillicum Lane
 Forks, WA 98331-9271
 (360) 374-2800

Northeast Region

225 S Silke Road
 PO Box 190
 Colville, WA 99114-0190
 (509) 684-7474



DNR REGIONS

-  DNR Region Boundaries
-  County Boundaries
-  DNR Region Office
-  Olympia Headquarters



WASHINGTON STATE DEPT OF
NATURAL RESOURCES



For more information about how public lands are managed visit DNR's web page at www.dnr.wa.gov

Fire, Burn Ban Information and Region Offices
 Toll Free: 1-800-527-3305 General TTY: 7-1-1





WASHINGTON STATE DEPT OF
**NATURAL
RESOURCES**

1111 WASHINGTON ST SE
MS 47014
OLYMPIA WA 98504-7014

www.dnr.wa.gov

For alternate formats
of this document,
Call (360) 902-1000
TRS: 7-1-1

PRINTED IN THE USA ON RECYCLED PAPER

