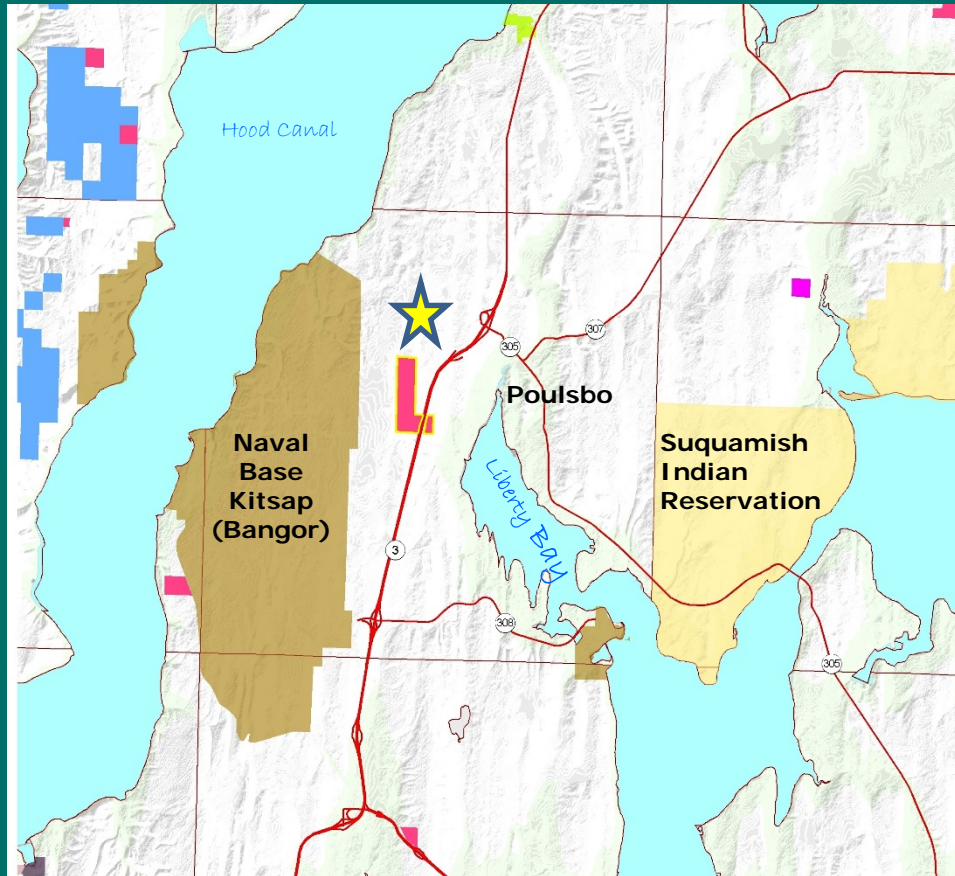


West Poulsbo
Trust Land Transfer
02-090371
Kitsap County



West Poulsbo Trust Land Transfer

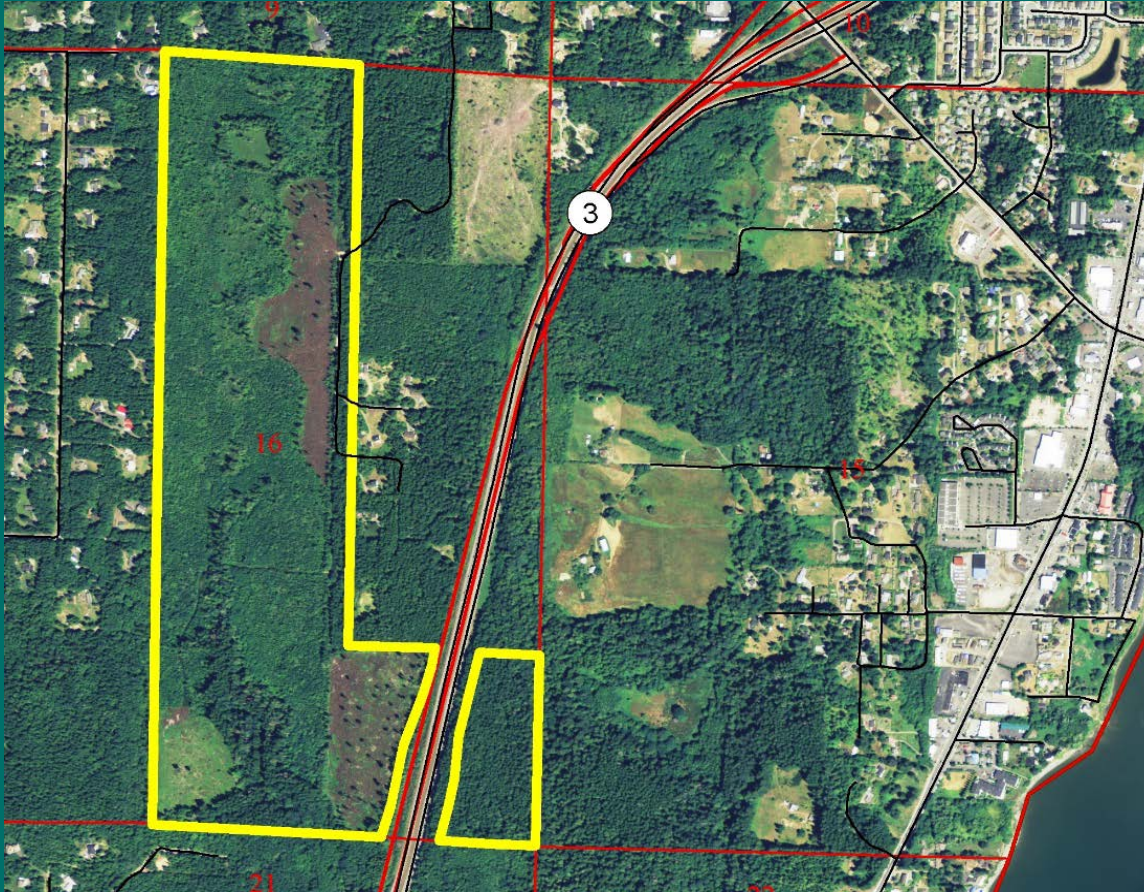


Located near
Poulsbo in
Kitsap County

Transfer to Kitsap
County

Both sides of
Highway 3

West Poulsbo Trust Land Transfer



Common
School Trust

186.32 acres

Mostly young
plantations

Some timber -
DF, RC, WH

West Poulsbo Trust Land Transfer

Appraised Value of Transfer Property

Timber	(250 MBF)	\$ 122,000	\$ 488/MBF
Land & Reprod	(186.32 acres)	\$ 1,348,000	\$ 7,235/acre
TOTAL		\$ 1,470,000	\$ 7,890/acre

Distribution of Funds

Timber Value - Common School Construction Account

Land Value - Real Property Replacement Account



West Poulsbo Trust Land Transfer



Questions ?

Resolution # 1439

DNR photo



WASHINGTON STATE DEPARTMENT OF
Natural Resources

Peter Goldmark - Commissioner of Public Lands