



Public Auction Sale of Timber

July 2019

Book 1001



IMPORTANT NOTICES

Natural Resources (DNR)

Governmental Regulatory Actions or Orders

The purchaser assumes the risk of liabilities related to regulatory actions or orders by any government agency that may affect the operability of these timber sales. Such regulatory actions or orders include, but are not limited to, actions taken pursuant to the State Forest Practices Act, Chapter 76.09 RCW, and the Federal Endangered Species Act, 16 U.S.C. §§ 1531-1544. Please see timber sale contract clauses G-066 and G-220 for further information.

Threatened and Endangered Species

DNR cannot verify the presence or absence of any threatened or endangered species that may affect the operability of the timber sale. Purchasers must rely on their own assessments.

Export Restricted

All timber purchased under these state DNR contracts shall not be exported outside of the United States until the timber has been processed. Purchasers shall not violate any of the prohibitions in WAC 240-15-015 (relating to the prohibitions on export and substitution), WAC 240-15-025 (relating to reporting requirements), and WAC 240-15-030 (relating to enforcement). If purchasers knowingly violate WAC 240-15-015, purchasers shall be barred from bidding on or purchasing export restricted timber as provided.

Cover photos

Timber Sales in this book are from state trust lands, managed to help build K-12 public schools, state universities, colleges, prisons, mental hospitals, the state Capitol; and to support local services in many counties.

Top right: Landscape view of DNR-managed trust lands in western Washington. Photo courtesy of DNR staff.

Second down right: Timber harvest operations on DNR-managed trust land. Photo courtesy of DNR staff.

Third down right: Log truck loaded with timber harvested from DNR-managed trust land. Photo courtesy of DNR staff.

Bottom right: Marcus Whitman Elementary School in Richland Washington. Photo courtesy of Richland School District.

Bottom middle: Storytime at the Shelton Timberland Library. Photo courtesy of Timberland Regional Library.

Bottom left: Douglas-fir seedlings growing at the Webster Nursery. Many of these seedlings will be planted following timber harvest on DNR-managed trust lands. Photo courtesy of DNR staff.

Table of Contents

Certification Opportunities for DNR Timber Purchasers	Page 3
Bidder/Purchaser Auction and Bidding Information	Page 5
Summary of All Sales Being Offered in July	Page 11
Miller Park VRH VDT	Page 13
Thin It To Win It	Page 21
Q Justify Sorts	Page 35
Q Kings	Page 41
Sealed Bid Form and Instructions	Page 45
Statewide Bid Bond and Instructions	Page 47
Timber Sale per Sale Bid Bond and Instructions	Page 51
Log Sort Sealed Bid Form and Instructions	Page 55



Certification Opportunities for DNR Timber Purchasers

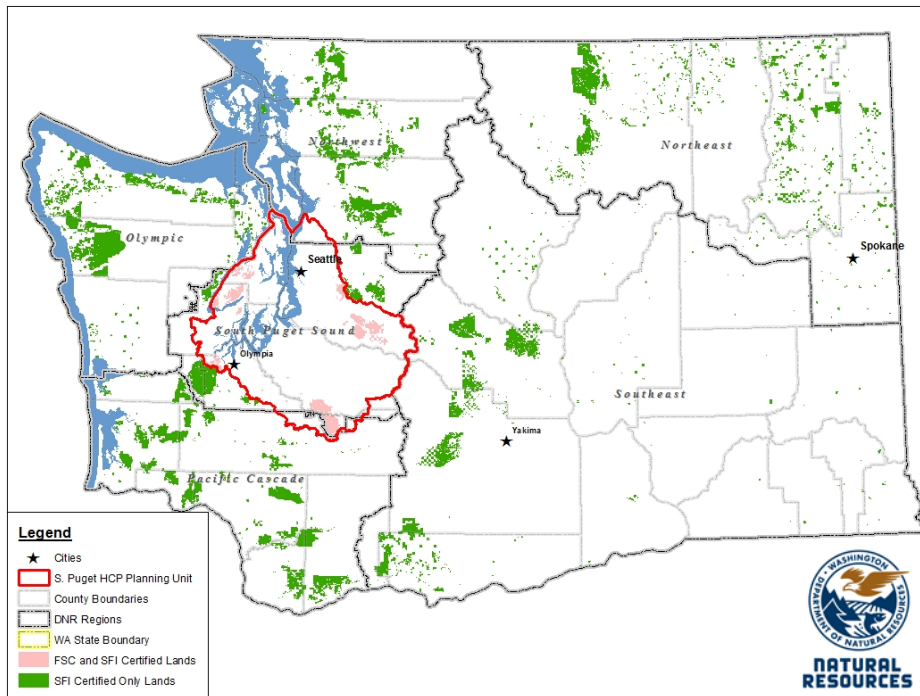
Certified forests are grown to an approved set of standards which demonstrate environmentally responsible, socially beneficial, and economically viable management practices that promote responsible forestry. This unique commitment to responsible forestry recognizes that forest landowners play a critical role in ensuring the long-term health and sustainability of our forests.

Forest Stewardship Council® (FSC®) is an independent, non-profit organization that promotes responsible management of the world's working forests through the development of forest management standards, a voluntary certification system, and trademarks that provide recognition and value to products bearing the FSC label in the marketplace. FSC standards ensure forestry is practiced in an environmentally responsible, socially beneficial, and economically viable way.

Sustainable Forestry Initiative Inc. is an independent, non-profit organization internationally endorsed and accepted around the world. The Sustainable Forestry Initiative® (SFI) program is based on the premise that responsible environmental behavior and sound business decisions can coexist. Its three-chamber Board of Directors governs all aspects of the SFI® program, with equal representation from the environmental, economic, and social sectors.

Currently, all Department of Natural Resources (DNR)-managed forestlands and conservation areas in Washington State are certified under the SFI program Standard. Forestlands within DNR's South Puget Habitat Conservation Plan Planning Unit, located within parts of King, Pierce, Thurston, Lewis, Kitsap, and Mason counties, are dually certified under both the FSC-US Forest Management Standard and the SFI program Standard.

Certification under each standard involves an inspection audit of the landowner's forest management activities by an independent, accredited third-party to verify that it meets specified forest management principles. If the forest unit complies with the specific standard, the landowner receives a certificate of conformance ensuring that responsible forestry is being practiced. Both standards encourage integration of perpetual growing and harvesting of trees with strong measures to protect wildlife, plants, soil, water, and air quality. Both standards provide a seal of approval that forests certified under these principles are well-managed. The global marketplace recognizes and endorses multiple forest certification standards. Each standard has individual market niches. By being dually certified, DNR can maximize its customer base and provide choices to the consumer.



DNR's FSC certificate number is: BV-FM/COC-080501

DNR's SFI certificate number is: PwC-SFIFM-513

DNR-managed forestlands within the South Puget Habitat Conservation Plan Planning Unit (located within parts of King, Pierce, Thurston, Lewis, Kitsap, and Mason counties) are certified as being in compliance with the Forest Stewardship US Forest Management Standard.

To learn more about chain of custody and demonstrating that your timber is derived from a responsibly managed forest and/or to learn more about becoming a participant in the FSC Program, visit <https://us.fsc.org/>.

To learn more about DNR timber sales certified under the FSC Standard, visit www.dnr.wa.gov.

FSC A.C. owns all right, title, and interest in and to the Forest Stewardship Council trademarks.

All DNR-managed forested state trust lands across the state have been certified as being in compliance with the Sustainable Forestry Initiative Forest Management Standard.

To learn more about chain of custody and demonstrating that your timber is derived from a responsibly managed forest and/or to learn more about becoming a participant in the SFI program, visit www.sfiprogram.org.

To learn more about DNR timber sales certified under the SFI program Standard, visit www.dnr.wa.gov.

SFI Marks are registered marks owned by Sustainable Forestry Initiative Inc.

To learn more about certification on DNR-managed forested state trust lands, visit <https://www.dnr.wa.gov/programs-and-services/product-sales-and-leasing/timber-sales/forest-certification> or contact:

Product Sales & Leasing Division, Product Sales Section:

Koshare Eagle, Assistant Division Manager, 360-902-1561, koshare.eagle@dnr.wa.gov
 Steve Teitzel, Operations, 360-902-1741, steve.teitzel@dnr.wa.gov

Forest Resources Division, HCP and Scientific Consultation Section:

Allen Estep, Assistant Division Manager, 360-902-2898, allen.estep@dnr.wa.gov
 Douglas Kennedy, Forest Certification Program Lead, 360-902-1283, douglas.kennedy@dnr.wa.gov

Washington State Department of Natural Resources (DNR)

Bidder's/Purchaser's Inspection of Sale Area and Forest Products

Acreage estimates and volume estimates contained within each timber notice of sale and each timber sale contract are made only for administrative and identification purposes. Except as expressly provided by the timber sale contract, the purchaser shall be responsible for paying the entire purchase price, even if the actual acreage or timber volume varies from the estimated quantity or volume shown.

All prospective bidders have the opportunity and are expected to inspect the sale area and the forest products located thereon. Bidders shall not rely on any representations by the State including, but not limited to, acreage estimates, volume estimates, appraisal or pre-bid documentation. The successful bidder/purchaser will further warrant that they have entered the timber sale contract without any reliance upon the DNR's volume estimates, acreage estimates, appraisals, pre-bid documentation, or any other representation by the DNR.

Any timber sale contract arising out of these public auctions will require the successful purchaser to warrant that they are entering the timber sale contract based solely upon their own judgment of the value of the forest products, formed after their own examination and inspection of both the timber sale area and the forest products being sold.

Exclusion and Disclaimer of Warranties

The PARTIES AGREE that the IMPLIED WARRANTIES OF MERCHANTABILITY AND FITNESS FOR A PARTICULAR PURPOSE, and ALL OTHER WARRANTIES EXPRESS OR IMPLIED, ARE EXCLUDED from this transaction, and shall not apply to the goods sold. For example, THE FOLLOWING SPECIFIC MATTERS ARE NOT WARRANTED, and are EXCLUDED from this transaction:

- a. ***The merchantability of the forest products.*** The use of the term "merchantable" in any document is not intended to vary the foregoing.
- b. ***The condition of the forest products.*** All forest products will be conveyed "AS IS."
- c. ***The acreage contained within any sale area.*** Any acreage descriptions appearing in the timber notices of sale, timber sale contract, timber sale map or other documents are estimates only, provided solely for administrative and identification purposes.
- d. ***The volume, quality, or grade of the forest products.*** The descriptions of the forest products to be conveyed are estimates only, made solely for administrative and identification purposes.
- e. ***The correctness of any soil or surface conditions, presale construction appraisals, investigations, and all other pre-bid documents prepared by or for the State.*** These documents have been prepared for the State's appraisal purposes only.
- f. ***That the sale area is free from threatened or endangered species, or their habitat.*** The State is not responsible for any interferences with forestry operations that result from the presence of any

threatened or endangered species, or the presence of their habitat, within the sale area.

g. *That the forestry operations to be performed under this contract will be free from regulatory actions by governmental agencies.* The State is not responsible for actions to enforce regulatory laws, such as the Washington Forest Practices Act (Chapter 76.09 RCW), taken by the Department of Natural Resources or any other agency that may affect the operability of these timber sales.

h. Items contained in any other documents prepared for or by the State.

Please also see timber sale contract clause G-060 for further information.

BIDDING PROCEDURES FOR TIMBER AUCTIONS

The general requirements that follow are a part of all Timber Notices of Sale to be auctioned by the Department of Natural Resources (DNR).

General Information

The State reserves the right to waive minor irregularities and the right to reject any or all bids.

A. This book contains the timber notices of sale and maps for each timber sale scheduled to be auctioned. More specific information can be obtained by contacting the appropriate region office at the number listed on the back cover of this book.

B. The timber notice of sale is a summary of sale information. For more specific information, interested parties are encouraged to view the Appraisal Packets on the DNR Internet Site @ www.dnr.wa.gov, this will take you directly to the Product Sales Section. The Appraisal Packets contain **DRAFT** copies of the timber notice of sale, map, contract, road plan, cruise data, precruise and cruise narrative, Forest Practices Application (FPA).

C. The sale preview packets may be obtained at no charge for individual sales by visiting the appropriate region office.

D. Timber sale contracts contain extensive terms and conditions that will be binding upon successful high bidders. Each bidder should carefully review all terms contained in the appropriate **DRAFT** timber sale contract prior to bidding on a sale, and should review the final contract prior to signing. **DRAFT** timber sale contracts are contained in the preview and presales packets and are available upon request at the respective region office.

E. Sales advertised in this book have not been approved by the Board of Natural Resources and are subject to the Board's approval before they will be sold. The Board meets and approves sales approximately six weeks prior to auction. All sales are subject to confirmation by the DNR under RCW 79.15.120.

F. The State does not guarantee the accuracy of any information contained herein pertaining to particular sales. Therefore, all prospective purchasers are expected to make their own independent inspections and appraisals prior to bidding.

G. If any conflict exists between the information in the Timber Notice of Sale, timber sale map,

sale preview packets and that in the timber sale contract, the **signed contract will prevail**.

H. Purchasers must pay the Forest Excise Tax on the bid price, permanent road construction costs, and other considerations. The tax rate is 5% without the EARR credit and 4.2% with the credit. For more information contact the Department of Revenue, Forest Tax Section at 1-800-548-8829.

I. **Within 30 days of sale confirmation, the apparent high bidder will provide to the State the Performance Security** specified on each Notice of Sale. **The successful bidder also agrees to return a signed contract to the State within 30 days of confirmation.** Failure to provide a signed contract to the state within 30 days of confirmation may result in a loss of bidder's rights to the products sold and forfeiture of initial deposit moneys.

J. Each DNR region office has information about sales offered in that region. For further information, contact the respective DNR region office. Region office addresses and telephone numbers appear on the back cover of this booklet.

K. The purchaser assumes the responsibility for any costs associated with extra maintenance or repair levied by a county for any county road used by the purchaser.

Bidding Process

A. All timber will be auctioned using the sealed bid method.

B. Bids submitted on day of auction must be in the bid box at the specified auction location before 10:00 a.m. The respective DNR region office must receive mailed bids by 4:30 p.m., on the last business day before the auction. Bidders assume all risk for the method of delivery.

C. The DNR has the right to reject bid forms that are completed incorrectly. *All bid forms must have an original signature on behalf of the person or entity submitting the bid, and must be on the form provided in this booklet or a photocopy thereof. Revised documents are not permissible.* Bidding instructions are on the back of the Sealed Bid Form. A bid deposit must be included in the sealed bid envelope unless using a Timber Sale Statewide Bid Bond.

D. All bids must include the completed Sealed Bid Form and bid deposit.

E. Bids will be opened in each respective region in the order in which sales appear in the Public Auction Sale of Timber book (alphabetically by county and by agreement number). Sales added after the book is printed will be inserted to retain this order. Sort sales may be auctioned out of this sequence at the State's convpignce.

F. If a tie bid occurs, the names of the tie bidders will be placed in a hat and the successful bidder will be determined by a drawing.

G. For sales offered on a stumpage basis, the apparent high bidder on a particular sale will have the option of withdrawing additional sealed bids submitted for any remaining sales to be auctioned. The apparent high bidder must exercise this option within two minutes after the apparent high bidder is announced. **This option is not available for sales offered on a delivered basis.**

Auction Time and Location

Auctions will start at 10:00 a.m. and close at 4:00 p.m. on the date and at the location specified in each Timber Notice of Sale.

Bid Deposits

- A. Required bid deposits are listed on each Timber Notice of Sale.
- B. Bid deposits must be in the form of cash, certified check, cashiers' check, money order or bid bond.
- C. Bid bonds may be either a Timber Sale Statewide Bid Bond or a Timber Sale Per Sale Bid Bond.
- D. All bid deposits shall be submitted by the person or entity submitting the bid and made payable to the Department of Natural Resources. **Third party deposits will not be accepted.**

Timber Sale Per Sale Bid Bonds

- A. The Per Sale Bid Bond shall guarantee payment of the bid deposit **within ten days of auction.**
- B. The balance between the bid bond and the Initial Deposit payment is due **by 4:30 p.m., on the day of auction.**
- C. Additional forms and instructions for a Per Sale Bid Bond are available at any DNR region office.

Timber Sale Statewide Bid Bond

- A. Statewide Bid Bonds shall guarantee payment of the Initial Deposit on any statewide timber sale while the bond is in effect.
- B. The Statewide Bid Bond must be received by the Department of Natural Resources, Product Sales and Leasing Division, P.O. Box 47014, Olympia, Washington, 98504-7014, ten days in advance of the auction date. The bond shall be in the amount of \$150,000.00.
- C. Successful bidders using a Statewide Bid Bond must pay the total Initial Deposit payment (10% of the total bid price) **by 4:30 p.m., on the day of the auction.**
- D. A Statewide Bid Bond cannot be used to secure the Initial Deposit payment due the day of auction.
- E. Additional forms and instructions for a statewide bid bond are available at any DNR region office.

Payments

The initial deposit for a sale is 10% of the total bid value as submitted by the apparent high bidder (25% if the bidder is a defaulter as defined under WAC 332-140-300) and never less than \$5,000.00 for lump sum sales. For Lump Sum sales appraised at less than \$5,000.00, the entire bid value is due on day of auction.

- A. Apparent high bidders using cash, certified check, cashiers' check or money order as a bid deposit must pay the total Initial Deposit amount by 4:30 p.m. on auction day.
- B. Apparent high bidders using a Timber Sale Per Sale Bid Bond as a bid deposit must pay the difference between the bid deposit and the total initial deposit by 4:30 p.m., on the day of auction. The bid bond amount must be replaced with a certified check, cashiers' check, bank draft, cash, money order, or wire transfer within ten days of the auction.
- C. Apparent high bidders using a Timber Sale Statewide Bid Bond must pay the entire Initial Deposit amount by 4:30 p.m. on the day of auction.

Fees due on the day of sale must be paid by 4:30 p.m.

All payments must be in the form of a certified check, cashiers' check, bank draft, cash, money order or wire transfer.

Eligibility to Bid

In order to bid on State timber sales you must be:

- 18 years of age (or have a co-signer who meets the eligibility requirements)
- Licensed to do business in the State of Washington
- Eligible to bid on Export Restricted timber
- Authorized to submit bids

Authorized Representatives

Company officers or company authorized representatives may bid on State sales, sign State documents, or sign checks. A list of authorized representatives and their specific authorities must be submitted, in writing, to the Department of Natural Resources, Product Sales and Leasing Division, P.O. Box 47014, Olympia, Washington, 98504-7014, ten days in advance of the auction. A company owner or officer must sign this submittal.



Summary Report of All Sales for the Month of July 2019

Board Sales

<u>County</u>	<u>Region</u>	<u>Agree #</u>	<u>FSC® Sale Name</u>	<u>Volume</u>	<u>Value</u>
Jefferson	Olympic	98320	MILLER PARK VRH VDT	6,026	\$768,000.00
Jefferson	Olympic	98534	THIN IT TO WIN IT	12,800	\$687,000.00
Kittitas	Southeast	98347	Q JUSTIFY SORTS	1,848	\$1,009,780.00
Stevens	Northeast	98253	Q KINGS	4,115	\$637,000.00
			Total	===== 24,789	===== \$3,101,780



*Scan with your smartphone or tablet to go
to the July 2019 timber auction page*



TIMBER NOTICE OF SALE

SALE NAME: MILLER PARK VRH VDT

AGREEMENT NO: 30-98320

AUCTION: July 24, 2019 starting at 10:00 a.m., Olympic Region Office, Forks, WA

COUNTY: Jefferson

SALE LOCATION: Sale located approximately 35 miles south of Forks, WA

PRODUCTS SOLD AND SALE AREA:

All timber, except trees marked with a band of blue paint, bounded out by leave tree area tags, or any downed red cedar, or timber that has been on the ground for five years or more (five years is defined by more than 1.5 inches of sap rot); bounded by Timber Sale Boundary tags, timber type change or the C-2300 road in Unit 1; Timber Sale Boundary tags, and the C-2300 road in Units 2, 3, 4, 5, 8, 9, 10, 11, 12, 13, 14, and 17; Timber Sale Boundary tags, the C-2300 road, the C-2330 road and the C-2332 road in Unit 6; Timber Sale Boundary tags and the C-2337 road in Unit 7; Timber Sale Boundary tags, Special Management Unit tags, and the C-2300.2 road in unit 16. All timber bounded with orange Right-of-Way Boundary tags and the N-1130 road in the Waste Area ROW. All timber as described in Schedule C (Cut Tree Selection Criteria), except trees as described in Schedule D (Leave Tree Selection Criteria), bounded by Timber Sale Boundary tags, Special Management Unit tags, trees marked with two blue slashes at eye level with blue butt marks, the C-2300 road and the C-2300.2 road in Unit 15. Located on part(s) of Sections 3, 4, 9, 10, 14, 15 and 22 all in Township 25 North, Range 12 West, W.M., containing 208 acres, more or less.

CERTIFICATION: This sale is certified under the Sustainable Forestry Initiative® program Standard (cert no: PwC-SFIFM-513)

ESTIMATED SALE VOLUMES AND QUALITY:

Table with columns: Species, Avg DBH, Ring Count, Total MBF, and MBF by Grade (1P, 2P, 3P, SM, 1S, 2S, 3S, 4S, UT). Rows include Hemlock, Douglas fir, Red alder, Spruce, Red cedar, and Sale Total.

MINIMUM BID: \$768,000.00

BID METHOD: Sealed Bids

PERFORMANCE SECURITY:

\$100,000.00

SALE TYPE: Lump Sum

EXPIRATION DATE: October 15, 2021

ALLOCATION: Export Restricted

BID DEPOSIT: \$76,800.00 or Bid Bond. Said deposit shall constitute an opening bid at the appraised price.

HARVEST METHOD: Cable, and Ground-based Equipment. 74% cable. 26% ground based shovel/tracked skidder. Rubber tired skidders will only be allowed if rutting and skidding requirements can be met and a harvest plan is submitted and approved. A 30' equipment limitation zone applies on all typed streams.



TIMBER NOTICE OF SALE

ROADS: 5.25 stations of required construction. 22.00 stations of optional construction. 400.75 stations of required prehaul maintenance. 408.70 stations of optional prehaul maintenance. Road construction, maintenance, rock haul, and log haul will not be permitted from October 15 to April 15 unless authorized in writing by the Contract Administrator on the C-2300.2 road (stations 0+00 - 9+50). GAF Creek Bridge retie and stringer replacement on the C-2300 road (stations 246+00 - 247+00) must be completed between July 1st and September 30th. Road work, right-of-way timber falling and yarding, rock pit operations, or operation of heavy equipment is not permitted from one hour before official sunrise to two hours after official sunrise and from one hour before official sunset to one hour after official sunset from April 1 through September 23 on the C-2300 road from 300+50 to 343+50 and on the N-1130 road from 128+00 to 164+00.

ACREAGE DETERMINATION

CRUISE METHOD: Sale acreage was 100% GPS'd. Sale units were cruised using a variable plot sample.

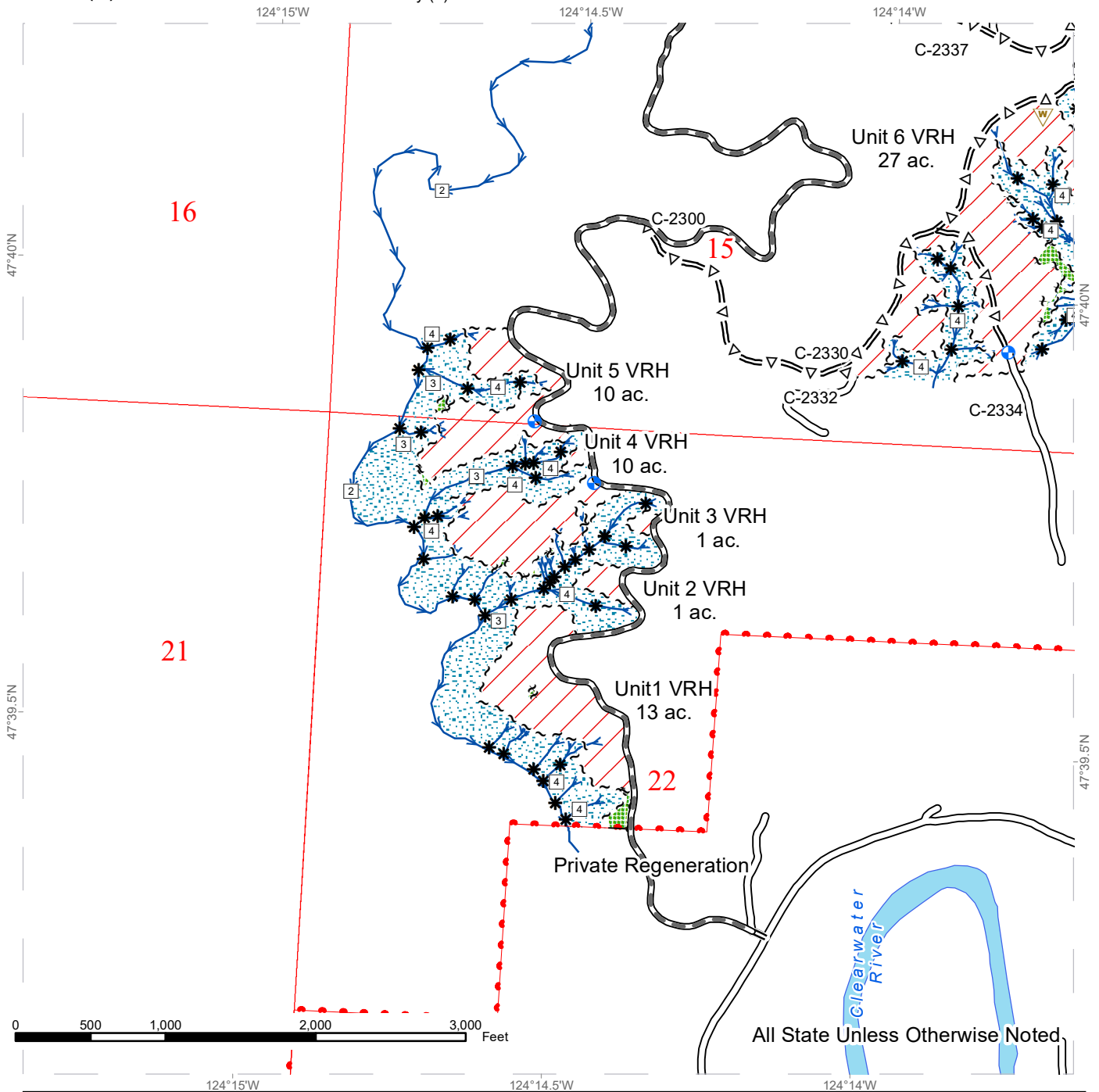
FEES: \$102,442.00 is due on day of sale. \$9.00 per MBF is due upon removal. These are in addition to the bid price.

SPECIAL REMARKS: All falling and yarding operations in Unit 1 shall be completed by May 15th, 2020. Cable assist required in portions of Unit 1 as shown on Logging Plan Map.

TIMBER SALE MAP

SALE NAME: MILLER PARK VRH VDT
AGREEMENT #: 30-098320
TOWNSHIP(S): T25R12W
TRUST(S): Common School and Indemnity (3)

REGION: Olympic Region
COUNTY(S): Jefferson
ELEVATION RGE: 300'-940'



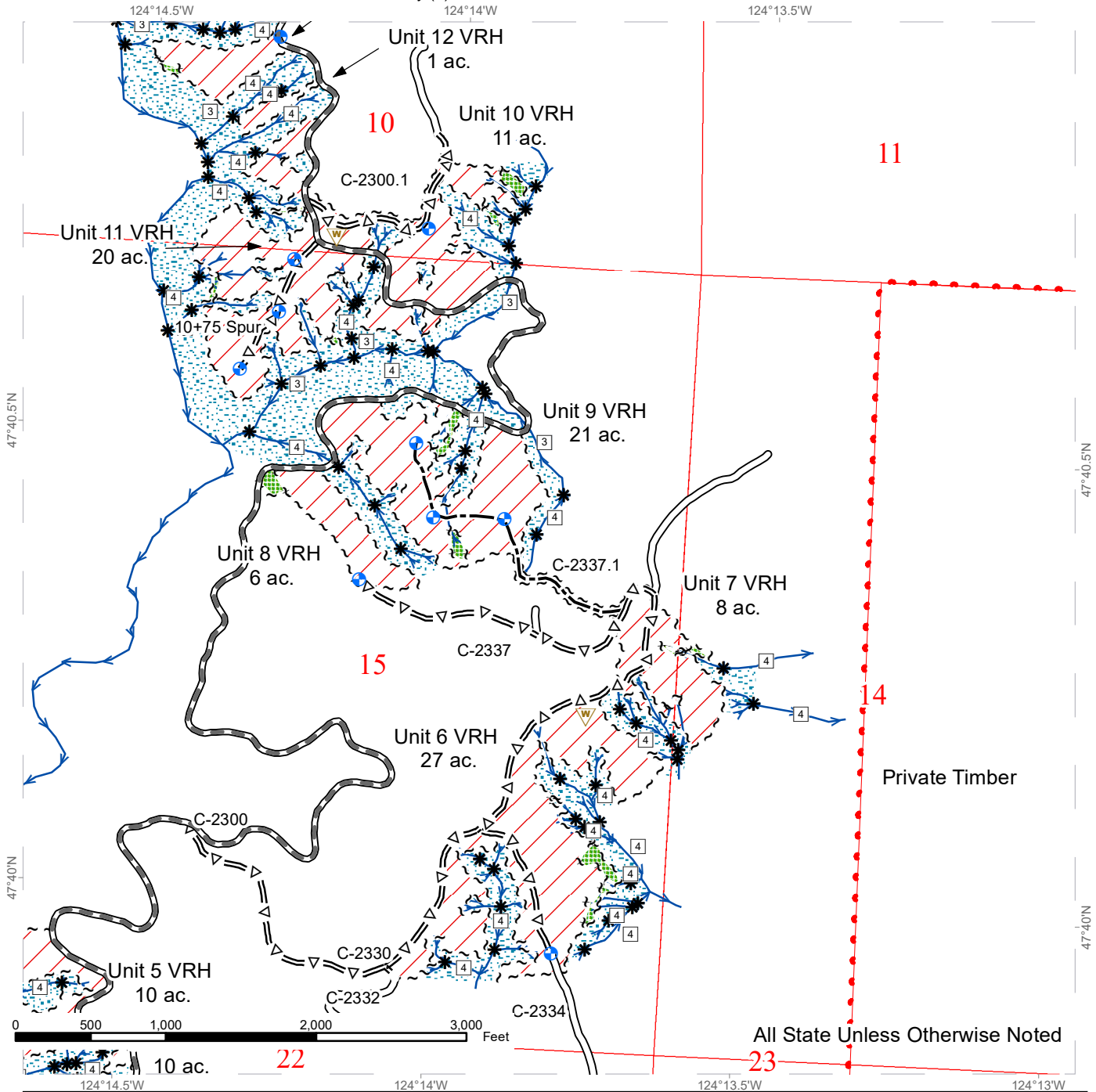
~ ~ ~ Timber Sale Boundary Tags	=Δ= Optional Pre-Haul Maintenance	□ Stream Type
⋈ ⋈ ⋈ Leave Tree Tags	⊕ Proposed Landing	* Stream Type Break
— Timber Type Change	⚠ Waste Area	
••••• DNR Managed Lands	▒ Leave Tree Area	
/// Variable Retention Harvest	▒ Riparian Mgt Zone	
— Existing Roads	→ Streams	
— Required Pre-Haul Maintenance	□ Public Land Survey Sections	

*All Streams Type 5's Unless Otherwise Noted

TIMBER SALE MAP

SALE NAME: MILLER PARK VRH VDT
AGREEMENT #: 30-098320
TOWNSHIP(S): T25R12W
TRUST(S): Common School and Indemnity (3)

REGION: Olympic Region
COUNTY(S): Jefferson
ELEVATION RGE: 300'-940'



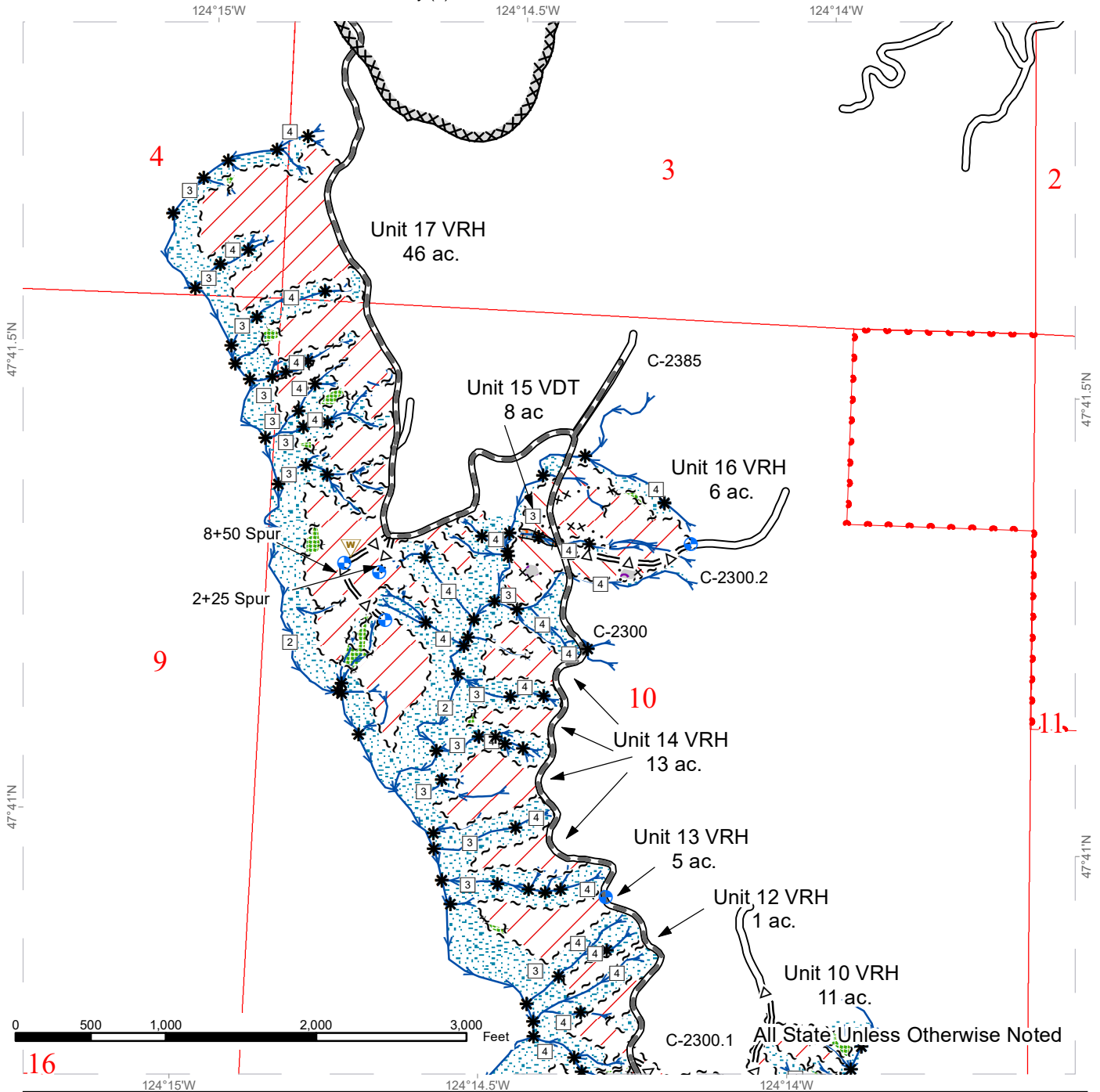
~ ~ ~ Timber Sale Boundary Tags	--- Optional Construction	□ Stream Type
~ ~ ~ Leave Tree Tags	⊕ Proposed Landing	* Stream Type Break
••• DNR Managed Lands	W Waste Area	
/// Variable Retention Harvest	■ Leave Tree Area	
Existing Roads	▨ Riparian Mgt Zone	
Required Pre-Haul Maintenance	→ Streams	
=Δ= Optional Pre-Haul Maintenance	Public Land Survey Sections	

*All Streams Type 5's Unless Otherwise Noted

TIMBER SALE MAP

SALE NAME: MILLER PARK VRH VDT
AGREEMENT #: 30-098320
TOWNSHIP(S): T25R12W
TRUST(S): Common School and Indemnity (3)

REGION: Olympic Region
COUNTY(S): Jefferson
ELEVATION RGE: 300'-940'



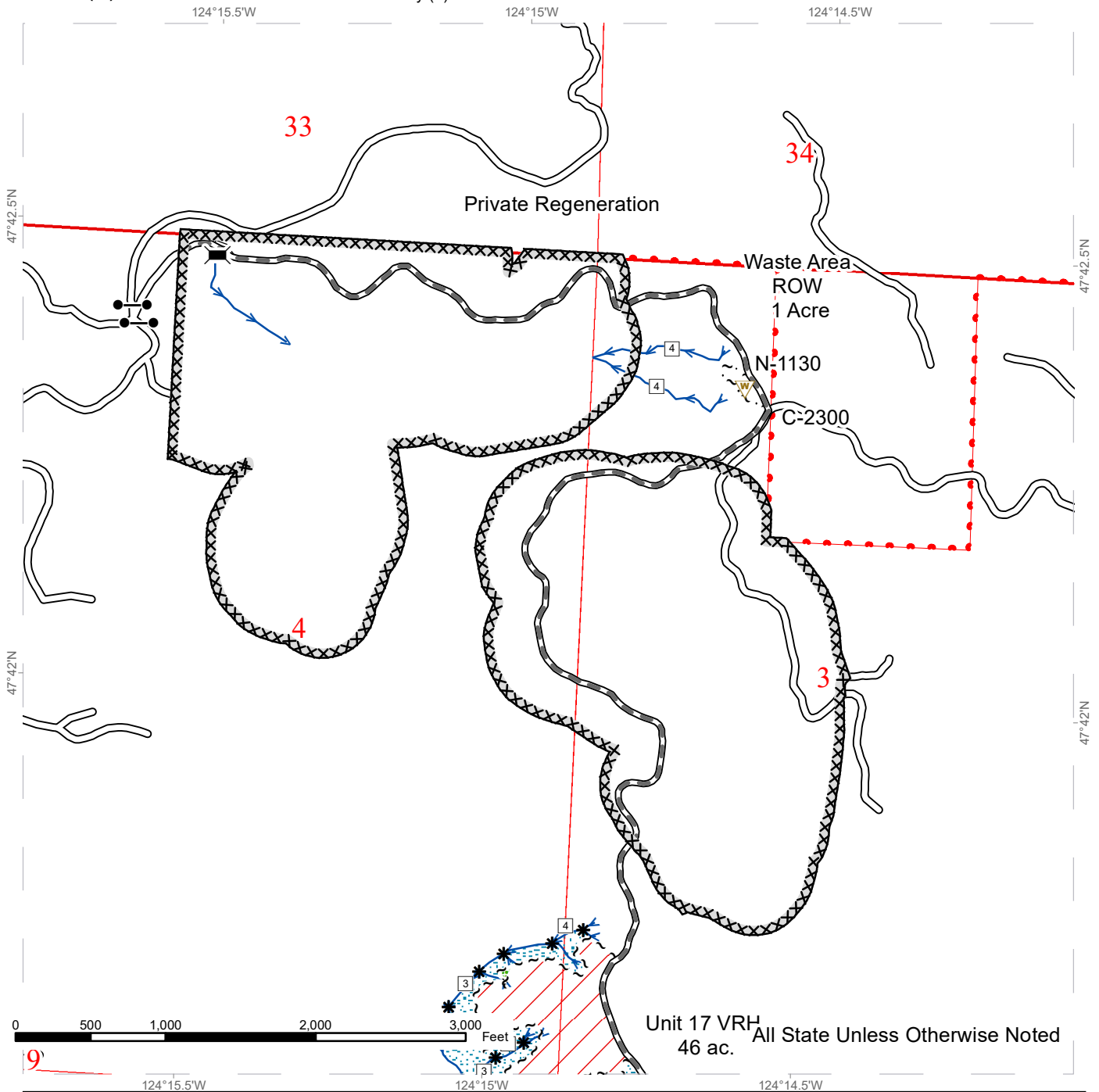
~ ~ ~ Timber Sale Boundary Tags	Existing Roads	Leave Tree Area
... xx Special Mgmt Area	Required Pre-Haul Maintenance	Riparian Mgt Zone
~ ~ Leave Tree Tags	= Δ = Optional Pre-Haul Maintenance	Streams
• • • DNR Managed Lands	Proposed Landing	Public Land Survey Sections
— Skip	Waste Area	Stream Type
Variable Retention Harvest	Skip	Stream Type Break
Variable Density Thinning	Gap	Timing Restriction

*All Streams Type 5's Unless Otherwise Noted

TIMBER SALE MAP

SALE NAME: MILLER PARK VRH VDT
AGREEMENT #: 30-098320
TOWNSHIP(S): T25R12W
TRUST(S): Common School and Indemnity (3)

REGION: Olympic Region
COUNTY(S): Jefferson
ELEVATION RGE: 300'-940'



Unit 17 VRH
46 ac. All State Unless Otherwise Noted

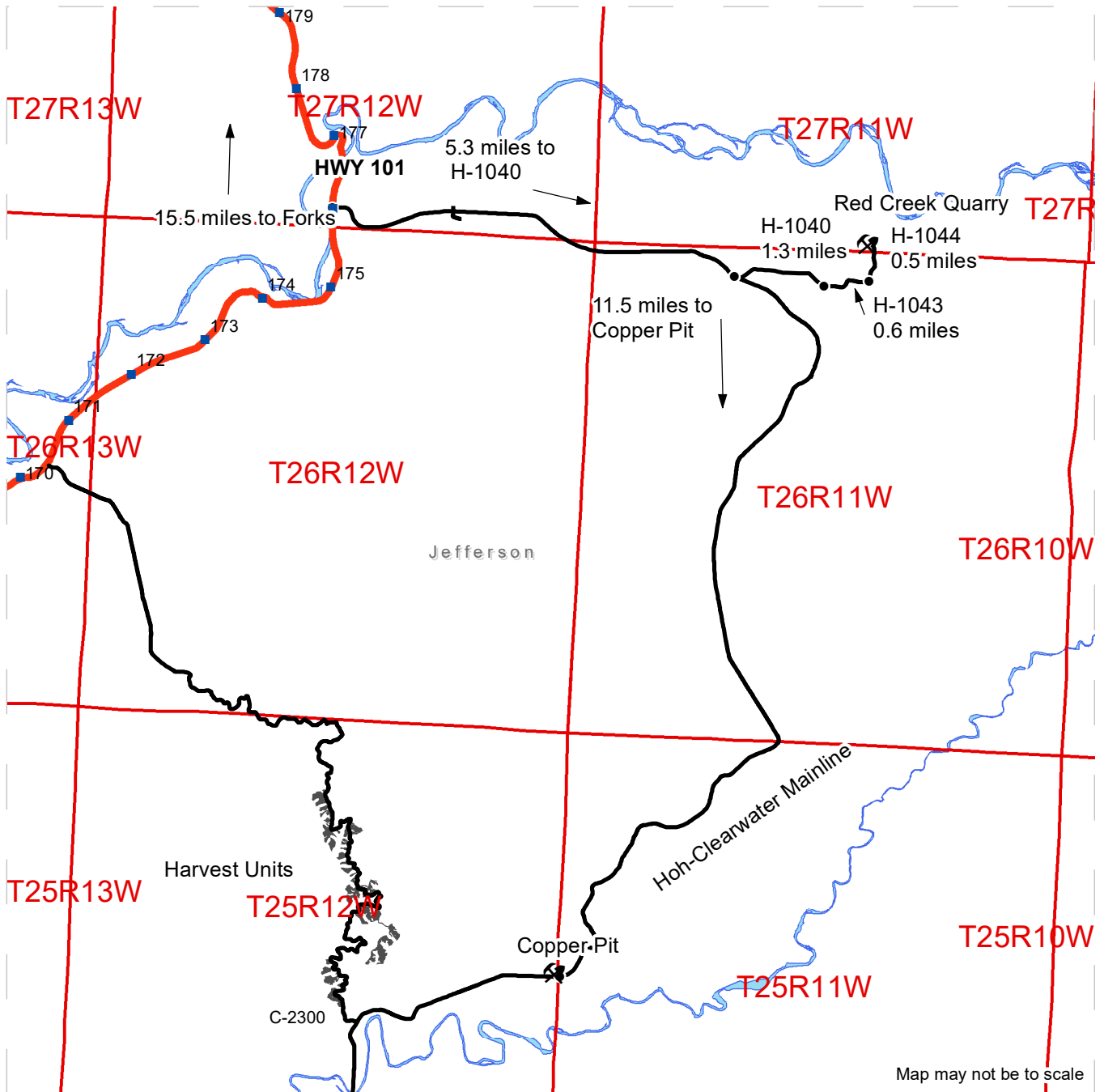
~ ~ ~ Timber Sale Boundary Tags	▬ Required Pre-Haul Maintenance	□ Public Land Survey Sections
~ ~ ~ Right of Way Tags - Single	▬ Required Reconstruction	□ Stream Type
~ ~ Leave Tree Tags	⚠ Waste Area	* Stream Type Break
• • • DNR Managed Lands	▬ Leave Tree Area	⊠ Bridge Removal
/// Variable Retention Harvest	▬ Riparian Mgt Zone	XXXX Timing Restriction
▬ Existing Roads	➡ Streams	

*All Streams Type 5's Unless Otherwise Noted

DRIVING MAP

SALE NAME: Miller Park VRH VDT
AGREEMENT#: 30-098320
TOWNSHIP(S): T25R12W, T25R11W, T27R11W
TRUST(S): Common School and Indemnity (3)

REGION: Olympic Region
COUNTY(S): JEFFERSON
ELEVATION: 300'-940'



Legend

- WSDOT - Milepost Markers
- Hauling Route
- Harvest Units
- Distance Indicator
- ⚡ Rock Pit
- Haul Route
- County Boundaries
- Highway
- Public Land Survey Townships
- Open Water

Red Creek Quarry: From Forks, drive 15.5 miles south on US Hwy 101 and turn east onto the Hoh-Clearwater Mainline for 5.3 miles and turn left onto the H-1040. Continue on the H-1040 for 1.3 miles and turn left on the H-1043. Stay on the H-1043 for 0.6 miles and turn left onto the H-1044. Stay on the H-1044 for 0.5 miles until you reach Red Creek Quarry.

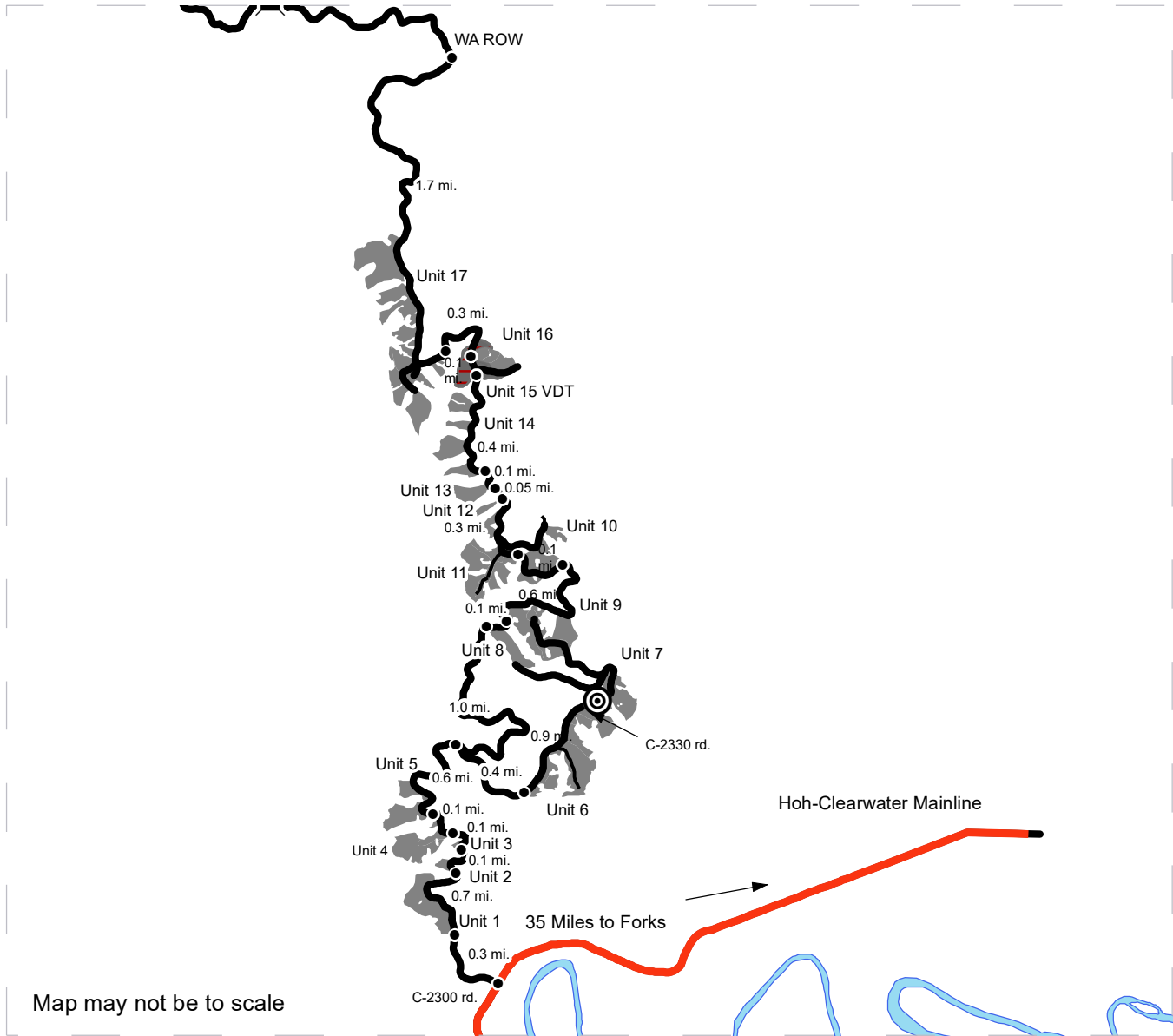
Copper Pit: From the H-1040 intersection with the Hoh-Clearwater Mainline travel South on the Mainline for 11.5 miles to Copper pit on the North side of the road.



DRIVING MAP

SALE NAME: Miller Park VRH VDT
AGREEMENT#: 30-098320
TOWNSHIP(S): T25R12W
TRUST(S): Common School and Indemnity (3)

REGION: Olympic Region
COUNTY(S): Jefferson
ELEVATION RGE: 300'-940'



- Variable Retention Harvest
- Variable Density Thinning
- Haul Route
- Hoh-Clearwater Mainline
- Hauling Route
- Bridge
- Distance Indicator
- Other Feature 2

DRIVING DIRECTIONS:

Unit 1: From Forks travel 15.5 mi. south to the Hoh-Clearwater Mainline. Turn left and continue south for 19.5 mi. and take a right on the C-2300. Continue for 0.3 mi. and Unit 1 will be on the left.
 Unit 2: Continue for 0.7 mi. and Unit 2 will be on the left.
 Unit 3: Continue for 0.1 mi. and Unit 3 will be on the left.
 Unit 4: Continue for 0.1 mi. and Unit 4 will be on the left.
 Unit 5: Continue for 0.1 mi. and Unit 5 will be on the left.
 Unit 6: Continue for 0.6 mi. and turn right on the C-2330 and in 0.4 mi. unit 6 will be on the right.
 Unit 7: Continue for 0.9 mi. and Unit 7 will be on the right.
 Unit 8: From the C-2300 and C-2330 junction continue for 1 mi on the C-2300 and Unit 8 will be on the right.
 Unit 9: Continue for 0.1 mi. and Unit 9 will be on the right.
 Unit 10: Continue for 0.6 mi. and unit 10 will be on the right.
 Unit 11: Continue for 0.1 mi. and Unit 11 will be on the left and right.
 Unit 12: Continue for 0.3 mi. and Unit 12 will be on the left.
 Unit 13: Continue for 0.05 mi. and Unit 13 will be on the left.
 Unit 14: Continue for 0.1 mi. and Unit 14 will be on the left.
 Unit 15: Continue for 0.4 mi. and Unit 15 will be on the left and right.
 Unit 16: Continue for 0.1 mi. and Unit 16 will be on the left and right.
 Unit 17: Continue for 0.3 mi. and Unit 17 will be on the left.
 WA ROW: Continue for 1.7 mi. and the Waste Area Right-of-way will be on the left.





TIMBER NOTICE OF SALE

SALE NAME: THIN IT TO WIN IT

AGREEMENT NO: 30-98534

AUCTION: July 24, 2019 starting at 10:00 a.m., Olympic Region Office, Forks, WA

COUNTY: Jefferson

SALE LOCATION: Sale located approximately 49 miles south of Forks, WA

PRODUCTS SOLD AND SALE AREA:

All timber as described in Schedule C, except those trees as described in Schedule B, downed red cedar, or timber that has been on the ground for five years or more (five years is defined by more than 1.5 inches of sap rot); bounded by timber sale boundary tags, timber type change, the Q-1000, Q-1400, Q-1430, Q-1600, Q-1800N and Q-1800S Roads in Unit 1; timber sale boundary tags in Unit 2; timber sale boundary tags and the Q-1820 Road in Unit 3; timber sale boundary tags and the Q-2300 Road in Unit 4;

All timber bounded by right of way boundary tags in Unit 5.

Located on part(s) of Sections 25 all in Township 24 North, Range 12 West, Sections 13, 14, 20, 26, 27, 28, 29, 30, 31, 32, 33, 34, 35 and 36 all in Township 24 North, Range 11 West, W.M., containing 1693 acres, more or less.

CERTIFICATION: This sale is certified under the Sustainable Forestry Initiative® program Standard (cert no: PwC-SFIFM-513)

ESTIMATED SALE VOLUMES AND QUALITY:

Table with columns: Species, Avg Ring DBH, Ring Count, Total MBF, Total Tons, Price \$/Ton, and MBF by Grade (1P, 2P, 3P, SM, 1S, 2S, 3S, 4S, UT). Rows include Hemlock, Douglas fir, Red cedar, Red alder, and Sale Total.

MINIMUM BID: \$6.10/ton (est. value \$687,000.00)

BID METHOD: Sealed Bids

PERFORMANCE SECURITY:

\$100,000.00

SALE TYPE: Tonnage Scale

EXPIRATION DATE: October 31, 2022

ALLOCATION: Export Restricted

BIDDABLE SPECIES: Hemlock, Douglas fir combined

BID DEPOSIT: \$68,700.00 or Bid Bond. Said deposit shall constitute an opening bid at the appraised price.

HARVEST METHOD: 4% - Cable/96% - Ground. No rubber tired skidders allowed unless skidding and rutting requirements can be met and a harvest plan is submitted and approved. For murrelet restrictions, there will be no activities allowed, other than haul, from one hour before to two hours after official sunrise and from one hour before to one hour after official sunset from April 1 through September 23.



TIMBER NOTICE OF SALE

ROADS: 23.30 stations of required construction. 37.95 stations of optional construction. 12.50 stations of required pre-haul maintenance. 1406.00 stations of optional pre-haul maintenance. 87.50 stations of decommissioning. On the following roads, any work, other than haul, is not permitted from one hour before to two hours after official sunrise and from one hour before to one hour after official sunset from April 1 through September 23, due to marbled murrelet restrictions: 19+50 Spur (17+80 - 19+50), Q-1800S (36+00 - 69+00), 6+25 Spur (5+25-6+25), Q-1821 (9+30 - 11+30), Q-1440 (22+60 - 30+60), Q-1800N (59+35 - 117+75, 202+75 - 204+15).

In Kostly Creek Pit, the Purchaser must strip two acres as marked in the field. They shall also develop pit as per pit plan and manufacture and screen 10,000 cu yds of 1 1/2 inch minus crushed rock before December 31, 2020 - see road plan for more details. Road construction will not be permitted from October 1 to June 30 unless authorized in writing by the Contract Administrator for bridge replacement, removal and/or maintenance on the Q-1400 Road at stations 33+00, 73+90, and 11+30; October 1 through May 30 or with a winter haul plan approved by Contract Administrator (see road plan clause 1-26) for timber and rock haul on the Q-1400 Road at stations 33+00 - 103+00 and on the Q-1440, Q-1441, Q-1800M., Q-2000, Q-2300, and Q-2330 Roads; construction work on the Q-1205 at stations 0+00 - 5+20, installation of above ground pipe over stream on the Q-1400 at station 33+00 and for installation of an 18" x 30' cross drain, 45 degree elbow and 18" x 50' doubled walled pipe across stream on the Q-1000 station are dry weather only operations as directed by the Contract Administrator. The hauling of forest products will not be permitted from October 1 to May 30 unless authorized in writing by the Contract Administrator or with a winter haul plan for the Q-1400 (33+00-103+00), Q-1440, Q-1441, Q-1800N, Q-2000, Q-2300 or the Q-2330 Roads.

ACREAGE DETERMINATION

CRUISE METHOD: Sale acreage was 100% GPS'd. Sale units were cruised using a variable plot method.

FEES: \$217,600.00 is due on day of sale. \$1.09 per ton is due upon removal. These are in addition to the bid price.

SPECIAL REMARKS: There are locked gates on the Q-1300, Q-1440, Q-1500, Q-1810, Q-1820 and Q-2000 Roads - contact the Olympic Region Dispatch Center at 360-374-2811 to obtain a AA-1 key.

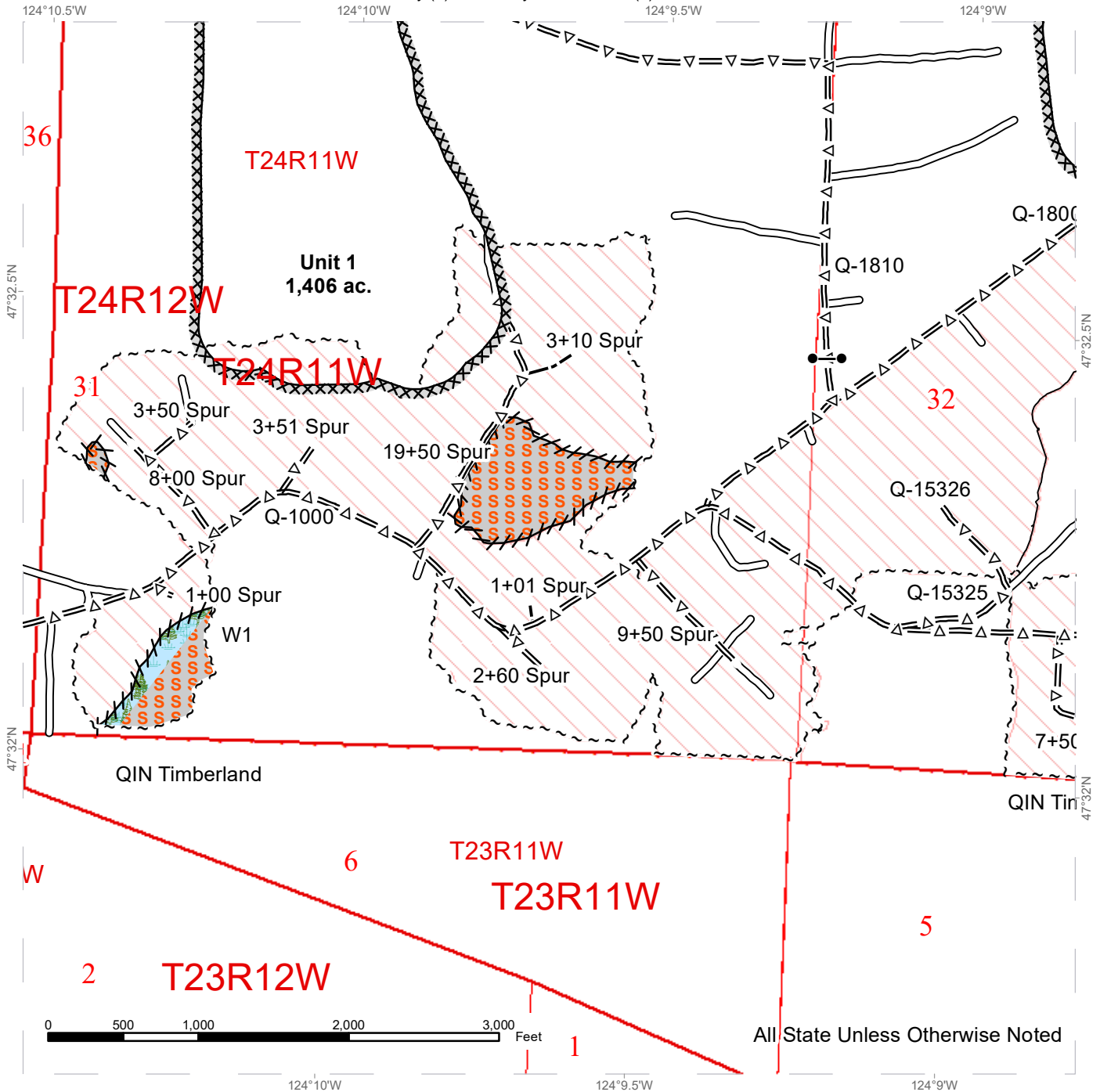
Road work is currently scheduled to take place on the Q-1800N and Q-2300 Roads, which will result in the roads being closed for up to one month at a time. State shall give at least two week's notice to Purchaser before closure begins.

Purchaser shall supply and construct two bridges - see road plan for details.

TIMBER SALE MAP

SALE NAME: THIN IT TO WIN IT
AGREEMENT #: 30-098534
TOWNSHIP(S): T24R11W
TRUST(S): Common School and Indemnity (3), University - Transferred (5)

REGION: Olympic Region
COUNTY(S): Jefferson
ELEVATION RGE: 280-1160'



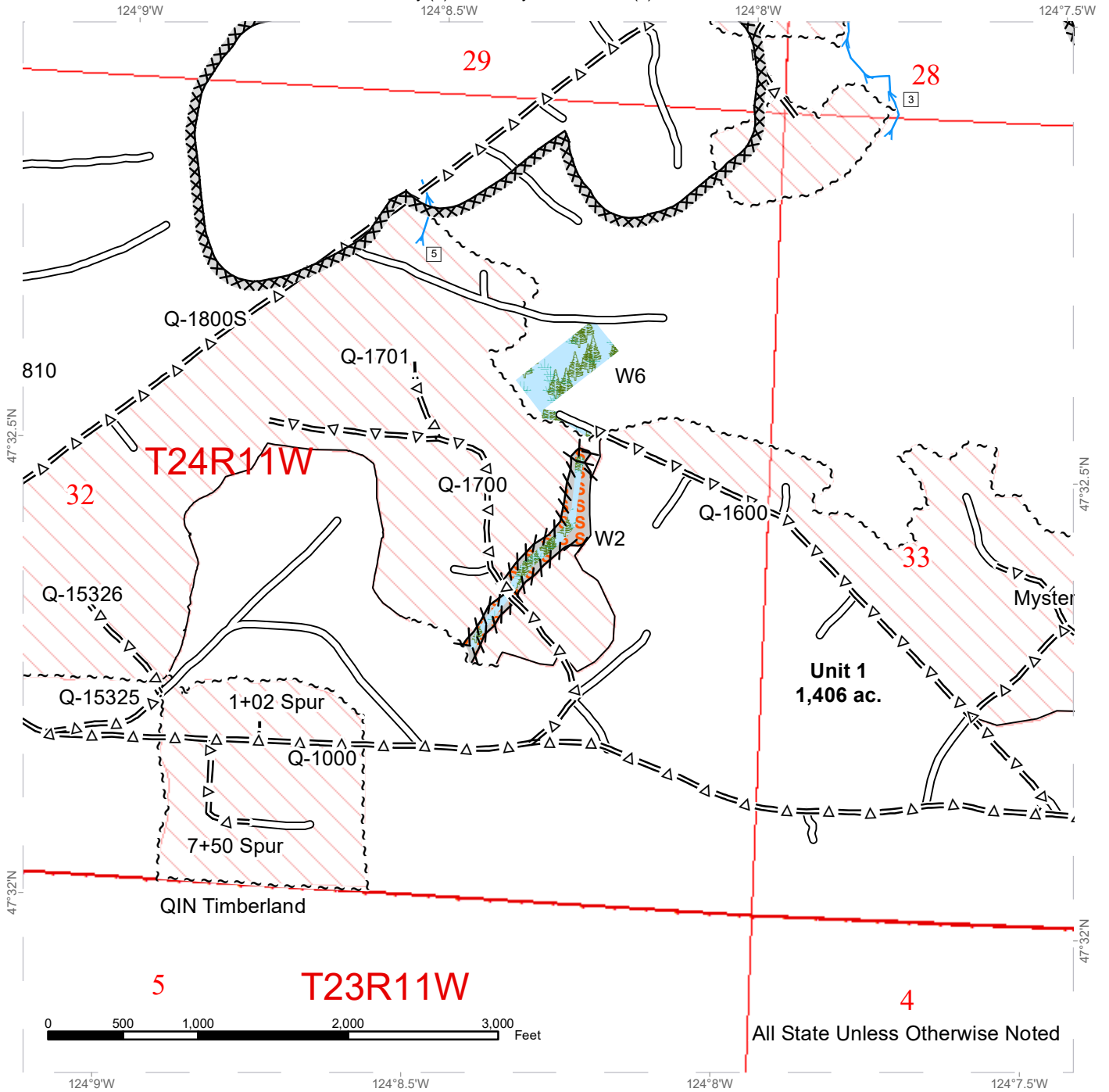
Legend

MM_Timing	Required Pre-Haul Maintenance	Leave Tree Tags	Streams	Public Land Survey Townships
Gate (AA1 Lock)	Required Construction	Right of Way Tags	Skip	Public Land Survey Sections
Rock Pit	Required Reconstruction	Right of Way Tags	Forested Wetland	DNR Managed Lands
Waste Area	Optional Pre-Haul Maintenance	Right of Way Tags	Variable Density Thinning	Stream Type
Existing Roads	Optional Construction	Take / Removal Trees	Property Line	Stream Type Break
	Optional Reconstruction	Timber Type Change		
	Sale Boundary Tags			
	Special Mgmt Area			

TIMBER SALE MAP

SALE NAME: THIN IT TO WIN IT
AGREEMENT #: 30-098534
TOWNSHIP(S): T24R11W
TRUST(S): Common School and Indemnity (3), University - Transferred (5)

REGION: Olympic Region
COUNTY(S): Jefferson
ELEVATION RGE: 280-1160'



All State Unless Otherwise Noted

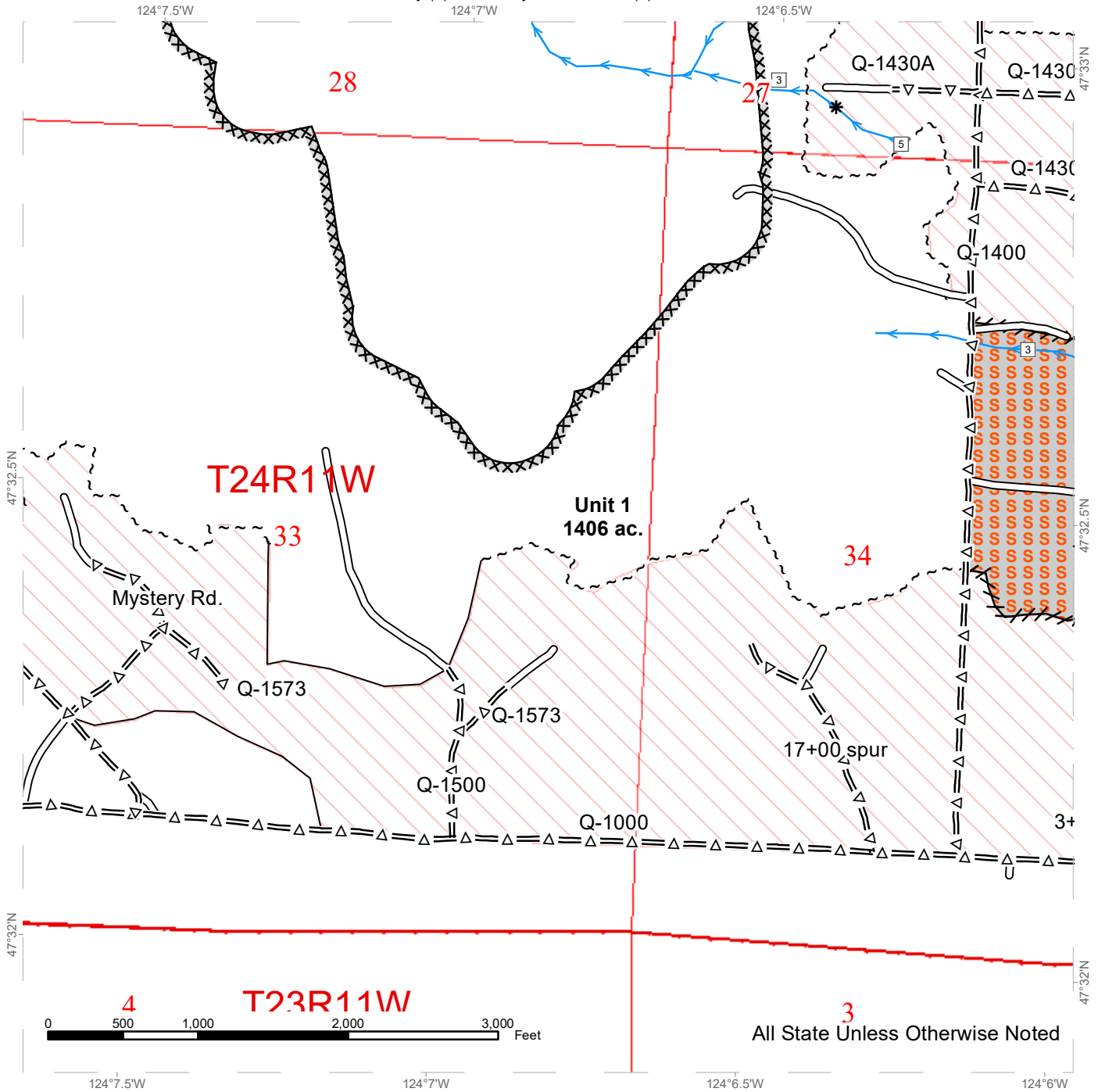
Legend			
M/M_Timing	Required Pre-Haul Maintenance	Leave Tree Tags	Streams
Gate (AA1 Lock)	Required Construction	Right of Way Tags	Skip
Rock Pit	Required Reconstruction	Right of Way Tags	Forested Wetland
Waste Area	Optional Pre-Haul Maintenance	Right of Way Tags	Variable Density Thinning
Existing Roads	Optional Construction	Take / Removal Trees	Public Land Survey Townships
	Optional Reconstruction	Property Line	Public Land Survey Sections
	Sale Boundary Tags	Skip	DNR Managed Lands
Special Mgmt Area	Timber Type Change	Stream Type Break	Stream Type



TIMBER SALE MAP

SALE NAME: THIN IT TO WIN IT
AGREEMENT #: 30-098534
TOWNSHIP(S): T24R11W
TRUST(S): Common School and Indemnity (3), University - Transferred (5)

REGION: Olympic Region
COUNTY(S): Jefferson
ELEVATION RGE: 280-1160'



All State Unless Otherwise Noted

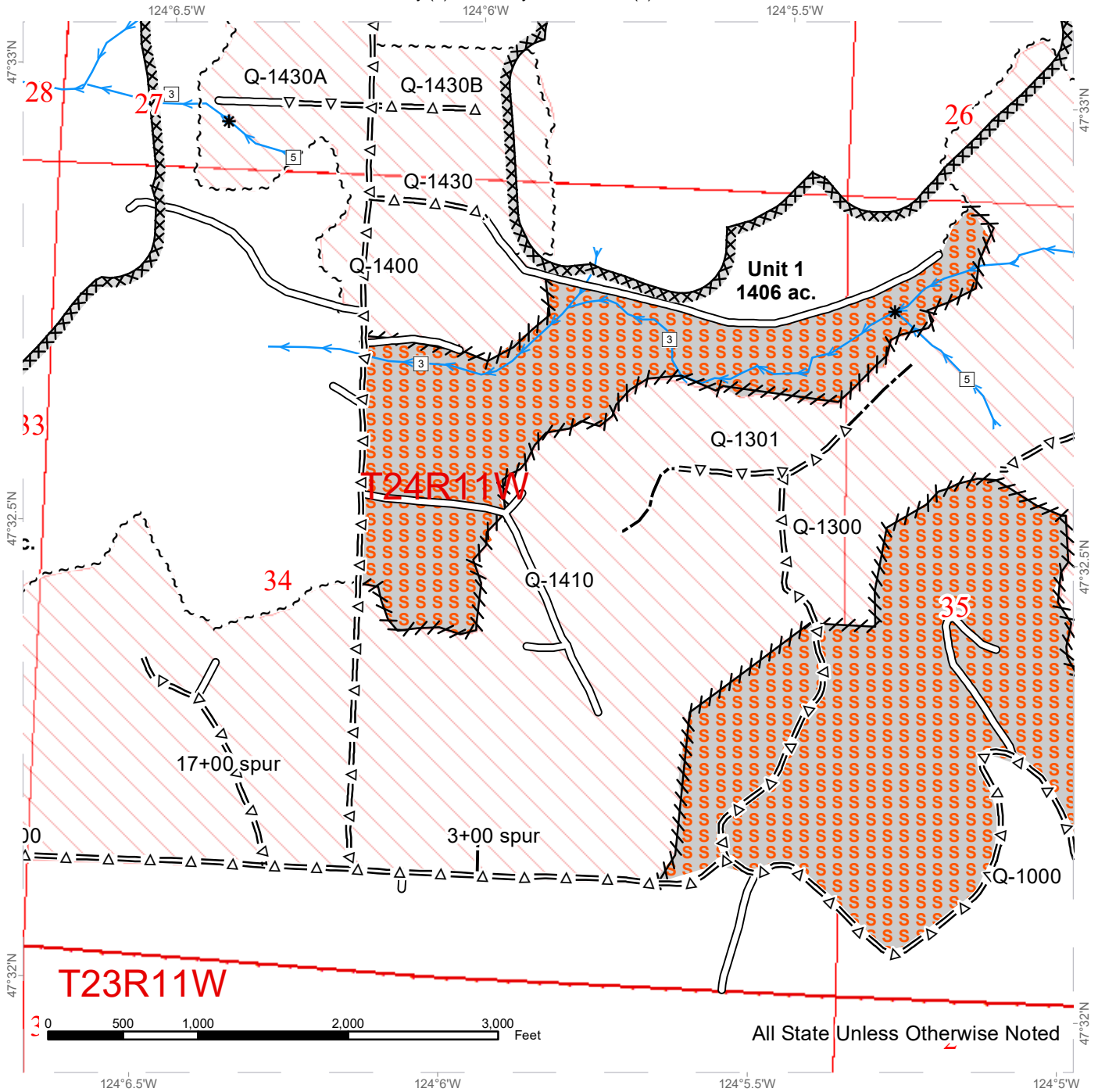
Legend			
	MM_Timing		Required Pre-Haul Maintenance
	Gate (AA1 Lock)		Required Construction
	Rock Pit		Required Reconstruction
	Waste Area		Optional Pre-Haul Maintenance
	Existing Roads		Optional Construction
	Sale Boundary Tags		Optional Reconstruction
	Special Mgmt Area		Right of Way Tags
	Right of Way Tags		Right of Way Tags
	Leave Tree Tags		Take / Removal Trees
	Streams		Property Line
	Skip		Skip
	Forested Wetland		Timber Type Change
	Variable Density Thinning		Stream Type Break
	Public Land Survey Townships		Stream Type
	Public Land Survey Sections		
	DNR Managed Lands		



TIMBER SALE MAP

SALE NAME: THIN IT TO WIN IT
AGREEMENT #: 30-098534
TOWNSHIP(S): T24R11W
TRUST(S): Common School and Indemnity (3), University - Transferred (5)

REGION: Olympic Region
COUNTY(S): Jefferson
ELEVATION RGE: 280-1160'



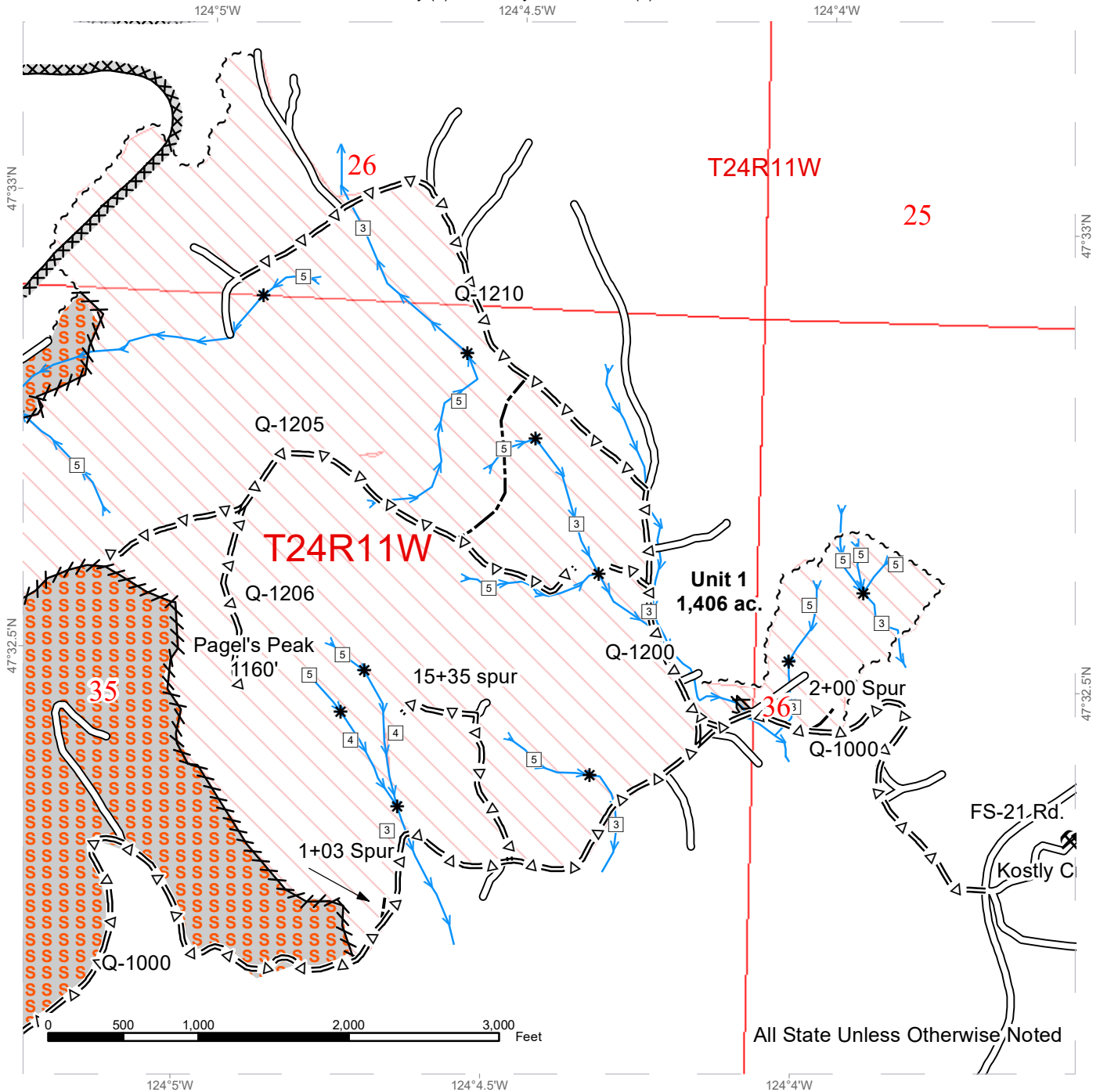
Legend			



TIMBER SALE MAP

SALE NAME: THIN IT TO WIN IT
AGREEMENT #: 30-098534
TOWNSHIP(S): T24R11W
TRUST(S): Common School and Indemnity (3), University - Transferred (5)

REGION: Olympic Region
COUNTY(S): Jefferson
ELEVATION RGE: 280-1160'



All State Unless Otherwise Noted

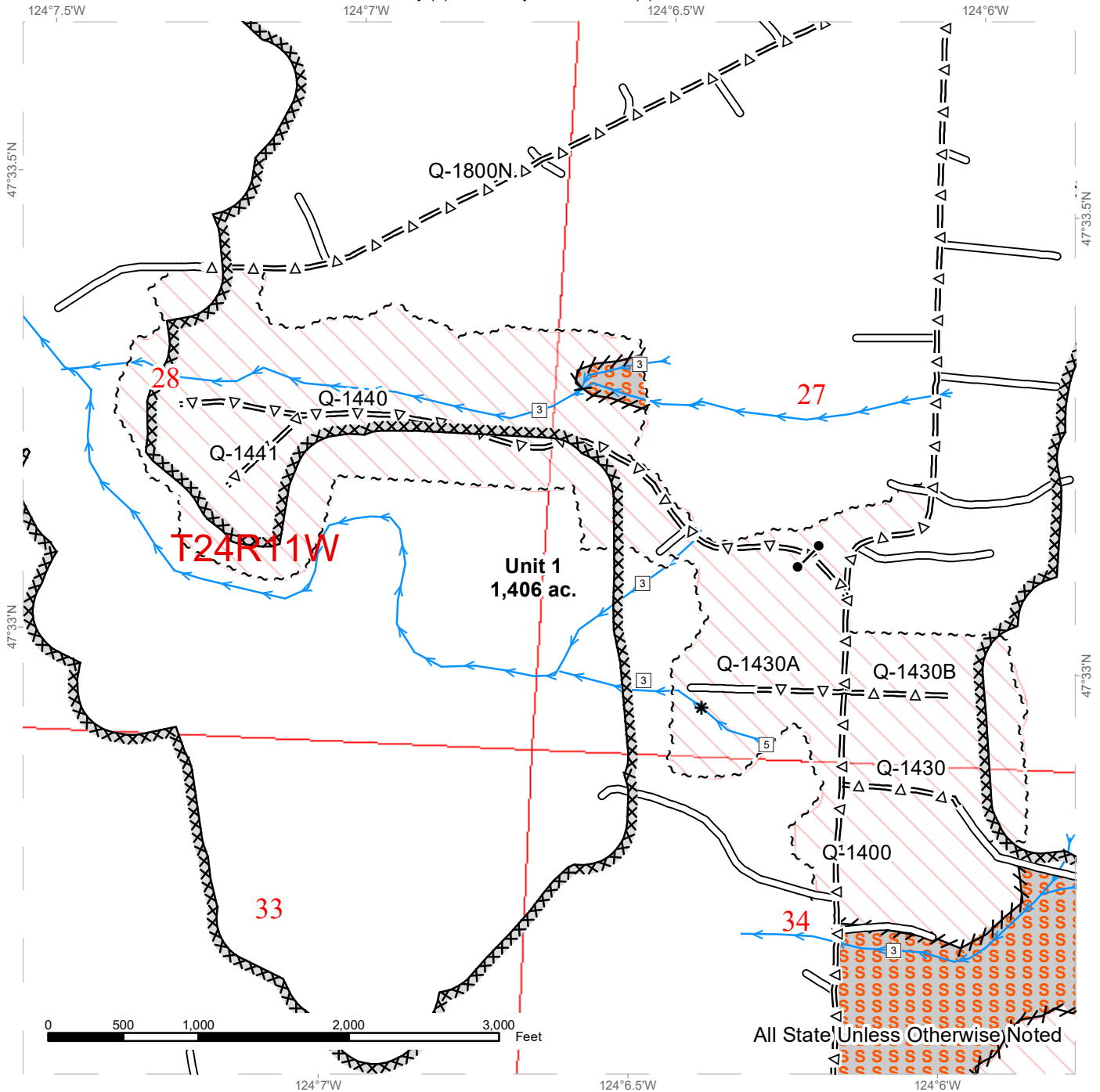
Legend			
MM_Timing	Required Pre-Haul Maintenance	Leave Tree Tags	Streams
Gate (AA1 Lock)	Required Construction	Right of Way Tags	Skip
Rock Pit	Required Reconstruction	Right of Way Tags	Forested Wetland
Waste Area	Optional Pre-Haul Maintenance	Right of Way Tags	Variable Density Thinning
Existing Roads	Optional Construction	Take / Removal Trees	Public Land Survey Townships
	Optional Reconstruction	Property Line	Public Land Survey Sections
	Sale Boundary Tags	Skip	DNR Managed Lands
	Special Mgmt Area	Timber Type Change	Stream Type
			Stream Type Break



TIMBER SALE MAP

SALE NAME: THIN IT TO WIN IT
AGREEMENT #: 30-098534
TOWNSHIP(S): T24R11W
TRUST(S): Common School and Indemnity (3), University - Transferred (5)

REGION: Olympic Region
COUNTY(S): Jefferson
ELEVATION RGE: 280-1160'



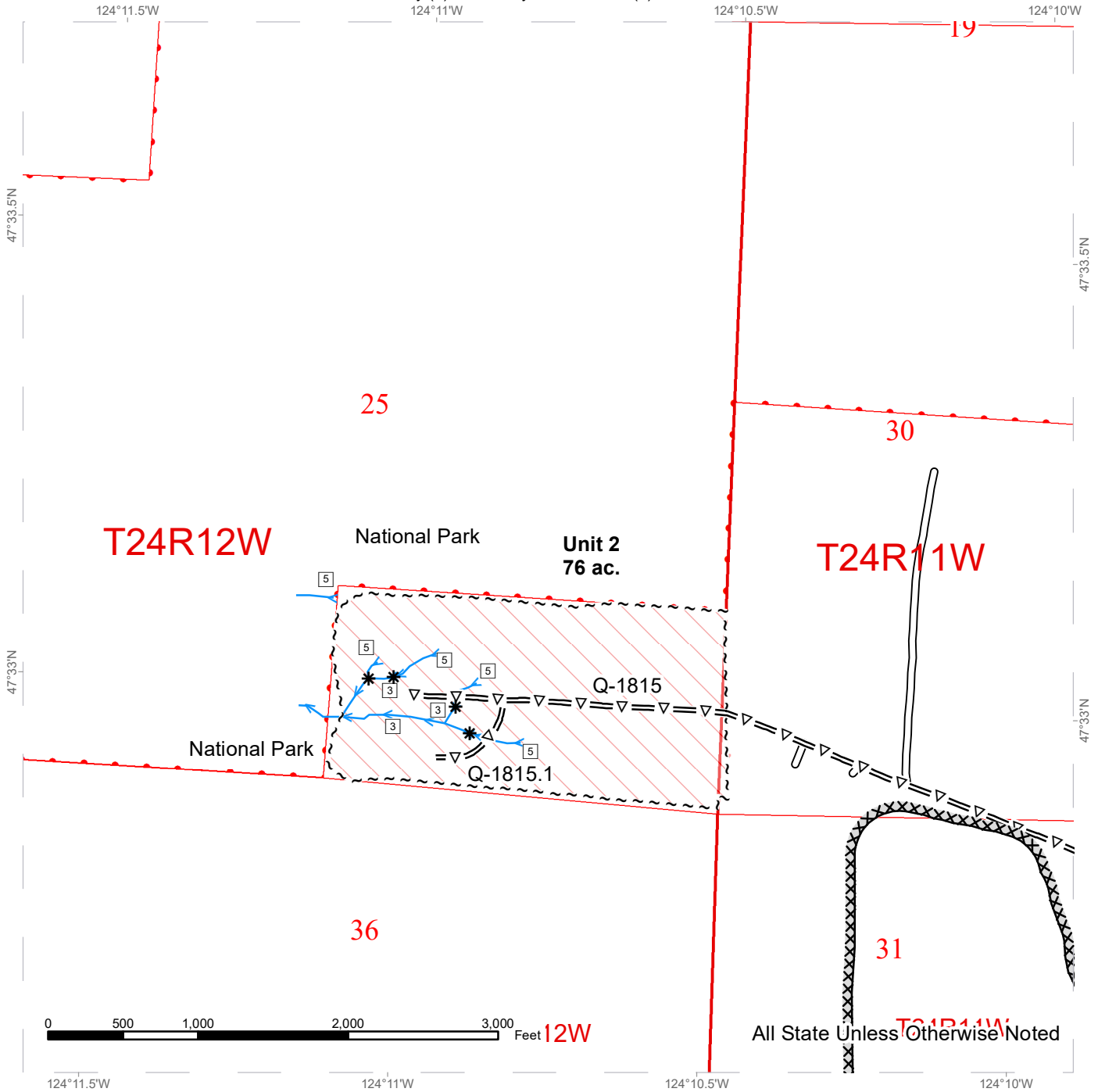
Legend			
	MM_Timing		Required Pre-Haul Maintenance
	Gate (AA1 Lock)		Required Construction
	Rock Pit		Required Reconstruction
	Waste Area		Optional Pre-Haul Maintenance
	Existing Roads		Optional Construction
			Optional Reconstruction
			Sale Boundary Tags
			Special Mgmt Area
			Leave Tree Tags
			Right of Way Tags
			Right of Way Tags
			Take / Removal Trees
			Property Line
			Skip
			Timber Type Change
			Streams
			Skip
			Forested Wetland
			Variable Density Thinning
			Public Land Survey Townships
			Public Land Survey Sections
			DNR Managed Lands
			Stream Type
			Stream Type Break



TIMBER SALE MAP

SALE NAME: THIN IT TO WIN IT
AGREEMENT #: None
TOWNSHIP(S): T24R12W
TRUST(S): Common School and Indemnity (3), University - Transferred (5)

REGION: Olympic Region
COUNTY(S): Jefferson
ELEVATION RGE: 280-1160'



Legend

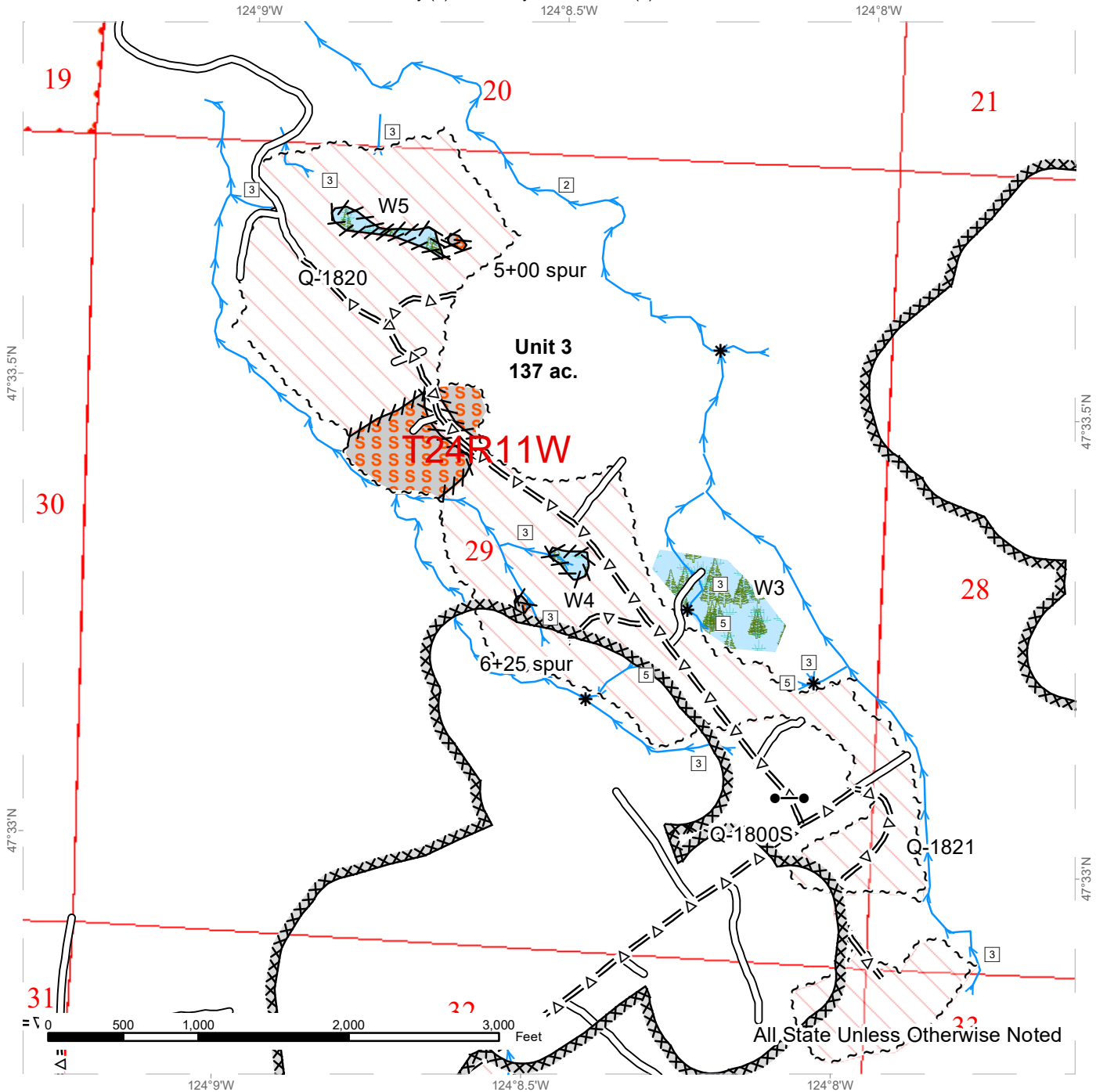
MM_Timing	Required Pre-Haul Maintenance	Leave Tree Tags	Streams	Public Land Survey Townships
Gate (AA1 Lock)	Required Construction	Right of Way Tags	Skip	Public Land Survey Sections
Rock Pit	Required Reconstruction	Right of Way Tags	Forested Wetland	DNR Managed Lands
Waste Area	Optional Pre-Haul Maintenance	Right of Way Tags	Variable Density Thinning	Stream Type
Existing Roads	Optional Construction	Take / Removal Trees	Property Line	Stream Type Break
	Optional Reconstruction	Sale Boundary Tags	Skip	
	Special Mgmt Area	Timber Type Change		



TIMBER SALE MAP

SALE NAME: THIN IT TO WIN IT
AGREEMENT #: 30-098534
TOWNSHIP(S): T24R11W
TRUST(S): Common School and Indemnity (3), University - Transferred (5)

REGION: Olympic Region
COUNTY(S): Jefferson
ELEVATION RGE: 280-1160'



Legend

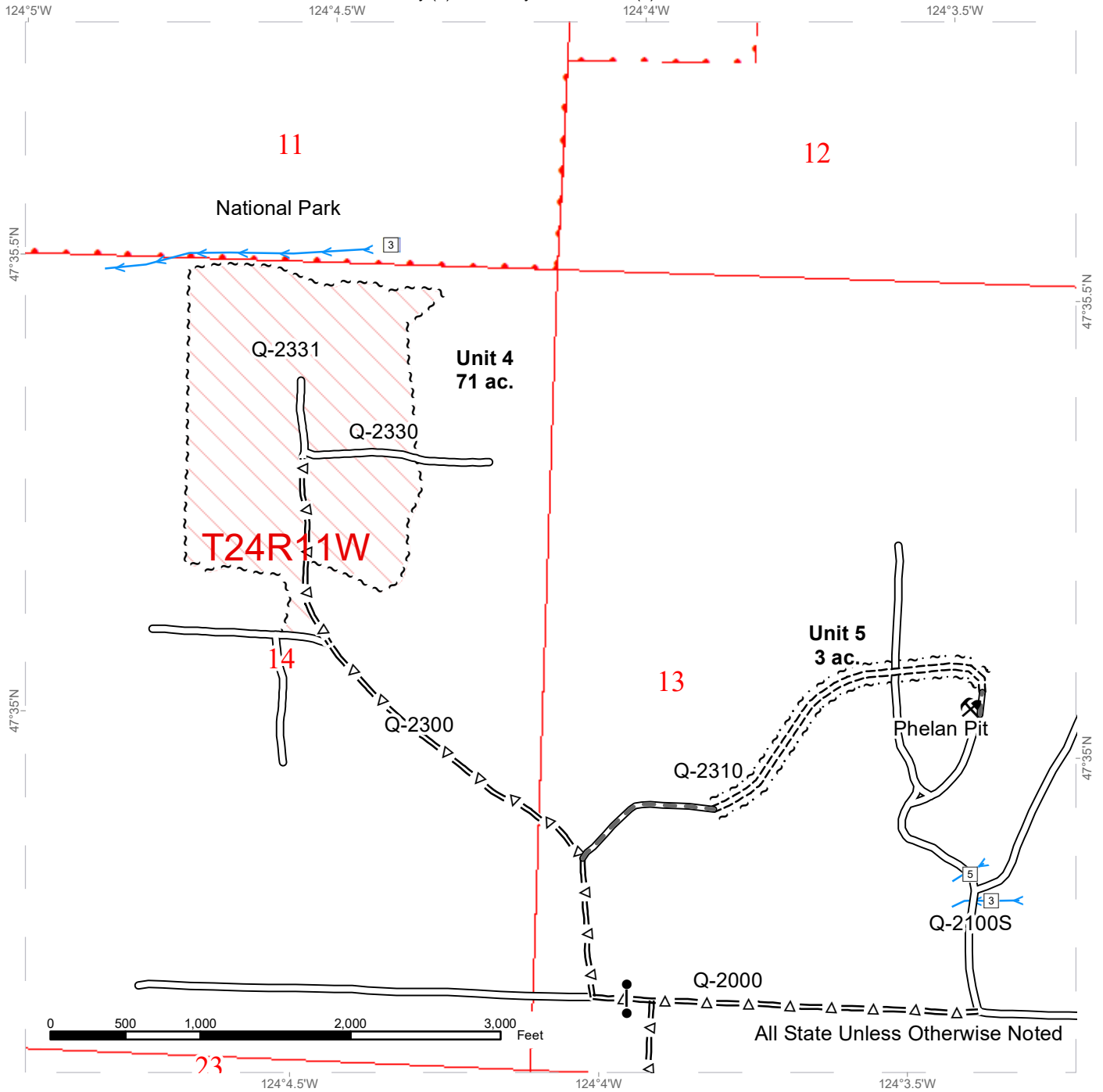
MM_Timing	Required Pre-Haul Maintenance	Leave Tree Tags	Streams	Public Land Survey Townships
Gate (AA1 Lock)	Required Construction	Right of Way Tags	Skip	Public Land Survey Sections
Rock Pit	Required Reconstruction	Right of Way Tags	Forested Wetland	DNR Managed Lands
Waste Area	Optional Pre-Haul Maintenance	Right of Way Tags	Variable Density Thinning	Stream Type
Existing Roads	Optional Construction	Take / Removal Trees	Property Line	Stream Type Break
	Optional Reconstruction	Sale Boundary Tags	Skip	
	Special Mgmt Area	Timber Type Change		



TIMBER SALE MAP

SALE NAME: THIN IT TO WIN IT
AGREEMENT #: 30-098534
TOWNSHIP(S): T24R11W
TRUST(S): Common School and Indemnity (3), University - Transferred (5)

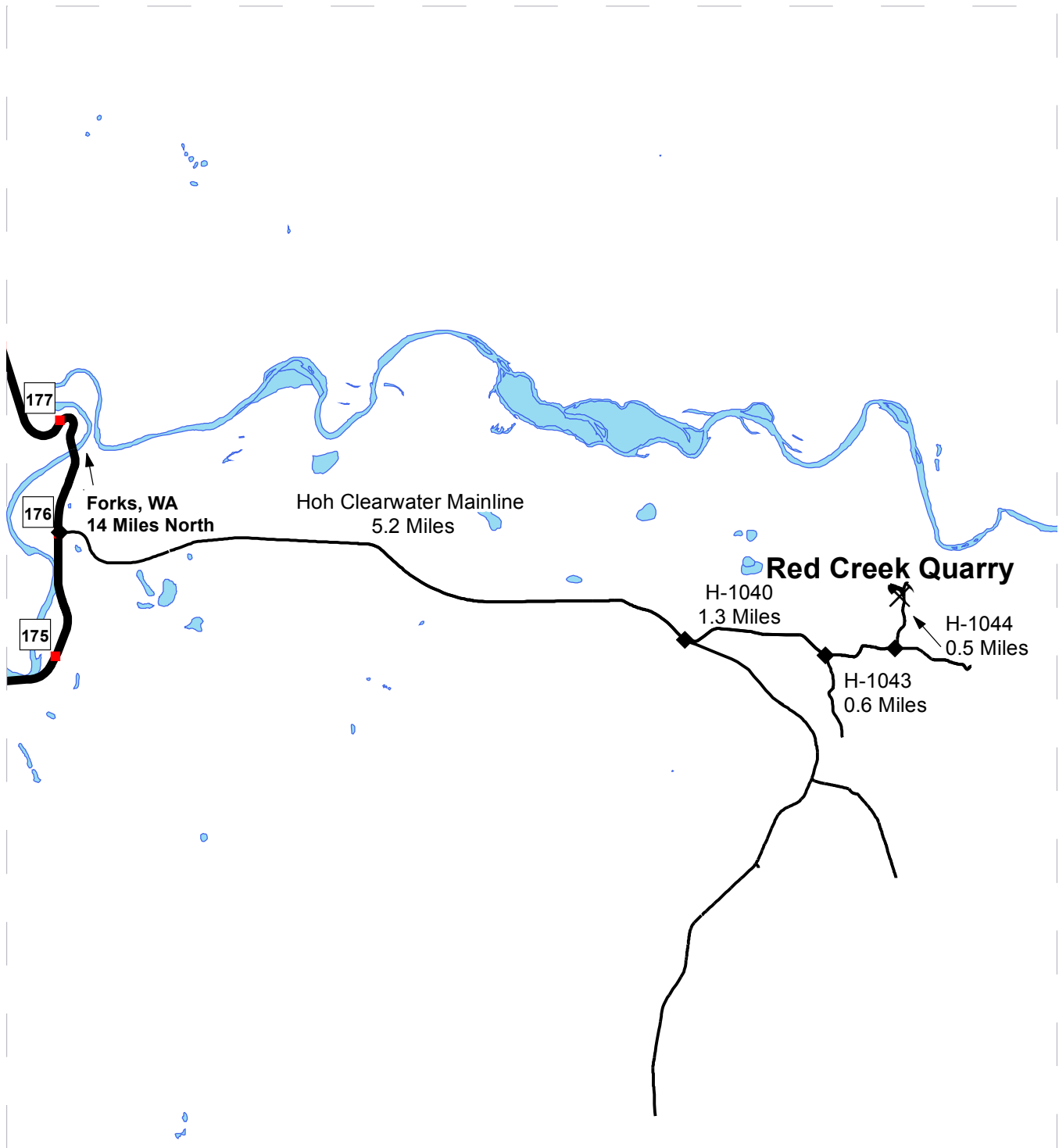
REGION: Olympic Region
COUNTY(S): Jefferson
ELEVATION RGE: 280-1160'



Legend			
	MM_Timing		Required Pre-Haul Maintenance
	Gate (AA1 Lock)		Required Construction
	Rock Pit		Required Reconstruction
	Waste Area		Optional Pre-Haul Maintenance
	Existing Roads		Optional Construction
			Optional Reconstruction
			Sale Boundary Tags
			Special Mgmt Area
			Leave Tree Tags
			Right of Way Tags
			Right of Way Tags
			Take / Removal Trees
			Property Line
			Skip
			Timber Type Change
			Streams
			Skip
			Forested Wetland
			Variable Density Thinning
			Public Land Survey Townships
			Public Land Survey Sections
			DNR Managed Lands
			Stream Type
			Stream Type Break



DRIVING MAP: Red Creek Quarry



	Open Water
	Highways
	Pits
	Gates
	Haul Route
	Milepost Markers
	Distance Indicator

DRIVING DIRECTIONS:

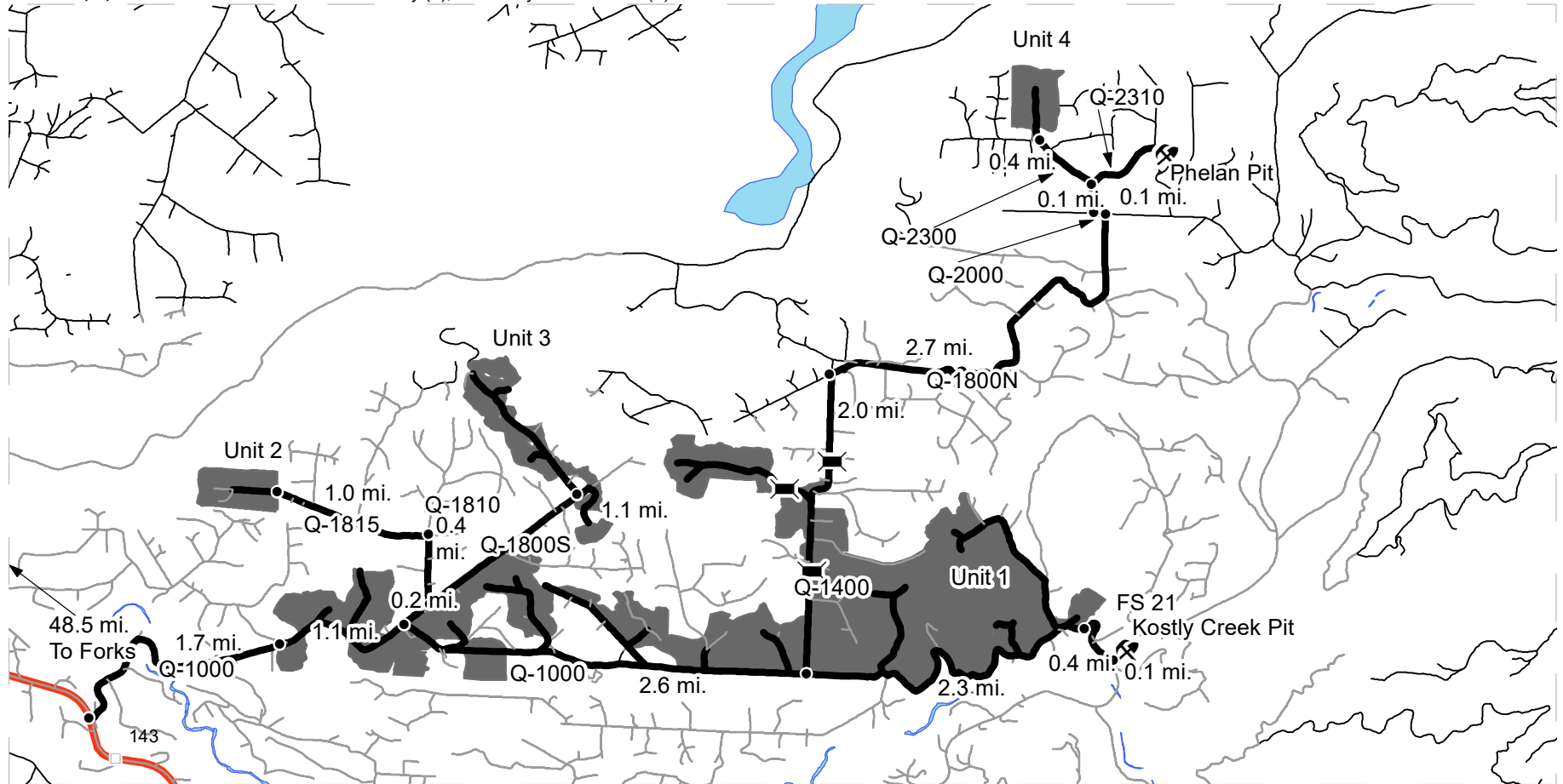
From Forks: Head south approximately 14 miles to mile post 176 on US 101, and turn left onto the Hoh-Clearwater Mainline. Head east approximately 5.2 miles to the H-1040 and continue 1.3 miles and turn left onto the H-1043. Continue along the H-1043 0.6 miles and turn left onto the H-1044, go 0.5 miles and Red Creek Quarry is on the left.



DRIVING MAP

SALE NAME: THIN IT TO WIN IT
AGREEMENT#:
TOWNSHIP(S): T24R11W, T24R12W
TRUST(S): Common School and Indemnity (3), University - Transferred (5)

REGION: Olympic Region
COUNTY(S): Jefferson
ELEVATION RGE: 280-1160'



- Timber Sale Unit
- Haul Route
- Other Road
- Milepost Markers

Driving Directions:
 Unit 1: From Forks, drive 48.5 mi. south on US 101 and turn left on the Q-1000 Rd. Drive 1.7 mi. to the beginning of Unit 1. Unit 1 continues on the Q-1000 for 5 mi.
 Unit 2: From the beginning of Unit 1, continue 1.1 mi. on the Q-1000 and turn left on the Q-1800S. Continue 0.2 mi. and turn left on the Q-1810. Continue 0.4 mi. and turn left on the Q-1815. Unit 2 is located 1.0 mi. further on the Q-1815.
 Unit 3: From the Q-1000/Q-1800S jct., continue 1.1 mi. on the Q-1800S to Unit 3.
 Unit 4: Continue 2.6 mi. past the Q-1000/Q-1800S jct. on the Q-1000 and turn left on the Q-1400. Continue 2.0 mi. on the Q-1400 and turn right on the Q-1800N. Continue 2.7 mi. and turn left on the Q-2000 (gated, AA1 lock). Continue 0.1 mi. and turn right on the Q-2300. Drive 0.1 miles to 2300/2310 jct. and stay left for 0.4 miles mi. to Unit 4.
 Kostly Creek Pit: From the Q-1000/Q-1400 jct., continue 2.7 mi. on the Q-1000 to the jct. with the FS-21 Rd. Cross the FS-21 Rd. into Kostly Creek Pit (0.1 mi.).
 Phelan Pit: From the Q-2000/Q-2300 jct., drive 0.1 mi. on the Q-2300 and turn right on the Q-2310 (to be constructed). Continue 0.5 mi. to Phelan Pit.



TIMBER NOTICE OF SALE

Use the following rates for estimating taxable stumpage:

Harvest Cost = \$0.00 per MBF for sorts 1 and 2, \$0.00 per Ton for sort 3 and \$25.00 per Ton for sort 4.

Hauling Services Payment Rate per Ton
= (Base Rate + Mileage Rate) x (Contractor's hauling bid factor)

Base Rate = \$2.35 per ton

Mileage Rate = $(\$0.16 \times C \text{ miles}) + (\$0.11 \times A \text{ miles}) \times \text{Fuel Index Factor}$

ARRF = \$26.00 per MBF for sorts 1 and 2, \$4.13 per MBF for sort 3 and \$0.00 per MBF for sort 4.

Note: To calculate ARRF rates per ton use the tons\mbf conversion factor in the table above.

CONFIRMATION: Each sort is subject to confirmation following auction. Sorts will not be confirmed until at least 10 days after auction. Final contract award is contingent upon the State's haul cost analysis. Actual haul route may vary and is subject to change at the State's discretion.

SPECIAL REMARKS: The successful Purchaser(s) will be required to purchase logs from the sale area upon delivery to their location specified in the bid submitted. Logs will be delivered to the Purchaser's delivery location by the State's contract harvester. Purchaser is responsible for weighing and scaling costs. All tonnage loads will be weighed and all mbf loads will be scaled at State approved locations. The State reserves the right to determine where logs are authorized to be scaled and weighed.

Unit 1 is heavily infested with Douglas fir Tussock Moth. Moths may cause an allergic reaction called tussockosis. Itching, rashes and watery eyes are a common complaint. Due to this infestation, Unit 1 start date shall be no later than 08/09/2019 with the completion of harvesting and delivery before 12/01/2019.

Cable systems are permitted.

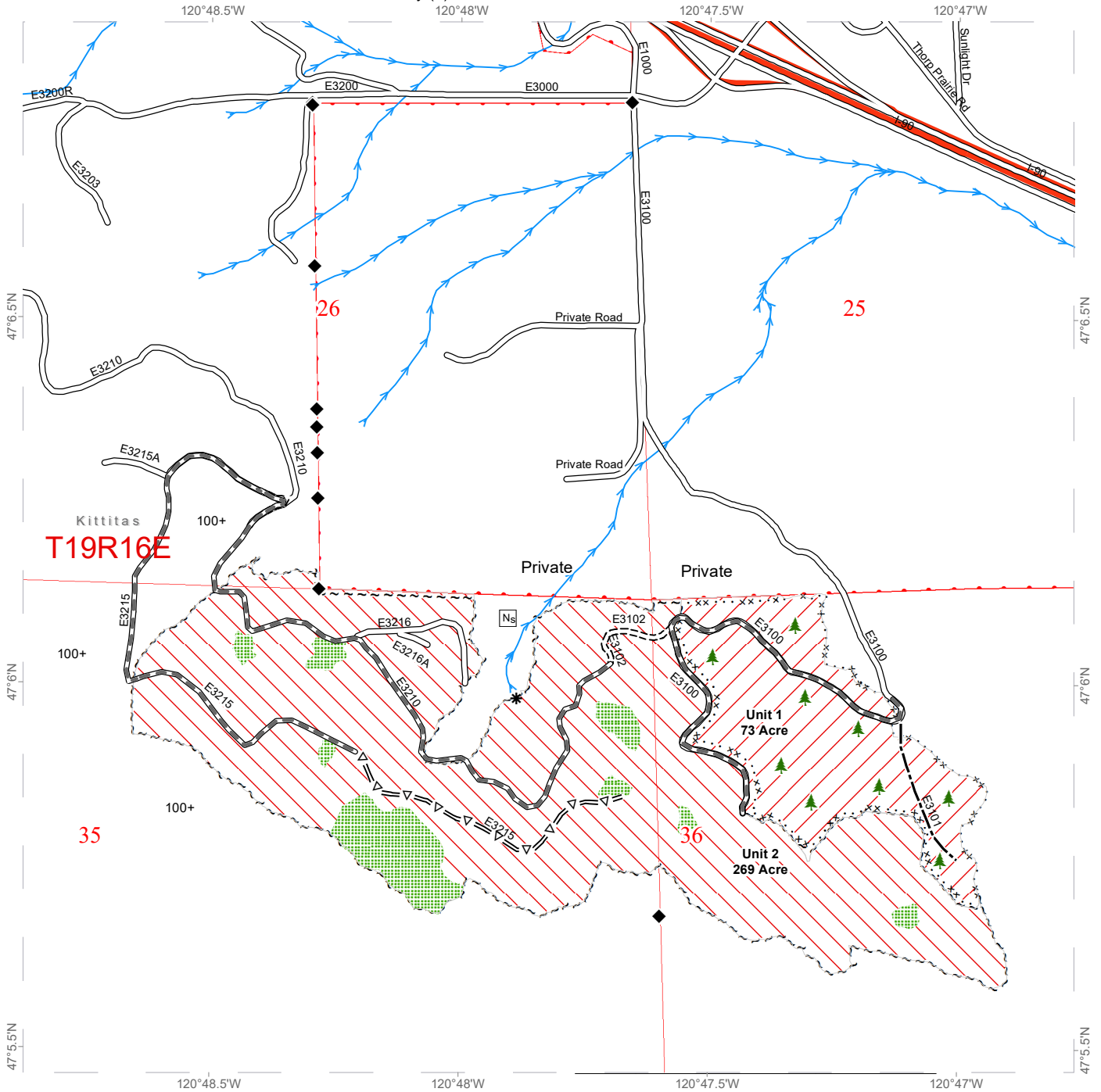
Purchasers of these sorts will be eligible to receive the EARR tax credit.

For more information regarding this log sort sale visit our web site:
<http://www.dnr.wa.gov/programs-and-services/product-sales-and-leasing/timber-sales/timber-auction-packets>. If you have questions call Travis Serdar at the Southeast Region Office at (509)312-5247 or Steve Teitzel at the Product Sales and Leasing Division Office in Olympia at (360)902-1741.

TIMBER SALE MAP

SALE NAME: Q JUSTIFY SORTS
AGREEMENT #: 30-098347
TOWNSHIP(S): T19R16E
TRUST(S): Common School and Indemnity (3)

REGION: Southeast Region
COUNTY(S): Kittitas
ELEVATION RGE: 2400-3160



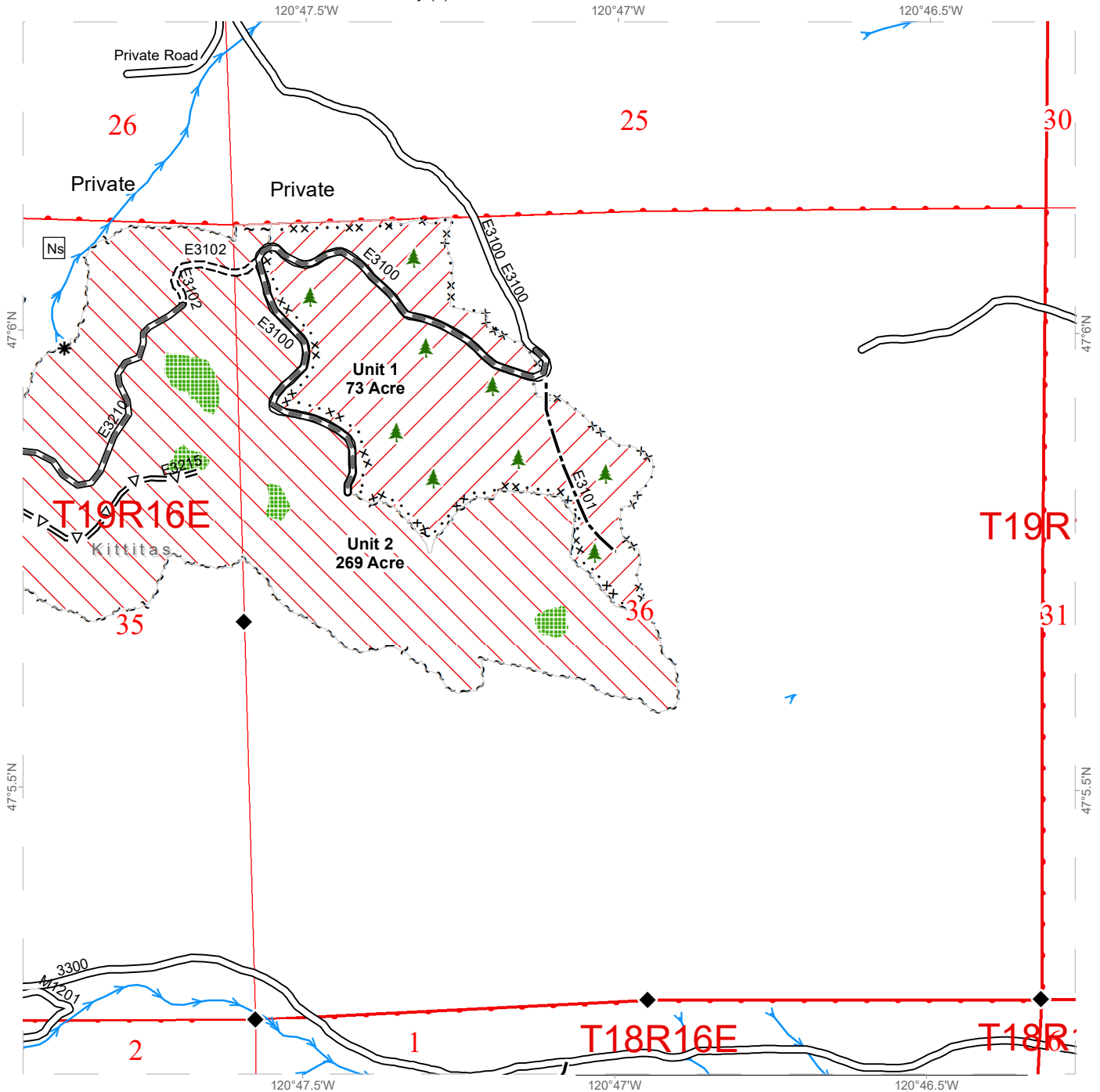
Legend					
~ ~ ~	Sale Boundary Tags	▬▬▬	Required Pre-Haul Maintenance	□	Stream Type
▨	Leave Tree Area	=Δ=	Optional Pre-Haul Maintenance	*	Stream Type Break
▧	Variable Retention Harvest	▬▬▬▬	Required Construction	→	Streams
▩	Thinning	▬▬▬▬▬	Existing Roads	...xx	Special Mgmt Area Tags
▭	Public Land Survey Sections	▬	Leave Tree Area Symbol	—●—●—●	Property Line
▭	Public Land Survey Townships	◆	Survey Monument		



TIMBER SALE MAP

SALE NAME: Q JUSTIFY SORTS
AGREEMENT #: 30-098347
TOWNSHIP(S): T19R16E
TRUST(S): Common School and Indemnity (3)

REGION: Southeast Region
COUNTY(S): Kittitas
ELEVATION RGE: 2400-3160

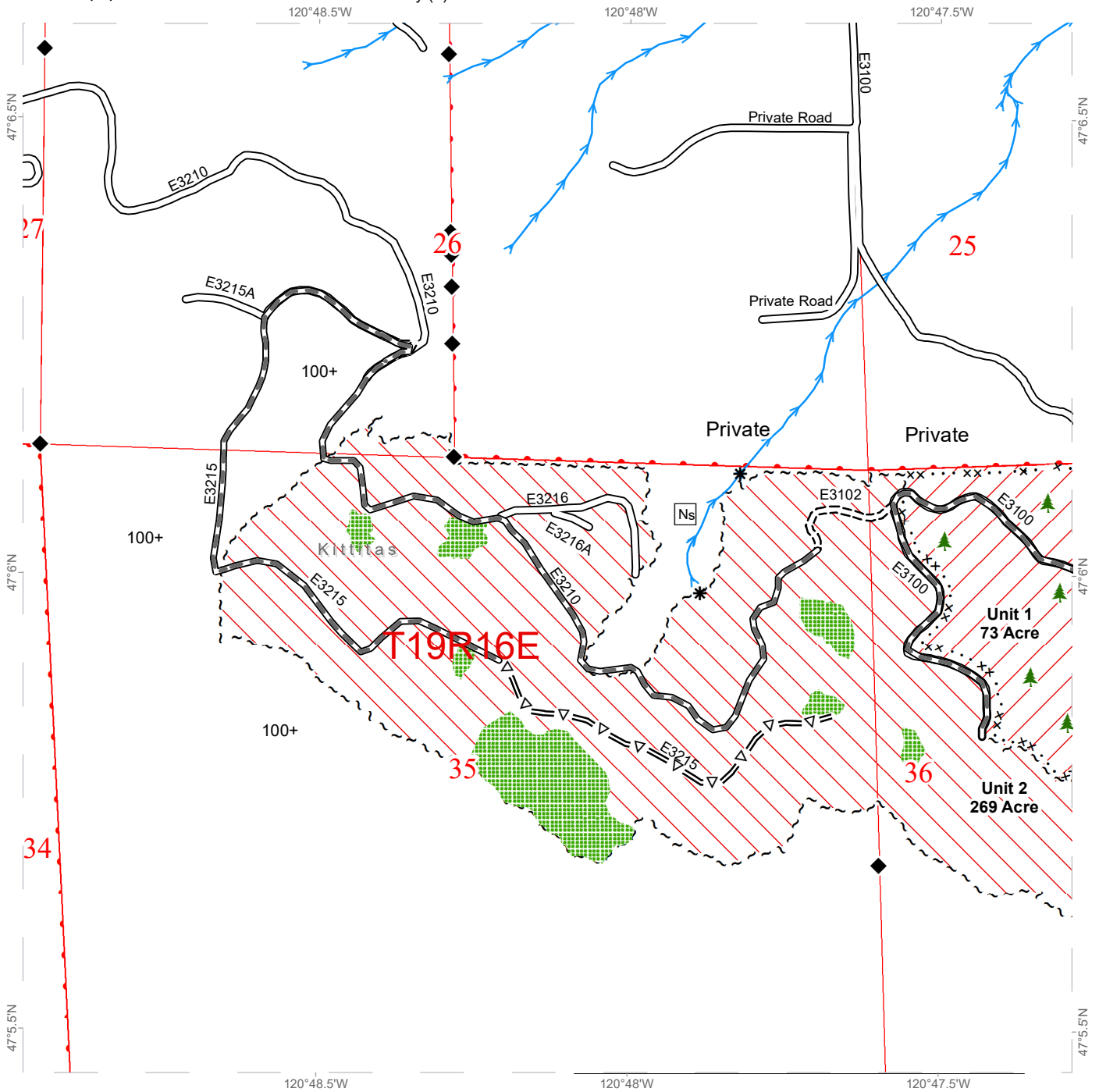


Legend					
~ ~ ~	Sale Boundary Tags	▬▬▬	Required Pre-Haul Maintenance	□	Stream Type
Green Grid	Leave Tree Area	=Δ=	Optional Pre-Haul Maintenance	*	Stream Type Break
Diagonal Red Lines	Variable Retention Harvest	▬▬▬▬▬	Required Construction	Blue Arrow	Streams
Diagonal Red Lines	Thinning	▬▬▬▬▬	Existing Roads	... x x	Special Mgmt Area Tags
Red Outline	Public Land Survey Sections	Green Tree	Leave Tree Area Symbol	Red Dotted Line	Property Line
Red Outline	Public Land Survey Townships	Black Diamond	Survey Monument		

TIMBER SALE MAP

SALE NAME: Q JUSTIFY SORTS
AGREEMENT #: 30-098347
TOWNSHIP(S): T19R16E
TRUST(S): Common School and Indemnity (3)

REGION: Southeast Region
COUNTY(S): Kittitas
ELEVATION RGE: 2400-3160



Legend

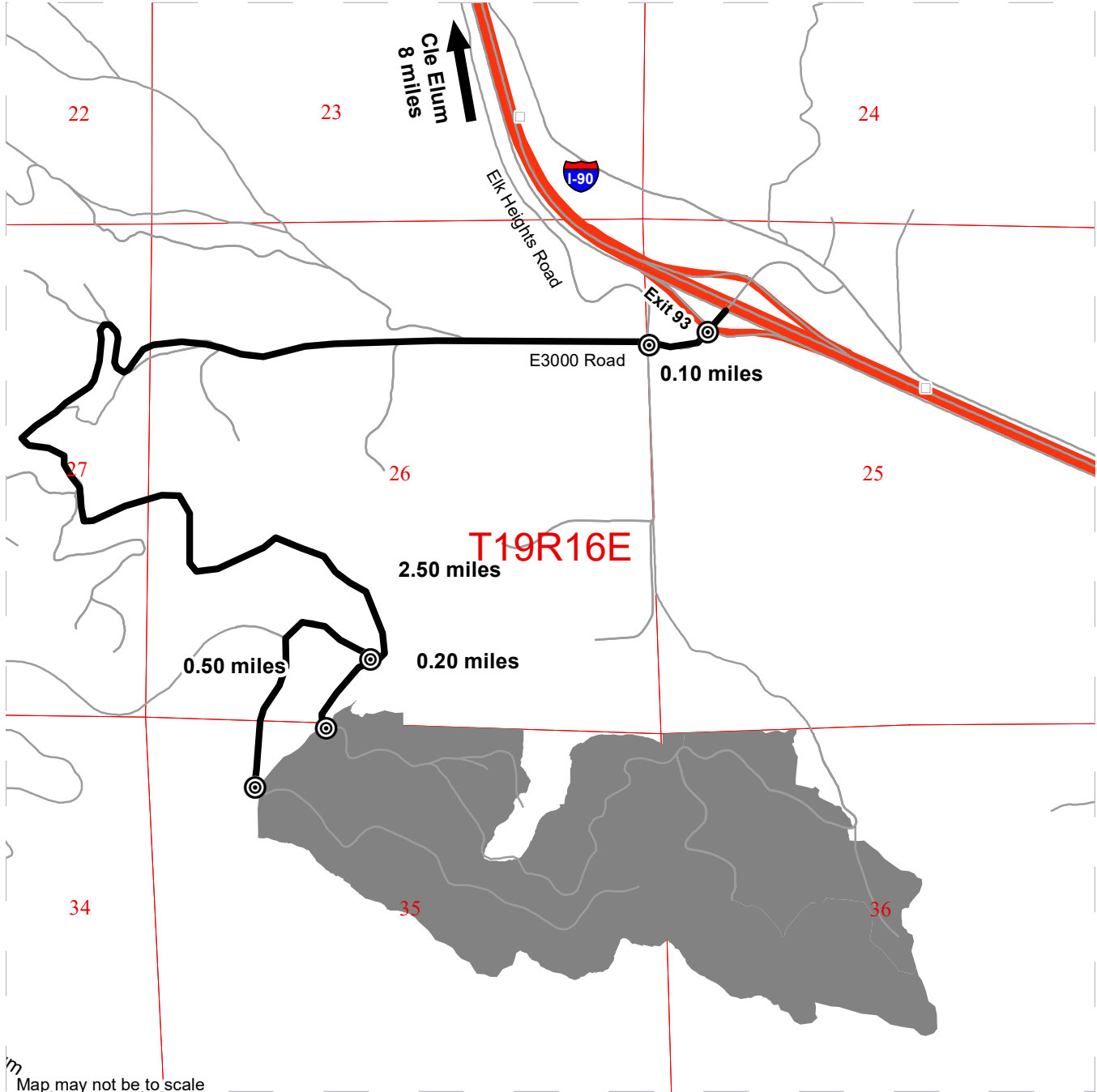
- | | | |
|------------------------------|-----------------------------------|------------------------------|
| --- Sale Boundary Tags | — Required Pre-Haul Maintenance | □ Stream Type |
| Leave Tree Area | =Δ= Optional Pre-Haul Maintenance | * Stream Type Break |
| Variable Retention Harvest | ==== Required Construction | → Streams |
| Thinning | — Existing Roads | ...xx Special Mgmt Area Tags |
| Public Land Survey Sections | ▲ Leave Tree Area Symbol | — Property Line |
| Public Land Survey Townships | ◆ Survey Monument | |



DRIVING MAP

SALE NAME: Q JUSTIFY SORTS
AGREEMENT#: 30-098347
TOWNSHIP(S): T19R16E
TRUST(S): Common School and Indemnity (3)

REGION: Southeast Region
COUNTY(S): Kittitas
ELEVATION RGE: 2400-3160



Map may not be to scale

<p>Legend</p> <ul style="list-style-type: none"> ⊙ - Distance Indicator Highway Public Land Survey Townships Public Land Survey Sections Timber Sale Unit Haul Route Other Roads □ Milepost Markers 	<p><u>DRIVING DIRECTIONS:</u></p> <p>From Cle Elum, drive east on Hwy I-90 for 8 miles to Exit 93 (Elk Heights). Take the exit and turn right onto Elk Heights County Road. At the junction of Elk Heights Road and E3000 Road (about 0.10 miles) turn left. Drive south for about 1 mile to sale boundary.</p> <p style="text-align: center;"> 0 0.15 0.3 0.6 Miles </p>
--	--





TIMBER NOTICE OF SALE

SALE NAME: Q KINGS

AGREEMENT NO: 30-98253

AUCTION: July 23, 2019 starting at 10:00 a.m., Northeast Region Office, Colville, WA

COUNTY: Stevens

SALE LOCATION: Sale located approximately 15 miles north of Deer Park, WA.

PRODUCTS SOLD AND SALE AREA:

All green conifer species (excluding ponderosa pine and western red cedar) 7 inches and greater in diameter at breast height and all green ponderosa pine and western red cedar 8 inches and greater in diameter at breast height not banded with purple paint, except for leave trees bounded by yellow leave tree area tags in Units 1, 3, 4, 5, 6 and 7 bounded by white timber sale boundary tags on part(s) of Sections 16 all in Township 30 North, Range 42 East, Sections 30 all in Township 30 North, Range 40 East, Sections 26 and 36 all in Township 30 North, Range 39 East, W.M., containing 695 acres, more or less.

CERTIFICATION: This sale is certified under the Sustainable Forestry Initiative® program Standard (cert no: PwC-SFIFM-513)

ESTIMATED SALE VOLUMES AND QUALITY:

Table with columns: Species, Avg DBH, Ring Count, Total MBF, and MBF by Grade (P, SM, 1S, 2S, 3S, 4S, 5S, 6S, UT). Rows include Douglas fir, Ponderosa pine, Larch, Grand fir, Lodgepole, Red cedar, and Sale Total.

MINIMUM BID: \$637,000.00

BID METHOD: Sealed Bids

PERFORMANCE

SECURITY: \$100,000.00

SALE TYPE: Lump Sum

EXPIRATION DATE: October 31, 2021

ALLOCATION: Export Restricted

BID DEPOSIT: \$63,700.00 or Bid Bond. Said deposit shall constitute an opening bid at the appraised price.

HARVEST METHOD: Cable, Tethered Equipment, and Ground-based Equipment. Falling and Yarding will not be permitted from February 1 to July 1 unless authorized in writing by the Contract Administrator due to spring breakup and beetle timing restrictions.

ROADS: 21.68 stations of required construction. 796.14 stations of required prehaul maintenance. 21.87 stations of decommissioning. Road construction will not be permitted from November 15 to May 31 unless authorized in writing by the Contract Administrator due to frozen conditions and spring breakup. The hauling of forest products will not be permitted from February 1 to July 1 unless authorized in writing by the Contract Administrator due to spring breakup and beetle timing restrictions.



TIMBER NOTICE OF SALE

ACREAGE DETERMINATION

CRUISE METHOD: Acreage determined using GPS methods. Acreage shown above is net harvest acres in harvest units. Ponderosa pine and western red cedar: 8.0 - 17.5 inches dbh has a minimum top of 5.6 inch dib. All other species: 7.0 - 17.5 inches dbh has minimum top of 4.6 inch dib. All species 17.6 inches and greater dbh have a minimum top dib of 40% of dob at 16 feet or a 6 inch top whichever is greater. Utility wood: comprised of non-board foot volume and volume below the minimum top diameter of 5.0 inches or 40% of dob at 16 feet to a minimum of a 2.6 inch top.

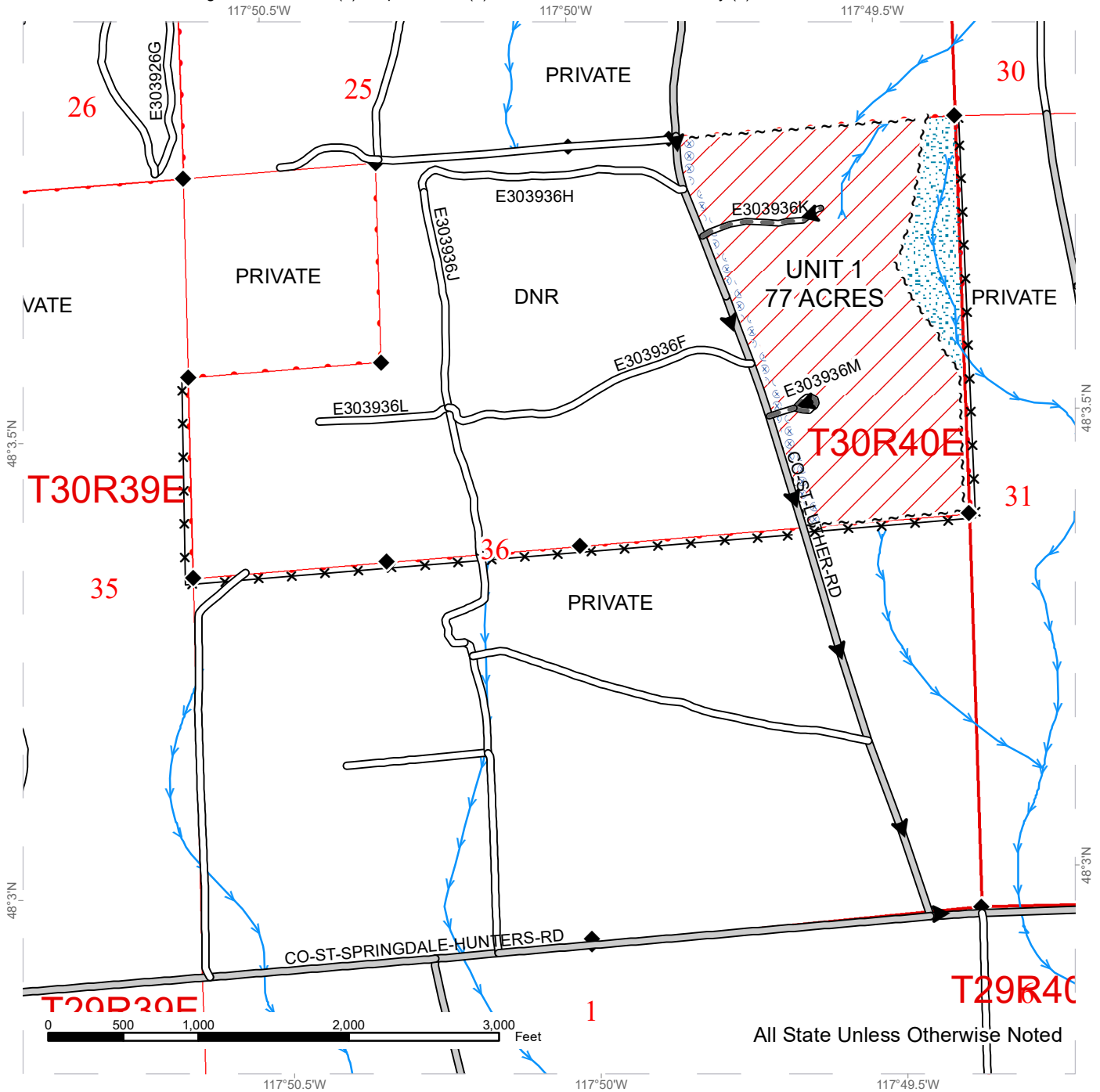
FEES: Within 10 days of day of sale, Purchaser shall provide a check payable to John Hancock Life Insurance Co. in the amount of \$500.00 for a road use permit. Purchaser will be required to obtain and pay for two Stevens County road approach permits, \$69,955.00 is due on day of sale. \$9.00 per MBF is due upon removal. These are in addition to the bid price.

SPECIAL REMARKS: Locked gates restricts access to Units 6 and 7. An electronic locked gate restricts access to Unit 4. Please contact the Northeast Region Office at (509) 684-7474 for access. There is approximately 95 acres of cable harvesting in Unit 7. Unit 2 has been removed from the timber sale.

TIMBER SALE MAP

SALE NAME: Q KINGS
AGREEMENT #: 30-098253
TOWNSHIP(S): T30R39E, T30R40E, T30R42E
TRUST(S): Agricultural School (4), Capitol Grant (7), Common School and Indemnity (3)

REGION: Northeast Region
COUNTY(S): Stevens
ELEVATION RGE: 2160-3920



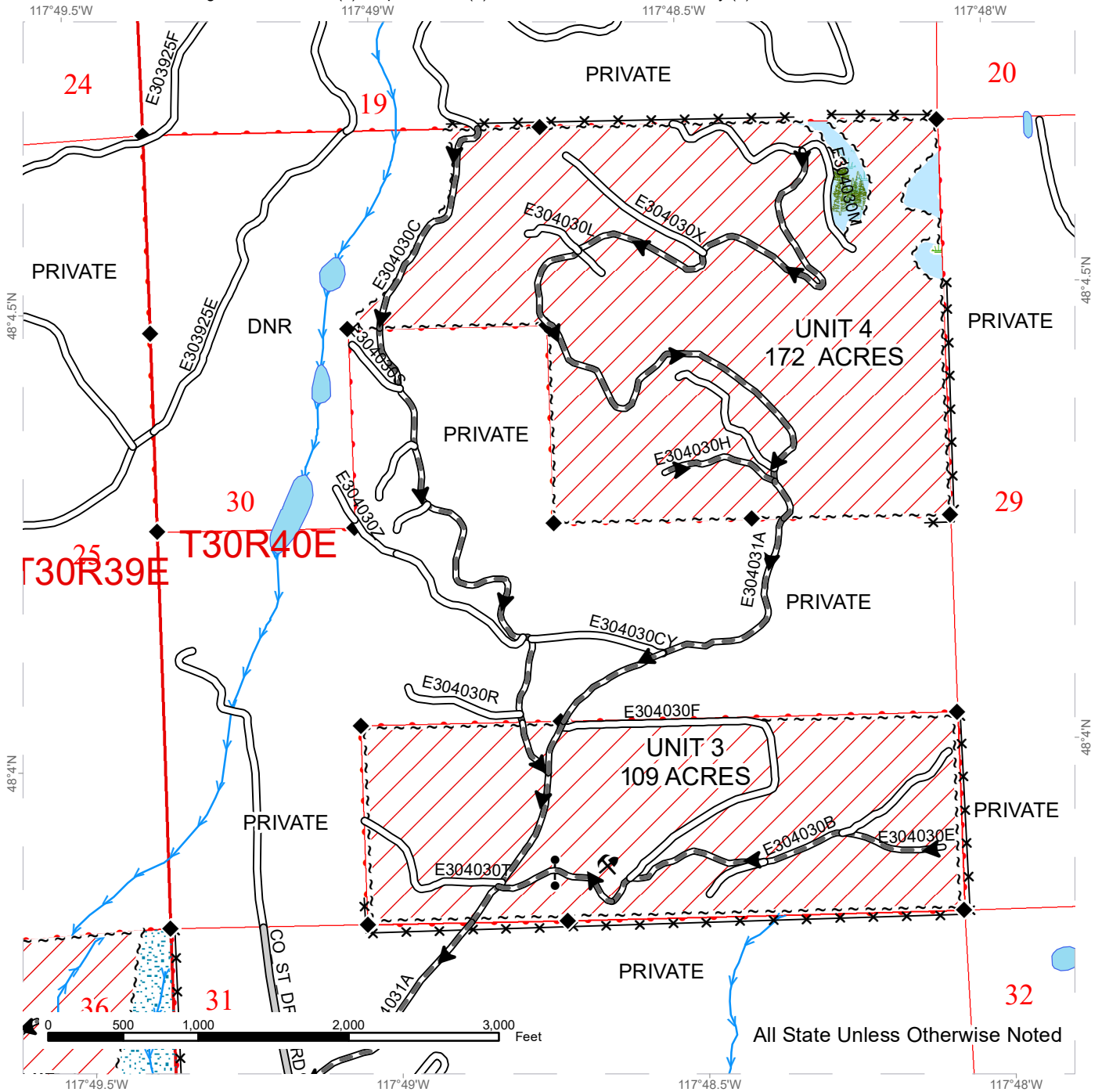
All State Unless Otherwise Noted

Public Land Survey Sections	County Road	Riparian Mgt Zone
Variable Retention Harvest	Existing Roads	Hazard Abatement Area
Sale Boundary Tags	Required Pre-Haul Maintenance	Streams
	Haul_Route	Survey Monument
		Fence

TIMBER SALE MAP

SALE NAME: Q KINGS
AGREEMENT #: 30-098253
TOWNSHIP(S): T30R39E, T30R40E, T30R42E
TRUST(S): Agricultural School (4), Capitol Grant (7), Common School and Indemnity (3)

REGION: Northeast Region
COUNTY(S): Stevens
ELEVATION RGE: 2160-3920



All State Unless Otherwise Noted

Public Land Survey Sections	County Road	Riparian Mgt Zone
Variable Retention Harvest	Existing Roads	Wetlands - Non-forested
Sale Boundary Tags	Required Pre-Haul Maintenance	Forested Wetland
	Haul_Route	Streams
		Survey Monument
		Gates
		Fence



**State of Washington
Department of Natural Resources**

SEALED BID FORM

Sale Name _____ Agreement Number _____

_____ hereby submits the following bid for timber.
(Print full, legal company name)

(Street address, City, State, Zip Code)

(Phone Number)

Lump Sum Bid (Not Including Fees) \$ _____ **For Total Sale**

Weight Scale Sale Bid (Not Including Fees) \$ _____ / **Ton**

Scribner Scale Sale Bid (Not Including Fees) \$ _____ / **MBF For Biddable Species**

BID DEPOSIT

Bid Deposit Amount: \$ _____

Bid Deposit Type:

- Cash, certified check, cashiers check, or money order
- Per Sale Bid Bond
- Statewide Bid Bond, Number _____

Within 30 days of confirmation date the successful bidder agrees to furnish Performance Security acceptable to the State in the amount specified on the Notice of Sale. Performance Security must guarantee performance of all provisions of the contract and payment of any damages caused by operations under the contract or resulting from the successful bidders noncompliance with any rule or law.

Bidder's Warranty and Bid Signature

By signing and submitting this bid as an offer to purchase forest products from the State, the Bidder hereby warrants to the State that they have had an opportunity to fully inspect the sale area and the forest products being sold. Bidder further warrants to the State that they enter this bid based upon their own judgments of the value of the forest products, formed after their own examination and inspection of both the timber sale area and the forest products being sold. Bidder also warrants to the State that they enter this bid without any reliance upon the volume estimates, acreage, appraisals, pre-bid documentation, or any other representation by the Washington State Department of Natural Resources.

_____ Date _____
(Signature of Authorized Representative submitting this bid)

(Print **name and title** of Authorized Representative submitting this bid)

Note: all sales are subject to confirmation by the Commissioner of Public Lands (Refer 79.15.120)

Instructions For Completing Sealed Bid Form

All bids submitted for the purchase of forest products being sold by the Washington State Department of Natural Resources must have an original signature on behalf of the person or entity submitting the bid, and must be on the form provided in this booklet or a photocopy thereof. The DNR will not accept bids that are not signed, and will not accept bids that are not on the current, approved bid form. All appropriate blanks on bid form must be completed including the bid bond number if the bidder is relying upon a bid bond for bid deposit.

For more specific information, contact the appropriate region office.

In-Person Bids

- A. Sealed bids must be in auction box before 10:00 a.m. on the day of auction at the location specified in the Timber Notice of Sale.
 - B. Sealed bids must be submitted in an envelope with the name of the sale, the bidder's name and the contract number clearly written on the outside of the envelope. The full legal name and business address of the bidder must be inserted where indicated on the form, and must be on the bid bond and timber sale contract. The bid form must be signed by an authorized representative. When a bidder has more than one person authorized to bid, documentation of those persons with signature authority for bidding must accompany the bid or be on file at the region office. Sealed bid envelopes are available at all region offices. One bid per envelope.
 - C. Sealed bid envelopes **must** contain a completed bid form and a bid deposit.
 - D. Sealed bid envelopes **may** contain a check for the Initial Deposit amount and a check for fees.
-

Mailed Bids

- A. Bids that are mailed are required to have printed on the outside: "DO NOT OPEN UNTIL SALE DATE. SEALED BID ENCLOSED". The sealed bid envelope(s) will be enclosed inside the mailed-in envelope. Mailed bids must be submitted in an envelope with the name of the sale, the bidder's name and the agreement number clearly written on the outside of the envelope. The full legal name and business address of the bidder must be inserted where indicated on the form, and must be the same on the bid bond and timber sale contract. The Sealed Bid Form must be signed by an authorized representative. When a bidder has more than one person authorized to bid, documentation of those persons with signature authority for bidding must accompany the bid or be on file at the region office. Mail-in envelopes are available at all region offices. One bid per mailed-in envelope.
 - B. Bids that are mailed will be accepted up to 4:30 p.m. the last business day before the auction by the region office in which the sale is located. Bidders assume the risk for the method of delivery. The DNR assumes no responsibility for any delays caused by any delivery service.
 - C. Sealed bid envelopes **must** contain a completed bid form and a bid deposit.
 - D. Sealed bid envelopes **may** contain a check for the Initial Deposit amount and a check for fees.
-

Initial Deposit:

Lump Sum Sales - Initial Deposit must equal 10% of the total bid submitted.
(25% if the bidder is a defaulter as defined under WAC 332-140-300)

Weight Scale Sales - Initial Deposit must equal 10% of the bid per ton multiplied by the total sale estimated tonnage. (25% if the bidder is a defaulter as defined under WAC 332-140-300)

Scribner MBF Scale Sales - Initial Deposit must equal 10% of the bid per MBF multiplied by the total sale MBF. (25% if the bidder is a defaulter as defined under WAC 332-140-300)

**State of Washington
Department of Natural resources**

STATEWIDE BID BOND

Bond Number _____

_____ of _____,
(Principal's Name) (City, State)

hereinafter called PRINCIPAL, and _____ hereinafter called
SURETY,

a corporation organized under the laws of the State of _____, and authorized to transact surety business in the State of Washington, as SURETY, are held and firmly bound jointly and severally to the State of Washington, Department of Natural Resources, hereinafter called the STATE, in the sum of \$150,000.00 Dollars, lawful money of the United States of America. The PRINCIPAL binds itself, its heirs, executors, administrators, successors, and assigns, and the SURETY binds itself, its successors, and assigns, all jointly and severally.

This bond shall be governed by the laws of the State of Washington. In the event of a lawsuit involving this bond, a venue shall be proper only in Thurston County Superior Court.

Signed, sealed and dated this _____ day of _____, _____ .
(month) (year)

This statewide bid bond may be used for bidding between the following dates:

Starting:

Ending:

It Is Hereby Understood and Agreed:

If PRINCIPAL is an apparent high bidder, PRINCIPAL shall before 4:30 p.m ., on day of sale, pay to the STATE the amount of the initial deposit in the form of a certified check, cashier's check, bank draft, cash or money order, then this agreement shall be void for the sale on which the payment is made; otherwise, it will remain in force.

SURETY will make payment to the STATE within ten days after demand by the STATE if the PRINCIPAL shall fail to make timely payment as described above.

The SURETY may cancel this bond by sending a written notice to the STATE, not less than forty-five days before a cancellation date; liability shall terminate as to acts or omissions of the PRINCIPAL that occur after the cancellation date.

The PRINCIPAL and the SURETY executed this bond on the date first mentioned.

Principal: (Above named)

Signature: _____

Name: _____

Title: _____

Address: _____

City: _____
State & Zip Code

Surety: (Above named)

Signature: _____

Name: _____

Title: _____

Address: _____

City: _____
State & Zip Code

Surety: (Local Office of Authorized agent)

Signature: _____

Name: _____

Title: _____

Address: _____

City: _____
State & Zip Code

Notary or Company Seal in Space Above

Instructions for Completing Timber Sale Statewide Bid Bond

- A. This form is authorized for use as bid guaranty to qualify for bidding on Washington State Department of Natural Resources timber sales.
- B. The Statewide Bid Bond may be used as bid guaranty on more than one timber sale.
- C. The full legal name and business address of the PRINCIPAL must be inserted where indicated and must be the same as will appear on the bidding record and timber sale contract. The bond must be signed by an authorized person. Additionally, the name must be typed or printed below the signature and title must be shown.
- D. The full legal name and business address of the SURETY must be inserted where indicated. The bond must be signed by an authorized person. Additionally, the name must be typed or printed below the signature and the title must be shown.
- E. If the SURETY does not have a Washington State office or resident agent, but is authorized to transact surety business in the State of Washington as SURETY, it may leave this signature block blank.
- F. This form must be received by the Department of Natural Resources, Product Sales & Leasing Division, PO BOX 47016, Olympia, Washington, 98504-7016, ten days in advance of the auction.
- G. **The State reserves the right to reject *incomplete or incorrect* bid bond forms, making such forms unacceptable as bid guaranty.**

**State of Washington
Department of Natural Resources**

Timber Sale Per Sale Bid Bond

Bond Number _____

_____ of _____, hereinafter called PRINCIPAL, and _____, hereinafter called SURETY, a corporation organized under the laws of the State of _____ and authorized to transact surety business in the State of Washington, as SURETY, are held and firmly bound jointly and severally to the State of Washington, Department of Natural Resources, hereinafter called the STATE, in the sum of \$ _____ Dollars, lawful money of the United States of America. The PRINCIPAL binds itself, its heirs, executors, administrators, successors, and assigns, and the SURETY binds itself, its successors, and assigns, all jointly and severally.

This bond shall be governed by the laws of the State of Washington. In the event of a lawsuit involving this bond, venue shall be proper only in Thurston County Superior Court.

Signed, sealed, and dated this _____ day of _____, 20 _____.

BID IDENTIFICATION:

SALES NAME(S)	REQUIRED DEPOSIT	AGREEMENT NUMBER(S)

DATE OF BID: _____

It Is Hereby Understood and Agreed:

If PRINCIPAL is the high bidder on the sale(s) identified above and, within ten (10) days of the day of sale, transmits cash, certified check, cashier's check, bank draft or money order, payable to the STATE, in the amount of the bid guaranty required by the terms of the Notice of Sale, *then* this obligation shall be void; *otherwise*, it shall remain in force.

SURETY will make payment to the STATE within ten (10) days after demand by the STATE whenever the PRINCIPAL shall fail to make timely payment as described above.

IN WITNESS WHEREOF: the PRINCIPAL and the SURETY have caused this bond to be executed on the date first mentioned.

SECOND OFFICER:

Signature: _____

Name: _____

Title: _____

PRINCIPAL: (Above Named)

Signature: _____

Name: _____

Title: _____

SURETY: (Local Office of Authorized Agent)

Signature: _____

Name: _____

Title: _____

Address: _____

City: _____

State & Zip: _____

SURETY: (Above Named)

Signature: _____

Name: _____

Title: _____

Address: _____

City: _____

State & Zip _____

NOTARY OR COMPANY SEAL IN THE SPACE ABOVE

Instructions for Completing Timber Sale Per Sale(s) Bid Bond

- A. This form is authorized for use as bid guaranty to qualify for bidding on Washington State Department of Natural Resources timber sales.
- B. The Timber Sale Per Sale Bid Bond may be used as bid guaranty on more than one timber sale auction held the same date at the same location.
- C. The full legal name and business address of the PRINCIPAL must be the same as will appear on the bidding record and timber sale contract. The bond must be signed by an authorized person, the name typed or printed, and title shown. If PRINCIPAL is a corporation, a second officer must sign in the space to the left of the signature of the officer executing for the PRINCIPAL.
- D. The full legal name and business address of the SURETY must be inserted where indicated. The bond must be signed by an authorized person. Additionally, the name must be typed or printed below the signature and the title must be shown. If this person is not an officer of the corporation, evidence of authority must be submitted.
- E. If the SURETY does not have a Washington State office or resident agent, but is authorized to transact surety business in the State of Washington as Surety, it may leave the local office signature block blank.
- F. The date of the bid bond must not be later than the auction date.
- G. **The State reserves the right to reject incomplete or *incorrect* bid bond forms, making such forms unacceptable as guaranty.**

STATE OF WASHINGTON
DEPARTMENT OF NATURAL RESOURCES

LOG SORT SEALED BID FORM

Sale Name _____ Agreement Number _____ Date _____

_____ hereby submits the following bid for delivered logs.
(Print Company Name)

_____ Telephone Number _____
(Print Name Authorized Company Representative) (Contact for bid result notification)

(Street Address)

(City, State and Zip)

Agreement Number	Sort Number	<u>Delivered Logs Bid Amount</u> (fill in one only)	
		\$ /MBF	\$ /TON

Bid Deposit Amount \$ _____

- Bid Deposit Type:**
- Cash, Certified Check, Cashiers Check, or Money Order
 - Per Sale Bid Bond
 - Statewide Bid Bond, Number _____

The successful bidder agrees to furnish payment security acceptable to the State in the amount as described in clause P-041 of the Purchaser’s contract prior to log delivery and at a date to be determined by the State.

Bidder’s Warranty and Bid Signature

By signing and submitting this bid as offer to purchase forest products from the State, the Bidder hereby warrants to the State that they have had an opportunity to fully inspect the sale area and the forest products being sold. Bidder further warrants to the State that they enter this bid based solely upon their own judgment of the value of the forest products, formed after their own examination and inspection of both the timber sale area and the forest products being sold. Bidder also warrants to the State that they enter this bid without any reliance upon the volume estimates, acreage estimates, appraisals, pre-bid documentation, or any other representation by the State Department of Natural Resources.

(Signature of Authorized Representative submitting this bid)

(Date of Signature)

(Print name and title of Authorized Representative submitting this bid)

NOTES: A separate bid form is required for each log sort bid and must be delivered in a separate envelope. Photocopies of this bid form may be used. Each photocopy must have original signatures. Final contract award is contingent upon the State’s haul cost analysis. Actual haul route may vary and is subject to change at the State’s discretion. All sales are subject to confirmation by the Commissioner of Public Lands as per RCW 79.15.100.

LOG SORT SEALED BID SUPPLEMENTAL INFORMATION FORM_____
(Print Company Name)_____
(Sale Name)_____
(Agreement Number)_____
(Sort Number)_____
(email: optional for DNR production report distribution)**Log Manufacturing Specifications:****Sawlog and Peeler sorts:** Enter at least one preferred log length including trim for each log length range below.**Pole sorts (Distribution):** Enter three or more lengths. Attach preferred manufacturing information.**Pole sorts (Transmission):** Enter six or more lengths. Attach preferred manufacturing information.**Tonnage sorts:** See bid form instructions for required log lengths. Enter additional custom lengths as desired.

Log Length Ranges	Bidder's Preferred Log Lengths
16 ft. through 20 ft.	
22 ft. through 30 ft.	
32 ft. through 40 ft.	
Distribution Poles – 35 ft. through 55 ft.	
Transmission Poles – 60 ft.+	

Log Delivery Information:**1) Designate the point of delivery and address (must be a street address)**_____
(Location Name)_____
(Street Address)_____
(City, State and Zip)**2) Designate the state approved Scaling and Weighing facilities closest to the point of delivery as needed.****Scaling Location Information****Weighing Location Information**_____
(Scaling Location Name)_____
(Weighing Location Name)_____
(Third Party Scaling Organization)_____
(Weighing Location Owner)_____
(Scaling Location Street Address)_____
(Weighing Location Street Address)_____
(Scaling Location City, State and Zip)_____
(Weighing Location City, State and Zip)

Final contract award is contingent upon the State's haul cost analysis. Actual haul route may vary and is subject to change at the State's discretion. Additional terms or conditions requested by the bidder on or attached to the Log Sort Sealed Bid or Supplemental Information Forms are informational only and non-binding.

Instructions for Completing the Log Sort Sealed Bid and Supplemental Information Forms.

All bids submitted for the purchase of forest products being sold by the Washington State Department of Natural Resources must have an original signature on behalf of the person or entity submitting the bid, and must be on the form(s) provided in this booklet or a photocopy thereof. The DNR will not accept bids that are not signed, and will not accept bids that are not on the current, approved bid form. All appropriate blanks including Agreement Number, Sort Number, Bid amount (per mbf or ton as appropriate for the sort), Bid deposit amount and type. Signatures and date on bid form must be completed including the bid bond number if bidder is relying upon a bid bond for bid deposit.

Bids shall not be accepted if a completed '**Log Sort Sealed Bid Supplemental Information Form**' is not included with the approved '**Log Sort Sealed Bid Form**'.

Required log lengths for tonnage sorts: Preferred log lengths for tonnage sawlog sorts shall include the following plus any additional lengths identified on the Bid Supplemental Information form:

Species Type	Preferred Lengths
Conifer Sorts	16', 20', 24', 26', 32', 40'
Hardwood Sorts	18', 20', 26', 28', 30', 36', 38', 40'

For more specific information, contact the appropriate region office.

In-Person Bids

- A. Sealed bids must be in auction box or auction envelope before 10:00 a.m. on the day of sale at the location specified in the notice of sale.
- B. Sealed bids must be submitted in an envelope with the name of the sale, the bidder's name and the contract agreement number clearly written on the outside of the envelope. The full legal name and business address of the bidder must be inserted where indicated on the form, and must be the same as the name on the bid bond and timber sale contract. The bid form must be signed by an authorized person. When a bidder has more than one person authorized to bid, then documentation of those persons with signature authority for bidding must accompany the bid or be on file at the region office. Sealed bid envelopes are available at all region offices. One bid per envelope.
- C. Sealed bid envelopes must contain the following:
 1. A completed '**Log Sort Sealed Bid Form**';
 2. A completed '**Supplemental Information Form**' and;
 3. A bid deposit

Mailed Bids

- A. Mail-in bid envelopes are required to have printed on the outside: "DO NOT OPEN UNTIL SALE DATE. SEALED BID ENCLOSED." The sealed bid envelope(s) will be enclosed inside the mailed-in envelope. Mailed bids must be submitted in an envelope with the name of the sale, the bidder's name and the agreement number clearly written on the outside of the envelope. The full legal name and business address of the bidder must be inserted where indicated on the form, and must be the same on the bid bond and timber sale contract. The bid form must be signed by an authorized person. When a bidder has more than one person authorized to bid, then documentation of those persons with signature authority for bidding must accompany the bid or be on file at the region office. Mail-in envelopes are available at all region offices. One bid per mailed-in envelope.
- B. Mail-in or otherwise delivered bids will be accepted up to 4:30 p.m. the last business day before the auction by the region office in which the sale is located. Bidders assume the risk for the method of delivery they chose. The DNR assumes no responsibility for any delays caused by any delivery service.
- C. Sealed bid envelopes must contain the following:
 1. A completed '**Log Sort Sealed Bid Form**';
 2. A completed '**Log Sort Sealed Bid Supplemental Information Form**' and;
 3. A bid deposit

Department of Natural Resources Region Offices

Olympia Headquarters
 1111 Washington St SE
 MS 47000
 Olympia, WA 98504-7000
 (360) 902-1000
www.dnr.wa.gov

Product Sales & Leasing Division

1111 Washington St SE
 MS 47014
 Olympia, WA 98504-7014
 (360) 902-1600

South Puget Sound Region
 950 Fairman Ave N
 Enumclaw, WA 98022-9282
 (360) 825-1631

Pacific Cascade Region

601 Bond Road
 PO Box 280
 Castle Rock, WA 98611-0280
 (360) 577-2025

Southeast Region

713 Bowers Road
 Ellensburg, WA 98926-9301
 (509) 925-8510

Northwest Region

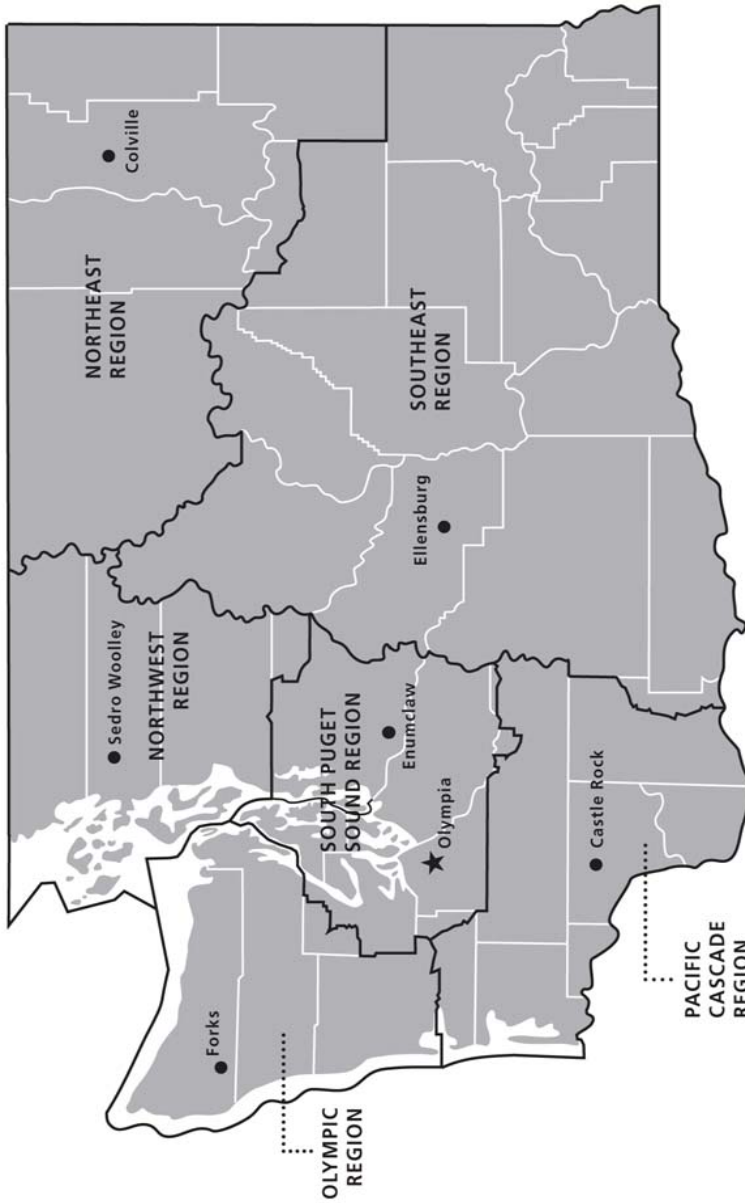
919 N Township St
 Sedro Woolley,
 WA 98284-9384
 (360) 856-3500

Olympic Region





411 Tillicum Lane
 Forks, WA 98331-9271
 (360) 374-2800

Northeast Region

225 S Silke Road
 PO Box 190
 Colville, WA 99114-0190
 (509) 684-7474



DNR REGIONS

-  DNR Region Boundaries
-  County Boundaries
-  DNR Region Office
-  Olympia Headquarters



WASHINGTON STATE DEPT OF
NATURAL RESOURCES



For more information about how public lands are managed visit DNR's web page at www.dnr.wa.gov

Fire, Burn Ban Information and Region Offices
 Toll Free: 1-800-527-3305 General TTY: 7-1-1





WASHINGTON STATE DEPT OF
**NATURAL
RESOURCES**

1111 WASHINGTON ST SE
MS 47014
OLYMPIA WA 98504-7014

www.dnr.wa.gov

For alternate formats
of this document,
Call (360) 902-1000
TRS: 7-1-1

PRINTED IN THE USA ON RECYCLED PAPER

