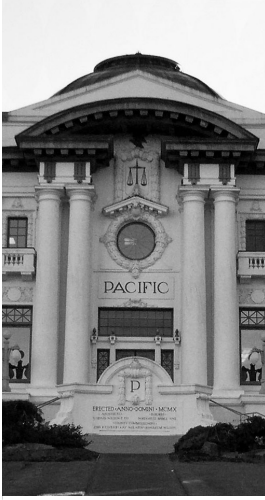


R
E
S
O
U
R
C
E
S

N
A
T
U
R
A
L



Public Auction Sale of Timber

Book 990

.....

August 2018



WASHINGTON STATE DEPT OF
**NATURAL
RESOURCES**

IMPORTANT NOTICES

Natural Resources (DNR)

Governmental Regulatory Actions or Orders

The purchaser assumes the risk of liabilities related to regulatory actions or orders by any government agency that may affect the operability of these timber sales. Such regulatory actions or orders include, but are not limited to, actions taken pursuant to the State Forest Practices Act, Chapter 76.09 RCW, and the Federal Endangered Species Act, 16 U.S.C. §§ 1531-1544. Please see timber sale contract clauses G-066 and G-220 for further information.

Threatened and Endangered Species

DNR cannot verify the presence or absence of **any** threatened or endangered species that may affect the operability of the timber sale. Purchasers must rely on their own assessments.

Export Restricted

All timber purchased under these state DNR contracts shall not be exported outside of the United States until the timber has been processed. Purchasers shall not violate any of the prohibitions in WAC 240-15-015 (relating to the prohibitions on export and substitution), WAC 240-15-025 (relating to reporting requirements), and WAC 240-15-030 (relating to enforcement). If purchasers knowingly violate WAC 240-15-015, purchasers shall be barred from bidding on or purchasing export restricted timber as provided.

Cover photos

Timber Sales in this book are from state trust lands, managed to help build K-12 public schools, state universities, colleges, prisons, mental hospitals, the state Capitol; and to support local services in many counties.

Top left: State Forest Lands are managed to provide revenue to the counties in which they are located such as the Pacific County Courthouse in South Bend, Washington. Northwest Bridge Company of Portland, Oregon completed construction of the courthouse building in June of 1911. One unusual feature of the historic building is an "art glass dome" that crowns the structure. The courthouse is listed on the National Register of Historic Places.
Photo: DNR/Tom Heller

Bottom left: Grade school students learn from high school students in the North Mason School District during Students in the Watershed day in the Tahuya State Forest trust lands. **Photo:** DNR/Staff

Right: Landscape view of DNR managed trust lands in western Washington. **Photo:** DNR/Staff

Table of Contents

Certification Opportunities for DNR Timber Purchasers	Page 3
Bidder/Purchaser Auction and Bidding Information	Page 5
Summary of All Sales Being Offered in August	Page 11
Roller Sorts	Page 13
Lofty	Page 19
Blockbuster Sorts	Page 25
The Village	Page 31
Crane Key VRH RMZ	Page 35
Hidden Gems	Page 39
The Village	Page 45
The Village	Page 49
Sealed Bid Form and Instructions	Page 55
Statewide Bid Bond and Instructions	Page 57
Timber Sale per Sale Bid Bond and Instructions	Page 61
Log Sort Sealed Bid Form and Instructions	Page 65



Certification Opportunities for DNR Timber Purchasers

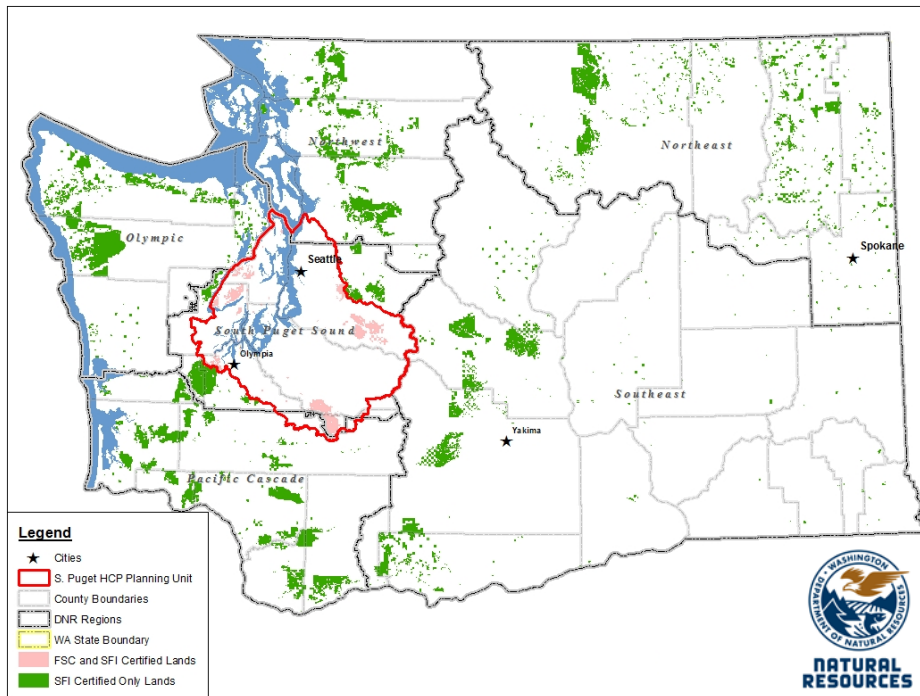
Certified forests are grown to an approved set of standards which demonstrate environmentally responsible, socially beneficial, and economically viable management practices that promote responsible forestry. This unique commitment to responsible forestry recognizes that forest landowners play a critical role in ensuring the long-term health and sustainability of our forests.

Forest Stewardship Council® (FSC®) is an independent, non-profit organization that promotes responsible management of the world's working forests through the development of forest management standards, a voluntary certification system, and trademarks that provide recognition and value to products bearing the FSC label in the marketplace. FSC standards ensure forestry is practiced in an environmentally responsible, socially beneficial, and economically viable way.

Sustainable Forestry Initiative Inc. is an independent, non-profit organization internationally endorsed and accepted around the world. The Sustainable Forestry Initiative® (SFI) program is based on the premise that responsible environmental behavior and sound business decisions can coexist. Its three-chamber Board of Directors governs all aspects of the SFI® program, with equal representation from the environmental, economic, and social sectors.

Currently, all Department of Natural Resources (DNR)-managed forested state trust lands in Washington State are certified under the SFI program Standard. Lands within DNR's South Puget Habitat Conservation Plan Planning Unit, located within parts of King, Pierce, Thurston, Lewis, Kitsap, and Mason counties, are dually certified under both the FSC-US Forest Management Standard and the SFI program Standard.

Certification under each standard involves an inspection audit of the landowner's forest management activities by an independent, accredited third-party to verify that it meets specified forest management principles. If the forest unit complies with the specific standard, the landowner receives a certificate of conformance ensuring that responsible forestry is being practiced. Both standards encourage integration of perpetual growing and harvesting of trees with strong measures to protect wildlife, plants, soil, water, and air quality. Both standards provide a seal of approval that forests certified under these principles are well-managed. The global marketplace recognizes and endorses multiple forest certification standards. Each standard has individual market niches. By being dually certified, DNR can maximize its customer base and provide choices to the consumer.



DNR's FSC certificate number is: BV-FM/COC-080501

DNR's SFI certificate number is: BV-SFIS-US09000572

DNR-managed forested state trust lands within the South Puget Habitat Conservation Plan Planning Unit (located within parts of King, Pierce, Thurston, Lewis, Kitsap, and Mason counties) are certified as being in compliance with the Forest Stewardship Council Pacific Coast Regional Standard.

To learn more about chain of custody and demonstrating that your timber is derived from a responsibly managed forest and/or to learn more about becoming a participant in the FSC Program, visit <https://us.fsc.org/>.

To learn more about DNR timber sales certified under the FSC Standard, visit www.dnr.wa.gov.

FSC A.C. owns all right, title, and interest in and to the Forest Stewardship Council trademarks.

All DNR-managed forested state trust lands across the state have been certified as being in compliance with the Sustainable Forestry Initiative program Standard.

To learn more about chain of custody and demonstrating that your timber is derived from a responsibly managed forest and/or to learn more about becoming a participant in the SFI program, visit www.sfiprogram.org.

To learn more about DNR timber sales certified under the SFI program Standard, visit www.dnr.wa.gov.

SFI Marks are registered marks owned by Sustainable Forestry Initiative Inc.

To learn more about certification on DNR-managed forested state trust lands, visit

http://www.dnr.wa.gov/BusinessPermits/Topics/TimberSaleAuction/Pages/lm_forest_certification.aspx or contact:

Product Sales & Leasing Division, Product Sales Section:

Tom Shay, Assistant Division Manager, 360-902-1561, thomas.shay@dnr.wa.gov
 Steve Teitzel, Operations, 360-902-1741, steve.teitzel@dnr.wa.gov

Forest Resources Division, HCP and Scientific Consultation Section:

Allen Estep, Assistant Division Manager, 360-902-2898, allen.estep@dnr.wa.gov
 Douglas Kennedy, Forest Certification Program Lead, 360-902-1283, douglas.kennedy@dnr.wa.gov

Washington State Department of Natural Resources (DNR)

Bidder's/Purchaser's Inspection of Sale Area and Forest Products

Acreage estimates and volume estimates contained within each timber notice of sale and each timber sale contract are made only for administrative and identification purposes. Except as expressly provided by the timber sale contract, the purchaser shall be responsible for paying the entire purchase price, even if the actual acreage or timber volume varies from the estimated quantity or volume shown.

All prospective bidders have the opportunity and are expected to inspect the sale area and the forest products located thereon. Bidders shall not rely on any representations by the State including, but not limited to, acreage estimates, volume estimates, appraisal or pre-bid documentation. The successful bidder/purchaser will further warrant that they have entered the timber sale contract without any reliance upon the DNR's volume estimates, acreage estimates, appraisals, pre-bid documentation, or any other representation by the DNR.

Any timber sale contract arising out of these public auctions will require the successful purchaser to warrant that they are entering the timber sale contract based solely upon their own judgment of the value of the forest products, formed after their own examination and inspection of both the timber sale area and the forest products being sold.

Exclusion and Disclaimer of Warranties

The PARTIES AGREE that the IMPLIED WARRANTIES OF MERCHANTABILITY AND FITNESS FOR A PARTICULAR PURPOSE, and ALL OTHER WARRANTIES EXPRESS OR IMPLIED, ARE EXCLUDED from this transaction, and shall not apply to the goods sold. For example, THE FOLLOWING SPECIFIC MATTERS ARE NOT WARRANTED, and are EXCLUDED from this transaction:

- a. ***The merchantability of the forest products.*** The use of the term "merchantable" in any document is not intended to vary the foregoing.
- b. ***The condition of the forest products.*** All forest products will be conveyed "AS IS."
- c. ***The acreage contained within any sale area.*** Any acreage descriptions appearing in the timber notices of sale, timber sale contract, timber sale map or other documents are estimates only, provided solely for administrative and identification purposes.
- d. ***The volume, quality, or grade of the forest products.*** The descriptions of the forest products to be conveyed are estimates only, made solely for administrative and identification purposes.
- e. ***The correctness of any soil or surface conditions, presale construction appraisals, investigations, and all other pre-bid documents prepared by or for the State.*** These documents have been prepared for the State's appraisal purposes only.
- f. ***That the sale area is free from threatened or endangered species, or their habitat.*** The State is not responsible for any interferences with forestry operations that result from the presence of any

threatened or endangered species, or the presence of their habitat, within the sale area.

g. *That the forestry operations to be performed under this contract will be free from regulatory actions by governmental agencies.* The State is not responsible for actions to enforce regulatory laws, such as the Washington Forest Practices Act (Chapter 76.09 RCW), taken by the Department of Natural Resources or any other agency that may affect the operability of these timber sales.

h. Items contained in any other documents prepared for or by the State.

Please also see timber sale contract clause G-060 for further information.

BIDDING PROCEDURES FOR TIMBER AUCTIONS

The general requirements that follow are a part of all Timber Notices of Sale to be auctioned by the Department of Natural Resources (DNR).

General Information

The State reserves the right to waive minor irregularities and the right to reject any or all bids.

A. This book contains the timber notices of sale and maps for each timber sale scheduled to be auctioned. More specific information can be obtained by contacting the appropriate region office at the number listed on the back cover of this book.

B. The timber notice of sale is a summary of sale information. For more specific information, interested parties are encouraged to view the Appraisal Packets on the DNR Internet Site @ www.dnr.wa.gov, this will take you directly to the Product Sales Section. The Appraisal Packets contain **DRAFT** copies of the timber notice of sale, map, contract, road plan, cruise data, precruise and cruise narrative, Forest Practices Application (FPA).

C. The sale preview packets may be obtained at no charge for individual sales by visiting the appropriate region office.

D. Timber sale contracts contain extensive terms and conditions that will be binding upon successful high bidders. Each bidder should carefully review all terms contained in the appropriate **DRAFT** timber sale contract prior to bidding on a sale, and should review the final contract prior to signing. **DRAFT** timber sale contracts are contained in the preview and presales packets and are available upon request at the respective region office.

E. Sales advertised in this book have not been approved by the Board of Natural Resources and are subject to the Board's approval before they will be sold. The Board meets and approves sales approximately six weeks prior to auction. All sales are subject to confirmation by the DNR under RCW 79.15.120.

F. The State does not guarantee the accuracy of any information contained herein pertaining to particular sales. Therefore, all prospective purchasers are expected to make their own independent inspections and appraisals prior to bidding.

G. If any conflict exists between the information in the Timber Notice of Sale, timber sale map,

sale preview packets and that in the timber sale contract, the **signed contract will prevail**.

H. Purchasers must pay the Forest Excise Tax on the bid price, permanent road construction costs, and other considerations. The tax rate is 5% without the EARR credit and 4.2% with the credit. For more information contact the Department of Revenue, Forest Tax Section at 1-800-548-8829.

I. **Within 30 days of sale confirmation, the apparent high bidder will provide to the State the Performance Security** specified on each Notice of Sale. **The successful bidder also agrees to return a signed contract to the State within 30 days of confirmation.** Failure to provide a signed contract to the state within 30 days of confirmation may result in a loss of bidder's rights to the products sold and forfeiture of initial deposit moneys.

J. Each DNR region office has information about sales offered in that region. For further information, contact the respective DNR region office. Region office addresses and telephone numbers appear on the back cover of this booklet.

K. The purchaser assumes the responsibility for any costs associated with extra maintenance or repair levied by a county for any county road used by the purchaser.

Bidding Process

A. All timber will be auctioned using the sealed bid method.

B. Bids submitted on day of auction must be in the bid box at the specified auction location before 10:00 a.m. The respective DNR region office must receive mailed bids by 4:30 p.m., on the last business day before the auction. Bidders assume all risk for the method of delivery.

C. The DNR has the right to reject bid forms that are completed incorrectly. *All bid forms must have an original signature on behalf of the person or entity submitting the bid, and must be on the form provided in this booklet or a photocopy thereof. Revised documents are not permissible.* Bidding instructions are on the back of the Sealed Bid Form. A bid deposit must be included in the sealed bid envelope unless using a Timber Sale Statewide Bid Bond.

D. All bids must include the completed Sealed Bid Form and bid deposit.

E. Bids will be opened in each respective region in the order in which sales appear in the Public Auction Sale of Timber book (alphabetically by county and by agreement number). Sales added after the book is printed will be inserted to retain this order. Sort sales may be auctioned out of this sequence at the State's convpignce.

F. If a tie bid occurs, the names of the tie bidders will be placed in a hat and the successful bidder will be determined by a drawing.

G. For sales offered on a stumpage basis, the apparent high bidder on a particular sale will have the option of withdrawing additional sealed bids submitted for any remaining stumpage sales to be auctioned. The apparent high bidder must exercise this option within two minutes after the apparent high bidder is announced. **This option is not available for sales offered on a delivered basis.**

Auction Time and Location

Auctions will start at 10:00 a.m. and close at 4:00 p.m. on the date and at the location specified in each Timber Notice of Sale.

Bid Deposits

- A. Required bid deposits are listed on each Timber Notice of Sale.
- B. Bid deposits must be in the form of cash, certified check, cashiers' check, money order or bid bond.
- C. Bid bonds may be either a Timber Sale Statewide Bid Bond or a Timber Sale Per Sale Bid Bond.
- D. All bid deposits shall be submitted by the person or entity submitting the bid and made payable to the Department of Natural Resources. **Third party deposits will not be accepted.**

Timber Sale Per Sale Bid Bonds

- A. The Per Sale Bid Bond shall guarantee payment of the bid deposit **within ten days of auction.**
- B. The balance between the bid bond and the Initial Deposit payment is due **by 4:30 p.m., on the day of auction.**
- C. Additional forms and instructions for a Per Sale Bid Bond are available at any DNR region office.

Timber Sale Statewide Bid Bond

- A. Statewide Bid Bonds shall guarantee payment of the Initial Deposit on any statewide timber sale while the bond is in effect.
- B. The Statewide Bid Bond must be received by the Department of Natural Resources, Product Sales and Leasing Division, P.O. Box 47014, Olympia, Washington, 98504-7014, ten days in advance of the auction date. The bond shall be in the amount of \$150,000.00.
- C. Successful bidders using a Statewide Bid Bond must pay the total Initial Deposit payment (10% of the total bid price) **by 4:30 p.m., on the day of the auction.**
- D. A Statewide Bid Bond cannot be used to secure the Initial Deposit payment due the day of auction.
- E. Additional forms and instructions for a statewide bid bond are available at any DNR region office.

Payments

The initial deposit for a sale is 10% of the total bid value as submitted by the apparent high bidder (25% if the bidder is a defaulter as defined under WAC 332-140-300) and never less than \$5,000.00 for lump sum sales. For Lump Sum sales appraised at less than \$5,000.00, the entire bid value is due on day of auction.

- A. Apparent high bidders using cash, certified check, cashiers' check or money order as a bid deposit must pay the total Initial Deposit amount by 4:30 p.m. on auction day.
- B. Apparent high bidders using a Timber Sale Per Sale Bid Bond as a bid deposit must pay the difference between the bid deposit and the total initial deposit by 4:30 p.m., on the day of auction. The bid bond amount must be replaced with a certified check, cashiers' check, bank draft, cash, money order, or wire transfer within ten days of the auction.
- C. Apparent high bidders using a Timber Sale Statewide Bid Bond must pay the entire Initial Deposit amount by 4:30 p.m. on the day of auction.

Fees due on the day of sale must be paid by 4:30 p.m.

All payments must be in the form of a certified check, cashiers' check, bank draft, cash, money order or wire transfer.

Eligibility to Bid

In order to bid on State timber sales you must be:

- 18 years of age (or have a co-signer who meets the eligibility requirements)
- Licensed to do business in the State of Washington
- Eligible to bid on Export Restricted timber
- Authorized to submit bids

Authorized Representatives

Company officers or company authorized representatives may bid on State sales, sign State documents, or sign checks. A list of authorized representatives and their specific authorities must be submitted, in writing, to the Department of Natural Resources, Product Sales and Leasing Division, P.O. Box 47014, Olympia, Washington, 98504-7014, ten days in advance of the auction. A company owner or officer must sign this submittal.



Summary Report of All Sales for the Month of August 2018

Board Sales

<u>County</u>	<u>Region</u>	<u>Agree #</u>	<u>FSC® Sale Name</u>	<u>Volume</u>	<u>Value</u>
Grays Harbor	Pacific Cascade	96843	ROLLER SORTS	6,128	\$4,725,727.00
Jefferson	Olympic	95343	LOFTY VRH WMZ	5,378	\$2,134,000.00
Lewis	Pacific Cascade	96829	BLOCKBUSTER SORTS	7,281	\$4,875,990.00
Lewis	Pacific Cascade	96930	THE VILLAGE	2,754	\$1,050,000.00
Skagit	Northwest	96339	CRANE KEY VRH RMZ	3,061	\$1,051,000.00
Snohomish	Northwest	96336	HIDDEN GEMS	3,032	\$1,174,000.00
Whatcom	Northwest	96706	SOUTH DIKE VRH RMZ	2,221	\$802,000.00
Yakima	Southeast	96785	RATTLESNAKE PUNCH SORTS	3,008	\$1,829,525.00
			Total	<u>32,863</u>	<u>\$17,642,242.00</u>



*Scan with your smartphone or tablet to go
to the August 2018 timber auction page*



TIMBER NOTICE OF SALE

Use the following rates for estimating taxable stumpage:

Harvest Cost = \$0.00 per MBF for sorts 12, 13, 14 and 15 and \$12.00 per Ton for sorts 16 and 17.

Hauling Services Payment Rate per Ton
= (Base Rate + Mileage Rate) x (Contractor's hauling bid factor)

Base Rate = \$2.35 per ton

Mileage Rate = $(\$0.16 \times C \text{ miles}) + (\$0.11 \times A \text{ miles}) \times \text{Fuel Index Factor}$

ARRF = \$0.00 per MBF for sorts 16 and 17 and \$26.75 per MBF for sorts 12, 13, 14 and 15.

Note: To calculate ARRF rates per ton use the tons\mbf conversion factor in the table above.

CONFIRMATION: Each sort is subject to confirmation following auction. Sorts will not be confirmed until at least 10 days after auction. Final contract award is contingent upon the State's haul cost analysis. Actual haul route may vary and is subject to change at the State's discretion.

SPECIAL REMARKS: The successful Purchaser(s) will be required to purchase logs from the sale area upon delivery to their location specified in the bid submitted. Logs will be delivered to the Purchaser's delivery location by the State's contract harvester. Purchaser is responsible for weighing and scaling costs. All tonnage loads will be weighed and all mbf loads will be scaled at State approved locations. The State reserves the right to determine where logs are authorized to be scaled and weighed.

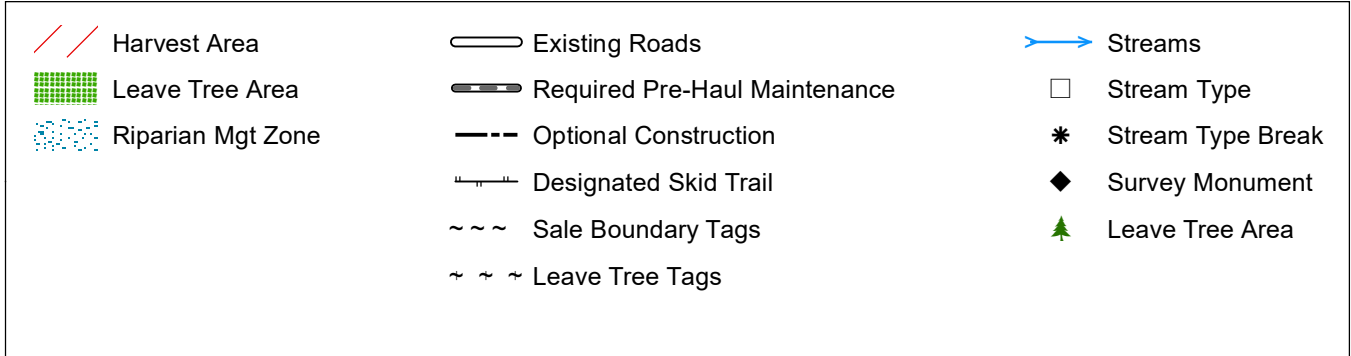
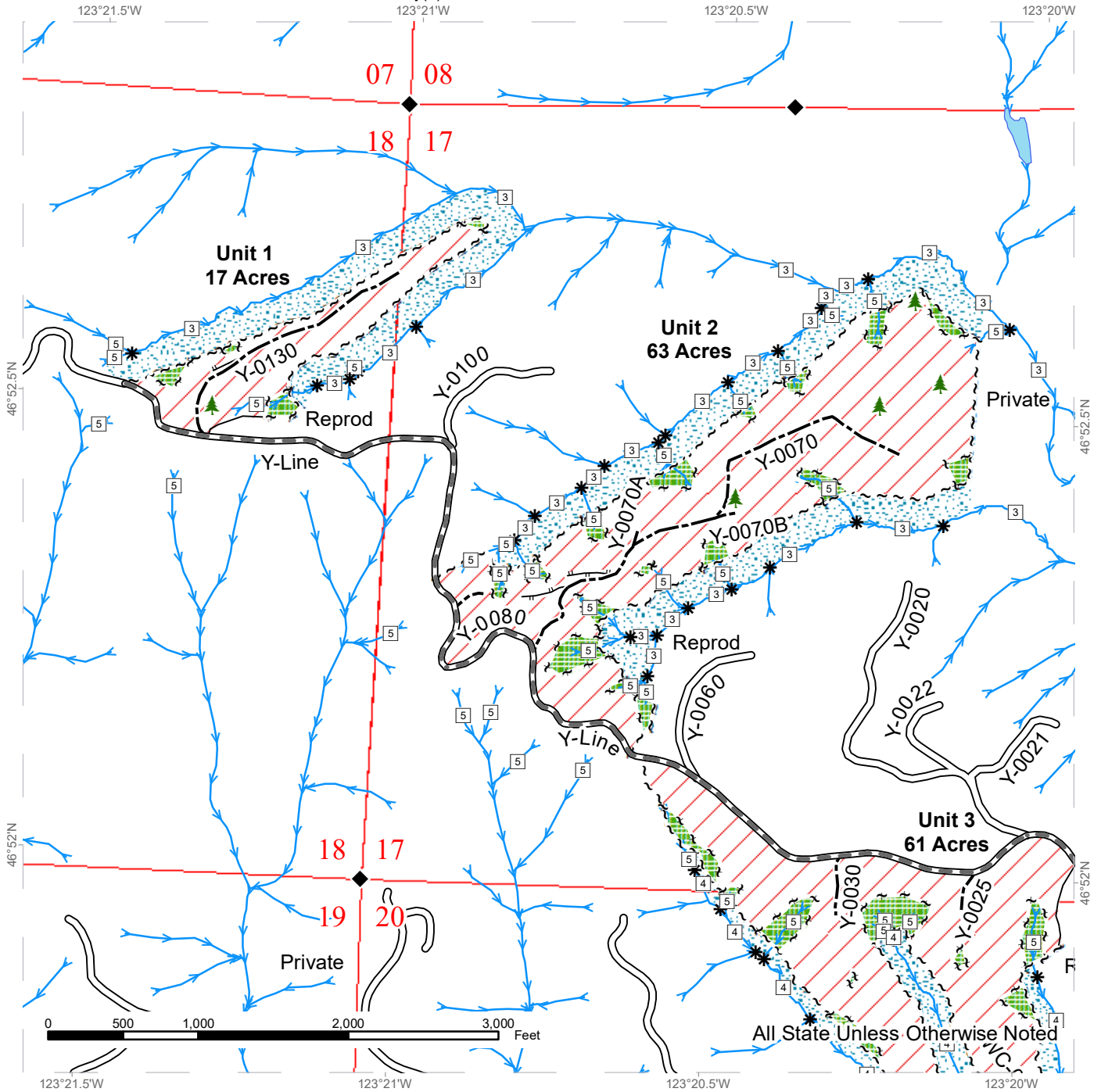
ROW sorts will be auctioned August 30, 2018. All other sorts will be auctioned December 20, 2018.

For more information regarding this log sort sale visit our web site:
<http://www.dnr.wa.gov/programs-and-services/product-sales-and-leasing/timber-sales/timber-auction-packets>. If you have questions call Josh Watten at the Pacific Cascade Region Office at (360)577-2025 or Steve Teitzel at the Product Sales and Leasing Division Office in Olympia at (360)902-1741.

TIMBER SALE MAP

SALE NAME: ROLLER SORTS
AGREEMENT #: 30-096843
TOWNSHIP(S): T16R05W
TRUST(S): Common School and Indemnity(3)

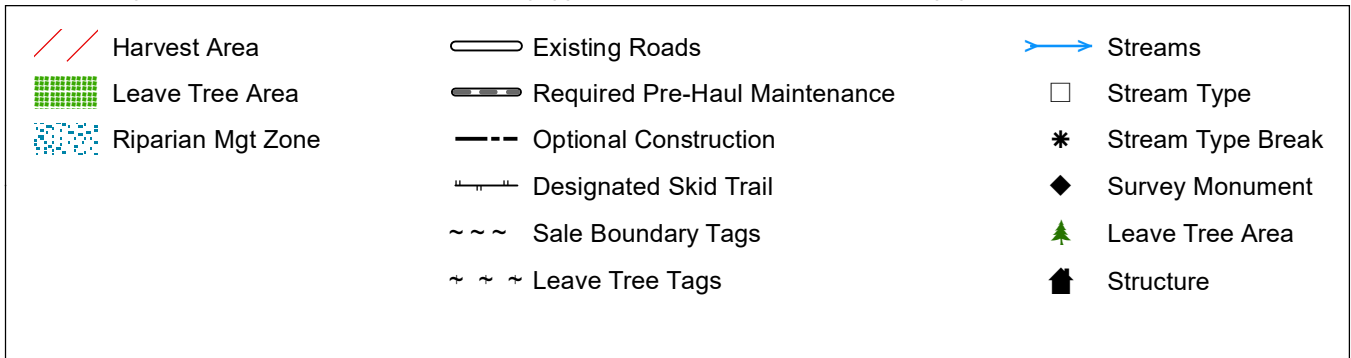
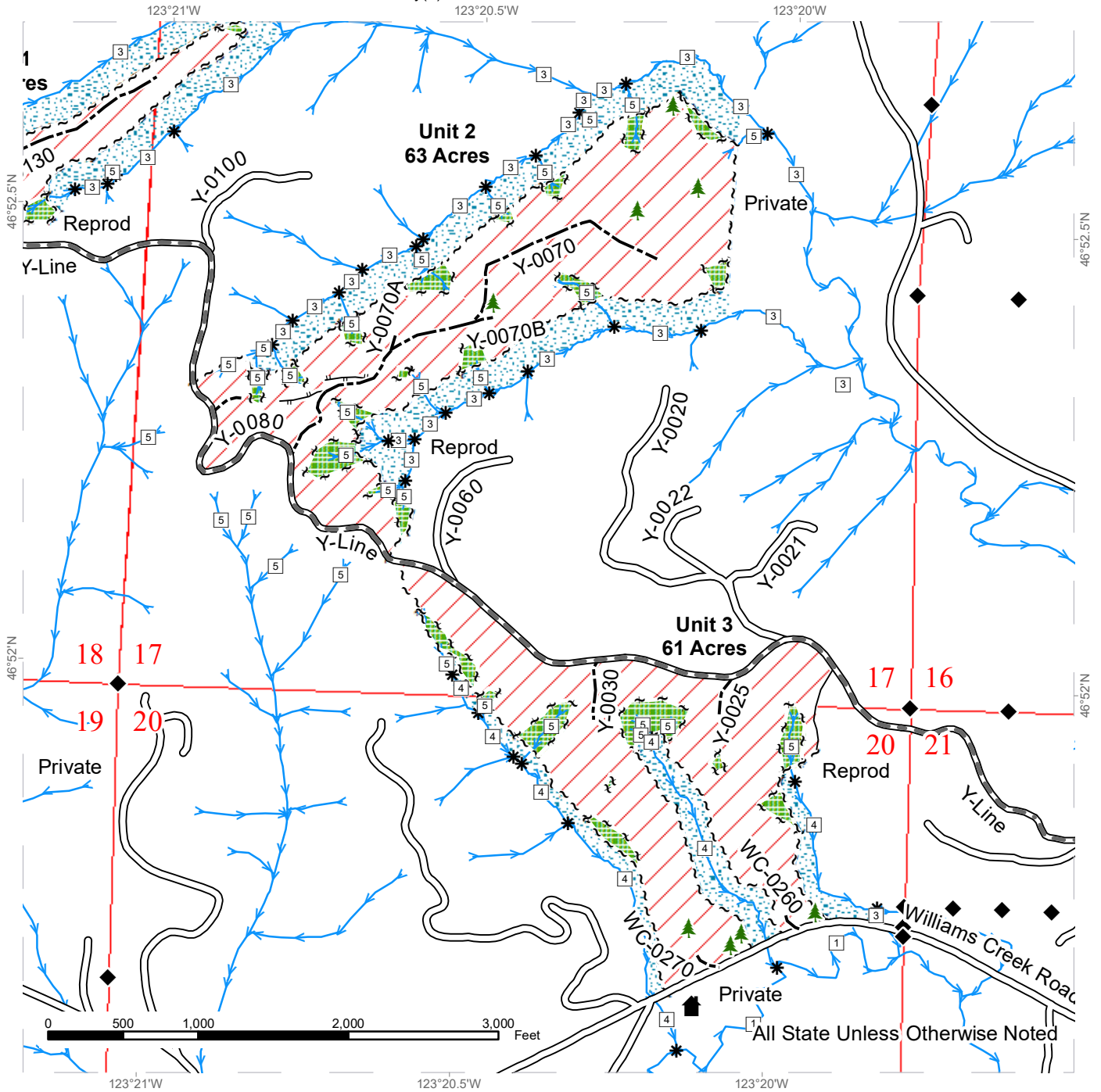
REGION: Pacific Cascade Region
COUNTY(S): GRAYS HARBOR
ELEVATION RGE: 121-663



TIMBER SALE MAP

SALE NAME: ROLLER SORTS
AGREEMENT #: 30-096843
TOWNSHIP(S): T16R05W
TRUST(S): Common School and Indemnity(3)

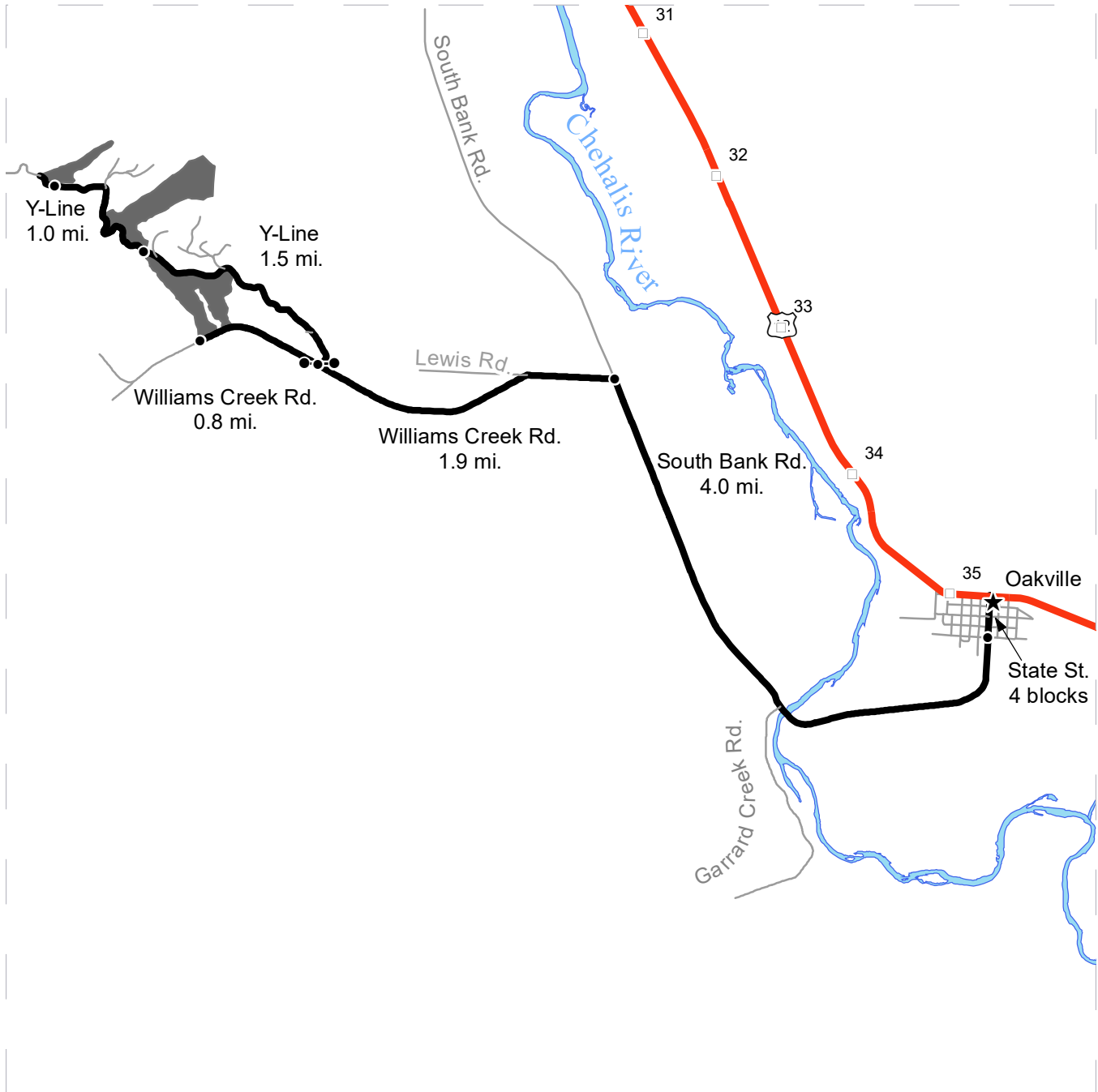
REGION: Pacific Cascade Region
COUNTY(S): GRAYS HARBOR
ELEVATION RGE: 121-663







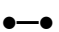


DRIVING MAP

SALE NAME: ROLLER SORTS
AGREEMENT#: 30-096843
TOWNSHIP(S): T16R05W
TRUST(S): Common School and Indemnity(3)

REGION: Pacific Cascade Region
COUNTY(S): GRAYS HARBOR
ELEVATION RGE: 121-663



	Timber Sale Unit
	Highway
	Haul Route
	Other Road
	Milepost Markers
	Distance Indicator
	Gate (PCP 1-1)

Driving Directions:

From US Highway 12 (milepost 35) turn south onto State Street and follow for 4 blocks, becoming South Bank Road; follow for 4 miles over the Chehalis River bridge. Turn left onto Williams Creek Road; follow for 1.9 miles to the Y-line. Follow Williams Creek Road for another 0.8 miles for Unit 3 (on right); or turn right onto the Y-line through the gate for 1.5 miles for Unit 2 (on right) and Unit 3 (on left); or continue an additional 1.0 miles on the Y-line for Unit 1 (on right).





TIMBER NOTICE OF SALE

SALE NAME: LOFTY

AGREEMENT NO: 30-95343

AUCTION: August 29, 2018 starting at 10:00 a.m., Olympic Region Office, Forks, WA

COUNTY: Jefferson

SALE LOCATION: Sale located approximately 2 miles south of Quilcene, WA

PRODUCTS SOLD AND SALE AREA:

All timber ,except trees marked with a band of blue paint or bounded out by leave tree tags, downed red cedar or timber that has been on the ground for 5 years or more (five years is defined by more than 1.5 inches of sap rot), timber sale boundary tags in Units 1, 2 and 3; timber sale boundary tags and special management tags in Unit 4; timber sale boundary tags, special management unit boundary tags and pink flag line in Unit 5; timber sale boundary tags, PT-Q-1230 road, timber type change in Unit 6; timber sale boundary tags,timber type change in Unit 7.

All timber bounded by right-of-way tags on the PT-Q-1400 road from station 0+00 to station 12+22, the PT-Q-1410 road from station 0+00 to station 5+10 and the PT-Q-1510 road from station 0+00 to station 6+69 except titled timber that is not conveyed to the Purchaser unless the road segments are actually constructed. on part(s) of Sections 11 all in Township 26 North, Range 2 West, Sections 25, 26 and 27 all in Township 27 North, Range 2 West, W.M., containing 100 acres, more or less.

CERTIFICATION: This sale is certified under the Sustainable Forestry Initiative® program Standard (cert no: BV-SFIS-US09000572)

ESTIMATED SALE VOLUMES AND QUALITY:

Table with columns: Species, Avg DBH, Ring Count, Total MBF, and MBF by Grade (1P, 2P, 3P, SM, 1S, 2S, 3S, 4S, UT). Rows include Douglas fir, Hemlock, Red cedar, Maple, Red alder, and Sale Total.

MINIMUM BID: \$2,134,000.00

BID METHOD: Sealed Bids

PERFORMANCE SECURITY:

\$100,000.00

SALE TYPE: Lump Sum

EXPIRATION DATE: October 31, 2021

ALLOCATION: Export Restricted

BID DEPOSIT: \$213,400.00 or Bid Bond. Said deposit shall constitute an opening bid at the appraised price.

HARVEST METHOD: 60% ground and 40% uphill cable. No rubber tired skidders from November 1 to April 30. Ground based equipment will not permitted on slopes over 40%. Falling and Yarding will not be permitted from November 1 to June 30 unless authorized in writing by the Contract Administrator Falling and yarding for the ground based portion of Unit 2 and for Units 4, 5 and 7 are restricted from November 1 to April 30, on weekends or State



TIMBER NOTICE OF SALE

recognized holidays, before 6:00 a.m. or after 8:00 p.m., unless authorized in writing by the contract administrator. Harvest operations for cable portions of Units 2 and 3 are restricted from May 1 to October 31 as consistent with USFS Road Use Permit for FS 2730 road, on weekends or State recognized holidays, before 6:00 a.m. or after 8:00 p.m., unless otherwise approved by Contract Administrator

ROADS:

12.33 stations of required reconstruction. 27.17 stations of optional construction. 3.35 stations of optional reconstruction. 261.60 required road maintenance, 106.26 of optional maintenance. 12.33 stations of required road deactivation and 15.8 stations if roads are built. Road construction will not be permitted from November 1 to April 30 unless authorized in writing by the Contract Administrator except for FS 2730 and Equip 2730 roads which are restricted from May 1 to October 31 as consistent with the USFS Road Use Permit. The hauling of forest products will not be permitted from November 1 to April 30 unless authorized in writing by the Contract Administrator. Road work and hauling of rock will not be permitted from November 1 to April 30 on all roads except for the FS 2730 and Equip 2730, road work, hauling of rock and timber hauling will not be permitted from May 1 to October 31 as consistent with RUP. Road work, hauling of rock and timber hauling on any roads will not be permitted on weekends or State recognized holidays, before 6:00 a.m. or after 8:00 p.m. unless authorized in writing by the Contract Administrator.

ACREAGE DETERMINATION

CRUISE METHOD:

Sale acreage was 97% GPS's and 3% hand traversed. Sale units were cruised using a variable plot sample.

FEES:

Within seven days of sale date, purchaser must provide Department of Natural Resources with a cashier's check in the amount of \$4,786.75 made payable to USDA Forest Service for a road use permit and a cashier's check in the amount of \$543.00 made payable to the Department of Natural Resources for a guyline permit. \$95,460 is due on day of sale. \$95,460.00 is due on day of sale. \$9.00 per MBF is due upon removal. These are in addition to the bid price.

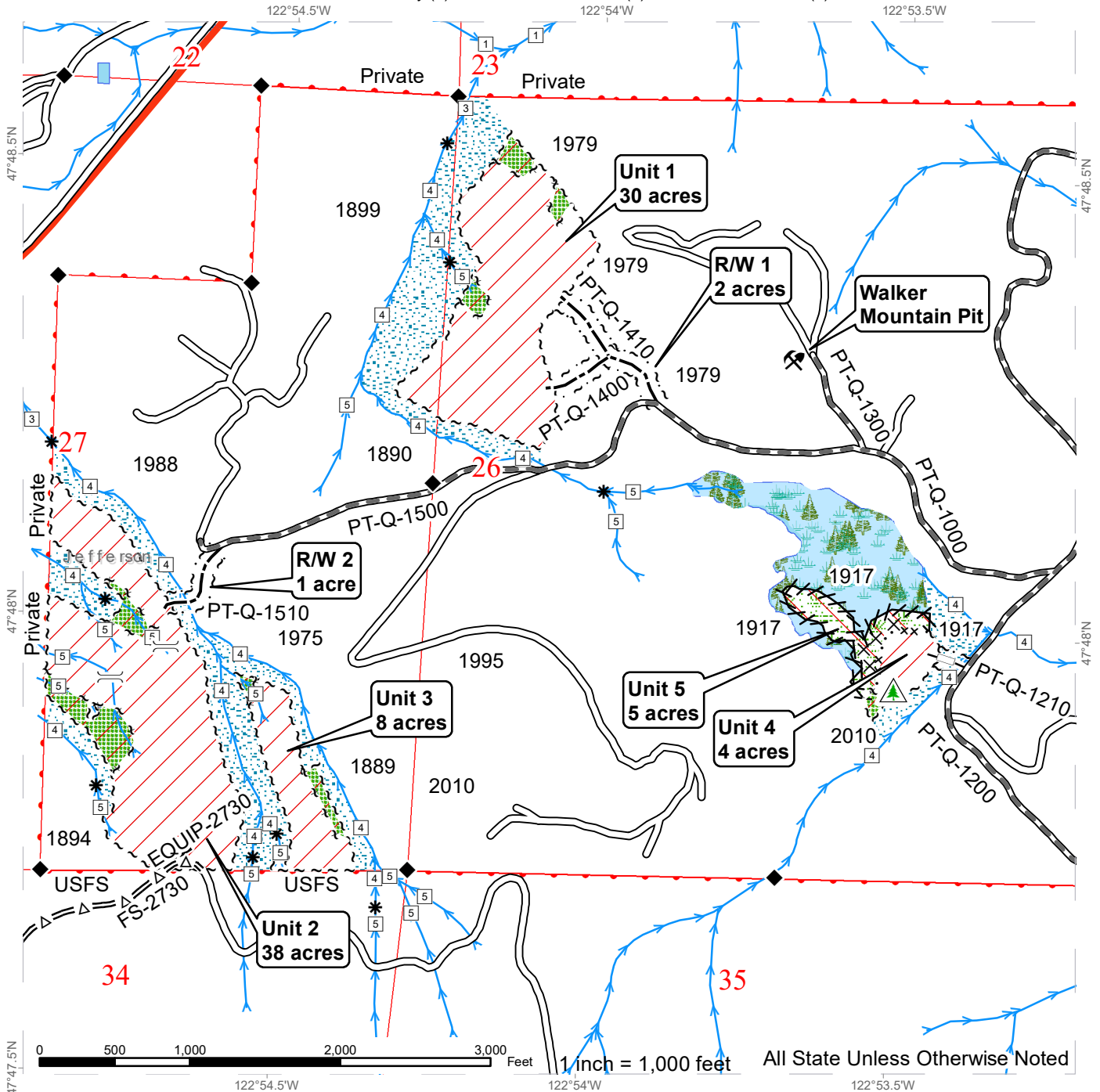
SPECIAL REMARKS:

There are locked gates on the PT-Q-1000 (Perkin's Gate) and the FS 2730, contact the Olympic Region Dispatch Center at 360-374-2800 to obtain an AA-1-key. Intermediate supports may be needed to log the North half of Unit 1. Yarding profiles for Unit 3 are available for viewing at the Olympic Region Office. Drilling and shooting will be required for landing construction on the FS 2730 road.

TIMBER SALE MAP

SALE NAME: LOFTY
AGREEMENT #: 30-095343
TOWNSHIP(S): T27R2W
TRUST(S): Common School and Indemnity (3), State Forest Purchase (2), State Forest Transfer (1)

REGION: Olympic Region
COUNTY(S): Jefferson
ELEVATION RGE: 378-1565

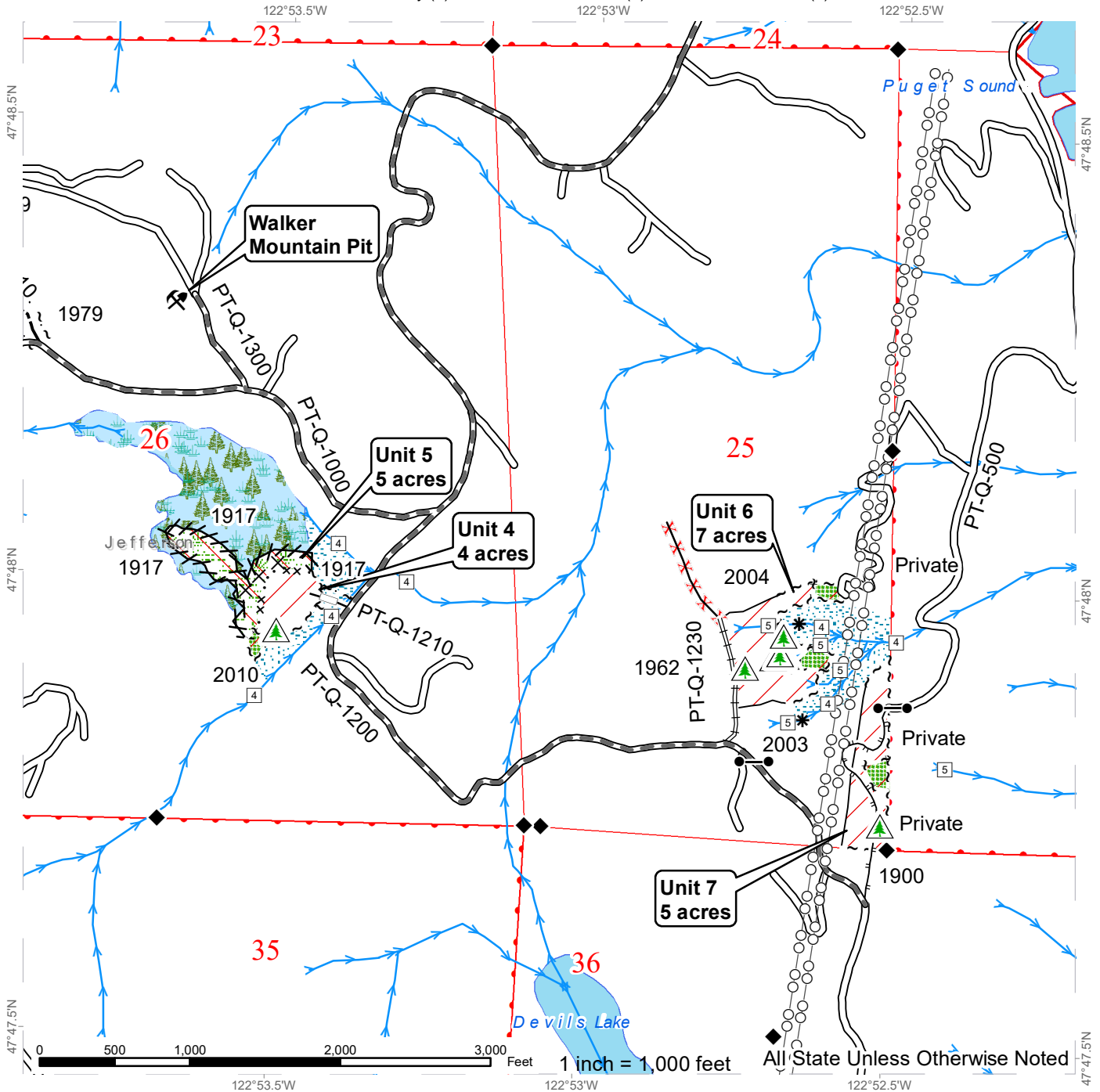


Variable Retention Harvest	Sale Boundary Tags	Existing Roads	Stream Type
Variable Density Thinning	Special Mgmt Area	Required Pre-Haul Maintenance	Stream Type Break
Leave Tree Area	Leave Tree Tags	Optional Pre-Haul Maintenance	Survey Monument
Riparian Mgt Zone	Right of Way Tags	Optional Construction	Designated Crossing
Forested Wetland	Pink Flag Line	Optional Reconstruction	Non-Tradeable Leave Trees
Wetland Mgt Zone		Streams	Rock Pit
Property Lines			Take Tree

TIMBER SALE MAP

SALE NAME: LOFTY
AGREEMENT #: 30-095343
TOWNSHIP(S): T27R2W
TRUST(S): Common School and Indemnity (3), State Forest Purchase (2), State Forest Transfer (1)

REGION: Olympic Region
COUNTY(S): Jefferson
ELEVATION RGE: 378-1565

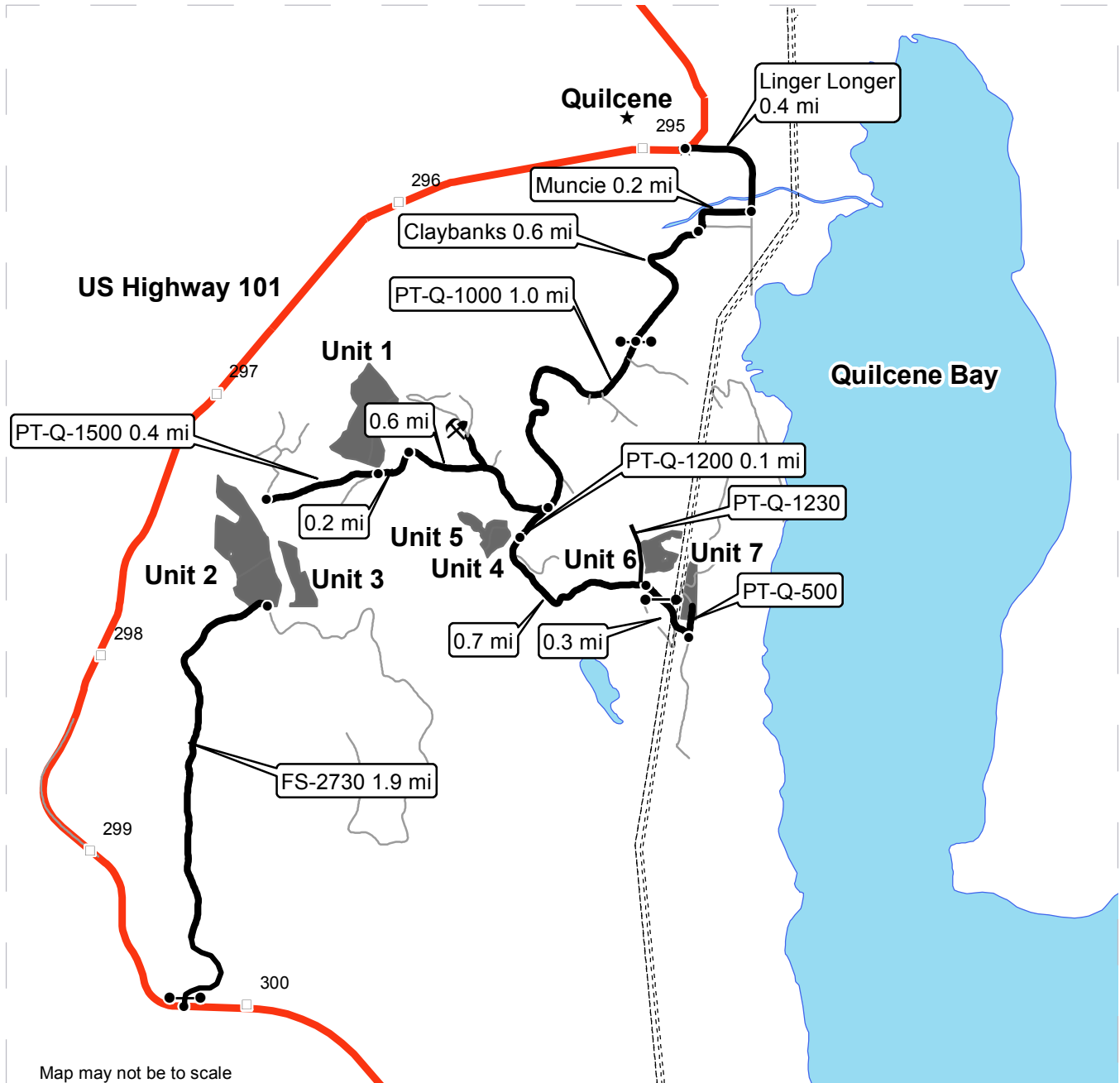




DRIVING MAP

SALE NAME: LOFTY
 AGREEMENT#: 30-095343
 TOWNSHIP(S): T27R02W
 TRUST(S): Common School and Indemnity(3), State Forest Purchase(2), State Forest Transfer(1)

REGION: Olympic Region
 COUNTY(S): JEFFERSON
 ELEVATION RGE: 284-1565



Map may not be to scale

- Timber Sale Unit
- Highway
- Haul Route
- Existing Road
- Milepost Markers
- BPA Power Lines
- Distance Indicator
- Gate (<AA1>)
- Rock Pit
- City

DRIVING DIRECTIONS:

From HWY 101 at Quilcene, turn east on Linger Longer Rd. Travel 0.4 miles then turn west on Muncie Ave. Travel 0.2 miles then turn south on Claybanks Rd. Travel 0.6 miles then continue through yellow gate onto PT-Q-1000. Travel 1.0 mile to junction of PT-Q-1000 and PT-Q-1200.

Unit 1: Travel 0.6 miles west on PT-Q-1000. Access via new road R/W.

Unit 2: Continue 0.2 miles past Unit 1, bear right on PT-Q-1500 for 0.4 miles. Follow new R/W.

Unit 3: Follow FS-2730 from HWY 101 for 1.9 miles to upper Unit 2, walk in east through RMZ.

Unit 4: Past the junction of PT-Q-1000 and PT-Q-1200, follow the PT-Q-1200 for 0.1 miles to new R/W on right. Walk into unit on new R/W through RMZ.

Unit 5: Continue walking through Unit 4 to blue SMUB tagged WMZ thinning.

Unit 6: Past Unit 4 continue 0.7 miles on PT-Q-1200 to the PT-1230. Park on left and walk in.

Unit 7: Past PT-1230 follow PT-Q-1200 for another 0.3 miles through BPA line and park on left. Walk BPA access road (PT-Q-500) north through unit.





TIMBER NOTICE OF SALE

TIMBER EXCISE

TAX:

Purchaser must pay the forest excise taxes associated with the log sorts delivered to them. The tax rate for this sale is 4.2 %. Taxable Stumpage = Total Delivered Value – (Harvest Cost + Estimated Haul Cost + ARRF). For more information contact the Department of Revenue, Forest Tax Section at 1-800-548-8829.

Use the following rates for estimating taxable stumpage:

Harvest Cost = \$0.00 per MBF for sorts 14, 15, 16 and 17 and \$12.00 per Ton for sorts 18 and 19.

Hauling Services Payment Rate per Ton
= (Base Rate + Mileage Rate) x (Contractor's hauling bid factor)

Base Rate = \$2.35 per ton

Mileage Rate = $((\$0.16 \times C \text{ miles}) + (\$0.11 \times A \text{ miles})) \times \text{Fuel Index Factor}$

ARRF = \$0.00 per MBF for sorts 18 and 19 and \$26.75 per MBF for sorts 14, 15, 16 and 17.

Note: To calculate ARRF rates per ton use the tons\mbf conversion factor in the table above.

CONFIRMATION:

Each sort is subject to confirmation following auction. Sorts will not be confirmed until at least 10 days after auction. Final contract award is contingent upon the State's haul cost analysis. Actual haul route may vary and is subject to change at the State's discretion.

SPECIAL REMARKS:

The successful Purchaser(s) will be required to purchase logs from the sale area upon delivery to their location specified in the bid submitted. Logs will be delivered to the Purchaser's delivery location by the State's contract harvester. Purchaser is responsible for weighing and scaling costs. All tonnage loads will be weighed and all mbf loads will be scaled at State approved locations. The State reserves the right to determine where logs are authorized to be scaled and weighed.

ROW sorts will be auctioned August 30, 2018. All other sorts will be auctioned February 28, 2019.

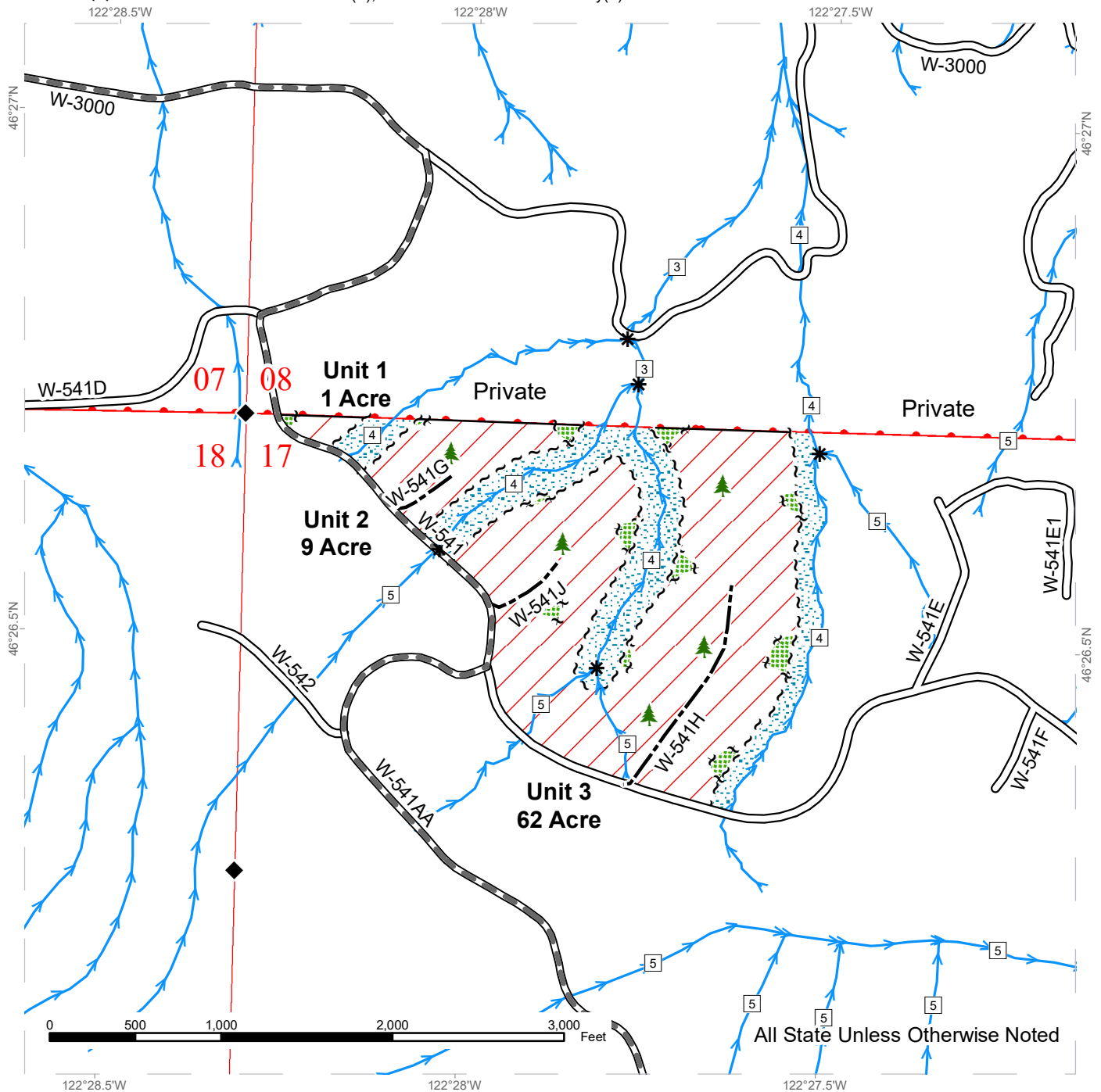
For more information regarding this log sort sale visit our web site:

<http://www.dnr.wa.gov/programs-and-services/product-sales-and-leasing/timber-sales/timber-auction-packets>. If you have questions call Josh Watten at the Pacific Cascade Region Office at (360)577-2025 or Steve Tietzel at the Product Sales and Leasing Division Office in Olympia at (360)902-1741.

TIMBER SALE MAP

SALE NAME: BLOCKBUSTER
AGREEMENT #: 30-096829
TOWNSHIP(S): T11R03E
TRUST(S): State Forest Transfer(1), Common School and Indemnity(3)

REGION: Pacific Cascade Region
COUNTY(S): LEWIS
ELEVATION RGE: 1388-1711



All State Unless Otherwise Noted

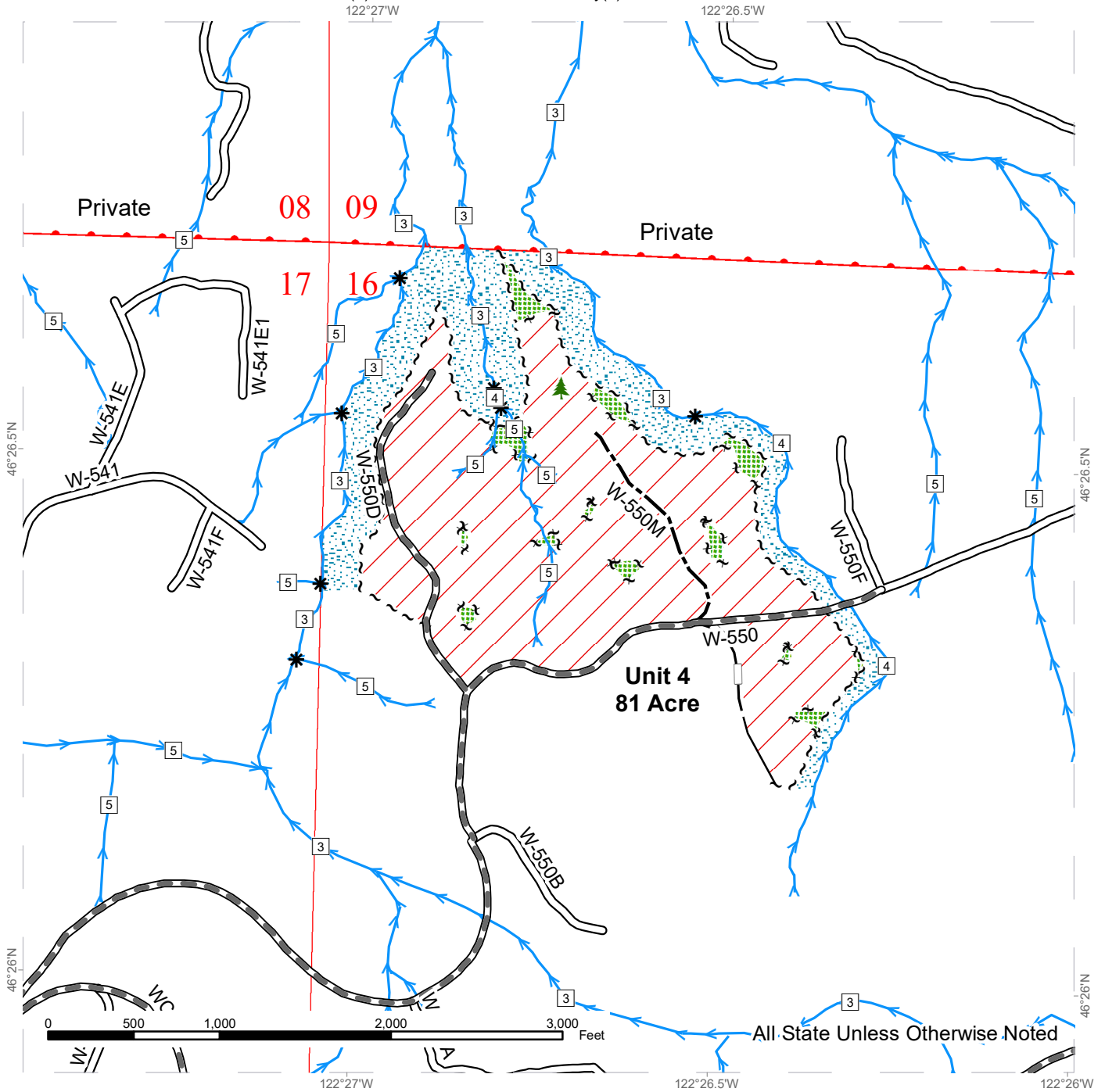
Variable Retention Harvest	Sale Boundary Tags	Leave Tree Area
Leave Tree Area	Leave Tree Tags	Stream Type
Riparian Mgt Zone	Timber Type Change	Stream Type Break
	Existing Roads	Survey Monument
	Required Pre-Haul Maintenance	
	Optional Construction	



TIMBER SALE MAP

SALE NAME: BLOCKBUSTER
AGREEMENT #: 30-096829
TOWNSHIP(S): T11R03E
TRUST(S): State Forest Transfer(1), Common School and Indemnity(3)

REGION: Pacific Cascade Region
COUNTY(S): LEWIS
ELEVATION RGE: 1388-1711



	Variable Retention Harvest		Sale Boundary Tags		Leave Tree Area
	Leave Tree Area		Leave Tree Tags		Stream Type
	Riparian Mgt Zone		Timber Type Change		Stream Type Break
			Existing Roads		
			Required Pre-Haul Maintenance		
			Optional Construction		
			Optional Reconstruction		

DRIVING MAP

SALE NAME: BLOCKBUSTER
AGREEMENT#: 30-096829
TOWNSHIP(S): T11R03E
TRUST(S): State Forest Transfer(1), Common School and Indemnity(3)

REGION: Pacific Cascade Region
COUNTY(S): LEWIS
ELEVATION RGE: 1388-1711



Map may not be to scale
1:90,000

	Timber Sale Unit	<u>DRIVING DIRECTIONS:</u> From US Highway 12, between MP 82 and 83, turn south onto Winston Creek Road. Follow Winston Creek Road for 3.6 miles. Continue south onto Salmon Creek Road for 1.3 miles until the W-3000 on the left. Take the W-3000 for 3.8 miles. Continue south onto the W-541 for 0.4 miles to reach Units 1, 2, and 3. Continue on the W-541 for 0.4 miles. Continue south onto the W-541AA for 1.0 mile. Turn east onto the W-500 for 1.0 mile to Unit 4.
	Highway	
	Haul Route	
	Other Road	
	Milepost Markers	
	Distance Indicator	
	Rock Pit	





TIMBER NOTICE OF SALE

SALE NAME: THE VILLAGE

AGREEMENT NO: 30-96930

AUCTION: August 30, 2018 starting at 10:00 a.m., COUNTY: Lewis
Pacific Cascade Region Office, Castle Rock, WA

SALE LOCATION: Sale located approximately 4 miles southwest of Mossyrock

PRODUCTS SOLD AND SALE AREA:

All timber, except trees marked with blue paint, trees bound out by yellow "Leave Tree Area" tags with pink flagging, snags, and all down timber existing 5 years prior to the day of sale, bound by the following: white "Timber Sale Boundary" tags and pink flagging, private property marked with pink flagging and white carsonite posts in Units 1 and 3; white "Timber Sale Boundary" tags and pink flagging, private property marked with pink flagging and white carsonite posts, and Hadaller Road in Unit 2; white "Timber Sale Boundary" tags and pink flagging, private property, and reprod in Unit 4; white "Timber Sale Boundary" tags and pink flagging in Unit 5; white "Timber Sale Boundary" tags and pink flagging, reprod, and the W-1000 Road in Unit 6. All timber bounded by orange "Right of Way Boundary" tags and orange flagging in Unit 7 on part(s) of Sections 27, 28 and 34 all in Township 12 North, Range 2 East, W.M., containing 87 acres, more or less.

CERTIFICATION: This sale is certified under the Sustainable Forestry Initiative® program Standard (cert no: BV-SFIS-US09000572)

ESTIMATED SALE VOLUMES AND QUALITY:

Table with columns: Species, Avg DBH, Ring Count, Total MBF, and MBF by Grade (1P, 2P, 3P, SM, 1S, 2S, 3S, 4S, UT). Rows include Douglas fir, Red alder, Hemlock, Maple, Red cedar, Cottonwood, and Sale Total.

MINIMUM BID: \$1,050,000.00 BID METHOD: Sealed Bids

PERFORMANCE SECURITY: \$100,000.00 SALE TYPE: Lump Sum

EXPIRATION DATE: October 31, 2020 ALLOCATION: Export Restricted

BID DEPOSIT: \$105,000.00 or Bid Bond. Said deposit shall constitute an opening bid at the appraised price.

HARVEST METHOD: Cable and Shovel. Harvesting activities are estimated to be 25% cable harvesting and 75% Shovel. Shovel operations shall be restricted during saturated soil conditions. Shovel operations shall be restricted to slopes of 40% and less, See clause H-140 for further harvest requirements. A detailed felling and yarding plan shall be required prior to any harvest activities and approved in writing by the Contract Administrator Shovel Yarding



TIMBER NOTICE OF SALE

will not be permitted from November 1 to April 30 unless authorized in writing by the Contract Administrator.

ROADS:

1.80 stations of required construction. 46.00 stations of optional construction. 146.80 stations of required pre-haul maintenance. 1.80 stations of required decommission. 15.90 stations of light abandonment, if built. Rock for construction, reconstruction, and pre-haul maintenance under this contract may be obtained at no cost to the Purchaser from the following rock source; from the W-2020 Pit located in Section 03, Township 11 North, Range 02 East, WM, Rock used in accordance with quantities on the ROCK LIST may also be obtained from any commercial source at the Purchaser's expense and subject to approval in writing by the Contract Administrator before their use. Road construction will not be permitted from November 1 to April 30 unless authorized in writing by the Contract Administrator all roads all work The hauling of forest products will not be permitted from November 1 to April 30 unless authorized in writing by the Contract Administrator on the W-1700, W-1701, W-1707A, and W-1702 roads

ACREAGE DETERMINATION

CRUISE METHOD: The sale acres were determined by GPS delineation. Cruise was completed using variable plot cruise methods.

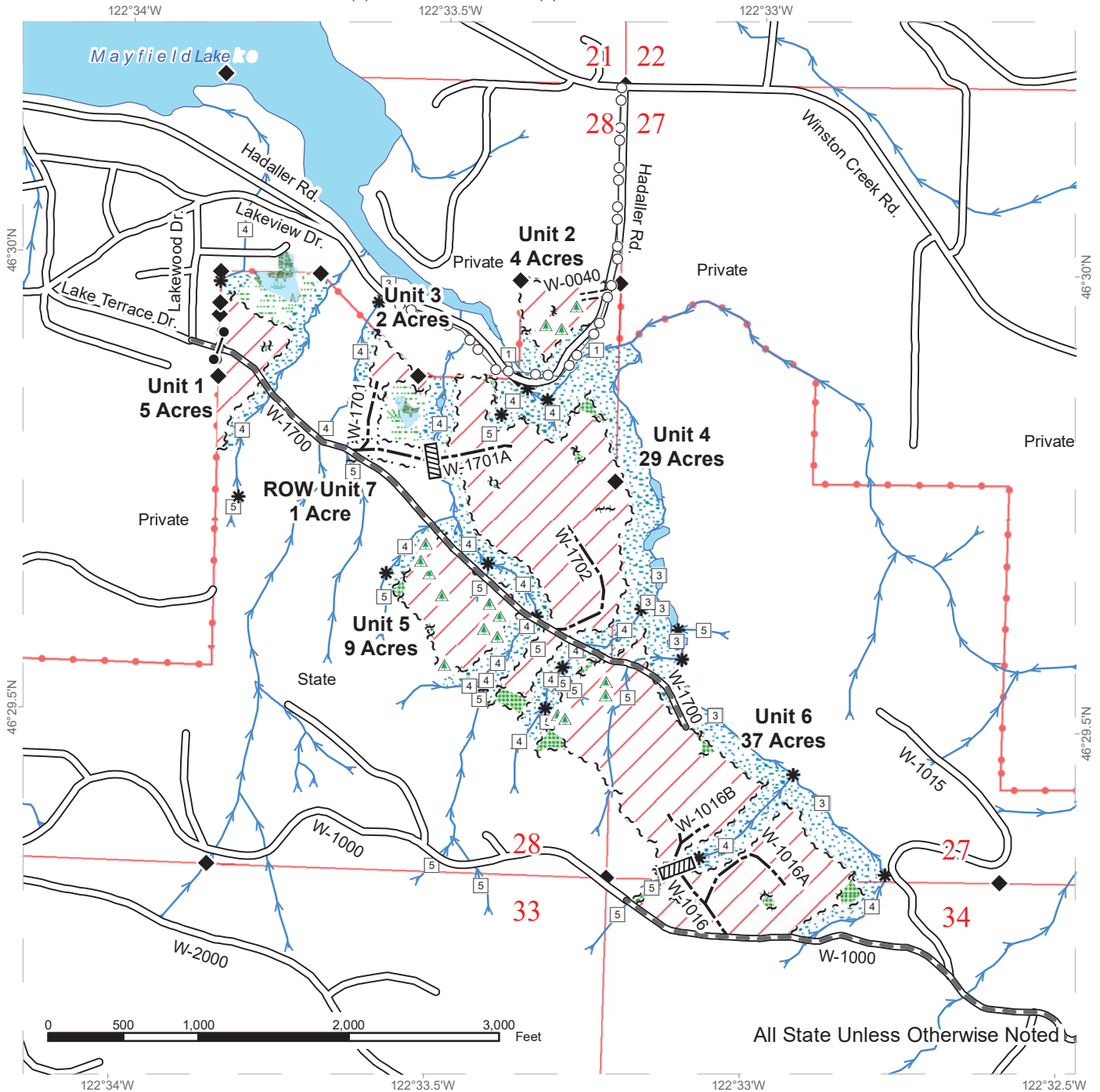
FEES: \$48,900.00 is due on day of sale. \$9.00 per MBF is due upon removal. These are in addition to the bid price.

SPECIAL REMARKS: This sale has approximately 345 MBF of high quality 2 saw DF, 144 MBF of high quality 3 saw DF, 9 MBF of SM DF, 19 MBF of WH 2 saw, 25 MBF of WH 3 saw. See Cruise Report for more details. No haul on the W-1700 before 7AM.

TIMBER SALE MAP

SALE NAME: THE VILLAGE
AGREEMENT #: 30-096930
TOWNSHIP(S): T12R02E
TRUST(S): State Forest Transfer(1), State Forest Purchase(2)

REGION: Pacific Cascade Region
COUNTY(S): LEWIS
ELEVATION RGE: 508-1073



Variable Retention Harvest	Existing Roads	Sale Boundary Tags	Culvert
Leave Tree Area	Required Pre-Haul Maintenance	Leave Tree Tags	Gate (PCP 1-1)
Riparian Mgt Zone	Required Construction	Right of Way Tags	Non-Tradeable Leave Trees
Forested Wetland	Optional Construction	Power Lines	Survey Monument
Wetland Mgt Zone		Streams	Stream Type
Open Water			Stream Type Break



DRIVING MAP

SALE NAME: THE VILLAGE
AGREEMENT#: 30-096930
TOWNSHIP(S): T12R02E
TRUST(S): State Forest Transfer(1), State Forest Purchase(2)

REGION: Pacific Cascade Region
COUNTY(S): LEWIS
ELEVATION RGE: 508-1073



Map may not be to scale

- Timber Sale Unit
- Haul Route
- Other Road
- Highway
- Milepost Markers
- 122 State Rte. 122
- 12 US Hwy. 12
- Distance Indicator
- Gate (PCP1-1)
- Rock Pit

DRIVING DIRECTIONS:

From highway 12 between miles 82 and 83, turn south onto Winston Creek Rd. and follow for 1.6 miles to Hadaller Rd.

Units 1-5: Turn right onto Hadaller Rd. Continue 0.3 miles to unit 2.

Unit 1, 3-6: follow Hadaller Rd. for 0.7 miles to Lakeview Dr. Veer left onto Lakeview Dr. and go 0.2 miles to Lakewood Dr. Turn left onto Lakewood Dr. and follow 0.2 miles to the W-1700 junction. Turn left onto the W-1700 (gate), Unit 1 is at the gate. Follow for 0.3, 0.6, and 0.4 and 0.7 miles to Units 3, 4, 5, and 6 respectively.

Unit 6: Continue on Winston Creek Rd. for 2.0 miles until it turns in to Salmon Creek Rd. Continue on Salmon Creek Rd. for 0.6 miles to the W-1000. Turn right onto the W-1000 and follow for 1.6 miles to Unit 6.

W-2020 Rock Pit: Continue on Salmon Creek 0.5 miles to the W-2000. Turn right and follow the W-2000 for 0.7 miles to the W-2020. Turn left and follow the W-2020 for 0.1 miles to arrive in the 2020 Pit.





TIMBER NOTICE OF SALE

SALE NAME: CRANE KEY VRH RMZ

AGREEMENT NO: 30-96339

AUCTION: August 29, 2018 starting at 10:00 a.m., COUNTY: Skagit Northwest Region Office, Sedro Woolley, WA

SALE LOCATION: Sale located approximately 14 miles north of Arlington, WA

PRODUCTS SOLD AND SALE AREA:

All timber bounded by white timber sale boundary tags and CN-34 Road, (including cedar salvage of preexisting dead and down cedar trees and cedar logs only), except cedar snags, trees marked with blue paint on the bole and root collar, forest products tagged out by blue special management tags (WMZs/RMZs), and forest products tagged out by yellow leave tree area tags in Unit #1.

All timber as described for removal in Schedule B located in the RMZ/WMZ thinning areas (beyond the blue special management tags up to the white timber sale boundary tags) within Unit #1.

The above described products on part(s) of Sections 23 and 24 all in Township 33 North, Range 5 East, W.M., containing 121 acres, more or less.

CERTIFICATION: This sale is certified under the Sustainable Forestry Initiative® program Standard (cert no: BV-SFIS-US09000572)

ESTIMATED SALE VOLUMES AND QUALITY:

Table with columns: Species, Avg DBH, Ring Count, Total MBF, and MBF by Grade (1P, 2P, 3P, SM, 1S, 2S, 3S, 4S, UT). Rows include Douglas fir, Hemlock, Red cedar, Red alder, Cottonwood, Silver fir, and Sale Total.

MINIMUM BID: \$1,051,000.00 BID METHOD: Sealed Bids

PERFORMANCE SECURITY: \$100,000.00 SALE TYPE: Lump Sum

EXPIRATION DATE: March 31, 2021 ALLOCATION: Export Restricted

BID DEPOSIT: \$105,100.00 or Bid Bond. Said deposit shall constitute an opening bid at the appraised price.

HARVEST METHOD: Cable or shovel or tracked skidder on sustained slopes 35% or less; also, a feller-buncher may be utilized on sustained slopes 35% or less. Falling and Yarding will not be permitted from November 1 to March 31 unless authorized in writing by the Contract Administrator (THIS PERTAINS TO GROUND-BASED EQUIPMENT ONLY) to reduce soil damage and erosion.



TIMBER NOTICE OF SALE

Falling and yarding in the RMZ/WMZ thinning areas shall not be permitted during the bark slippage season unless authorized in writing by the Contract Administrator. This season is estimated to run from April 1 to July 15, but may vary dependent on weather conditions. If permission is granted to operate during the bark slippage season the Purchaser shall be required to provide a plan outlining mitigation measures.

Additional restrictions apply, see Remarks section below.

ROADS:

20.45 stations of optional construction. 54.15 stations of optional reconstruction. 57.68 stations of existing road to be abandoned. 20.45 stations of road to be abandoned if built. 256.42 stations of required pre-haul maintenance. Installation of a 25-foot span, gravel decked, log stringer bridge over an existing culvert. Culvert removal upon road abandonment on fish bearing stream; removal work is to occur no sooner than July 1 and all work shall be completed prior to September 30.

Rock may be obtained from the following source(s) on State land at no charge to the Purchaser: Crane Creek Pit at station 16+68 of the CN-2006 Road.

Development of an existing rock source will involve drilling, shooting, and processing rock to generate riprap, and 3-inch-minus ballast.

An estimated total quantity of rock needed for this proposal: 8,510 cubic yards of riprap and 110 cubic yards of ballast rock. In addition, 8,500 cubic yards of 1 ½-inch-minus crushed surfacing rock from a stockpile.

Additional restrictions apply, see Remarks section below.

Road work and the hauling of rock will not be permitted from November 1 to March 31 unless authorized in writing by the Contract Administrator to reduce soil damage and siltation. The hauling of forest products will not be permitted from November 1 to March 31 unless authorized in writing by the Contract Administrator to reduce soil damage and siltation.

ACREAGE DETERMINATION

CRUISE METHOD: Acres determined by GPS traverse. Cruise was conducted via variable plot sample type. See Cruise Narrative for further details. Shapefiles of units are available upon request.

FEES: \$54,332.75 is due on day of sale. \$9.00 per MBF is due upon removal. These are in addition to the bid price.

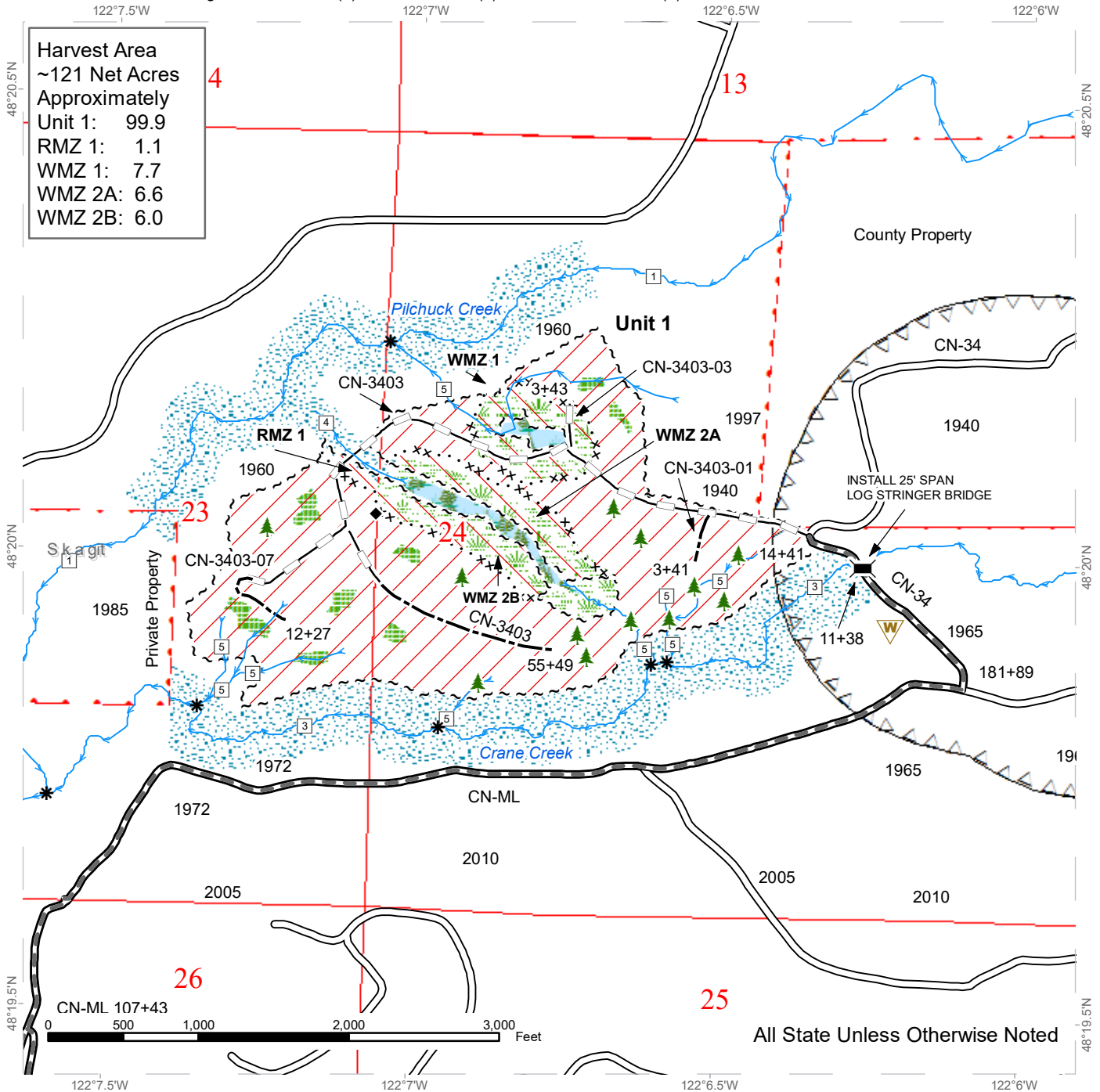
SPECIAL REMARKS:

1. Outer boundary of harvest area in RMZ/WMZ thinning areas is demarcated with blue special management tags within the sale area.
2. CEDAR SALAVGE: The DNR's standard conversion factor is 600 board feet per cord (cord = 128 cubic feet). Cedar salvage forest products removed on a cord basis will be converted to MBF for payment purposes. Approximately 1 cord/acre estimated in the variable retention harvest area. This volume equates to approximately 60 mbf of cedar which was added to the UT in the sale volume above.
3. This sale is anticipated to be harvested with ground-based equipment.
4. Road reconstruction is on previously abandoned grades.
5. Wildlife timing restrictions: no drilling, blasting, falling, bucking, yarding or operation of heavy equipment April 1 to August 31 from one hour before official sunrise to two hours after official sunrise and one before and after official sunset. Area for restriction is depicted on the timber sale map.

TIMBER SALE MAP

SALE NAME: CRANE KEY VRH RMZ
AGREEMENT #: 30-096339
TOWNSHIP(S): T33R5E, T33R6E
TRUST(S): Agricultural School (4), Normal School (8), State Forest Transfer (1)

REGION: Northwest Region
COUNTY(S): Skagit
ELEVATION RGE: 567-1240



Harvest Area
 ~121 Net Acres
 Approximately
 Unit 1: 99.9
 RMZ 1: 1.1
 WMZ 1: 7.7
 WMZ 2A: 6.6
 WMZ 2B: 6.0

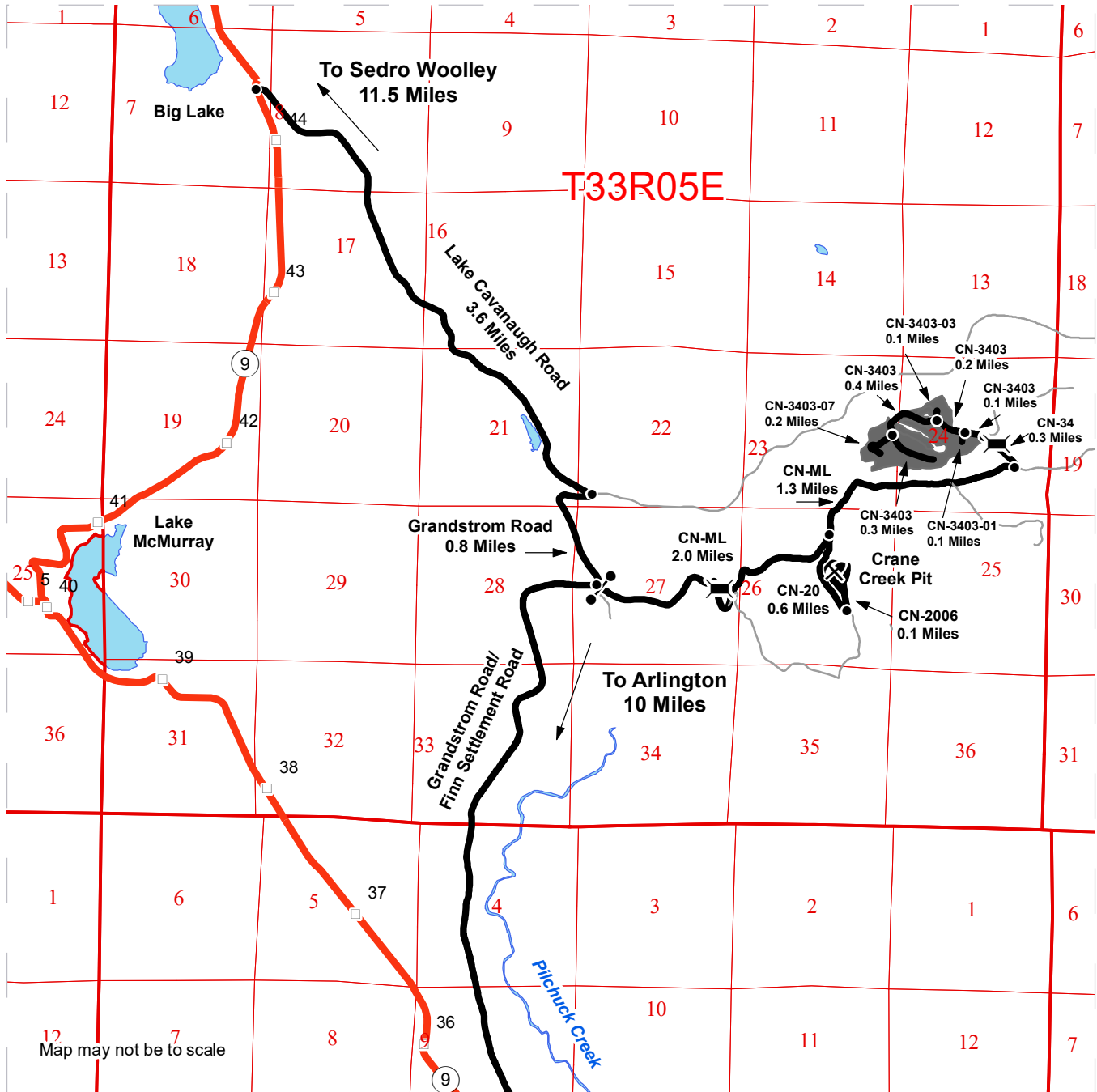
Variable Retention Harvest	Streams	Timing Restriction
Variable Density Thinning	Stream Type	Leave Tree Area
Sale Boundary Tags	Stream Type Break	Riparian Mgt Zone
Special Mgmt Area	Survey Monument	Forested Wetland
Existing Roads	Bridge	Wetland Mgt Zone
Required Pre-Haul Maintenance	Leave Tree Area <1/4-acre	DNR Managed Lands
Optional Construction	Waste Area	
Optional Reconstruction		



DRIVING MAP

SALE NAME: CRANE KEY VRH RMZ
AGREEMENT#: 30-096339
TOWNSHIP(S): T33R5E, T33R6E
TRUST(S): Agricultural School (4), Normal School (8), State Forest Transfer (1)

REGION: Northwest Region
COUNTY(S): Skagit
ELEVATION RGE: 567-1240



Map may not be to scale

- Timber Sale Unit
- Highway
- Haul Route
- Other Road
- Milepost Markers
- Bridge
- Distance Indicator
- Gate (F1-3)
- Rock Pit
- Open Water

DRIVING DIRECTIONS:

From the junction of Highway 20 and Highway 9 in Sedro-Woolley, travel 11.5 miles south on HWY 9 to Lake Cavanaugh Road. Turn left (east) and travel 3.6 miles on Lake Cavanaugh Road. Turn right (south) and travel 0.8 miles on Grandstrom Road. Turn left (east) and travel 3.5 miles on the Crane Creek Mainline (CN-ML). Turn left (north) on the CN-34 and travel 0.3 miles crossing Crane Creek to reach unit 1 and the CN-3403 road.

To reach the rock pit from the junction of Grandstrom road and the Crane Creek Mainline, continue up the Crane Creek Mainline 2.0 miles. Turn right (south) at CN-20 and travel .6 miles. Turn left on the CN-2006 for 0.1 mile. Take the first left for 0.1 mile to reach the Crane Creek rock pit.





TIMBER NOTICE OF SALE

SALE NAME: HIDDEN GEMS

AGREEMENT NO: 30-96336

AUCTION: August 29, 2018 starting at 10:00 a.m., COUNTY: Snohomish Northwest Region Office, Sedro Woolley, WA

SALE LOCATION: Sale located approximately 10 miles northeast of Monroe, WA.

PRODUCTS SOLD AND SALE AREA:

All timber (including trees marked with red paint) bounded by white timber sale boundary tags and property lines, except cedar salvage (cedar snags, preexisting dead and down cedar trees and cedar logs), trees marked with blue paint on the bole and root collar, and forest products tagged out by yellow leave tree area tags in Unit #3.

All timber (including trees marked with red paint) bounded by white timber sale boundary tags, property lines and adjacent young stands, except cedar salvage (cedar snags, preexisting dead and down cedar trees and cedar logs), trees marked with blue paint on the bole and root collar, and forest products tagged out by yellow leave tree area tags in Unit #4.

All timber (including trees marked with red paint) bounded by white timber sale boundary tags and adjacent young stands, except cedar salvage (cedar snags, preexisting dead and down cedar trees and cedar logs), trees marked with blue paint on the bole and root collar, and forest products tagged out by yellow leave tree area tags in Unit #7.

All timber bounded by orange right of way tags, except that title to the timber within the right of way tags is not conveyed to the Purchaser unless the road segment is actually constructed.

The above described products on part(s) of Sections 1 all in Township 28 North, Range 7 East, Sections 5 and 6 all in Township 28 North, Range 8 East, Sections 32 all in Township 29 North, Range 8 East, W.M., containing 46 acres, more or less.

CERTIFICATION: This sale is certified under the Sustainable Forestry Initiative® program Standard (cert no: BV-SFIS-US09000572)

ESTIMATED SALE VOLUMES AND QUALITY:

Table with columns: Species, Avg DBH, Ring Count, Total MBF, and MBF by Grade (1P, 2P, 3P, SM, 1S, 2S, 3S, 4S, UT). Rows include Douglas fir, Hemlock, Red cedar, Spruce, and Sale Total.

MINIMUM BID: \$1,174,000.00 BID METHOD: Sealed Bids

PERFORMANCE SECURITY: \$100,000.00 SALE TYPE: Lump Sum

EXPIRATION DATE: March 31, 2021 ALLOCATION: Export Restricted



TIMBER NOTICE OF SALE

- BID DEPOSIT:** \$117,400.00 or Bid Bond. Said deposit shall constitute an opening bid at the appraised price.
- HARVEST METHOD:** Cable or tethered equipment (See H-141 for restrictions); shovel on sustained slopes 35% or less; self-leveling equipment on sustained slopes 50% or less; also, a feller-buncher may be utilized on sustained slopes 35% or less. Falling and Yarding will not be permitted from November 1 to March 31 unless authorized in writing by the Contract Administrator (THIS PERTAINS TO GROUND-BASED EQUIPMENT ONLY) to reduce soil damage and erosion. Additional restrictions apply, see Remarks section below.
- ROADS:** 77.91 stations of optional construction. 77.91 stations of road to be abandoned if built. 3.00 stations of required pre-haul maintenance. Installation of 71 inch Span x 47 inch rise x 30 feet in length arch pipe.
- Rock may be obtained from the following source(s) on State land at no charge to the Purchaser: TL-01Hard Rock Pit at station 5+28 of the TL-ML Road.
- Development of an existing rock source will involve clearing, stripping, drilling, shooting, and processing rock to generate riprap and 3-inch-minus ballast.
- An estimated total quantity of rock needed for this proposal: 211 cubic yards of riprap and 5010 cubic yards of ballast rock.
- Additional restrictions apply, see Remarks section below.
- Road work and the hauling of rock will not be permitted from November 1 to March 31 unless authorized in writing by the Contract Administrator to reduce soil damage and siltation. The hauling of forest products will not be permitted from November 1 to March 31 unless authorized in writing by the Contract Administrator to reduce soil damage and siltation.
- ACREAGE DETERMINATION**
- CRUISE METHOD:** Acres determined by GPS traverse for units and length x width calculation for right-of-way. Cruise was conducted via variable plot sample type, as well as fixed plot for right-of-way. See Cruise Narrative for further details. Shapefiles of units are available upon request.
- FEES:** \$53,818.00 is due on day of sale. \$9.00 per MBF is due upon removal. These are in addition to the bid price.
- SPECIAL REMARKS:**
1. Trees marked with red paint (two red bands and a yellow "T") represent the last take tree along property line boundaries.
 2. HQ DF noted within the sale area. See cruise for further details (approximately 20 mbf of the above listed DF 2S is deemed high quality by the Department).
 3. Also, redcedar poles were noted within the sale area. No formal cruise was conducted for cedar poles.
 4. Wildlife timing restrictions are (for the area depicted on the timber sale map): no falling, bucking, yarding or operation of heavy equipment April 1 to August 31 from one hour before official sunrise to two hours after official sunrise and one before and after official sunset.
 5. Installation of structures on type 3 waters will not be permitted from September 30 through July 15.



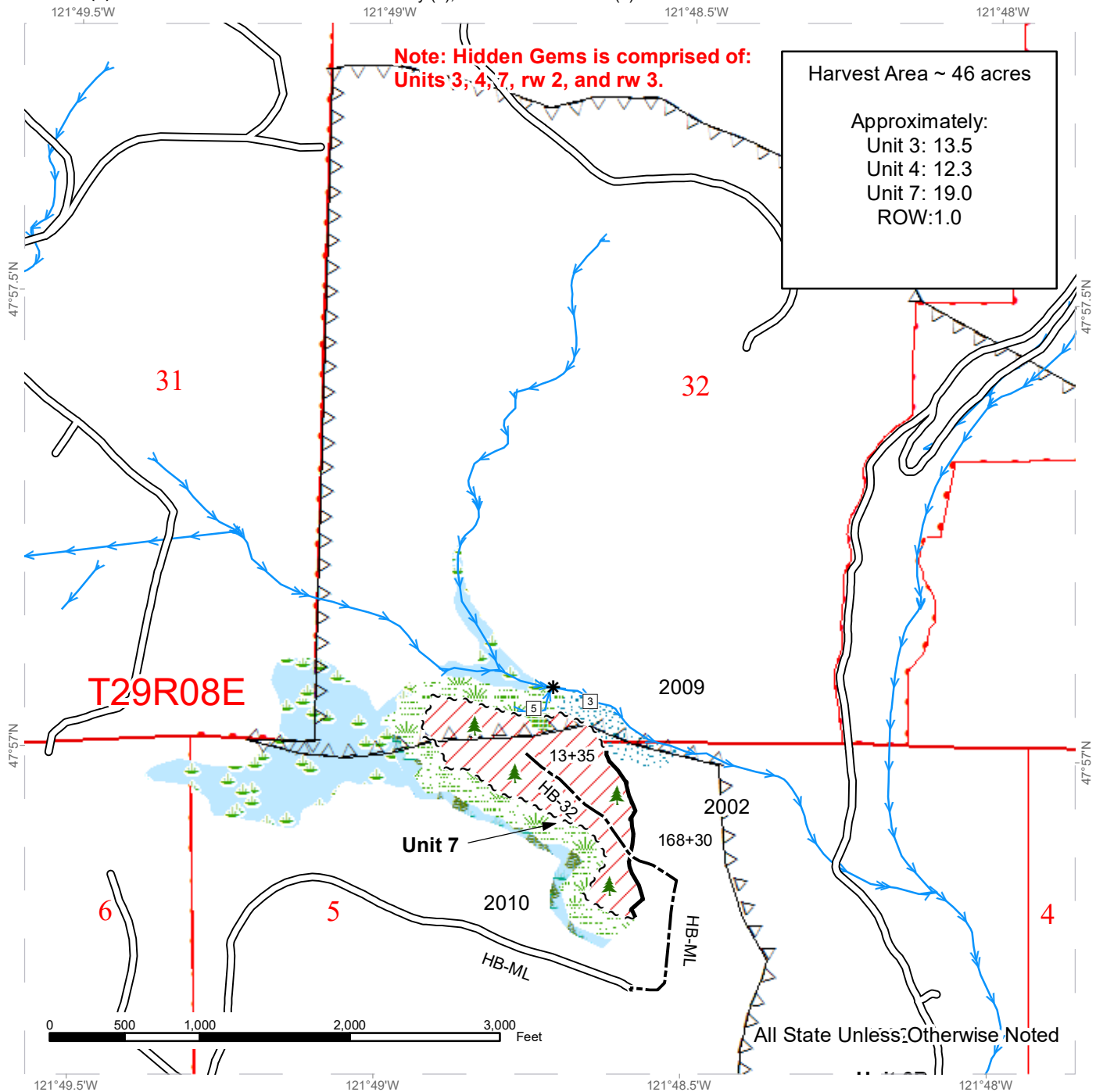
TIMBER NOTICE OF SALE

6. This sale is comprised of Units #3, #4, #7, ROW 2 and ROW 3.

TIMBER SALE MAP

SALE NAME: HIDDEN GEMS
AGREEMENT #: 30-096336
TOWNSHIP(S): T28R8E, T29R8E, T28R7E
TRUST(S): Common School and Indemnity (3), State Forest Transfer (1)

REGION: Northwest Region
COUNTY(S): Snohomish
ELEVATION RGE: 680-960



All State Unless Otherwise Noted

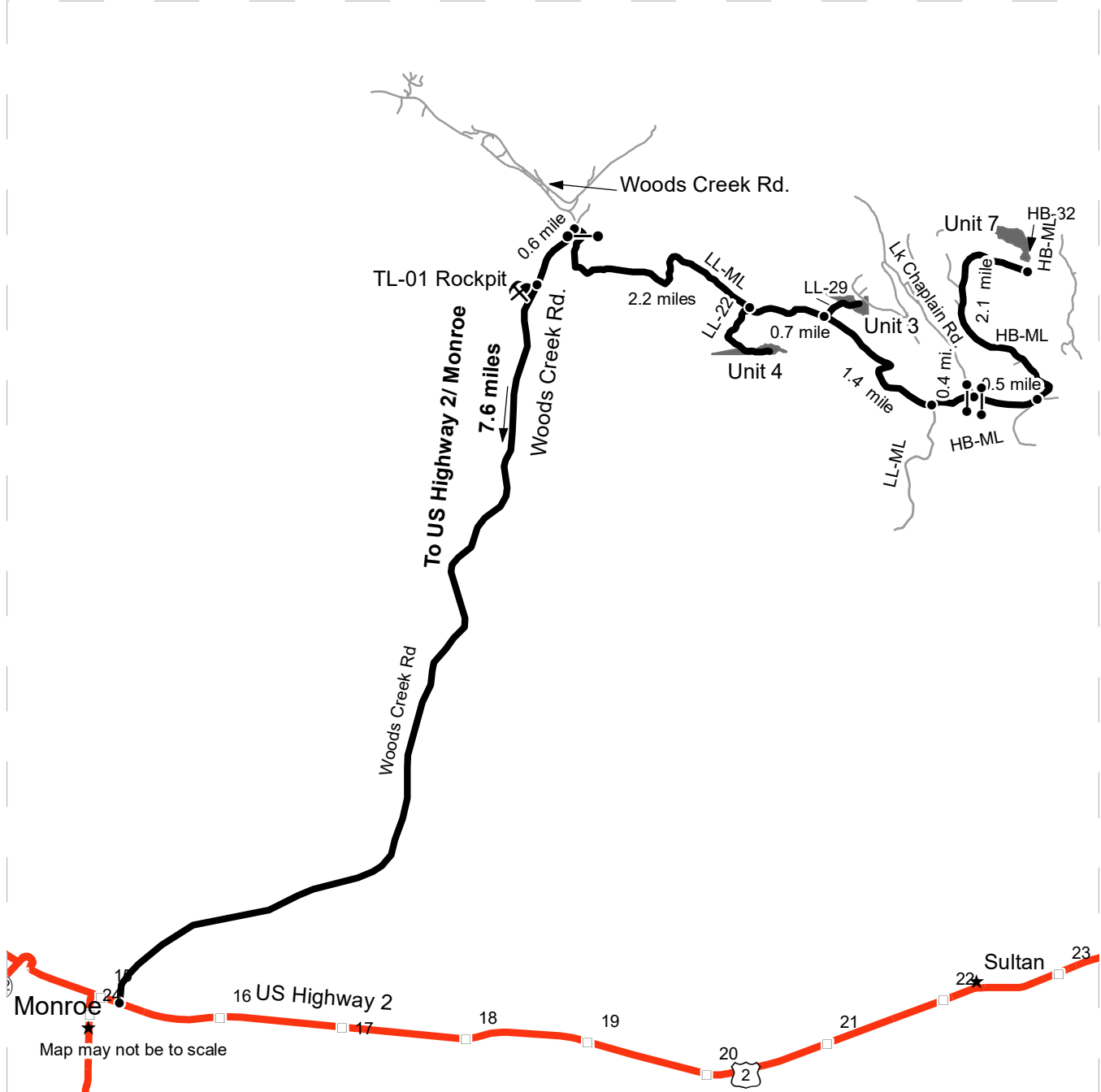
Sale Area	Sale Boundary Tags	Existing Roads	Stream Type
Wildlife Timing Restriction	Timber Type Change	Optional Construction	Stream Type Break
Leave Tree Area	Streams	Leave Tree Area <1/4-acre	
Riparian Mgt Zone			
Wetlands - Non-forested			
Forested Wetland			
Wetland Mgt Zone			



DRIVING MAP

SALE NAME: HIDDEN GEMS
AGREEMENT#: None
TOWNSHIP(S): T28R8E, T29R8E
TRUST(S): Common School and Indemnity (3), State Forest Transfer (1)

REGION: Northwest Region
COUNTY(S): Snohomish
ELEVATION RGE: 680-960



- Timber Sale Unit
- Haul Route
- Other Road
- Milepost Markers
- Distance Indicator
- Gate
- Rock Pit
- Town

DRIVING DIRECTIONS:

From Monroe on US Highway 2 turn left onto Woods Creek Road and follow for 7.6 miles to reach the TL-01 Rock Pit. Continue for 0.6 miles and turn right (east) onto the LL-ML gates.

Units 3 and 4: Drive 2.2 miles on the LL-ML to reach LL-22 (abandoned/optional construction) that leads to unit 4. Continue on the LL-ML for 0.7 miles to reach LL-29 (optional construction) for unit 3. Continue on the LL-ML for 1.4 miles towards the intersection of the LL-ML and HB-ML.

Unit 7: From the LL-ML and HB-ML intersection drive 0.4 miles towards the intersection of the HB-ML and Lake Chaplain Rd. F1 key needed for both gates. Drive straight onto the HB-ML and continue for 0.5 miles towards the intersection of the HB-ML and HB-09. Turn left onto the HB-ML and continue for 2.1 miles until you reach the end of the road. Abandoned/optional construction towards the left (continuation of the HB-ML/optional construction of HB-32) gives access to unit 7.





TIMBER NOTICE OF SALE

SALE NAME: SOUTH DIKE VRH RMZ

AGREEMENT NO: 30-96706

AUCTION: August 29, 2018 starting at 10:00 a.m., COUNTY: Whatcom Northwest Region Office, Sedro Woolley, WA

SALE LOCATION: Sale located approximately 3 miles northeast of Acme, WA.

PRODUCTS SOLD AND SALE AREA:

All timber bounded by white timber sale boundary tags, and the VZ-2115, VZ-2115-13, VZ-2110 roads, except cedar salvage (cedar snags, preexisting dead and down cedar trees and cedar logs), trees marked with blue paint on the bole and root collar, forest products tagged out by blue special management tags (RMZs), and forest products tagged out by yellow leave tree area tags in the Unit.

All timber as described for removal in Schedule B located in the RMZ thinning areas (beyond the blue special management tags up to the white timber sale boundary tags) within the Unit.

The above described products on part(s) of Sections 33 and 34 all in Township 38 North, Range 5 East, W.M., containing 99 acres, more or less.

CERTIFICATION: This sale is certified under the Sustainable Forestry Initiative® program Standard (cert no: BV-SFIS-US09000572)

ESTIMATED SALE VOLUMES AND QUALITY:

Table with columns: Species, Avg DBH, Ring Count, Total MBF, and MBF by Grade (1P, 2P, 3P, SM, 1S, 2S, 3S, 4S, UT). Rows include Douglas fir, Hemlock, Red alder, Red cedar, Maple, and Sale Total.

MINIMUM BID: \$802,000.00 BID METHOD: Sealed Bids

PERFORMANCE SECURITY: \$100,000.00 SALE TYPE: Lump Sum

EXPIRATION DATE: March 31, 2020 ALLOCATION: Export Restricted

BID DEPOSIT: \$80,200.00 or Bid Bond. Said deposit shall constitute an opening bid at the appraised price.

HARVEST METHOD: Cable; shovel on sustained slopes 35% or less; self-leveling harvester on sustained slopes 55% or less (See H-141 for restrictions); tethered equipment on sustained slopes 55% or less (See H-141 for restrictions); also, a feller-buncher may be utilized on sustained slopes 35% or less. Falling and Yarding will not be permitted from November 1 to March 31 unless authorized in writing by the Contract Administrator (THIS PERTAINS TO GROUND-BASED EQUIPMENT ONLY) to reduce soil damage and erosion.



TIMBER NOTICE OF SALE

ROADS: 305.71 stations of required pre-haul maintenance.

Rock may be obtained from the following source on State land at no charge to the Purchaser: McCoy Pit at station 22+50 of the MM-2217 Road.

Development of an existing rock source will involve drilling, shooting, and processing rock to generate riprap and 3-inch-minus ballast.

An estimated total quantity of rock needed for this proposal: 10 cubic yards of riprap and 3,940 cubic yards of ballast rock.

Road work and the hauling of rock will not be permitted from November 1 to March 31 unless authorized in writing by the Contract Administrator to reduce soil damage and siltation. The hauling of forest products will not be permitted from November 1 to March 31 unless authorized in writing by the Contract Administrator to reduce soil damage and siltation.

ACREAGE DETERMINATION

CRUISE METHOD: Acres determined by GPS traverse. Cruise was conducted via variable plot sample type in the VRH area and fixed plot in the RMZ thinning area. See Cruise Narrative for further details. Shapefiles of units are available upon request.

FEES: \$39,422.75 is due on day of sale. \$9.00 per MBF is due upon removal. These are in addition to the bid price.

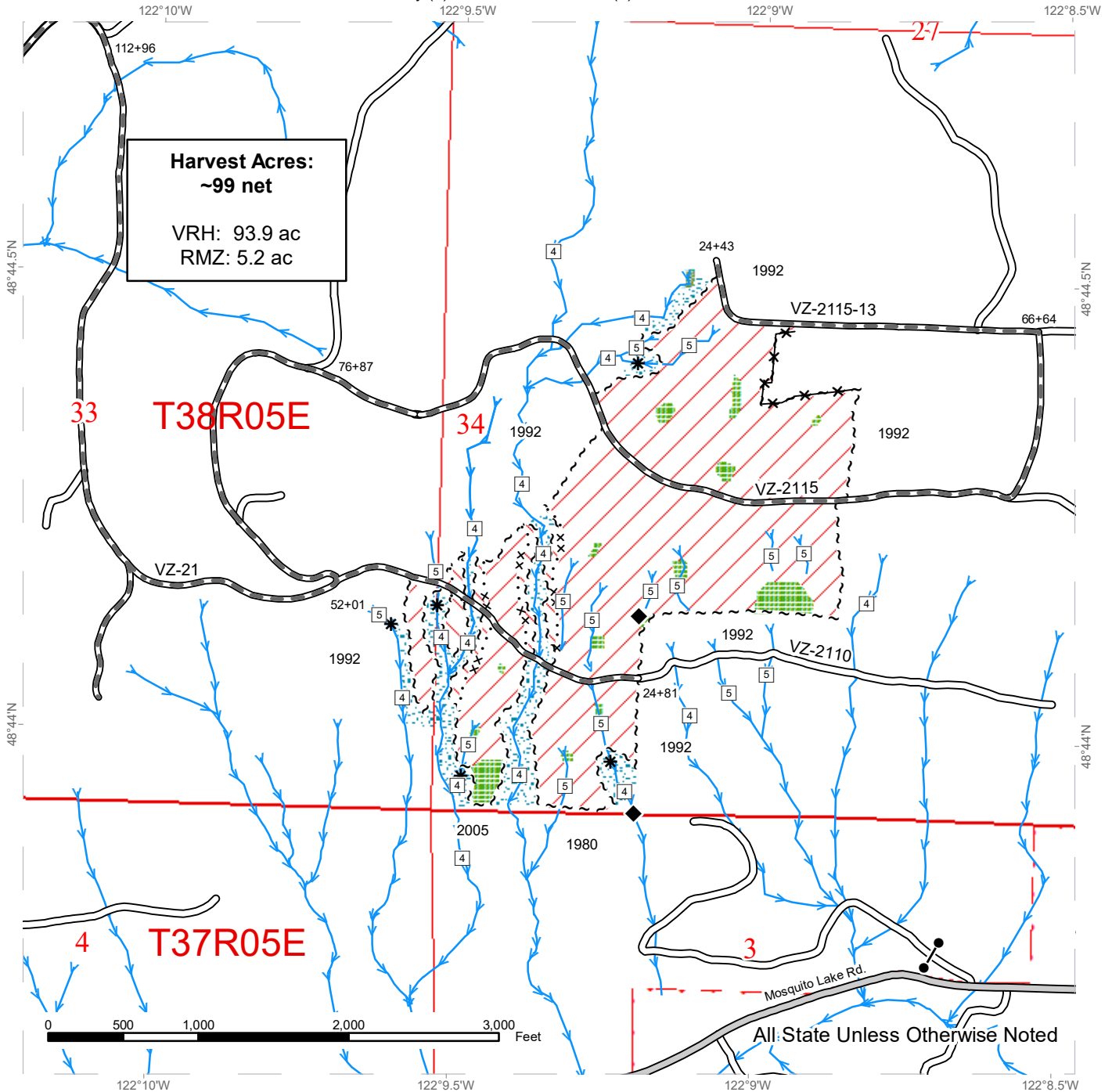
SPECIAL REMARKS:

1. Outer boundary of harvest area in RMZ thinning areas is demarcated with blue special management tags within the sale area.
2. Intermediate supports may be necessary cable yarding in a portion of the sale.
3. Prior written approval from the Contract Administrator must be obtained for areas as to where to utilize self-leveling equipment or tethered equipment prior to use. If soil disturbance is causing scour, as determined by the Contract Administrator, the equipment will no longer be authorized.

TIMBER SALE MAP

SALE NAME: SOUTH DIKE VRH RMZ
AGREEMENT #: 30-096706
TOWNSHIP(S): T37R5E, T38R5E
TRUST(S): Common School and Indemnity (3), State Forest Transfer (1)

REGION: Northwest Region
COUNTY(S): Whatcom
ELEVATION RGE: 523-1927



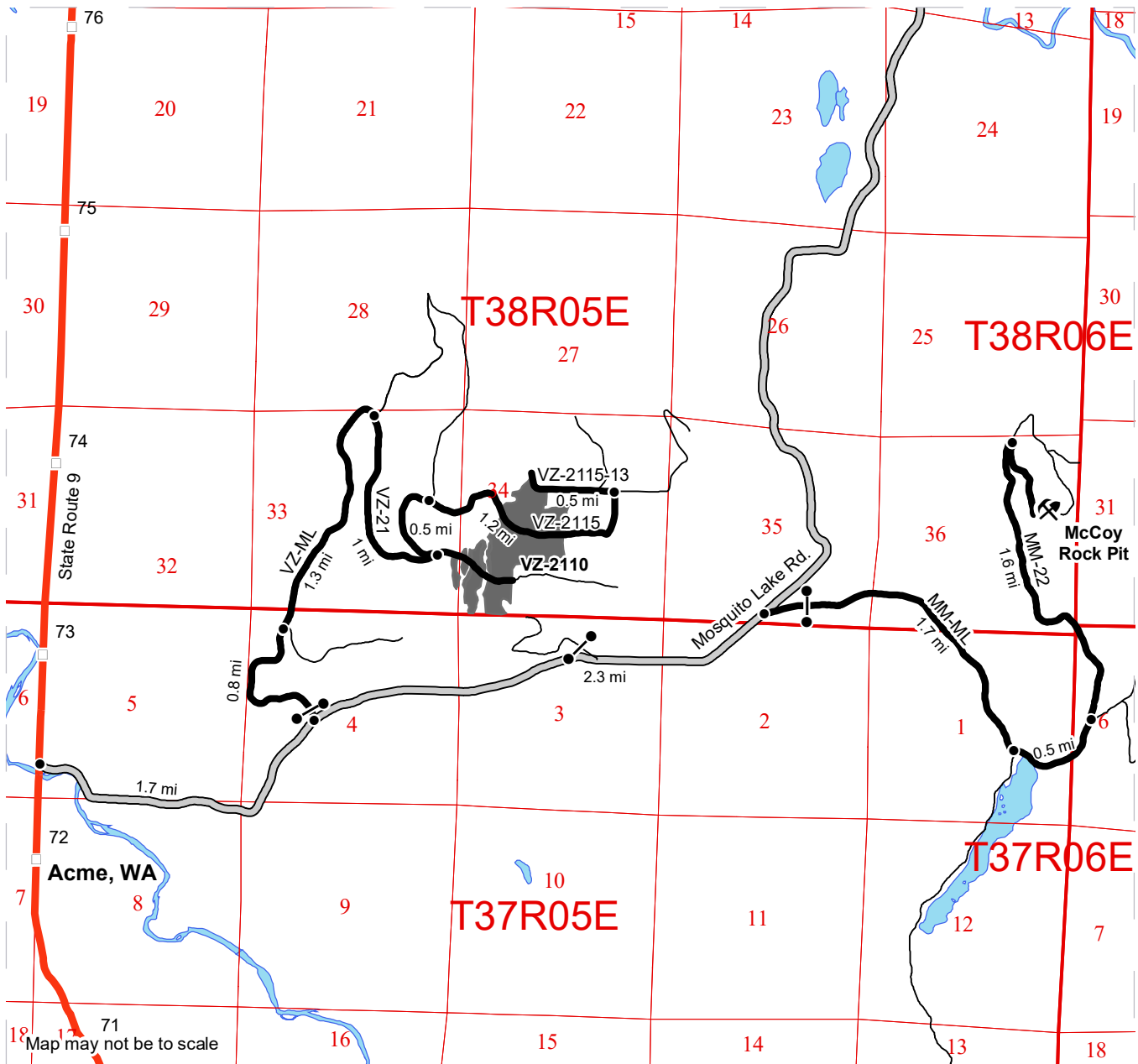
	Variable Retention Harvest		Sale Boundary Tags		Streams
	RMZ Thinning		Special Mgmt Area		Stream Type
	Leave Tree Area		Fence		Stream Type Break
	No-cut Riparian Mgt Zone		County Road		
	Forested Wetland		Existing Roads		
	DNR Managed Lands		Required Pre-Haul Maintenance		



DRIVING MAP

SALE NAME: SOUTH DIKE VRH RMZ
AGREEMENT#: 30-096706
TOWNSHIP(S): T37R5E, T38R5E
TRUST(S): Common School and Indemnity (3), State Forest Transfer (1)

REGION: Northwest Region
COUNTY(S): Whatcom
ELEVATION RGE: 523-1927



- Distance Indicator
- Gate (F1)
- ⚡ Rock Pit
- Haul Route
- Other Road
- County Road
- Timber Sale Unit

DRIVING DIRECTIONS:

Harvest Unit:

From the intersection of Mosquito Lake Rd. and State Route 9, head east on Mosquito Lake Rd. for 1.7 miles until reaching the VZ-ML on the left. Proceed up the VZ-ML for 2.1 miles and take the right fork to turn onto the VZ-21. Continue on the VZ-21 for 1 mile.

To access the lower portion of the harvest, continue straight onto the VZ-2110. Continue for several hundred feet before entering the unit. To access the upper portion of the harvest, continue around the switch back and proceed for 0.5 miles. Keep right at the fork and continue for 0.5 miles before entering the unit.

McCoy Rock Pit:

From the intersection of the VZ-ML and Mosquito Lake Rd., continue east on Mosquito Lake Rd. for 2.3 miles and turn right onto the MM-ML. Continue for 2.2 miles and turn left onto the MM-22. Continue for 1.6 miles and turn right. Continue for another 0.5 miles before reaching the McCoy Rock Pit.



TIMBER NOTICE OF SALE

Harvest Cost = \$0.00 per MBF for sorts 2, 3 and 4, \$20.00 per Ton for sort 5 and \$25.00 per Ton for sort 1.

Hauling Services Payment Rate per Ton
= (Base Rate + Mileage Rate) x (Contractor's hauling bid factor)

Base Rate = \$2.35 per ton

Mileage Rate = ((\$0.16 x C miles) + (\$0.11 x A miles)) x Fuel Index Factor

ARRF does not apply.

Note: To calculate ARRF rates per ton use the tons\mbf conversion factor in the table above.

CONFIRMATION: Each sort is subject to confirmation following auction. Sorts will not be confirmed until at least 10 days after auction. Final contract award is contingent upon the State's haul cost analysis. Actual haul route may vary and is subject to change at the State's discretion.

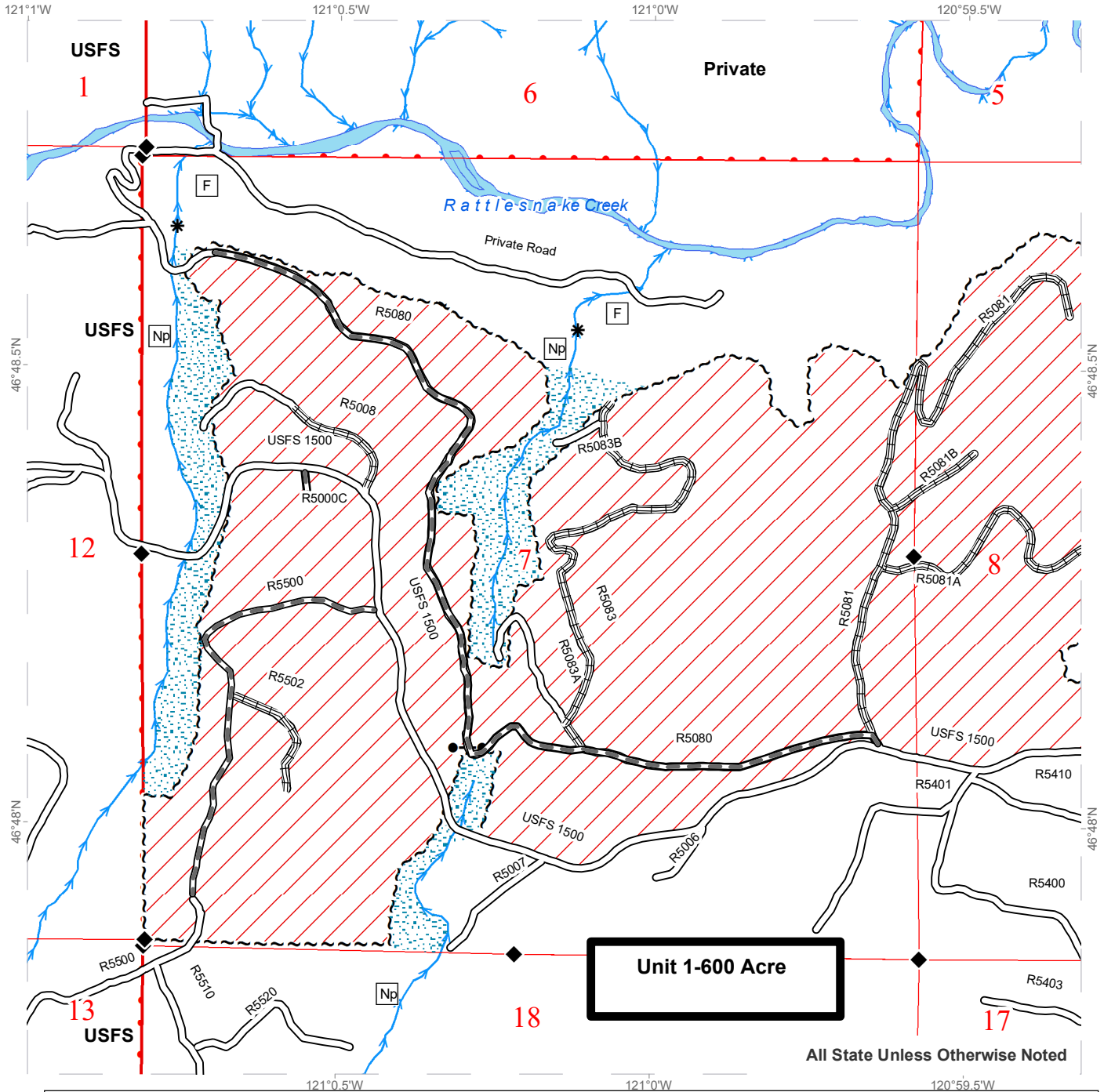
SPECIAL REMARKS: The successful Purchaser(s) will be required to purchase logs from the sale area upon delivery to their location specified in the bid submitted. Logs will be delivered to the Purchaser's delivery location by the State's contract harvester. Purchaser is responsible for weighing and scaling costs. All tonnage loads will be weighed and all mbf loads will be scaled at State approved locations. The State reserves the right to determine where logs are authorized to be scaled and weighed.

For more information regarding this log sort sale visit our web site:
<http://www.dnr.wa.gov/programs-and-services/product-sales-and-leasing/timber-sales/timber-auction-packets>. If you have questions call Chris Brandon at the Southeast Region Office at (509)899-4825 or Steve Teitzel at the Product Sales and Leasing Division Office in Olympia at (360)902-1741.

TIMBER SALE MAP

SALE NAME: RATTLESNAKE PUNCH SORTS
AGREEMENT #: 30-096785
TOWNSHIP(S): T15R15E
TRUST(S): Common School and Indemnity (3), Normal School (8)

REGION: Southeast Region
COUNTY(S): Yakima
ELEVATION RGE: 2213-3218



All State Unless Otherwise Noted

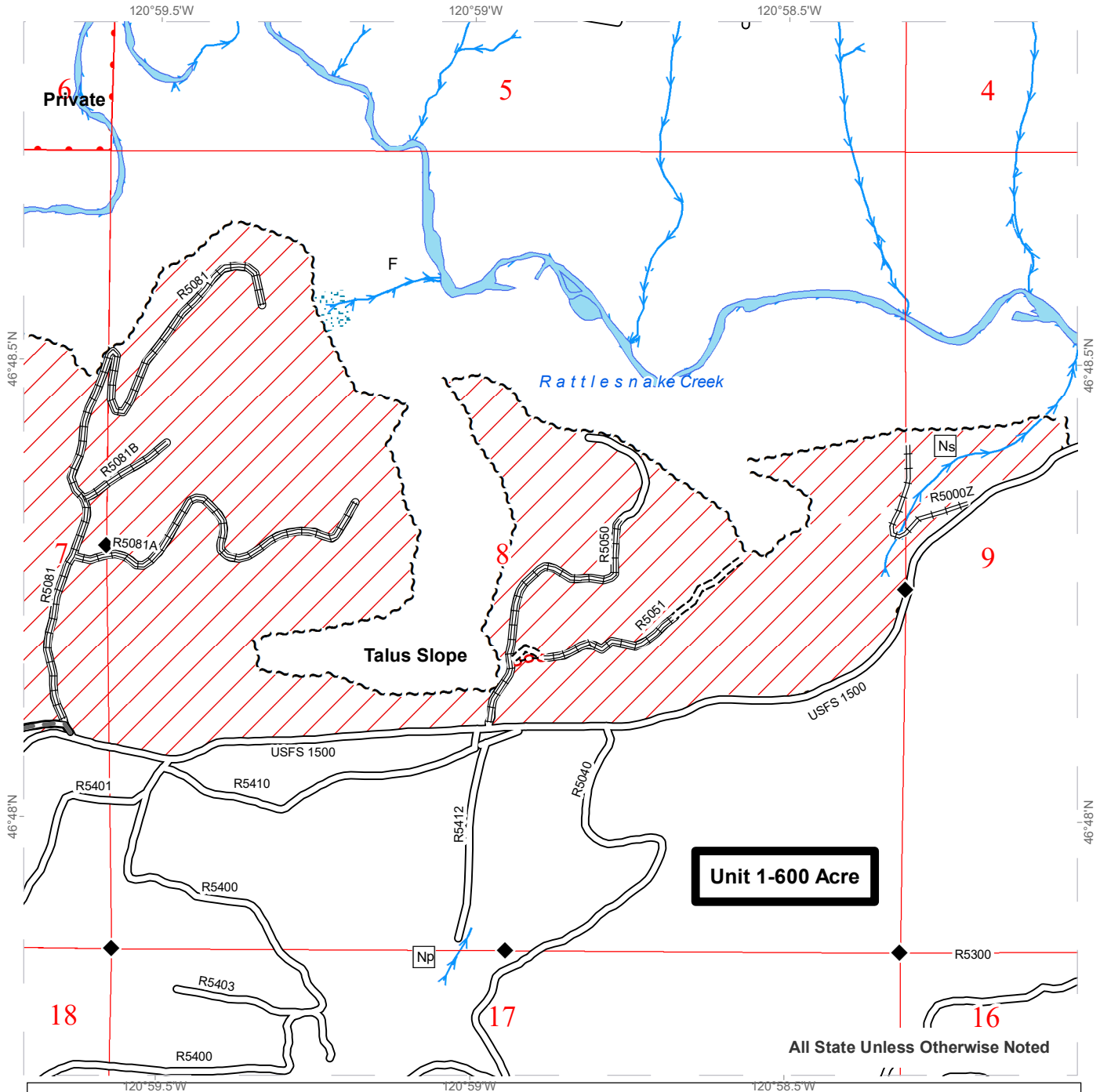
Legend					
	Sale Area		Monument Corners		Existing Roads
	Sale Boundary Tags		Streams		Required Reconstruction
	DNR Managed Lands		RMZ		Required Pre-Haul Maintenance
	Public Land Survey Townships		Gate		Required Construction
	Public Land Survey Sections		Stream Type Break		Stream Type



TIMBER SALE MAP

SALE NAME: RATTLESNAKE PUNCH SORTS
AGREEMENT #: 30-096785
TOWNSHIP(S): T15R15E
TRUST(S): Common School and Indemnity (3), Normal School (8)

REGION: Southeast Region
COUNTY(S): Yakima
ELEVATION RGE: 2213-3218



Legend

- | | | |
|------------------------------|-------------------|-------------------------------|
| Sale Area | Monument Corners | Existing Roads |
| Sale Boundary Tags | Streams | Required Reconstruction |
| DNR Managed Lands | RMZ | Required Pre-Haul Maintenance |
| Public Land Survey Townships | Gate | Required Construction |
| Public Land Survey Sections | Stream Type Break | Stream Type |

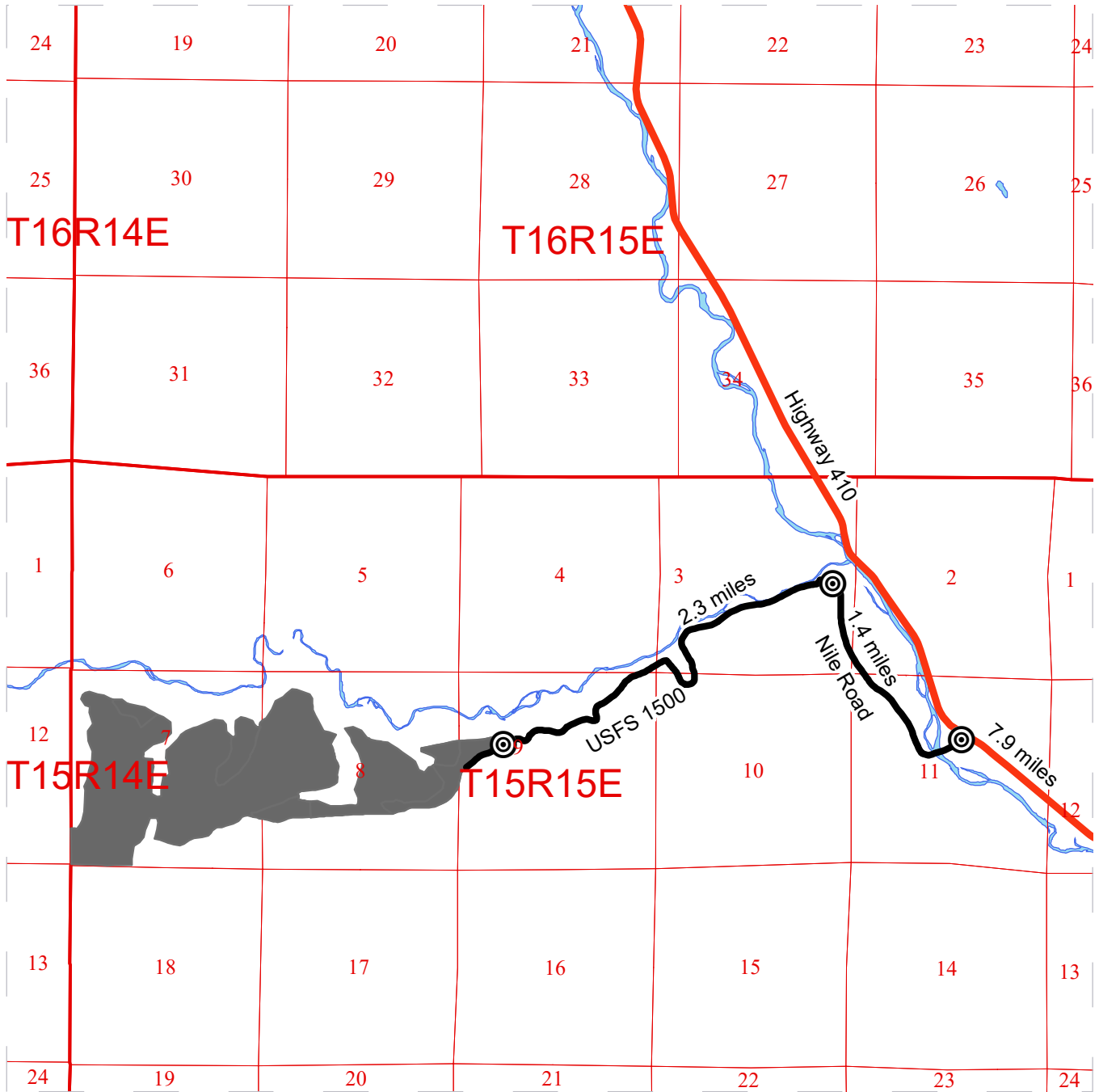
0 500 1,000 2,000 3,000 Feet



DRIVING MAP

SALE NAME: RATTLESNAKE PUNCH
AGREEMENT#: 30-096785
TOWNSHIP(S): T15R15E
TRUST(S): Common School and Indemnity (3), Normal School (8)

REGION: Southeast Region
COUNTY(S): Yakima
ELEVATION RGE: 2213-3218



Legend

- Timber Sale Unit
- Highway
- Haul Route
- Public Land Survey Townships
- Public Land Survey Sections
- Open Water
- Distance Indicator

DRIVING DIRECTIONS:

From Naches, follow Highway 12 west for 4.4 miles to junction with Highway 410. Follow Highway 410 for 7.9 miles to Nile Road. Turn left onto Nile Road and follow for 1.4 miles to USFS 1500 (Bethel Ridge) Road. Follow USFS 1500 for 2.3 miles to sale boundary.



**State of Washington
Department of Natural Resources**

SEALED BID FORM

Sale Name _____ Agreement Number _____

_____ hereby submits the following bid for timber.
(Print full, legal company name)

(Street address, City, State, Zip Code)

(Phone Number)

Lump Sum Bid (Not Including Fees) \$ _____ **For Total Sale**

Weight Scale Sale Bid (Not Including Fees) \$ _____ / **Ton**

Scribner Scale Sale Bid (Not Including Fees) \$ _____ / **MBF For Biddable Species**

BID DEPOSIT

Bid Deposit Amount: \$ _____

Bid Deposit Type:

- Cash, certified check, cashiers check, or money order
 Per Sale Bid Bond
 Statewide Bid Bond, Number _____

Within 30 days of confirmation date the successful bidder agrees to furnish Performance Security acceptable to the State in the amount specified on the Notice of Sale. Performance Security must guarantee performance of all provisions of the contract and payment of any damages caused by operations under the contract or resulting from the successful bidders noncompliance with any rule or law.

Bidder's Warranty and Bid Signature

By signing and submitting this bid as an offer to purchase forest products from the State, the Bidder hereby warrants to the State that they have had an opportunity to fully inspect the sale area and the forest products being sold. Bidder further warrants to the State that they enter this bid based upon their own judgments of the value of the forest products, formed after their own examination and inspection of both the timber sale area and the forest products being sold. Bidder also warrants to the State that they enter this bid without any reliance upon the volume estimates, acreage, appraisals, pre-bid documentation, or any other representation by the Washington State Department of Natural Resources.

_____ Date _____
(Signature of Authorized Representative submitting this bid)

(Print name and title of Authorized Representative submitting this bid)

Note: all sales are subject to confirmation by the Commissioner of Public Lands (Refer 79.15.120)

Instructions For Completing Sealed Bid Form

All bids submitted for the purchase of forest products being sold by the Washington State Department of Natural Resources must have an original signature on behalf of the person or entity submitting the bid, and must be on the form provided in this booklet or a photocopy thereof. The DNR will not accept bids that are not signed, and will not accept bids that are not on the current, approved bid form. All appropriate blanks on bid form must be completed including the bid bond number if the bidder is relying upon a bid bond for bid deposit.

For more specific information, contact the appropriate region office.

In-Person Bids

- A. Sealed bids must be in auction box before 10:00 a.m. on the day of auction at the location specified in the Timber Notice of Sale.
 - B. Sealed bids must be submitted in an envelope with the name of the sale, the bidder's name and the contract number clearly written on the outside of the envelope. The full legal name and business address of the bidder must be inserted where indicated on the form, and must be on the bid bond and timber sale contract. The bid form must be signed by an authorized representative. When a bidder has more than one person authorized to bid, documentation of those persons with signature authority for bidding must accompany the bid or be on file at the region office. Sealed bid envelopes are available at all region offices. One bid per envelope.
 - C. Sealed bid envelopes **must** contain a completed bid form and a bid deposit.
 - D. Sealed bid envelopes **may** contain a check for the Initial Deposit amount and a check for fees.
-

Mailed Bids

- A. Bids that are mailed are required to have printed on the outside: "DO NOT OPEN UNTIL SALE DATE. SEALED BID ENCLOSED". The sealed bid envelope(s) will be enclosed inside the mailed-in envelope. Mailed bids must be submitted in an envelope with the name of the sale, the bidder's name and the agreement number clearly written on the outside of the envelope. The full legal name and business address of the bidder must be inserted where indicated on the form, and must be the same on the bid bond and timber sale contract. The Sealed Bid Form must be signed by an authorized representative. When a bidder has more than one person authorized to bid, documentation of those persons with signature authority for bidding must accompany the bid or be on file at the region office. Mail-in envelopes are available at all region offices. One bid per mailed-in envelope.
 - B. Bids that are mailed will be accepted up to 4:30 p.m. the last business day before the auction by the region office in which the sale is located. Bidders assume the risk for the method of delivery. The DNR assumes no responsibility for any delays caused by any delivery service.
 - C. Sealed bid envelopes **must** contain a completed bid form and a bid deposit.
 - D. Sealed bid envelopes **may** contain a check for the Initial Deposit amount and a check for fees.
-

Initial Deposit:

Lump Sum Sales - Initial Deposit must equal 10% of the total bid submitted.
(25% if the bidder is a defaulter as defined under WAC 332-140-300)

Weight Scale Sales - Initial Deposit must equal 10% of the bid per ton multiplied by the total sale estimated tonnage. (25% if the bidder is a defaulter as defined under WAC 332-140-300)

Scribner MBF Scale Sales - Initial Deposit must equal 10% of the bid per MBF multiplied by the total sale MBF. (25% if the bidder is a defaulter as defined under WAC 332-140-300)

**State of Washington
Department of Natural resources**

STATEWIDE BID BOND

Bond Number _____

_____ of _____,
(Principal's Name) (City, State)

hereinafter called PRINCIPAL, and _____ hereinafter called
SURETY,

a corporation organized under the laws of the State of _____, and authorized to transact surety business in the State of Washington, as SURETY, are held and firmly bound jointly and severally to the State of Washington, Department of Natural Resources, hereinafter called the STATE, in the sum of \$150,000.00 Dollars, lawful money of the United States of America. The PRINCIPAL binds itself, its heirs, executors, administrators, successors, and assigns, and the SURETY binds itself, its successors, and assigns, all jointly and severally.

This bond shall be governed by the laws of the State of Washington. In the event of a lawsuit involving this bond, a venue shall be proper only in Thurston County Superior Court.

Signed, sealed and dated this _____ day of _____, _____ .
(month) (year)

This statewide bid bond may be used for bidding between the following dates:

Starting:

Ending:

It Is Hereby Understood and Agreed:

If PRINCIPAL is an apparent high bidder, PRINCIPAL shall before 4:30 p.m ., on day of sale, pay to the STATE the amount of the initial deposit in the form of a certified check, cashier's check, bank draft, cash or money order, then this agreement shall be void for the sale on which the payment is made; otherwise, it will remain in force.

SURETY will make payment to the STATE within ten days after demand by the STATE if the PRINCIPAL shall fail to make timely payment as described above.

The SURETY may cancel this bond by sending a written notice to the STATE, not less than forty-five days before a cancellation date; liability shall terminate as to acts or omissions of the PRINCIPAL that occur after the cancellation date.

The PRINCIPAL and the SURETY executed this bond on the date first mentioned.

Principal: (Above named)

Signature: _____

Name: _____

Title: _____

Address: _____

City: _____
State & Zip Code

Surety: (Above named)

Signature: _____

Name: _____

Title: _____

Address: _____

City: _____
State & Zip Code

Surety: (Local Office of Authorized agent)

Signature: _____

Name: _____

Title: _____

Address: _____

City: _____
State & Zip Code

Notary or Company Seal in Space Above

Instructions for Completing Timber Sale Statewide Bid Bond

- A. This form is authorized for use as bid guaranty to qualify for bidding on Washington State Department of Natural Resources timber sales.
- B. The Statewide Bid Bond may be used as bid guaranty on more than one timber sale.
- C. The full legal name and business address of the PRINCIPAL must be inserted where indicated and must be the same as will appear on the bidding record and timber sale contract. The bond must be signed by an authorized person. Additionally, the name must be typed or printed below the signature and title must be shown.
- D. The full legal name and business address of the SURETY must be inserted where indicated. The bond must be signed by an authorized person. Additionally, the name must be typed or printed below the signature and the title must be shown.
- E. If the SURETY does not have a Washington State office or resident agent, but is authorized to transact surety business in the State of Washington as SURETY, it may leave this signature block blank.
- F. This form must be received by the Department of Natural Resources, Product Sales & Leasing Division, PO BOX 47016, Olympia, Washington, 98504-7016, ten days in advance of the auction.
- G. **The State reserves the right to reject *incomplete or incorrect* bid bond forms, making such forms unacceptable as bid guaranty.**

**State of Washington
Department of Natural Resources**

Timber Sale Per Sale Bid Bond

Bond Number _____

_____ of _____, hereinafter called PRINCIPAL, and _____, hereinafter called SURETY, a corporation organized under the laws of the State of _____ and authorized to transact surety business in the State of Washington, as SURETY, are held and firmly bound jointly and severally to the State of Washington, Department of Natural Resources, hereinafter called the STATE, in the sum of \$ _____ Dollars, lawful money of the United States of America. The PRINCIPAL binds itself, its heirs, executors, administrators, successors, and assigns, and the SURETY binds itself, its successors, and assigns, all jointly and severally.

This bond shall be governed by the laws of the State of Washington. In the event of a lawsuit involving this bond, venue shall be proper only in Thurston County Superior Court.

Signed, sealed, and dated this _____ day of _____, 20 _____.

BID IDENTIFICATION:

SALES NAME(S)	REQUIRED DEPOSIT	AGREEMENT NUMBER(S)

DATE OF BID: _____

It Is Hereby Understood and Agreed:

If PRINCIPAL is the high bidder on the sale(s) identified above and, within ten (10) days of the day of sale, transmits cash, certified check, cashier's check, bank draft or money order, payable to the STATE, in the amount of the bid guaranty required by the terms of the Notice of Sale, *then* this obligation shall be void; *otherwise*, it shall remain in force.

SURETY will make payment to the STATE within ten (10) days after demand by the STATE whenever the PRINCIPAL shall fail to make timely payment as described above.

IN WITNESS WHEREOF: the PRINCIPAL and the SURETY have caused this bond to be executed on the date first mentioned.

SECOND OFFICER:

Signature: _____

Name: _____

Title: _____

PRINCIPAL: (Above Named)

Signature: _____

Name: _____

Title: _____

SURETY: (Local Office of Authorized Agent)

Signature: _____

Name: _____

Title: _____

Address: _____

City: _____

State & Zip: _____

SURETY: (Above Named)

Signature: _____

Name: _____

Title: _____

Address: _____

City: _____

State & Zip _____

NOTARY OR COMPANY SEAL IN THE SPACE ABOVE

Instructions for Completing Timber Sale Per Sale(s) Bid Bond

- A. This form is authorized for use as bid guaranty to qualify for bidding on Washington State Department of Natural Resources timber sales.
- B. The Timber Sale Per Sale Bid Bond may be used as bid guaranty on more than one timber sale auction held the same date at the same location.
- C. The full legal name and business address of the PRINCIPAL must be the same as will appear on the bidding record and timber sale contract. The bond must be signed by an authorized person, the name typed or printed, and title shown. If PRINCIPAL is a corporation, a second officer must sign in the space to the left of the signature of the officer executing for the PRINCIPAL.
- D. The full legal name and business address of the SURETY must be inserted where indicated. The bond must be signed by an authorized person. Additionally, the name must be typed or printed below the signature and the title must be shown. If this person is not an officer of the corporation, evidence of authority must be submitted.
- E. If the SURETY does not have a Washington State office or resident agent, but is authorized to transact surety business in the State of Washington as Surety, it may leave the local office signature block blank.
- F. The date of the bid bond must not be later than the auction date.
- G. **The State reserves the right to reject incomplete or *incorrect* bid bond forms, making such forms unacceptable as guaranty.**

STATE OF WASHINGTON
DEPARTMENT OF NATURAL RESOURCES

LOG SORT SEALED BID FORM

Sale Name _____ Agreement Number _____ Date _____

_____ hereby submits the following bid for delivered logs.
(Print Company Name)

_____ Telephone Number _____
(Print Name Authorized Company Representative) (Contact for bid result notification)

(Street Address)

(City, State and Zip)

Agreement Number	Sort Number	Delivered Logs Bid Amount (fill in one only)	
		\$ / MBF	\$ / ton

Bid Deposit Amount \$ _____

Bid Deposit Type: Cash, Certified Check, Cashiers Check, or Money Order
 Per Sale Bid Bond
 Statewide Bid Bond, Number _____

The successful bidder agrees to furnish payment security acceptable to the State in the amount as described in clause P-041 of the Purchaser's contract prior to log delivery and at a date to be determined by the State.

Bidder's Warranty and Bid Signature

By signing and submitting this bid as offer to purchase forest products from the State, the Bidder hereby warrants to the State that they have had an opportunity to fully inspect the sale area and the forest products being sold. Bidder further warrants to the State that they enter this bid based solely upon their own judgment of the value of the forest products, formed after their own examination and inspection of both the timber sale area and the forest products being sold. Bidder also warrants to the State that they enter this bid without any reliance upon the volume estimates, acreage estimates, appraisals, pre-bid documentation, or any other representation by the State Department of Natural Resources.

(Signature of Authorized Representative submitting this bid)

(Date of Signature)

(Print name and title of Authorized Representative submitting this bid)

NOTES: A separate bid form is required for each log sort bid and must be delivered in a separate envelope. Photocopies of this bid form may be used. Each photocopy must have original signatures. Final contract award is contingent upon the State's haul cost analysis. Actual haul route may vary and is subject to change at the State's discretion. All sales are subject to confirmation by the Commissioner of Public Lands as per RCW 79.15.100.

LOG SORT SEALED BID SUPPLEMENTAL INFORMATION FORM

(Print Company Name)

(Sale Name)

(Agreement Number)

(Sort Number)

(email: optional for DNR production report distribution)

Log Manufacturing Specifications:

Sawlog and Peeler sorts: Enter at least one preferred log length including trim for each log length range below.

Pole sorts (Distribution): Enter three or more lengths. Attach preferred manufacturing information.

Pole sorts (Transmission): Enter six or more lengths. Attach preferred manufacturing information.

Tonnage sorts: See bid form instructions for required log lengths. Enter additional custom lengths as desired.

Log Length Ranges	Bidder's Preferred Log Lengths
16 ft. through 20 ft.	
22 ft. through 30 ft.	
32 ft. through 40 ft.	
Distribution Poles – 35 ft. through 55 ft.	
Transmission Poles – 60 ft.+	

Log Delivery Information:

1) Designate the point of delivery and address (must be a street address)

(Location Name)

(Street Address)

(City, State and Zip)

2) Designate the state approved Scaling and Weighing facilities closest to the point of delivery as needed. Scaling

Location Information

(Scaling Location Name)

(Third Party Scaling Organization)

(Scaling Location Street Address)

(Scaling Location City, State and Zip)

Weighing Location Information

(Weighing Location Name)

(Weighing Location Owner)

(Weighing Location Street Address)

(Weighing Location City, State and Zip)

Final contract award is contingent upon the State's haul cost analysis. Actual haul route may vary and is subject to change at the State's discretion. Additional terms or conditions requested by the bidder on or attached to the Log Sort Sealed Bid or Supplemental Information Forms are informational only and non-binding.

Instructions for Completing the Log Sort Sealed Bid and Supplemental Information Forms.

All bids submitted for the purchase of forest products being sold by the Washington State Department of Natural Resources must have an original signature on behalf of the person or entity submitting the bid, and must be on the form(s) provided in this booklet or a photocopy thereof. The DNR will not accept bids that are not signed, and will not accept bids that are not on the current, approved bid form. All appropriate blanks including Agreement Number, Sort Number, Bid amount (per mbf or ton as appropriate for the sort), Bid deposit amount and type. Signatures and date on bid form must be completed including the bid bond number if bidder is relying upon a bid bond for bid deposit.

Bids shall not be accepted if a completed ‘**Log Sort Sealed Bid Supplemental Information Form**’ is not included with the approved ‘**Log Sort Sealed Bid Form**’.

Required log lengths for tonnage sorts: Preferred log lengths for tonnage sawlog sorts shall include the following plus any additional lengths identified on the Bid Supplemental Information form:

Species Type	Preferred Lengths
Conifer Sorts	16’, 20’, 24’, 26’, 32’, 40’
Hardwood Sorts	18’, 20’, 26’, 28’, 30’, 36’, 38’, 40’

For more specific information, contact the appropriate region office.

In-Person Bids

- A. Sealed bids must be in auction box or auction envelope before 10:00 a.m. on the day of sale at the location specified in the notice of sale.
- B. Sealed bids must be submitted in an envelope with the name of the sale, the bidder’s name and the contract agreement number clearly written on the outside of the envelope. The full legal name and business address of the bidder must be inserted where indicated on the form, and must be the same as the name on the bid bond and timber sale contract. The bid form must be signed by an authorized person. When a bidder has more than one person authorized to bid, then documentation of those persons with signature authority for bidding must accompany the bid or be on file at the region office. Sealed bid envelopes are available at all region offices. One bid per envelope.
- C. Sealed bid envelopes must contain the following:
 1. A completed ‘**Log Sort Sealed Bid Form**’;
 2. A completed ‘**Supplemental Information Form**’ and;
 3. A bid deposit

Mailed Bids

- A. Mail-in bid envelopes are required to have printed on the outside: “DO NOT OPEN UNTIL SALE DATE. SEALED BID ENCLOSED.” The sealed bid envelope(s) will be enclosed inside the mailed-in envelope. Mailed bids must be submitted in an envelope with the name of the sale, the bidder’s name and the agreement number clearly written on the outside of the envelope. The full legal name and business address of the bidder must be inserted where indicated on the form, and must be the same on the bid bond and timber sale contract. The bid form must be signed by an authorized person. When a bidder has more than one person authorized to bid, then documentation of those persons with signature authority for bidding must accompany the bid or be on file at the region office. Mail-in envelopes are available at all region offices. One bid per mailed-in envelope.
- B. Mail-in or otherwise delivered bids will be accepted up to 4:30 p.m. the last business day before the auction by the region office in which the sale is located. Bidders assume the risk for the method of delivery they chose. The DNR assumes no responsibility for any delays caused by any delivery service.
- C. Sealed bid envelopes must contain the following:
 1. A completed ‘**Log Sort Sealed Bid Form**’;
 2. A completed ‘**Log Sort Sealed Bid Supplemental Information Form**’ and;
 3. A bid deposit

Department of Natural Resources Region Offices

Olympia Headquarters
 1111 Washington St SE
 MS 47000
 Olympia, WA 98504-7000
 (360) 902-1000
www.dnr.wa.gov

Product Sales & Leasing Division

1111 Washington St SE
 MS 47014
 Olympia, WA 98504-7014
 (360) 902-1600

South Puget Sound Region

950 Fairman Ave N
 Enumclaw, WA 98022-9282
 (360) 825-1631

Pacific Cascade Region

601 Bond Road
 PO Box 280
 Castle Rock, WA 98611-0280
 (360) 577-2025

Southeast Region

713 Bowers Road
 Ellensburg, WA 98926-9301
 (509) 925-8510

Northwest Region

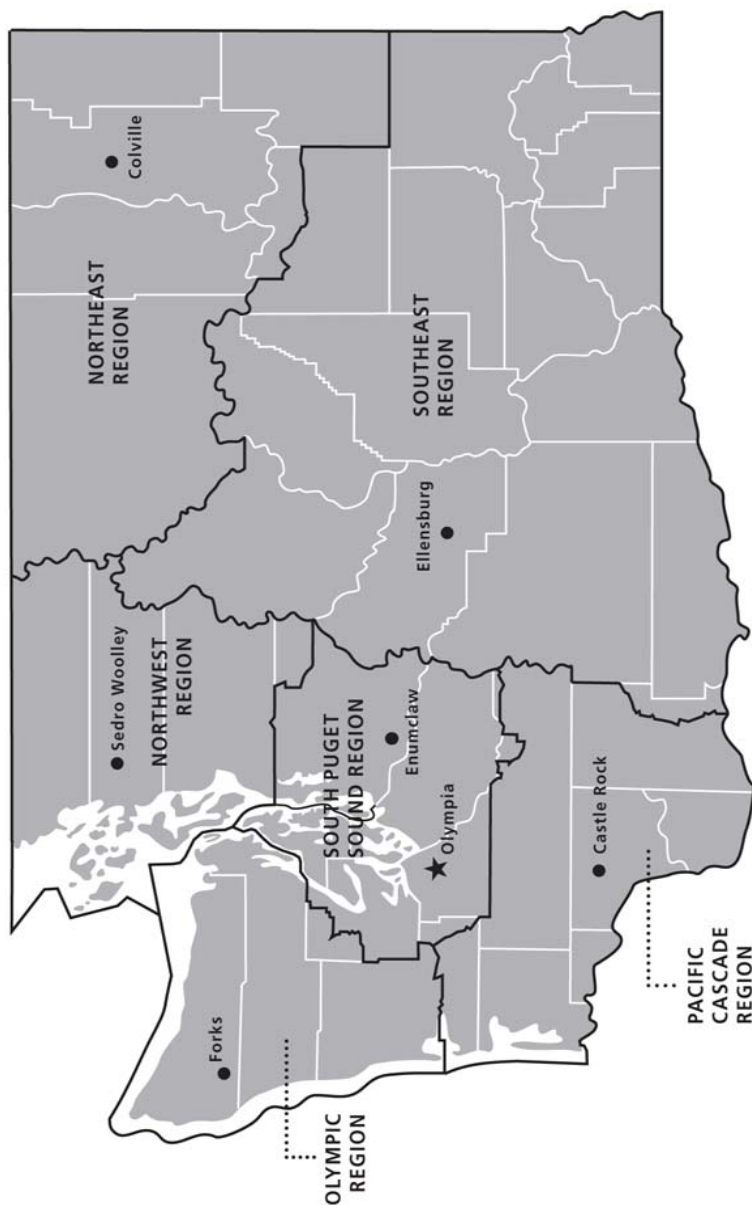
919 N Township St
 Sedro Woolley,
 WA 98284-9384
 (360) 856-3500

Olympic Region





411 Tillicum Lane
 Forks, WA 98331-9271
 (360) 374-2800

Northeast Region

225 S Silke Road
 PO Box 190
 Colville, WA 99114-0190
 (509) 684-7474



DNR REGIONS

-  DNR Region Boundaries
-  County Boundaries
-  DNR Region Office
-  Olympia Headquarters



WASHINGTON STATE DEPT OF
**NATURAL
 RESOURCES**



For more information about how public lands are managed visit DNR's web page at www.dnr.wa.gov

Fire, Burn Ban Information and Region Offices
 Toll Free: 1-800-527-3305 General TTY: 7-1-1



PRINTED ON RECYCLED PAPER. DNR COMMUNICATIONS, MARCH 2013.



WASHINGTON STATE DEPT OF
**NATURAL
RESOURCES**

1111 WASHINGTON ST SE
MS 47014
OLYMPIA WA 98504-7014

www.dnr.wa.gov

For alternate formats
of this document,
Call (360) 902-1000
TRS: 7-1-1

PRINTED IN THE USA ON RECYCLED PAPER

