

State Lands Forest Health

- Forest Health Issue
- Legislative & Policy Milestones
- HB1711
- Accomplishments
- Plan for next biennium
- Funding
- On-going/Next Steps





Leecher Mtn SW 1930

Historical Photo Comparison: Leecher Mtn. SW Okanogan County

Credit: Upper photo:
William B. Osborne,
USDA Forest Service
10/11/1930



Leecher Mtn SW 2011

Bottom photo:
John F. Marshall,
USDA Forest Service
07/07/2011



Forest Dynamism is Natural: Succession and Disturbance

- Forest stands trend to shade tolerant species
- Increased tree densities increases competition for resources and leads to inadequate resources for healthy tree growth
- Insect and disease pathogens increase prevalence in favorable host conditions (i.e. weakened condition)
- Overstocked, diseased and weakened forests create optimal conditions for mega-fires



Photo credit: Danielle Munzing/WADNR



Comparison: Treated, healthy forest stand compared to one with heightened risk for disease & wildfire.



Photos: WADNR



Economic Limitations:

- Fewer mills in parts of eastern Washington limits value in traditional forest products
- Forest health treatments often produce forest products with lower initial value



Photo credit: Danielle Munzing/WADNR



Contributing Factors:

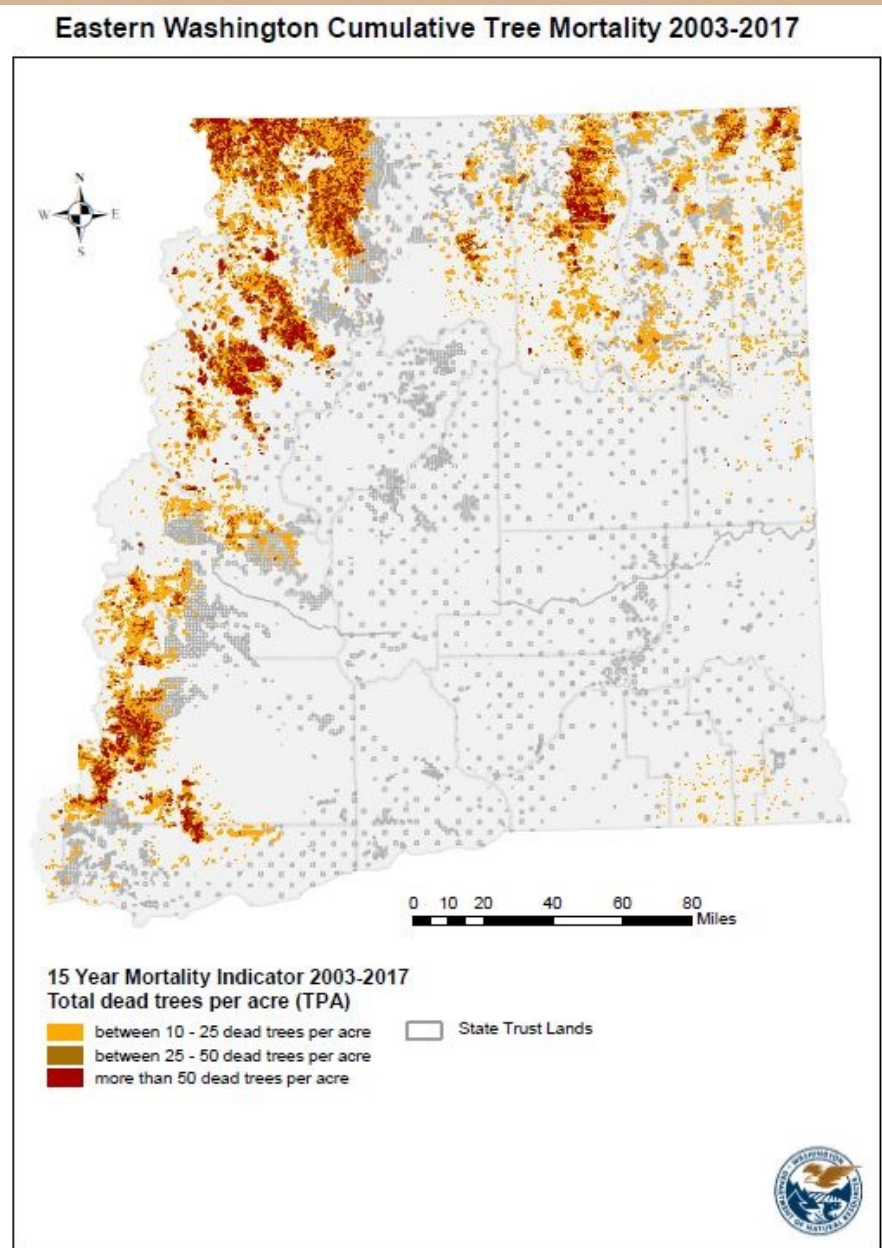
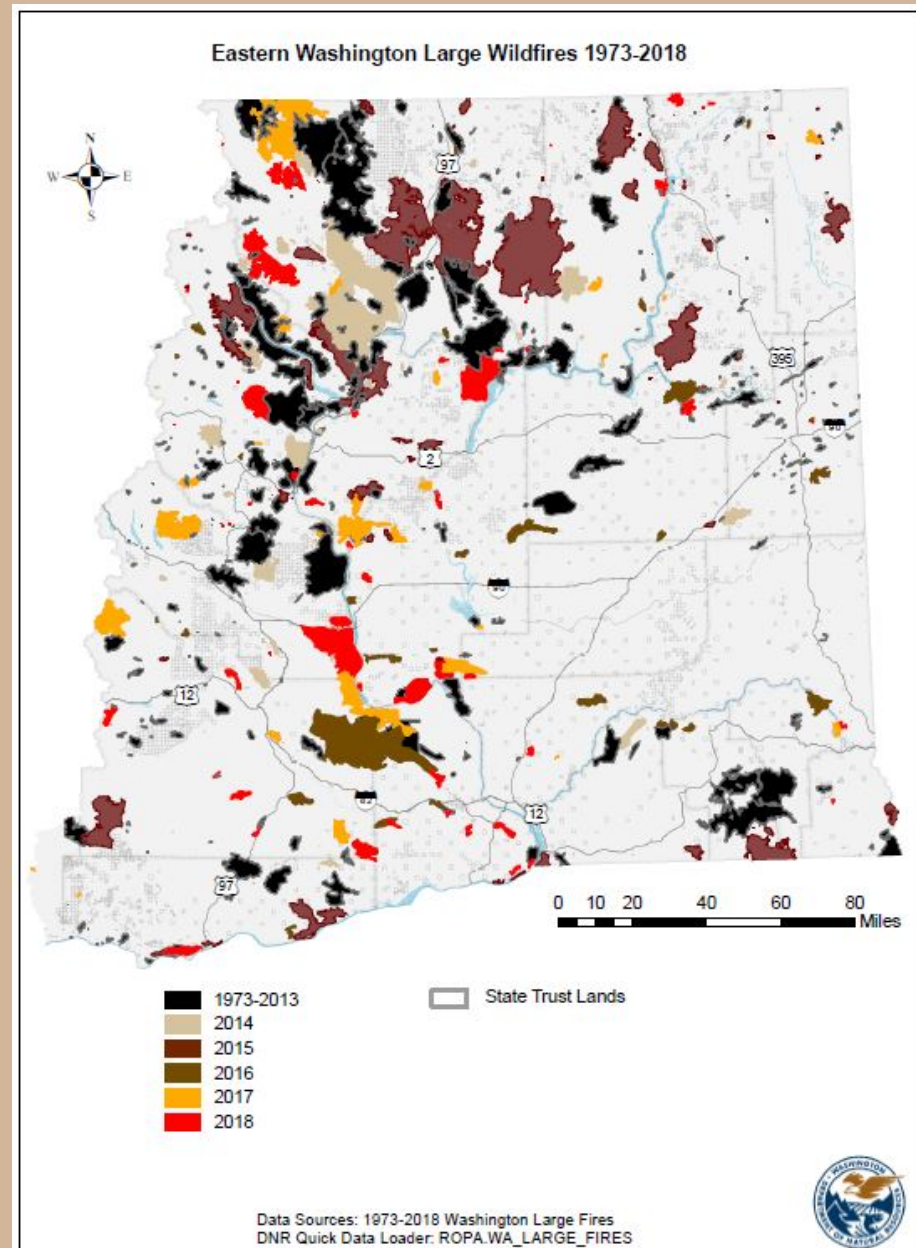
- Warming climate and longer dry seasons
- Increased population in the wildland-urban interface (WUI)



Photo credit: NAIP Imagery/WADNR



Symptoms of the Forest Health Issue...



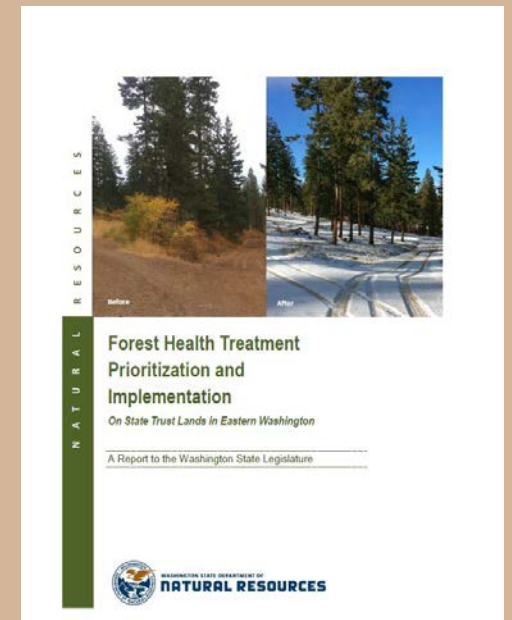
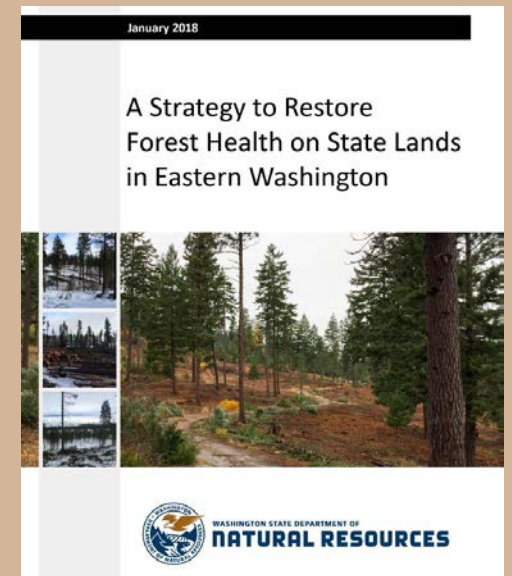
Chronology of Forest Health Legislation & Policy:

- 2004: Forest Health Strategy Work Group & Forest Health Improvement Act → Forest Improvement Treatment (FIT)
- 2006: BNR adopts the Policy for Sustainable Forests (PSF)
- 2007: DNR initiates first forest health hazard warning process & convened a Forest Health Technical Advisory Committee
- 2010: State Legislature directs supplemental funding for forest health treatments
- 2012: CPL issues first forest health hazard warning areas
- 2016: HB 2037 – 20-Year Forest Health Strategic Plan
- 2017: HB 5546 and HB 1711



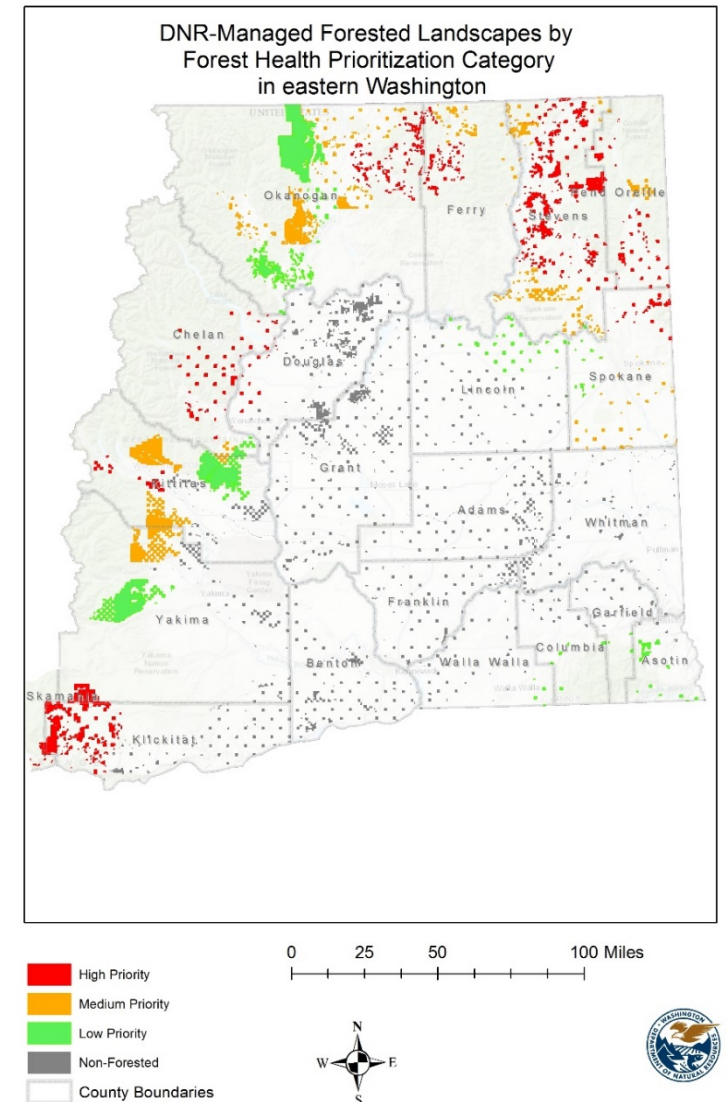
HB 1711 State Lands:

- Develop and implement a policy for prioritizing forest health treatments
- Prioritize state trust landscapes for forest health treatments for the next 2, 6, and 20 year periods
- Authorized Forest Health Revolving Account (FHRA)
- Report to the Legislature even-numbered years



HB 1711 Prioritization must consider the value of:

- Timber or other commercial forest products removed
- Timber or other commercial forest products spared
- Homes, structures, agriculture, and public infrastructure spared
- Impacts to recreation and tourism
- Ecosystem services, such as water quality



Progress & Assessments on State Trust Lands:

- 2004-2015: ~51,000 acres of forest health treatments under the FIT program
- 2015: Haugo et al. reported ~257,000 acres needing treatment on state trust lands
- 2015-2018: ~60,000 acres of forest health treatments on state trust lands
- 2018: State Lands assessment revealed ~190,000 acres of state trust lands still need treatment
 - High priority landscapes: ~121,000 acres
 - Medium priority landscapes: ~35,000 acres
 - Low priority landscapes: ~34,000 acres

| Ownership | Total Active Restoration Need | |
|------------------------|-------------------------------|---------|
| | Acres | Percent |
| USFS | 1,111,434 | 42% |
| State-DNR | 257,434 | 10% |
| State-Other | 46,227 | 2% |
| Tribal | 397,782 | 15% |
| Private Industrial | 319,923 | 12% |
| Private Non-Industrial | 466,414 | 17% |
| Other | 71,050 | 3% |
| Total | 2,678,504 | |



Plan for Next Biennium: FY 2020 & FY 2021

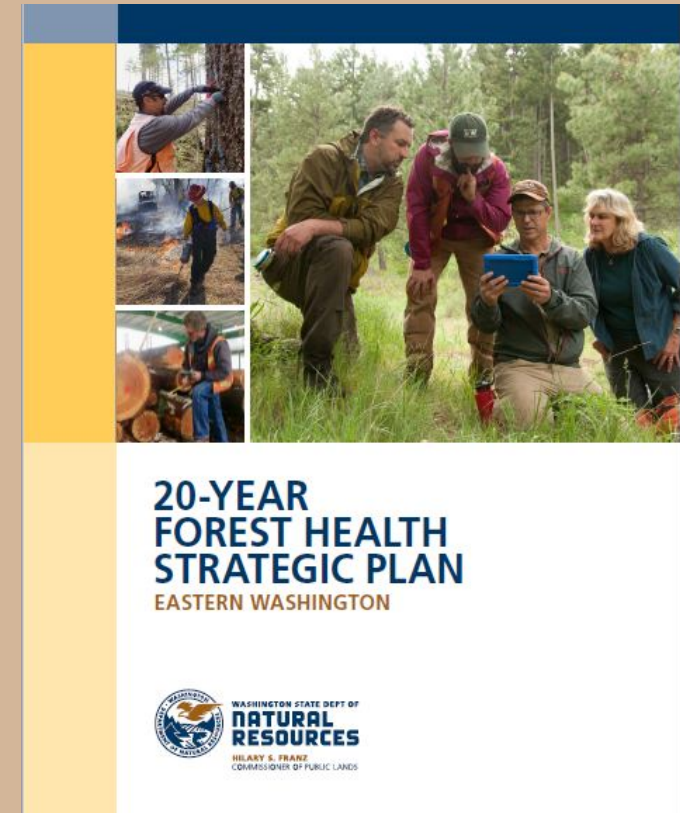
| Fiscal year | Landscape priority | Commercial treatment Acres | Non-commercial treatment Acres | Total Acres | % of fiscal year |
|-------------|--------------------|----------------------------|--------------------------------|-------------|------------------|
| 2020 | High | 3,822 | 9,481 | 13,303 | 47% |
| | Medium | 3,731 | 2,975 | 6,706 | 23% |
| | Low | 454 | 8,041 | 8,495 | 30% |
| 2021 | High | 4,149 | 8,788 | 12,937 | 50% |
| | Medium | 3,957 | 4,153 | 8,110 | 31% |
| | Low | 555 | 4,450 | 5,005 | 19% |
| | Totals | 16,668 | 37,888 | 54,556 | |



Plan for Next Biennium:

State Lands activities alignment with 20-Year Strategy:

- 64% of planned treatments in high priority watersheds identified by the 20-Year Forest Health Strategic Plan



Funding Plan for Next Biennium:

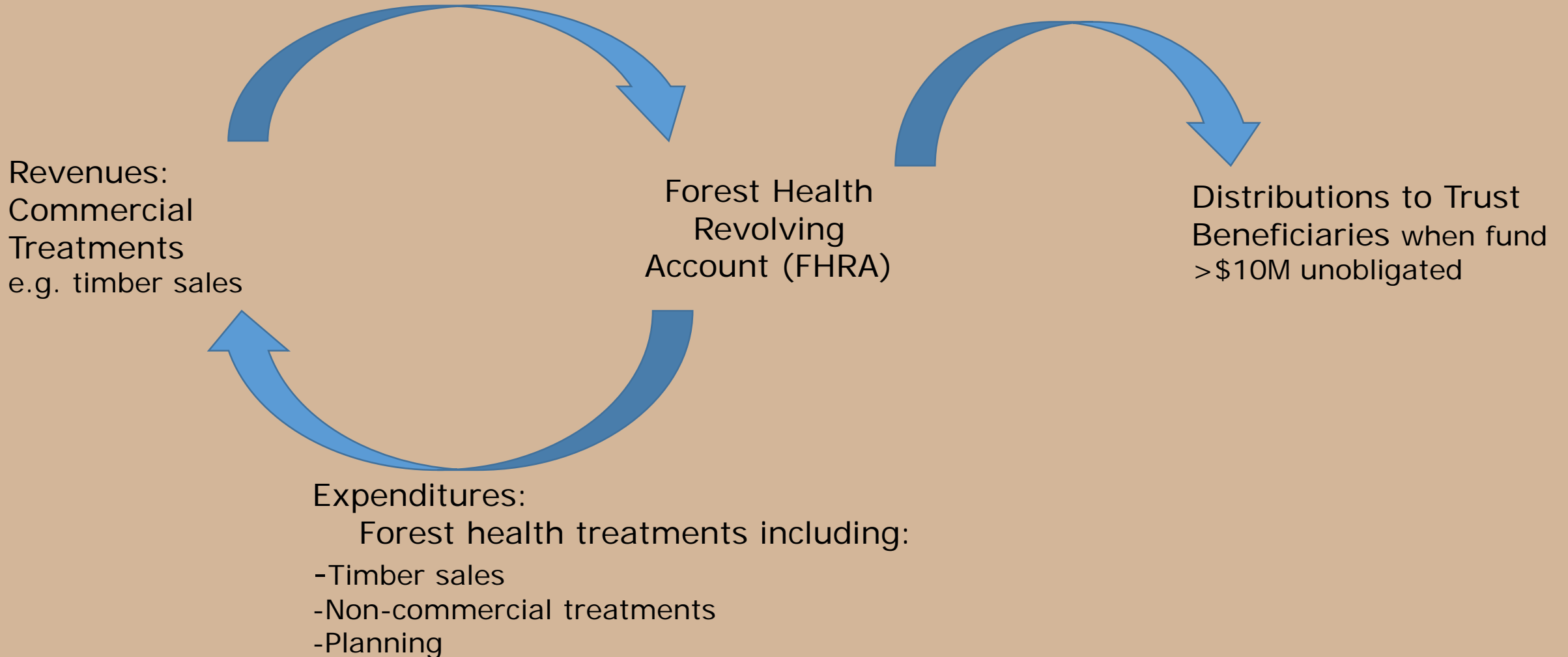
- Capital Funding
 - 19-21 biennium request for \$3M to fund 9,300 acres of non-commercial treatments and over 600 acres of commercial treatments
- Forest Health Revolving Account
 - Allows revenues from commercial forest health treatments to directly fund non-commercial forest health treatments



Photo credit: Joe Smith/WA DNR



Forest Health Revolving Account



Funding for Next Biennium:

| Fiscal Year | FY 2018 | FY 2019 | FY 2020 | FY 2021 |
|------------------------|---------|---------|---------|---------|
| Beginning Fund Balance | \$0 | \$4.1m | \$9m | \$9.7m |
| Revenue | \$6m | \$7.5m | \$8.6m | \$10.4m |
| Expenditures | \$1.8m | \$2.5m | \$8m | \$8m |
| Ending Fund Balance | \$4.1m | \$9m | \$9.7m | \$12.1m |



Next Steps:

- Continue prioritizing landscapes and stands to develop 2, 6, and 20-year treatment schedules
- Implement and monitor treatments
- Develop guidance for prescribed fire on state trust lands
- Prepare for establishing an eastside sustainable harvest calculation



Photo credit: Joe Smith/WA DNR



Questions?



Photo credit: Danielle Munzing/WADNR

