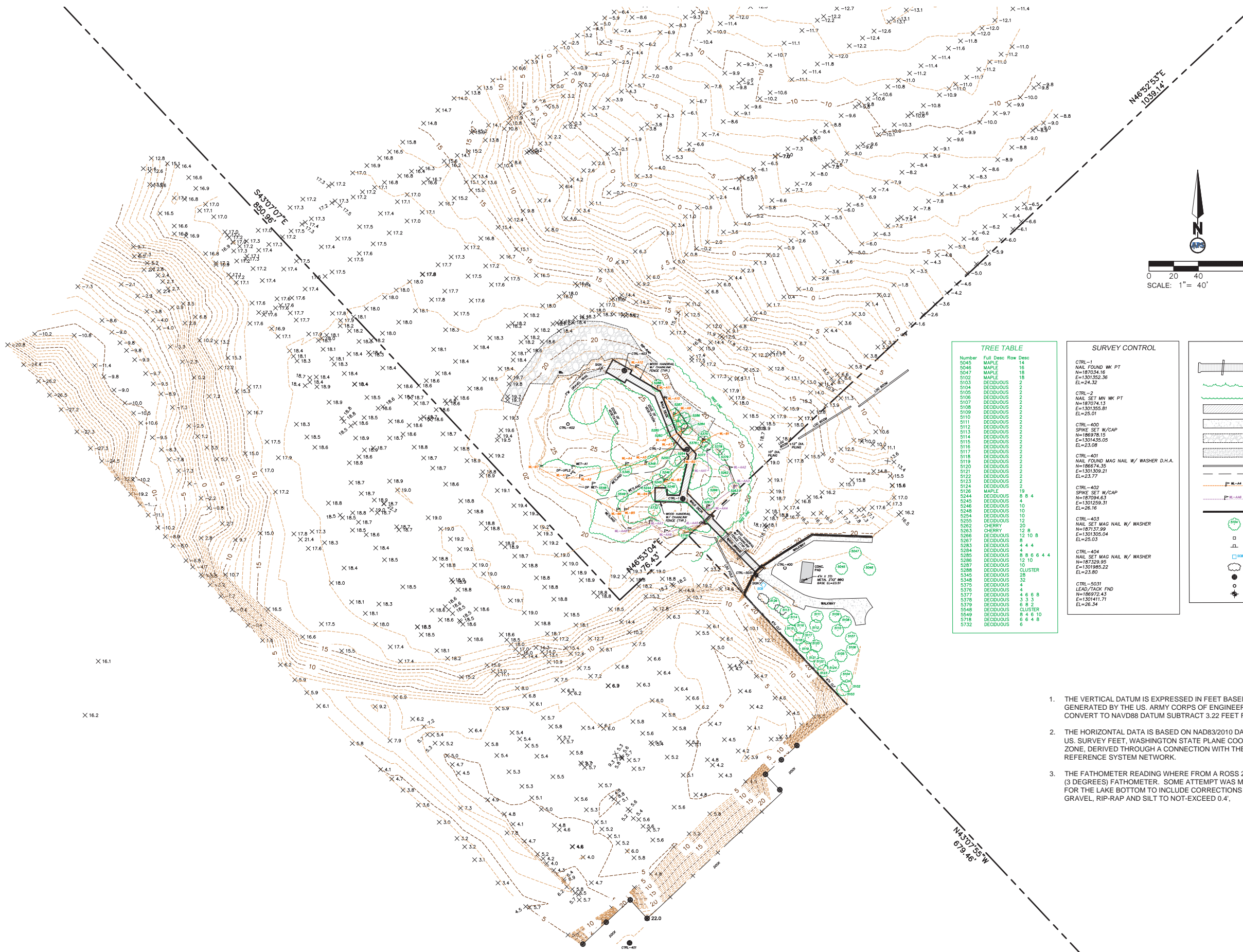


WITHIN THE SW 1/4 OF SECTION 05, TOWNSHIP 23 NORTH, RANGE 05 EAST, W.M., IN KING COUNTY, WASHINGTON



TREE TABLE

Number	Full Desc	Row	Desc
5045	MAPLE	14	
5046	MAPLE	16	
5047	MAPLE	18	
5102	MAPLE	18	
5103	DECIDUOUS	2	
5105	DECIDUOUS	2	
5106	DECIDUOUS	2	
5107	DECIDUOUS	2	
5108	DECIDUOUS	2	
5109	DECIDUOUS	2	
5110	DECIDUOUS	2	
5111	DECIDUOUS	2	
5112	DECIDUOUS	2	
5113	DECIDUOUS	2	
5121	DECIDUOUS	2	
5115	DECIDUOUS	2	
5116	DECIDUOUS	2	
5117	DECIDUOUS	2	
5118	DECIDUOUS	2	
5119	DECIDUOUS	2	
5120	DECIDUOUS	2	
5121	DECIDUOUS	2	
5122	DECIDUOUS	2	
5123	DECIDUOUS	2	
5124	DECIDUOUS	2	
5126	MAPLE	19	8 4
5244	DECIDUOUS	4	
5245	DECIDUOUS	4	
5246	DECIDUOUS	10	
5248	DECIDUOUS	10	
5254	DECIDUOUS	10	
5255	DECIDUOUS	12	8
5262	CHERRY	20	
5263	CHERRY	12	8
5266	DECIDUOUS	12	10 8
5267	DECIDUOUS	8	
5283	DECIDUOUS	4	4 4
5284	DECIDUOUS	4	8 6 6 4 4
5285	DECIDUOUS	12	10
5286	DECIDUOUS	12	10
5287	DECIDUOUS	10	
5288	DECIDUOUS	CLUSTER	
5345	DECIDUOUS	28	
5348	DECIDUOUS	32	
5376	DECIDUOUS	4	
5377	DECIDUOUS	4	6 6 8
5378	DECIDUOUS	3	3
5379	DECIDUOUS	6	8 2
5548	DECIDUOUS	CLUSTER	
5549	DECIDUOUS	8	4 6 10
5718	DECIDUOUS	6	4 8
5732	DECIDUOUS	6	

SURVEY CONTROL

CTRL-1	NAIL FOUND W/ PT	N=187034.16	E=1301352.36	EL=24.32
CTRL-2	NAIL SET W/ W/ CAP	N=187074.13	E=1301355.81	EL=25.01
CTRL-400	SPIKE SET W/CAP	N=186978.10	E=1301435.05	EL=23.08
CTRL-401	NAIL FOUND MAG NAIL W/ WASHER D.H.A.	N=186674.35	E=1301309.21	EL=23.77
CTRL-402	SPIKE SET W/CAP	N=187094.83	E=1301259.31	EL=26.16
CTRL-403	NAIL SET MAG NAIL W/ WASHER	N=187137.99	E=1301305.04	EL=25.03
CTRL-404	NAIL SET MAG NAIL W/ WASHER	N=187329.95	E=1301365.22	EL=23.80
CTRL-5031	LEAD/TACK FND	N=186972.43	E=1301411.71	EL=26.34

LEGEND

	WALK BRIDGE
	APPROX. TREE LINE
	EDGE OF VEGETATION
	WOOD PLATFORM
	CONCRETE SURFACE
	RIP-RAP
	GRAVELLED SURFACE
	LOG BOOM
	WETLANDS
	WETLAND ORANGE FLAG WITH REFERENCE MARKING
	WETLAND PINK FLAG WITH REFERENCE MARKING
	CONCRETE WALL
	DECIDUOUS TREE WITH REFERENCE NUMBER
	BBQ GRILL
	SIGN
	SPRINKLER CONTROL BOX
	DECIDUOUS BUSH
	SURVEY CONTROL - MAG NAIL
	SURVEY CONTROL - SET SPIKE W/ CAP
	SURVEY CONTROL - LEAD/TACK

1. THE VERTICAL DATUM IS EXPRESSED IN FEET BASED ON LOCH DATA GENERATED BY THE US. ARMY CORPS OF ENGINEERS, SEATTLE. TO CONVERT TO NAVD88 DATUM SUBTRACT 3.22 FEET FROM LAKE DATA.
2. THE HORIZONTAL DATA IS BASED ON NAD83/2010 DATA EXPRESSED IN US. SURVEY FEET, WASHINGTON STATE PLANE COORDINATES, NORTH ZONE, DERIVED THROUGH A CONNECTION WITH THE WASHINGTON REFERENCE SYSTEM NETWORK.
3. THE FATHOMETER READING WERE FROM A ROSS 2500 SINGLE BEAM (3 DEGREES) FATHOMETER. SOME ATTEMPT WAS MADE TO CORRECT FOR THE LAKE BOTTOM TO INCLUDE CORRECTIONS FOR GRASS, GRAVEL, RIP-RAP AND SILT TO NOT EXCEED 0.4'.

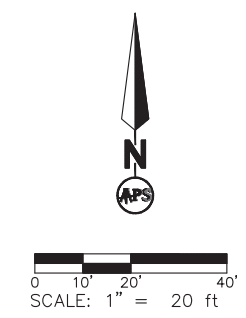
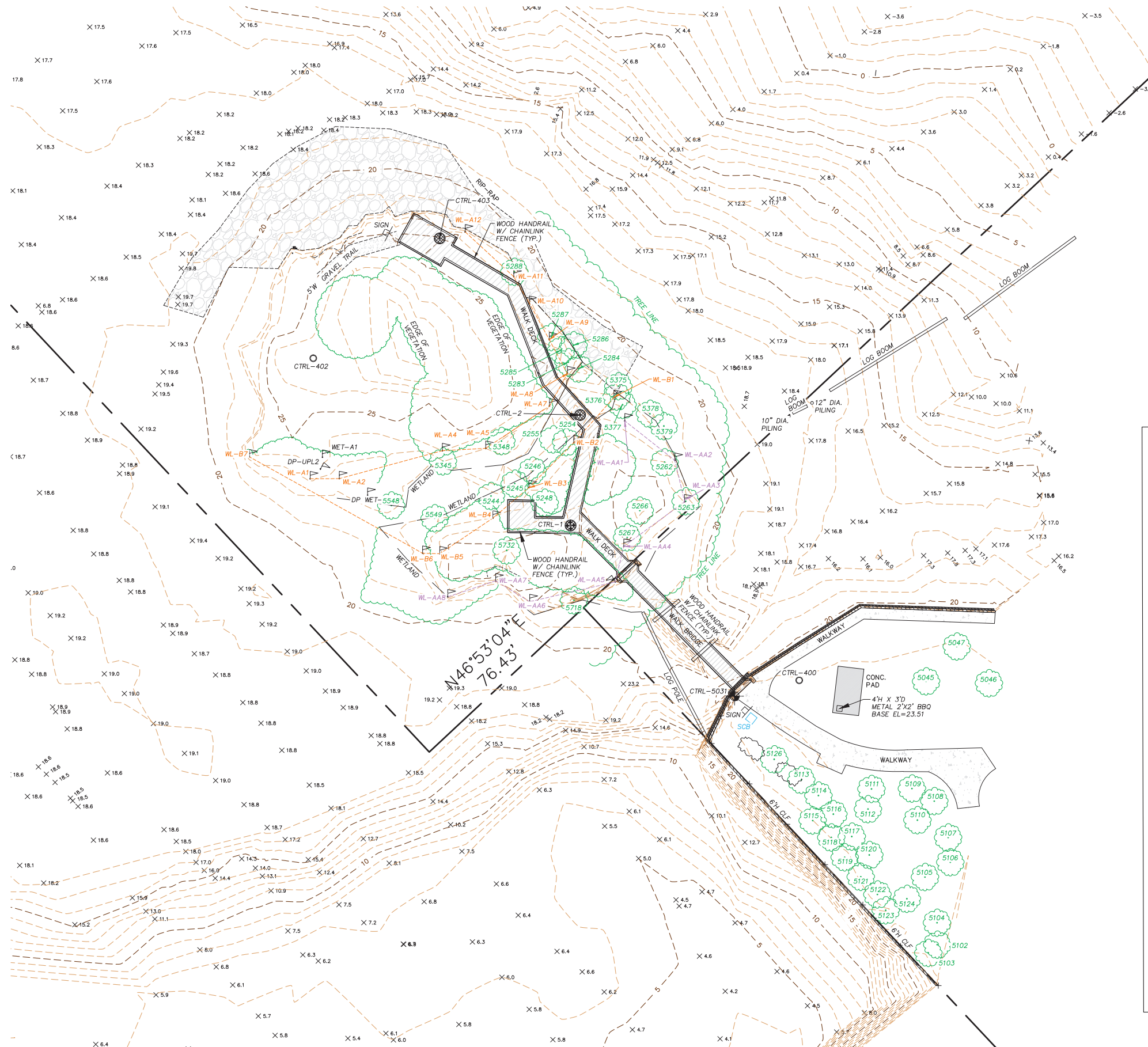


BIRD ISLAND RESTORATION PROJECT
IN GENE COULON PARK LIMITED SURVEY
 For PND ENGINEERS, INC
 WASHINGTON
 APSSM_PROJECT NO.: 1081024
 ACAD DWG NAME: 1081024surface.dwg
 DATE: 6/04/15
 RENTON

SURVEYED BY:	CHECKED BY:	APPR.
DRAWN BY:	APPROVED BY:	
DATE	REVISION	CK'D
BY		

SHEET 1 OF 2

WITHIN THE SW 1/4 OF SECTION 05, TOWNSHIP 23 NORTH, RANGE 05 EAST, W.M., IN KING COUNTY, WASHINGTON



1. THE VERTICAL DATUM IS EXPRESSED IN FEET BASED ON LOCH DATA GENERATED BY THE US. ARMY CORPS OF ENGINEERS, SEATTLE. TO CONVERT TO NAVD88 DATUM SUBTRACT 3.22 FEET FROM LAKE DATA.
2. THE HORIZONTAL DATA IS BASED ON NAD83/2010 DATA EXPRESSED IN US. SURVEY FEET, WASHINGTON STATE PLANE COORDINATES, NORTH ZONE, DERIVED THROUGH A CONNECTION WITH THE WASHINGTON REFERENCE SYSTEM NETWORK.
3. THE FATHOMETER READING WHERE FROM A ROSS 2500 SINGLE BEAM (3 DEGREES) FATHOMETER. SOME ATTEMPT WAS MADE TO CORRECT FOR THE LAKE BOTTOM TO INCLUDE CORRECTIONS FOR GRASS, GRAVEL, RIP-RAP AND SILT TO NOT EXCEED 0.4'.

LEGEND

	WALK BRIDGE
	APPROX. TREE LINE
	EDGE OF VEGETATION
	WOOD PLATFORM
	CONCRETE SURFACE
	RIP-RAP
	GRAVELED SURFACE
	LOG BOOM
	WETLANDS
	WETLAND ORANGE FLAG WITH REFERENCE MARKING
	WETLAND PINK FLAG WITH REFERENCE MARKING
	CONCRETE WALL
	DECIDUOUS TREE WITH REFERENCE NUMBER
	BBQ GRILL
	SIGN
	SPRINKLER CONTROL BOX
	DECIDUOUS BUSH
	SURVEY CONTROL - MAG NAIL
	SURVEY CONTROL - SET SPIKE W/ CAP
	SURVEY CONTROL - LEAD/TACK

APS SURVEY & MAPPING
 18274 S.E. 87TH STREET, SUITE A
 BELLEVUE, WASHINGTON 98005
 TEL: (425) 746-3200
 FAX: (425) 746-3342

VOSB
 Veteran Owned Small Business
 CM



BIRD ISLAND RESTORATION PROJECT
 IN GENE COULON PARK LIMITED SURVEY

For PND ENGINEERS, INC

WASHINGTON
 ACAD. DWG. NAME: 1081024surface.dwg
 APSSM PROJECT NO.: 1081024
 DATE: 6/04/15
 RENTON

SURVEYED BY: TJS	CHECKED BY:	APPR.
DRAWN BY: MAGG	APPROVED BY:	
DATE	BY	REVISION
		CK'D