

A photograph of three forest workers in a dense pine forest. The worker on the left wears a blue beanie and a dark jacket. The worker in the middle wears an orange helmet and a dark jacket, holding a chainsaw. The worker on the right wears an orange helmet and a red jacket. The background is filled with tall pine trees and a forest floor covered in pine needles and branches. An orange arrow graphic points to the right on the left side of the image.

Shared Stewardship in the Mt. Adams Region

Presentation by Jay McLaughlin, Executive Director

Mt. Adams Resource Stewards

Proposed Planning Areas for 20-Year Forest Health Strategic Plan
Eastern Washington Forest Health Priority HUC 6 Watersheds

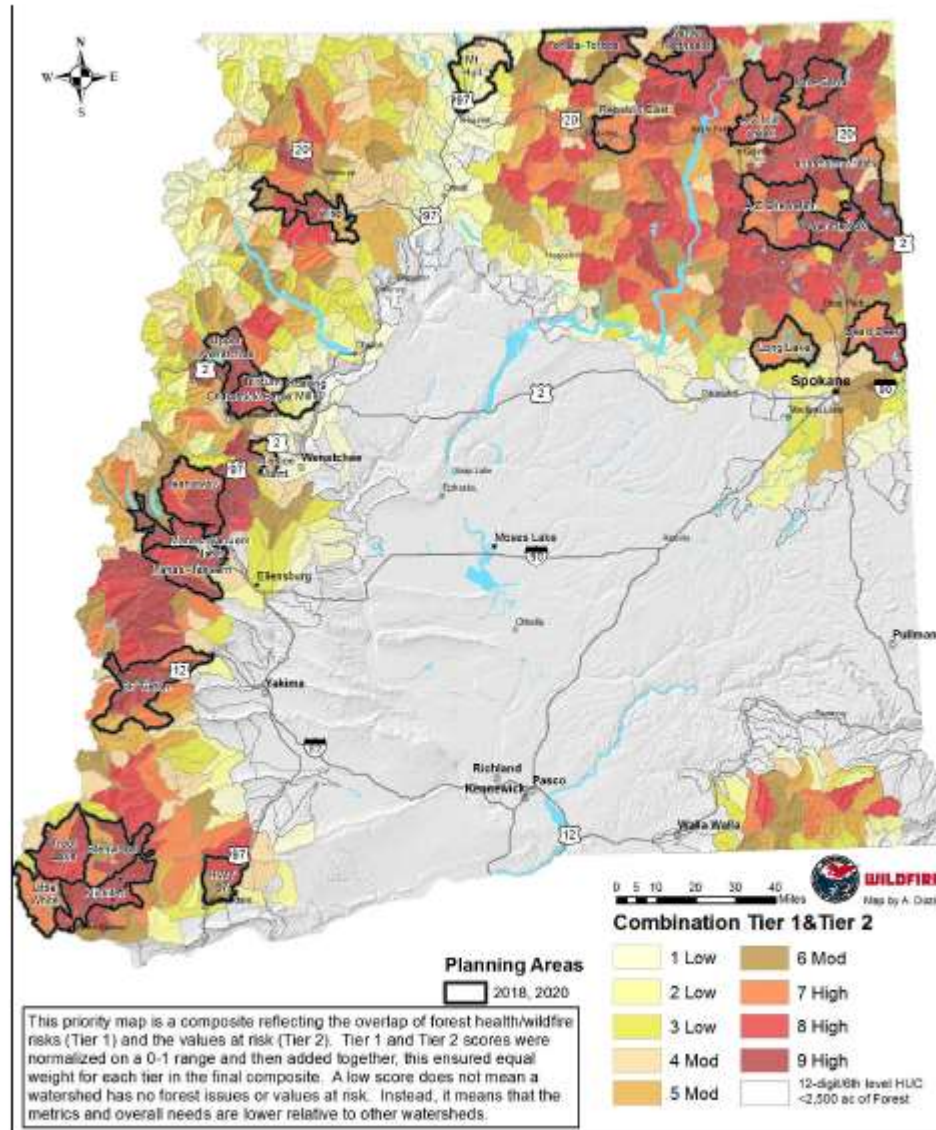
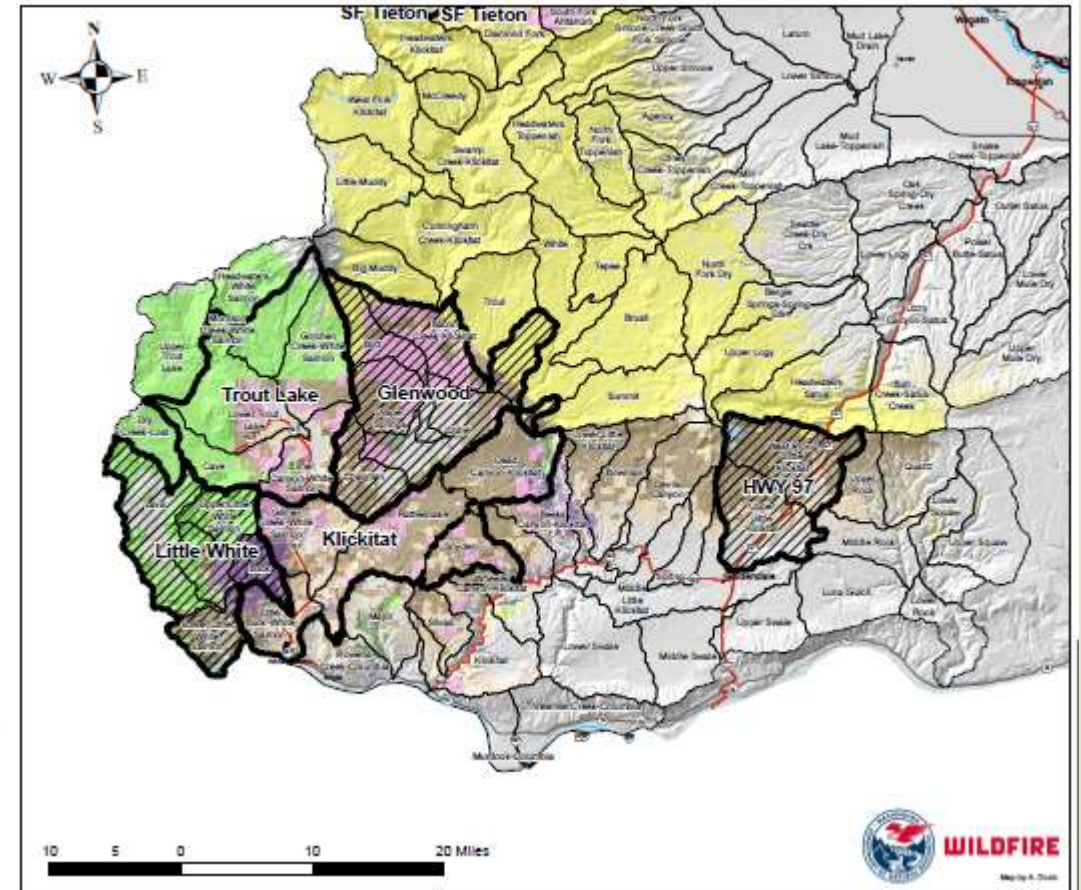
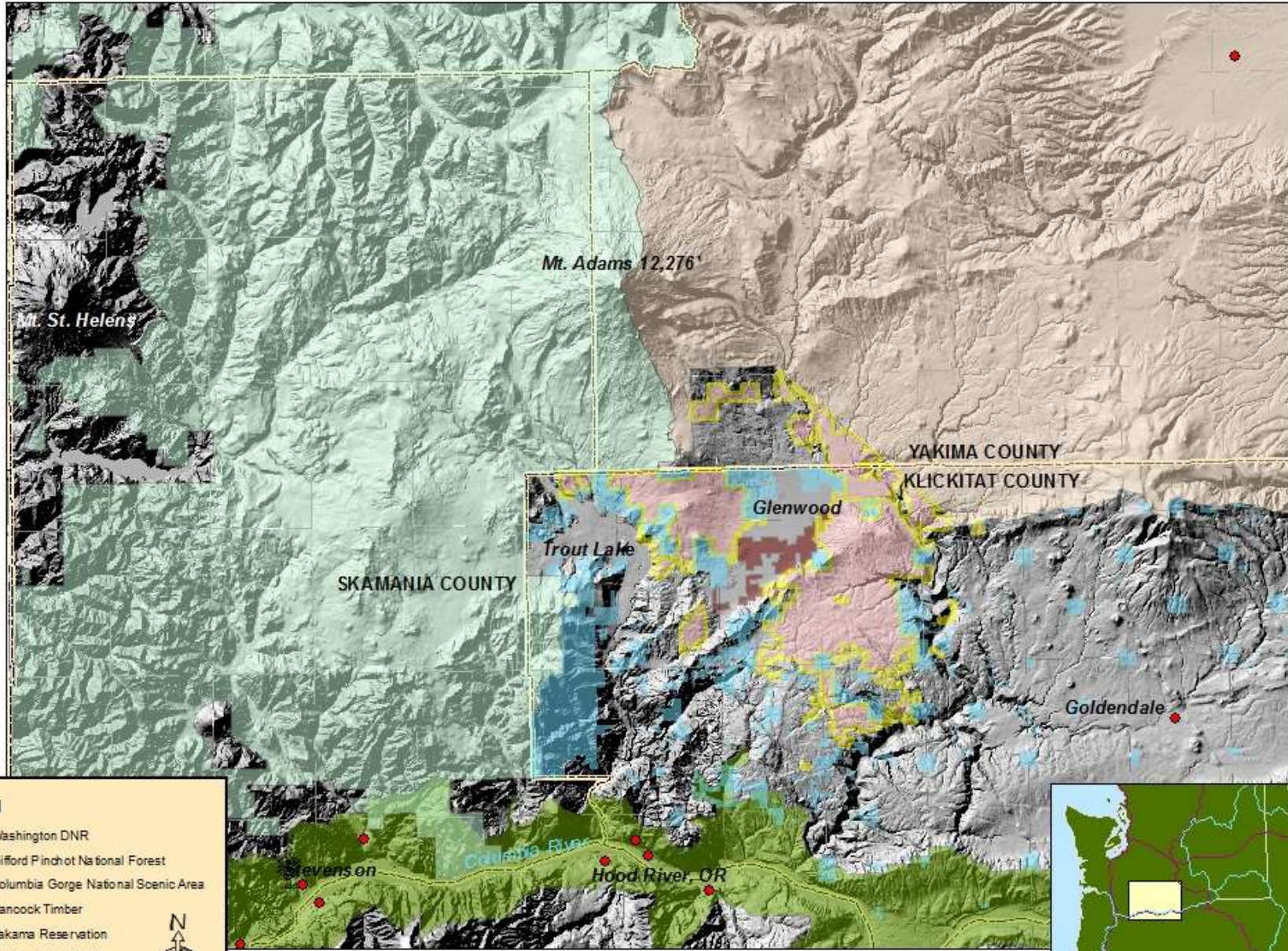


Figure 4: Proposed 2018 and 2020 Planning Areas for the 20-Year Forest Health Strategic Plan/SB 5546 and with priority ranking of HUC 6 Watersheds based on multiple resource.

South GP Collaborative Area




Source: Washington DNR (20 Year Forest Health Strategic Plan)



Legend

- Washington DNR
- Gifford Pinchot National Forest
- Columbia Gorge National Scenic Area
- Hancock Timber
- Yakama Reservation
- Conboy Lane NWR
- Washington Counties

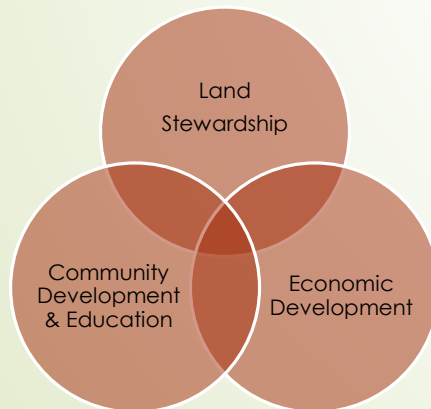




Mt. Adams Resource Stewards - Focal Area

MT. ADAMS RESOURCE STEWARDS

- ▶ 501(c)(3) non-profit organization established in 2004
- ▶ Mission “to promote sustainable connections between the land, local economies and rural communities of the Mt. Adams region...”
- ▶ Governed by a ten member board that reside in our operating area
- ▶ Currently three full-time staff, four seasonals



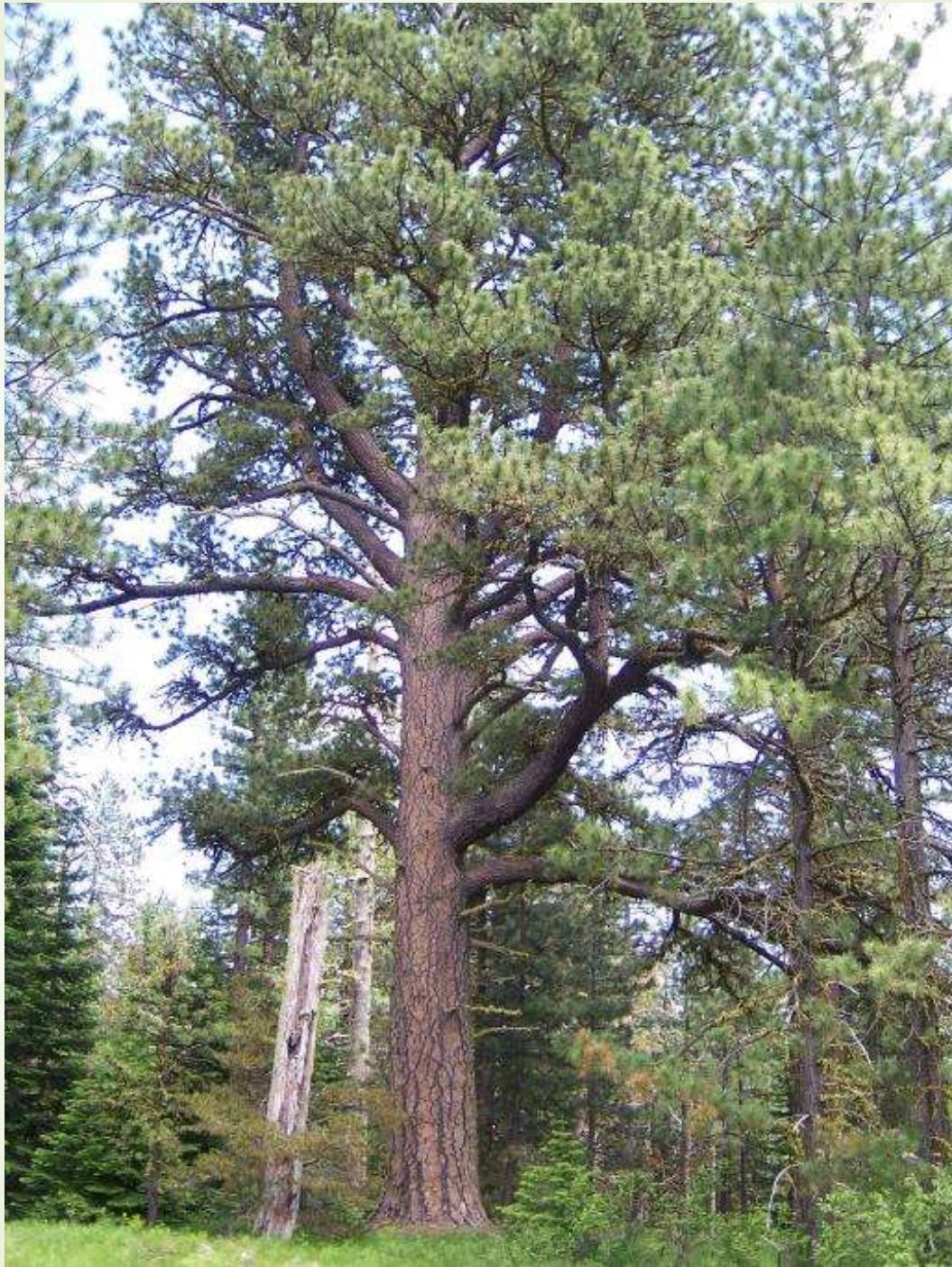
SOUTH GIFFORD PINCHOT COLLABORATIVE

- Mt. Adams District Collaborative formed in 2008 with Skamania County, Mt. Adams Resource Stewards, Gifford Pinchot Task Force and the Gifford Pinchot Accountability Group as the founding, core members
- Merged with the Lewis River Collaborative to form the S. Gifford Pinchot Collaborative in 2011
- Currently has 22 members from local government, industry, tribal, environmental, recreation and community development sectors.
- Part-time coordinator; fiscally sponsored by MARS

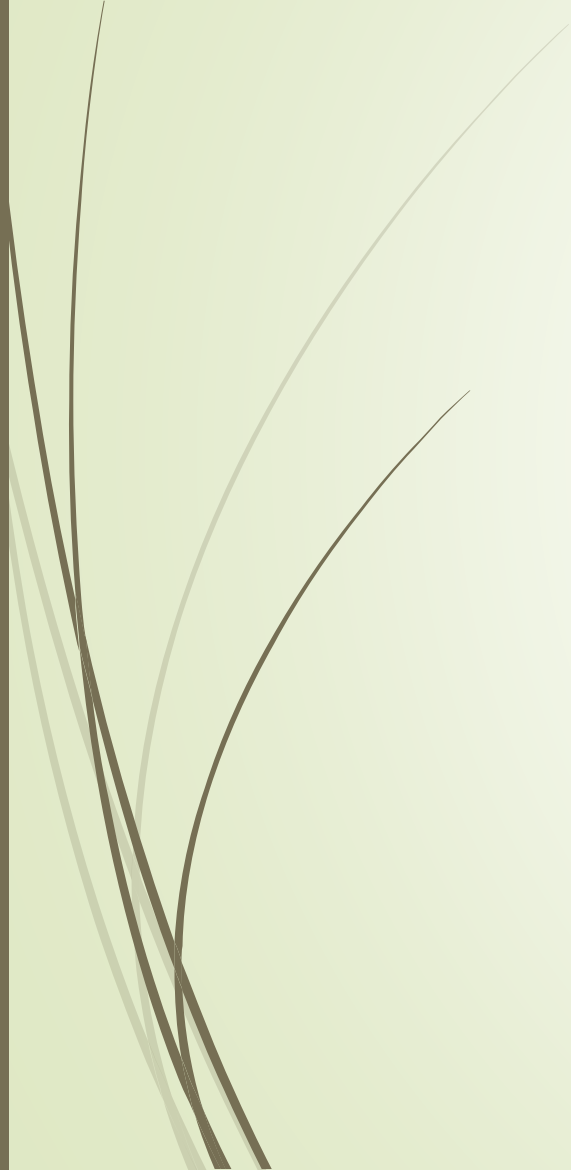






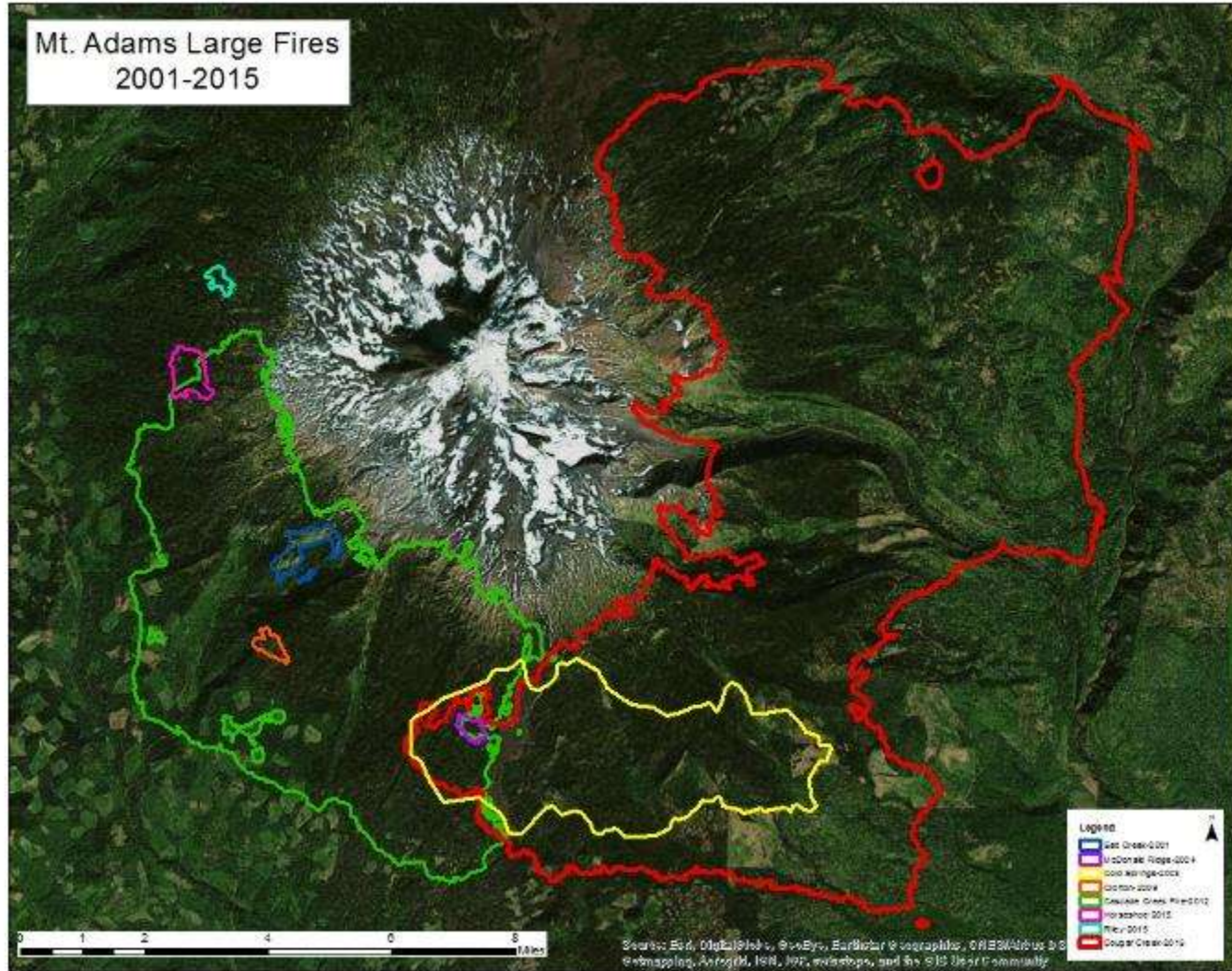








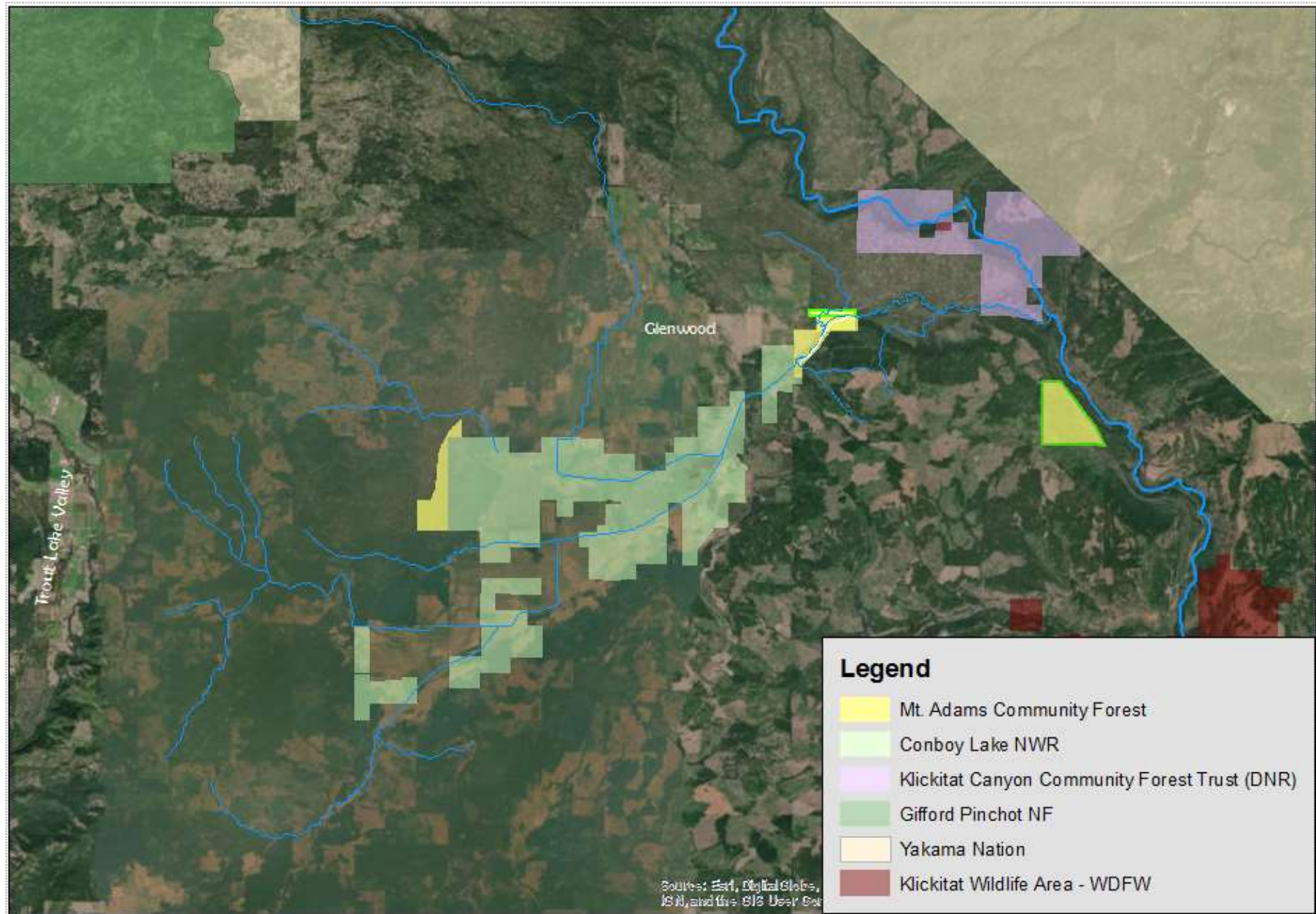
Mt. Adams Large Fires 2001-2015



MARS established with the following interests:

- Prevent conversion and loss of working forests and expansion of WUI
- Explore wood product and biomass development opportunities that can improve economics of fuels reduction, forest health treatments, etc.
- Engage in partnerships that contribute to landscape scale forest resiliency
- Promote and support collaborative work on national forest system lands to increase pace and scale of restoration
- Prevent further erosion of logging sector and develop reliable, high quality “stewardship” workforce





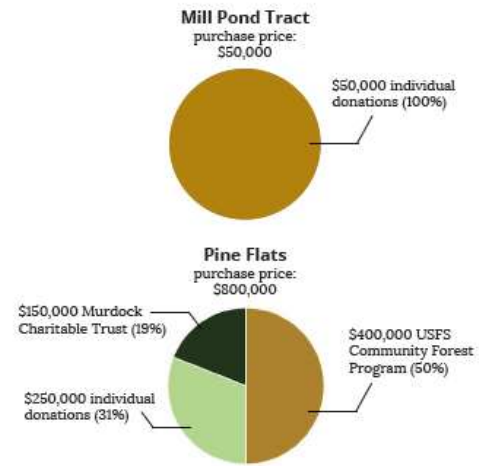
Mt. Adams Community Forest and Surrounding Lands





Land Acquisition

MARS secured approximately \$850,000 from the federal government, foundations and private individuals to purchase MACF properties.



Forest Management

The MACF permanently protects working forestlands from conversion and development.

Management goals on the community forest are to focus on improving forest health by reducing fire hazards, creating multiple age-classes within the forest and favoring the growth and development of underrepresented fire adapted ecosystems while continuing harvest activities that support a viable local forest industry.



Stewardship in action 2011-present (non-NFS lands)

- ▶ 542 acres in community forest ownership- will increase to over 1,000 acres in next several weeks
- ▶ Developed forest management plans covering 1,800+ acres of forest for small private landowners
- ▶ 2,000+ acres mechanically treated
- ▶ 424 acres of initial entry prescribed fire completed
- ▶ \$3.4M in gross revenues from commercial timber sold from forest health treatments



Collaborative Successes

- ▶ Over eight years without an appeal
- ▶ \$4M+ in retained receipts from collaborative involved projects
- ▶ Consensus and/or ZOA's established around planation thinning and natural stand harvest
- ▶ Working toward early seral habitat creation ZOA
- ▶ Two successful all lands grant proposals w/ MARS to advance fuel break and Rx burning by several years

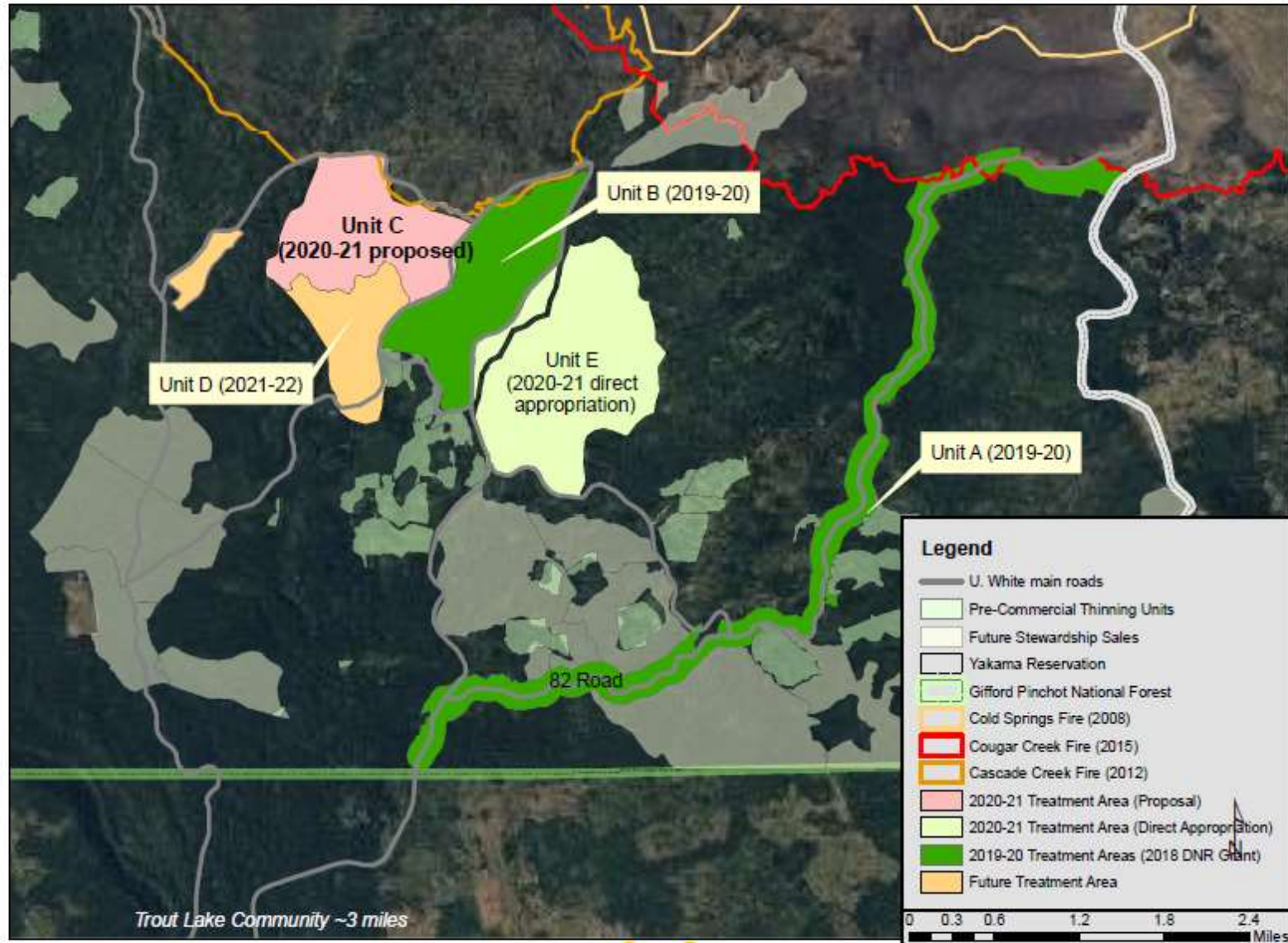


MARS as an implementation partner for the Mt. Adams Ranger District

- ▶ Administered stand exam contract on 8,000 acres of stands in Cave-Bear Planning Area (2011)
- ▶ Completed five projects for USFS in inaugural 2018 crew season ranging from meadow enhancement to seed orchard maintenance to fence construction



Upper White Fuels Projects 2019-2022 Gifford Pinchot National Forest



MARS as an implementation partner for the Mt. Adams Ranger District

- ▶ Administered stand exam contract on 8,000 acres of stands in Cave-Bear Planning Area (2011)
- ▶ Completed five projects for USFS in inaugural 2018 crew season ranging from meadow enhancement to seed orchard maintenance to fence construction
- ▶ 2019 field season brought expanded crew capacity and work with contractors to complete
 - ▶ 98 acres of shaded fuel break construction w/ hand crew
 - ▶ 200 acres of shaded fuel break construction w masticators
 - ▶ 289 acre Rx burn unit prepped for 2020 burn







Duff pullback
on legacy pine
in preparation
for next year's
Rx burn





Funding Sources and Mechanisms for Stewardship Crew Program and Project Work

- ▶ Washington Department of Natural Resources
- ▶ Washington Fire Adapted Communities Learning Network
- ▶ Coalitions and Collaboratives: Action Into Implementation
- ▶ Weyerhaeuser Family Foundation
- ▶ USFS Stewardship Agreement
- ▶ USFS Challenge Cost-Share
- ▶ USFWS Cooperative Land Management Agreement
- ▶ Fee-for-service