



# Haven Lake Trespass

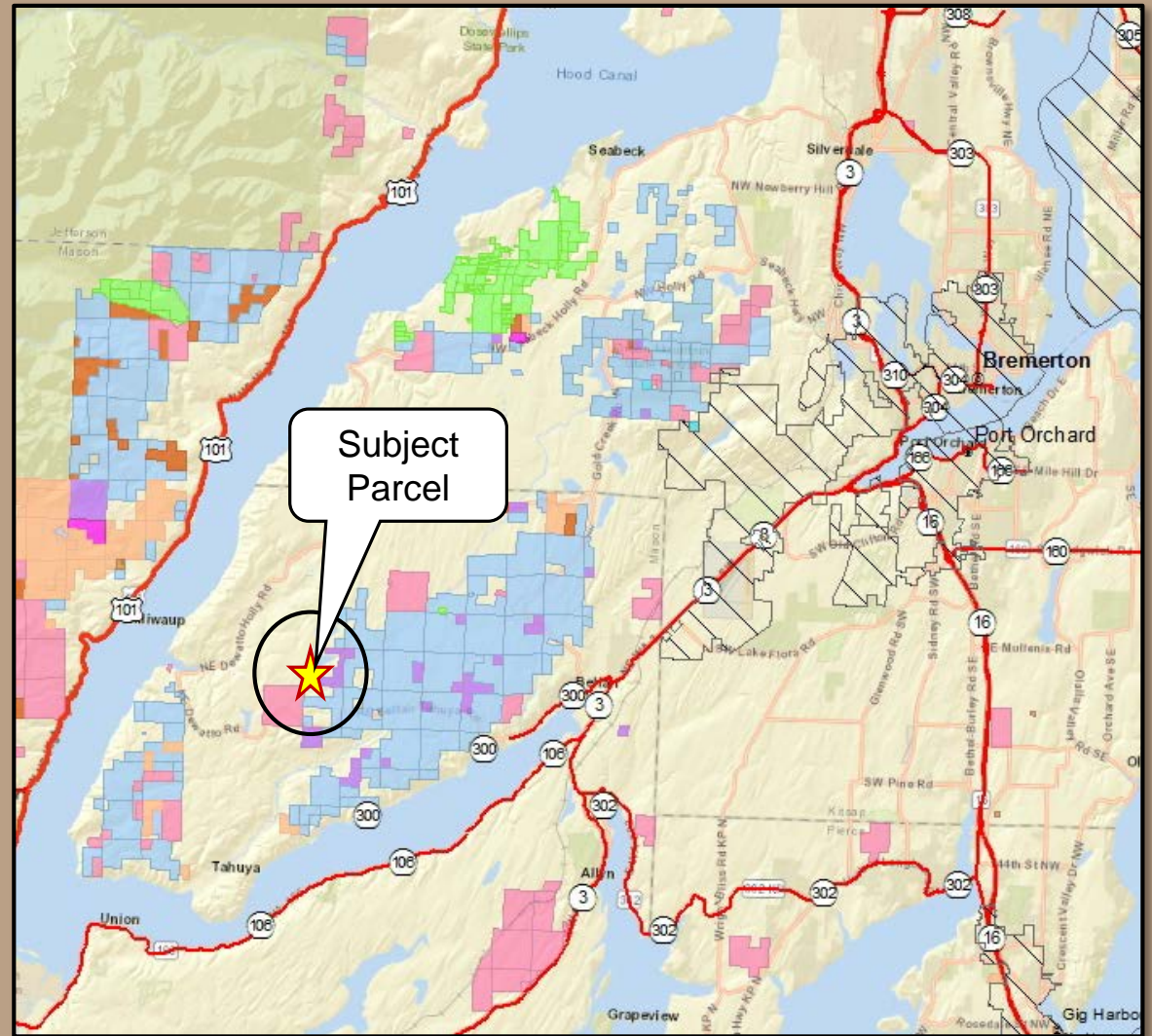
## PROPOSED DIRECT TRANSFER Mason County



# Haven Lake Trespass

## Location

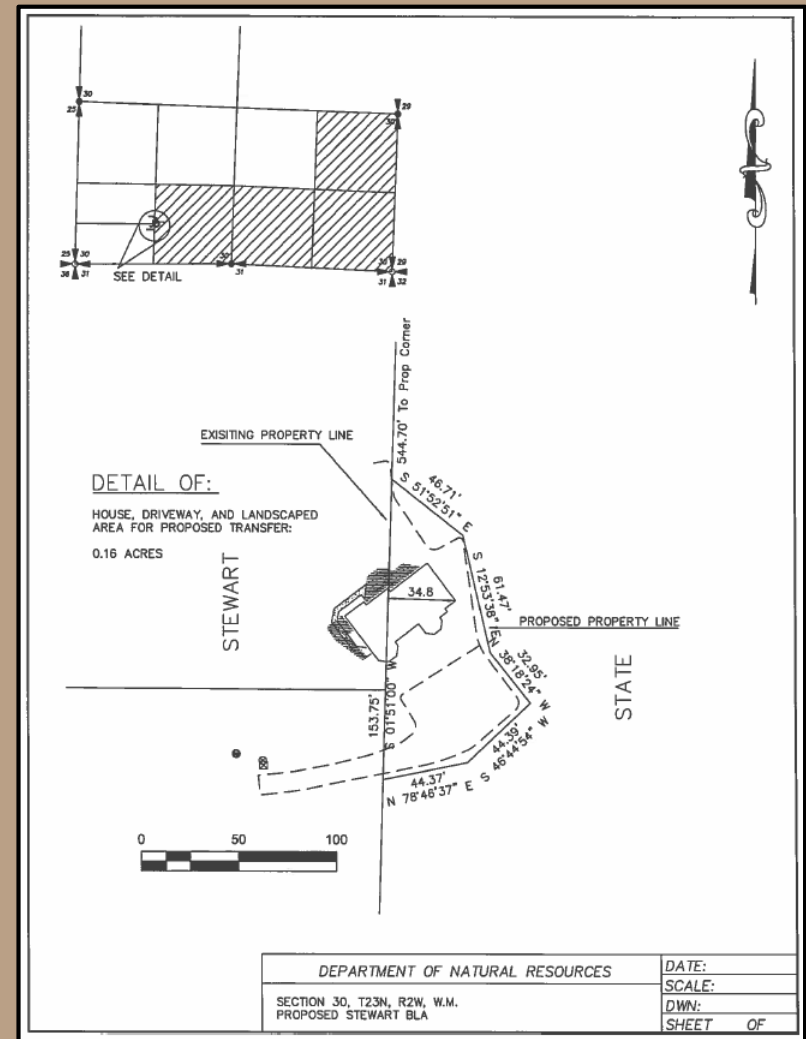
- 0.16 acre
- Mason County
- 23 miles Southwest of Bremerton
- Scientific School Trust



# Haven Lake Trespass

## Trespass

- House & Driveway encroachment
- 1950's plat erroneous
- 1980's monument located
- Current owners were unaware of trespass



# Haven Lake Trespass

## Benefits

- Resolves a trespass on Scientific School Trust land.
- Establishes a manageable boundary.
- Builds a good relationship with a neighbor.
- Proceeds will be used to purchase replacement land for the Scientific School Trust.



# Haven Lake Trespass



**Appraised  
Value:**

**\$1,500**

*\* Purchaser paying  
administrative  
costs*



# Haven Lake Trespass

## Resolution 1526



Photo taken by DNR Surveyor, Mick Sprouffske



