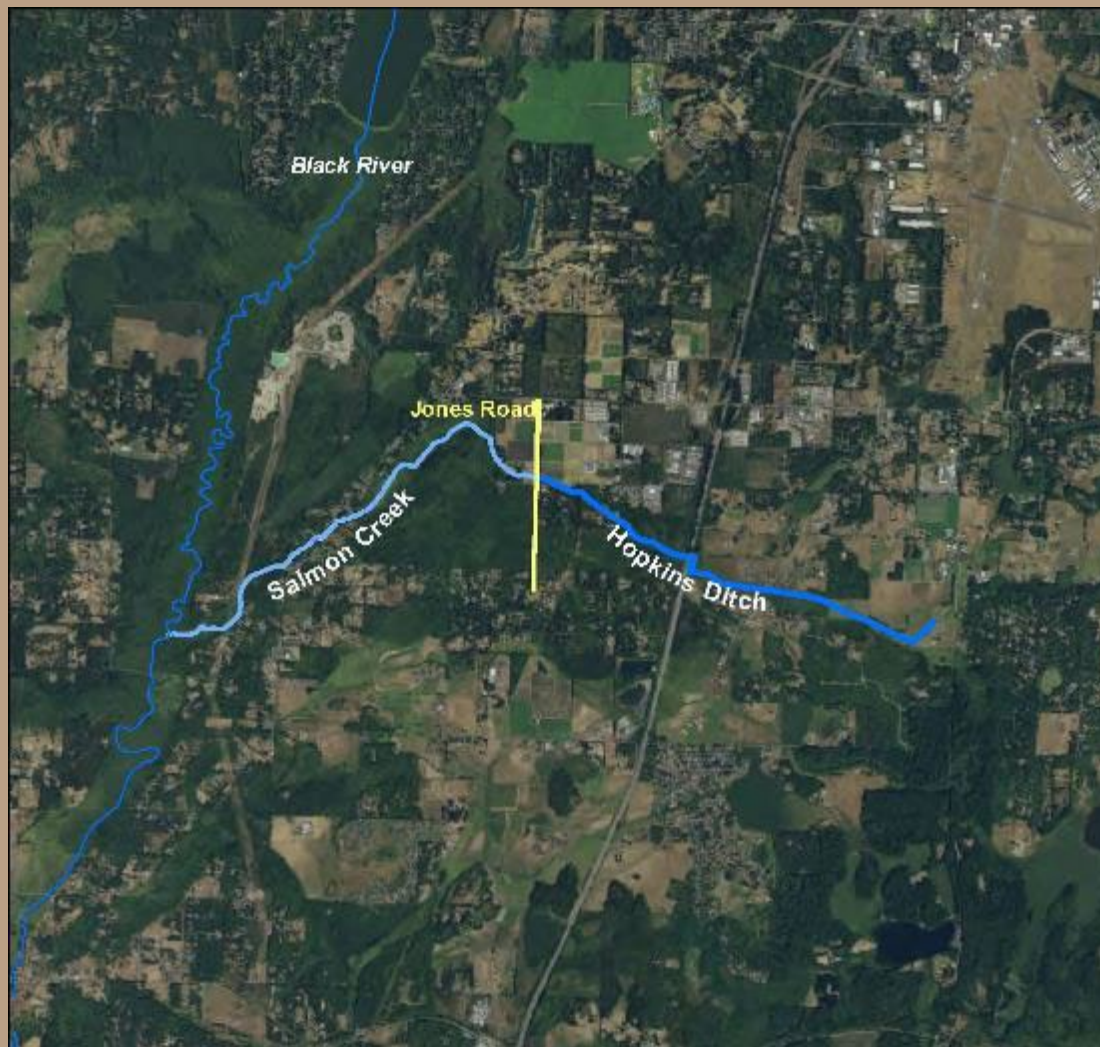




Hopkins Ditch – Thurston County



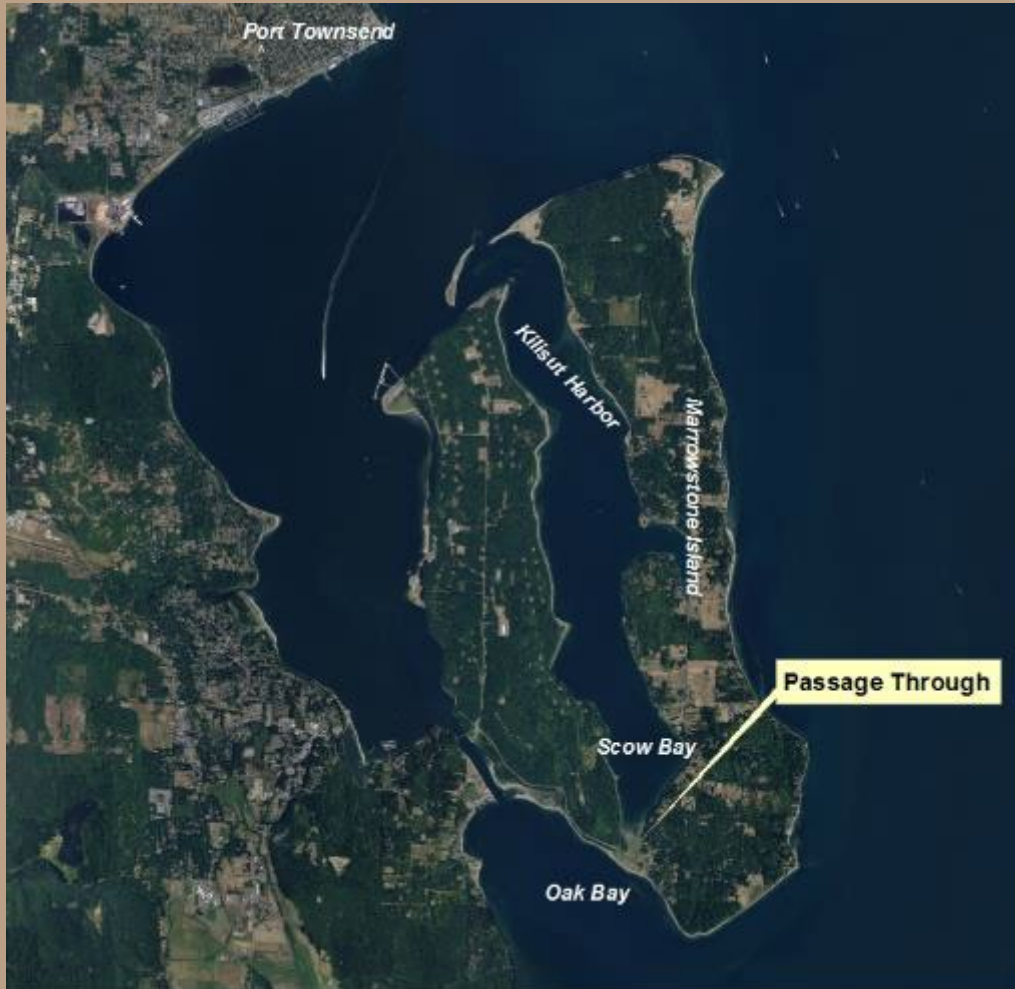
Location Clarification: The U.S. Board on Geographic Names currently shows the entire feature named Salmon Creek.

This proposal clarifies that the ditch is a man made feature flowing into Salmon Creek (at Jones Rd.) and corrects the coordinates for both features.

The ditch has been managed by a Drainage Ditch District since 1902.



Passage Through – Jefferson County



New Name: Proposed by the Port Gamble S’Klallam Tribe, Passage Through (sc̓təq^w) describes how the feature was used as a passage for canoes from Oak Bay to Scow Bay.

The feature had been blocked due to development, but has been opened up and the first canoes in over 80 years were able to pass through.



Passage Through – Jefferson County



Nosh Nosh Wahtum – Kittitas County

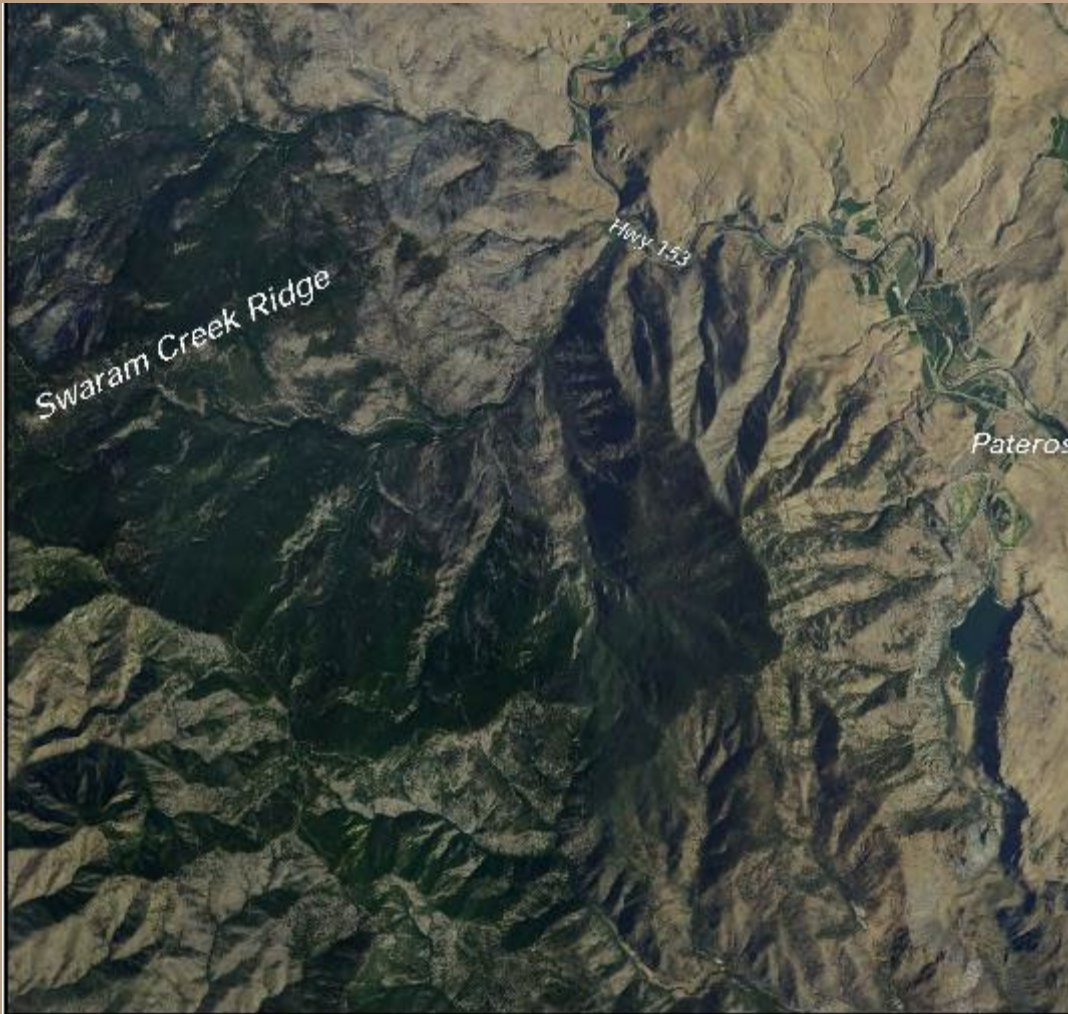


This proposed name was submitted by the Confederated Tribes and Bands of the Yakama Nation as part of U.S. Dept. of Interior's Secretarial Order 3404 to remove derogatory names.

The name means "Salamander Lake" and within the Pshwanwapum traditional territory in the Ceded Lands of the Yakama Nation.



Swaram Creek Ridge – Okanogan County



This proposed name was submitted by the Confederated Tribes of the Colville Reservation as part of U.S. Dept. of Interior's Secretarial Order 3404 to remove derogatory names.

The feature is located in the traditional area of the Methow Tribe, and the name was chosen by Elaine Timentwa Emerson, a respected tribal elder, native speaker, and instructor of Methow descent.



Masawii Lake – Chelan County



This proposed name was submitted by the Confederated Tribes of the Colville Reservation as part of U.S. Dept. of Interior's Secretarial Order 3404 to remove derogatory names.

The name was chosen by Randy Lewis, a respected tribal elder and native speaker of Wenatchi descent.



