



# Tonight's schedule

## Presentation

- Introduction
- Motivation
- Goals
- Public input and research
- Possible sites
- Potential next steps

## Listening stations

- Location feedback
- Considerations



# DNR Trust & Stewardship

DNR manages more than 5.6 million acres of state land, including 3 million acres of forest, range and agricultural trust land.

**\$151 million in FY 2016 for**

- Public school construction
- State universities and colleges
- County Services





# Recreation in DNR Managed Forests

- 2.2 million acres of forestland
- 70 campgrounds
- 55 trailheads
- 1,100 miles of trail
- 40 day-use areas
- Hunting & fishing
- Dispersed recreation





# Increasing Demand to Get Outdoors

- Growing population
- Recreation planning
- Stakeholder involvement



# WAC 332-52-145 and Target Shooting:

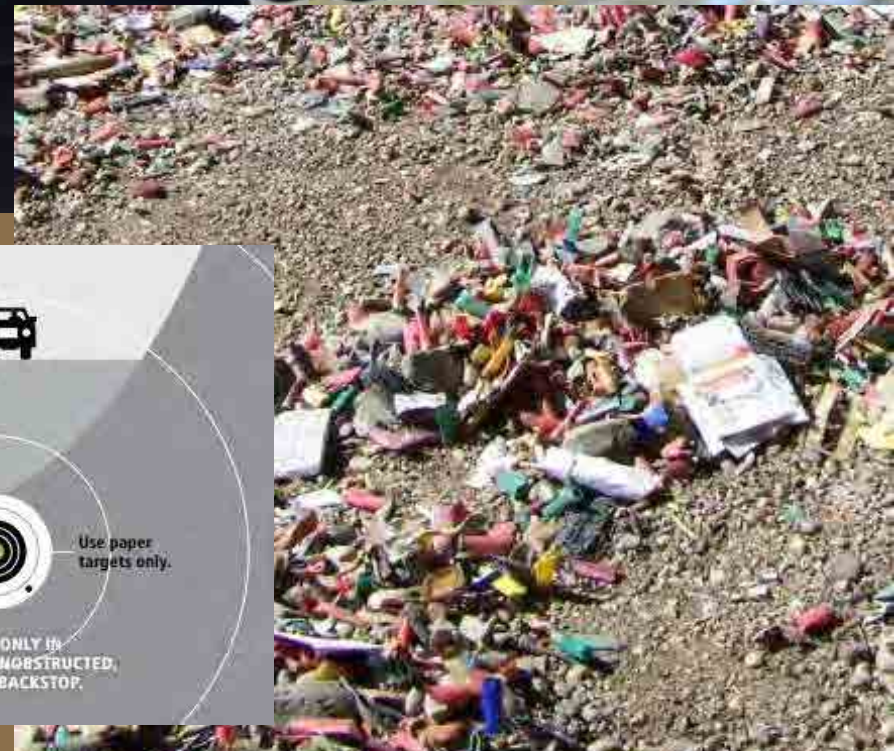
- In areas with unobstructed earth backstops that can safely stop bullets
- Never within 500 feet of a structure or recreation site, or across, along or down roads or trails
- During daylight hours, ½ hour before sunrise to ½ hour after sunset
- Not shoot in a manner that endangers or is likely to endanger people or property











## Target Shooting on DNR-managed Lands

**!** Target shooting is allowed **ONLY** in areas with an unobstructed, earthen backstop that can safely stop all projectiles and debris. Some areas may be designated or posted as "no shooting."

Pack out what you pack in. Pack out all shells, brass, paper, and other debris.

No shooting within 500 feet of a recreation site or structure.

Unless otherwise posted, target shooting is not allowed 1/2 hour after sunset to 1/2 hour before sunrise.

No shooting from across, along, or down roads or trails.

Use paper targets only.

SHOOT ONLY IN AREAS WITH UNOBSTRUCTED, EARTHEN BACKSTOP.





# DNR's Recreation Vision

Provide diverse and high-quality recreational opportunities on DNR landscapes that foster community engagement, promote a strong sense of environmental stewardship, and enrich the quality of life in Washington.



# GOALS

- Reduce real and perceived risks to forest visitors, workers and neighbors
- Reduce resource damage and need for cleanup
- Maintain opportunities for target shooting in Tahuya State Forest
- Create a desirable shooting range experience
- Generate community support
- Financially achievable to build and operate
- Strengthen stewardship



# Your Involvement

- May 2016 public meeting
- Tahuya Target Shooting E-newsletter
- Website
- Comments
- Additional involvement tonight







## Concerns we heard from public:

- Safety
- Noise
- Garbage
- Lawlessness
- Lack of clear information
- Access
- Capacity
- Impact on neighboring landowners
- Poor experience





# Opportunities we heard from public:

- Stewardship
- Cleanliness
- Signing
- Safety
- Education
- Access
- Amenities
- Experience
- Economy
- Quality time outdoors





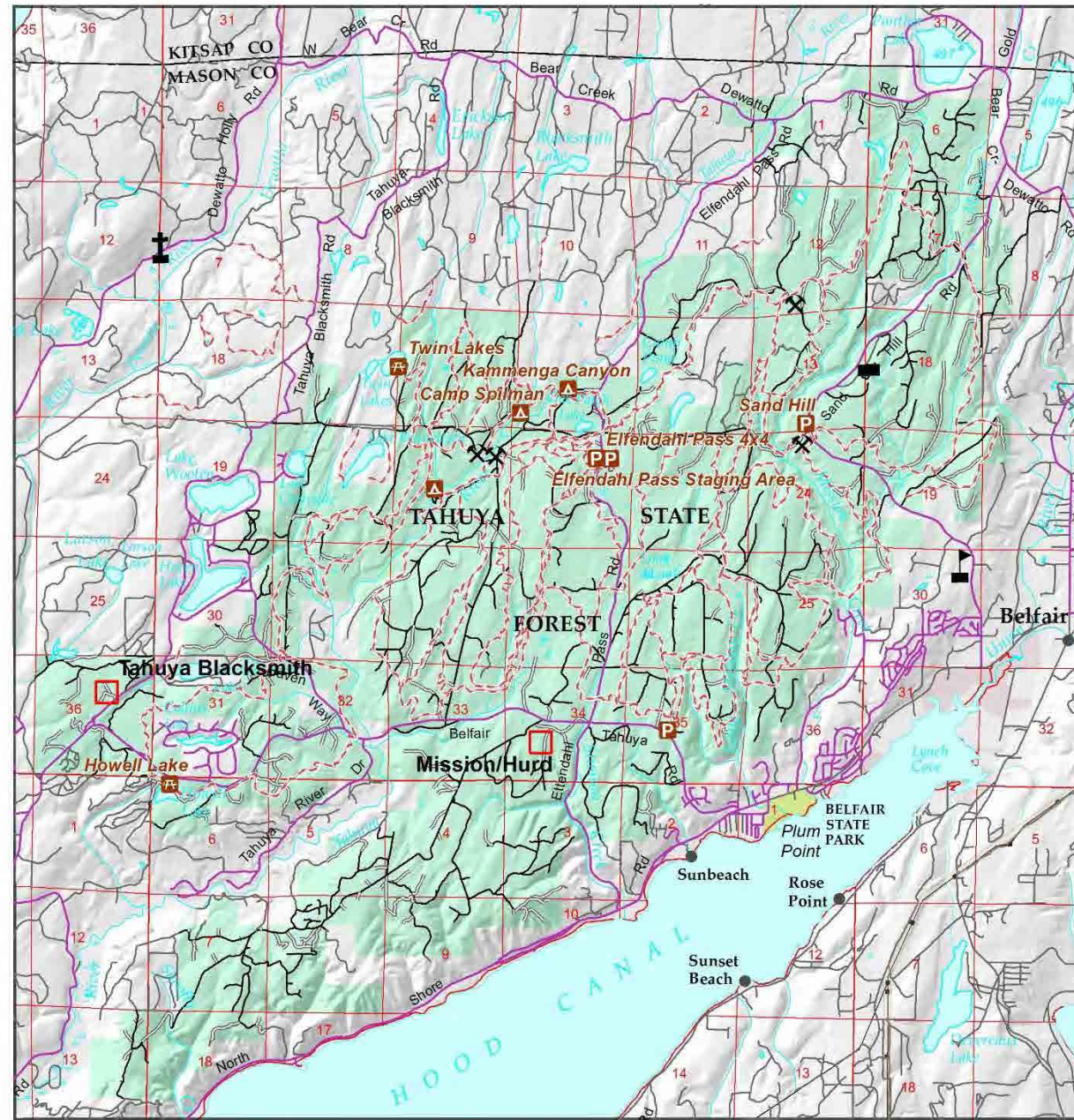
# Evaluation Considerations

- Environmental and Natural Resource protection
- Safety and noise impacts
- Experience: Accessibility and Design



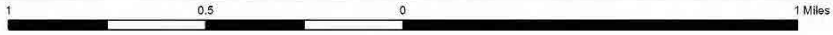
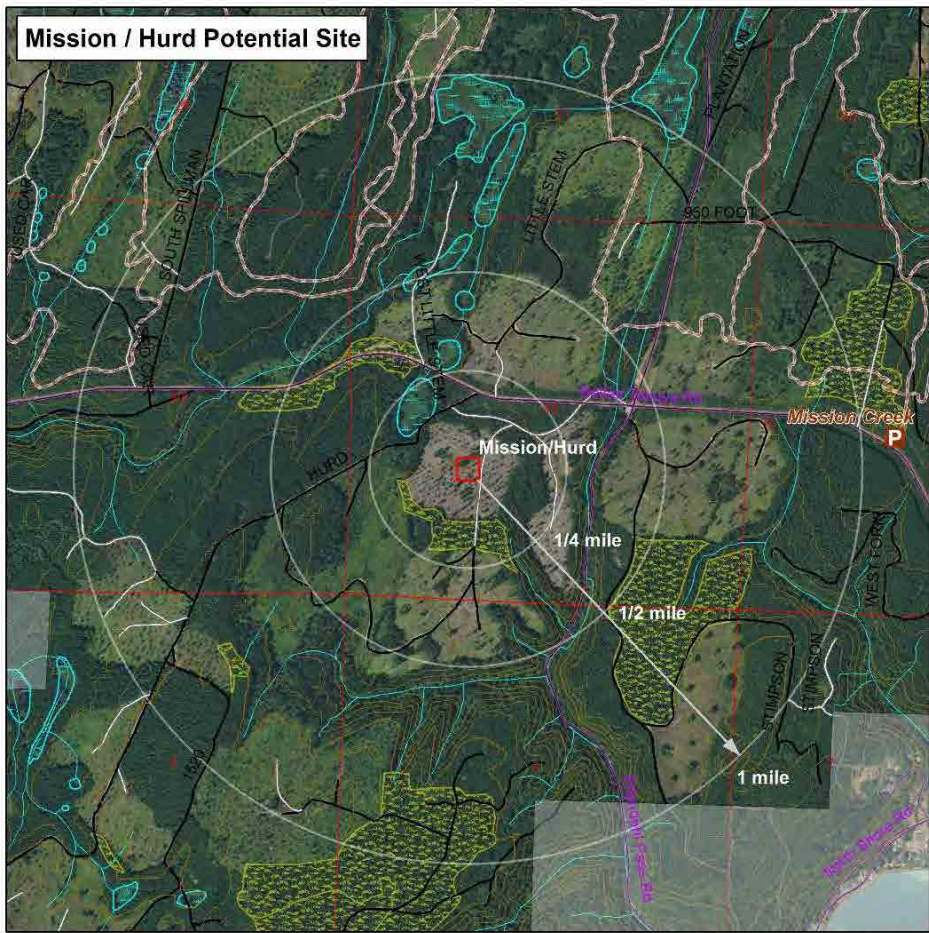


# Sites for Consideration





### Mission / Hurd Potential Site

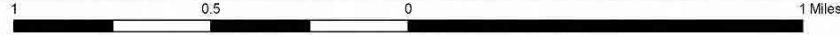
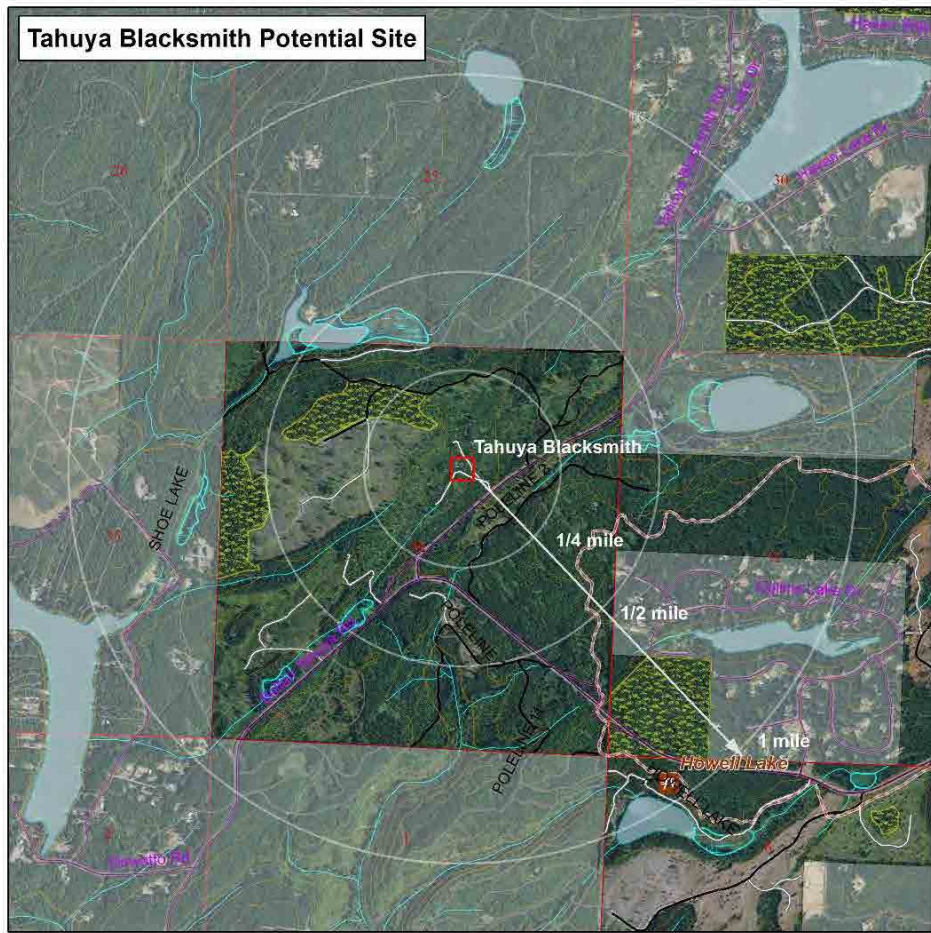


Contour interval is 40 feet

- |   |  |  |      |
|---|--|--|------|
| <b>Road Status</b><br><ul style="list-style-type: none"> <li>— Active</li> <li>— Closed, Abandoned or Pending</li> <li>— Abandonment, Decommissioned, Orphaned</li> <li>— Planned</li> <li>— Unknown</li> <li>— County Road</li> <li>— Trails</li> <li>⊗ Rockpit</li> <li>□ Potential Target Shooting Location</li> </ul> | <b>Recreation Sites</b><br><ul style="list-style-type: none"> <li>▲ Campground</li> <li>⊞ Day Use Area</li> <li>Ⓟ Trailhead</li> </ul> | <ul style="list-style-type: none"> <li>■ Planned Harvest</li> <li>■ Wet Area</li> <li>□ Non-DNR Land</li> <li>— Contours 200-foot</li> <li>— Contours 40-foot</li> </ul> | <br> |
|---|--|--|------|

**Note to Map Users:** Extreme care was used during the compilation of this map to ensure accuracy. However, due to changes in ownership and the need to rely on outside sources of information, the Department of Natural Resources cannot accept responsibilities for errors or omissions. Therefore, there are no warranties which accompany this material.

### Tahuya Blacksmith Potential Site



Contour interval is 40 feet

- |   |  |  |      |
|---|--|--|------|
| <b>Road Status</b><br><ul style="list-style-type: none"> <li>— Active</li> <li>— Closed, Abandoned or Pending</li> <li>— Abandonment, Decommissioned, Orphaned</li> <li>— Planned</li> <li>— Unknown</li> <li>— County Road</li> <li>— Trails</li> <li>⊗ Rockpit</li> <li>□ Potential Target Shooting Location</li> </ul> | <b>Recreation Sites</b><br><ul style="list-style-type: none"> <li>▲ Campground</li> <li>⊞ Day Use Area</li> <li>Ⓟ Trailhead</li> </ul> | <ul style="list-style-type: none"> <li>■ Planned Harvest</li> <li>■ Wet Area</li> <li>□ Non-DNR Land</li> <li>— Contours 200-foot</li> <li>— Contours 40-foot</li> </ul> | <br> |
|---|--|--|------|

**Note to Map Users:** Extreme care was used during the compilation of this map to ensure accuracy. However, due to changes in ownership and the need to rely on outside sources of information, the Department of Natural Resources cannot accept responsibilities for errors or omissions. Therefore, there are no warranties which accompany this material.



# Listening Stations

- Are there any considerations that are missing?
- What can you tell us about the considerations related to this site?
- What do you think the *Pros* and *Cons* are of this site?
- What design and amenities do you see working at this site?
- Is there another location in the forest that you think we should consider?





# Potential Next Steps

- Identify preferred location
- Public meeting for design and user experience
- Secure funding
- Design and construct





# Questions?

Contact us:

[dnr.wa.gov/TargetShooting](https://dnr.wa.gov/TargetShooting)

[targetshooting@dnr.wa.gov](mailto:targetshooting@dnr.wa.gov)

