

Teanaway Community Forest Recreation Planning



Tonight's Agenda

- DNR & WDFW Background
- Teanaway Community Forest
- Recreation Planning
- Community Involvement
- Question & Answer
- Listening Stations



Washington State Department of Natural Resources

PRIMARY

State Trust lands generate sustainable revenue beneficiaries.

Over \$260 million revenue in 2014 for schools, county services, and more.

SECONDARY

Provide recreational opportunities where such uses are compatible with trust objectives. Where not compatible recreation is not allowed or the trust must be compensated (i.e. developed recreation facility).





DNR's Recreation Vision:

Provide diverse and high quality recreational opportunities on DNR landscapes that foster community engagement, promote a strong sense of environmental stewardship, and enrich the quality of life in Washington.



DNR Statewide Recreation

- 160+ recreation sites
- 1,100+ miles of trails
- Boating, camping, climbing, hiking, horseback riding, mountain biking, ORVing, pleasure driving, snowmobiling, soaring, and winter activities
- 11 million annual visits



Washington State Department of Fish and Wildlife

Agency Mission:

To preserve, protect and perpetuate fish, wildlife and ecosystems while providing sustainable fish and wildlife recreational and commercial opportunities.



WDFW Goals

To achieve its mission, WDFW focuses on the following four goals:

1. Conserve and protect native fish and wildlife
- 2. Provide sustainable fishing, hunting, and other wildlife-related recreational and commercial experiences**
3. Promote a healthy economy, protect community character, maintain an overall high quality of life, and deliver high-quality customer service
4. Build an effective and efficient organization by supporting our workforce, improving business processes, and investing in technology



WDFW Plays a Key Role in the Outdoors

Each year, WDFW's 1,500 employees:

- Partner with 600 businesses to sell millions of hunting and fishing licenses
- Manage 1 million acres for habitat, hunting, and recreation at 33 wildlife areas
- Make 300,000 enforcement and public education contacts
- Manage 83 hatcheries and 700 water access sites
- Remove fish passage barriers
- Manage commercial and recreational fisheries

Teanaway and the Yakima Basin Integrated Plan

The YBIP identified the land and water of the Teanaway as:

- Key component of its habitat protection and enhancement program
- Provide major water quality and quantity benefits, and
- Protect high value fish habitat such as salmon and steelhead spawning grounds.

Community Forest Trust Enabling Legislation

CHAPTER 79.155 RCW

Findings: the conversion of commercial forest land to other uses is causing the loss of multiple benefits they provide to our communities such as local timber jobs, clean air and water, carbon storage, fish and wildlife habitat, recreation areas, and open space

Managed in accordance with a community forest management plan developed by DNR and a local advisory committee (RCW 79.155.080)

Teanaway Community Forest Legislative Direction

In approving the Teanaway purchase, lawmakers directed DNR and WDFW to:

- Protect and enhance the **water supply** and protect the **watershed**
- Maintain **working lands** for forestry and livestock grazing while protecting watershed functions and habitat
- Provide **recreational opportunities** consistent with watershed protection
- Conserve and restore **fish and wildlife habitat**
- Support a strong **community partnership** in ongoing land management



Teanaway Community Forest Advisory Committee

Lawmakers also directed DNR and WDFW to establish an advisory committee that included representatives from:

- State Department of Ecology
- Local community
- Land conservation organizations
- Yakama Nation
- Kittitas County Board of Commissioners
- Local agricultural interests.



Teanaway Community Forest Advisory Committee

The Advisory Committee includes representatives from:

- Back Country Horsemen of WA
- Local Community Members
- Evergreen Mountain Bike Alliance
- Forterra
- Friends of the Teanaway
- Kittitas County Commissioners
- Kittitas County Field & Stream Club
- Mountain to Sound Greenway Trust
- Neighboring landowners
- Off-road vehicle interests
- The Nature Conservancy
- The Wilderness Society
- Washington Department of Ecology
- Washington Trails Association
- WA State Snowmobile Association
- Yakama Nation
- Yakima Basin Integrated Plan Partner


Management Plan Process

Management plan participation



- 15 public Advisory Committee meetings
- Three open houses
- More than 1,600 online comments
- Public SEPA review process

Volunteer engagement

- Three events
- 268 donated hours of work



Teanaway
Community Forest
Management Plan



WASHINGTON STATE DEPARTMENT OF
NATURAL RESOURCES

Washington Department of
FISH and WILDLIFE

Management Plan

Recreation Objectives

- Develop a recreation plan for the forest
- Evaluate motorcycle use within the recreation planning process
- Provide a sustainable network of safe, enjoyable recreational trails
- Provide recreation opportunities and facilities that are consistent with watershed protection
- Maintain existing partnerships and establish new collaborations between public agencies, user groups, and citizen volunteers
- Establish a consistent enforcement and education presence



Recreation Planning Goals

Teanaway Specific:

- To maintain and where possible expand recreational opportunities consistent with watershed protection, for activities such as hiking, fishing, hunting, horseback riding, camping, birding, and snowmobiling.

General:

- Resource protection
- High-quality recreation experience
- Public safety



Purpose of Planning

- Develop objectives for managing recreation for next 10-15 years.
- Determine what types of recreation will be provided in the forest and where.
- Identify opportunities for connections across the landscape.
- Identify partnerships and volunteer opportunities.
- Establish priorities for implementing the plan.



Recreation Planning Committee

Estimated 2-Year Timeframe



Data Gathering

- ▶ Biological Data
- ▶ Soils/ Geology Data
- ▶ Management Data

- ▶ Field Visits
- ▶ Field Inventory of Current Use

- ▶ Public Input
- ▶ Recreation Trends
- ▶ User Survey
- ▶ Adjacent Land Uses & opportunities
- ▶ Community Input

Assessment

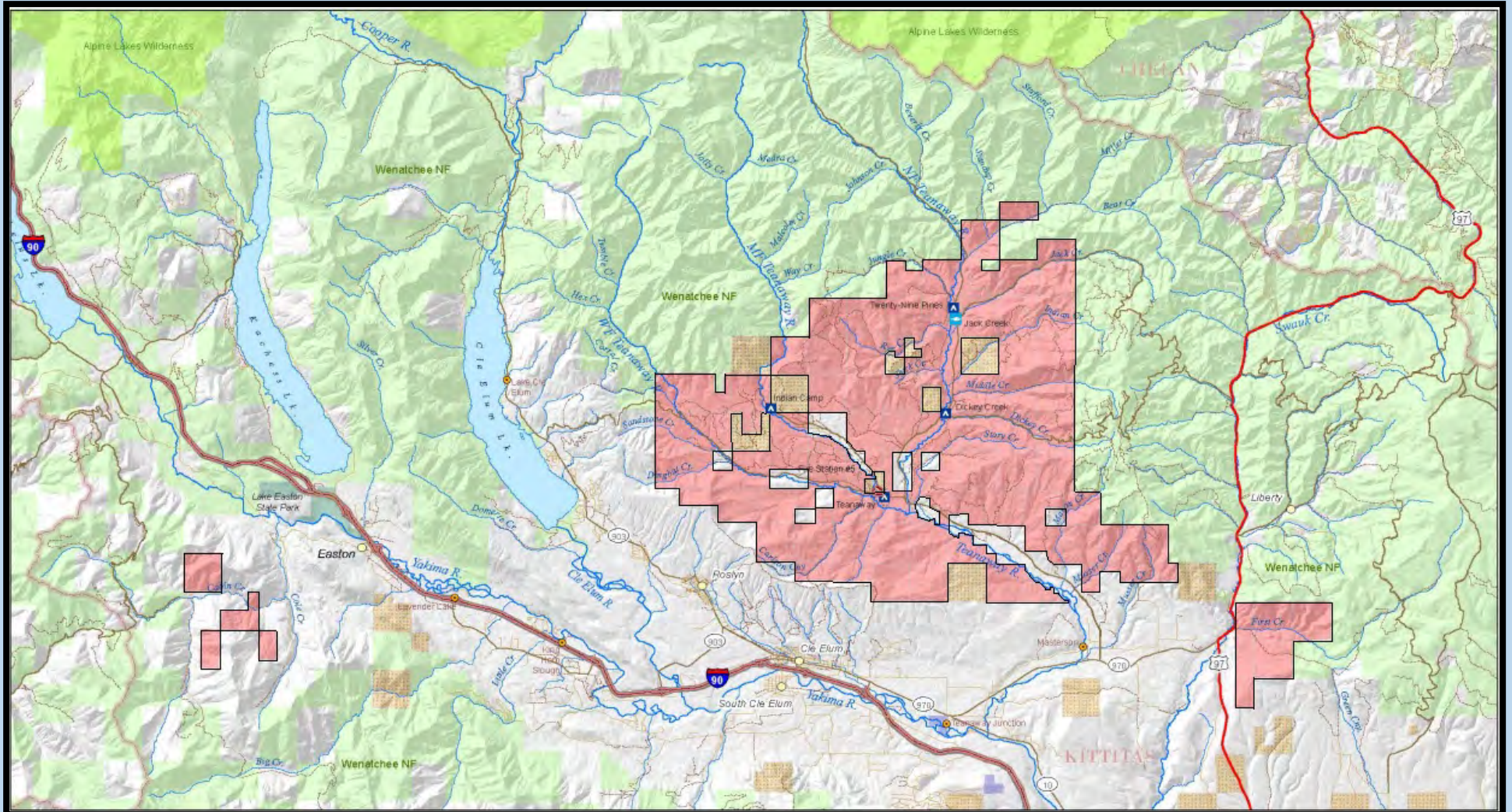
- ▶ Land Suitability Analysis
- ▶ Field Visits
- ▶ Issue Sorting from:
 - Survey Results
 - Public Meeting
 - Committee Input
 - Ongoing Public Input
- ▶ Evaluate Costs of Capital
- ▶ Development & Maintenance

Recommendations

- ▶ Committee Brainstorming
- ▶ Preliminary Recommendations
- ▶ Develop/Review Draft Recreation Concept Plans
- ▶ Prioritize Implementation Timeline
- ▶ Final Concept Plan
- ▶ Committee Recommendation



Community Forest Map



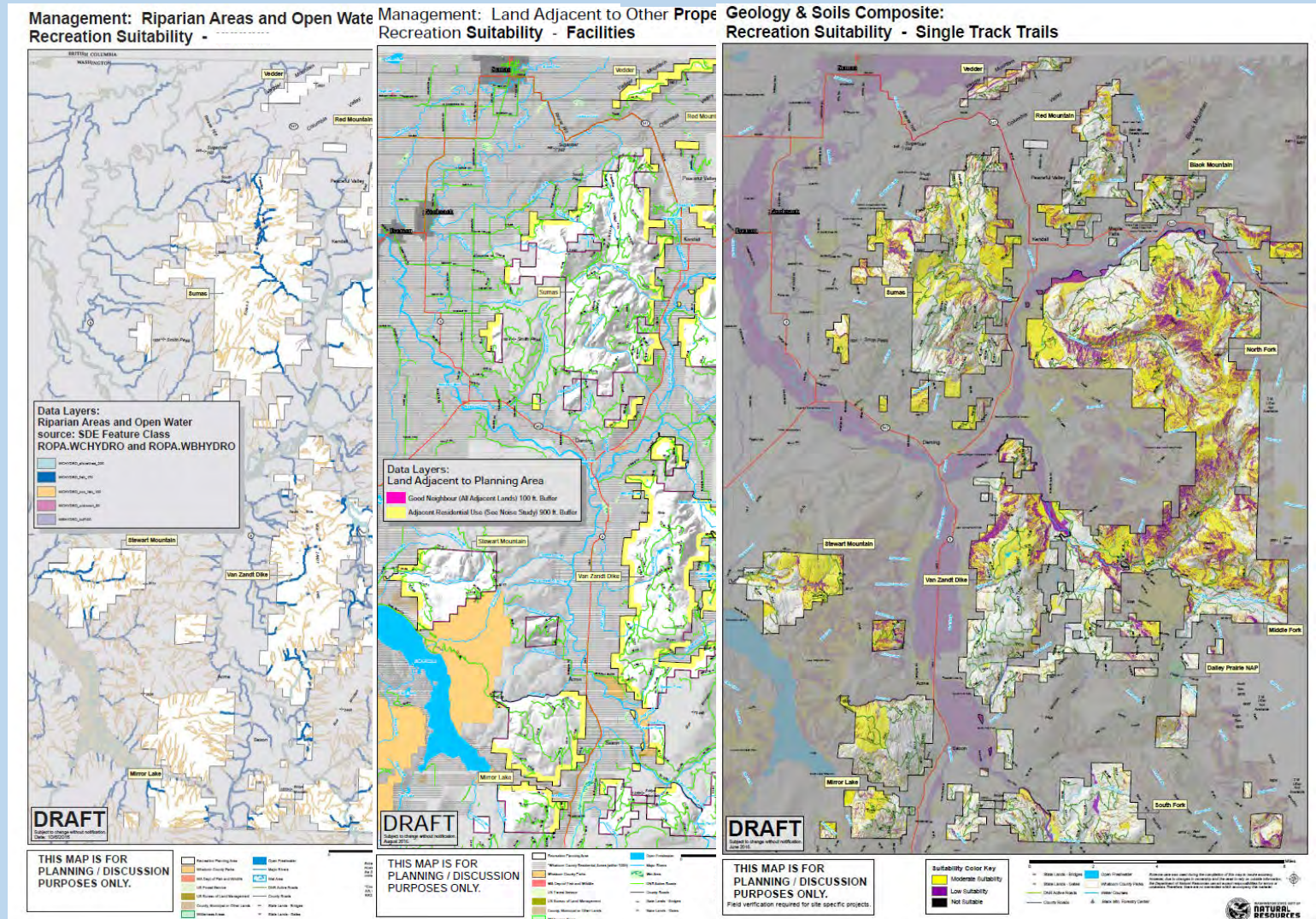
Land Suitability Assessment

- Riparian areas, wetlands & other habitats
- Streams (fish-bearing & non-fish bearing)
- Soils & slope steepness
- Geologic features and landslide hazards
- Wildlife habitat
- Sensitive, threatened & endangered species
- Utility easements & communication sites



Recreation Land Suitability

Biology
Geology/Soils
Management



Maps guide recreation planning efforts

Deliverables

- Recreation Development & Management Objectives
- Preferred Recreation Alternative Plan
- Recreation Strategies
- Prioritized Implementation Plan

How to Participate ?

- Recreation planning committee meetings
- Meet members of the Advisory Committee
- Web page: www.dnr.wa.gov/TeawayRec
- E-mail updates
- Online survey
- Contact us: teawayrec@dnr.wa.gov
- SEPA public environmental review

Listening Stations

- Types & Locations of Recreation in the Teanaway
- Recreation and the Environment
- Recreation and the Community
- Partnership Opportunities
- Vision and Values

Questions?

