

# Kittitas County Field and Stream Club

Est. 1919



**Our Mission:**  
**To preserve the outdoor heritage of our  
county for the enjoyment of future  
generations.**

**We are an all-volunteer, 501c3 non-profit group promoting  
effective conservation, teaching hunting ethics and  
good sportsmanship, supporting education to prevent  
pollution,  
and improving and increasing outdoor recreation  
opportunities,  
especially hunting and fishing.**

# Hunter Education:

Teaching sportsmanship, hunter ethics,  
firearms safety and conservation since  
1960





**12 hours of classroom instruction,  
and one day on the range**

# Durr Road Clean-up on the WDFW Wenas Wildlife Area





THIS AREA **CLOSED**  
TO TARGET SHOOTING  
ON **SATURDAY**  
FOR WILDLIFE AREA  
LITTER CLEAN UP

A cooperative project between:  
Kittitas County Field & Stream Club  
Washington Department of Fish & Wildlife  
Ellensburg Waste Management  
Kittitas County Solid Waste

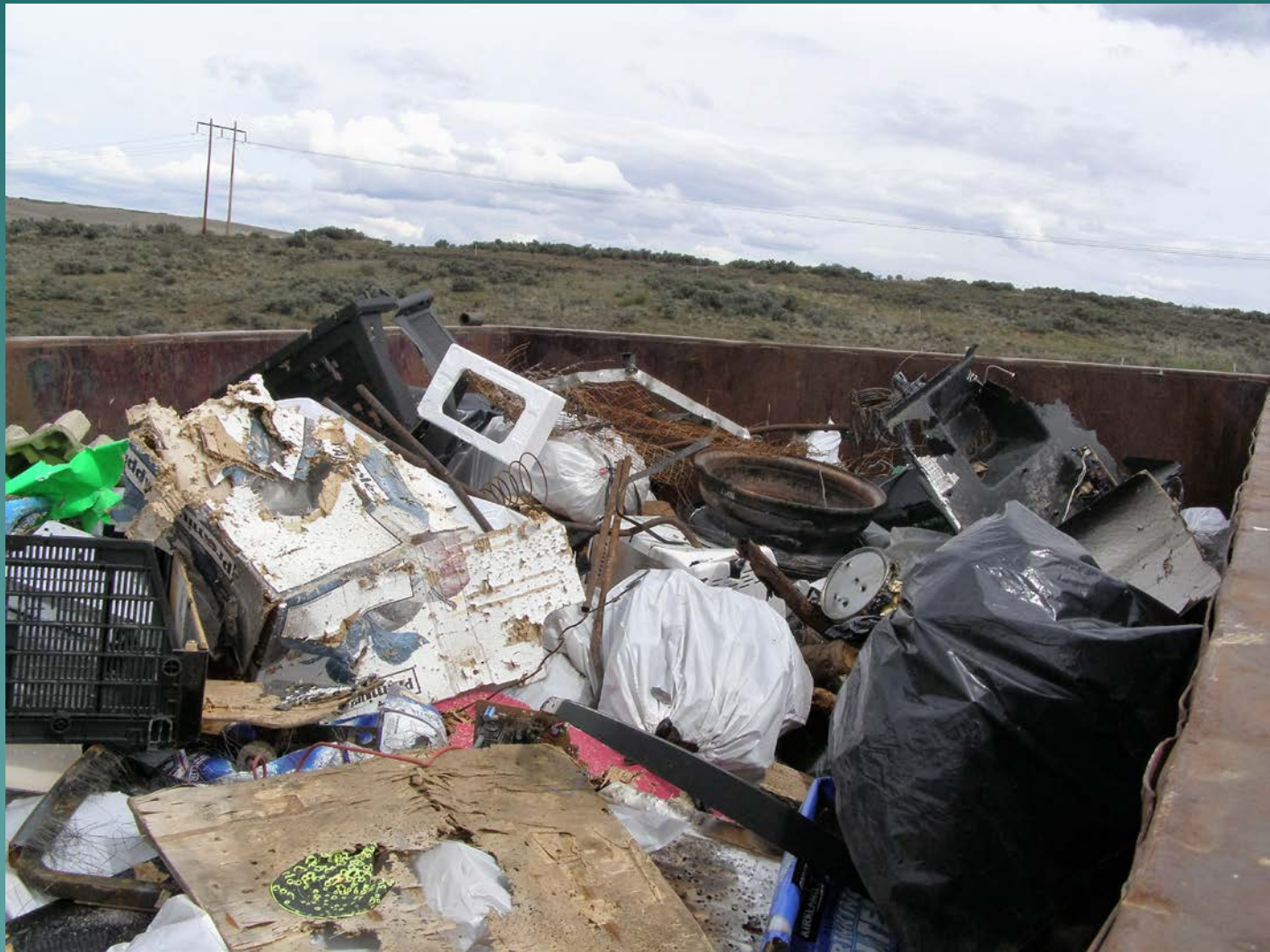
RESPECTED  
IS OPEN **ACCESS**



HELP US PUT AN END  
TO TRIGGER TRASH



**Our annual event for the past 16 years,  
volunteers have removed over 2 tons of  
trash each year.**







Washington  
Department of  
**FISH and  
WILDLIFE**

**Kittitas County  
Field and Stream Club**



2016

**Volunteer Organization  
of the Year**

**15 years of Clean Up  
at Durr Road**



Don't leave your line behind!

This is one of three collection points installed at Fiorito Lake last summer as an eagle Scout project sponsored by the club.



# Political Activism





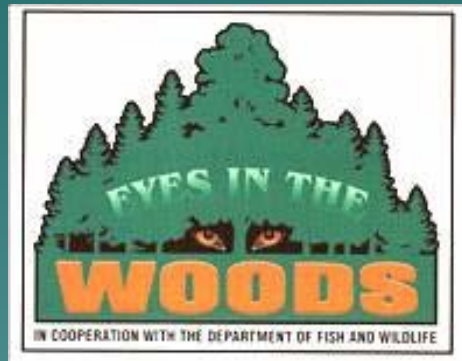
## Ellensburg School District's 5<sup>th</sup> Grade Camp:

I have been teaching about wildlife at 5<sup>th</sup> Grade Camp for over 20 years. The club donated \$2250 over 5 years to fund the camp when the school district was unable to fund it.



\$1,500 Scholarship:

Every year the club offers a scholarship to a deserving High School Senior from Kittitas County who is planning to major in Wildlife Enforcement or Wildlife Management.



We joined “Eyes In The Woods” and hosted our first CORT class in 2005.  
Learn more about EIW at [www.eyesinthewoods.org](http://www.eyesinthewoods.org).



Sponsor and lead field trips  
for the  
Kittitas Environmental  
Education Network



Our club members serve on many different committees and support other like-minded organizations:

Tread Lightly

Washingtonians for Wildlife Conservation

Eyes in the Woods

Naneum to Columbia Recreation Advisory Committee

Teaway Community Forest Advisory Committee

WDFW Wenas WLA Target Shooting Advisory Committee

Kittitas Environmental Education Network

WDFW L.T. Murray WLA Advisory Committee

Wildhorse Windfarm Technical Advisory Committee

Kittitas County Board of Commissioner's Public Lands Advisory Committee

WDFW Game Management Advisory Committee

WDFW Wolf Advisory Committee

WDFW Colockum WLA Advisory Committee

WDFW Wenas WLA Advisory Committee





Partnered with KEEN and Boy Scout Troop 400 to build 4 fishing platforms at Helen McCabe State Park.





# HUNTER BREAKFAST

★ PRESENTED BY PUGET SOUND ENERGY & KITTITAS COUNTY FIELD AND STREAM CLUB ★

FRIDAY OCTOBER 30<sup>TH</sup> ★ 7 AM - 10 AM

## FREE BREAKFAST & HOT COFFEE

Please join Puget Sound Energy and the Kittitas County Field & Stream Club for breakfast at the Wild Horse Renewable Energy Center.

Register for a permit to hunt on the wind farm. For more information call:  
**[509] 964-7815**

Puget Sound Energy's Wild Horse Wind and Solar Facility is located on 11,000 acres of rangeland in Game Management Unit 329, 16 miles east of Ellensburg. While this land is open to hunting and recreation, weather permitting, April through November, special rules apply to ensure the safety of wind-facility workers, visitors, hunters, and local residents.

To register for a permit, visit PSE's Renewable Energy Center at Wild Horse or sign up online at [PSE.com/WildHorse](http://PSE.com/WildHorse). For more information on recreational access, hunting and site closures, visit [PSE.com/WildHorse](http://PSE.com/WildHorse) or call PSE at (509) 964-7813 or (509) 964-7815.



Stay Connected to PSE @ [PSE.com/WildHorse](http://PSE.com/WildHorse)  
facebook | twitter | vimeo | youtube | flickr

Renewable Energy Center  
25901 Vantage Highway, Ellensburg, WA  
Open daily 9am - 5:30pm, April 1 - Nov. 30

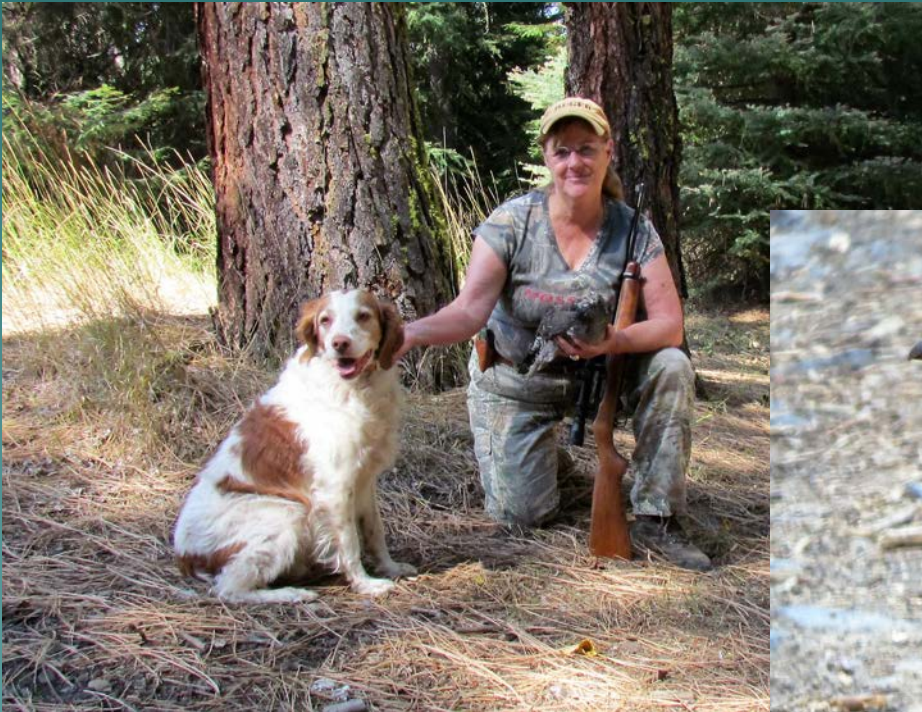


# Teaway Community Forest

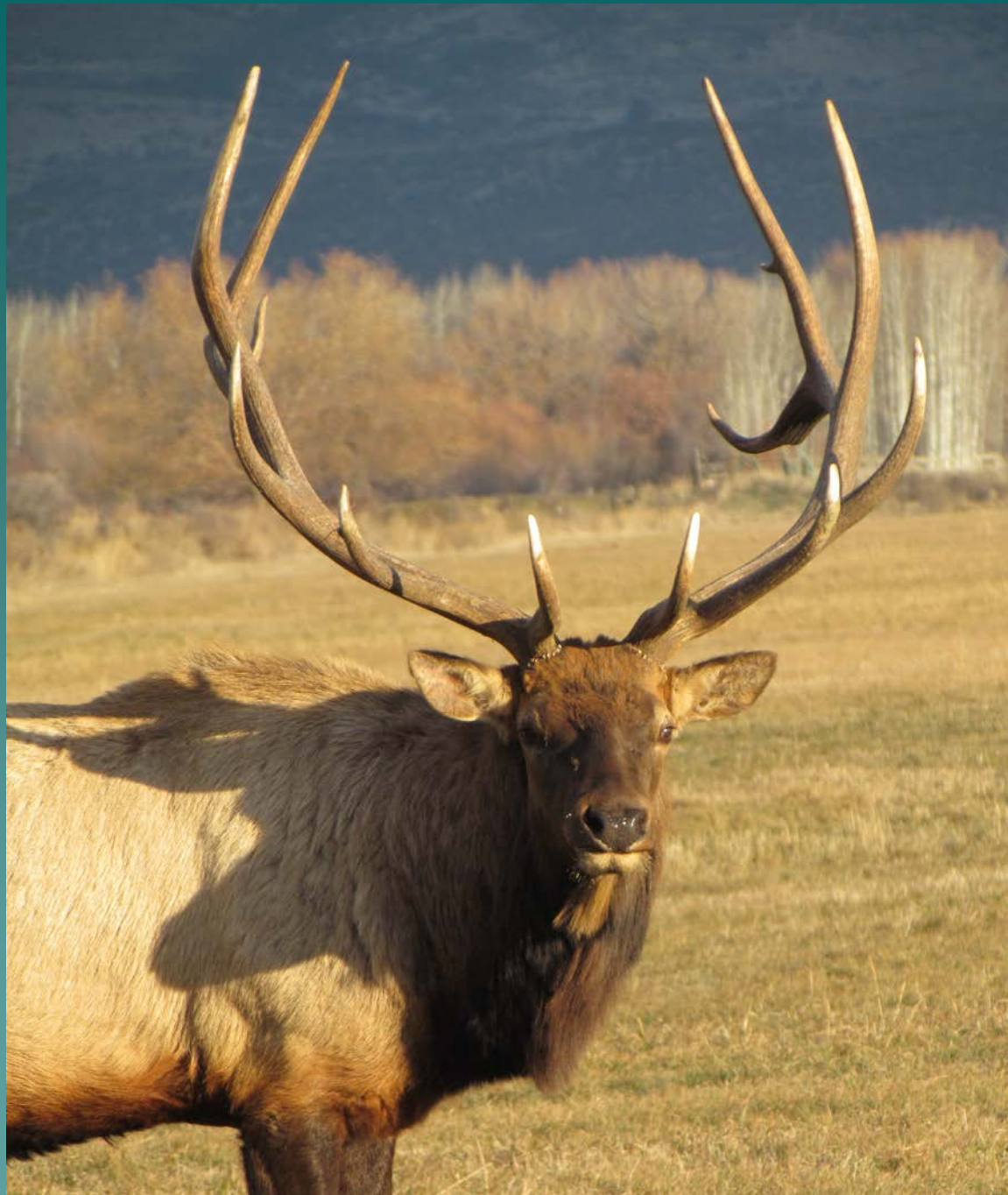




# Hunting








# Birding







## KCFS recommends:

- Opening Dickey Creek Road for licensed motor vehicles for egress to the east and access to USFW.
  - Open a route to the west for licensed motor vehicles for egress to Lake Cle Elum area.
- 



© William R. Essman

**The End**