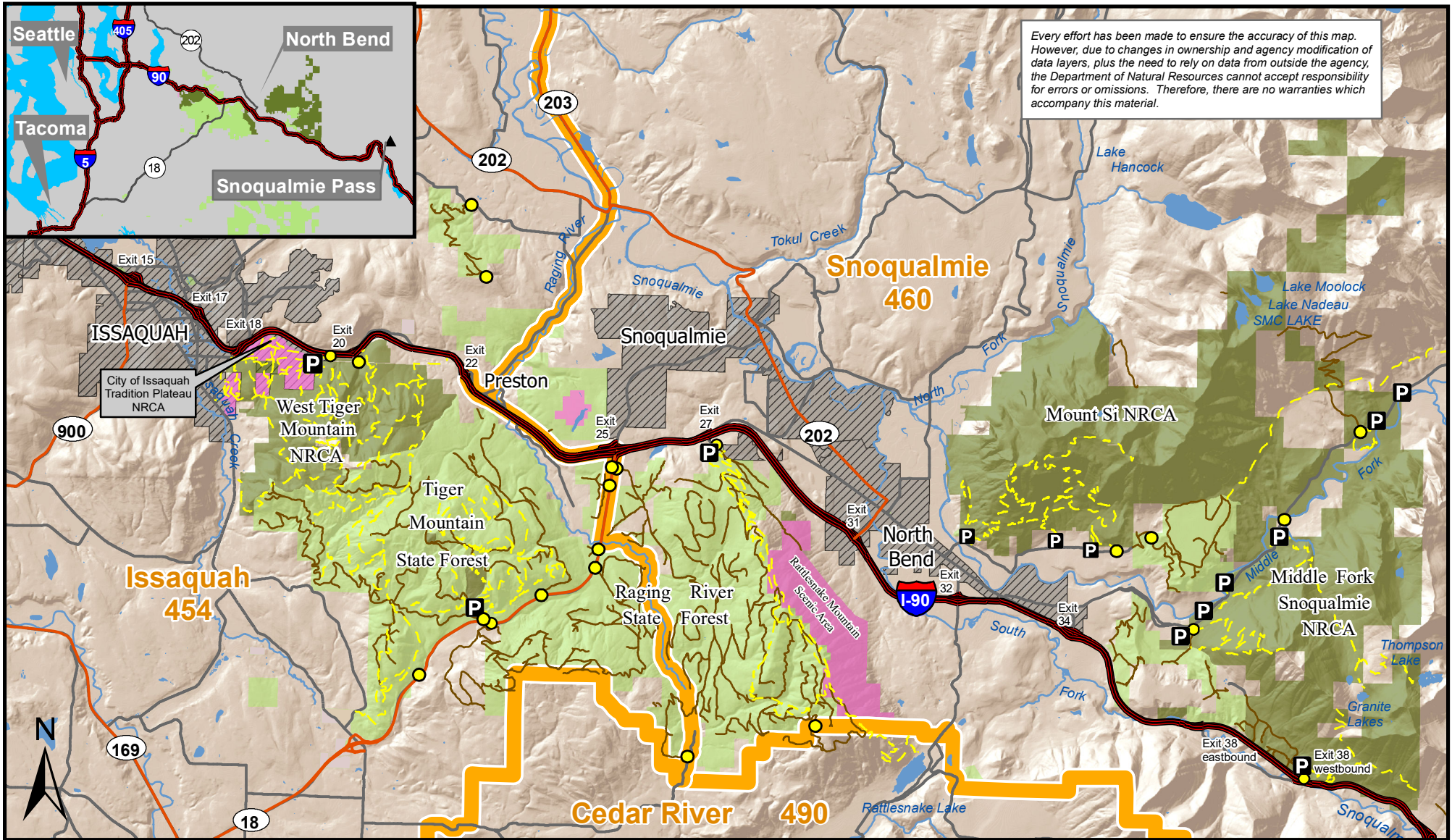


# SNOQUALMIE CORRIDOR HUNTING April 2019 - March 2020 Season



Every effort has been made to ensure the accuracy of this map. However, due to changes in ownership and agency modification of data layers, plus the need to rely on data from outside the agency, the Department of Natural Resources cannot accept responsibility for errors or omissions. Therefore, there are no warranties which accompany this material.

For the most up to date information regarding hunting regulations, seasons, rules and firearm restrictions refer to the WA Department of Fish and Wildlife Hunting Website (<http://wdfw.wa.gov/hunting/regulations>) Big Game Hunting Seasons & Rules Pamphlet, effective April 1, 2019 - March 31, 2020, and any subsequent corrections and updates.

To contact WDFW North Puget Sound - Region 4  
Telephone (425) 775-1311  
Fax (425) 338-1066  
or email [TeamMillCreek@dfr.wa.gov](mailto:TeamMillCreek@dfr.wa.gov)

- WDFW Game Management Units
- WA DNR Roads closed to unauthorized motor vehicles
- Gates closed to unauthorized motor vehicles, gates interior to WA DNR lands not shown
- Trailhead/Parking Access
- WA DNR Managed Lands
- WA DNR Managed Natural Resources Conservation Areas (NRCA)
- No Hunting Allowed
- City Limits (2010)

- High Use WA DNR Trails  
Attention - not all open trails are depicted on this map
- Please use extreme caution near high use recreational areas. DO NOT discharge firearm on or across roads and trails.

CS SPS Region 8/20/2019

