

TRUST LAND TRANSFER PROVISIO

PUBLIC MEETING

AUGUST 11, 2021

What is Trust Land Transfer (TLT)?

An innovative tool for the Washington State Legislature, through an appropriation to DNR, to address several trust land management needs of the Common School Trust:



- Transfer out of economically under-performing state trust lands;
- Acquire funds to purchase replacement lands with higher long-term income producing potential;
- Direct funds to the K-12 Common School Construction Account; and
- Conserve lands that have high ecological or social values.

Legislative Proviso Language

As part of the 2021-23 Capital Budget, the Washington State Legislature passed a budget proviso specific to trust land transfer (SHB 1080 Sec. 3333).

Work Group

“(1)The department of natural resources shall convene a work group of trust land beneficiaries and stakeholders to develop a recommended process for the way trust land transfer proposals are developed and implemented.

Considerations

Consideration should be made for increasing the income value of the trusts, limiting impacts to trust lands not being considered for transfer, conservation value of lands that are a potential candidate for transfer, and use of the land bank for securing repositioned land that would result from any transferred projects, and any other items necessary for a well-supported program.

DNR Tasks

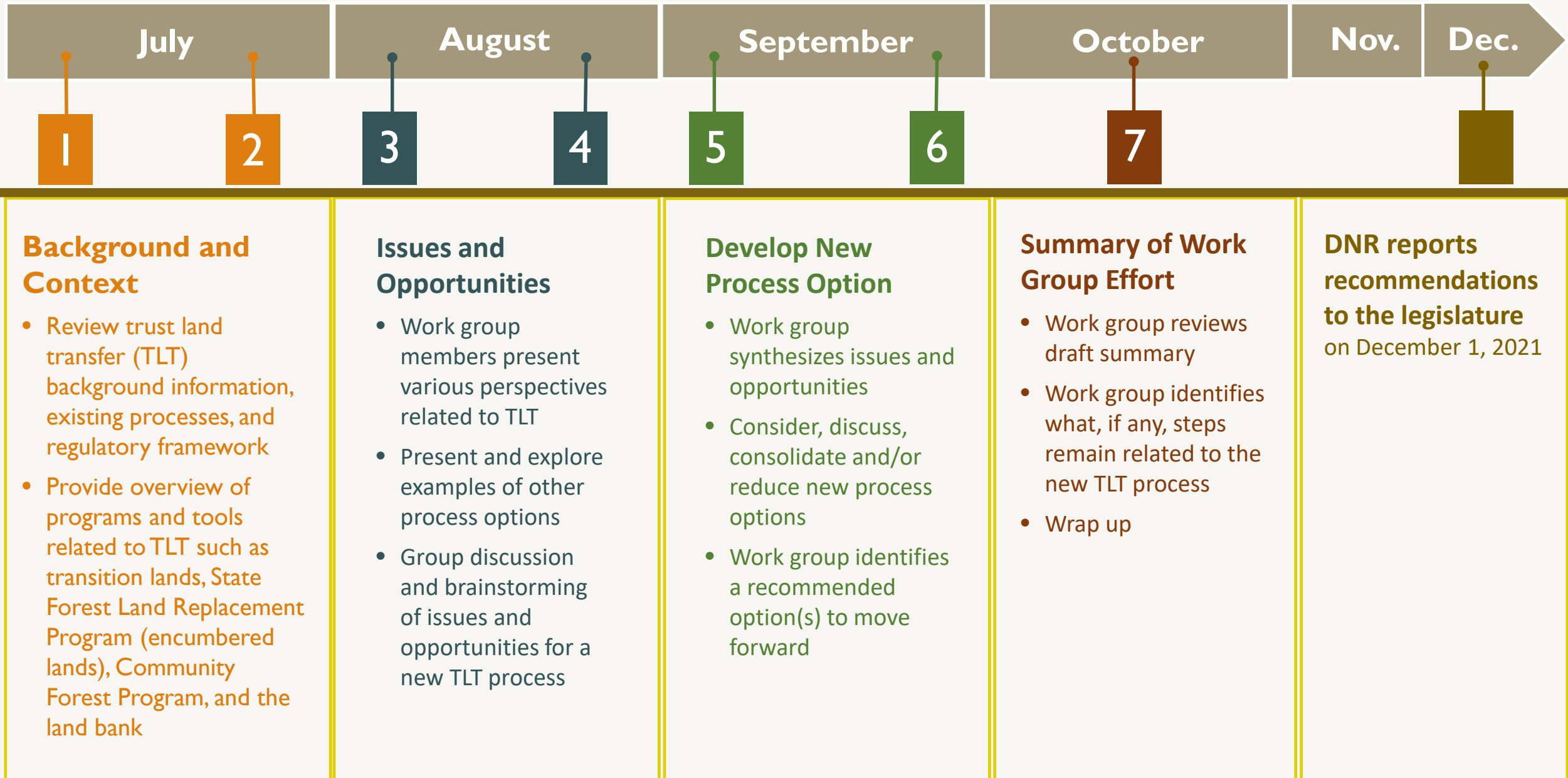
The department of natural resources must report and make recommendations for the establishment of a new trust land transfer program to the fiscal committees of the legislature, by December 1, 2021.

(2) For the 2021-2023 fiscal biennium, the department of natural resources may not trade, transfer, or sell any valuable material from the four parcels that comprised the proposed trust land transfer parcels in the 2019-2021 fiscal biennium, known as Blakely Island, Devils Lake, Eglon, and Morning Star.

WORK GROUP MEMBERS

Name	Organization
Justin Allegro	The Nature Conservancy
Angus Brodie	Department of Natural Resources
Matt Comisky	American Forest Resource Council
Commissioner Heidi Eisenhour	Jefferson County
Jim Freeburg	North Cascades Conservation Council
Commissioner Rob Gelder	Kitsap County
Peter Herzog	Washington State Parks and Recreation Commission
Commissioner Randy Johnson	Clallam County
Randy Newman	Office of the Superintendent of Public Instruction
Russ Pfeifer-Hoyt	Washington State School Director's Association
Cynthia Wilkerson	Washington Department of Fish and Wildlife

TLT Proviso Work Group Timeline



Background and Context

- Review trust land transfer (TLT) background information, existing processes, and regulatory framework
- Provide overview of programs and tools related to TLT such as transition lands, State Forest Land Replacement Program (encumbered lands), Community Forest Program, and the land bank

Issues and Opportunities

- Work group members present various perspectives related to TLT
- Present and explore examples of other process options
- Group discussion and brainstorming of issues and opportunities for a new TLT process

Develop New Process Option

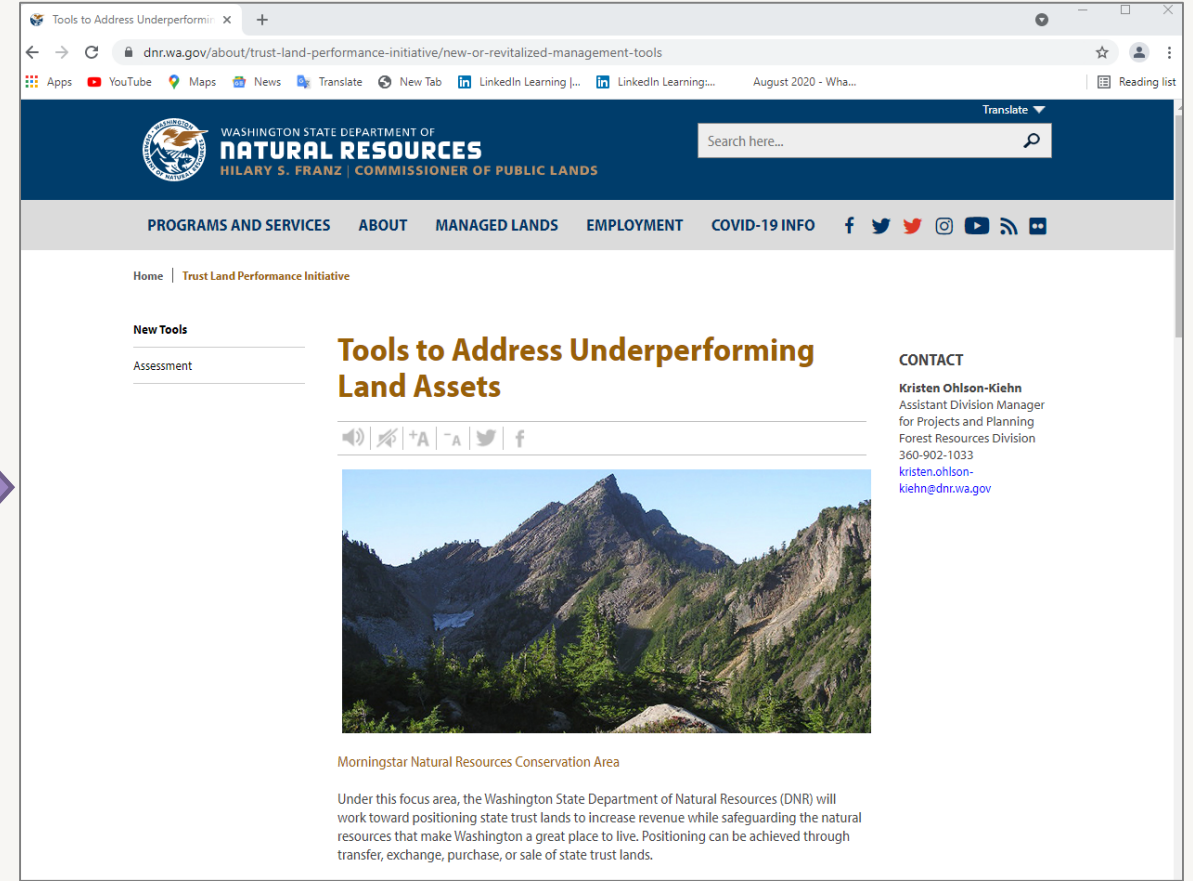
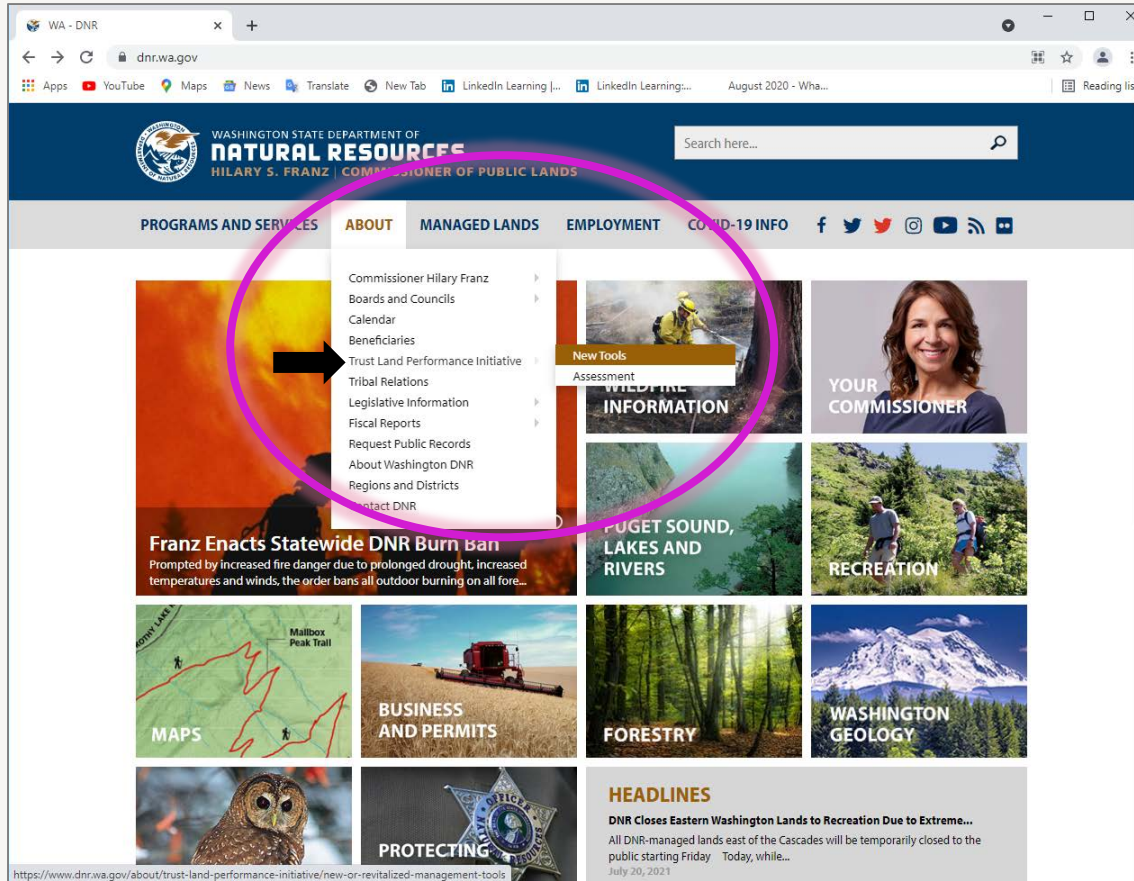
- Work group synthesizes issues and opportunities
- Consider, discuss, consolidate and/or reduce new process options
- Work group identifies a recommended option(s) to move forward

Summary of Work Group Effort

- Work group reviews draft summary
- Work group identifies what, if any, steps remain related to the new TLT process
- Wrap up

DNR reports recommendations to the legislature on December 1, 2021

Where can you find more information?



<https://www.dnr.wa.gov/about/trust-land-performance-initiative/new-or-revitalized-management-tools>

QUESTIONS?



WANT TO SUBMIT A COMMENT?

1. Go to the DNR “Trust Land Performance Initiative - New Tools” webpage at:

<https://www.dnr.wa.gov/about/trust-land-performance-initiative/new-or-revitalized-management-tools>

Near the bottom of the page, under the Public Meeting heading, there will be a link to submit comments

The survey link will be active until 6:00 pm on Wednesday, August 25, 2021

2. Go directly to the Survey Monkey Link at:

<https://www.surveymonkey.com/r/L29M5YC>