



Sultan

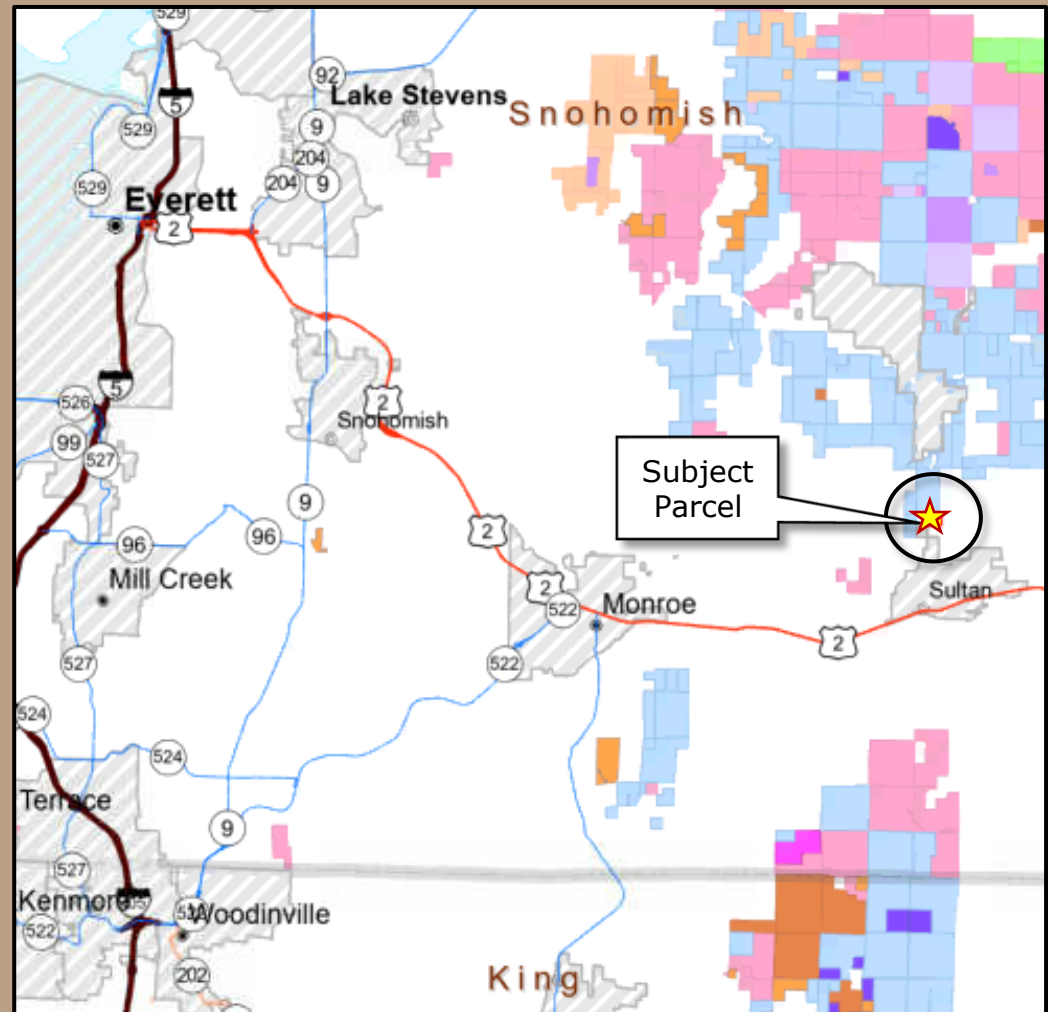
PROPOSED DIRECT TRANSFER Snohomish County



Sultan Direct Transfer

Vicinity

- 49.46 acres
- Common School Trust
- 20 miles east of Everett
- North of Sultan
- Snohomish County
- Proposed transfer to Sultan School District #311



Sultan Direct Transfer

Purpose & Authority

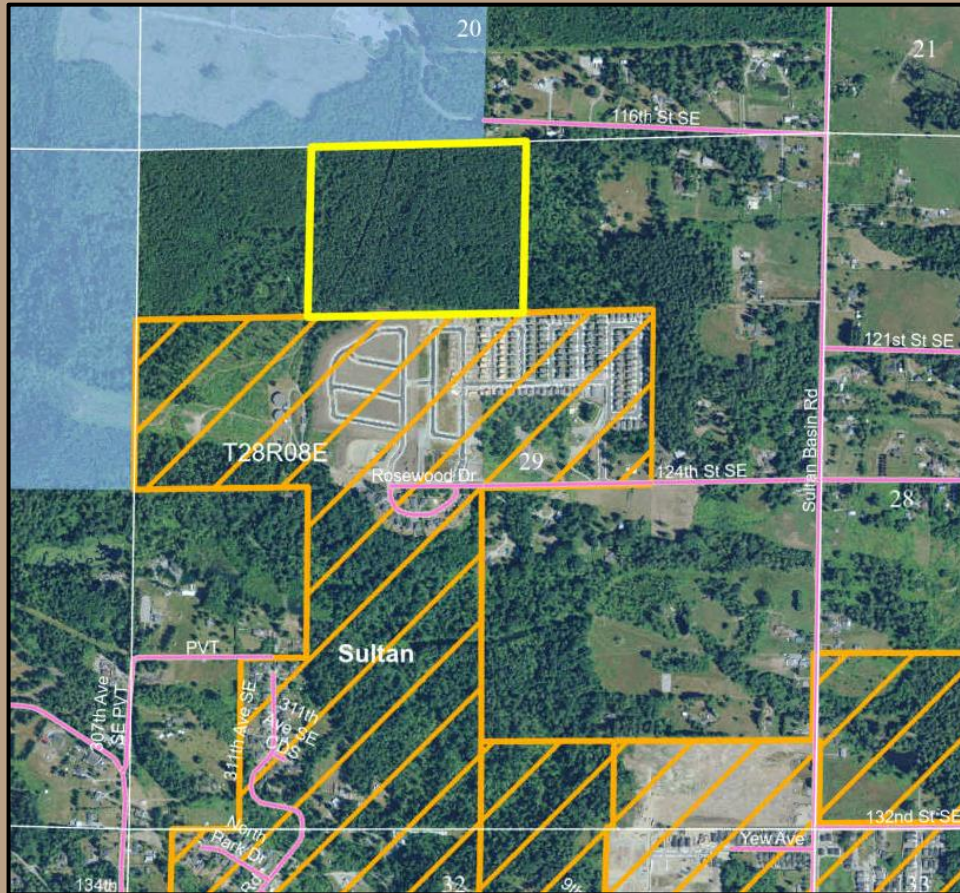
- Sultan School District #311 will use the property to expand district facilities.
- **RCW 79.17.200** provides for Direct Transfers of public lands to public agencies without a public auction, after appraisal, and for at least fair market value.



Sultan Direct Transfer

Property

- Douglas Fir (33–60 Yr)
- Site Class II & III
- Zoned R-5
- Private ownership on three sides
- Abuts the City of Sultan Urban Growth Area



- Subject Property
- City of Sultan Urban Growth Area
- State Forest Transfer Trust Property

Sultan Direct Transfer

Appraised Value

\$455,000

- Administrative costs paid by Sultan School District #311
- Proceeds will go to the Real Property Replacement Account



Sultan Direct Transfer

Benefits

- Facilitates repositioning a trust asset to lands better suited for long-term revenue production.
- Proceeds will be used to purchase replacement land for the Common School Trust.
- Provides expansion capability for Sultan School District #311.



Sultan Direct Transfer

Resolution 1629



Photo NW site area taken by DNR Appraiser John Wooden



