



Stemilt 2

Direct Transfer

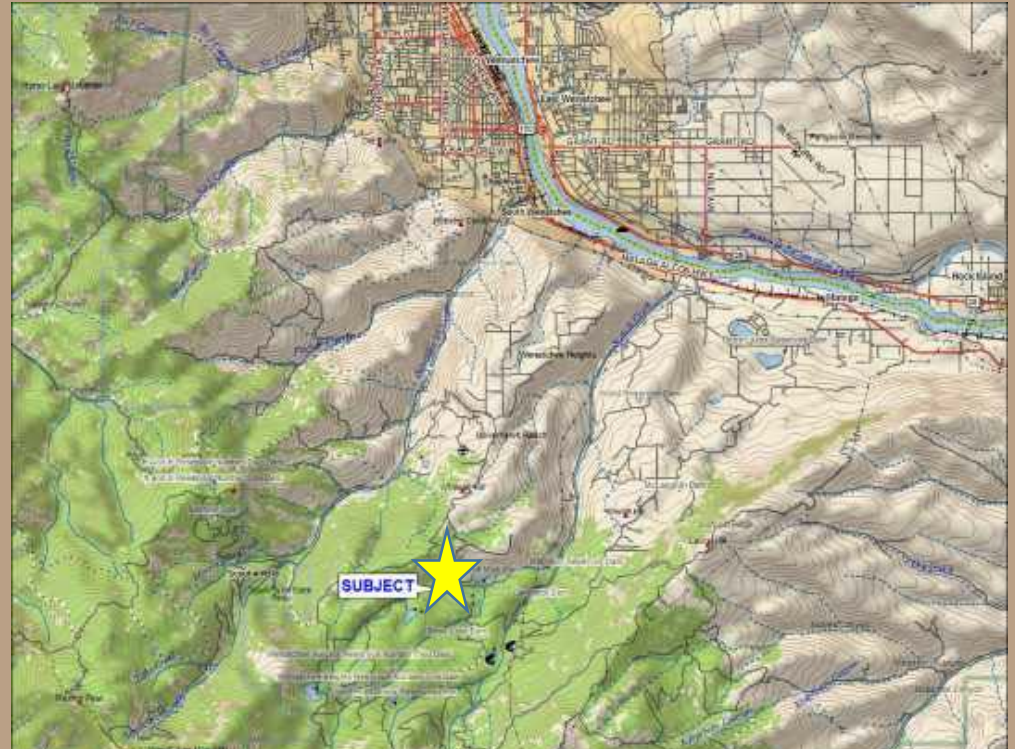
DNR to WDFW



Stemilt 2 Transfer

Location

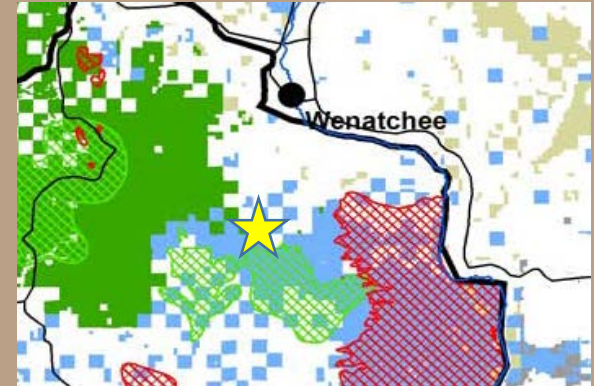
- Chelan County
- Transition Area –
Shrub/Grass To Forest
- Higher elevation –
2,800' to 3,800'
- Completes transfer of the
four Stemilt Parcels



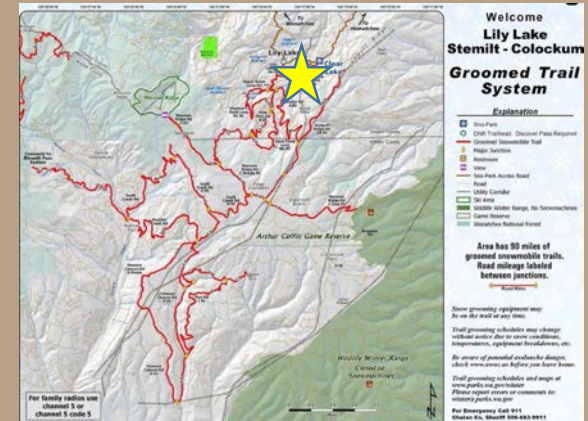
Stemilt 2 Transfer

Public Interest

Elk Migration Corridor and Calving Area



Stemilt Partnership - Wildlife, Recreation, Water, Agriculture,

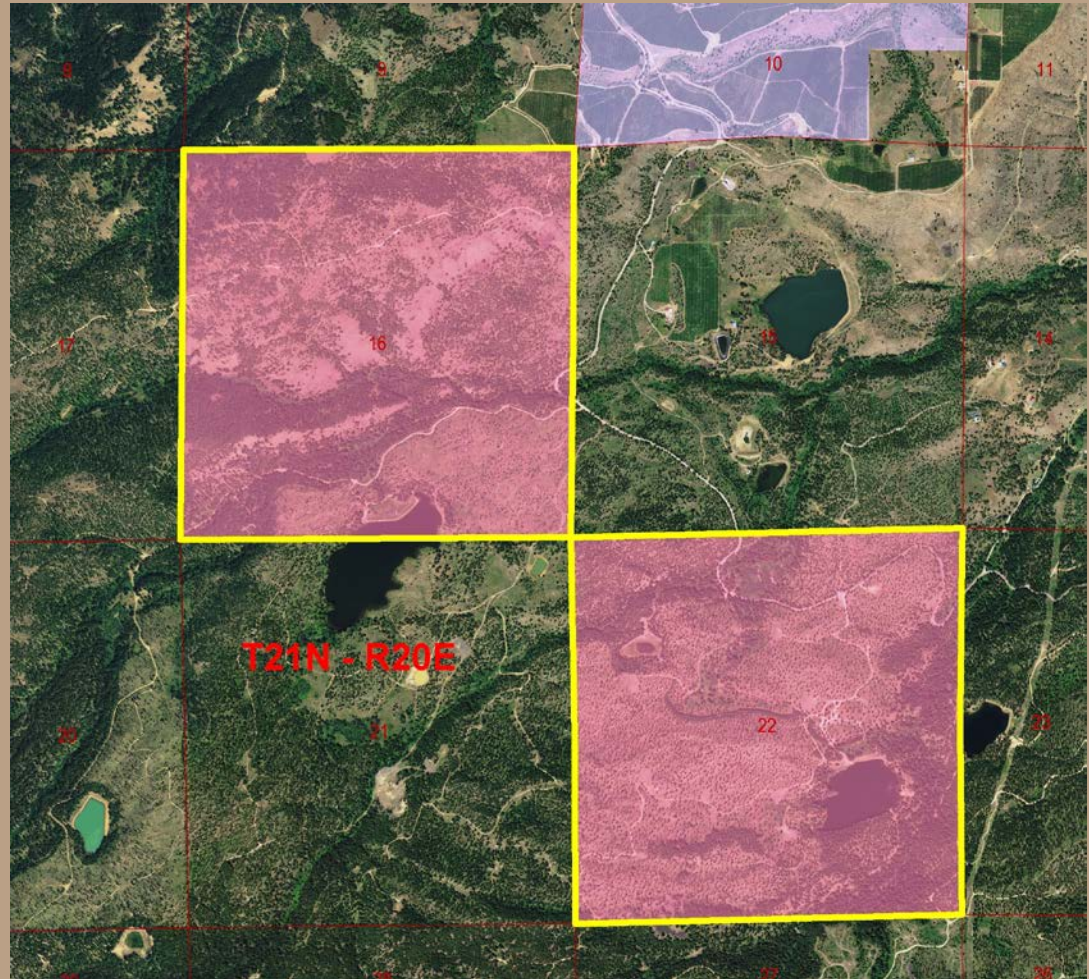


90 miles of Groomed Winter Trails

Stemilt 2 Transfer

Property Info

- Common School Trust;
1,275 acres
- Zoned Commercial Forest
- Prior Timber Harvests;
Site Class 5-DF
- No water rights; water
basin fully allocated
- Limited potential for orchard
development – 400 acres



Stemilt 2 Transfer

Appraisal

Appraised Value in late 2017	Acres	Land	Total
Stemilt 2	1,275.47	\$1,778,000	\$1,778,000
			\$1,394/acre

Distribution of Funds is 100% to the Real Property
Replacement Account - Common School Trust



Stemilt 2 Transfer

Questions ?

Resolution #1518



DNR Photo – Lilly Lake S.22



