



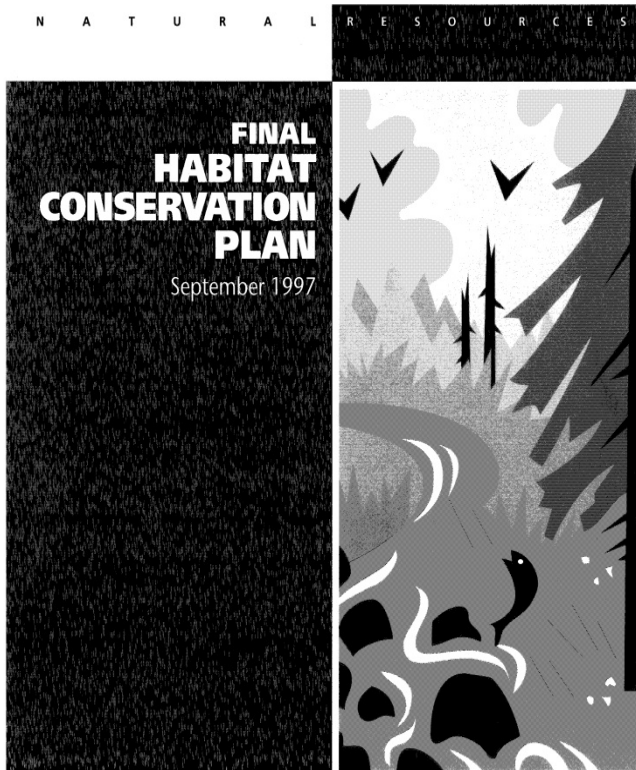
State Trust Lands Habitat Conservation Plan

Allen Estep, DNR

Carbon and Forest Management Work Group | December 6, 2023



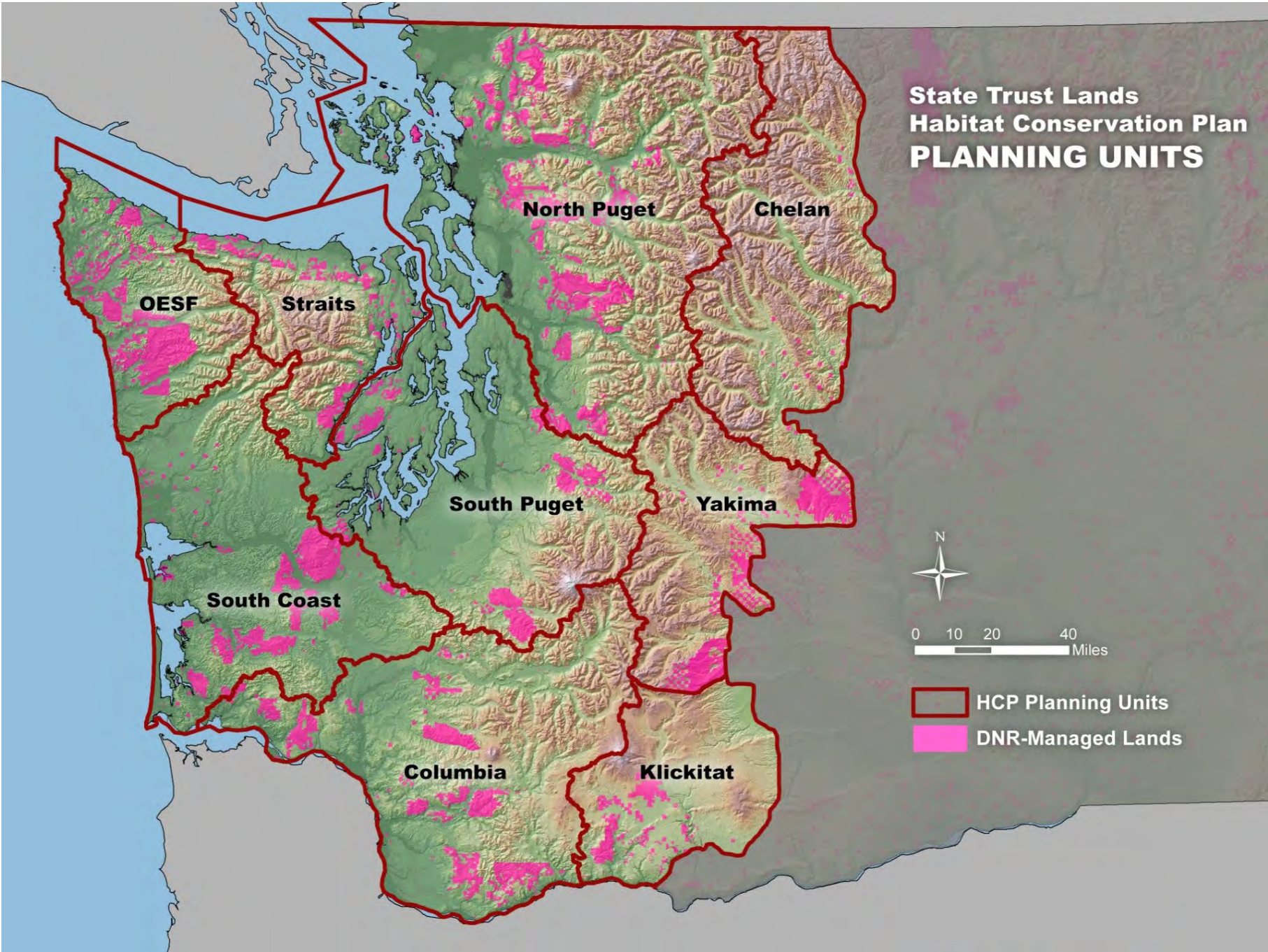
General Description of the HCP



- Adopted 1997
- Covers approximately 1.8 million acres in range of northern spotted owl
- 70 years in duration with options for 3, 10-year extensions for a maximum duration of 100 years
- An agreement with the US Fish & Wildlife Service and NOAA Fisheries, including a permit for incidental take of multiple federally listed species



State Trust Lands Habitat Conservation Plan PLANNING UNITS



Major Element: Conservation Strategies

- Northern spotted owl (5 Westside units, 3 eastside units and Olympic Experimental State Forest)
- Riparian (5 Westside units and OESF)
- Marbled murrelet (Range of MM; most of western WA)
- Multispecies for unlisted species (5 Westside units and OESF)
- Other federally listed species (all units)

Most of these strategies provide for or will result in some level of forest stand structural complexity

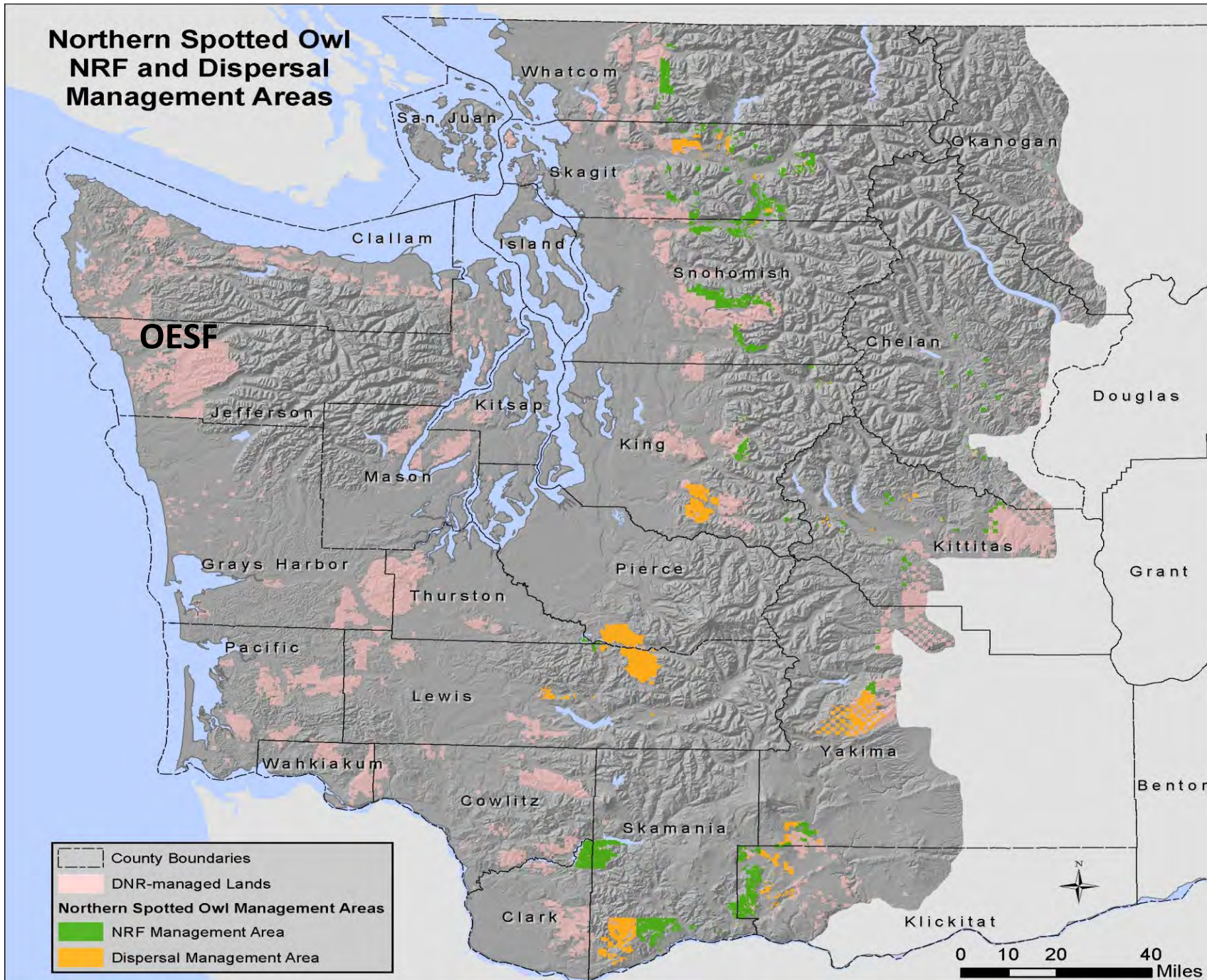


Northern Spotted Owl Conservation Strategy (Westside/eastside)



- Nesting, roosting, and foraging (NRF) management areas ($\approx 200,000$ acres statewide)
- Dispersal management areas ($\approx 200,000$ acres statewide)
- Spotted owl management units (SOMU); 50% of SOMUS maintained as habitat
- Modified strategies in Klickitat and South Puget HCP Planning Units (slightly different from general strategy)
- OESF also a unique strategy ($\approx 270,000$ acres)

Northern Spotted Owl NRF and Dispersal Management Areas



OESF also has spotted owl conservation objectives



Riparian Conservation Strategy (Westside)



- Identify stream types and place buffers; manage to provide shade, large woody debris
- Identify forested and non-forested wetlands and place buffers; manage to maintain hydrologic function
- Identify unstable slopes associated with riparian areas; manage to prevent sediment delivery
- Manage roads to prevent sediment delivery

Marbled Murrelet Conservation Strategy (Westside and Olympic Experimental State Forest [OESF])



Photo courtesy Rich MacIntosh

- Protect existing nesting areas (“occupied sites” and buffers)
- Concentrate long-term habitat development in strategic locations that are best suited to supporting murrelets (special habitat areas)
- Maintain “long-term forest cover” across the land base



Multispecies Conservation Strategy (Westside)

- Provides habitat for animal species of concern and other unlisted animal species and uncommon habitats – including state-listed, federal candidate, and state candidate listed species
- Built on riparian, northern spotted owl, and marbled murrelet strategies
- Protection of uncommon habitats (talus, caves, cliffs, oak woodlands, large and structurally unique trees, snags, balds, mineral springs)
- Protection for unlisted species of concern



Other Elements: Research and Monitoring



- DNR has a science support staff
- The scientists conduct research
- Provide training and consultations
- Provide feedback for improved operations
- OESF has a greater emphasis on research, monitoring, and adaptive management

Other Elements: Reporting



- Annual report to Federal Services
- Updates on conservation strategies and major programs
- Implementation Monitoring Report
- Other Effectiveness and Validation Monitoring updates or reports



Questions?

HCP Online Resources

<https://www.dnr.wa.gov/programs-and-services/forest-resources/habitat-conservation-state-trust-lands>

