

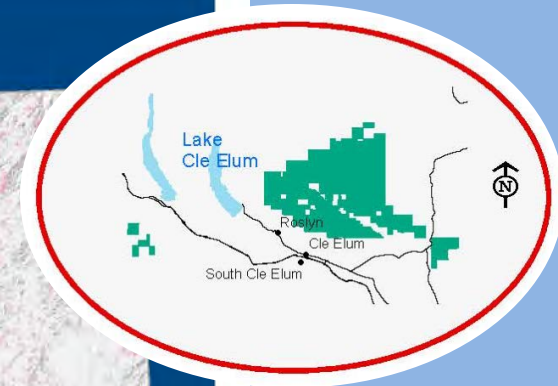
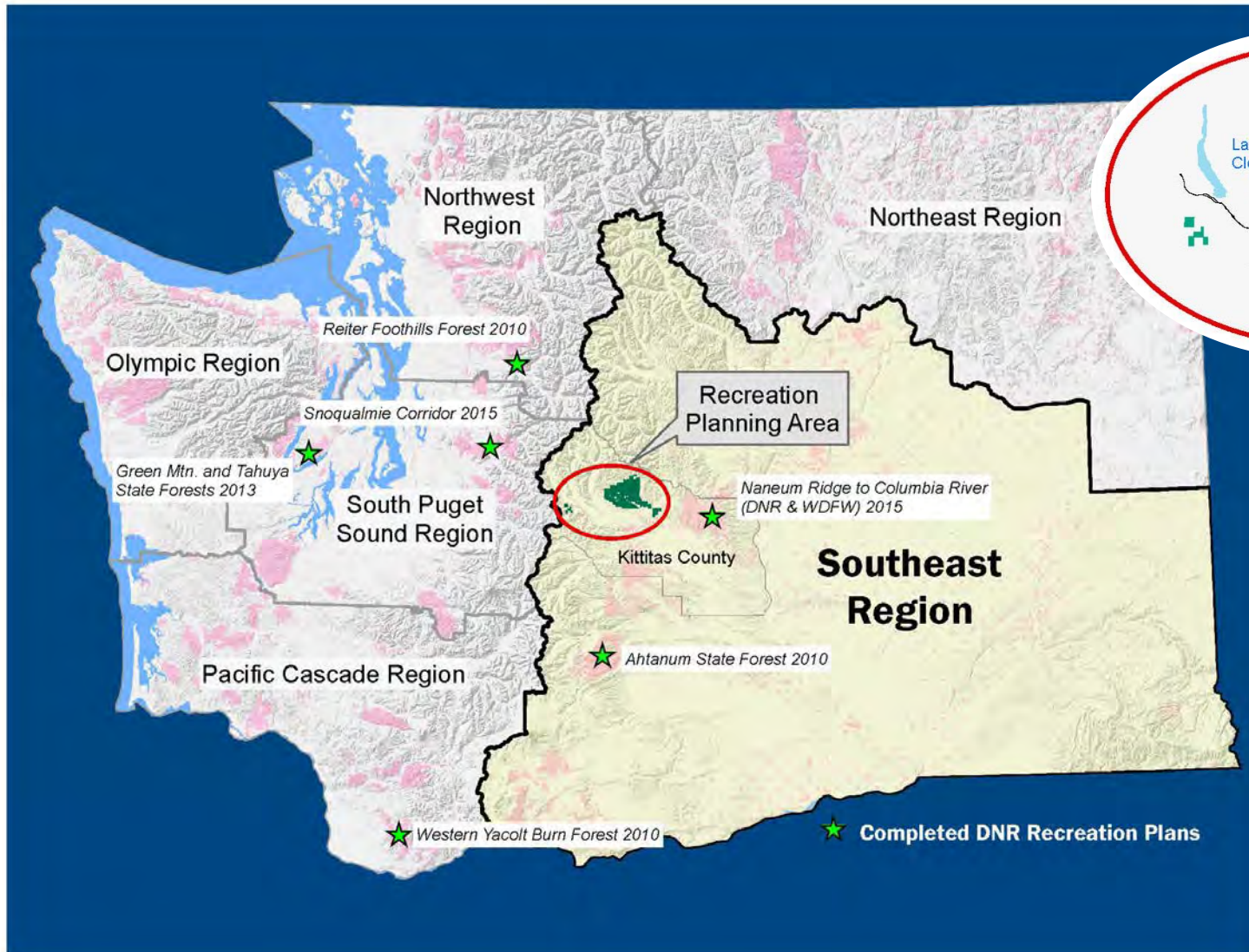
# Teanaway Community Forest Recreation Planning



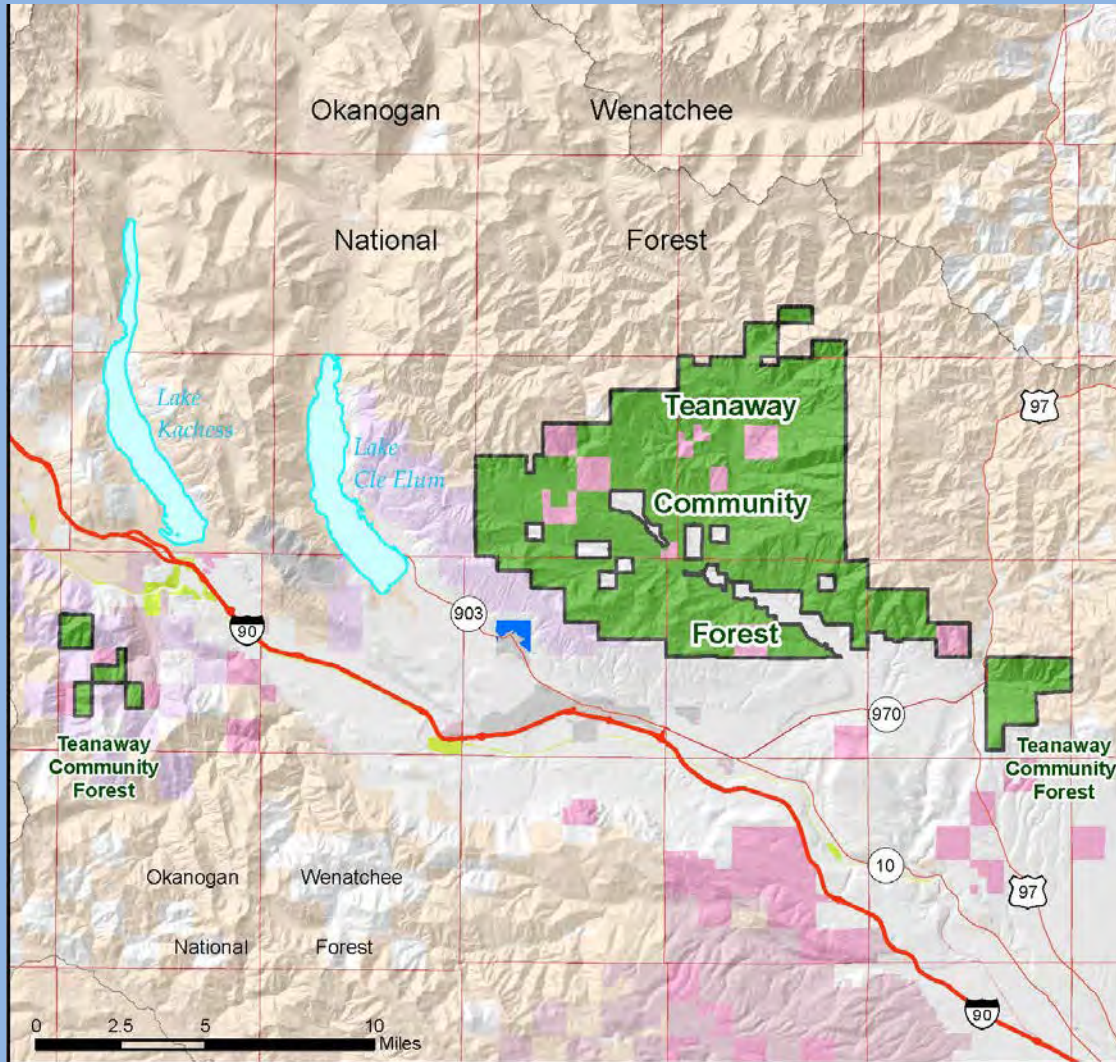
# Context of the Recreation Planning Area



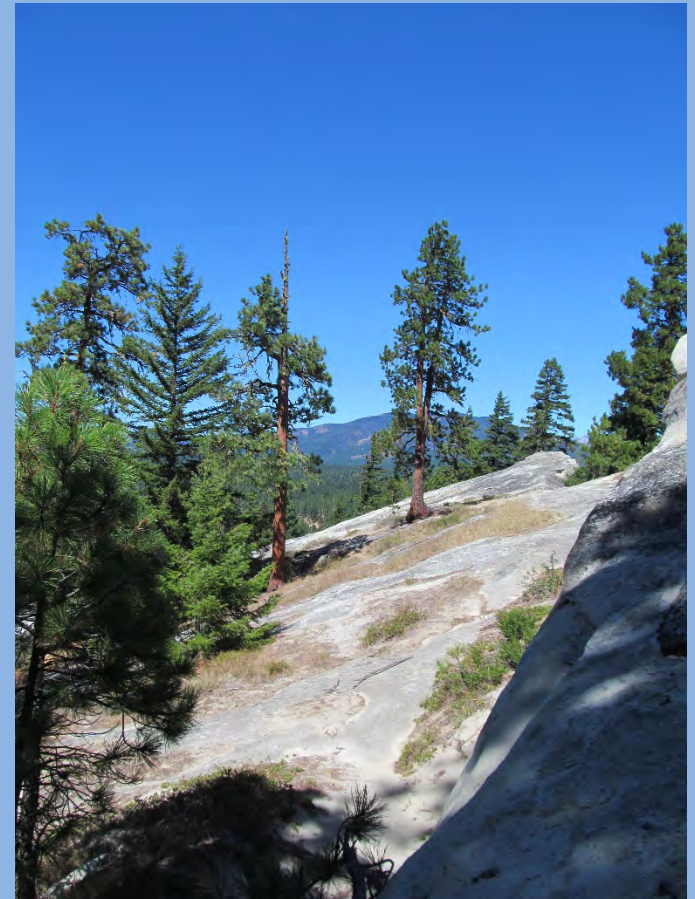
# Teanaway Community Forest



# Planning Area Map

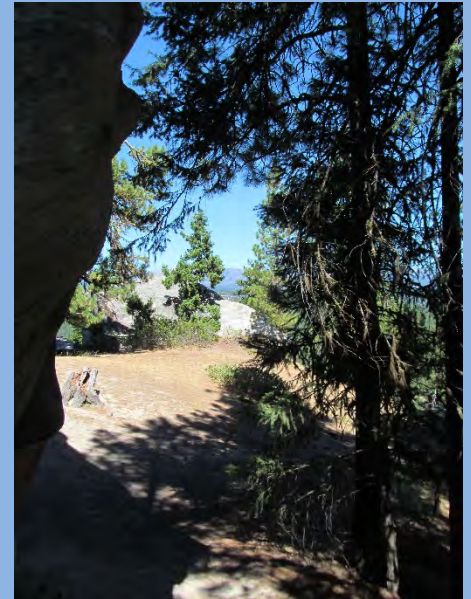


# Overview of the Recreation Planning Process



# Purpose of Planning

- Develop objectives for managing recreation for next 10-15 years
- Determine what types of recreation will be provided in the Community Forest and where
- Identify opportunities for connections across the landscape
- Identify partnerships and volunteer opportunities
- Establish priorities for implementing the plan



# Management Plan

## Recreation Objectives



- Develop a recreation plan for the forest
- Evaluate motorcycle use within the recreation planning process
- Provide a sustainable network of safe, enjoyable recreational trails
- Provide recreation opportunities and facilities that are consistent with watershed protection
- Maintain existing partnerships and establish new collaborations between public agencies, user groups, and citizen volunteers
- Establish a consistent enforcement and education presence

# Planning Process

- Seven Phases
- TCF Advisory Committee
- Land Suitability
- Typical process = ~ 24 months

<b>Phase 1</b>	<b>PRE-PLANNING</b> Determine the need and scope, project team, stakeholder involvement plan, and data collection needs
<b>Phase 2</b>	<b>INVENTORY/ LAND SUITABILITY</b> Determine the land suitability and planning context for the project
<b>Phase 3</b>	<b>RECREATION INVENTORY/ PUBLIC INVOLVEMENT</b> Determine public issues and concerns, hold public meetings, collect recreation field data, user surveys
<b>Phase 4</b>	<b>ASSESSMENT</b> Determine the 'BIG IDEA', or management concept for the planning area (what are we going to do where?)
<b>Phase 5</b>	<b>ALTERNATIVE(S)</b> Determine and describe the preferred alternative for the project (how and to what degree we provide recreation?)
<b>Phase 6</b>	<b>SEPA &amp; COMMUNICATIONS</b> SEPA is conducted, plan is edited and formatted for publication
<b>Phase 7</b>	<b>ADOPTION</b> Plan is adopted by the agency



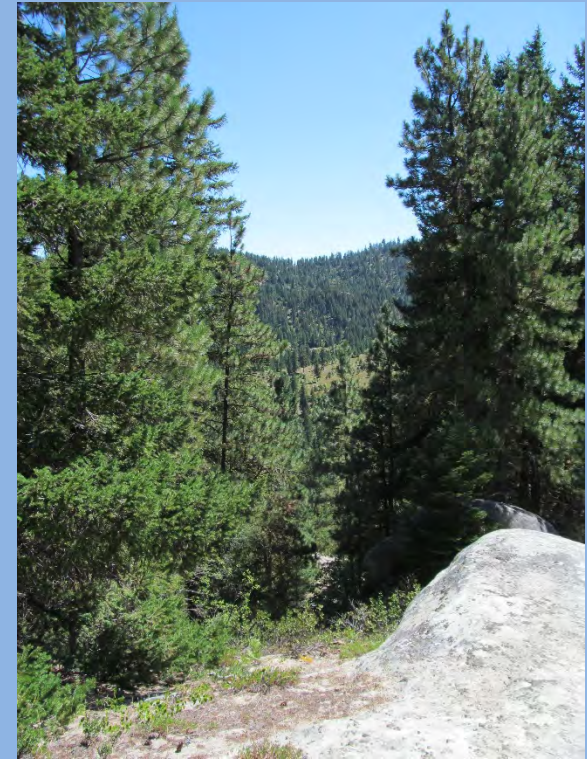
# Planning Goals

## Teaway Specific:

- To maintain and where possible expand recreational opportunities consistent with watershed protection, for activities such as hiking, fishing, hunting, horseback riding, camping, birding, and snowmobiling.

## General:

- Resource protection
- High-quality recreation experience
- Public safety



# Typical Planning Process

Recreation Planning Process		Year 1 Months 1-6	Year 1 Months 7-12	Year 2 Months 13-18	Year 2 Months 19-24
Phase 1	<b>PRE-PLANNING</b> Determine the need and scope, project team, stakeholder involvement plan, establish project website and determine data collection needs	[Activity bar spanning all months]			
Phase 2	<b>LAND SUITABILITY ANALYSIS</b> Determine the land suitability and planning context for the project: Biological, Soils/Geology, Management Modules	[Activity bar spanning all months]			
Phase 3	<b>PUBLIC INVOLVEMENT/ INVENTORY</b> Determine public issues and concerns, hold public meetings, collect recreation field data, user surveys, recreation planning committee (rpc), rpc field visits	[Activity bar spanning all months]			
Phase 4	<b>ASSESSMENT &amp; CONCEPTS</b> Synthesize issues and land suitability data. Determine preliminary management concepts for recreation	[Activity bar spanning all months]			
Phase 5	<b>CONCEPT &amp; PLAN WRITING</b> Finalize and describe a recommended recreation management concept, develop strategies and objectives, prioritize implementation and phasing of projects	[Activity bar spanning all months]			
Phase 6	<b>SEPA &amp; COMMUNICATIONS</b> Non-Project SEPA is conducted, plan is edited and formatted for publication	[Activity bar spanning all months]			
Phase 7	<b>ADOPTION</b> Plan is adopted by the agency	[Activity bar spanning all months]			

# Recreation Planning Committee

## Data Gathering

Biological Data  
Soils/ Geology Data  
Management Data

Field Visits  
Field Inventory of  
Current Use

Public Input  
Recreation Trends  
User Survey  
Adjacent Land Uses

## Assessment

Land Suitability  
Analysis

Field Visits

Issue Sorting  
from:

*Survey Results*  
*Public Meeting*  
*Committee Input*  
*On-Going Public Input*

Evaluate Costs of Capital  
Development & Maintenance

## Recommendations

Committee Brainstorming

Preliminary Recommendations

Develop/Review Draft  
Recreation Concept Plans

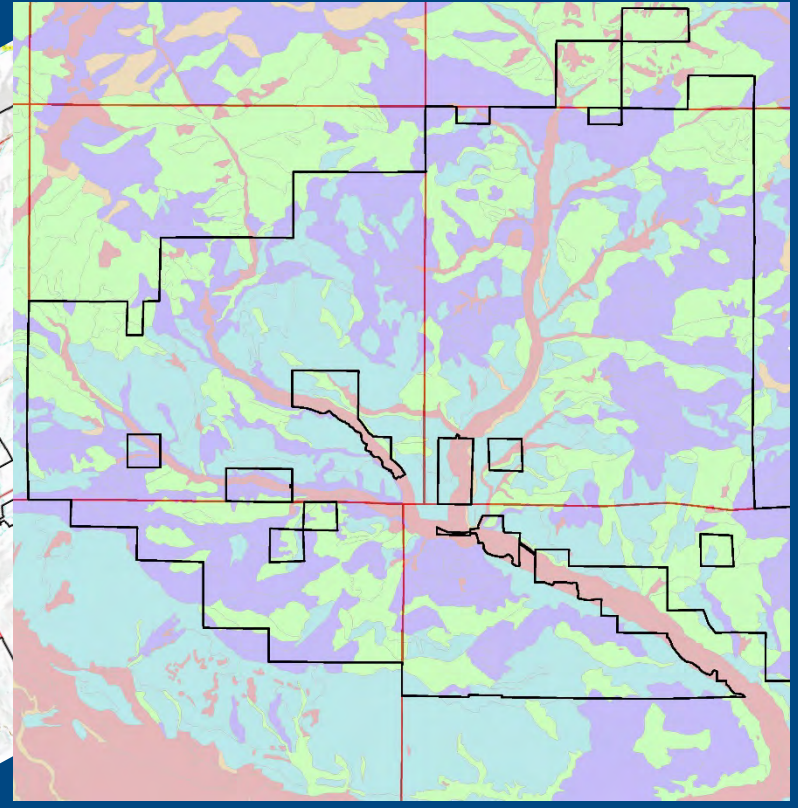
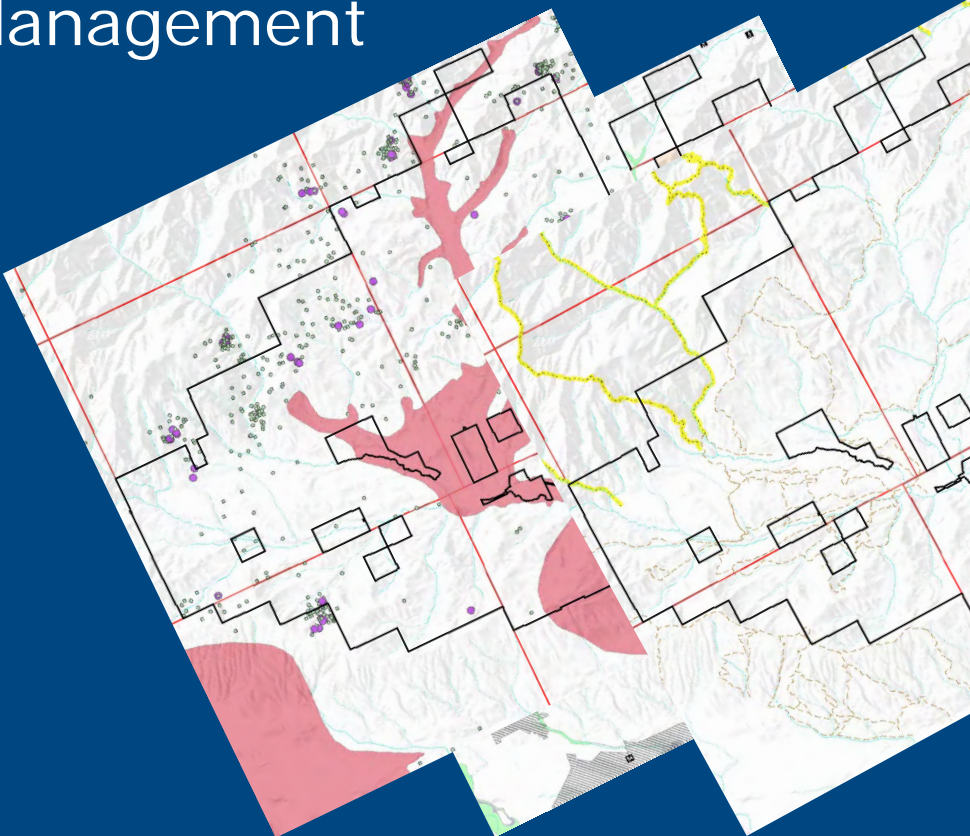
Prioritize Implementation Timeline

Final Concept Plan  
Committee Recommendation


# Recreation Land Suitability

Biology  
Soils  
Geology  
Management

Maps guide recreation planning efforts

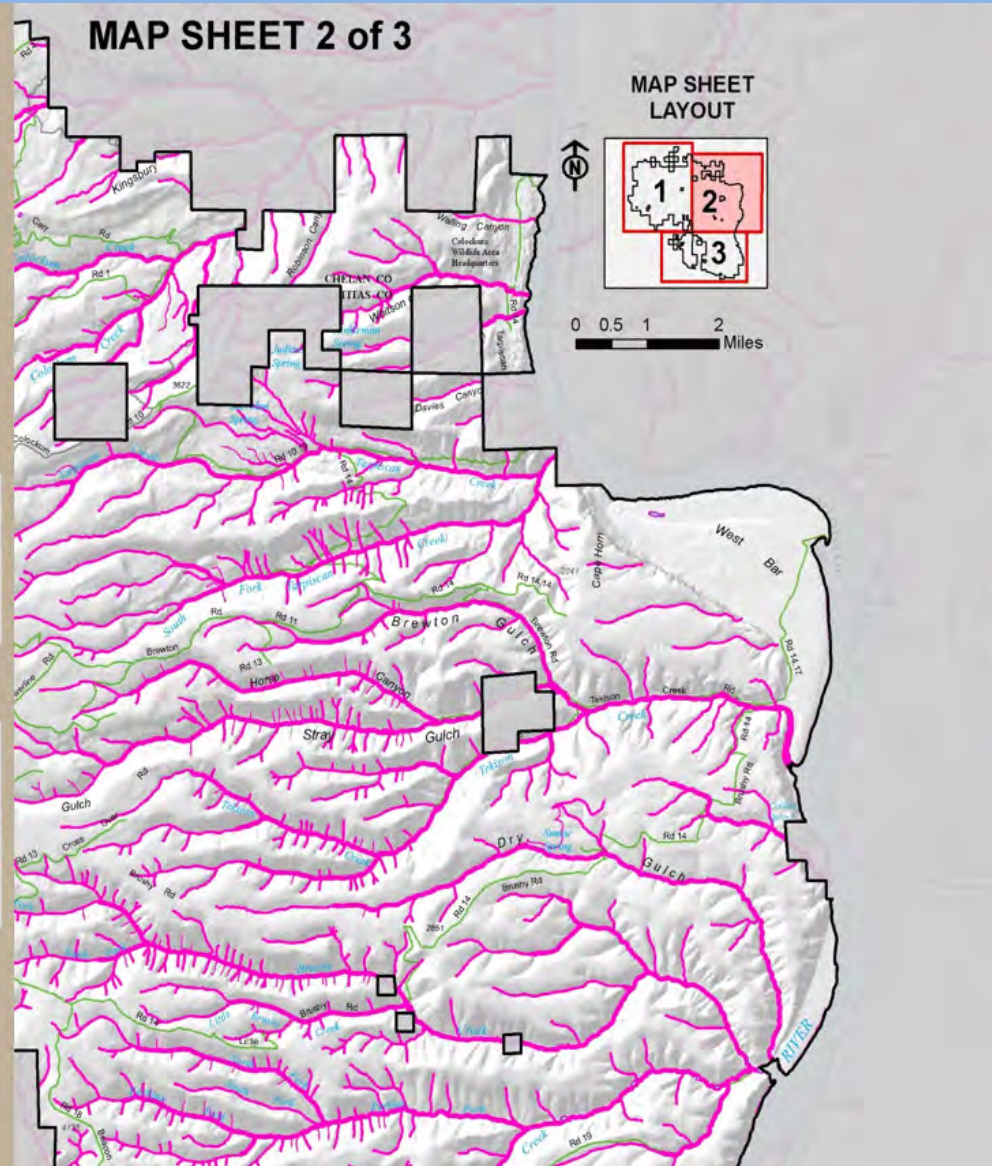


# Naneum Ridge to Columbia River Recreation Plan

 **Riparian Areas**

*SOURCE DATA:*  
Water Courses by Forest Practices  
SPPCODE  
SDE Feature Class  
ROPA.WCHYDRO & ROPA.WBHYDRO

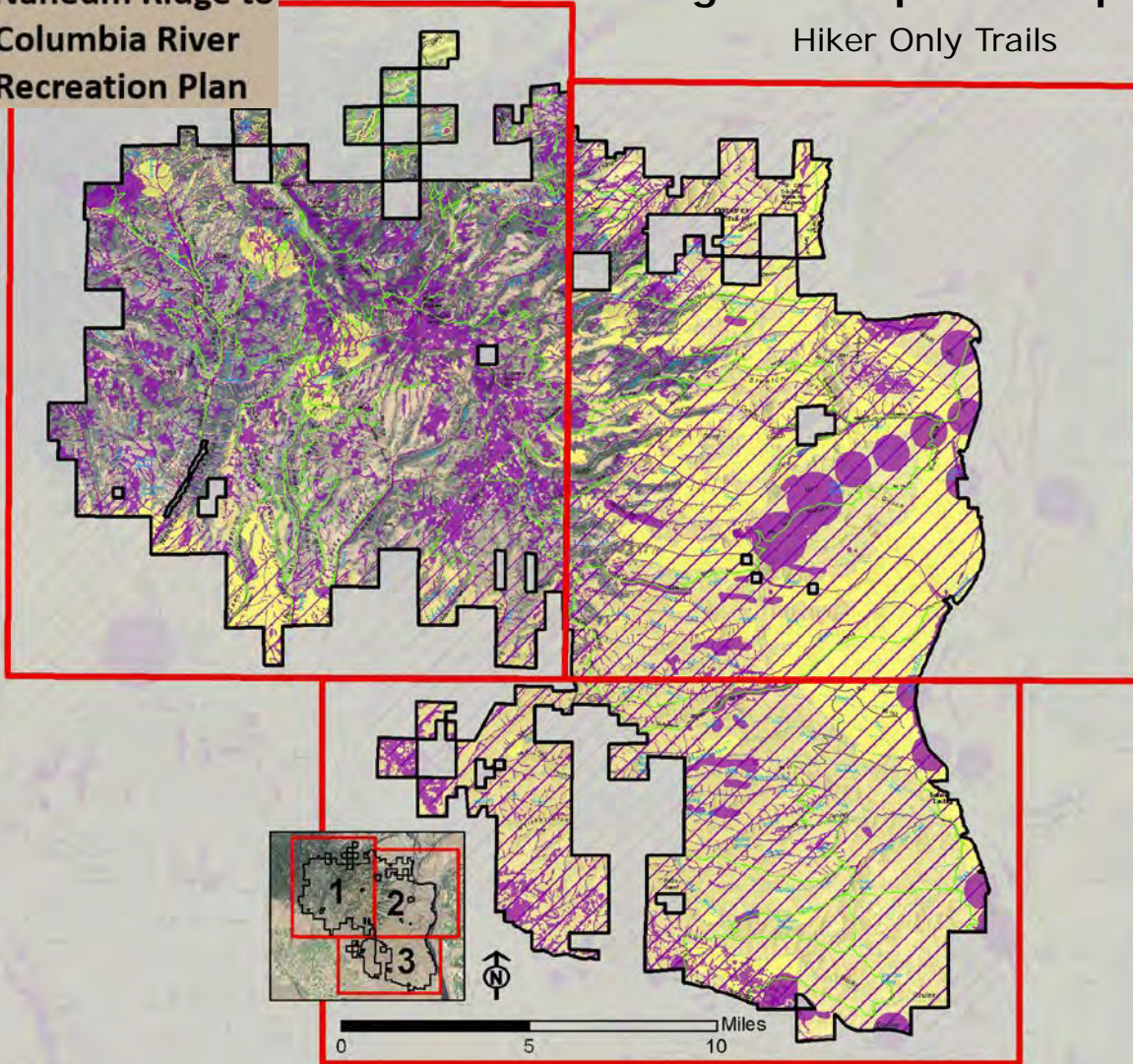
10-15-12 Draft Information – Subject to Change  
without Notification



**Naneum Ridge to  
Columbia River  
Recreation Plan**

**Biological Composite Map**

Hiker Only Trails



# User Survey

**14. If you stay overnight, where do most often stay? (Please choose only one)**

Camp in the area

Off-site camping

Off-site lodging

Other (please specify)

**15. If camping, what equipment do you use most often? (Please choose only one)**

Tent (car camping)

Fifth wheel/Trailer

Truck Camper

Motorhome/RV

**5. Who comes with you when you recreate?**

**16. When you visit the planning area, who do you typically come with? Please specify.**

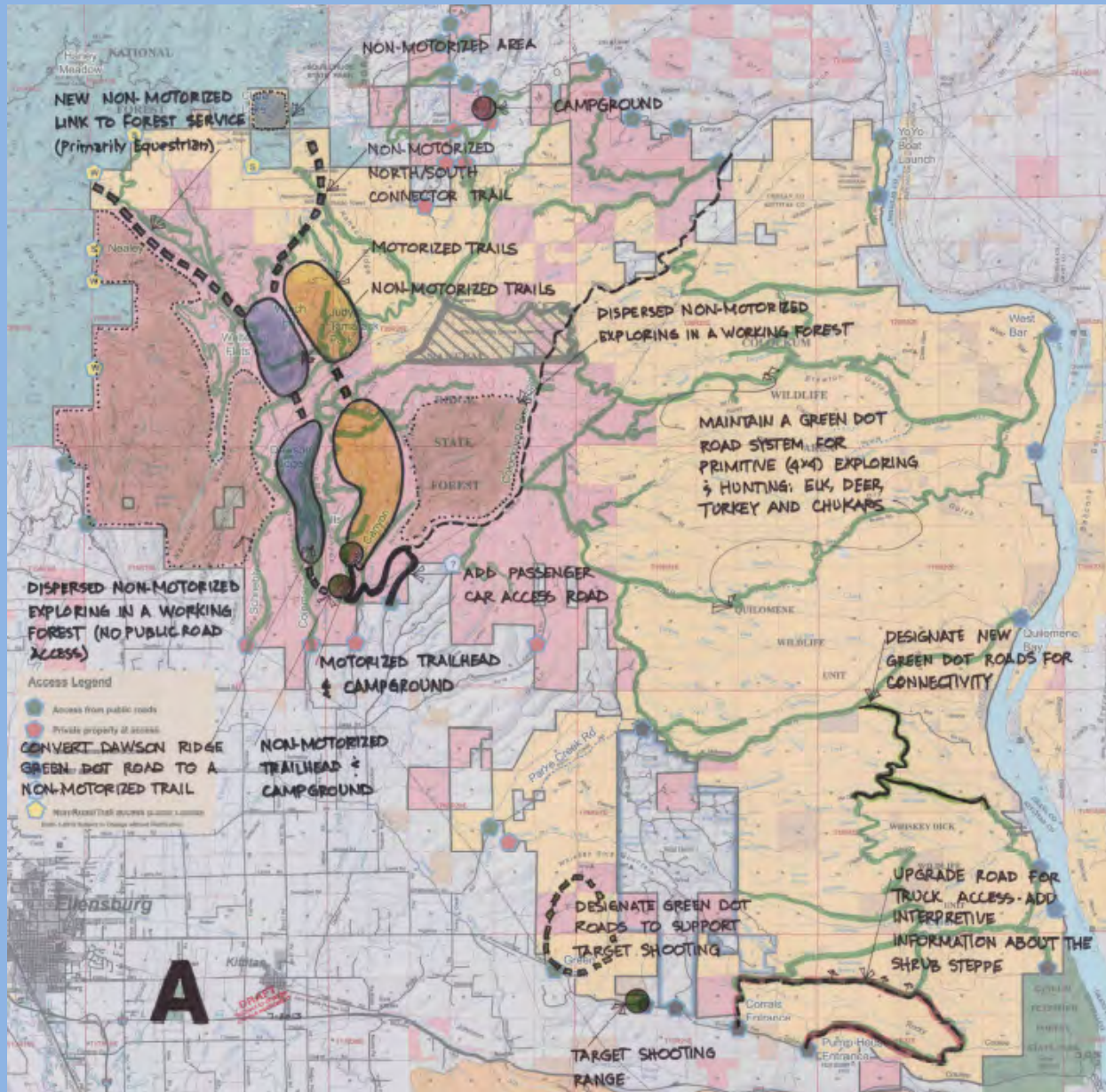
Myself

Family

Friend(s)

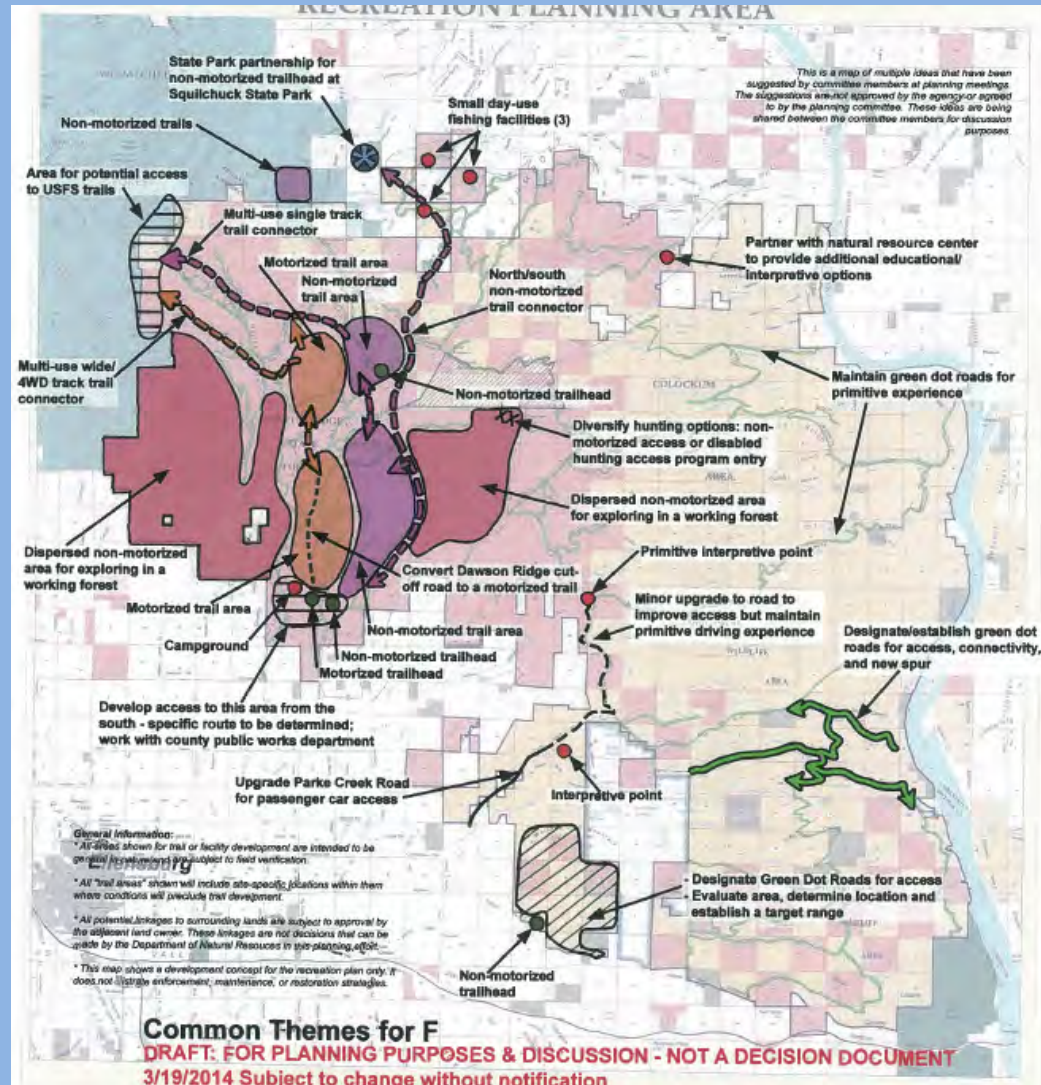
Recreation user group/club/organization

# Concept Development





# Preferred Alternative



# Objectives & Strategies

**Objective J:** Improve Parke Creek Road for public access to interpretive points as shown on the Concept Map.

## **Strategies**

1. Upgrade Parke Creek Road to the lower interpretive point to allow passenger vehicles and school buses access for educational programs.
2. Provide for primitive road access between the lower interpretive point on Parke Creek Road and the upper interpretive point on Beacon Hill Road/18 Road.

## **Western Forest Sub-Area**

**Objective K:** Evaluate and develop public road access to the Naneum Ridge State Forest area from the south.

## **Strategies**

1. Consult with the Kittitas County Public Works staff when evaluating public road access options south of the Naneum Ridge State Forest and/or from Colockum Road.
2. Project proposals will include public road options, cost benefit analysis, and mitigation strategies.

**Objective L:** Improve public road/trail linkage to adjacent public lands to the west.

## **Strategies**

1. Coordinate with United State Forest Service (USFS) to connect trails onto USFS lands.
2. Evaluate and develop a new green dot road or motorized trail connecting the motorized trail system in the Naneum Ridge State Forest to the motorized trail system on USFS lands in the Dot Creek area.

## **Green Gate Sub-Area**

**Objective M:** Provide long-term green dot road access in the Green Gate Sub-Area in locations that are more suitable for motorized uses. This area is currently crisscrossed with user-built trails and old tank routes that were used for military training.

# Implementation

**Table 2. Implementation Priorities and Phases**

Project Implementation Priorities and Phasing	
Phase I	Evaluate and plan road access to Naneum Ridge State Forest from the south
	Establish a winter non-motorized trail system
	Locate and develop a target shooting range
	Integrate the disabled hunter road access entry program into the planning area
	Plan for the long term sustainability of the road system and begin implementation of RMAP criteria in the shrub-steppe
	Develop a non-motorized trail system and trailhead in the Naneum Ridge State Forest
	Provide seasonal support facilities at high use dispersed use areas
	Restore areas damaged by recreational use
Phase II	Identify and restore camping-related damage along stream banks
	Create a north/south regional connector trail
	Develop a motorized trailhead and trails in the Naneum Ridge State Forest
	Develop a multi-use (motorized and non-motorized) single-track trail connector to USFS land
	Develop a multi-use (motorized and non-motorized) 4WD trail/road connector to USFS land
	Design and construct small day-use facilities at three lakes in the Stemilt Sub-Area
	Locate, design, and construct a campground in the Naneum Ridge State Forest
	Convert Dawson Ridge Road to a motorized trail; convert Pettit Road, south of the Arthur Coffin Game Reserve, to non-motorized public access only

# Teanaway Community Forest Recreation Planning

