

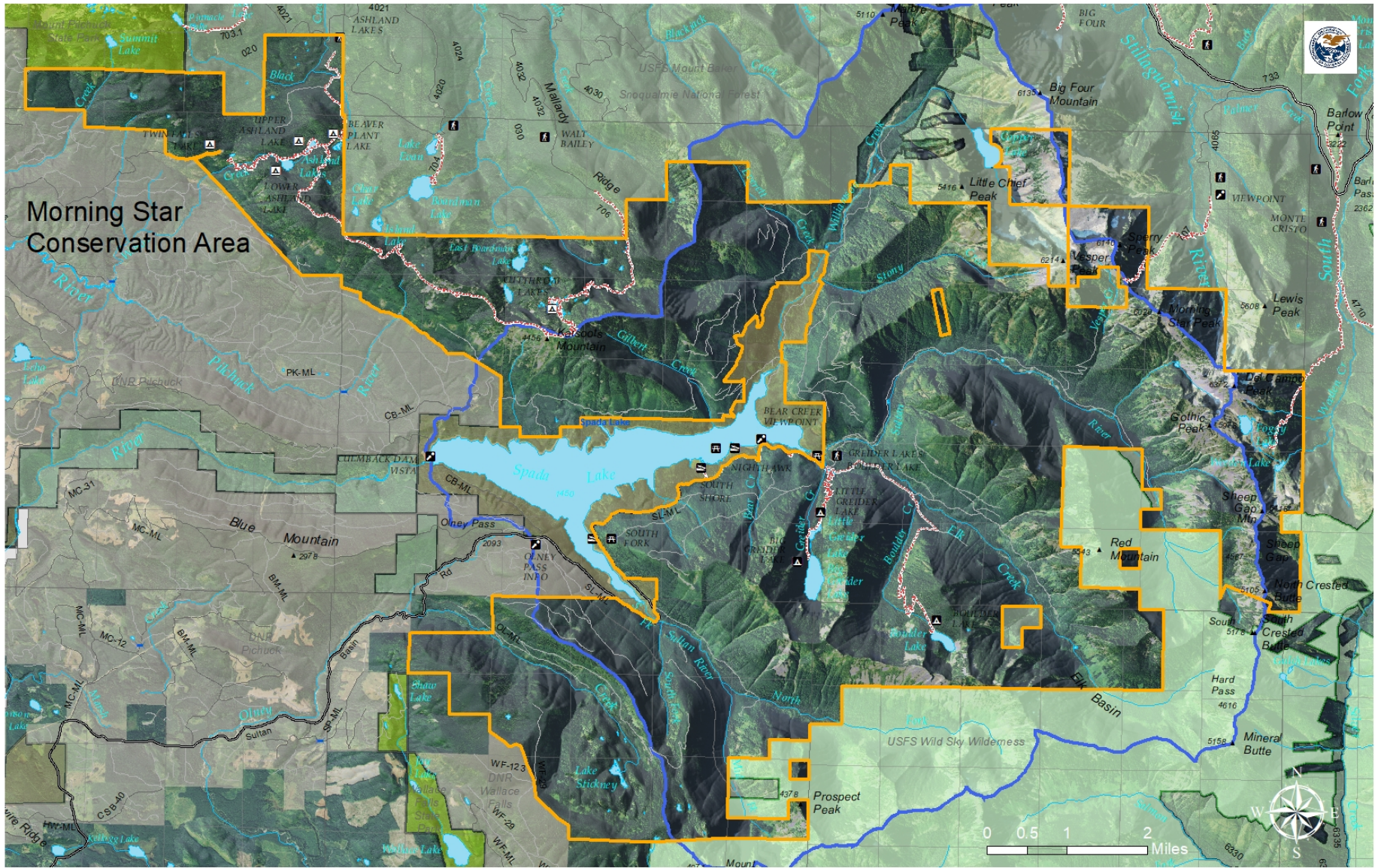


Draft Trails Plan



Morning Star Trails Planning

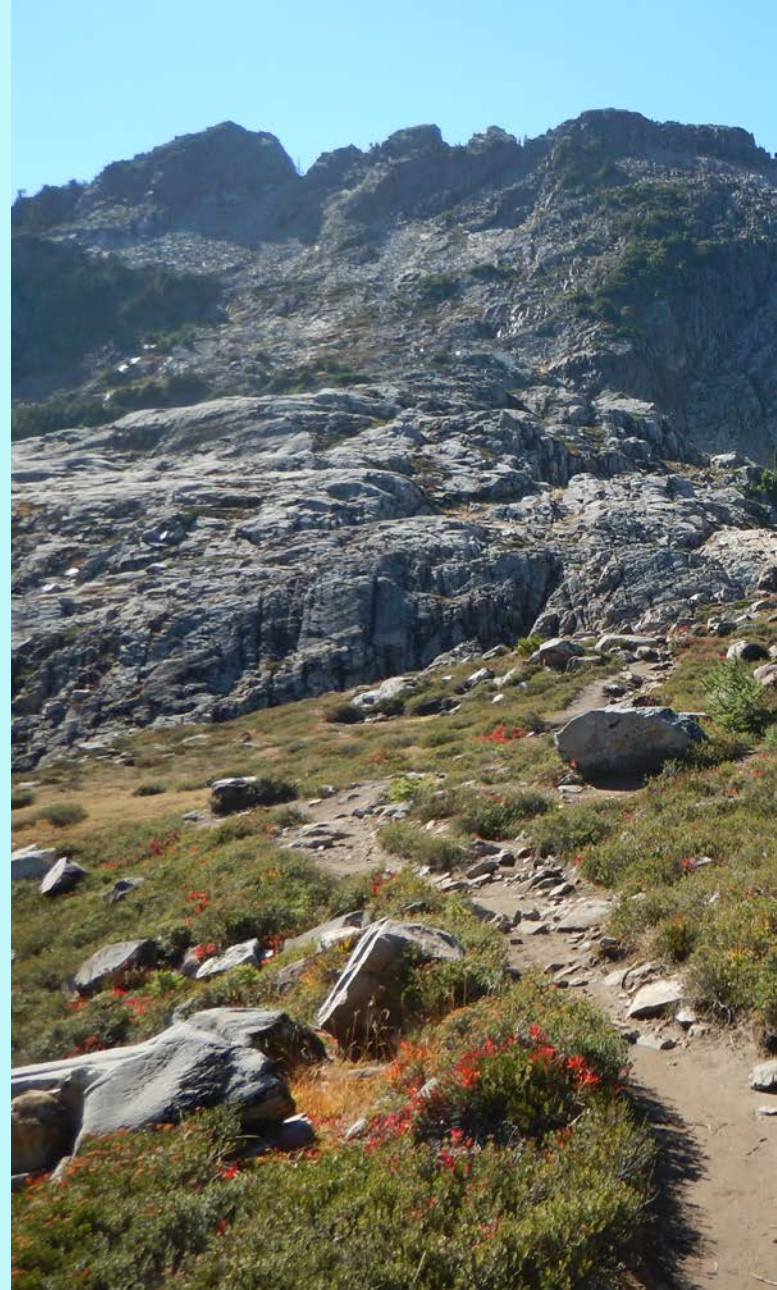




Morning Star Trails Planning



Draft Trails Plan



Morning Star Trails Planning



Department of Natural Resources

Paul McFarland, *Northwest Region Natural Areas Manager*

David Way, *Northwest Region Fire Management Forester*

Barbara Simpson, *Parks Planner*

Curt Pavola, *Natural Areas Program Manager*

Jason McMillan, *Recreation Maintenance Steward*

Eryn Couch, *Communications and Website*

Planning Committee

Marc Bardsley – North Cascades Conservation Council

Kim Brown –Washington Trails Association

Chris Hagen – YMCA BOLD and GOLD Program Director

Matt Jensen – UWild Adventures Program

Kathy Johnson –Pilchuck Audubon Society

Ken Masel –Washington Trail Blazers

Ruth Milner – Washington State Department of Fish and Wildlife

Gary Paull – United States Forest Service Wilderness and Trails Manager

Matt Perkins - American Alpine Club, WA Climbers Coalition, Cascade Climbers

Thom Peters – Alpine Lakes Protection Society

Phil Roberts - Natural Resources Conservation Service

Rad Roberts – Access Fund

Mike Schutt –Snohomish County PUD

Julie Sklare – Everett Watershed

Matt Speten – Morning Star Volunteer Recreation Steward

Mike Town – Sierra Club and Friends of Wildsky

Holly Zox – Morning Star Volunteer Site Steward

Acknowledgments



Table of Contents

Introduction

Agency Mission
Trust Lands
Natural Areas Program

Chapter 1: Planning Area

Context
Existing Facilities

Chapter 2: Planning Process

Overview
Funding and Scope
Data Collection
Public Outreach
Trails Committee

Chapter 3: Trails Plan

Planning Process
Determining Goals and Objectives
Implementation
Implementation Schedule
Initial Projects
Collaborative Management
Education and Enforcement
Adaptive Management
Sustainable Funding

Appendices

Appendix A: Field Inventory
Appendix B: Overlay Mapping
Appendix C: Public Involvement
Appendix D: Implementation Schedule



Goals and Objectives

Planning Process

The trails planning process included several information-gathering steps in preparation for producing a final plan:

- Step 1: Field Inventory – Appendix A
- Step 2: Overlay Mapping – Appendix B
- Step 3: Public Involvement – Appendix C

Following information-gathering phase of the trails planning process the Committee and DNR set priorities and created an action plan for future work in the landscape:

- Step 4: Determine Goals and Objectives
- Step 5: Create an implementation schedule – Appendix D

Determining Goals and Objectives

Input from the public and the Trails Committee was compiled into lists sorted by type of work/comment/issue. The planning committee ranked the categories as follows:

1. Conservation/Restoration
2. Maintenance
3. Interpretation/Education
4. Re-establish Access
5. Access Control
6. Increase Access
7. New Development



Goals and Objectives

1. Conservation/Restoration:

- Appropriate human waste disposal
- Leave large areas without roads or trails
- Garbage
- Alpine conservation
- Re-route Walt Bailey Trail if better location possible
- Designate campsites/limit camping to designated
- Discourage camping in alpine, redirect to lower areas
- Wildlife
- Prevent target shooting
- Pristine environment/resource protection
- Implement "Leave No Trace"
- Relocate trails away from sensitive areas/soils
- Wildness
- Delete unused campsites
- Limit new trail development
- Establish campground where use is high to contain impacts
- Pit toilets to minimize helicopter, avoid portables
- Close/rehabilitate social trails
- New trails only in NRCA expansion areas, not in existing areas
- No new trails

2. Maintenance:

- Improved trail maintenance
- Maintain trails
- Repair trails
- Repair campsites
- Remove infrastructure to cut costs
- Maintain campsites
- Road maintenance/improvements
- Parking
- Work with USFS to maintain roads accessing DNR trailheads
- Mark trails for summer and winter use



Goals and Objectives

3. Interpretation/Education:

- Use social media to educate "Leave No Trace"; sanitation; management philosophy. Less expensive than signage
- Educate public about sensitivity and susceptibility of over-use
- Signage about resident wildlife/ecosystems; sanitation
- Enforcement
- More DNR presence

4. Re-establish access:

- Reopen Boulder Lake Trail
- Improve/restore Bald Mountain Trail end to end
- Reopen Twin Falls Lake Trail
- Reopen trails that are currently closed
- Reestablish western access from Spada lake to Sperry/Vesper
- Restore access to Upper Sultan River Basin, Elk Creek, Williamson Creek, and Trail to Copper Lake
- Rebuild trail over Marble Pass
- Reconnect Spada area with Bald Mountain (roads-to-trails)
- Re-open historic trails to/from Spada

5. Access Control:

- Overuse at Gothic Basin
- Permit system - especially for sensitive/pristine areas such as Gothic, Cutthroat, Vesper/Sperry and Greider
- Limit over use; limit use to level that protects rather than responds to increased demand. Establish and enforce carrying capacity



Goals and Objectives

6. Increase Access:

- Access to existing rock climbing areas
- Loop trails
- Static Peak
- Fishing opportunities
- Paddling (lakes and rivers)
- Remote places
- Fishing - wild
- Hunting
- Copper Lake
- Winter use
- New trail access
- Add new trails in NRCA expansion areas

7. New Development:

- Pit toilet at Gothic Basin
- Family friendly hikes
- Composting pit toilets
- ADA access
- Trail to Static Peak
- Camping along south side of Spada Lake
- Roads to Trails Access to Views
- Pit toilet west bench Vesper lake
- Yurts
- New trails to alpine areas
- Connection between Mount Pilchuck/Ashland
- Trail to Copper Lake
- Cross country ski/snow parks
- Trail system interconnections
- Create more trails
- Establish routes up Vesper, Gothic, Del Campo
- Trailhead/trail to Static Peak (create sanctioned)





Implementation



Morning Star Trails Planning



Implementation

Capstone Project Concepts

- Pit toilets that do not require helicopter operations to install or maintain
- Toilets at the trailheads
- Institute a permit system to control level of use
- Greider first two miles: water crossing structures and water bar/drain dip regrading
- Gothic Basin: Impact studies and information collecting to establish a carrying capacity
- Trailhead signage about pit toilets and pack it in/pack it out
- Work cooperatively with the USFS on Gothic Trail.
- Bridge over Bear Creek on the Greider Lakes Trail
- Ashland boardwalk repair and campsite relocations
- Ashland Lakes Trail - Design/Site Plan for whole trail system
- Greider Lakes Trail - Design/Site Plan for whole trail system
- Move campsites away from waterfront locations
- Close Gothic Basin to overnight camping
- Gothic Basin - Design/Site Plan for whole trail system
- Gothic Basin pit toilets, signage, designated campsites
- Backcountry pit toilets on all trail systems



Implementation

Potential Capstone Projects

- **Boulder-Greider Trail System:** Complete design and permitting for trail improvement work, including water crossing installations on the first 2 miles of trail. The Boulder-Greider Mainline Trail, which accesses the Greider Lakes and Boulder Lake trails, consists of abandoned road. This segment of trail includes numerous stream crossings and water bars that detract from user experience and contribute to water quality issues. This work would focus on stream crossings and regrading at water bars to make the trail friendlier for hiking.
- **Gothic Basin:** Complete Site Plan to include sanitation, restoration of impacts associated with braided trails and indiscriminate camping, signage to direct use and educate users, and consideration of methods by which to control/limit use based on carrying capacity. Unmanaged use at Gothic Basin was clearly the issue of greatest concern that came from the planning process. This work would be done to bring Gothic Basin into the portfolio of designated (managed) recreation sites in the NRCA.
- **Pit Toilets throughout Morning Star NRCA:** This would require a determination of where pit toilets would be acceptable, what style to employ, and whether permits are required. Pit toilets would not be an option in the Spada Lake watershed, where water quality is of paramount concern.





Morning Star Trails Plan Implementation Schedule

	Biennium				2019-2021				2021-2023				2023-2025				2025-2027					
	Year		2018		2019		2020		2021		2022		2023		2024		2025		2026		2027	
	Quarter		1	2	3	4	1	2	3	4	1	2	3	4	1	2	3	4	1	2	3	4
Routine Maintenance Period																						
Gothic Basin																						
Data collection and assessment																						
Establish Public Use Parameters																						
Install Toilet(s) and signage																						
Funding application/proposal period																						
Site planning and permitting																						
Restoration/Construction																						
Cutthroat Lakes/Walt Bailey																						
Site planning and permitting (RCO 16-1541 grant funding)																						
Construction (assumes irregular funding timeline/extension)																						
Boulder Lake Campground																						
Purchase/Install Toilet(s) (17-19 capital funding)																						
Funding application/proposal period																						
Site planning and permitting																						
Construction																						
Boulder-Greider Trail System																						
Trail improvements along first two miles (17-19 capital funding)																						
Funding application/proposal period																						
Site planning and permitting																						
Construction																						
Ashland Lakes Trail System																						
Funding application/proposal period																						
Site planning and permitting																						
Construction																						
Vesper/Sperry/Sunrise																						
Funding application/proposal period																						
Data collection and assessment																						
Establish Public Use Parameters																						
Site planning and permitting																						
Construction (tbd)																						
Greider Lakes Trail and Campgrounds																						
Funding application/proposal period																						
Site planning and permitting																						
Construction																						
Bald Mountain Trail																						
Funding application/proposal period																						
Site planning and permitting																						
Construction (tbd)																						
Static Peak																						
Funding application/proposal period																						
Data collection and assessment																						
Establish Public Use Parameters																						
Site planning and permitting																						
Construction (tbd)																						
Year Ten Plan Update																						
Reevaluate Morning Star Trails Plan progress and priorities																						



Morning Star Trails Planning



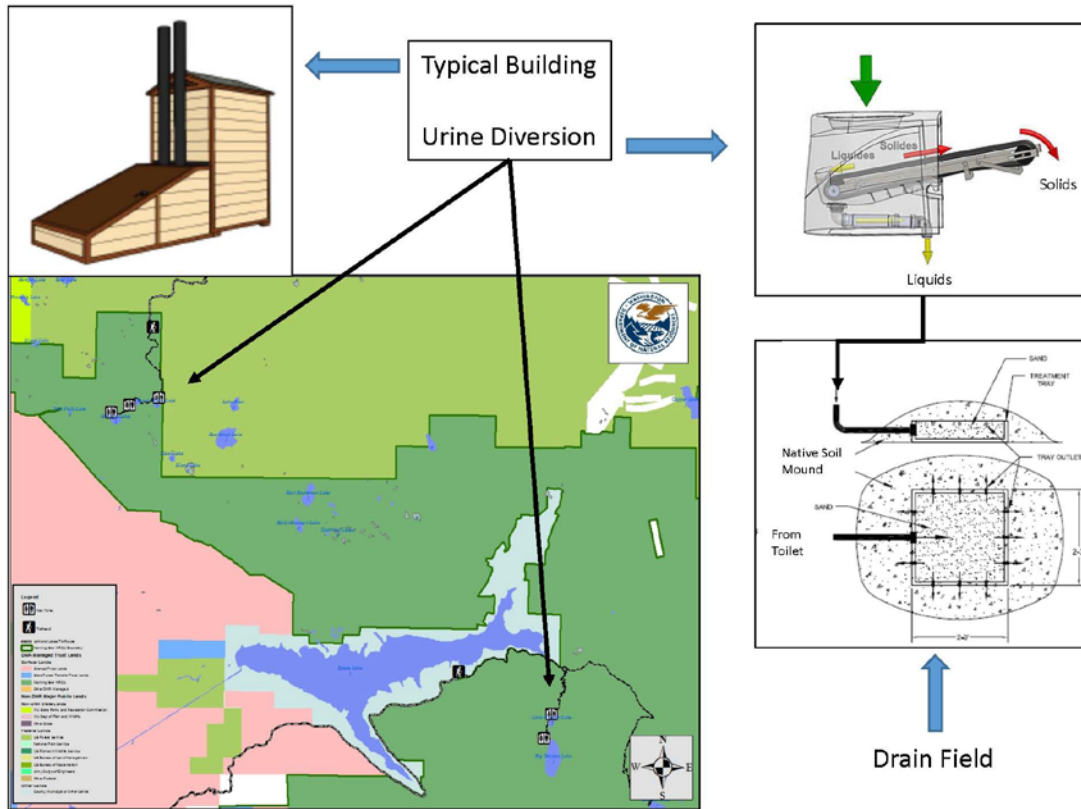
Initial Projects

Project	Funding Source	Description
Morning Star Trail and Campground Renovation	WWRP Grant #16-1541, Washington Wildlife and Recreation Program "state lands development" category	Renovation of one mile of existing trail, six backcountry campsites, and new construction of three pedestrian bridges on the Cutthroat Lakes Trail
Morning Star Trail Improvements	State Capital Budget Funding	Trail improvements along the Boulder-Greider mainline trail; procurement of 1 bridge for later installation along the Boulder-Greider mainline trail; procurement and installation of sustainable toilet(s) at the Boulder Lake Campground
Morning Star Backcountry Toilets	State Capital Budget Funding	Procurement of 3 sustainable backcountry toilets for installation in subsequent funding cycle



Proposed Projects

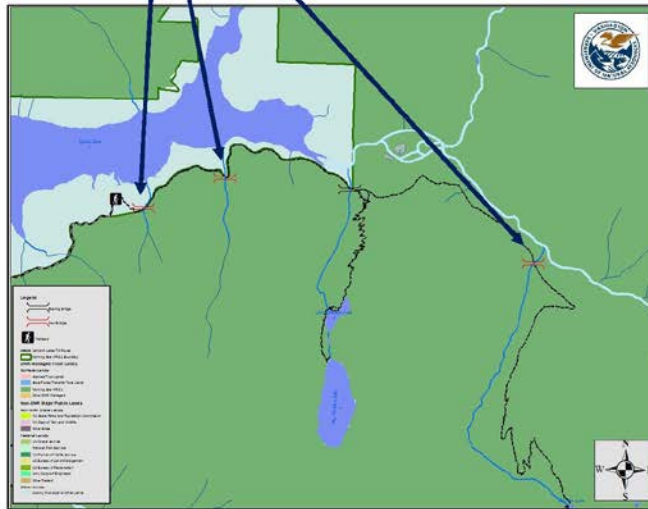
Development Site Plan Morning Star Sustainable Backcountry Toilets WWRP 18-1614



Proposed Projects

Development Site Plan Morning Star Boulder-Greider Bridges WWRP 18-1860

Typical Bridge Design



Typical Bridge Specifications

- Bridge Type: Fiber-reinforced Polymer Truss Span
- Design Live Load: 85 PSF
- Snow Load: 105 PSF
- Basic Wind Speed: 85 MPH
- Maximum Weight of Individual Piece: 200 LBS
- Width: Approximately 36 inches
- Length: Various, to Fit Site



Moving Forward

Collaborative Management

- Maintain existing partnerships and encourage new volunteer partnership opportunities
- Establish Morning Star Advisory Committee
- Increase partnering opportunities with neighboring landowners and other public agencies

Education and Enforcement

- Integrated enforcement strategy that establishes routine presence via DNR law enforcement, recreation wardens, recreation staff
- Coordinate with other agency law enforcement where appropriate
- Effective signage to education users
- Website outreach to communicate rules, closures, etc.

Adaptive Management

- Evaluate site specific conditions when implementing projects
- Respond to new or changing information and variable site conditions
- Consider proposals from others that are consistent with plan concepts, goals and objectives

Sustainable Funding

- Continue to seek grant and capital funding for maintenance, development, enforcement and facility construction projects
- Encourage public participation by incorporating volunteer work into funding opportunities
- Consider alternative funding sources





Advisory Committee



Morning Star Trails Planning

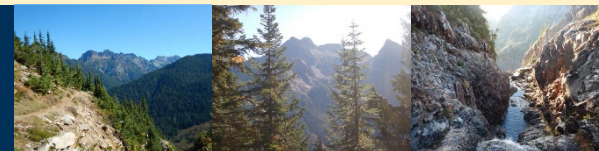




Letters of Support

WWRP 18-1614; Sustainable Backcountry Toilets
WWRP 18-1860; Boulder-Greider Bridges

PDF by email to paul.mcfarland@dnr.wa.gov





Thank You!

