

Forest Practices Adaptive Management Program Roles and Responsibilities

Joe Shramek
Forest Practices Division Manager
May 8, 2019



Purpose

- **Highlight adaptive management program components as provided in WAC 222-12-045**
- **Highlight selected purposes and processes to provide high-level context for Board discussions**



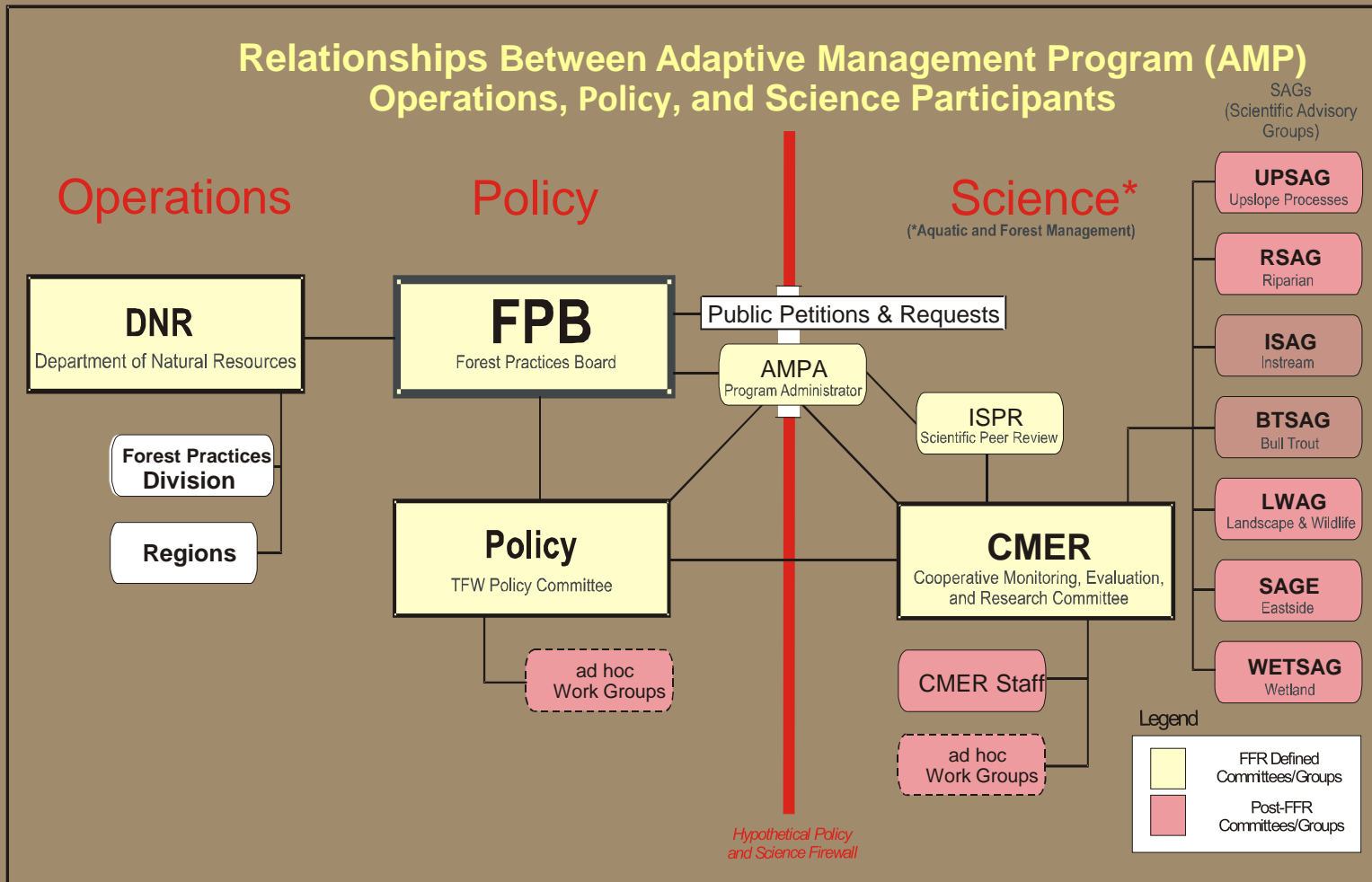
The FPB directs the AMP

- **WAC 222-12-045**
 - “In order to further the purposes of chapter 76.09 RCW, the [FPB] has adopted and will manage a formal science based [AMP]...”
 - “The purpose...is to provide science-based recommendations and technical information to assist the board...to adjust rules and guidance for aquatic resources...” (-045(1))
 - “The board manages the program...” (-045(2)(b))



Adaptive Management Program Elements

Source: Berge, H. 2015. "FPB Training - Adaptive Management Program July 21, 2015."



Selected AMP Components

- **Forest Practices Board (FPB)**
- **Timber, Fish and Wildlife Policy committee (Policy)**
- **Cooperative Monitoring, Evaluation and Research committee (CMER)**
- **Adaptive Management Program Administrator (AMPA)**



TFW Policy

- **Purpose**: the Policy committee considers CMER findings and makes recommendations to the FPB about rules, board manual and other guidance
- **Membership is defined in WAC**
 - self-selected by named caucuses
 - FPB does not review nor appoint members
- **Recommendations to FPB can be made in two ways:**
 - Consensus decision; or
 - Outcome of dispute resolution



CMER - Cooperative Monitoring, Evaluation and Research Committee

- Purpose: Provide scientific information to support policy deliberations and FPB decisions about whether to change forest practices rules
- FPB appoints members



Current CMER membership

Name	Caucus	Date Approved by FPB
Mark Mobbs	Tribal	2/13/2001
Todd Baldwin	Tribal	11/9/2010
Debbie Kay	Tribal	8/14/2012
Mark Hicks	State/ECY	6/6/2007
Vacant	State/DNR	
Marc Hayes	State/WDFW	8/11/2015
Doug Martin	Landowner	2/13/2001
Jenny Knoth	Landowner	2/10/2016
Julie Dieu	Landowner	2/22/2008
A.J. Kroll	Landowner	5/11/2010
Chris Mendoza	Conservation Caucus	11/10/2004
Vacant	USFWS	
Harry Bell	Small Landowner/WFFA	2/14/2007
Bill Ehinger	State/ECY Alternate	2/8/2006



CMER (cont.)

- Purpose: Provide scientific information to support policy deliberations and FPB decisions about whether to change forest practices rules
- FPB appoints members
- Decisions made by consensus or through dispute resolution



CMER (cont.)

- **CMER manages the AMP research and monitoring programs, including SAGs and sub-groups**
- **CMER develops and maintains protocols and standards to assure quality control**
- **CMER maintains and updates the CMER Work Plan**
 - **Serves as basis for recommending a biennial budget to Policy for approval (and then from Policy to FPB for approval)**



AMPA - Adaptive Management Program Administrator

- WAC directs DNR to employ a full time independent administrator to oversee the AMP and support CMER

Key roles:

- Responsible for administration of the AMP
 - Supervises DNR AMP staff and coordinates with NWIFC on integration of CMER scientists
 - Does the day-to-day execution and management of the approved budget, including substantial procurement of services



AMPA (Key Roles cont.)

- The “keeper” of the AMP process
- Functions as liaison between CMER, Policy and FPB
 - Ensures FPB’s direction and expectations are understood
 - Serves as neutral scientific expert to the FPB
 - Conveys CMER results to Policy and Policy recommendations to FPB
- Assists CMER and Policy in developing the biennial CMER master project schedule, and presents it to FPB at May meetings

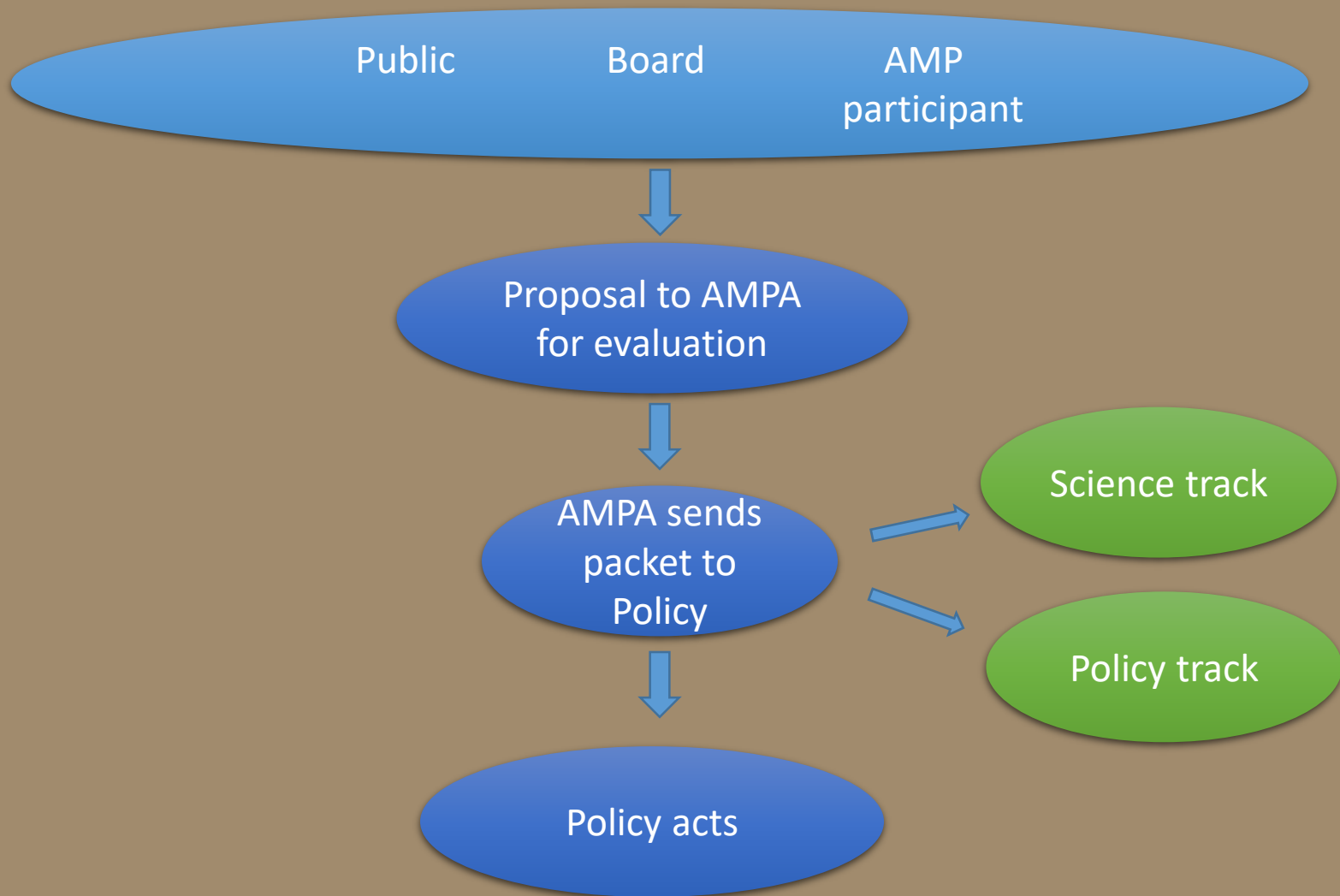


Forest Practices Board

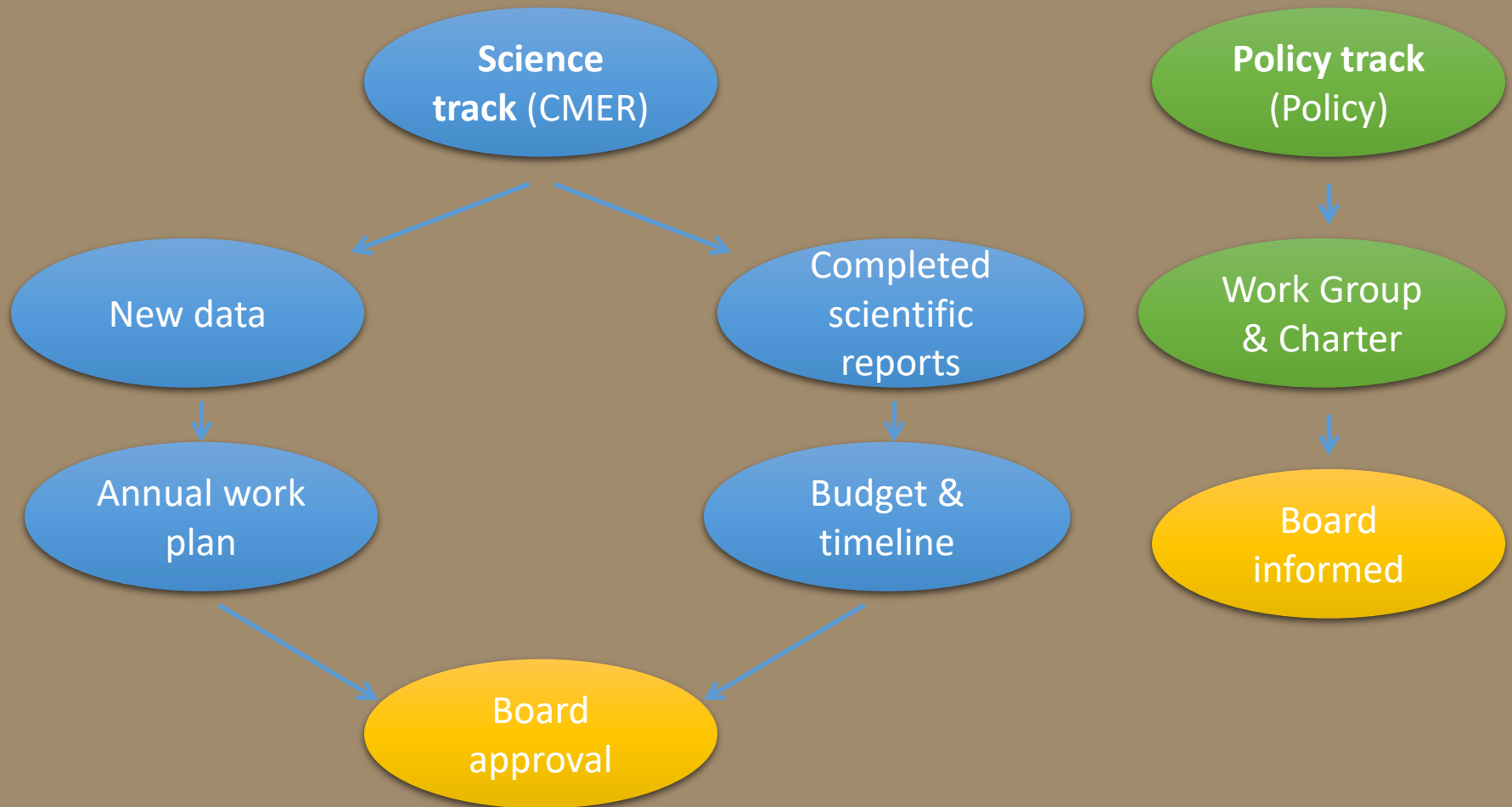
- **Considers recommendations coming from the AMP, generally as communicated by the AMPA following a decision by Policy**
 - **FPB decisions are not required to be consensus-based**
- **Establishes AMP priorities, largely through consideration and approval of the biennial master project schedule and budget**
- **Requires AMP to complete the work described through approved work plans and budgets**



Proposals for new AMP work: “proposal initiation”



Integration and implementation



Decisions about results

