

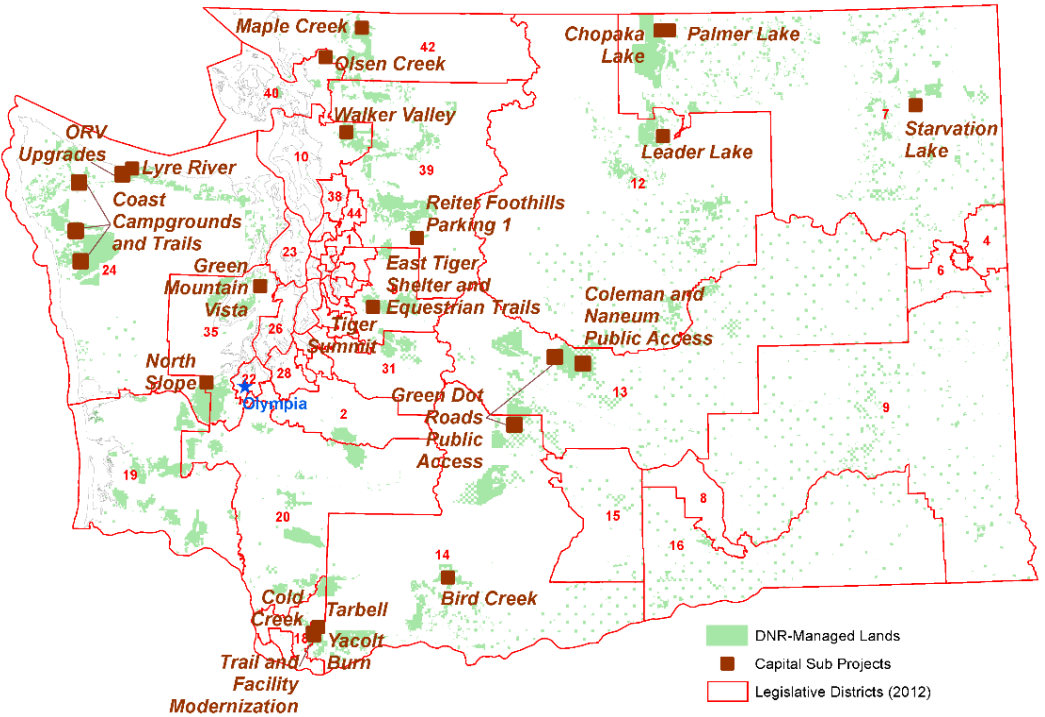


HILARY S. FRANZ  
COMMISSIONER OF PUBLIC LANDS

# Promoting Safe and Sustainable Recreation

**For capital project investments that improve public safety and decrease environmental affects statewide.**

Project Sites for new and upgraded facilities to address the increased visitor traffic on DNR-managed lands. The proposed projects address issues related to safety, community health, access, equity, environmental, and user experience in the locations below.



## \$5.8M Capital Budget

Request for critical recreation investments to improve user safety, decrease environmental impacts, and address growing user demand



Public use on DNR-managed land increased 21% from 2019 to 2020.

### CONTACT

**Brian Considine**  
Legislative Director  
Cell: 360-764-0013  
[brian.considine@dnr.wa.gov](mailto:brian.considine@dnr.wa.gov)

**Olgly Diaz**  
Deputy Legislative Director  
Cell: 360-918-3555  
[olgy.diaz@dnr.wa.gov](mailto:olgy.diaz@dnr.wa.gov)

## Project Themes

- Safe Recreation for a Rapidly Growing Puget Sound Region Population
- Making Baker to Bellingham a Reality
- Investing in Rural Communities
- Improving ORV Access and Mitigating Impacts in NW Washington
- Trail and Facility Modernization in SW Washington
- Central Cascades Public Access





**HILARY S. FRANZ**  
COMMISSIONER OF PUBLIC LANDS

## \$5.8M Capital Budget

Request for critical recreation investments to improve user safety, decrease environmental impacts, and address growing user demand



**Public use on DNR-managed land increased 21% from 2019 to 2020.**

### CONTACT

**Brian Considine**

Legislative Director

Cell: 360-764-0013

[brian.considine@dnr.wa.gov](mailto:brian.considine@dnr.wa.gov)

**Olgly Diaz**

Deputy Legislative Director

Cell: 360-918-3555

[olgy.diaz@dnr.wa.gov](mailto:olgy.diaz@dnr.wa.gov)

## Project Sites

The Safe and Sustainable Recreation request is a series of subprojects across the state that develop and improve recreation opportunities on DNR-managed lands, which see over 20 million visitor days annually.

**Recreation Improvements for Puget Sound:** Improve recreation infrastructure to increase user experience and safety while decreasing environmental impacts and user conflicts.

Projects: Tiger Summit and Green Mountain Safety Projects. Construct parking lot and Trailhead Direct shuttle stop at Tiger Summit to increase equitable access and reduce vehicle congestion and greenhouse gases. Build Green Mountain trail connections.

**Making Baker to Bellingham a Reality:** Implement tier one of the 2019 Baker to Bellingham Nonmotorized Recreation Plan.

Projects: Complete Olsen Creek Trailhead A&E design and permitting for 30 vehicle stalls and a vault toilet. Partner with Whatcom Land Trust to construct a trailhead and invests in partnership with the Nooksack Indian Tribe to develop interpretive signs.

**Investing in Rural Communities:** Increase safe and accessible water access in Northeast Washington and improve campground and trail resiliency on the Olympic Peninsula.

Projects: Install a host site at Leader Lake campground (Okanogan) to improve site protection and user experience. Improve existing facilities at Starvation Lake, Chopaka Lake, and Palmer Lake in Okanogan and Stevens Counties. Construct a day use shelter at Sadie Creek Trailhead and build new trails at Sadie Creek and Foothills.

**Improving ORV Access and Mitigating Impacts in NW Washington:** Visits to Reiter Foothills increased by 500% between 2009 and 2021 and Walker Valley has seen similar trends. Protect against further environmental degradation and increase safety for users and emergency vehicles.

Projects: Establish a new ORV Trailhead at Reiter Foothills, including 80 vehicle stalls, toilets, and a stormwater detention pond. Provide A&E design and permitting for future expansion, or relocation of current Walker Valley ORV trailhead.

**Trail and Facility Modernization in SW Washington:** Update aging recreation infrastructure to increase user experience and safety while decreasing environmental impacts and user conflicts.

Projects: Complete the North Slope Trailhead to modernize and expand the existing parking area and add a new kiosk. Install a well water system and telephone line to Cold Creek Campground Host site. Update trail systems to improve ADA access and user safety, including Jones Creek Trail System and the Tarbell Trail System.

**Central Cascades Public Access:** Update the Green Dot road system, improve bridges for tribal and public access, and implement the Naneum Ridge to Columbia River Recreation and Access Plan.

Projects: Establish permanent public access to over 34,000 acres of the Naneum Ridge State Forest from the communities of Ellensburg and Kittitas. Implement Phase 2 of an updated Green Dot Road System allowing access to 466 miles of forest road for ORV users in Yakima, Kittitas, and Chelan counties. Replace the Bird Creek Bridge for continued Tribal access and recreation on state forest land.