



WASHINGTON STATE DEPARTMENT OF
Natural Resources

Peter Goldmark - Commissioner of Public Lands



Annual Review of State Trust Lands Management Fiscal Year 2014 July 1, 2013 – June 30, 2014

A Report to the
Board of Natural Resources

Angus Brodie & Darin Cramer
February 2015



Trust Lands Topics

Fiscal Year 2014

- Aspects of Forest Management
 - Investing in our Forest Stands
 - Volume Sold/Value Earned
 - Sustainable Harvest
 - Forest Land Planning
 - Roads
- Leasing
- Transactions
- Results to Date from Increased Management Fee



Investing in Forest Stands

Fiscal Year 2014

Seed and Seedling Production:

- Woods-run collection was 34 bushels
- Seed orchard production 320 bushels
- Shipped 5.9 million seedlings for reforesting state trust lands

Forest establishment:

- Approximately 18,000 acres planted
- 92 percent of regeneration harvests are hand planted

Forest stand tending:

- 22,000 acres treated for weeds
- 10,000 acres pre-commercially thinned
- 5,000 acres commercially thinned

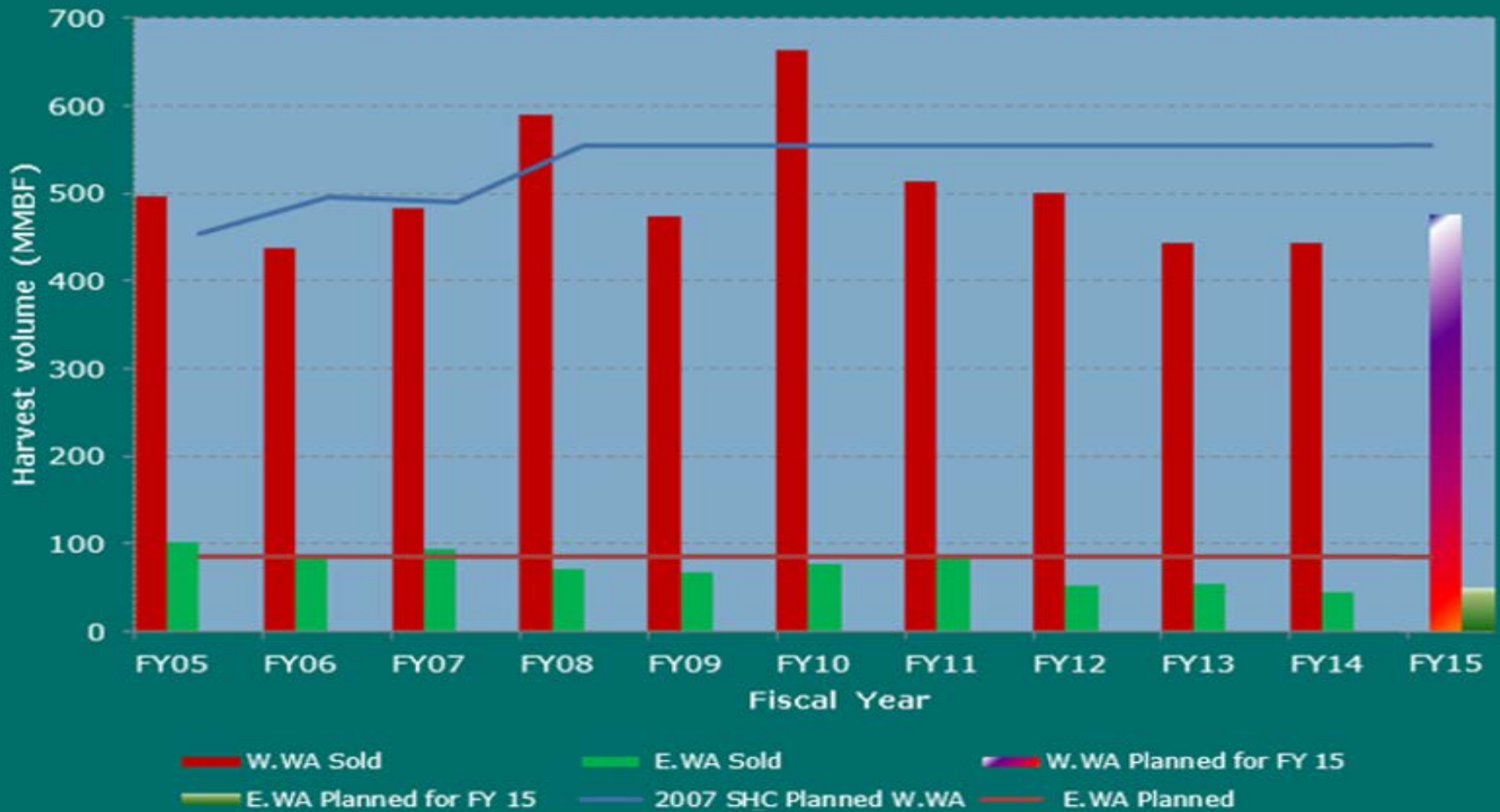


Density Management Activities on DNR managed Trust Lands

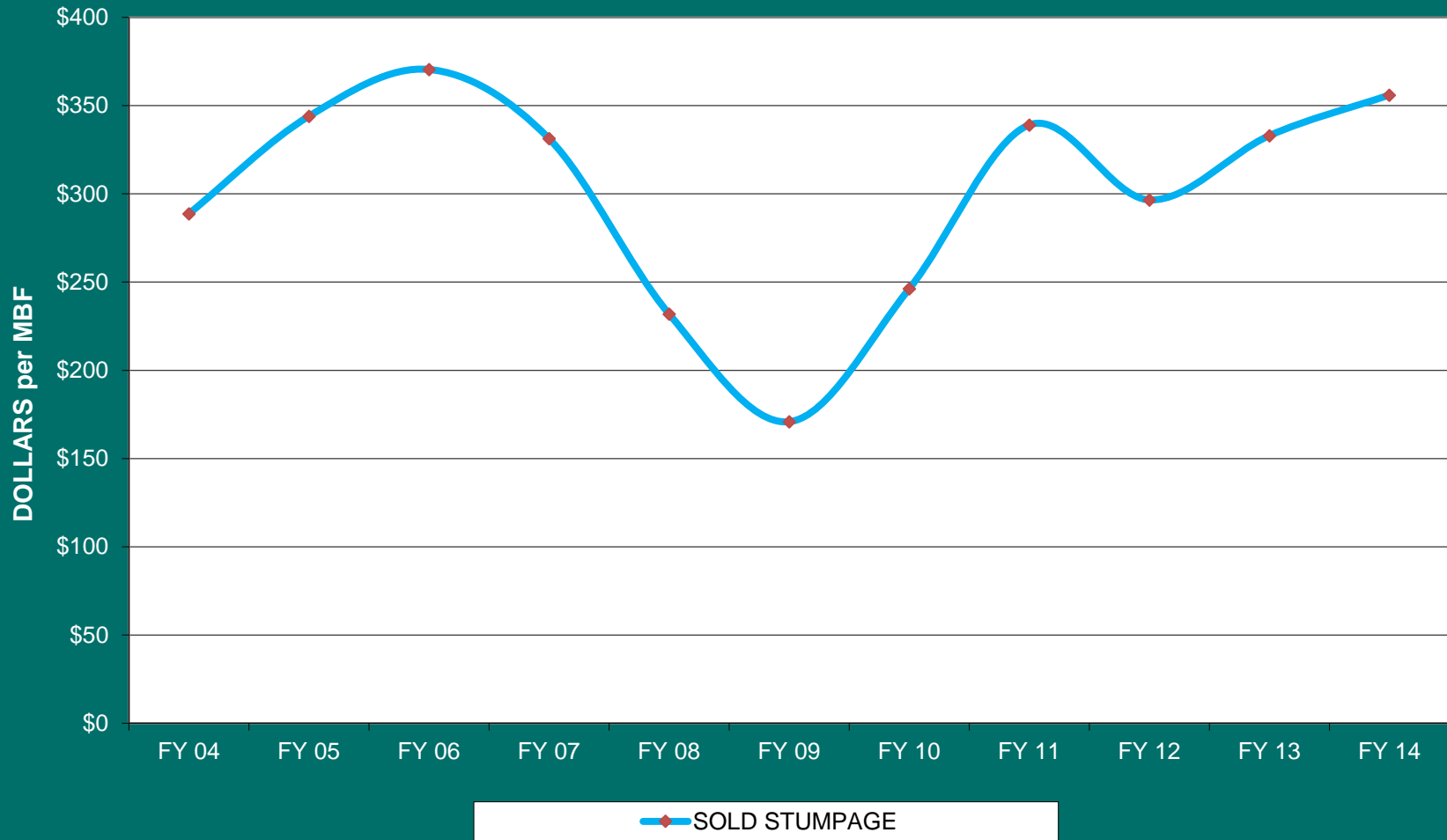


Timber Volume Sold

FY05-FY14 Sold Sales



Stumpage Sales Values FY02-FY14



Total Revenue Earned

Fiscal Year 2014

Fiscal Year 2014 – Dollars in Millions	
Leasing	\$41.8
Timber	\$151.9
Total Revenue	\$193.7

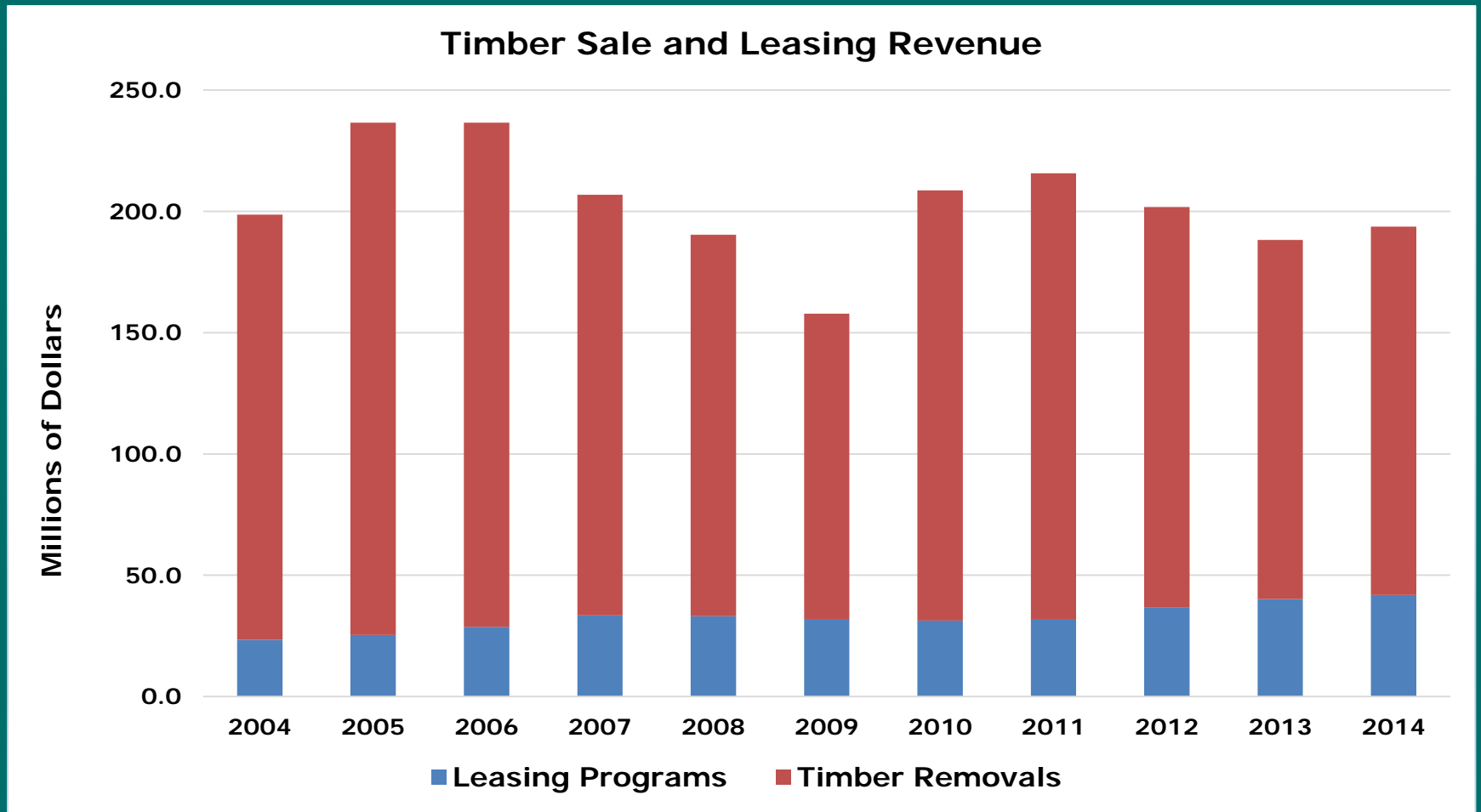


Leasing Programs Revenue Earned

Fiscal Year 2014	
Agricultural Leases	\$22,540,159
Grazing	\$1,067,515
Commercial Real Estate	\$9,596,283
Special Forest Products	\$518,243
Property Leases	\$1,885,821
Communication Sites	\$4,244,243
Minerals, Oil, & Gas	\$19,246
Rock, Sand, & Gravel	\$1,142,079
Rights of Way	\$682,670
Miscellaneous Revenue	\$141,927
Leasing Total	\$41,838,186



Total Timber & Leasing Revenue 2004-2014



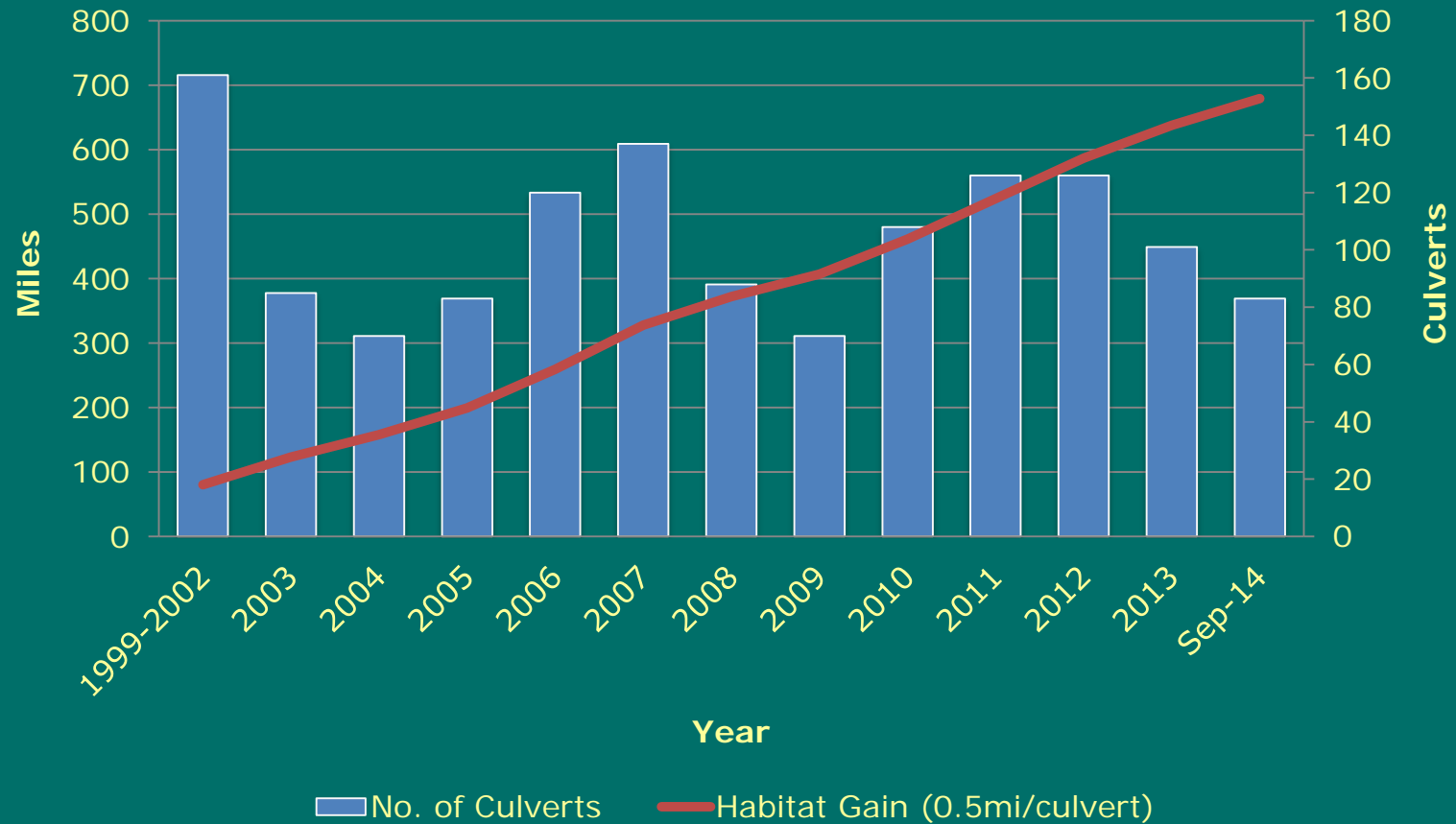
RMAPS: Before/After Example

Mill Creek



RMAPS: Fish Passage Culverts

Number of projects completed per year
Potential lineal habitat gain in miles (cumulative)



Transactions Highlights

Fiscal Year 2014

Trust acquisitions:

- 6656 acres of forest land
- 1182 acres of agriculture land

Conservation and Recreation transfers:

- Lake Whatcom block, 8420 acres
- King County Parks, 40 acres
- DNR NRCAs, 191 acres

Community Forest:

- 50,272 acres acquired in Teanaway



Ice Harbor Orchard



Fossil Creek



Teanaway

FY 2014 Purchases under \$100,000

BNR Resolution 1164

Property	Acres	Price (\$)	County	Trust	Date	Benefit
Coyle 6	6.5	80,000	Jefferson	School	10/31/13	Access to Timber
Coyle 40	40	90,000	Jefferson	School	12/6/2013	Edge holding in trust block
Blumauer Road	4.98	9800	Thurston	School	3/17/14	Edge holding in trust block
Wallitner Road	25.7	30,000	Snohomish	School	4/1/14	Edge holding in trust block

Total: 77 acres - \$209,800



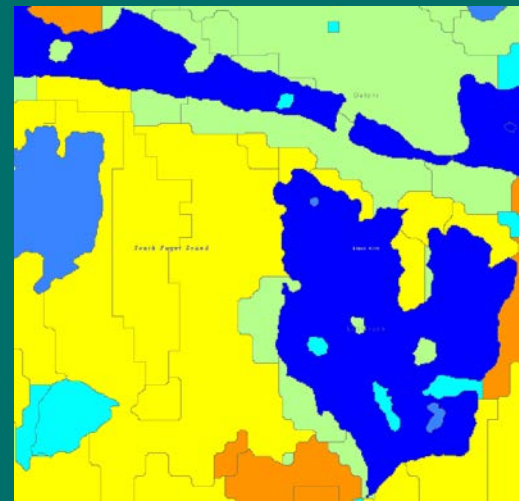
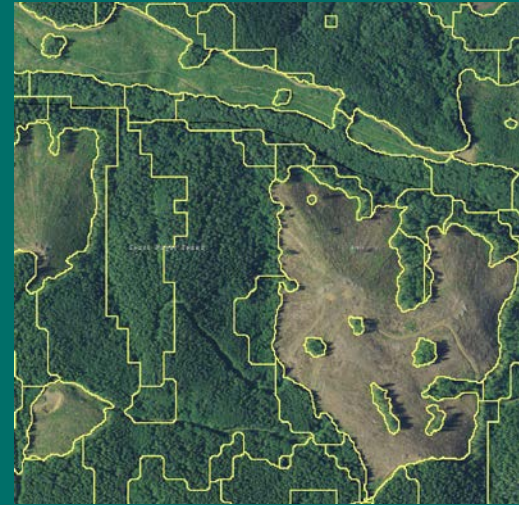


Some Results to Date from Management Fee Increase



Trust Land Investments Results to Date

- Pre-commercial thinning
 - Over 10,000 acres treated
- LiDAR for forest inventory
 - 500,000 acres of LiDAR
 - 1100 field sample plots
- Planning
 - Marbled murrelet conservation Strategy
 - Sustainable Harvest Calculation
 - OESF



Trust Land Investments Results to Date

- Secured permanent, legal access over 30 miles of road serving more than 43,000 acres
- FY15 Pending: Secure access over an additional 10 miles of road serving 35,000 acres



Trust Land Investments Results to Date

- Ag - Purchased interest in irrigation infrastructure allowing for irrigation of more than 350 acres of EWA trust land, increasing lease revenue by more than 5x
- Ag - Developing EWA grazing lease compliance/rangeland health monitoring program to ensure sustainable resource use





WASHINGTON STATE DEPARTMENT OF
Natural Resources

Peter Goldmark - Commissioner of Public Lands