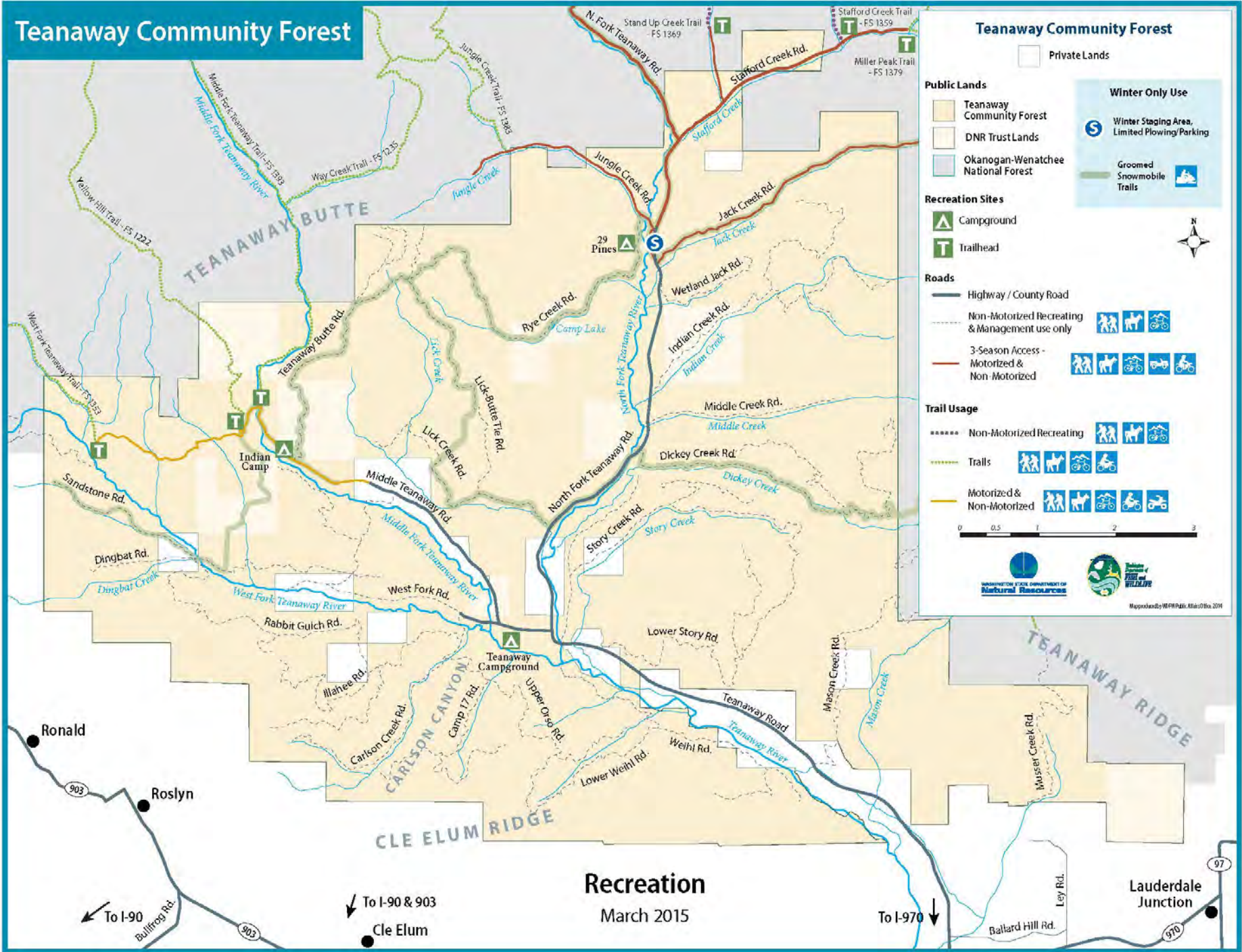


# Teanaway Community Forest Winter Recreation





# Teanaway Community Forest



## Teanaway Community Forest

**Private Lands**

**Public Lands**

- Teanaway Community Forest
- DNR Trust Lands
- Okanogan-Wenatchee National Forest

**Winter Only Use**

- Winter Staging Area, Limited Plowing/Parking
- Groomed Snowmobile Trails

**Recreation Sites**

- Campground
- Trailhead

**Roads**

- Highway / County Road
- Non-Motorized Recreating & Management use only
- 3-Season Access - Motorized & Non-Motorized

**Trail Usage**

- Non-Motorized Recreating
- Trails
- Motorized & Non-Motorized

0 0.5 1 2 3

WASHINGTON STATE DEPARTMENT OF Natural Resources

TEANAWAY COMMUNITY FOREST

Map updated by HERRMAN, K&D/3/15/2015

**Recreation**  
March 2015

To I-90  
Bullfrog Rd.

To I-90 & 903  
Cle Elum

To I-970

Lauderdale Junction

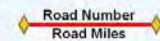


# Welcome Teaway / 29 Pines Staging Area Groomed Trail System

## Explanation

- Staging Area, Limited Plowing/Parking
- Groomed Snowmobile Trail
- Major Junction
- Restroom
- Highway
- Sno-Park Access Road
- Road
- Voluntary Non-Motorized Area
- Wenatchee National Forest
- Wilderness Area

Area has 47 miles of groomed snowmobile trails. Road number and mileage labeled between junctions.



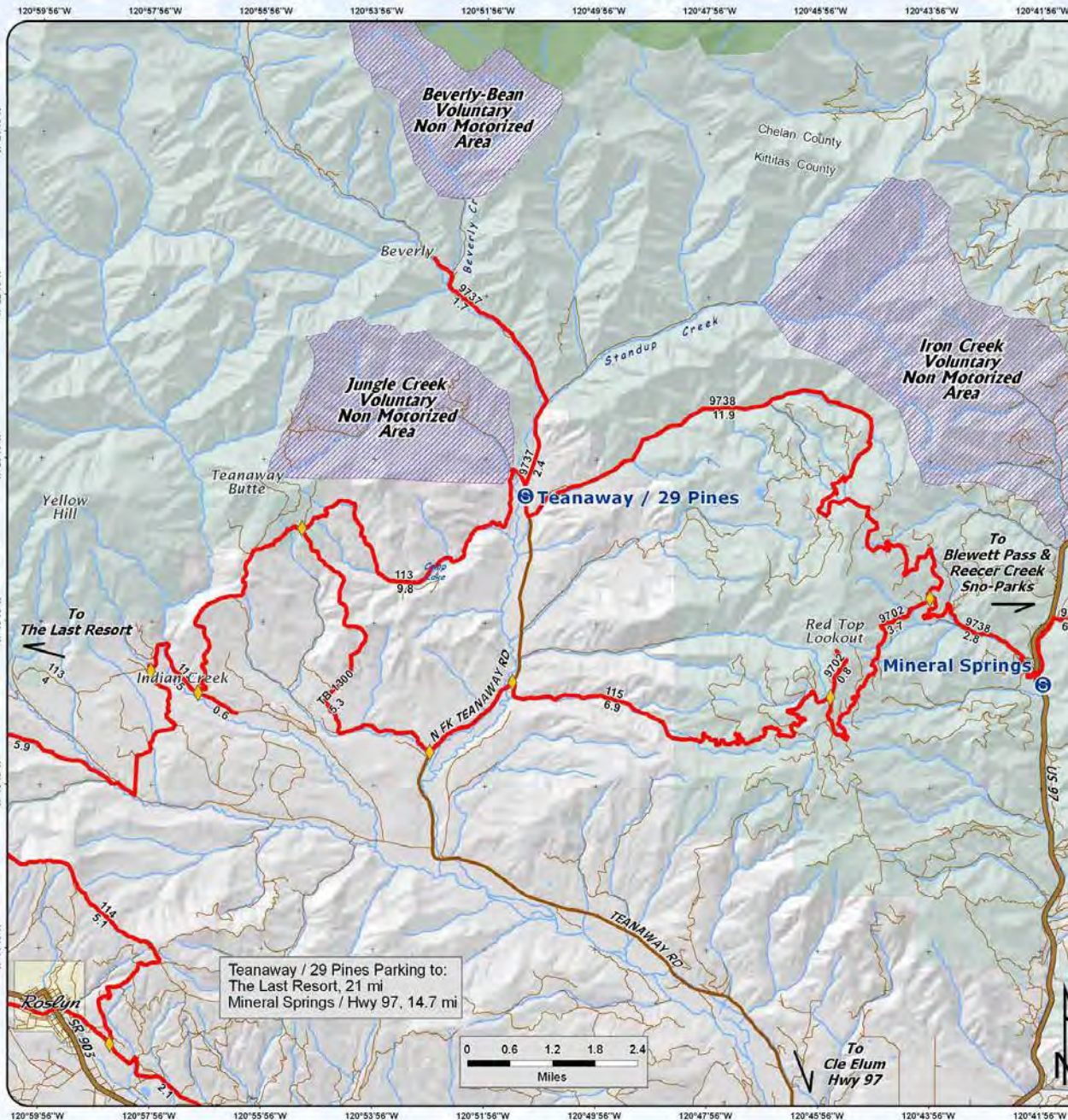
*Snow grooming equipment may be on the trail at any time.*

*Trail grooming schedules may change without notice due to snow conditions, temperatures, equipment breakdowns, etc.*

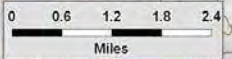
*Be aware of potential avalanche danger, check [www.nwac.us](http://www.nwac.us) before you leave home.*

*Trail grooming schedules and maps at [www.parks.wa.gov/winter](http://www.parks.wa.gov/winter)  
Please report errors or comments to: [winter@parks.wa.gov](mailto:winter@parks.wa.gov)*

**For Emergency Call 911  
Kittitas Co. Sheriff 509-925-8534**



Teaway / 29 Pines Parking to:  
The Last Resort, 21 mi  
Mineral Springs / Hwy 97, 14.7 mi



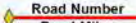



# Welcome Crystal Springs Sno-Park Groomed Trail System

## Explanation

-  Sno-Park
-  Staging Area, Limited Plowing/Parking
-  Motorized-Groomed
-  Multipurpose Groomed
-  Groomed Ski Trail
-  Marked Ski Route
-  Sled Dog Trail
-  Major Junction
-  Restroom
-  View
-  Highway
-  Sno-Park Access Road
-  Road
-  Utility Corridor
-  John Wayne Pioneer Trail
-  Ski Area, No Snowmobiling
-  Wenatchee National Forest
-  Wilderness Area, No Snowmobiling
-  State Park

**Area has 68 miles of groomed snowmobile trails. Road # and mileage labeled between junctions.**

 Road Number  
 Road Miles

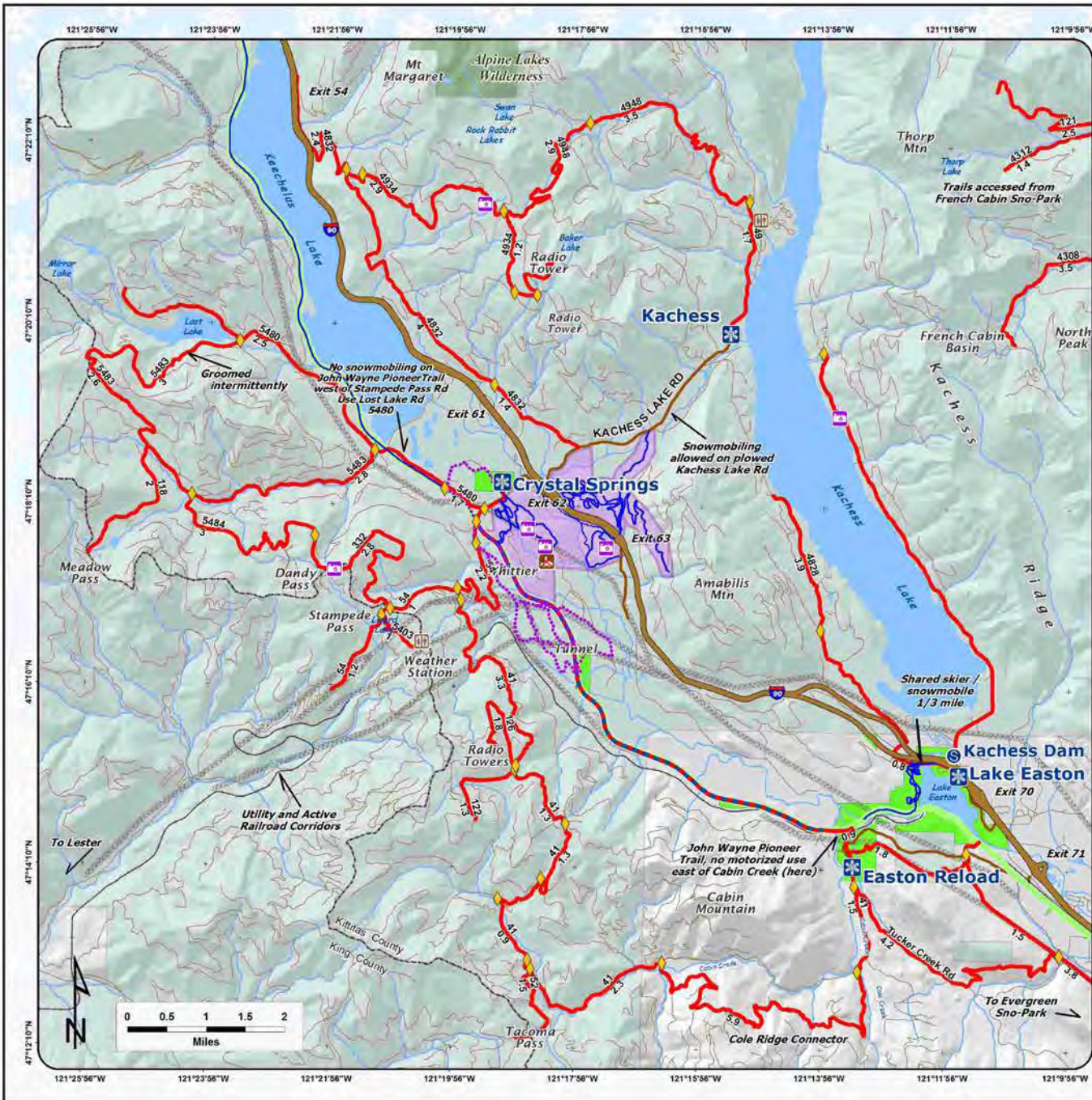
*Snow grooming equipment may be on the trail at any time.*

*Trail grooming schedules may change without notice due to snow conditions, temperatures, equipment breakdowns, etc.*

*Be aware of potential avalanche danger, check [www.nwac.us](http://www.nwac.us) before you leave home.*

*Trail grooming schedules and maps at [www.parks.wa.gov/winter](http://www.parks.wa.gov/winter)  
Please report errors or comments to: [winter@parks.wa.gov](mailto:winter@parks.wa.gov)*

**For Emergency Call 911  
Kittitas Co. Sheriff 509-925-8534**



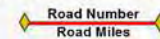


# Welcome Easton Reload Sno-Park Groomed Trail System

## Explanation

-  Sno-Park
-  Staging Area, Limited Plowing/Parking
-  Groomed Snowmobile Trail
-  Trail No Longer Groomed
-  Groomed Ski Trail
-  Sled Dog Trail
-  Major Junction, Labeled w/ Road #'s
-  Restroom
-  View
-  Highways
-  Sno-Park Access Road
-  Road
-  Utility Corridor
-  John Wayne Pioneer Trail
-  State Park
-  Wenatchee National Forest

**Area has 14 miles of groomed snowmobile trails. Road # and mileage labeled between junctions.**



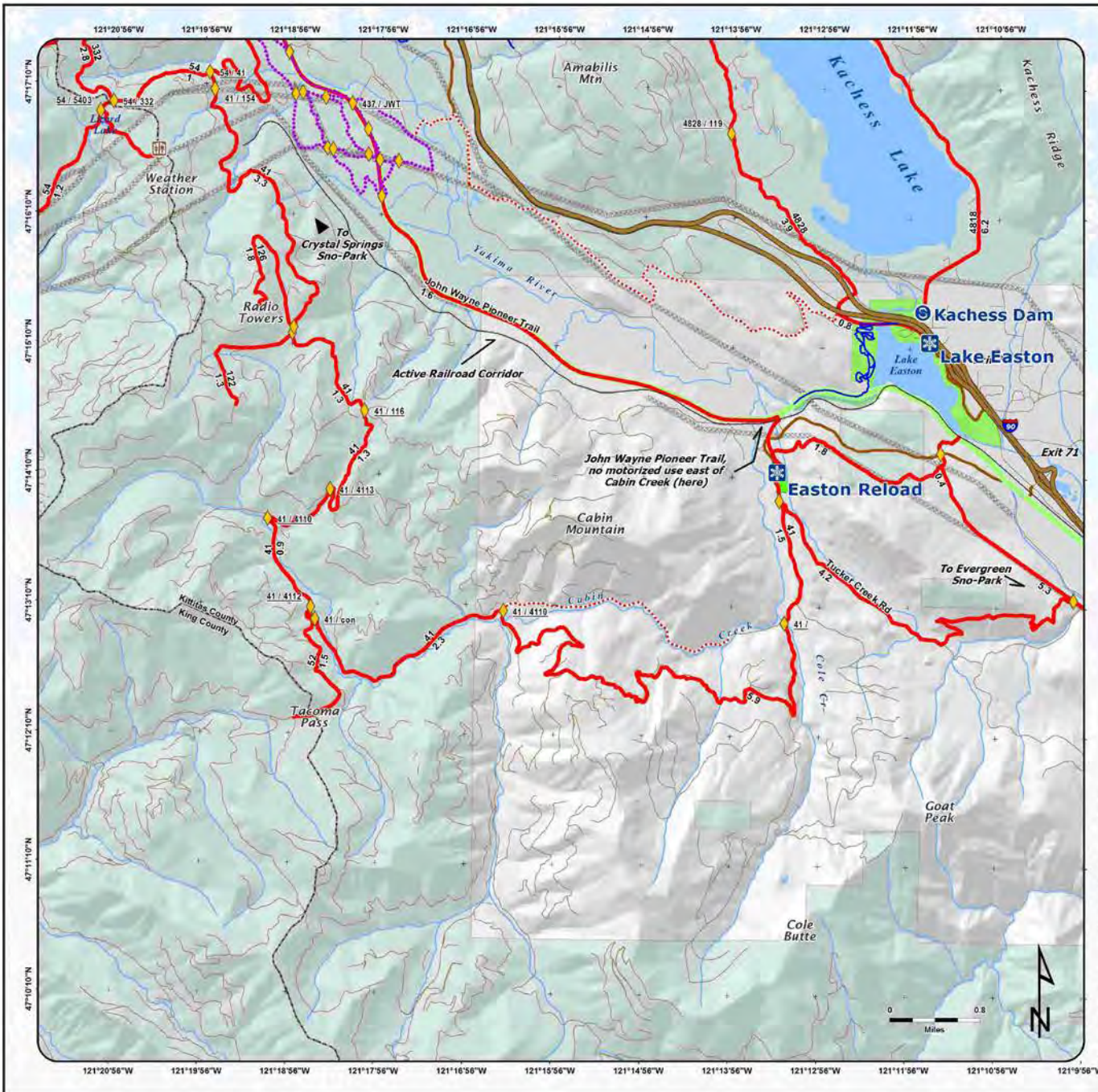
*Snow grooming equipment may be on the trail at any time.*

*Trail grooming schedules may change without notice due to snow conditions, temperatures, equipment breakdowns, etc.*

*Be aware of potential avalanche danger, check [www.nwac.us](http://www.nwac.us) before you leave home.*

*Trail grooming schedules and maps at [www.parks.wa.gov/winter](http://www.parks.wa.gov/winter)  
Please report errors or comments to: [winter@parks.wa.gov](mailto:winter@parks.wa.gov)*

**For Emergency Call 911  
Kittitas Co. Sheriff 509-925-8534**





**PLEASE REMEMBER:**

**No dogs or snowshoes on groomed ski track.  
Do not walk on the groomed trail.  
Downhill skiers have the right of way.  
Trails may become more difficult  
during icy conditions.**

-  Easiest
-  More Difficult
-  Most Difficult

Trail groomed to  
Kachess Lake Road  
2.3 km one way.  
Set with dual tracks,  
wide skating lane.

Viking Course, Berg Course  
and Boundary Loop = 6.1 km  
Mt Ozbaldy is 1.1 km.  
Track set and skating lane.

Viking Course

Berg Course

Berg Course

Berg Course

Exit 63

South Loop 1.1 km

**Cabin Creek**  
Elev. 2462'










More Parking  
Available Here

To Mt Amabilis backcountry  
Trail groomed to junction,  
3.7 km one way. Elev. 3400'

I-90 East to  
Lake Easton State Park

# Welcome Cabin Creek Sno-Park Groomed Trail System

**Explanation**

-  Non-Motorized Sno-Park
-  Groomed Ski Trail
-  Marked Ski Route
-  View
-  Shelter
-  Highway
-  Sno-Park Access Road
-  Ski Area, No Snowmobiling
-  Special grooming permit required

**Cabin Creek has 16 kilometers  
(9.7 miles) of groomed cross country  
ski trails. Special grooming permit  
required.**

Kilometers

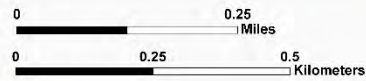
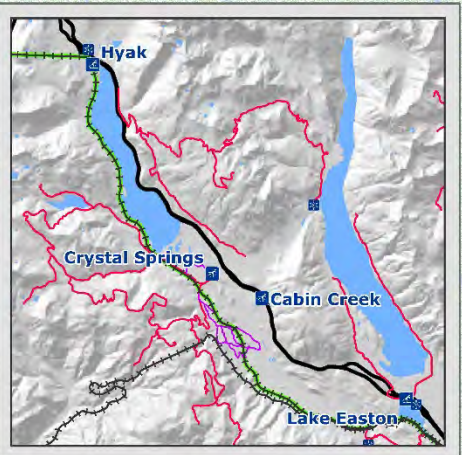
*Snow grooming equipment may  
be on the trail at any time.*

*Trail grooming schedules may change  
without notice due to snow conditions,  
temperatures, equipment breakdowns, etc.*

*Be aware of potential avalanche danger,  
check [www.nwac.us](http://www.nwac.us) before you leave home.*

*Trail grooming schedules and maps at  
[www.parks.wa.gov/winter](http://www.parks.wa.gov/winter)  
Please report errors or comments to:  
[winter@parks.wa.gov](mailto:winter@parks.wa.gov)*

**For Emergency Call 911  
Kittitas Co. Sheriff 509-925-8534**























CERTIFIED WOOD  
STRAW & FEED RESIDUES  
ON NATIONAL FORESTS









































660

4Stroke

AWES













A man on the left wearing a green baseball cap and a brown jacket stands on red snowshoes, holding a black ski pole.

A person in the center-left is wearing a dark blue jacket and a dark beanie, holding a bright pink ski pole.

A man in a bright yellow-green jacket and a grey beanie stands on snowshoes, holding a black ski pole.

A man in a grey and orange jacket and a grey beanie stands on blue skis, holding a black ski pole.

A person in a light blue jacket and a tan beanie stands with their back to the camera, holding a black ski pole.

A man on the right wearing a dark jacket and a grey beanie is looking down at a smartphone.



























