



Public Auction Sale of Timber

July 2021

Book 1025



IMPORTANT NOTICES

Natural Resources (DNR)

Governmental Regulatory Actions or Orders

The purchaser assumes the risk of liabilities related to regulatory actions or orders by any government agency that may affect the operability of these timber sales. Such regulatory actions or orders include, but are not limited to, actions taken pursuant to the State Forest Practices Act, Chapter 76.09 RCW, and the Federal Endangered Species Act, 16 U.S.C. §§ 1531-1544. Please see timber sale contract clauses G-066 and G-220 for further information.

Threatened and Endangered Species

DNR cannot verify the presence or absence of any threatened or endangered species that may affect the operability of the timber sale. Purchasers must rely on their own assessments.

Export Restricted

All timber purchased under these state DNR contracts shall not be exported outside of the United States until the timber has been processed. Purchasers shall not violate any of the prohibitions in WAC 240-15-015 (relating to the prohibitions on export and substitution), WAC 240-15-025 (relating to reporting requirements), and WAC 240-15-030 (relating to enforcement). If purchasers knowingly violate WAC 240-15-015, purchasers shall be barred from bidding on or purchasing export restricted timber as provided.

Cover photos

Timber Sales in this book are from state trust lands, managed to help build K-12 public schools, state universities, colleges, prisons, mental hospitals, the state Capitol; and to support local services in many counties.

Top right: Landscape view of DNR-managed trust lands in western Washington. Photo courtesy of DNR staff.

Second down right: Timber harvest operations on DNR-managed trust land. Photo courtesy of DNR staff.

Third down right: Log truck loaded with timber harvested from DNR-managed trust land. Photo courtesy of DNR staff.

Bottom right: Marcus Whitman Elementary School in Richland Washington. Photo courtesy of Richland School District.

Bottom middle: Storytime at the Shelton Timberland Library. Photo courtesy of Timberland Regional Library.

Bottom left: Douglas-fir seedlings growing at the Webster Nursery. Many of these seedlings will be planted following timber harvest on DNR-managed trust lands. Photo courtesy of DNR staff.

Table of Contents

Certification Opportunities for DNR Timber Purchasers	Page 3
Bidder/Purchaser Auction and Bidding Information	Page 5
Summary of All Sales Being Offered in July	Page 9
Albus	Page 11
School Bus VRH & WMZ Thin	Page 17
Big Hollow Salvage	Page 23
Elochomotive Sorts	Page 27
Unibrow	Page 33
Acme Overlook	Page 37
Puckwudgie	Page 41
Sealed Bid Form and Instructions	Page 47
Statewide Bid Bond and Instructions	Page 49
Timber Sale per Sale Bid Bond and Instructions	Page 53
Log Sort Sealed Bid Form and Instructions	Page 57



Certification Opportunities for DNR Timber Purchasers

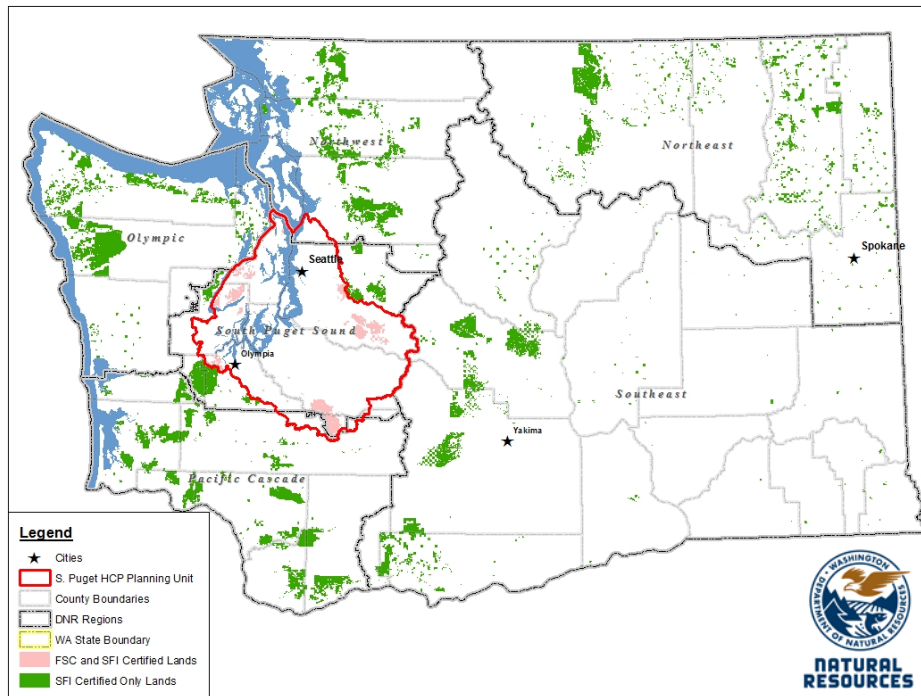
Certified forests are grown to an approved set of standards which demonstrate environmentally responsible, socially beneficial, and economically viable management practices that promote responsible forestry. This unique commitment to responsible forestry recognizes that forest landowners play a critical role in ensuring the long-term health and sustainability of our forests.

Forest Stewardship Council® (FSC®) is an independent, non-profit organization that promotes responsible management of the world's working forests through the development of forest management standards, a voluntary certification system, and trademarks that provide recognition and value to products bearing the FSC label in the marketplace. FSC standards ensure forestry is practiced in an environmentally responsible, socially beneficial, and economically viable way.

Sustainable Forestry Initiative Inc. is an independent, non-profit organization internationally endorsed and accepted around the world. The Sustainable Forestry Initiative® (SFI) program is based on the premise that responsible environmental behavior and sound business decisions can coexist. Its three-chamber Board of Directors governs all aspects of the SFI® program, with equal representation from the environmental, economic, and social sectors.

Currently, all Department of Natural Resources (DNR)-managed forestlands and conservation areas in Washington State are certified under the SFI program Standard. Forestlands within DNR's South Puget Habitat Conservation Plan Planning Unit, located within parts of King, Pierce, Thurston, Lewis, Kitsap, and Mason counties, are dually certified under both the FSC-US Forest Management Standard and the SFI program Standard.

Certification under each standard involves an inspection audit of the landowner's forest management activities by an independent, accredited third-party to verify that it meets specified forest management principles. If the forest unit complies with the specific standard, the landowner receives a certificate of conformance ensuring that responsible forestry is being practiced. Both standards encourage integration of perpetual growing and harvesting of trees with strong measures to protect wildlife, plants, soil, water, and air quality. Both standards provide a seal of approval that forests certified under these principles are well-managed. The global marketplace recognizes and endorses multiple forest certification standards. Each standard has individual market niches. By being dually certified, DNR can maximize its customer base and provide choices to the consumer.



DNR's FSC certificate number is: BV-FM/COC-080501

DNR's SFI certificate number is: PwC-SFIFM-513

DNR-managed forestlands within the South Puget Habitat Conservation Plan Planning Unit (located within parts of King, Pierce, Thurston, Lewis, Kitsap, and Mason counties) are certified as being in compliance with the Forest Stewardship US Forest Management Standard.

To learn more about chain of custody and demonstrating that your timber is derived from a responsibly managed forest and/or to learn more about becoming a participant in the FSC Program, visit <https://us.fsc.org/>.

To learn more about DNR timber sales certified under the FSC Standard, visit www.dnr.wa.gov.

FSC A.C. owns all right, title, and interest in and to the Forest Stewardship Council trademarks.

All DNR-managed forested state trust lands across the state have been certified as being in compliance with the Sustainable Forestry Initiative Forest Management Standard.

To learn more about chain of custody and demonstrating that your timber is derived from a responsibly managed forest and/or to learn more about becoming a participant in the SFI program, visit www.sfiprogram.org.

To learn more about DNR timber sales certified under the SFI program Standard, visit www.dnr.wa.gov.

SFI Marks are registered marks owned by Sustainable Forestry Initiative Inc.

To learn more about certification on DNR-managed forested state trust lands, visit <https://www.dnr.wa.gov/programs-and-services/product-sales-and-leasing/timber-sales/forest-certification> or contact:

Product Sales & Leasing Division, Product Sales Section:

Koshare Eagle, Assistant Division Manager, 360-902-1561, koshare.eagle@dnr.wa.gov
 Steve Teitzel, Operations, 360-902-1741, steve.teitzel@dnr.wa.gov

Forest Resources Division, HCP and Scientific Consultation Section:

Allen Estep, Assistant Division Manager, 360-902-2898, allen.estep@dnr.wa.gov
 Douglas Kennedy, Forest Certification Program Lead, 360-902-1283, douglas.kennedy@dnr.wa.gov

Washington State Department of Natural Resources (DNR)

Bidder's/Purchaser's Inspection of Sale Area and Forest Products

Acreage estimates and volume estimates contained within each timber notice of sale and each timber sale contract are made only for administrative and identification purposes. Except as expressly provided by the timber sale contract, the purchaser shall be responsible for paying the entire purchase price, even if the actual acreage or timber volume varies from the estimated quantity or volume shown.

All prospective bidders have the opportunity and are expected to inspect the sale area and the forest products located thereon. Bidders shall not rely on any representations by the State including, but not limited to, acreage estimates, volume estimates, appraisal or pre-bid documentation. The successful bidder/purchaser will further warrant that they have entered the timber sale contract without any reliance upon the DNR's volume estimates, acreage estimates, appraisals, pre-bid documentation, or any other representation by the DNR.

Any timber sale contract arising out of these public auctions will require the successful purchaser to warrant that they are entering the timber sale contract based solely upon their own judgment of the value of the forest products, formed after their own examination and inspection of both the timber sale area and the forest products being sold.

Exclusion and Disclaimer of Warranties

The PARTIES AGREE that the IMPLIED WARRANTIES OF MERCHANTABILITY AND FITNESS FOR A PARTICULAR PURPOSE, and ALL OTHER WARRANTIES EXPRESS OR IMPLIED, ARE EXCLUDED from this transaction, and shall not apply to the goods sold. For example, THE FOLLOWING SPECIFIC MATTERS ARE NOT WARRANTED, and are EXCLUDED from this transaction:

- A. ***The merchantability of the forest products.*** The use of the term "merchantable" in any document is not intended to vary the foregoing.
- B. ***The condition of the forest products.*** All forest products will be conveyed "AS IS."
- C. ***The acreage contained within any sale area.*** Any acreage descriptions appearing in the timber notices of sale, timber sale contract, timber sale map or other documents are estimates only, provided solely for administrative and identification purposes.
- D. ***The volume, quality, or grade of the forest products.*** The descriptions of the forest products to be conveyed are estimates only, made solely for administrative and identification purposes.
- E. ***The correctness of any soil or surface conditions, presale construction appraisals, investigations, and all other pre-bid documents prepared by or for the State.*** These documents have been prepared for the State's appraisal purposes only.
- F. ***That the sale area is free from threatened or endangered species, or their habitat.*** The State is not responsible for any interferences with forestry operations that result from the presence of any threatened or endangered species, or the presence of their habitat, within the sale area.
- G. That the forestry operations to be performed under this contract will be free from regulatory actions by governmental agencies. The State is not responsible for actions to enforce regulatory laws, such as the Washington Forest Practices Act (Chapter 76.09 RCW), taken by the Department of Natural Resources or any other agency that may affect the operability of these timber sales.
- H. Items contained in any other documents prepared for or by the State.

Please also see timber sale contract clause G-060 for further information.

BIDDING PROCEDURES FOR TIMBER AUCTIONS

The general requirements that follow are a part of all Timber Notices of Sale to be auctioned by the Department of Natural Resources (DNR).

General Information

The State reserves the right to waive minor irregularities and the right to reject any or all bids.

- A. This book contains the timber notices of sale and maps for each timber sale scheduled to be auctioned. More specific information can be obtained by contacting the appropriate region office at the number listed on the back cover of this book. Sales may be added to each monthly auction by the Department which are not included in this publication. This publication is not updated following original production.
- B. The timber notice of sale is a summary of sale information. For more specific information, interested parties are encouraged to view the Auction Packets on www.dnr.wa.gov. Auction Packets contain **DRAFT** copies of the timber notice of sale, map, contract, road plan, cruise data, precruise and cruise narrative, and other associated documents.
- C. Timber sale auction packets may also be obtained at no charge for individual sales by visiting the appropriate region office.
- D. Timber sale contracts contain extensive terms and conditions that will be binding upon successful high bidders. Each bidder should carefully review all terms contained in the appropriate **DRAFT** timber sale contract prior to bidding on a sale, and should review the final contract prior to signing. **DRAFT** timber sale contracts are contained in the auction packets and are available upon request at the respective region office.
- E. Sales advertised in this book are subject to the Board of Natural Resources approval before they will be sold. The Board meets and approves sales approximately six weeks prior to auction.
- F. The State does not guarantee the accuracy of any information contained herein pertaining to particular sales. Therefore, all prospective purchasers are expected to make their own independent inspections and appraisals prior to bidding.
- G. If any conflict exists between the information in the Timber Notice of Sale, timber sale map, sale auction packets and that in the timber sale contract, the signed contract will prevail.
- H. Purchasers must pay the Forest Excise Tax on the bid price, permanent road construction costs, and other considerations. The tax rate is 5% without the EARR credit and 4.2% with the credit. For more information contact the Department of Revenue, Forest Tax Section at 1-800-548-8829.
- I. **All sales are subject to confirmation by the DNR under RCW 79.15.120.**
- J. **Within 30 days of sale confirmation, the apparent high bidder will provide to the State the Performance Security specified on each Notice of Sale. The successful bidder also agrees to return a signed contract to the State within 30 days of confirmation.** Failure to provide a signed contract to the state within 30 days of confirmation may result in a loss of bidder's rights to the products sold and forfeiture of initial deposit moneys.
- K. Each DNR region office has information about sales offered in that region. For further information, contact the respective DNR region office. Region office addresses and telephone numbers appear on the back cover of this booklet.
- L. The purchaser assumes the responsibility for any costs associated with extra maintenance or repair levied by a county for any county road used by the purchaser.

Auction Time and Location

Auctions will start at 10:00 a.m. and close at 4:00 p.m. on the date and at the location specified in each Timber Notice of Sale.

Bidding Process

- A. All timber will be auctioned using the sealed bid method.
- B. Bids submitted on day of auction must be in the bid box at the specified auction location before 10:00 a.m. The respective DNR region office must receive mailed bids by 4:30 p.m., on the last business day before the auction. Bidders assume all risk for the method of delivery.
- C. The DNR has the right to reject bid forms that are completed incorrectly. *All bid forms must have an original signature on behalf of the person or entity submitting the bid, and must be on the form provided in this booklet or a photocopy thereof. Revised documents are not permissible.* Bidding instructions are on the back of the Sealed Bid Form. A bid deposit must be included in the sealed bid envelope unless using a Timber Sale Statewide Bid Bond.
- D. All bids must include the completed Sealed Bid Form and bid deposit.
- E. Bids will be opened in each respective region in the order in which sales appear in the Public Auction Sale of Timber book (alphabetically by county and by agreement number). Sales added after the book is printed will be inserted to retain this order. Sort sales may be auctioned out of this sequence at the State's convenience.
- F. If a tie bid occurs, the names of the tie bidders will be placed in a hat and the successful bidder will be determined by a drawing.
- G. Opportunities to Withdraw Bids:
For all sales offered on a stumpage basis only, the apparent high bidder on a particular sale will have the option of withdrawing additional sealed bids submitted for any remaining sales to be auctioned. The apparent high bidder must exercise this option within two minutes after the apparent high bidder is announced. This option is not available for sales offered on a delivered basis.

Eligibility to Bid

The following criteria must be met in order to bid on State timber sales:

- 18 years of age (or have a co-signer who meets the eligibility requirements)
- Licensed to do business in the State of Washington
- Eligible to bid on Export Restricted timber
- Authorized to submit bids

Authorized Representatives

Company officers or company authorized representatives may bid on State sales, sign State documents, or sign checks. A list of authorized representatives and their specific authorities must be submitted, in writing, to the Department of Natural Resources, Product Sales and Leasing Division, P.O. Box 47014, Olympia, Washington, 98504-7014, ten days in advance of the auction. *A company owner or officer must sign this submittal.*

Bid Deposits

- A. Required bid deposits are listed on each Timber Notice of Sale.
- B. Bid deposits must be in the form of cash, certified check, cashiers' check, money order or bid bond.
- C. Bid bonds may be either a Timber Sale Per Sale Bid Bond or a Timber Sale Statewide Bid Bond.
- D. All bid deposits shall be submitted by the person or entity submitting the bid and made payable to the Department of Natural Resources. **Third party deposits will not be accepted.**

Timber Sale Per Sale Bid Bonds

- A. The Per Sale Bid Bond shall guarantee payment of the bid deposit **within ten days of auction.**
- B. The balance between the bid bond and the Initial Deposit payment is due **by 4:30 p.m., on the day of auction.**
- C. Additional forms and instructions for a Per Sale Bid Bond are available at any DNR region office.

Timber Sale Statewide Bid Bond

- A. Statewide Bid Bonds shall guarantee payment of the Initial Deposit on any statewide timber sale while the bond is in effect.
- B. The Statewide Bid Bond must be received by the Department of Natural Resources, Product Sales and Leasing Division, P.O. Box 47014, Olympia, Washington, 98504-7014, ten days in advance of the auction date. The bond shall be in the amount of \$150,000.00.
- C. Successful bidders using a Statewide Bid Bond must pay the total Initial Deposit payment (10% of the total bid price) **by 4:30 p.m., on the day of the auction.**
- D. A Statewide Bid Bond cannot be used to secure the Initial Deposit payment due the day of auction.
- E. Additional forms and instructions for a statewide bid bond are available at any DNR region office.

Payments

The initial deposit for a sale is 10% of the total bid value as submitted by the apparent high bidder (25% if the bidder is a defaulter as defined under WAC 332-140-300) and never less than \$5,000.00 for lump sum sales. For Lump Sum sales appraised at less than \$5,000.00, the entire bid value is due on day of auction.

- A. Apparent high bidders using cash, certified check, cashiers' check or money order as a bid deposit must pay the total Initial Deposit amount by 4:30 p.m. on auction day.
- B. Apparent high bidders using a Timber Sale Per Sale Bid Bond as a bid deposit must pay the difference between the bid deposit and the total initial deposit by 4:30 p.m., on the day of auction. The bid bond amount must be replaced with a certified check, cashiers' check, bank draft, cash, money order, or wire transfer within ten days of the auction.
- C. Apparent high bidders using a Timber Sale Statewide Bid Bond must pay the entire Initial Deposit amount by 4:30 p.m. on the day of auction.
- D. All payments must be in the form of a certified check, cashiers' check, bank draft, cash, money order or wire transfer.



Summary Report of All Sales for the Month of July 2021

Board Sales

<u>County</u>	<u>Region</u>	<u>Agree #</u>	<u>FSC® Sale Name</u>	<u>Volume</u>	<u>Value</u>
Grays Harbor	South Puget	101104	ALBUS	4,729	\$1,922,000.00
King	South Puget	101111	SCHOOL BUS VRH & WMZ THIN	6,775	\$2,793,000.00
Skamania	Pacific Cascade	101695	BIG HOLLOW SALVAGE	1,874	\$433,000.00
Wahkiakum	Pacific Cascade	101651	ELOCHOMOTIVE SORTS	4,837	\$3,044,665.00
Wahkiakum	Pacific Cascade	101956	UNIBROW	1,103	\$498,000.00
Whatcom	Northwest	101186	ACME OVERLOOK	3,035	\$1,433,000.00
Whatcom	Northwest	101217	PUCKWUDGIE	2,611	\$1,047,000.00
Total				===== 24,964	===== \$11,170,665.00



*Scan with your smartphone or tablet to go
to the July 2021 timber auction page*



TIMBER NOTICE OF SALE

SALE NAME: ALBUS

AGREEMENT NO: 30-101104

AUCTION: July 27, 2021 starting at 10:00 a.m., **COUNTY:** Grays Harbor
South Puget Sound Region Office, Enumclaw, WA

SALE LOCATION: Sale located approximately 8 miles northeast of Oakville.

**PRODUCTS SOLD
AND SALE AREA:**

All timber, except leave trees bounded out by yellow leave tree area tags, trees marked with blue paint, snags, and down timber existing more than 5 years from the day of sale, bounded by the following: white Timber Sale Boundary tags and the D-2000 Road in Unit #1;

All timber, except leave trees bounded out by yellow leave tree area tags, snags, and down timber existing more than 5 years from the day of sale, bounded by the following: white Timber Sale Boundary tags and the D-2210 Road in Unit #2; white Timber Sale Boundary tags and the D-2000 Road in Unit #3;

All timber bounded by orange right of way tags in Units #4, #5, and #6, except that title to the timber within the right of way boundary tags is not conveyed to the Purchaser unless the associated D-2212 or D-2021 Road is actually constructed, or the associated D-2010 Road is actually reconstructed.

All forest products above located on part(s) of Sections 3, 4, 9 and 10 all in Township 16 North, Range 4 West, Sections 33 all in Township 17 North, Range 4 West, W.M., containing 169 acres, more or less.

CERTIFICATION: This sale is certified under the Sustainable Forestry Initiative® program Standard (cert no: PwC-SFIFM-513)

ESTIMATED SALE VOLUMES AND QUALITY:

Species	Avg DBH	Ring Count	Total MBF	MBF by Grade								
				1P	2P	3P	SM	1S	2S	3S	4S	UT
Douglas fir	19.6	5	4,134				28		2,217	1,567	233	89
Hemlock	23.4		533						374	127	14	18
Red alder	11.6		49							15	33	1
Maple	19		10						2	3	3	2
Red cedar	15.6		3							3		
Sale Total			4,729									

MINIMUM BID: \$1,922,000.00 **BID METHOD:** Sealed Bids

PERFORMANCE SECURITY: \$150,000.00 **SALE TYPE:** Lump Sum

EXPIRATION DATE: October 31, 2023 **ALLOCATION:** Export Restricted

BID DEPOSIT: \$192,200.00 or Bid Bond. Said deposit shall constitute an opening bid at the appraised price.



TIMBER NOTICE OF SALE

HARVEST METHOD: Harvesting activities are estimated to be 100 percent ground based harvest. Cable, tethered, and ground based equipment with non-tethered self-leveling tracked equipment limited to sustained slopes 65 percent or less and other tracked equipment and 6-wheeled rubber tired skidders with over-the-tire tracks spanning both sets of rear tires on sustained slopes that are 45 percent or less. Standard rubber tired skidders allowed on designated skid trail marked with orange flagging in Unit #1 only. Yarding may be restricted during wet weather if rutting becomes excessive, per clause H-017.

ROADS: 61.72 stations of optional construction. 9.00 stations of optional reconstruction. 52.46 stations of required prehaul maintenance. 61.72 stations of abandonment, if constructed. 9.00 stations of abandonment, if reconstructed. Purchaser maintenance on the D-2005, D-2010, D-2020, D-2021, D-2200, D-2210, D-2212, and D-2048 roads. Designated maintenance on all other roads used.

Rock for this proposal may be obtained from the State owned Low Bank Quarry, Albus Quarry, or Voyager Quarry, as well as from the existing stockpile at the Low Bank Quarry, at no cost to the Purchaser or any commercial rock source at the Purchaser's expense.

The operation of road construction equipment is not allowed on weekends or State recognized holidays, unless authorized in writing by the Contract Administrator. In addition, the culvert replacement on the D-Line from station 259+29 to 259+79 will not be permitted October 1 to July 31 unless authorized in writing by the State.

The hauling of forest products will not be permitted from November 1 to April 30 unless authorized in writing by the Contract Administrator. If permission is granted to operate from November 1 to April 30, preventative measures may be required to protect water, soil, roads and other forest assets.

ACREAGE DETERMINATION

CRUISE METHOD: Acreage was determined by traversing boundaries by GPS in all units and length times width in Units #4, #5, and #6. GPS data files are available at DNR's website for timber sale auction packets. See cruise narrative for cruise method.

FEES: \$80,393.00 is due on day of sale. \$9.00 per MBF is due upon removal. These are in addition to the bid price.

SPECIAL REMARKS: This sale contains high quality Douglas-fir, see cruise for details.

Purchaser shall cut all hardwood stems greater than 2 inches dbh within the harvest units leaving a stump no more than 12 inches in height.

Compaction requirements for the fish culvert on the D-Line at station 259+54 are located in Section 4, clauses 4-64 to 4-67 in the Road Plan.

Tailhold locations are restricted due to protection of potentially unstable slopes. Trees shall not be used as tailholds within non-tradeable leave tree clumps within the sale area, or locations identified as Slope Stability Mitigation Zones on the Logging Plan Map. Stringing cables through and suspending cables over these areas are allowed with approval by the Contract Administrator (CA). Tailhold locations and cable corridors for all units shall be addressed in a harvest plan by the Purchaser and approved in writing by the CA prior to the start of operations.



TIMBER NOTICE OF SALE

Type 5 stream crossing locations for yarding shall be identified and marked in the field by the Purchaser and approved in writing by the CA prior to the start of operations.

Standard rubber tired skidders shall be allowed only on the designated skid trail marked with orange flagging in Unit #1. The location of the trail may be altered pending CA approval. The designated skid trail in Unit #1 will be closed after use, with water bars every 10 vertical feet to intercept flow, or as directed by CA.

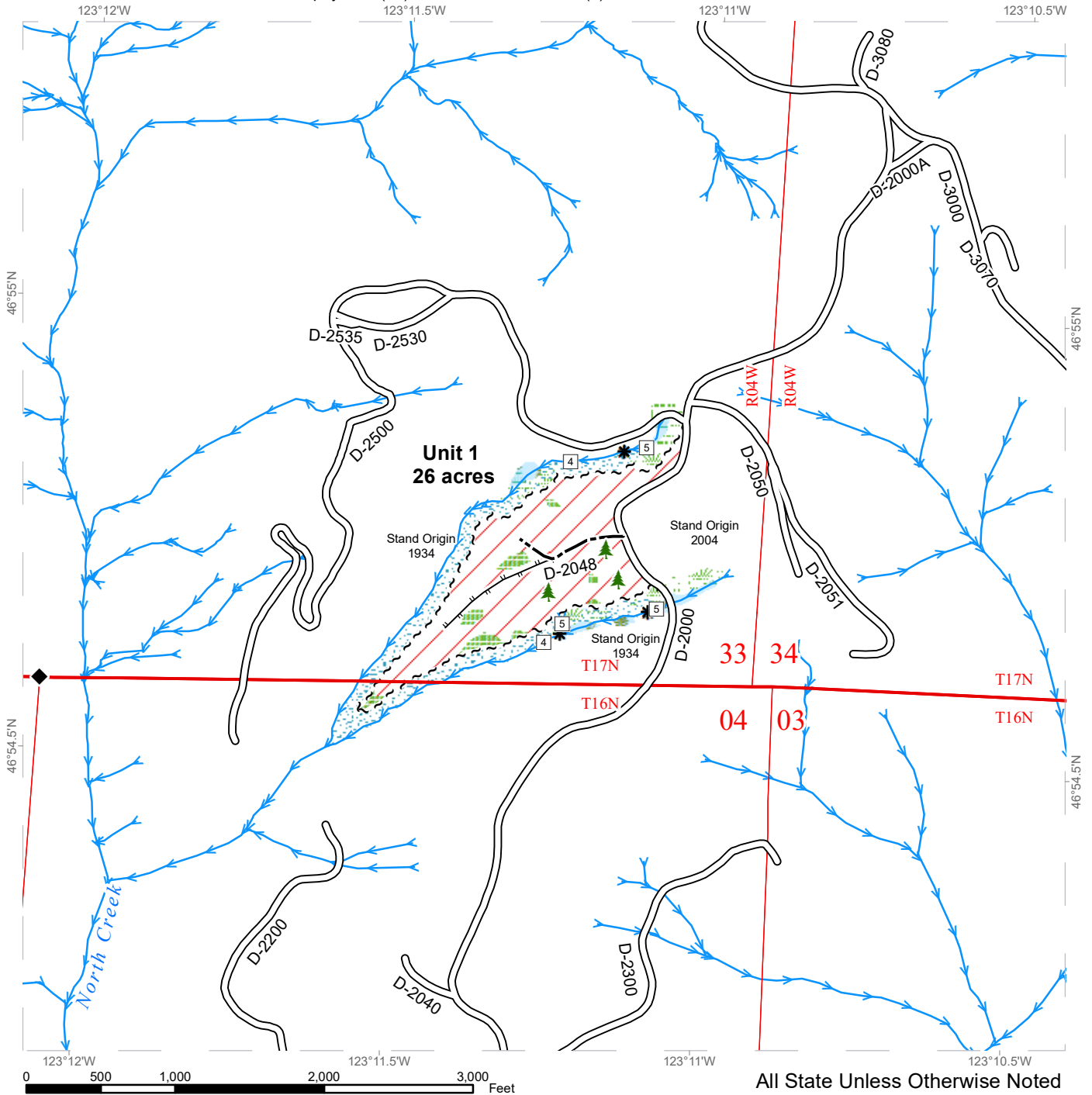
Landings shall be marked by Purchaser and approved in writing by the CA prior to construction in accordance with C-080.

For the safety of the public, please remove from roads and trails all string from string boxes used during appraising or cruising this sale.

TIMBER SALE MAP

SALE NAME: ALBUS
AGREEMENT #: 30-101104
TOWNSHIP(S): T16R4W, T17R4W
TRUST(S): Forest Board Repayment (42), State Forest Purchase (2)

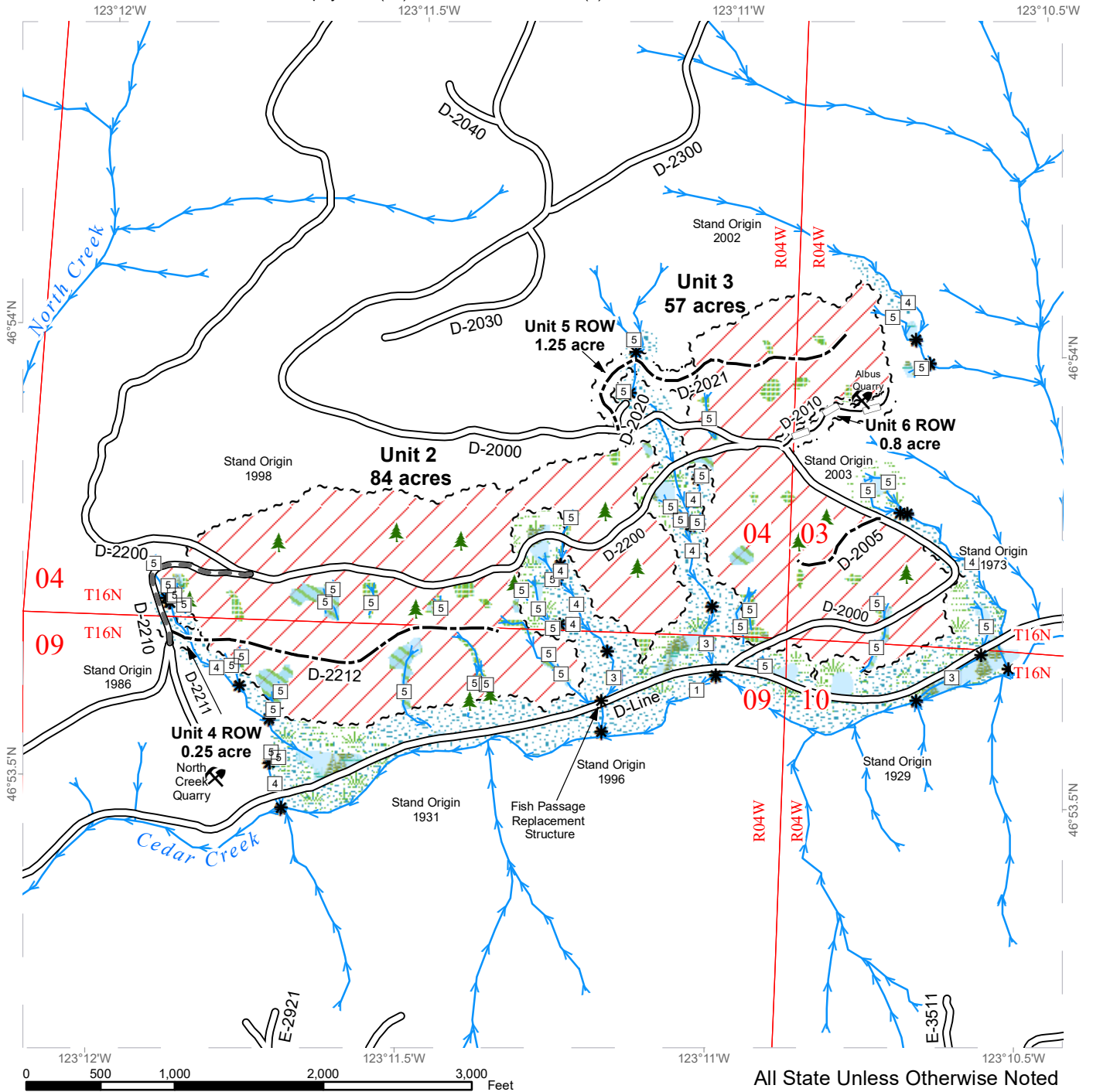
REGION: South Puget Sound Region
COUNTY(S): Grays Harbor
ELEVATION RGE: 320-1640



TIMBER SALE MAP

SALE NAME: ALBUS
AGREEMENT #: 30-101104
TOWNSHIP(S): T16R4W, T17R4W
TRUST(S): Forest Board Repayment (42), State Forest Purchase (2)

REGION: South Puget Sound Region
COUNTY(S): Grays Harbor
ELEVATION RGE: 320-1640



All State Unless Otherwise Noted

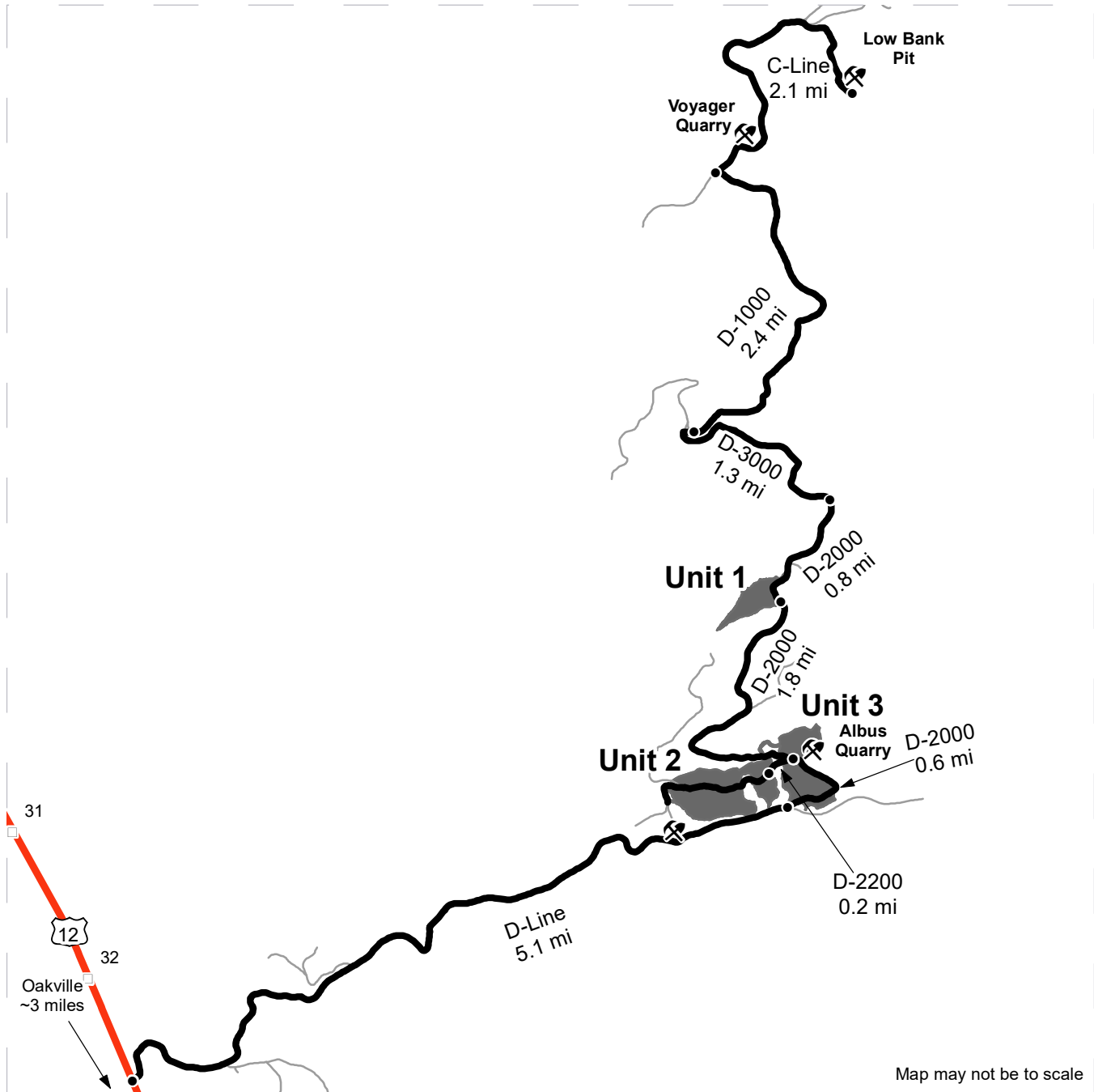
	Variable Retention Harvest		Existing Roads		Streams
	Riparian Mgt Zone		Required Pre-Haul Maintenance		Stream Type
	Forested Wetland		Optional Construction		Stream Type Break
	Wetland Mgt Zone		Optional Reconstruction		Leave Tree Area <1/4-acre
	Leave Tree Area		Sale Boundary Tags		Rock Pit
	Non-Tradeable Leave Tree Area		Right of Way Tags		



DRIVING MAP

SALE NAME: ALBUS
AGREEMENT#: 30-101104
TOWNSHIP(S): T16R4W, T17R4W
TRUST(S): Forest Board Repayment (42), State Forest Purchase (2)

REGION: South Puget Sound Region
COUNTY(S): Grays Harbor
ELEVATION RGE: 320-1640



Map may not be to scale

	Timber Sale Unit
	Highway
	Haul Route
	Other Road
	Milepost Markers
	Distance Indicator
	Rock Pit

DRIVING DIRECTIONS:

- Unit 3: From Highway 12, between milepost 32 and 33, turn right (East) onto the D-Line. Continue for 5.1 miles, then turn left onto the D-2000 to reach Unit 3.
- Unit 2: From Unit 3, continue on the D-2000 for 0.6 miles, to reach the intersection with the D-2200. From the intersection, take the left fork onto the D-2200, and continue for 0.2 miles to reach Unit 2.
- Unit 1: From the intersection of the D-2000 and D-2200, take the right fork onto the D-2000 and continue for 1.8 miles to reach Unit 1
- Voyager Quarry and Low Bank Rock Pit: From Unit 1, continue on the D-2000 for 0.8 miles. Take the left fork onto the D-3000 and continue for 1.3 miles. At the intersection, take the right fork onto the D-1000 and continue for 2.4 miles. At the intersection with the C-line, turn right and continue for 0.3 miles for Voyager Quarry, or 2.1 miles to reach Low Bank Pit.





TIMBER NOTICE OF SALE

SALE NAME: SCHOOL BUS VRH & WMZ THIN

AGREEMENT NO: 30-101111

AUCTION: July 27, 2021 starting at 10:00 a.m., **COUNTY:** King
South Puget Sound Region Office, Enumclaw, WA

SALE LOCATION: Sale located approximately 11 miles northeast of Carnation.

**PRODUCTS SOLD
AND SALE AREA:**

All timber, except trees marked with blue paint or bounded out by yellow leave tree area tags, snags, and down timber existing more than 5 years from the day of sale, bounded by the following: white timber sale boundary tags, blue special management area tags, and the 2000 Road in Unit #1; white timber sale boundary tags, and blue special management area tags in Unit #2; blue special management area tags, and the 2300 and 2540 roads in Unit #3; white timber sale boundary tags and the 5000 Road in Units #4 and #5; white timber sale boundary tags, private property line marked with Carsonite posts, and Stossel Creek Road in Unit #6;

All timber as described in Schedule A bounded by the following: white timber sale boundary tags, blue special management area tags, and the 2000 Road in Unit #7; white timber sale boundary tags, blue special management area tags, and the 2300, and 2540 roads in Unit #8;

All timber marked with orange right of way tags, except that title to timber within the right of way tags is not conveyed to the Purchaser unless the road segment is actually constructed in Units #9, #10, and #11;

All forest products above located on part(s) of Sections 1, 11 and 12 all in Township 26 North, Range 7 East, W.M., containing 236 acres, more or less.

CERTIFICATION: This sale is certified under the Sustainable Forestry Initiative® program Standard (cert no: PwC-SFIFM-513)

ESTIMATED SALE VOLUMES AND QUALITY:

Species	Avg DBH	Ring Count	Total MBF	MBF by Grade								
				1P	2P	3P	SM	1S	2S	3S	4S	UT
Douglas fir	19.1	6	4,957			140	307		1,934	2,023	543	10
Hemlock	18.2		1,267						686	433	148	
Red cedar	20.1		421							381	40	
Maple	14.1		103						29	12	62	
Cottonwood	18.5		21					9	5		7	
Red alder	24		6						4		2	
Sale Total			6,775									

MINIMUM BID: \$2,793,000.00 **BID METHOD:** Sealed Bids

PERFORMANCE SECURITY: \$100,000.00 **SALE TYPE:** Lump Sum

EXPIRATION DATE: October 31, 2023 **ALLOCATION:** Export Restricted



TIMBER NOTICE OF SALE

- BID DEPOSIT:** \$279,300.00 or Bid Bond. Said deposit shall constitute an opening bid at the appraised price.
- HARVEST METHOD:** Harvest activities are estimated to be 100 percent ground based harvest. Tracked ground based equipment, with self-leveling equipment limited to sustained slopes 65 percent or less, and all other tracked ground based equipment limited to sustained slopes 45 percent or less. Yarding may be restricted during wet weather if rutting becomes excessive, per clause H-017.
- ROADS:** 55.03 stations of optional construction. 70.90 stations of optional reconstruction. 339.93 stations of required prehaul maintenance. 6.55 stations of optional prehaul maintenance. 31.35 stations of abandonment, if constructed. 3.33 stations of heavy abandonment, if constructed. 11.98 stations of abandonment, if reconstructed. Purchaser maintenance on all roads used.
- Rock for this proposal can be obtained from the State owned 5050 Pit at no cost to the Purchaser or any commercial rock source at the Purchaser's expense. Rock source development is required per Section 6 in the Road Plan and according to the Rock Source Development Plan if rock is obtained from the 5050 Pit.
- Operation of road construction equipment and rock haul will not be permitted from November 1 to April 30, unless authority to do so is granted, in writing, by the Contract Administrator. If permission is granted to operate from November 1 to April 30, the Purchaser shall comply with a maintenance plan per Road Plan clause 1-26.
- The hauling of forest products will not be permitted from November 1 to April 30 unless authorized in writing by the Contract Administrator. If permission is granted to operate from November 1 to April 30, preventative measures may be required to protect water, soil, roads and other forest assets.
- ACREAGE DETERMINATION**
- CRUISE METHOD:** Unit acreage was determined by traversing boundaries by GPS and length times width was used to determine existing road acres. GPS data files are available at DNR's website for timber sale packets. See cruise narrative for cruise method.
- FEES:** \$115,175.00 is due on day of sale. \$9.00 per MBF is due upon removal. These are in addition to the bid price.
- SPECIAL REMARKS:** This sale contains high quality Douglas fir.
- Units #7 and #8 are WMZ Thinning units according to the prescription in Schedule A, which is part of the contract.
- No equipment may operate within, nor logs yarded through or over, the non-tradeable leave tree clump marked with yellow leave tree area tags in VRH Unit #6.
- Purchaser must provide a written Extreme Hazard Abatement Plan, which meets the requirements of contract clause S-020. Hazard Abatement is required within a minimum of 100 feet from Stossel Creek Road in VRH Unit #6, which consists of pulling back slash.
- Snow plowing will require written permission from the Contract Administrator as well as a written "Snow Plowing Agreement".



TIMBER NOTICE OF SALE

Purchaser shall cut all vine maple within the harvest unit(s), leaving a stump no more than 12 inches in height.

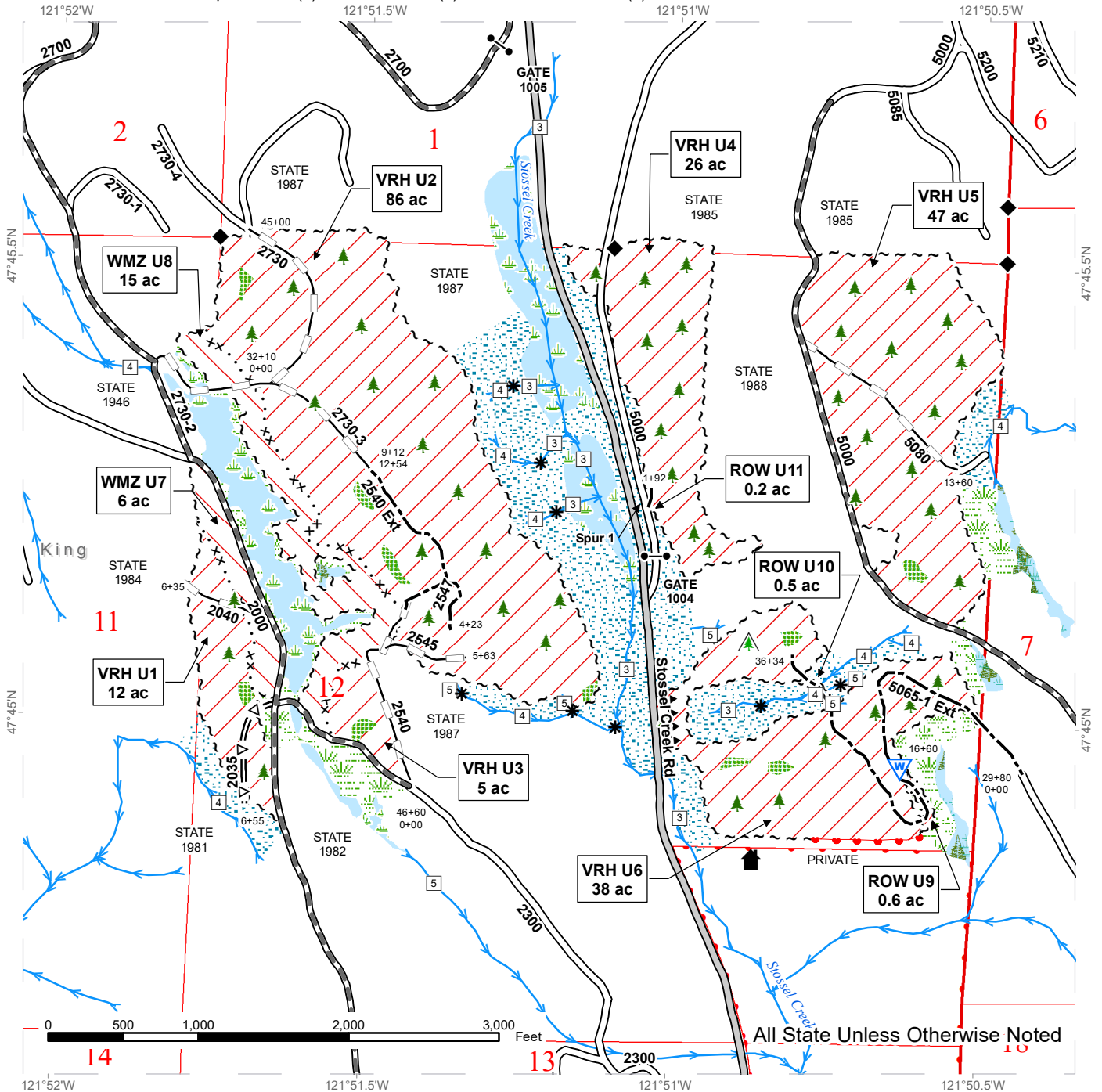
For the safety of the public, please remove from roads all string from string boxes used during appraising or cruising this sale.

See map for gate locations. Gate keys may be obtained by contacting the South Puget Sound Region office at (360) 825-1631 or by contacting Zach Beebe at 253-736-4830.

TIMBER SALE MAP

SALE NAME: SCHOOL BUS VRH AND WMZ THIN
AGREEMENT #: 30-101111
TOWNSHIP(S): T26R7E
TRUST(S): Capitol Grant (7), Normal School (8), State Forest Transfer (1)

REGION: South Puget Sound Region
COUNTY(S): King
ELEVATION RGE: 600-960

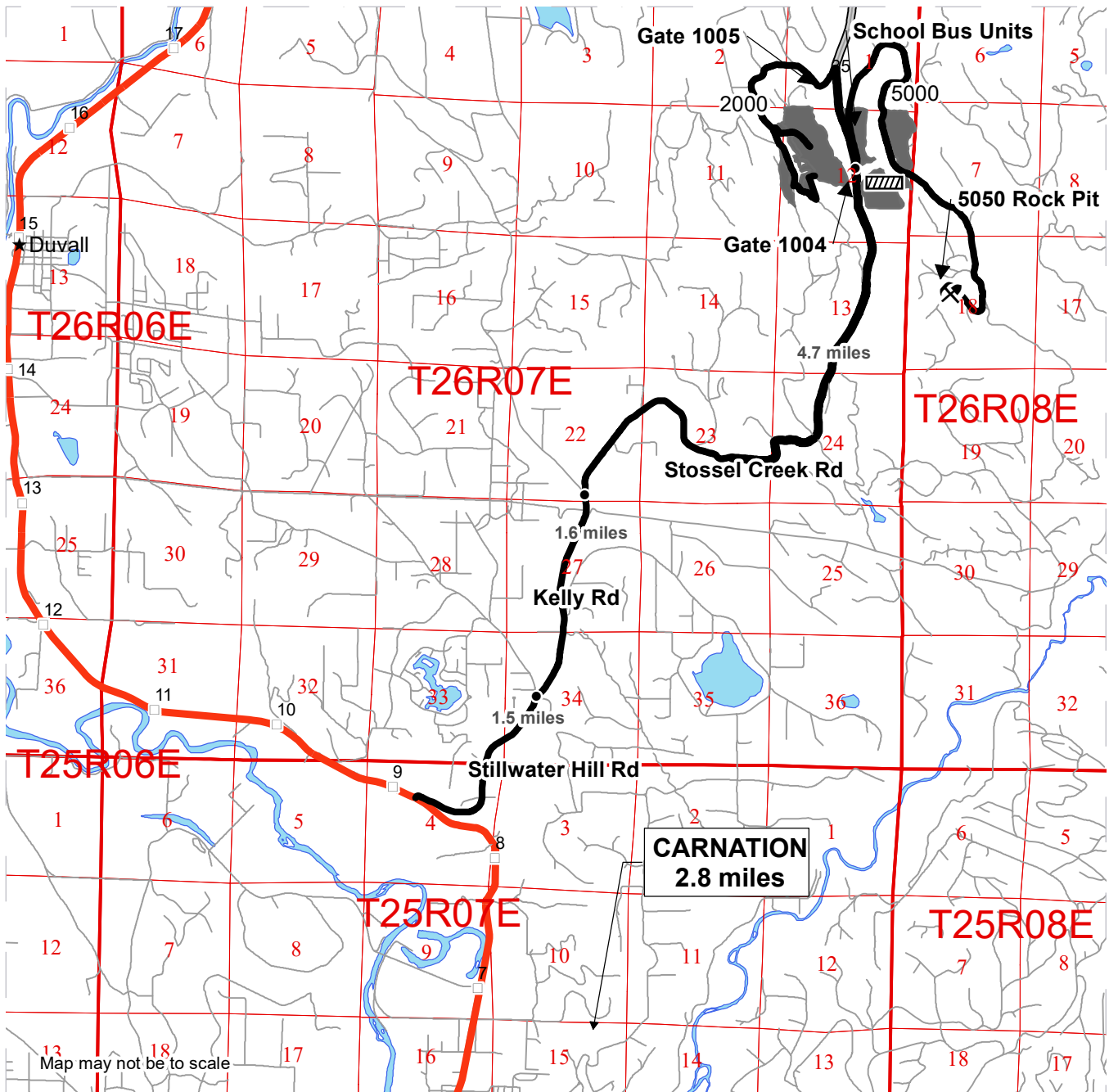


Variable Retention Harvest	Sale Boundary Tags	County Road	Streams
Variable Density Thinning	Special Mgmt Area	Existing Roads	Stream Type
Right-of-Way	Right of Way Tags	Required Pre-Haul Maintenance	Stream Type Break
Leave Tree Area	Property Line	Optional Pre-Haul Maintenance	Gate (Master 383)
Riparian Mgt Zone	Public Land Survey Sections	Optional Construction	Leave Tree Area <1/4-acre
Wetlands - Non-forested	DNR Managed Lands	Optional Reconstruction	Non-Tradeable Leave Trees
Forested Wetland	Survey Monument	Hazard Abatement Area	Structure
Wetland Mgt Zone			Waste Area

DRIVING MAP

SALE NAME: SCHOOL BUS VRH AND WMZ THIN
AGREEMENT#: 30-101111
TOWNSHIP(S): T26R7E
TRUST(S): Capitol Grant (7), Normal School (8), State Forest Transfer (1)

REGION: South Puget Sound Region
COUNTY(S): King
ELEVATION RGE: 600-960



	Timber Sale Unit
	Haul Route
	Highway
	Milepost Markers
	Culvert
	Distance Indicator
	Rock Pit
	Town
	Public Land Survey Sections

**DRIVING DIRECTIONS:
FROM CARNATION**

Head north on Highway 203 for 2.8 miles and take a right onto Stillwater Hill Rd. After 1.5 miles Stillwater Hill Rd turns into Kelly Rd. Continue for 1.6 miles and take a right onto Stossel Creek Rd. Continue for 4.5 miles and Unit 6 will be on the right. Continue for 0.2 mile and take a right onto the 5000 Rd, gate 1004 will be 300 feet further. Unit 4 can be accessed from the 5000 Rd near the gate. Continue for 3 miles and take a right onto the 5060 Rd. Unit 5 can be accessed from the 5060 Rd.

Units 1, 2, 7, and 8 can be accessed by traveling on Stossel Creek Rd .75 miles past the 5000 Rd turnoff and taking a left onto the 2000 Rd. Passing through the 1005 gate, continue 1.9 miles to access the units.





TIMBER NOTICE OF SALE

SALE NAME: *BIG HOLLOW SALVAGE*

AGREEMENT NO: *30-101695*

AUCTION: July 29, 2021 starting at 10:00 a.m., **COUNTY:** Skamania
Pacific Cascade Region Office, Castle Rock, WA

SALE LOCATION: Sale located approximately 36 miles east of Woodland, WA

**PRODUCTS SOLD
AND SALE AREA:**

All timber, except leave trees bound by yellow "Leave Tree Area" tags, leave trees marked with blue paint all timber existing 5 years prior to the day of sale, bounded by the following;

White "Timber Sale Boundary" tags with pink flagging, reprod, and the S-2090 road in Unit 1;

White "Timber Sale Boundary" tags with pink flagging, timber type change, and the boundary of Variety Timber Sale Unit 2;

Reprod, and the S-2090A road in Unit 3;

White "Timber Sale Boundary" tags and pink flagging, timber type change, S-2000, and the S-2090 road in Unit 4

All forest products above located on part(s) of Sections 21 and 28 all in Township 6 North, Range 5 East, W.M., containing 55 acres, more or less.

CERTIFICATION: This sale is certified under the Sustainable Forestry Initiative® program Standard (cert no: PwC-SFIFM-513)

ESTIMATED SALE VOLUMES AND QUALITY:

Species	Avg DBH	Ring Count	Total MBF	MBF by Grade								
				1P	2P	3P	SM	1S	2S	3S	4S	UT
Noble fir	16.6		898						413	374	104	7
Hemlock	13.6		586						106	336	123	22
Douglas fir	12.1		332						20	158	135	19
Silver fir	17.1		39						26	11	3	
Red cedar	13		19							6	13	
Sale Total			1,874									

MINIMUM BID: \$433,000.00 **BID METHOD:** Sealed Bids

PERFORMANCE SECURITY: \$86,600.00 **SALE TYPE:** Lump Sum

EXPIRATION DATE: October 31, 2022 **ALLOCATION:** Export Restricted

BID DEPOSIT: \$43,300.00 or Bid Bond. Said deposit shall constitute an opening bid at the appraised price.

HARVEST METHOD: Cable, Cable-Assist, Shovel, Forwarder, and Track skidder.



TIMBER NOTICE OF SALE

ROADS: No timber sale road work is associated with this sale other than ARRF work that may arise.

ACREAGE DETERMINATION

CRUISE METHOD: The sale acres were determined by GPS. The sale area was cruised using a variable plot cruise method.

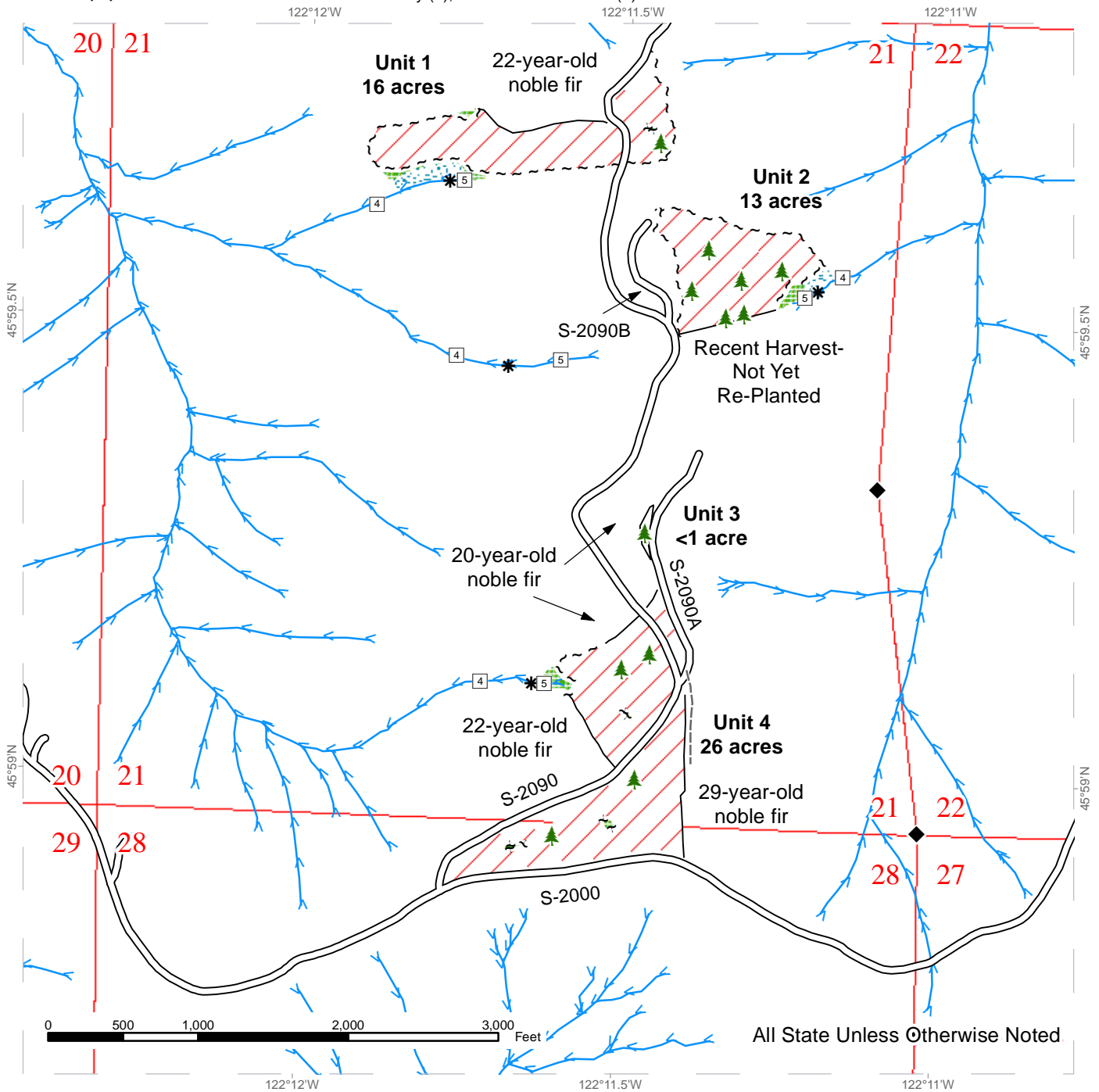
FEES: If Purchaser decides to use the US Forest Service 54 Road before the S-1000 is completed, a fee will be assessed by the US Forest Service in accordance with the Road Use Permit # 55-096712 with an approximate cost of \$3,219.32. There is no charge to the Purchaser to haul on the S-1000 after repair are completed. \$31,858.00 is due on day of sale. \$9.00 per MBF is due upon removal. These are in addition to the bid price.

SPECIAL REMARKS: Fire salvage sale with approximately 40 MBF of DF HQ 3 Saw.

TIMBER SALE MAP

SALE NAME: BIG HOLLOW SALVAGE
AGREEMENT #: 30-101695
TOWNSHIP(S): T6R5E
TRUST(S): Common School and Indemnity (3), State Forest Transfer (1)

REGION: Pacific Cascade Region
COUNTY(S): Skamania
ELEVATION RGE: 1840-3560



All State Unless Otherwise Noted

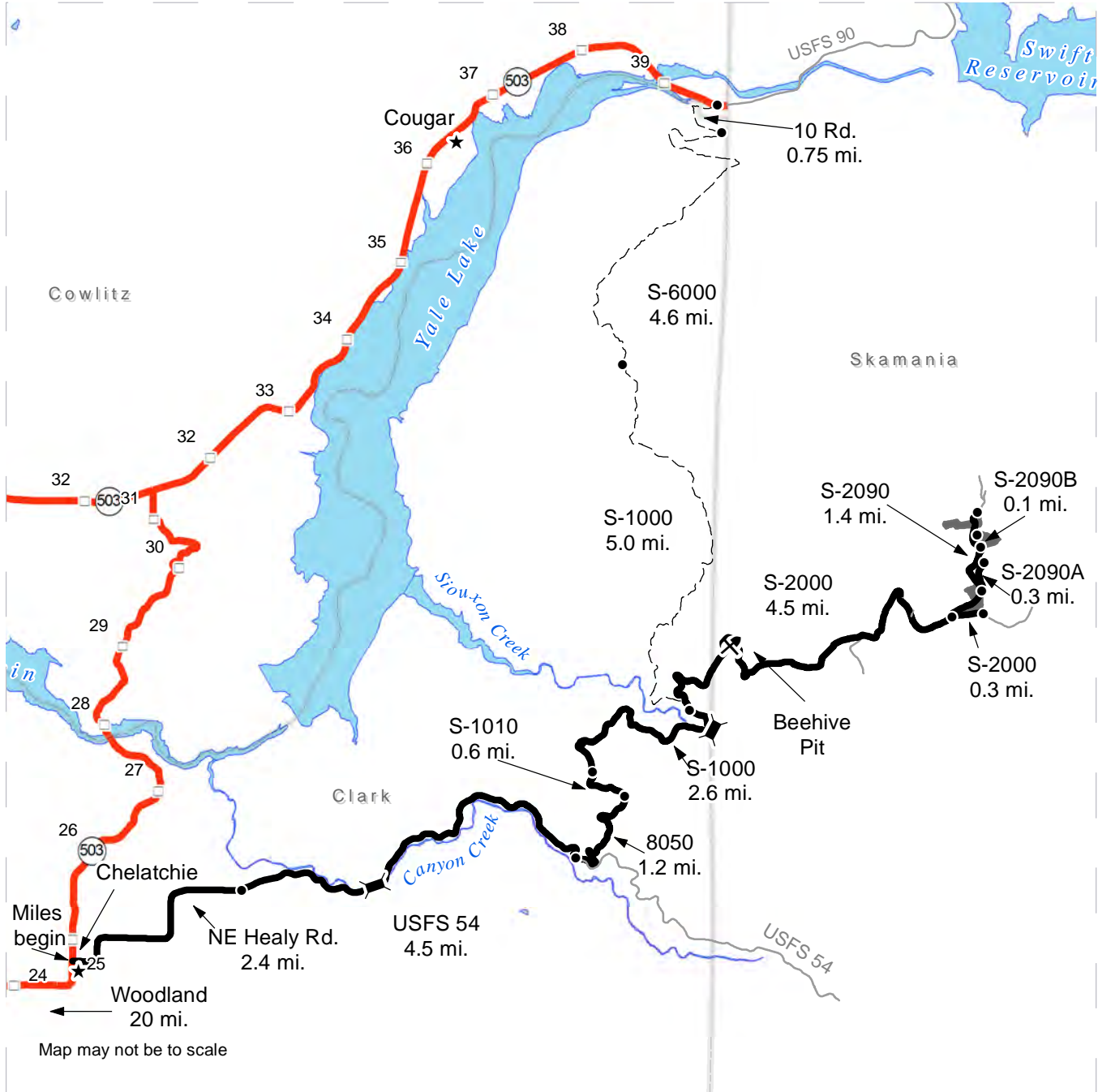
	Variable Retention Harvest		Sale Boundary Tags		Streams
	Leave Tree Area		Leave Tree Tags		Stream Type
	Riparian Mgt Zone		Timber Type Change		Stream Type Break
			Existing Roads		Leave Tree Area <1/4-acre
			Old Grades/Trails		Survey Monument



DRIVING MAP

SALE NAME: BIG HOLLOW SALVAGE
AGREEMENT#: 30-101695
TOWNSHIP(S): T6R5E
TRUST(S): Common School and Indemnity (3), State Forest Transfer (1)

REGION: Pacific Cascade Region
COUNTY(S): Skamania
ELEVATION RGE: 1840-3560



- Timber Sale Unit
- Haul Route
- Other Road
- Equipment Route
- Milepost Markers
- Bridge
- Distance Indicator
- Rock Pit

DRIVING DIRECTIONS:

From SR 503, turn east onto NE Healy Rd. and continue for 2.4 miles to USFS 54. Continue 4.5 miles and turn north onto the 8050 Rd. Continue 1.2 miles until the S-1010 Rd. Drive 0.6 miles and stay right at the fork; the road continues as the S-1000. Follow the S-1000 for 2.6 miles and turn north on the S-2000. Continue on the S-2000 for 4.5 miles to the S-2090.

Unit 4 is off the S-2000 and S-2090. Continue north on the S-2090 to access Units 1, 2, and 3. Unit 2 is off the S-2090B. Unit 3 is off the S-2090A.





TIMBER NOTICE OF SALE

SALE NAME: ELOCHOMOTIVE SORTS

AGREEMENT NO: 30-101739-30-101749

AUCTION: July 29, 2021 starting at 10:00 a.m.
Pacific Cascade Region Office, Castle Rock, WA

COUNTY: Wahkiakum

SALE LOCATION: Sale located approximately 17 miles west of Longview, WA

**PRODUCTS SOLD
AND SALE AREA:**

All delivered logs, except leave trees bounded by yellow "Leave Tree Area" tags, trees marked with blue paint and all down timber existing 5 years prior to day of sale bounded by the following:

White "Timber Sale Boundary" tags with pink flagging, the E-2000 and the E-2095 roads in Unit 1;

White "Timber Sale Boundary" tags with pink flagging and timber type change with pink flagging in Unit 2;

Orange "Right of Way" tags in Unit 3, meeting the specifications described below; on parts of Sections 25, and 26 all in Township 9 North, Range 5 West W.M., containing 108 acres, more or less.

MINIMUM BID AND ESTIMATED LOG VOLUMES:

Agreement #	Sort #	Species and Sort Specifications	Average Log Length	Estimated Volume		Tons Per MBF	Minimum Bid Delivered Prices		Total Appraised Value	Bid Deposit
				Mbf	Tons		\$/mbf	\$/Ton		
101739	1	DF 5-11"	28'	642	4558	7.1	\$675.00		\$433,350.00	\$43,335.00
101740	2	DF 12-19"	28'	887	5233	5.9	\$725.00		\$643,075.00	\$64,307.50
101741	3	DF 20"+	28'	650	3315	5.1	\$700.00		\$455,000.00	\$45,500.00
101742	4	WW* 5-11"	28'	596	4351	7.3	\$525.00		\$312,900.00	\$31,290.00
101743	5	WW* 12-19"	28'	1362	8444	6.2	\$550.00		\$749,100.00	\$74,910.00
101744	6	WW* 20"+	28'	559	3186	5.7	\$480.00		\$268,320.00	\$26,832.00
101745	7	RA 5"+	26'	24	173	7.2	\$600.00		\$14,400.00	\$1,440.00
101746	8	RC 5"+	26'	95	684	7.2	\$1,700.00		\$161,500.00	\$16,150.00
101747	9	WH Pulp 2"+	N/A	4	52	13		\$28.00	\$1,456.00	\$145.60
101748	10	DF, SS, TF Pulp 2"+	N/A	14	182	13		\$22.00	\$4,004.00	\$400.40
101749	11	Hardwood Pulp 2"+	N/A	4	52	13		\$30.00	\$1,560.00	\$156.00

Totals: 4837 30230 \$3,044,665.00

CERTIFICATION: This sale is certified under the Sustainable Forestry Initiative® program Standard (cert no: PwC-SFIFM-513)

BID METHOD: Sealed Bids **UNIT OF MEASURE:** MBF Scale/Tonnage Scale

EXPIRATION DATE: February 28, 2022 **ALLOCATION:** Export Restricted

PAYMENT SECURITY: To be determined by the State as described in Clause P-045.2 of the Purchaser's Contract.



TIMBER NOTICE OF SALE

BIDDING

PROCEDURES:

A separate sealed bid and envelope must be submitted for each log sort. Prospective Purchasers may bid on any or all log sorts. On the day of sale the Purchaser must bring their bid deposit up to 10% of their total bid price. Complete bidding procedures and auction information may be obtained from the Pacific Cascade Region Office in Castle Rock WA. Phone number (360)577-2025.

TIMBER EXCISE

TAX:

Purchaser must pay the forest excise taxes associated with the log sorts delivered to them. The tax rate for this sale is 4.2 %. Taxable Stumpage = Total Delivered Value – (Harvest Cost + Estimated Haul Cost + ARRF). For more information contact the Department of Revenue, Forest Tax Section at 1-800-548-8829.

Use the following rates for estimating taxable stumpage:

Harvest Cost = \$77.83 per MBF for sorts 1, 2, 3, 4, 5, 6, 7 and 8 and \$12.00 per Ton for sorts 9, 10 and 11.

Hauling Services Payment Rate per Ton
= (Base Rate + Mileage Rate) x (1.39)

Base Rate = \$2.35 per ton

Mileage Rate = ((\$0.16 x C miles) + (\$0.11 x A miles)) x Fuel Index Factor

ARRF = \$0.00 per MBF for sorts 9, 10 and 11 and \$26.00 per MBF for sorts 1, 2, 3, 4, 5, 6, 7 and 8.

Note: To calculate ARRF rates per ton use the tons\mbf conversion factor in the table above.

Long-haul surcharge: An additional haul payment of \$25/mbf net scale for mbf scale sorts or \$4.60/ton for tonnage sorts will be added for delivery destinations in excess of 250 total one-way miles (A miles plus C miles).

CONFIRMATION:

Each sort is subject to confirmation following auction. Sorts will not be confirmed until at least 10 days after auction. Final contract award is contingent upon the State's haul cost analysis. Actual haul route may vary and is subject to change at the State's discretion.

SPECIAL REMARKS:

The successful Purchaser(s) will be required to purchase logs from the sale area upon delivery to their location specified in the bid submitted. Logs will be delivered to the Purchaser's delivery location by the State's contract harvester. Purchaser is responsible for weighing and scaling costs. All tonnage loads will be weighed and all mbf loads will be scaled at State approved locations. The State reserves the right to determine where logs are authorized to be scaled and weighed.

All road work must be completed by August 31, 2021. *WW - Whitewood sorts may contain small amounts of Sitka spruce. See Cruise for details.



TIMBER NOTICE OF SALE

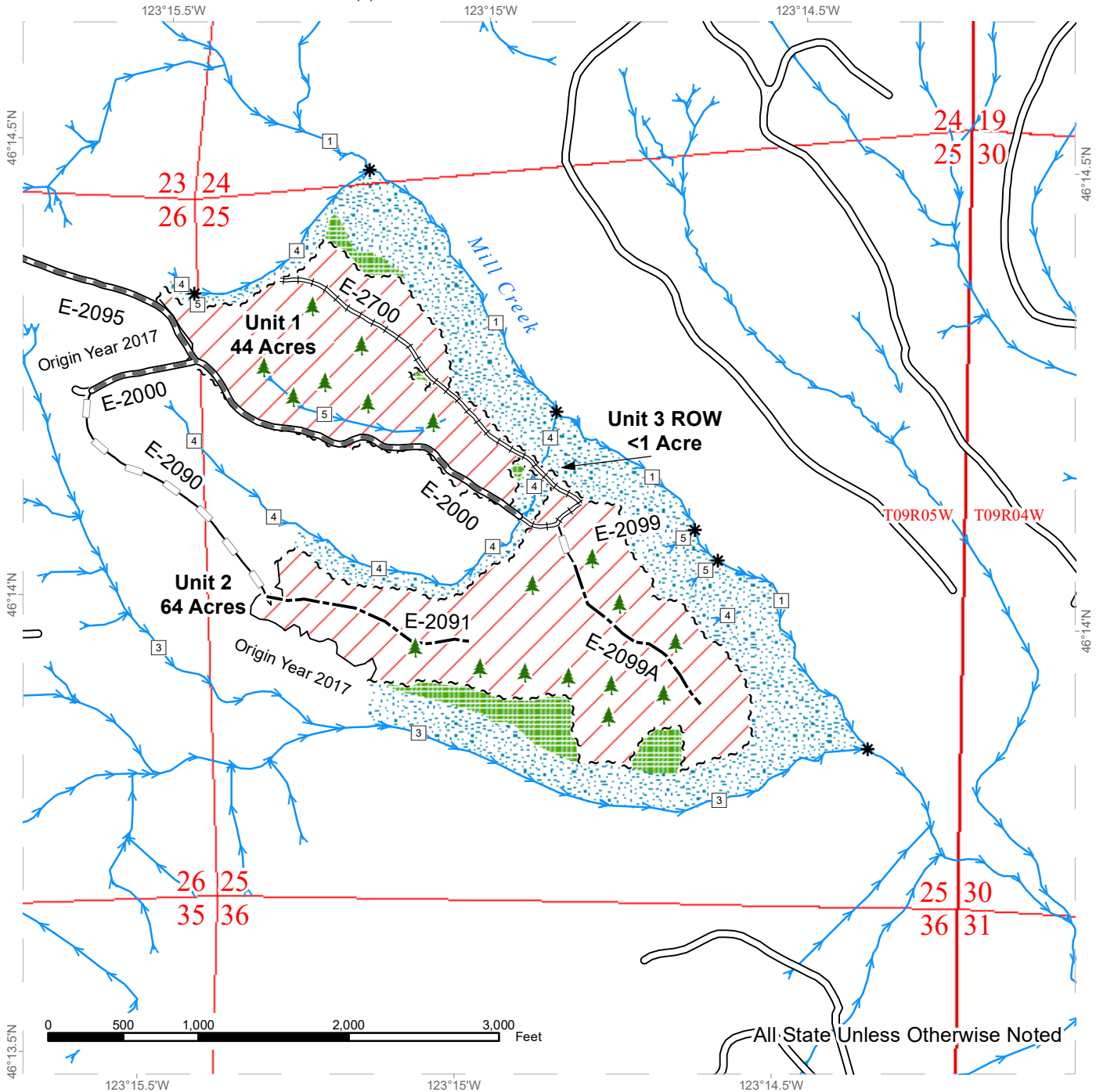
The State is not responsible for legal actions filed by third-parties that may affect the operability of these timber sales. The purchaser assumes the risk of loss for any costs, damages, or business expectations related to this sorts auction resulting from such legal action. The purchaser acknowledges that it has been notified by the State that legal action is pending against the State that may prohibit it from proceeding with this sorts auction, including but not limited to a court order enjoining the State from delivering the forest products to the purchaser. The purchaser further acknowledges that it has been provided a copy of the lawsuit entitled, "Center for Responsible Forestry v. Washington State Department of Natural Resources, et. al., #21-2-00023-35 (Wahkiakum County Superior Court)", and that it has had an opportunity to seek advice of legal counsel with respect to its rights and interests before entering into this contract.

For more information regarding this log sort sale visit our web site:
<http://www.dnr.wa.gov/programs-and-services/product-sales-and-leasing/timber-sales/timber-auction-packets>. If you have questions call Jon Olson at the Pacific Cascade Region Office at (360)577-2025 or Steve Teitzel at the Product Sales and Leasing Division Office in Olympia at (360)902-1741.

TIMBER SALE MAP

SALE NAME: ELOCHOMOTIVE SORTS
AGREEMENT #: 30-101651
TOWNSHIP(S): T9R5W
TRUST(S): State Forest Transfer (1)

REGION: Pacific Cascade Region
COUNTY(S): Wahkiakum
ELEVATION RGE: 520-1000



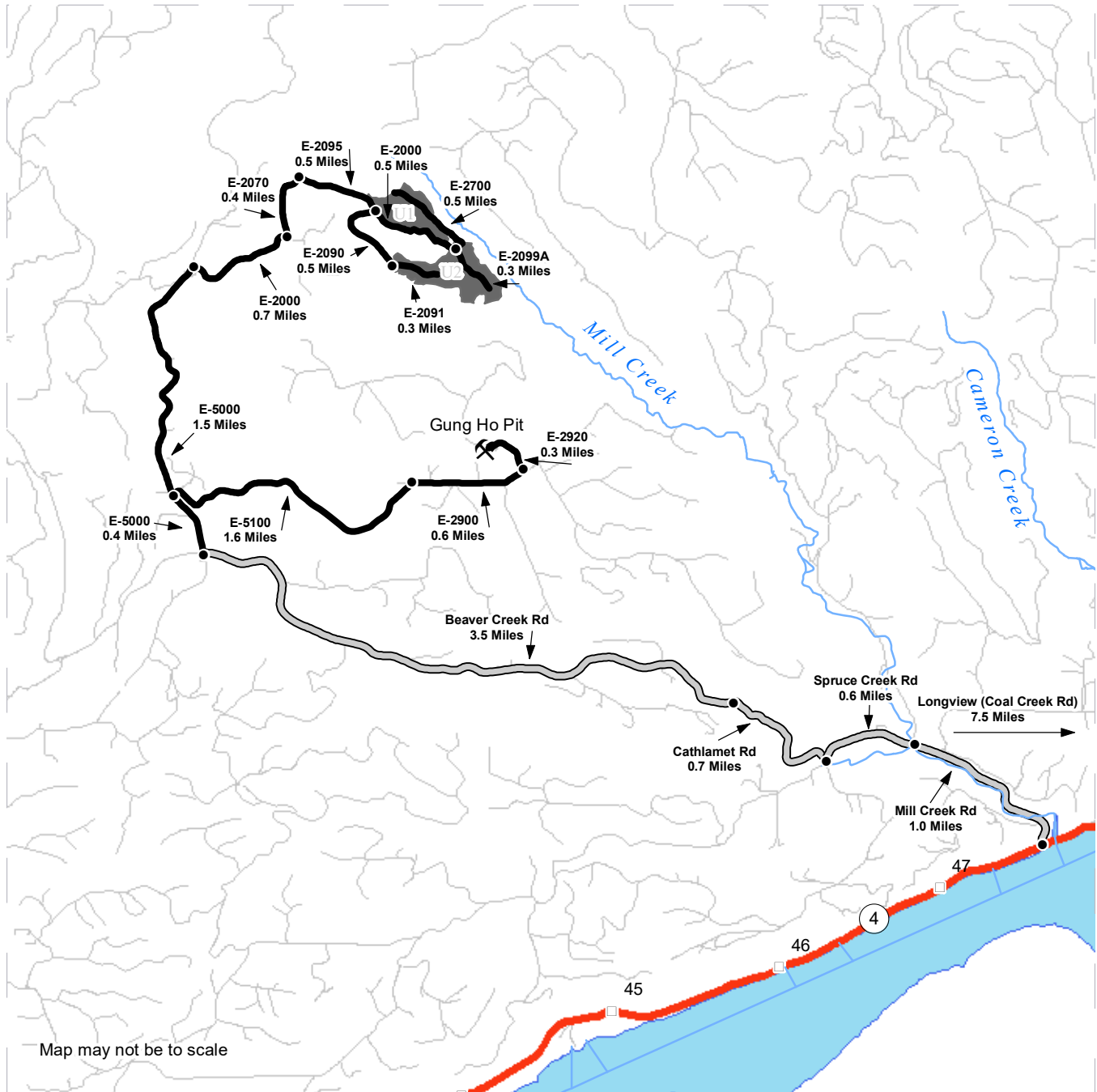
Variable Retention Harvest	Required Pre-Haul Maintenance
Leave Tree Area	Required Reconstruction
Riparian Mgt Zone	Optional Construction
Sale Boundary Tags	Optional Reconstruction
Leave Tree Tags	Streams
Right of Way Tags	Stream Type
Timber Type Change	Stream Type Break
Existing Roads	Leave Tree Area <1/4-acre



DRIVING MAP

SALE NAME: ELOCHOMOTIVE SORTS
AGREEMENT#: 30-101651
TOWNSHIP(S): T9R5W
TRUST(S): State Forest Transfer (1)

REGION: Pacific Cascade Region
COUNTY(S): Wahkiakum
ELEVATION RGE: 520-1000



- Timber Sale Unit
- Haul Route
- County Road
- Highway
- Milepost Markers
- Distance Indicator
- Rock Pit

DRIVING DIRECTIONS:
 From State Route 4 (between milepost 47 and 48), turn north onto Mill Creek Rd. Follow for 1.0 miles. Turn left onto Spruce Creek Rd. Follow for 0.6 miles. Turn right onto Cathlamet Rd. Follow for 0.7 miles, after which it becomes Beaver Creek Rd. Continue straight for 3.5 miles. Turn right onto E-5000. Follow for 0.4 miles.

Rock Pit Access: Turn right onto E-5100. Follow for 1.6 miles. Continue onto E-2900. Follow for 0.6 miles. Turn left onto E-2920. Follow for 0.3 miles, then arrive at Gung Ho Pit on your left.

Harvest Unit Access: Continue on E-5000 for 1.5 miles until reaching the Bradley Bike Trail parking area. Turn right onto E-2000. Follow for 0.7 miles. Turn left onto E-2070. Follow for 0.4 miles, then continue onto E-2095. EITHER turn left to head downhill on E-2000 for 0.5 miles, reaching the internal E-2700 and E-2099A roads (to be constructed with the sale), OR turn right to follow E-2090 (reconstruct) for 0.5 miles to U2.





TIMBER NOTICE OF SALE

SALE NAME: UNIBROW

AGREEMENT NO: 30-101956

AUCTION: July 29, 2021 starting at 10:00 a.m., **COUNTY:** Wahkiakum
Pacific Cascade Region Office, Castle Rock, WA

SALE LOCATION: Sale located approximately 18 miles west of Longview, WA

PRODUCTS SOLD AND SALE AREA: All timber, except leave trees marked with blue paint, all down timber existing five years prior to day of sale, bounded by the following;

White "Timber Sale Boundary" tags with pink flagging, timber type change with pink flagging and the E-1000 road with pink flagging in Unit 1;

White "Timber Sale Boundary" tags with pink flagging and timber type change with pink flagging in Unit 2;

All forest products above located on part(s) of Sections 19 and 30 all in Township 9 North, Range 4 West, W.M., containing 23 acres, more or less.

CERTIFICATION: This sale is certified under the Sustainable Forestry Initiative® program Standard (cert no: PwC-SFIFM-513)

ESTIMATED SALE VOLUMES AND QUALITY:

Species	Avg DBH	Ring Count	Total MBF	MBF by Grade								
				1P	2P	3P	SM	1S	2S	3S	4S	UT
Douglas fir	22.1	7	672						466	175	27	4
Hemlock	21.9		343						297	27	16	3
Red alder	16		49					7	13	5	24	
Red cedar	32.7		39							39		
Sale Total			1,103									

MINIMUM BID: \$498,000.00 **BID METHOD:** Sealed Bids

PERFORMANCE SECURITY: \$99,600.00 **SALE TYPE:** Lump Sum

EXPIRATION DATE: September 30, 2022 **ALLOCATION:** Export Restricted

BID DEPOSIT: \$49,800.00 or Bid Bond. Said deposit shall constitute an opening bid at the appraised price.

HARVEST METHOD: Estimated 100% Ground Based.

ROADS: 65.17 stations of required prehaul maintenance. 1.13 stations of abandonment. Rock used in accordance with the quantities on the ROCK LIST shall be obtained from any commercial source at the Purchaser's expense. Rock sources are subject to written approval by the Contract Administrator before their use. See Road Plan for abandonment details.



TIMBER NOTICE OF SALE

ACREAGE DETERMINATION

CRUISE METHOD: The sale acres were determined by GPS delineation. Cruise was completed using variable plot cruise methods.

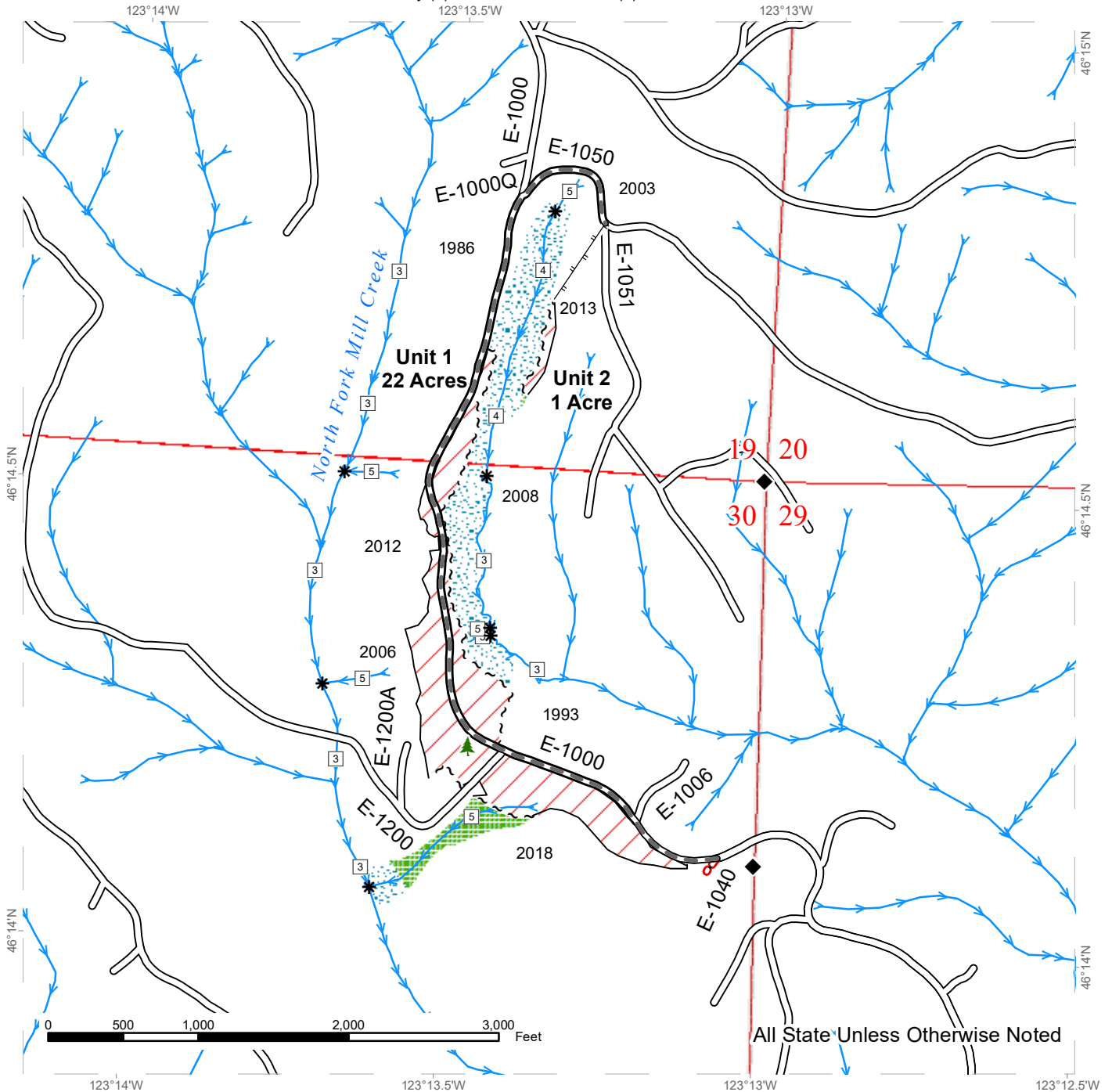
FEES: \$18,750.00 is due on day of sale. \$9.00 per MBF is due upon removal. These are in addition to the bid price.

SPECIAL REMARKS: This sale has approximately 108 MBF of high quality 2 saw DF, 30 MBF of high quality 3 saw DF. See cruise for further detail.

TIMBER SALE MAP

SALE NAME: UNIBROW
AGREEMENT #: 30-101956
TOWNSHIP(S): T9R4W
TRUST(S): Common School and Indemnity (3), State Forest Transfer (1)

REGION: Pacific Cascade Region
COUNTY(S): Wahkiakum
ELEVATION RGE: 760-880



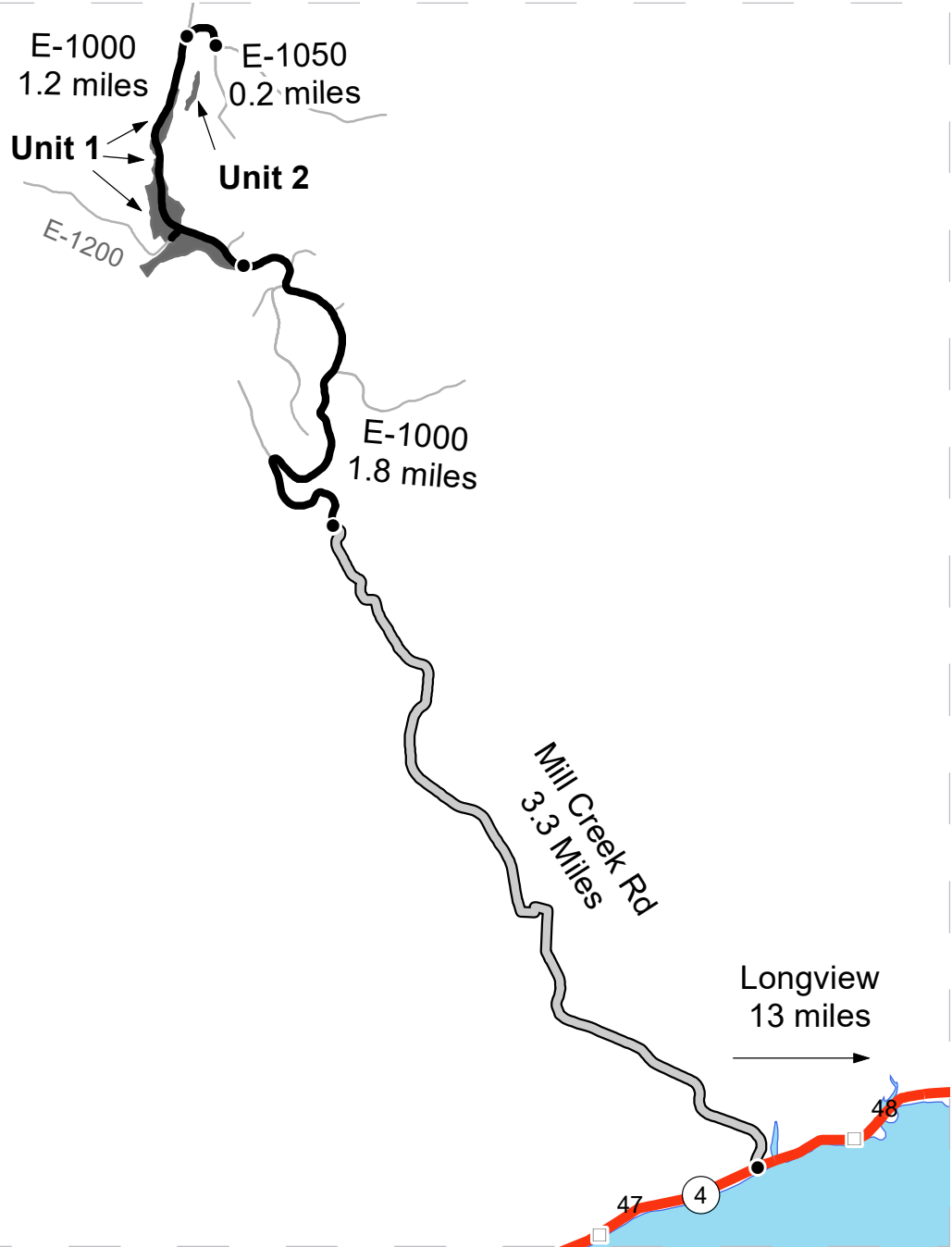
	Variable Retention Harvest		Existing Roads		Streams
	Leave Tree Area		Required Pre-Haul Maintenance		Stream Type
	Riparian Mgt Zone		Required Abandonment		Stream Type Break
	Leave Tree Area <1/4-acre		Designated Skid Trail		
	Sale Boundary Tags				
	Timber Type Change				



DRIVING MAP

SALE NAME: UNIBROW
AGREEMENT#: 30-101956
TOWNSHIP(S): T9R4W
TRUST(S): Common School and Indemnity (3), State Forest Transfer (1)

REGION: Pacific Cascade Region
COUNTY(S): Wahkiakum
ELEVATION RGE: 760-880



Map may not be to scale

- Timber Sale Unit
- Haul Route
- Other Road
- Milepost Markers

DRIVING DIRECTIONS:

From Route 4, drive north on Mill Creek Rd for 3.3 miles. Continue onto the E-1000. Continue north for 1.8 miles. Arrive at Unit 1.

Continue north for 1.2 miles. Turn east onto the E-1050. Continue for 0.2 miles, reaching a junction. Here begins the designated skid trail into Unit 2.





TIMBER NOTICE OF SALE

SALE NAME: ACME OVERLOOK

AGREEMENT NO: 30-101186

AUCTION: July 28, 2021 starting at 10:00 a.m., COUNTY: Whatcom Northwest Region Office, Sedro Woolley, WA

SALE LOCATION: Sale located approximately 2 miles east of Acme, WA

PRODUCTS SOLD AND SALE AREA:

All timber bounded by white timber sale boundary tags, the Mosquito Lake Road, and the AE-ML, CMQ-17 and AE-05 roads, except cedar salvage (cedar snags, preexisting dead and down cedar trees and cedar logs), trees marked with blue paint on the bole and root collar, and forest products tagged out by yellow leave tree area tags in the Unit.

All timber bounded by orange right of way tags.

All forest products above located on part(s) of Sections 4 and 9 all in Township 37 North, Range 5 East, W.M., containing 83 acres, more or less.

CERTIFICATION: This sale is certified under the Sustainable Forestry Initiative® program Standard (cert no: PwC-SFIFM-513)

ESTIMATED SALE VOLUMES AND QUALITY:

Table with columns: Species, Avg DBH, Ring Count, Total MBF, and MBF by Grade (1P, 2P, 3P, SM, 1S, 2S, 3S, 4S, UT). Rows include Douglas fir, Red cedar, Hemlock, Red alder, Maple, and Sale Total.

MINIMUM BID: \$1,433,000.00 BID METHOD: Sealed Bids

PERFORMANCE SECURITY: \$100,000.00 SALE TYPE: Lump Sum

EXPIRATION DATE: March 31, 2023 ALLOCATION: Export Restricted

BID DEPOSIT: \$143,300.00 or Bid Bond. Said deposit shall constitute an opening bid at the appraised price.

HARVEST METHOD: Cable; tracked-based equipment, rubber-tired skidder (See below for restrictions) and/or "6-wheeled rubber-tired skidders with over-the-tire tracks spanning both sets of rear tires" (See below for restrictions) on sustained slopes 40% or less; self-leveling equipment on sustained slopes 55% or less; also, a feller-buncher may be utilized on sustained slopes 40% or less.

Purchaser must obtain prior written approval from the Contract Administrator for areas as to where to utilize rubber-tired skidder equipment and/or "6-wheeled rubber-tired skidders with over-the-tire tracks spanning both sets of rear tires" prior to use. Skidders shall be limited to preapproved skid trails only. If ground disturbance is causing



TIMBER NOTICE OF SALE

excessive damage, as determined by the Contract Administrator, skidders will no longer be authorized. Falling and Yarding will not be permitted from November 1 to March 31 unless authorized in writing by the Contract Administrator (THIS PERTAINS TO GROUND-BASED EQUIPMENT ONLY) to reduce soil damage and erosion.

ROADS:

18.58 stations of required construction. 70.13 stations of required prehaul maintenance. 11.63 stations of abandonment.

Rock may be obtained from the following source(s) on State land at no charge to the Purchaser: McCoy Pit at station 22+50 of the MM-2217 Road.

Development of an existing rock source will involve drilling, shooting, and processing rock to generate riprap and 3-inch-minus ballast rock.

An estimated total quantity of rock needed for this proposal: 158 cubic yards of riprap and 3,155 cubic yards of ballast rock.

Road work and the hauling of rock will not be permitted from November 1 to March 31 unless authorized in writing by the Contract Administrator to reduce soil damage and siltation. The hauling of forest products will not be permitted from November 1 to March 31 unless authorized in writing by the Contract Administrator to reduce soil damage and siltation.

ACREAGE DETERMINATION

CRUISE METHOD:

Acres determined by GPS traverse for units and for right-of-way. Cruise was conducted via variable plot sample type, as well as 1/20 acre fixed plot for right-of-way. Cruise acres are based on FMA (Forest Management Activity) acres including leave tree areas. Leave tree volume is not included in the cruise. See Cruise Narrative for further details. Shapefiles of units are available upon request after the BNR meeting in which the sale is presented.

FEES:

\$51,595.00 is due on day of sale. \$9.00 per MBF is due upon removal. These are in addition to the bid price.

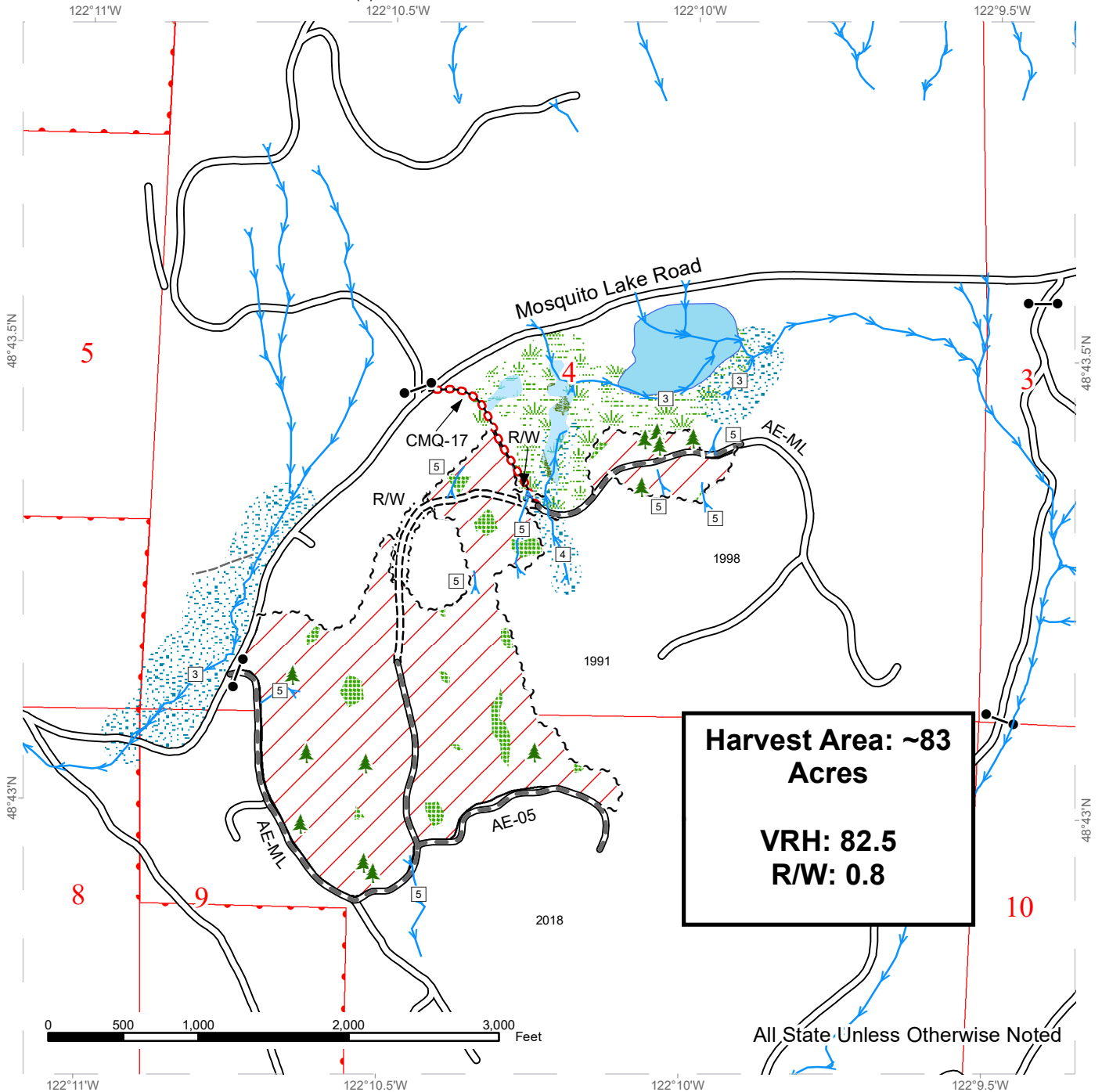
SPECIAL REMARKS:

1. Redcedar poles were noted within the sale area. No formal cruise was conducted for cedar poles.
2. Whatcom County Parks and Recreation has an interest in building a trail in the area of the sale and may be working on that project during operations on this sale.

TIMBER SALE MAP

SALE NAME: ACME OVERLOOK
AGREEMENT #: 30-101186
TOWNSHIP(S): T37R5E
TRUST(S): State Forest Transfer (1)

REGION: Northwest Region
COUNTY(S): Whatcom
ELEVATION RGE: 560-800



Harvest Area: ~83 Acres
VRH: 82.5
R/W: 0.8

All State Unless Otherwise Noted

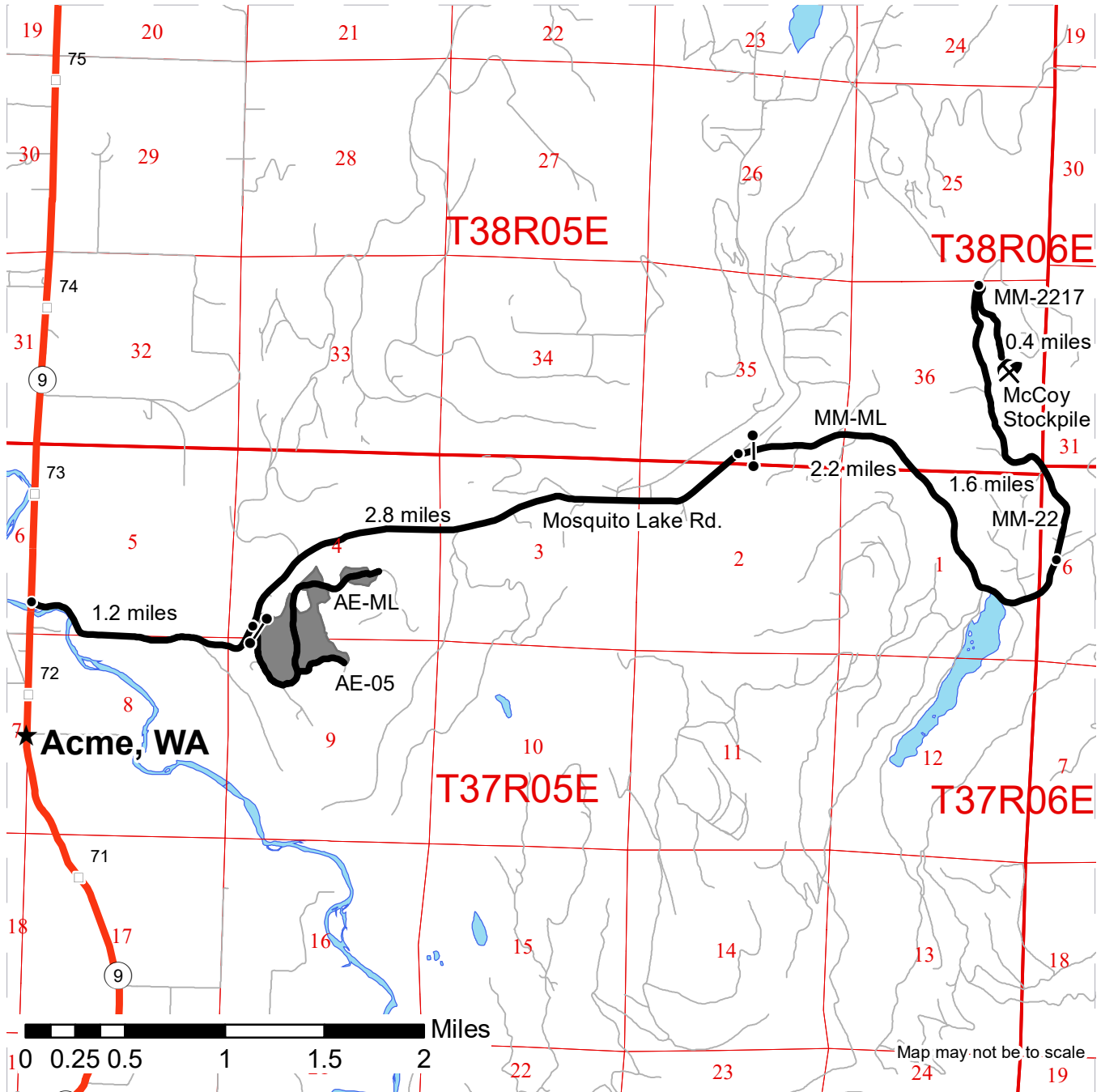
Variable Retention Harvest	Sale Boundary Tags	Stream Type
Forested Wetland	Right of Way Tags	Stream Type Break
Leave Tree Area	Existing Roads	Leave Tree Area <1/4-acre
Riparian Mgt Zone	Required Pre-Haul Maintenance	Gate
Wetland Mgt Zone	Required Construction	
DNR Managed Lands	Required Abandonment	
	Old Grades/Trails	
	Streams	



DRIVING MAP

SALE NAME: ACME OVERLOOK
AGREEMENT#: 30-101186
TOWNSHIP(S): T37R5E
TRUST(S): State Forest Transfer (1)

REGION: Northwest Region
COUNTY(S): Whatcom
ELEVATION RGE: 560-800



- Timber Sale Unit
- Haul Route
- Highway
- Rock Pit (Corporate)
- Gate (Corporate)
- Town
- Milepost Markers

DRIVING DIRECTIONS:
 From Acme, Wa, Travel 0.3 miles north on HWY 9 and turn right onto Mosquito Lake Rd. Travel 1.25 miles and turn right on the AE-ML.

DIRECTIONS TO MCCOY STOCKPILE:
 From the junction of Mosquito Lake Rd. and the AE-ML, travel 2.8 miles east on Mosquito Lake Rd. and turn right onto the MM-ML. Travel 2.2 miles on the MM-ML and take a slight left onto the MM-22. Continue on the MM-22 for 1.6 miles and turn right onto the MM-2217. Travel 0.4 miles to arrive at McCoy Stockpile.





TIMBER NOTICE OF SALE

SALE NAME: PUCKWUDGIE

AGREEMENT NO: 30-101217

AUCTION: July 28, 2021 starting at 10:00 a.m., **COUNTY:** Whatcom
Northwest Region Office, Sedro Woolley, WA

SALE LOCATION: Sale located approximately 11 miles north of Sedro-Woolley, WA.

**PRODUCTS SOLD
AND SALE AREA:**

All timber bounded by white timber sale boundary tags, adjacent young stands and the ML-17 Road, except cedar salvage (cedar snags, preexisting dead and down cedar trees and cedar logs), trees marked with blue paint on the bole and root collar, and forest products tagged out by yellow leave tree area tags in Unit #1 (collectively labeled 1A and 1B).

All timber bounded by white timber sale boundary tags and adjacent young stands, except cedar salvage (cedar snags, preexisting dead and down cedar trees and cedar logs), trees marked with blue paint on the bole and root collar, and forest products tagged out by yellow leave tree area tags in Unit #2 (collectively labeled 2A and 2B).

All timber bounded by white timber sale boundary tags and adjacent young stands, except cedar salvage (cedar snags, preexisting dead and down cedar trees and cedar logs), trees marked with blue paint on the bole and root collar, and forest products tagged out by yellow leave tree area tags in Unit #3.

All timber bounded by white timber sale boundary tags in ROW 1.

All timber bounded by orange right-of-way tags.

All forest products above located on part(s) of Sections 31 all in Township 37 North, Range 5 East, Sections 35 and 36 all in Township 37 North, Range 4 East, W.M., containing 46 acres, more or less.

CERTIFICATION: This sale is certified under the Sustainable Forestry Initiative® program Standard (cert no: PwC-SFIFM-513)

ESTIMATED SALE VOLUMES AND QUALITY:

Species	Avg DBH	Ring Count	Total MBF	MBF by Grade								
				1P	2P	3P	SM	1S	2S	3S	4S	UT
Hemlock	18		1,627						945	564	61	57
Douglas fir	29	8	681			17	8		585	60	7	4
Red cedar	23		216							201	15	
Silver fir	23		66						46	17	2	1
Red alder	14		15						3	3	8	1
Maple	18		6							3		3
Sale Total			2,611									

MINIMUM BID: \$1,047,000.00 **BID METHOD:** Sealed Bids

PERFORMANCE SECURITY: \$100,000.00 **SALE TYPE:** Lump Sum



TIMBER NOTICE OF SALE

EXPIRATION DATE: March 31, 2023 **ALLOCATION:** Export Restricted

BID DEPOSIT: \$104,700.00 or Bid Bond. Said deposit shall constitute an opening bid at the appraised price.

HARVEST METHOD: Cable; shovel feller-buncher on sustained slopes 40% or less; self-leveling equipment on sustained slopes 55% or less; tethered equipment may be utilized (See below for restrictions).

Purchaser must obtain prior written approval from the Contract Administrator for areas as to where to utilize tethered equipment prior to use. Falling and Yarding will not be permitted from November 1 to March 31 unless authorized in writing by the Contract Administrator (THIS PERTAINS TO GROUND-BASED EQUIPMENT ONLY) to reduce soil damage and erosion.

ROADS: 30.17 stations of required construction. 74.02 stations of required prehaul maintenance. Rock may be obtained from the following source(s) on State land at no charge to the Purchaser: Doc Spratley Pit at station 3+00 of the ML-04 Road.

Development of existing rock source will involve drilling, shooting, and processing rock to generate riprap and 3-inch-minus ballast rock.

An estimated total quantity of rock needed for this proposal: 207 cubic yards of riprap and 5,420 cubic yards of ballast rock.

Additional restrictions apply, see Remarks section below.

Road work and the hauling of rock and forest products will not be permitted on the ML-17 between stations 55+38 and 66+00 and between stations 100+73 and 115+22 from April 1 to May 31 unless authorized in writing by the Contract Administrator. Hauling will not be permitted on all other roads November 1 to March 31. This will not be waived.

ACREAGE DETERMINATION

CRUISE METHOD: Acres determined by GPS traverse. Cruise was conducted via variable and fixed plot sample type. See Cruise Narrative for further details. Shapefiles of units are available upon request after the BNR meeting in which the sale is presented.

FEES: \$44,387.00 is due on day of sale. \$9.00 per MBF is due upon removal. These are in addition to the bid price.

SPECIAL REMARKS:

1. Logging of Unit 1A may require ground-based equipment to pre-bunch logs for cable yarding. Contract Administrator shall approve equipment entry trails and any associated corridors through RMZ's for access or cable yarding.
2. Rock pit expansion shall be completed by November 1, 2021. Purchaser shall complete the pit plan development requirements specified on sheet 28 of the road plan prior to October 31, 2021. Any unused rock produced for the sale shall be stockpiled a minimum of 100 feet away from the operating pit face.
3. Intermediate supports may be necessary in Unit 2.
4. Hauling shall not be permitted on any road between November 1 and March 31. This shall not be waived.
5. The following wildlife timing restrictions apply to this contract and shall be in place in the locations shown on the timber sale map. Wildlife timing restrictions are: no falling,



TIMBER NOTICE OF SALE

bucking, yarding or operation of heavy equipment from April 1 to September 23 from two hours after official sunset to two hours before official sunrise. Timing restrictions will be applied as depicted on the timber sale map and described in the road plan.

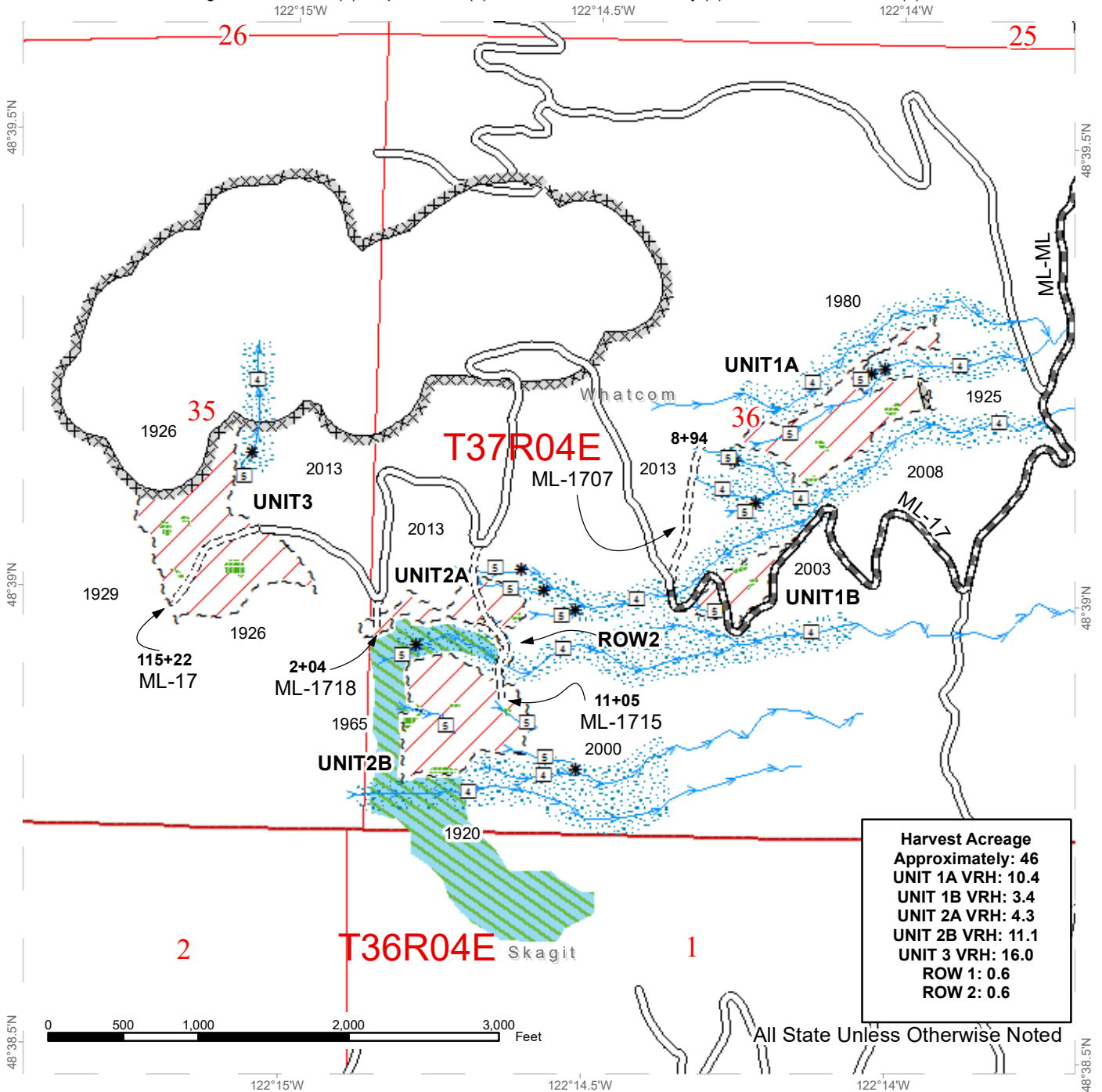
6. HQ DF noted within the sale area. See cruise for further details.

7. Redcedar poles were noted within Unit 2 and Unit 3.

TIMBER SALE MAP

SALE NAME: PUCKWUDGIE
AGREEMENT #: 30-101217
TOWNSHIP(S): T37R4E
TRUST(S): Agricultural School (4), Capitol Grant (7), Common School, Indemnity (3), State Forest Purchase (2)

REGION: Northwest Region
COUNTY(S): Whatcom
ELEVATION RGE: 1320-2800



Harvest Acreage
 Approximately: 46
 UNIT 1A VRH: 10.4
 UNIT 1B VRH: 3.4
 UNIT 2A VRH: 4.3
 UNIT 2B VRH: 11.1
 UNIT 3 VRH: 16.0
 ROW 1: 0.6
 ROW 2: 0.6

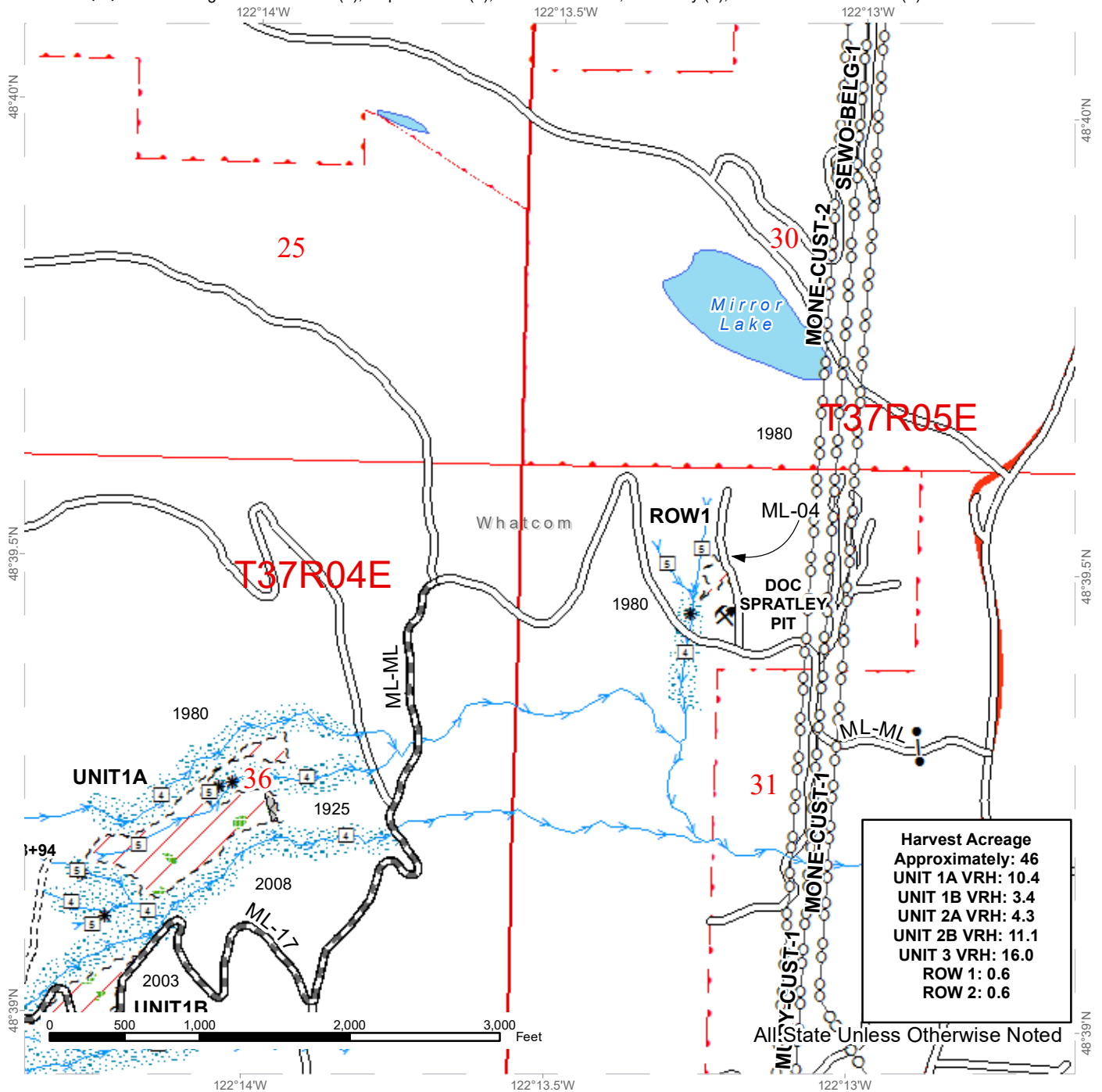
- | | | |
|----------------------------|-----------------------|------------------------------|
| Variable Retention Harvest | Stream Type 5 | Nontradeable Leave Tree Area |
| Sale Boundary Tags | Stream Break | Leave Tree Area |
| Right of Way Tags | Timing Restriction | Riparian Mgt Zone |
| Prehaul Maintenance | Leave Tree Area | DNR Managed Lands |
| Required Construction | Leave Tree Area | |
| Existing Roads | Riparian Mgt Zone | |
| Streams | No Entry Area | |
| Stream Type 4 | MM Timing Restriction | |



TIMBER SALE MAP

SALE NAME: PUCKWUDGIE
AGREEMENT #: 30-101217
TOWNSHIP(S): T37R4E
TRUST(S): Agricultural School (4), Capitol Grant (7), Common School, Indemnity (3), State Forest Purchase (2)

REGION: Northwest Region
COUNTY(S): Whatcom
ELEVATION RGE: 1320-2800



Harvest Acreage
 Approximately: 46
 UNIT 1A VRH: 10.4
 UNIT 1B VRH: 3.4
 UNIT 2A VRH: 4.3
 UNIT 2B VRH: 11.1
 UNIT 3 VRH: 16.0
 ROW 1: 0.6
 ROW 2: 0.6

All State Unless Otherwise Noted

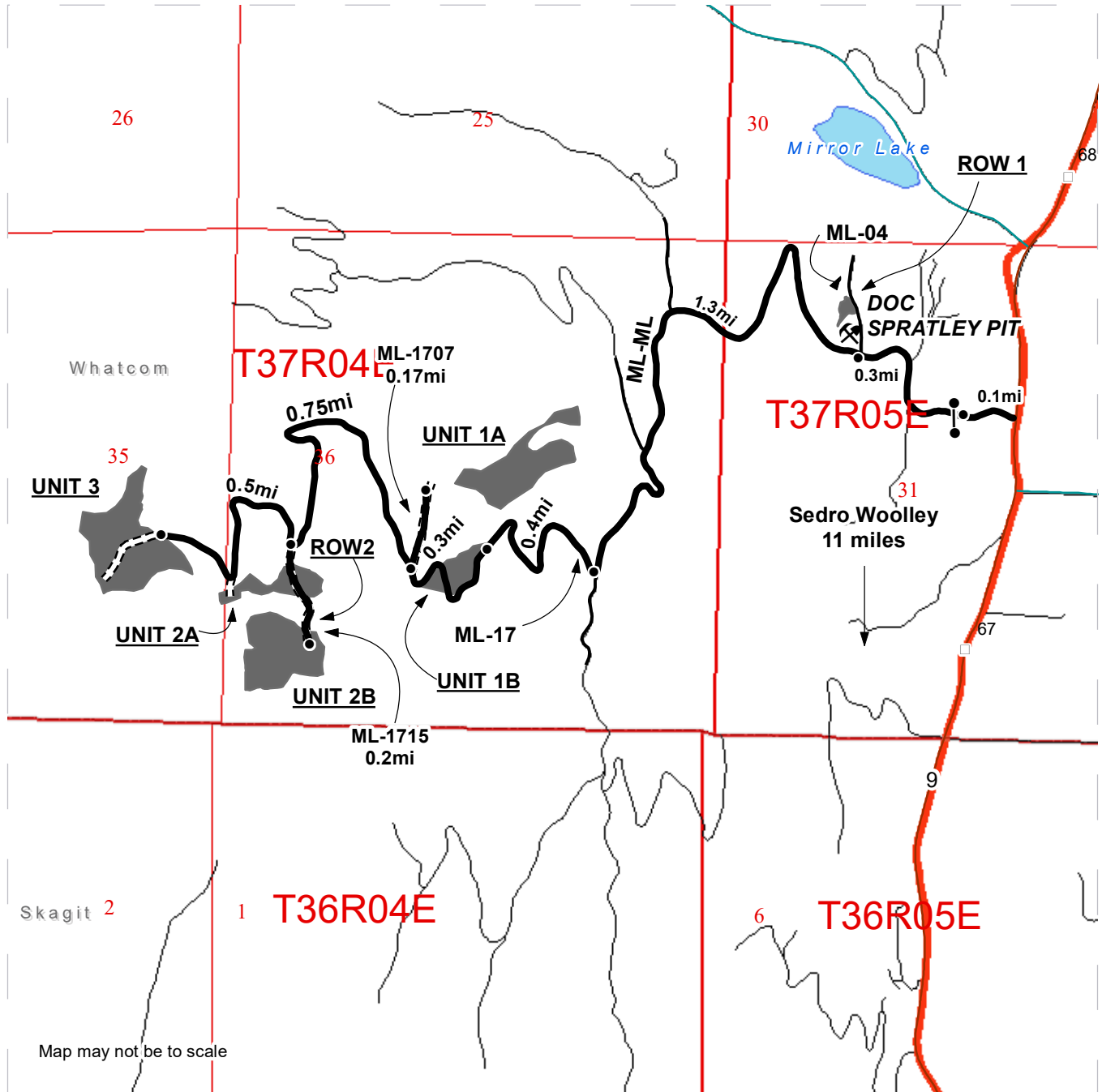
Variable Retention Harvest	Stream Break	Rock Pit
Sale Boundary Tags	Leave Tree Area	BPA Transmission Lines
Prehaul Maintenance	Leave Tree Area	DNR Managed Lands
Required Construction	Riparian Mgt Zone	
Existing Roads	Nontradeable Leave Tree Area	
Streams	Leave Tree Area	
Stream Type 4	Riparian Mgt Zone	
Stream Type 5	Gate (F1 Lock)	



DRIVING MAP

SALE NAME: PUCKWUDGIE
 AGREEMENT#: 30-101217
 TOWNSHIP(S): T37R4E
 TRUST(S): Agricultural School (4), Capitol Grant (7), Common School, Indemnity (3), State Forest Purchase (2)

REGION: Northwest Region
 COUNTY(S): Whatcom
 ELEVATION RGE: 1320-2800



Map may not be to scale

- Timber Sale Unit
- Haul Route
- Milepost Markers
- Distance Indicator
- Gate
- Rock Pit

DRIVING DIRECTIONS

11 miles north on highway 9 from Sedro Woolley, turn left onto the ML-ML. In 0.1mi you will reach the gate which requires an F1 key. Continue 0.3mi and turn right onto the ML-04 where ROW 1 will be on the left. To reach Unit 1B continue on the ML-ML for 1.3mi, the unit will be on the right. To reach Unit 1A, continue on the ML-ML for 0.3mi, turn right on the ML-1707, continue for 0.17mi and the unit will be downhill on the right. To get to Unit 2A & 2B, continue on the ML-ML for 0.75mi, turn left onto the ML-1715 and continue through Unit 2A for 0.2mi to Unit 2B. To reach Unit 3, continue on the ML-ML for 0.5mi where you will then enter the unit.



**State of Washington
Department of Natural Resources**

SEALED BID FORM

Sale Name _____ Agreement Number _____

_____ hereby submits the following bid for timber.
(Print full, legal company name)

(Street address, City, State, Zip Code)

(Phone Number)

Lump Sum Bid (Not Including Fees) \$ _____ **For Total Sale**

Weight Scale Sale Bid (Not Including Fees) \$ _____ / **Ton**

Scribner Scale Sale Bid (Not Including Fees) \$ _____ / **MBF For Biddable Species**

BID DEPOSIT

Bid Deposit Amount: \$ _____

Bid Deposit Type:

- Cash, certified check, cashiers check, or money order
 Per Sale Bid Bond
 Statewide Bid Bond, Number _____

Within 30 days of confirmation date the successful bidder agrees to furnish Performance Security acceptable to the State in the amount specified on the Notice of Sale. Performance Security must guarantee performance of all provisions of the contract and payment of any damages caused by operations under the contract or resulting from the successful bidders noncompliance with any rule or law.

Bidder's Warranty and Bid Signature

By signing and submitting this bid as an offer to purchase forest products from the State, the Bidder hereby warrants to the State that they have had an opportunity to fully inspect the sale area and the forest products being sold. Bidder further warrants to the State that they enter this bid based upon their own judgments of the value of the forest products, formed after their own examination and inspection of both the timber sale area and the forest products being sold. Bidder also warrants to the State that they enter this bid without any reliance upon the volume estimates, acreage, appraisals, pre-bid documentation, or any other representation by the Washington State Department of Natural Resources.

_____ Date _____
(Signature of Authorized Representative submitting this bid)

(Print **name and title** of Authorized Representative submitting this bid)

Note: all sales are subject to confirmation by the Commissioner of Public Lands (Refer 79.15.120)

Instructions For Completing Sealed Bid Form

All bids submitted for the purchase of forest products being sold by the Washington State Department of Natural Resources must have an original signature on behalf of the person or entity submitting the bid, and must be on the form provided in this booklet or a photocopy thereof. The DNR will not accept bids that are not signed, and will not accept bids that are not on the current, approved bid form. All appropriate blanks on bid form must be completed including the bid bond number if the bidder is relying upon a bid bond for bid deposit.

For more specific information, contact the appropriate region office.

In-Person Bids

- A. Sealed bids must be in auction box before 10:00 a.m. on the day of auction at the location specified in the Timber Notice of Sale.
 - B. Sealed bids must be submitted in an envelope with the name of the sale, the bidder's name and the contract number clearly written on the outside of the envelope. The full legal name and business address of the bidder must be inserted where indicated on the form, and must be on the bid bond and timber sale contract. The bid form must be signed by an authorized representative. When a bidder has more than one person authorized to bid, documentation of those persons with signature authority for bidding must accompany the bid or be on file at the region office. Sealed bid envelopes are available at all region offices. One bid per envelope.
 - C. Sealed bid envelopes **must** contain a completed bid form and a bid deposit.
 - D. Sealed bid envelopes **may** contain a check for the Initial Deposit amount and a check for fees.
-

Mailed Bids

- A. Bids that are mailed are required to have printed on the outside: "DO NOT OPEN UNTIL SALE DATE. SEALED BID ENCLOSED". The sealed bid envelope(s) will be enclosed inside the mailed-in envelope. Mailed bids must be submitted in an envelope with the name of the sale, the bidder's name and the agreement number clearly written on the outside of the envelope. The full legal name and business address of the bidder must be inserted where indicated on the form, and must be the same on the bid bond and timber sale contract. The Sealed Bid Form must be signed by an authorized representative. When a bidder has more than one person authorized to bid, documentation of those persons with signature authority for bidding must accompany the bid or be on file at the region office. Mail-in envelopes are available at all region offices. One bid per mailed-in envelope.
 - B. Bids that are mailed will be accepted up to 4:30 p.m. the last business day before the auction by the region office in which the sale is located. Bidders assume the risk for the method of delivery. The DNR assumes no responsibility for any delays caused by any delivery service.
 - C. Sealed bid envelopes **must** contain a completed bid form and a bid deposit.
 - D. Sealed bid envelopes **may** contain a check for the Initial Deposit amount and a check for fees.
-

Initial Deposit:

Lump Sum Sales - Initial Deposit must equal 10% of the total bid submitted.
(25% if the bidder is a defaulter as defined under WAC 332-140-300)

Weight Scale Sales - Initial Deposit must equal 10% of the bid per ton multiplied by the total sale estimated tonnage. (25% if the bidder is a defaulter as defined under WAC 332-140-300)

Scribner MBF Scale Sales - Initial Deposit must equal 10% of the bid per MBF multiplied by the total sale MBF. (25% if the bidder is a defaulter as defined under WAC 332-140-300)

**State of Washington
Department of Natural resources**

STATEWIDE BID BOND

Bond Number _____

_____ of _____,
(Principal's Name) (City, State)

hereinafter called PRINCIPAL, and _____ hereinafter called
SURETY,

a corporation organized under the laws of the State of _____, and authorized to transact surety business in the State of Washington, as SURETY, are held and firmly bound jointly and severally to the State of Washington, Department of Natural Resources, hereinafter called the STATE, in the sum of \$150,000.00 Dollars, lawful money of the United States of America. The PRINCIPAL binds itself, its heirs, executors, administrators, successors, and assigns, and the SURETY binds itself, its successors, and assigns, all jointly and severally.

This bond shall be governed by the laws of the State of Washington. In the event of a lawsuit involving this bond, a venue shall be proper only in Thurston County Superior Court.

Signed, sealed and dated this _____ day of _____, _____ .
(month) (year)

This statewide bid bond may be used for bidding between the following dates:

Starting:

Ending:

It Is Hereby Understood and Agreed:

If PRINCIPAL is an apparent high bidder, PRINCIPAL shall before 4:30 p.m ., on day of sale, pay to the STATE the amount of the initial deposit in the form of a certified check, cashier's check, bank draft, cash or money order, then this agreement shall be void for the sale on which the payment is made; otherwise, it will remain in force.

SURETY will make payment to the STATE within ten days after demand by the STATE if the PRINCIPAL shall fail to make timely payment as described above.

The SURETY may cancel this bond by sending a written notice to the STATE, not less than forty-five days before a cancellation date; liability shall terminate as to acts or omissions of the PRINCIPAL that occur after the cancellation date.

The PRINCIPAL and the SURETY executed this bond on the date first mentioned.

Principal: (Above named)

Signature: _____

Name: _____

Title: _____

Address: _____

City: _____
State & Zip Code

Surety: (Above named)

Signature: _____

Name: _____

Title: _____

Address: _____

City: _____
State & Zip Code

Surety: (Local Office of Authorized agent)

Signature: _____

Name: _____

Title: _____

Address: _____

City: _____
State & Zip Code

Notary or Company Seal in Space Above

Instructions for Completing Timber Sale Statewide Bid Bond

- A. This form is authorized for use as bid guaranty to qualify for bidding on Washington State Department of Natural Resources timber sales.
- B. The Statewide Bid Bond may be used as bid guaranty on more than one timber sale.
- C. The full legal name and business address of the PRINCIPAL must be inserted where indicated and must be the same as will appear on the bidding record and timber sale contract. The bond must be signed by an authorized person. Additionally, the name must be typed or printed below the signature and title must be shown.
- D. The full legal name and business address of the SURETY must be inserted where indicated. The bond must be signed by an authorized person. Additionally, the name must be typed or printed below the signature and the title must be shown.
- E. If the SURETY does not have a Washington State office or resident agent, but is authorized to transact surety business in the State of Washington as SURETY, it may leave this signature block blank.
- F. This form must be received by the Department of Natural Resources, Product Sales & Leasing Division, PO BOX 47016, Olympia, Washington, 98504-7016, ten days in advance of the auction.
- G. **The State reserves the right to reject *incomplete or incorrect* bid bond forms, making such forms unacceptable as bid guaranty.**

**State of Washington
Department of Natural Resources**

Timber Sale Per Sale Bid Bond

Bond Number _____

_____ of _____, hereinafter called PRINCIPAL, and _____, hereinafter called SURETY, a corporation organized under the laws of the State of _____ and authorized to transact surety business in the State of Washington, as SURETY, are held and firmly bound jointly and severally to the State of Washington, Department of Natural Resources, hereinafter called the STATE, in the sum of \$ _____ Dollars, lawful money of the United States of America. The PRINCIPAL binds itself, its heirs, executors, administrators, successors, and assigns, and the SURETY binds itself, its successors, and assigns, all jointly and severally.

This bond shall be governed by the laws of the State of Washington. In the event of a lawsuit involving this bond, venue shall be proper only in Thurston County Superior Court.

Signed, sealed, and dated this _____ day of _____, 20 _____.

BID IDENTIFICATION:

SALES NAME(S)	REQUIRED DEPOSIT	AGREEMENT NUMBER(S)

DATE OF BID: _____

It Is Hereby Understood and Agreed:

If PRINCIPAL is the high bidder on the sale(s) identified above and, within ten (10) days of the day of sale, transmits cash, certified check, cashier's check, bank draft or money order, payable to the STATE, in the amount of the bid guaranty required by the terms of the Notice of Sale, *then* this obligation shall be void; *otherwise*, it shall remain in force.

SURETY will make payment to the STATE within ten (10) days after demand by the STATE whenever the PRINCIPAL shall fail to make timely payment as described above.

IN WITNESS WHEREOF: the PRINCIPAL and the SURETY have caused this bond to be executed on the date first mentioned.

SECOND OFFICER:

Signature: _____

Name: _____

Title: _____

PRINCIPAL: (Above Named)

Signature: _____

Name: _____

Title: _____

SURETY: (Local Office of Authorized Agent)

Signature: _____

Name: _____

Title: _____

Address: _____

City: _____

State & Zip: _____

SURETY: (Above Named)

Signature: _____

Name: _____

Title: _____

Address: _____

City: _____

State & Zip _____

NOTARY OR COMPANY SEAL IN THE SPACE ABOVE

Instructions for Completing Timber Sale Per Sale(s) Bid Bond

- A. This form is authorized for use as bid guaranty to qualify for bidding on Washington State Department of Natural Resources timber sales.
- B. The Timber Sale Per Sale Bid Bond may be used as bid guaranty on more than one timber sale auction held the same date at the same location.
- C. The full legal name and business address of the PRINCIPAL must be the same as will appear on the bidding record and timber sale contract. The bond must be signed by an authorized person, the name typed or printed, and title shown. If PRINCIPAL is a corporation, a second officer must sign in the space to the left of the signature of the officer executing for the PRINCIPAL.
- D. The full legal name and business address of the SURETY must be inserted where indicated. The bond must be signed by an authorized person. Additionally, the name must be typed or printed below the signature and the title must be shown. If this person is not an officer of the corporation, evidence of authority must be submitted.
- E. If the SURETY does not have a Washington State office or resident agent, but is authorized to transact surety business in the State of Washington as Surety, it may leave the local office signature block blank.
- F. The date of the bid bond must not be later than the auction date.
- G. **The State reserves the right to reject incomplete or *incorrect* bid bond forms, making such forms unacceptable as guaranty.**

STATE OF WASHINGTON
DEPARTMENT OF NATURAL RESOURCES

LOG SORT SEALED BID FORM

Sale Name _____ Agreement Number _____ Date _____

_____ hereby submits the following bid for delivered logs.
(Print Company Name)

_____ Telephone Number _____
(Print Name Authorized Company Representative) (Contact for bid result notification)

(Street Address)

(City, State and Zip)

Agreement Number	Sort Number	<u>Delivered Logs Bid Amount</u> (fill in one only)	
		\$ /MBF	\$ /TON

Bid Deposit Amount \$ _____

- Bid Deposit Type:**
- Cash, Certified Check, Cashiers Check, or Money Order
 - Per Sale Bid Bond
 - Statewide Bid Bond, Number _____

The successful bidder agrees to furnish payment security acceptable to the State in the amount as described in clause P-041 of the Purchaser’s contract prior to log delivery and at a date to be determined by the State.

Bidder’s Warranty and Bid Signature

By signing and submitting this bid as offer to purchase forest products from the State, the Bidder hereby warrants to the State that they have had an opportunity to fully inspect the sale area and the forest products being sold. Bidder further warrants to the State that they enter this bid based solely upon their own judgment of the value of the forest products, formed after their own examination and inspection of both the timber sale area and the forest products being sold. Bidder also warrants to the State that they enter this bid without any reliance upon the volume estimates, acreage estimates, appraisals, pre-bid documentation, or any other representation by the State Department of Natural Resources.

(Signature of Authorized Representative submitting this bid)

(Date of Signature)

(Print name and title of Authorized Representative submitting this bid)

NOTES: A separate bid form is required for each log sort bid and must be delivered in a separate envelope. Photocopies of this bid form may be used. Each photocopy must have original signatures. Final contract award is contingent upon the State’s haul cost analysis. Actual haul route may vary and is subject to change at the State’s discretion. All sales are subject to confirmation by the Commissioner of Public Lands as per RCW 79.15.100.

LOG SORT SEALED BID SUPPLEMENTAL INFORMATION FORM_____
(Print Company Name)_____
(Sale Name)_____
(Agreement Number)_____
(Sort Number)_____
(email: optional for DNR production report distribution)**Log Manufacturing Specifications:****Sawlog and Peeler sorts:** Enter at least one preferred log length including trim for each log length range below.**Pole sorts (Distribution):** Enter three or more lengths. Attach preferred manufacturing information.**Pole sorts (Transmission):** Enter six or more lengths. Attach preferred manufacturing information.**Tonnage sorts:** See bid form instructions for required log lengths. Enter additional custom lengths as desired.

Log Length Ranges	Bidder's Preferred Log Lengths
16 ft. through 20 ft.	
22 ft. through 30 ft.	
32 ft. through 40 ft.	
Distribution Poles – 35 ft. through 55 ft.	
Transmission Poles – 60 ft.+	

Log Delivery Information:**1) Designate the point of delivery and address (must be a street address)**_____
(Location Name)_____
(Street Address)_____
(City, State and Zip)**2) Designate the state approved Scaling and Weighing facilities closest to the point of delivery as needed.****Scaling Location Information****Weighing Location Information**_____
(Scaling Location Name)_____
(Weighing Location Name)_____
(Third Party Scaling Organization)_____
(Weighing Location Owner)_____
(Scaling Location Street Address)_____
(Weighing Location Street Address)_____
(Scaling Location City, State and Zip)_____
(Weighing Location City, State and Zip)

Final contract award is contingent upon the State's haul cost analysis. Actual haul route may vary and is subject to change at the State's discretion. Additional terms or conditions requested by the bidder on or attached to the Log Sort Sealed Bid or Supplemental Information Forms are informational only and non-binding.

Instructions for Completing the Log Sort Sealed Bid and Supplemental Information Forms.

All bids submitted for the purchase of forest products being sold by the Washington State Department of Natural Resources must have an original signature on behalf of the person or entity submitting the bid, and must be on the form(s) provided in this booklet or a photocopy thereof. The DNR will not accept bids that are not signed, and will not accept bids that are not on the current, approved bid form. All appropriate blanks including Agreement Number, Sort Number, Bid amount (per mbf or ton as appropriate for the sort), Bid deposit amount and type. Signatures and date on bid form must be completed including the bid bond number if bidder is relying upon a bid bond for bid deposit.

Bids shall not be accepted if a completed '**Log Sort Sealed Bid Supplemental Information Form**' is not included with the approved '**Log Sort Sealed Bid Form**'.

Required log lengths for tonnage sorts: Preferred log lengths for tonnage sawlog sorts shall include the following plus any additional lengths identified on the Bid Supplemental Information form:

Species Type	Preferred Lengths
Conifer Sorts	16', 20', 24', 26', 32', 40'
Hardwood Sorts	18', 20', 26', 28', 30', 36', 38', 40'

For more specific information, contact the appropriate region office.

In-Person Bids

- A. Sealed bids must be in auction box or auction envelope before 10:00 a.m. on the day of sale at the location specified in the notice of sale.
- B. Sealed bids must be submitted in an envelope with the name of the sale, the bidder's name and the contract agreement number clearly written on the outside of the envelope. The full legal name and business address of the bidder must be inserted where indicated on the form, and must be the same as the name on the bid bond and timber sale contract. The bid form must be signed by an authorized person. When a bidder has more than one person authorized to bid, then documentation of those persons with signature authority for bidding must accompany the bid or be on file at the region office. Sealed bid envelopes are available at all region offices. One bid per envelope.
- C. Sealed bid envelopes must contain the following:
 1. A completed '**Log Sort Sealed Bid Form**';
 2. A completed '**Supplemental Information Form**' and;
 3. A bid deposit

Mailed Bids

- A. Mail-in bid envelopes are required to have printed on the outside: "DO NOT OPEN UNTIL SALE DATE. SEALED BID ENCLOSED." The sealed bid envelope(s) will be enclosed inside the mailed-in envelope. Mailed bids must be submitted in an envelope with the name of the sale, the bidder's name and the agreement number clearly written on the outside of the envelope. The full legal name and business address of the bidder must be inserted where indicated on the form, and must be the same on the bid bond and timber sale contract. The bid form must be signed by an authorized person. When a bidder has more than one person authorized to bid, then documentation of those persons with signature authority for bidding must accompany the bid or be on file at the region office. Mail-in envelopes are available at all region offices. One bid per mailed-in envelope.
- B. Mail-in or otherwise delivered bids will be accepted up to 4:30 p.m. the last business day before the auction by the region office in which the sale is located. Bidders assume the risk for the method of delivery they chose. The DNR assumes no responsibility for any delays caused by any delivery service.
- C. Sealed bid envelopes must contain the following:
 1. A completed '**Log Sort Sealed Bid Form**';
 2. A completed '**Log Sort Sealed Bid Supplemental Information Form**' and;
 3. A bid deposit

Department of Natural Resources Region Offices

Olympia Headquarters
 1111 Washington St SE
 MS 47000
 Olympia, WA 98504-7000
 (360) 902-1000
www.dnr.wa.gov

Product Sales & Leasing Division

1111 Washington St SE
 MS 47014
 Olympia, WA 98504-7014
 (360) 902-1600

South Puget Sound Region
 950 Fairman Ave N
 Enumclaw, WA 98022-9282
 (360) 825-1631

Pacific Cascade Region

601 Bond Road
 PO Box 280
 Castle Rock, WA 98611-0280
 (360) 577-2025

Southeast Region

713 Bowers Road
 Ellensburg, WA 98926-9301
 (509) 925-8510

Northwest Region

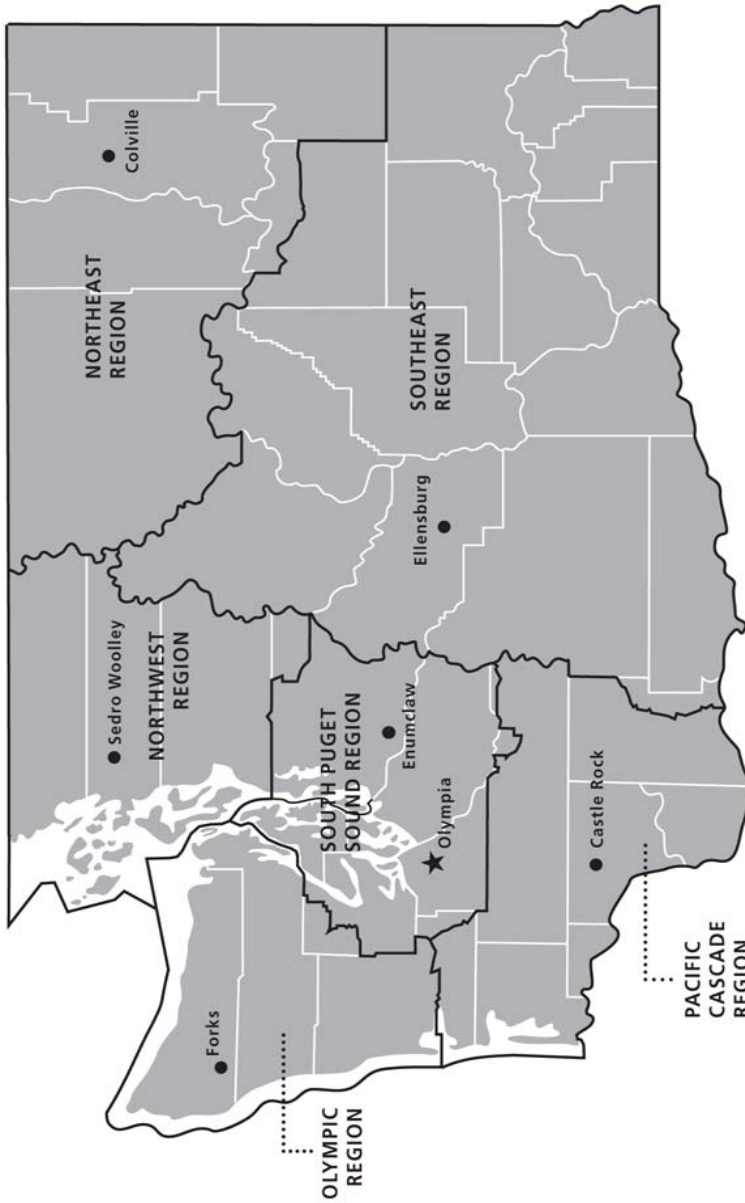
919 N Township St
 Sedro Woolley,
 WA 98284-9384
 (360) 856-3500

Olympic Region

411 Tillicum Lane
 Forks, WA 98331-9271
 (360) 374-2800

Northeast Region

225 S Silke Road
 PO Box 190
 Colville, WA 99114-0190
 (509) 684-7474



DNR REGIONS

- DNR Region Boundaries
- County Boundaries
- DNR Region Office
- Olympia Headquarters



WASHINGTON STATE DEPT OF
NATURAL RESOURCES



For more information about how public lands are managed visit DNR's web page at www.dnr.wa.gov

Fire, Burn Ban Information and Region Offices
 Toll Free: 1-800-527-3305 General TTY: 7-1-1





WASHINGTON STATE DEPT OF
**NATURAL
RESOURCES**

1111 WASHINGTON ST SE
MS 47014
OLYMPIA WA 98504-7014

www.dnr.wa.gov

For alternate formats
of this document,
Call (360) 902-1000
TRS: 7-1-1

PRINTED IN THE USA ON RECYCLED PAPER

