

Williams Creek

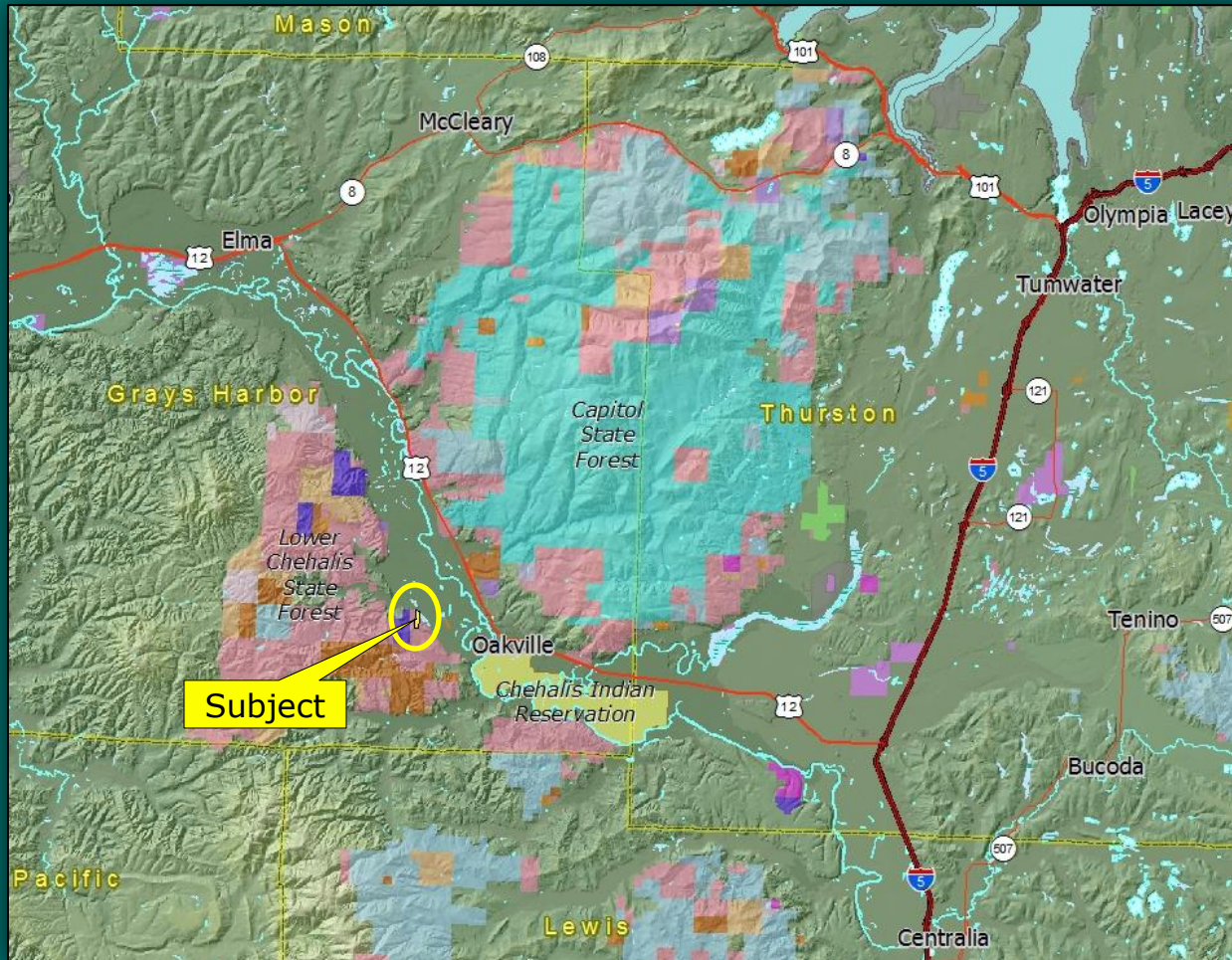
08-091566

Proposed Acquisition

Grays Harbor County



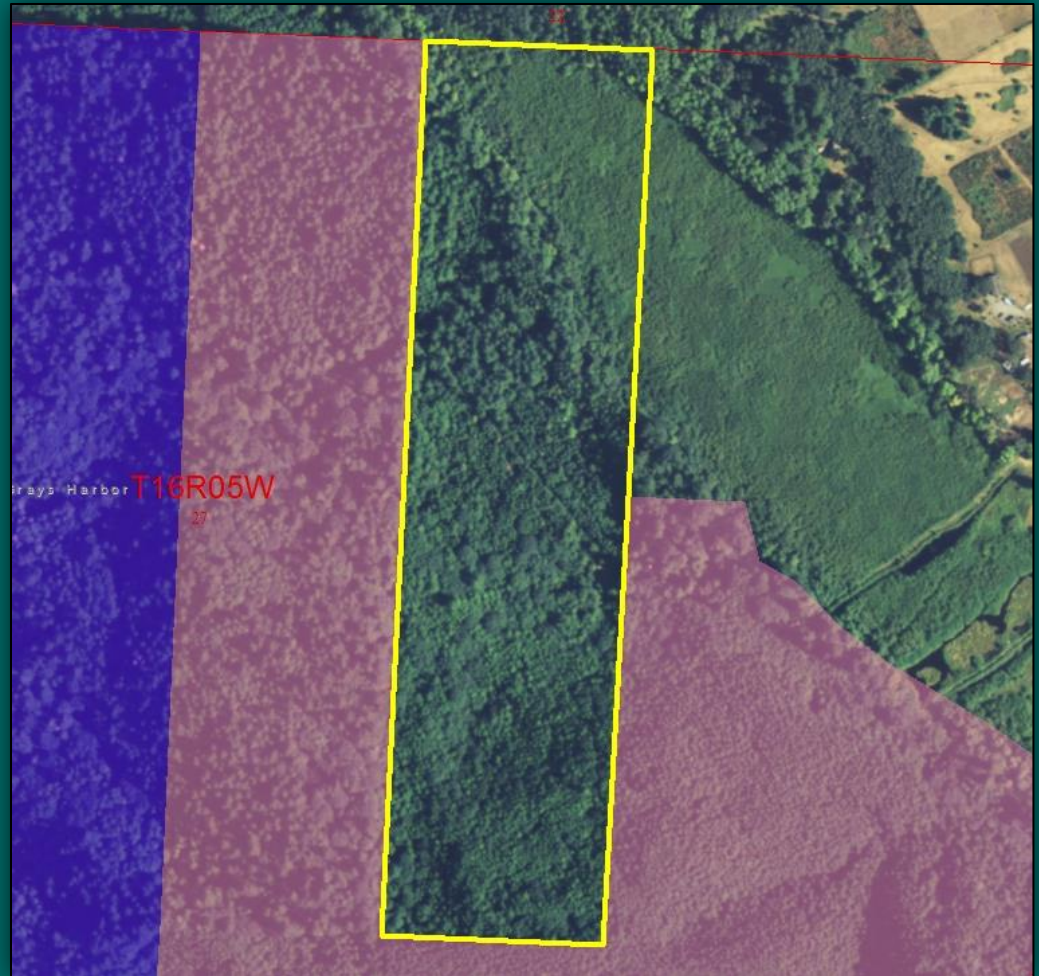
Williams Creek



- ▶ 40 acres
- ▶ SE GHC
- ▶ 2 miles West of Oakville
- ▶ Lower Chehalis SF

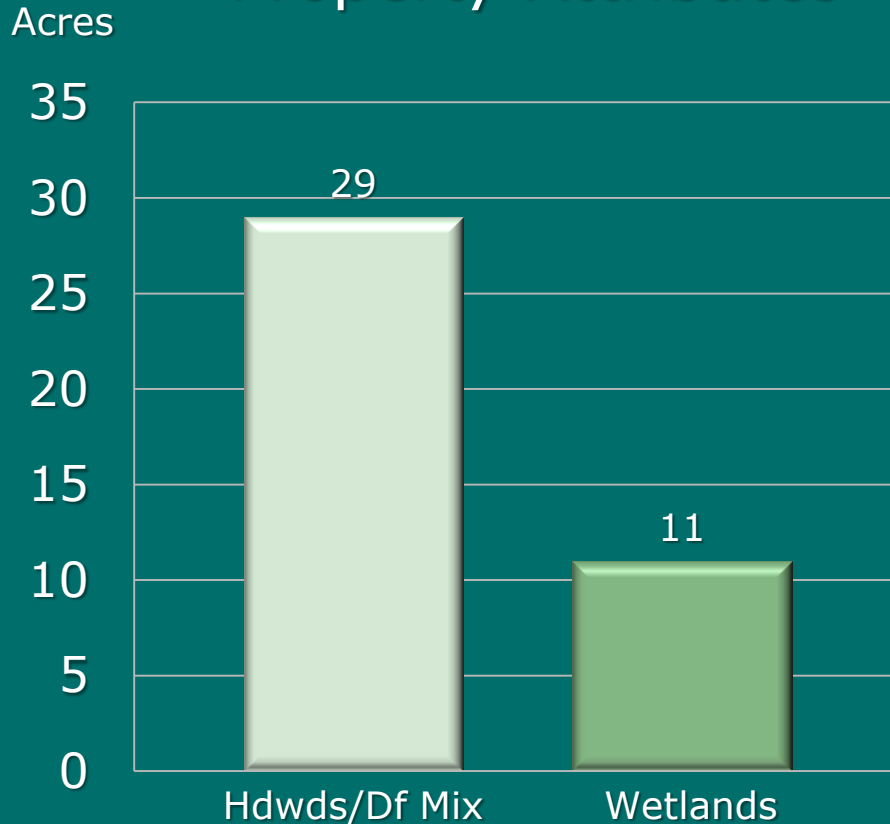
Williams Creek

- ▶ Adds timber land to Lower Chehalis State Forest
- ▶ Future revenue



Williams Creek

Property Attributes



- ▶ Zoning: G-5
- ▶ Site Class II & III
- ▶ 24-yr Age Class

Williams Creek

- ▶ Purchase Price:
\$99,000
- ▶ Compensating Tax:
up to \$6,500



Photo courtesy of Kymm Boire, DNR

Williams Creek

Resolution 1426



Photo courtesy of Kymm Boire, DNR