



# BLANCHARD

## Inter-Trust Exchange & Trust Land Transfer (TLT)

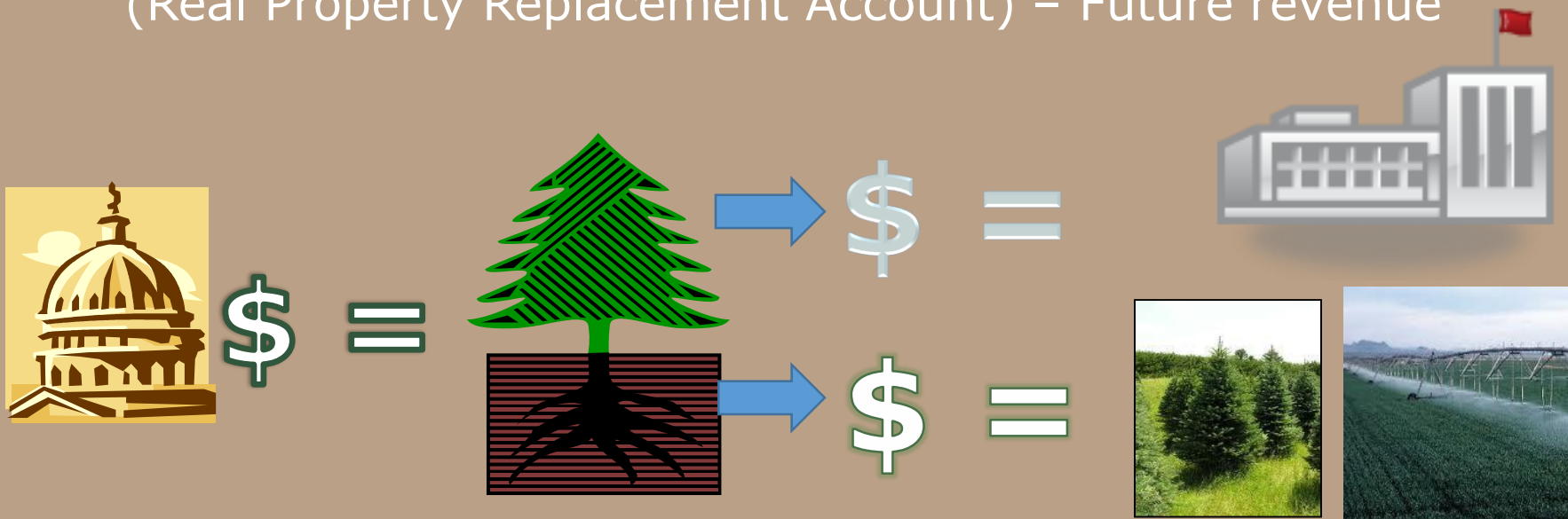
### Skagit County



# Blanchard TLT

## Trust Land Transfer 101

- Timber value from transferred property builds schools (Common School Construction Account) – Immediate funds
- Land value buys replacement property for the trust (Real Property Replacement Account) – Future revenue

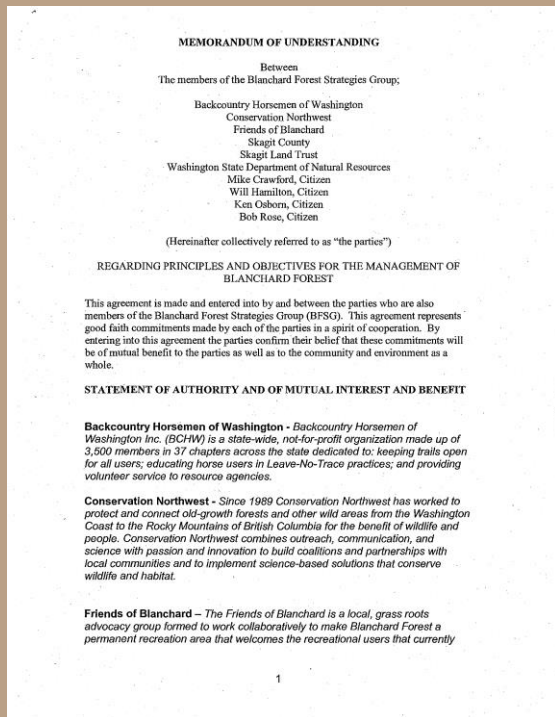


School Trust Property:  
Land + Timber



# Blanchard TLT

## Blanchard History



Differing Values – County Revenue, Forest Industry, Recreation, Conservation

2008 MOU-Blanchard Forest Strategies Group

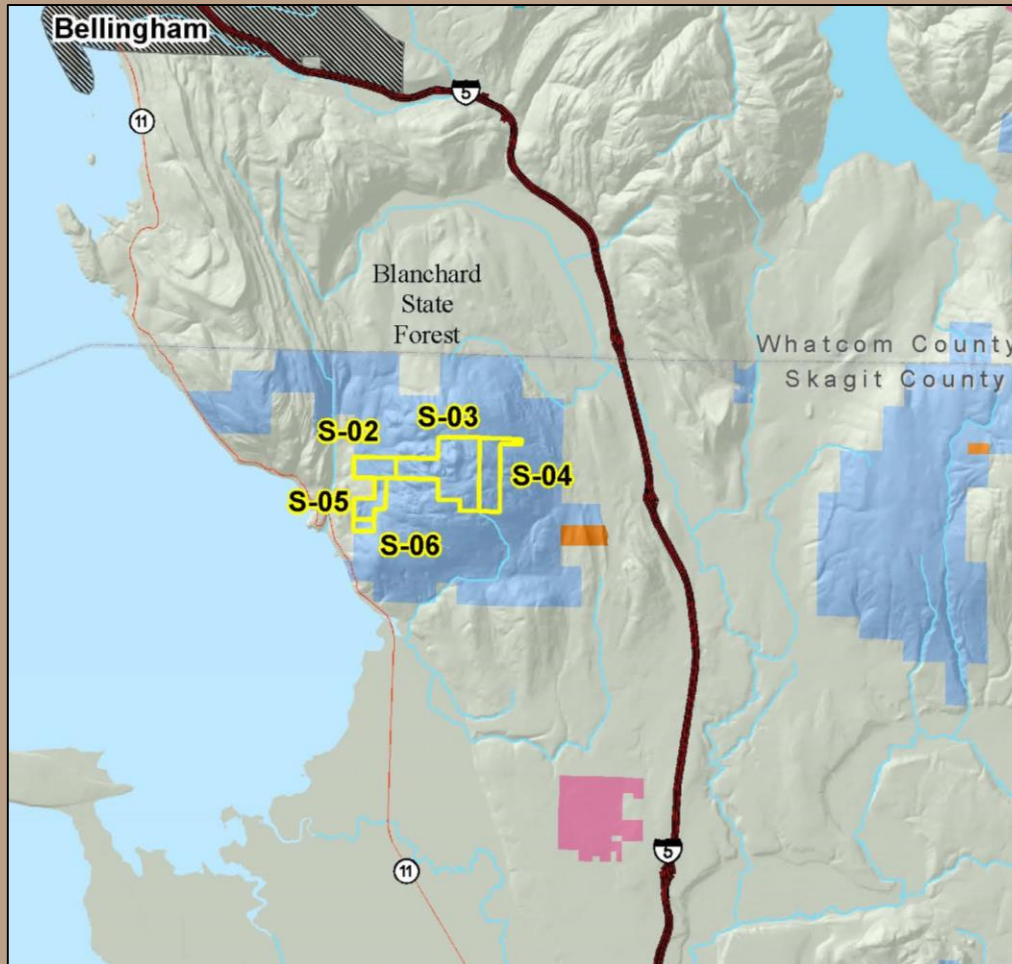
Past Leg. Appropriations to purchase replacement trust land for a portion of the timber value

Trust Land Transfer appropriation for Blanchard Core natural area



# Blanchard Inter-Trust

## Vicinity Map – State Forest Land Trust Parcels



### Exchange:

State Forest Land Trust (SFL) parcels traded to Common School (CS) Trust

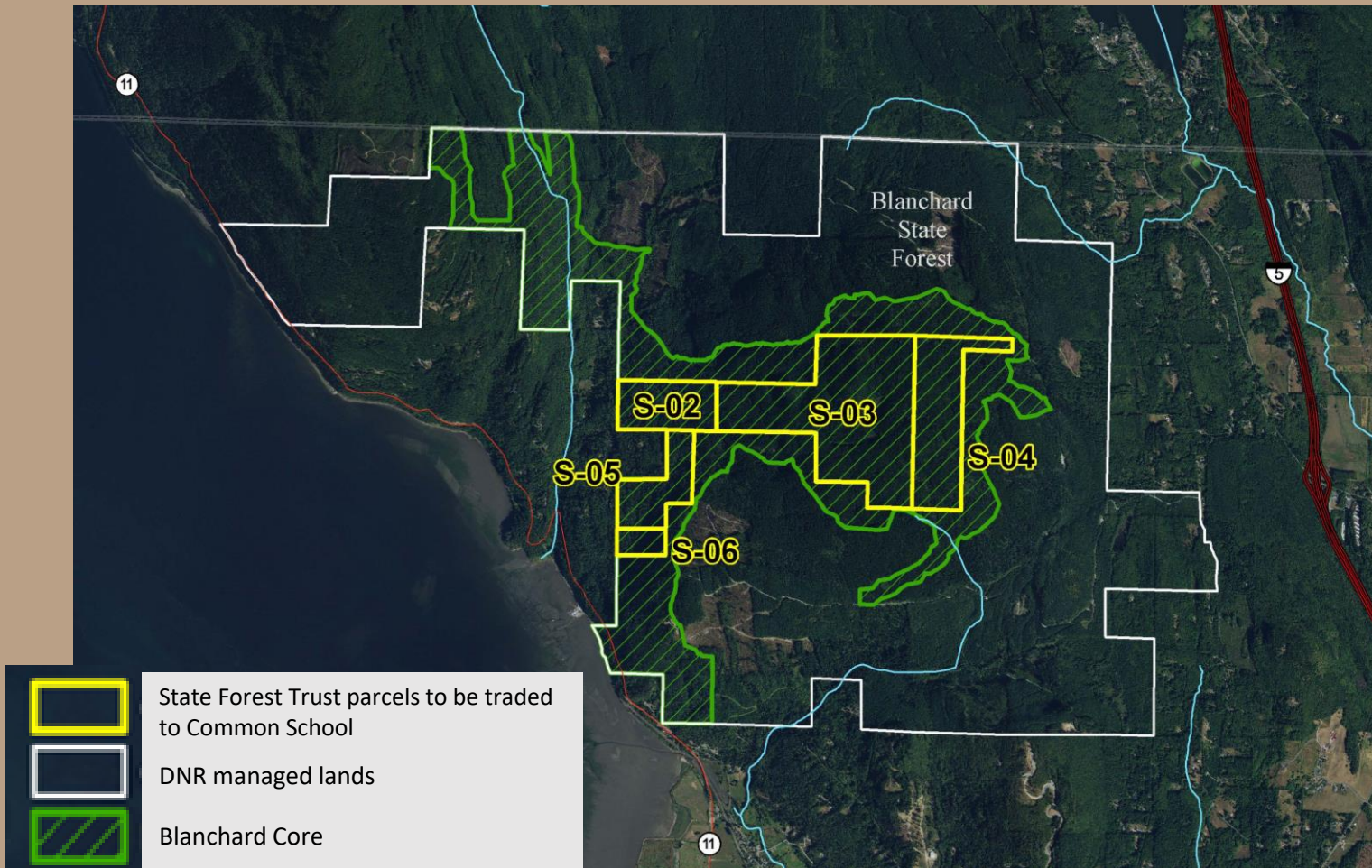
### TLT Transfer:

Common School Trust parcels transferred to Natural Area.



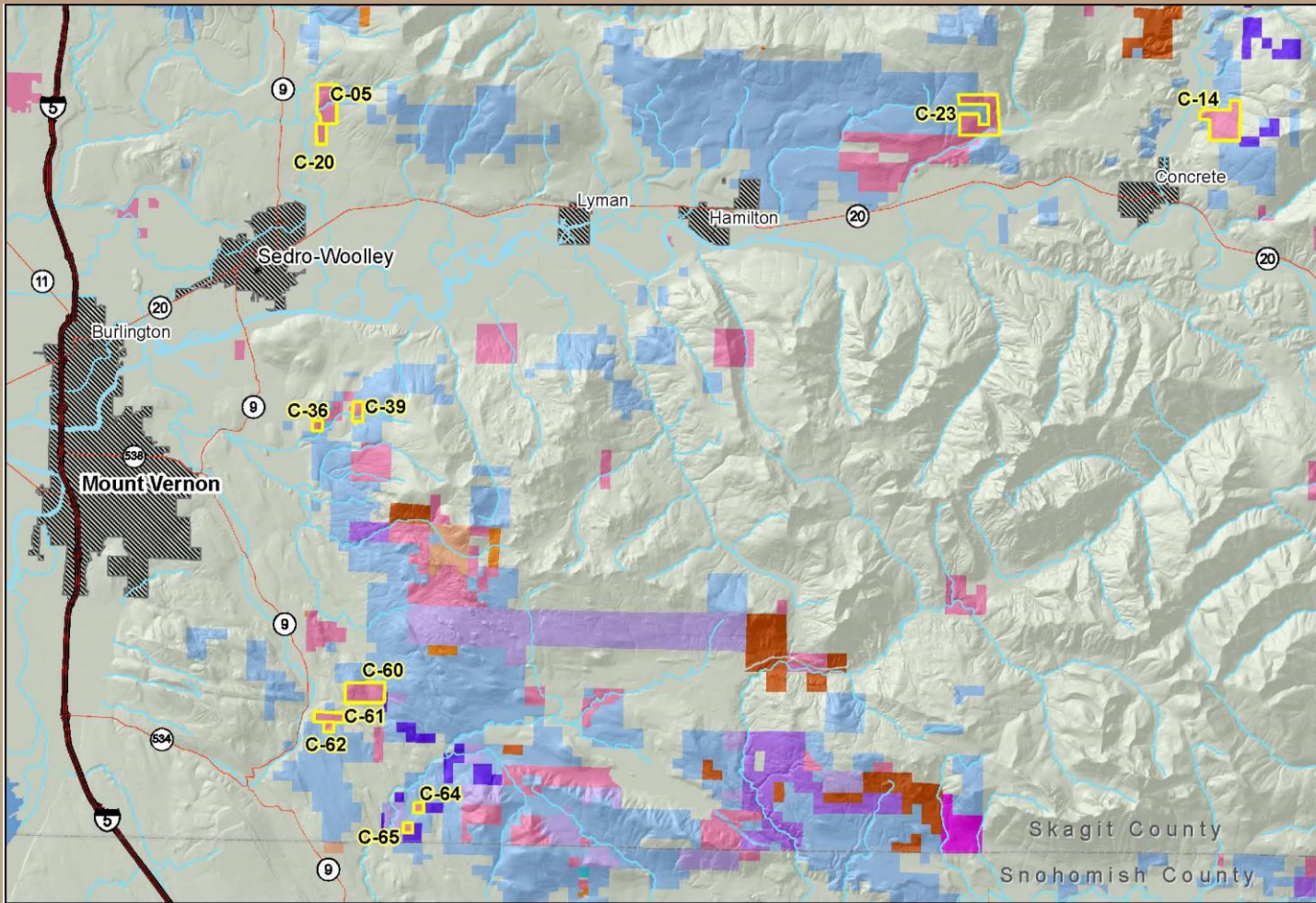
# Blanchard Inter-Trust

## Vicinity Map – State Forest Land Trust Parcels



# Blanchard Inter-Trust

## Vicinity Map - Common School Trust Parcels



**Exchange:**  
Common  
School Trust to State  
Forest Land

Future  
revenue to  
State Forest  
Land Trust

Consolidates  
State Forest  
Land Trust

# Blanchard Inter-Trust

## Public Hearing

Mount Vernon, June 14, 2018

9 spoke in favor:  
Support TLT exchange and transfer, conservation, core protection, replacement of SFL trust lands, hiking, fish and wildlife habitat, para-gliding.  
2 emails in support of hiking, outdoor recreation

0 spoke in opposition





# Blanchard Inter-Trust

## Valuation

Trust	Total Value
State Forest	\$9,810,000
Common School	\$9,809,000

Table shows appraised value before exchange. If exchange is approved, Common School total value will be \$9,810,000 and State Forest Trust total value will be \$9,809,000.



# Blanchard TLT

## Legislative Funding

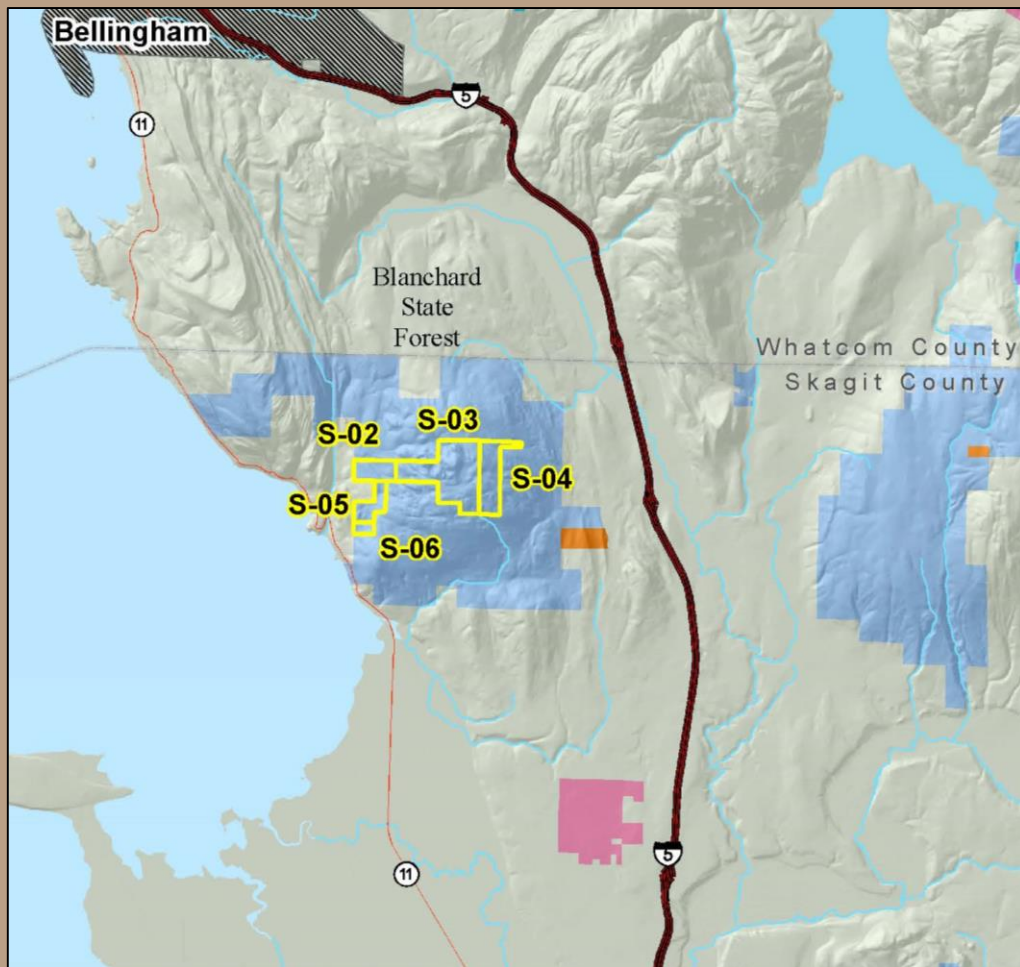


2018 regular session –  
Initial Funding of  
\$10,000,000, Laws  
2018, chapter 2,  
section 3058

Re-appropriated in  
2019 for current  
biennium.

# Blanchard TLT

## Vicinity Map



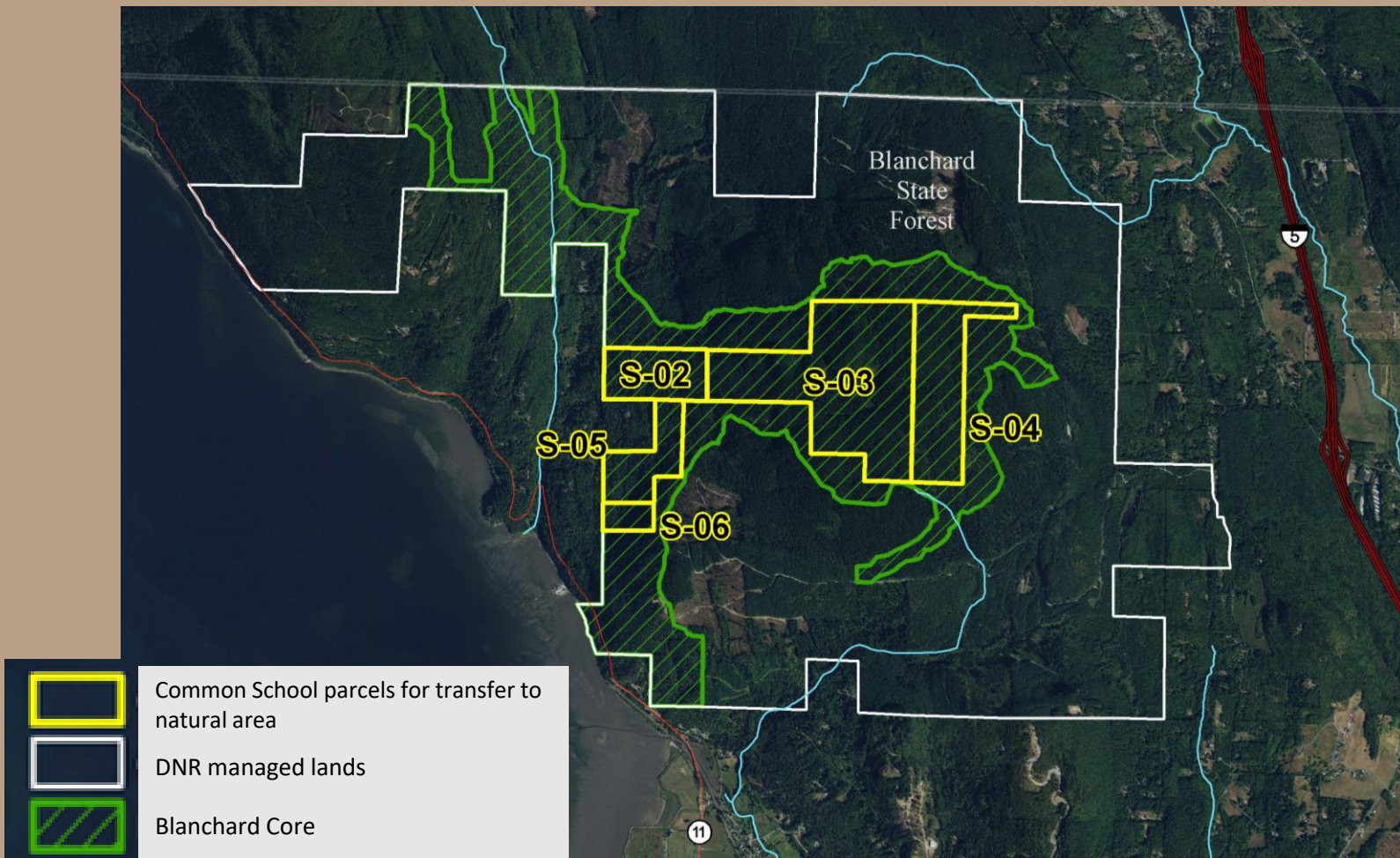
Upon approval of the exchange, the outlined parcels will become Common School Trust (pink color).

These parcels are proposed for transfer to the Natural Areas program (green color).



# Blanchard TLT

## Transfer Parcels



# Blanchard TLT

## Valuation

Trust	Common School Construction Account	Real Property Replacement Account	Total Value
Common School Trust	\$9,184,000	\$626,000	\$9,810,000

Common School Trust property after the transfer will become natural area property.



# Blanchard Inter-Trust & TLT

## Resolutions



Questions ?

Blanchard Exchange Resolution #1548

Blanchard TLT Resolution #1549



