



WASHINGTON STATE DEPARTMENT OF
Natural Resources

Peter Goldmark - Commissioner of Public Lands

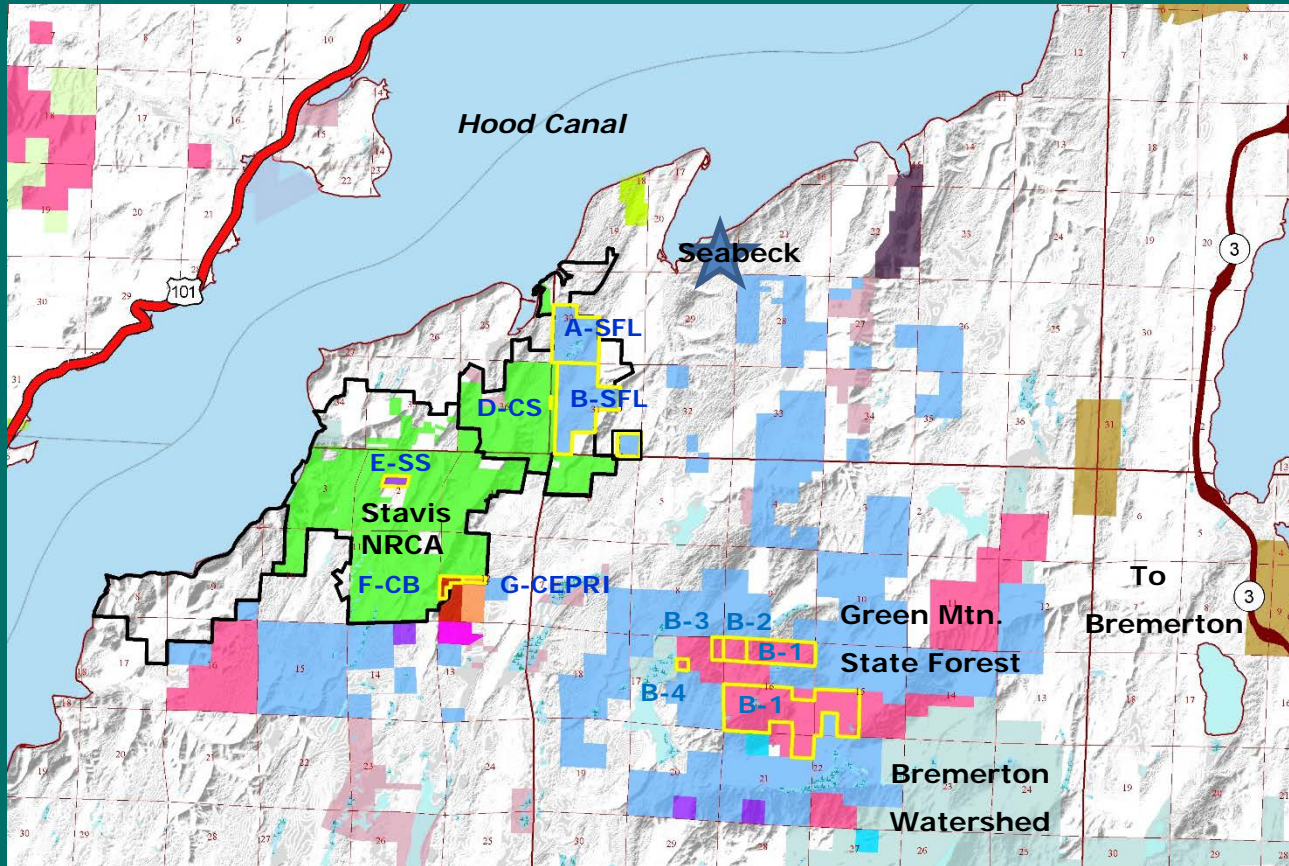
Stavis Trust Land Transfer 02-090369

Stavis Inter-Trust Exchange 86-090899

Kitsap County



Stavis - Location

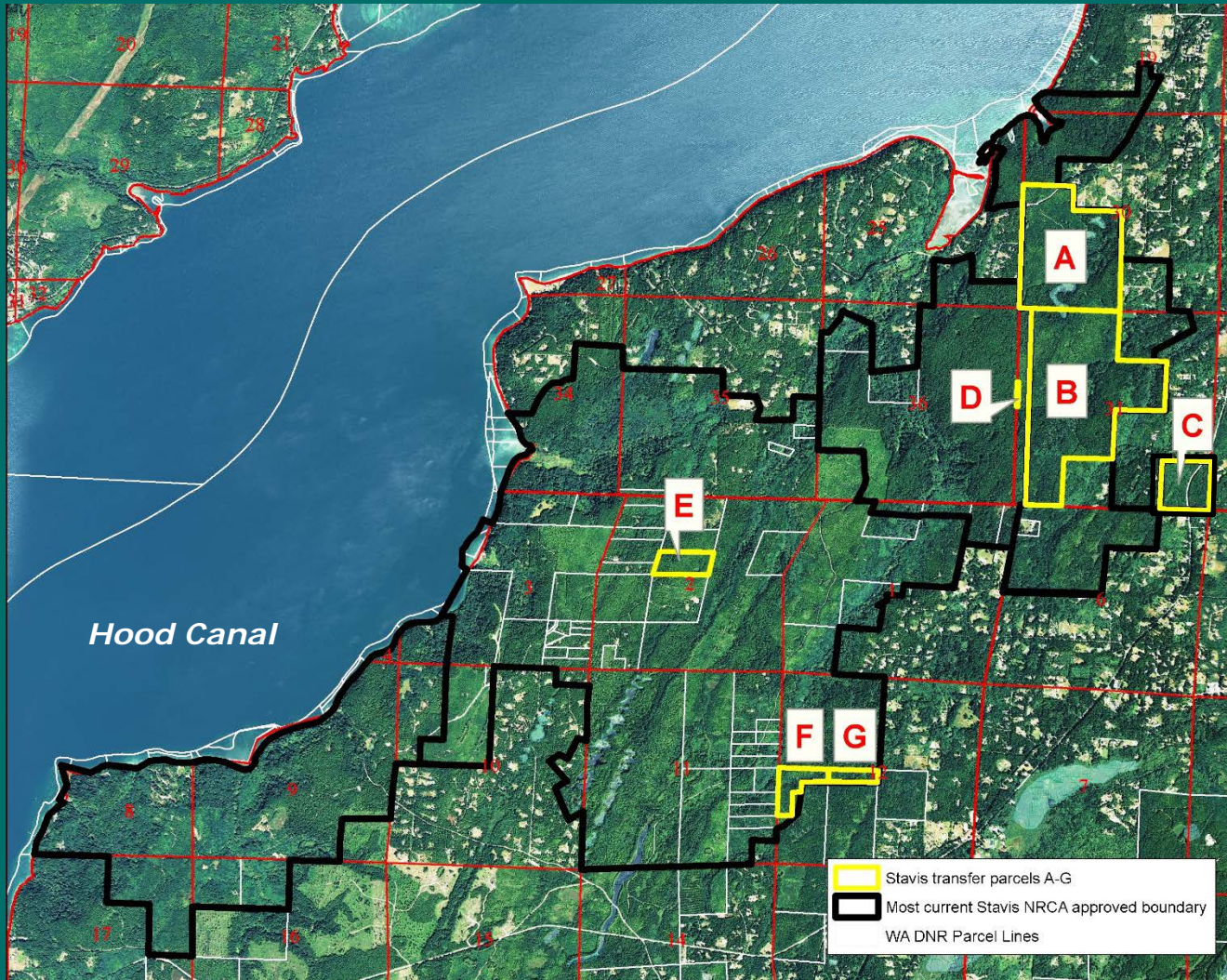


Located near
Seabeck in
Kitsap County

Transfer Parcels
into the Stavis
NRCA (A to G)

Common School
Parcels in Green
Mtn. State Forest

Stavis - TLT



Transfer parcels
A-G into the
existing Stavis
NRCA

Proposed transfer
of 553 acres

Common School
prior to transfer

Remaining trust
land within NRCA

Stavis – TLT



Heritage quality
plant
communities

Habitat for Puget
Sound Salmon

Water Quality
enhancement for
Hood Canal

Low impact
recreation

Stavis – TLT

Appraised Value of Transfer Property

Timber (4,342 Mbf)	\$ 451 /MBF	\$ 1,960,000
Land (553.21 acres)	\$ 6,049 /acre	\$ 3,346,200
Total – TLT Transfer	\$ 9,592 / acre	\$ 5,306,200

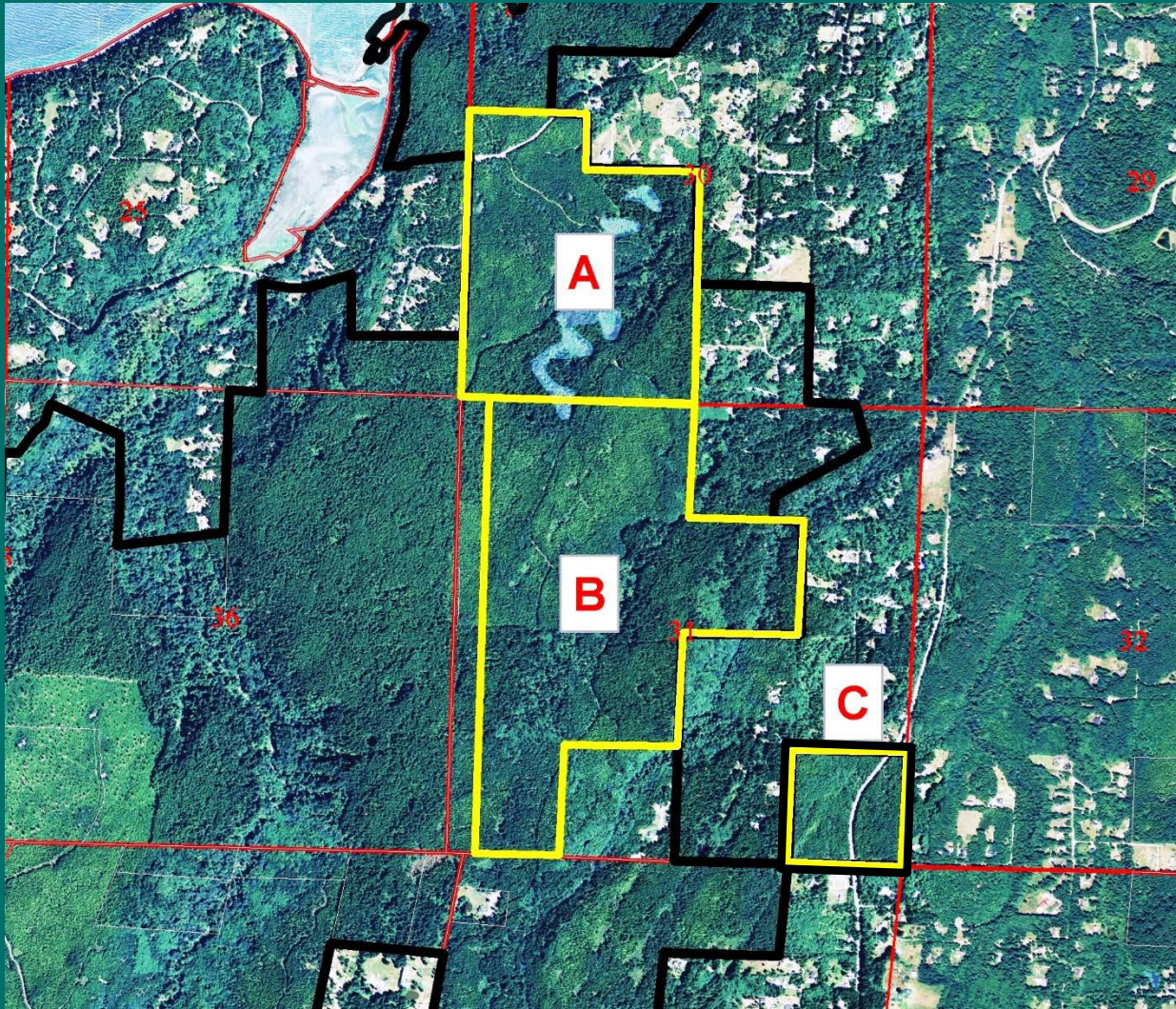
Distribution of Funds

Timber Value - Common School Construction Account

Land Value - Real Property Replacement Account



Stavis Inter-Trust Exchange

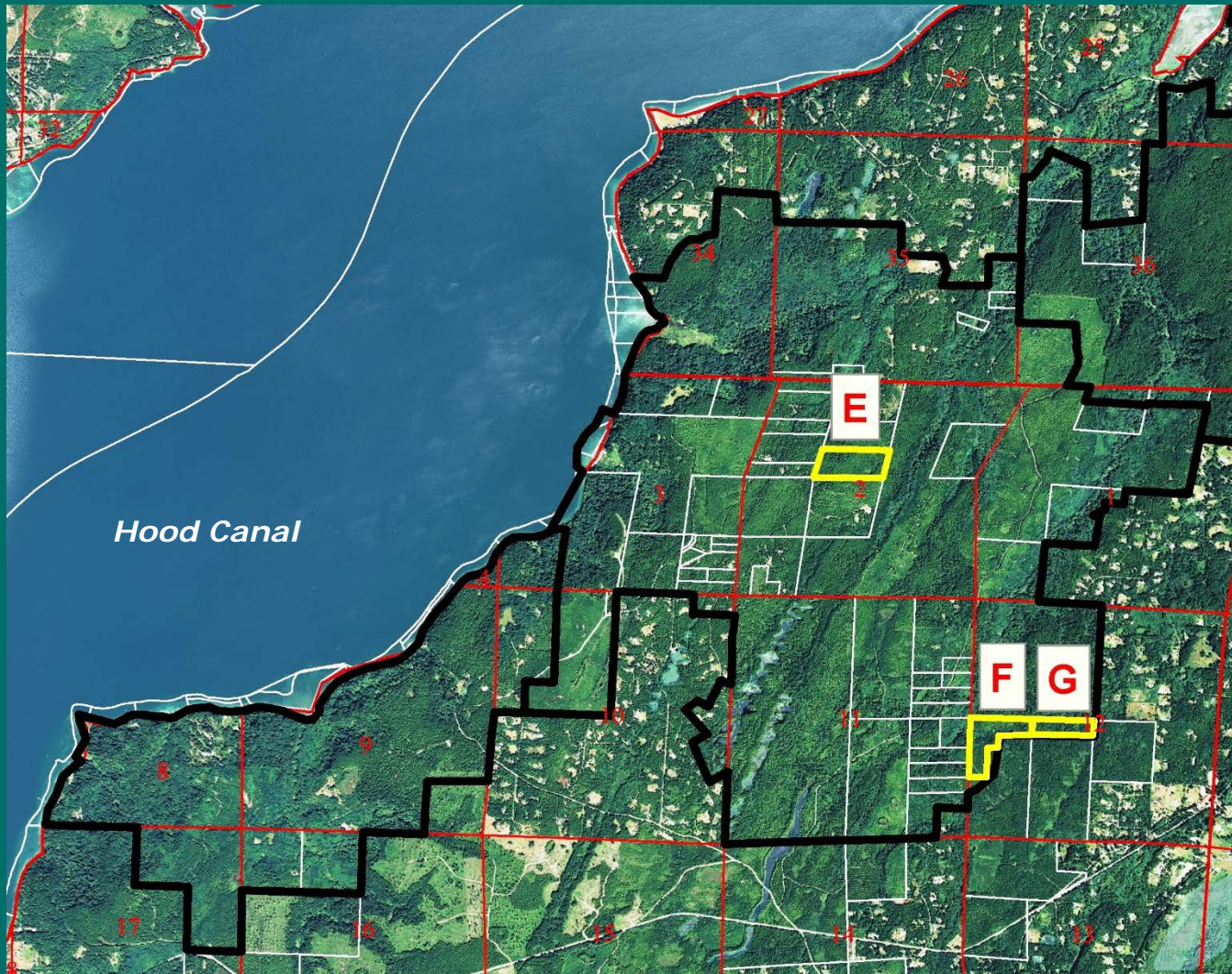


Parcels A, B, C
will become
Common
School Trust

502 acres -
State Forest
Land Trust
(A,B,C)

Part of the
proposed TLT
transfer

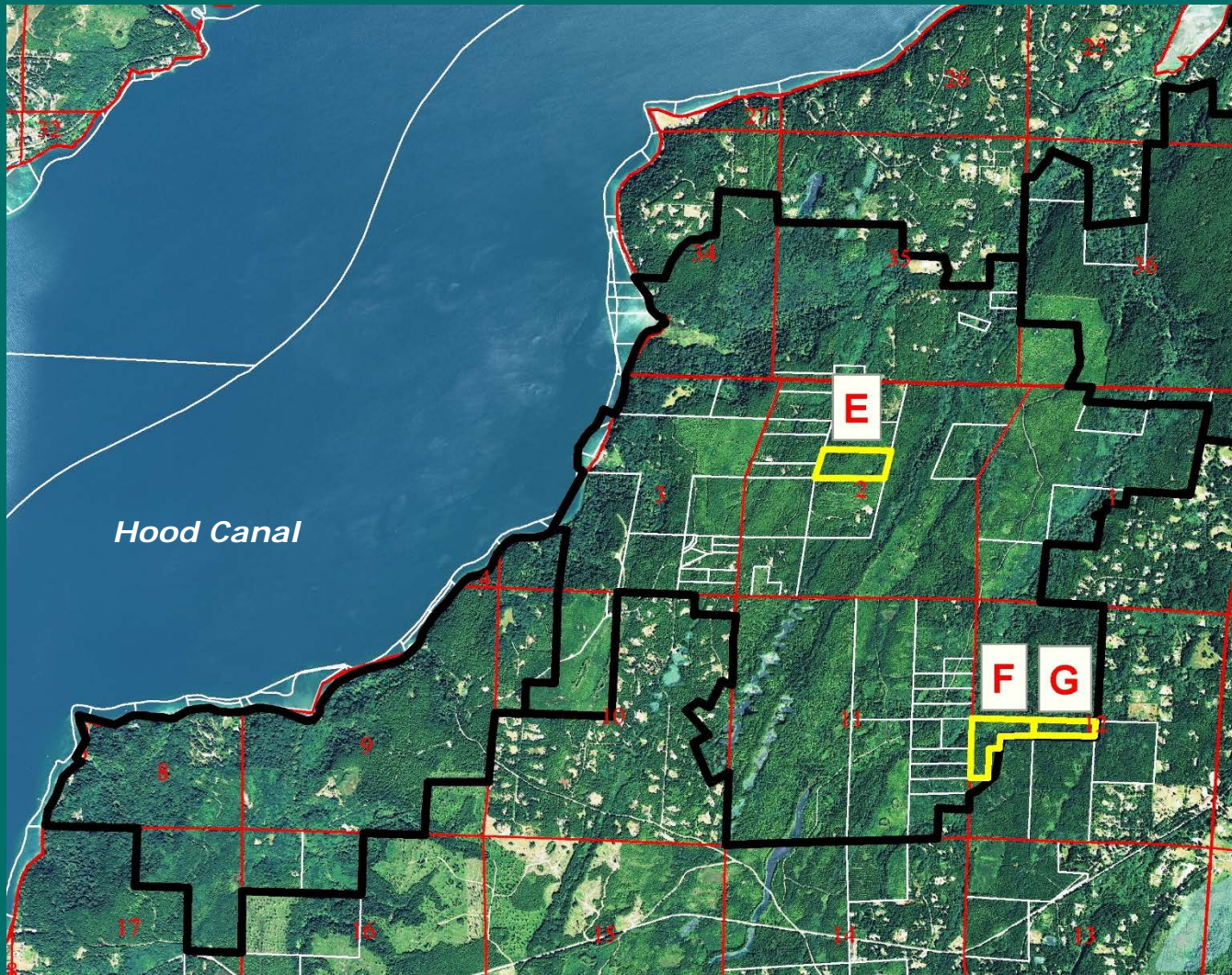
Stavis Inter-Trust Exchange



Parcel E will
become
Common
School Trust

21 acres
currently
Scientific
School Trust

Stavis Inter-Trust Exchange

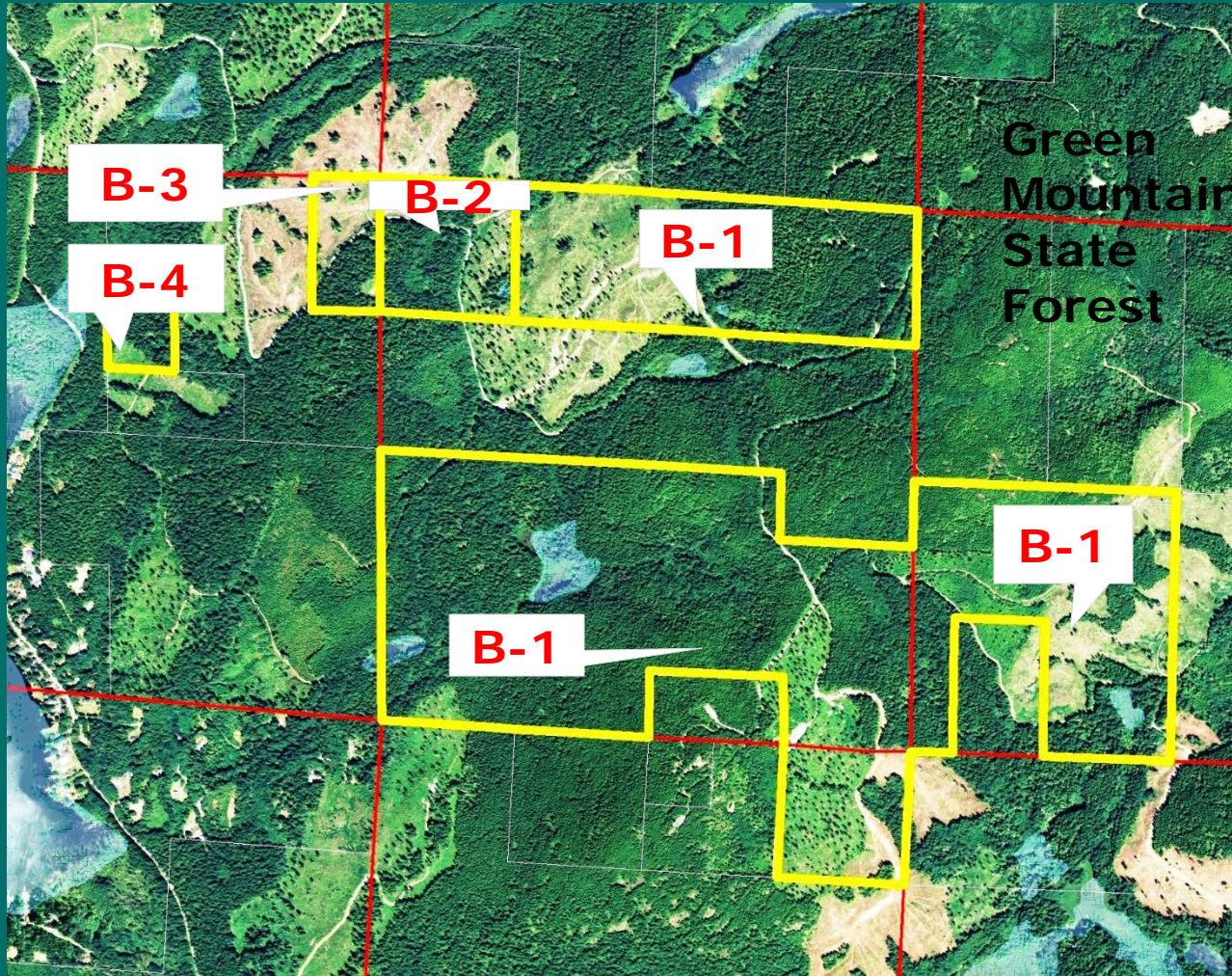


Parcel F & G
will become
Common
School Trust

Parcel F - 20
acres currently
CB Trust

Parcel G – 10
acres currently
CEPRI Trust

Stavis Inter-Trust Exchange



B-1 becomes State Forest Land Trust; 531.86 ac

B-2 becomes Scientific School Trust; 41.40 ac

B-3 becomes Capitol Trust; 19.81 ac

B-4 becomes CEPRI Trust; 9.86 ac

Stavis Inter-Trust Exchange

Parcels A,B,C (State Forest Land to CS)

Timber (4,342 Mbf)	\$ 451 /MBF	\$ 1,960,000
Land (501.89 acres)	\$ 5,515 /acre	\$ 2,768,000
Total	\$9,420 /acre	\$4,728,000

Parcel B-1 (CS to State Forest Land)

Timber (9,280 Mbf)	\$ 355 /acre	\$ 3,291,000
Land (531.86 acres)	\$ 2,790 /acre	\$ 1,484,000
Total	\$8,978 /acre	\$4,775,000

Stavis Inter-Trust Exchange

Parcel E (Scientific School to CS)

Timber (0 Mbf)	\$ 0 /MBF	\$ 0
Land (20.55 acres)	\$ 13,285 /acre	\$ 273,000
Total	\$13,285 /acre	\$273,000

Parcel B-2 (CS to Scientific School)

Timber (389 Mbf)	\$ 445 /MBF	\$ 173,000
Land (41.40 acres)	\$2,464 /acre	\$ 102,000
Total	\$6,643 /acre	\$275,000

Stavis Inter-Trust Exchange

Parcel F (Capitol Building to CS)

Timber (0 Mbf)	\$ 0 /MBF	\$ 0
Land (20.00 acres)	\$ 8,600 /acre	\$ 172,000
Total	\$8,600 /acre	\$172,000

Parcel B-3 (CS to Capitol Building)

Timber (269 Mbf)	\$ 446 /MBF	\$120,000
Land (19.81 acres)	\$ 2,574 /acre	\$ 51,000
Total	\$8,632 /acre	\$171,000

Stavis Inter-Trust Exchange

Parcel G (CEP&RI to CS)

Timber (0 Mbf)	\$ 0 /MBF	\$ 0
Land (10.00 acres)	\$ 13,200 /acre	\$132,000
Total	\$13,200 /acre	\$132,000

Parcel B-4 (CS to CEP&RI)

Timber (247 Mbf)	\$ 441 /MBF	\$109,000
Land (9.86 acres)	\$ 2,434 /acre	\$ 24,000
Total	\$13,489 /acre	\$133,000

Stavis Inter-Trust Exchange

- **Joint public hearing in Seabeck – September 3, 2014**
- **Twenty eight meeting attendees**
- **Eight persons testified in favor of the NRCA expansion**
- **One person testified in favor of the exchange**
- **Two letters desiring more information**
- **No known opposition to the exchange**



Stavis Inter-Trust Exchange



Questions ?

**Stavis Inter-Trust
Exchange**

Resolution #1451

**Stavis Trust Land
Transfer**

Resolution #1452



WASHINGTON STATE DEPARTMENT OF
Natural Resources

Peter Goldmark - Commissioner of Public Lands