

# Klickitat Canyon Exchange

86-091402

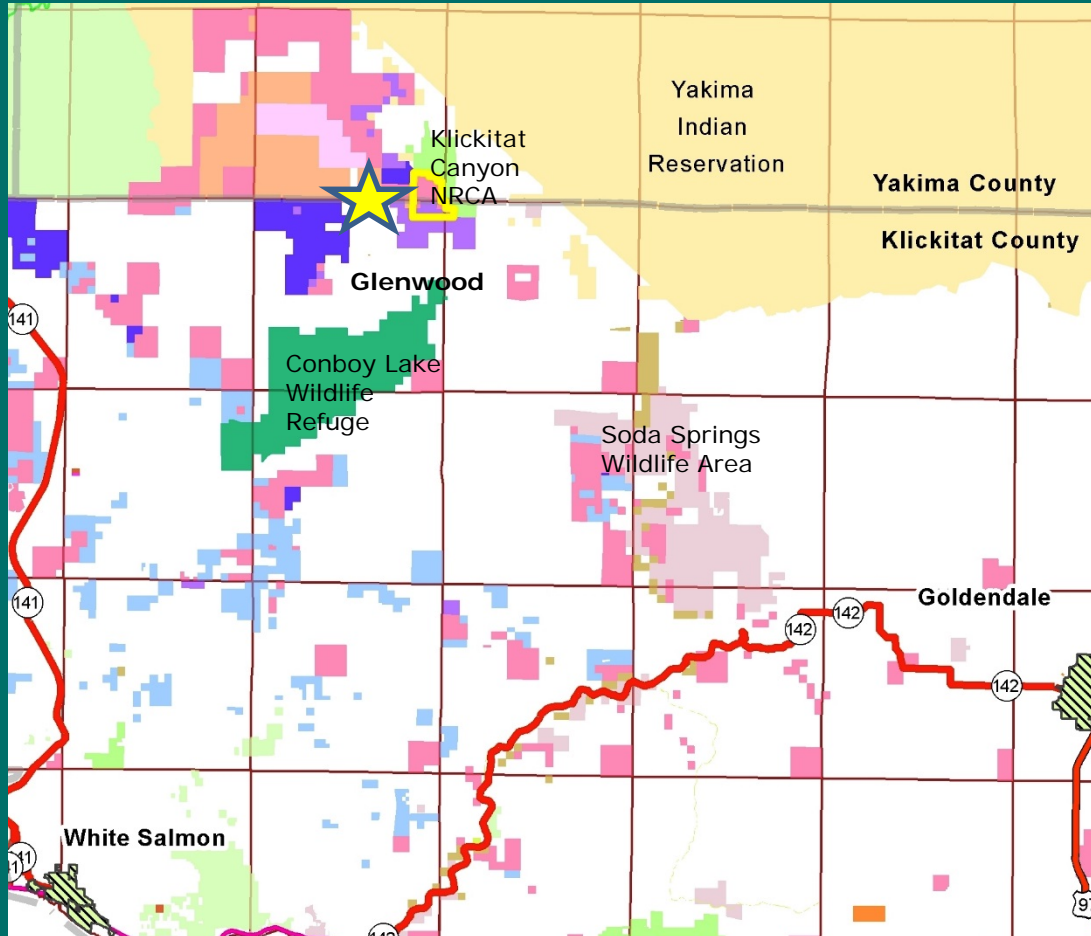
# Klickitat Canyon TLT

02-090360

# Klickitat & Yakima Counties



# Klickitat Canyon - Vicinity

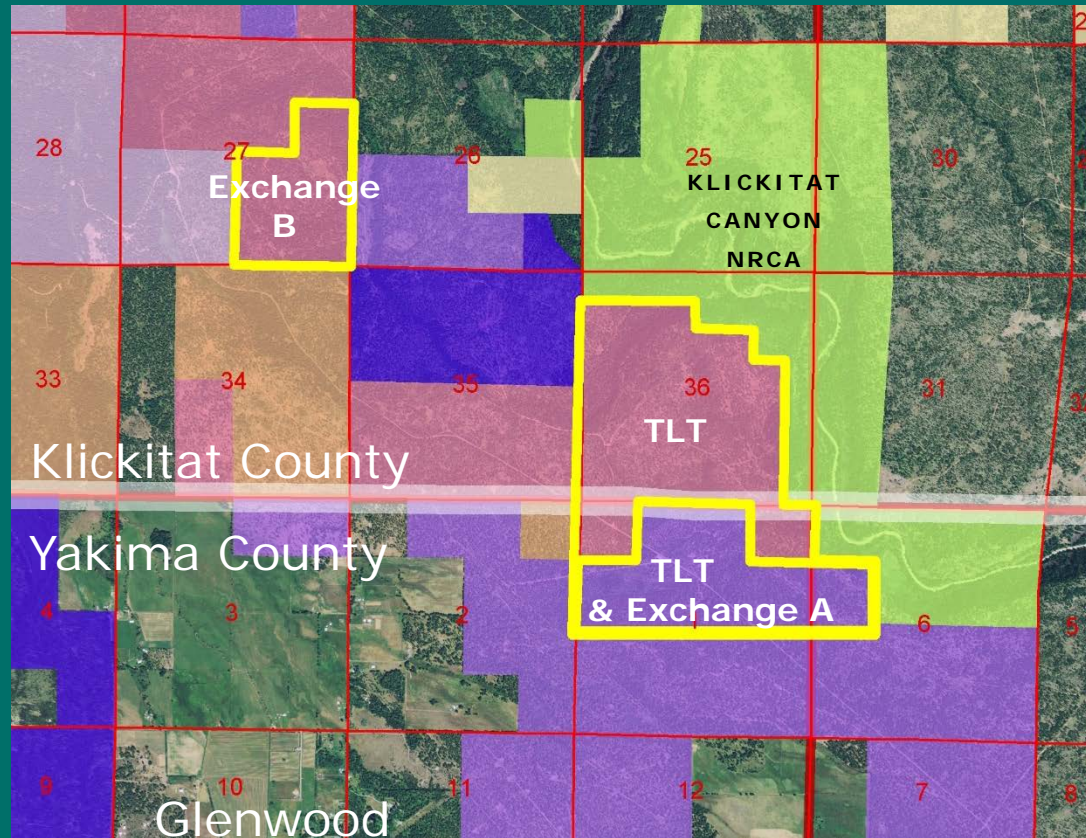


**Klickitat and  
Yakima Counties**

**Near Glenwood**

**Near other public  
conservation sites**

# Klickitat Canyon - Vicinity

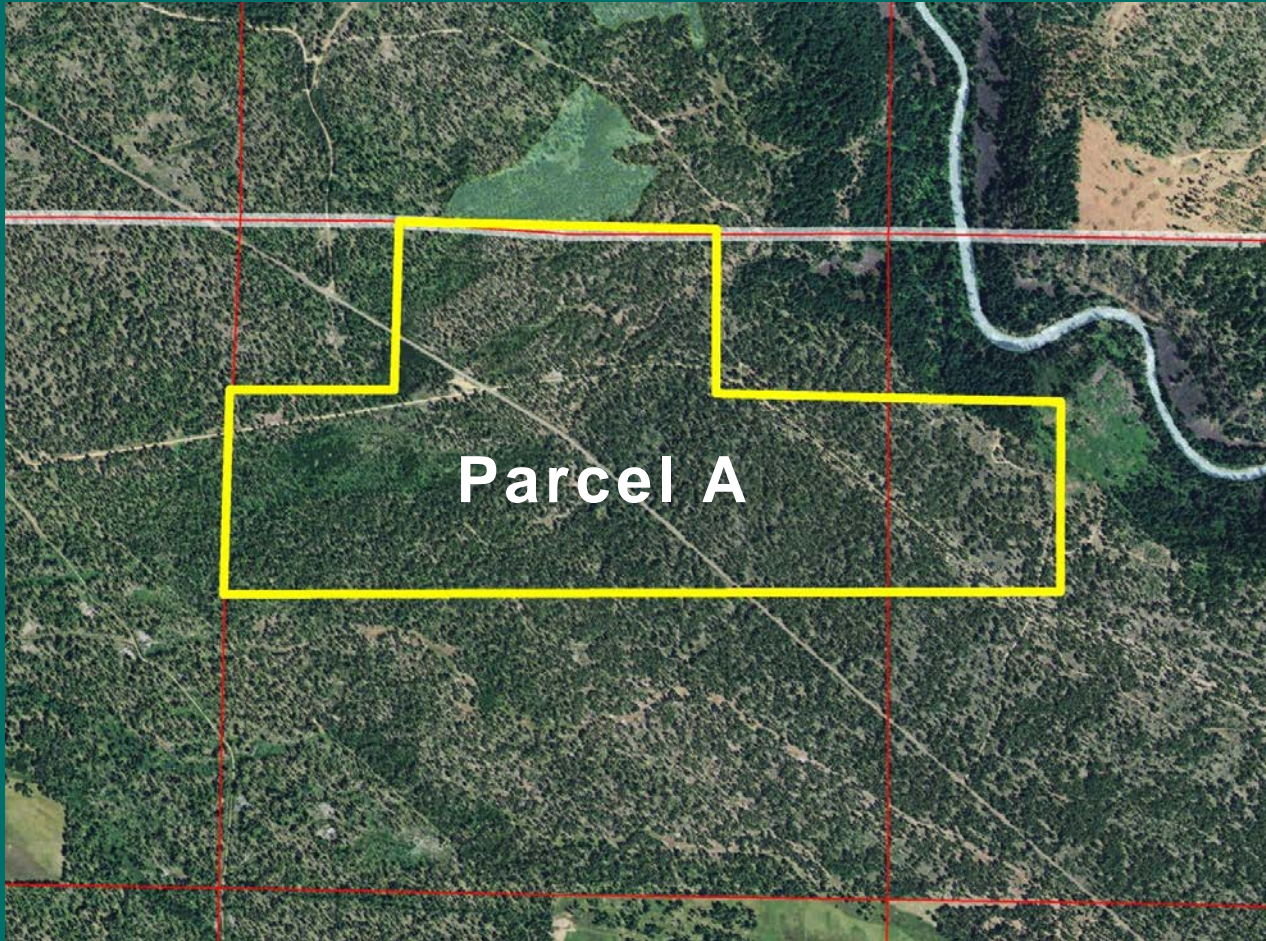


Adjacent to the existing 1,516 acre Klickitat Canyon NRCA

Transfer 819 acres - Klickitat Canyon NRCA

Inter-Trust Exchange & Trust Land Transfer

# Klickitat Canyon – Exchange

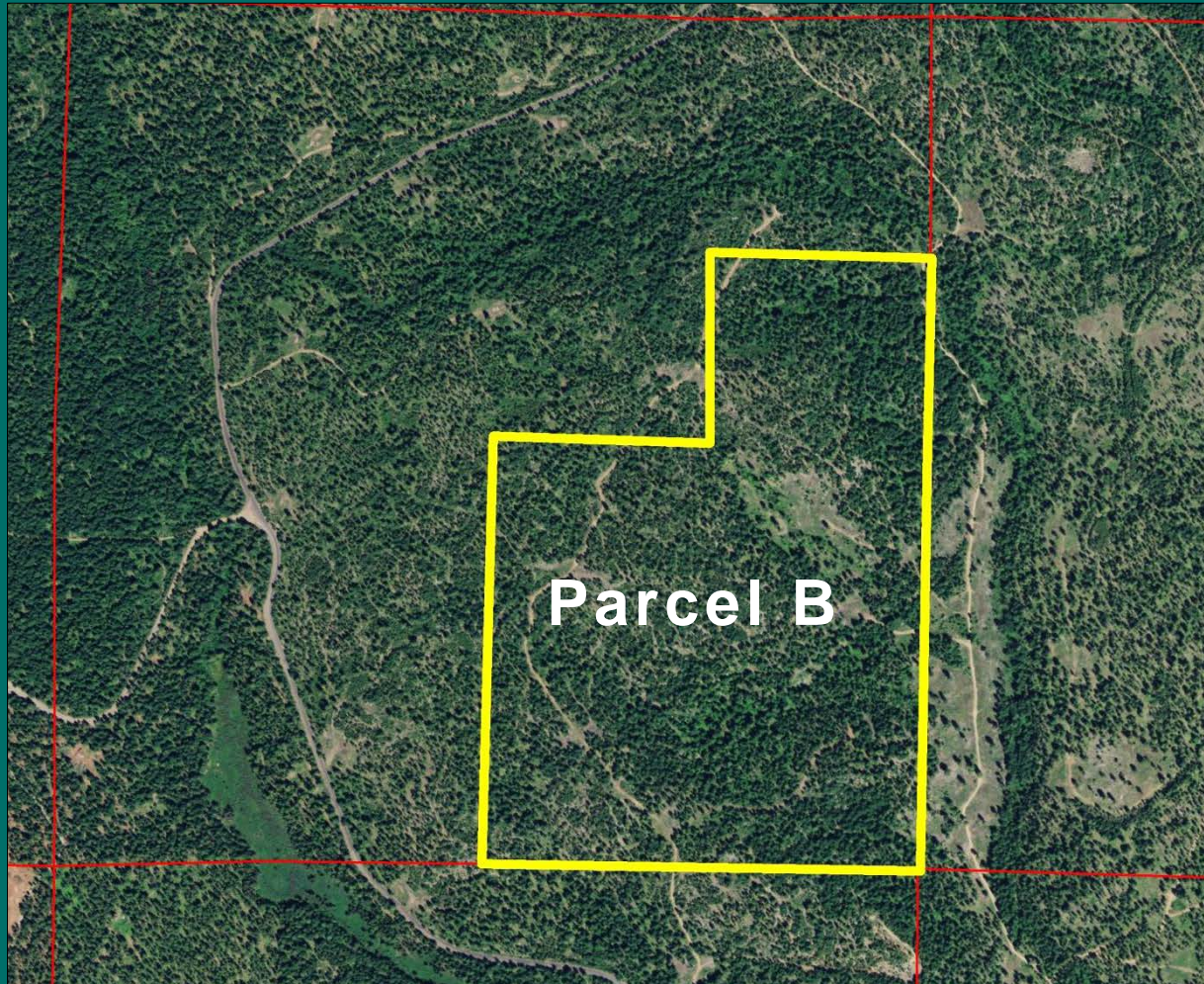


**Parcel A –  
Scientific to  
Common  
School**

**286 acres**

**Part of the  
proposed TLT  
transfer**

# Klickitat Canyon – Exchange



**Parcel B -  
Common School  
to Scientific  
School**

**195 acres**

**Managed as  
trust land in the  
future**

# Klickitat Canyon - Exchange

## Parcel A (Scientific to CS) – Parcel Values

Timber (2,569 Mbf)	\$345,000	\$134/Mbf
Land (286.49 acres)	\$240,000	\$838/acre
<b>Total – Parcel A</b>	<b>\$585,000</b>	\$2,042/acre
	Equivalent parcel value to B	

## Parcel B (CS to Scientific) – Parcel Values

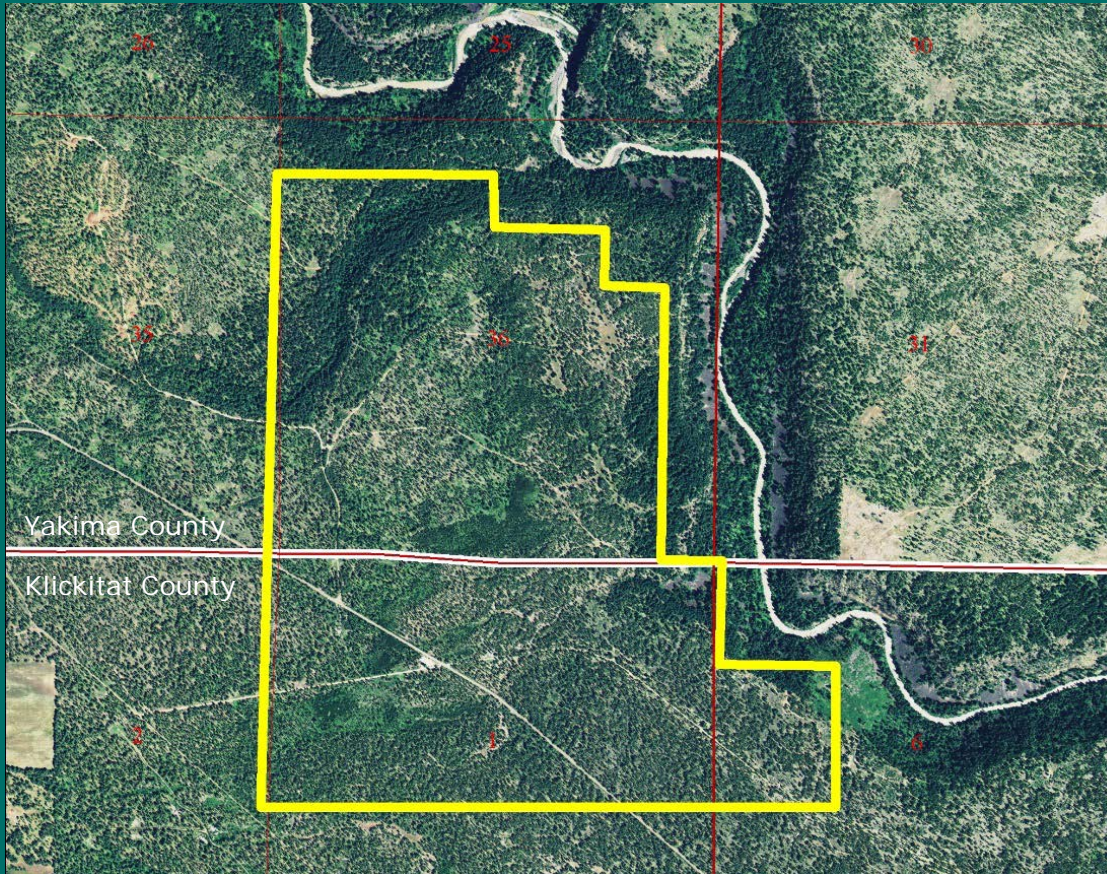
Timber (1,994 Mbf)	\$428,000	\$215/Mbf
Land (195.00 acres)	\$163,000	\$836/acre
<b>Total – Parcel B</b>	<b>\$591,000</b>	\$3,031/acre
	Equivalent parcel value to A	

# Klickitat Canyon – Exchange

- **Public Hearing in Goldendale – August 6, 2014**
- **Four meeting attendees**
- **No testimony at the hearing**
- **Two letters of support**
  - Washington Dept. of Fish and Wildlife**
  - Yakama Indian Nation Fisheries**



# Klickitat Canyon - TLT



Transfer to  
Klickitat  
Canyon NRCA

Yakima and  
Klickitat  
Counties

819 acres



# Klickitat Canyon – TLT



# Klickitat Canyon – TLT

## Appraised Value of Transfer Property

Timber (8,527 Mbf)	\$ 1,420,000	\$167/Mbf
Land (819.38 acres)	\$ 685,000	\$836/acre
<b>Total – TLT Transfer</b>	<b>\$ 2,105,000</b>	<b>\$2,569/acre</b>

## Distribution of Funds

**Timber Value - Common School Construction Account**

**Land Value - Real Property Replacement Account**

# Klickitat Canyon – TLT



Questions ?

**Klickitat Canyon  
Inter-Trust  
Exchange  
Resolution #1443**

**Klickitat Canyon TLT  
Resolution #1444**



WASHINGTON STATE DEPARTMENT OF  
**Natural Resources**

---

**Peter Goldmark** - Commissioner of Public Lands