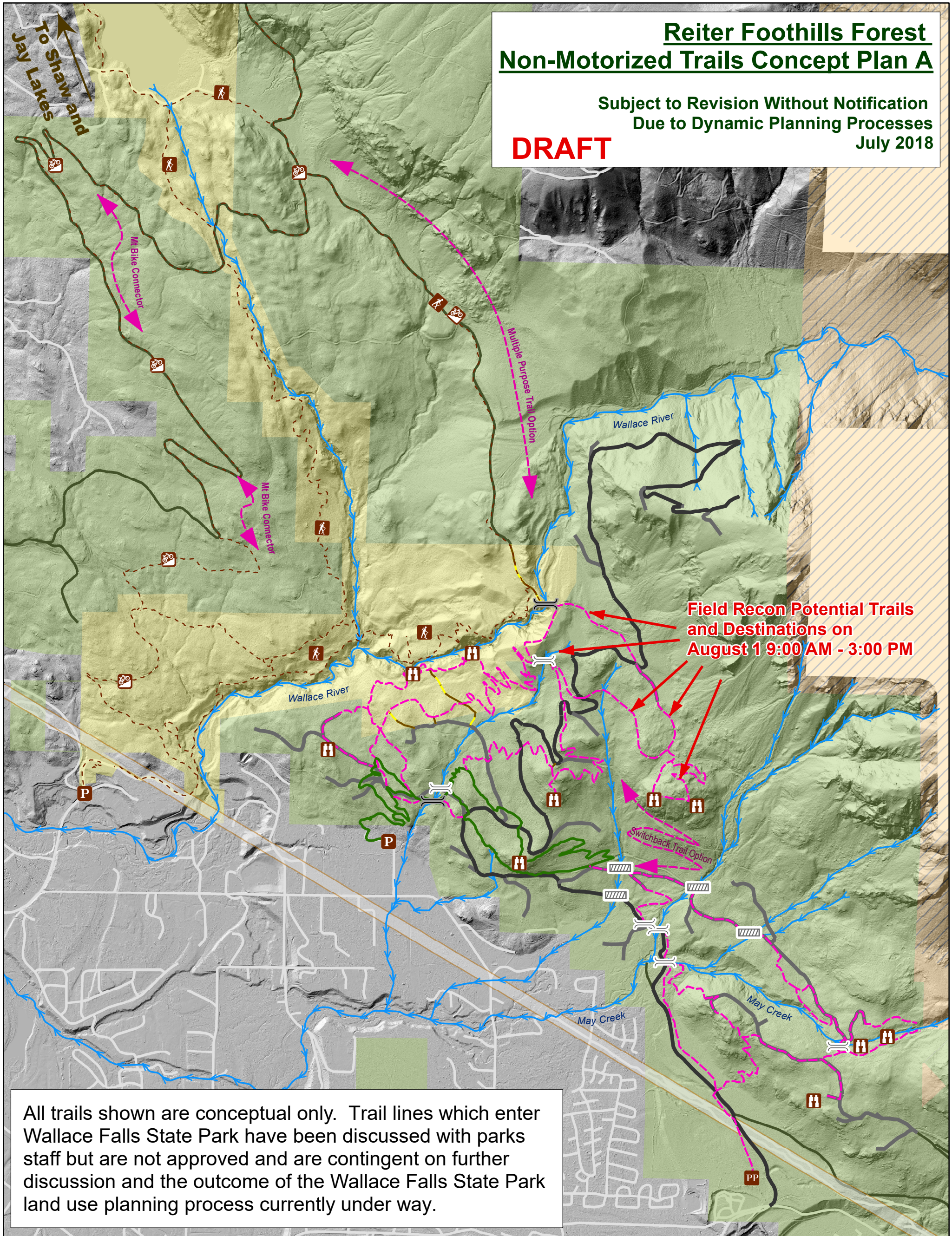


Reiter Foothills Forest Non-Motorized Trails Concept Plan A

Subject to Revision Without Notification
Due to Dynamic Planning Processes
July 2018

DRAFT



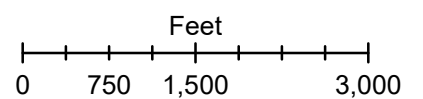
Field Recon Potential Trails
and Destinations on
August 1 9:00 AM - 3:00 PM

All trails shown are conceptual only. Trail lines which enter Wallace Falls State Park have been discussed with parks staff but are not approved and are contingent on further discussion and the outcome of the Wallace Falls State Park land use planning process currently under way.

- Trailhead
- Installed Bridge
- Possible Bridge Site
- Possible Fish Culvert Site
- Potential Trailhead
- Potential View Point
- Wallace Falls Circulation
- Reiter Non-Moto Concept Trails**
- Complete Trail: 3.6 miles
- Concept Construction Access: 0.75 miles
- Concept Trail: 13.25 miles
- Other DNR Roads: Likely to be Abandoned
- Proposed Main Line Roads

- DNR Managed Lands
- Wilderness Areas
- State Parks
- Federal Lands
- Other Lands

DRAFT



Map produced in 2018 by
Washington State
Department of Natural Resources,
Cascade District Recreation, bhal490



WASHINGTON STATE DEPARTMENT OF
NATURAL RESOURCES