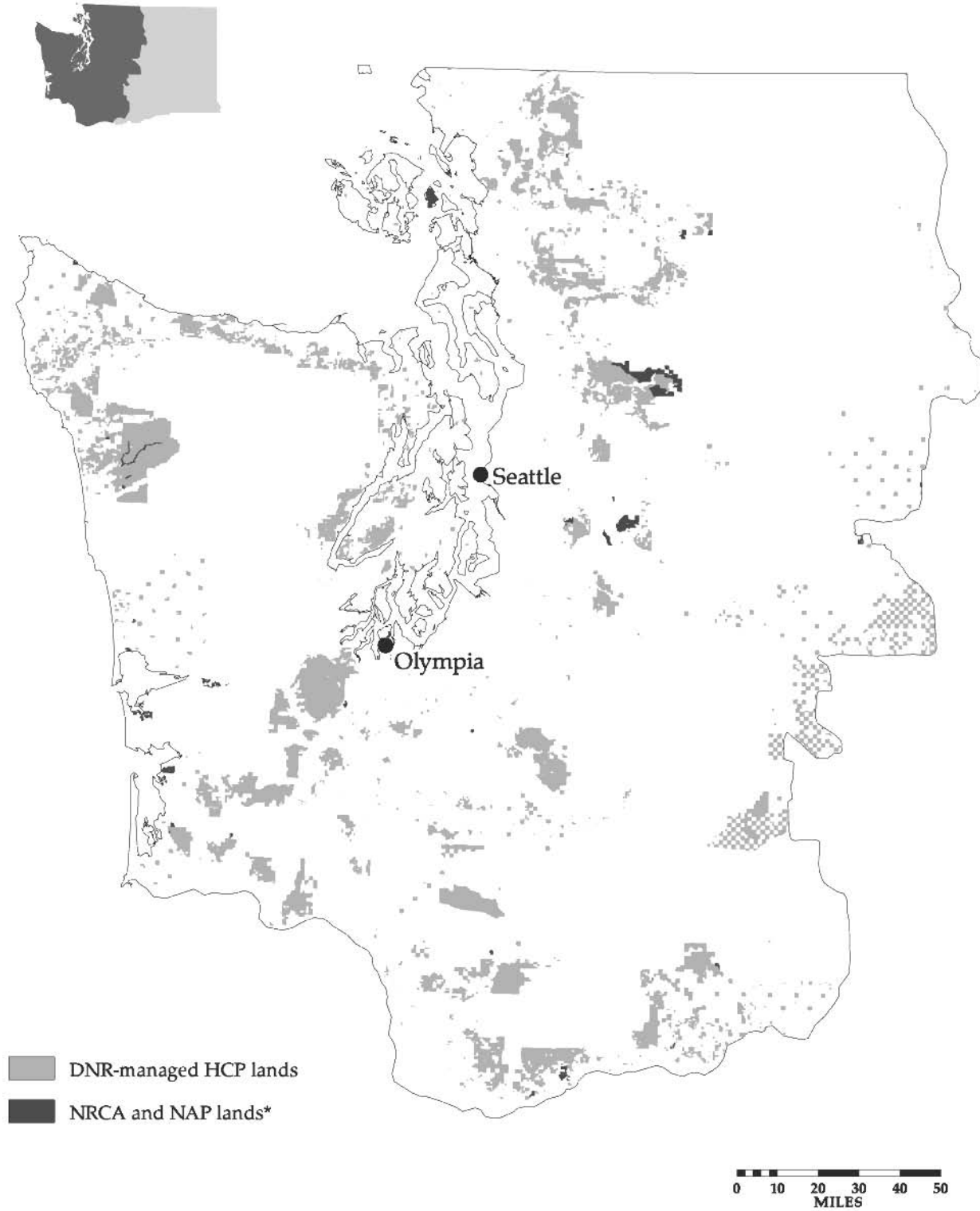
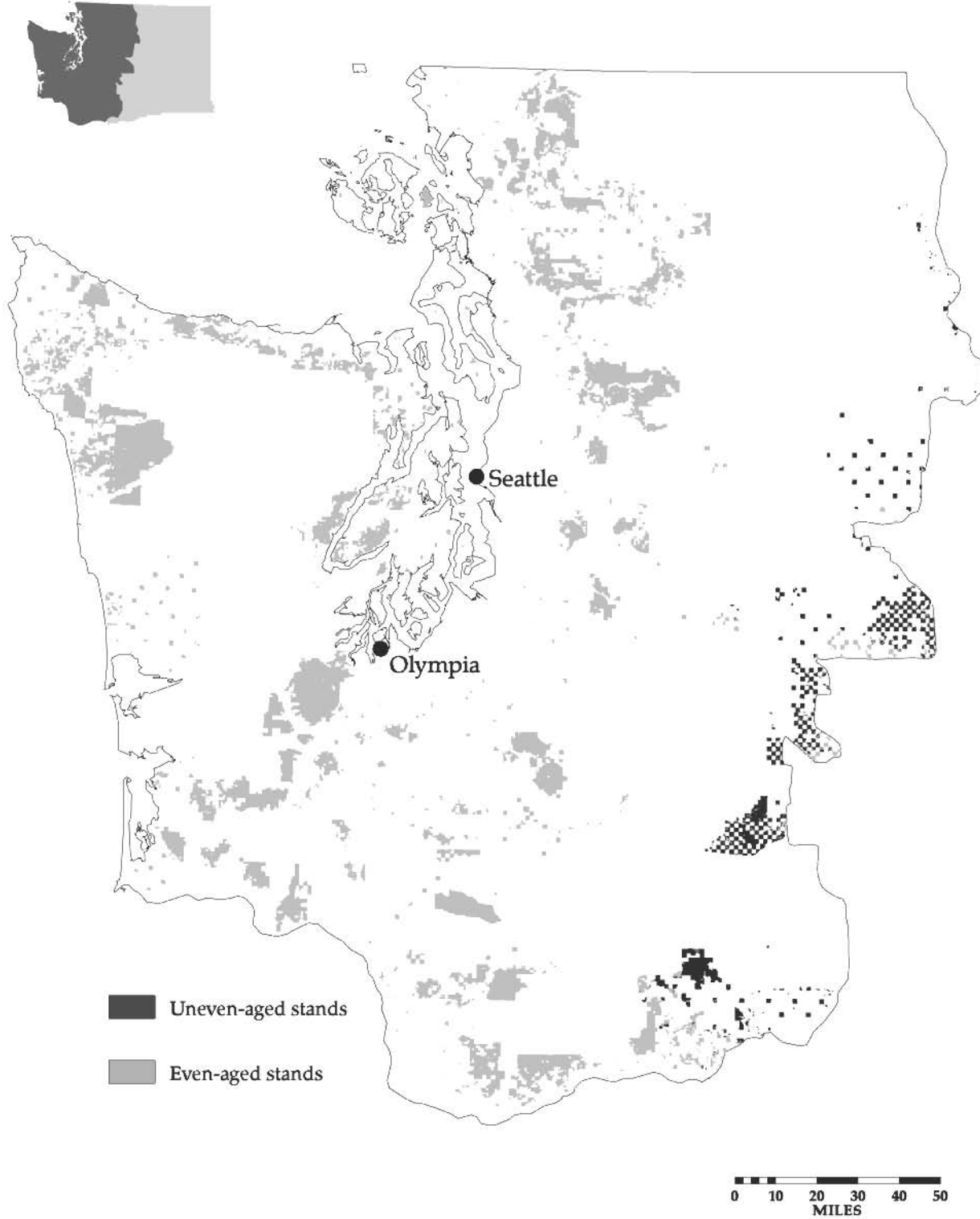


# Map I.1: DNR-managed lands covered by the Habitat Conservation Plan

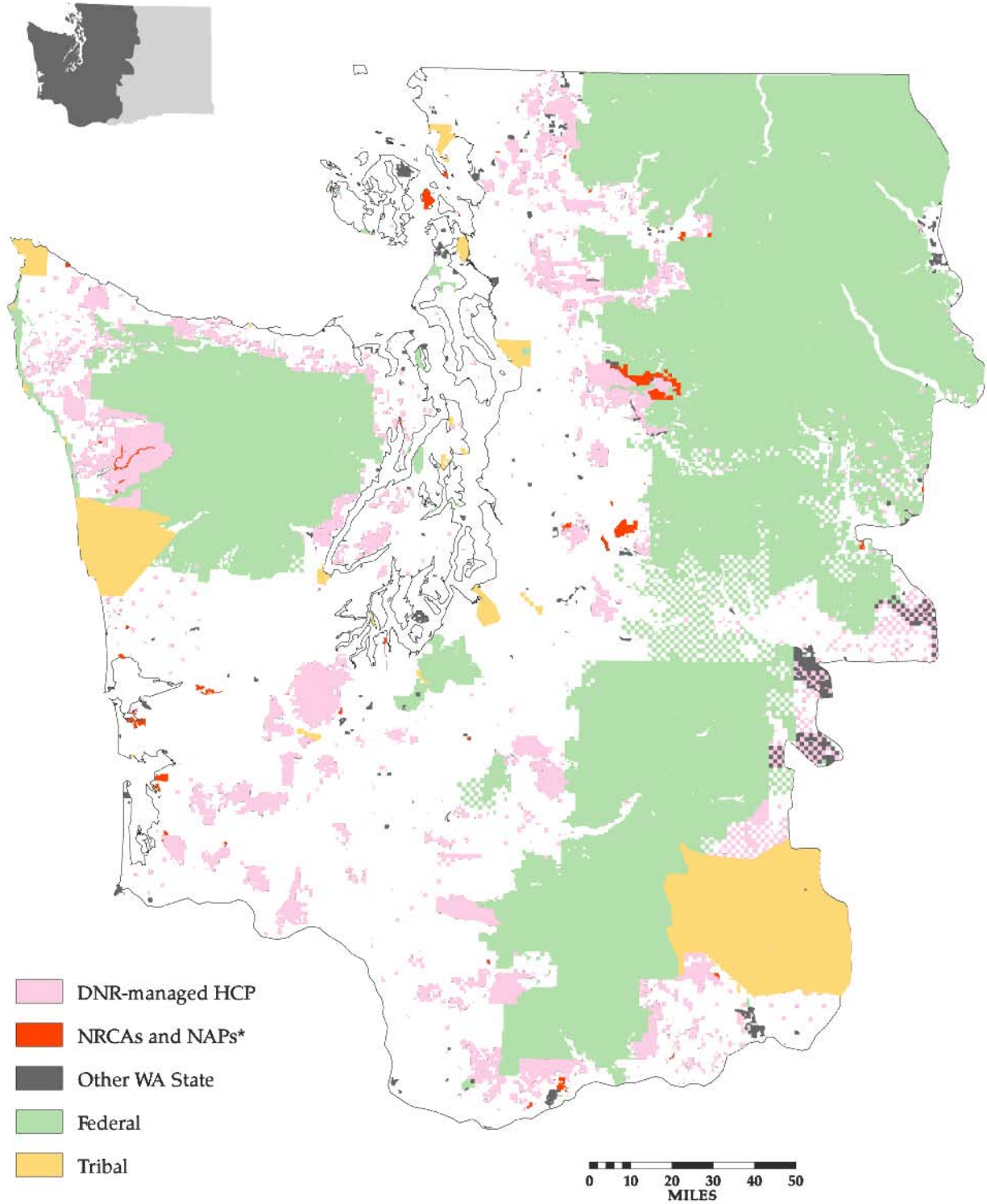


RMS 8/97 (Source: DNR Geographic Information System, January 1997)  
This map is for planning purposes only.  
\*Natural Resources Conservation Areas and Natural Area Preserves:  
See section in Chapter I titled Land Covered by the HCP.

# Map I.2: Location of uneven-aged and even-aged stands on DNR-managed lands covered by the HCP

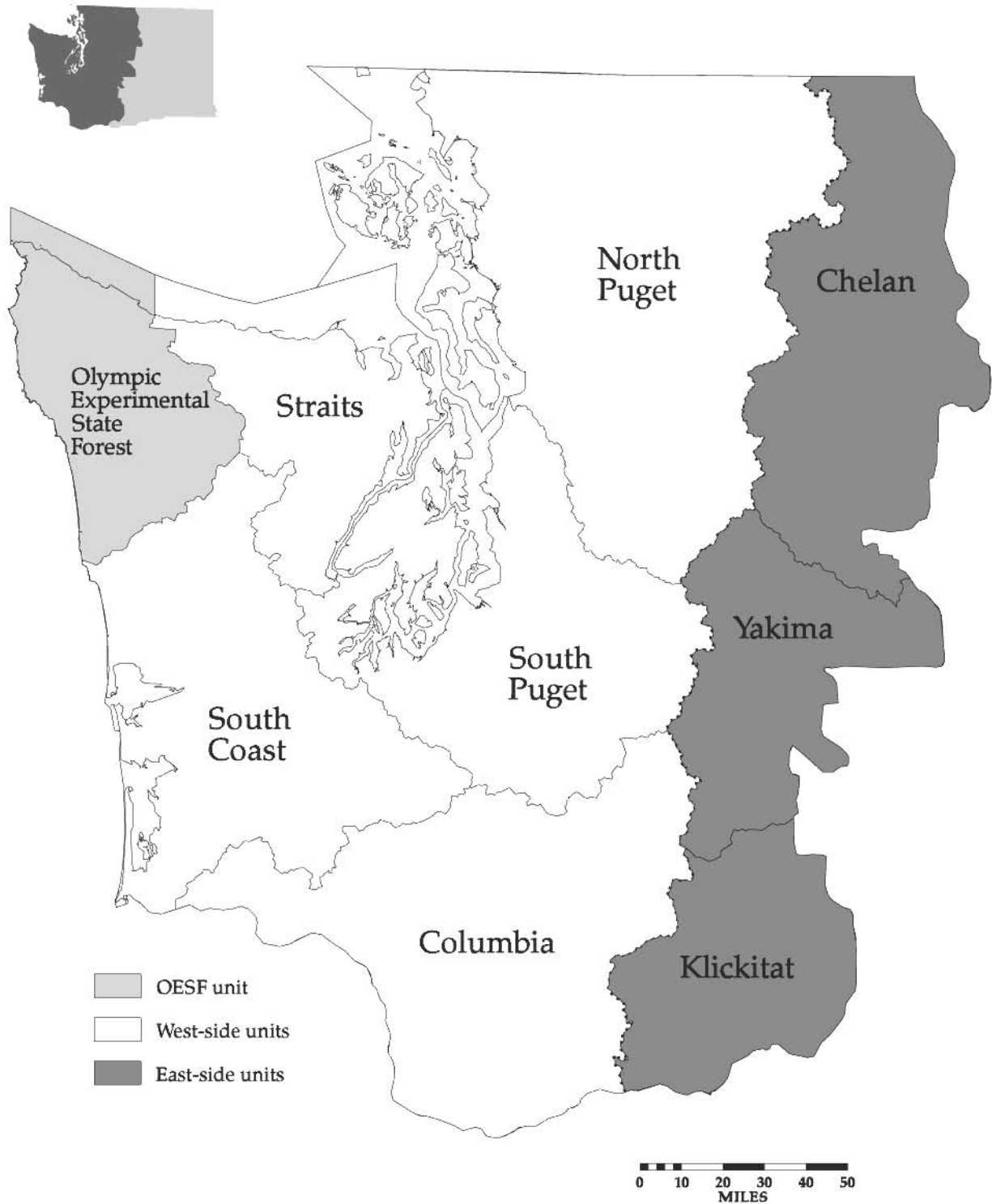


### Map I.3: DNR-managed lands and adjacent ownerships in the area covered by the HCP

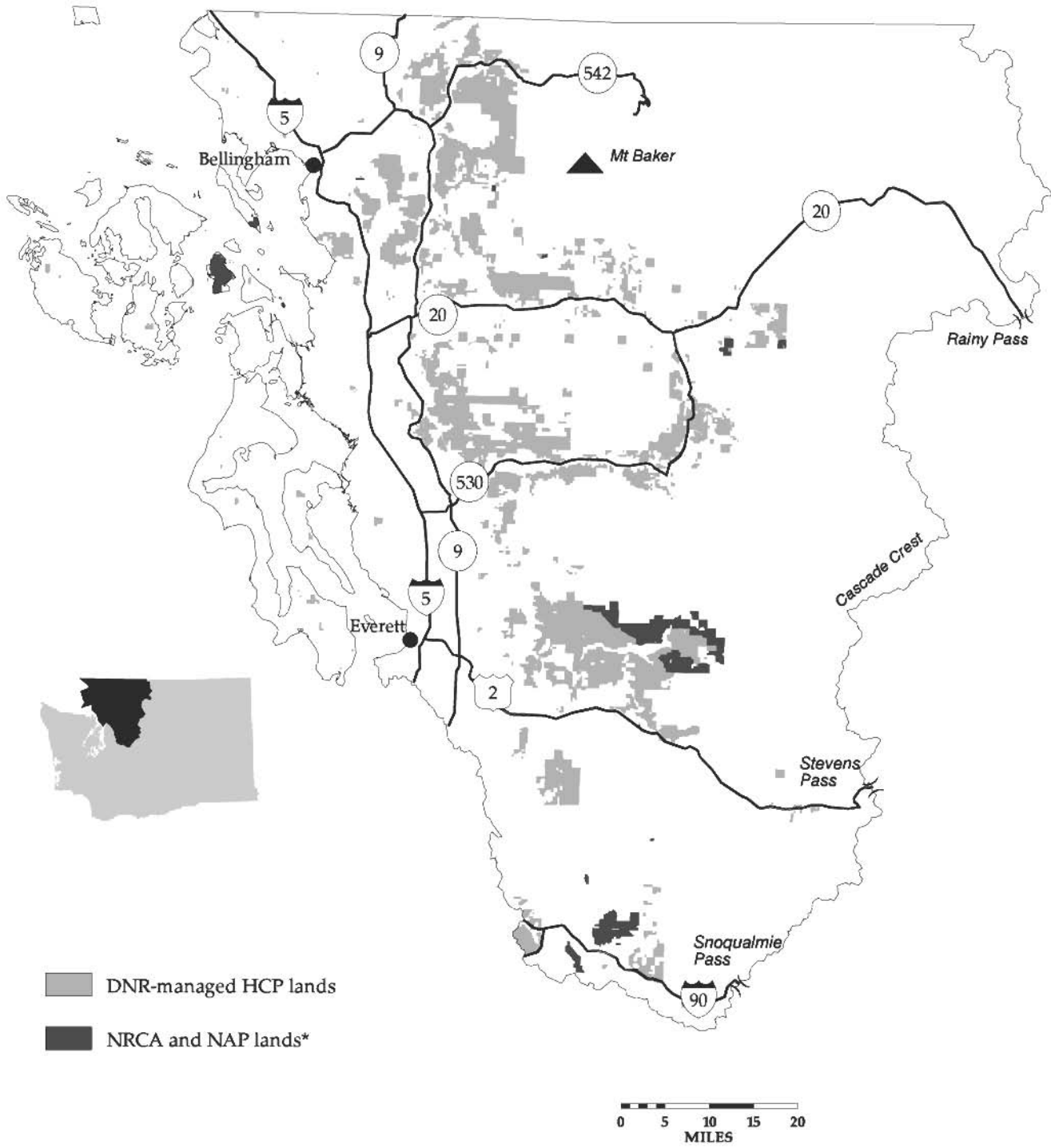


RMS 8/97 (Source: DNR Geographic Information System, January 1997)  
This map is for planning purposes only.  
\*Natural Resources Conservation Areas and Natural Area Preserves:  
See section in Chapter I titled Land Covered by the HCP.

# Map I.4: HCP planning units



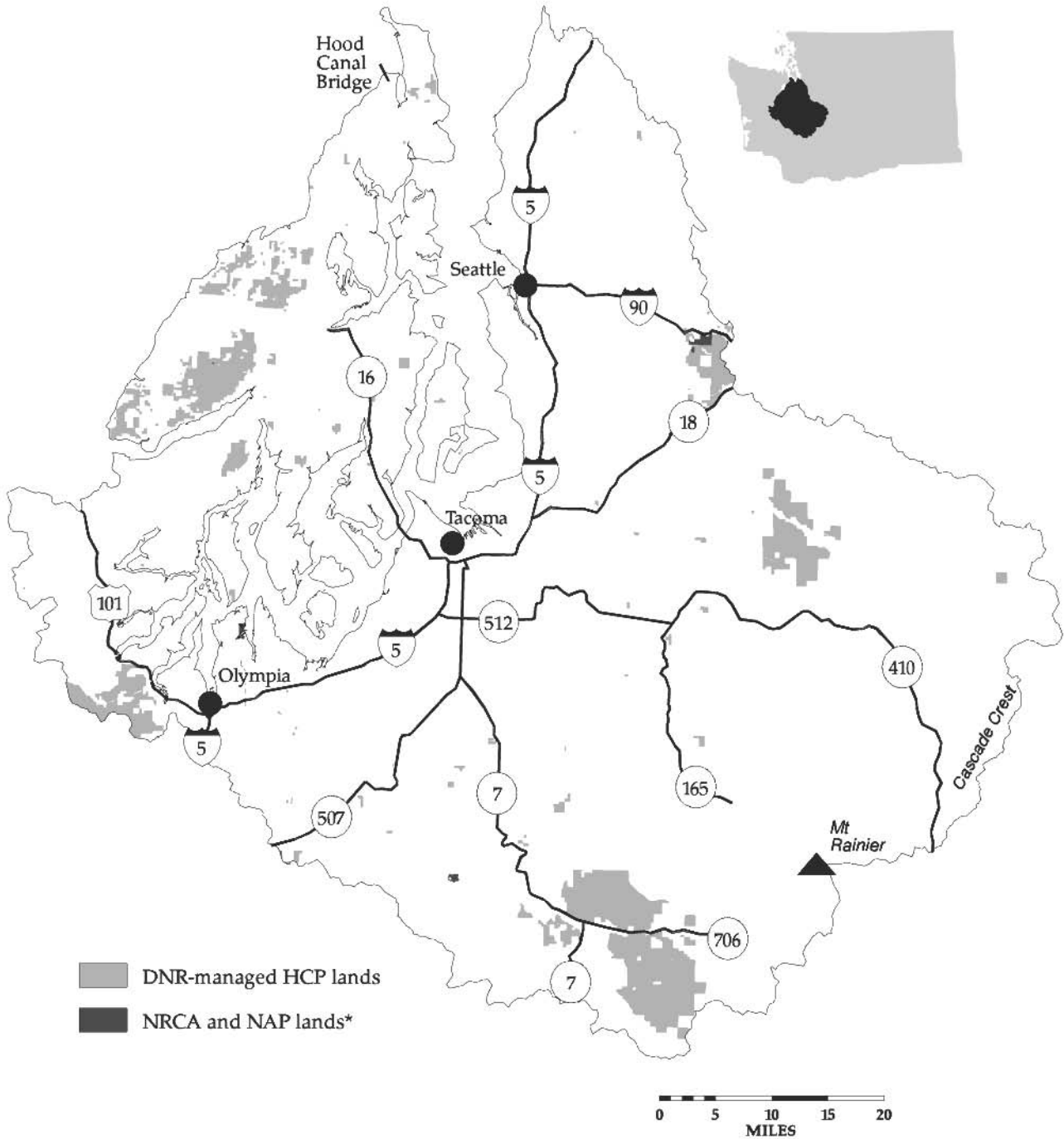
# Map I.5: North Puget Planning Unit



■ DNR-managed HCP lands  
■ NRCA and NAP lands\*

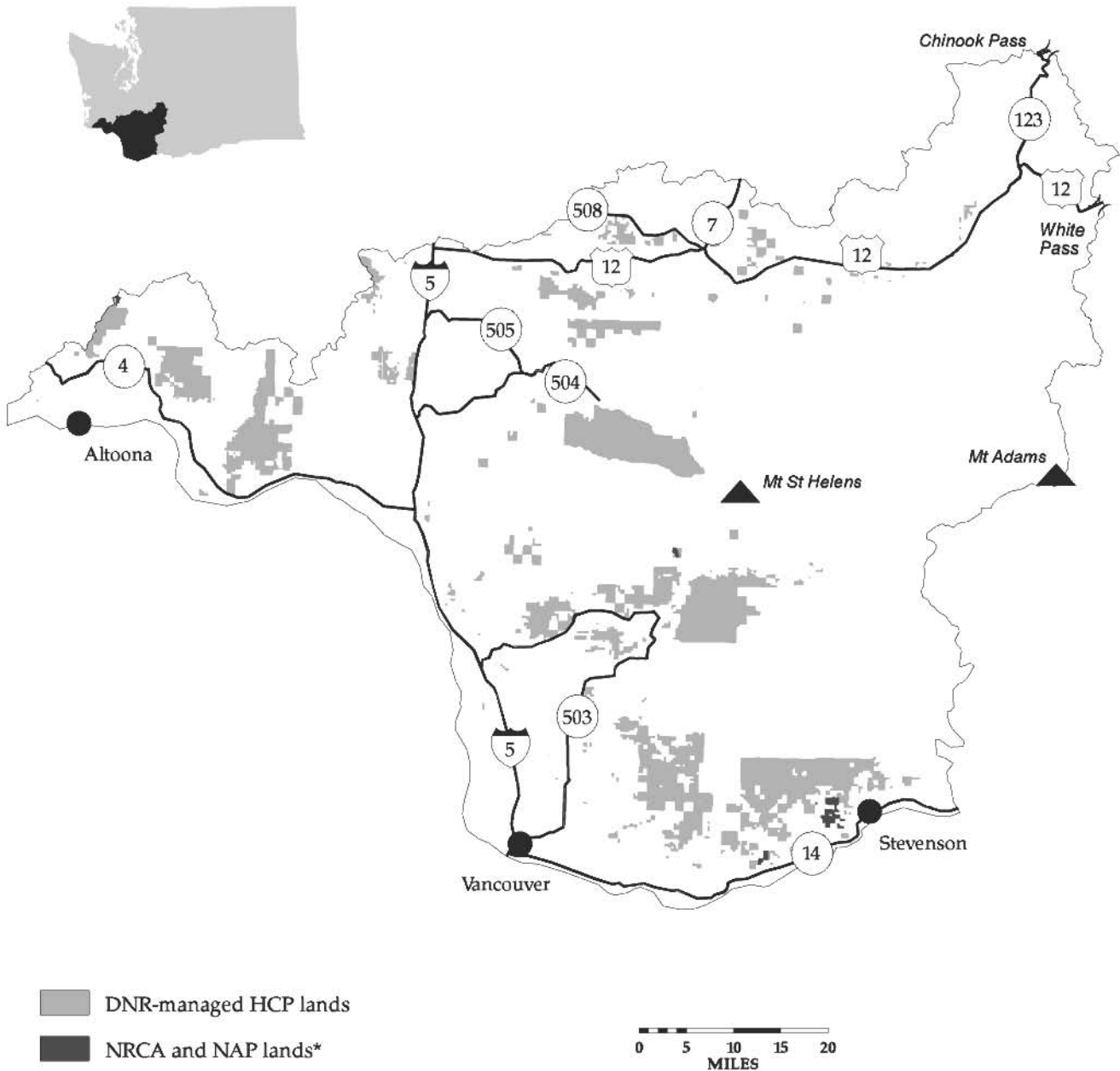
RMS 8/97 (Source: DNR Geographic Information System, January 1997)  
This map is for planning purposes only.  
\*Natural Resources Conservation Areas and Natural Area Preserves:  
See section in Chapter I titled Land Covered by the HCP.

# Map I.6: South Puget Planning Unit



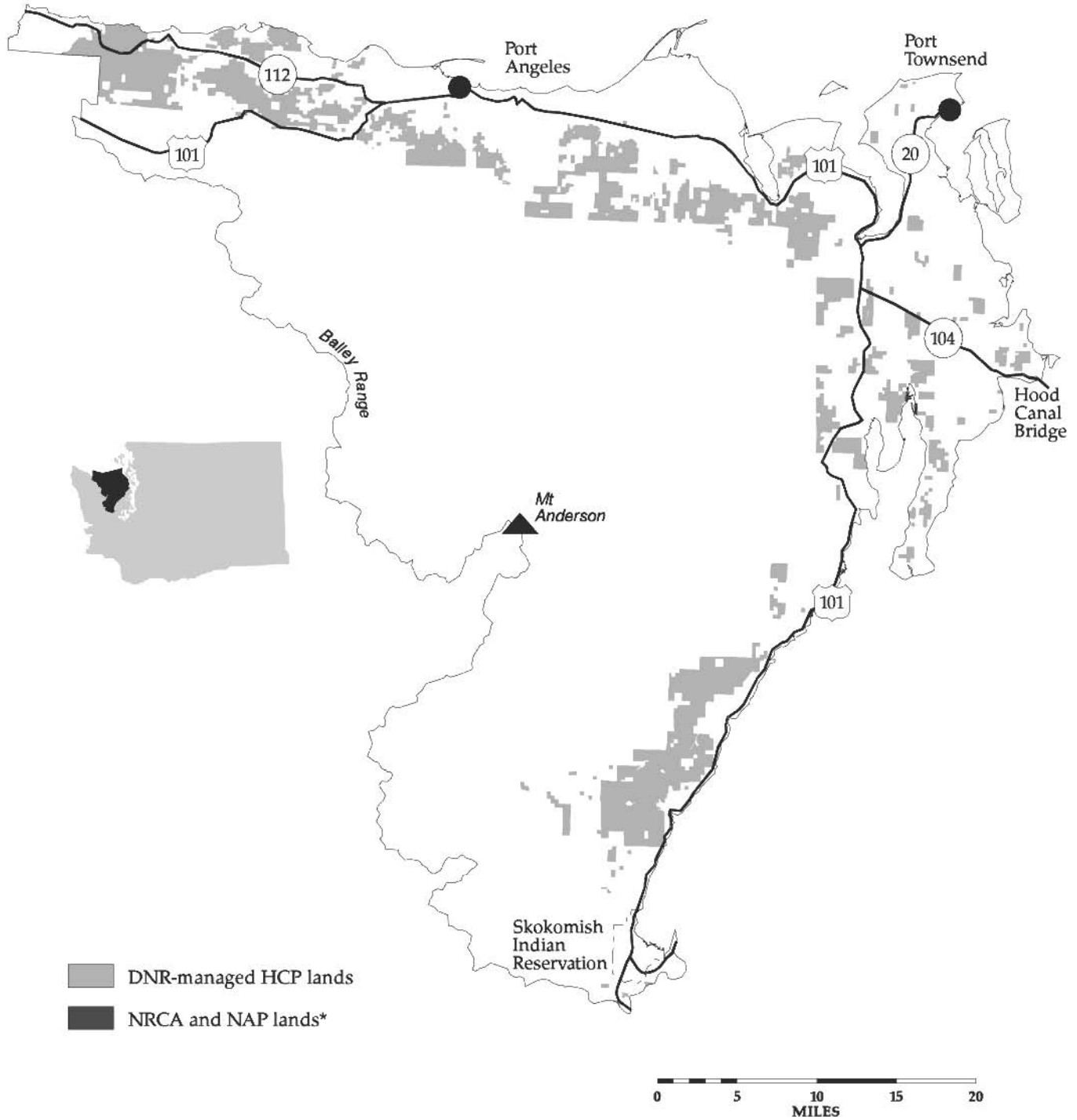
RMS 8/97 (Source: DNR Geographic Information System, January 1997)  
This map is for planning purposes only.  
\*Natural Resources Conservation Areas and Natural Area Preserves:  
See section in Chapter I titled Land Covered by the HCP.

# Map I.7: Columbia Planning Unit



RMS 8/97 (Source: DNR Geographic Information System, January 1997)  
This map is for planning purposes only.  
\*Natural Resources Conservation Areas and Natural Area Preserves:  
See section in Chapter I titled Land Covered by the HCP.

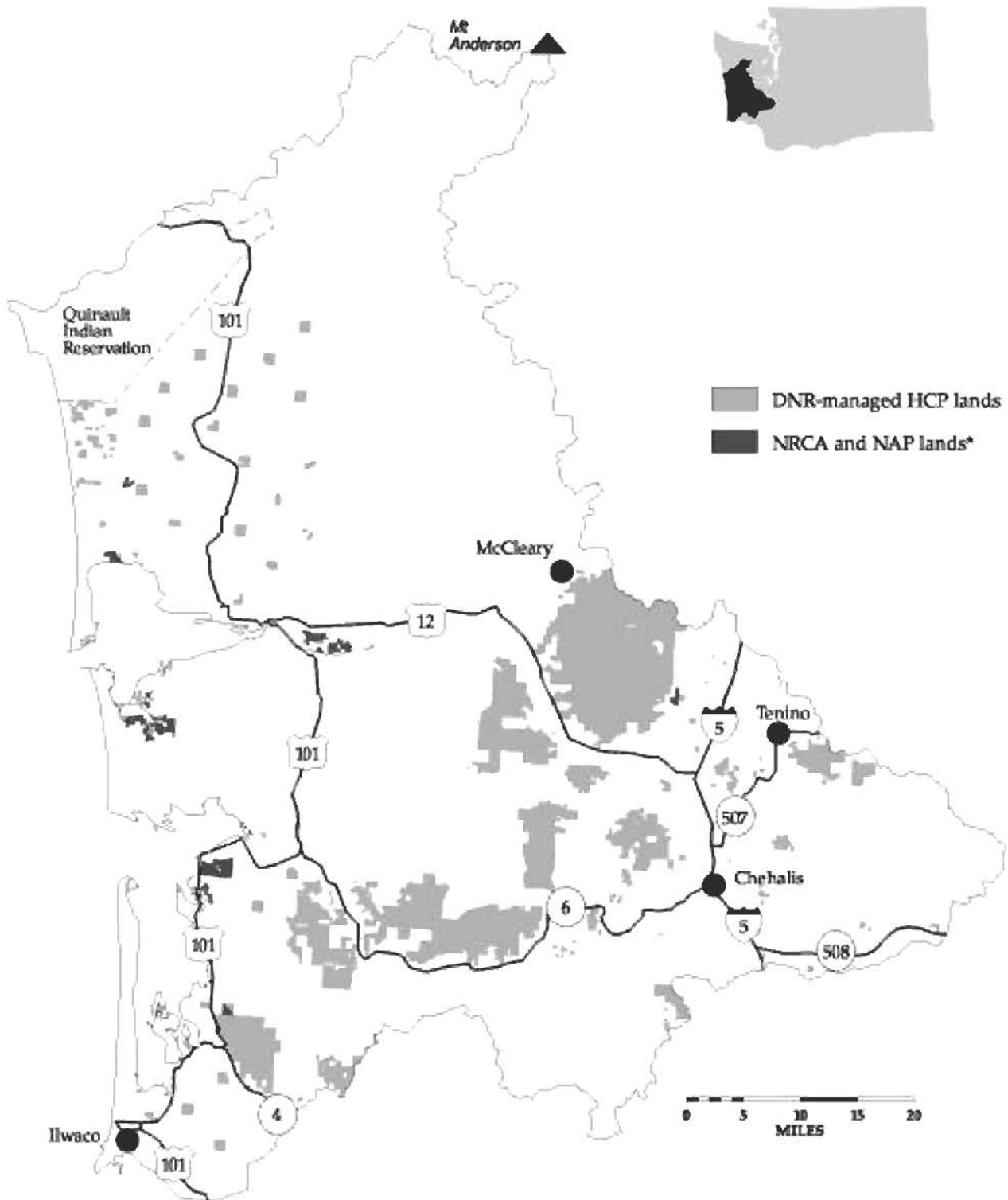
# Map I.8: Straits Planning Unit



RMS 8/97 (Source: DNR Geographic Information System, January 1997)  
This map is for planning purposes only.  
\*Natural Resources Conservation Areas and Natural Area Preserves:  
See section in Chapter I titled Land Covered by the HCP.



# Map I.9: South Coast Planning Unit

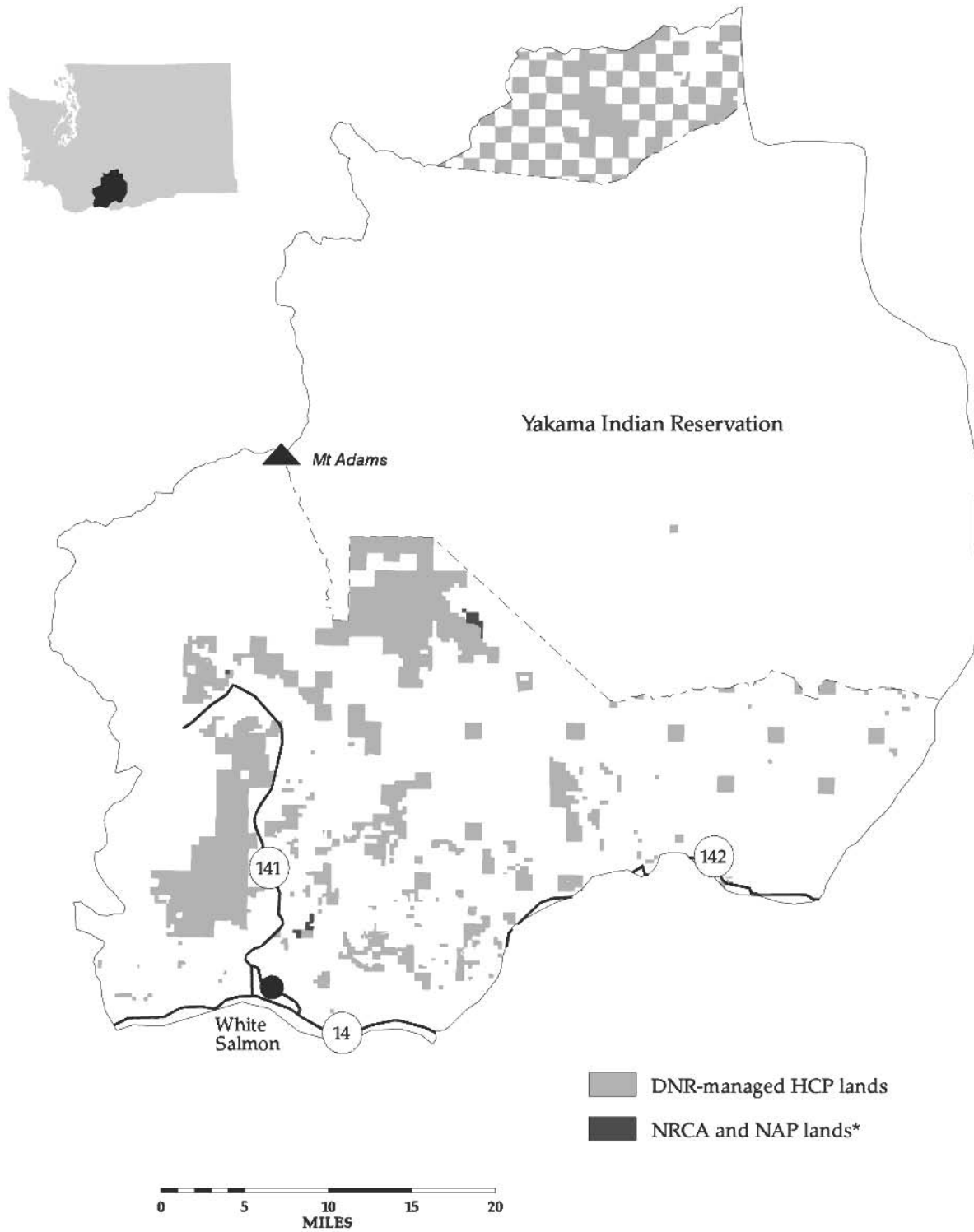


RMS 8/97 (Source: DNR Geographic Information System, January 1997)

This map is for planning purposes only.

\*Natural Resources Conservation Areas and Natural Area Preserves:  
See section in Chapter I titled Land Covered by the HCP.

# Map I.10: Klickitat Planning Unit

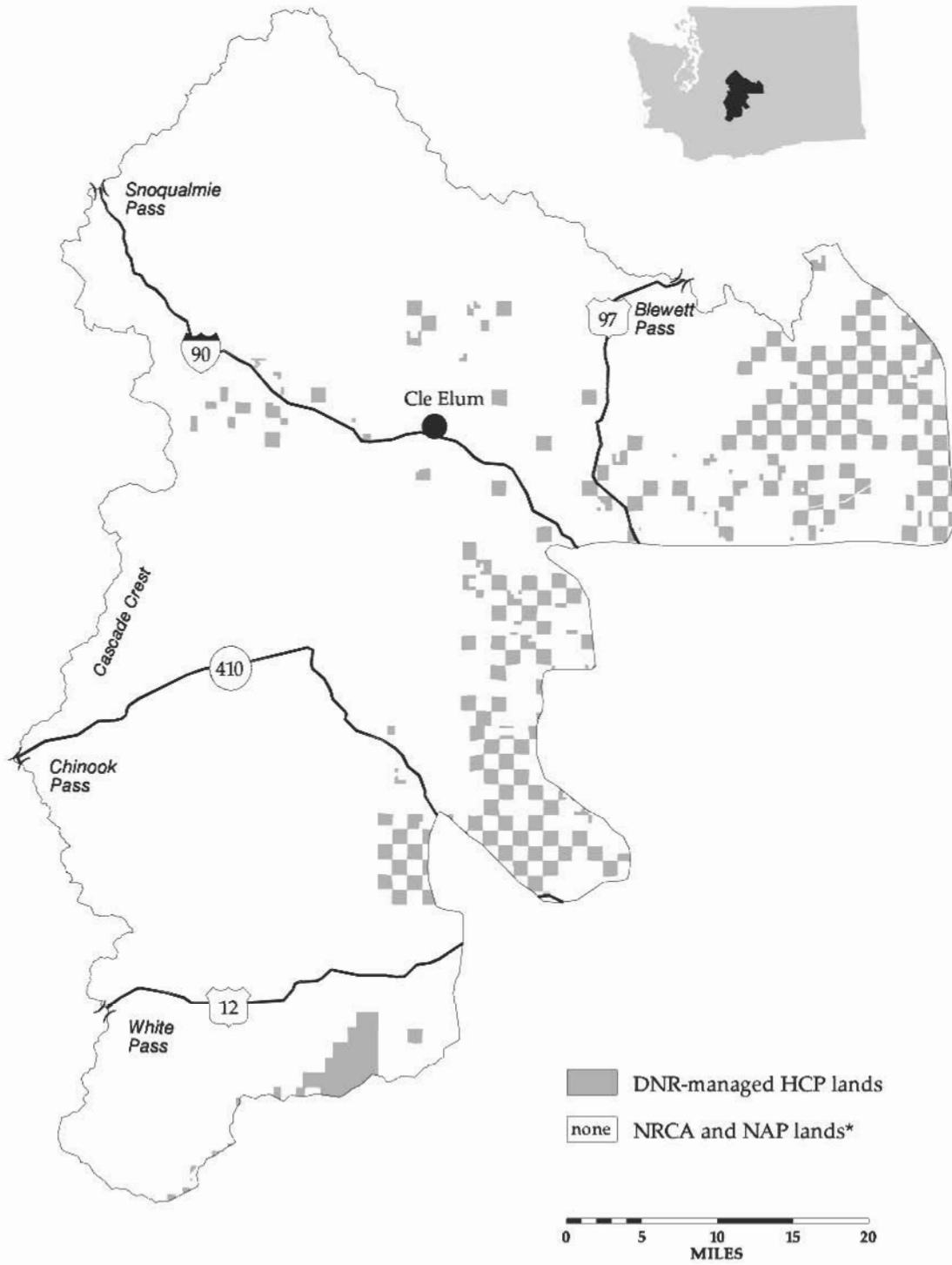


RMS 8/97 (Source: DNR Geographic Information System, January 1997)

This map is for planning purposes only.

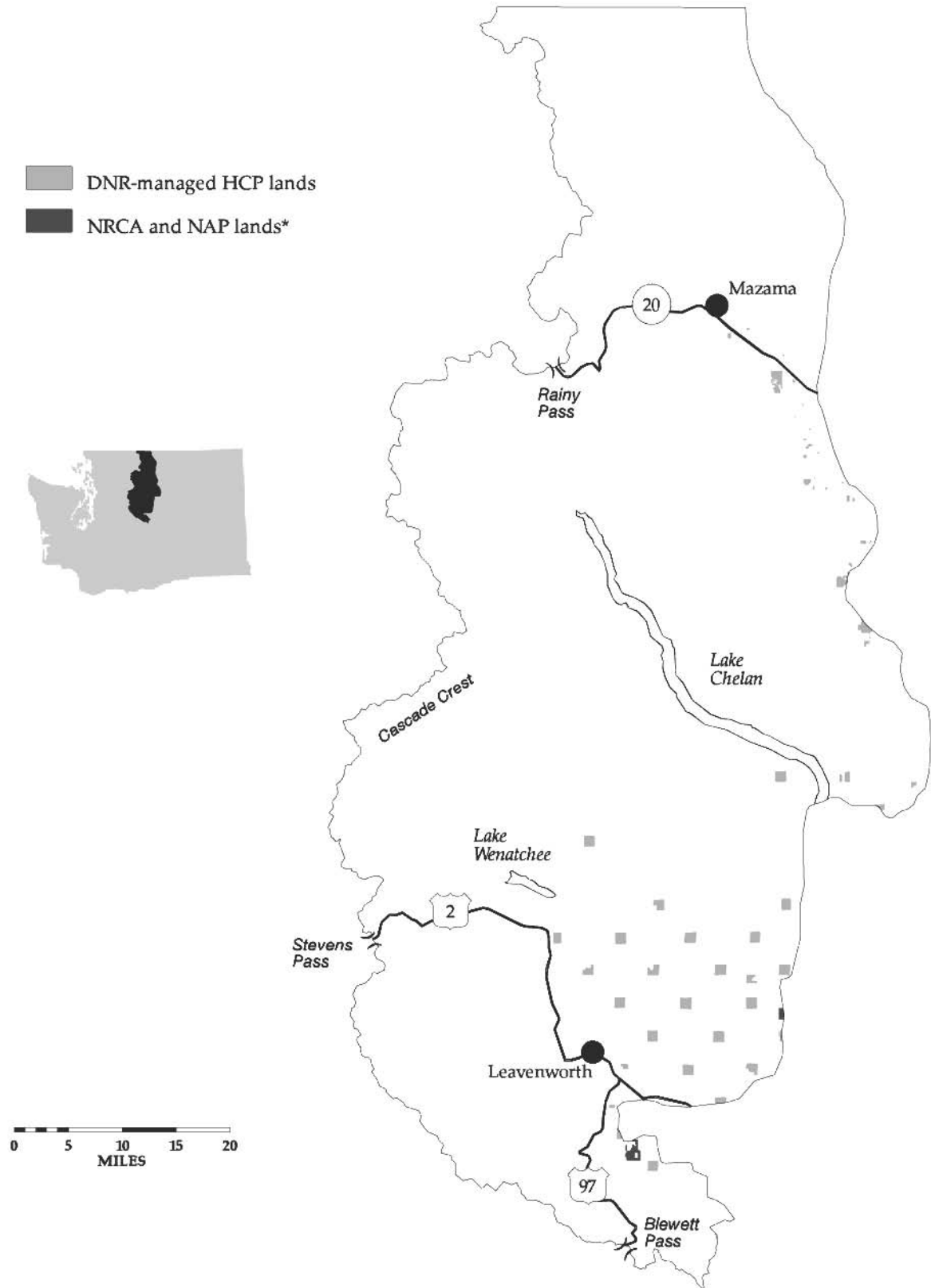
\*Natural Resources Conservation Areas and Natural Area Preserves:  
See section in Chapter I titled Land Covered by the HCP.

# Map I.11: Yakima Planning Unit



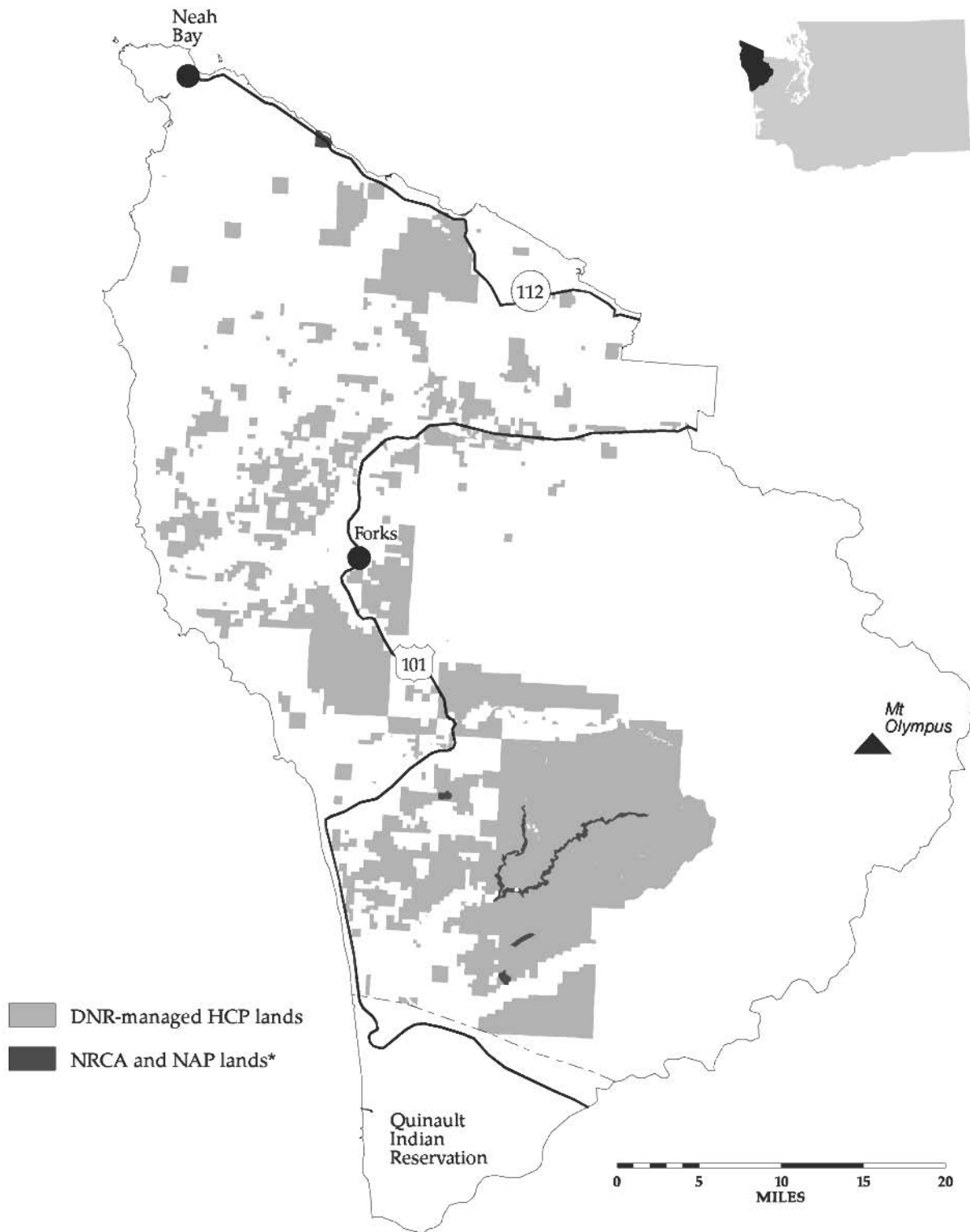
RMS 8/97 (Source: DNR Geographic Information System, January 1997)  
This map is for planning purposes only.  
\*Natural Resources Conservation Areas and Natural Area Preserves:  
See section in Chapter I titled Land Covered by the HCP.

# Map I.12: Chelan Planning Unit



RMS 8/97 (Source: DNR Geographic Information System, January 1997)  
This map is for planning purposes only.  
\*Natural Resources Conservation Areas and Natural Area Preserves:  
See section in Chapter I titled Land Covered by the HCP.

# Map I.13: The Olympic Experimental State Forest Planning Unit

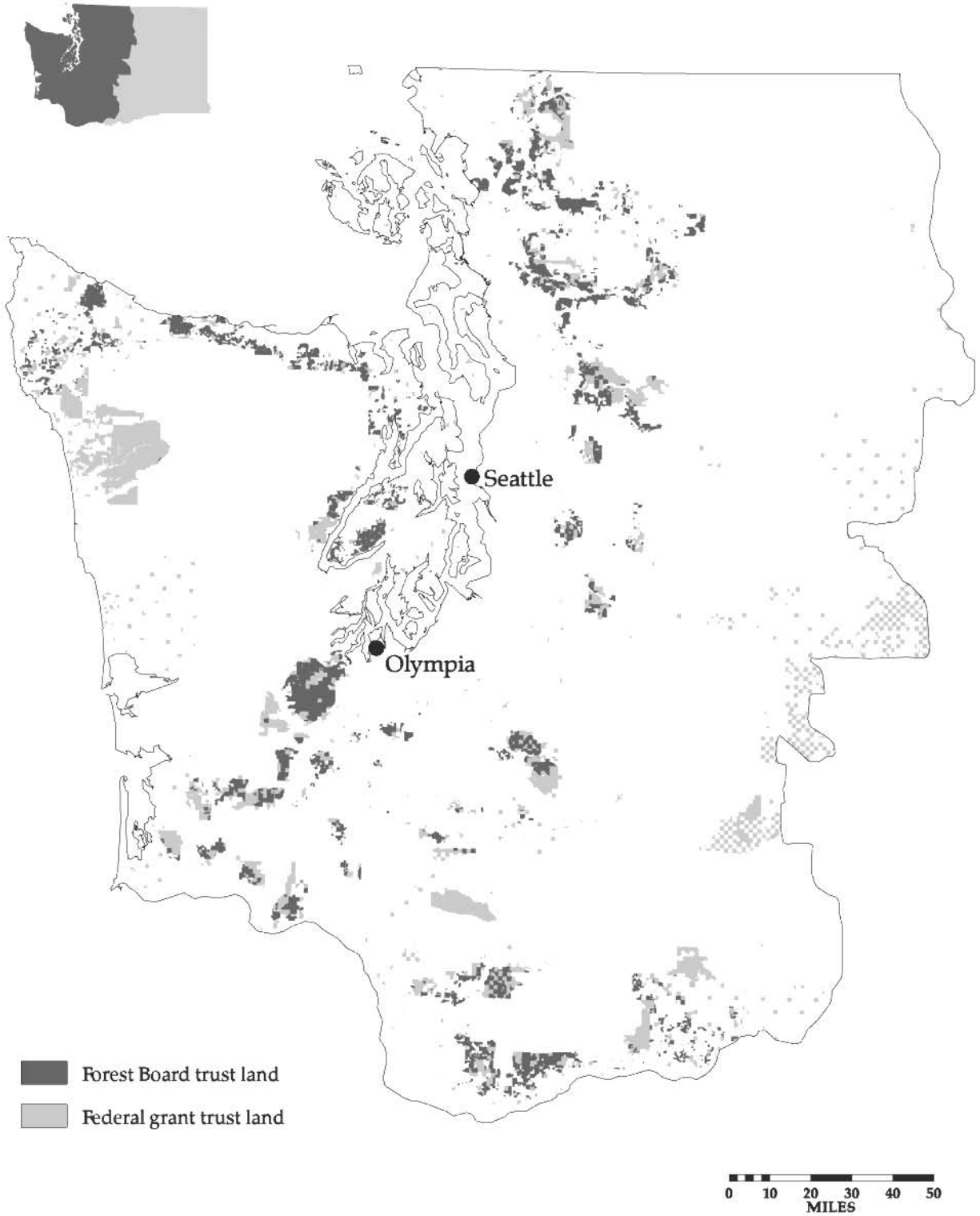


RMS 8/97 (Source: DNR Geographic Information System, January 1997)

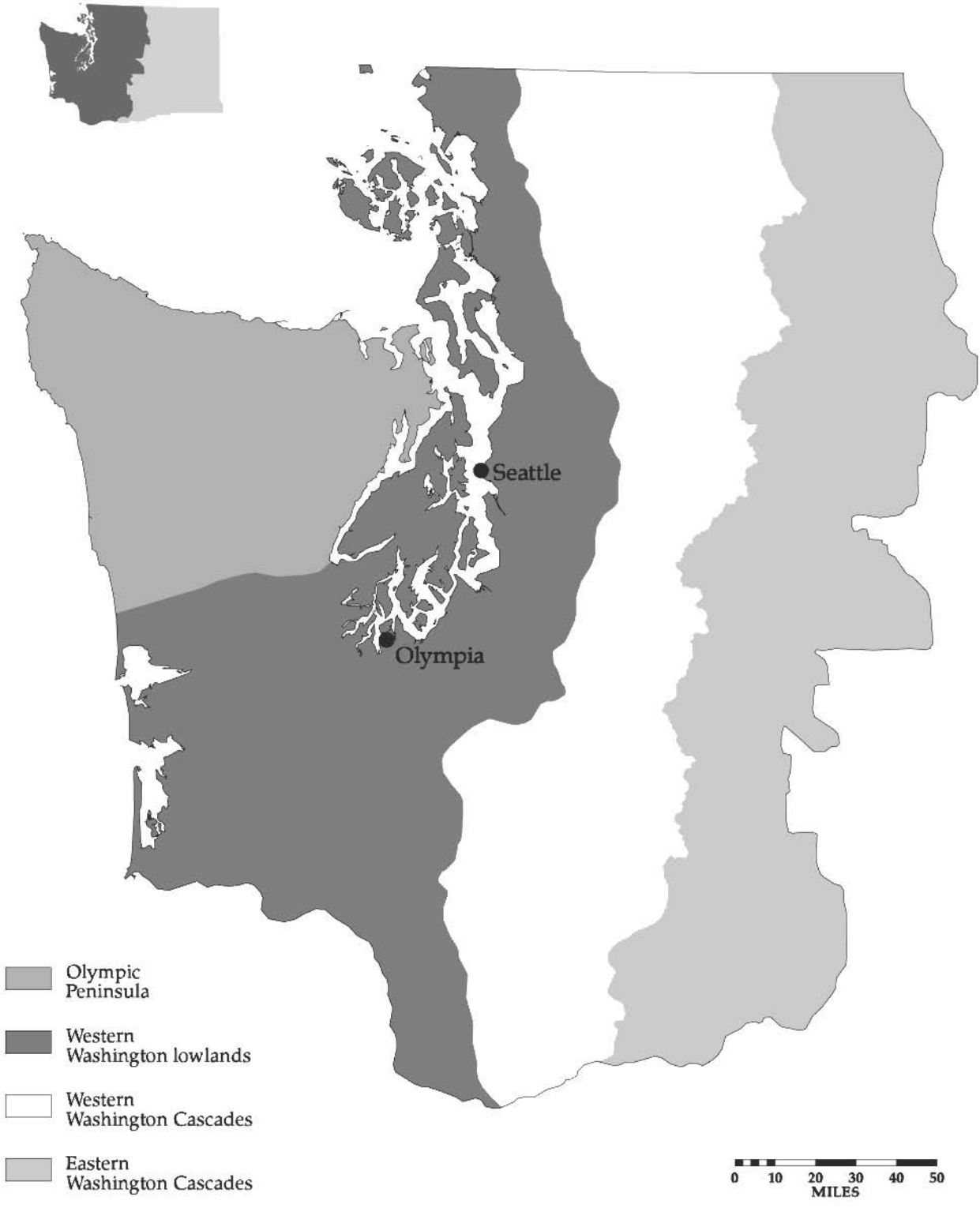
This map is for planning purposes only.

\*Natural Resources Conservation Areas and Natural Area Preserves:  
See section in Chapter I titled Land Covered by the HCP.

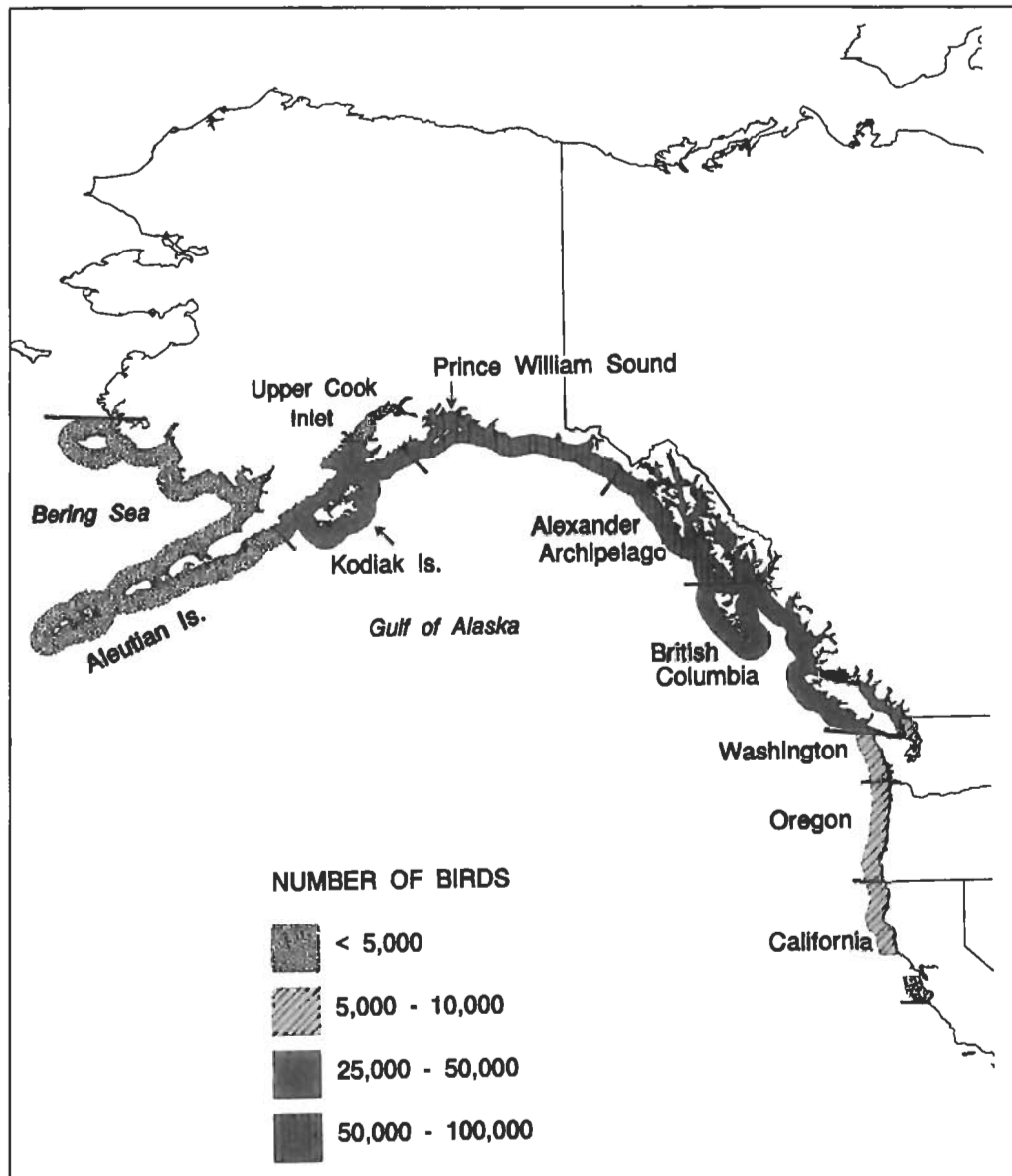
## Map II.1: DNR-managed trust lands in the area covered by the HCP



# Map III.1: Physiographic provinces of the northern spotted owl

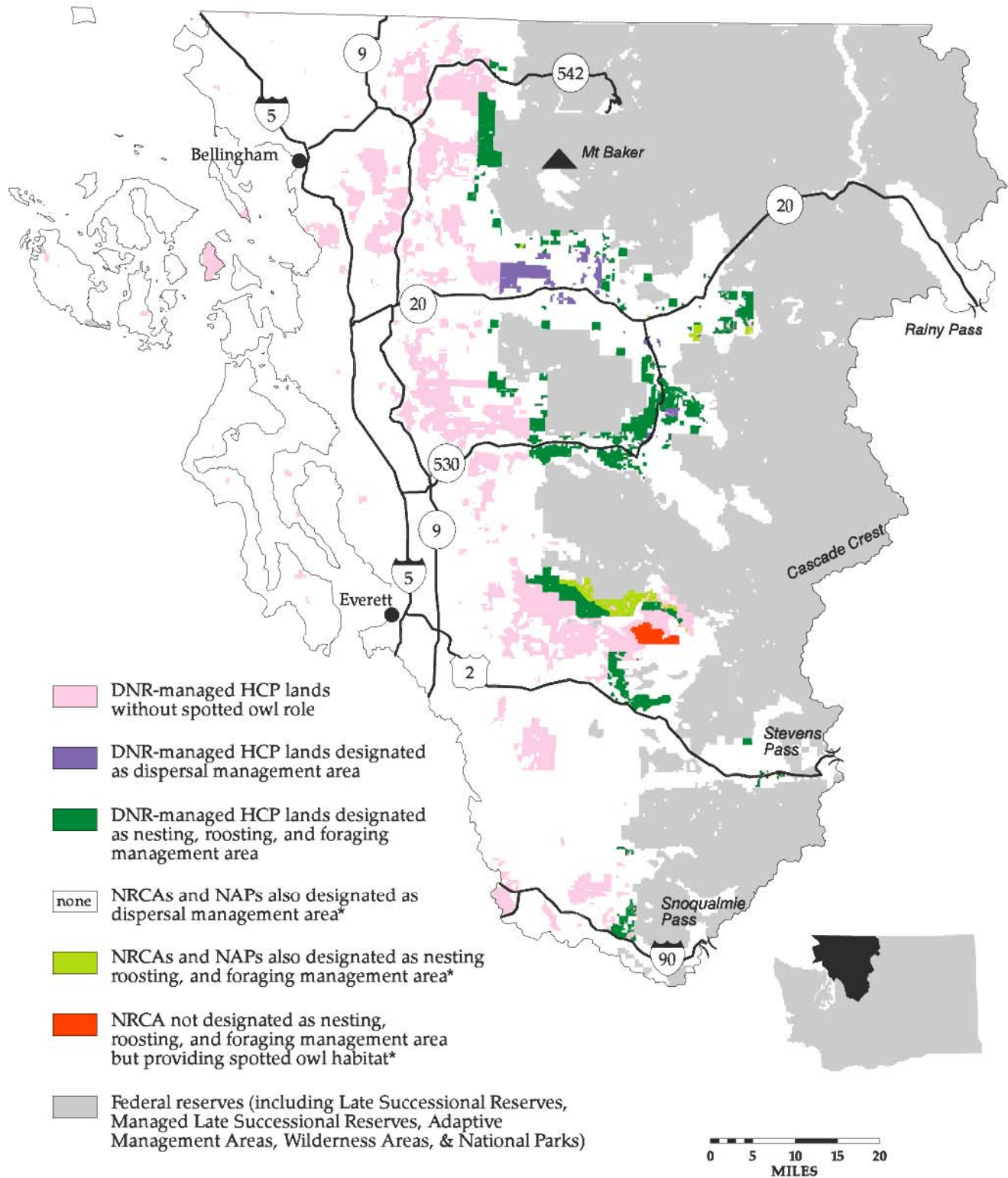


## Map III.2: Range of the marbled murrelet and population sizes along the Pacific coast



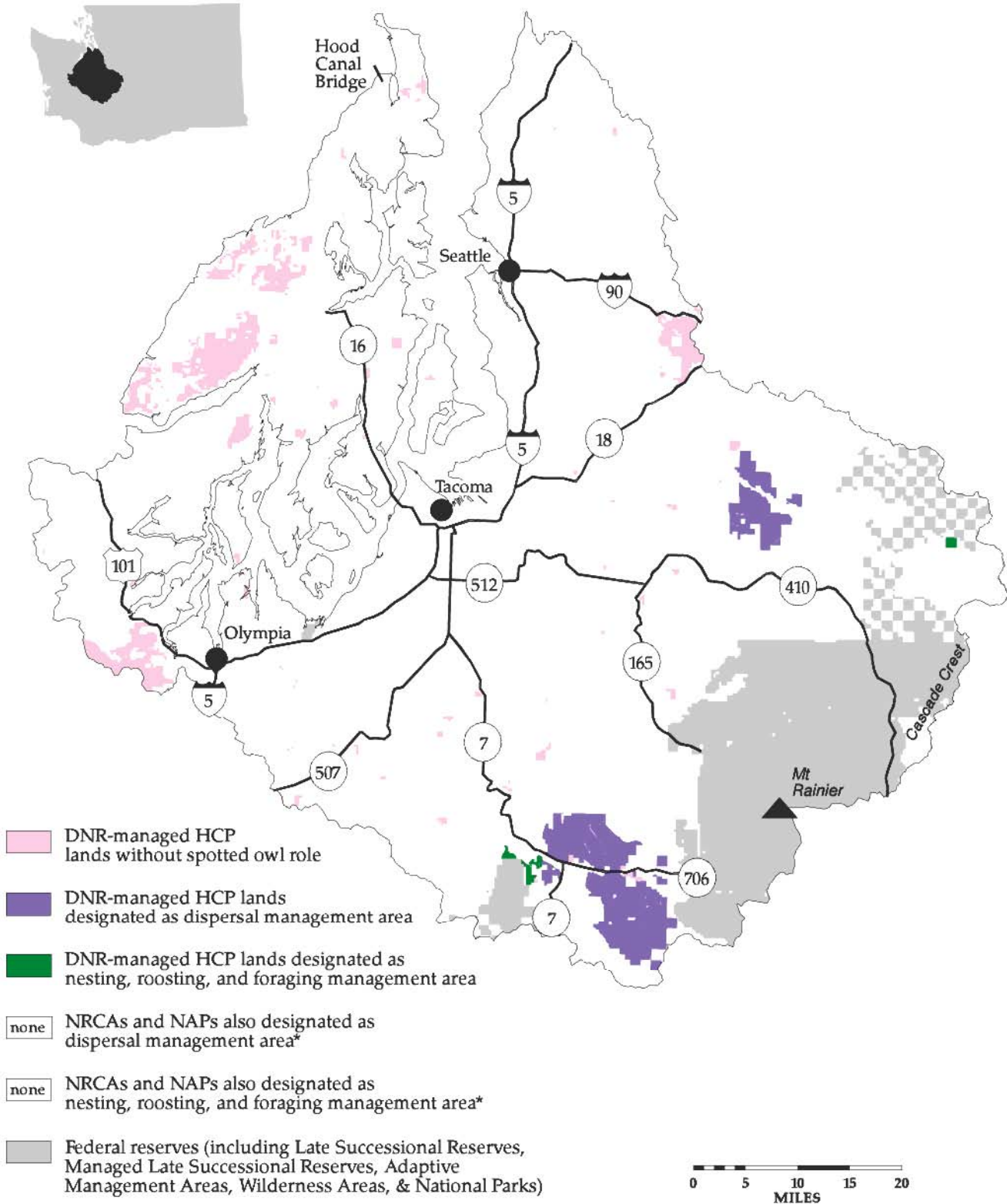


# Map IV.1: Role of DNR-managed lands in providing mitigation for the northern spotted owl in the North Puget Planning Unit



RMS 8/97 (Source: DNR Geographic Information System, January 1997)  
 This map is for planning purposes only.  
 \*Natural Resources Conservation Areas and Natural Area Preserves:  
 See section in Chapter I titled Land Covered by the HCP.

## Map IV.2: Role of DNR-managed lands in providing mitigation for the northern spotted owl in the South Puget Planning Unit

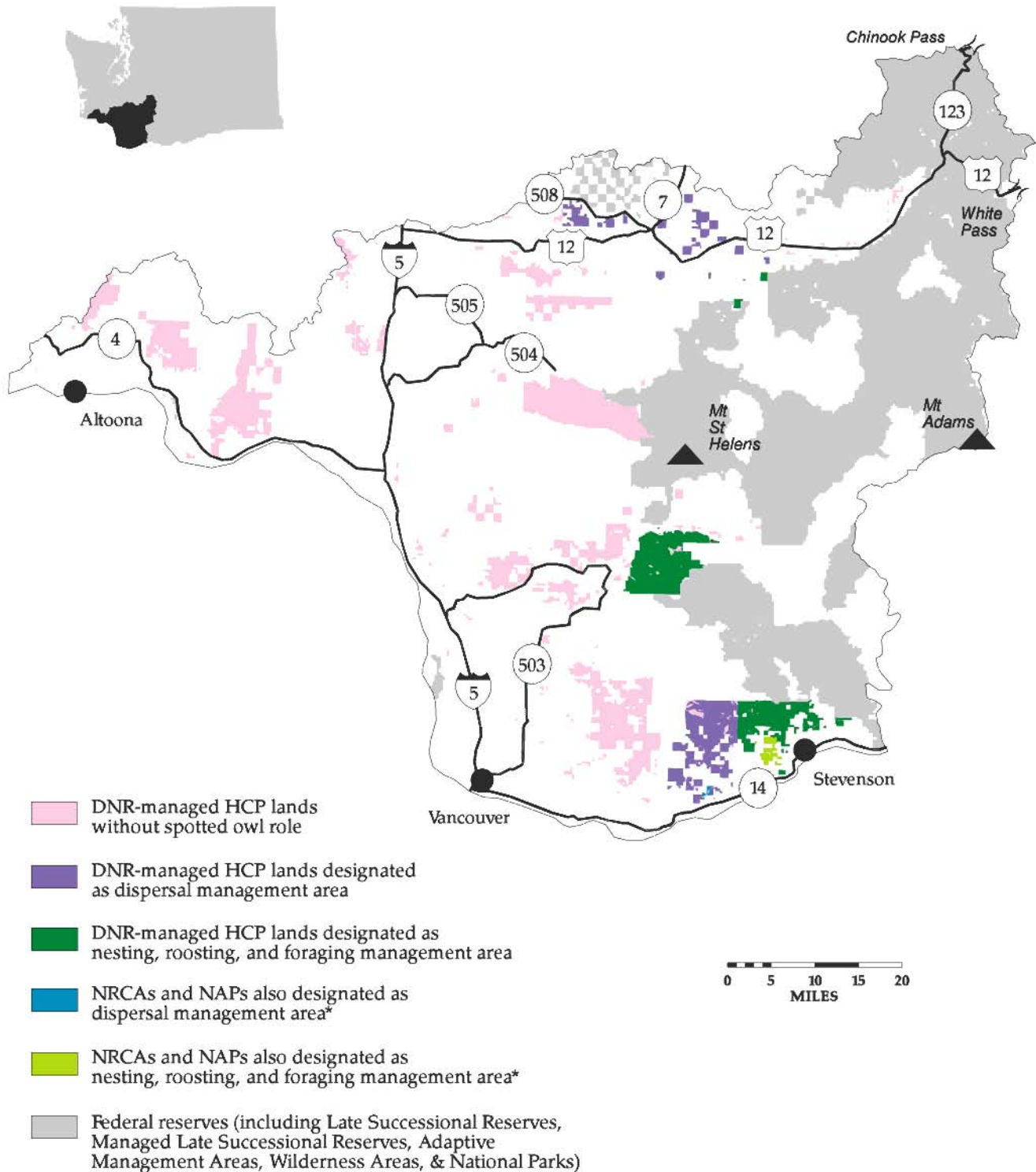


RMS 8/97 (Source: DNR Geographic Information System, January 1997)

This map is for planning purposes only.

\*Natural Resources Conservation Areas and Natural Area Preserves:  
See section in Chapter I titled Land Covered by the HCP.

## Map IV.3: Role of DNR-managed lands in providing mitigation for the northern spotted owl in the Columbia Planning Unit



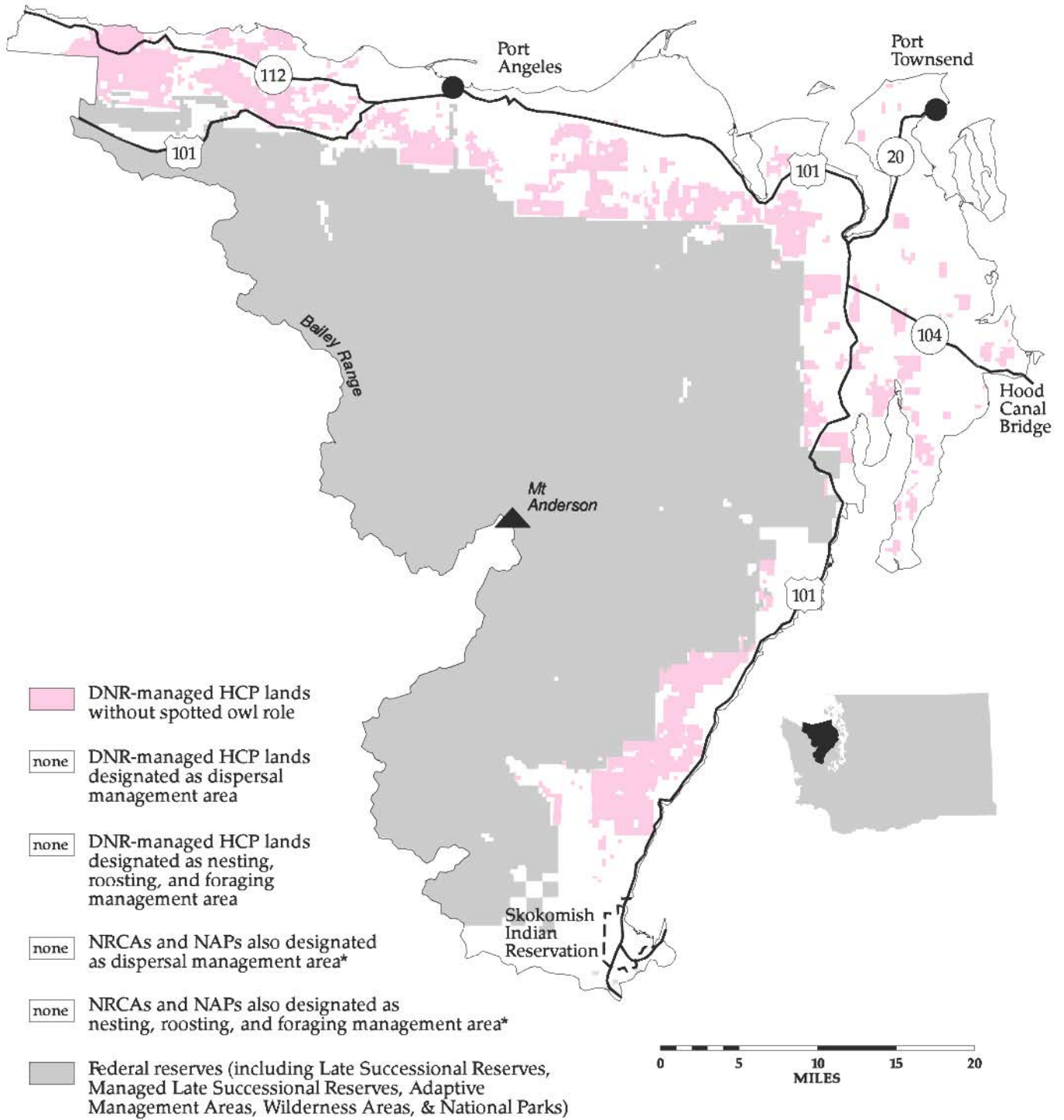
RMS 8/97 (Source: DNR Geographic Information System, January 1997)

This map is for planning purposes only.

\*Natural Resources Conservation Areas and Natural Area Preserves:  
See section in Chapter I titled Land Covered by the HCP.



## Map IV.4: Role of DNR-managed lands in providing mitigation for the northern spotted owl in the Straits Planning Unit

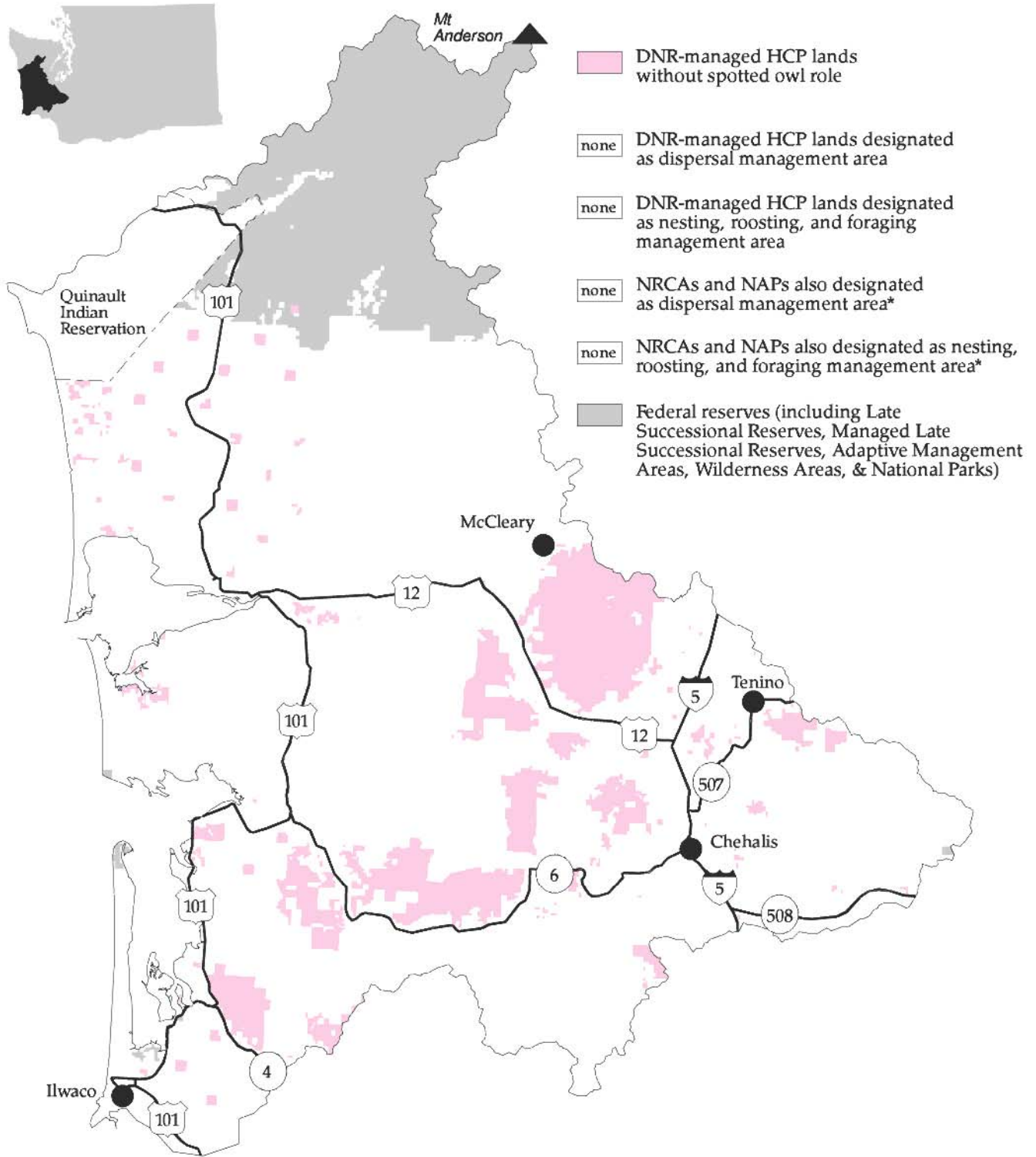


RMS 8/97 (Source: DNR Geographic Information System, January 1997)

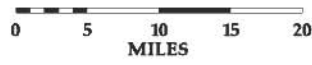
This map is for planning purposes only.

\*Natural Resources Conservation Areas and Natural Area Preserves:  
See section in Chapter I titled Land Covered by the HCP.

# Map IV.5: Role of DNR-managed lands in providing mitigation for the northern spotted owl in the South Coast Planning Unit

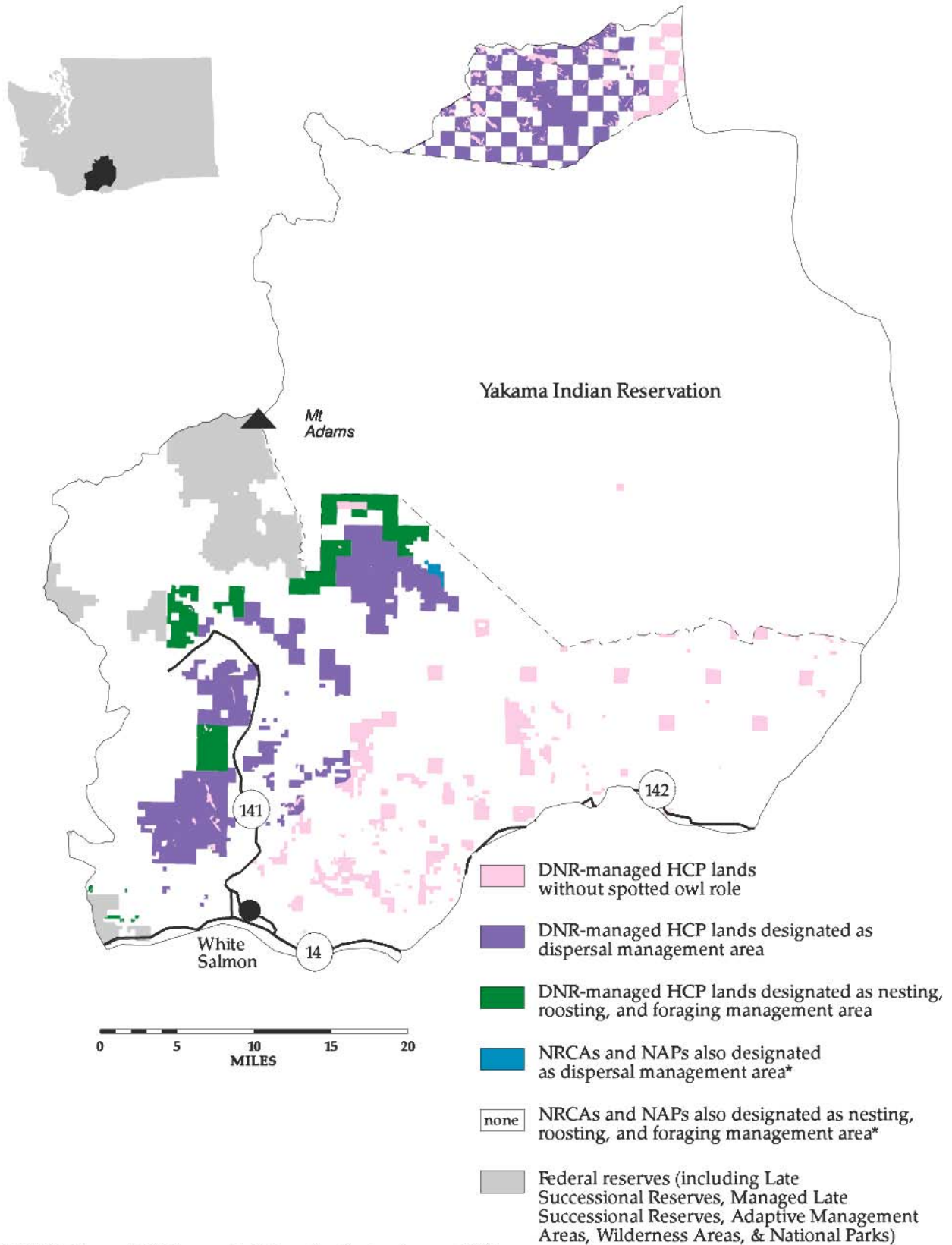


- DNR-managed HCP lands without spotted owl role
- none DNR-managed HCP lands designated as dispersal management area
- none DNR-managed HCP lands designated as nesting, roosting, and foraging management area
- none NRCAs and NAPs also designated as dispersal management area\*
- none NRCAs and NAPs also designated as nesting, roosting, and foraging management area\*
- Federal reserves (including Late Successional Reserves, Managed Late Successional Reserves, Adaptive Management Areas, Wilderness Areas, & National Parks)



RMS 8/97 (Source: DNR Geographic Information System, January 1997)  
 This map is for planning purposes only.  
 \*Natural Resources Conservation Areas and Natural Area Preserves:  
 See section in Chapter I titled Land Covered by the HCP.

## Map IV.6: Role of DNR-managed lands in providing mitigation for the northern spotted owl in the Klickitat Planning Unit

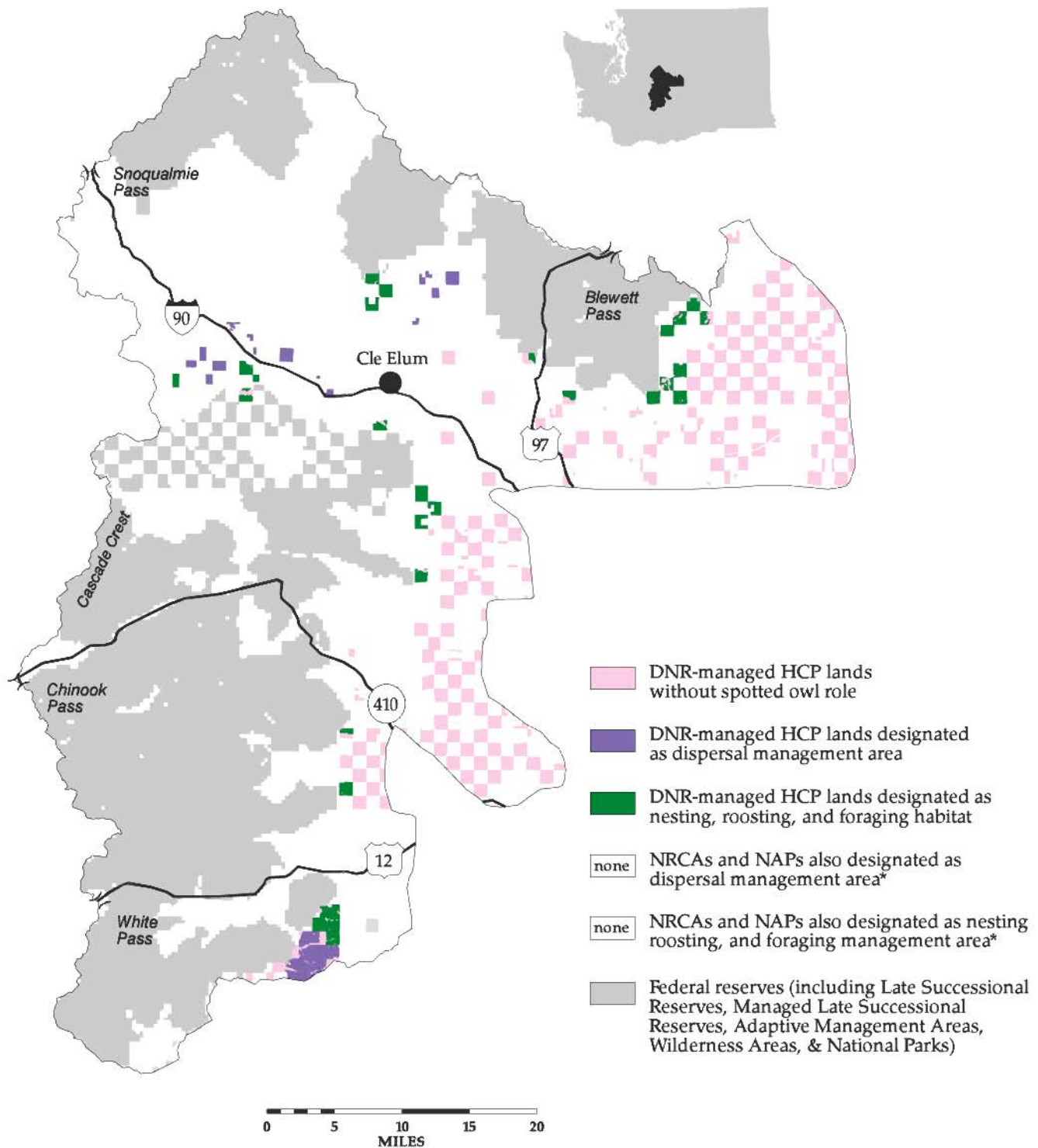


RMS 8/97 (Source: DNR Geographic Information System, January 1997)

This map is for planning purposes only.

\*Natural Resources Conservation Areas and Natural Area Preserves:  
See section in Chapter I titled Land Covered by the HCP.

## Map IV.7: Role of DNR-managed lands in providing mitigation for the northern spotted owl in the Yakima Planning Unit



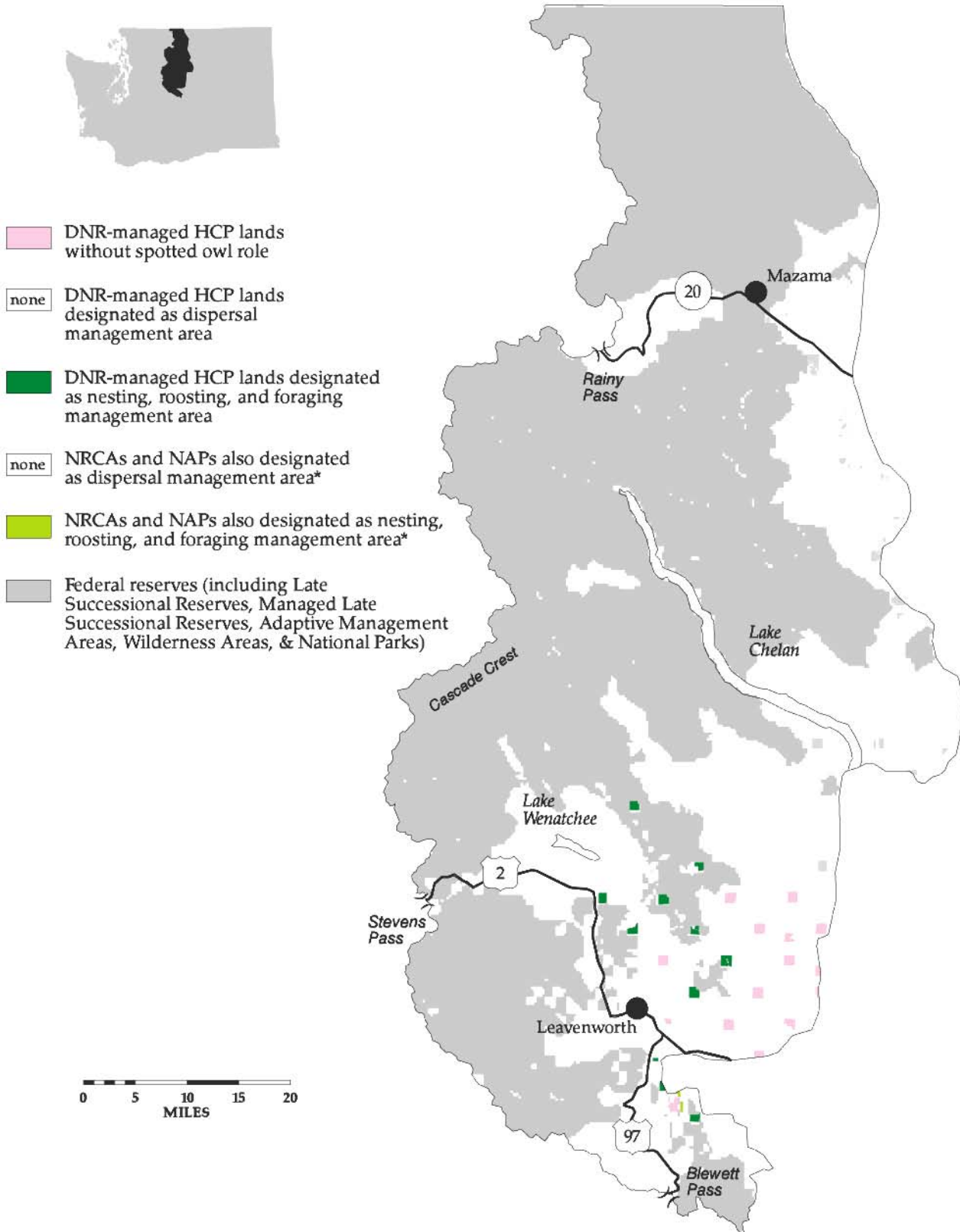
RMS 8/97 (Source: DNR Geographic Information System, January 1997)

This map is for planning purposes only.

\*Natural Resources Conservation Areas and Natural Area Preserves:  
See section in Chapter I titled Land Covered by the HCP.



## Map IV.8: Role of DNR-managed lands in providing mitigation for the northern spotted owl in the Chelan Planning Unit



RMS 8/97 (Source: DNR Geographic Information System, January 1997)

This map is for planning purposes only.

\*Natural Resources Conservation Areas and Natural Area Preserves:  
See section in Chapter I titled Land Covered by the HCP.



# Map IV.9: Landscape planning units in the Olympic Experimental State Forest

