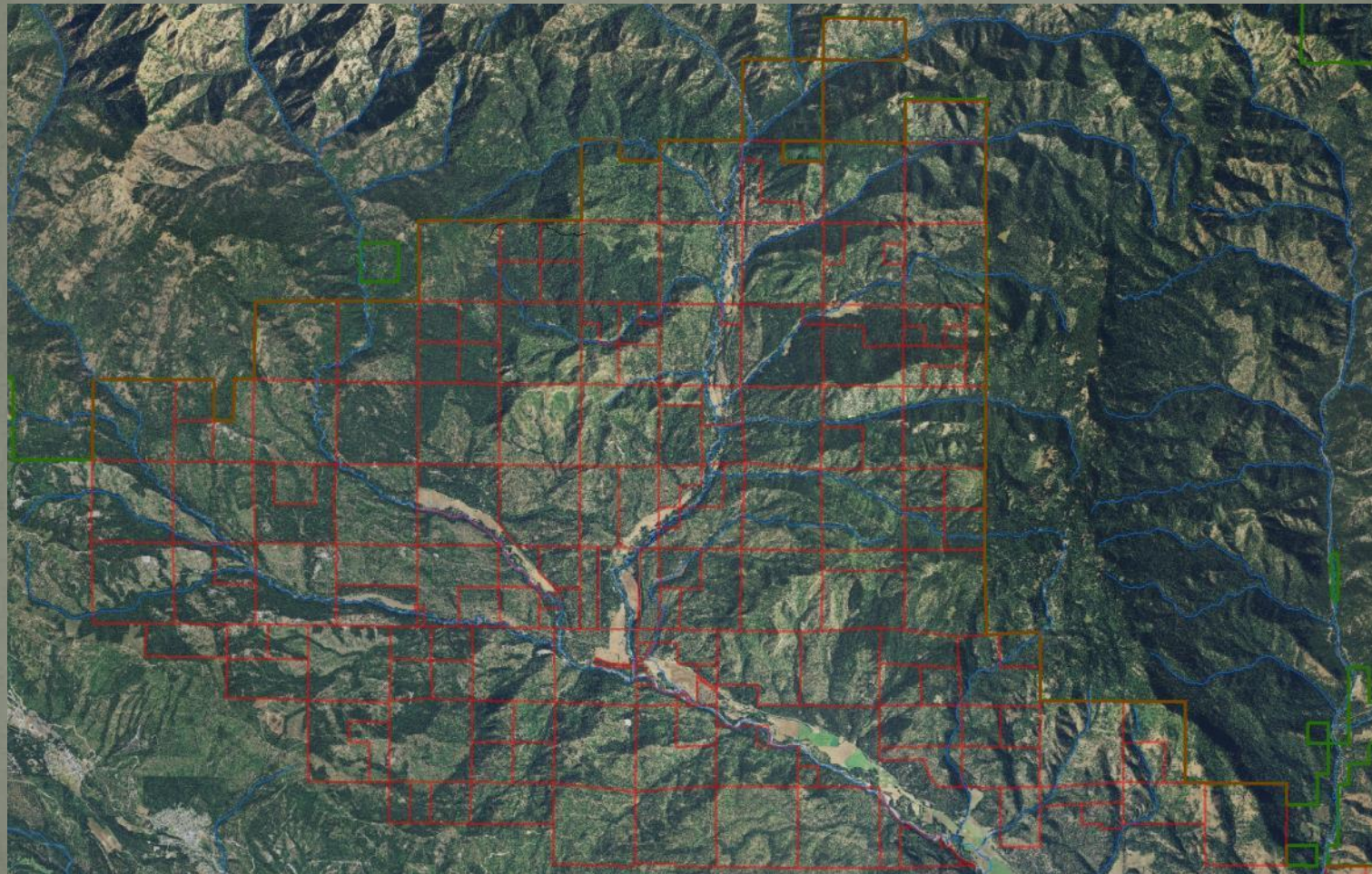


Forest Management

Teanaway Community Forest

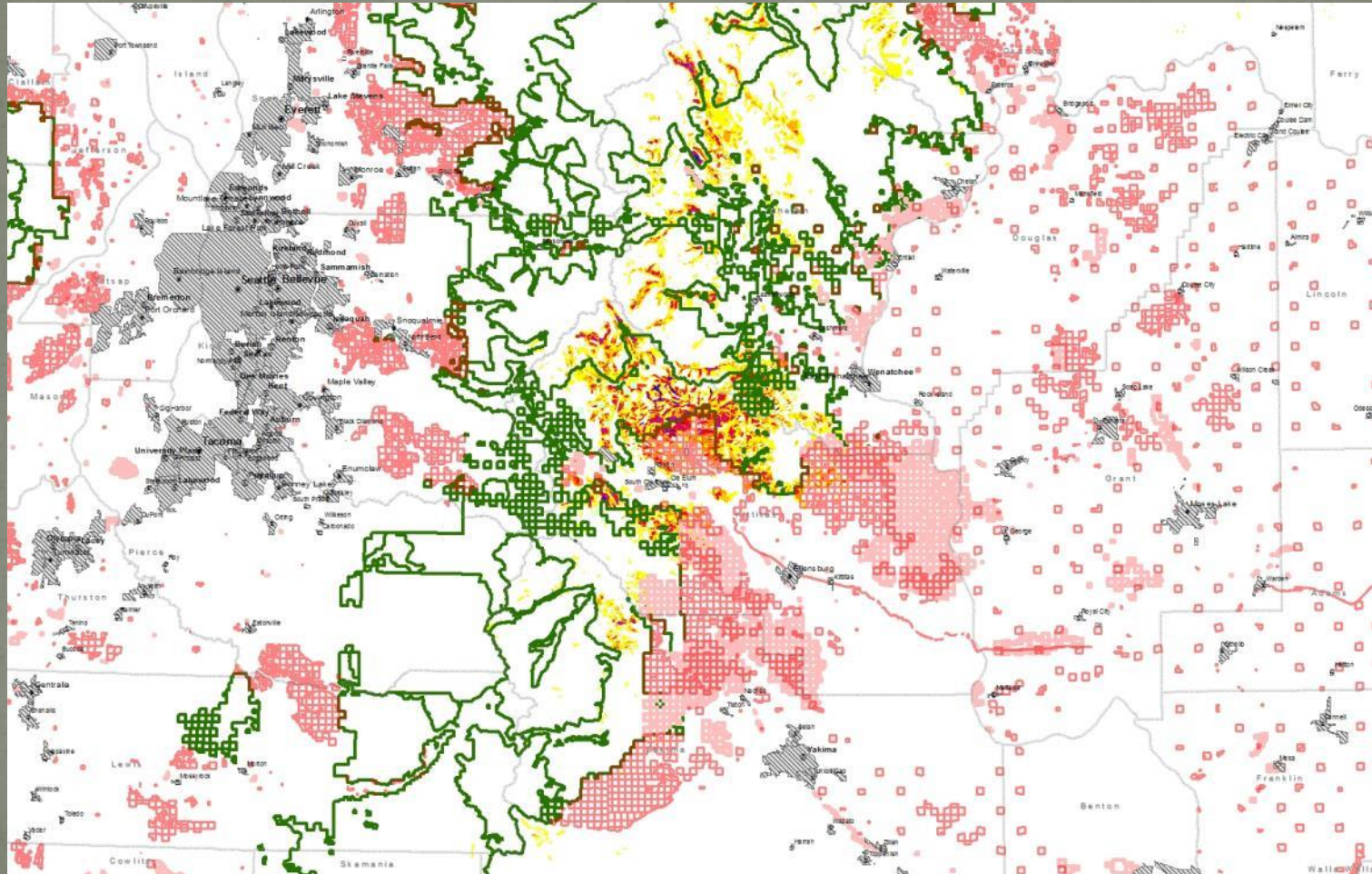
Present Day



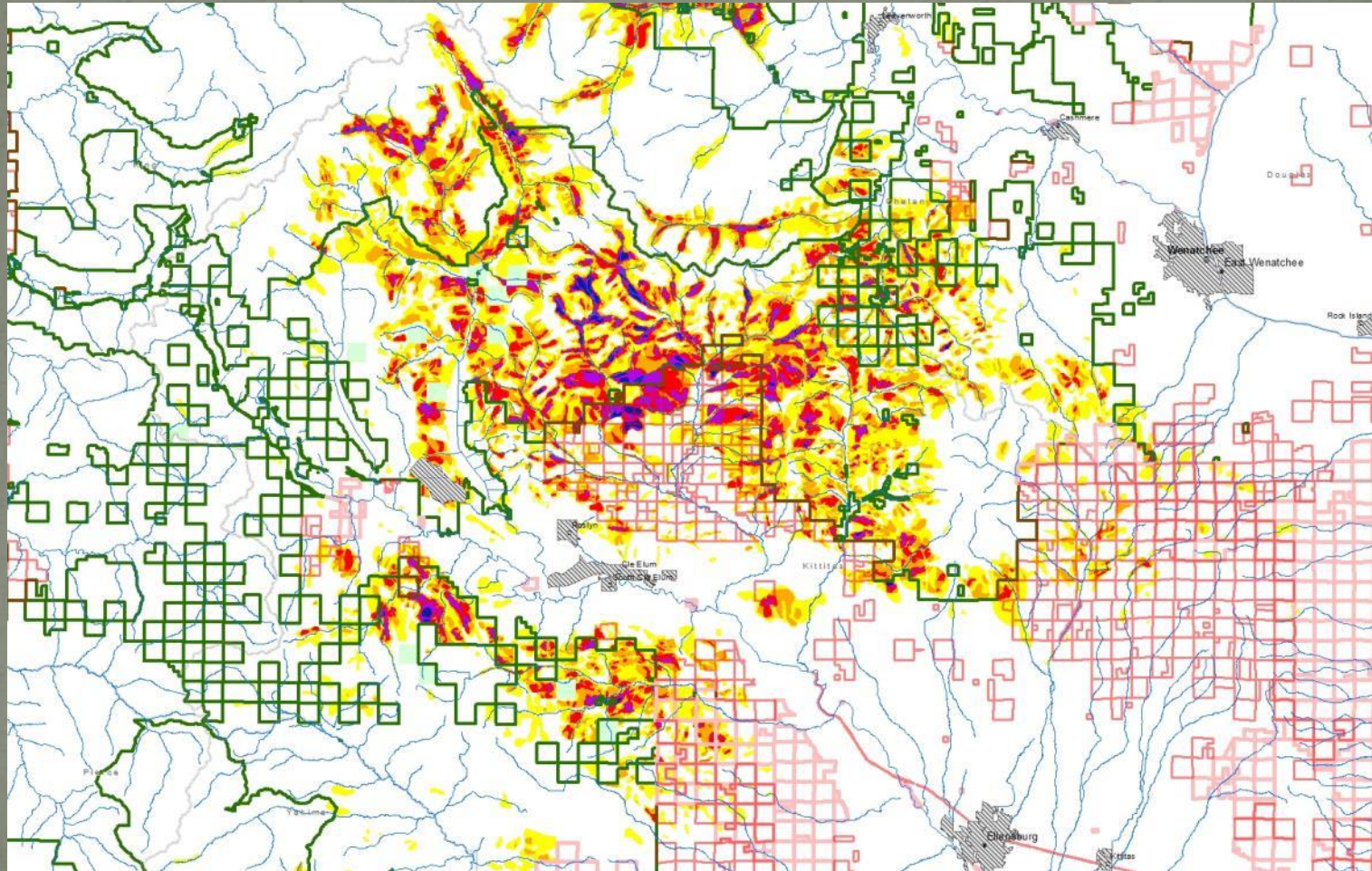
Forest Health

Western Spruce Bud Worm Defoliation

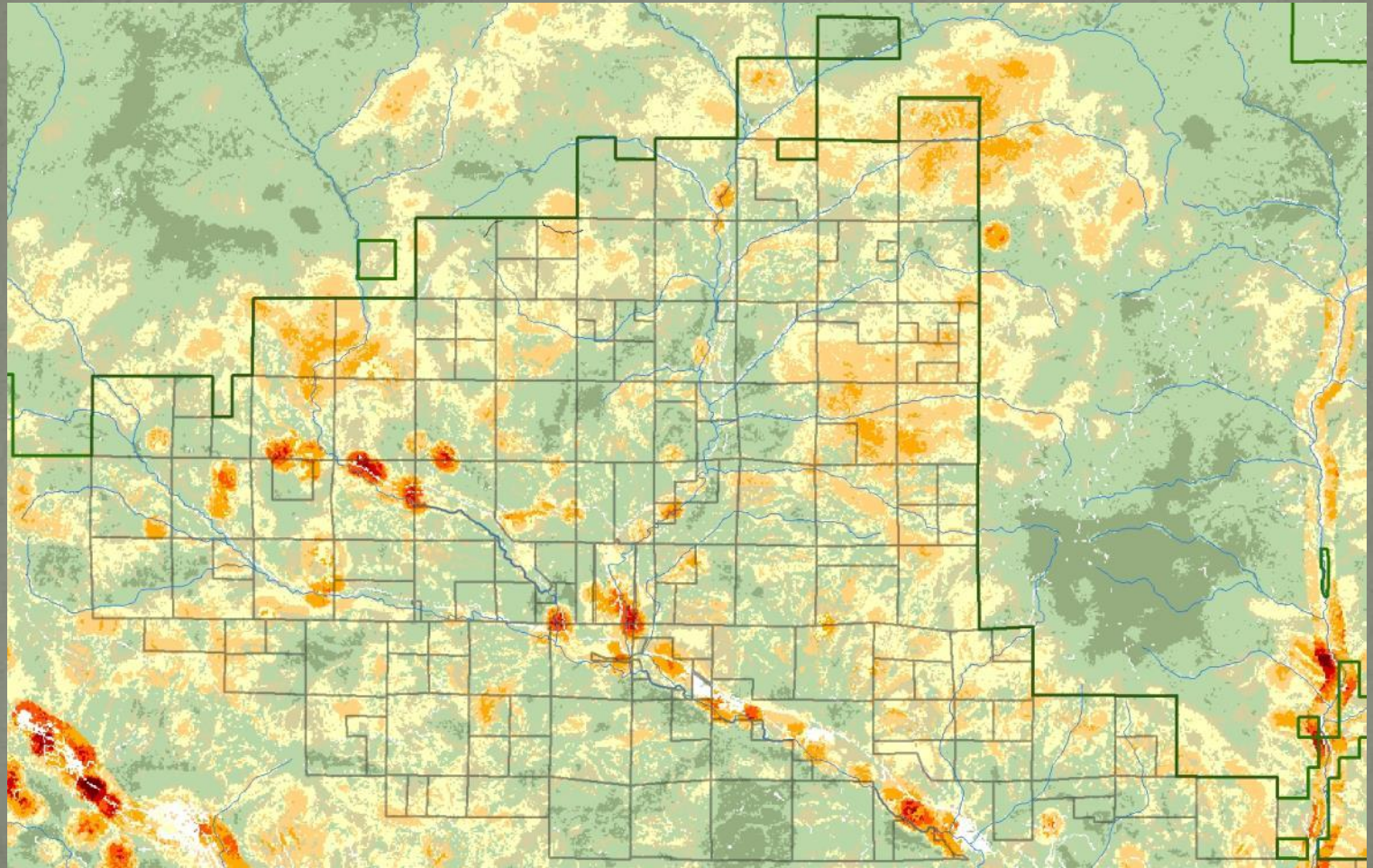
Forest health Defined in [RCW 76.06.020](#) as "the condition of a [forest](#) being sound in [ecological](#) function, sustainable, resilient, and resistant to insects, diseases, fire, and other disturbance, and having the capacity to meet landowner objectives." [RCW 76.06.140](#) points to "overcrowded" conditions (i.e., [overstocking](#)) as causative forest health impediment and well-managed forests as the first line of defense.



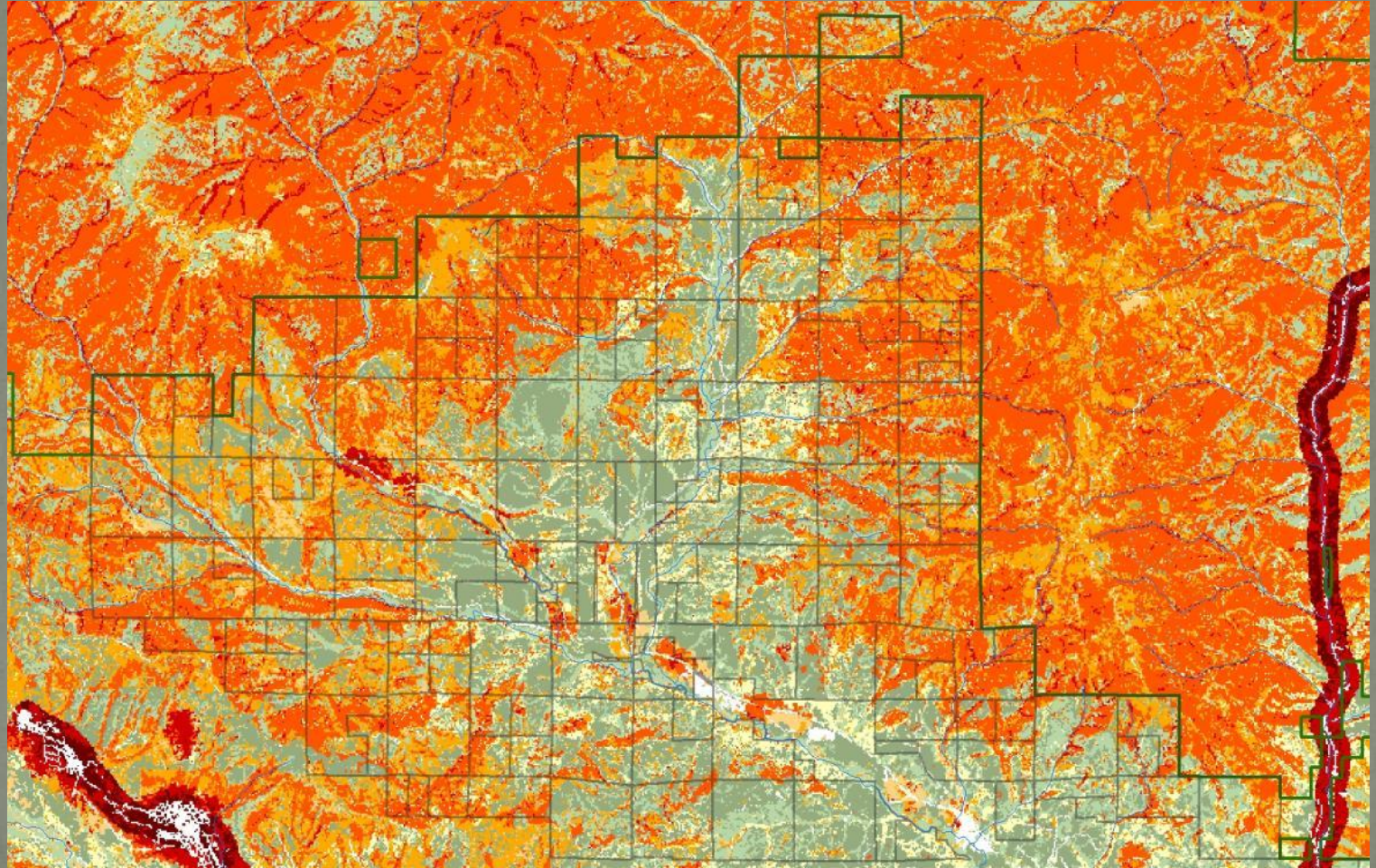
Defoliation in Kittitas County



Fire Risk map of TCF



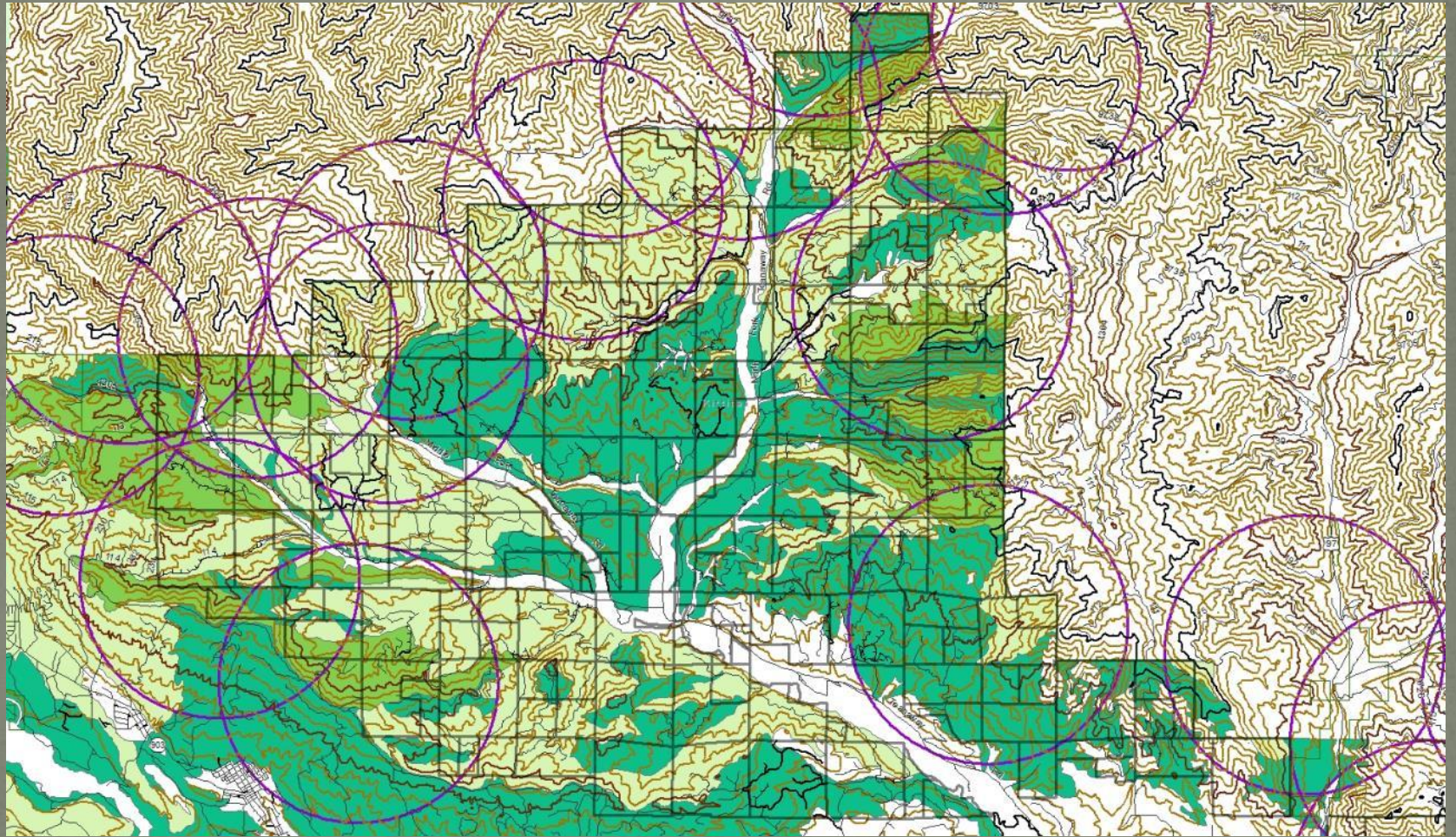
Fire Effects



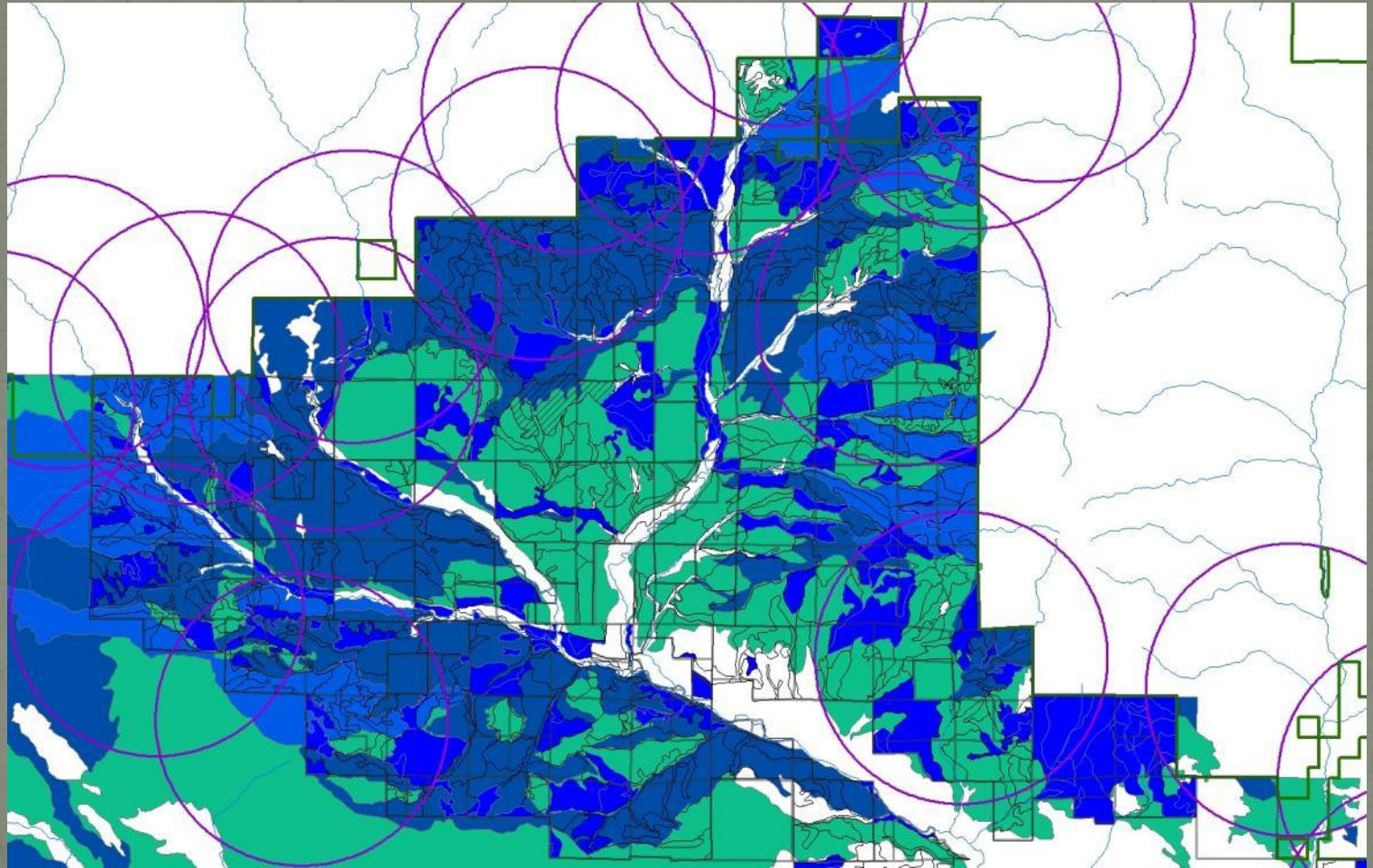
Owl Habitat Needs



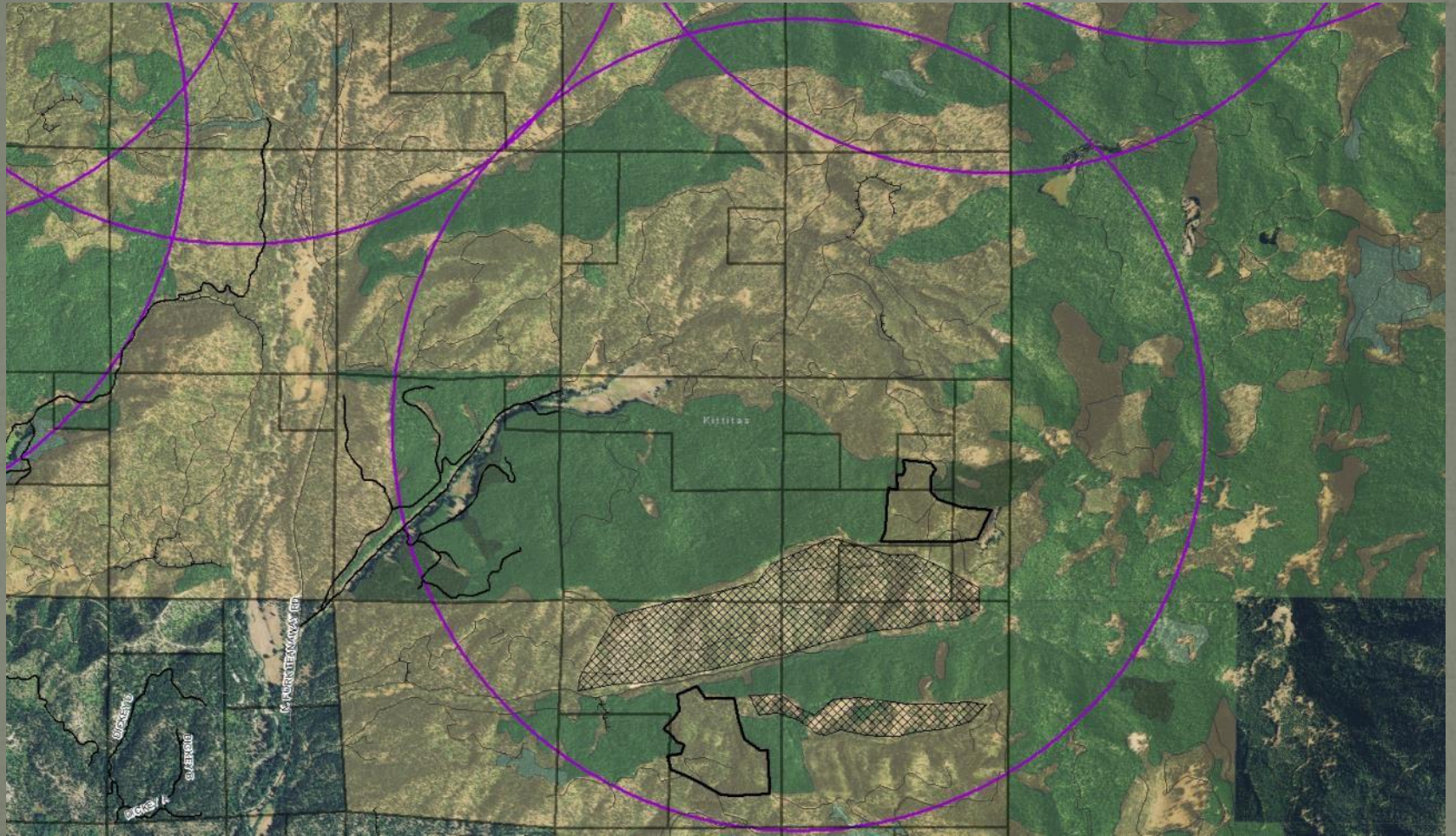
Vegetative Series



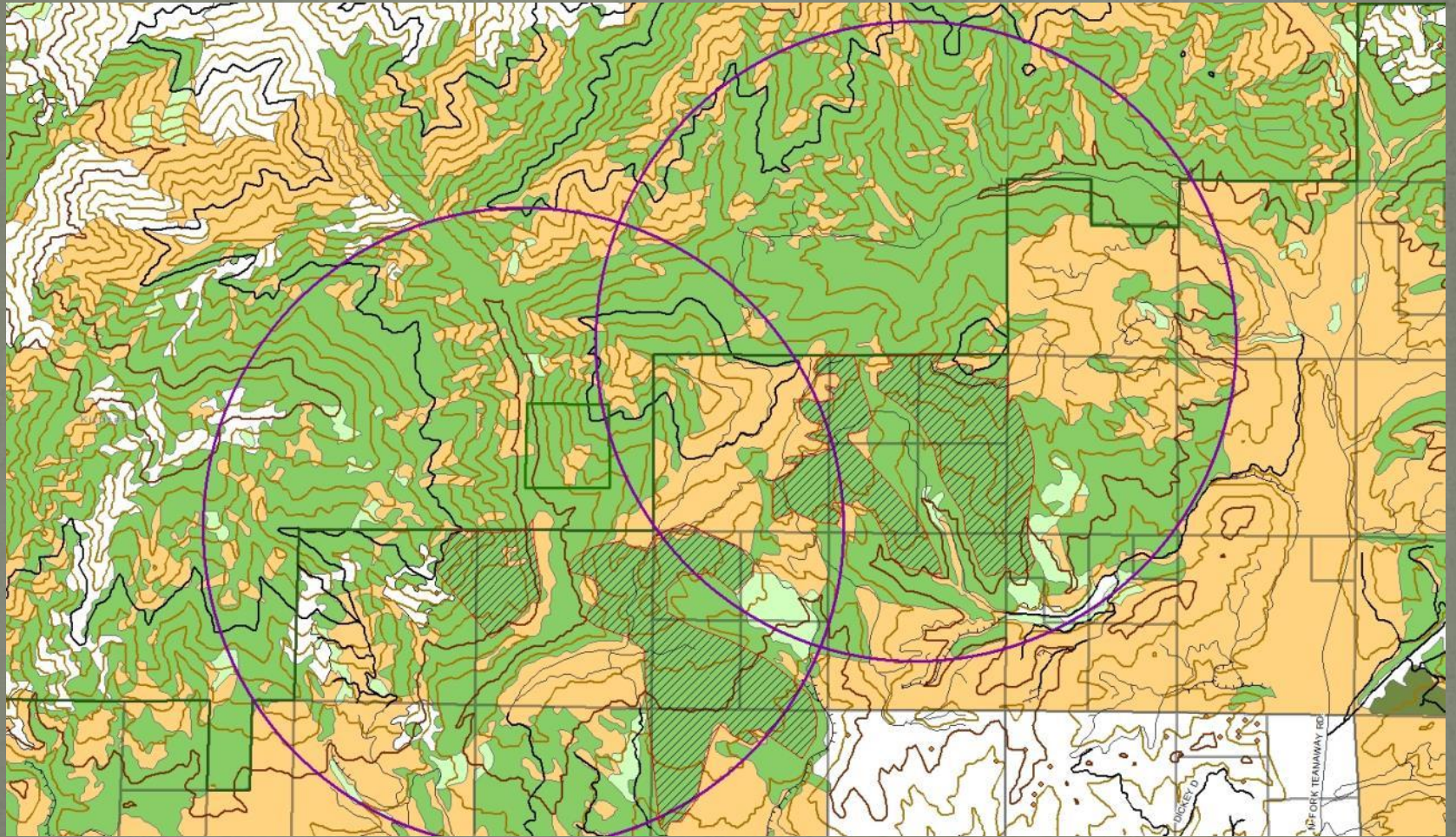
Forest Types and Site Potential Index



Site Suitability and Overall Objectives



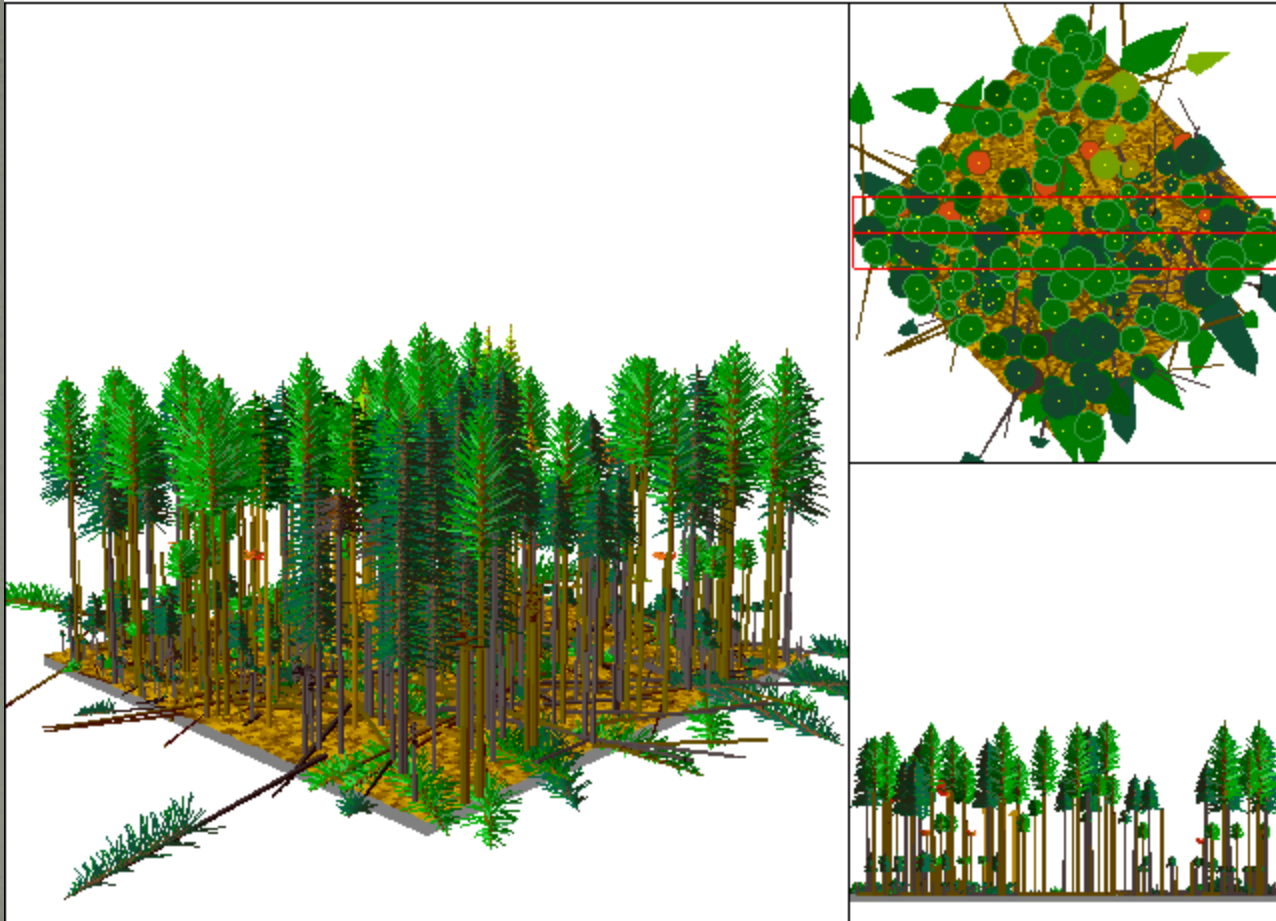
Active Management of habitat



Nesting Roosting Foraging Harvest

Stand=99162 Year=2020 Post cutting

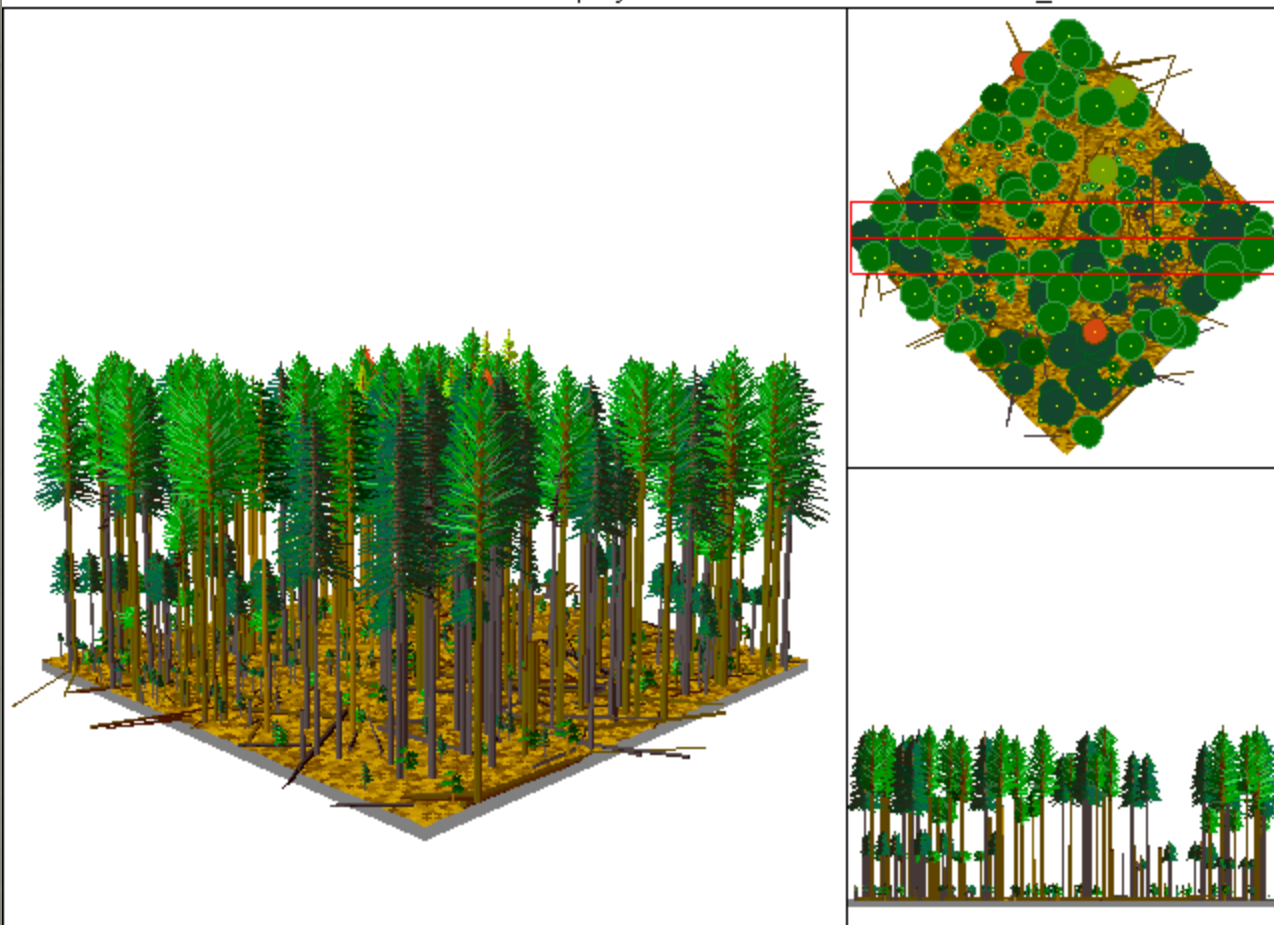
ex1b_006.svs



50 years later

Stand=99162 Year=2045 End of projection

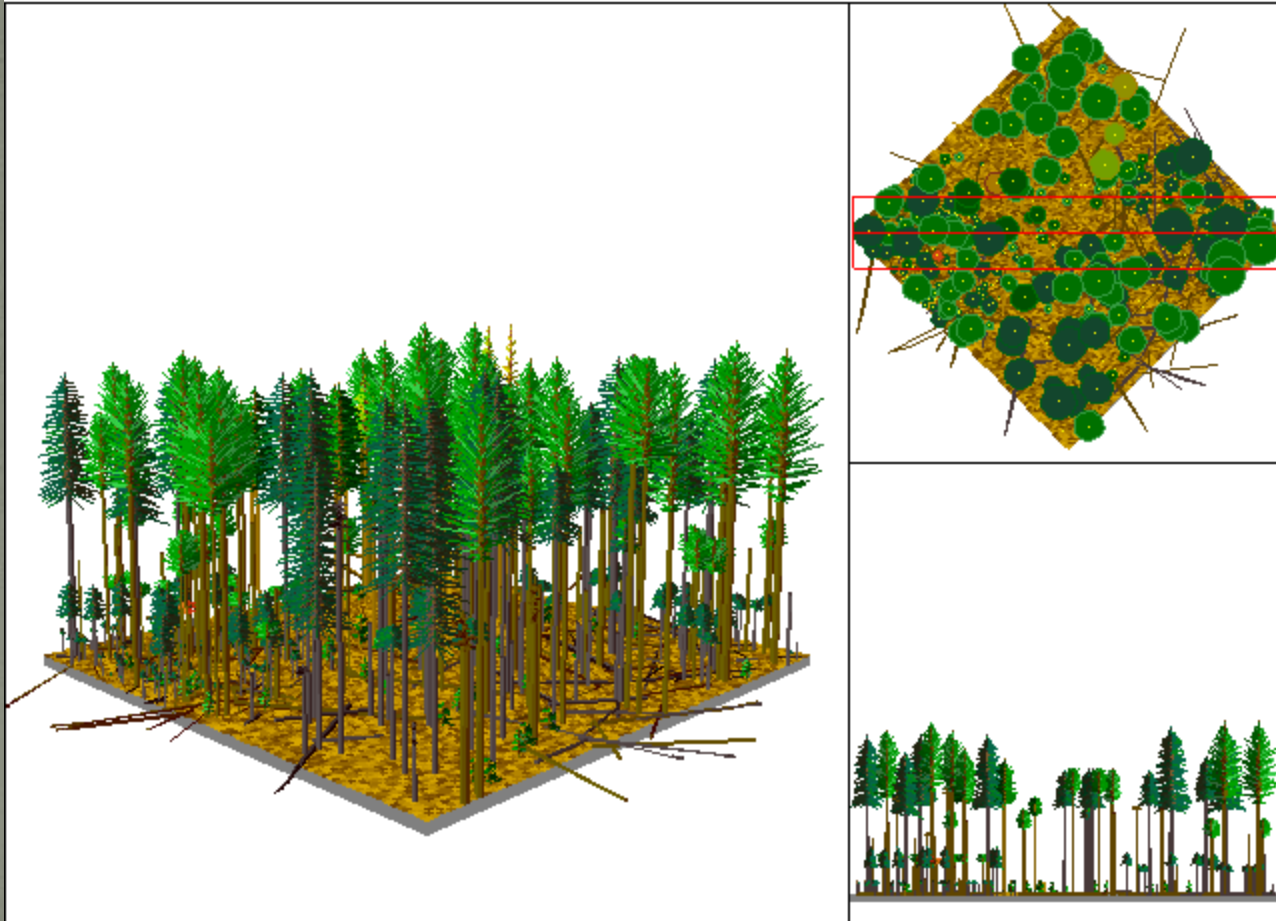
ex1b_011.svs



50% crown retention

Stand=99162 Year=2025 Beginning of cycle

ex1b_007.svs



50 years later

Stand=99162 Year=2080 Beginning of cycle

ex1b_018.svs

