

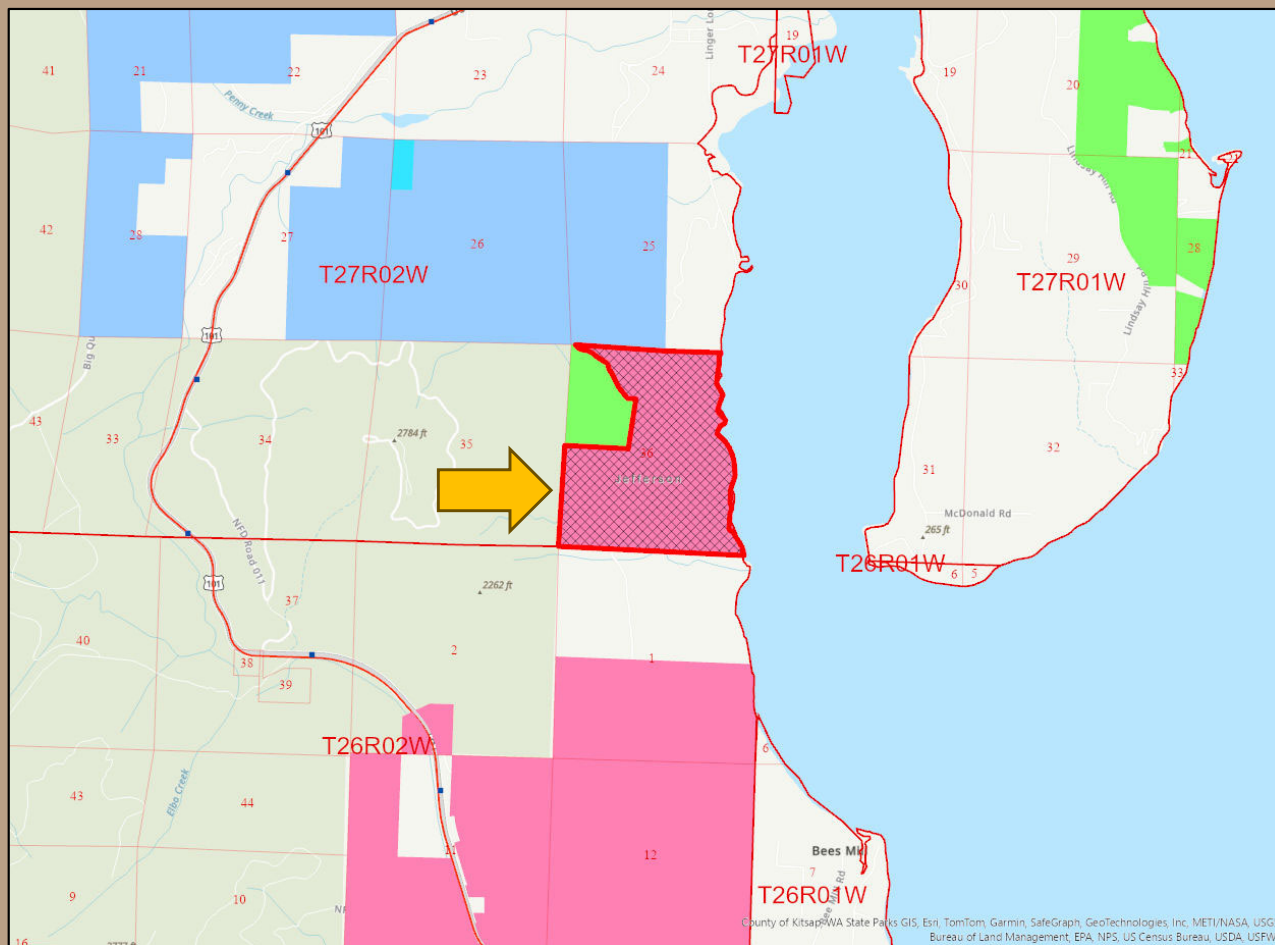


Devils Lake TLT

Proposed Trust Land Transfer Jefferson County



Devils Lake TLT

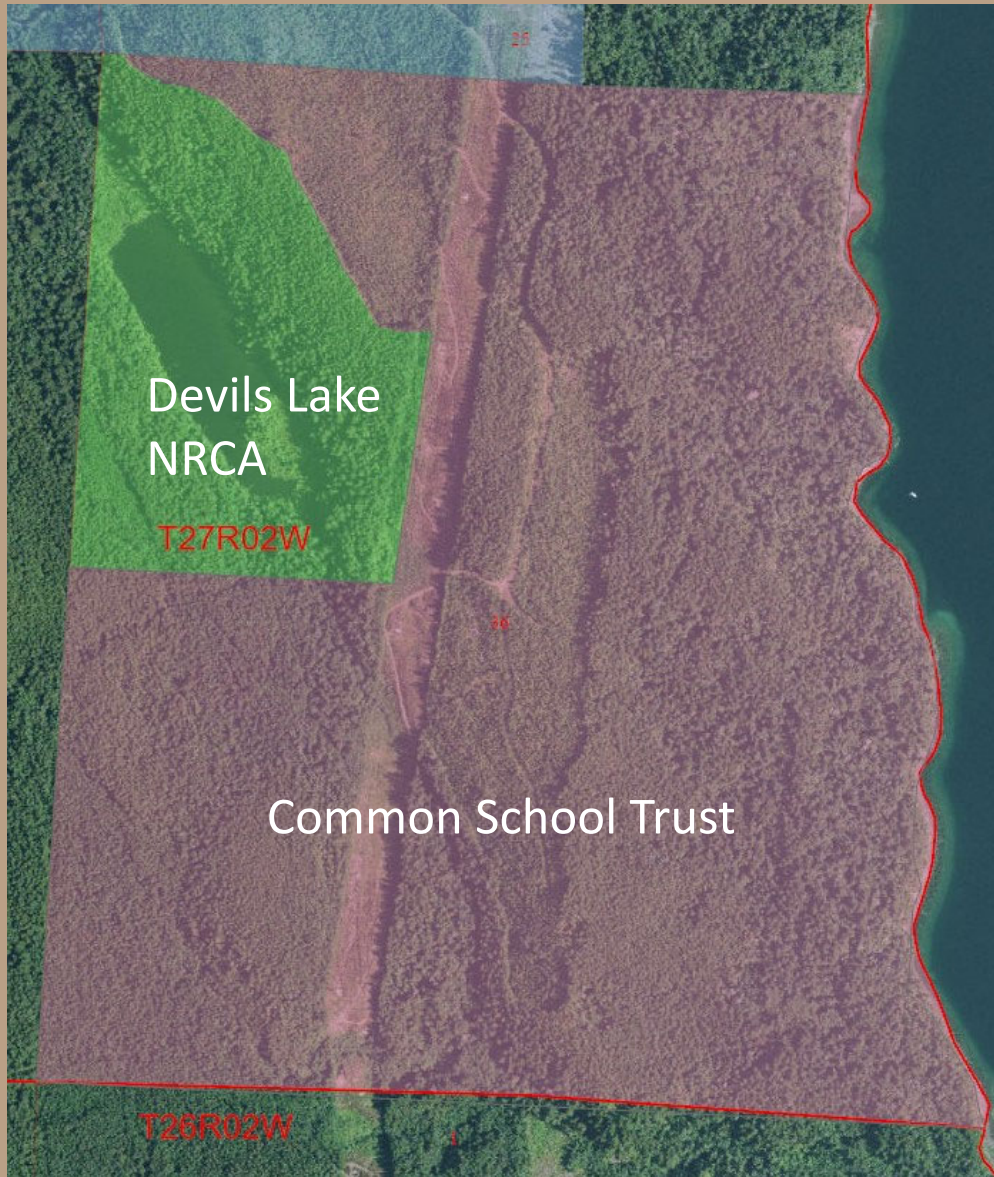


Vicinity

- East of Mt. Walker Viewpoint
- Jefferson County
- Quilcene Bay area



Devils Lake TLT



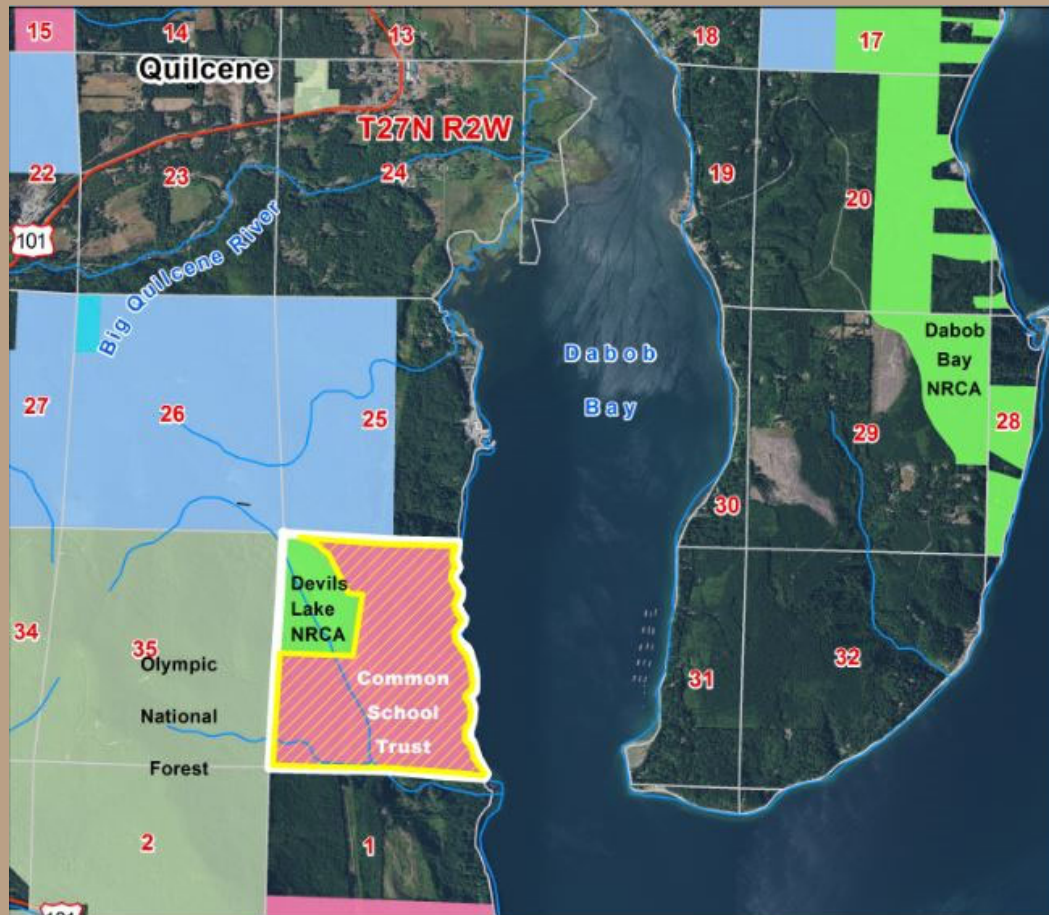
Property

- 443.04 acres
- Proposed transfer into NRCA
- Currently Common School Trust
- Expands Devils Lake NRCA



Devils Lake TLT

Overview



- The property would be transferred into the NRCA.
- The area has many protected biological and ecological species.
- Replacement lands would support the Common School Trust.



Devils Lake TLT



Valuation

Land	\$950,000
Timber	\$4,630,000
Total	\$5,580,000



Devils Lake TLT

Benefits

- Divesting of property that is inefficient to manage for timber harvest income.
- Enabling replacement to the asset with property that has greater potential for income production.
- Transferring the property to an agency steward for identified biological, ecological, and social values.
- Facilitates repositioning of a trust asset.
- Proceeds used to purchase replacement property for the Common School Trust.



Devils Lake TLT

Resolution 1632

Questions?



