



# Status Report: Teanaway Community Forest Aquatic Restoration ...



Scott Nicolai 10 May 2018



*This River Runs Forever*  
Yakima Basin Integrated Plan

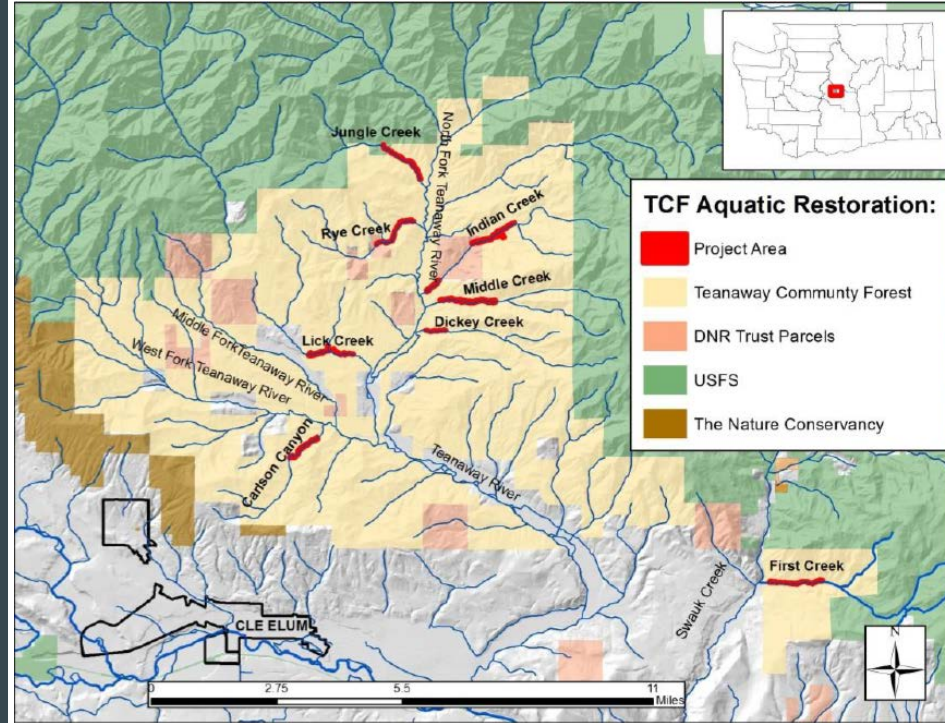
## Proposed Sites

Jungle, Rye, Lick, Carlson, Indian, Middle, Dickey, & First Creeks

8.9 miles of channel and 150 acres of floodplain to be roughened with woody material

## Expected Priority Tributary Completion:

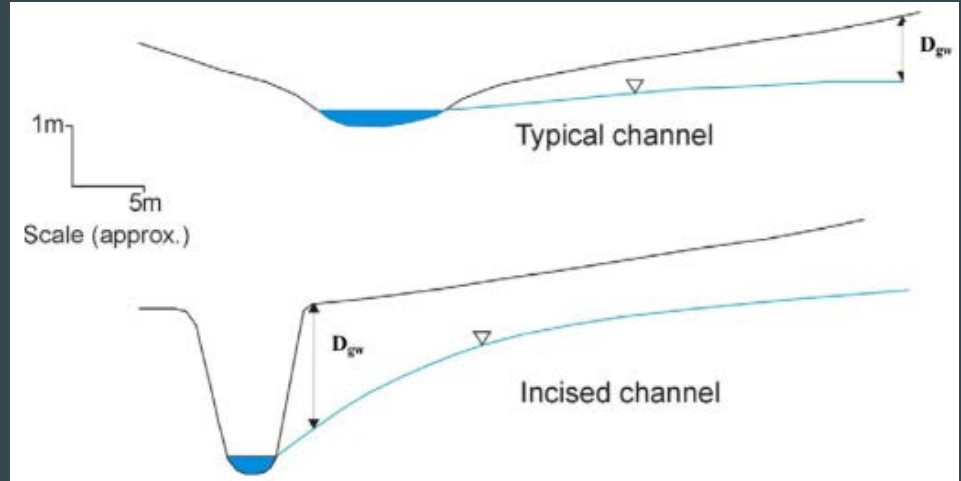
February 28, 2019





## Objective

- Activate the floodplain!



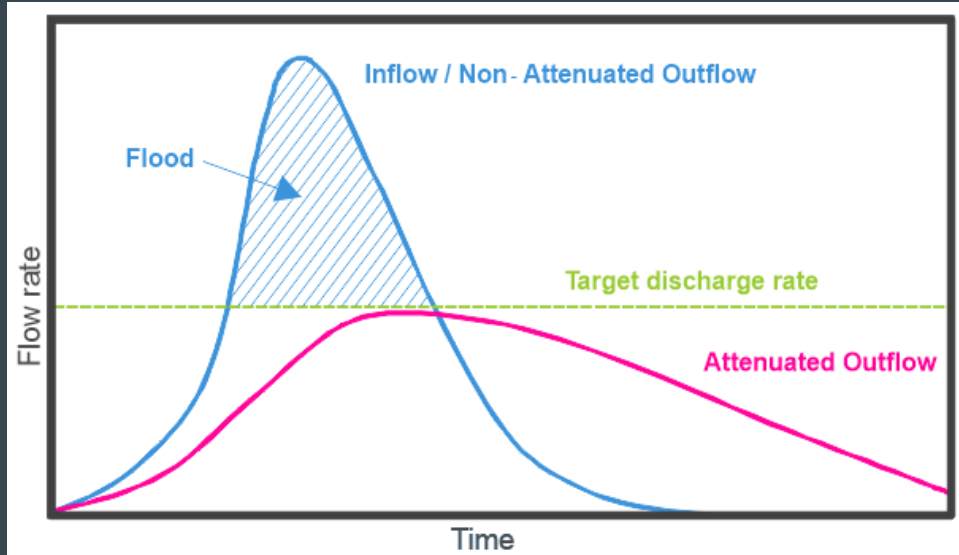
- Capture bedload/bring the channel bottom up

# Why?

- Reduce peak flows and extend the hydrograph to



- Provide cool water refugia for treaty fish when water temperatures are typically at lethal levels
- Kick start biological processes including riparian corridor development
- Partition flow and develop in stream habitat complexity
- Produce off channel foraging and rearing habitat



# How?

- Add lots and lots of locally sourced wood

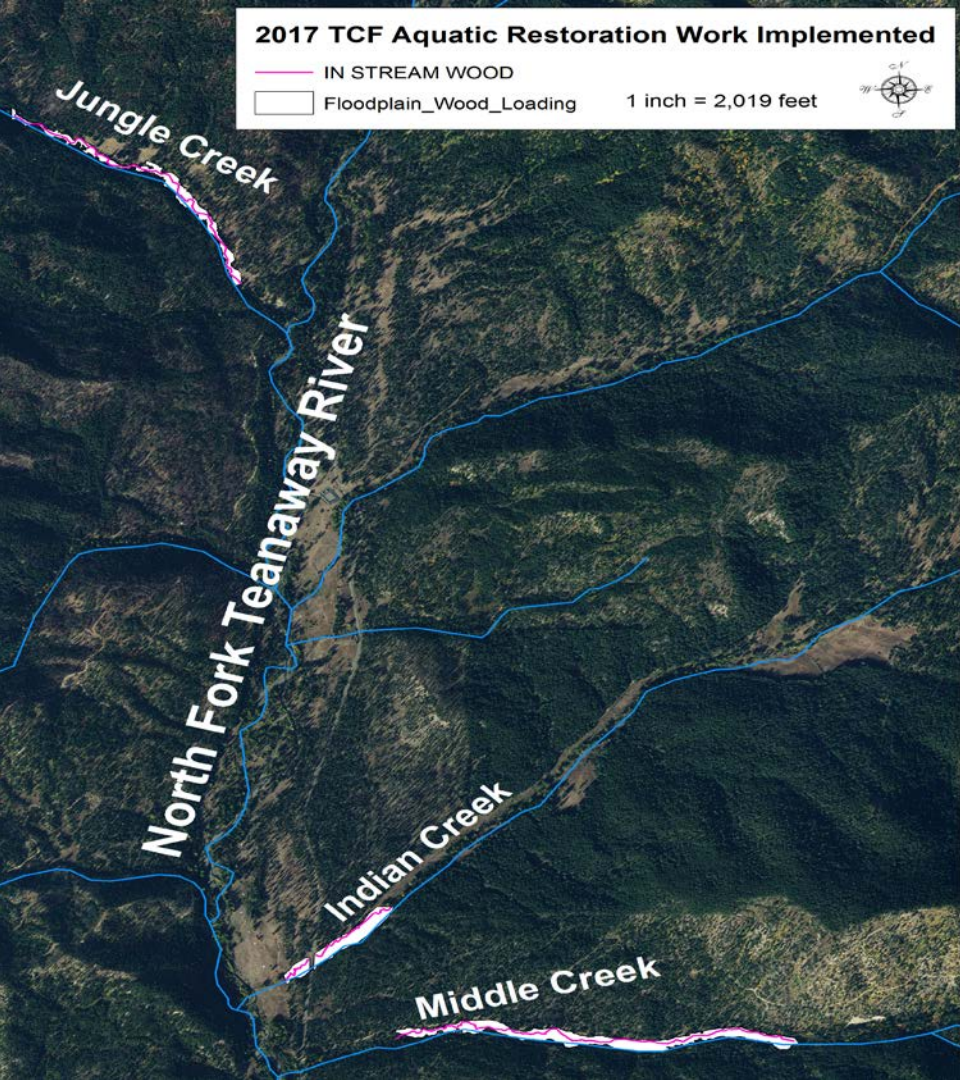


## 2017 TCF Aquatic Restoration Work Implemented

— IN STREAM WOOD

□ Floodplain\_Wood>Loading

1 inch = 2,019 feet



## Recent Progress, 2017/2018

1,987 logs and logs with root wads placed in stream

3,550 logs placed on floodplain surfaces

# Progress - Indian Creek

- **50% complete**
  - 0.9 miles of instream wood
  - 19 acres of floodplain enhancement



# Progress - Middle Creek

- Middle Creek- 100% complete
  - 1.1 miles of instream wood placed
  - 27 acres of floodplain enhancement





# Progress - Jungle Creek

- **Jungle Creek- 90% complete**
  - 125 miles of instream wood,
  - 16 acres of floodplain enhancement



# Major Time Constraints



Photo Credit: Tracy Rooney

# Major Time Constraints



Jolly Mountain Fire – 1 month work lost

Photo Credit: Tracy Rooney

# Major Time Constraints

A photograph of a forest fire at night. The fire is a bright, glowing orange and yellow line of flames and smoke, rising from a dense line of trees. The background is dark, and the sky is a deep orange-red from the fire's light. The foreground is mostly dark, with some silhouettes of trees and a small white object, possibly a building or a vehicle, visible in the lower center.

Jolly Mountain Fire – 1 month work lost

Inadvertent Cultural Resources Discovery- 4 months work lost

Photo Credit: Tracy Rooney

# Next steps

- Finish Jungle, Indian, and First Creeks – Summer 2018
- Helicopter Material Placement in Lick Creek – October 2018
- Tackle Rye, Dickey and Carlson Creeks -Summer/Fall/Winter 2018-2019
- Monitor



Questions?



---