



Public Auction Sale of Timber

September 2019

Book 1003



IMPORTANT NOTICES

Natural Resources (DNR)

Governmental Regulatory Actions or Orders

The purchaser assumes the risk of liabilities related to regulatory actions or orders by any government agency that may affect the operability of these timber sales. Such regulatory actions or orders include, but are not limited to, actions taken pursuant to the State Forest Practices Act, Chapter 76.09 RCW, and the Federal Endangered Species Act, 16 U.S.C. §§ 1531-1544. Please see timber sale contract clauses G-066 and G-220 for further information.

Threatened and Endangered Species

DNR cannot verify the presence or absence of any threatened or endangered species that may affect the operability of the timber sale. Purchasers must rely on their own assessments.

Export Restricted

All timber purchased under these state DNR contracts shall not be exported outside of the United States until the timber has been processed. Purchasers shall not violate any of the prohibitions in WAC 240-15-015 (relating to the prohibitions on export and substitution), WAC 240-15-025 (relating to reporting requirements), and WAC 240-15-030 (relating to enforcement). If purchasers knowingly violate WAC 240-15-015, purchasers shall be barred from bidding on or purchasing export restricted timber as provided.

Cover photos

Timber Sales in this book are from state trust lands, managed to help build K-12 public schools, state universities, colleges, prisons, mental hospitals, the state Capitol; and to support local services in many counties.

Top right: Landscape view of DNR-managed trust lands in western Washington. Photo courtesy of DNR staff.

Second down right: Timber harvest operations on DNR-managed trust land. Photo courtesy of DNR staff.

Third down right: Log truck loaded with timber harvested from DNR-managed trust land. Photo courtesy of DNR staff.

Bottom right: Marcus Whitman Elementary School in Richland Washington. Photo courtesy of Richland School District.

Bottom middle: Storytime at the Shelton Timberland Library. Photo courtesy of Timberland Regional Library.

Bottom left: Douglas-fir seedlings growing at the Webster Nursery. Many of these seedlings will be planted following timber harvest on DNR-managed trust lands. Photo courtesy of DNR staff.

Table of Contents

Certification Opportunities for DNR Timber Purchasers	Page 3
Bidder/Purchaser Auction and Bidding Information	Page 5
Summary of All Sales Being Offered in September	Page 11
Trumpet Sorts	Page 13
Q Phelps Creek Thin	Page 19
Cannectivity	Page 25
Buckle Up Sorts	Page 31
Q Jackson	Page 37
Q Brooks Junction	Page 41
Homalone	Page 47
Sealed Bid Form and Instructions	Page 51
Statewide Bid Bond and Instructions	Page 53
Timber Sale per Sale Bid Bond and Instructions	Page 57
Log Sort Sealed Bid Form and Instructions	Page 61



Certification Opportunities for DNR Timber Purchasers

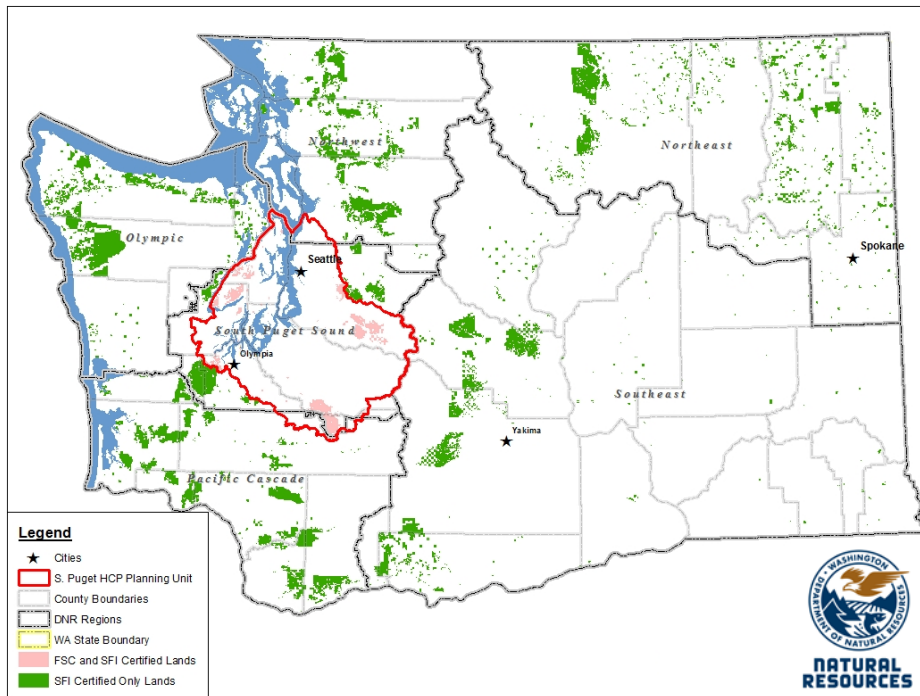
Certified forests are grown to an approved set of standards which demonstrate environmentally responsible, socially beneficial, and economically viable management practices that promote responsible forestry. This unique commitment to responsible forestry recognizes that forest landowners play a critical role in ensuring the long-term health and sustainability of our forests.

Forest Stewardship Council® (FSC®) is an independent, non-profit organization that promotes responsible management of the world's working forests through the development of forest management standards, a voluntary certification system, and trademarks that provide recognition and value to products bearing the FSC label in the marketplace. FSC standards ensure forestry is practiced in an environmentally responsible, socially beneficial, and economically viable way.

Sustainable Forestry Initiative Inc. is an independent, non-profit organization internationally endorsed and accepted around the world. The Sustainable Forestry Initiative® (SFI) program is based on the premise that responsible environmental behavior and sound business decisions can coexist. Its three-chamber Board of Directors governs all aspects of the SFI® program, with equal representation from the environmental, economic, and social sectors.

Currently, all Department of Natural Resources (DNR)-managed forestlands and conservation areas in Washington State are certified under the SFI program Standard. Forestlands within DNR's South Puget Habitat Conservation Plan Planning Unit, located within parts of King, Pierce, Thurston, Lewis, Kitsap, and Mason counties, are dually certified under both the FSC-US Forest Management Standard and the SFI program Standard.

Certification under each standard involves an inspection audit of the landowner's forest management activities by an independent, accredited third-party to verify that it meets specified forest management principles. If the forest unit complies with the specific standard, the landowner receives a certificate of conformance ensuring that responsible forestry is being practiced. Both standards encourage integration of perpetual growing and harvesting of trees with strong measures to protect wildlife, plants, soil, water, and air quality. Both standards provide a seal of approval that forests certified under these principles are well-managed. The global marketplace recognizes and endorses multiple forest certification standards. Each standard has individual market niches. By being dually certified, DNR can maximize its customer base and provide choices to the consumer.



DNR's FSC certificate number is: BV-FM/COC-080501

DNR's SFI certificate number is: PwC-SFIFM-513

DNR-managed forestlands within the South Puget Habitat Conservation Plan Planning Unit (located within parts of King, Pierce, Thurston, Lewis, Kitsap, and Mason counties) are certified as being in compliance with the Forest Stewardship US Forest Management Standard.

To learn more about chain of custody and demonstrating that your timber is derived from a responsibly managed forest and/or to learn more about becoming a participant in the FSC Program, visit <https://us.fsc.org/>.

To learn more about DNR timber sales certified under the FSC Standard, visit www.dnr.wa.gov.

FSC A.C. owns all right, title, and interest in and to the Forest Stewardship Council trademarks.

All DNR-managed forested state trust lands across the state have been certified as being in compliance with the Sustainable Forestry Initiative Forest Management Standard.

To learn more about chain of custody and demonstrating that your timber is derived from a responsibly managed forest and/or to learn more about becoming a participant in the SFI program, visit www.sfiprogram.org.

To learn more about DNR timber sales certified under the SFI program Standard, visit www.dnr.wa.gov.

SFI Marks are registered marks owned by Sustainable Forestry Initiative Inc.

To learn more about certification on DNR-managed forested state trust lands, visit <https://www.dnr.wa.gov/programs-and-services/product-sales-and-leasing/timber-sales/forest-certification> or contact:

Product Sales & Leasing Division, Product Sales Section:

Koshare Eagle, Assistant Division Manager, 360-902-1561, koshare.eagle@dnr.wa.gov
 Steve Teitzel, Operations, 360-902-1741, steve.teitzel@dnr.wa.gov

Forest Resources Division, HCP and Scientific Consultation Section:

Allen Estep, Assistant Division Manager, 360-902-2898, allen.estep@dnr.wa.gov
 Douglas Kennedy, Forest Certification Program Lead, 360-902-1283, douglas.kennedy@dnr.wa.gov

Washington State Department of Natural Resources (DNR)

Bidder's/Purchaser's Inspection of Sale Area and Forest Products

Acreage estimates and volume estimates contained within each timber notice of sale and each timber sale contract are made only for administrative and identification purposes. Except as expressly provided by the timber sale contract, the purchaser shall be responsible for paying the entire purchase price, even if the actual acreage or timber volume varies from the estimated quantity or volume shown.

All prospective bidders have the opportunity and are expected to inspect the sale area and the forest products located thereon. Bidders shall not rely on any representations by the State including, but not limited to, acreage estimates, volume estimates, appraisal or pre-bid documentation. The successful bidder/purchaser will further warrant that they have entered the timber sale contract without any reliance upon the DNR's volume estimates, acreage estimates, appraisals, pre-bid documentation, or any other representation by the DNR.

Any timber sale contract arising out of these public auctions will require the successful purchaser to warrant that they are entering the timber sale contract based solely upon their own judgment of the value of the forest products, formed after their own examination and inspection of both the timber sale area and the forest products being sold.

Exclusion and Disclaimer of Warranties

The PARTIES AGREE that the IMPLIED WARRANTIES OF MERCHANTABILITY AND FITNESS FOR A PARTICULAR PURPOSE, and ALL OTHER WARRANTIES EXPRESS OR IMPLIED, ARE EXCLUDED from this transaction, and shall not apply to the goods sold. For example, THE FOLLOWING SPECIFIC MATTERS ARE NOT WARRANTED, and are EXCLUDED from this transaction:

- a. ***The merchantability of the forest products.*** The use of the term "merchantable" in any document is not intended to vary the foregoing.
- b. ***The condition of the forest products.*** All forest products will be conveyed "AS IS."
- c. ***The acreage contained within any sale area.*** Any acreage descriptions appearing in the timber notices of sale, timber sale contract, timber sale map or other documents are estimates only, provided solely for administrative and identification purposes.
- d. ***The volume, quality, or grade of the forest products.*** The descriptions of the forest products to be conveyed are estimates only, made solely for administrative and identification purposes.
- e. ***The correctness of any soil or surface conditions, presale construction appraisals, investigations, and all other pre-bid documents prepared by or for the State.*** These documents have been prepared for the State's appraisal purposes only.
- f. ***That the sale area is free from threatened or endangered species, or their habitat.*** The State is not responsible for any interferences with forestry operations that result from the presence of any

threatened or endangered species, or the presence of their habitat, within the sale area.

g. *That the forestry operations to be performed under this contract will be free from regulatory actions by governmental agencies.* The State is not responsible for actions to enforce regulatory laws, such as the Washington Forest Practices Act (Chapter 76.09 RCW), taken by the Department of Natural Resources or any other agency that may affect the operability of these timber sales.

h. Items contained in any other documents prepared for or by the State.

Please also see timber sale contract clause G-060 for further information.

BIDDING PROCEDURES FOR TIMBER AUCTIONS

The general requirements that follow are a part of all Timber Notices of Sale to be auctioned by the Department of Natural Resources (DNR).

General Information

The State reserves the right to waive minor irregularities and the right to reject any or all bids.

A. This book contains the timber notices of sale and maps for each timber sale scheduled to be auctioned. More specific information can be obtained by contacting the appropriate region office at the number listed on the back cover of this book.

B. The timber notice of sale is a summary of sale information. For more specific information, interested parties are encouraged to view the Appraisal Packets on the DNR Internet Site @ www.dnr.wa.gov, this will take you directly to the Product Sales Section. The Appraisal Packets contain **DRAFT** copies of the timber notice of sale, map, contract, road plan, cruise data, precruise and cruise narrative, Forest Practices Application (FPA).

C. The sale preview packets may be obtained at no charge for individual sales by visiting the appropriate region office.

D. Timber sale contracts contain extensive terms and conditions that will be binding upon successful high bidders. Each bidder should carefully review all terms contained in the appropriate **DRAFT** timber sale contract prior to bidding on a sale, and should review the final contract prior to signing. **DRAFT** timber sale contracts are contained in the preview and presales packets and are available upon request at the respective region office.

E. Sales advertised in this book have not been approved by the Board of Natural Resources and are subject to the Board's approval before they will be sold. The Board meets and approves sales approximately six weeks prior to auction. All sales are subject to confirmation by the DNR under RCW 79.15.120.

F. The State does not guarantee the accuracy of any information contained herein pertaining to particular sales. Therefore, all prospective purchasers are expected to make their own independent inspections and appraisals prior to bidding.

G. If any conflict exists between the information in the Timber Notice of Sale, timber sale map,

sale preview packets and that in the timber sale contract, the **signed contract will prevail**.

H. Purchasers must pay the Forest Excise Tax on the bid price, permanent road construction costs, and other considerations. The tax rate is 5% without the EARR credit and 4.2% with the credit. For more information contact the Department of Revenue, Forest Tax Section at 1-800-548-8829.

I. **Within 30 days of sale confirmation, the apparent high bidder will provide to the State the Performance Security** specified on each Notice of Sale. **The successful bidder also agrees to return a signed contract to the State within 30 days of confirmation.** Failure to provide a signed contract to the state within 30 days of confirmation may result in a loss of bidder's rights to the products sold and forfeiture of initial deposit moneys.

J. Each DNR region office has information about sales offered in that region. For further information, contact the respective DNR region office. Region office addresses and telephone numbers appear on the back cover of this booklet.

K. The purchaser assumes the responsibility for any costs associated with extra maintenance or repair levied by a county for any county road used by the purchaser.

Bidding Process

A. All timber will be auctioned using the sealed bid method.

B. Bids submitted on day of auction must be in the bid box at the specified auction location before 10:00 a.m. The respective DNR region office must receive mailed bids by 4:30 p.m., on the last business day before the auction. Bidders assume all risk for the method of delivery.

C. The DNR has the right to reject bid forms that are completed incorrectly. *All bid forms must have an original signature on behalf of the person or entity submitting the bid, and must be on the form provided in this booklet or a photocopy thereof. Revised documents are not permissible.* Bidding instructions are on the back of the Sealed Bid Form. A bid deposit must be included in the sealed bid envelope unless using a Timber Sale Statewide Bid Bond.

D. All bids must include the completed Sealed Bid Form and bid deposit.

E. Bids will be opened in each respective region in the order in which sales appear in the Public Auction Sale of Timber book (alphabetically by county and by agreement number). Sales added after the book is printed will be inserted to retain this order. Sort sales may be auctioned out of this sequence at the State's convpignce.

F. If a tie bid occurs, the names of the tie bidders will be placed in a hat and the successful bidder will be determined by a drawing.

G. For sales offered on a stumpage basis, the apparent high bidder on a particular sale will have the option of withdrawing additional sealed bids submitted for any remaining sales to be auctioned. The apparent high bidder must exercise this option within two minutes after the apparent high bidder is announced. **This option is not available for sales offered on a delivered basis.**

Auction Time and Location

Auctions will start at 10:00 a.m. and close at 4:00 p.m. on the date and at the location specified in each Timber Notice of Sale.

Bid Deposits

- A. Required bid deposits are listed on each Timber Notice of Sale.
- B. Bid deposits must be in the form of cash, certified check, cashiers' check, money order or bid bond.
- C. Bid bonds may be either a Timber Sale Statewide Bid Bond or a Timber Sale Per Sale Bid Bond.
- D. All bid deposits shall be submitted by the person or entity submitting the bid and made payable to the Department of Natural Resources. **Third party deposits will not be accepted.**

Timber Sale Per Sale Bid Bonds

- A. The Per Sale Bid Bond shall guarantee payment of the bid deposit **within ten days of auction.**
- B. The balance between the bid bond and the Initial Deposit payment is due **by 4:30 p.m., on the day of auction.**
- C. Additional forms and instructions for a Per Sale Bid Bond are available at any DNR region office.

Timber Sale Statewide Bid Bond

- A. Statewide Bid Bonds shall guarantee payment of the Initial Deposit on any statewide timber sale while the bond is in effect.
- B. The Statewide Bid Bond must be received by the Department of Natural Resources, Product Sales and Leasing Division, P.O. Box 47014, Olympia, Washington, 98504-7014, ten days in advance of the auction date. The bond shall be in the amount of \$150,000.00.
- C. Successful bidders using a Statewide Bid Bond must pay the total Initial Deposit payment (10% of the total bid price) **by 4:30 p.m., on the day of the auction.**
- D. A Statewide Bid Bond cannot be used to secure the Initial Deposit payment due the day of auction.
- E. Additional forms and instructions for a statewide bid bond are available at any DNR region office.

Payments

The initial deposit for a sale is 10% of the total bid value as submitted by the apparent high bidder (25% if the bidder is a defaulter as defined under WAC 332-140-300) and never less than \$5,000.00 for lump sum sales. For Lump Sum sales appraised at less than \$5,000.00, the entire bid value is due on day of auction.

- A. Apparent high bidders using cash, certified check, cashiers' check or money order as a bid deposit must pay the total Initial Deposit amount by 4:30 p.m. on auction day.
- B. Apparent high bidders using a Timber Sale Per Sale Bid Bond as a bid deposit must pay the difference between the bid deposit and the total initial deposit by 4:30 p.m., on the day of auction. The bid bond amount must be replaced with a certified check, cashiers' check, bank draft, cash, money order, or wire transfer within ten days of the auction.
- C. Apparent high bidders using a Timber Sale Statewide Bid Bond must pay the entire Initial Deposit amount by 4:30 p.m. on the day of auction.

Fees due on the day of sale must be paid by 4:30 p.m.

All payments must be in the form of a certified check, cashiers' check, bank draft, cash, money order or wire transfer.

Eligibility to Bid

In order to bid on State timber sales you must be:

- 18 years of age (or have a co-signer who meets the eligibility requirements)
- Licensed to do business in the State of Washington
- Eligible to bid on Export Restricted timber
- Authorized to submit bids

Authorized Representatives

Company officers or company authorized representatives may bid on State sales, sign State documents, or sign checks. A list of authorized representatives and their specific authorities must be submitted, in writing, to the Department of Natural Resources, Product Sales and Leasing Division, P.O. Box 47014, Olympia, Washington, 98504-7014, ten days in advance of the auction. A company owner or officer must sign this submittal.



Summary Report of All Sales for the Month of September 2019

Board Sales

<u>County</u>	<u>Region</u>	<u>Agree #</u>	<u>FSC® Sale Name</u>	<u>Volume</u>	<u>Value</u>
Cowlitz	Pacific Cascade	98366	TRUMPET VRH RMZ SORTS	2,991	\$1,592,780.00
Klickitat	Southeast	88241	Q PHELPS CREEK THIN	3,366	\$848,000.00
Pacific	Pacific Cascade	98244	CANNECTIVITY	3,470	\$740,000.00
Snohomish	Northwest	98676	BUCKLE UP VRH WMZ Sorts	6,374	\$3,452,876.00
Spokane	Northeast	98225	Q JACKSON	5,129	\$826,000.00
Stevens	Northeast	98161	Q BROOKS JUNCTION	6,740	\$1,329,000.00
Wahkiakum	Pacific Cascade	98227	HOMALONE	2,601	\$574,000.00
Total				30,671	\$9,362,656.00



Scan with your smartphone or tablet to go to the September 2019 timber auction page



TIMBER NOTICE OF SALE

SALE NAME: TRUMPET VRH RMZ SORTS

AGREEMENT NO: 30-98367 - 30-98375

AUCTION: September 26, 2019 starting at 10:00 a.m.

COUNTY: Cowlitz

Pacific Cascade Region Office, Castle Rock, WA

SALE LOCATION: Sale located approximately 6 miles east of Toutle

PRODUCTS SOLD

AND SALE AREA: All delivered timber described below, except for leave trees bounded by yellow "Leave Tree Area" tags and pink flagging and individual trees marked with blue paint, and all down timber existing 7 years prior to the day of sale, bounded by; white "Timber Sale Boundary" tags with pink flagging, blue "Special Management Boundary" tags with pink flagging, property line, the 4200 and 4240 roads in Unit 1.

All timber marked with orange paint and bounded by; white "Timber Sale Boundary" tags with pink flagging and blue "Special Management Boundary" tags with pink flagging in Unit 2 meeting the specifications described below; on parts of Sections 4, and 9 all in Township 9 North, Range 2 East W.M., containing 100 acres, more or less.

MINIMUM BID AND ESTIMATED LOG VOLUMES:

Table with 10 columns: Agreement #, Sort #, Species and Sort Specifications, Average Log Length, Estimated Volume (Mbf, Tons), Tons Per MBF, Minimum Bid Delivered Prices (\$/mbf, \$/Ton), Total Appraised Value, Bid Deposit. Rows include various timber types like DF 5" -11" dib, WW 5" - 11" dib, RA Pulp 2"+, etc.

Totals: 2991 20053 \$1,592,780.00

CERTIFICATION: This sale is certified under the Sustainable Forestry Initiative® program Standard (cert no: PwC-SFIFM-513)

BID METHOD: Sealed Bids UNIT OF MEASURE: MBF Scale/Tonnage Scale

EXPIRATION DATE: April 30, 2020 ALLOCATION: Export Restricted



TIMBER NOTICE OF SALE

PAYMENT

SECURITY: To be determined by the State as described in Clause P-045.2 of the Purchaser's Contract.

BIDDING

PROCEDURES:

A separate sealed bid and envelope must be submitted for each log sort. Prospective Purchasers may bid on any or all log sorts. On the day of sale the Purchaser must bring their bid deposit up to 10% of their total bid price. Complete bidding procedures and auction information may be obtained from the Pacific Cascade Region Office in Castle Rock WA. Phone number (360)577-2025.

TIMBER EXCISE

TAX:

Purchaser must pay the forest excise taxes associated with the log sorts delivered to them. The tax rate for this sale is 4.2 %. Taxable Stumpage = Total Delivered Value – (Harvest Cost + Estimated Haul Cost + ARRF). For more information contact the Department of Revenue, Forest Tax Section at 1-800-548-8829.

Use the following rates for estimating taxable stumpage:

Harvest Cost = \$0.00 per MBF for sorts 1, 2, 3, 4, 5 and 6 and \$12.00 per Ton for sorts 7, 8 and 9.

Hauling Services Payment Rate per Ton
= (Base Rate + Mileage Rate) x (Contractor's hauling bid factor)

Base Rate = \$2.35 per ton

Mileage Rate = ((\$0.16 x C miles) + (\$0.11 x A miles)) x Fuel Index Factor

ARRF = \$0.00 per MBF for sorts 7, 8 and 9 and \$26.00 per MBF for sorts 1, 2, 3, 4, 5 and 6.

Note: To calculate ARRF rates per ton use the tons\mbf conversion factor in the table above.

CONFIRMATION:

Each sort is subject to confirmation following auction. Sorts will not be confirmed until at least 10 days after auction. Final contract award is contingent upon the State's haul cost analysis. Actual haul route may vary and is subject to change at the State's discretion.

SPECIAL REMARKS:

The successful Purchaser(s) will be required to purchase logs from the sale area upon delivery to their location specified in the bid submitted. Logs will be delivered to the Purchaser's delivery location by the State's contract harvester. Purchaser is responsible for weighing and scaling costs. All tonnage loads will be weighed and all mbf loads will be scaled at State approved locations. The State reserves the right to determine where logs are authorized to be scaled and weighed.

For more information regarding this log sort sale visit our web site:
<http://www.dnr.wa.gov/programs-and-services/product-sales-and-leasing/timber-sales/timber-auction-packets>. If you have questions call Jon Olson at the Pacific Cascade



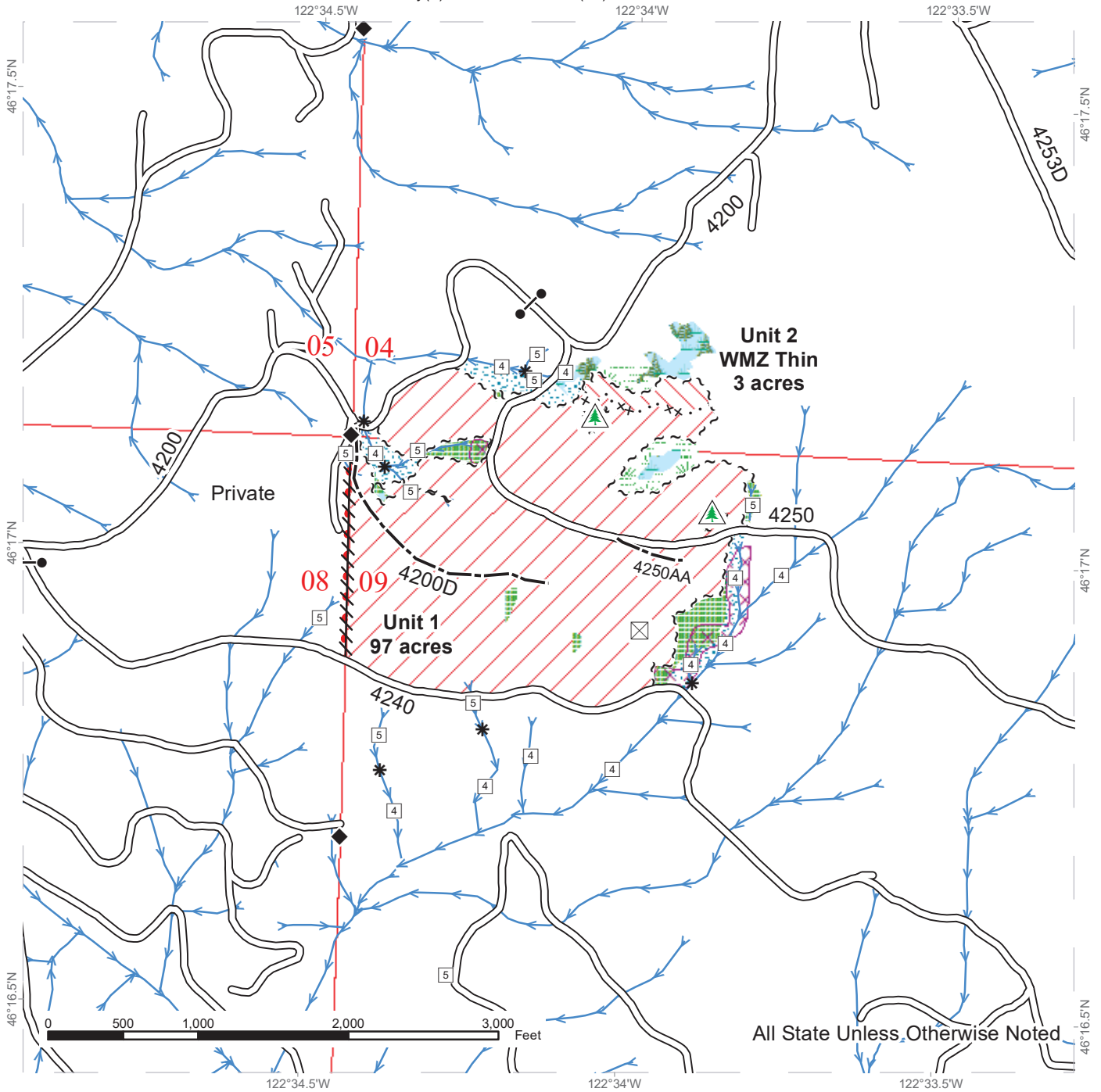
TIMBER NOTICE OF SALE

Region Office at (360)577-2025 or Steve Teitzel at the Product Sales and Leasing Division
Office in Olympia at (360)902-1741.

TIMBER SALE MAP

SALE NAME: TRUMPET VRH RMZ SORTS
AGREEMENT #: 30-098366
TOWNSHIP(S): T09R02E
TRUST(S): Common School and Indemnity(3), Scientific School (10)

REGION: Pacific Cascade Region
COUNTY(S): COWLITZ
ELEVATION RGE: 1,918 - 2,765 ft.



All State Unless Otherwise Noted

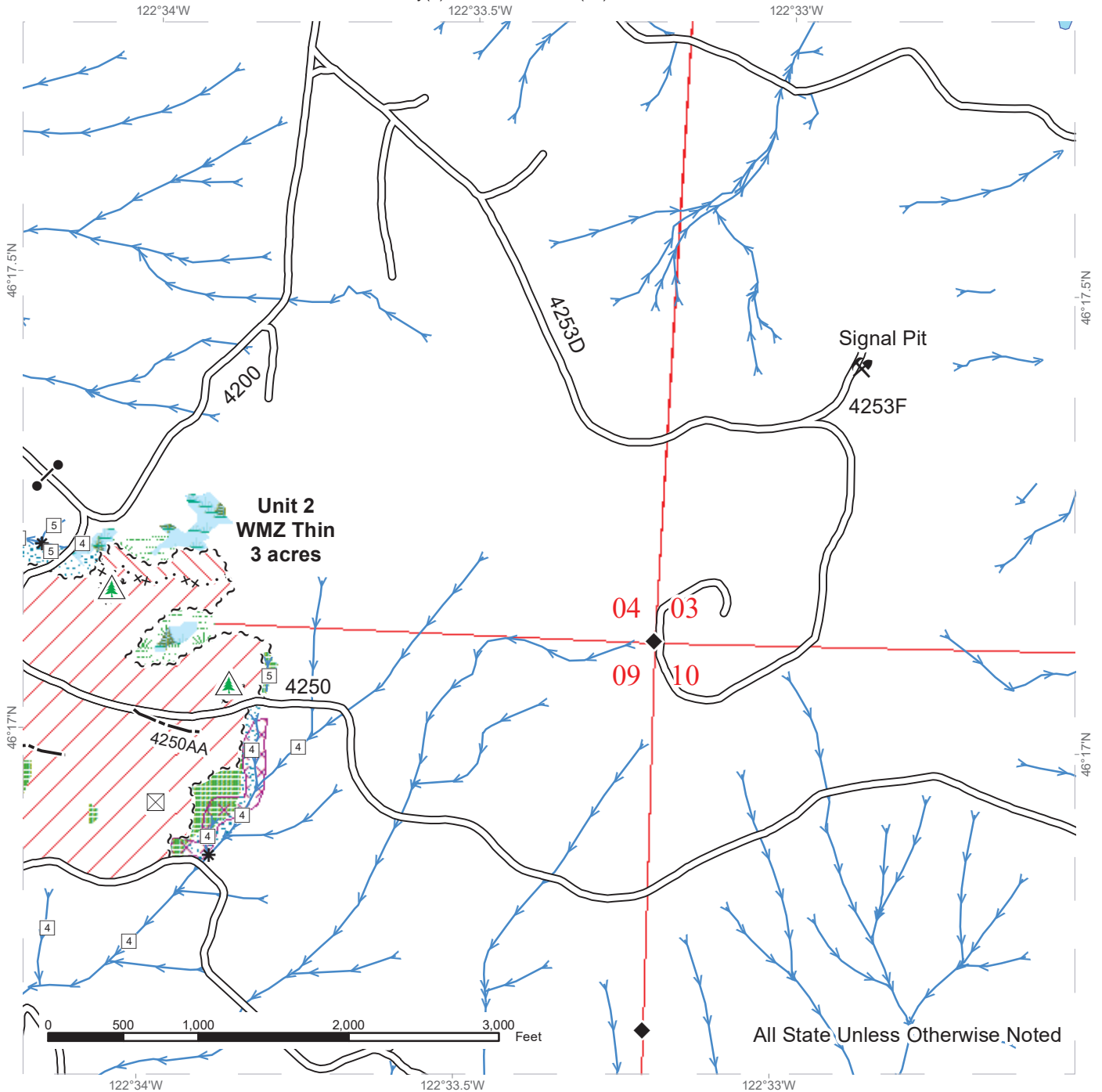
Variable Retention Harvest	Sale Boundary Tags	Streams
WMZ Thinning	Special Mgmt Area	Survey Monument
Leave Tree Area	Leave Tree Tags	Non-Tradeable Leave Trees
Riparian Mgt Zone	Property Line	Bald
Forested Wetland	Flag Line	Gates (Unlocked)
Wetland Mgt Zone	Existing Roads	
Potentially Unstable Slopes	Optional Construction	



TIMBER SALE MAP

SALE NAME: TRUMPET VRH RMZ SORTS
AGREEMENT #: 30-098366
TOWNSHIP(S): T09R02E
TRUST(S): Common School and Indemnity(3), Scientific School (10)

REGION: Pacific Cascade Region
COUNTY(S): COWLITZ
ELEVATION RGE: 1,918 - 2,765 ft.



All State Unless Otherwise Noted

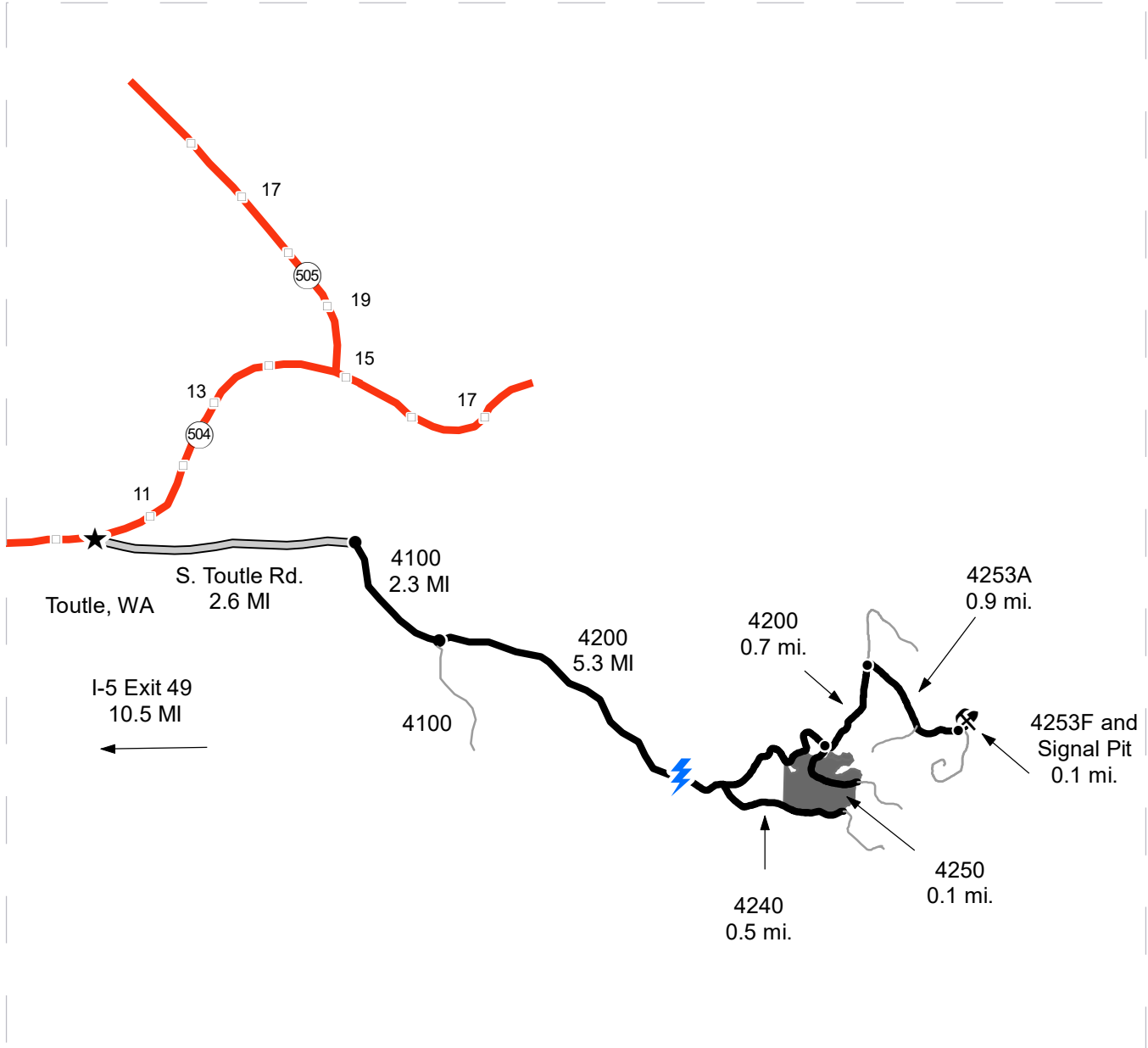
Variable Retention Harvest	Sale Boundary Tags	Non-Tradeable Leave Trees
WMZ Thinning	Special Mgmt Area	Rock Pit
Leave Tree Area	Leave Tree Tags	Bald
Riparian Mgt Zone	Existing Roads	Gates (Unlocked)
Forested Wetland	Optional Construction	
Wetland Mgt Zone	Streams	
Potentially Unstable Slopes	Survey Monument	



DRIVING MAP

SALE NAME: TRUMPET VRH RMZ SORTS
AGREEMENT#: 30-098366
TOWNSHIP(S): T09R02E
TRUST(S): Common School and Indemnity(3), Scientific School(10)

REGION: Pacific Cascade Region
COUNTY(S): COWLITZ
ELEVATION RGE: 1,918 - 2,765 ft.



Map may not be to scale

	Timber Sale Unit
	Haul Route
	Other Road
	Highway
	Town
	Distance Indicator
	Rock Pit

DRIVING DIRECTIONS:

From 1-5 Exit 49 follow SR 504 east to Toutle for 10.5 miles.
 From Toutle, turn right onto South Toutle Rd and follow for 2.6 miles.
 Turn right on to the 4100 gravel road and follow for 2.3 miles.
 Veer left and then right onto the 4200 and follow for 5.3 miles.
 Turn right to remain on the 4250.
 Unit begins almost immediately upon entering the 4250 road.

Signal Pit: Continue past the 4250 for 0.7 miles along the 4200 road.
 Turn right onto the 4253A and follow for 0.9 miles.
 Turn left onto the 4253F, arrive at the Signal Pit.





TIMBER NOTICE OF SALE

SALE NAME: Q PHELPS CREEK THIN

AGREEMENT NO: 30-88241

AUCTION: September 26, 2019 starting at 10:00 a.m., **COUNTY:** Klickitat
Pacific Cascade Region Office, Castle Rock, WA

SALE LOCATION: Sale located approximately 6 miles north of Husum, Washington

PRODUCTS SOLD AND SALE AREA: All timber as described in the Schedule A thinning prescription in 3 timber sale units bounded by timber sale boundary tags and pink flagging on part(s) of Sections 2 and 3 all in Township 4 North, Range 10 East, Sections 27, 28, 33 and 34 all in Township 5 North, Range 10 East, W.M., containing 348 acres, more or less.

CERTIFICATION: This sale is certified under the Sustainable Forestry Initiative® program Standard (cert no: PwC-SFIFM-513)

ESTIMATED SALE VOLUMES AND QUALITY:

Species	Avg DBH	Ring Count	Total MBF	Total \$/MBF	MBF by Grade					
					3P	SM	1S	2S	3S	4S
Douglas fir	15	12	3,282	\$255.00				643	2,117	522
Grand fir	16		84	\$140.00				21	51	12
Sale Total			3,366	25,889						

MINIMUM BID: \$255/MBF (est. value \$848,000.00) **BID METHOD:** Sealed Bids

PERFORMANCE SECURITY: \$100,000.00 **SALE TYPE:** MBF Scale

EXPIRATION DATE: December 5, 2021 **ALLOCATION:** Export Restricted

BIDDABLE SPECIES: Douglas fir

BID DEPOSIT: \$84,800.00 or Bid Bond. Said deposit shall constitute an opening bid at the appraised price.

HARVEST METHOD: Falling and Yarding will not be permitted from November 1 to April 30 unless authorized in writing by the Contract Administrator.

ROADS: 7.22 stations of required reconstruction. 16.88 stations of optional construction. 42.81 stations of required prehaul maintenance. 7.22 stations of abandonment. Road building with significant cuts and fills; construction and reconstruction in accordance with construction stakes. Road construction will not be permitted from November 1 to April 30 unless authorized in writing by the Contract Administrator. The hauling of forest products will not be permitted from November 1 to April 30 unless authorized in writing by the Contract Administrator.

ACREAGE DETERMINATION

CRUISE METHOD: Trimble GPS traverse. Variable plot cruise to the Schedule A prescription.

FEES: \$44,600.00 is due on day of sale. \$9.00 per MBF is due upon removal. These are in addition to the bid price.



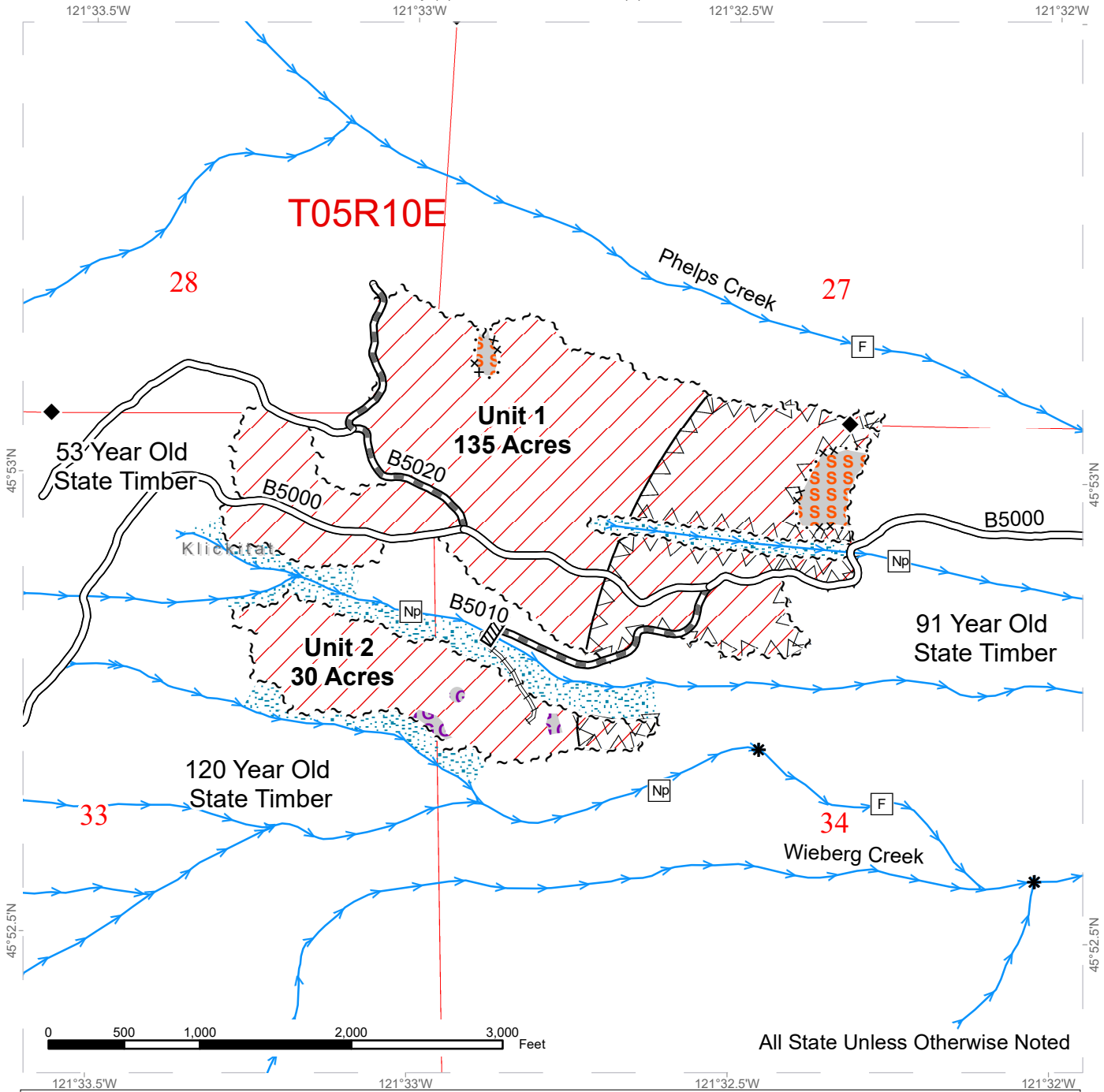
TIMBER NOTICE OF SALE

SPECIAL REMARKS: There is a timing restriction from March 1st - August 31st prohibiting harvest and road construction operations on approximately 50 acres of the lower east end of Units 1 and 2 and on approximately 5 acres on the north edge of Unit 3.

TIMBER SALE MAP

SALE NAME: PHELPS CREEK
AGREEMENT #: 30-088241
TOWNSHIP(S): T4R10E, T5R10E
TRUST(S): Common School and Indemnity (3), State Forest Transfer (1)

REGION: Southeast Region
COUNTY(S): Klickitat
ELEVATION RGE: 1000'-2560'



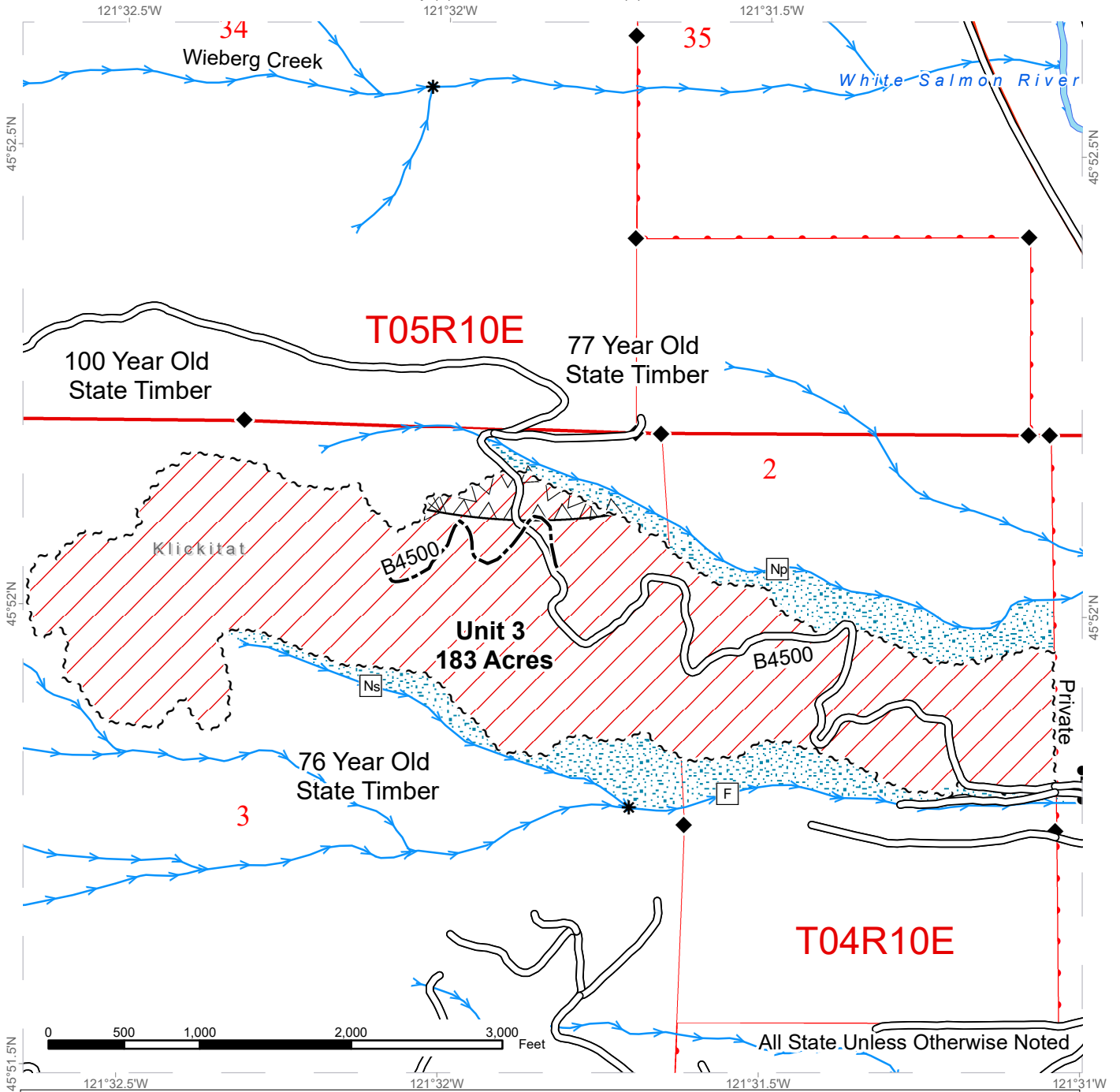
◆ Survey Monument	▨ Timber Sale Area	□ Sections
□ Stream Type	▩ Timing Restriction	▭ Townships
* Stream Type Break	GGG Gap	— Existing Roads
▨ Culvert	••• Riparian Management Zone	▬ Required Pre-Haul Maintenance
~ ~ ~ Sale Boundary Tags	SSS Skip	▬ Required Reconstruction
••• x x Special Management Area Tags		
→ Streams		



TIMBER SALE MAP

SALE NAME: PHELPS CREEK
AGREEMENT #: 30-088241
TOWNSHIP(S): T4R10E, T5R10E
TRUST(S): Common School and Indemnity (3), State Forest Transfer (1)

REGION: Southeast Region
COUNTY(S): Klickitat
ELEVATION RGE: 1000'-2560'



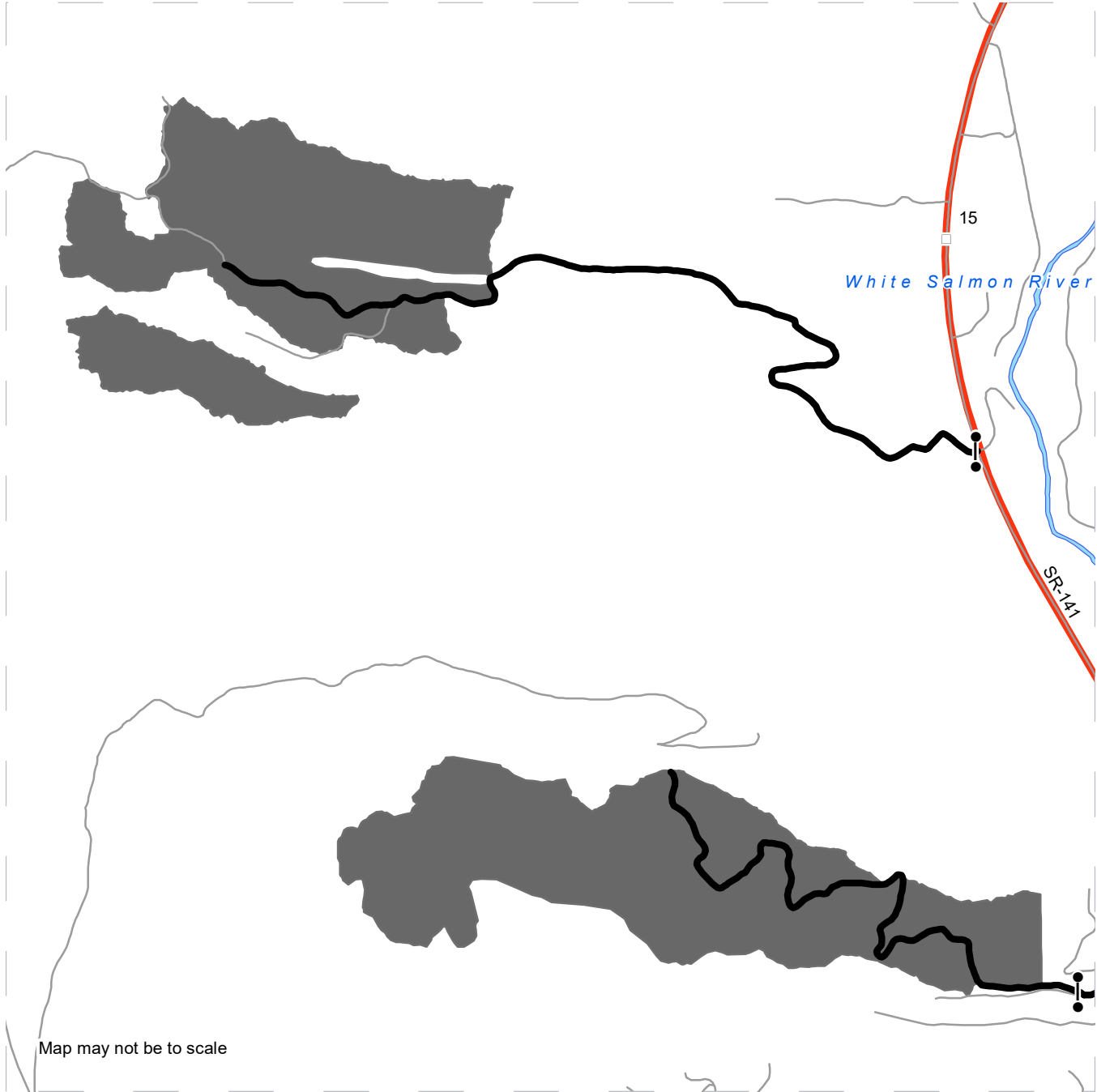
◆ Survey Monument	▨ Timber Sale Area	□ Sections
□ Stream Type	▨ Timing Restriction	▨ Townships
* Stream Type Break	▨ Riparian Management Zone	▨ DNR Managed Lands
~ ~ ~ Sale Boundary Tags		— Existing Roads
→ Streams		- - - Optional Construction



DRIVING MAP

SALE NAME: Q PHELPS CREEK
AGREEMENT#: 30-088241
TOWNSHIP(S): T4R10E, T5R10E
TRUST(S): Common School and Indemnity (3), State Forest Transfer (1)

REGION: Southeast Region
COUNTY(S): Klickitat
ELEVATION RGE: 1000-2560



- Timber Sale Unit
- Haul Route
- Other Road
- Milepost Markers
- Gate

DRIVING DIRECTIONS:

Unit 1 and 2
 Approximately 1.99 miles north of BZ corners on SR 141 turn left onto the B7000, MP 14.54 on SR 141. The Unit 1 is approximately 1.54 miles west of SR 141.

Unit 3
 Approximately 0.93 miles north of BZ corners on SR 141 turn left onto Gross' Road, MP 13.48 on SR141. The westernmost portion of Unit 3 is approximately 0.5 miles west of SR 141.





TIMBER NOTICE OF SALE

SALE NAME: CANNECTIVITY

AGREEMENT NO: 30-98244

AUCTION: September 26, 2019 starting at 10:00 a.m., COUNTY: Pacific Pacific Cascade Region Office, Castle Rock, WA

SALE LOCATION: Sale located approximately 12 miles southeast of Menlo

PRODUCTS SOLD AND SALE AREA:

All timber, except trees marked with blue paint, trees bound out by yellow "Leave Tree Area" tags, all down timber existing 10 years prior to day of sale, bound by the following: White "Timber Sale Boundary" tags with pink harvest boundary flagging, HM-Mainline and HM-2800 in Units 1 and 2; White "Timber Harvest Boundary" tags with pink harvest boundary flagging and the HM mainline in Units 3, 4, and 5; White "Timber Harvest Boundary" tags with pink harvest boundary flagging, HM mainline and HM-3100 in Unit 6; White "Timber Harvest Boundary" tags with pink harvest boundary flagging, HM mainline and HM-3200 in Unit 7; All timber bound by Orange "Right of Way" tags with orange paint and orange flagging in Unit 8(ROW) on part(s) of Sections 27, 28, 33 and 34 all in Township 13 North, Range 6 West, W.M., containing 111 acres, more or less.

CERTIFICATION: This sale is certified under the Sustainable Forestry Initiative® program Standard (cert no: PwC-SFIFM-513)

ESTIMATED SALE VOLUMES AND QUALITY:

Table with columns: Species, Avg DBH, Ring Count, Total MBF, and MBF by Grade (1P, 2P, 3P, SM, 1S, 2S, 3S, 4S, UT). Rows include Douglas fir, Hemlock, Red alder, Spruce, Silver fir, Maple, Red cedar, and Sale Total.

MINIMUM BID: \$740,000.00 BID METHOD: Sealed Bids

PERFORMANCE SECURITY: \$100,000.00 SALE TYPE: Lump Sum

EXPIRATION DATE: October 31, 2021 ALLOCATION: Export Restricted

BID DEPOSIT: \$74,000.00 or Bid Bond. Said deposit shall constitute an opening bid at the appraised price.

HARVEST METHOD: Cable, and Shovel. This sale is estimated to be 40% cable/cable assist, 60% shovel. Shovel yarding is restricted to slopes of 40% or less. For additional harvest requirements, refer to the H-140 clause in the contract. Shovel Yarding will not be permitted from November 1 to April 30 unless authorized in writing by the Contract Administrator.



TIMBER NOTICE OF SALE

ROADS: 29.30 stations of optional construction. 548.50 stations of required prehaul maintenance. 548.50 stations of required pre-haul maintenance. Rock used in accordance with the quantities on the ROCK LIST may be obtained from the P&E Extension Pit located in Sec 29, T13N, R06W, W.M. Rock used in accordance with the quantities on the ROCK LIST may be obtained from any commercial source at the Purchaser's expense subject to written approval from Contract Administrator. Road construction will not be permitted from November 1 to April 30 unless authorized in writing by the Contract Administrator. The hauling of forest products will not be permitted from November 1 to April 30 unless authorized in writing by the Contract Administrator.

ACREAGE DETERMINATION

CRUISE METHOD: The sale acres were determined by GPS. The sale area was cruised using a variable plot cruise method.

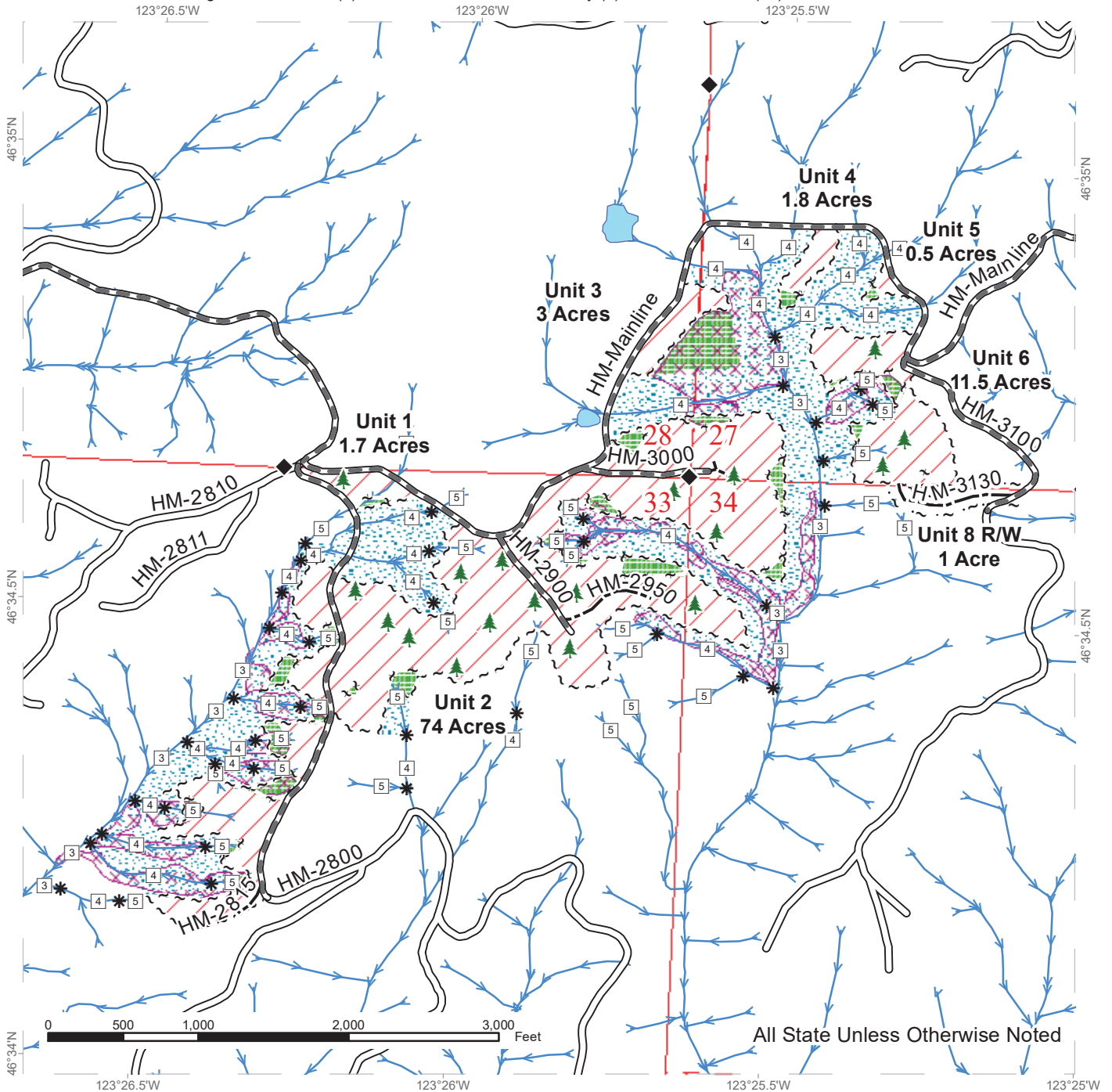
FEES: \$59,000.00 is due on day of sale. \$9.00 per MBF is due upon removal. These are in addition to the bid price.

SPECIAL REMARKS: This sale contains an estimated 553 MBF of high quality DF 2 saw, 132 MBF of high quality DF 3 saw, 157 MBF of high quality WH 2 saw, 129 MBF of high quality WH 3 saw, and 20 MBF of high quality SF 2 saw, derived from the cruise. See cruise for details. See driving map for gate locations. PCP 1-1 gate keys may be obtained from the Pacific Cascade Region office.

TIMBER SALE MAP

SALE NAME: CANNECTIVITY
AGREEMENT #: 30-098244
TOWNSHIP(S): T13R6W
TRUST(S): Agricultural School (4), Common School and Indemnity (3), Scientific School (10)

REGION: Pacific Cascade Region
COUNTY(S): Pacific
ELEVATION RGE: 1040-1480



All State Unless Otherwise Noted

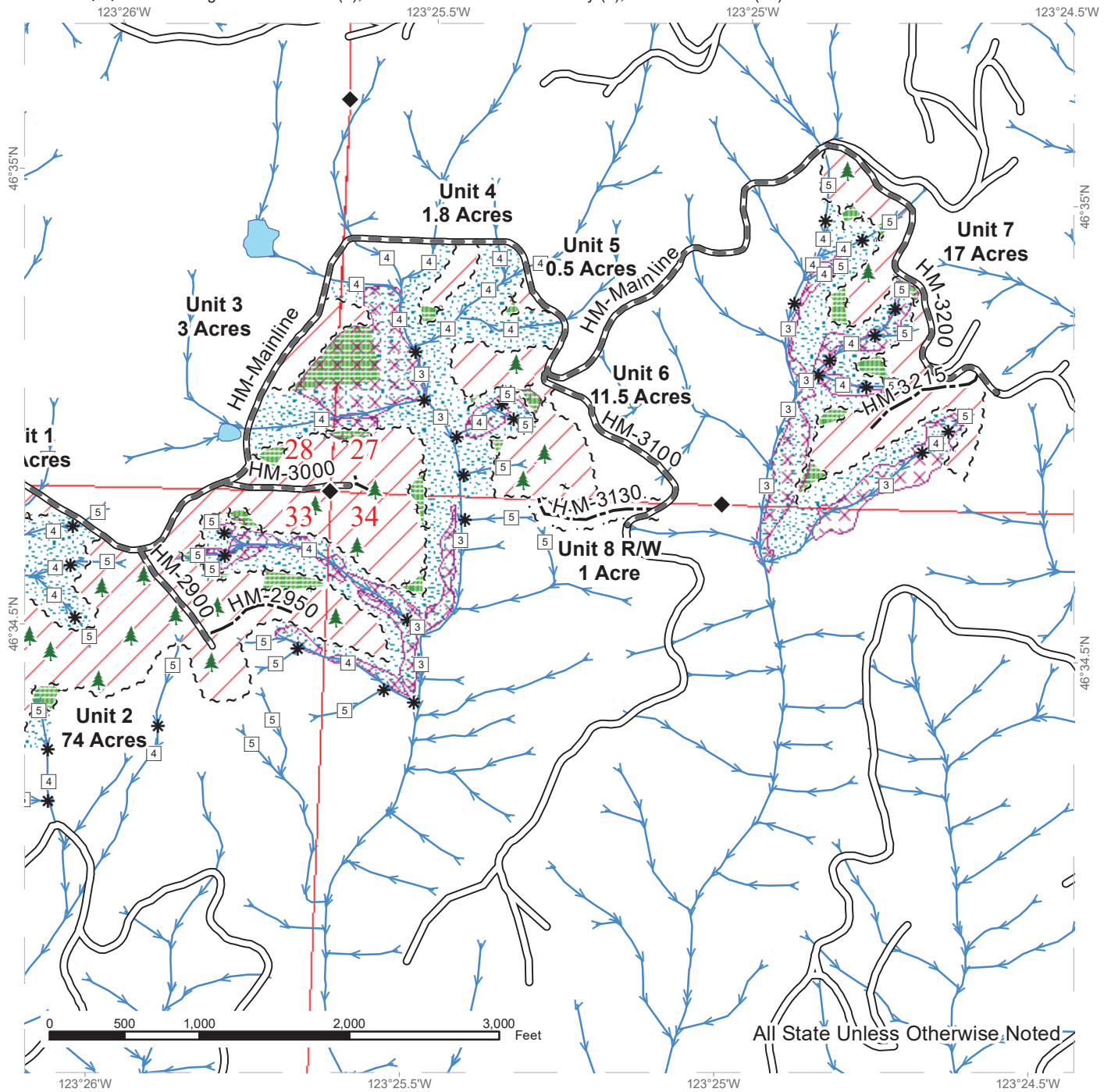
Variable Retention Harvest	Existing Roads	Streams
Leave Tree Area	Required Pre-Haul Maintenance	Stream Type
Riparian Mgt Zone	Optional Construction	Stream Type Break
Potentially Unstable Slopes		Survey Monument
Sale Boundary Tags		Leave Tree
Leave Tree Tags		
Right of Way Tags		



TIMBER SALE MAP

SALE NAME: CANNECTIVITY
AGREEMENT #: 30-098244
TOWNSHIP(S): T13R6W
TRUST(S): Agricultural School (4), Common School and Indemnity (3), Scientific School (10)

REGION: Pacific Cascade Region
COUNTY(S): Pacific
ELEVATION RGE: 1040-1480

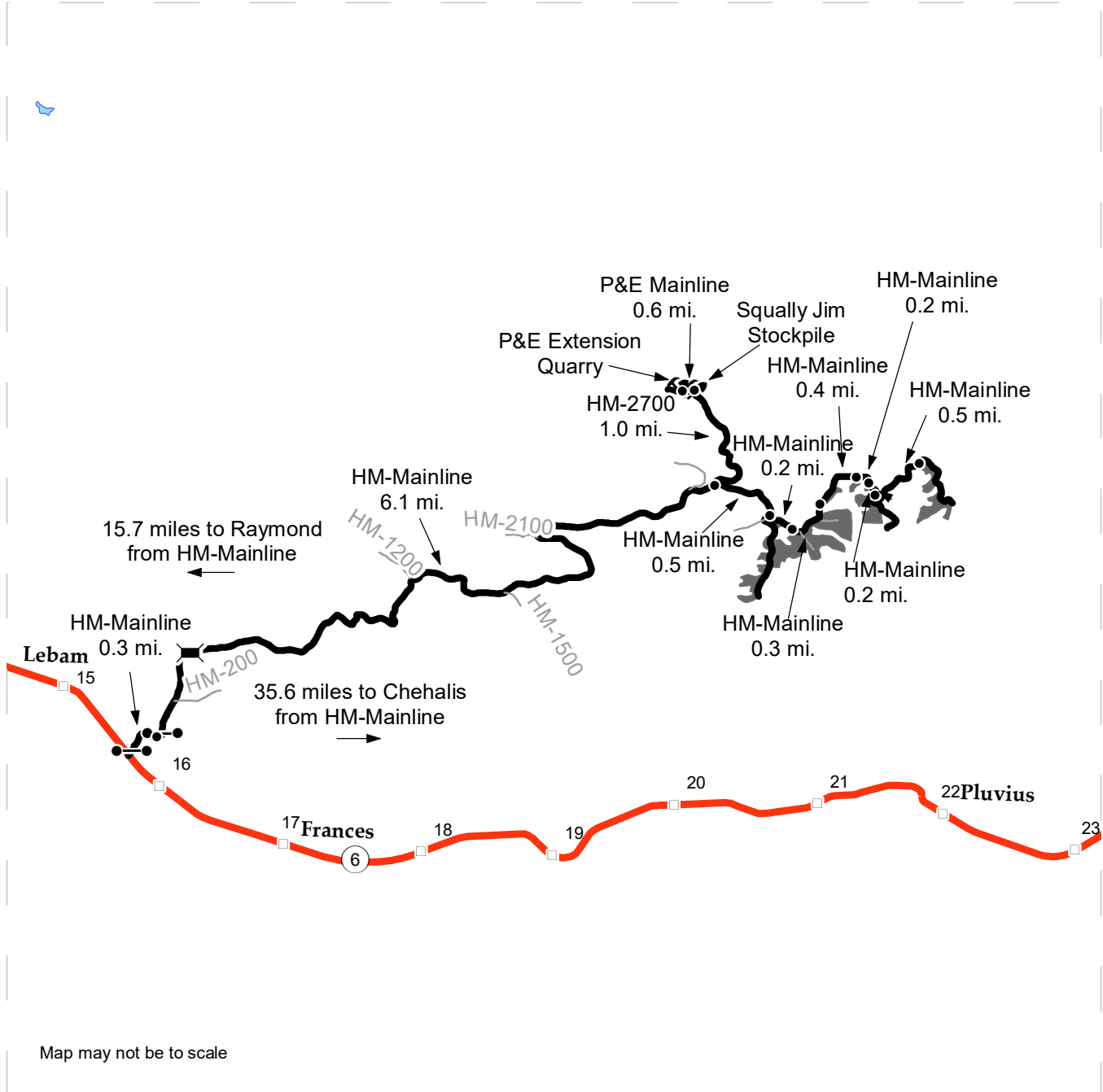


	Variable Retention Harvest		Existing Roads		Streams
	Leave Tree Area		Required Pre-Haul Maintenance		Stream Type
	Riparian Mgt Zone		Optional Construction		Stream Type Break
	Potentially Unstable Slopes				Leave Tree
	Sale Boundary Tags				
	Leave Tree Tags				
	Right of Way Tags				

DRIVING MAP

SALE NAME: CANNECTIVITY
AGREEMENT#: 30-098244
TOWNSHIP(S): T13R6W
TRUST(S): Agricultural School (4), Common School and Indemnity (3), Scientific School (10)

REGION: Pacific Cascade Region
COUNTY(S): Pacific
ELEVATION RGE: 1040-1480



Map may not be to scale

- Timber Sale Unit
- Haul Route
- Other Road
- Milepost Markers
- Highway
- Bridge
- Distance Indicator
- Gate (No Lock)
- Rock Pit

DRIVING DIRECTIONS:

Units: Between MM 15 and 16 on Highway 6, turn onto the Halfmoon(HM)-Mainline at "Globe Farm". Go through unlocked farm gate and continue for 0.3 miles to second unlocked farm gate. Drive 6.7 miles to Unit 1. Continue on the HM-Mainline for 0.2 miles to Unit 2. Continue on the HM-Mainline for 0.3 miles to Unit 3. Continue on the HM-Mainline for 0.4 miles to Unit 4. Continue on HM-Mainline for 0.2 miles to Unit 5. Continue on HM-Mainline for 0.2 miles to Unit 6. Continue on HM-Mainline for 0.5 miles to Unit 7.

Rock Quarry: From the HM-Mainline and HM-2700 continue on the HM-2700 for 1.0 miles to reach Squally Jim Stockpile. Turn on to the P and E Mainline for 0.6 miles to P and E Extension Quarry.





TIMBER NOTICE OF SALE

SALE NAME: BUCKLE UP VRH WMZ Sorts

AGREEMENT NO: 30-98677 - 30-98690

AUCTION: September 25, 2019 starting at 10:00 a.m.
Northwest Region Office, Sedro Woolley, WA

COUNTY: Snohomish

SALE LOCATION: Sale located approximately 15 miles southeast of Granite Falls.

PRODUCTS SOLD

AND SALE AREA: All delivered forest products, except trees marked with blue paint on the bole and root collar and forest products tagged out by yellow leave tree area tags, from an area bounded by white timber sale boundary tags, adjacent young stands, and the CH-ML, CH-25, CH-20, and CH-2001 roads meeting the specifications described below meeting the specifications described below; on parts of Sections 20, 28, 29, and 30 all in Township 29 North, Range 8 East W.M., containing 141 acres, more or less.

MINIMUM BID AND ESTIMATED LOG VOLUMES:

Agreement #	Sort #	Species and Sort Specifications	Average Log Length	Estimated Volume		Tons Per MBF	Minimum Bid Delivered Prices		Total Appraised Value	Bid Deposit
				Mbf	Tons		\$/mbf	\$/Ton		
98677	01	DF HQ 12+	32	309	1607	5.2	\$700.00		\$216,300.00	\$21,630.00
98678	02	DF Sawlog 20"+	32	755	3700	4.9	\$600.00		\$453,000.00	\$45,300.00
98679	03	DF Sawlog 12"-19"	26	996	5578	5.6	\$600.00		\$597,600.00	\$59,760.00
98680	04	DF Sawlog 5"-11"	28	139	1001	7.2	\$525.00		\$72,975.00	\$7,297.50
98681	05	WW Sawlog 12"+	32	1733	11264	6.5	\$430.00		\$745,190.00	\$74,519.00
98682	06	WW Sawlog 5"-11"	26	1495	10914	7.3	\$430.00		\$642,850.00	\$64,285.00
98683	07	RC Sawlog 5"+	28	372	2158	5.8	\$1,050.00		\$390,600.00	\$39,060.00
98684	08	DF Pole 45'+	N/A	175	1015	5.8	\$850.00		\$148,750.00	\$14,875.00
98685	09	RC Pole 45'+	N/A	100	580	5.8	\$1,150.00		\$115,000.00	\$11,500.00
98686	10	RA Sawlog 5"+	24	10	65	6.5	\$450.00		\$4,500.00	\$450.00
98687	11	BM Sawlog 5"+	24	37	266	7.2	\$375.00		\$13,875.00	\$1,387.50
98688	12	CW Sawlog 5"+	N/A	28	202	7.2	\$18.00		\$504.00	\$363.60
98689	13	Conifer Utility	N/A	204	1836	9		\$24.00	\$44,064.00	\$4,406.40
98690	14	Hardwood Utility (RA/MA)	N/A	21	189	9		\$24.00	\$4,536.00	\$453.60

Totals: **6374 40375** **\$3,452,876.00**

CERTIFICATION: This sale is certified under the Sustainable Forestry Initiative® program Standard (cert no: PwC-SFIFM-513)



TIMBER NOTICE OF SALE

BID METHOD: Sealed Bids **UNIT OF MEASURE:** MBF Scale/Tonnage Scale

EXPIRATION DATE: June 18, 2020 **ALLOCATION:** Export Restricted

PAYMENT SECURITY: To be determined by the State as described in Clause P-045.2 of the Purchaser’s Contract.

BIDDING PROCEDURES: A separate sealed bid and envelope must be submitted for each log sort. Prospective Purchasers may bid on any or all log sorts. On the day of sale the Purchaser must bring their bid deposit up to 10% of their total bid price. Complete bidding procedures and auction information may be obtained from the Northwest Region Office in Sedro Woolley WA. Phone number (360)856-3500.

TIMBER EXCISE TAX: Purchaser must pay the forest excise taxes associated with the log sorts delivered to them. The tax rate for this sale is 4.2 %. Taxable Stumpage = Total Delivered Value – (Harvest Cost + Estimated Haul Cost + ARRF). For more information contact the Department of Revenue, Forest Tax Section at 1-800-548-8829.

Use the following rates for estimating taxable stumpage:

Harvest Cost = \$0.00 per MBF for sorts 08 and 09, \$0.00 per MBF for sorts 01, 02, 03, 04, 05, 06, 07, 10, 11 and 12 and \$12.00 per Ton for sorts 13 and 14.

Hauling Services Payment Rate per Ton
= (Base Rate + Mileage Rate) x (Contractor's hauling bid factor)

Base Rate = \$2.35 per ton

Mileage Rate = ((\$0.16 x C miles) + (\$0.11 x A miles)) x Fuel Index Factor

ARRF = \$0.00 per MBF for sorts 13 and 14 and \$26.00 per MBF for sorts 01, 02, 03, 04, 05, 06, 07, 08, 09, 10, 11 and 12.

Note: To calculate ARRF rates per ton use the tons\mbf conversion factor in the table above.

CONFIRMATION: Each sort is subject to confirmation following auction. Sorts will not be confirmed until at least 10 days after auction. Final contract award is contingent upon the State’s haul cost analysis. Actual haul route may vary and is subject to change at the State’s discretion.

SPECIAL REMARKS: The successful Purchaser(s) will be required to purchase logs from the sale area upon delivery to their location specified in the bid submitted. Logs will be delivered to the Purchaser’s delivery location by the State’s contract harvester. Purchaser is responsible for weighing and scaling costs. All tonnage loads will be weighed and all mbf loads will be scaled at State approved locations. The State reserves the right to determine where logs are authorized to be scaled and weighed.



TIMBER NOTICE OF SALE

*Note: Harvesting services bid opening is tentatively scheduled for 08/06/19, which will establish the Contractor's harvest rate and the Contractor's hauling bid factor. Fuel Index Factor is indexed quarterly by the State, initial value is 1.0.

Weighted average C-miles = 3.4.

Log deliveries are anticipated to be no later than December 3, 2019 through May 18, 2020, but can commence as early as the contract effective date as well as later depending on weather and production of operations.

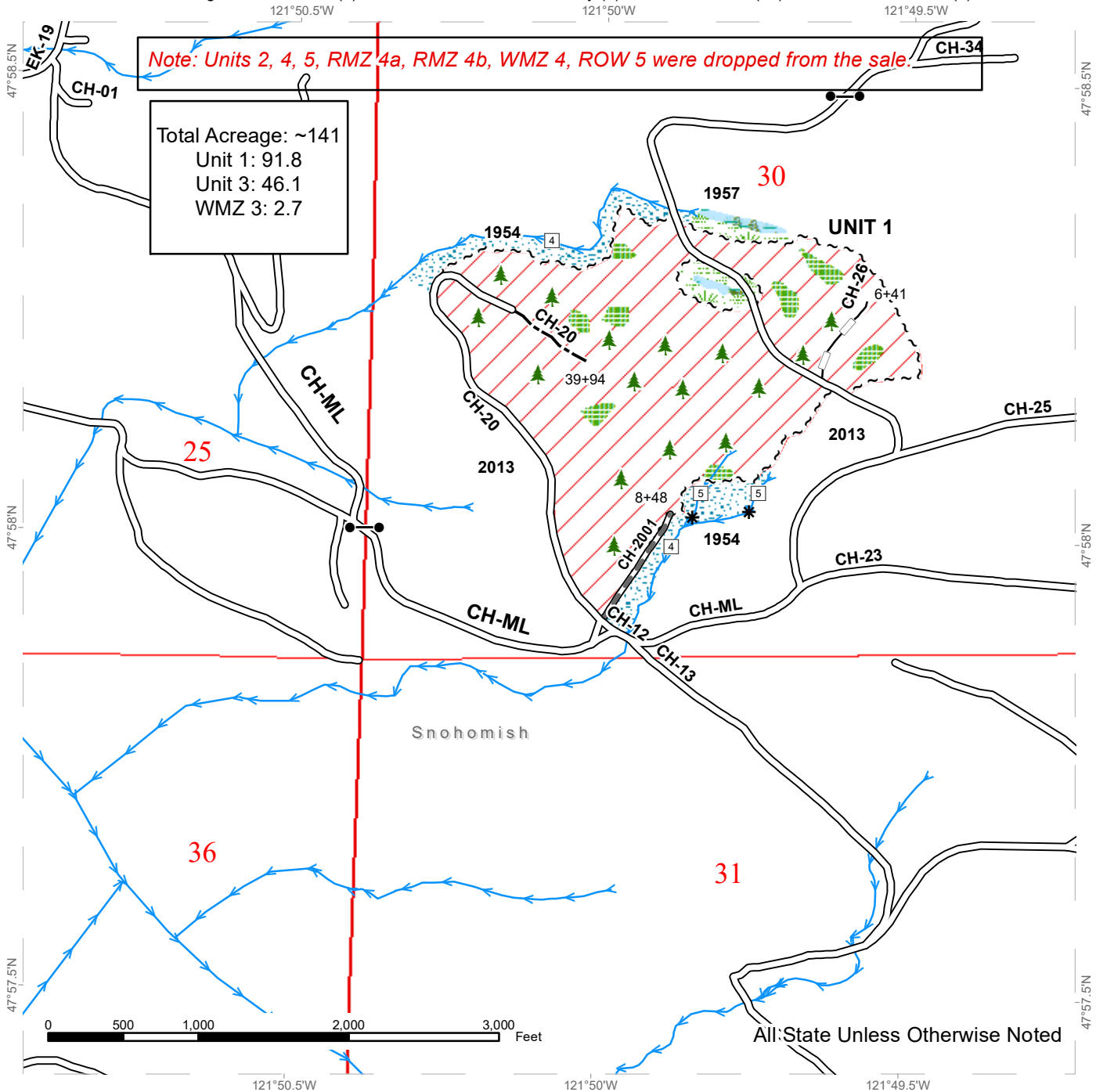
Sort 1 is being offered as HQ B, however the volume reported represents HQ A as cruised.

For more information regarding this log sort sale visit our web site: <http://www.dnr.wa.gov/programs-and-services/product-sales-and-leasing/timber-sales/timber-auction-packets>. If you have questions call Theresa Klepl at the Northwest Region Office at (360)856-3500 or Dave Richards at the Product Sales and Leasing Division Office in Olympia at (360)902-1365.

TIMBER SALE MAP

SALE NAME: BUCKLE UP
AGREEMENT #: 30-098676
TOWNSHIP(S): T29R8E
TRUST(S): Agricultural School (4), Common School and Indemnity (3), Scientific School (10), State Forest Transfer (1)

REGION: Northwest Region
COUNTY(S): Snohomish
ELEVATION RGE: 1050-2200



	Variable Retention Harvest		Existing Roads		Streams
	Leave Tree Area		Required Pre-Haul Maintenance		Stream Type
	Riparian Mgt Zone		Optional Construction		Stream Type Break
	Forested Wetland		Optional Reconstruction		Gate (F3)
	Wetland Mgt Zone		Sale Boundary Tags		Leave Tree Area <1/4-acre



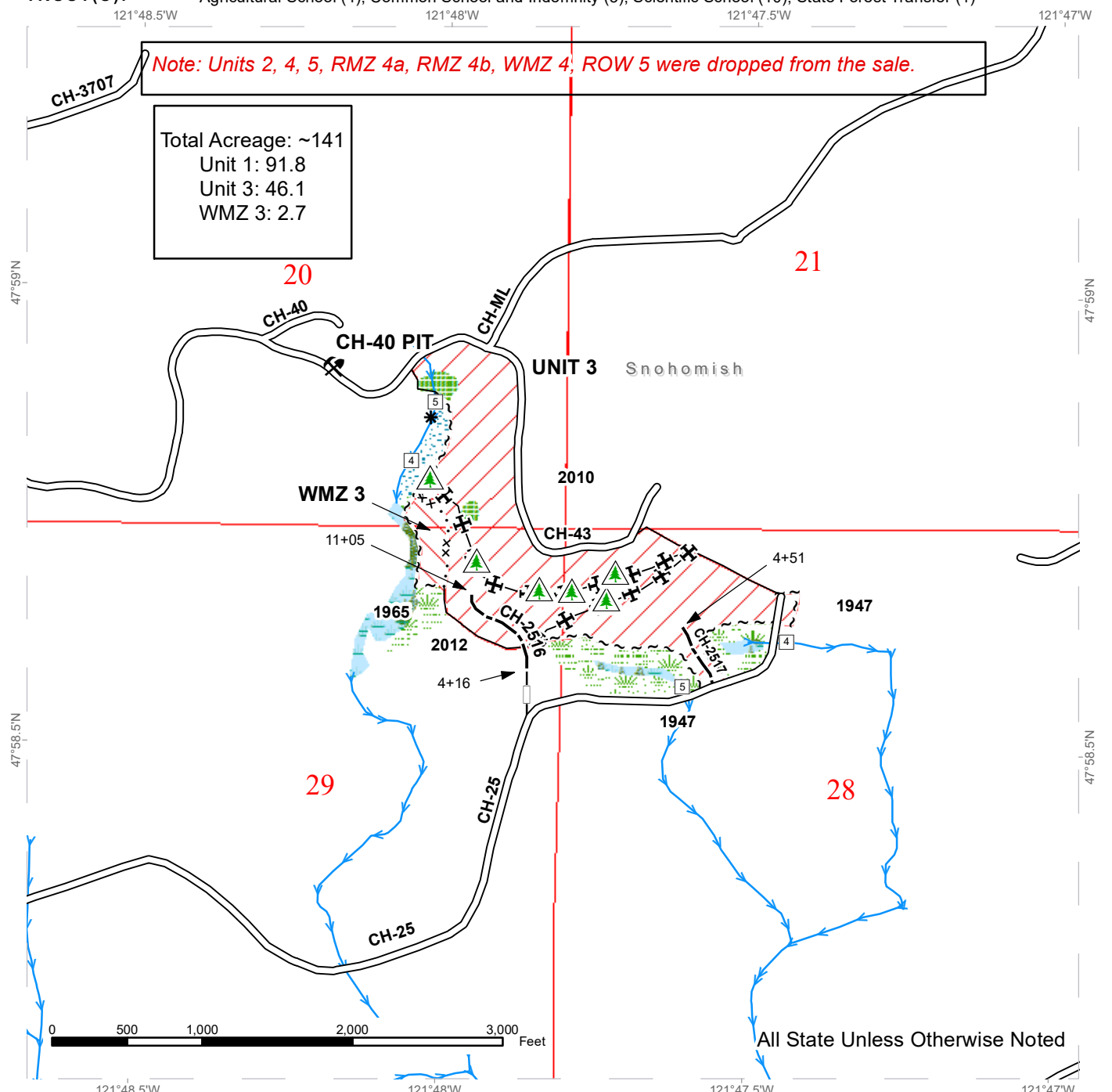
TIMBER SALE MAP

SALE NAME: BUCKLE UP
AGREEMENT #: 30-098676
TOWNSHIP(S): T29R8E
TRUST(S): Agricultural School (4), Common School and Indemnity (3), Scientific School (10), State Forest Transfer (1)

REGION: Northwest Region
COUNTY(S): Snohomish
ELEVATION RGE: 1050-2200

Note: Units 2, 4, 5, RMZ 4a, RMZ 4b, WMZ 4, ROW 5 were dropped from the sale.

Total Acreage: ~141
 Unit 1: 91.8
 Unit 3: 46.1
 WMZ 3: 2.7



All State Unless Otherwise Noted

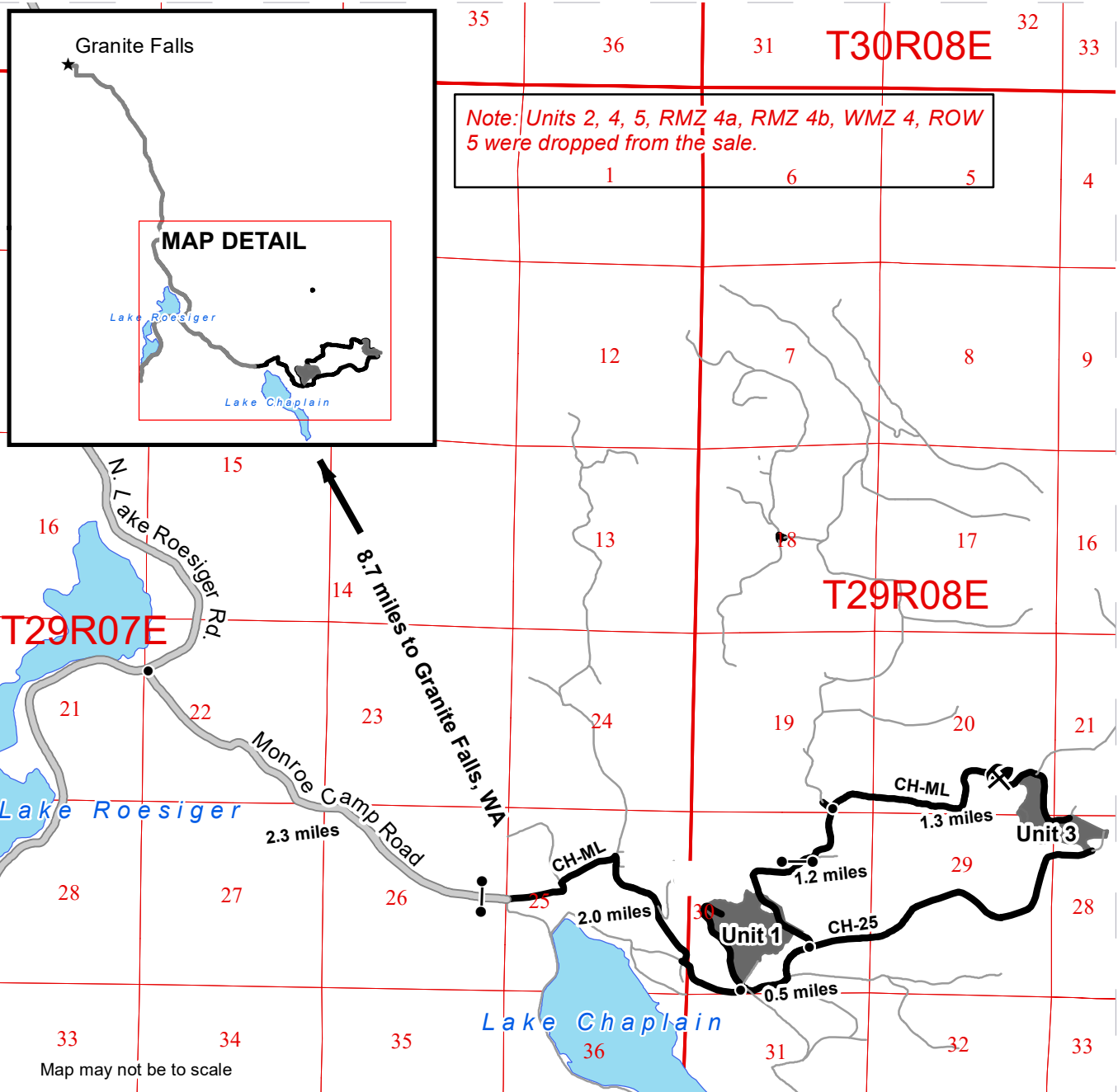
Variable Retention Harvest	Existing Roads	Streams
Variable Density Thinning	Optional Construction	Stream Type
Leave Tree Area	Optional Reconstruction	Stream Type Break
Riparian Mgt Zone	Sale Boundary Tags	Non-Tradeable Leave Trees
Forested Wetland	Special Mgmt Area	Operational Break
Wetland Mgt Zone	Timber Type Change	



DRIVING MAP

SALE NAME: BUCKLE UP
 AGREEMENT#: 30-098676
 TOWNSHIP(S): T29R8E
 TRUST(S): Agricultural School (4), Common School and Indemnity (3), Scientific School (10), State Forest Transfer (1)

REGION: Northwest Region
 COUNTY(S): Snohomish
 ELEVATION RGE: 1050-2200



Map may not be to scale

- Timber Sale Unit
- Haul Route
- Other Road
- County Road
- Distance Indicator
- Gate (F3)

DRIVING DIRECTIONS:

From Granite Falls, travel South on Menzel Lake Rd. for 6.5 miles. Continue straight on N. Lake Roesiger Rd. for 2.2 miles and turn left on Monroe Camp Rd. Travel 2.3 miles on Monroe Camp Rd. to a yellow gate (F3) and the start of the CH-ML. From the gate, travel 2.0 miles to the southern tip of **Unit 1** at the junction of the CH-20 and the CH-ML. From unit 1, continue on the CH-ML for .5 miles and keep left to continue on the CH-ML. Drive another 1.2 miles to the western edge of **Unit 2** at the junction of the CH-ML and the CH-37. From the junction of the CH-ML and the CH-37, continue on the CH-ML for 1.3 miles to **Unit 3**. From the CH-ML, CH-37 junction, travel .7 miles on the CH-37. Keep right on the EK-ML and travel 1.2 miles to the SE corner of **Unit 4**. From the SE corner of unit 5, continue .2 miles on the EK-ML and turn left at a sharp, climbing junction onto the EK-73 and travel .2 miles. Turn left on the EK-7302 and travel .2 miles to the eastern edge of **Unit 5**.





TIMBER NOTICE OF SALE

SALE NAME: Q JACKSON

AGREEMENT NO: 30-98225

AUCTION: September 24, 2019 starting at 10:00 a.m., COUNTY: Spokane
Northeast Region Office, Colville, WA

SALE LOCATION: Sale located approximately 8 miles southeast of Elk, WA

PRODUCTS SOLD AND SALE AREA: All green conifer species (excluding ponderosa pine and western red cedar) 7 inches and greater in diameter at breast height and all green ponderosa pine and western red cedar 8 inches and greater in diameter at breast height not banded with blue paint in Units 1 and 2 bounded by white timber sale boundary tags; and all right of way timber bounded by orange right of way boundary tags on part(s) of Sections 6 all in Township 28 North, Range 45 East, Sections 31 and 32 all in Township 29 North, Range 45 East, W.M., containing 210 acres, more or less.

CERTIFICATION: This sale is certified under the Sustainable Forestry Initiative® program Standard (cert no: PwC-SFIFM-513)

ESTIMATED SALE VOLUMES AND QUALITY:

Table with columns: Species, Avg Ring DBH, Ring Count, Total MBF, MBF by Grade (P, SM, 1S, 2S, 3S, 4S, 5S, 6S, UT)

MINIMUM BID: \$826,000.00 BID METHOD: Sealed Bids

PERFORMANCE SECURITY: \$100,000.00 SALE TYPE: Lump Sum

EXPIRATION DATE: October 1, 2021 ALLOCATION: Export Restricted

BID DEPOSIT: \$82,600.00 or Bid Bond. Said deposit shall constitute an opening bid at the appraised price.

HARVEST METHOD: Track skidder, Rubber-tired Skidder, and Ground-based Equipment. Falling and Yarding will not be permitted from February 1 to May 1 unless authorized in writing by the Contract Administrator due to spring breakup.

ROADS: 128.43 stations of required construction. 109.36 stations of required prehaul maintenance. Road construction will not be permitted from February 1 to May 1 unless authorized in writing by the Contract Administrator due to spring breakup. The hauling of forest products will not be permitted from February 1 to May 1 unless authorized in writing by the Contract Administrator due to spring breakup.



TIMBER NOTICE OF SALE

ACREAGE DETERMINATION

CRUISE METHOD: Acreage determined using GPS methods. Acreage shown above is net harvest acres in harvest units. Ponderosa pine and western red cedar: 8.0 - 17.5 inches dbh has a minimum top of 5.6 inch dib. All other species: 7.0 - 17.5 inches dbh has minimum top of 4.6 inch dib. All species 17.6 inches and greater dbh have a minimum top dib of 40% of dob at 16 feet or a 6 inch top whichever is greater. Utility wood: comprised of non-board foot volume and volume below the minimum top diameter of 5.0 inches or 40% of dob at 16 feet to a minimum of a 2.6 inch top.

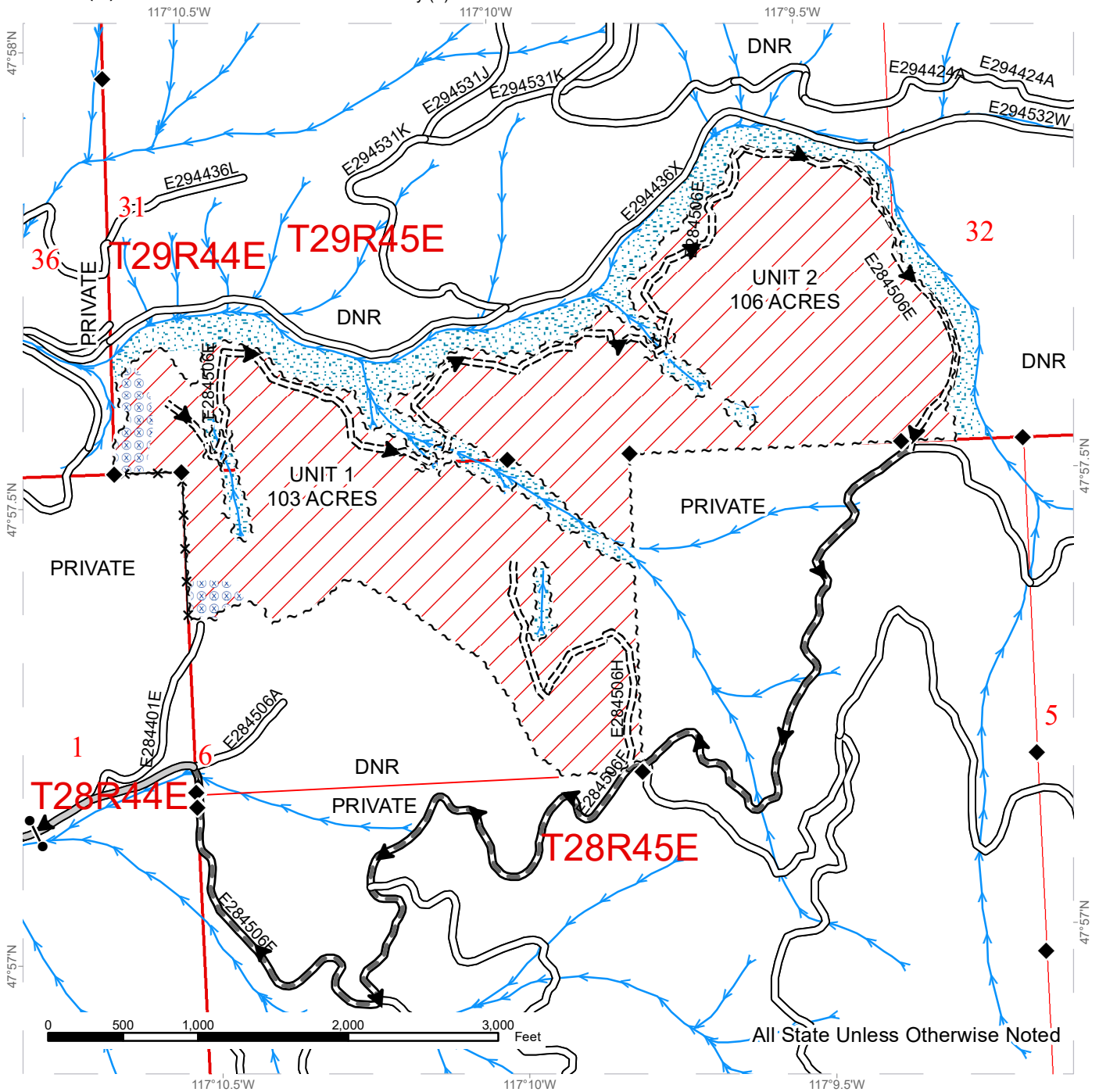
FEES: Within 10 days of day of sale, Purchaser shall provide a check payable to Inland Empire Paper Co. for 220 board feet of right of way timber at the purchaser's bid price. \$87,193.00 is due on day of sale. \$9.00 per MBF is due upon removal. These are in addition to the bid price.

SPECIAL REMARKS: A locked gate restricts access to the sale area. Contact the Northeast Region Office at (509) 684-7474 for access.

TIMBER SALE MAP

SALE NAME: Q JACKSON
AGREEMENT #: 30-098225
TOWNSHIP(S): T28R45E, T29R45E
TRUST(S): Common School and Indemnity (3)

REGION: Northeast Region
COUNTY(S): Spokane
ELEVATION RGE: 2600-3160



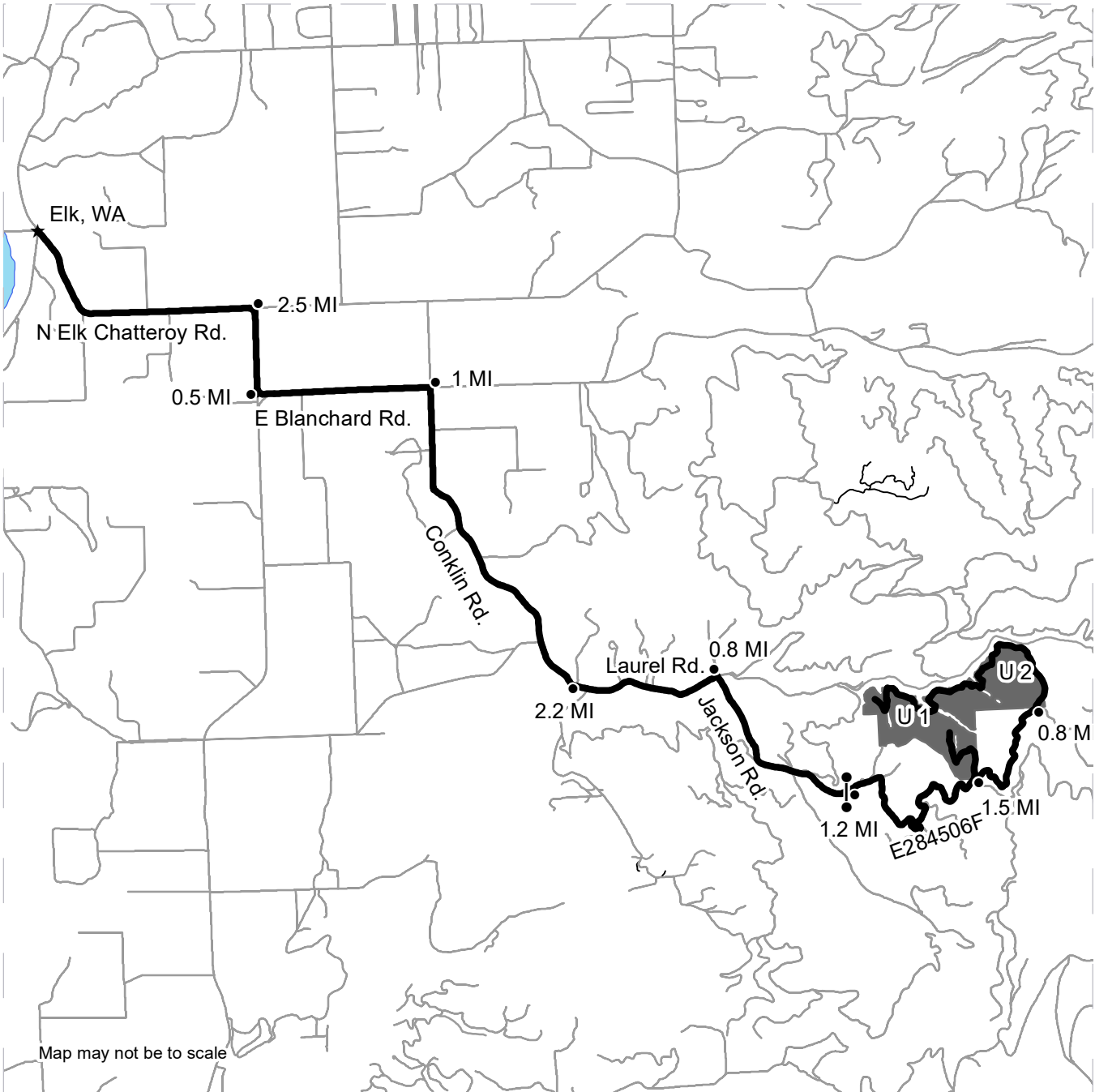
	Variable Retention Harvest		County Road		Streams
	Sale Boundary Tags		Existing Roads		Survey Monument
	Right of Way Tags = 1 Acre		Required Pre-Haul Maintenance		Gate (Locked)
	Public Land Survey Sections		Required Construction		Fence
	Riparian Mgt Zone		Haul_Route		
	Hazard Abatement Area				







DRIVING MAP

SALE NAME: JACKSON
AGREEMENT#: 30-098225
TOWNSHIP(S): T28R45E, T29R45E
TRUST(S): Common School and Indemnity (3)

REGION: Northeast Region
COUNTY(S): Spokane
ELEVATION RGE: 2600-3160



	Timber Sale Unit
	Haul Route
	Other Road
	Gate

DRIVING DIRECTIONS:

From Elk, WA travel south on N Elk Chatteroy Rd for 2.5 miles. Turn right to stay on N Elk Chatteroy Rd and travel 0.5 miles. Turn left onto E Blanchard Rd and travel 1.0 mile. Turn right onto N Conklin Rd and travel 2.2 miles. Continue straight onto E Laurel Rd and travel 0.8 miles. Turn right onto E Jackson Rd and continue 1.2 miles to the black gate. From the gate continue approximately 1.5 miles on the E284506F road to arrive at Unit 1. Travel another 0.8 miles on the E284506F road to arrive at Unit 2.





TIMBER NOTICE OF SALE

SALE NAME: Q BROOKS JUNCTION

AGREEMENT NO: 30-98161

AUCTION: September 24, 2019 starting at 10:00 a.m., Northeast Region Office, Colville, WA COUNTY: Stevens

SALE LOCATION: Sale located approximately 13 miles northwest of Colville, WA

PRODUCTS SOLD AND SALE AREA: All green conifer species (excluding ponderosa pine and western red cedar) 7 inches and greater in diameter at breast height; all green ponderosa pine and western red cedar 8 inches and greater in diameter at breast height not banded by blue paint, except for leave trees bounded by yellow leave tree area tags in Units 1, 2, 3, 4 and 5 bounded by white timber sale boundary tags; and all right of way timber bounded by orange right of way boundary tags on part(s) of Sections 8 all in Township 37 North, Range 39 East, Sections 36 all in Township 38 North, Range 38 East, W.M., containing 353 acres, more or less.

CERTIFICATION: This sale is certified under the Sustainable Forestry Initiative® program Standard (cert no: PwC-SFIFM-513)

ESTIMATED SALE VOLUMES AND QUALITY:

Table with columns: Species, Avg DBH, Ring Count, Total MBF, and MBF by Grade (P, SM, 1S, 2S, 3S, 4S, 5S, 6S, UT). Rows include Douglas fir, Ponderosa pine, Larch, Red cedar, and Sale Total.

MINIMUM BID: \$1,329,000.00 BID METHOD: Sealed Bids

PERFORMANCE SECURITY: \$100,000.00 SALE TYPE: Lump Sum

EXPIRATION DATE: October 31, 2021 ALLOCATION: Export Restricted

BID DEPOSIT: \$132,900.00 or Bid Bond. Said deposit shall constitute an opening bid at the appraised price.

HARVEST METHOD: Dozer, Track skidder, Rubber-tired Skidder, and Ground-based Equipment. Falling and Yarding will not be permitted from February 1 to May 31 unless authorized in writing by the Contract Administrator due to spring breakup in Units 4 and 5 and from February 1 to August 1 unless authorized in writing by the Contract Administrator due to spring breakup and beetle timing restrictions in Units 1, 2 and 3.

ROADS: 6.15 stations of required construction. 64.75 stations of required reconstruction. 4.95 stations of optional construction. 139.65 stations of required prehaul maintenance. 34.85 stations of optional prehaul maintenance. Road construction will not be permitted from November 15 to May 31 unless authorized in writing by the Contract Administrator due to frozen conditions and spring breakup. The hauling of forest products will not be permitted from February 1 to May 31 unless authorized in writing by the Contract Administrator due to spring breakup.



TIMBER NOTICE OF SALE

ACREAGE DETERMINATION

CRUISE METHOD: Acreage determined using GPS methods. Acreage shown above is net harvest acres in harvest units. Ponderosa pine and western red cedar: 8.0 - 17.5 inches dbh has a minimum top of 5.6 inch dib. All other species: 7.0 - 17.5 inches dbh has minimum top of 4.6 inch dib. All species 17.6 inches and greater dbh have a minimum top dib of 40% of dob at 16 feet or a 6 inch top whichever is greater. Utility wood: comprised of non-board foot volume and volume below the minimum top diameter of 5.0 inches or 40% of dob at 16 feet to a minimum of a 2.6 inch top.

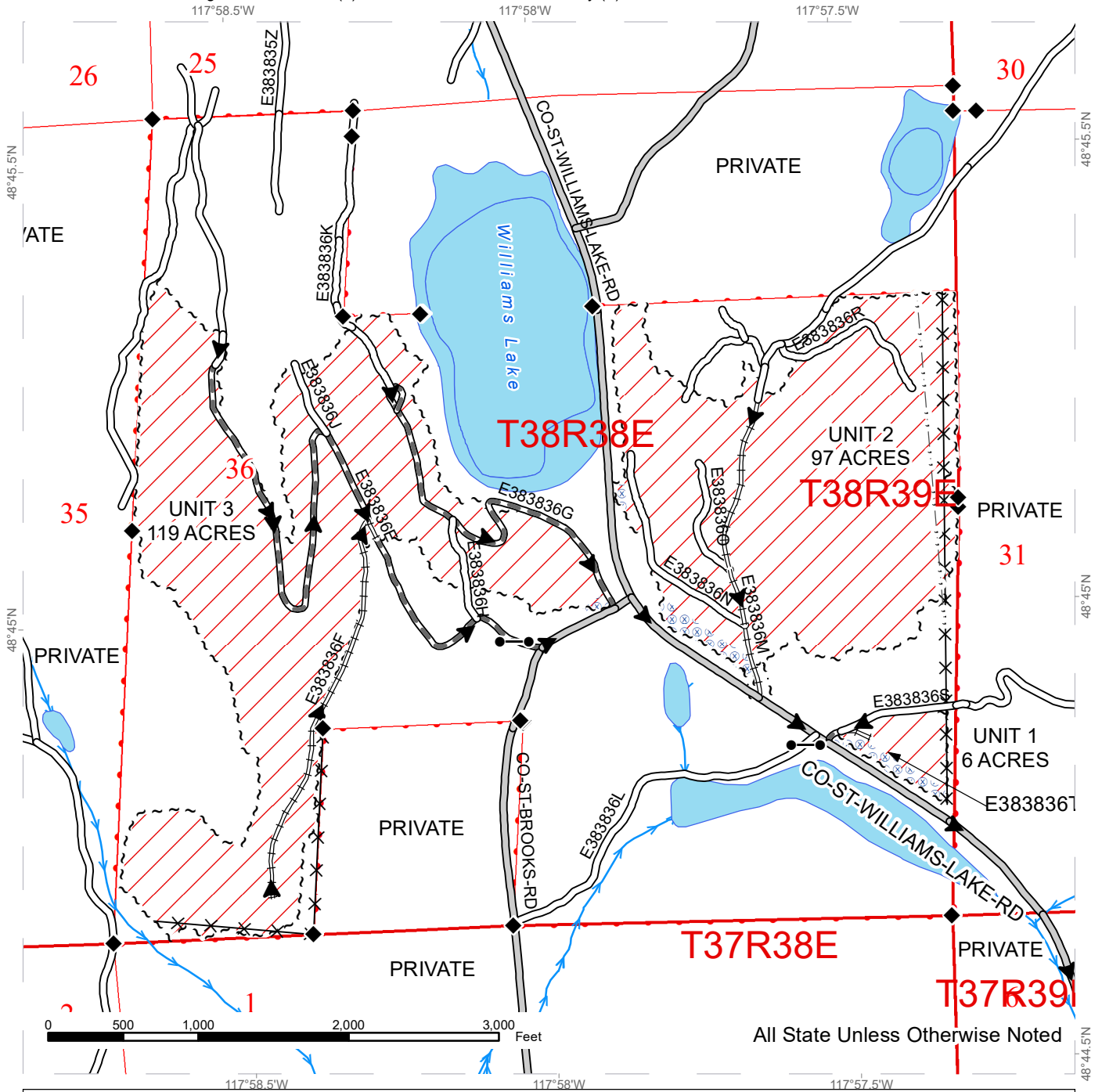
FEES: \$114,580.00 is due on day of sale. \$9.00 per MBF is due upon removal. These are in addition to the bid price.

SPECIAL REMARKS: Locked gate restricts access to Unit 4. Contact the Northeast Region Office at (509) 684-7474 for access.

TIMBER SALE MAP

SALE NAME: Q BROOKS JUNCTION
AGREEMENT #: 30-098161
TOWNSHIP(S): T37R39E, T38R38E
TRUST(S): Agricultural School (4), Common School and Indemnity (3)

REGION: Northeast Region
COUNTY(S): Stevens
ELEVATION RGE: 1960-3000



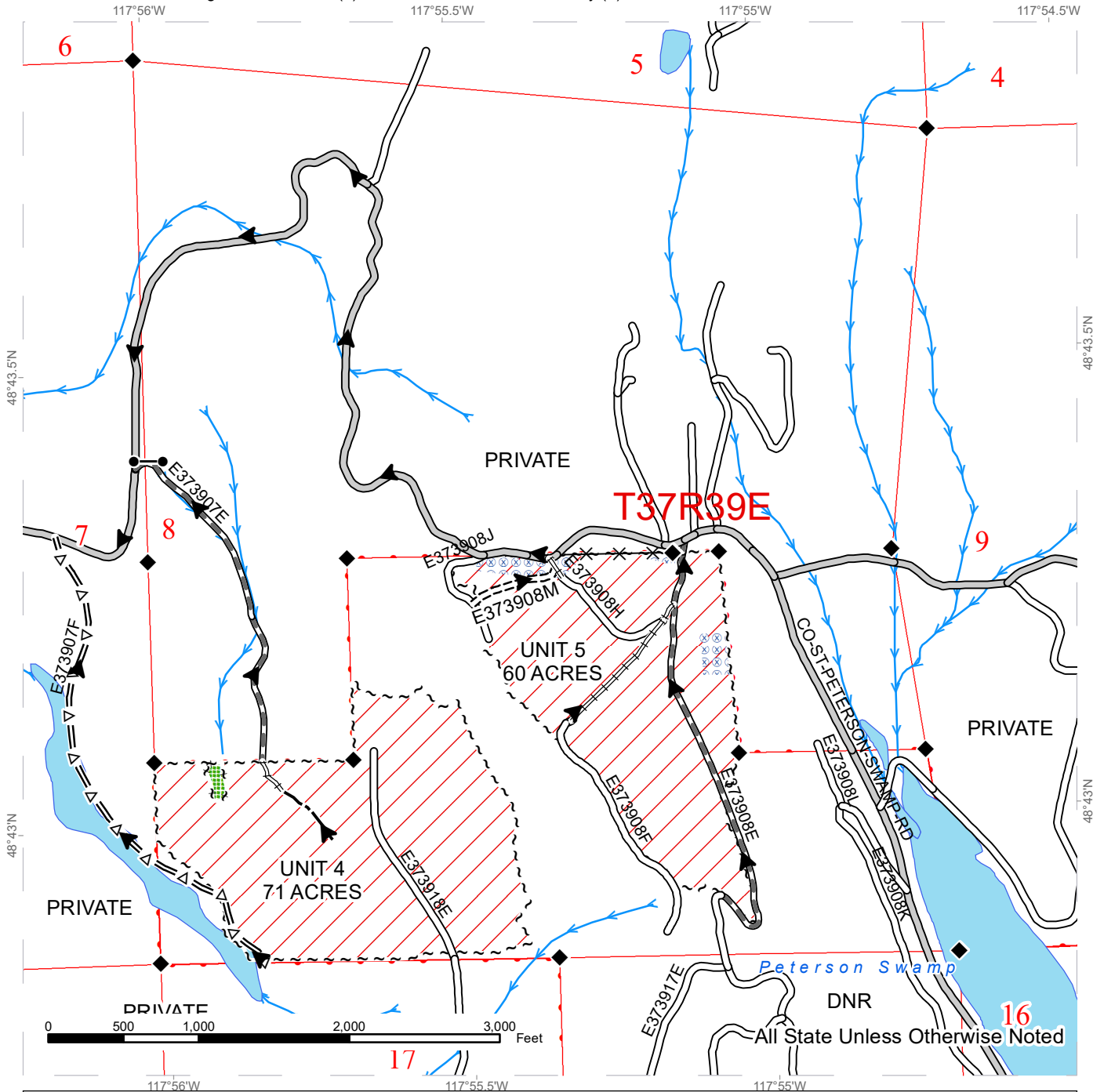
	Variable Retention Harvest		County Road		Haul_Route
	Hazard Abatement Area		Existing Roads		Streams
	Sale Boundary Tags		Required Pre-Haul Maintenance		Survey Monument
	Right of Way Tags (0.1 acres)		Required Reconstruction		Gates
	Public Land Survey Sections				Fence
	DNR Managed Lands				Power Lines



TIMBER SALE MAP

SALE NAME: Q BROOKS JUNCTION
AGREEMENT #: 30-098161
TOWNSHIP(S): T37R39E, T38R38E
TRUST(S): Agricultural School (4), Common School and Indemnity (3)

REGION: Northeast Region
COUNTY(S): Stevens
ELEVATION RGE: 1960-3000



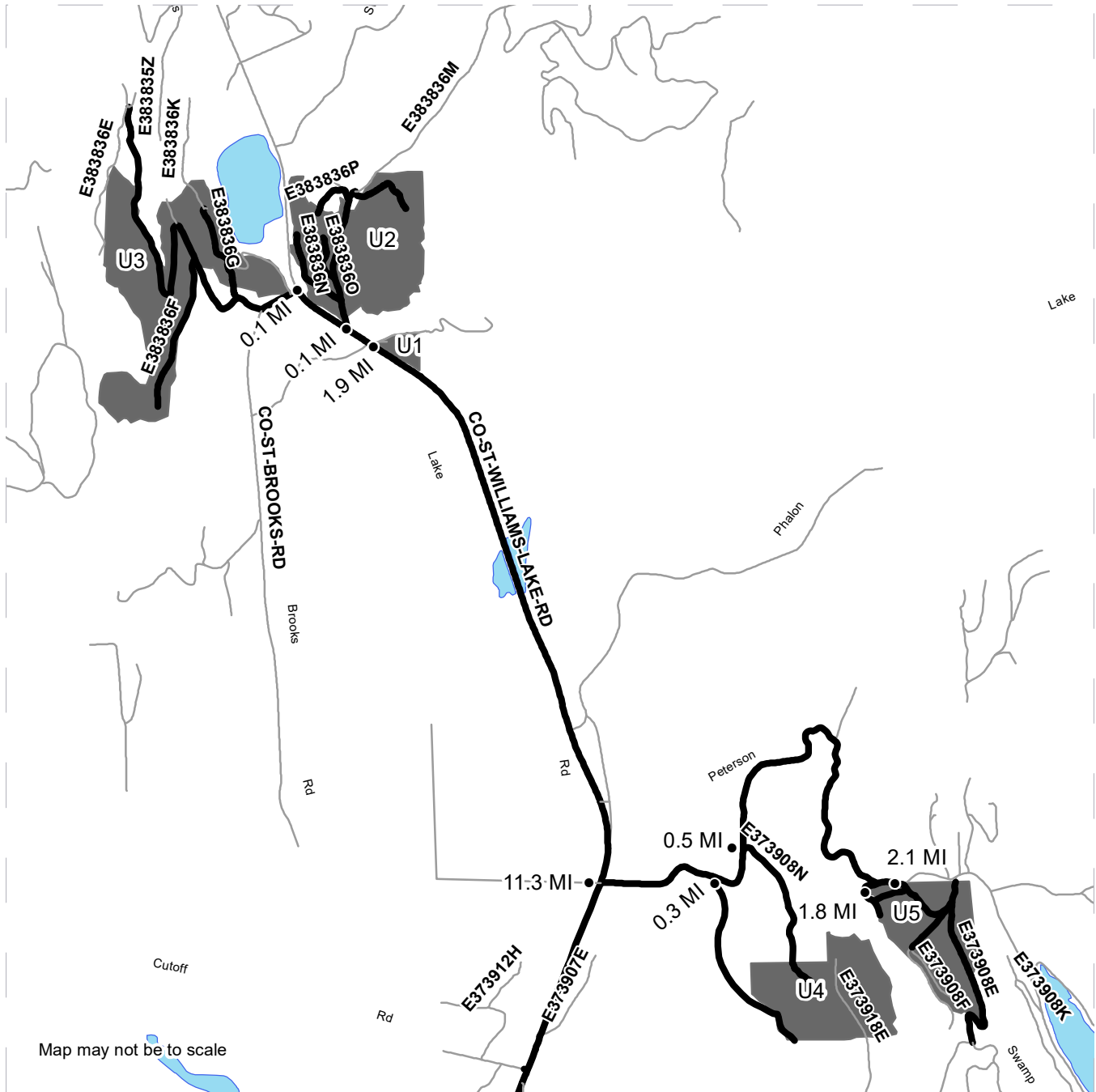
	Variable Retention Harvest		County Road		Haul_Route
	Leave Tree Area		Existing Roads		Streams
	Hazard Abatement Area		Required Pre-Haul Maintenance		Survey Monument
	Sale Boundary Tags		Required Construction		Gates
	Leave Tree Tags		Required Reconstruction		Fence
	Public Land Survey Sections		Optional Pre-Haul Maintenance		
	DNR Managed Lands		Optional Construction		



DRIVING MAP

SALE NAME: BROOKS JUNCTION
AGREEMENT#: 30-098161
TOWNSHIP(S): T37R39E, T38R38E
TRUST(S): Agricultural School (4), Common School and Indemnity (3)

REGION: Northeast Region
COUNTY(S): Stevens
ELEVATION RGE: 1960-3000



Map may not be to scale

- Timber Sale Unit
- Haul Route
- Other Road
- Distance Indicator

DRIVING DIRECTIONS:

From the North stop light in Colville drive North on 395 1.1 miles, turn right (North) on Williams Lake Road. Go 11.3 miles, for Units 4 and 5, turn right (East) Peterson Swamp Road. The access roads are located on the Right (South) side of the Road at .3 miles, .5 miles, 1.8 and 2.1 miles. For Units 1, 2 and 3, stay on the Williams Lake Road for 1.9 miles, Unit 1 is on the right (East) side. Proceed .1 miles Unit 2 is on the right (east). Proceed .1 miles, turn left (West) on Brooks Road, Unit 3 is on the right (North).





TIMBER NOTICE OF SALE

SALE NAME: HOMALONE

AGREEMENT NO: 30-98227

AUCTION: September 26, 2019 starting at 10:00 a.m., COUNTY: Wahkiakum Pacific Cascade Region Office, Castle Rock, WA

SALE LOCATION: Sale located approximately 3 miles northwest of Grays River

PRODUCTS SOLD AND SALE AREA: All timber, except leave trees bounded by yellow "Leave Tree Area" tags with pink flagging, leave trees marked with blue paint, and all down timber greater than 24 inches in diameter bounded by the following: white "Timber Sale Boundary" tags with pink flagging in Units 1 and 2; white "Timber Sale Boundary" tags with pink flagging and the G-2150 road in Unit 3; white "Timber Sale Boundary" tags with pink flagging and pink flagging along private property in Unit 4; All timber bound by the following: Orange "Right of Way" tags with orange paint and orange flagging in Units 5(ROW) and 6(ROW) on part(s) of Sections 2 and 11 all in Township 10 North, Range 8 West, W.M., containing 59 acres, more or less.

CERTIFICATION: This sale is certified under the Sustainable Forestry Initiative® program Standard (cert no: PwC-SFIFM-513)

ESTIMATED SALE VOLUMES AND QUALITY:

Table with columns: Species, Avg DBH, Ring Count, Total MBF, and MBF by Grade (1P, 2P, 3P, SM, 1S, 2S, 3S, 4S, UT). Rows include Hemlock, Douglas fir, Red alder, Red cedar, Spruce, and Sale Total.

MINIMUM BID: \$574,000.00 BID METHOD: Sealed Bids

PERFORMANCE SECURITY: \$100,000.00 SALE TYPE: Lump Sum

EXPIRATION DATE: October 31, 2021 ALLOCATION: Export Restricted

BID DEPOSIT: \$57,400.00 or Bid Bond. Said deposit shall constitute an opening bid at the appraised price.

HARVEST METHOD: This sale is estimated to be 100% ground based yarding. A detailed felling and yarding plan shall be required prior to any harvest activities. Shovel yarding is restricted to slopes of 45% or less. For additional harvest requirements, refer to the H-140 clause in the contract. Ground Based Yarding will not be permitted from October 1 to April 30 unless authorized in writing by the Contract Administrator.

ROADS: 5.92 stations of required construction. 2.80 stations of required reconstruction. 39.37 stations of optional construction. 18.57 stations of optional reconstruction. 115.62 stations of required prehaul maintenance. 10.98 stations of optional prehaul maintenance. 7.03 stations of required medium abandonment. 9.56 stations of medium abandonment, if



TIMBER NOTICE OF SALE

built. Rock used in accordance with the quantities on the ROCK LIST may be obtained from the Grays Point Pit located in Sec 11, T10N, R08W, W.M. Rock used in accordance with the quantities on the ROCK LIST may be obtained from any commercial source at the Purchaser's expense subject to written approval from Contract Administrator. Road construction will not be permitted from October 1 to April 30 unless authorized in writing by the Contract Administrator. The hauling of forest products will not be permitted from October 1 to April 30 unless authorized in writing by the Contract Administrator.

ACREAGE DETERMINATION

CRUISE METHOD: The sale acres were determined by GPS. The sale area was cruised using a variable plot cruise method.

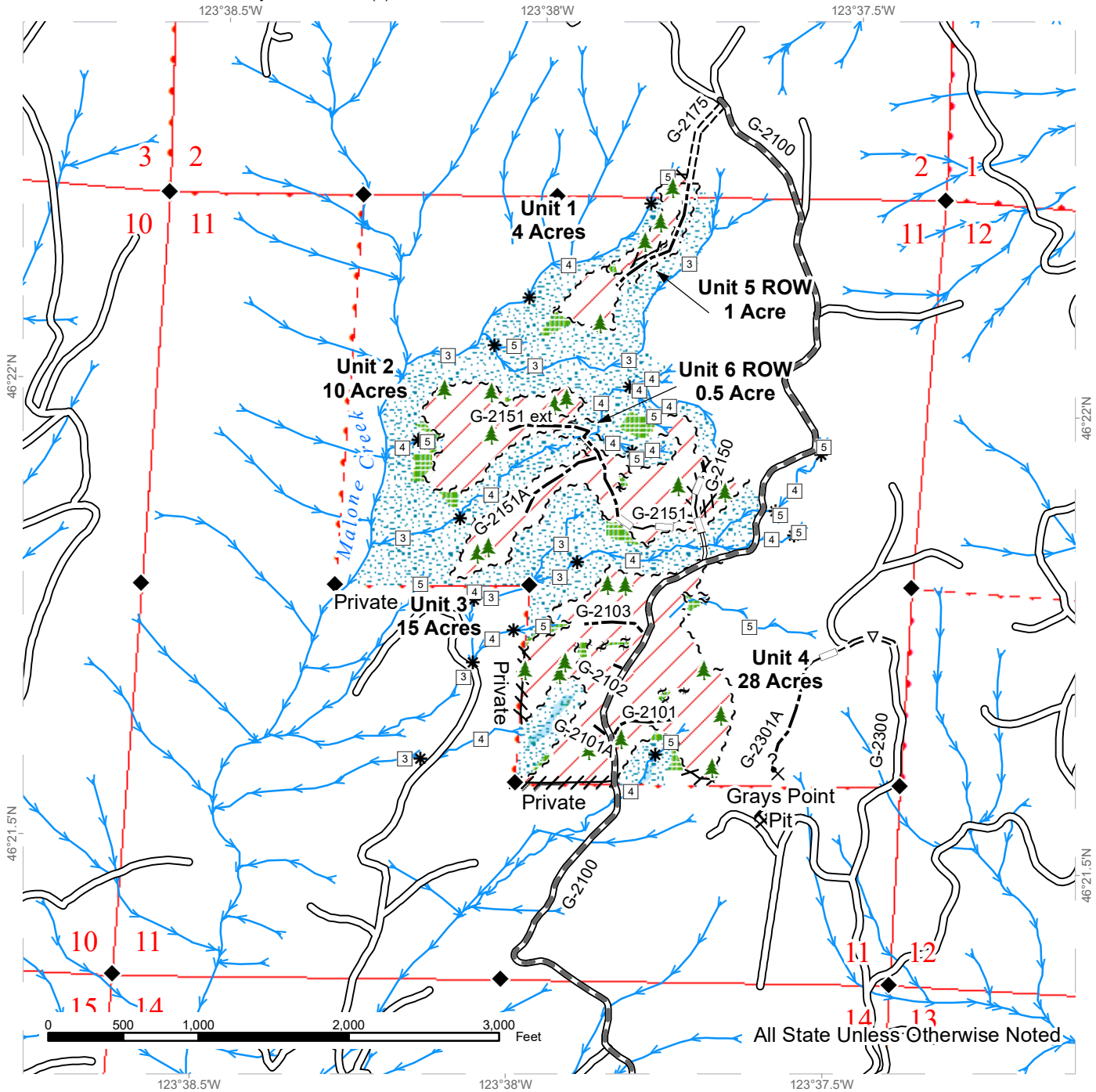
FEES: \$44,200.00 is due on day of sale. \$9.00 per MBF is due upon removal. These are in addition to the bid price.

SPECIAL REMARKS: This sale contains an estimated 186 MBF of higher quality DF 2 saw logs, 34 MBF of higher quality DF 3 saw logs, 702 MBF of higher quality WH 2 saw logs, 189 MBF of higher quality WH 3 saw logs, and 32 MBF of higher quality WH SM saw logs derived from the cruise. See cruise for details. See driving map for gate locations. PCP 1-1 gate keys may be obtained from the Pacific Cascade Region office.

TIMBER SALE MAP

SALE NAME: HOMALONE
AGREEMENT #: 30-098227
TOWNSHIP(S): T10R8W
TRUST(S): University - Transferred (5)
 123°38.5'W

REGION: Pacific Cascade Region
COUNTY(S): Wahkiakum
ELEVATION RGE: 452-1058
 123°37.5'W



All State Unless Otherwise Noted

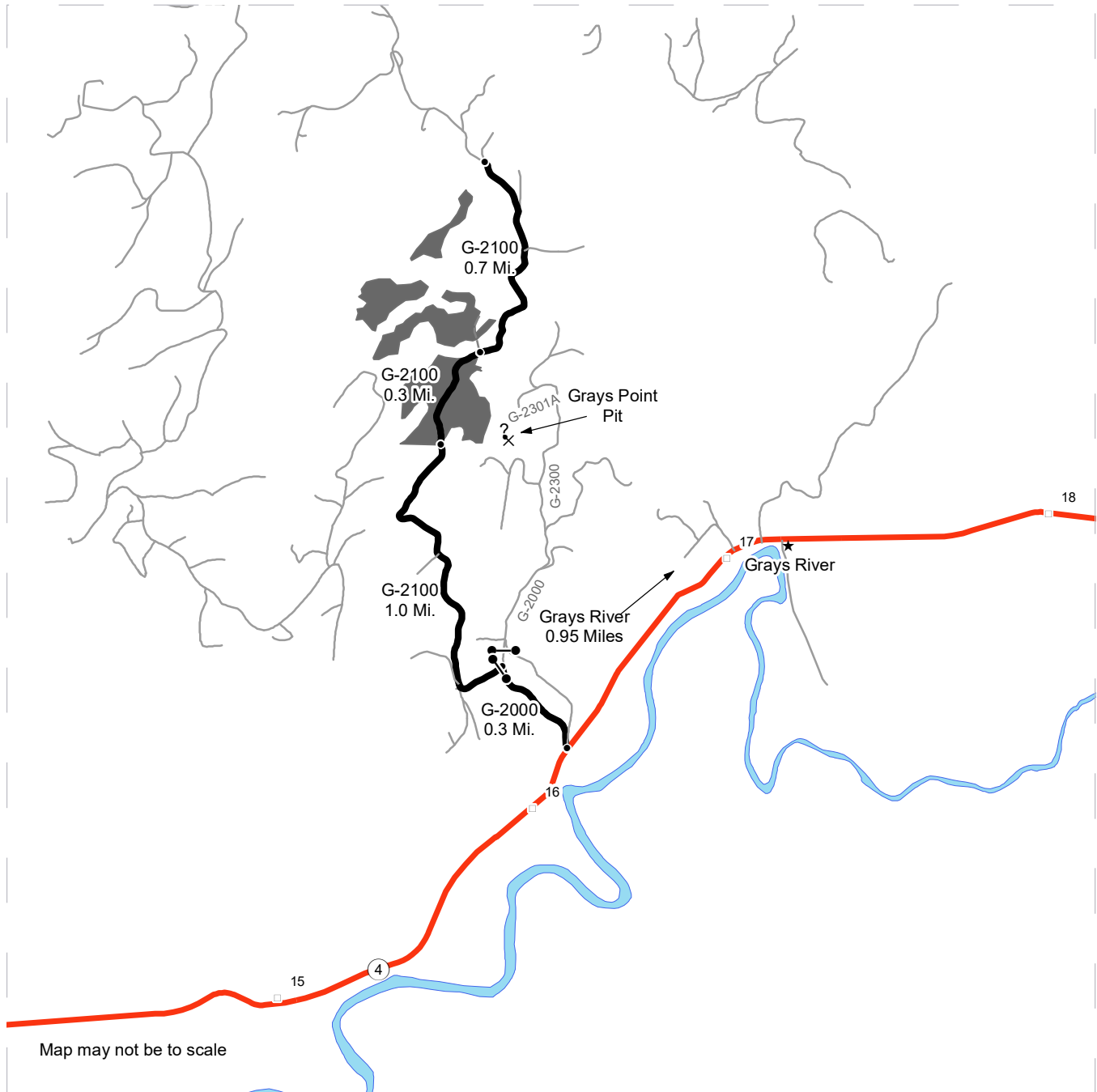
Sale Area	Existing Roads	Streams
Leave Tree Area	Required Pre-Haul Maintenance	Stream Type
Riparian Mgt Zone	Required Construction	Stream Type Break
Forested Wetland	Required Reconstruction	Survey Monument
Sale Boundary Tags	Optional Pre-Haul Maintenance	Leave Tree Area <1/4-acre
Leave Tree Tags	Optional Construction	Potential Rock Source
Right of Way Tags	Optional Reconstruction	
Flag Line		



DRIVING MAP

SALE NAME: HOMALONE
AGREEMENT#: 30-098227
TOWNSHIP(S): T10R8W
TRUST(S): University - Transferred (5)

REGION: Pacific Cascade Region
COUNTY(S): Wahkiakum
ELEVATION RGE: 452-1058



<ul style="list-style-type: none"> Timber Sale Unit Haul Route Other Road View Only Route Milepost Markers Distance Indicator Gate (PCP 1-1) ? X Potential Rock Source ★ Town 	<p>Driving Directions:</p> <p>From State Route 4 East of Mile Marker 16: Turn North on the G-2000 road and continue 0.3 miles to gate. Continue through gate on the G-2100 road 1 mile to Unit 4. Continue on the G-2100 road 0.3 miles to access Unit 3 & 2. Continue on the G-2100 road 0.7 miles to access Unit 1(walk-in). Follow staked P-Line to Unit.</p>
--	---



**State of Washington
Department of Natural Resources**

SEALED BID FORM

Sale Name _____ Agreement Number _____

_____ hereby submits the following bid for timber.
(Print full, legal company name)

(Street address, City, State, Zip Code)

(Phone Number)

Lump Sum Bid (Not Including Fees) \$ _____ **For Total Sale**

Weight Scale Sale Bid (Not Including Fees) \$ _____ / **Ton**

Scribner Scale Sale Bid (Not Including Fees) \$ _____ / **MBF For Biddable Species**

BID DEPOSIT

Bid Deposit Amount: \$ _____

Bid Deposit Type:

- Cash, certified check, cashiers check, or money order
 Per Sale Bid Bond
 Statewide Bid Bond, Number _____

Within 30 days of confirmation date the successful bidder agrees to furnish Performance Security acceptable to the State in the amount specified on the Notice of Sale. Performance Security must guarantee performance of all provisions of the contract and payment of any damages caused by operations under the contract or resulting from the successful bidders noncompliance with any rule or law.

Bidder's Warranty and Bid Signature

By signing and submitting this bid as an offer to purchase forest products from the State, the Bidder hereby warrants to the State that they have had an opportunity to fully inspect the sale area and the forest products being sold. Bidder further warrants to the State that they enter this bid based upon their own judgments of the value of the forest products, formed after their own examination and inspection of both the timber sale area and the forest products being sold. Bidder also warrants to the State that they enter this bid without any reliance upon the volume estimates, acreage, appraisals, pre-bid documentation, or any other representation by the Washington State Department of Natural Resources.

_____ Date _____
(Signature of Authorized Representative submitting this bid)

(Print **name and title** of Authorized Representative submitting this bid)

Note: all sales are subject to confirmation by the Commissioner of Public Lands (Refer 79.15.120)

Instructions For Completing Sealed Bid Form

All bids submitted for the purchase of forest products being sold by the Washington State Department of Natural Resources must have an original signature on behalf of the person or entity submitting the bid, and must be on the form provided in this booklet or a photocopy thereof. The DNR will not accept bids that are not signed, and will not accept bids that are not on the current, approved bid form. All appropriate blanks on bid form must be completed including the bid bond number if the bidder is relying upon a bid bond for bid deposit.

For more specific information, contact the appropriate region office.

In-Person Bids

- A. Sealed bids must be in auction box before 10:00 a.m. on the day of auction at the location specified in the Timber Notice of Sale.
 - B. Sealed bids must be submitted in an envelope with the name of the sale, the bidder's name and the contract number clearly written on the outside of the envelope. The full legal name and business address of the bidder must be inserted where indicated on the form, and must be on the bid bond and timber sale contract. The bid form must be signed by an authorized representative. When a bidder has more than one person authorized to bid, documentation of those persons with signature authority for bidding must accompany the bid or be on file at the region office. Sealed bid envelopes are available at all region offices. One bid per envelope.
 - C. Sealed bid envelopes **must** contain a completed bid form and a bid deposit.
 - D. Sealed bid envelopes **may** contain a check for the Initial Deposit amount and a check for fees.
-

Mailed Bids

- A. Bids that are mailed are required to have printed on the outside: "DO NOT OPEN UNTIL SALE DATE. SEALED BID ENCLOSED". The sealed bid envelope(s) will be enclosed inside the mailed-in envelope. Mailed bids must be submitted in an envelope with the name of the sale, the bidder's name and the agreement number clearly written on the outside of the envelope. The full legal name and business address of the bidder must be inserted where indicated on the form, and must be the same on the bid bond and timber sale contract. The Sealed Bid Form must be signed by an authorized representative. When a bidder has more than one person authorized to bid, documentation of those persons with signature authority for bidding must accompany the bid or be on file at the region office. Mail-in envelopes are available at all region offices. One bid per mailed-in envelope.
 - B. Bids that are mailed will be accepted up to 4:30 p.m. the last business day before the auction by the region office in which the sale is located. Bidders assume the risk for the method of delivery. The DNR assumes no responsibility for any delays caused by any delivery service.
 - C. Sealed bid envelopes **must** contain a completed bid form and a bid deposit.
 - D. Sealed bid envelopes **may** contain a check for the Initial Deposit amount and a check for fees.
-

Initial Deposit:

Lump Sum Sales - Initial Deposit must equal 10% of the total bid submitted.
(25% if the bidder is a defaulter as defined under WAC 332-140-300)

Weight Scale Sales - Initial Deposit must equal 10% of the bid per ton multiplied by the total sale estimated tonnage. (25% if the bidder is a defaulter as defined under WAC 332-140-300)

Scribner MBF Scale Sales - Initial Deposit must equal 10% of the bid per MBF multiplied by the total sale MBF. (25% if the bidder is a defaulter as defined under WAC 332-140-300)

**State of Washington
Department of Natural resources**

STATEWIDE BID BOND

Bond Number _____

_____ of _____,
(Principal's Name) (City, State)

hereinafter called PRINCIPAL, and _____ hereinafter called
SURETY,

a corporation organized under the laws of the State of _____, and authorized to transact surety business in the State of Washington, as SURETY, are held and firmly bound jointly and severally to the State of Washington, Department of Natural Resources, hereinafter called the STATE, in the sum of \$150,000.00 Dollars, lawful money of the United States of America. The PRINCIPAL binds itself, its heirs, executors, administrators, successors, and assigns, and the SURETY binds itself, its successors, and assigns, all jointly and severally.

This bond shall be governed by the laws of the State of Washington. In the event of a lawsuit involving this bond, a venue shall be proper only in Thurston County Superior Court.

Signed, sealed and dated this _____ day of _____, _____ .
(month) (year)

This statewide bid bond may be used for bidding between the following dates:

Starting:

Ending:

It Is Hereby Understood and Agreed:

If PRINCIPAL is an apparent high bidder, PRINCIPAL shall before 4:30 p.m ., on day of sale, pay to the STATE the amount of the initial deposit in the form of a certified check, cashier's check, bank draft, cash or money order, then this agreement shall be void for the sale on which the payment is made; otherwise, it will remain in force.

SURETY will make payment to the STATE within ten days after demand by the STATE if the PRINCIPAL shall fail to make timely payment as described above.

The SURETY may cancel this bond by sending a written notice to the STATE, not less than forty-five days before a cancellation date; liability shall terminate as to acts or omissions of the PRINCIPAL that occur after the cancellation date.

The PRINCIPAL and the SURETY executed this bond on the date first mentioned.

Principal: (Above named)

Signature: _____

Name: _____

Title: _____

Address: _____

City: _____
State & Zip Code

Surety: (Above named)

Signature: _____

Name: _____

Title: _____

Address: _____

City: _____
State & Zip Code

Surety: (Local Office of Authorized agent)

Signature: _____

Name: _____

Title: _____

Address: _____

City: _____
State & Zip Code

Notary or Company Seal in Space Above

Instructions for Completing Timber Sale Statewide Bid Bond

- A. This form is authorized for use as bid guaranty to qualify for bidding on Washington State Department of Natural Resources timber sales.
- B. The Statewide Bid Bond may be used as bid guaranty on more than one timber sale.
- C. The full legal name and business address of the PRINCIPAL must be inserted where indicated and must be the same as will appear on the bidding record and timber sale contract. The bond must be signed by an authorized person. Additionally, the name must be typed or printed below the signature and title must be shown.
- D. The full legal name and business address of the SURETY must be inserted where indicated. The bond must be signed by an authorized person. Additionally, the name must be typed or printed below the signature and the title must be shown.
- E. If the SURETY does not have a Washington State office or resident agent, but is authorized to transact surety business in the State of Washington as SURETY, it may leave this signature block blank.
- F. This form must be received by the Department of Natural Resources, Product Sales & Leasing Division, PO BOX 47016, Olympia, Washington, 98504-7016, ten days in advance of the auction.
- G. **The State reserves the right to reject *incomplete or incorrect* bid bond forms, making such forms unacceptable as bid guaranty.**

**State of Washington
Department of Natural Resources**

Timber Sale Per Sale Bid Bond

Bond Number _____

_____ of _____, hereinafter called PRINCIPAL, and _____, hereinafter called SURETY, a corporation organized under the laws of the State of _____ and authorized to transact surety business in the State of Washington, as SURETY, are held and firmly bound jointly and severally to the State of Washington, Department of Natural Resources, hereinafter called the STATE, in the sum of \$ _____ Dollars, lawful money of the United States of America. The PRINCIPAL binds itself, its heirs, executors, administrators, successors, and assigns, and the SURETY binds itself, its successors, and assigns, all jointly and severally.

This bond shall be governed by the laws of the State of Washington. In the event of a lawsuit involving this bond, venue shall be proper only in Thurston County Superior Court.

Signed, sealed, and dated this _____ day of _____, 20 _____.

BID IDENTIFICATION:

SALES NAME(S)	REQUIRED DEPOSIT	AGREEMENT NUMBER(S)

DATE OF BID: _____

It Is Hereby Understood and Agreed:

If PRINCIPAL is the high bidder on the sale(s) identified above and, within ten (10) days of the day of sale, transmits cash, certified check, cashier's check, bank draft or money order, payable to the STATE, in the amount of the bid guaranty required by the terms of the Notice of Sale, *then* this obligation shall be void; *otherwise*, it shall remain in force.

SURETY will make payment to the STATE within ten (10) days after demand by the STATE whenever the PRINCIPAL shall fail to make timely payment as described above.

IN WITNESS WHEREOF: the PRINCIPAL and the SURETY have caused this bond to be executed on the date first mentioned.

SECOND OFFICER:

Signature: _____

Name: _____

Title: _____

PRINCIPAL: (Above Named)

Signature: _____

Name: _____

Title: _____

SURETY: (Local Office of Authorized Agent)

Signature: _____

Name: _____

Title: _____

Address: _____

City: _____

State & Zip: _____

SURETY: (Above Named)

Signature: _____

Name: _____

Title: _____

Address: _____

City: _____

State & Zip _____

NOTARY OR COMPANY SEAL IN THE SPACE ABOVE

Instructions for Completing Timber Sale Per Sale(s) Bid Bond

- A. This form is authorized for use as bid guaranty to qualify for bidding on Washington State Department of Natural Resources timber sales.
- B. The Timber Sale Per Sale Bid Bond may be used as bid guaranty on more than one timber sale auction held the same date at the same location.
- C. The full legal name and business address of the PRINCIPAL must be the same as will appear on the bidding record and timber sale contract. The bond must be signed by an authorized person, the name typed or printed, and title shown. If PRINCIPAL is a corporation, a second officer must sign in the space to the left of the signature of the officer executing for the PRINCIPAL.
- D. The full legal name and business address of the SURETY must be inserted where indicated. The bond must be signed by an authorized person. Additionally, the name must be typed or printed below the signature and the title must be shown. If this person is not an officer of the corporation, evidence of authority must be submitted.
- E. If the SURETY does not have a Washington State office or resident agent, but is authorized to transact surety business in the State of Washington as Surety, it may leave the local office signature block blank.
- F. The date of the bid bond must not be later than the auction date.
- G. **The State reserves the right to reject incomplete or *incorrect* bid bond forms, making such forms unacceptable as guaranty.**

STATE OF WASHINGTON
DEPARTMENT OF NATURAL RESOURCES
LOG SORT SEALED BID FORM

Sale Name _____ Agreement Number _____ Date _____

_____ hereby submits the following bid for delivered logs.
(Print Company Name)

_____ Telephone Number _____
(Print Name Authorized Company Representative) (Contact for bid result notification)

(Street Address)

(City, State and Zip)

Agreement Number	Sort Number	<u>Delivered</u> Logs Bid Amount (fill in one only)	
		\$ /MBF	\$ /TON

Bid Deposit Amount \$ _____

- Bid Deposit Type:**
- Cash, Certified Check, Cashiers Check, or Money Order
 - Per Sale Bid Bond
 - Statewide Bid Bond, Number _____

The successful bidder agrees to furnish payment security acceptable to the State in the amount as described in clause P-041 of the Purchaser’s contract prior to log delivery and at a date to be determined by the State.

Bidder’s Warranty and Bid Signature

By signing and submitting this bid as offer to purchase forest products from the State, the Bidder hereby warrants to the State that they have had an opportunity to fully inspect the sale area and the forest products being sold. Bidder further warrants to the State that they enter this bid based solely upon their own judgment of the value of the forest products, formed after their own examination and inspection of both the timber sale area and the forest products being sold. Bidder also warrants to the State that they enter this bid without any reliance upon the volume estimates, acreage estimates, appraisals, pre-bid documentation, or any other representation by the State Department of Natural Resources.

(Signature of Authorized Representative submitting this bid)

(Date of Signature)

(Print name and title of Authorized Representative submitting this bid)

NOTES: A separate bid form is required for each log sort bid and must be delivered in a separate envelope. Photocopies of this bid form may be used. Each photocopy must have original signatures. Final contract award is contingent upon the State’s haul cost analysis. Actual haul route may vary and is subject to change at the State’s discretion. All sales are subject to confirmation by the Commissioner of Public Lands as per RCW 79.15.100.

LOG SORT SEALED BID SUPPLEMENTAL INFORMATION FORM_____
(Print Company Name)_____
(Sale Name)_____
(Agreement Number)_____
(Sort Number)_____
(email: optional for DNR production report distribution)**Log Manufacturing Specifications:****Sawlog and Peeler sorts:** Enter at least one preferred log length including trim for each log length range below.**Pole sorts (Distribution):** Enter three or more lengths. Attach preferred manufacturing information.**Pole sorts (Transmission):** Enter six or more lengths. Attach preferred manufacturing information.**Tonnage sorts:** See bid form instructions for required log lengths. Enter additional custom lengths as desired.

Log Length Ranges	Bidder's Preferred Log Lengths
16 ft. through 20 ft.	
22 ft. through 30 ft.	
32 ft. through 40 ft.	
Distribution Poles – 35 ft. through 55 ft.	
Transmission Poles – 60 ft.+	

Log Delivery Information:**1) Designate the point of delivery and address (must be a street address)**_____
(Location Name)_____
(Street Address)_____
(City, State and Zip)**2) Designate the state approved Scaling and Weighing facilities closest to the point of delivery as needed.****Scaling Location Information****Weighing Location Information**_____
(Scaling Location Name)_____
(Weighing Location Name)_____
(Third Party Scaling Organization)_____
(Weighing Location Owner)_____
(Scaling Location Street Address)_____
(Weighing Location Street Address)_____
(Scaling Location City, State and Zip)_____
(Weighing Location City, State and Zip)

Final contract award is contingent upon the State's haul cost analysis. Actual haul route may vary and is subject to change at the State's discretion. Additional terms or conditions requested by the bidder on or attached to the Log Sort Sealed Bid or Supplemental Information Forms are informational only and non-binding.

Instructions for Completing the Log Sort Sealed Bid and Supplemental Information Forms.

All bids submitted for the purchase of forest products being sold by the Washington State Department of Natural Resources must have an original signature on behalf of the person or entity submitting the bid, and must be on the form(s) provided in this booklet or a photocopy thereof. The DNR will not accept bids that are not signed, and will not accept bids that are not on the current, approved bid form. All appropriate blanks including Agreement Number, Sort Number, Bid amount (per mbf or ton as appropriate for the sort), Bid deposit amount and type. Signatures and date on bid form must be completed including the bid bond number if bidder is relying upon a bid bond for bid deposit.

Bids shall not be accepted if a completed '**Log Sort Sealed Bid Supplemental Information Form**' is not included with the approved '**Log Sort Sealed Bid Form**'.

Required log lengths for tonnage sorts: Preferred log lengths for tonnage sawlog sorts shall include the following plus any additional lengths identified on the Bid Supplemental Information form:

Species Type	Preferred Lengths
Conifer Sorts	16', 20', 24', 26', 32', 40'
Hardwood Sorts	18', 20', 26', 28', 30', 36', 38', 40'

For more specific information, contact the appropriate region office.

In-Person Bids

- A. Sealed bids must be in auction box or auction envelope before 10:00 a.m. on the day of sale at the location specified in the notice of sale.
- B. Sealed bids must be submitted in an envelope with the name of the sale, the bidder's name and the contract agreement number clearly written on the outside of the envelope. The full legal name and business address of the bidder must be inserted where indicated on the form, and must be the same as the name on the bid bond and timber sale contract. The bid form must be signed by an authorized person. When a bidder has more than one person authorized to bid, then documentation of those persons with signature authority for bidding must accompany the bid or be on file at the region office. Sealed bid envelopes are available at all region offices. One bid per envelope.
- C. Sealed bid envelopes must contain the following:
 1. A completed '**Log Sort Sealed Bid Form**';
 2. A completed '**Supplemental Information Form**' and;
 3. A bid deposit

Mailed Bids

- A. Mail-in bid envelopes are required to have printed on the outside: "DO NOT OPEN UNTIL SALE DATE. SEALED BID ENCLOSED." The sealed bid envelope(s) will be enclosed inside the mailed-in envelope. Mailed bids must be submitted in an envelope with the name of the sale, the bidder's name and the agreement number clearly written on the outside of the envelope. The full legal name and business address of the bidder must be inserted where indicated on the form, and must be the same on the bid bond and timber sale contract. The bid form must be signed by an authorized person. When a bidder has more than one person authorized to bid, then documentation of those persons with signature authority for bidding must accompany the bid or be on file at the region office. Mail-in envelopes are available at all region offices. One bid per mailed-in envelope.
- B. Mail-in or otherwise delivered bids will be accepted up to 4:30 p.m. the last business day before the auction by the region office in which the sale is located. Bidders assume the risk for the method of delivery they chose. The DNR assumes no responsibility for any delays caused by any delivery service.
- C. Sealed bid envelopes must contain the following:
 1. A completed '**Log Sort Sealed Bid Form**';
 2. A completed '**Log Sort Sealed Bid Supplemental Information Form**' and;
 3. A bid deposit

Department of Natural Resources Region Offices

Olympia Headquarters
 1111 Washington St SE
 MS 47000
 Olympia, WA 98504-7000
 (360) 902-1000
www.dnr.wa.gov

Product Sales & Leasing Division

1111 Washington St SE
 MS 47014
 Olympia, WA 98504-7014
 (360) 902-1600

South Puget Sound Region

950 Fairman Ave N
 Enumclaw, WA 98022-9282
 (360) 825-1631

Pacific Cascade Region

601 Bond Road
 PO Box 280
 Castle Rock, WA 98611-0280
 (360) 577-2025

Southeast Region

713 Bowers Road
 Ellensburg, WA 98926-9301
 (509) 925-8510

Northwest Region

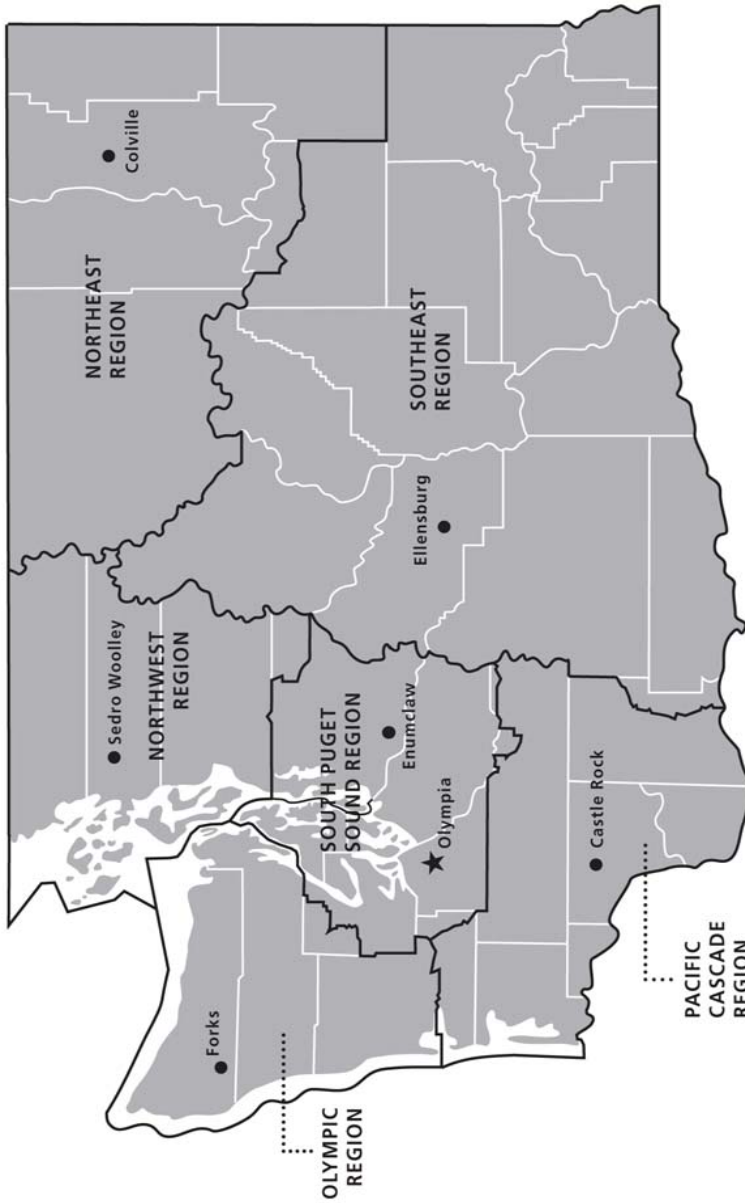
919 N Township St
 Sedro Woolley,
 WA 98284-9384
 (360) 856-3500

Olympic Region





411 Tillicum Lane
 Forks, WA 98331-9271
 (360) 374-2800

Northeast Region

225 S Silke Road
 PO Box 190
 Colville, WA 99114-0190
 (509) 684-7474



DNR REGIONS

-  DNR Region Boundaries
-  County Boundaries
-  DNR Region Office
-  Olympia Headquarters



WASHINGTON STATE DEPT OF
NATURAL RESOURCES



For more information about how public lands are managed visit DNR's web page at www.dnr.wa.gov

Fire, Burn Ban Information and Region Offices
 Toll Free: 1-800-527-3305 General TTY: 7-1-1





WASHINGTON STATE DEPT OF
**NATURAL
RESOURCES**

1111 WASHINGTON ST SE
MS 47014
OLYMPIA WA 98504-7014

www.dnr.wa.gov

For alternate formats
of this document,
Call (360) 902-1000
TRS: 7-1-1

PRINTED IN THE USA ON RECYCLED PAPER

