



Public Auction Sale of Timber

December 2022

Book 1042



IMPORTANT NOTICES

Natural Resources (DNR)

Governmental Regulatory Actions or Orders

The purchaser assumes the risk of liabilities related to regulatory actions or orders by any government agency that may affect the operability of these timber sales. Such regulatory actions or orders include, but are not limited to, actions taken pursuant to the State Forest Practices Act, Chapter 76.09 RCW, and the Federal Endangered Species Act, 16 U.S.C. §§ 1531-1544. Please see timber sale contract clauses G-066 and G-220 for further information.

Threatened and Endangered Species

DNR cannot verify the presence or absence of any threatened or endangered species that may affect the operability of the timber sale. Purchasers must rely on their own assessments.

Export Restricted

All timber purchased under these state DNR contracts shall not be exported outside of the United States until the timber has been processed. Purchasers shall not violate any of the prohibitions in WAC 240-15-015 (relating to the prohibitions on export and substitution), WAC 240-15-025 (relating to reporting requirements), and WAC 240-15-030 (relating to enforcement). If purchasers knowingly violate WAC 240-15-015, purchasers shall be barred from bidding on or purchasing export restricted timber as provided.

Cover photos

Timber Sales in this book are from state trust lands, managed to help build K-12 public schools, state universities, colleges, prisons, mental hospitals, the state Capitol; and to support local services in many counties.

Top right: Landscape view of DNR-managed trust lands in western Washington. Photo courtesy of DNR staff.

Second down right: Timber harvest operations on DNR-managed trust land. Photo courtesy of DNR staff.

Third down right: Log truck loaded with timber harvested from DNR-managed trust land. Photo courtesy of DNR staff.

Bottom right: Marcus Whitman Elementary School in Richland Washington. Photo courtesy of Richland School District.

Bottom middle: Storytime at the Shelton Timberland Library. Photo courtesy of Timberland Regional Library.

Bottom left: Douglas-fir seedlings growing at the Webster Nursery. Many of these seedlings will be planted following timber harvest on DNR-managed trust lands. Photo courtesy of DNR staff.

Table of Contents

Certification Opportunities for DNR Timber Purchasers	Page 3
Bidder/Purchaser Auction and Bidding Information	Page 5
Summary of All Sales Being Offered in December	Page 9
Baltimore Plot	Page 11
Thyme Machine	Page 15
Bell Of The Ball	Page 21
Fangorn	Page 27
Bear Bones	Page 31
V Twin	Page 39
Box of Rain	Page 45
Sealed Bid Form and Instructions	Page 51
Statewide Bid Bond and Instructions	Page 53
Timber Sale per Sale Bid Bond and Instructions	Page 57
Log Sort Sealed Bid Form and Instructions	Page 61



Certification Opportunities for DNR Timber Purchasers

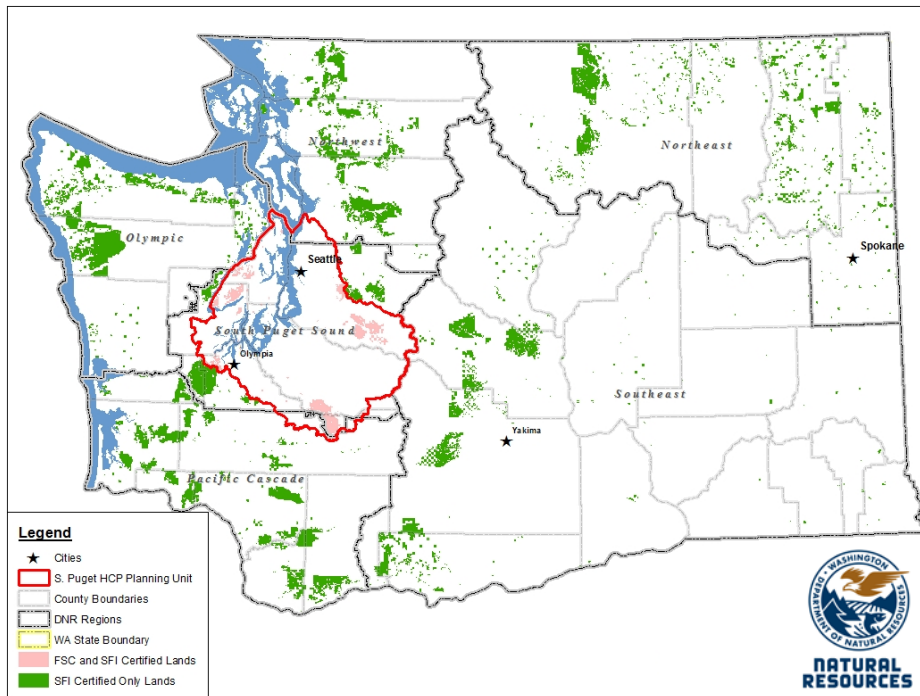
Certified forests are grown to an approved set of standards which demonstrate environmentally responsible, socially beneficial, and economically viable management practices that promote responsible forestry. This unique commitment to responsible forestry recognizes that forest landowners play a critical role in ensuring the long-term health and sustainability of our forests.

Forest Stewardship Council® (FSC®) is an independent, non-profit organization that promotes responsible management of the world's working forests through the development of forest management standards, a voluntary certification system, and trademarks that provide recognition and value to products bearing the FSC label in the marketplace. FSC standards ensure forestry is practiced in an environmentally responsible, socially beneficial, and economically viable way.

Sustainable Forestry Initiative Inc. is an independent, non-profit organization internationally endorsed and accepted around the world. The Sustainable Forestry Initiative® (SFI) program is based on the premise that responsible environmental behavior and sound business decisions can coexist. Its three-chamber Board of Directors governs all aspects of the SFI® program, with equal representation from the environmental, economic, and social sectors.

Currently, all Department of Natural Resources (DNR)-managed forestlands and conservation areas in Washington State are certified under the SFI program Standard. Forestlands within DNR's South Puget Habitat Conservation Plan Planning Unit, located within parts of King, Pierce, Thurston, Lewis, Kitsap, and Mason counties, are dually certified under both the FSC-US Forest Management Standard and the SFI program Standard.

Certification under each standard involves an inspection audit of the landowner's forest management activities by an independent, accredited third-party to verify that it meets specified forest management principles. If the forest unit complies with the specific standard, the landowner receives a certificate of conformance ensuring that responsible forestry is being practiced. Both standards encourage integration of perpetual growing and harvesting of trees with strong measures to protect wildlife, plants, soil, water, and air quality. Both standards provide a seal of approval that forests certified under these principles are well-managed. The global marketplace recognizes and endorses multiple forest certification standards. Each standard has individual market niches. By being dually certified, DNR can maximize its customer base and provide choices to the consumer.



DNR's FSC certificate number is: BV-FM/COC-080501

DNR's SFI certificate number is: PwC-SFIFM-513

DNR-managed forestlands within the South Puget Habitat Conservation Plan Planning Unit (located within parts of King, Pierce, Thurston, Lewis, Kitsap, and Mason counties) are certified as being in compliance with the Forest Stewardship US Forest Management Standard.

To learn more about chain of custody and demonstrating that your timber is derived from a responsibly managed forest and/or to learn more about becoming a participant in the FSC Program, visit <https://us.fsc.org/>.

To learn more about DNR timber sales certified under the FSC Standard, visit www.dnr.wa.gov.

FSC A.C. owns all right, title, and interest in and to the Forest Stewardship Council trademarks.

All DNR-managed forested state trust lands across the state have been certified as being in compliance with the Sustainable Forestry Initiative Forest Management Standard.

To learn more about chain of custody and demonstrating that your timber is derived from a responsibly managed forest and/or to learn more about becoming a participant in the SFI program, visit www.sfiprogram.org.

To learn more about DNR timber sales certified under the SFI program Standard, visit www.dnr.wa.gov.

SFI Marks are registered marks owned by Sustainable Forestry Initiative Inc.

To learn more about certification on DNR-managed forested state trust lands, visit <https://www.dnr.wa.gov/programs-and-services/product-sales-and-leasing/timber-sales/forest-certification> or contact:

Product Sales & Leasing Division, Product Sales Section:

Duane Emmons, Division Manager, 360-902-1088, duane.emmons@dnr.wa.gov
 Steve Teitzel, Operations, 360-902-1741, steve.teitzel@dnr.wa.gov

Forest Resources Division, HCP and Scientific Consultation Section:

Allen Estep, Assistant Division Manager, 360-902-2898, allen.estep@dnr.wa.gov
 Nicole Jacobsen, Forest Certification Program Lead, 360-902-1283, nicole.jacobsen@dnr.wa.gov

Washington State Department of Natural Resources (DNR)

Bidder's/Purchaser's Inspection of Sale Area and Forest Products

Acreage estimates and volume estimates contained within each timber notice of sale and each timber sale contract are made only for administrative and identification purposes. Except as expressly provided by the timber sale contract, the purchaser shall be responsible for paying the entire purchase price, even if the actual acreage or timber volume varies from the estimated quantity or volume shown.

All prospective bidders have the opportunity and are expected to inspect the sale area and the forest products located thereon. Bidders shall not rely on any representations by the State including, but not limited to, acreage estimates, volume estimates, appraisal or pre-bid documentation. The successful bidder/purchaser will further warrant that they have entered the timber sale contract without any reliance upon the DNR's volume estimates, acreage estimates, appraisals, pre-bid documentation, or any other representation by the DNR.

Any timber sale contract arising out of these public auctions will require the successful purchaser to warrant that they are entering the timber sale contract based solely upon their own judgment of the value of the forest products, formed after their own examination and inspection of both the timber sale area and the forest products being sold.

Exclusion and Disclaimer of Warranties

The PARTIES AGREE that the IMPLIED WARRANTIES OF MERCHANTABILITY AND FITNESS FOR A PARTICULAR PURPOSE, and ALL OTHER WARRANTIES EXPRESS OR IMPLIED, ARE EXCLUDED from this transaction, and shall not apply to the goods sold. For example, THE FOLLOWING SPECIFIC MATTERS ARE NOT WARRANTED, and are EXCLUDED from this transaction:

- A. ***The merchantability of the forest products.*** The use of the term "merchantable" in any document is not intended to vary the foregoing.
- B. ***The condition of the forest products.*** All forest products will be conveyed "AS IS."
- C. ***The acreage contained within any sale area.*** Any acreage descriptions appearing in the timber notices of sale, timber sale contract, timber sale map or other documents are estimates only, provided solely for administrative and identification purposes.
- D. ***The volume, quality, or grade of the forest products.*** The descriptions of the forest products to be conveyed are estimates only, made solely for administrative and identification purposes.
- E. ***The correctness of any soil or surface conditions, presale construction appraisals, investigations, and all other pre-bid documents prepared by or for the State.*** These documents have been prepared for the State's appraisal purposes only.
- F. ***That the sale area is free from threatened or endangered species, or their habitat.*** The State is not responsible for any interferences with forestry operations that result from the presence of any threatened or endangered species, or the presence of their habitat, within the sale area.
- G. That the forestry operations to be performed under this contract will be free from regulatory actions by governmental agencies. The State is not responsible for actions to enforce regulatory laws, such as the Washington Forest Practices Act (Chapter 76.09 RCW), taken by the Department of Natural Resources or any other agency that may affect the operability of these timber sales.
- H. Items contained in any other documents prepared for or by the State.

Please also see timber sale contract clause G-060 for further information.

BIDDING PROCEDURES FOR TIMBER AUCTIONS

The general requirements that follow are a part of all Timber Notices of Sale to be auctioned by the Department of Natural Resources (DNR).

General Information

The State reserves the right to waive minor irregularities and the right to reject any or all bids.

- A. This book contains the timber notices of sale and maps for each timber sale scheduled to be auctioned. More specific information can be obtained by contacting the appropriate region office at the number listed on the back cover of this book. Sales may be added to each monthly auction by the Department which are not included in this publication. This publication is not updated following original production.
- B. The timber notice of sale is a summary of sale information. For more specific information, interested parties are encouraged to view the Auction Packets on www.dnr.wa.gov. Auction Packets contain **DRAFT** copies of the timber notice of sale, map, contract, road plan, cruise data, precruise and cruise narrative, and other associated documents.
- C. Timber sale auction packets may also be obtained at no charge for individual sales by visiting the appropriate region office.
- D. Timber sale contracts contain extensive terms and conditions that will be binding upon successful high bidders. Each bidder should carefully review all terms contained in the appropriate **DRAFT** timber sale contract prior to bidding on a sale, and should review the final contract prior to signing. **DRAFT** timber sale contracts are contained in the auction packets and are available upon request at the respective region office.
- E. Sales advertised in this book are subject to the Board of Natural Resources approval before they will be sold. The Board meets and approves sales approximately six weeks prior to auction.
- F. The State does not guarantee the accuracy of any information contained herein pertaining to particular sales. Therefore, all prospective purchasers are expected to make their own independent inspections and appraisals prior to bidding.
- G. If any conflict exists between the information in the Timber Notice of Sale, timber sale map, sale auction packets and that in the timber sale contract, the signed contract will prevail.
- H. Purchasers must pay the Forest Excise Tax on the bid price, permanent road construction costs, and other considerations. The tax rate is 5% without the EARR credit and 4.2% with the credit. For more information contact the Department of Revenue, Forest Tax Section at 1-800-548-8829.
- I. **All sales are subject to confirmation by the DNR under RCW 79.15.120.**
- J. **Within 30 days of sale confirmation, the apparent high bidder will provide to the State the Performance Security specified on each Notice of Sale. The successful bidder also agrees to return a signed contract to the State within 30 days of confirmation.** Failure to provide a signed contract to the state within 30 days of confirmation may result in a loss of bidder's rights to the products sold and forfeiture of initial deposit moneys.
- K. Each DNR region office has information about sales offered in that region. For further information, contact the respective DNR region office. Region office addresses and telephone numbers appear on the back cover of this booklet.
- L. The purchaser assumes the responsibility for any costs associated with extra maintenance or repair levied by a county for any county road used by the purchaser.

Auction Time and Location

Auctions will start at 10:00 a.m. and close at 4:00 p.m. on the date and at the location specified in each Timber Notice of Sale.

Bidding Process

- A. All timber will be auctioned using the sealed bid method.
- B. Bids submitted on the day of auction must be in the bid box at the specified auction location before 10:00 a.m. The respective DNR region office must receive mailed bids by 4:30 p.m., on the last business day before the auction. Bidders assume all risk for the method of delivery.
- C. The DNR has the right to reject bid forms that are completed incorrectly. *All bid forms must have an original signature on behalf of the person or entity submitting the bid, and must be on the form provided in this booklet or a photocopy thereof. Revised documents are not permissible.* Bidding instructions are on the back of the Sealed Bid Form. A bid deposit must be included in the sealed bid envelope unless using a Timber Sale Statewide Bid Bond.
- D. All bids must include the completed Sealed Bid Form and bid deposit.
- E. Bids will be opened in each respective region in the order in which sales appear in the Public Auction Sale of Timber book (alphabetically by county and by agreement number). Sales added after the book is printed will be inserted to retain this order. Sort sales may be auctioned out of this sequence at the State's convenience.
- F. If a tie bid occurs, the names of the tie bidders will be placed in a hat and the successful bidder will be determined by a drawing.
- G. Opportunities to Withdraw Bids:
For all sales offered on a stumpage basis only, the apparent high bidder on a particular sale will have the option of withdrawing additional sealed bids submitted for any remaining sales to be auctioned. The apparent high bidder must exercise this option within two minutes after the apparent high bidder is announced. This option is not available for sales offered on a delivered basis.

Eligibility to Bid

The following criteria must be met in order to bid on State timber sales:

- 18 years of age (or have a co-signer who meets the eligibility requirements)
- Licensed to do business in the State of Washington
- Eligible to bid on Export Restricted timber
- Authorized to submit bids

Authorized Representatives

Company officers or company authorized representatives may bid on State sales, sign State documents, or sign checks. A list of authorized representatives and their specific authorities must be submitted, in writing, to the Department of Natural Resources, Product Sales and Leasing Division, P.O. Box 47014, Olympia, Washington, 98504-7014, ten days in advance of the auction. *A company owner or officer must sign this submittal.*

Bid Deposits

- A. Required bid deposits are listed on each Timber Notice of Sale.
- B. Bid deposits must be in the form of cash, certified check, cashiers' check, money order or bid bond.
- C. Bid bonds may be either a Timber Sale Per Sale Bid Bond or a Timber Sale Statewide Bid Bond.
- D. All bid deposits shall be submitted by the person or entity submitting the bid and made payable to the Department of Natural Resources. **Third party deposits will not be accepted.**

Timber Sale Per Sale Bid Bonds

- A. The Per Sale Bid Bond shall guarantee payment of the bid deposit **within ten days of auction.**
- B. The balance between the bid bond and the Initial Deposit payment is due **by 4:30 p.m., on the day of auction.**
- C. Additional forms and instructions for a Per Sale Bid Bond are available at any DNR region office.

Timber Sale Statewide Bid Bond

- A. Statewide Bid Bonds shall guarantee payment of the Initial Deposit on any statewide timber sale while the bond is in effect.
- B. The Statewide Bid Bond must be received by the Department of Natural Resources, Product Sales and Leasing Division, P.O. Box 47014, Olympia, Washington, 98504-7014, ten days in advance of the auction date. The bond shall be in the amount of \$150,000.00.
- C. Successful bidders using a Statewide Bid Bond must pay the total Initial Deposit payment (10% of the total bid price) **by 4:30 p.m., on the day of the auction.**
- D. A Statewide Bid Bond cannot be used to secure the Initial Deposit payment due the day of auction.
- E. Additional forms and instructions for a statewide bid bond are available at any DNR region office.

Payments

The initial deposit for a sale is 10% of the total bid value as submitted by the apparent high bidder (25% if the bidder is a defaulter as defined under WAC 332-140-300) and never less than \$5,000.00 for lump sum sales. For Lump Sum sales appraised at less than \$5,000.00, the entire bid value is due on day of auction.

- A. Apparent high bidders using cash, certified check, cashiers' check or money order as a bid deposit must pay the total Initial Deposit amount by 4:30 p.m. on auction day.
- B. Apparent high bidders using a Timber Sale Per Sale Bid Bond as a bid deposit must pay the difference between the bid deposit and the total initial deposit by 4:30 p.m., on the day of auction. The bid bond amount must be replaced with a certified check, cashiers' check, bank draft, cash, money order, or wire transfer within ten days of the auction.
- C. Apparent high bidders using a Timber Sale Statewide Bid Bond must pay the entire Initial Deposit amount by 4:30 p.m. on the day of auction.
- D. All payments must be in the form of a certified check, cashiers' check, bank draft, cash, money order or wire transfer.



Summary Report of All Sales for the Month of December 2022

Board Sales

<u>County</u>	<u>Region</u>	<u>Agree #</u>	<u>FSC® Sale Name</u>	<u>Volume</u>	<u>Value</u>
Lewis	Pacific Cascade	100840	BALTIMORE PLOT	9,907	\$2,975,000.00
Lewis	Pacific Cascade	102792	THYME MACHINE	8,030	\$2,946,000.00
Lewis	Pacific Cascade	103185	BELL OF THE BALL	1,962	\$581,000.00
Skagit	Northwest	102816	FANGORN	2,280	\$773,000.00
Skagit	Northwest	103351	BEAR BONES	1,478	\$266,000.00
Snohomish	Northwest	102160	V TWIN	4,898	\$496,000.00
Whatcom	Northwest	103275	BOX OF RAIN	1,518	\$434,000.00
			Total	<u>30,073</u>	<u>\$8,471,000.00</u>



Scan with your smartphone or tablet to go to the December 2022 timber auction page



TIMBER NOTICE OF SALE

SALE NAME: BALTIMORE PLOT

AGREEMENT NO: 30-100840

AUCTION: December 15, 2022 starting at 10:00 a.m., COUNTY: Lewis Pacific Cascade Region Office, Castle Rock, WA

SALE LOCATION: Sale located approximately 16 miles south of Oakville, WA

PRODUCTS SOLD AND SALE AREA:

All timber, except for leave trees bounded by yellow "Leave Tree Area" tags, individual leave trees marked with blue paint and all downed timber existing 5 years prior to the day of sale bound by the following:

Unit 1: White "Timber Sale Boundary" tags and pink "Timber Harvest Boundary" flagging, L-0900 and reprod;

Unit 2: White "Timber Sale Boundary" tags and pink "Timber Harvest Boundary" flagging;

All forest products above located on part(s) of Sections 32 and 33 all in Township 15 North, Range 5 West, W.M., containing 129 acres, more or less.

CERTIFICATION: This sale is certified under the Sustainable Forestry Initiative® program Standard (cert no: PwC-SFIFM-513)

ESTIMATED SALE VOLUMES AND QUALITY:

Table with columns: Species, Avg DBH, Ring Count, Total MBF, and MBF by Grade (1P, 2P, 3P, SM, 1S, 2S, 3S, 4S, UT). Rows include Douglas fir, Hemlock, Noble fir, Red alder, Redcedar, Maple, Spruce, and Sale Total.

MINIMUM BID: \$2,975,000.00 BID METHOD: Sealed Bids

PERFORMANCE SECURITY: \$100,000.00 SALE TYPE: Lump Sum

EXPIRATION DATE: October 31, 2024 ALLOCATION: Export Restricted

BID DEPOSIT: \$297,500.00 or Bid Bond. Said deposit shall constitute an opening bid at the appraised price.



TIMBER NOTICE OF SALE

HARVEST METHOD: Cable, Cable-Assist, and Shovel. This sale is estimated to be 70% ground based harvest systems and 30% cable/cable assist harvest systems. Ground based yarding equipment will not be permitted on sustained slopes over 45%. Self-leveling equipment will not be permitted on sustained slopes over 60%. Cable assist equipment will not be permitted on sustained slopes over 75%. For additional harvesting restrictions see Clause H-140 in the contract.

ROADS: 11.70 stations of required construction. 23.65 stations of optional construction. 221.50 stations of required prehaul maintenance. Rock used in accordance with the quantities on the ROCK LIST may be obtained from the Washtub Quarry, Section 34, T15N, R 05W, W.M. located on state land at no charge to the Purchaser. Purchaser shall obtain written approval from the Contract Administrator for the use of material from any other source.

Purchaser will manufacturing a 1000 cy stockpile of 4-inch jaw run. Road work will not be permitted from October 1 to April 30 unless authorized in writing by the Contract Administrator.

ACREAGE DETERMINATION

CRUISE METHOD: The sale acres were determined by GPS. The sale area was cruised using a variable plot cruise method.

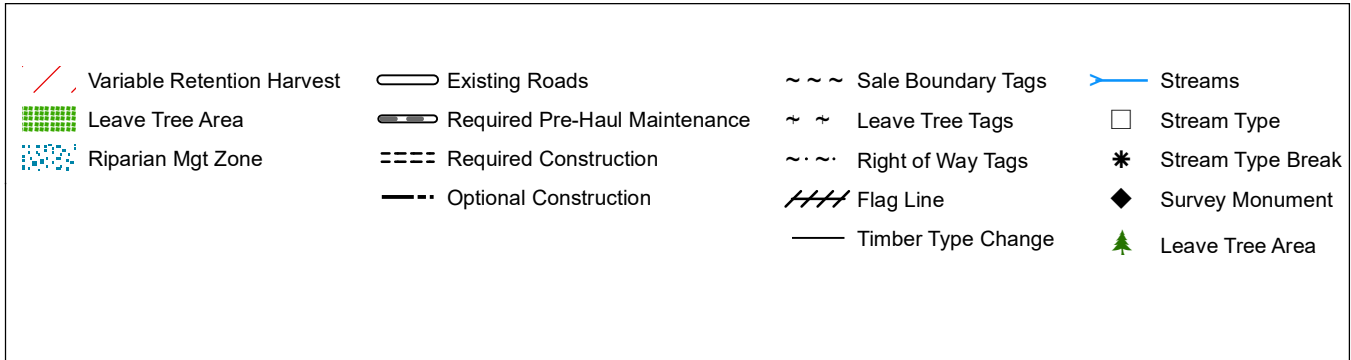
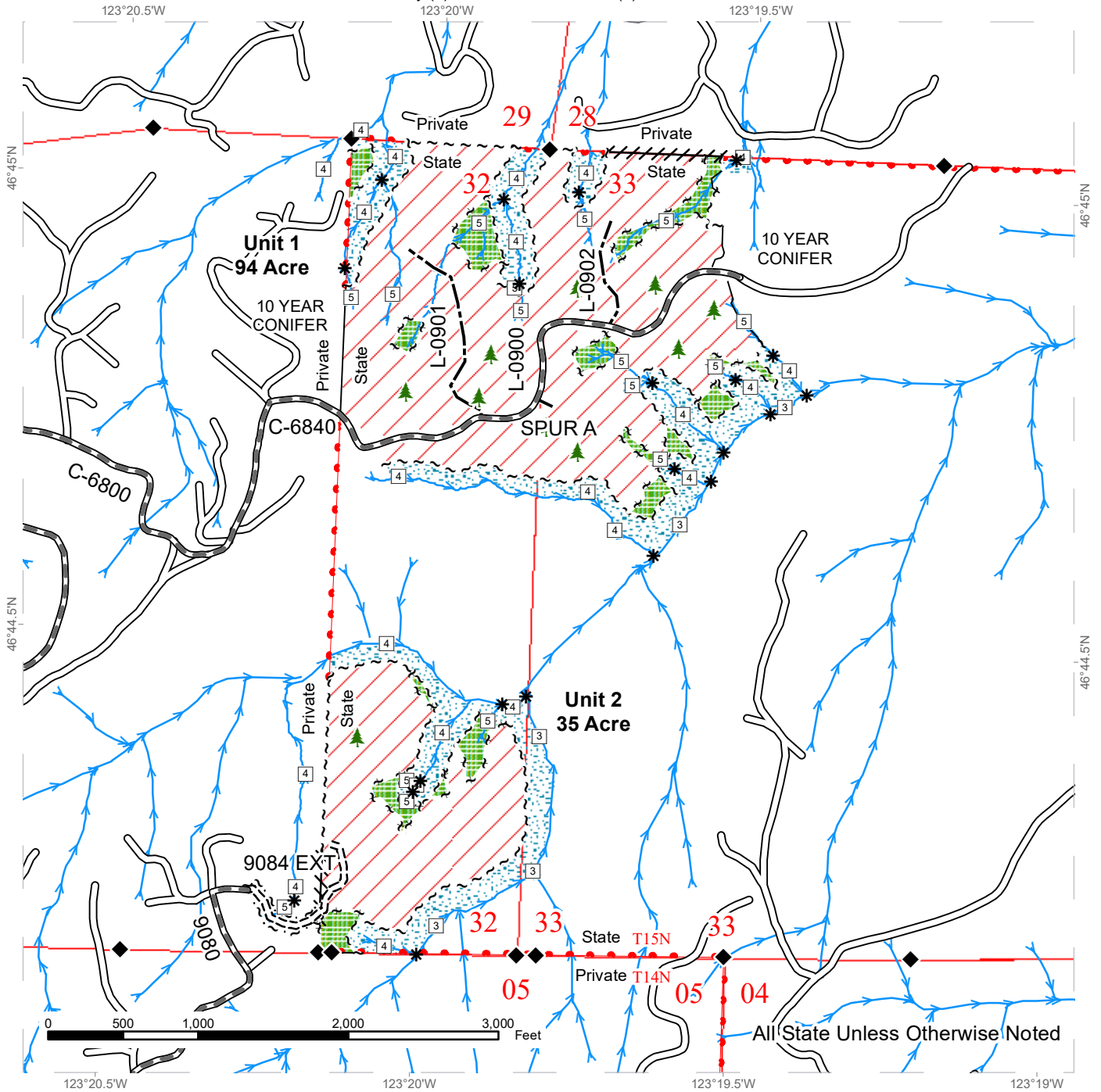
FEES: \$8,213.89 will be paid to Weyerhaeuser Timber Holdings, Inc within 30 days of timber sale auction. This fee will cover the cost for the RUP to access the 9880 and 9840 Extension roads. \$168,419.00 is due on day of sale. \$9.00 per MBF is due upon removal. These are in addition to the bid price.

SPECIAL REMARKS: This sale was designed with a minimum tower height of 70 feet on all cable settings in Unit 2.

TIMBER SALE MAP

SALE NAME: BALTIMORE PLOT
AGREEMENT #: 30-100840
TOWNSHIP(S): T15R5W
TRUST(S): Common School and Indemnity (3), State Forest Transfer (1)

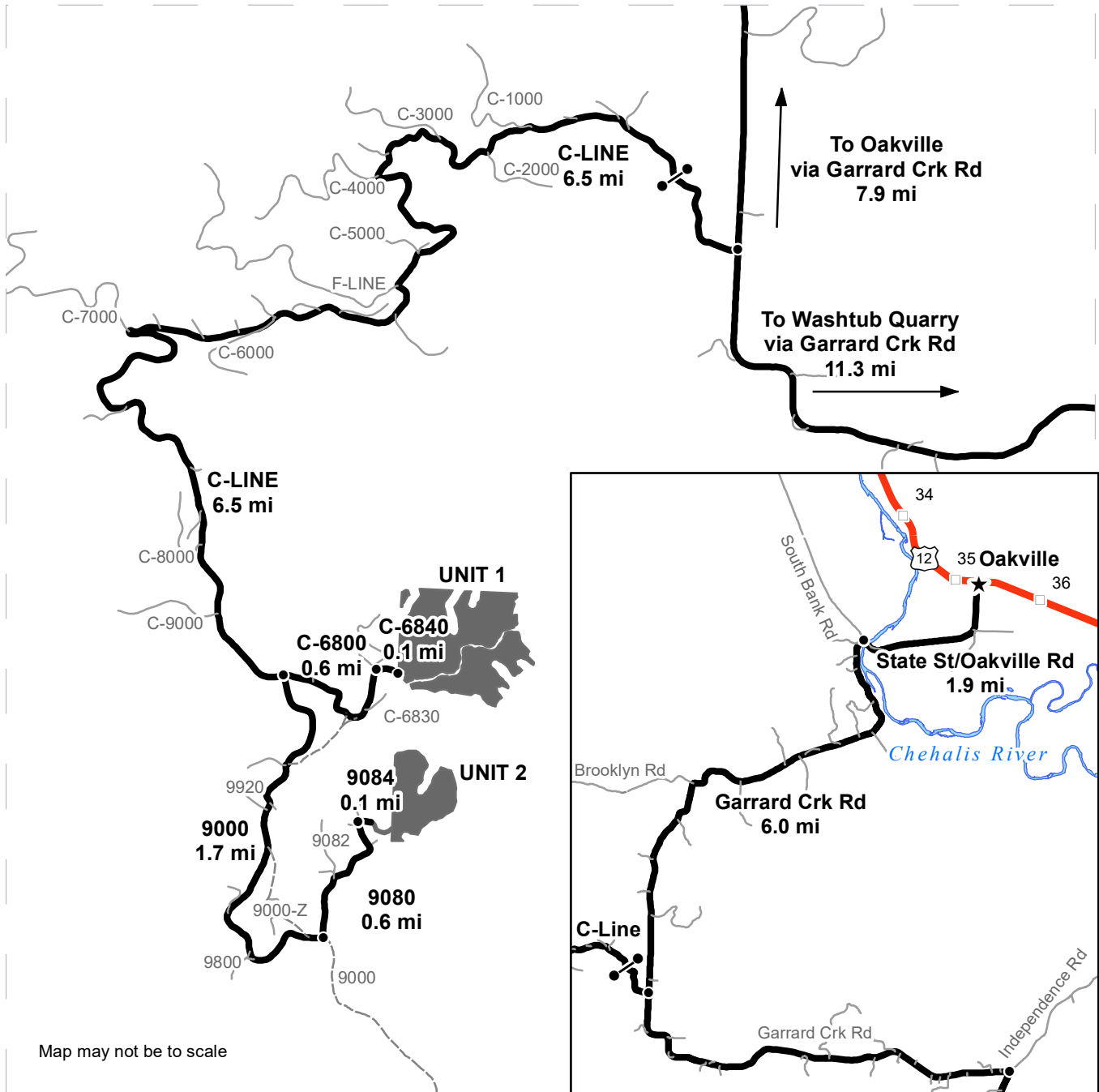
REGION: Pacific Cascade Region
COUNTY(S): Lewis
ELEVATION RGE: 1040-1920



DRIVING MAP

SALE NAME: BALTIMORE PLOT
AGREEMENT#: 30-100840
TOWNSHIP(S): T15R5W
TRUST(S): Common School and Indemnity (3), State Forest Transfer (1)

REGION: Pacific Cascade Region
COUNTY(S): Lewis
ELEVATION RGE: 1040-1920



Map may not be to scale

- Timber Sale Unit
- Haul Route
- Other Route
- View Only Route
- Distance Indicator
- Gate (PCP 1-1)
- Rock Pit

DRIVING DIRECTIONS:

From intersection of US-12/Pine and State St. in Oakville, head south on State St. for 1.9 miles, becoming Oakville Rd.
 From end of Oakville Rd., turn left onto Garrard Creek Rd. and follow 6.0 miles before turning right onto the C-Line.
 Follow C-Line for 6.5 miles to reach the junction with the C-6800 and the 9000 roads.
Unit 1
 From C-Line/C-6800/9000 junction, continue straight onto C-6800 for 0.6 miles.
 Turn right onto C-6840 and follow 0.1 miles to access Unit 1.
Unit 2
 From C-Line/C-6800/9000 junction, turn right onto 9000 and follow 1.7 miles.
 Turn left onto 9080 and continue 0.6 miles, turning right onto 9084 to access Unit 2.





TIMBER NOTICE OF SALE

SALE NAME: *THYME MACHINE*

AGREEMENT NO: 30-102792

AUCTION: December 15, 2022 starting at 10:00 a.m., **COUNTY:** Lewis
Pacific Cascade Region Office, Castle Rock, WA

SALE LOCATION: Sale located approximately 3 miles west of Pe Ell

**PRODUCTS SOLD
AND SALE AREA:**

All timber, except leave trees bound by yellow "Leave Tree Area" tags, leave trees marked with blue paint, and all down timber existing 10 years prior to the day of sale, and snags bounded by the following;

Unit 1: White "Timber Sale Boundary" tags with pink "Timber Harvest Boundary" flagging, reprod, private reprod, N-1300, N-1300A and McCormick Creek Road;

Unit 2: White "Timber Sale Boundary" tags with pink "Timber Harvest Boundary" flagging, reprod, private reprod, and N-1340;

Unit 3: Reprod, private reprod, N-1300 and N-1320;

Unit 4 (ROW), orange "Right of Way" tags with orange flagging and N-1000.

All forest products above located on part(s) of Sections 29, 31 and 32 all in Township 13 North, Range 5 West, W.M., containing 189 acres, more or less.

CERTIFICATION: This sale is certified under the Sustainable Forestry Initiative® program Standard (cert no: PwC-SFIFM-513)

ESTIMATED SALE VOLUMES AND QUALITY:

Species	Avg DBH	Ring Count	Total MBF	MBF by Grade								
				1P	2P	3P	SM	1S	2S	3S	4S	UT
Douglas fir	24	6	7,133				115		5,333	1,428	188	69
Red alder	16		589						214	122	205	48
Grand fir	20		215						169	36	10	
Hemlock	17		73						44	10	9	10
Maple	25		11						9		1	1
Spruce	25		6						5		1	
Cottonwood	33		3						3			
Sale Total			8,030									

MINIMUM BID: \$2,946,000.00 **BID METHOD:** Sealed Bids

PERFORMANCE SECURITY: \$100,000.00 **SALE TYPE:** Lump Sum

EXPIRATION DATE: October 31, 2024 **ALLOCATION:** Export Restricted

BID DEPOSIT: \$294,600.00 or Bid Bond. Said deposit shall constitute an opening bid at the appraised price.



TIMBER NOTICE OF SALE

HARVEST METHOD: Cable, Cable-Assist, Shovel, and Track skidder. This sale is estimated to be 5 percent cable/cable assist harvest systems and 95 percent ground based harvest systems. Ground based yarding equipment will not be permitted on sustained slopes over 40 percent. Cable assist equipment will not be permitted on sustained slopes over 75 percent. For additional harvesting restrictions see Clause H-140 in the contract.

ROADS: 60.60 stations of optional construction. 445.94 stations of required prehaul maintenance. 8.35 stations of abandonment, if built. Rock used in accordance with the quantities on the ROCK LIST may be obtained from the Walville Quarry (Sec 23 T13N R06W W.M) at no charge to the purchaser. For additional information see Road Plan 6-2. Rock used in accordance with the quantities on the ROCK LIST may be obtained from any commercial source at the Purchaser's expense. Rock sources are subject to written approval by the Contract Administrator before their use. For additional information see Road Plan 6-5. Purchaser shall conduct rock source development in accordance with Rock Source Development Plan. See Road Plan 6-10 for additional information.

Purchaser shall create 2,000 c.y. stockpile of 1.25-inch minus and 1,000 c.y. stockpile of 4-inch rock. Pre-haul maintenance and new construction work will be restricted from October 1 to May 31. See Road Plan 1-25 for additional information. The hauling of forest products will not be permitted from November 1 to April 30 unless authorized in writing by the Contract Administrator.

ACREAGE DETERMINATION

CRUISE METHOD: The sale acres were determined by GPS delineation. Cruise was completed using variable plot cruise methods.

FEES: \$136,510.00 is due on day of sale. \$9.00 per MBF is due upon removal. These are in addition to the bid price.

SPECIAL REMARKS: This sale contains approximately 115 MBF DF special mill, 1,193 MBF high quality DF 2 Saw, 278 MBF high quality DF 3 saw. See Cruise for additional for additional information.

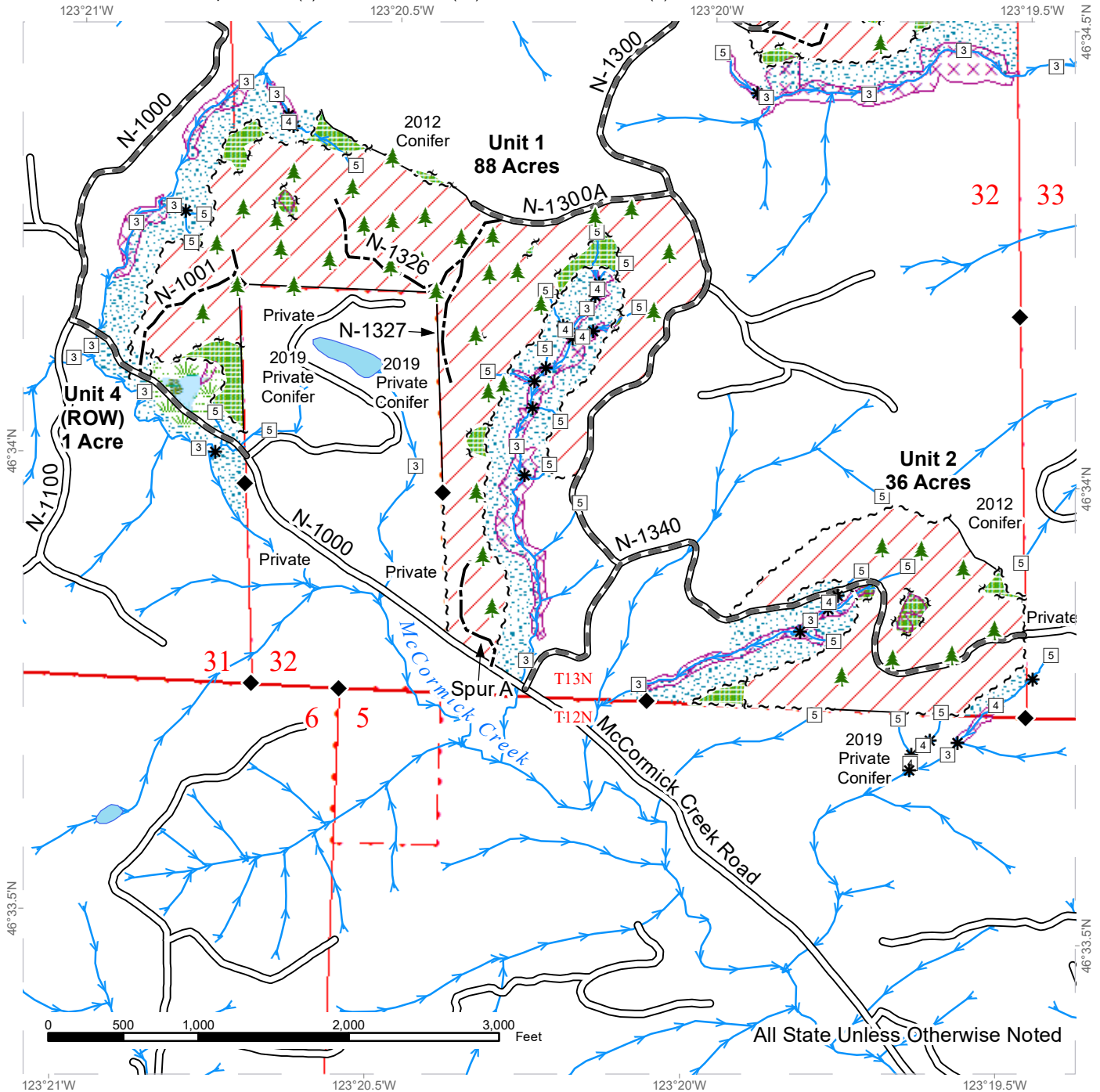
Purchaser responsible for obtaining Road Approach Permit from Lewis County.

Purchaser's responsibility to identify any utilities not listed. Purchaser shall work in accordance with all applicable laws or rules concerning utilities. Purchaser is responsible for all notification, including "call before you dig", and liabilities associated with the Utilities and their rights of way.

TIMBER SALE MAP

SALE NAME: THYME MACHINE
AGREEMENT #: 30-102792
TOWNSHIP(S): T13R5W
TRUST(S): Capitol Grant (7), Scientific School (10), State Forest Transfer (1)

REGION: Pacific Cascade Region
COUNTY(S): Lewis
ELEVATION RGE: 520-840



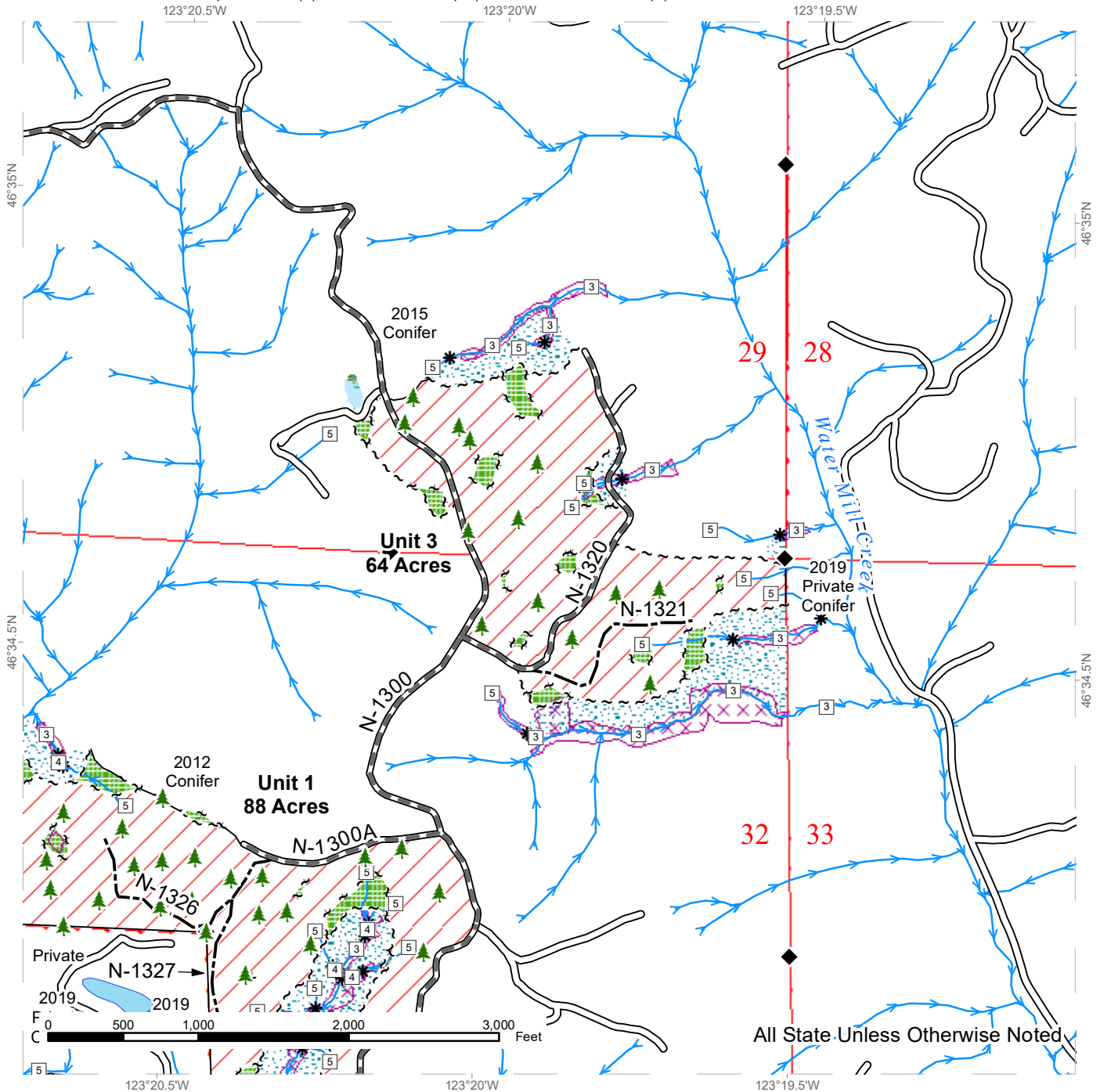
Variable Retention Harvest	Existing Roads	Streams
Leave Tree Area	Required Pre-Haul Maintenance	Stream Type
Riparian Mgt Zone	Optional Construction	Stream Type Break
Forested Wetland	Sale Boundary Tags	Survey Monument
Wetland Mgt Zone	Leave Tree Tags	Leave Tree Area <1/4-acre
Potentially Unstable Slopes	Right of Way Tags	
DNR Managed Lands	Timber Type Change	



TIMBER SALE MAP

SALE NAME: THYME MACHINE
AGREEMENT #: 30-102792
TOWNSHIP(S): T13R5W
TRUST(S): Capitol Grant (7), Scientific School (10), State Forest Transfer (1)

REGION: Pacific Cascade Region
COUNTY(S): Lewis
ELEVATION RGE: 520-840



All State Unless Otherwise Noted

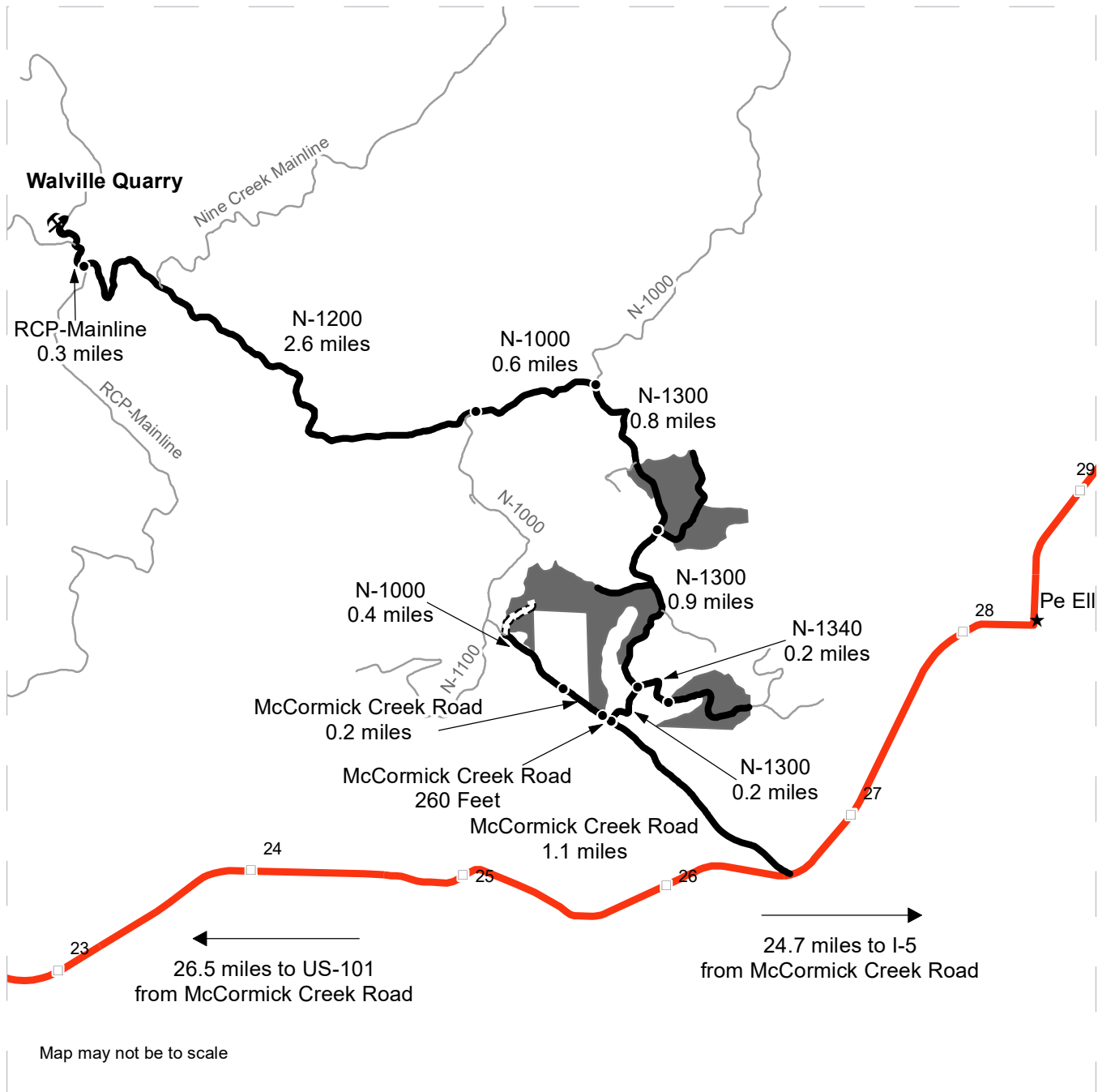
	Variable Retention Harvest		Existing Roads		Streams
	Leave Tree Area		Required Pre-Haul Maintenance		Stream Type
	Riparian Mgt Zone		Optional Construction		Stream Type Break
	Forested Wetland		Sale Boundary Tags		Survey Monument
	Wetland Mgt Zone		Leave Tree Tags		Leave Tree Area <1/4-acre
	Potentially Unstable Slopes		Right of Way Tags		
	DNR Managed Lands		Timber Type Change		



DRIVING MAP

SALE NAME: THYME MACHINE
AGREEMENT#: 30-102792
TOWNSHIP(S): T13R5W
TRUST(S): Capitol Grant (7), Scientific School (10), State Forest Transfer (1)

REGION: Pacific Cascade Region
COUNTY(S): Lewis
ELEVATION RGE: 520-840



Map may not be to scale

- Timber Sale Unit
- Highway
- Haul Route
- New Road/ROW U4
- Other Road
- Milepost Markers
- Distance Indicator
- Rock Pit
- Town

DRIVING DIRECTIONS:

Units 1, 2, 3, and 4 (ROW):

At MM 26.5 on SR 6, head northwest on McCormick Creek Road. Drive 1.1 miles to the N-1300 junction. Continue on McCormick Creek Road for 260 feet to **Unit 1** on the right. Continue on McCormick Creek Road for 0.2 miles and continue straight on to the N-1000 (gravel road) for 0.4 miles to **Unit 4 (ROW)** on the right. At the McCormick Creek Road and N-1000 junction, turn on to the N-1000. Continue for 0.6 miles and stay to the right on to the N-1200. Continue for 2.6 miles and turn right on to the RCP-Mainline. Continue for 0.3 miles to **Walville Quarry**.

Walville Quarry:

Continue from the last instruction and past Unit 3 for 0.8 miles on the N-1300 and turn left on to the N-1000. Continue for 0.6 miles and stay to the right on to the N-1200. Continue for 2.6 miles and turn right on to the RCP-Mainline. Continue for 0.3 miles to **Walville Quarry**.





TIMBER NOTICE OF SALE

SALE NAME: BELL OF THE BALL

AGREEMENT NO: 30-103185

AUCTION: December 15, 2022 starting at 10:00 a.m., **COUNTY:** Lewis
Pacific Cascade Region Office, Castle Rock, WA

SALE LOCATION: Sale located approximately 7 miles south of Mossyrock, WA

**PRODUCTS SOLD
AND SALE AREA:**

All timber, except leave trees bound by yellow "Leave Tree Area" tags, leave trees marked with blue paint, all timber existing 5 years prior to the day of sale, all downed timber greater than 48 inches, bounded by the following;

Unit 1: White "Timber Sale Boundary" tags, pink flagging, the W-1000, property line marked with white carsonite posts and pink flagging and trees banded with orange paint;

Unit 2: White "Timber Sale Boundary" tags with pink flagging, property line marked with white carsonite posts and pink flagging and Longbell Road (incorporates Private RUP);

Unit 3: White "Timber Sale Boundary" tags, pink flagging and Longbell Road;

Unit 4: White "Timber Sale Boundary" tags, pink flagging and non-forested private property;

Unit 5: White "Timber Sale Boundary" tags, pink flagging and private property line delineated by a barbed wire fence;

Unit 6 ROW: Orange "Right of Way" tags and orange flagging;

All forest products above located on part(s) of Sections 2 and 3 all in Township 11 North, Range 2 East, Sections 34 and 35 all in Township 12 North, Range 2 East, W.M., containing 74 acres, more or less.

CERTIFICATION: This sale is certified under the Sustainable Forestry Initiative® program Standard (cert no: PwC-SFIFM-513)

ESTIMATED SALE VOLUMES AND QUALITY:

Species	Avg DBH	Ring Count	Total MBF	MBF by Grade								
				1P	2P	3P	SM	1S	2S	3S	4S	UT
Douglas fir	16.6	6	1,735						662	864	168	41
Red alder	12		100						10	12	41	37
Hemlock	16.8		55						19	25	8	3
Redcedar	33.9		30							30		
Maple	11		21								21	
Cottonwood	19.1		19						16			3
Other Hardwood	10		2								2	
Sale Total			1,962									

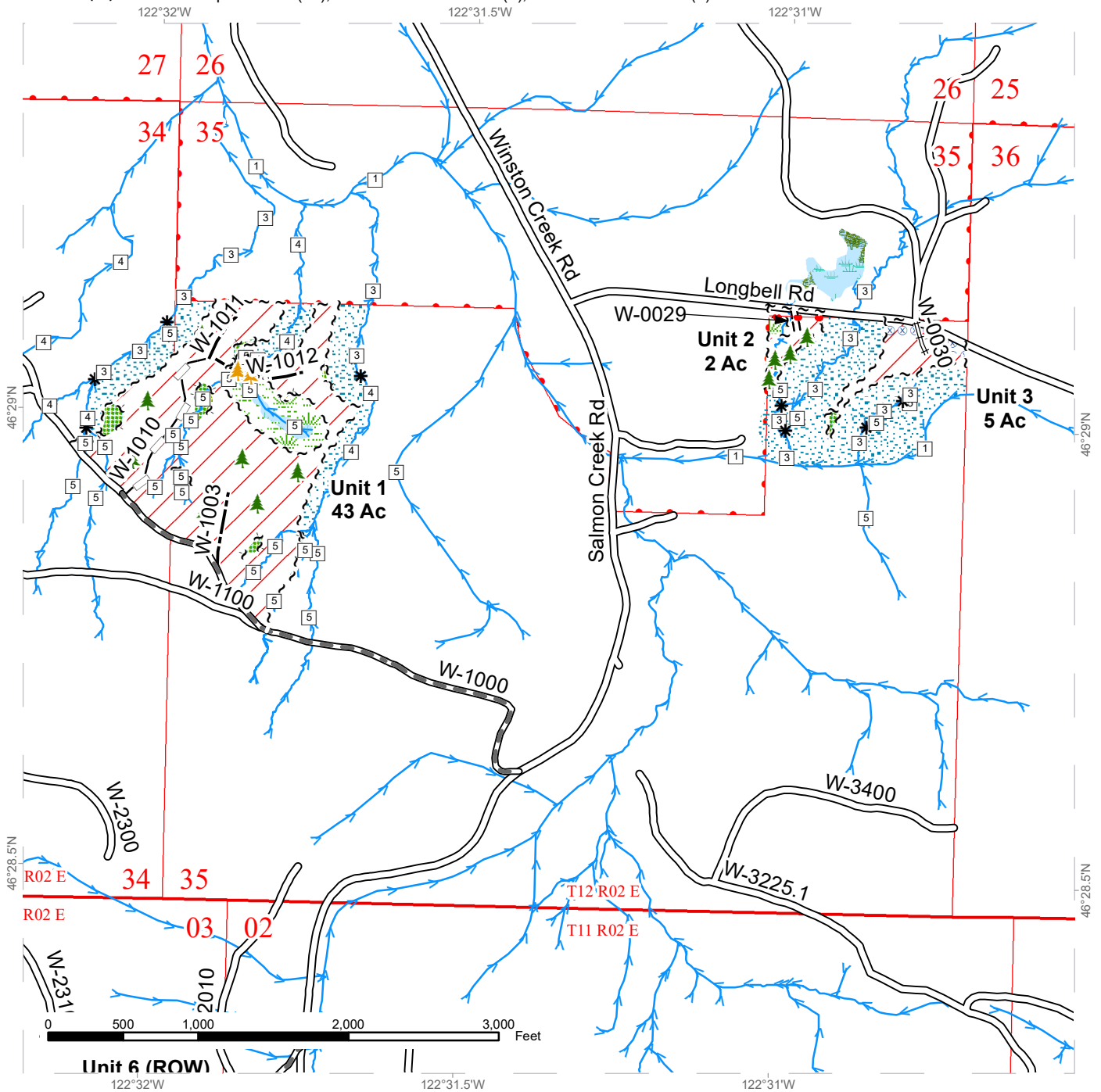
MINIMUM BID: \$581,000.00

BID METHOD: Sealed Bids

TIMBER SALE MAP

SALE NAME: BELL OF THE BALL
AGREEMENT #: 30-103185
TOWNSHIP(S): T12R2E
TRUST(S): Capitol Grant (07), State Forest Purchase (2), State Forest Transfer (1)

REGION: Pacific Cascade Region
COUNTY(S): Lewis
ELEVATION RGE: 600-991



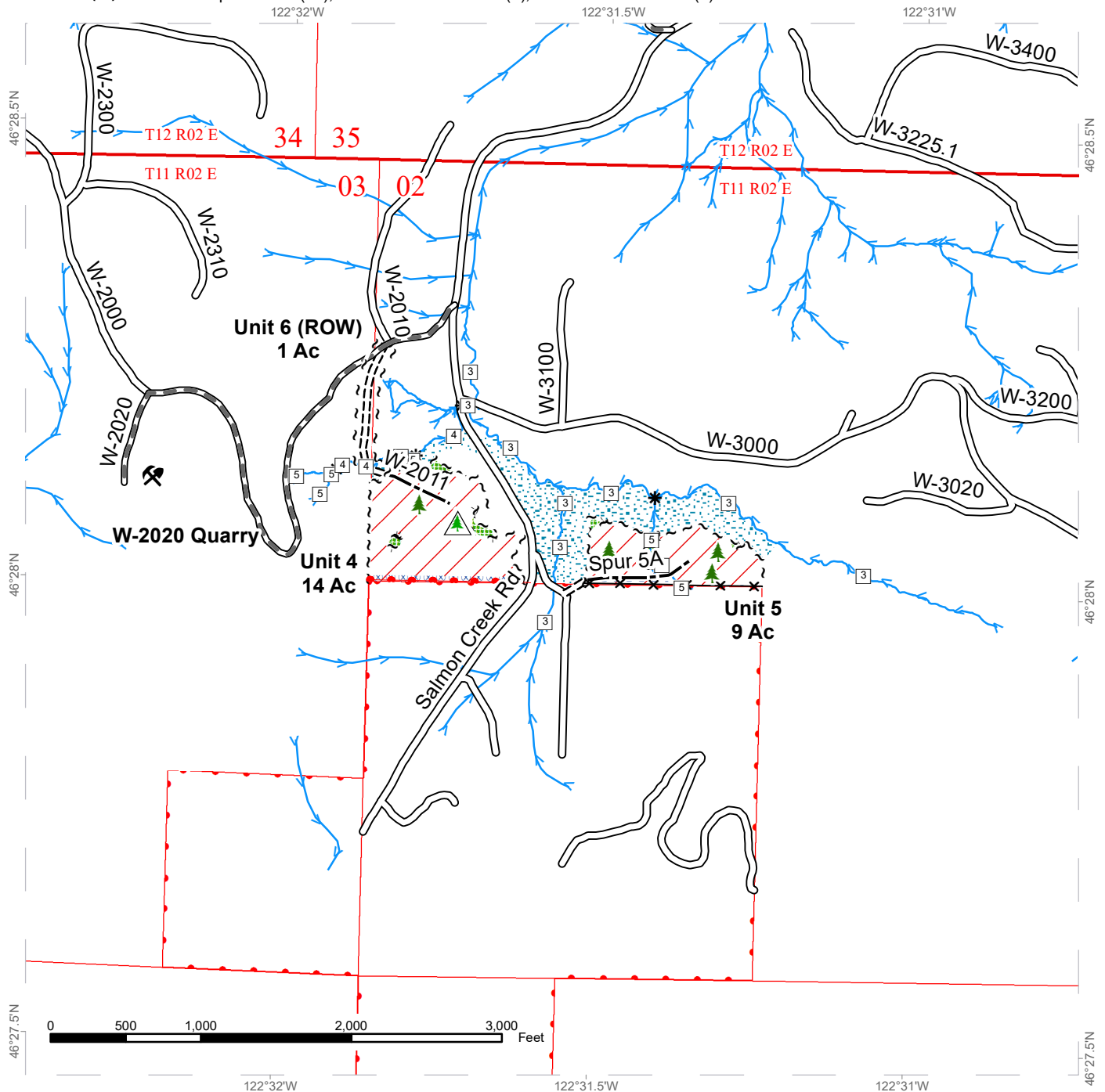
Variable Retention Harvest	Sale Boundary Tags	Streams
Leave Tree Area	Leave Tree Tags	Stream Type
Riparian Mgt Zone	Property Line	Stream Type Break
Forested Wetland	Existing Roads	Orange Banded Take Trees
Wetland Mgt Zone	Required Pre-Haul Maintenance	Leave Tree Area <1/4-acre
Hazard Abatement Area	Required Construction	
	Required Reconstruction	
	Optional Construction	
	Optional Reconstruction	



TIMBER SALE MAP

SALE NAME: BELL OF THE BALL
AGREEMENT #: 30-103185
TOWNSHIP(S): T11R2E
TRUST(S): Capitol Grant (07), State Forest Purchase (2), State Forest Transfer (1)

REGION: Pacific Cascade Region
COUNTY(S): Lewis
ELEVATION RGE: 600-991



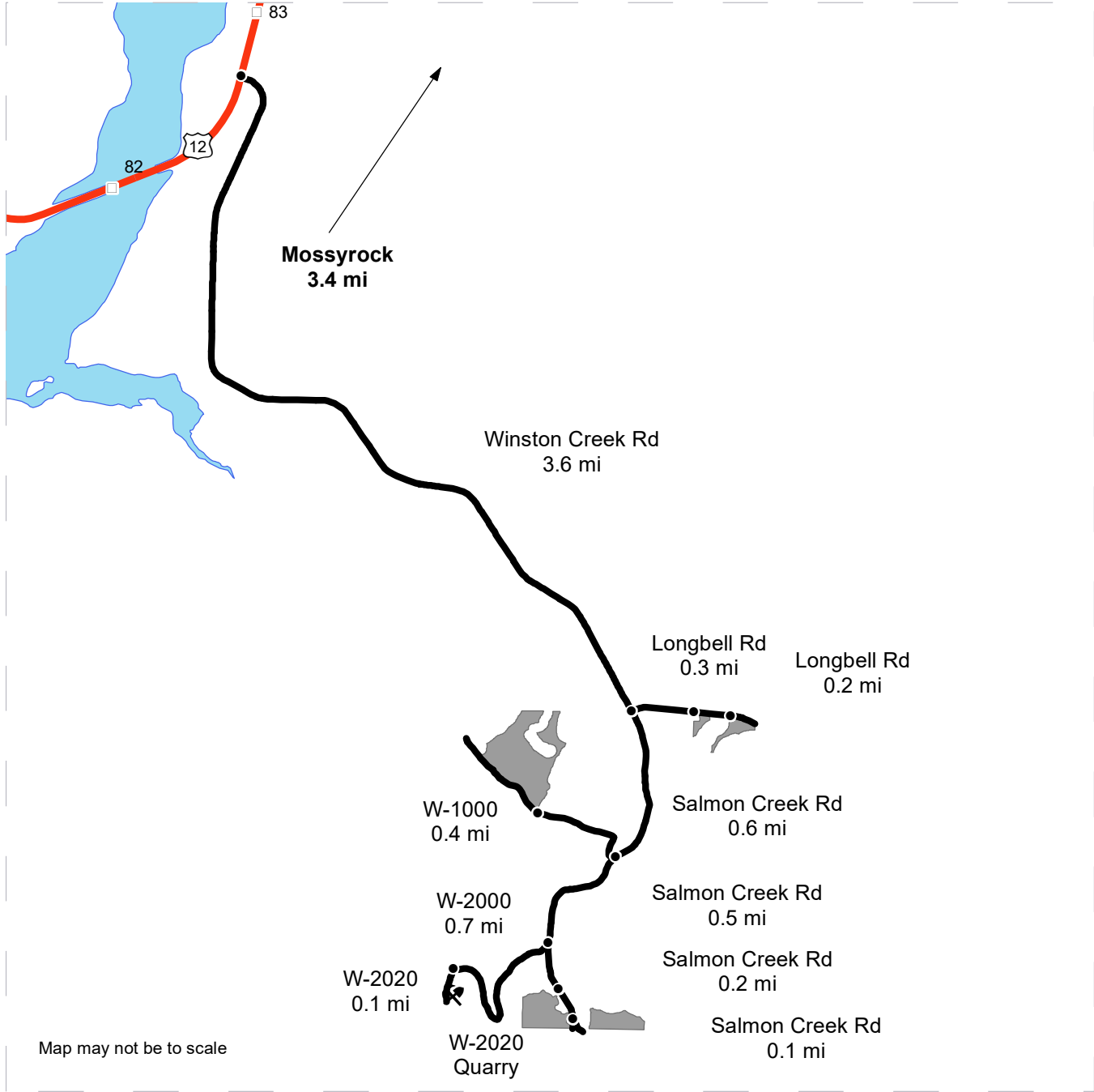
Variable Retention Harvest	Sale Boundary Tags	Streams
Leave Tree Area	Leave Tree Tags	Stream Type
Riparian Mgt Zone	Right of Way Tags	Stream Type Break
Hazard Abatement Area	Property Line	Leave Tree Area <1/4-acre
	Fence	Non-Tradeable Leave Trees
	Existing Roads	Rock Pit
	Required Pre-Haul Maintenance	
	Required Construction	
	Optional Construction	



DRIVING MAP

SALE NAME: BELL OF THE BALL
AGREEMENT#: 30-103185
TOWNSHIP(S): T11R2E,T12R2E
TRUST(S): Capitol Grant (7), State Forest Purchase (2), State Forest Transfer (1)

REGION: Pacific Cascade Region
COUNTY(S): Lewis
ELEVATION RGE: 600-991



Map may not be to scale

	Timber Sale Unit
	Haul Route
	Milepost Markers
	HWY 12
	Distance Indicator
	Rock Pit

DRIVING DIRECTIONS:

Between MP 82 and 83 on Highway 12, turn east onto Winston Creek Rd. Follow Winston Creek Rd. for 3.6 miles. To reach Unit 2, turn left onto Longbell Rd. for 0.3 miles. To reach Unit 3, follow Longbell Rd. for an additional 0.2 miles. To reach Unit 1, continue along Salmon Creek Rd. for 0.6 miles to the W-1000. Turn right into the W-1000 and travel for 0.4 miles to Unit 1. To reach Unit 4, continue along Salmon Creek Rd. for 0.7 miles from the W-1000 junction. To reach Unit 5, continue along Salmon Creek Rd. for 0.1 miles to the private drive on the left.





TIMBER NOTICE OF SALE

SALE NAME: FANGORN

AGREEMENT NO: 30-102816

AUCTION: December 14, 2022 starting at 10:00 a.m., COUNTY: Skagit Northwest Region Office, Sedro Woolley, WA

SALE LOCATION: Sale located approximately 14 miles northeast of Hamilton, WA.

PRODUCTS SOLD AND SALE AREA: All timber bounded by white timber sale boundary tags, property lines and the GR-06 Road, except cedar salvage (cedar snags, preexisting dead and down cedar trees and cedar logs), trees marked with blue paint on the bole and root collar, and forest products tagged out by yellow leave tree area tags in the Unit.

All forest products above located on part(s) of Sections 22 all in Township 36 North, Range 8 East, W.M., containing 82 acres, more or less.

CERTIFICATION: This sale is certified under the Sustainable Forestry Initiative® program Standard (cert no: PwC-SFIFM-513)

ESTIMATED SALE VOLUMES AND QUALITY:

Table with columns: Species, Avg DBH, Ring Count, Total MBF, and MBF by Grade (1P, 2P, 3P, SM, 1S, 2S, 3S, 4S, UT). Rows include Douglas fir, Hemlock, and Sale Total.

MINIMUM BID: \$773,000.00 BID METHOD: Sealed Bids

PERFORMANCE SECURITY: \$100,000.00 SALE TYPE: Lump Sum

EXPIRATION DATE: March 31, 2025 ALLOCATION: Export Restricted

BID DEPOSIT: \$77,300.00 or Bid Bond. Said deposit shall constitute an opening bid at the appraised price.

HARVEST METHOD: Cable; shovel, tracked skidder, or "6-wheeled rubber tired skidders with over-the-tire tracks spanning both sets of rear tires" on sustained slopes 40% or less; self-leveling equipment on sustained slopes 55% or less; tethered equipment may be utilized (See below for restrictions); also, a feller-buncher may be utilized on sustained slopes 40% or less.

Purchaser must obtain prior written approval from the Contract Administrator for areas as to where to utilize tethered equipment prior to use. If ground disturbance is causing excessive damage, as determined by the Contract Administrator, the equipment will no longer be authorized. Falling and Yarding will not be permitted from November 1 to March 31 unless authorized in writing by the Contract Administrator (THIS PERTAINS TO GROUND-BASED EQUIPMENT ONLY) to reduce soil damage and erosion.



TIMBER NOTICE OF SALE

ROADS: 17.55 stations of required construction. 225.50 stations of required prehaul maintenance.

Rock may be obtained from the following source(s) on State land at no charge to the Purchaser: Picnic Basket Pit at station 125+00 of the DK-ML Road.

Development of an existing rock source will involve drilling, shooting, and processing rock to generate riprap and 3-inch-minus ballast rock.

An estimated total quantity of rock needed for this proposal: 30 cubic yards of riprap and 930 cubic yards of ballast rock.

The hauling of rock and the hauling of forest products will not be permitted from November 1 to March 31; this will not be waived. All remaining road work will not be permitted from November 1 to March 31 unless authorized in writing by the Contract Administrator.

ACREAGE DETERMINATION

CRUISE METHOD: Acres determined by GPS traverse for unit (existing road deduction was calculated with GIS for length multiplied by the average width measured on site. Cruise was conducted via variable plot sample type. Cruise acres are based on FMA (Forest Management Activity) acres including leave tree areas. Leave tree volume is not included in the cruise. See Cruise Narrative for further details. Shapefiles of units are available upon request, and on the DNR website after the BNR meeting in which the sale is presented.

FEES: \$38,760.00 is due on day of sale. \$9.00 per MBF is due upon removal. These are in addition to the bid price.

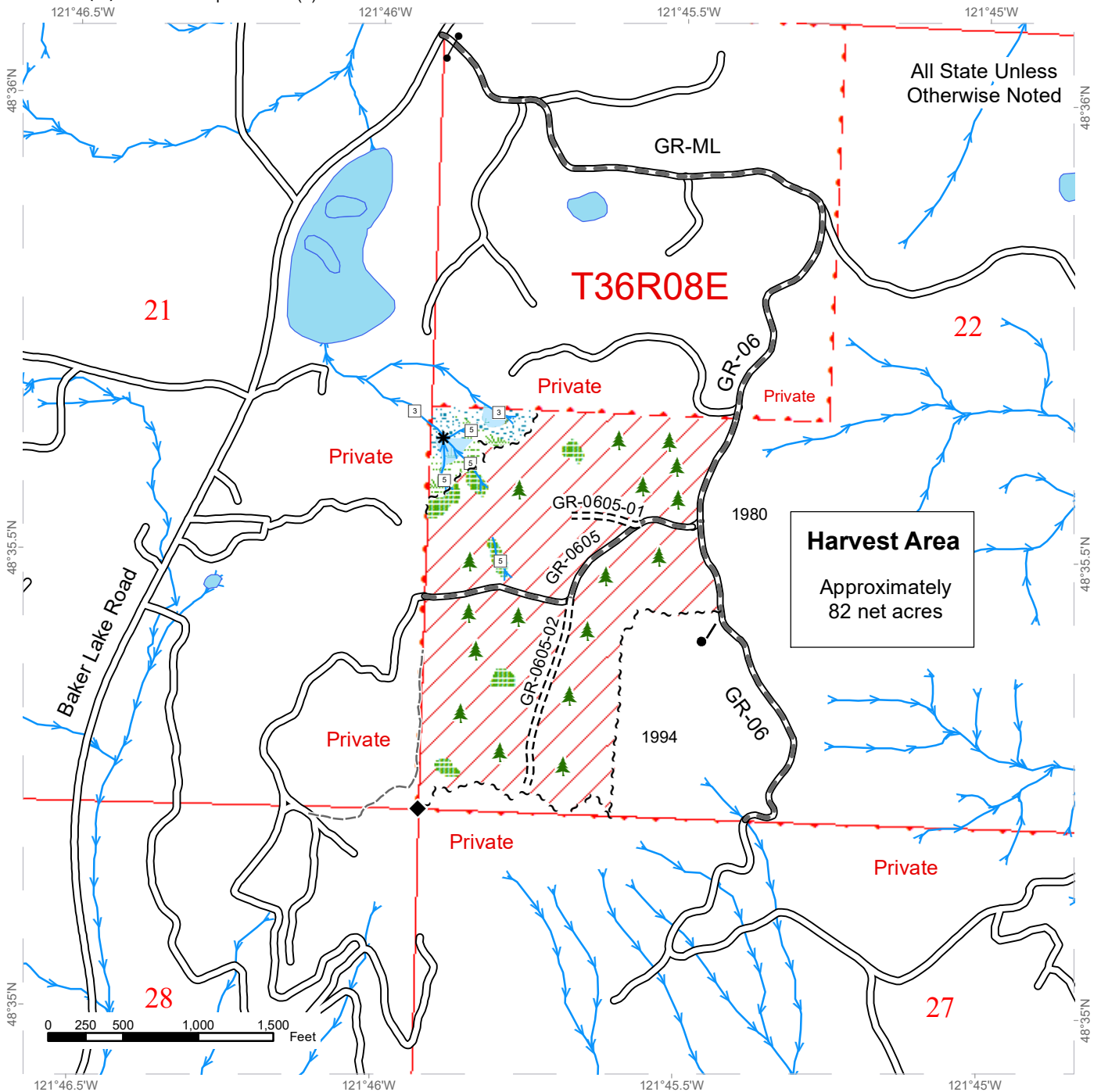
SPECIAL REMARKS:

1. Trees marked with orange paint ("X") represent the last take tree along property line boundaries.
2. The sale was set up with the intention for ground-based yarding.

TIMBER SALE MAP

SALE NAME: FANGORN
AGREEMENT #: 30-102816
TOWNSHIP(S): T36R8E
TRUST(S): Capitol Grant (7)

REGION: Northwest Region
COUNTY(S): Skagit
ELEVATION RGE: 1240-1480



Harvest Area
 Approximately
 82 net acres

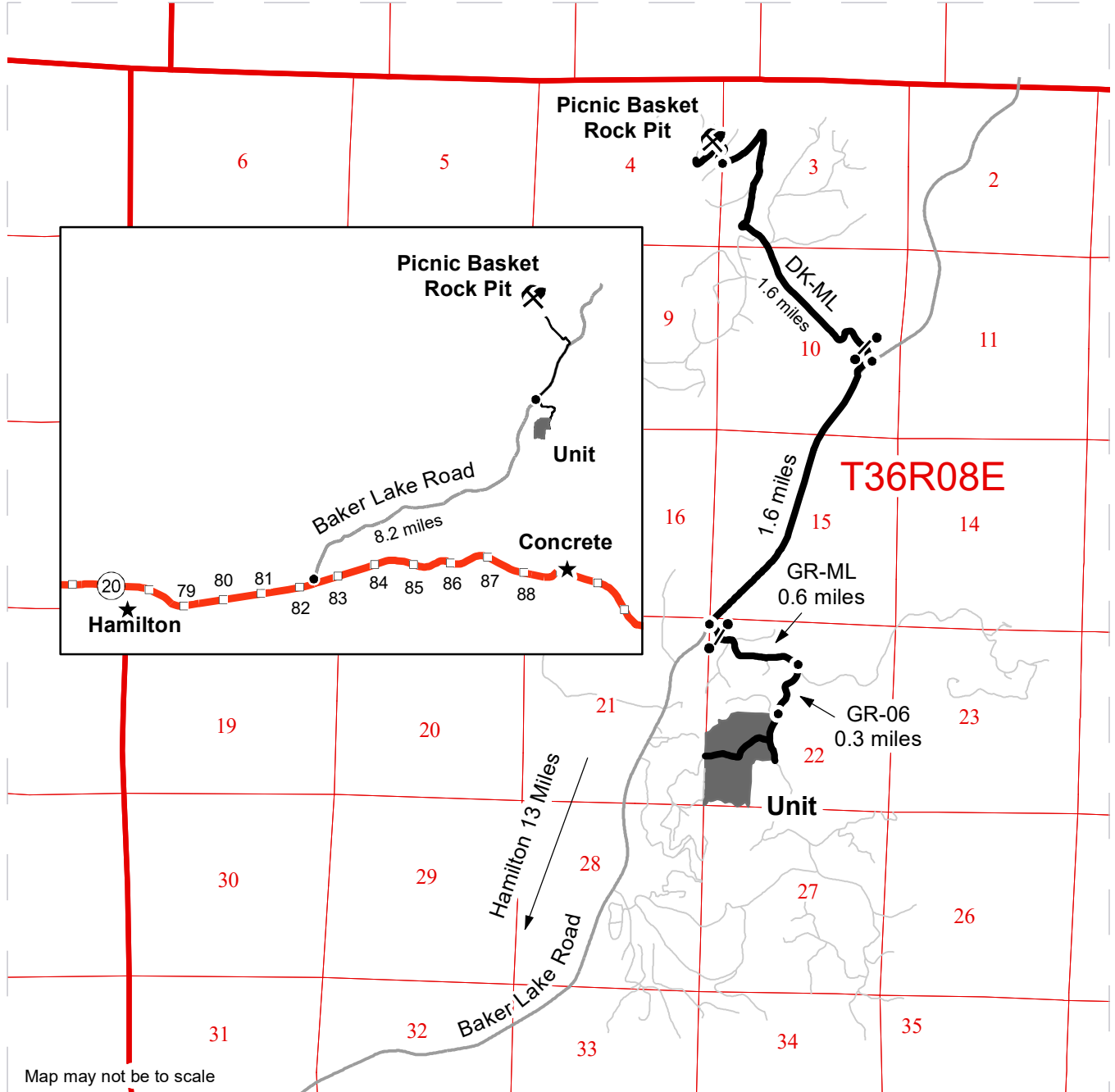
Sale Area	Sale Boundary Tags	Streams
Leave Tree Area	Existing Roads	Survey Monument
Riparian Mgt Zone	Required Pre-Haul Maintenance	Leave Tree Area <1/4-acre
Forested Wetland	Old Grades/Trails	Stream Type
Wetland Mgt Zone	Required Construction	Stream Type Break
DNR Managed Lands		



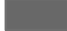




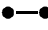

DRIVING MAP

SALE NAME: FANGORN
 AGREEMENT#: 30-102816
 TOWNSHIP(S): T36R08E
 TRUST(S): Capitol Grant (7)

REGION: Northwest Region
 COUNTY(S): Skagit
 ELEVATION RGE: 1240-1480



Map may not be to scale

-  Timber Sale Unit
-  Highway
-  Haul Route
-  Other Roads
-  Rock Pit
-  Gate (F 1-3)
-  Distance Indicator

DRIVING DIRECTIONS:

From Hamilton travel 5 miles East and turn North onto Baker Lake Road. Continue for 8.2 miles to the junction of Baker Lake road and the GR-ML.

To Unit:
 Turn right onto GR-ML and continue for 0.6 miles.
 Turn right onto GR-06 and continue for 0.3 miles to Unit.

To Picnic Basket Rock Pit:
 From the junction with the GR-ML
 Continue 1.6 miles on Baker Lake Rd
 Then turn left onto DK mainline and continue 1.6 miles to Rock Pit.





TIMBER NOTICE OF SALE

SALE NAME: BEAR BONES

AGREEMENT NO: 30-103351

AUCTION: December 14, 2022 starting at 10:00 a.m., COUNTY: Skagit Northwest Region Office, Sedro Woolley, WA

SALE LOCATION: Sale located approximately 23 miles southwest of Sedro-Woolley, WA.

PRODUCTS SOLD AND SALE AREA:

All timber bounded by white timber sale boundary tags, flagline, jeep trail, and the BR-3802-08 Road, except cedar salvage (cedar snags, preexisting dead and down cedar trees and cedar logs), trees marked with blue paint on the bole and root collar, forest products tagged out by blue special management tags (WMZs/RMZs), and forest products tagged out by yellow leave tree area tags in Unit #1 (collectively labeled Unit 1A, Unit 1A RMZ 1, Unit 1A RMZ 2, Unit 1A WMZ 1, Unit 1A WMZ 2, Unit 1A WMZ 3, Unit 1A WMZ 4, Unit 1B, Unit 1B RMZ 1).

All timber as described for removal in Schedule B located in the RMZ/WMZ thinning areas (beyond the blue special management tags up to the white timber sale boundary tags and/or BR-3802-08 Road) within Unit #1.

All timber bounded by white timber sale boundary tags and BR-3809 Road, except cedar salvage (cedar snags, preexisting dead and down cedar trees and cedar logs), trees marked with blue paint on the bole and root collar, and forest products tagged out by yellow leave tree area tags in Unit #2.

All timber within 12 feet of centerline of roads to be constructed, except that title to the timber within the right-of-way associated with areas of road construction (located outside of units) is not conveyed to the Purchaser unless the road segment is actually constructed.

All forest products above located on part(s) of Sections 2, 3 and 11 all in Township 33 North, Range 5 East, W.M., containing 58 acres, more or less.

CERTIFICATION: This sale is certified under the Sustainable Forestry Initiative® program Standard (cert no: PwC-SFIFM-513)

ESTIMATED SALE VOLUMES AND QUALITY:

Table with columns: Species, Avg DBH, Ring Count, Total MBF, and MBF by Grade (1P, 2P, 3P, SM, 1S, 2S, 3S, 4S, UT). Rows include Hemlock, Douglas fir, Redcedar, Silver fir, Red alder, Cottonwood, Maple, and Sale Total.

MINIMUM BID: \$266,000.00 BID METHOD: Sealed Bids

PERFORMANCE SECURITY: \$53,200.00 SALE TYPE: Lump Sum



TIMBER NOTICE OF SALE

EXPIRATION DATE: March 31, 2024

ALLOCATION: Export Restricted

BID DEPOSIT: \$26,600.00 or Bid Bond. Said deposit shall constitute an opening bid at the appraised price.

HARVEST METHOD: Cable OR tethered equipment; cable, shovel, "6-wheeled rubber tired skidders with over-the-tire tracks spanning both sets of rear tires", tracked skidder, or rubber tired skidder on sustained slopes 35% or less; self-leveling equipment on sustained slopes 50% or less; also, tracked machinery may be utilized for felling on sustained slopes 35% or less. Falling and Yarding will not be permitted from November 1 to March 31 unless authorized in writing by the Contract Administrator (THIS PERTAINS TO GROUND-BASED EQUIPMENT ONLY) to reduce soil damage and erosion.

ROADS: 12.38 stations of required construction. 7.61 stations of required reconstruction. 6.99 stations of optional construction. 30.68 stations of optional reconstruction. 326.84 stations of required prehaul maintenance. 38.29 stations of abandonment. 19.37 stations of abandonment, if built.

Rock may be obtained from the following source(s) on State land at no charge to the Purchaser: West Bear Pit at station 10+03 of the BR-3802-05 Road.

Development of an existing rock source will involve drilling, shooting, and processing rock. Stockpiles are available for use (2-inch-minus crushed rock, 3-inch-minus ballast, shotrock, riprap. See road plan.)

An estimated total quantity of rock needed for this proposal: 80 cubic yards of riprap, 250 cubic yards of 2-inch-minus crushed rock and 4,235 cubic yards of 3-inch-minus ballast rock.

Road work and the hauling of rock will not be permitted from November 1 to March 31 unless authorized in writing by the Contract Administrator to reduce soil damage and siltation. The hauling of forest products will not be permitted from November 1 to March 31 unless authorized in writing by the Contract Administrator to reduce soil damage and siltation.

ACREAGE DETERMINATION

CRUISE METHOD: Acres determined by GPS traverse for units and length x width calculation for right-of-way. Cruise was conducted via variable plot sample type, as well as 1/20 acre fixed plot for right-of-way. Cruise acres are based on FMA (Forest Management Activity) acres including leave tree areas. Leave tree volume is not included in the cruise. See Cruise Narrative for further details. Shapefiles of units are available upon request, and on the DNR website after the BNR meeting in which the sale is presented.

FEES: \$25,126.00 is due on day of sale. \$9.00 per MBF is due upon removal. These are in addition to the bid price.

SPECIAL REMARKS:

1. Outer boundary of harvest area in RMZ/WMZ thinning areas is demarcated with blue special management tags within the sale area.
2. HQ DF noted within the sale area. See cruise for further details.
3. Recreation trails exist in the sale area. Also, use and abandonment of road to recreation jeep trail is proposed as part of harvest activity, see road plan for details and H-141 for restrictions.



TIMBER NOTICE OF SALE

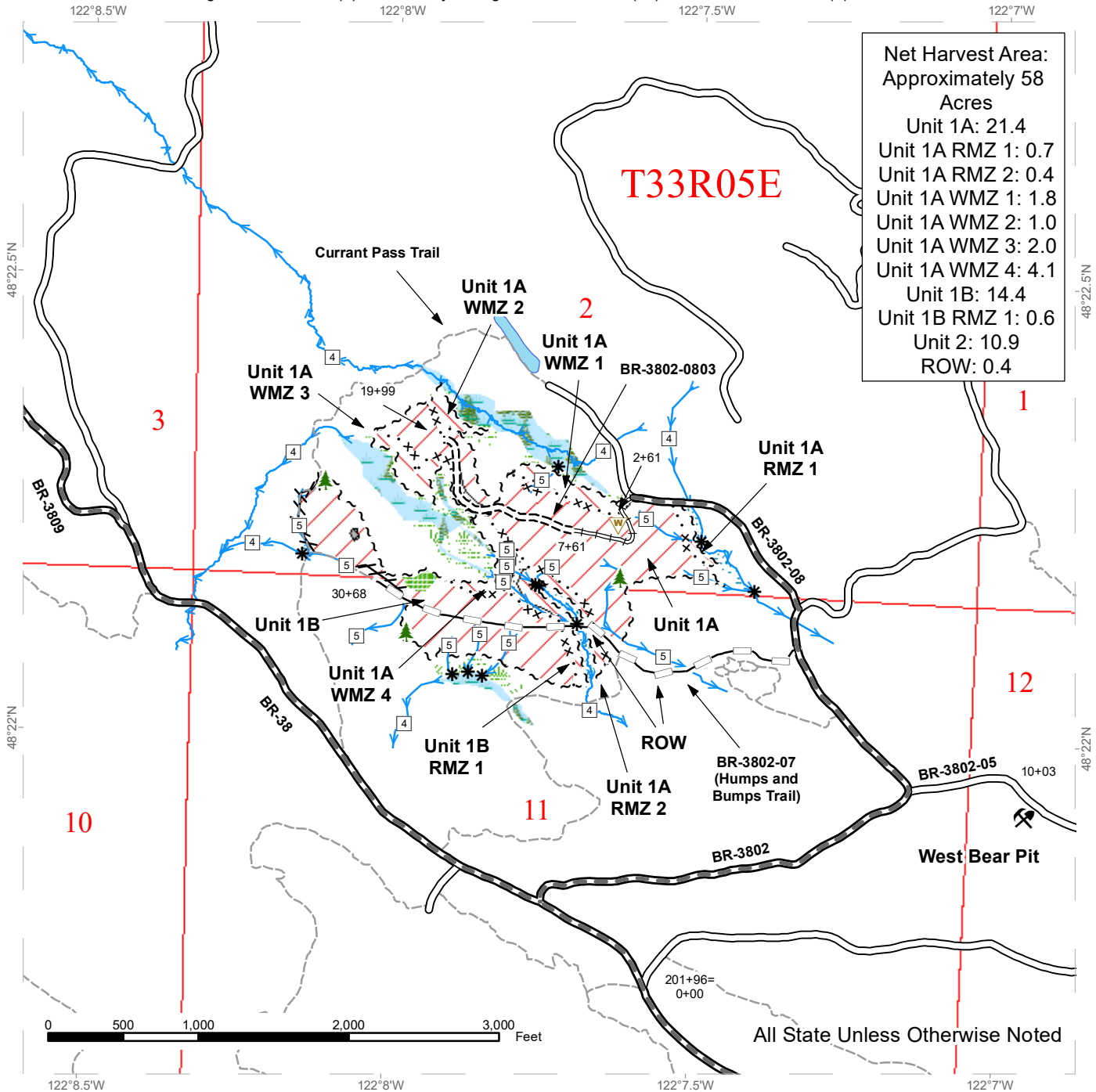
4. Cedar salvage will be offered for sale separately from the timber sale and is NOT included in the products sold.

TIMBER SALE MAP

SALE NAME: BEAR BONES
AGREEMENT #: 30-103351
TOWNSHIP(S): T33R5E
TRUST(S): Agricultural School (4), Community College Forest Reserve (12), State Forest Transfer (1)

REGION: Northwest Region
COUNTY(S): Skagit
ELEVATION RGE: 1600-2520

Net Harvest Area:
 Approximately 58 Acres
 Unit 1A: 21.4
 Unit 1A RMZ 1: 0.7
 Unit 1A RMZ 2: 0.4
 Unit 1A WMZ 1: 1.8
 Unit 1A WMZ 2: 1.0
 Unit 1A WMZ 3: 2.0
 Unit 1A WMZ 4: 4.1
 Unit 1B: 14.4
 Unit 1B RMZ 1: 0.6
 Unit 2: 10.9
 ROW: 0.4



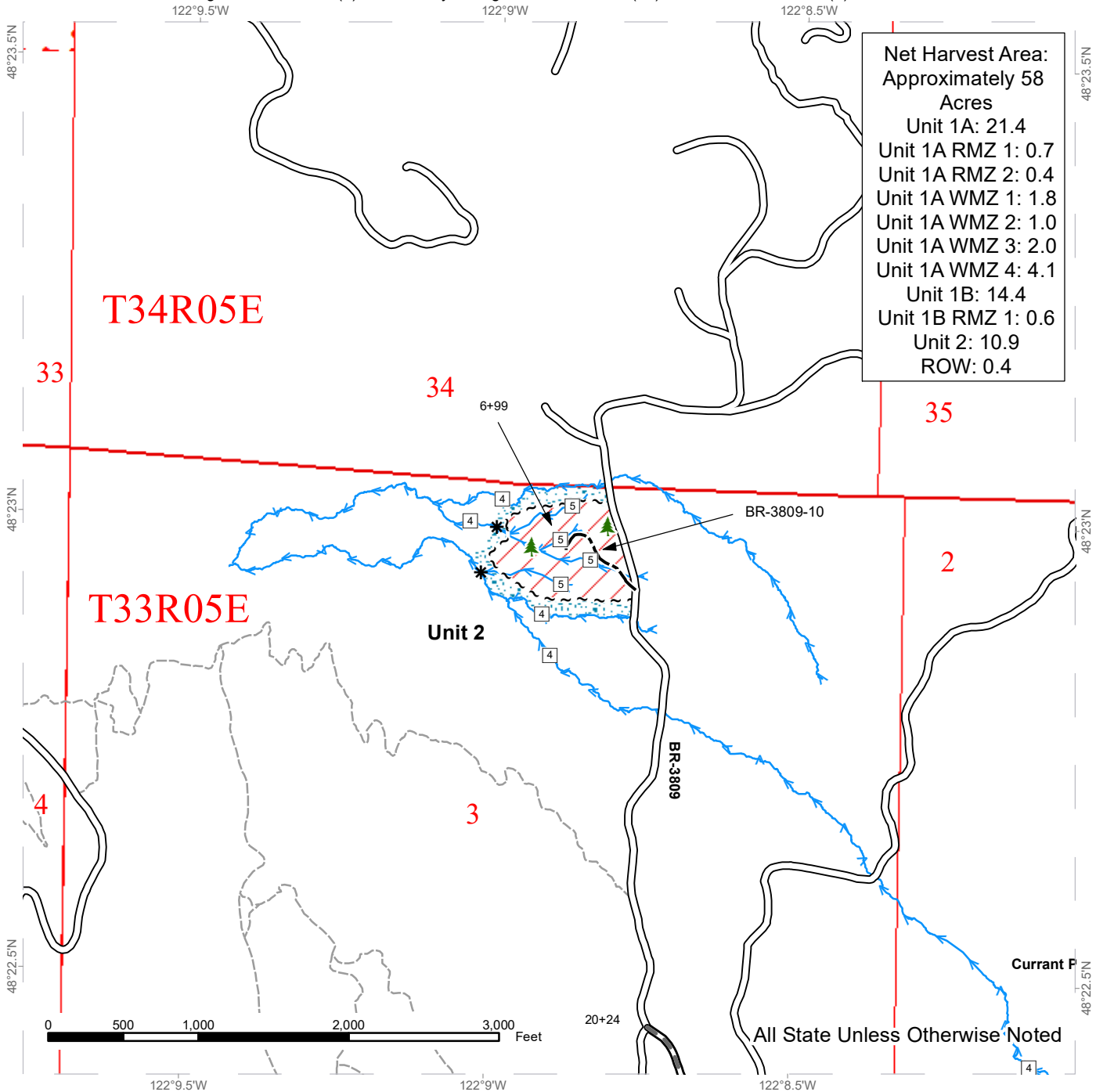
Variable Retention Harvest	Open Water	Optional Reconstruction
Variable Density Thinning	Sale Boundary Tags	Streams
WMZ Mitigation	Special Mgmt Area	Walker Valley Trails
Non-Tradeable Leave Clump	Flag Line	Stream Type
Leave Tree Area	Existing Roads	Stream Type Break
Riparian Mgt Zone	Required Pre-Haul Maintenance	Leave Tree Area <1/4-acre
Forested Wetland	Required Construction	Rock Pit
Wetland Mgt Zone	Required Reconstruction	Waste Area

TIMBER SALE MAP

SALE NAME: BEAR BONES
AGREEMENT #: 30-103351
TOWNSHIP(S): T33R5E
TRUST(S): Agricultural School (4), Community College Forest Reserve (12), State Forest Transfer (1)

REGION: Northwest Region
COUNTY(S): Skagit
ELEVATION RGE: 1600-2520

Net Harvest Area:
 Approximately 58 Acres
 Unit 1A: 21.4
 Unit 1A RMZ 1: 0.7
 Unit 1A RMZ 2: 0.4
 Unit 1A WMZ 1: 1.8
 Unit 1A WMZ 2: 1.0
 Unit 1A WMZ 3: 2.0
 Unit 1A WMZ 4: 4.1
 Unit 1B: 14.4
 Unit 1B RMZ 1: 0.6
 Unit 2: 10.9
 ROW: 0.4

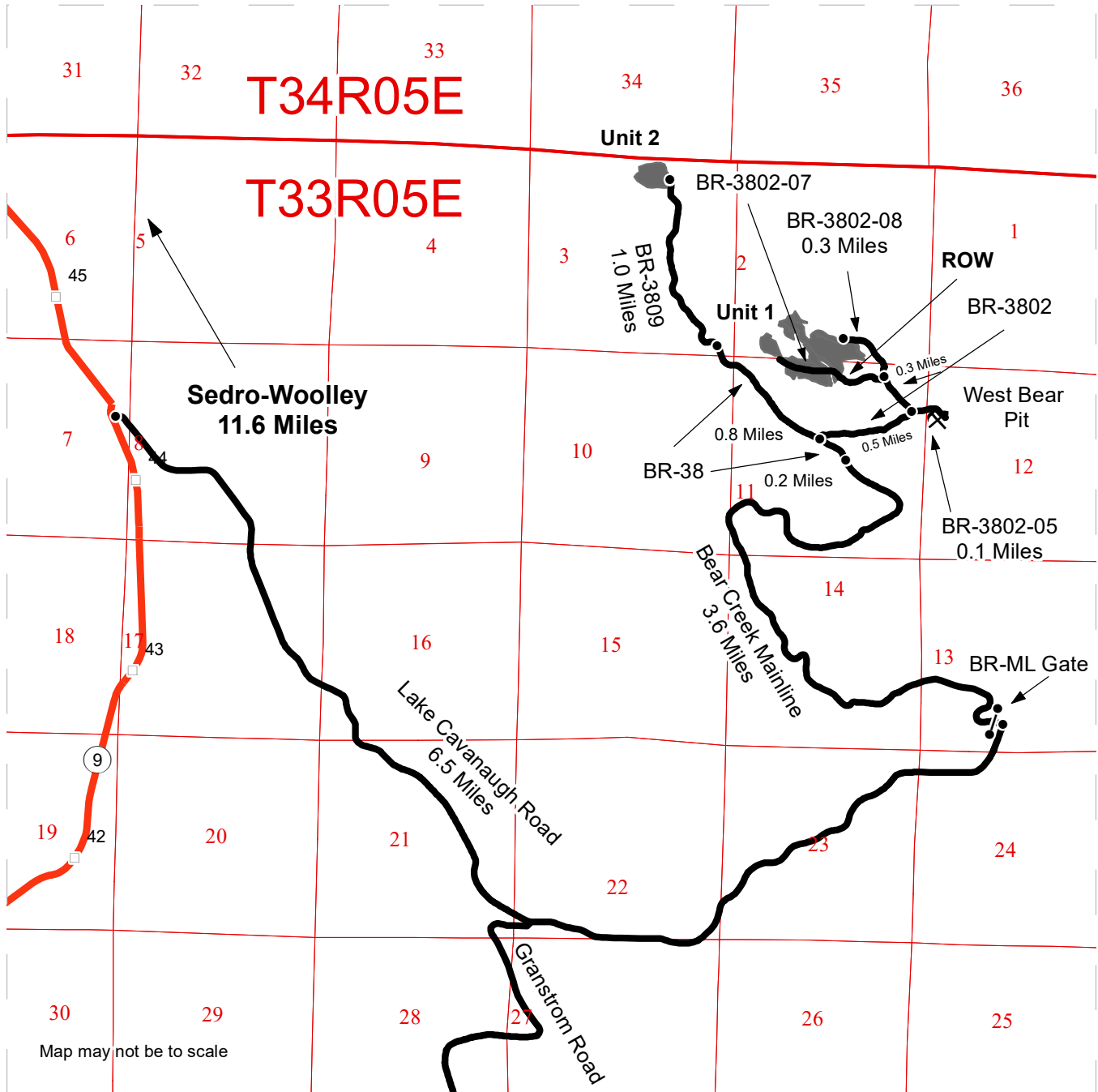


	Variable Retention Harvest		Streams
	Riparian Mgt Zone		Walker Valley Trails
	Open Water		Stream Type
	Sale Boundary Tags		Stream Type Break
	Existing Roads		Leave Tree Area <1/4-acre
	Required Pre-Haul Maintenance		
	Optional Construction		

DRIVING MAP

SALE NAME: BEAR BONES
 AGREEMENT#: 30-103351
 TOWNSHIP(S): T33R5E
 TRUST(S): Agricultural School (4), Community College Forest Reserve (12), State Forest Transfer (1)

REGION: Northwest Region
 COUNTY(S): Skagit
 ELEVATION RGE: 1600-2520



Map may not be to scale

- Timber Sale Unit
- Haul Route
- Milepost Markers
- Distance Indicator
- Gate (F1-3)
- Rock Pit

DRIVING DIRECTIONS:
 From the junction of Highway 20 and Highway 9 in Sedro-Woolley, travel south 11.6 miles on Highway 9 to Lake Cavanaugh road. Travel east on Lake Cavanaugh road for 6.5 miles to the BR-ML gate on the north side of the road.
 Unit 1 - From the BR-ML gate, travel 3.8 miles on the BR-ML to the BR-ML and BR-38 junction. Travel 0.2 miles on the BR-38 then head east on BR-3802 for 0.8 miles, turn onto the BR-3802-08 travel 0.3 miles to Unit 1.
 Unit 2 - From the BR-ML gate, travel 3.8 miles on the BR-ML to the BR-ML and BR-38 junction. Travel 0.9 miles on BR-38 to the BR-3809 junction. Follow the BR-3809 1.0 miles to Unit 2.
 West Bear Pit - From the BR-ML gate, travel 3.8 miles on the BR-ML to the BR-38 junction. Travel 0.2 miles on the BR-38 then turn east on the BR-3802 for 0.5 miles. Turn right onto the BR-3802-05, travel 0.1 miles to the pit.





TIMBER NOTICE OF SALE

SALE NAME: V Twin

AGREEMENT NO: 30-102160

AUCTION: December 14, 2022 starting at 10:00 a.m., COUNTY: Snohomish Northwest Region Office, Sedro Woolley, WA

SALE LOCATION: Sale located approximately 10 miles southeast of Granite Falls, WA

PRODUCTS SOLD AND SALE AREA:

All timber bounded by white timber sale boundary tags, except cedar salvage (cedar snags, preexisting dead and down cedar trees and cedar logs), trees marked with blue paint on the bole and root collar, and forest products tagged out by yellow leave tree area tags in Units #2, #5, and #6.

All timber bounded by white timber sale boundary tags and the PK-ML Road, except cedar salvage (cedar snags, preexisting dead and down cedar trees and cedar logs), trees marked with blue paint on the bole and root collar, and forest products tagged out by yellow leave tree area tags in Unit #4.

All timber bounded by white timber sale boundary tags and orange right of way tags, except cedar salvage (cedar snags, preexisting dead and down cedar trees and cedar logs), trees marked with blue paint on the bole and root collar, and forest products tagged out by yellow leave tree area tags in Unit #8.

All timber bounded by orange right of way tags, except cedar salvage (cedar snags, preexisting dead and down cedar trees and cedar logs), except that title to the timber within the right-of-way tags for optional construction road segments is not conveyed to the Purchaser unless the road segment is actually constructed.

All forest products above located on part(s) of Sections 5 and 6 all in Township 29 North, Range 8 East, Sections 31 and 32 all in Township 30 North, Range 8 East, W.M., containing 98 acres, more or less.

CERTIFICATION: This sale is certified under the Sustainable Forestry Initiative® program Standard (cert no: PwC-SFIFM-513)

ESTIMATED SALE VOLUMES AND QUALITY:

Table with columns: Species, Avg DBH, Ring Count, Total MBF, and MBF by Grade (1P, 2P, 3P, SM, 1S, 2S, 3S, 4S, UT). Rows include Hemlock, Redcedar, Douglas fir, Cottonwood, Silver fir, Maple, Red alder, and Sale Total.

MINIMUM BID: \$496,000.00 BID METHOD: Sealed Bids

PERFORMANCE SECURITY: \$99,200.00 SALE TYPE: Lump Sum



TIMBER NOTICE OF SALE

ACREAGE DETERMINATION

CRUISE METHOD: Acres determined by GPS traverse for units and length x width calculation for right-of-way. Cruise was conducted via variable plot sample type, as well as 1/20 acre fixed plot for right-of-ways. Cruise acres are based on FMA (Forest Management Activity) acres including leave tree areas. Leave tree volume is not included in the cruise. See Cruise Narrative for further details. Shapefiles of units are available upon request after the BNR meeting in which the sale is presented.

FEES: \$83,249.00 is due on day of sale. \$9.00 per MBF is due upon removal. These are in addition to the bid price.

SPECIAL REMARKS:

1. HQ DF noted within the sale area. See cruise for further details.
2. Cedar salvage will be offered for sale separately from the timber sale and is NOT included in the products sold.
3. Required road work completion date for the PK-46 Road (Stations 0+00 to 27+10 by July 31, 2023; Stations 27+10 to 95+00 by September 30, 2023).

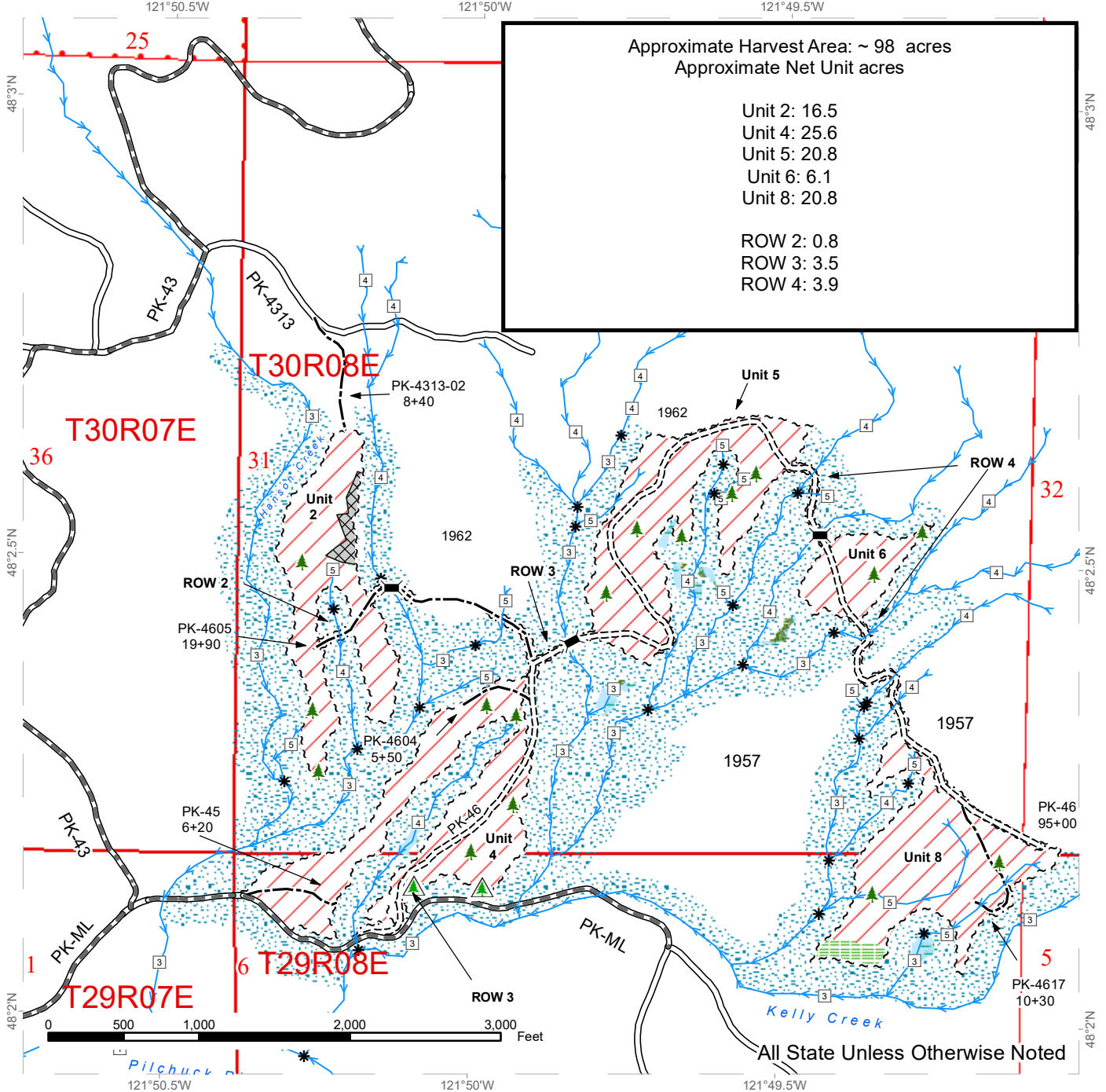
TIMBER SALE MAP

SALE NAME: V TWIN
AGREEMENT #: 30-102160
TOWNSHIP(S): T29R08E, T30R08E
TRUST(S): Agricultural School (4), Common School and Indemnity (3), State Forest Transfer (1)

REGION: Northwest Region
COUNTY(S): Snohomish
ELEVATION RGE: 760-1440

Approximate Harvest Area: ~ 98 acres
 Approximate Net Unit acres

Unit 2:	16.5
Unit 4:	25.6
Unit 5:	20.8
Unit 6:	6.1
Unit 8:	20.8
ROW 2:	0.8
ROW 3:	3.5
ROW 4:	3.9



All State Unless Otherwise Noted

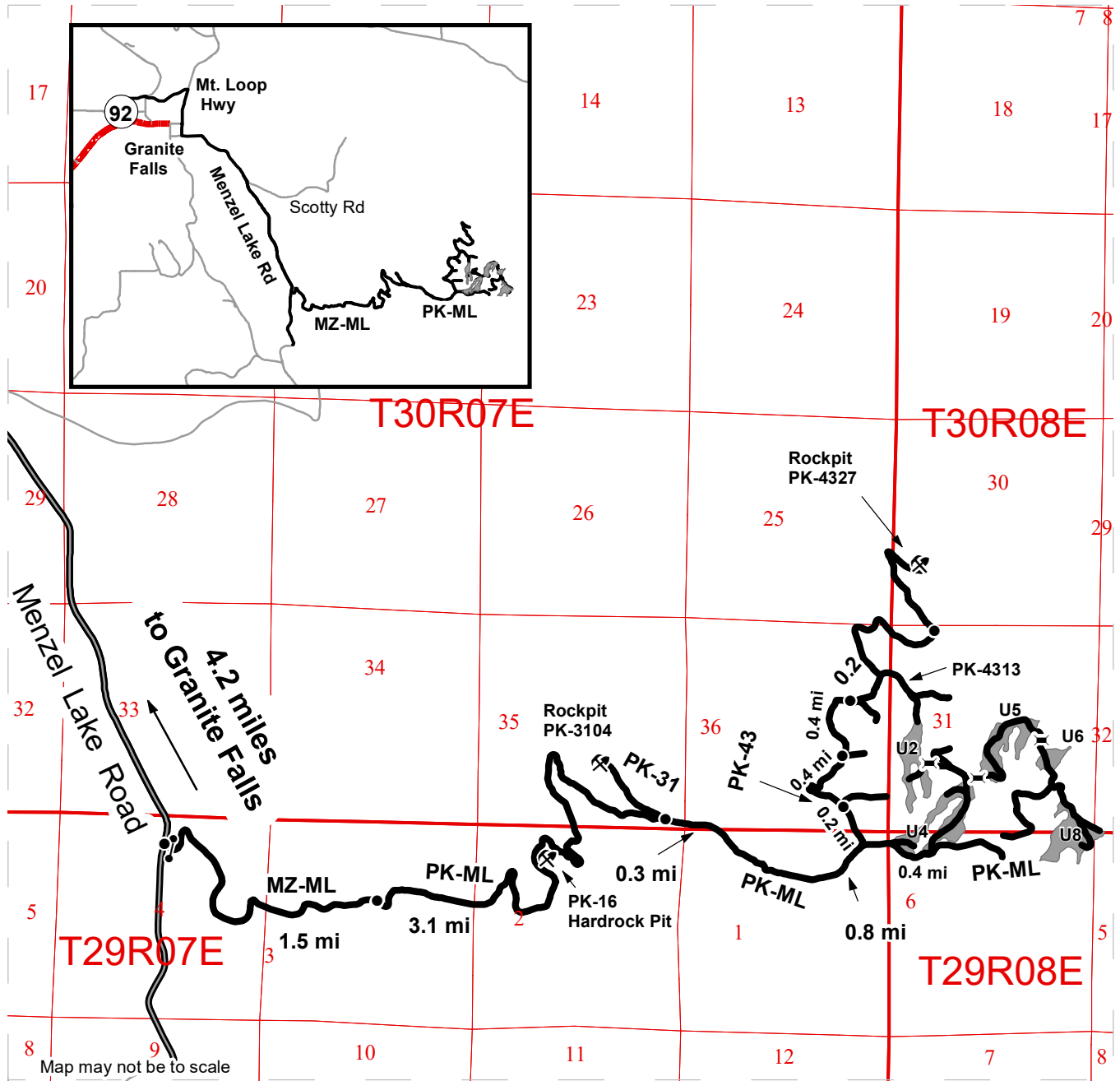
Variable Retention Harvest	Leave Tree Area	Existing Roads
Public Land Survey Townships	Riparian Mgt Zone	Required Pre-Haul Maintenance
Public Land Survey Sections	Forested Wetland	Required Construction
Sale Boundary Tags	Bridge Install	Optional Construction
Right of Way Tags	Leave Tree Area <1/4-acre	Streams
	Non-Tradeable Leave Trees	Stream Type
	Non-Tradeable Leave Tree Area	Stream Type Break



DRIVING MAP

SALE NAME: V TWIN
 AGREEMENT#: 30-102160
 TOWNSHIP(S): T29R08E, T30R8E
 TRUST(S): Agricultural School (4), Common School and Indemnity (3), State Forest Transfer (1)

REGION: Northwest Region
 COUNTY(S): Snohomish
 ELEVATION RGE: 760-1440



Map may not be to scale

- Haul Route
- Bridge
- Distance Indicator
- Gate (F-1-3 Key)
- Rock Pit
- State Highway
- Other Road

DRIVING DIRECTIONS:

From the intersection of MTN Loop HWY and Menzel Lake Road in Granite Falls, travel 4.2 miles south along Menzel Lake Road to the Menzel Lake Main Line (MZ-ML) where you will arrive at a gate (F-1-3 key required).

From the gate, drive 1.5 miles east, staying right at the fork to continue on the PK-ML. From this junction, travel 3.1 miles east along PK-ML to the Junction of PK-31 and PK-ML. Continue along PK-ML for 0.8 miles to the junction of PK-43 and PK-ML.

Unit(s) 2,4,5,6,8:
 From the junction of PK-ML and PK-43, head east on PK-ML for 0.4 miles.
 Turn left onto PK-46 to access Units 2,4,5,6,8.





TIMBER NOTICE OF SALE

SALE NAME: BOX OF RAIN

AGREEMENT NO: 30-103275

AUCTION: December 14, 2022 starting at 10:00 a.m., COUNTY: Whatcom Northwest Region Office, Sedro Woolley, WA

SALE LOCATION: Sale located approximately 12 miles southeast of Deming, WA.

PRODUCTS SOLD AND SALE AREA:

All timber bounded by white timber sale boundary tags, pink flag line and the MF-ML Road, except cedar salvage (cedar snags, preexisting dead and down cedar trees and cedar logs), trees marked with blue paint on the bole and root collar, forest products tagged out by blue special management tags (WMZs/RMZs), and forest products tagged out by yellow leave tree area tags in Unit #1.

All timber bounded by white timber sale boundary tags and the MF-ML Road, except cedar salvage (cedar snags, preexisting dead and down cedar trees and cedar logs), trees marked with blue paint on the bole and root collar, and forest products tagged out by yellow leave tree area tags in Unit #2.

All timber as described for removal in Schedule B located in the RMZ/WMZ thinning areas (beyond the blue special management tags up to the white timber sale boundary tags) within Unit #1.

All timber as described for removal in Schedule B located along the MF-ML and WV-ML roads (daylighting area as shown on the timber sale map), marked with orange paint on the uphill side of the road.

All forest products above located on part(s) of Sections 16, 17, 20 and 21 all in Township 38 North, Range 6 East, W.M., containing 40 acres, more or less.

CERTIFICATION: This sale is certified under the Sustainable Forestry Initiative® program Standard (cert no: PwC-SFIFM-513)

ESTIMATED SALE VOLUMES AND QUALITY:

Table with columns: Species, Avg DBH, Ring Count, Total MBF, and MBF by Grade (1P, 2P, 3P, SM, 1S, 2S, 3S, 4S, UT). Rows include Douglas fir, Hemlock, Cottonwood, Red alder, Redcedar, Maple, and Sale Total.

MINIMUM BID: \$434,000.00 BID METHOD: Sealed Bids

PERFORMANCE SECURITY: \$86,800.00 SALE TYPE: Lump Sum

EXPIRATION DATE: March 31, 2024 ALLOCATION: Export Restricted



TIMBER NOTICE OF SALE

BID DEPOSIT: \$43,400.00 or Bid Bond. Said deposit shall constitute an opening bid at the appraised price.

HARVEST METHOD: Cable or tethered equipment (See below for restrictions); tracked-based equipment and/or "6-wheeled rubber tired skidders with over-the-tire tracks spanning both sets of rear tires" on sustained slopes 40% or less (See below for restrictions); self-leveling equipment on sustained slopes 55% or less; also, a feller-buncher may be utilized on sustained slopes 40% or less.

Purchaser must obtain prior written approval from the Contract Administrator for areas as to where to utilize tethered equipment prior to use.

Purchaser must obtain prior written approval from the Contract Administrator for areas as to where to utilize rubber-tired skidder equipment prior to use. Skidders shall be limited to preapproved skid trails only. If ground disturbance is causing excessive damage, as determined by the Contract Administrator, skidders will no longer be authorized. Falling and Yarding will not be permitted from November 1 to March 31 unless authorized in writing by the Contract Administrator (THIS PERTAINS TO GROUND-BASED EQUIPMENT ONLY) to reduce soil damage and erosion.

ROADS: 308.15 stations of required prehaul maintenance. The hauling of forest products will not be permitted from November 1 to March 31 unless authorized in writing by the Contract Administrator to reduce soil damage and siltation.

ACREAGE DETERMINATION

CRUISE METHOD: Acres determined by GPS traverse. Cruise was conducted via fixed and variable plot sample type. See Cruise Narrative for further details. Shapefiles of units are available upon request, and on the DNR website after the BNR meeting in which the sale is presented.

FEES: \$25,806.00 is due on day of sale. \$9.00 per MBF is due upon removal. These are in addition to the bid price.

SPECIAL REMARKS:

1. HQ DF noted within the sale area. See cruise for details.
2. Cedar bark stripping/pulling will occur within the sale area, prior to harvest operations. Unless designated as a leave tree, all freshly stripped cedar is considered sale volume and shall be felled and removed during harvest operations.
3. Clause S-020, Extreme Hazard Abatement, applies to the USFS-38 Road (MF-ML/WV-ML), which is open to the public.

TIMBER SALE MAP

SALE NAME: BOX OF RAIN
AGREEMENT #: 30-103275
TOWNSHIP(S): T38R6E
TRUST(S): Common School and Indemnity (3)

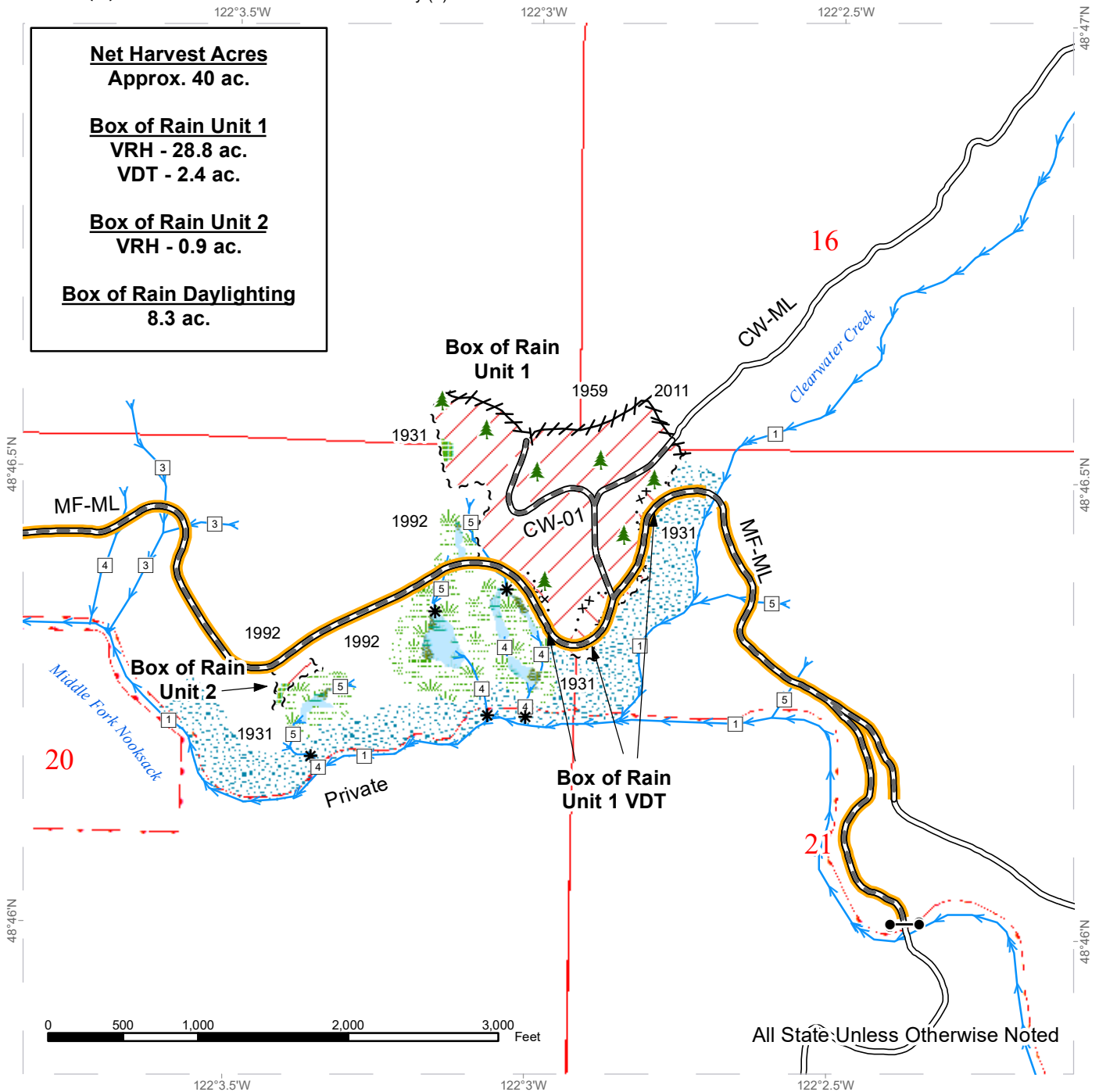
REGION: Northwest Region
COUNTY(S): Whatcom
ELEVATION RGE: 1200-1600

Net Harvest Acres
 Approx. 40 ac.

Box of Rain Unit 1
 VRH - 28.8 ac.
 VDT - 2.4 ac.

Box of Rain Unit 2
 VRH - 0.9 ac.

Box of Rain Daylighting
 8.3 ac.



All State Unless Otherwise Noted

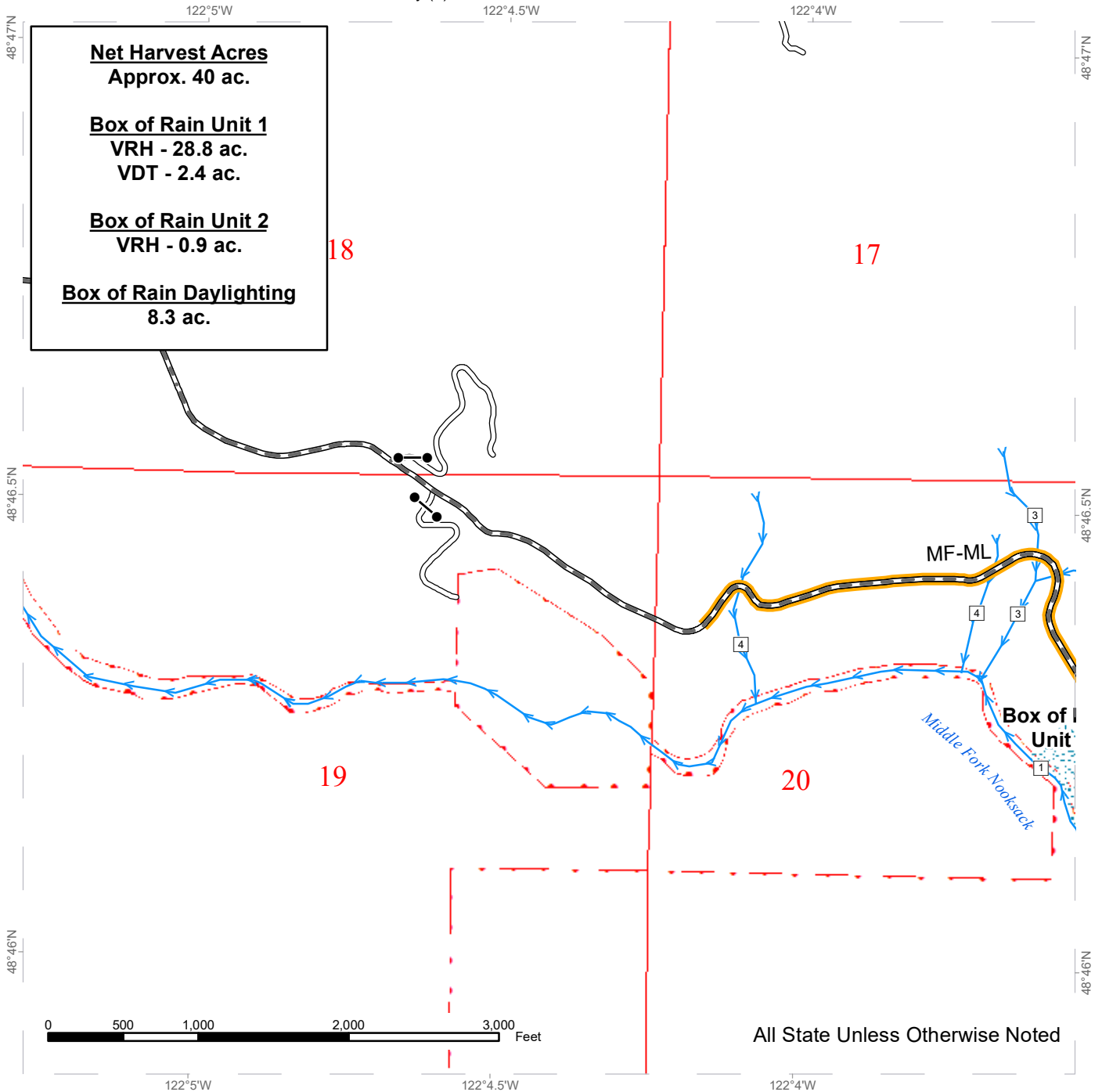
	Variable Retention Harvest		Sale Boundary Tags		Stream Type Break
	Variable Density Thinning		Special Mgmt Area		Gate
	MF-ML Daylighting		Flag Line		Leave Tree Area <1/4-acre
	Leave Tree Area		Existing Roads		Required Pre-Haul Maintenance
	Riparian Mgt Zone		Streams		Stream Type
	Forested Wetland				
	Wetland Mgt Zone				



TIMBER SALE MAP

SALE NAME: BOX OF RAIN
AGREEMENT #: 30-103275
TOWNSHIP(S): T38R6E
TRUST(S): Common School and Indemnity (3)

REGION: Northwest Region
COUNTY(S): Whatcom
ELEVATION RGE: 1200-1600



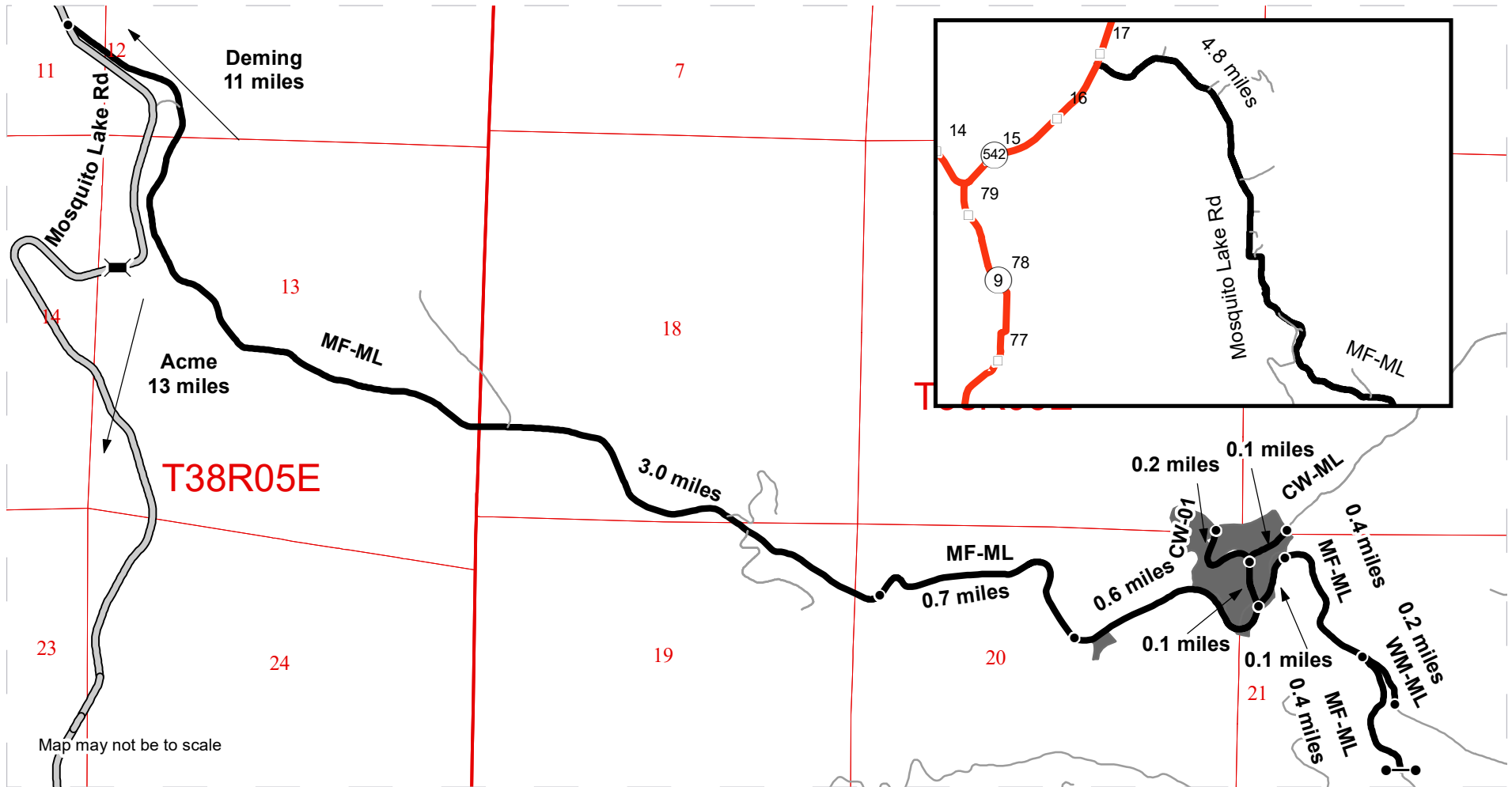
- MF-ML Daylighting
- Riparian Mgt Zone
- Existing Roads
- Required Pre-Haul Maintenance
- Streams
- Stream Type
- Stream Type Break



DRIVING MAP

SALE NAME: BOX OF RAIN
AGREEMENT#: 30-103275
TOWNSHIP(S): T38R6E
TRUST(S): Common School and Indemnity (3)

REGION: Northwest Region
COUNTY(S): Whatcom
ELEVATION RGE: 1200-1600



Timber Sale Unit
 Haul Route
 Other Road

DRIVING DIRECTIONS:

From the intersection of Mosquito Lake Rd and Highway 542 (near mile post 17), travel south on Mosquito Lake Rd for 4.8 miles. Turn left onto the MF-ML, and head east on the MF-ML for 3.0 miles. Daylighting starts at the 3.0 mile.

Continue on the MF-ML for 0.7 miles. Unit 2 of the timber sale is on the right.

Travel 0.6 miles to the intersection of the MF-ML and the CW-ML. Second sub-unit is on the right and left.

Further unit access along the next 0.1 miles on the MF-ML or using the first 0.2 miles of the CW-ML and CW-01.

Additional daylighting work occurs on the MF-ML and WM-ML past the timber sale unit, Daylighting occurs on the next 0.8 miles of the MF-ML (up to the gate at Middle Fork Bridge), and the first 0.2 miles of the WM-ML.



**State of Washington
Department of Natural Resources**

SEALED BID FORM

Sale Name _____ Agreement Number _____

_____ hereby submits the following bid for timber.
(Print full, legal company name)

(Street address, City, State, Zip Code)

(Phone Number)

Lump Sum Bid (Not Including Fees) \$ _____ **For Total Sale**

Weight Scale Sale Bid (Not Including Fees) \$ _____ / **Ton**

Scribner Scale Sale Bid (Not Including Fees) \$ _____ / **MBF For Biddable Species**

BID DEPOSIT

Bid Deposit Amount: \$ _____

Bid Deposit Type:

- Cash, certified check, cashiers check, or money order
 Per Sale Bid Bond
 Statewide Bid Bond, Number _____

Within 30 days of confirmation date the successful bidder agrees to furnish Performance Security acceptable to the State in the amount specified on the Notice of Sale. Performance Security must guarantee performance of all provisions of the contract and payment of any damages caused by operations under the contract or resulting from the successful bidders noncompliance with any rule or law.

Bidder's Warranty and Bid Signature

By signing and submitting this bid as an offer to purchase forest products from the State, the Bidder hereby warrants to the State that they have had an opportunity to fully inspect the sale area and the forest products being sold. Bidder further warrants to the State that they enter this bid based upon their own judgments of the value of the forest products, formed after their own examination and inspection of both the timber sale area and the forest products being sold. Bidder also warrants to the State that they enter this bid without any reliance upon the volume estimates, acreage, appraisals, pre-bid documentation, or any other representation by the Washington State Department of Natural Resources.

_____ Date _____
(Signature of Authorized Representative submitting this bid)

(Print **name and title** of Authorized Representative submitting this bid)

Note: all sales are subject to confirmation by the Commissioner of Public Lands (Refer 79.15.120)

Instructions For Completing Sealed Bid Form

All bids submitted for the purchase of forest products being sold by the Washington State Department of Natural Resources must have an original signature on behalf of the person or entity submitting the bid, and must be on the form provided in this booklet or a photocopy thereof. The DNR will not accept bids that are not signed, and will not accept bids that are not on the current, approved bid form. All appropriate blanks on bid form must be completed including the bid bond number if the bidder is relying upon a bid bond for bid deposit.

For more specific information, contact the appropriate region office.

In-Person Bids

- A. Sealed bids must be in auction box before 10:00 a.m. on the day of auction at the location specified in the Timber Notice of Sale.
 - B. Sealed bids must be submitted in an envelope with the name of the sale, the bidder's name and the contract number clearly written on the outside of the envelope. The full legal name and business address of the bidder must be inserted where indicated on the form, and must be on the bid bond and timber sale contract. The bid form must be signed by an authorized representative. When a bidder has more than one person authorized to bid, documentation of those persons with signature authority for bidding must accompany the bid or be on file at the region office. Sealed bid envelopes are available at all region offices. One bid per envelope.
 - C. Sealed bid envelopes **must** contain a completed bid form and a bid deposit.
 - D. Sealed bid envelopes **may** contain a check for the Initial Deposit amount and a check for fees.
-

Mailed Bids

- A. Bids that are mailed are required to have printed on the outside: "DO NOT OPEN UNTIL SALE DATE. SEALED BID ENCLOSED". The sealed bid envelope(s) will be enclosed inside the mailed-in envelope. Mailed bids must be submitted in an envelope with the name of the sale, the bidder's name and the agreement number clearly written on the outside of the envelope. The full legal name and business address of the bidder must be inserted where indicated on the form, and must be the same on the bid bond and timber sale contract. The Sealed Bid Form must be signed by an authorized representative. When a bidder has more than one person authorized to bid, documentation of those persons with signature authority for bidding must accompany the bid or be on file at the region office. Mail-in envelopes are available at all region offices. One bid per mailed-in envelope.
 - B. Bids that are mailed will be accepted up to 4:30 p.m. the last business day before the auction by the region office in which the sale is located. Bidders assume the risk for the method of delivery. The DNR assumes no responsibility for any delays caused by any delivery service.
 - C. Sealed bid envelopes **must** contain a completed bid form and a bid deposit.
 - D. Sealed bid envelopes **may** contain a check for the Initial Deposit amount and a check for fees.
-

Initial Deposit:

Lump Sum Sales - Initial Deposit must equal 10% of the total bid submitted.
(25% if the bidder is a defaulter as defined under WAC 332-140-300)

Weight Scale Sales - Initial Deposit must equal 10% of the bid per ton multiplied by the total sale estimated tonnage. (25% if the bidder is a defaulter as defined under WAC 332-140-300)

Scribner MBF Scale Sales - Initial Deposit must equal 10% of the bid per MBF multiplied by the total sale MBF. (25% if the bidder is a defaulter as defined under WAC 332-140-300)

**State of Washington
Department of Natural resources**

STATEWIDE BID BOND

Bond Number _____

_____ of _____,
(Principal's Name) (City, State)

hereinafter called PRINCIPAL, and _____ hereinafter called
SURETY,

a corporation organized under the laws of the State of _____, and authorized to transact surety business in the State of Washington, as SURETY, are held and firmly bound jointly and severally to the State of Washington, Department of Natural Resources, hereinafter called the STATE, in the sum of \$150,000.00 Dollars, lawful money of the United States of America. The PRINCIPAL binds itself, its heirs, executors, administrators, successors, and assigns, and the SURETY binds itself, its successors, and assigns, all jointly and severally.

This bond shall be governed by the laws of the State of Washington. In the event of a lawsuit involving this bond, a venue shall be proper only in Thurston County Superior Court.

Signed, sealed and dated this _____ day of _____, _____ .
(month) (year)

This statewide bid bond may be used for bidding between the following dates:

Starting:

Ending:

It Is Hereby Understood and Agreed:

If PRINCIPAL is an apparent high bidder, PRINCIPAL shall before 4:30 p.m ., on day of sale, pay to the STATE the amount of the initial deposit in the form of a certified check, cashier's check, bank draft, cash or money order, then this agreement shall be void for the sale on which the payment is made; otherwise, it will remain in force.

SURETY will make payment to the STATE within ten days after demand by the STATE if the PRINCIPAL shall fail to make timely payment as described above.

The SURETY may cancel this bond by sending a written notice to the STATE, not less than forty-five days before a cancellation date; liability shall terminate as to acts or omissions of the PRINCIPAL that occur after the cancellation date.

The PRINCIPAL and the SURETY executed this bond on the date first mentioned.

Principal: (Above named)

Signature: _____

Name: _____

Title: _____

Address: _____

City: _____
State & Zip Code

Surety: (Above named)

Signature: _____

Name: _____

Title: _____

Address: _____

City: _____
State & Zip Code

Surety: (Local Office of Authorized agent)

Signature: _____

Name: _____

Title: _____

Address: _____

City: _____
State & Zip Code

Notary or Company Seal in Space Above

Instructions for Completing Timber Sale Statewide Bid Bond

- A. This form is authorized for use as bid guaranty to qualify for bidding on Washington State Department of Natural Resources timber sales.
- B. The Statewide Bid Bond may be used as bid guaranty on more than one timber sale.
- C. The full legal name and business address of the PRINCIPAL must be inserted where indicated and must be the same as will appear on the bidding record and timber sale contract. The bond must be signed by an authorized person. Additionally, the name must be typed or printed below the signature and title must be shown.
- D. The full legal name and business address of the SURETY must be inserted where indicated. The bond must be signed by an authorized person. Additionally, the name must be typed or printed below the signature and the title must be shown.
- E. If the SURETY does not have a Washington State office or resident agent, but is authorized to transact surety business in the State of Washington as SURETY, it may leave this signature block blank.
- F. This form must be received by the Department of Natural Resources, Product Sales & Leasing Division, PO BOX 47016, Olympia, Washington, 98504-7016, ten days in advance of the auction.
- G. **The State reserves the right to reject *incomplete or incorrect* bid bond forms, making such forms unacceptable as bid guaranty.**

**State of Washington
Department of Natural Resources**

Timber Sale Per Sale Bid Bond

Bond Number _____

_____ of _____, hereinafter called PRINCIPAL, and _____, hereinafter called SURETY, a corporation organized under the laws of the State of _____ and authorized to transact surety business in the State of Washington, as SURETY, are held and firmly bound jointly and severally to the State of Washington, Department of Natural Resources, hereinafter called the STATE, in the sum of \$ _____ Dollars, lawful money of the United States of America. The PRINCIPAL binds itself, its heirs, executors, administrators, successors, and assigns, and the SURETY binds itself, its successors, and assigns, all jointly and severally.

This bond shall be governed by the laws of the State of Washington. In the event of a lawsuit involving this bond, venue shall be proper only in Thurston County Superior Court.

Signed, sealed, and dated this _____ day of _____, 20 _____.

BID IDENTIFICATION:

SALES NAME(S)	REQUIRED DEPOSIT	AGREEMENT NUMBER(S)

DATE OF BID: _____

It Is Hereby Understood and Agreed:

If PRINCIPAL is the high bidder on the sale(s) identified above and, within ten (10) days of the day of sale, transmits cash, certified check, cashier's check, bank draft or money order, payable to the STATE, in the amount of the bid guaranty required by the terms of the Notice of Sale, *then* this obligation shall be void; *otherwise*, it shall remain in force.

SURETY will make payment to the STATE within ten (10) days after demand by the STATE whenever the PRINCIPAL shall fail to make timely payment as described above.

IN WITNESS WHEREOF: the PRINCIPAL and the SURETY have caused this bond to be executed on the date first mentioned.

SECOND OFFICER:

Signature: _____

Name: _____

Title: _____

PRINCIPAL: (Above Named)

Signature: _____

Name: _____

Title: _____

SURETY: (Local Office of Authorized Agent)

Signature: _____

Name: _____

Title: _____

Address: _____

City: _____

State & Zip: _____

SURETY: (Above Named)

Signature: _____

Name: _____

Title: _____

Address: _____

City: _____

State & Zip _____

NOTARY OR COMPANY SEAL IN THE SPACE ABOVE

Instructions for Completing Timber Sale Per Sale(s) Bid Bond

- A. This form is authorized for use as bid guaranty to qualify for bidding on Washington State Department of Natural Resources timber sales.
- B. The Timber Sale Per Sale Bid Bond may be used as bid guaranty on more than one timber sale auction held the same date at the same location.
- C. The full legal name and business address of the PRINCIPAL must be the same as will appear on the bidding record and timber sale contract. The bond must be signed by an authorized person, the name typed or printed, and title shown. If PRINCIPAL is a corporation, a second officer must sign in the space to the left of the signature of the officer executing for the PRINCIPAL.
- D. The full legal name and business address of the SURETY must be inserted where indicated. The bond must be signed by an authorized person. Additionally, the name must be typed or printed below the signature and the title must be shown. If this person is not an officer of the corporation, evidence of authority must be submitted.
- E. If the SURETY does not have a Washington State office or resident agent, but is authorized to transact surety business in the State of Washington as Surety, it may leave the local office signature block blank.
- F. The date of the bid bond must not be later than the auction date.
- G. **The State reserves the right to reject incomplete or *incorrect* bid bond forms, making such forms unacceptable as guaranty.**

STATE OF WASHINGTON
DEPARTMENT OF NATURAL RESOURCES
LOG SORT SEALED BID FORM

Sale Name _____ Agreement Number _____ Date _____

_____ hereby submits the following bid for delivered logs.
(Print Company Name)

_____ Telephone Number _____
(Print Name Authorized Company Representative) (Contact for bid result notification)

(Street Address)

(City, State and Zip)

Agreement Number	Sort Number	<u>Delivered</u> Logs Bid Amount (fill in one only)	
		\$ /MBF	\$ /TON

Bid Deposit Amount \$ _____

- Bid Deposit Type:**
- Cash, Certified Check, Cashiers Check, or Money Order
 - Per Sale Bid Bond
 - Statewide Bid Bond, Number _____

The successful bidder agrees to furnish payment security acceptable to the State in the amount as described in clause P-041 of the Purchaser's contract prior to log delivery and at a date to be determined by the State.

Bidder's Warranty and Bid Signature

By signing and submitting this bid as offer to purchase forest products from the State, the Bidder hereby warrants to the State that they have had an opportunity to fully inspect the sale area and the forest products being sold. Bidder further warrants to the State that they enter this bid based solely upon their own judgment of the value of the forest products, formed after their own examination and inspection of both the timber sale area and the forest products being sold. Bidder also warrants to the State that they enter this bid without any reliance upon the volume estimates, acreage estimates, appraisals, pre-bid documentation, or any other representation by the State Department of Natural Resources.

(Signature of Authorized Representative submitting this bid)

(Date of Signature)

(Print name and title of Authorized Representative submitting this bid)

NOTES: A separate bid form is required for each log sort bid and must be delivered in a separate envelope. Photocopies of this bid form may be used. Each photocopy must have original signatures. Final contract award is contingent upon the State's haul cost analysis. Actual haul route may vary and is subject to change at the State's discretion. All sales are subject to confirmation by the Commissioner of Public Lands as per RCW 79.15.100.

LOG SORT SEALED BID SUPPLEMENTAL INFORMATION FORM

(Print Company Name)

(Sale Name)

(Agreement Number)

(Sort Number)

(email: optional for DNR production report distribution)

Log Manufacturing Specifications:

Sawlog and Peeler sorts: Enter at least one preferred log length including trim for each log length range below.

Pole sorts (Distribution): Enter three or more lengths. Attach preferred manufacturing information.

Pole sorts (Transmission): Enter six or more lengths. Attach preferred manufacturing information.

Tonnage sorts: See bid form instructions for required log lengths. Enter additional custom lengths as desired.

Log Length Ranges	Bidder's Preferred Log Lengths
16 ft. through 20 ft.	
22 ft. through 30 ft.	
32 ft. through 40 ft.	
Distribution Poles – 35 ft. through 55 ft.	
Transmission Poles – 60 ft.+	

Log Delivery Information:

1) Designate the point of delivery and address (must be a street address)

(Location Name)

(Street Address)

(City, State and Zip)

2) Designate the state approved Scaling and Weighing facilities closest to the point of delivery as needed.

Scaling Location Information

Weighing Location Information

(Scaling Location Name)

(Weighing Location Name)

(Third Party Scaling Organization)

(Weighing Location Owner)

(Scaling Location Street Address)

(Weighing Location Street Address)

(Scaling Location City, State and Zip)

(Weighing Location City, State and Zip)

Final contract award is contingent upon the State's haul cost analysis. Actual haul route may vary and is subject to change at the State's discretion. Additional terms or conditions requested by the bidder on or attached to the Log Sort Sealed Bid or Supplemental Information Forms are informational only and non-binding.

Instructions for Completing the Log Sort Sealed Bid and Supplemental Information Forms.

All bids submitted for the purchase of forest products being sold by the Washington State Department of Natural Resources must have an original signature on behalf of the person or entity submitting the bid, and must be on the form(s) provided in this booklet or a photocopy thereof. The DNR will not accept bids that are not signed, and will not accept bids that are not on the current, approved bid form. All appropriate blanks including Agreement Number, Sort Number, Bid amount (per mbf or ton as appropriate for the sort), Bid deposit amount and type. Signatures and date on bid form must be completed including the bid bond number if bidder is relying upon a bid bond for bid deposit.

Bids shall not be accepted if a completed '**Log Sort Sealed Bid Supplemental Information Form**' is not included with the approved '**Log Sort Sealed Bid Form**'.

Required log lengths for tonnage sorts: Preferred log lengths for tonnage sawlog sorts shall include the following plus any additional lengths identified on the Bid Supplemental Information form:

Species Type	Preferred Lengths
Conifer Sorts	16', 20', 24', 26', 32', 40'
Hardwood Sorts	18', 20', 26', 28', 30', 36', 38', 40'

For more specific information, contact the appropriate region office.

In-Person Bids

- A. Sealed bids must be in auction box or auction envelope before 10:00 a.m. on the day of sale at the location specified in the notice of sale.
- B. Sealed bids must be submitted in an envelope with the name of the sale, the bidder's name and the contract agreement number clearly written on the outside of the envelope. The full legal name and business address of the bidder must be inserted where indicated on the form, and must be the same as the name on the bid bond and timber sale contract. The bid form must be signed by an authorized person. When a bidder has more than one person authorized to bid, then documentation of those persons with signature authority for bidding must accompany the bid or be on file at the region office. Sealed bid envelopes are available at all region offices. One bid per envelope.
- C. Sealed bid envelopes must contain the following:
 1. A completed '**Log Sort Sealed Bid Form**';
 2. A completed '**Supplemental Information Form**' and;
 3. A bid deposit

Mailed Bids

- A. Mail-in bid envelopes are required to have printed on the outside: "DO NOT OPEN UNTIL SALE DATE. SEALED BID ENCLOSED." The sealed bid envelope(s) will be enclosed inside the mailed-in envelope. Mailed bids must be submitted in an envelope with the name of the sale, the bidder's name and the agreement number clearly written on the outside of the envelope. The full legal name and business address of the bidder must be inserted where indicated on the form, and must be the same on the bid bond and timber sale contract. The bid form must be signed by an authorized person. When a bidder has more than one person authorized to bid, then documentation of those persons with signature authority for bidding must accompany the bid or be on file at the region office. Mail-in envelopes are available at all region offices. One bid per mailed-in envelope.
- B. Mail-in or otherwise delivered bids will be accepted up to 4:30 p.m. the last business day before the auction by the region office in which the sale is located. Bidders assume the risk for the method of delivery they chose. The DNR assumes no responsibility for any delays caused by any delivery service.
- C. Sealed bid envelopes must contain the following:
 1. A completed '**Log Sort Sealed Bid Form**';
 2. A completed '**Log Sort Sealed Bid Supplemental Information Form**' and;
 3. A bid deposit

Department of Natural Resources Region Offices

Olympia Headquarters
 1111 Washington St SE
 MS 47000
 Olympia, WA 98504-7000
 (360) 902-1000
www.dnr.wa.gov

Product Sales & Leasing Division

1111 Washington St SE
 MS 47014
 Olympia, WA 98504-7014
 (360) 902-1600

South Puget Sound Region
 950 Fairman Ave N
 Enumclaw, WA 98022-9282
 (360) 825-1631

Pacific Cascade Region

601 Bond Road
 PO Box 280
 Castle Rock, WA 98611-0280
 (360) 577-2025

Southeast Region

713 Bowers Road
 Ellensburg, WA 98926-9301
 (509) 925-8510

Northwest Region

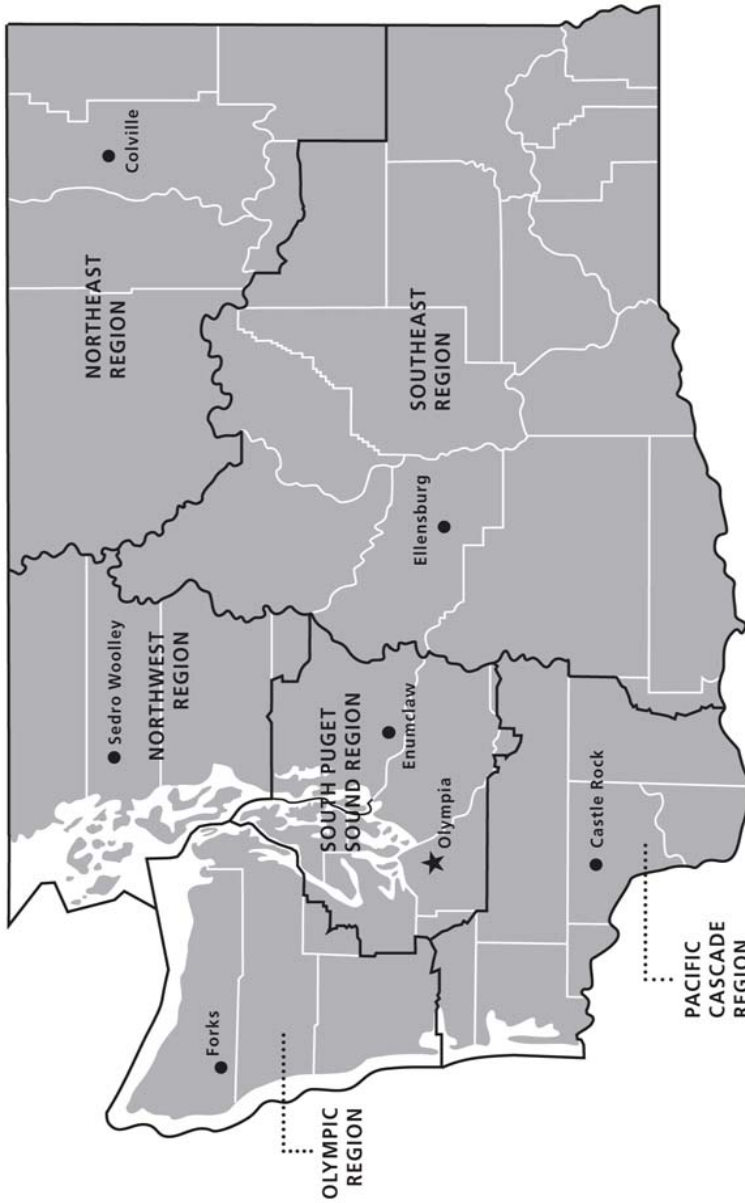
919 N Township St
 Sedro Woolley,
 WA 98284-9384
 (360) 856-3500

Olympic Region





411 Tillicum Lane
 Forks, WA 98331-9271
 (360) 374-2800

Northeast Region

225 S Silke Road
 PO Box 190
 Colville, WA 99114-0190
 (509) 684-7474



DNR REGIONS

-  DNR Region Boundaries
-  County Boundaries
-  DNR Region Office
-  Olympia Headquarters



WASHINGTON STATE DEPT OF
NATURAL RESOURCES



For more information about how public lands are managed visit DNR's web page at www.dnr.wa.gov

Fire, Burn Ban Information and Region Offices
 Toll Free: 1-800-527-3305 General TTY: 7-1-1





WASHINGTON STATE DEPT OF
**NATURAL
RESOURCES**

1111 WASHINGTON ST SE
MS 47014
OLYMPIA WA 98504-7014

www.dnr.wa.gov

For alternate formats
of this document,
Call (360) 902-1000
TRS: 7-1-1

PRINTED IN THE USA ON RECYCLED PAPER

