

State Trust Land Lease

AVAILABLE FOR PUBLIC AUCTION



12/28/2023 Detail Map

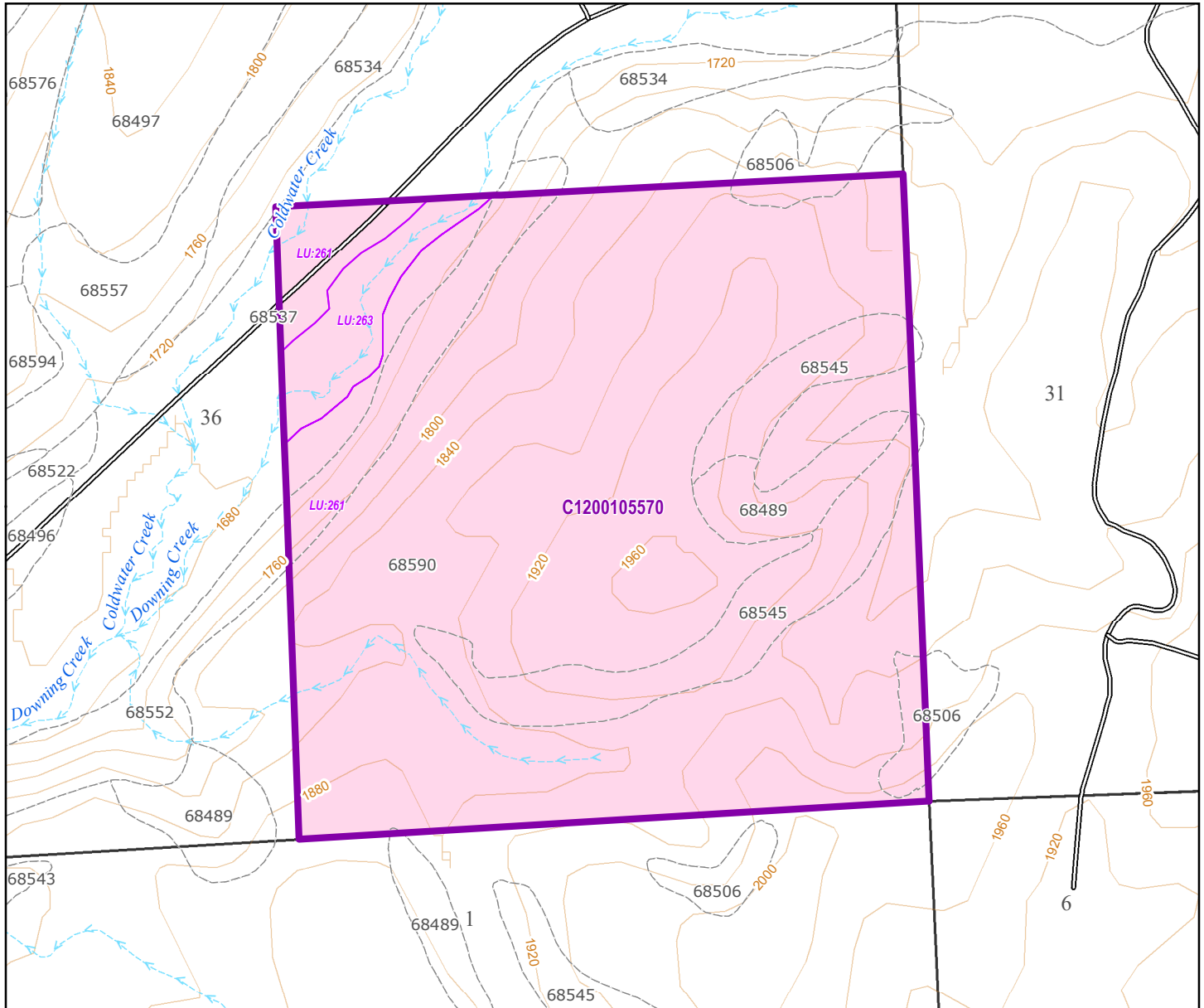
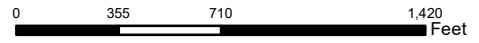
WASHINGTON STATE DEPARTMENT OF
NATURAL RESOURCES

For cartographic display only, DNR reserves the right to revise, edit or otherwise modify.

Lease No. C1200105570

T18-0N R40-0E S36, Whitman County

Precipitation Inches/Year: 14-16



AG Lease Future

Land Use

NRCS Soils (MUKEY__MUNAME)



- 261: Agriculture - Conserv. Reserve Program (Withdrawn)
- 263: Agriculture - Wildlife Habitat

- 68489__Athena silt loam, 25 to 40 percent slopes
- 68506__Athena silt loam, 40 to 55 percent slopes
- 68534__Gwin-Linville complex, 30 to 65 percent slopes
- 68537__Hermiston silt loam
- 68545__Lance silt loam, 25 to 40 percent slopes
- 68552__Linville silt loam, 30 to 65 percent slopes
- 68590__Athena silt loam, 7 to 25 percent slopes