



WASHINGTON STATE PARKS
AND RECREATION
COMMISSION

Trustland Transfers

Proviso Work Group
Meeting
August 6, 2021

PRESENTED BY Peter Herzog,
Assistant Director – Parks Development



Why are TLTs important to State Parks?

- DNR and Trustland transfer
- Federal transfer and leases
- PUD leases
- Donation
- State grants (e.g., WWRP)
- Federal grants



Why are TLTs important to State Parks?

Acquired from DNR

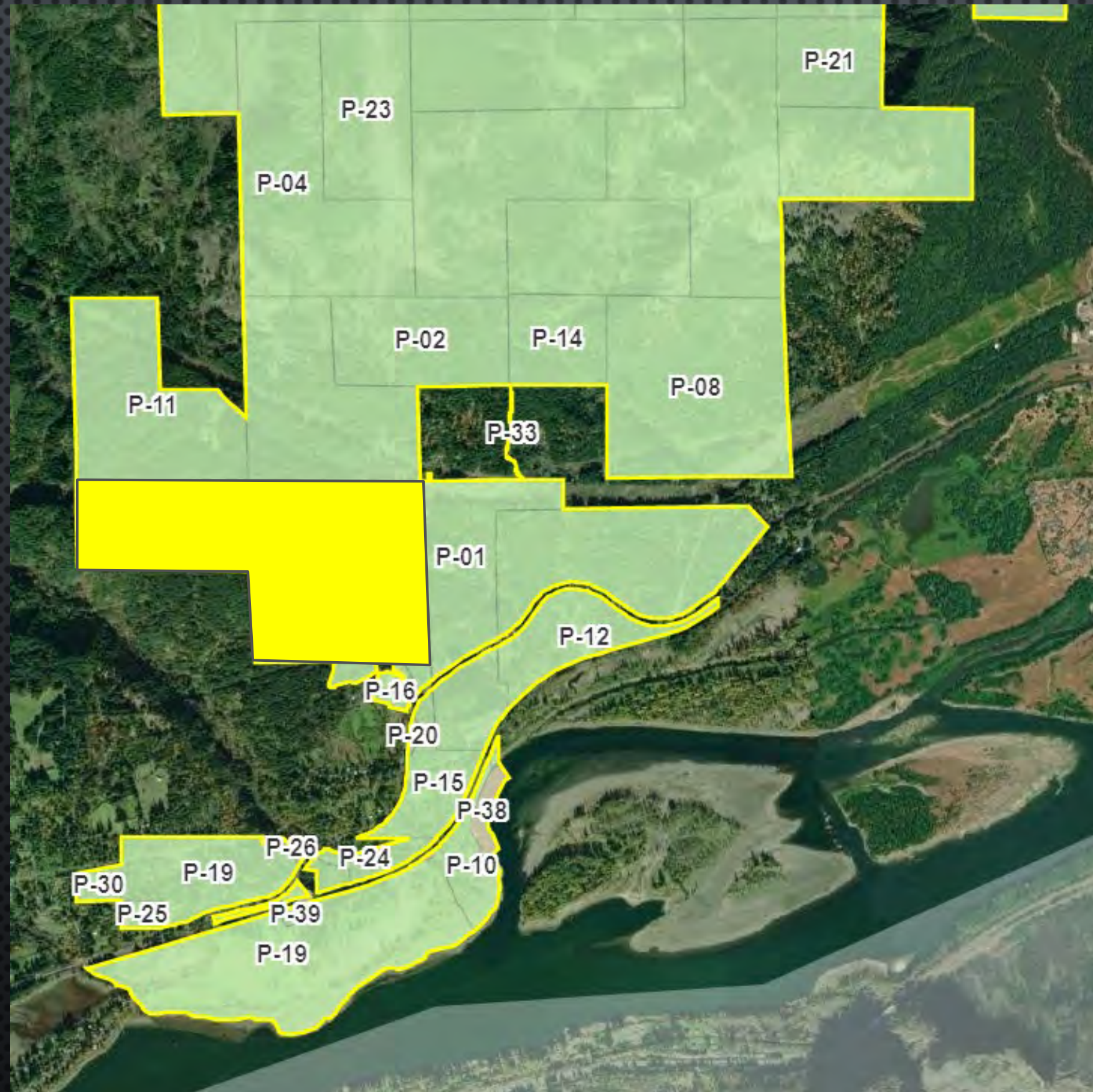
- 34,644 acres
- 25% of 130,000-acre state park system

Acquired through Trustland transfer

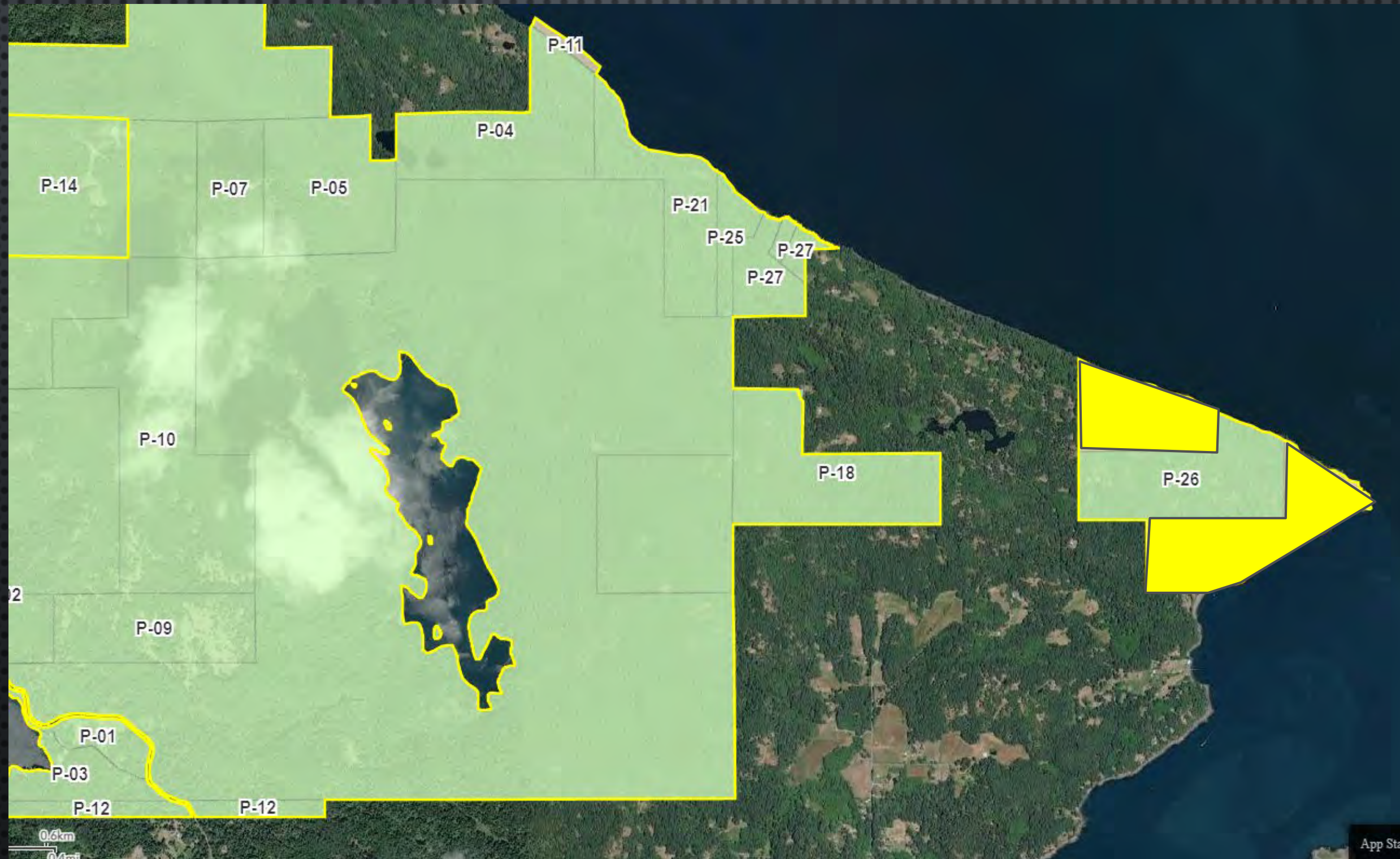
- 16,365 acres,
- 48 parcels in 34 parks
- 12% of 130,000-acre state park system

Beacon Rock State Park

240 Acres

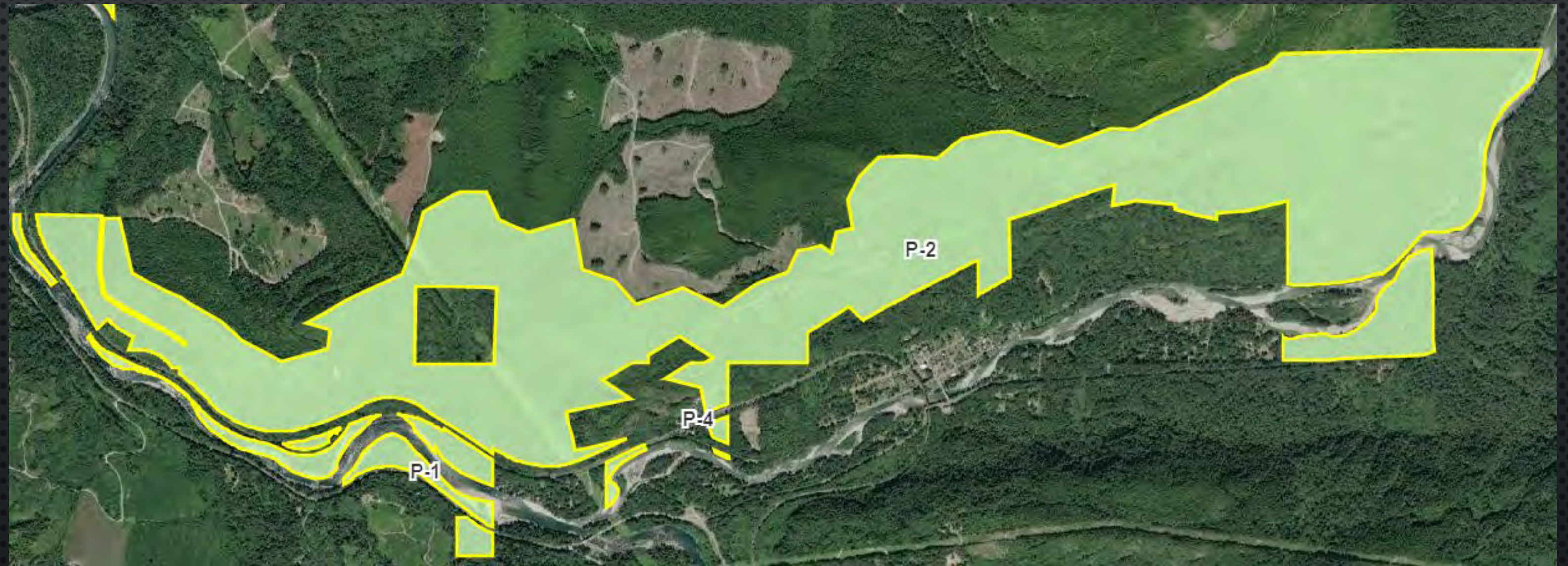


Moran State Park-Point Lawrence 180 Acres



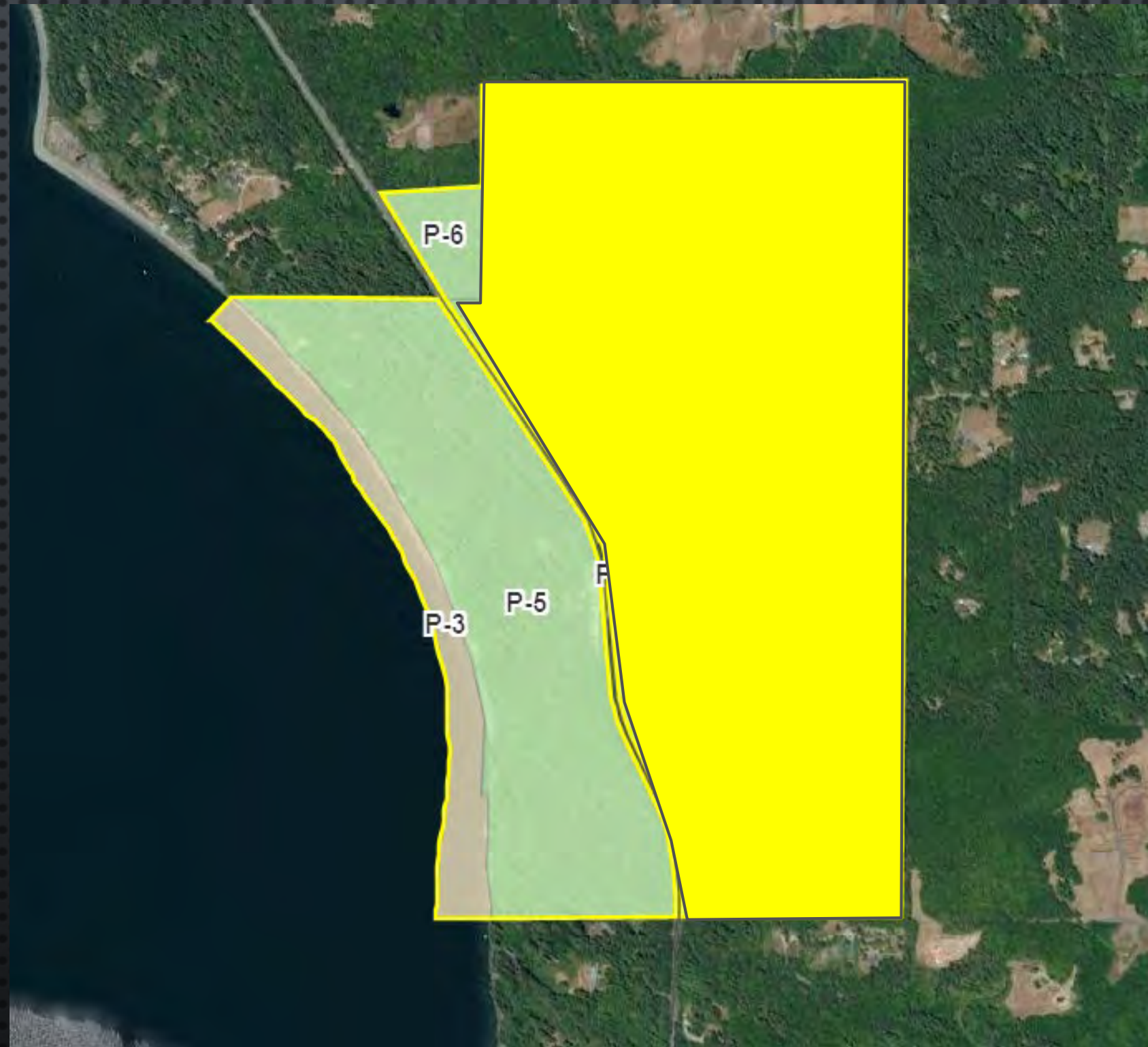
Forks of the Sky State Park

1280 Acres (P-2)



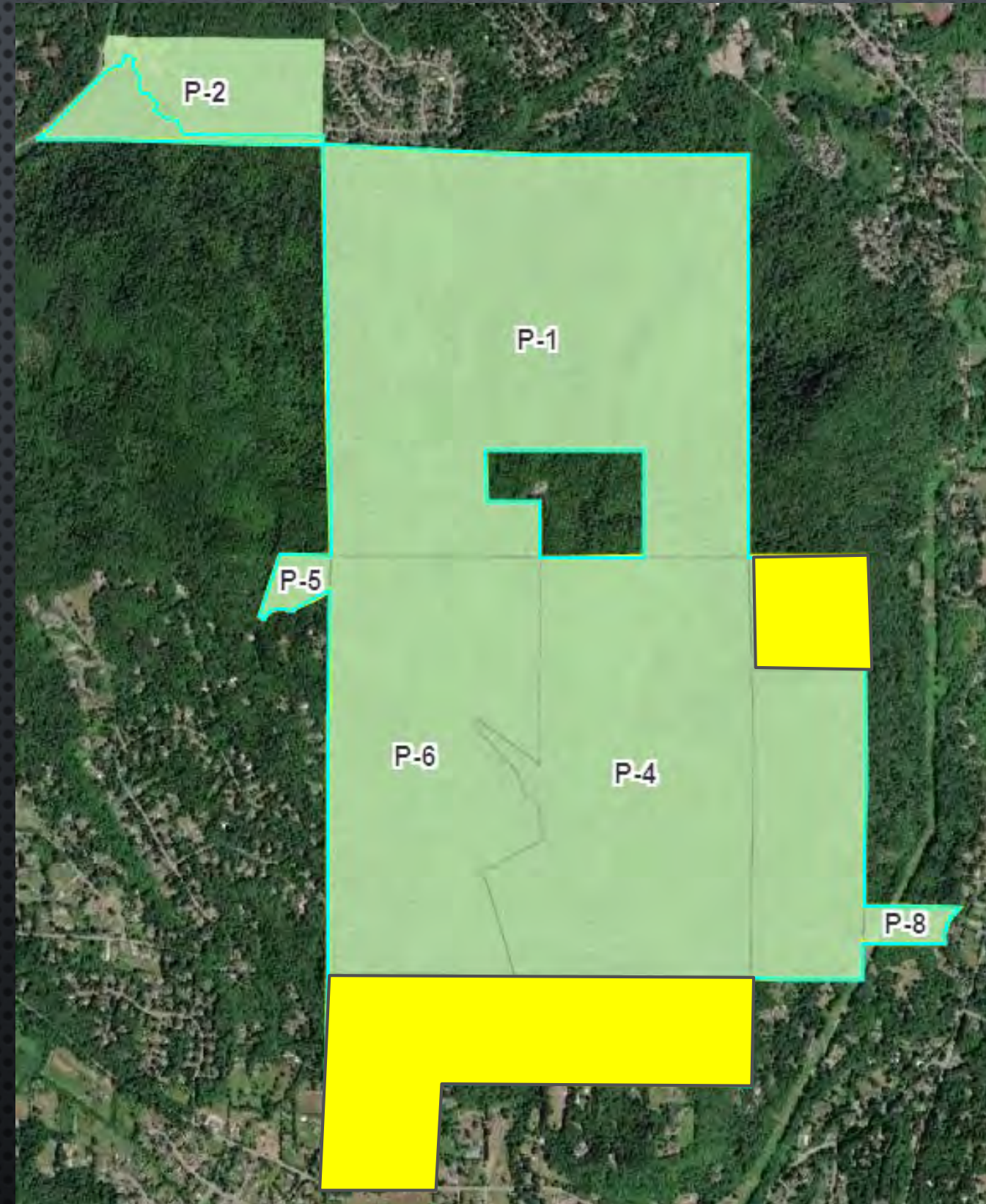
South Whidbey State Park

264 Acres

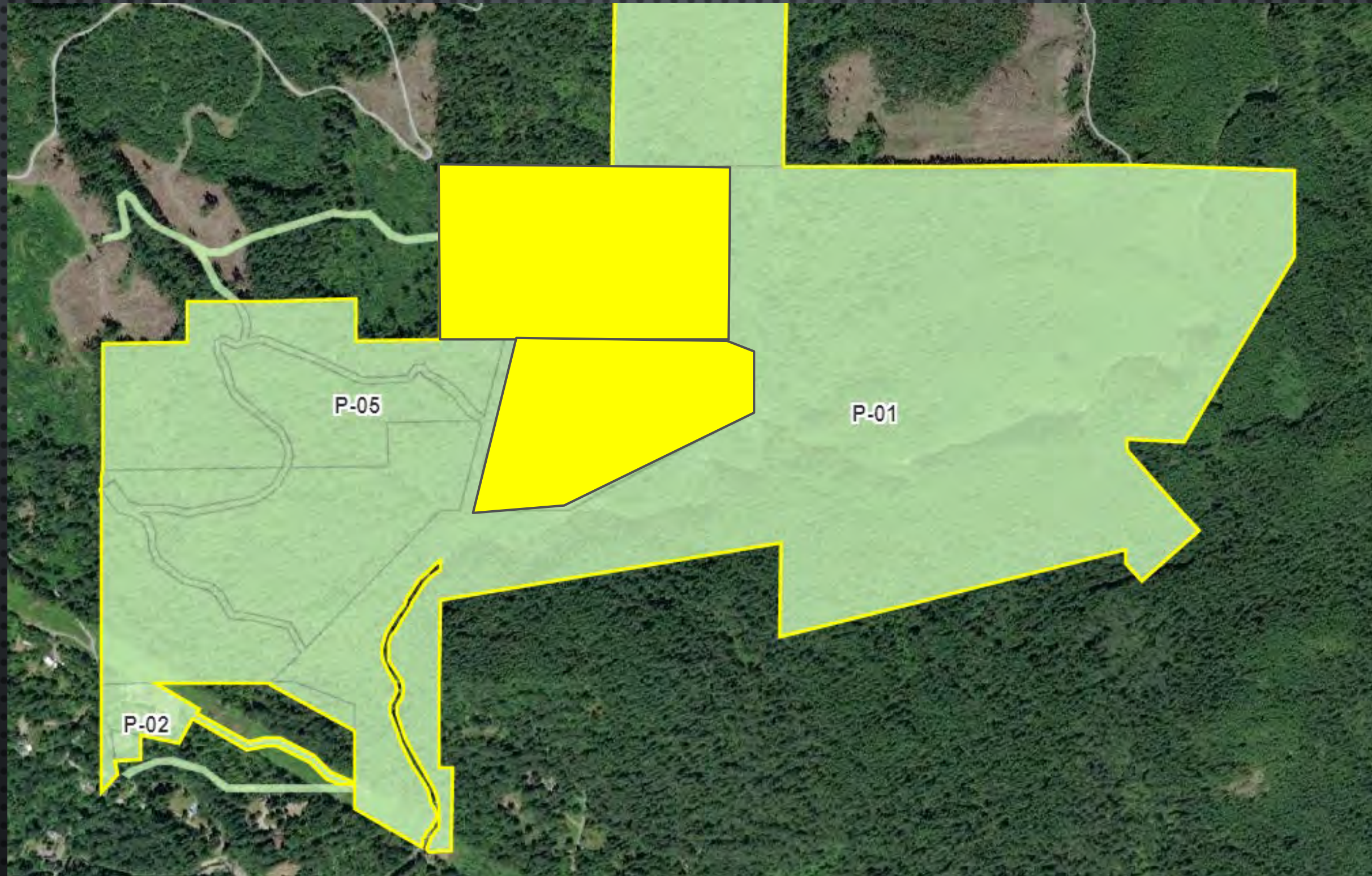


Squak Mountain State Park

364 Acres



Wallace Falls 850 Acres



Miller Peninsula Property

2,843 acres



Why are TLTs important to State Parks?

- Expand recreation
- Add protection to core natural features
- Less restricted than most acquisition grants
- Intensive management gateway opportunities

Why are TLTs important to all of us?

- State Parks contribute \$1.6B to the state's \$ 26B outdoor recreation economy (mostly rural communities)
- State Parks generate \$116M local/state taxes



Issues with Trustland Transfers

- Transition to 50-year leases – no practical acquisition fund source to purchase
- Control and tenure complicated
- DNR development approval
- Properties not always suitable to state park use



Opportunities with Trustland Transfers

- System-wide suitability analysis
- Long-term park boundary planning
- Coordinated recreation planning
- Financial analyses



GET IN TOUCH

FOR QUESTIONS AND SUGGESTIONS



MAILING ADDRESS

1111 Israel Rd, Tumwater, WA, 98501

EMAIL ADDRESS

peter.Herzog@parks.wa.gov

PHONE NUMBER

(360) 902 8652

