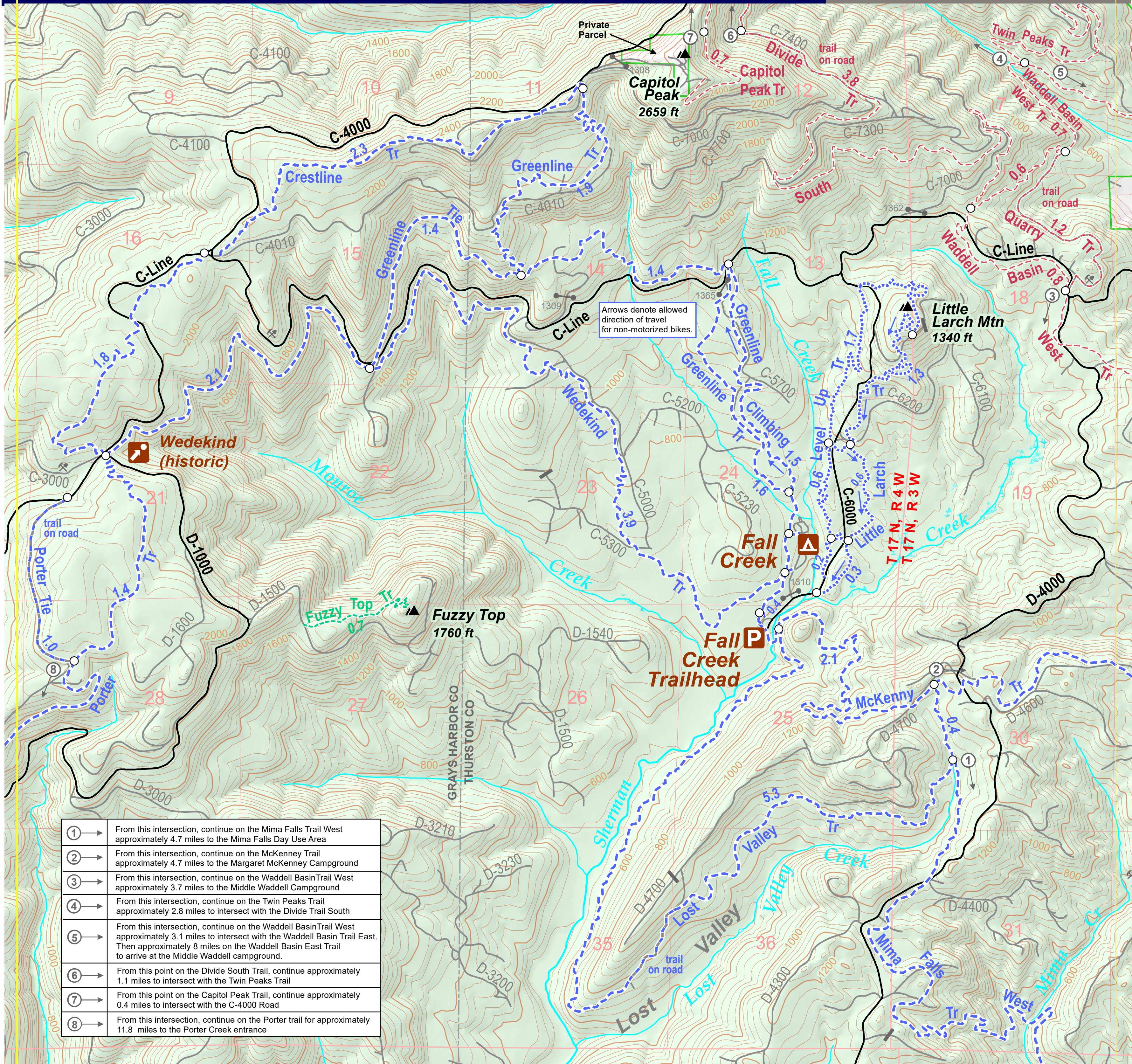


Fall Creek Trail System

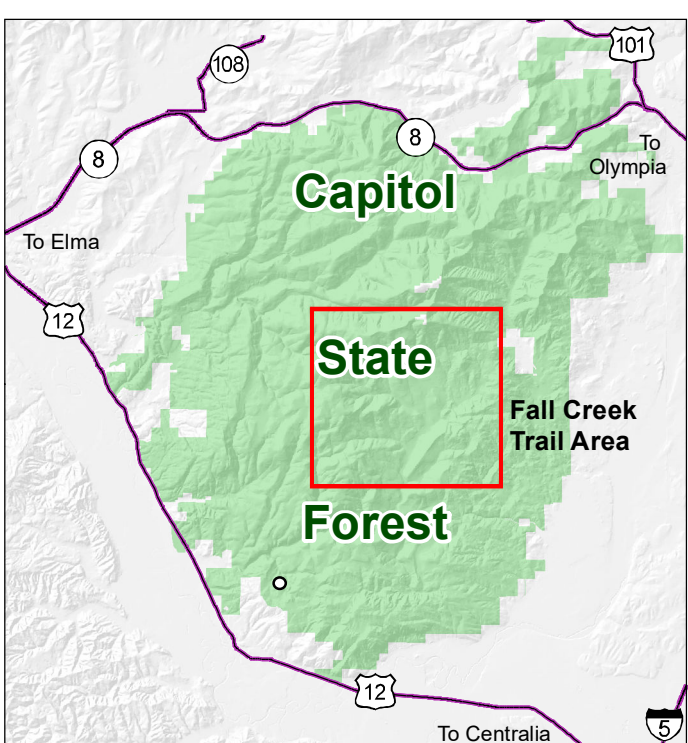
Capitol
State
Forest



- | | |
|---|---|
| ① | From this intersection, continue on the Mima Falls Trail West approximately 4.7 miles to the Mima Falls Day Use Area |
| ② | From this intersection, continue on the McKenny Trail approximately 4.7 miles to the Margaret McKenny Campground |
| ③ | From this intersection, continue on the Waddell Basin Trail West approximately 3.7 miles to the Middle Waddell Campground |
| ④ | From this intersection, continue on the Twin Peaks Trail approximately 2.8 miles to intersect with the Divide Trail South |
| ⑤ | From this intersection, continue on the Waddell Basin Trail West approximately 3.1 miles to intersect with the Waddell Basin Trail East. Then approximately 8 miles on the Waddell Basin East Trail to arrive at the Middle Waddell campground. |
| ⑥ | From this point on the Divide South Trail, continue approximately 1.1 miles to intersect with the Twin Peaks Trail |
| ⑦ | From this point on the Capitol Peak Trail, continue approximately 0.4 miles to intersect with the C-4000 Road |
| ⑧ | From this intersection, continue on the Porter trail for approximately 11.8 miles to the Porter Creek entrance |

0 1/2 1 2 3 Miles

1:17,500 Contour Interval 40 feet



- | | | | |
|--|---|--|--|
| | Capitol State Forest | | Hike |
| | Campground | | Hike / Non-Motorized Bike |
| | Parking or Trailhead | | Hike / Horse / Non-Motorized Bike |
| | Point of Interest | | Motorcycle / Quad* |
| | Rockpit | | Trail on Road: Hike / Horse / Non-Motorized Bike |
| | Road Block | | Trail on Road: Motorcycle / Quad* |
| | Gate with Number, closed | | Trail Mileage |
| | Other gates, not shown on the map, are normally open. However, they may be closed at any time to facilitate specific work projects. | | Primary Forest Road |
| | | | Secondary Forest Road |
- * Non-motorized uses are allowed on motorized trails, excluding horseback riding.

Note to map users: Extreme care was used during compilation of this map to ensure accuracy. However, due to changes in ownership and the need to rely on outside sources of information, the Department of Natural Resources cannot accept responsibility for errors or omissions. Therefore, there are no warranties which accompany this material.



dnr.wa.gov/MobileMaps