

Snoqualmie Corridor Recreation Plan

for
**State Trust Lands
and Natural Areas**

managed by
**The Washington State
Department of Natural Resources**



WASHINGTON STATE DEPARTMENT OF
Natural Resources

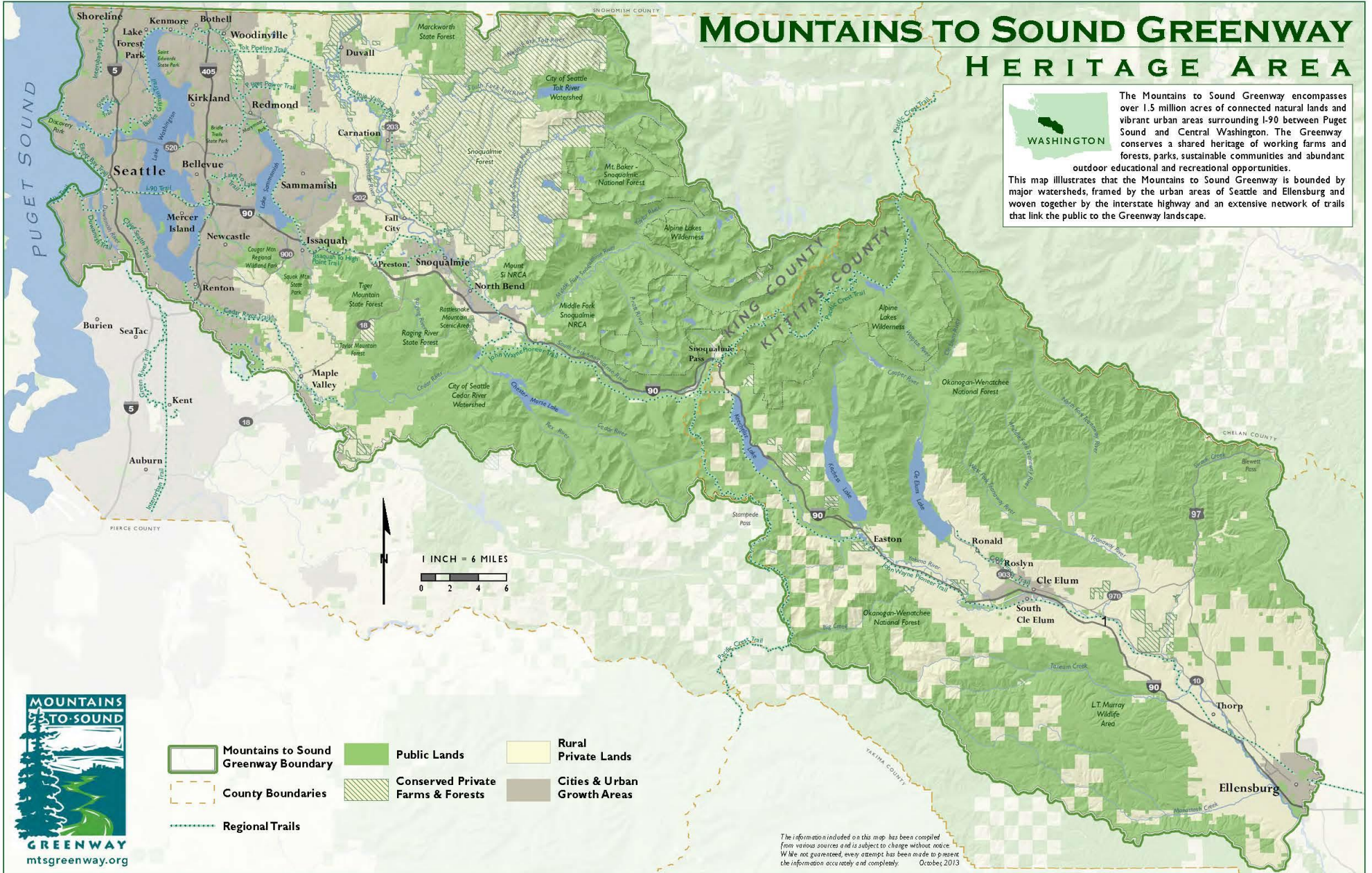
www.dnr.wa.gov

MOUNTAINS TO SOUND GREENWAY HERITAGE AREA



The Mountains to Sound Greenway encompasses over 1.5 million acres of connected natural lands and vibrant urban areas surrounding I-90 between Puget Sound and Central Washington. The Greenway conserves a shared heritage of working farms and forests, parks, sustainable communities and abundant outdoor educational and recreational opportunities.

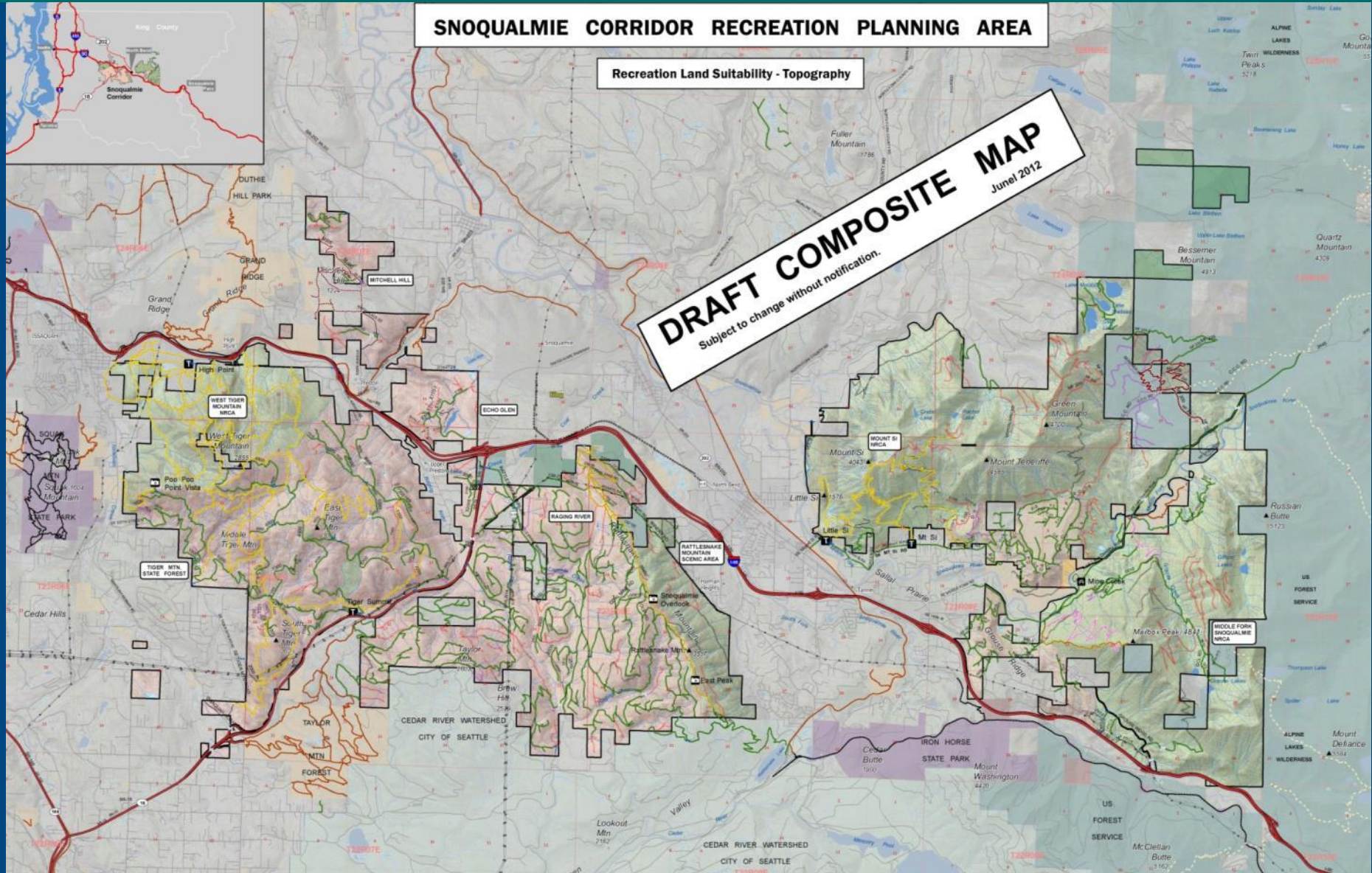
This map illustrates that the Mountains to Sound Greenway is bounded by major watersheds, framed by the urban areas of Seattle and Ellensburg and woven together by the interstate highway and an extensive network of trails that link the public to the Greenway landscape.



- Mountains to Sound Greenway Boundary
- County Boundaries
- Regional Trails
- Public Lands
- Conserved Private Farms & Forests
- Rural Private Lands
- Cities & Urban Growth Areas

The information included on this map has been compiled from various sources and is subject to change without notice. While not guaranteed, every attempt has been made to present the information accurately and completely. October 2013

Landscape Connections



Purpose of planning

- ▶ Develop objectives for managing recreation for next 10-15 years.
- ▶ Identify opportunities for connections across the landscape.
- ▶ Identify partnerships and volunteer opportunities.
- ▶ Determine what types of recreation will be provided in the forests and where.
- ▶ Establish priorities for implementing the plan.



Planning Goals

- ▶ Public safety
- ▶ Compatible with state trust and Natural Areas management obligations
- ▶ Resource protection
- ▶ Quality user experience



Planning Process & Timeline

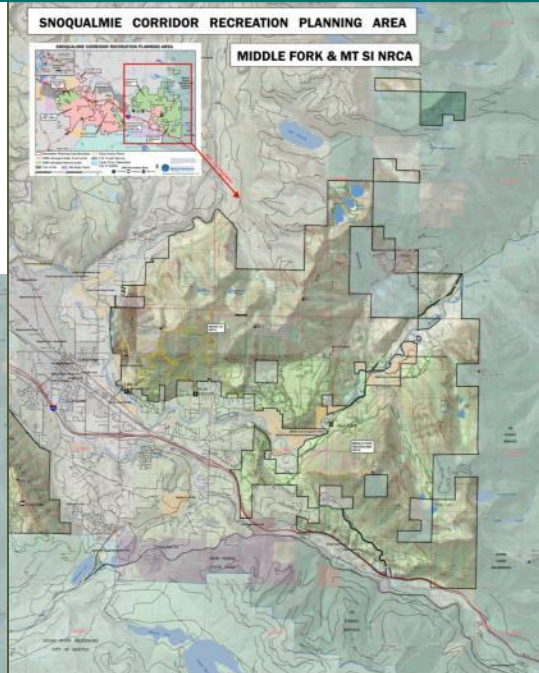
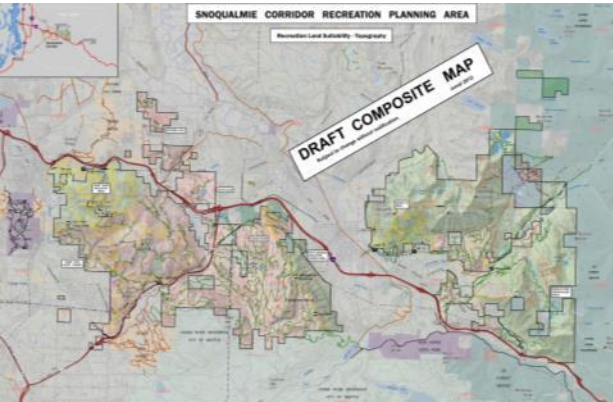
FALL 2011	PHASE 1: PREPLANNING Determine the need and scope, project team, stakeholder involvement plan, and data collection needs
WINTER 2012	 PROJECT KICKOFF Public Meeting, Finalize Recreation Planning Committee Committee to begin meeting in early March
WINTER & SPRING 2012	PHASE 2: INVENTORY / LAND SUITABILITY Determine the land suitability: gather biological, soil, geological and management data Determine community benefit and planning context for the project
SPRING & SUMMER 2012	PHASE 3: RECREATION INVENTORY / PUBLIC INVOLVEMENT Determine public issues and concerns, hold public meetings, collect recreation field data, online survey
SUMMER & FALL 2012	PHASE 4: ASSESSMENT Suitability analysis: opportunities and constraints Determine the 'BIG IDEA', or management concept for the planning area (what are we going to do where?)
WINTER & SPRING 2013	PHASE 5: ALTERNATIVE(S) Determine and describe the preferred alternative for the project, document preparation and production
SUMMER 2013	PHASE 6: SEPA PUBLIC REVIEW & COMMUNICATIONS SEPA is conducted, plan is edited and formatted for publication
FALL 2013	PHASE 7: ADOPTION Plan is adopted by the agency



Public Meeting: Listening Stations

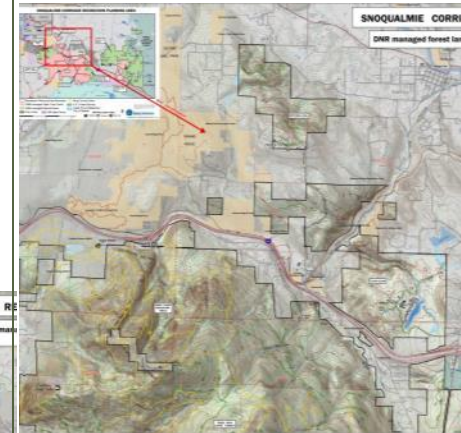
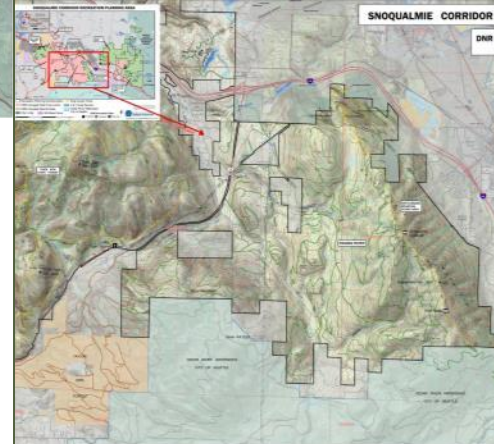
Station 1. Landscape Connections

- What opportunities are there to connect trails between DNR-managed lands, communities, and local, state and federal lands?



Station 3: Raging River State Forest

- What recreational opportunities would you like to see?
- Do you have concerns about the future management of this area?



Station 4: Trust lands: surrounding the community of Preston

- What recreational opportunities would you like to see?
- What is your favorite place to visit?
- What is missing from your experience in this area?

Station 2: Middle Fork Snoqualmie and Mt. Si NRCA

- What do you enjoy about recreation in this area?
- What is your favorite place to visit?
- What is missing from your experience in this area?
- Do you have concerns about the future recreation management of this area?

Station 5. Questions and Issues we might have missed?

Recreation Planning Committee

Data Gathering

- ▶ Biological Data
- ▶ Soils/ Geology Data
- ▶ Management Data
- ▶ Field Visits
- ▶ Field Inventory of Current Use
- ▶ Public Input
- ▶ Recreation Trends
- ▶ User Survey
- ▶ Adjacent Land Uses & opportunities
- ▶ Community Input

Assessment

- ▶ Land Suitability Analysis
- ▶ Field Visits
- ▶ Issue Sorting from:
 - Survey Results
 - Public Meeting
 - Committee Input
 - Ongoing Public Input
- ▶ Evaluate Costs of Capital
- ▶ Development & Maintenance

Recommendations

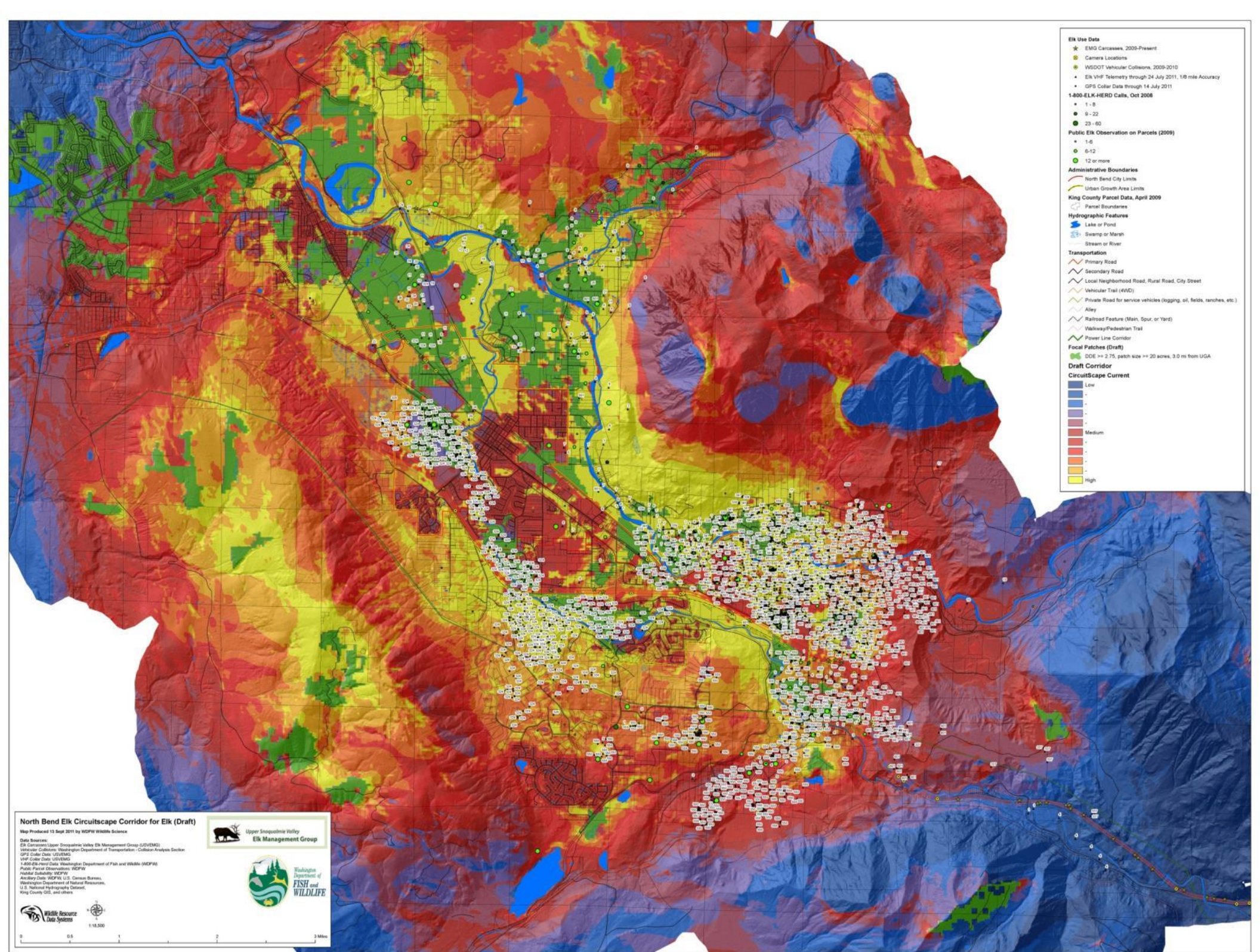
- ▶ Committee Brainstorming
- ▶ Preliminary Recommendations
- ▶ Develop/Review Draft Recreation Concept Plans
- ▶ Prioritize Implementation Timeline
- ▶ Final Concept Plan
- ▶ Committee Recommendation






Public Use







- Elk Use Data**
- ★ EMG Carcasses, 2009-Present
 - Camera Locations
 - WSDOT Vehicular Collisions, 2009-2010
 - Elk VHF Telemetry through 24 July 2011, 1/8 mile Accuracy
 - GPS Collar Data through 14 July 2011
- 1-800-ELK-HERD Calls, Oct 2008**
- 1-8
 - 9-22
 - 23-60
- Public Elk Observation on Parcels (2009)**
- 1-6
 - 6-12
 - 12 or more
- Administrative Boundaries**
- North Bend City Limits
 - Urban Growth Area Limits
- King County Parcel Data, April 2009**
- Parcel Boundaries
- Hydrographic Features**
- Lake or Pond
 - Swamp or Marsh
 - Stream or River
- Transportation**
- Primary Road
 - Secondary Road
 - Local Neighborhood Road, Rural Road, City Street
 - Vehicular Trail (4WD)
 - Private Road for service vehicles (logging, oil, fields, ranches, etc.)
 - Alley
 - Railroad Feature (Main, Spur, or Yard)
 - Walkway/Pedestrian Trail
 - Power Line Corridor
- Focal Patches (Draft)**
- DDE \Rightarrow 2.75, patch size \Rightarrow 20 acres, 3.0 mi from UGA
- Draft Corridor**
- Circuitscape Current**
- Low
 - Medium
 - High

North Bend Elk Circuitscape Corridor for Elk (Draft)
 Map Produced 13 Sept 2011 by WDFW Wildlife Science

 Upper Skagitine Valley
Elk Management Group

 Washington
Department of
FISH and WILDLIFE

Data Sources:
 Elk Carcasses: Upper Skagitine Valley Elk Management Group (USVEMG)
 Vehicular Collisions: Washington Department of Transportation - Collision Analysis Section
 GPS Collar Data: USVEMG
 VHF Collar Data: USVEMG
 1-800-ELK-HERD Data: Washington Department of Fish and Wildlife (WDFW)
 Public Parcel Observations: WDFW
 Habitat Suitability: WDFW
 Ancillary Data: WDFW GIS, Census Bureau, Washington Department of Natural Resources, U.S. National Hydrographic Dataset, King County GIS, and others

 Wildlife Resource Data Systems

1:15,000

0 0.5 1 2 3 Miles

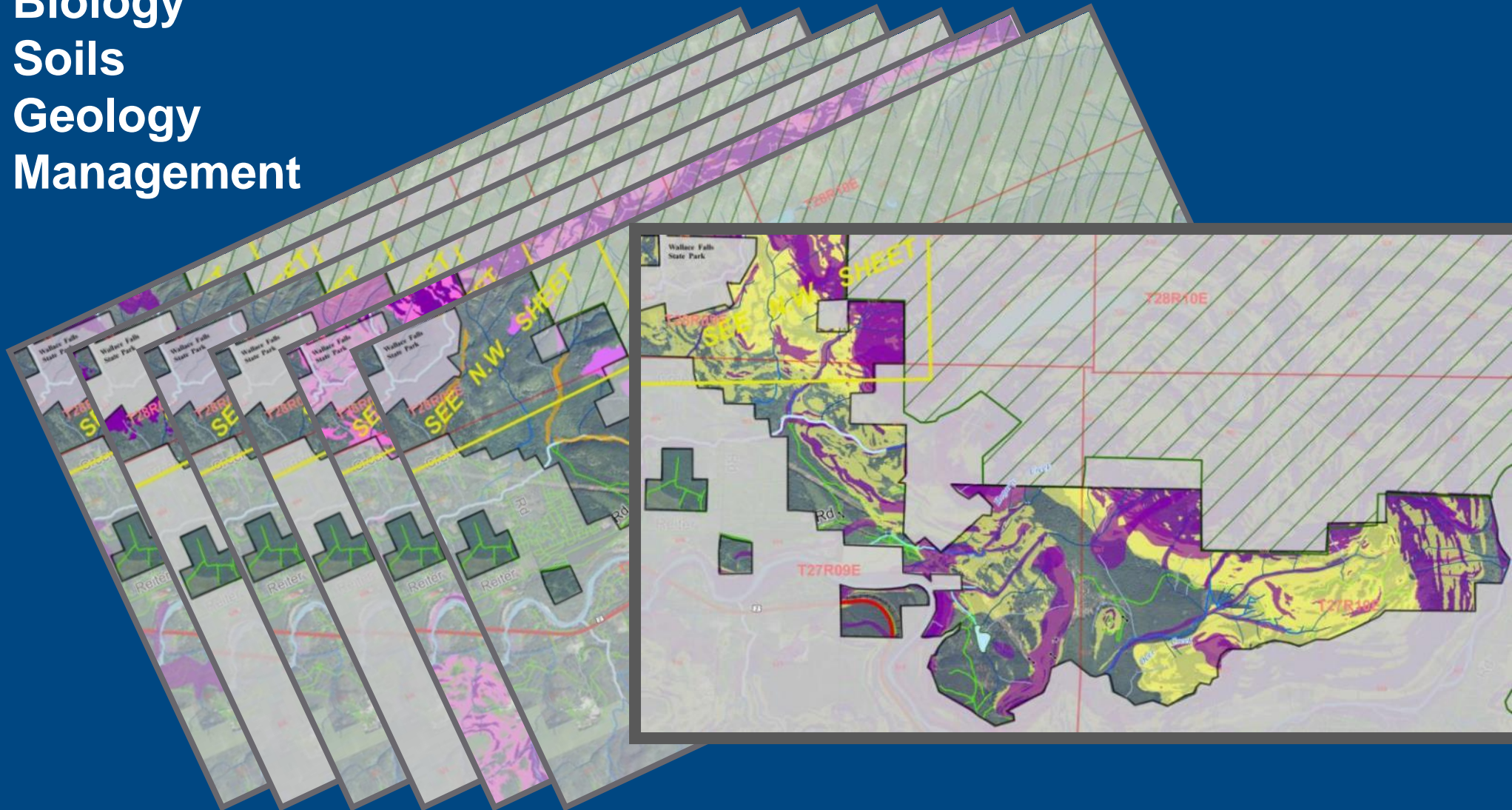
Land Suitability Assessment

Biological Criteria	Geologic / Soils Criteria	Management Criteria
Wetlands and wetland buffers	Soil types	Communication sites
Fish habitat	Erosion potential	Rock sources
Riparian areas and riparian buffers	Poor drainage	Private mining and rock removal
Talus, cliffs, caves, and balds	Deep-seated landslides	Utility easements & BPA substation
Suitable Marbled Murrelet habitat	High potential for landslides	Proximity to correctional facilities
Northern Spotted Owl nest patches	Slope steepness	Proximity to private residences and rural roads
Elk, Columbian Black Tailed Deer	Perched water tables	Water sources and watersheds
Mountain goat habitat	Alluvial fans	Cultural/archaeological resources
High quality and rare plant communities	100 year flood plains	Conservation easements
Sensitive, threatened, or endangered species		Private in-holdings

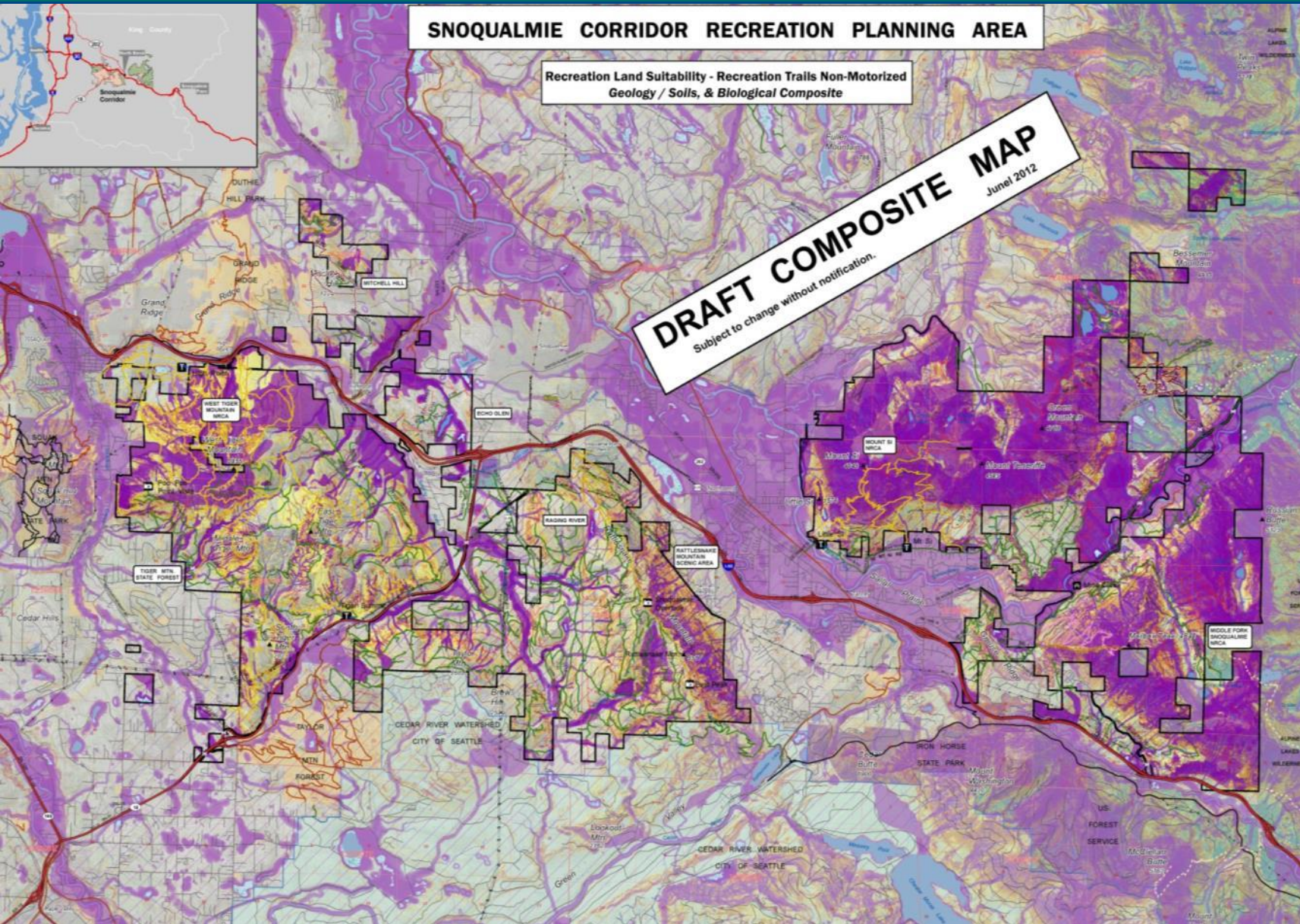
Recreation Land Suitability

Maps guide recreation planning efforts

Biology
Soils
Geology
Management



Composite Suitability Map



Criteria:

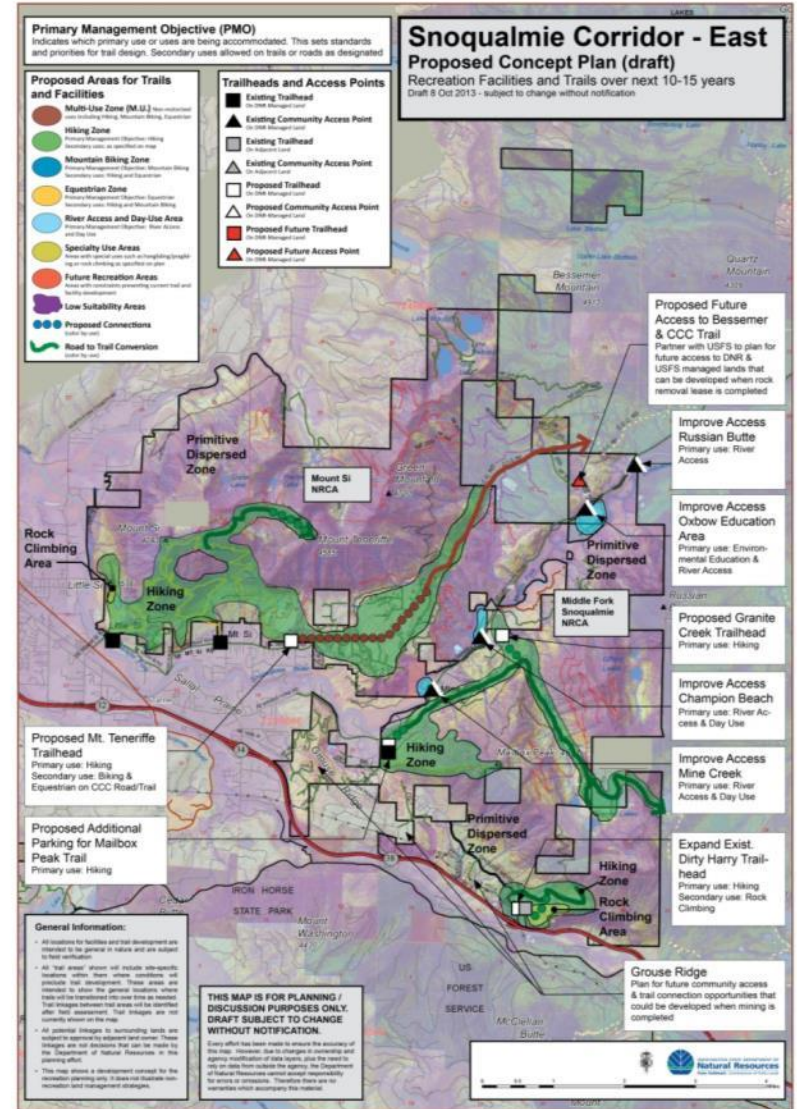
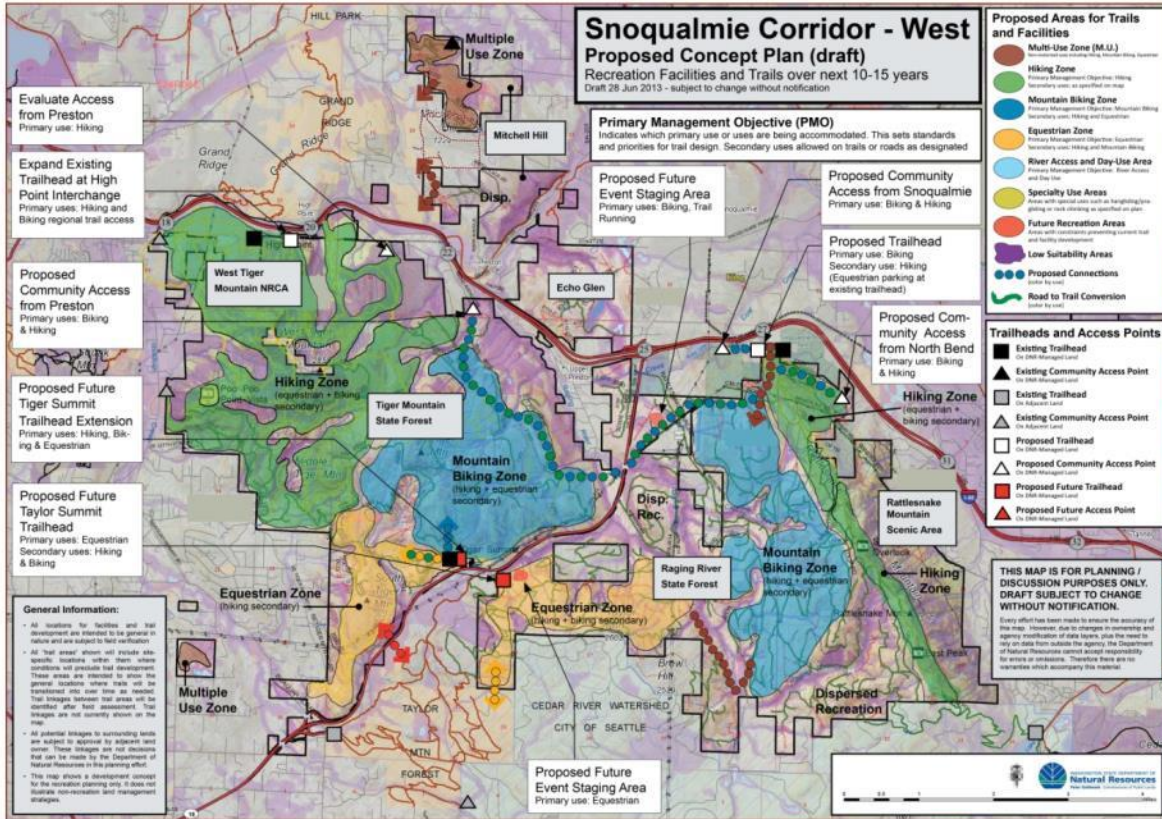
- Biology
- Soils /Geology
- Management



Field Trips



Draft Recreation Plan



Implementation Priorities and Phases

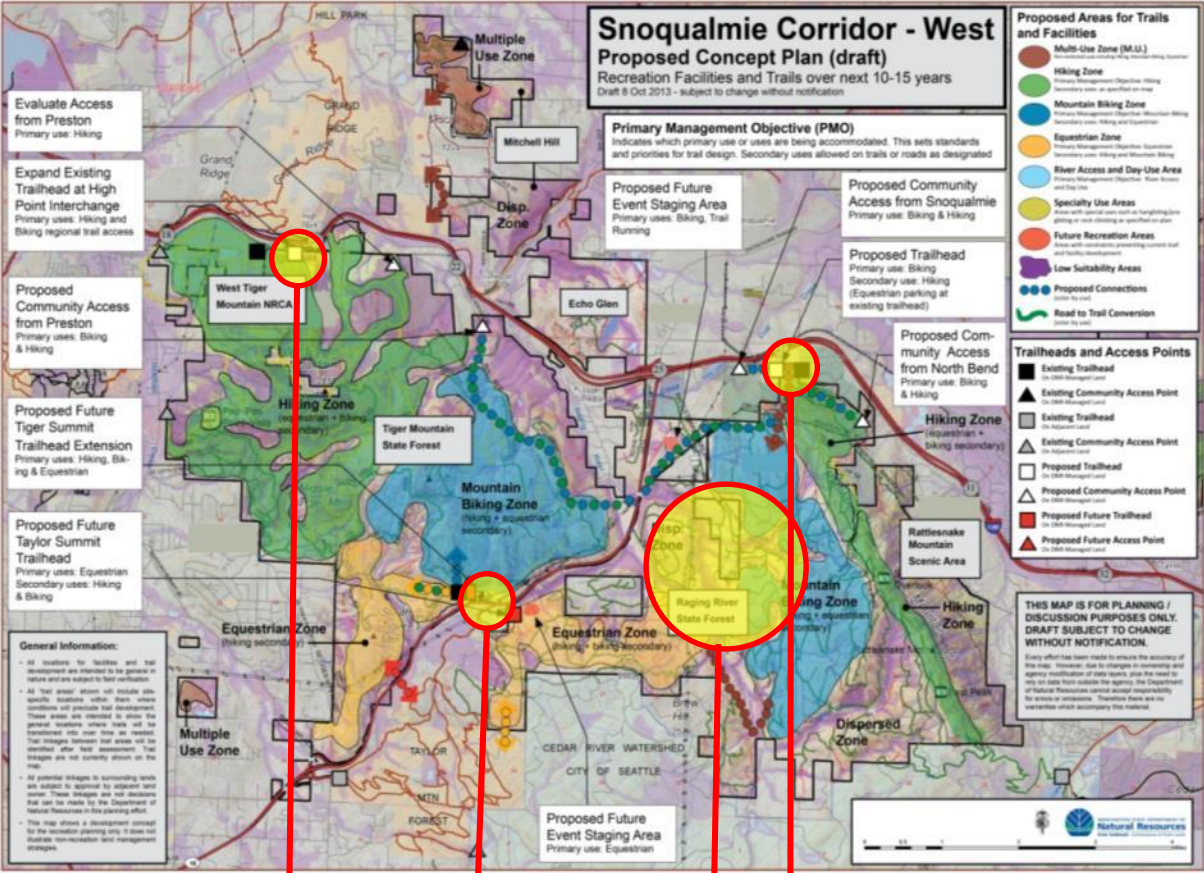
Table 5. Implementation Priorities and Phases

Phase	Landscape	Project
Phase I	Tiger Mountain State Forest & West Tiger Mountain NRCA	PMO Biking Area: improve and expand mountain biking trail system on East Tiger
		Connections: improve connections from Tiger Summit Trailhead to hiking, biking and horseback riding opportunities
		Local Access from Preston to East Tiger: work with surrounding landowners to establish local access for hikers and bikers
	Raging River State Forest & Rattlesnake Mountain Scenic Area	Local Access from North Bend: pursue partnerships and work with surrounding landowners to establish local access to Rattlesnake Mountain Trailhead and to future Raging River State Forest trail system.
		PMO Biking Area: develop new mountain biking trails, providing a variety of experiences; hiking and horseback riding to be secondary uses when compatible; uses to be separated where practical
		Trailhead at Exit 27: pursue partnerships to develop a new trailhead serving the PMO mountain biking area in the Raging River
		PMO Equestrian Area: develop equestrian connections from Raging River State Forest to Taylor Mountain County Forest;
	Mount Si NRCA & Middle Fork Snoqualmie NRCA	Middle Fork River access and day-use: evaluate, design and develop river access and day use opportunities; pursue partnerships to develop a consistent management strategy in the valley
		Mount Teneriffe Trailhead: develop new trailhead for hiking to Teneriffe Falls and summit and for hiking, biking and horseback riding on the CCC Road
		Mount Teneriffe road to trail: develop new hiking trail up to summit area using existing road-to-trail conversion where practical
Granite Creek Trailhead: develop new trailhead near Granite Creek Flats and construct new hiking trail connection to the Granite Creek Trail		
Granite Creek Trail: improve existing Granite Creek Trail for hiking to Granite Lakes		
Rural Lands	Dirty Harry road to trail: develop sustainable trail from trailhead at Exit 38 to Dirty Harry's Balcony using existing road-to-trail conversion where practical	
Planning for future opportunities	Local Access and Connections: work with King County to develop large loop, low density connections between Mitchell Hill, Grand Ridge and the trail along I-90 for hiking, biking and horseback riding	
Phase II	Tiger Mountain State Forest & West Tiger Mountain NRCA	Highway 18: monitor SR-18 improvement project and work with the Washington Department of Transportation to plan for future trailhead and recreation/wildlife crossings.
		Preston Connection to East Tiger: develop trail connection for hiking and biking from Preston to East Tiger
	Raging River State Forest	Trailhead at High Point Interchange: develop new trailhead serving hiking trails in West Tiger Mountain NRCA as well as non-motorized multi-use trails on the north side of I-90 including the Issaquah-Preston Trail and Grand Ridge
		PMO Equestrian Area: Plan and develop new equestrian trails in the Raging River accessed from Taylor Mountain County Forest; secondary uses to be hiking and biking if compatible.
		CCC Trail: Complete existing CCC road-to-trail conversion for hiking, biking and horseback riding
Mount Si NRCA & Middle Fork Snoqualmie NRCA	Dirty Harry Rock Climbing Area: develop and improve sustainable connections from Dirty Harry Trailhead to rock climbing opportunities and to Dirty Harry's Balcony	
	Mailbox Peak Parking: expand parking near Mailbox Peak Trailhead if practical	
Rural Lands	Mitchell Hill: work with surrounding land owners and King County to plan and develop a trail network for hiking, biking and horseback riding	

Phase III	West Tiger Mountain NRCA	Local Access from Preston to West Tiger: pursue partnerships to evaluate local access for hiking in West Tiger Mountain NRCA
	SR18 highway crossing	SR18 Crossing at Raging River: develop trail connection for hiking and biking between East Tiger and the Raging River State Forest, crossing underneath SR18 at the Raging River
	Raging River State Forest	Local accesses from Snoqualmie: pursue partnerships and work with surrounding landowners to develop local access to Raging River State Forest, Snoqualmie Point and Rattlesnake Mountain Scenic Area
	Mount Si NRCA & Middle Fork Snoqualmie NRCA	CCC Trail Connection: develop a new trail connection for hiking, biking and horseback riding from Mt. Teneriffe Trailhead to the CCC Trail
		Thompson Lake Connection: improve the existing hiking trail from Granite Lakes to Thompson Lake in the Alpine Wilderness
Dirty Harry Trailhead: pursue partnerships to expand the existing trailhead for hiking and rock climbing		
Rural Lands	South Fork River: evaluate day use opportunities along the South Fork of the Snoqualmie River accessed from the Dirty Harry Trailhead	
	Isolated Parcels SW of Tiger Mountain: work with King County and surrounding landowners to evaluate recreation opportunities	

Future*	Tiger Mountain State Forest & Raging River State Forest (When SR18 improvements occur)	Event Staging: pursue partnerships to plan and develop staging areas in the Raging River State Forest for organized events once new trail systems are in place and traffic safety issues on SR18 are addressed. An area located in the north end of the forest would primarily serve trail running and mountain biking events. An area in the south end of the forest on Taylor Mountain would primarily serve equestrian events.
		Taylor Summit Trailhead: develop a new trailhead serving the PMO equestrian area in the Raging River State Forest accessed from the anticipated future summit-SR18 interchange. Work with WSDOT to coordinate the planning of new trailhead with interchange design.
		Tiger Summit Trailhead: develop a new trailhead serving hiking, biking and equestrian opportunities on Tiger Mountain accessed from the anticipated future summit-SR18 interchange. Work with WSDOT to coordinate the planning of new trailhead with interchange design.
		PMO Equestrian area: Complete the development of trail network accessed from Taylor Summit Trailhead with equestrian as the primary use and hiking and biking as secondary uses where compatible, including potential access to vistas and unique features such as a possible hiking trail to Shaun Falls.
		SR 18 Crossing at Holder Creek: work with WSDOT to evaluate the practicality and suitability of developing a combined wildlife, hiking, and equestrian connection under SR-18 at Holder Creek between South Tiger and the Taylor Mountain County Forest in conjunction with SR-18 upgrades.
	Mount Si NRCA & Middle Fork Snoqualmie NRCA	Connections: evaluate the practicality of developing loop trails connecting Mailbox Peak, Dirty Harry and Granite Lakes
		Bessemer: partner with the USFS to evaluate the possible future road-to-trail conversion up to the CCC Trail and Bessemer Ridge. The road accesses both USFS and DNR-managed lands and is currently being used to support a rock removal lease.
	Grouse Ridge: Evaluate potential recreation opportunities in the Grouse ridge Area that could be developed after mining is completed. Identify priority access points and connection routes for future development	
* Future items are contingent on the completion of SR-18 improvements or leases at Bessemer and Grouse Ridge before they can be developed. Planning to be done ahead of time to develop strategic partnerships and to identify critical pieces and coordination items for the future development of recreation opportunities.		

Draft Site Concepts

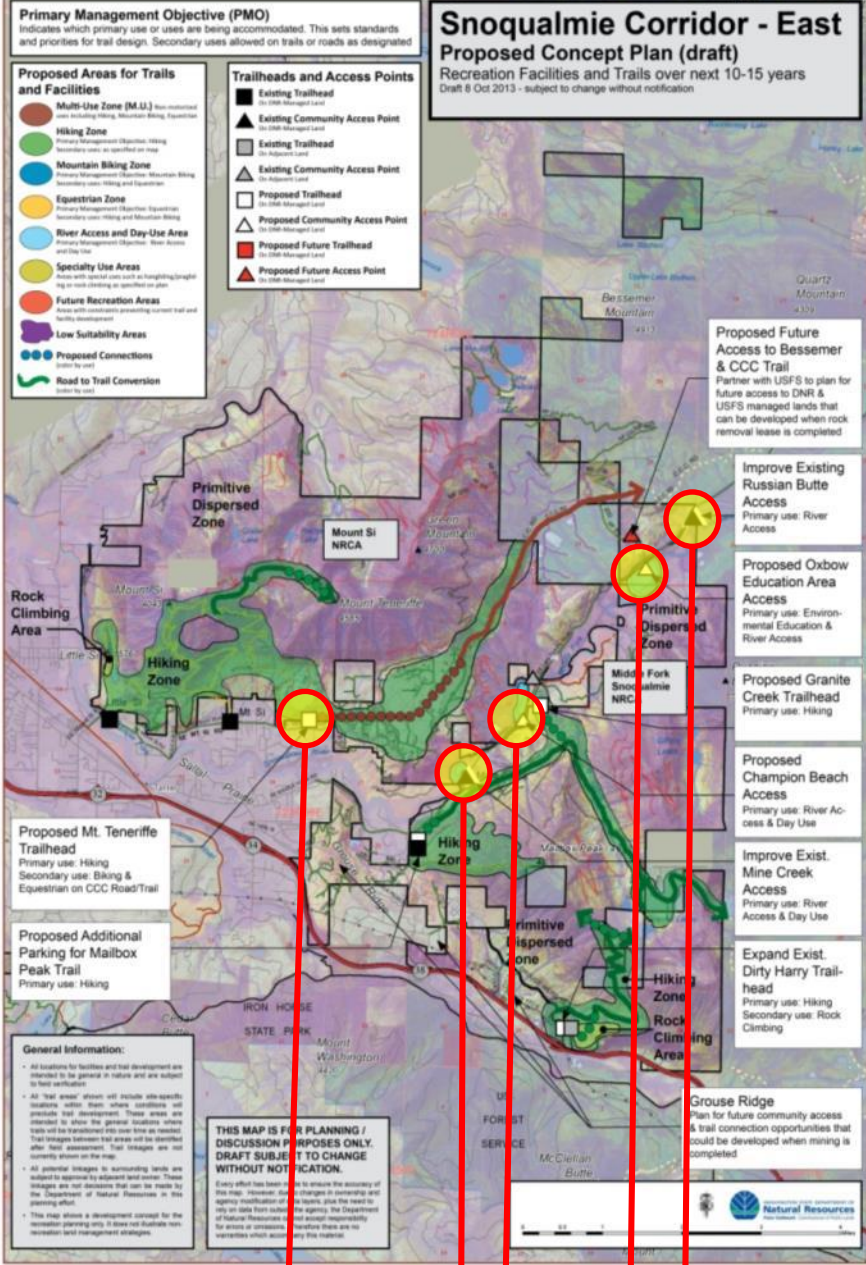


Highpoint
Trailhead

Summit
Trailheads

Raging Trails

Exit 27
Trailhead



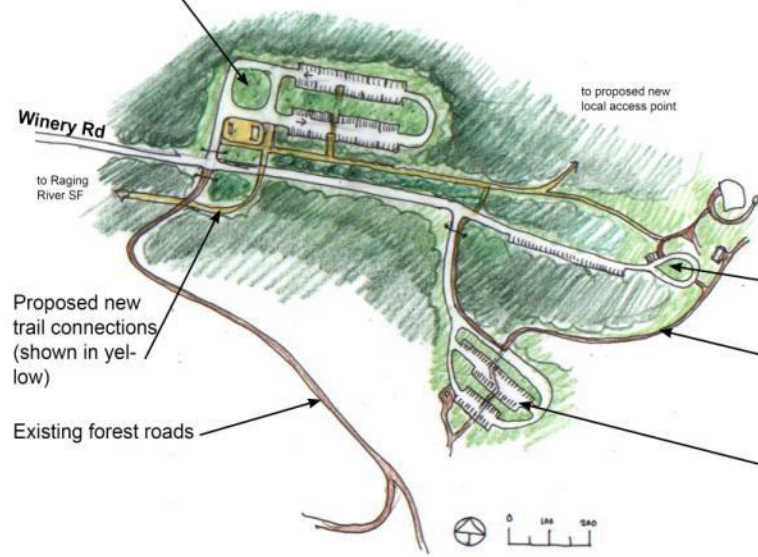
Teneriffe
Trailhead

Mine Creek
Champion

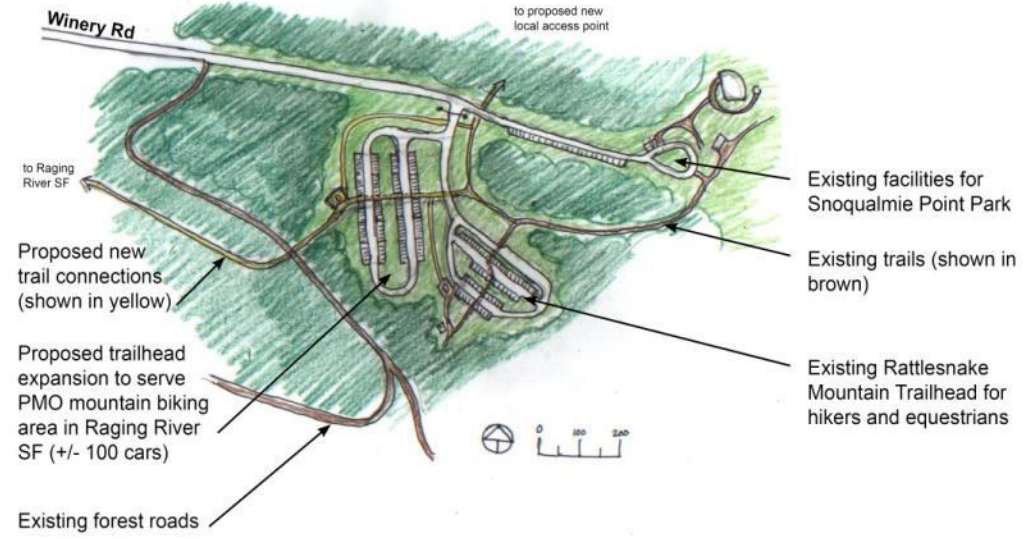
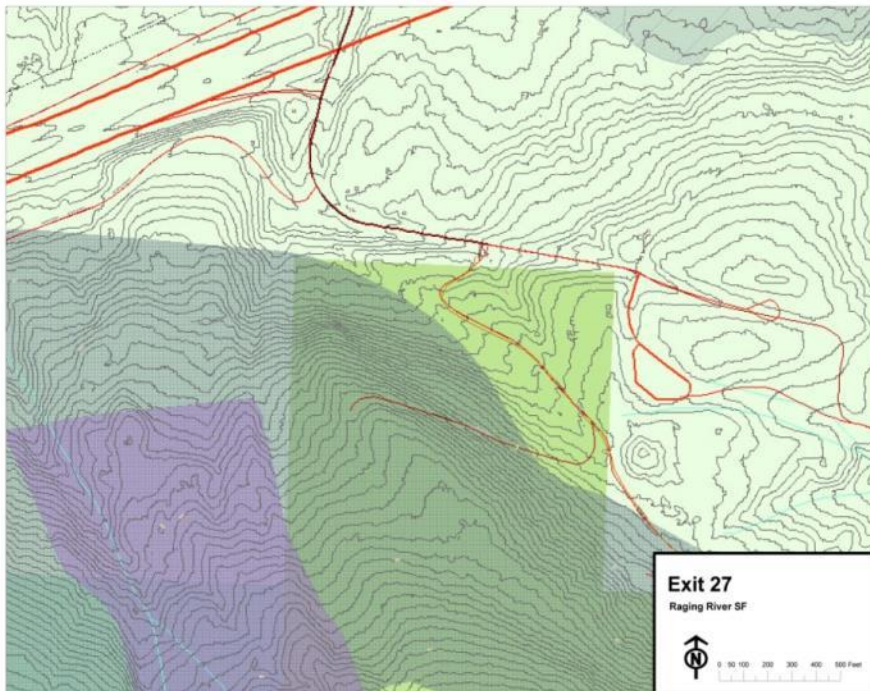
Oxbow Lake

Russian
Butte

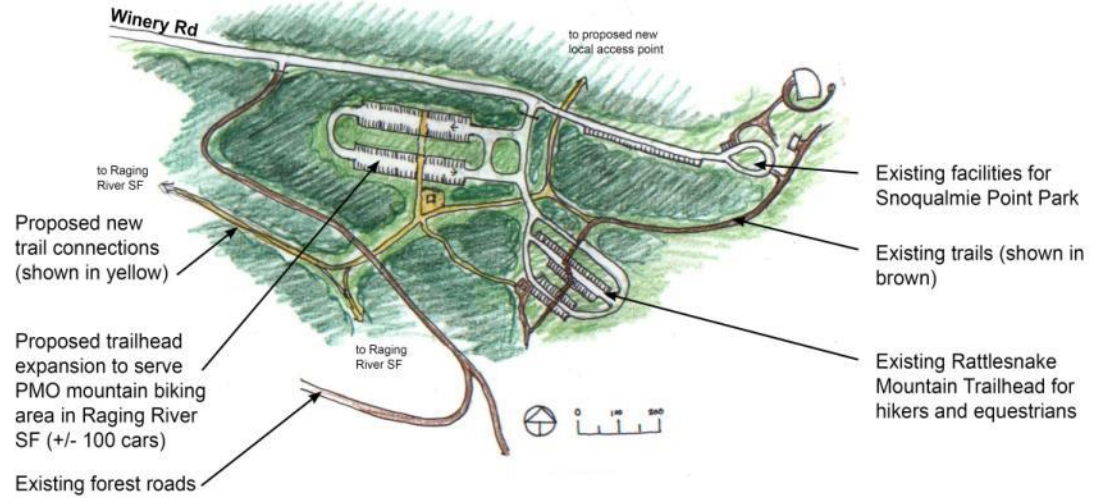
Proposed trailhead expansion to serve PMO mountain biking area in Raging River SF (+/- 100 cars)



Concept C



Concept B1

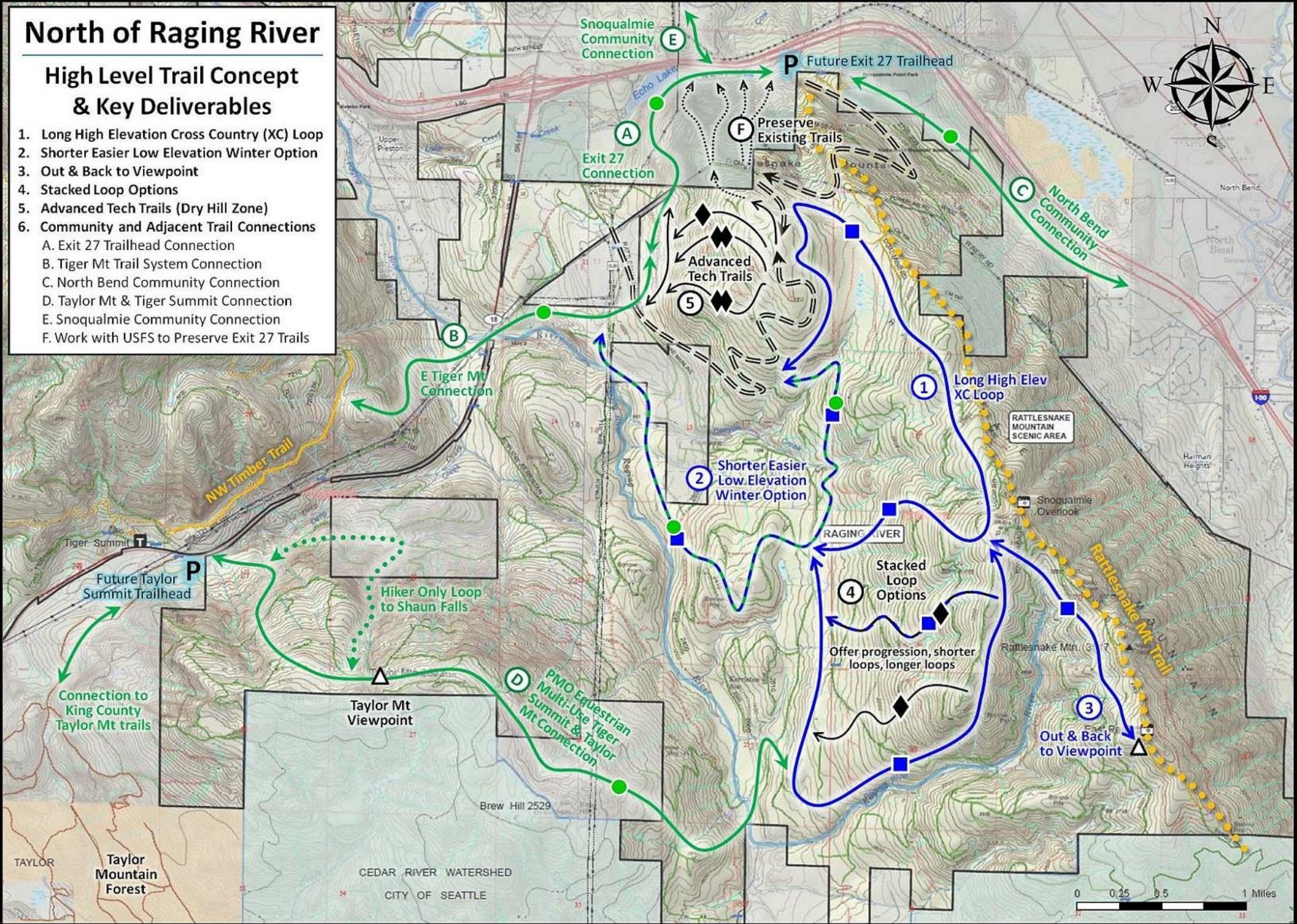


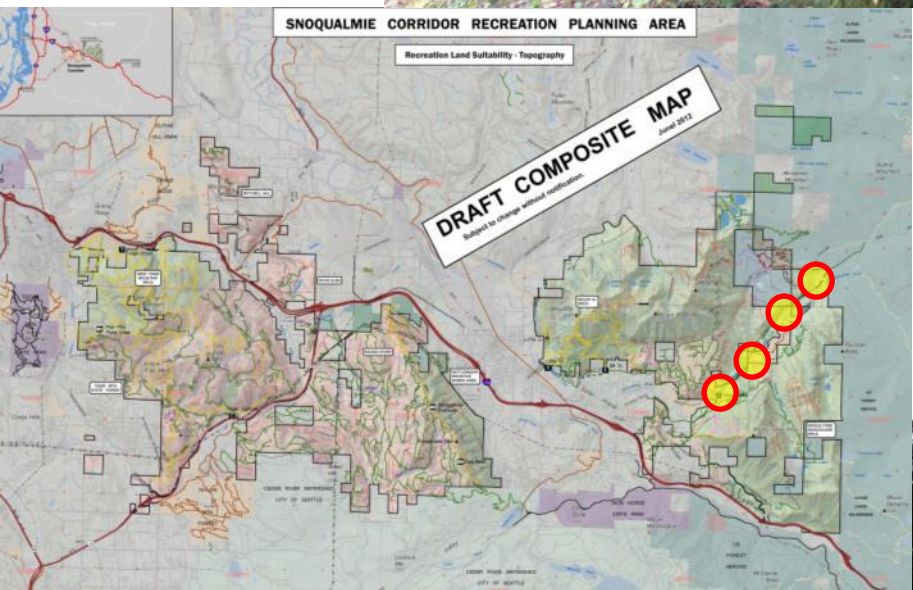
Concept B2

North of Raging River

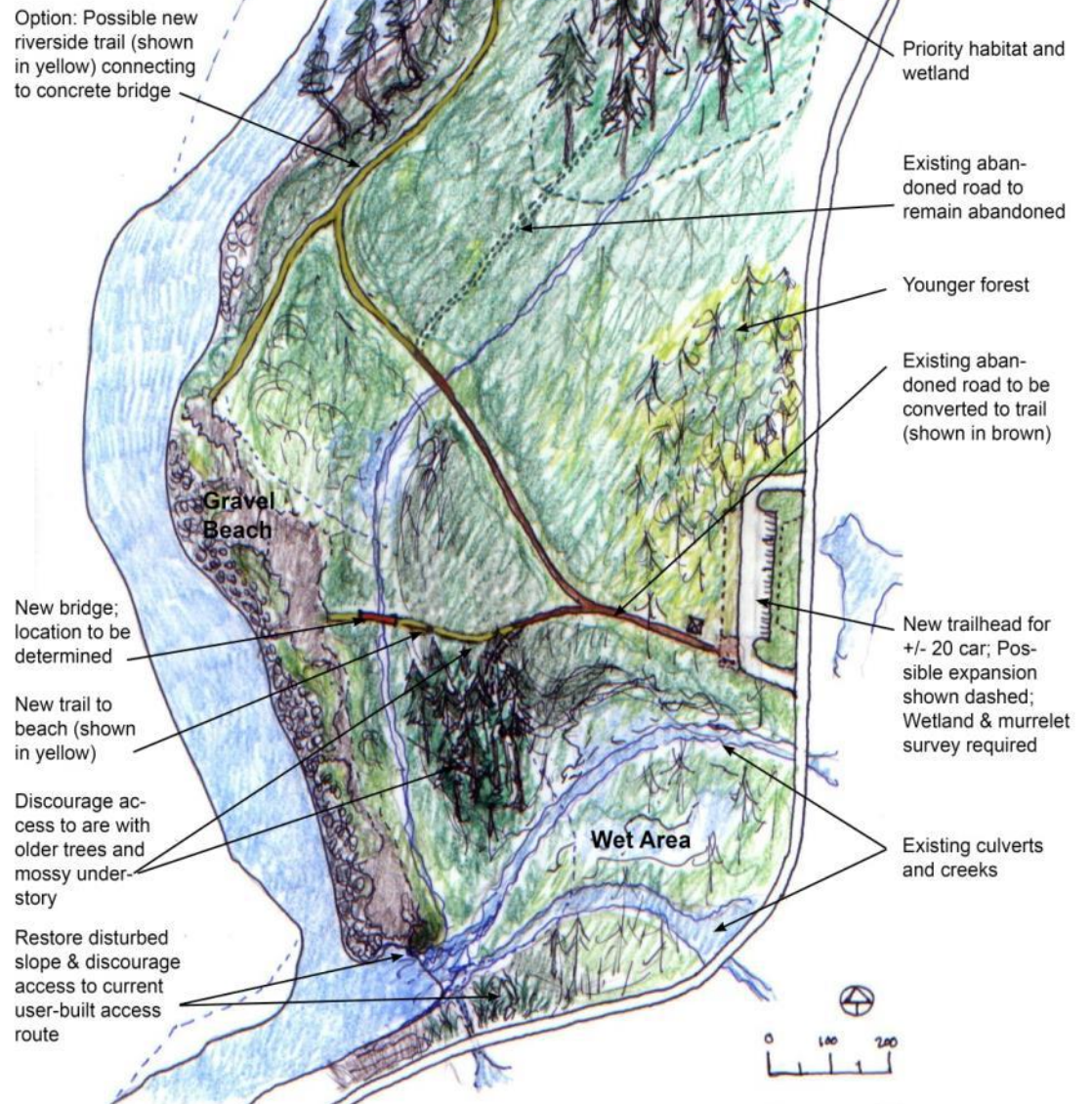
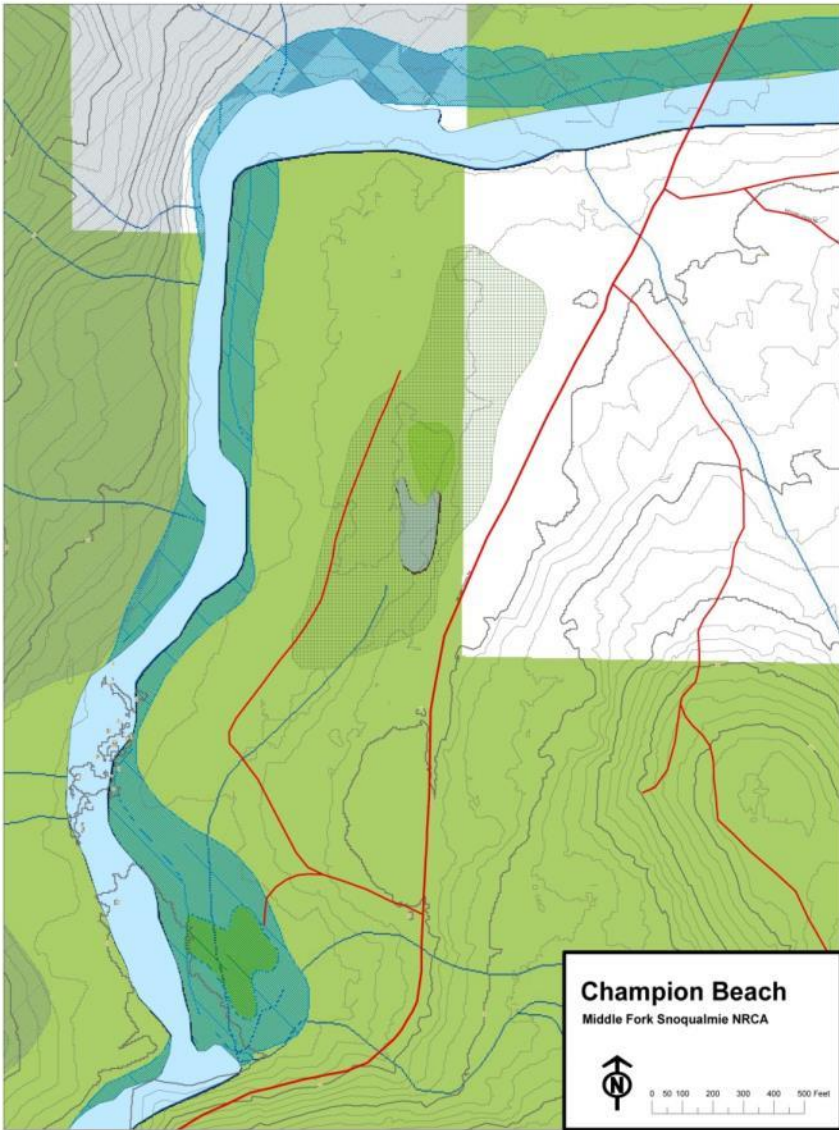
High Level Trail Concept & Key Deliverables

1. Long High Elevation Cross Country (XC) Loop
 2. Shorter Easier Low Elevation Winter Option
 3. Out & Back to Viewpoint
 4. Stacked Loop Options
 5. Advanced Tech Trails (Dry Hill Zone)
 6. Community and Adjacent Trail Connections
- A. Exit 27 Trailhead Connection
B. Tiger Mt Trail System Connection
C. North Bend Community Connection
D. Taylor Mt & Tiger Summit Connection
E. Snoqualmie Community Connection
F. Work with USFS to Preserve Exit 27 Trails





Middle Fork Valley



Draft Site Concept
Champion Beach
17 Oct 2013



conservation

culture



education



restoration



research



recreation



timber



volunteering

