

Teanaway Community Forest Advisory Committee

11 September 2014

Priority Streams

Legislative goals for the Community Forest (SB 5367)

- **Goal 1: Protect and enhance the water supply and protect the watershed**
- **Goal 2: Maintain working lands for forestry and domestic livestock grazing while protecting key watershed functions and aquatic habitat**
- **Goal 3: Maintain and expand recreational opportunities consistent with watershed protection**
- **Goal 4: Conserve and restore vital habitat for fish and wildlife**
- **Goal 5: Support a strong community partnership, consulting on land management with the Yakama Nation, residents, business owners, local governments, conservation groups and others**

DNR and WDFW must manage the Community Forest consistent with principles of Yakima Basin Integrated Plan



Legislative goals for the Community Forest (SB 5367)

○ Goal 1: Protect and enhance the water supply and protect the watershed

- Goal 2: Maintain working lands for forestry and domestic livestock grazing while protecting key watershed functions and aquatic habitat
- Goal 3: Maintain and expand recreational opportunities consistent with watershed protection

○ Goal 4: Conserve and restore vital habitat for fish and wildlife

- Goal 5: Support a strong community partnership, consulting on land management with the Yakama Nation, residents, business owners, local governments, conservation groups and others

DNR and WDFW must manage the Community Forest consistent with principles of Yakima Basin Integrated Plan



Stream Restoration Priorities

- **Federally listed: Steelhead and/or Bull Trout**
 - Currently Present
 - Production potential (number of fish produced)
- **Degree of degradation (existing condition)**
 - Rate of Incision – is degradation on-going?
 - likelihood of success – short and long term
- **Build success in tributaries before going to mainstem**



Indian creek

Steelhead on redd



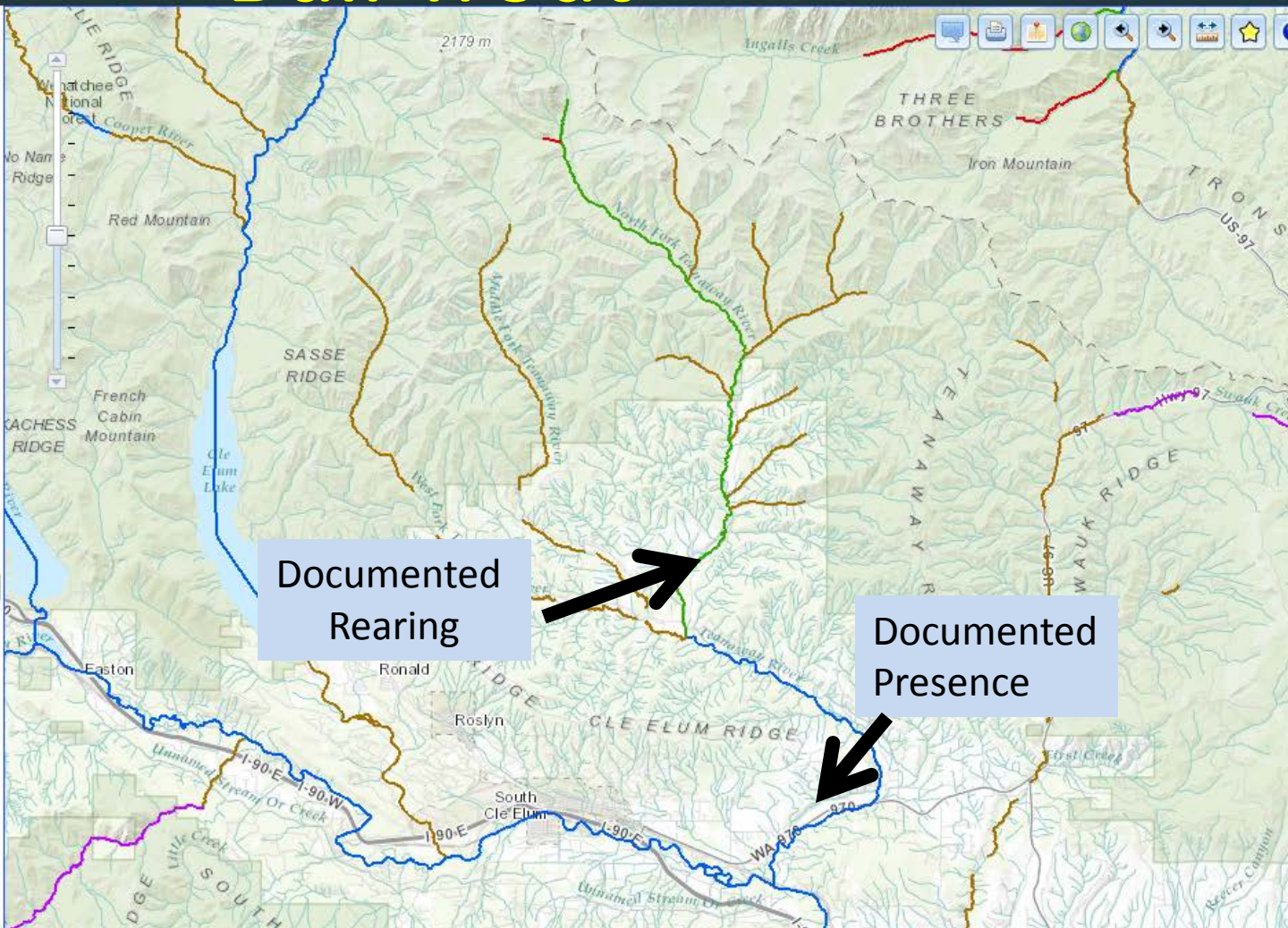
Bull Trout

Map Controls

Layers Legend Active (2) Tools

Fish Distribution

- Bull Trout
- Documented Presence
- Documented Spawning
- Documented Rearing
- Modeled Presence
- Presumed Presence
- Potential: Blocked
- Documented Historic Presence
- Transported Presence
- Transported Spawning
- Transported Rearing
- Documented-Artificial, Presence
- Documented-Artificial, Spawning
- Documented-Artificial, Rearing



Documented Rearing

Documented Presence

TEANAWAY COMMUNITY FOREST





Summer steelhead Distribution

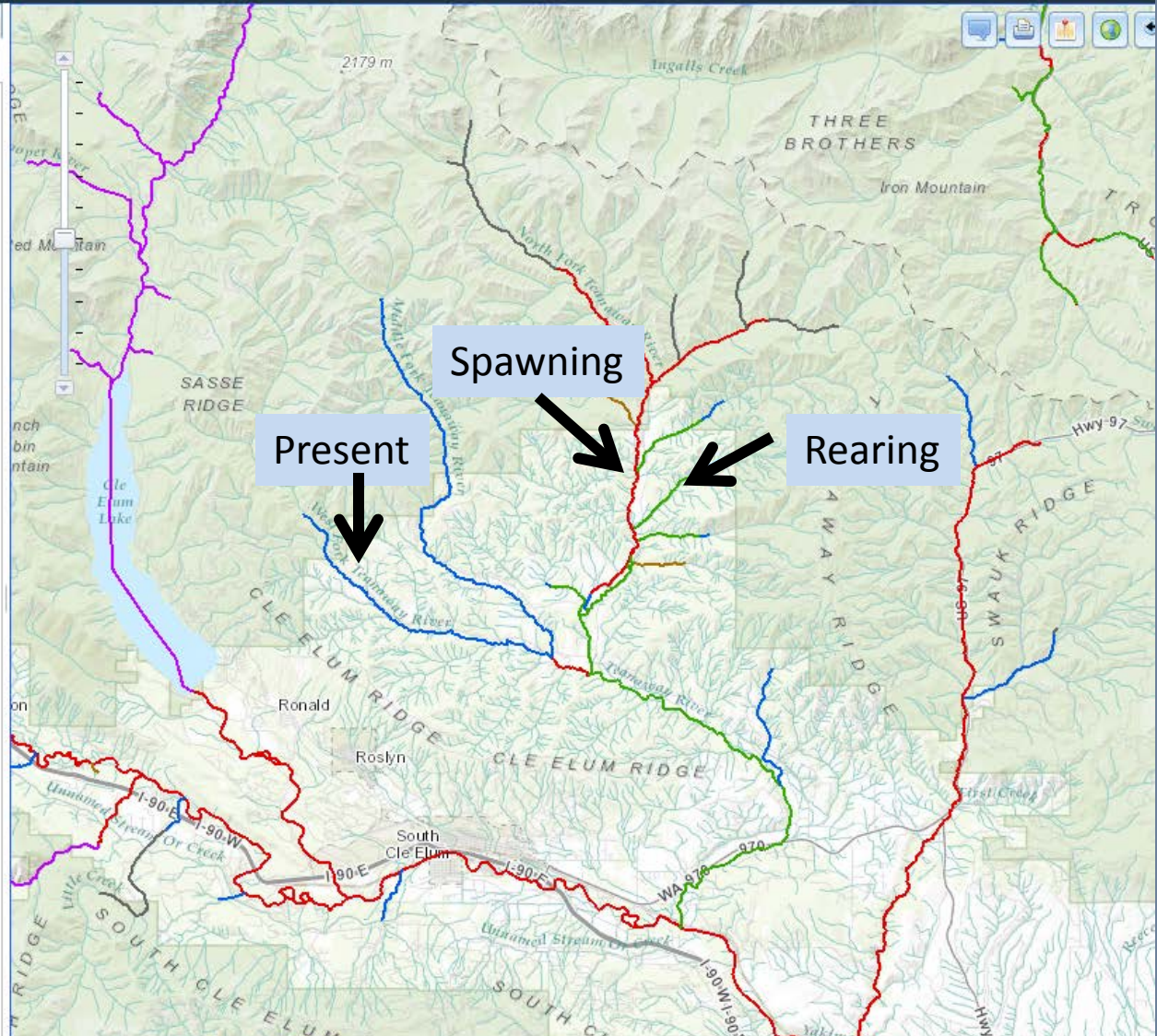
Map Controls

Layers Legend Active (2) Tools

Fish Distribution

Summer Steelhead

- Documented Presence
- Documented Spawning
- Documented Rearing
- Modeled Presence
- Presumed Presence
- Potential: Blocked
- Documented Historic Presence
- +— Transported Presence
- +— Transported Spawning
- +— Transported Rearing
- - - Documented-Artificial, Presence
- - - Documented-Artificial, Spawning
- - - Documented-Artificial, Rearing



TEANAWAY COMMUNITY FOREST



Washington Department of FISH and WILDLIFE



WASHINGTON STATE Natural Resources

High Priority Streams

1. Stafford Creek

- Bull trout (rearing juveniles)
- Steelhead



2. Indian Creek

- Steelhead
- High potential
- Road already realigned
- On-going project



High Priority Streams

3. Jungle Creek

- High biological payback
- Includes USFS land



4. Middle Fork Teanaway River (above Indian Camp)

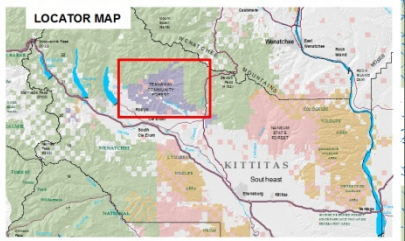
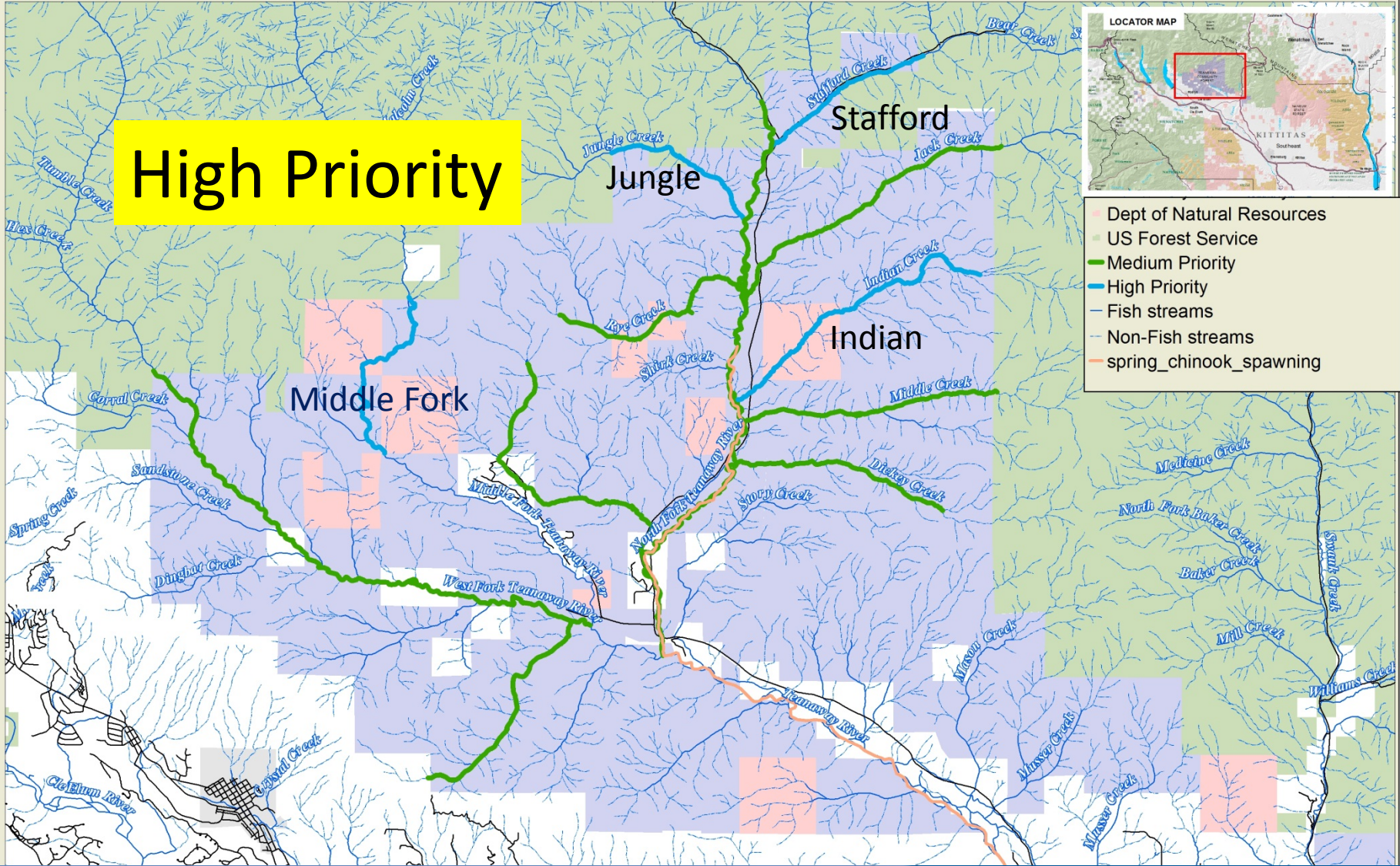
- High potential for restoration success

TEANAWAY COMMUNITY FOREST

High and Medium
Priority Streams

Scale: 1:30,000
Date: Sep 19, 2014
DRAFT MAP

High Priority



- Dept of Natural Resources
- US Forest Service
- Medium Priority
- High Priority
- Fish streams
- Non-Fish streams
- spring_chinook_spawning

TEANAWAY COMMUNITY FOREST



Washington
Department of
FISH and
WILDLIFE



WASHINGTON STATE
Natural Resources

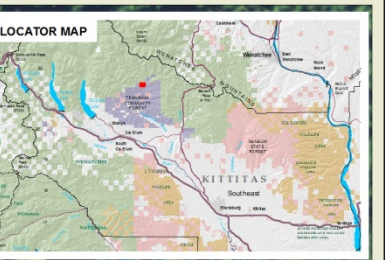
TEANAWAY COMMUNITY FOREST

Jungle Creek Focus



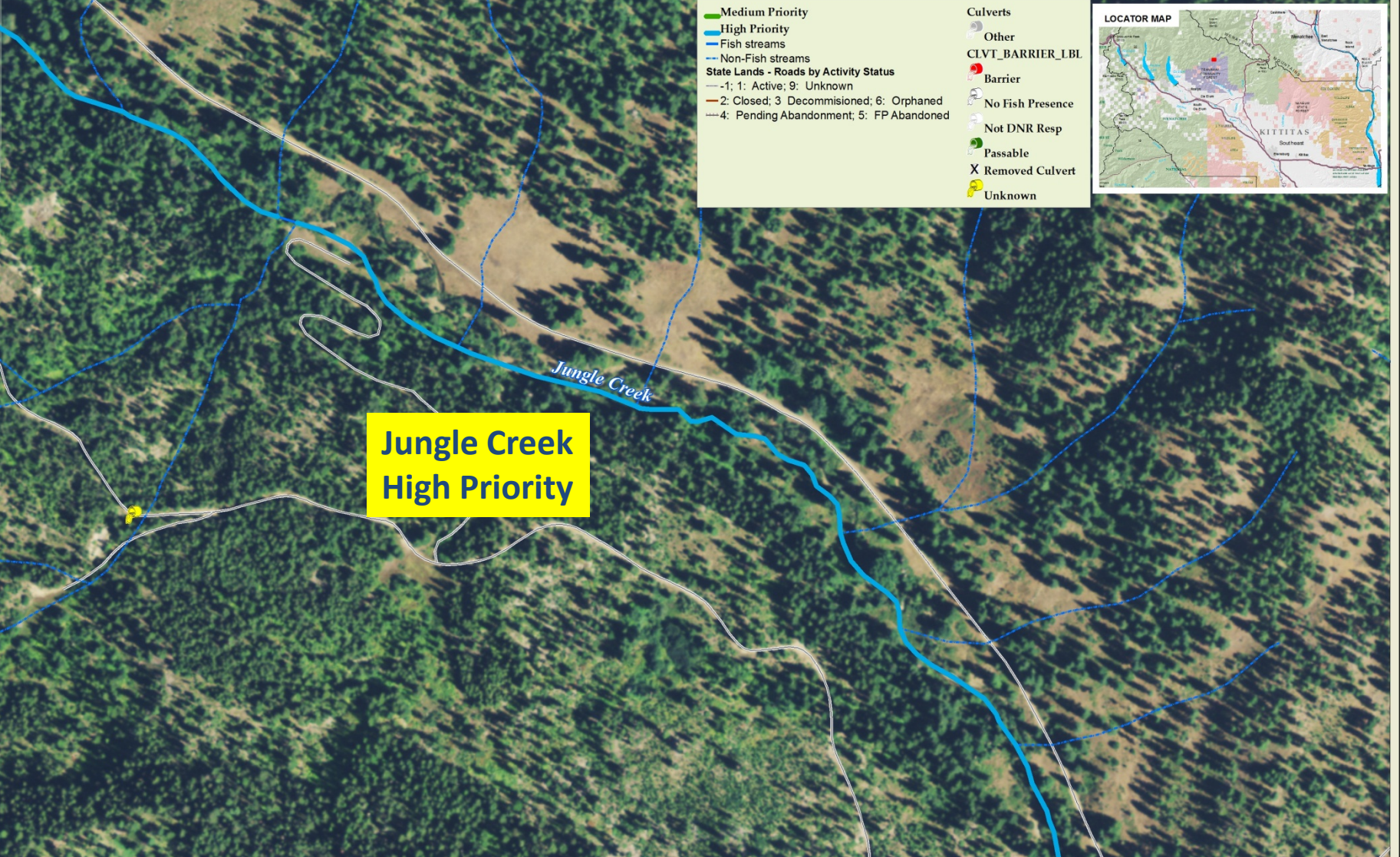
0 100 200 300 400 Feet

1:1,250



DRAFT MAP

LOCATOR MAP



**Jungle Creek
High Priority**

- Medium Priority
- High Priority
- Fish streams
- Non-Fish streams
- State Lands - Roads by Activity Status
 - 1; 1: Active; 9: Unknown
 - 2: Closed; 3 Decommissioned; 6: Orphaned
 - 4: Pending Abandonment; 5: FP Abandoned
- Culverts
 - Other
 - CLVT_BARRIER_LBL
 - Barrier
 - No Fish Presence
 - Not DNR Resp
 - Passable
 - X Removed Culvert
 - Unknown

Medium Priority Streams

- Lick Creek
- Jack Creek
- Dickey Creek
- Middle Creek
- Rye Creek
- West Fork Teanaway River
- North Fork Teanaway River
- Carlson Creek

TEANAWAY COMMUNITY FOREST

High and Medium
Priority Streams

Scale: 1:30,000
Date: Sep 19, 2014
DRAFT MAP

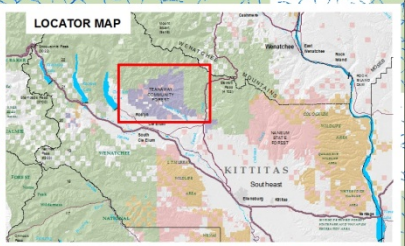
Medium Priority

Rye

Jack

Lick

Middle & Dickey



- Dept of Natural Resources
- US Forest Service
- Medium Priority
- High Priority
- Fish streams
- Non-Fish streams
- spring_chinook_spawning

TEANAWAY COMMUNITY FOREST



Washington
Department of
FISH and
WILDLIFE

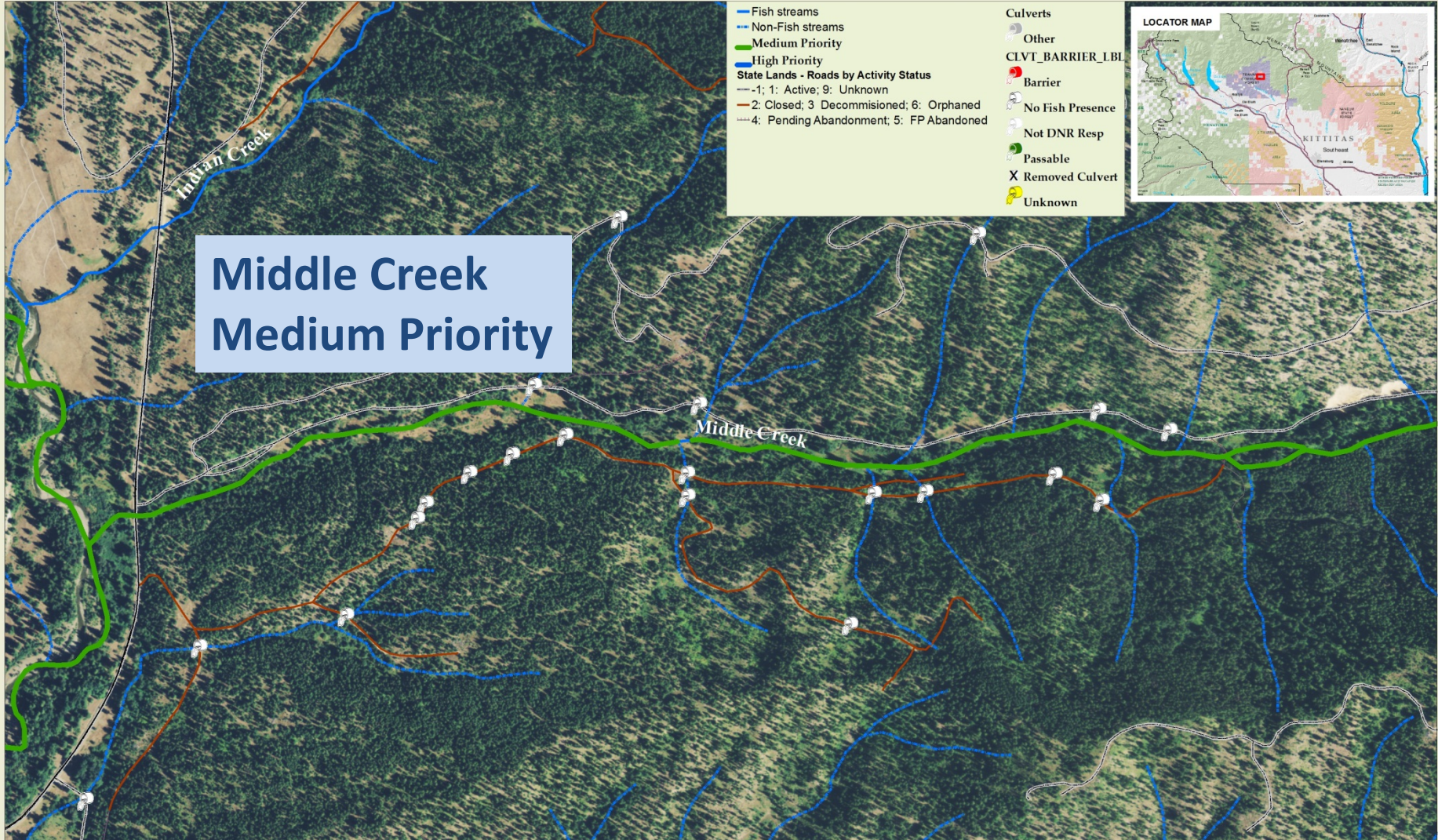


WASHINGTON STATE
Natural Resources

TEANAWAY COMMUNITY FOREST

Middle and Dickey Creeks

1:3,000
 Sep 10, 2014
 DRAFT MAP



TEANAWAY COMMUNITY FOREST



Stream Priority & Crosswalk

- Roads & Streams
- Grazing & Streams
- Trails & Streams
- Campgrounds & Streams
- ??? & Streams