



Marbled Murrelet Long-Term Conservation Strategy *and the Sustainable Harvest Calculation* Public Meetings Report

A report to the Board of Natural Resources

presented by

Kristen Ohlson-Kiehn, Jennifer Davis and Mike Buffo

February 7, 2017



Public Meetings

January 10: Sedro Woolley – 24 attendees

January 12: Seattle – 47 attendees

January 17: Port Angeles – 40 attendees

January 19: Cathlamet – 12 attendees



Public Meetings

- Open house format
- Staff presentations
 - Introduction to state trust lands
 - Marbled murrelet
 - Sustainable harvest
- Poster session and one-on-one Q &A with staff



Webinars

January 24: Marbled murrelet – 35 attendees

January 26: Sustainable harvest – 18 attendees



Webinars

- Staff presentations
- Informal Q &A



TWO DRAFT ENVIRONMENTAL IMPACT STATEMENTS (DEISs)

Marbled Murrelet Long-Term Conservation Strategy

Sustainable Harvest Calculation





WASHINGTON STATE DEPARTMENT OF
NATURAL RESOURCES

_____ and _____



U.S. Fish & Wildlife Service



Department of Natural Resources



Manages & Protects

Trust Lands

- Forests ←
- Agriculture

Aquatic Lands

Conservation Lands









- Natural Area Preserves
- Natural Resources Conservation Areas



State Trust Lands

Granted Trust Lands

Benefits the state's public schools, universities and other institutions

-  Common School, Indemnity & Escheat
-  Scientific School
-  University Original
-  University Transferred
-  Normal School
-  Agricultural School
-  Capitol Grant
-  Charitable, Educational, Penal & Reformatory Institutions


State Forest Trust Lands

Benefits schools, counties and local services

-  State Forest Transfer Trust
-  State Forest Purchased Trust

Other

Benefits Community Colleges and others

-  Community College Reserve and other DNR-managed lands



Trust Mandate

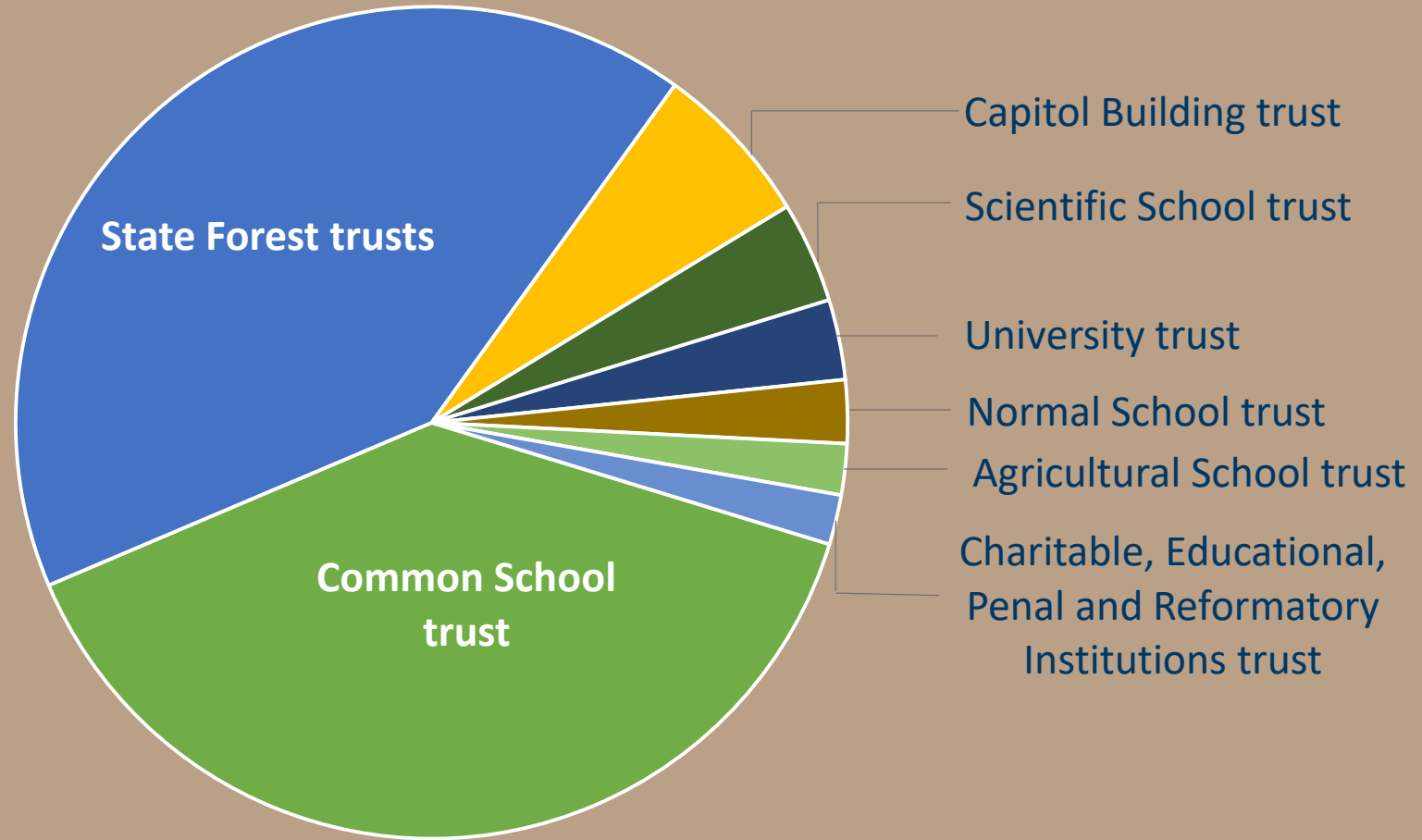
As manager of state trust lands, DNR has legal fiduciary responsibilities under the State Constitution to:

- Generate revenue and other benefits for each trust, in perpetuity
- Preserve the corpus of the trust
- Exercise reasonable care and skill
- Act prudently to reduce the risk of loss for the trusts
- Maintain undivided loyalty to beneficiaries
- Act impartially with respect to current and future beneficiaries



Proportional Acreage of Major Trusts on Westside

**1.4 Million Acres of
Total Forested Trust
Lands**



Marbled Murrelet Long-Term Conservation Strategy

Draft Environmental Impact Statement



Jennifer Davis, DNR
Environmental Planner

Mark Ostwald, USFWS
Fish and Wildlife Biologist




WASHINGTON STATE DEPARTMENT OF
NATURAL RESOURCES

Draft– Subject to Change



N A T U R A L R E S O U R C E S

**FINAL
HABITAT
CONSERVATION
PLAN**
September 1997

 WASHINGTON STATE DEPARTMENT OF
Natural Resources
Jennifer M. Belcher - Commissioner of Public Lands



WASHINGTON STATE DEPARTMENT OF
NATURAL RESOURCES

Draft- Subject to Change

Interim Strategy

- Temporary
- Complicated
- Uncertain



Long-Term Strategy

- Certain
- Intentional
- Predictable



USFWS

Incidental Take Permit Issuance Criteria

- The taking will be incidental
- Minimize and mitigate impacts of taking to maximum extent practicable
- Adequate funding to implement murrelet strategy
- The taking will not appreciably reduce the survival and recovery of the species in the wild
- Other measures the USFWS may require



Marbled Murrelet

Summary of Biology, Distribution, and Status



Photos: PNW Research Lab

- A small marine bird that spends most of its life at sea, but nests in mature and old-growth forests.
- Feeds primarily on small fishes such as herring, sand lance, and anchovies, but will also feed on marine invertebrates such as krill.

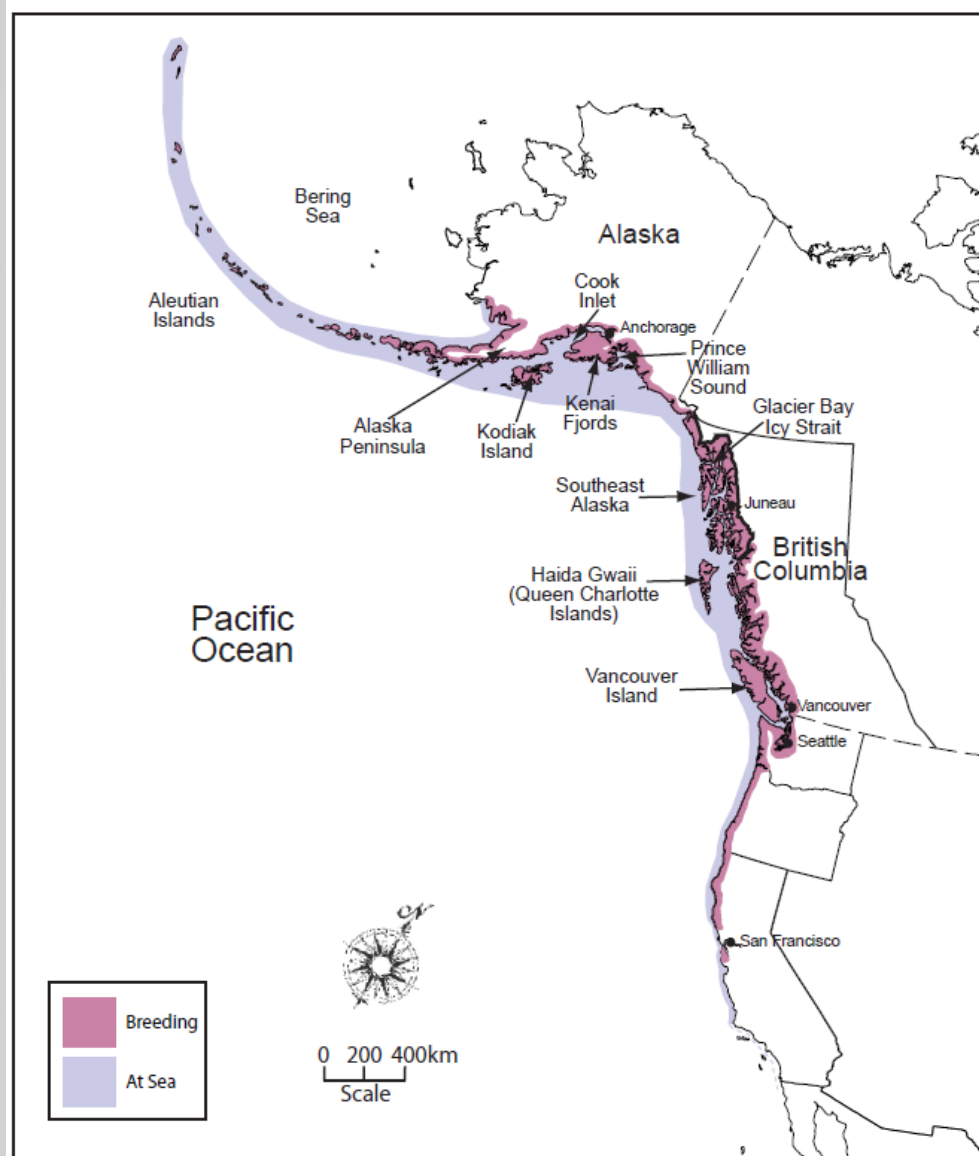


Range and Status of the Marbled Murrelet

Extends from Alaska to California.

Listed as a **threatened species** under the Endangered Species Act in 1992 in **Washington, Oregon and California.**

Closely associated with coastal forests and nearshore marine waters during the summer nesting season.



Nesting Biology

Marbled murrelets do not build a nest, but lay a single egg in moss or debris on a tree branch or other natural platform.



Photos from USFS Pacific Northwest Research Station



Threats

- Ongoing and historical loss of nesting habitat.
- Predation on murrelet eggs and chicks in their nests.
- Changes in marine conditions, affecting the abundance, distribution, and quality of murrelet prey species.
- Mortality in the marine environment (predation, gill-nets, oil-spills).



Long-Term Strategy



WASHINGTON STATE DEPARTMENT OF
NATURAL RESOURCES

Draft– Subject to Change

Objectives of a Long-Term Strategy



Generate revenue and other benefits



Minimize and mitigate take



Promote sustainable management

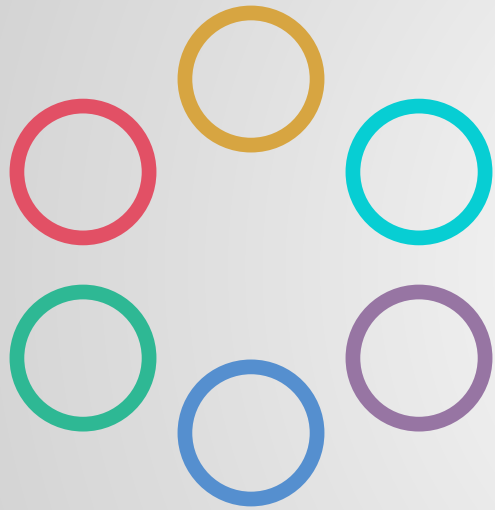


Provide flexibility



Feasible, practical, cost effective





Six Alternatives



An additional **10-151** thousand
acres

would be protected



WASHINGTON STATE DEPARTMENT OF
NATURAL RESOURCES

Draft– Subject to Change

	A	B	C	D	E	F
Occupied sites	✓	✓	✓	✓	✓	✓
Occupied site buffers	✓		✓	✓	✓	✓
Habitat identified under interim strategy	✓					
MM management areas						✓
Emphasis areas			✓		✓	
Special habitat areas			✓	✓	✓	
High quality habitat			✓		✓	
Low quality northern spotted owl habitat						✓



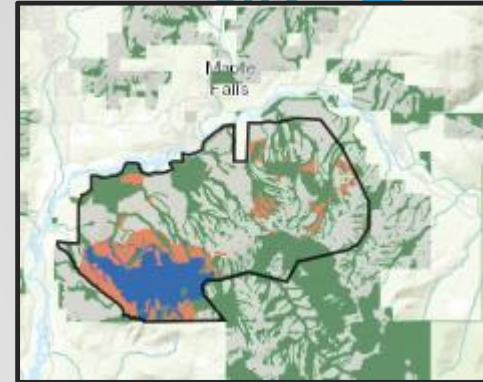
alt **A**



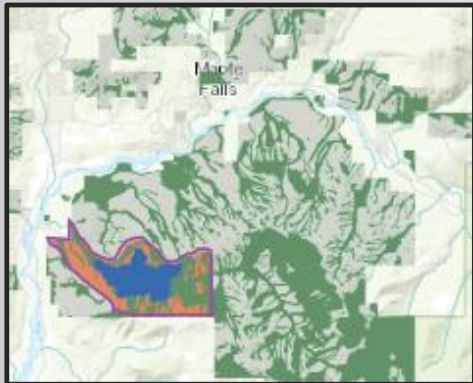
alt **B**



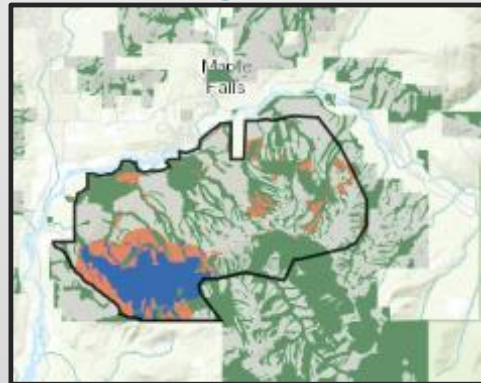
alt **C**



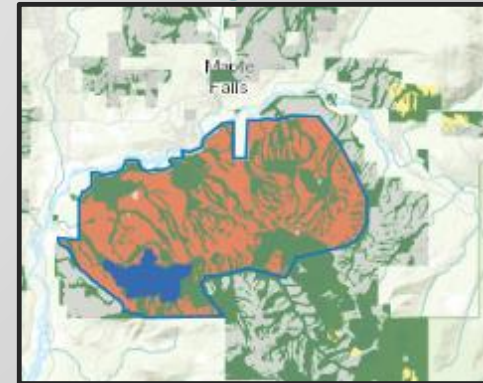
alt **D**




alt **E**



alt **F**





**How do they
stack up?**

Affected Environment

Earth (Geology and Soils)

Climate

Vegetation

Aquatic Resources

Wildlife

Marbled Murrelet

Recreation

Forest Roads

Public services and
utilities

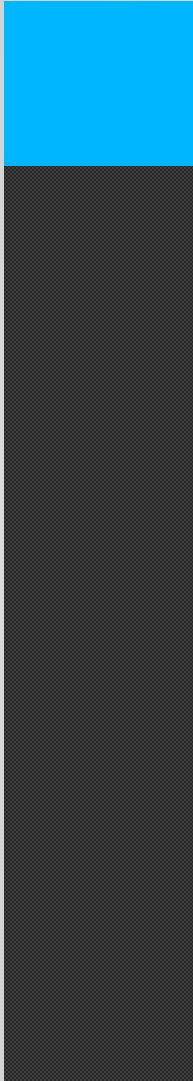
Environmental justice

Socioeconomics

Cultural resources



Acres of Conservation



Alt. F

Alt E

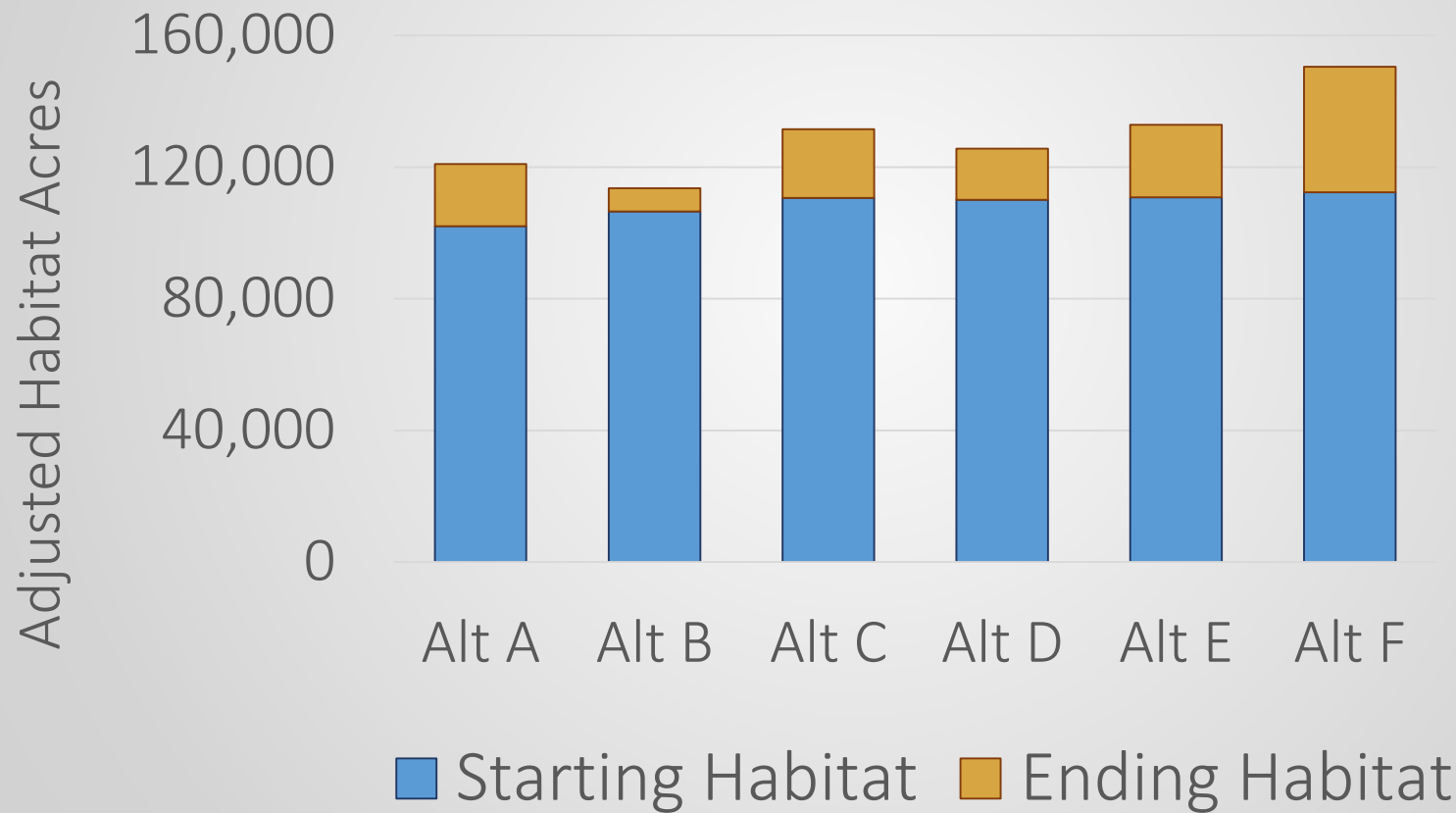
Alt C

Alt D

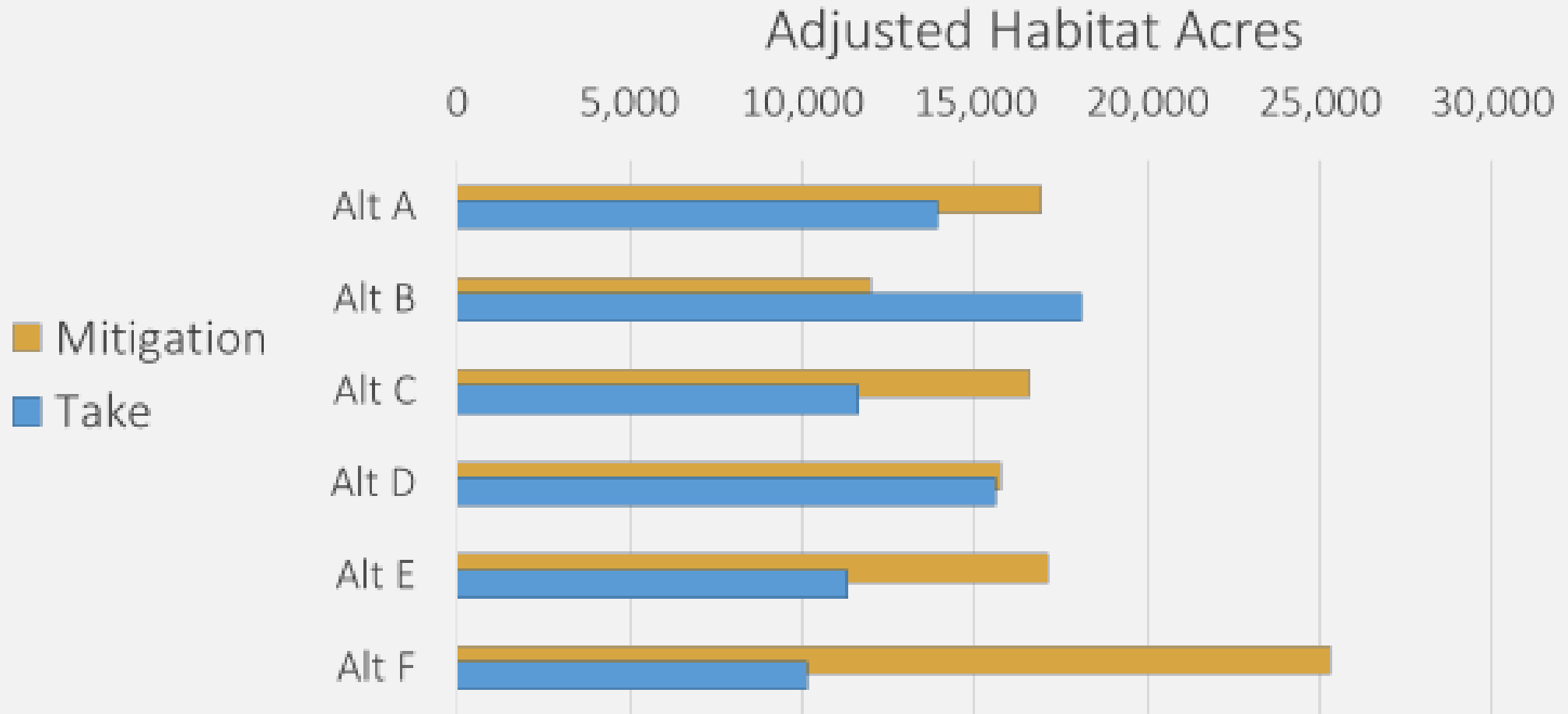
Alt. B (-)



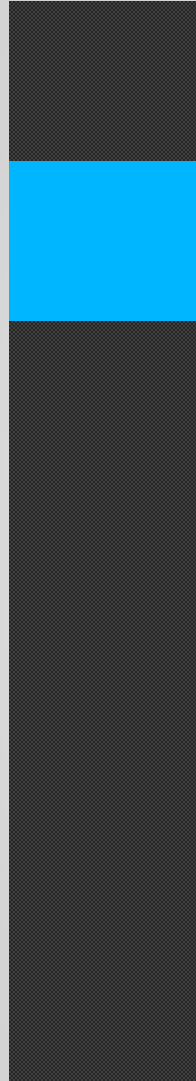
Habitat Growth



Take and Mitigation



Estimated Revenue




Alt B (+)

Alt C

Alt D (-)

Alt E

Alt F



What's
next?

NEPA/SEPA Joint EIS Process



Approval Process



Board selects strategy and DNR submits application to USFWS



USFWS completes biological opinion, findings, record of decision



Board decides whether to adopt conservation strategy



Alternatives for Establishment of a

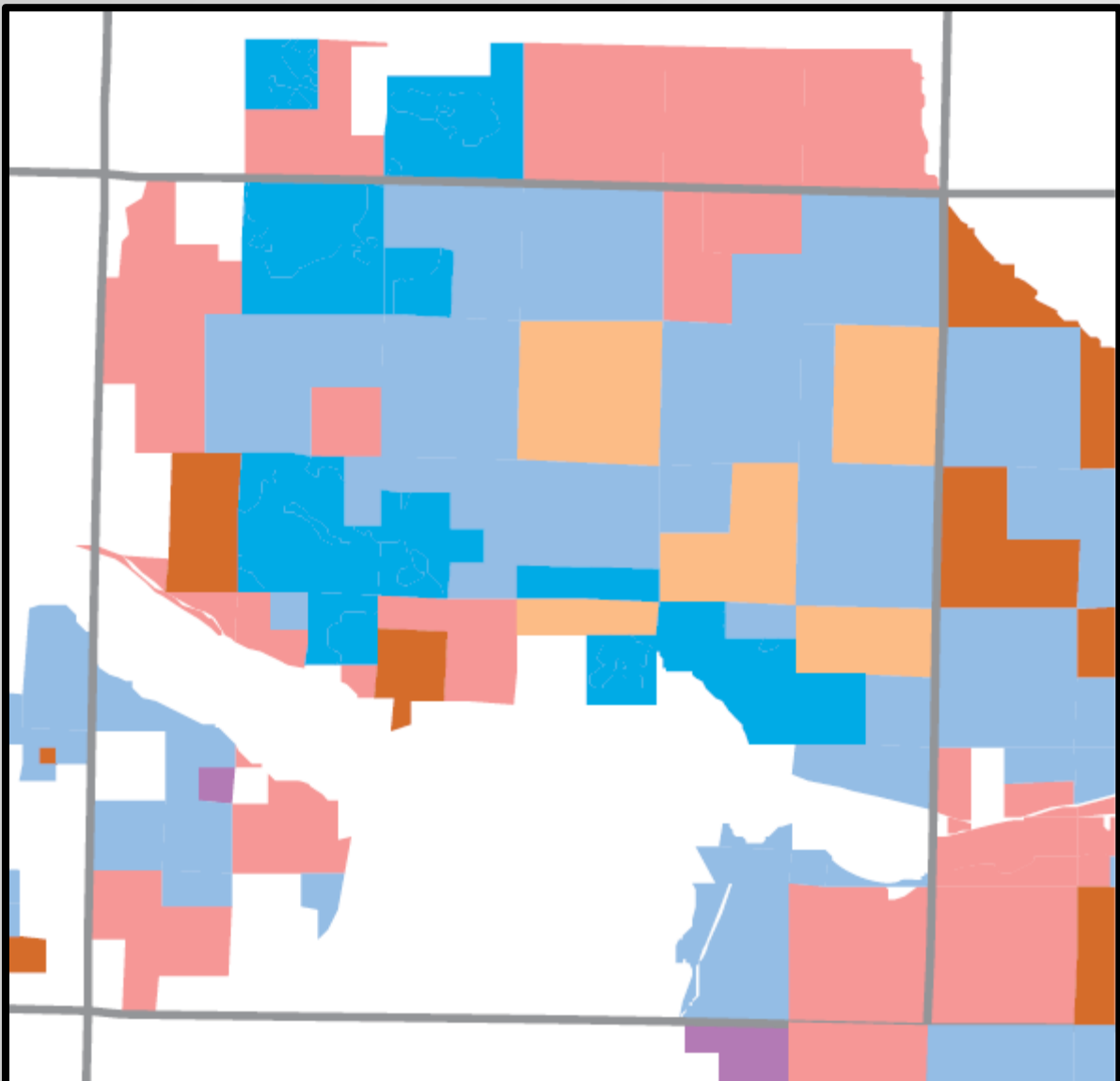
Sustainable Harvest Level

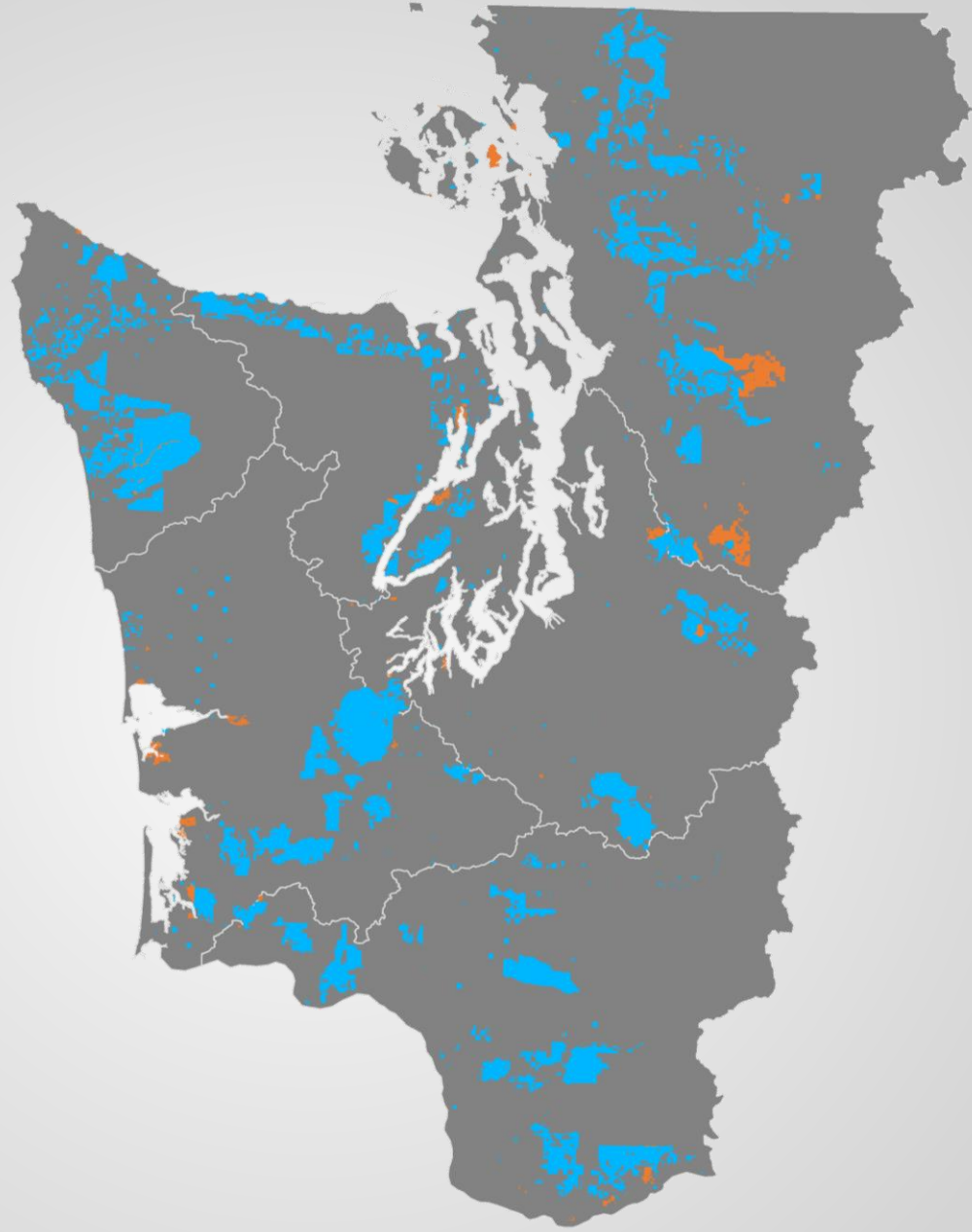
for Forested State Trust Lands in Western Washington



Mike Buffo

Environmental Planner, DNR





- Law
- Habitat Conservation Plan
- Policy for Sustainable Forests



- Law
- Habitat Conservation Plan
- Policy for Sustainable Forests

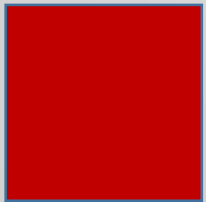
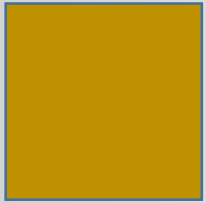


B o a r d o f N a t u r a l
R e s o u r c e s



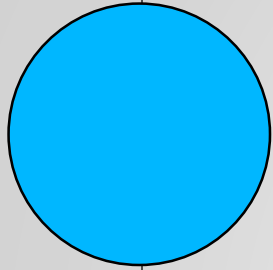
SEPA



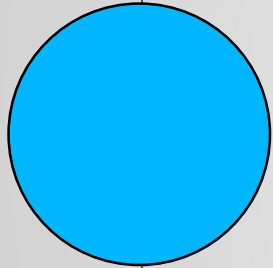


Alternatives

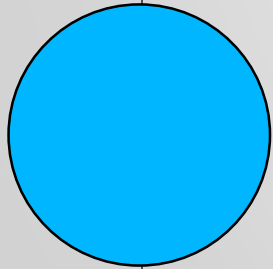




Marbled Murrelet Conservation



Arrearage Harvest



Riparian Thinning

Marbled Murrelet



6x

- A
- B
- C
- D
- E
- F



6x

- A
- B
- C
- D
- E
- F



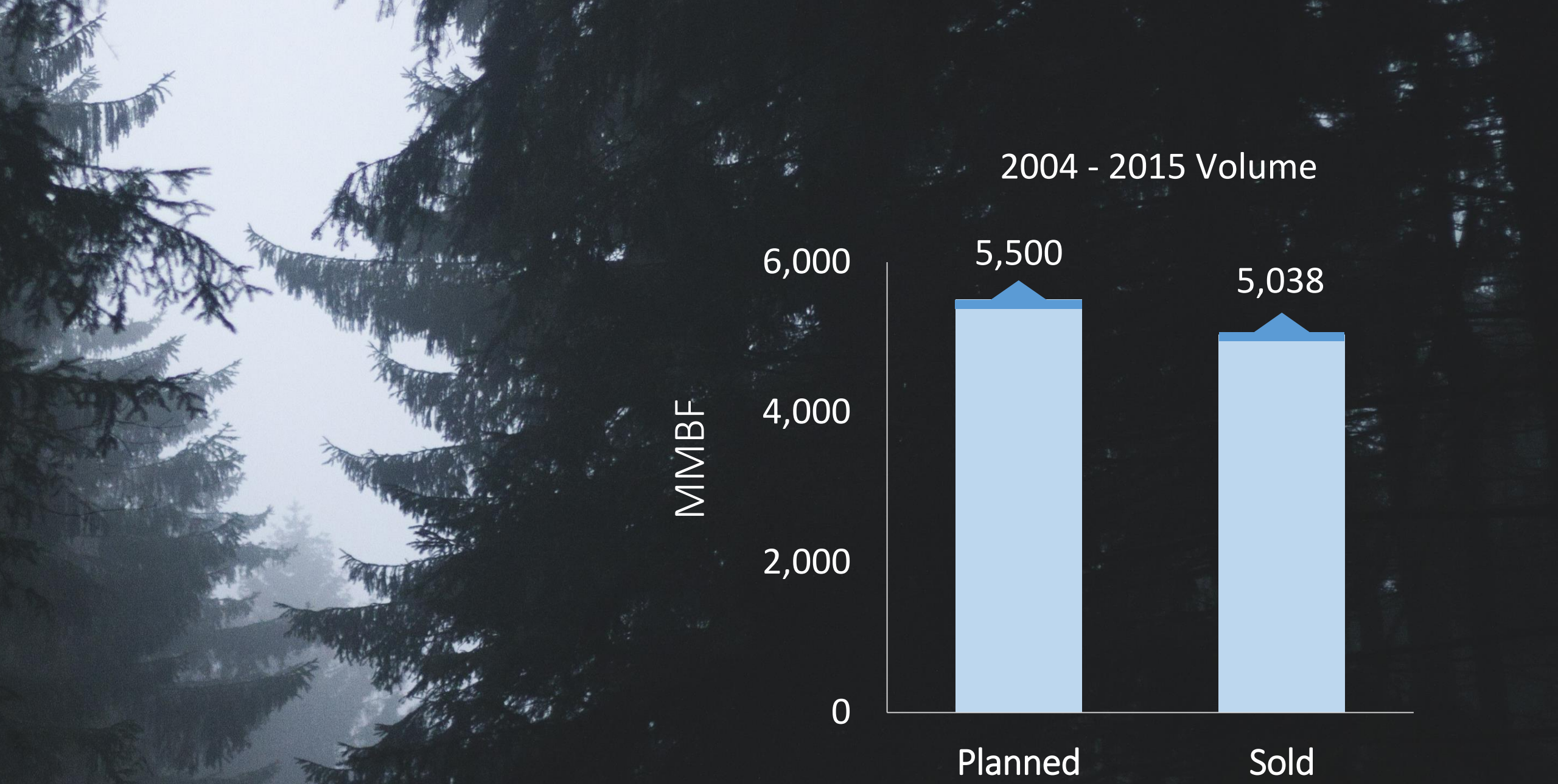
Arrearage



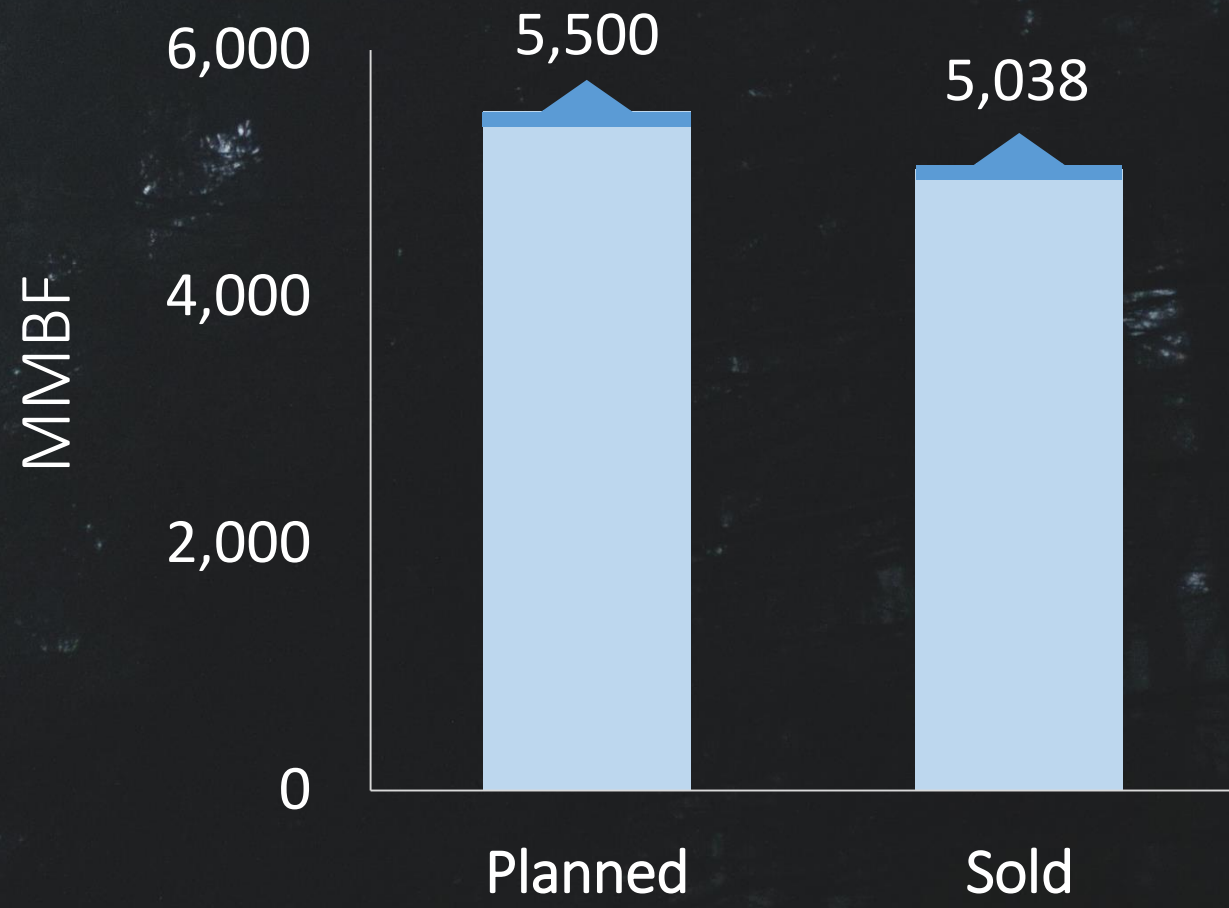
**Volume planned
— Volume sold**

Arrearage

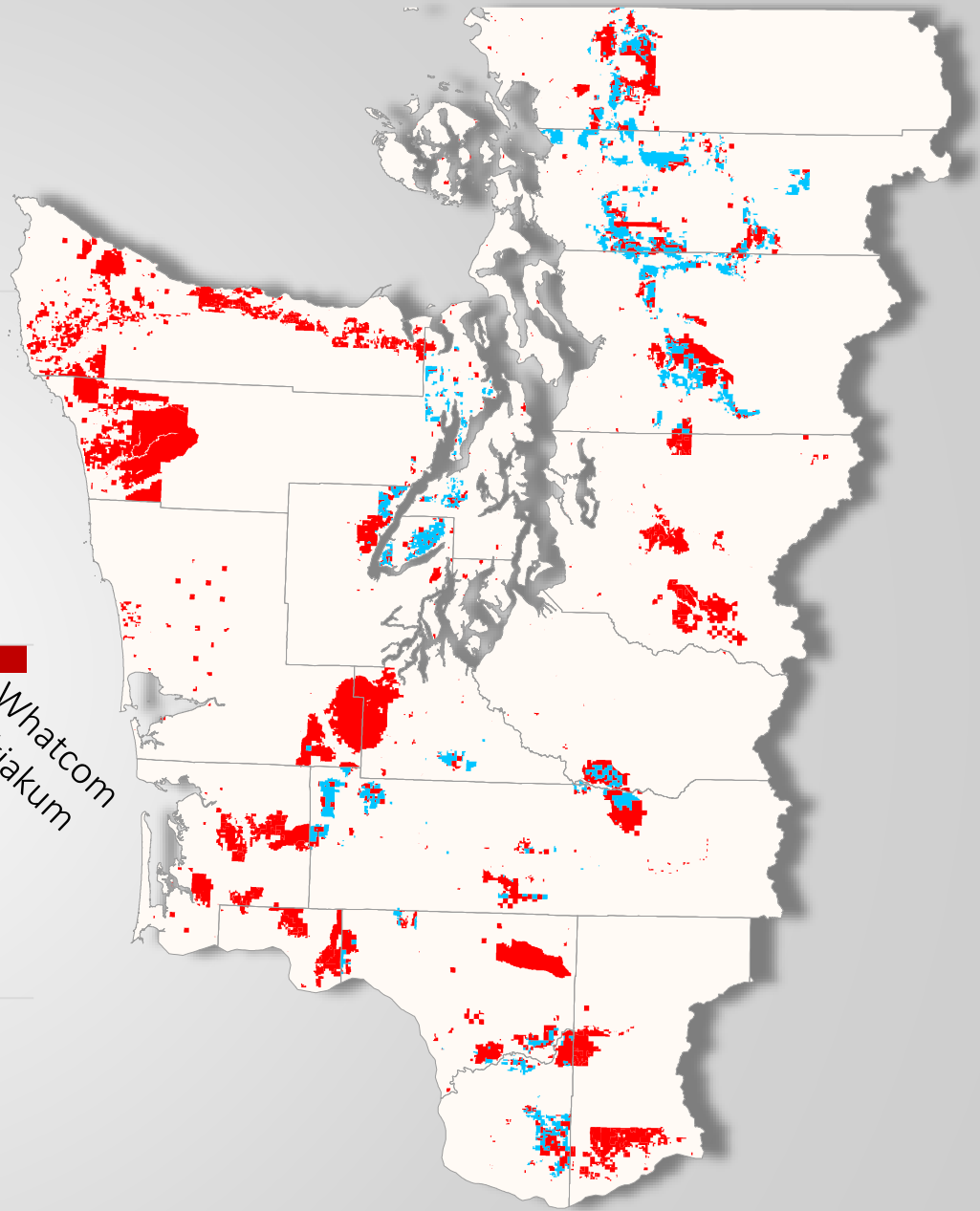
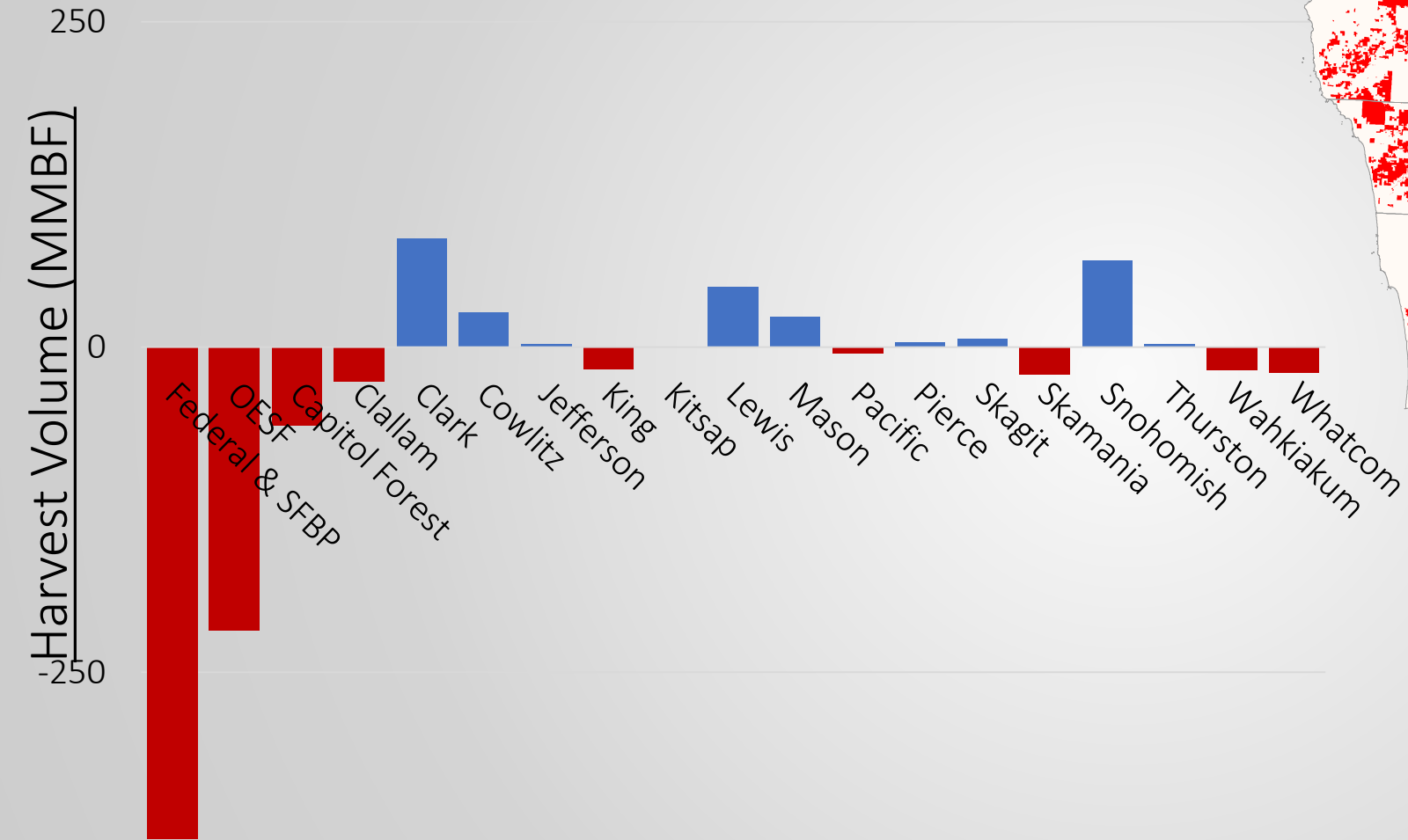




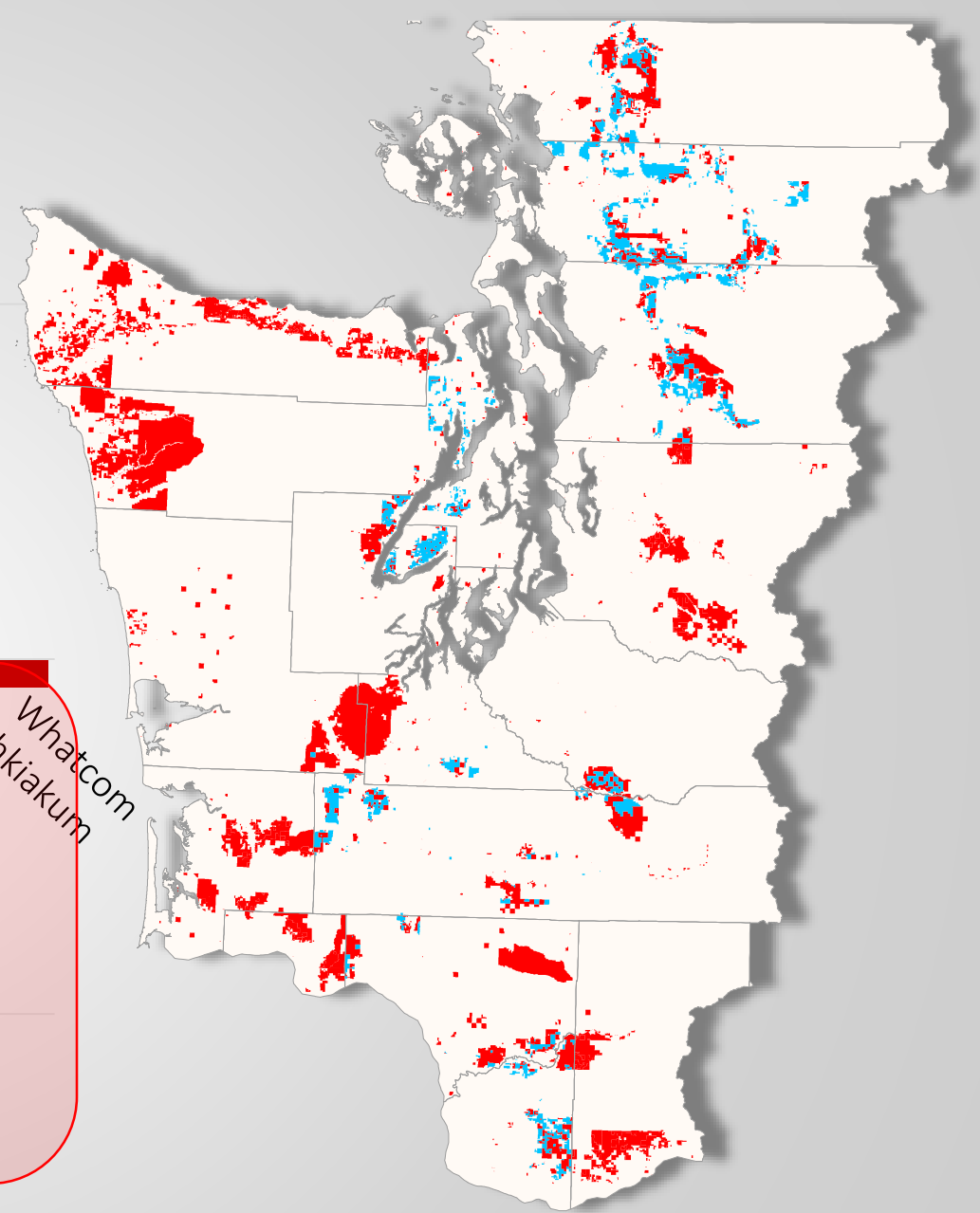
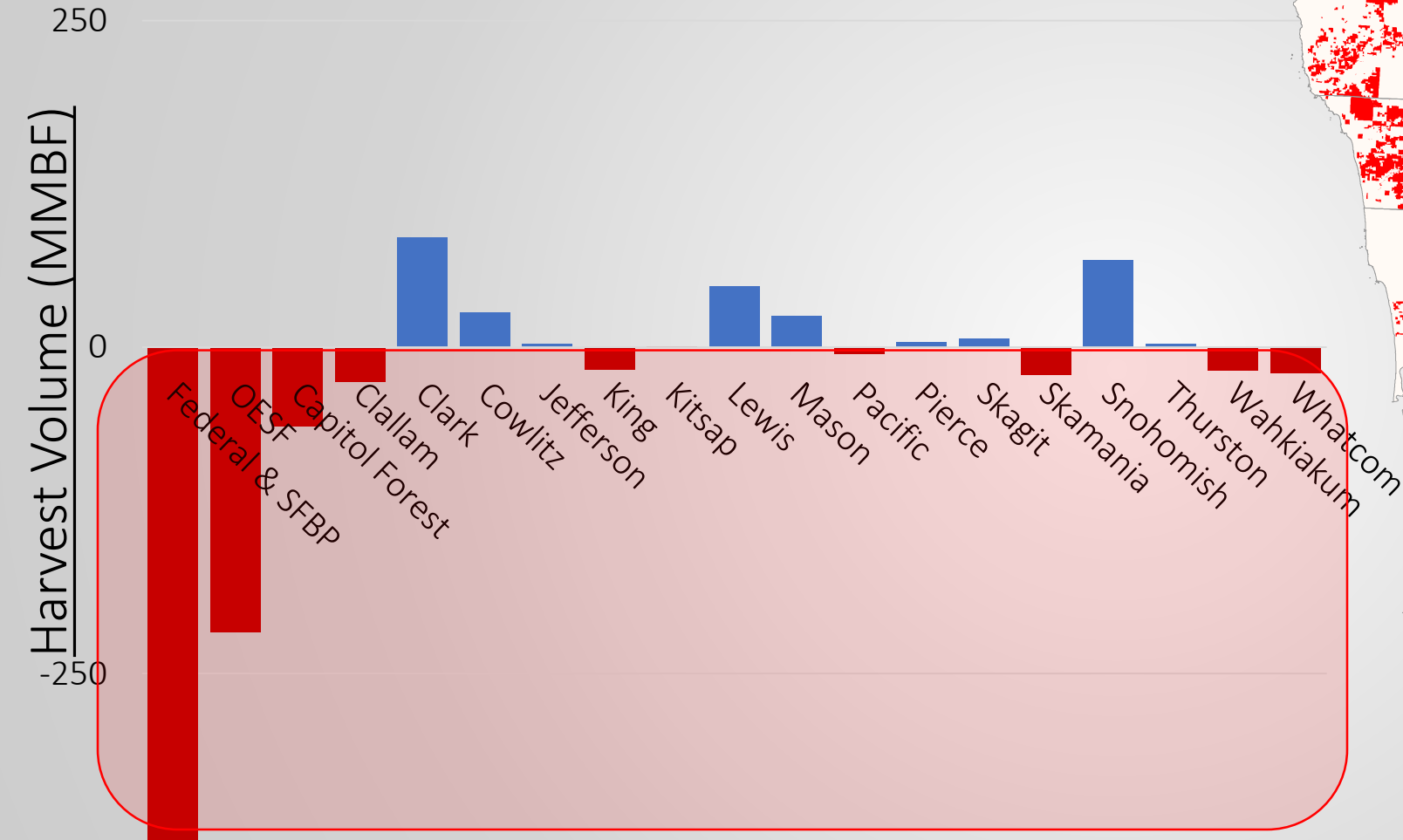
2004 - 2015 Volume



Sustainable Harvest Units



Sustainable Harvest Units



4x

- 702 mmbf / 5 years
- 462 mmbf / 10 years
- 462 mmbf / 1 year
- Rolled into the inventory

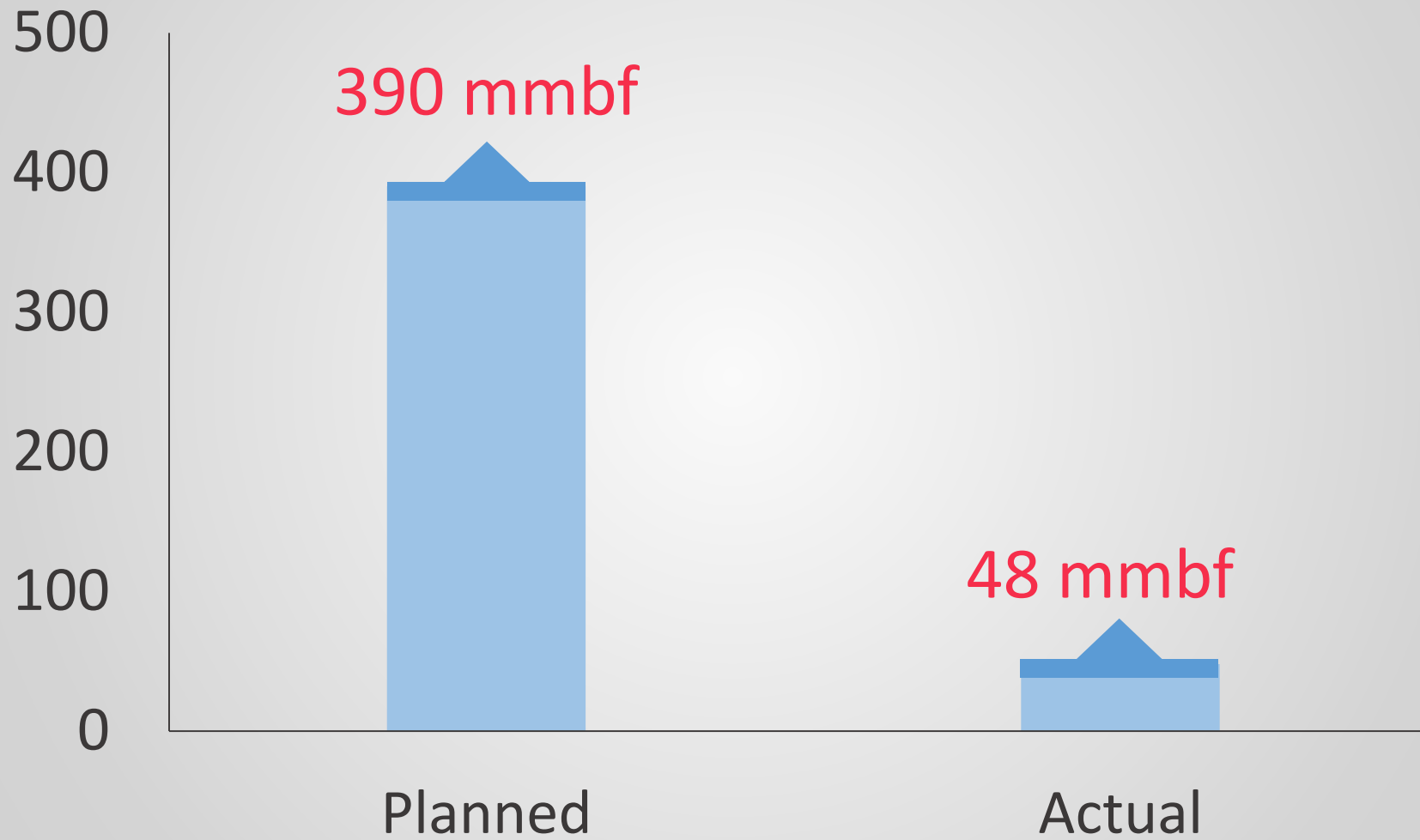




Riparian Thinning



2005 – 2014 Riparian Thinning



2x

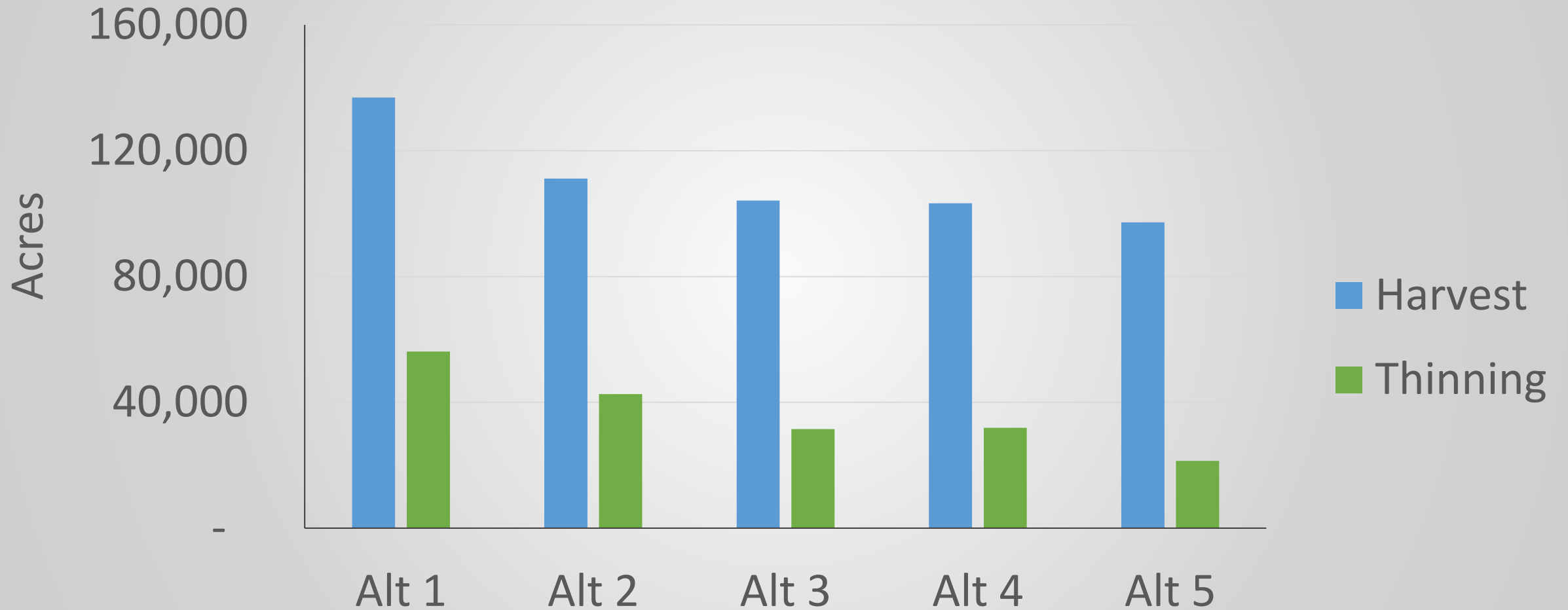
- 10% of riparian area
- 1% of upland harvests



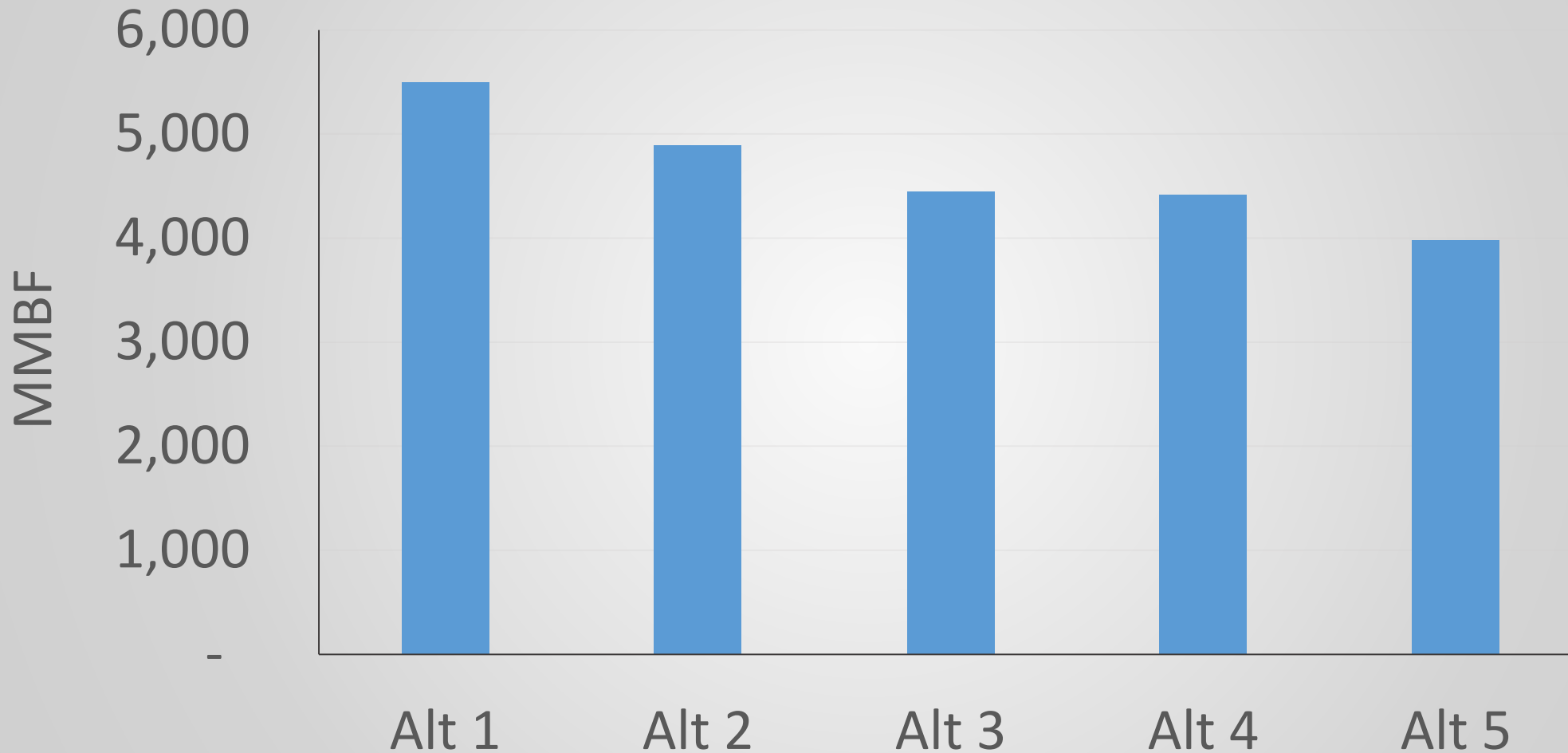
	alt 1	alt 2	alt 3	alt 4	alt 5
Murrelet	A	B	D	E	F
Arrearage	Rolled in	702 MMBF / 5 years	462 MMBF / 10 years	462 MMBF / 1 year	Rolled in
Riparian	Up to 10% of riparian area	Up to 10% of riparian area	Up to 1% of upland harvest area	Up to 1% of upland harvest area	Up to 1% of upland harvest area



Acres (2015 - 2024)



Volume (2015 - 2024)



Affected Environment

Earth (Geology and Soils)

Climate

Vegetation

Aquatic Resources

Wildlife and Biodiversity

Marbled Murrelet



Effects

- Existing laws and policies mitigate impacts





What's next?



SEPA EIS Process

Scoping

Public comments, scoping summary



Draft EIS

Public comment



Final EIS

Comment summary with responses





Approval Process

Board adopts sustainable harvest level



DNR implements sustainable harvest level



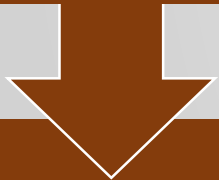


Approval Process *continued...*

USFWS completes record of decision for murrelet strategy



Board decides whether to adopt murrelet strategy



Board adopts revised sustainable harvest level, if necessary



Find out more
by visiting
dnr.wa.gov/shc
dnr.wa.gov/mmltcs

DEIS
Maps
Appendices
Board Presentations

Submit comments

By 5 pm, March
9, 2017

By email to: sepacenter@dnr.wa.gov

By mail to:

SEPA Center

P.O. Box 47015

Olympia, WA 98504

Include the SEPA file number:

12-042001 for marbled murrelet long-term
conservation

15-012901 for sustainable harvest

Questions and Answers at Information Stations

