



HILARY S. FRANZ
 COMMISSIONER OF PUBLIC LANDS

STATE TRUST LANDS

State Trust Lands in Washington are managed by the Department of Natural Resources, and they come with specific legal, fiduciary responsibilities associated with them. DNR manages forested trust lands to generate revenue for beneficiaries – such as schools, counties, and other public services – as well as to meet objectives identified in the Habitat Conservation Plan.



CONTACT

Jay Guthrie
 Acting Region Manager
 Northwest Region
 360-854-2802
 jay.guthrie@dnr.wa.gov

Middle May Timber Sale



REITER FOOTHILLS STATE FOREST

The Middle May timber sale is located within the 10,000-acre Reiter Foothills State Forest in Snohomish County.

The Reiter Foothills Forest is state trust land managed by the Department of Natural Resources (DNR) for long-term timber production and specific habitat objectives.

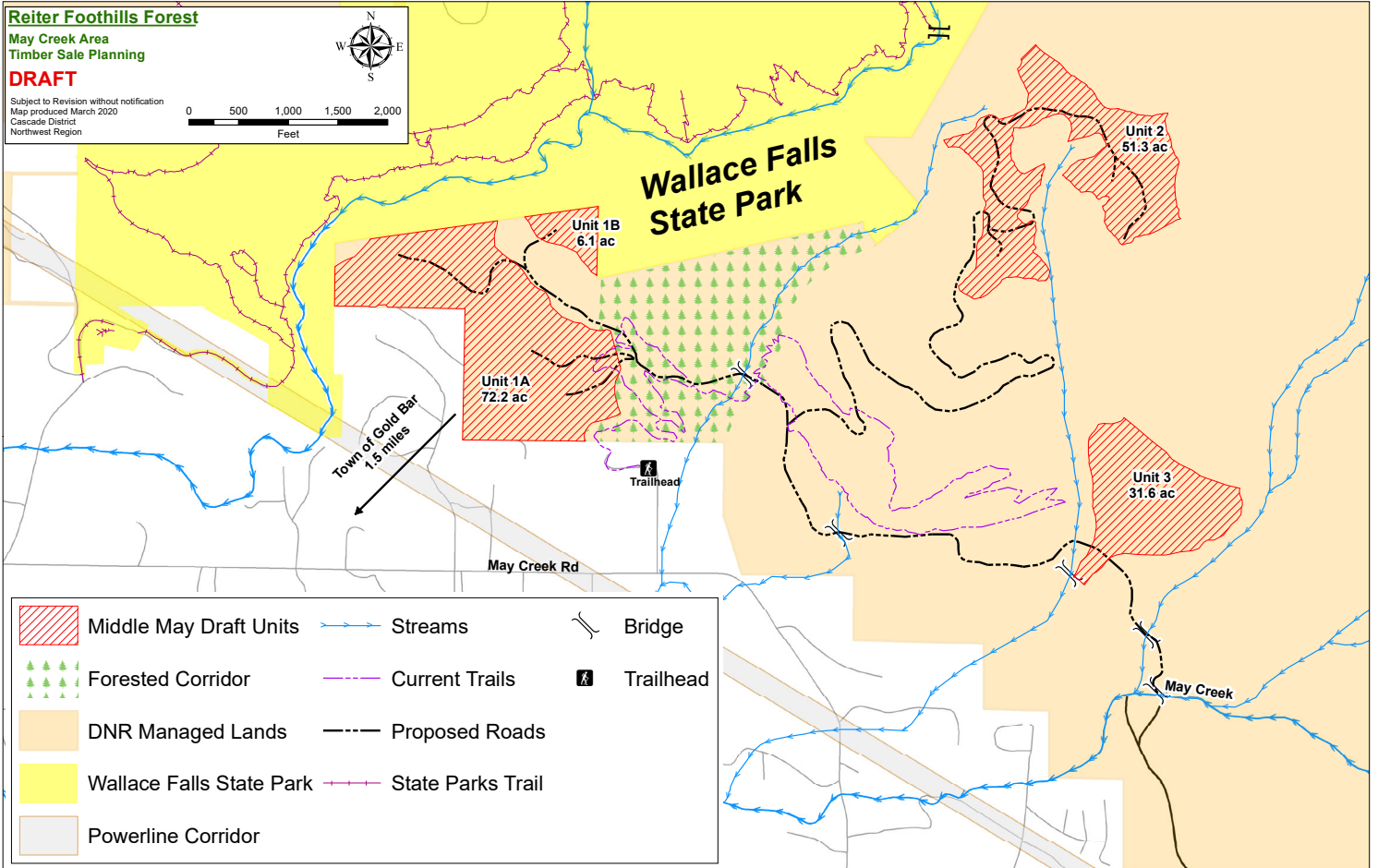
Reiter Foothills is a popular place to recreate. The Middle May sale is located within the portion of the forest planned for non-motorized trail development.

Several key factors were considered in the planning of this sale:

- Generating revenue for DNR’s trust beneficiaries
- Establishing critical bridge and road infrastructure to provide access into the forest for timber harvest and for recreation
- Meeting the agency’s obligation under the Habitat Conservation Plan to improve habitat for the northern spotted owl
- Providing a forested trail corridor between the Snohomish County trailhead and Wallace Falls State Park to support non-motorized trail development.

CURRENT PROJECT TIMELINE





ABOUT THIS SALE

Department of Natural Resources staff convened meetings with community members to share information about managing forested state trust lands and to learn more about community values. Ideas from the community were integrated into the planning of the sale where possible.

MIDDLE MAY SALE SPECIFICS

This sale is expected to generate more than 9 million board feet of timber, primarily Douglas-fir and western hemlock.

The harvest units within the sale range in size between 6 and 70 acres, and are approximately 160 acres total. Units in the Middle May timber sale are planned for variable retention harvest, which will retain a minimum of eight trees per acre, in addition to standing dead snags for habitat, large woody debris, and stream and wetland buffers. The sale will be replanted with a combination of Douglas-fir and Western redcedar.

The forested corridor connecting the county trailhead to Wallace Falls State Park will provide trail access and be managed as long-term habitat for the northern spotted owl.

There are 3.6 miles of non-motorized trails in the immediate area. Approximately 0.8 miles of trail will be relocated as a result of this harvest. The other trails in the area will remain; however, they will be closed during harvest activities for safety reasons.

Initial estimates are that this sale will net approximately \$1.7 million for DNR's trust beneficiaries. This estimate can and will change as market conditions fluctuate.

Revenue generated from this sale will benefit Snohomish County, state schools, and county roads, as well as taxing districts such as a local school district, fire district, hospital, and library.